

Data Path : Z:\svoasrv\HPCHEM1\BNA_N\Data\BN113021\
 Data File : BN017636.D
 Acq On : 01 Dec 2021 06:11
 Operator : CG/JU
 Sample : M4862-14
 Misc :
 ALS Vial : 25 Sample Multiplier: 1

Instrument :
 BNA_N
ClientSampleId :
 CS-7A

Manual Integrations
APPROVED
 Reviewed By :Jagrut Upadhyay 12/01/2021
 Supervised By :mohammad ahmed 12/05/2021

Quant Time: Dec 01 06:40:06 2021
 Quant Method : Z:\SVOASRV\HPCHEM1\BNA_N\METHODS\8270-SIM-BN113021.M
 Quant Title : ASP BNA STANDARDS FOR 5 POINT CALIBRATION
 QLast Update : Tue Nov 30 18:26:44 2021
 Response via : Initial Calibration

Compound	R.T.	QIon	Response	Conc	Units	Dev(Min)	
Internal Standards							
1) 1,4-Dichlorobenzene-d4	7.773	152	26666	0.400	ng	0.00	
7) Naphthalene-d8	10.548	136	111299	0.400	ng	# 0.00	
13) Acenaphthene-d10	14.384	164	67386	0.400	ng	0.00	
19) Phenanthrene-d10	17.116	188	136396	0.400	ng	#-0.01	
29) Chrysene-d12	21.303	240	129085	0.400	ng	#-0.01	
35) Perylene-d12	23.616	264	122381	0.400	ng	-0.01	
System Monitoring Compounds							
4) 2-Fluorophenol	5.403	112	93	0.002	ng	0.04	
5) Phenol-d6	6.952	99	275	0.004	ng	0.00	
8) Nitrobenzene-d5	8.913	82	13053	0.276	ng	0.00	
11) 2-Methylnaphthalene-d10	12.138	152	46685	0.240	ng	0.00	
14) 2,4,6-Tribromophenol	15.882	330	56	0.126	ng	0.00	
15) 2-Fluorobiphenyl	13.014	172	60562	0.231	ng	0.00	
27) Fluoranthene-d10	19.154	212	107151	0.251	ng	0.00	
31) Terphenyl-d14	19.754	244	76625	0.271	ng	0.00	
Target Compounds							
9) Naphthalene	10.598	128	98639	0.351	ng	100	Qvalue
12) 2-Methylnaphthalene	12.213	142	20925	0.113	ng	98	
16) Acenaphthylene	14.105	152	53782	0.205	ng	99	
17) Acenaphthene	14.448	154	37632	0.207	ng	99	
18) Fluorene	15.425	166	73313m	0.332	ng		
25) Phenanthrene	17.165	178	1204319	3.219	ng	100	
26) Anthracene	17.250	178	255875	0.796	ng	# 92	
28) Fluoranthene	19.184	202	1844363	4.357	ng	98	
30) Pyrene	19.546	202	1486557	3.567	ng	# 96	
32) Benzo(a)anthracene	21.293	228	816824	2.083	ng	96	
33) Chrysene	21.346	228	692901	1.624	ng	97	
34) Bis(2-ethylhexyl)phtha...	21.240	149	31854	0.343	ng	95	
36) Indeno(1,2,3-cd)pyrene	25.981	276	384692	0.968	ng	# 92	
37) Benzo(b)fluoranthene	22.918	252	864304	2.130	ng	99	
38) Benzo(k)fluoranthene	22.959	252	321683m	0.773	ng		
39) Benzo(a)pyrene	23.513	252	582332	1.603	ng	98	
40) Dibenzo(a,h)anthracene	25.991	278	89142	0.274	ng	# 92	
41) Benzo(g,h,i)perylene	26.703	276	374560	1.121	ng	96	

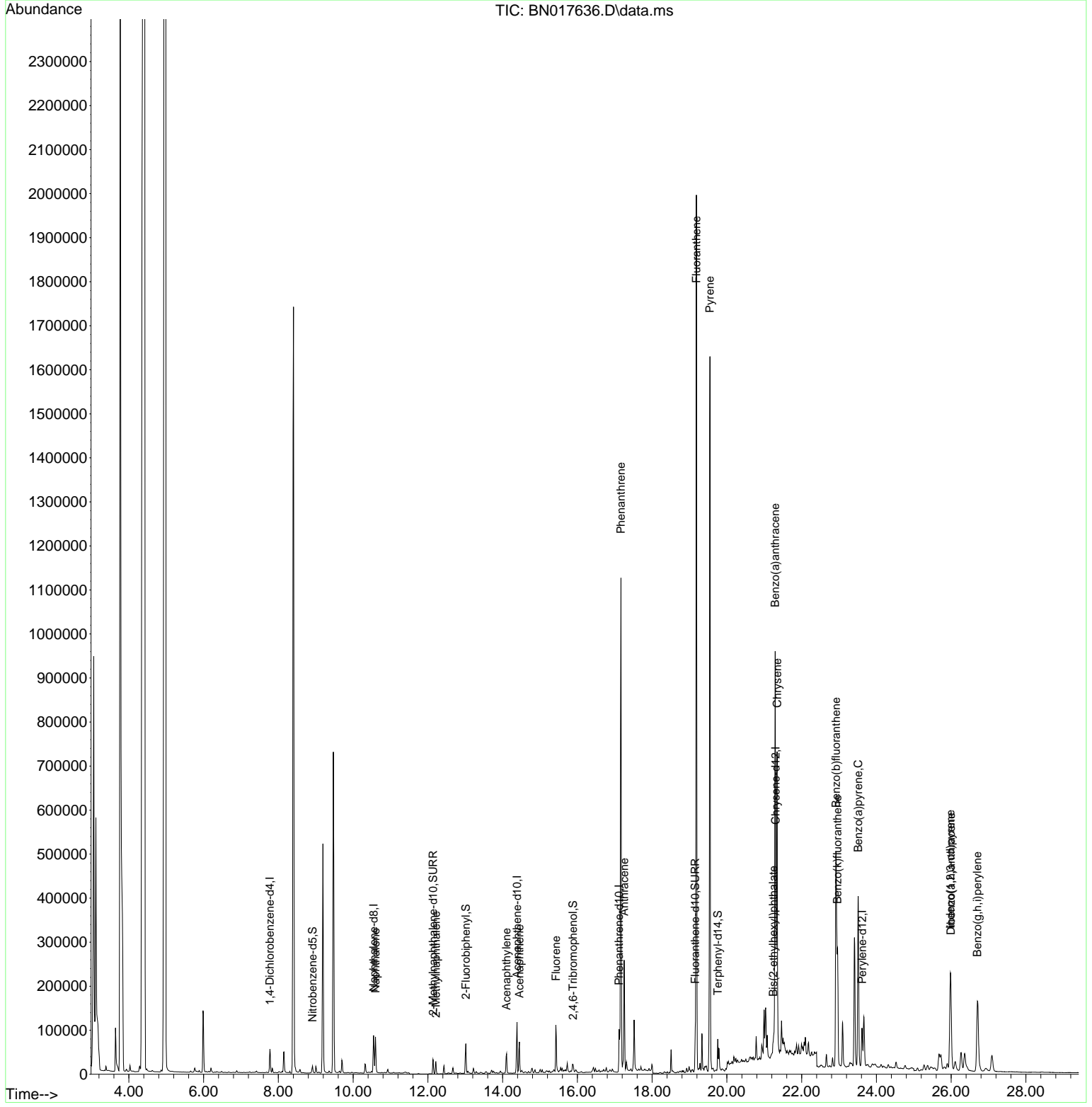
(#) = qualifier out of range (m) = manual integration (+) = signals summed

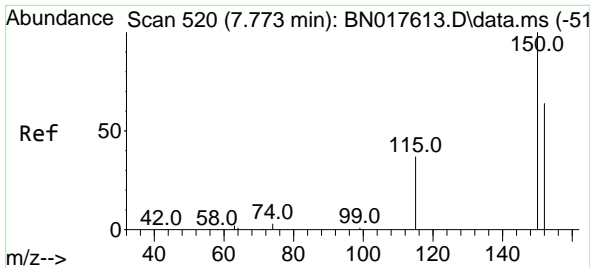
Data Path : Z:\svoasrv\HPCHEM1\BNA_N\Data\BN113021\
 Data File : BN017636.D
 Acq On : 01 Dec 2021 06:11
 Operator : CG/JU
 Sample : M4862-14
 Misc :
 ALS Vial : 25 Sample Multiplier: 1

Instrument :
 BNA_N
ClientSampleId :
 CS-7A

Quant Time: Dec 01 06:40:06 2021
 Quant Method : Z:\SVOASRV\HPCHEM1\BNA_N\METHODS\8270-SIM-BN113021.M
 Quant Title : ASP BNA STANDARDS FOR 5 POINT CALIBRATION
 QLast Update : Tue Nov 30 18:26:44 2021
 Response via : Initial Calibration

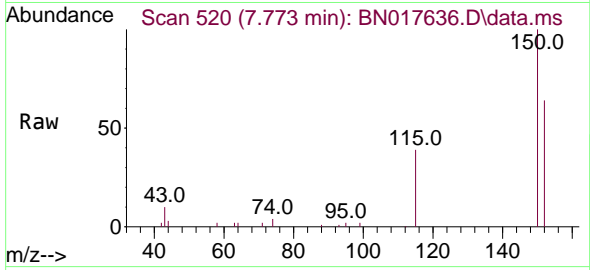
Manual Integrations
APPROVED
 Reviewed By :Jagrut Upadhyay 12/01/2021
 Supervised By :mohammad ahmed 12/05/2021





#1
 1,4-Dichlorobenzene-d4
 Concen: 0.400 ng
 RT: 7.773 min Scan# 51
 Delta R.T. -0.000 min
 Lab File: BN017636.D
 Acq: 01 Dec 2021 06:11

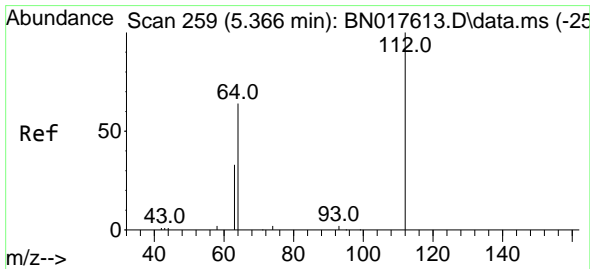
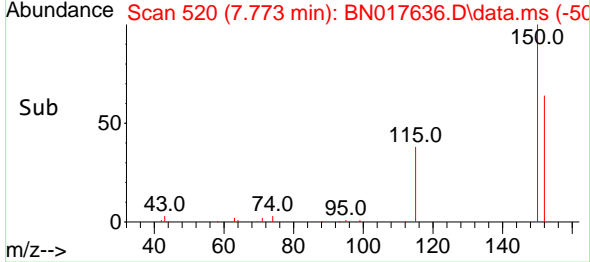
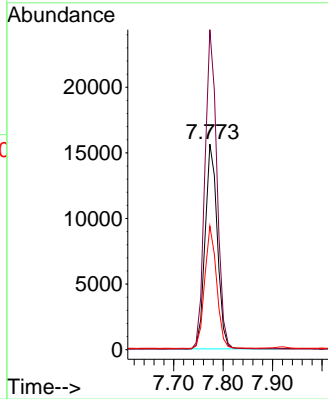
Instrument :
 BNA_N
 ClientSampleId :
 CS-7A



Tgt Ion:152 Resp: 2666
 Ion Ratio Lower Upper
 152 100
 150 155.6 123.0 184.4
 115 60.2 45.6 68.4

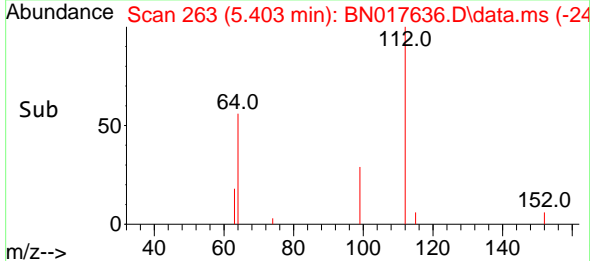
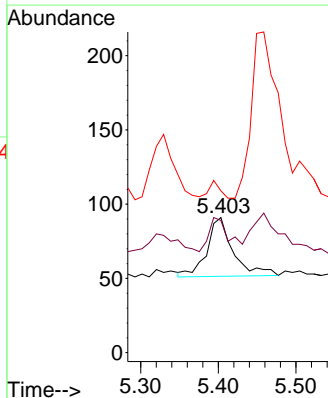
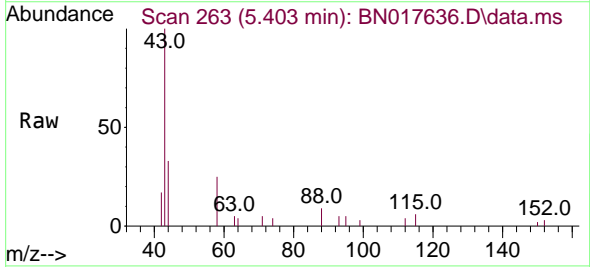
Manual Integrations
 APPROVED

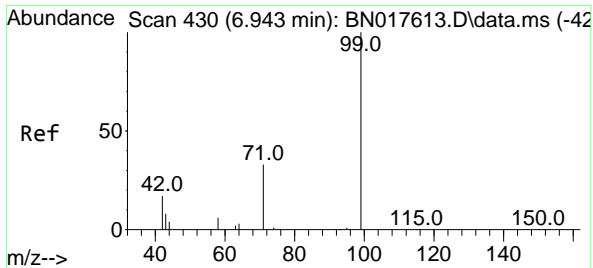
Reviewed By :Jagrut Upadhyay 12/01/2021
 Supervised By :mohammad ahmed 12/05/2021



#4
 2-Fluorophenol
 Concen: 0.002 ng
 RT: 5.403 min Scan# 263
 Delta R.T. 0.037 min
 Lab File: BN017636.D
 Acq: 01 Dec 2021 06:11

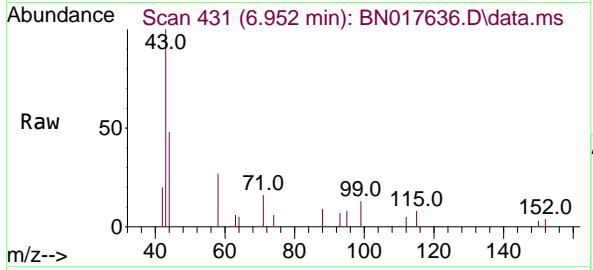
Tgt Ion:112 Resp: 93
 Ion Ratio Lower Upper
 112 100
 64 43.0 47.6 71.4#
 63 11.8 24.6 37.0#





#5
 Phenol-d6
 Concen: 0.004 ng
 RT: 6.952 min Scan# 431
 Delta R.T. 0.009 min
 Lab File: BN017636.D
 Acq: 01 Dec 2021 06:11

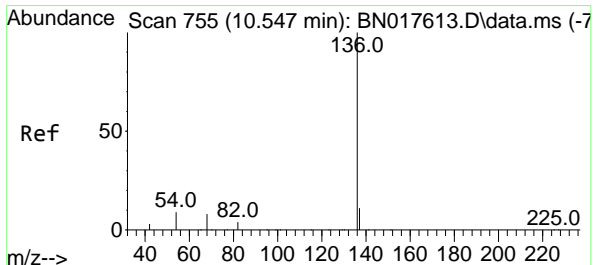
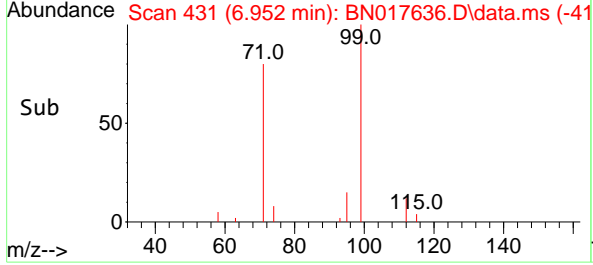
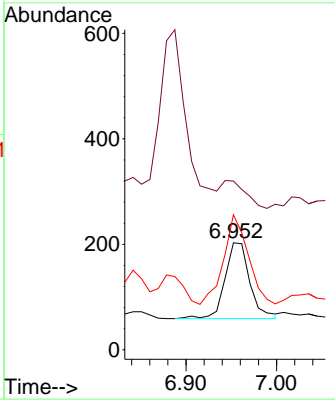
Instrument : BNA_N
 ClientSampleId : CS-7A



Tgt Ion: 99 Resp: 279

Ion	Ratio	Lower	Upper
99	100		
42	34.2	17.0	25.6
71	116.7	24.8	37.2

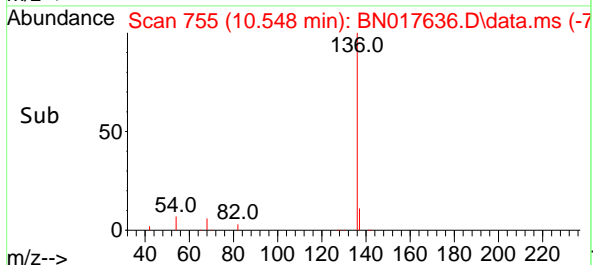
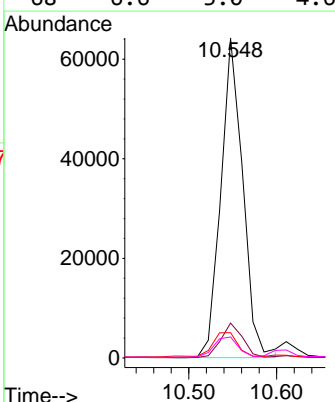
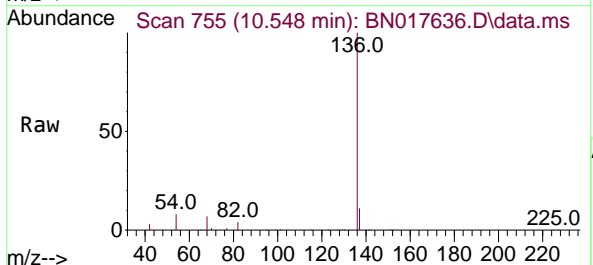
Manual Integrations
APPROVED
 Reviewed By :Jagrut Upadhyay 12/01/2021
 Supervised By :mohammad ahmed 12/05/2021

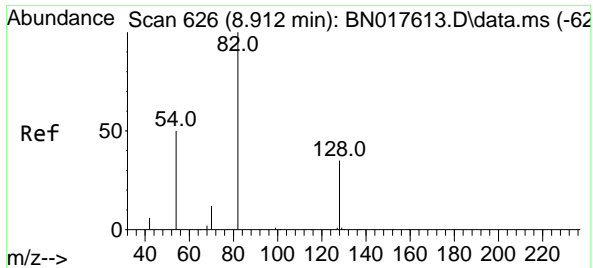


#7
 Naphthalene-d8
 Concen: 0.400 ng
 RT: 10.548 min Scan# 755
 Delta R.T. 0.001 min
 Lab File: BN017636.D
 Acq: 01 Dec 2021 06:11

Tgt Ion:136 Resp: 111299

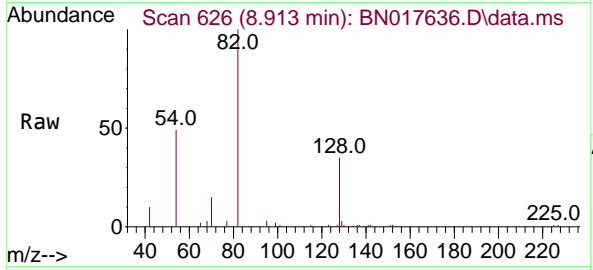
Ion	Ratio	Lower	Upper
136	100		
137	10.9	8.8	13.2
54	7.9	4.0	6.0#
68	6.6	3.0	4.6#





#8
 Nitrobenzene-d5
 Concen: 0.276 ng
 RT: 8.913 min Scan# 61
 Delta R.T. 0.001 min
 Lab File: BN017636.D
 Acq: 01 Dec 2021 06:11

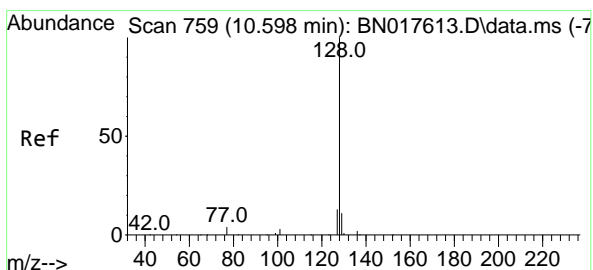
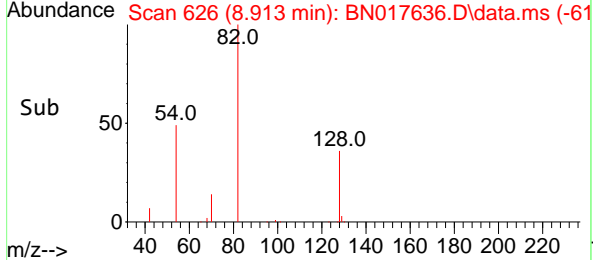
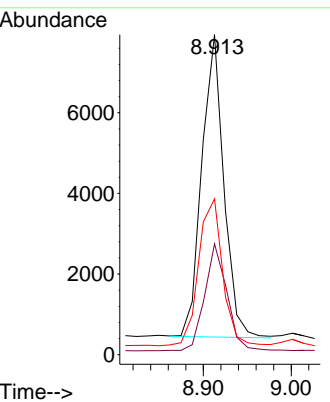
Instrument :
 BNA_N
 ClientSampleId :
 CS-7A



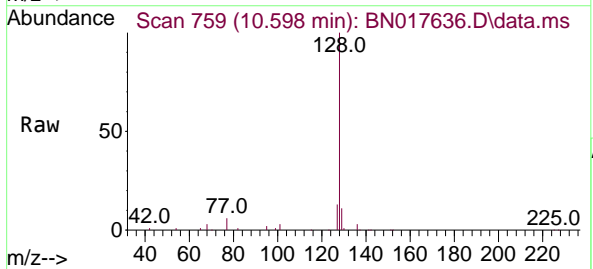
Tgt Ion: 82 Resp: 1305

Ion	Ratio	Lower	Upper
82	100		
128	34.7	27.7	41.5
54	48.7	49.2	73.8

Manual Integrations
APPROVED
 Reviewed By :Jagrut Upadhyay 12/01/2021
 Supervised By :mohammad ahmed 12/05/2021

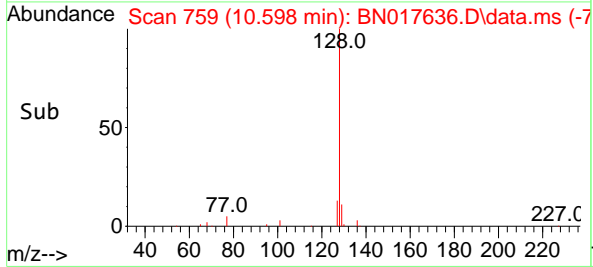
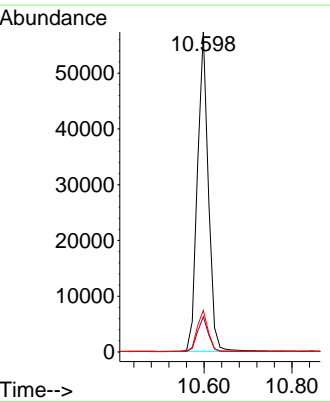


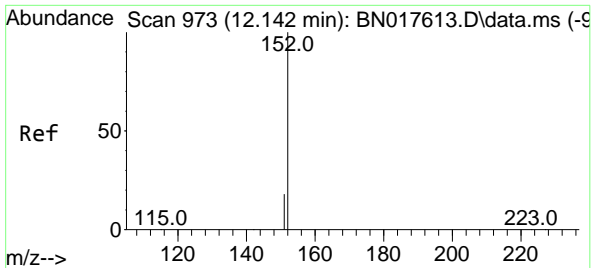
#9
 Naphthalene
 Concen: 0.351 ng
 RT: 10.598 min Scan# 759
 Delta R.T. 0.000 min
 Lab File: BN017636.D
 Acq: 01 Dec 2021 06:11



Tgt Ion:128 Resp: 98639

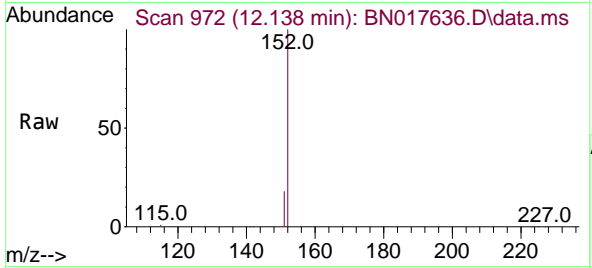
Ion	Ratio	Lower	Upper
128	100		
129	11.0	8.8	13.2
127	13.0	10.6	15.8





#11
 2-Methylnaphthalene-d10
 Concen: 0.240 ng
 RT: 12.138 min Scan# 911
 Delta R.T. -0.004 min
 Lab File: BN017636.D
 Acq: 01 Dec 2021 06:11

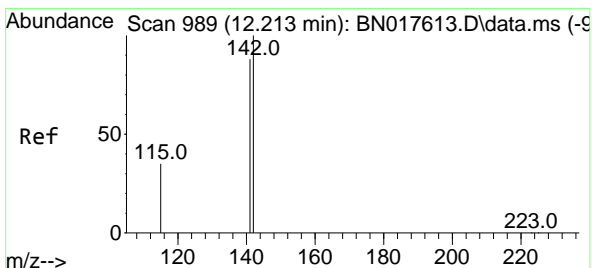
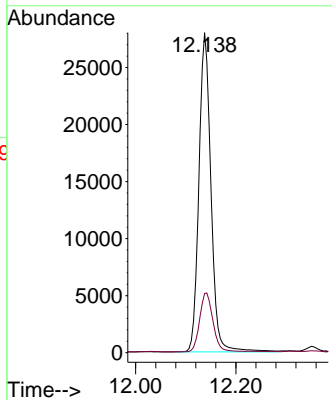
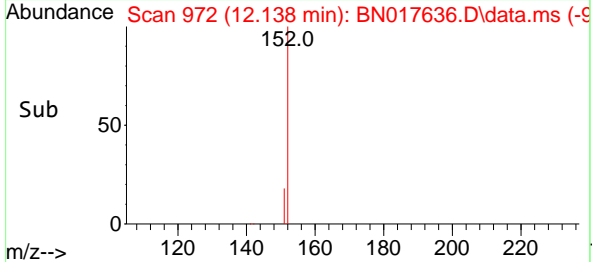
Instrument :
 BNA_N
 ClientSampleId :
 CS-7A



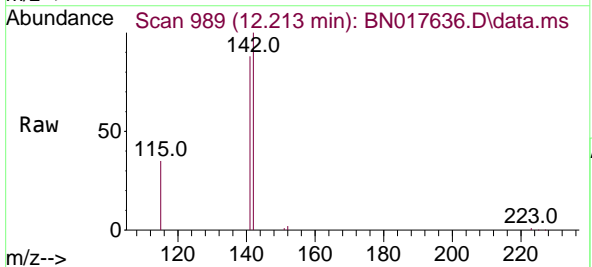
Tgt Ion:152 Resp: 4668
 Ion Ratio Lower Upper
 152 100
 151 20.2 16.2 24.4

Manual Integrations
 APPROVED

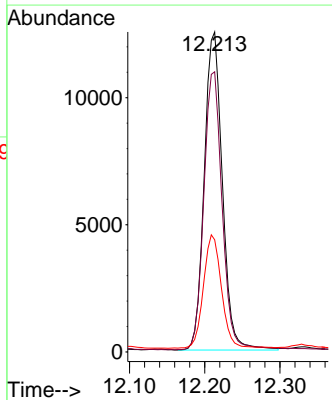
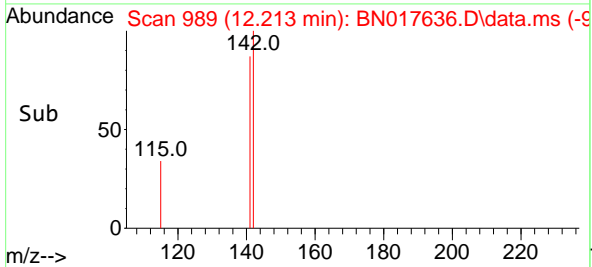
Reviewed By :Jagrut Upadhyay 12/01/2021
 Supervised By :mohammad ahmed 12/05/2021

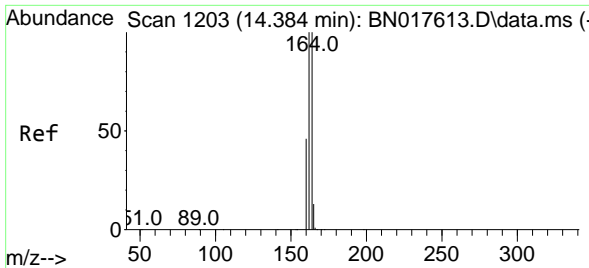


#12
 2-Methylnaphthalene
 Concen: 0.113 ng
 RT: 12.213 min Scan# 989
 Delta R.T. 0.000 min
 Lab File: BN017636.D
 Acq: 01 Dec 2021 06:11



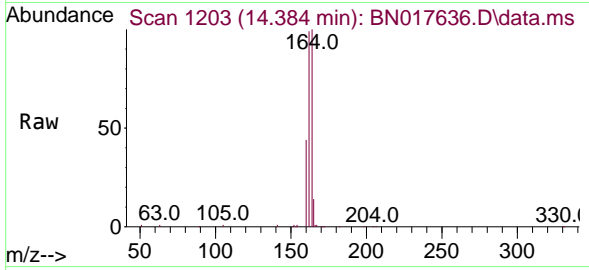
Tgt Ion:142 Resp: 20925
 Ion Ratio Lower Upper
 142 100
 141 87.6 70.6 106.0
 115 35.1 25.8 38.6





#13
 Acenaphthene-d10
 Concen: 0.400 ng
 RT: 14.384 min Scan# 11
 Delta R.T. 0.000 min
 Lab File: BN017636.D
 Acq: 01 Dec 2021 06:11

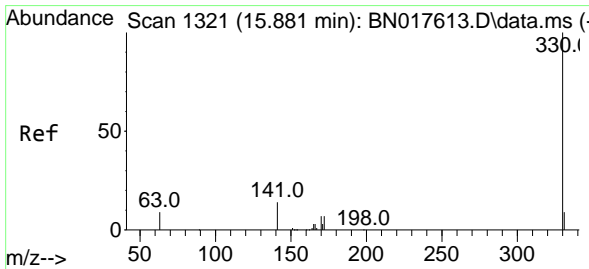
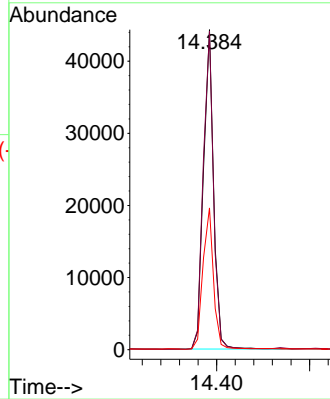
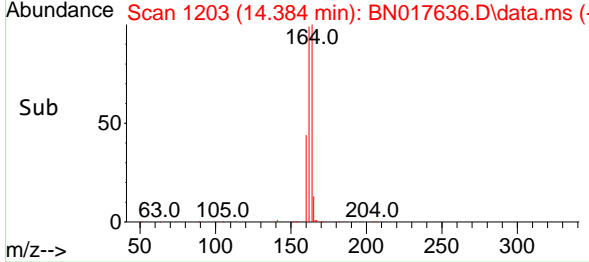
Instrument :
 BNA_N
 ClientSampleId :
 CS-7A



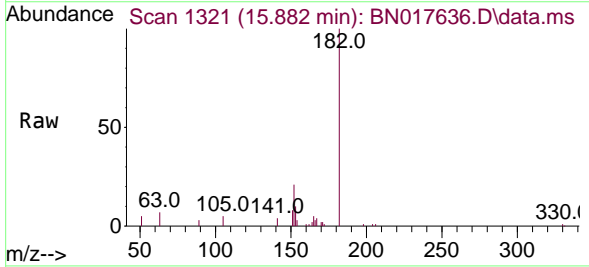
Tgt Ion:164 Resp: 67380
 Ion Ratio Lower Upper
 164 100
 162 99.5 81.4 122.2
 160 44.3 36.8 55.2

Manual Integrations
 APPROVED

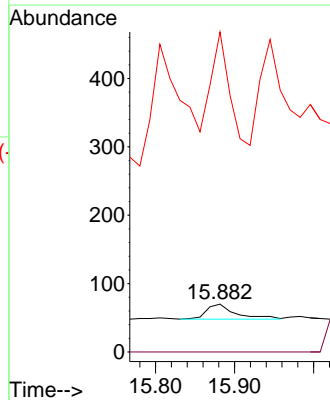
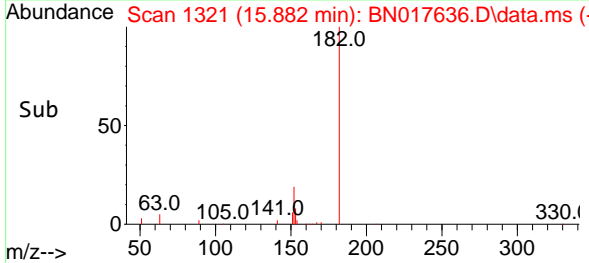
Reviewed By :Jagrut Upadhyay 12/01/2021
 Supervised By :mohammad ahmed 12/05/2021

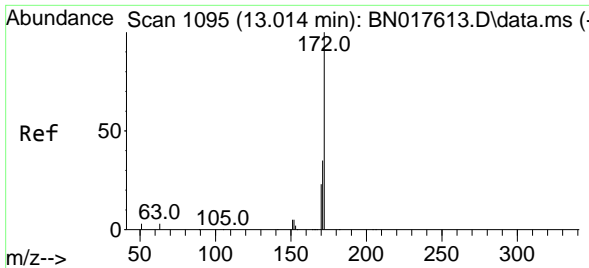


#14
 2,4,6-Tribromophenol
 Concen: 0.126 ng
 RT: 15.882 min Scan# 1321
 Delta R.T. 0.001 min
 Lab File: BN017636.D
 Acq: 01 Dec 2021 06:11



Tgt Ion:330 Resp: 56
 Ion Ratio Lower Upper
 330 100
 332 0.0 0.0 0.0
 141 458.9 28.9 43.3#





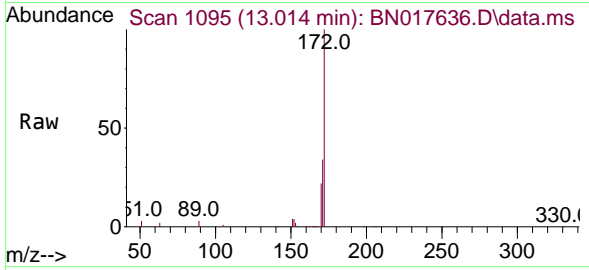
#15
 2-Fluorobiphenyl
 Concen: 0.231 ng
 RT: 13.014 min Scan# 1095
 Delta R.T. 0.000 min
 Lab File: BN017636.D
 Acq: 01 Dec 2021 06:11

Instrument :

BNA_N

ClientSampleId :

CS-7A

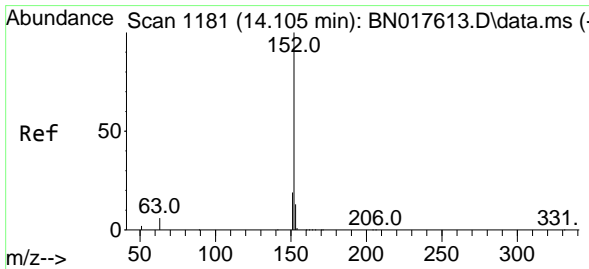
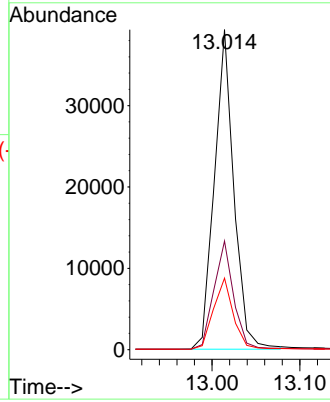
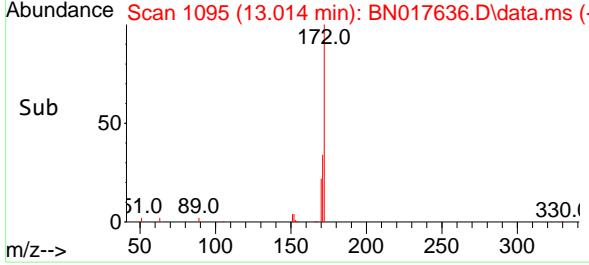


Tgt Ion:172 Resp: 60562
 Ion Ratio Lower Upper
 172 100
 171 33.9 28.7 43.1
 170 22.4 19.4 29.2

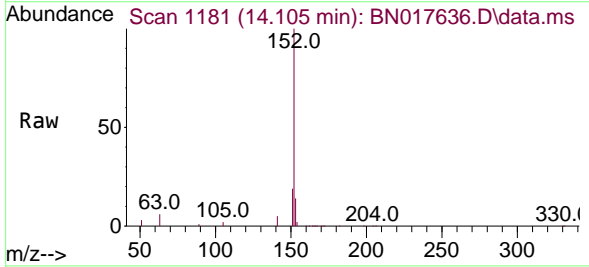
Manual Integrations

APPROVED

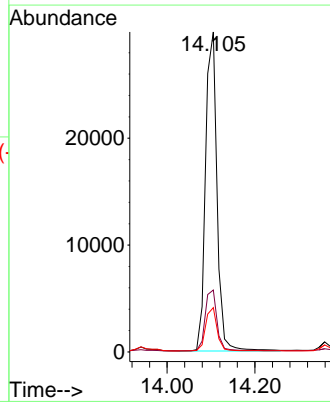
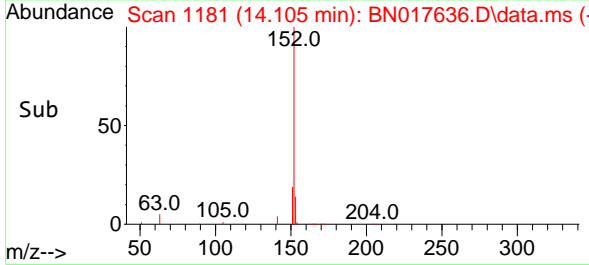
Reviewed By :Jagrut Upadhyay 12/01/2021
 Supervised By :mohammad ahmed 12/05/2021

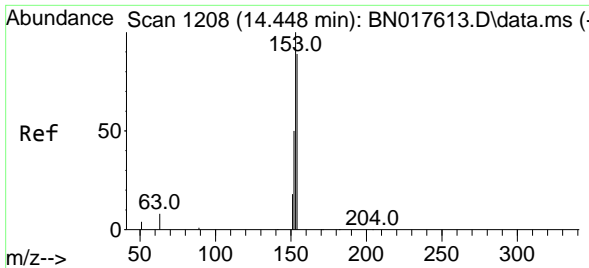


#16
 Acenaphthylene
 Concen: 0.205 ng
 RT: 14.105 min Scan# 1181
 Delta R.T. 0.000 min
 Lab File: BN017636.D
 Acq: 01 Dec 2021 06:11



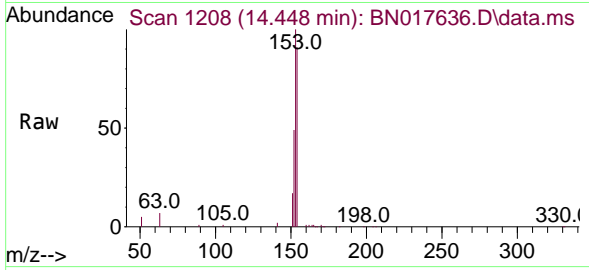
Tgt Ion:152 Resp: 53782
 Ion Ratio Lower Upper
 152 100
 151 20.0 15.5 23.3
 153 13.6 10.4 15.6





#17
 Acenaphthene
 Concen: 0.207 ng
 RT: 14.448 min Scan# 1208
 Delta R.T. -0.000 min
 Lab File: BN017636.D
 Acq: 01 Dec 2021 06:11

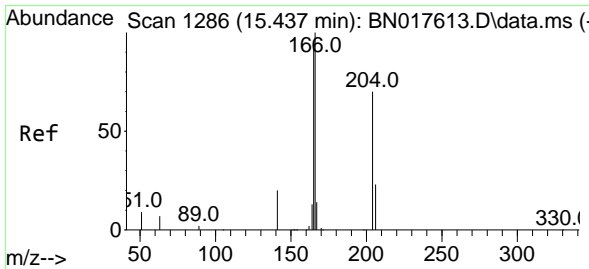
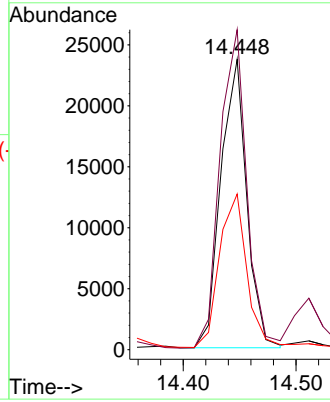
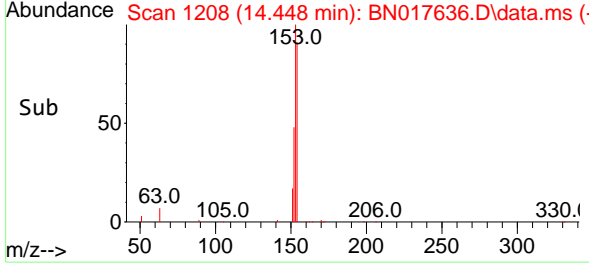
Instrument :
 BNA_N
 ClientSampleId :
 CS-7A



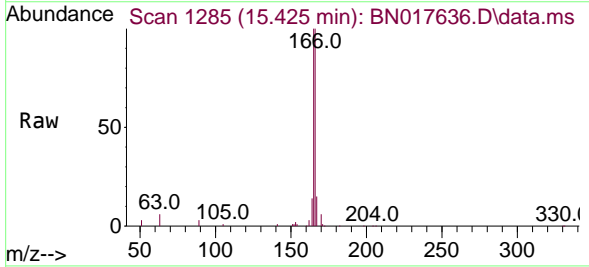
Tgt Ion:154 Resp: 3763
 Ion Ratio Lower Upper
 154 100
 153 114.5 91.2 136.8
 152 57.8 44.3 66.5

Manual Integrations
 APPROVED

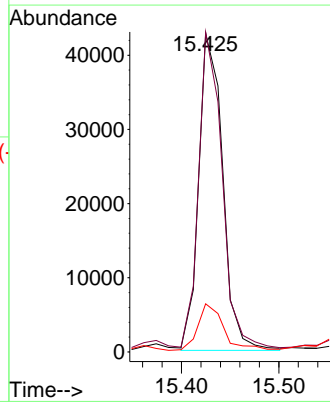
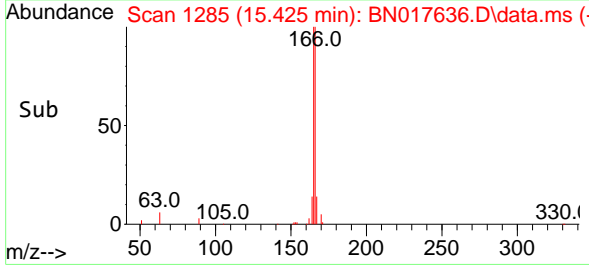
Reviewed By :Jagrut Upadhyay 12/01/2021
 Supervised By :mohammad ahmed 12/05/2021

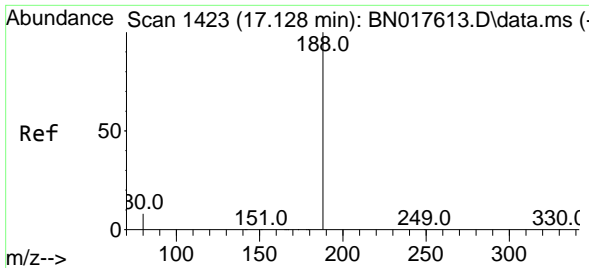


#18
 Fluorene
 Concen: 0.332 ng m
 RT: 15.425 min Scan# 1285
 Delta R.T. -0.012 min
 Lab File: BN017636.D
 Acq: 01 Dec 2021 06:11



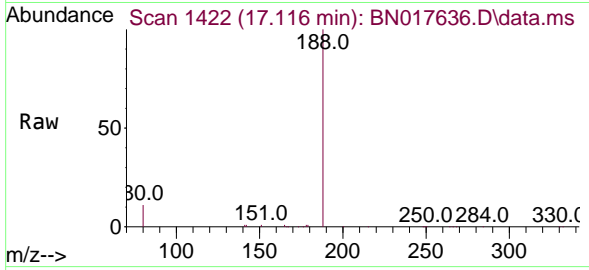
Tgt Ion:166 Resp: 73313
 Ion Ratio Lower Upper
 166 100
 165 103.6 77.9 116.9
 167 15.9 10.9 16.3





#19
 Phenanthrene-d10
 Concen: 0.400 ng
 RT: 17.116 min Scan# 1422
 Delta R.T. -0.012 min
 Lab File: BN017636.D
 Acq: 01 Dec 2021 06:11

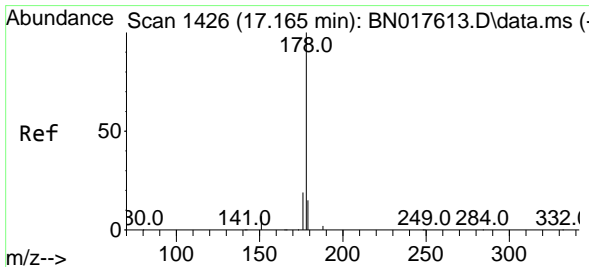
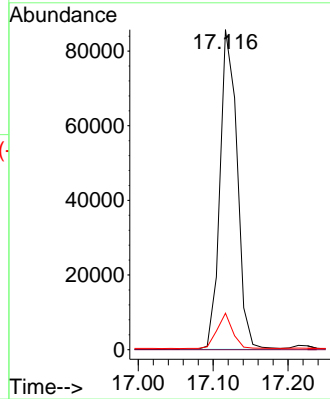
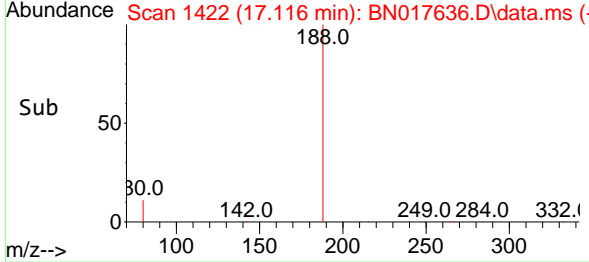
Instrument :
 BNA_N
 ClientSampleId :
 CS-7A



Tgt Ion:188 Resp: 136390
 Ion Ratio Lower Upper
 188 100
 94 0.0 0.0 0.0
 80 11.4 6.1 9.1

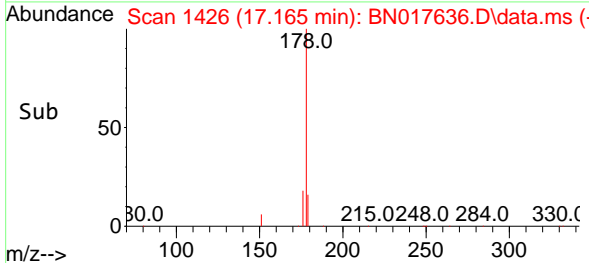
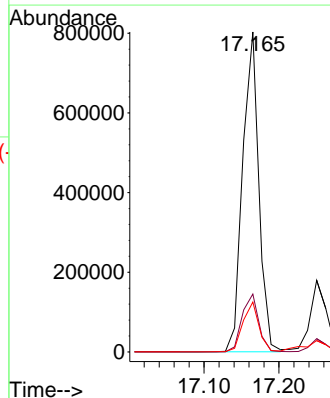
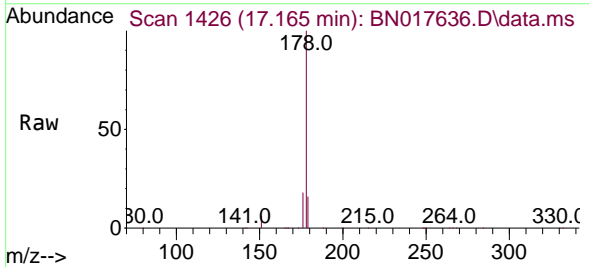
Manual Integrations
 APPROVED

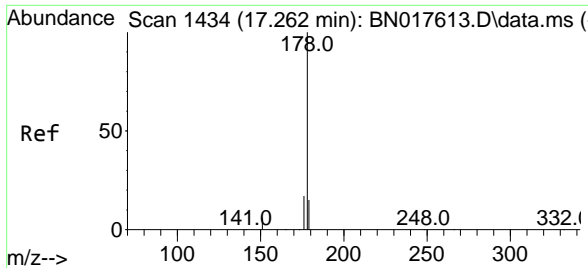
Reviewed By :Jagrut Upadhyay 12/01/2021
 Supervised By :mohammad ahmed 12/05/2021



#25
 Phenanthrene
 Concen: 3.219 ng
 RT: 17.165 min Scan# 1426
 Delta R.T. 0.000 min
 Lab File: BN017636.D
 Acq: 01 Dec 2021 06:11

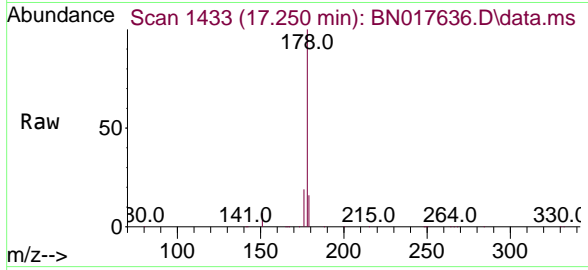
Tgt Ion:178 Resp: 1204319
 Ion Ratio Lower Upper
 178 100
 176 18.7 15.0 22.6
 179 15.6 12.3 18.5





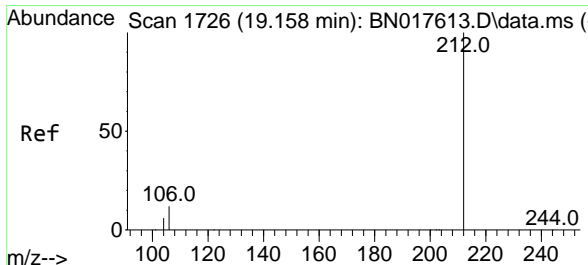
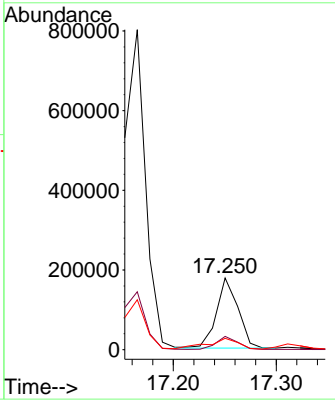
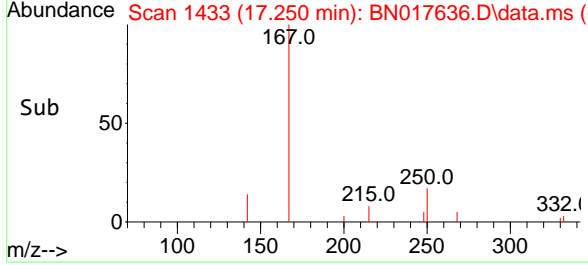
#26
 Anthracene
 Concen: 0.796 ng
 RT: 17.250 min Scan# 1433
 Delta R.T. -0.012 min
 Lab File: BN017636.D
 Acq: 01 Dec 2021 06:11

Instrument : BNA_N
 Client Sample Id : CS-7A

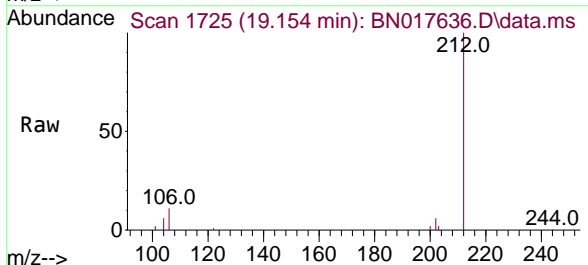


Tgt Ion:178 Resp: 255874
 Ion Ratio Lower Upper
 178 100
 176 19.2 14.6 22.0
 179 21.4 12.2 18.4

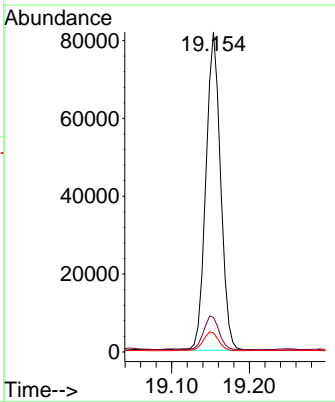
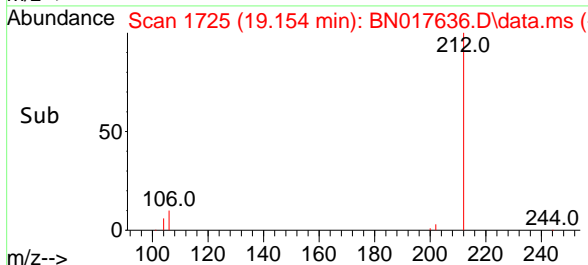
Manual Integrations
APPROVED
 Reviewed By :Jagrut Upadhyay 12/01/2021
 Supervised By :mohammad ahmed 12/05/2021

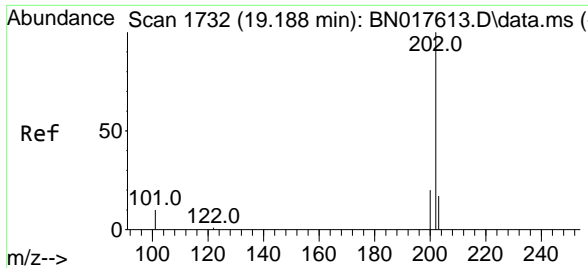


#27
 Fluoranthene-d10
 Concen: 0.251 ng
 RT: 19.154 min Scan# 1725
 Delta R.T. -0.004 min
 Lab File: BN017636.D
 Acq: 01 Dec 2021 06:11



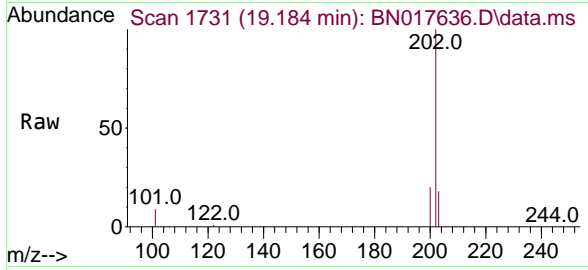
Tgt Ion:212 Resp: 107151
 Ion Ratio Lower Upper
 212 100
 106 11.1 10.5 15.7
 104 6.3 5.8 8.6





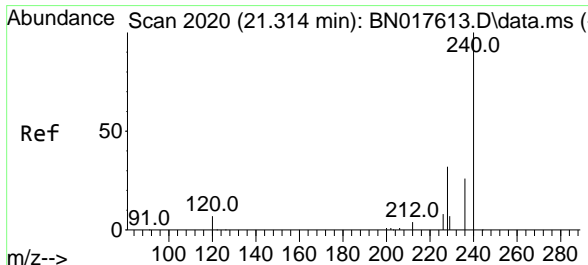
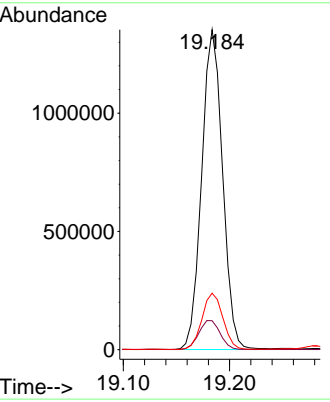
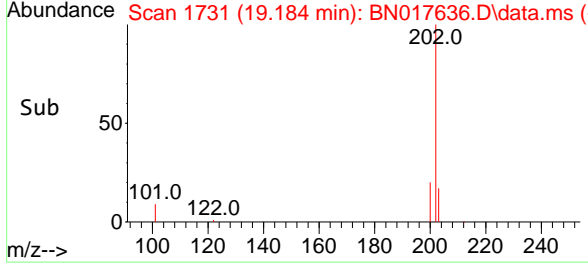
#28
 Fluoranthene
 Concen: 4.357 ng
 RT: 19.184 min Scan# 11
 Delta R.T. -0.004 min
 Lab File: BN017636.D
 Acq: 01 Dec 2021 06:11

Instrument :
 BNA_N
 ClientSampleId :
 CS-7A



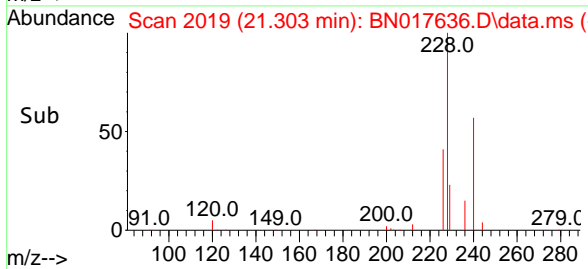
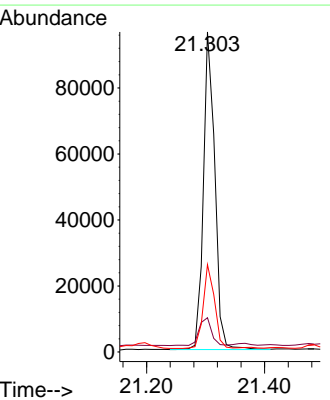
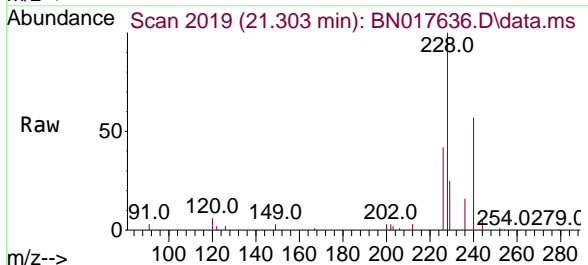
Tgt Ion: 202 Resp: 184436
 Ion Ratio Lower Upper
 202 100
 101 9.4 8.9 13.3
 203 17.6 13.8 20.6

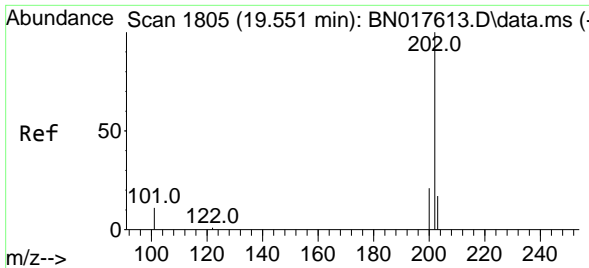
Manual Integrations
APPROVED
 Reviewed By :Jagrut Upadhyay 12/01/2021
 Supervised By :mohammad ahmed 12/05/2021



#29
 Chrysene-d12
 Concen: 0.400 ng
 RT: 21.303 min Scan# 2019
 Delta R.T. -0.011 min
 Lab File: BN017636.D
 Acq: 01 Dec 2021 06:11

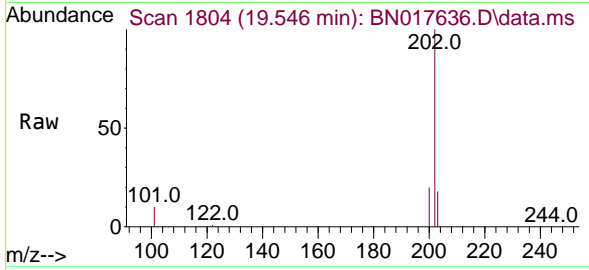
Tgt Ion: 240 Resp: 129085
 Ion Ratio Lower Upper
 240 100
 120 10.7 4.2 6.2#
 236 27.3 20.0 30.0





#30
 Pyrene
 Concen: 3.567 ng
 RT: 19.546 min Scan# 1804
 Delta R.T. -0.005 min
 Lab File: BN017636.D
 Acq: 01 Dec 2021 06:11

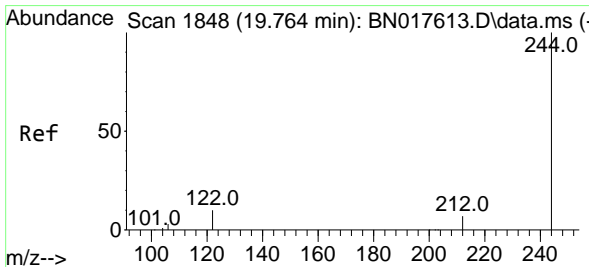
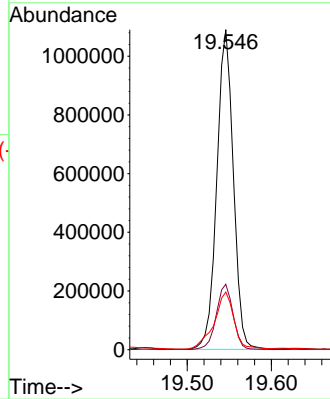
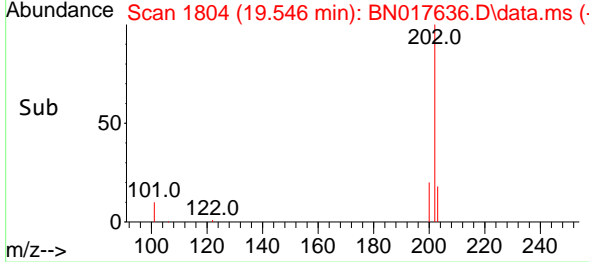
Instrument :
 BNA_N
 ClientSampleId :
 CS-7A



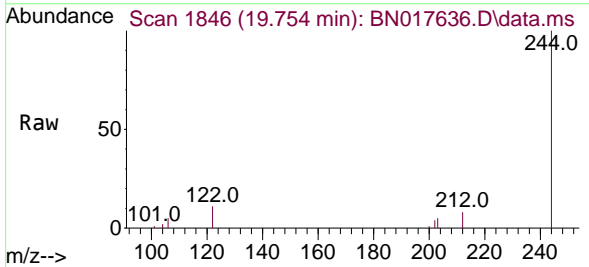
Tgt Ion:202 Resp: 148655
 Ion Ratio Lower Upper
 202 100
 200 20.7 16.5 24.7
 203 21.3 14.0 21.0

Manual Integrations
 APPROVED

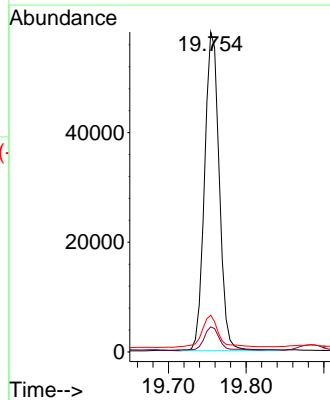
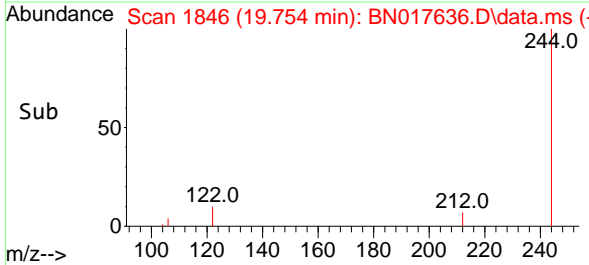
Reviewed By :Jagrut Upadhyay 12/01/2021
 Supervised By :mohammad ahmed 12/05/2021

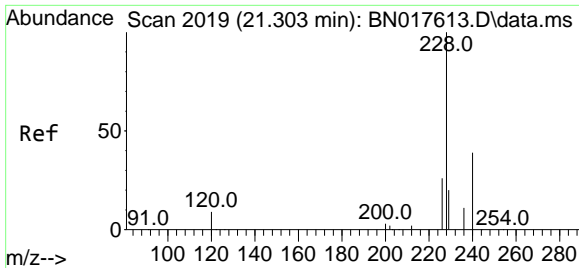


#31
 Terphenyl-d14
 Concen: 0.271 ng
 RT: 19.754 min Scan# 1846
 Delta R.T. -0.010 min
 Lab File: BN017636.D
 Acq: 01 Dec 2021 06:11



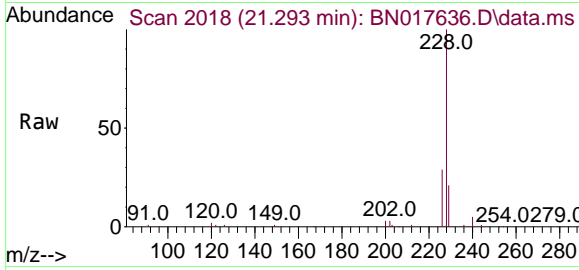
Tgt Ion:244 Resp: 76625
 Ion Ratio Lower Upper
 244 100
 212 7.9 5.7 8.5
 122 11.5 8.6 13.0





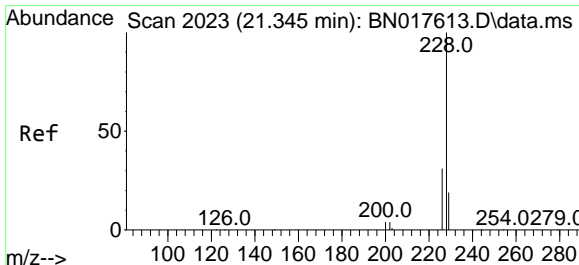
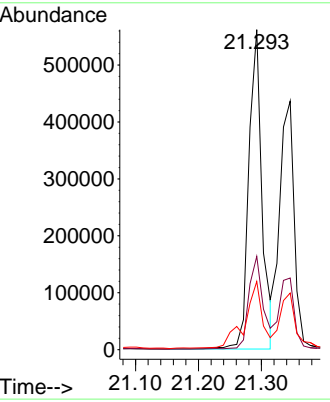
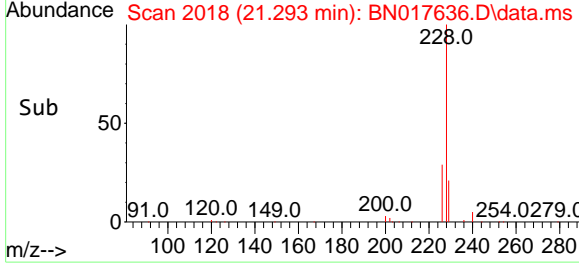
#32
 Benzo(a)anthracene
 Concen: 2.083 ng
 RT: 21.293 min Scan# 2019
 Delta R.T. -0.010 min
 Lab File: BN017636.D
 Acq: 01 Dec 2021 06:11

Instrument : BNA_N
 Client Sample Id : CS-7A

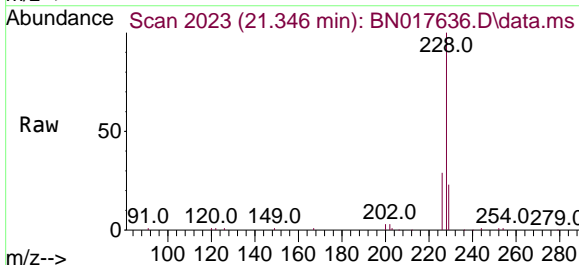


Tgt Ion: 228 Resp: 816824
 Ion Ratio Lower Upper
 228 100
 226 29.1 21.3 31.9
 229 21.3 15.7 23.5

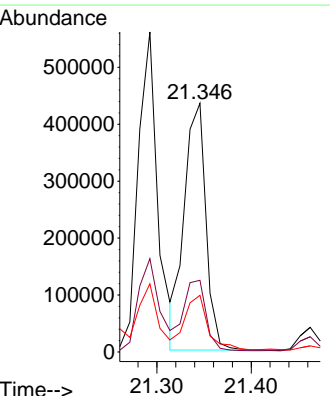
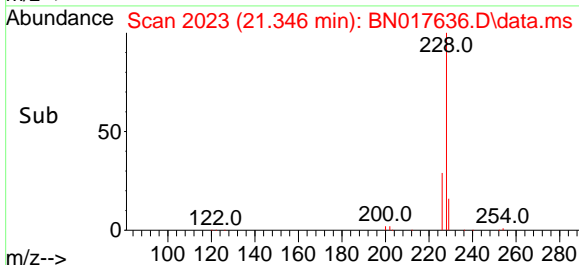
Manual Integrations
APPROVED
 Reviewed By : Jagrut Upadhyay 12/01/2021
 Supervised By : mohammad ahmed 12/05/2021

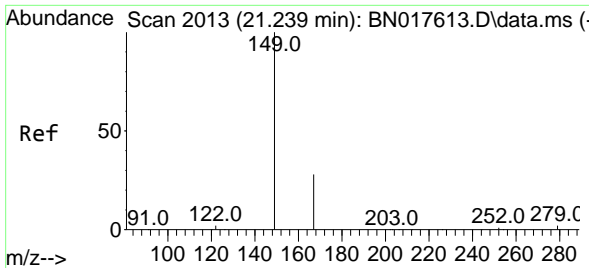


#33
 Chrysene
 Concen: 1.624 ng
 RT: 21.346 min Scan# 2023
 Delta R.T. 0.001 min
 Lab File: BN017636.D
 Acq: 01 Dec 2021 06:11



Tgt Ion: 228 Resp: 692901
 Ion Ratio Lower Upper
 228 100
 226 28.8 23.3 34.9
 229 22.8 15.6 23.4





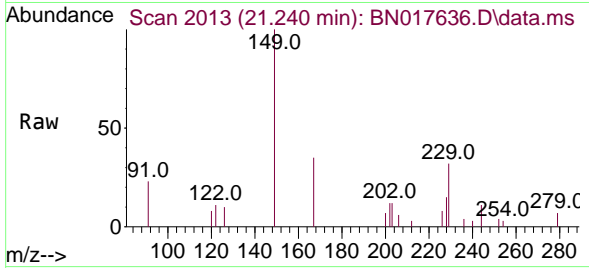
#34
 Bis(2-ethylhexyl)phthalate
 Concen: 0.343 ng
 RT: 21.240 min Scan# 2013
 Delta R.T. 0.001 min
 Lab File: BN017636.D
 Acq: 01 Dec 2021 06:11

Instrument :

BNA_N

ClientSampleId :

CS-7A

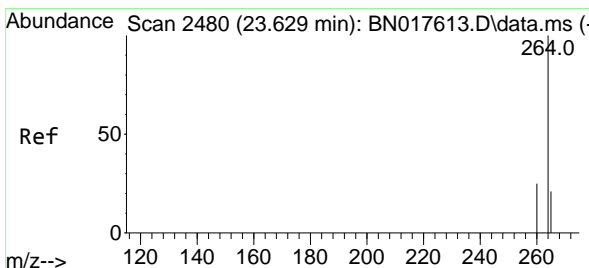
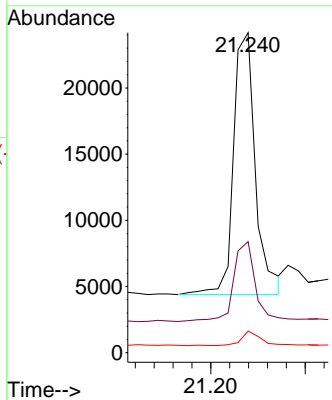
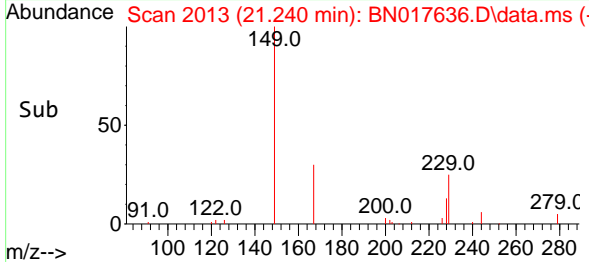


Tgt Ion:149 Resp: 31854
 Ion Ratio Lower Upper
 149 100
 167 30.2 21.8 32.6
 279 4.9 3.4 5.0

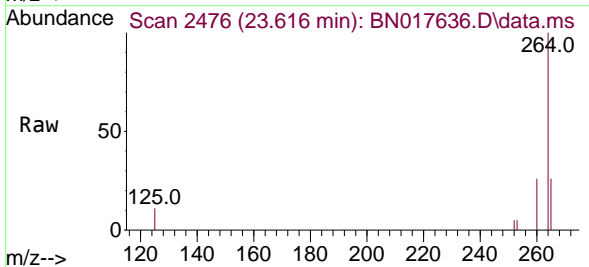
Manual Integrations

APPROVED

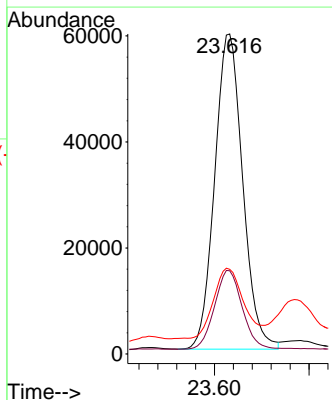
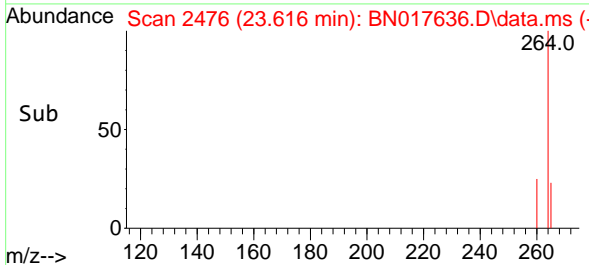
Reviewed By :Jagrut Upadhyay 12/01/2021
 Supervised By :mohammad ahmed 12/05/2021

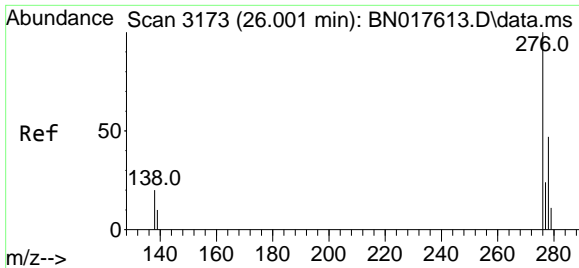


#35
 Perylene-d12
 Concen: 0.400 ng
 RT: 23.616 min Scan# 2476
 Delta R.T. -0.013 min
 Lab File: BN017636.D
 Acq: 01 Dec 2021 06:11



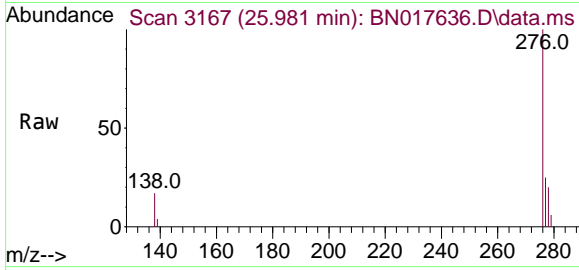
Tgt Ion:264 Resp: 122381
 Ion Ratio Lower Upper
 264 100
 260 26.0 19.4 29.2
 265 26.5 18.6 28.0





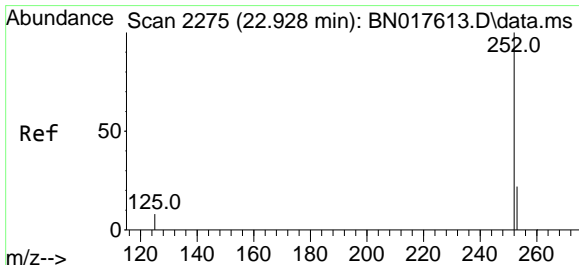
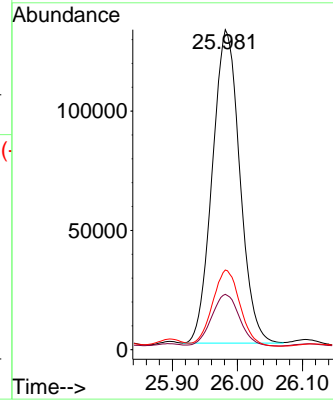
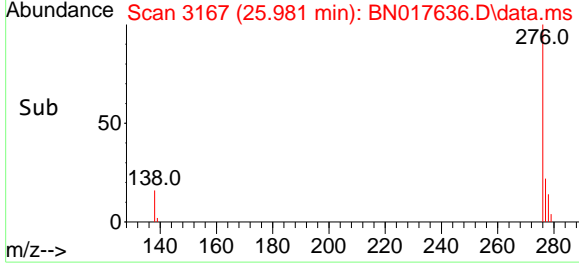
#36
 Indeno(1,2,3-cd)pyrene
 Concen: 0.968 ng
 RT: 25.981 min Scan# 3173
 Delta R.T. -0.020 min
 Lab File: BN017636.D
 Acq: 01 Dec 2021 06:11

Instrument : BNA_N
 ClientSampleId : CS-7A

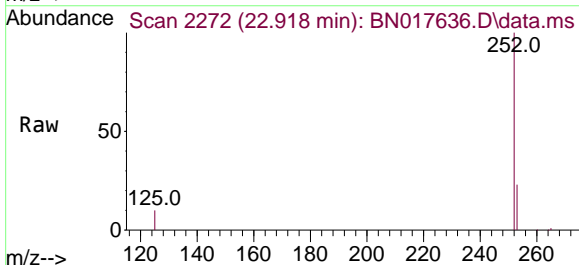


Tgt Ion:276 Resp: 384692
 Ion Ratio Lower Upper
 276 100
 138 16.8 19.7 29.5
 277 24.5 20.0 30.0

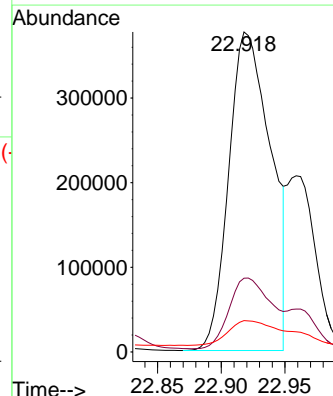
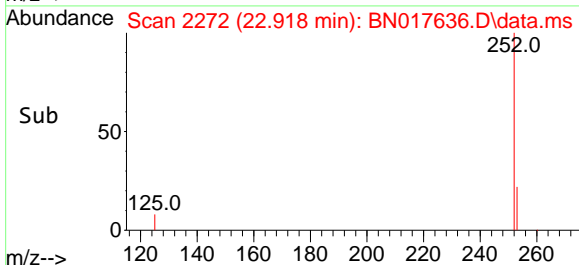
Manual Integrations
APPROVED
 Reviewed By :Jagrut Upadhyay 12/01/2021
 Supervised By :mohammad ahmed 12/05/2021

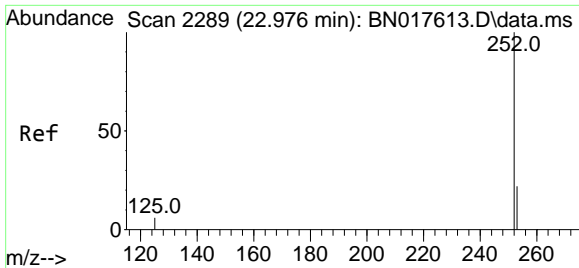


#37
 Benzo(b)fluoranthene
 Concen: 2.130 ng
 RT: 22.918 min Scan# 2272
 Delta R.T. -0.010 min
 Lab File: BN017636.D
 Acq: 01 Dec 2021 06:11



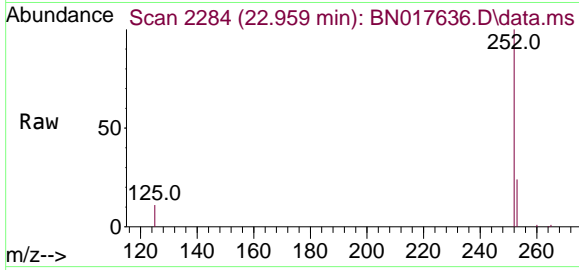
Tgt Ion:252 Resp: 864304
 Ion Ratio Lower Upper
 252 100
 253 23.1 17.7 26.5
 125 9.8 7.8 11.8





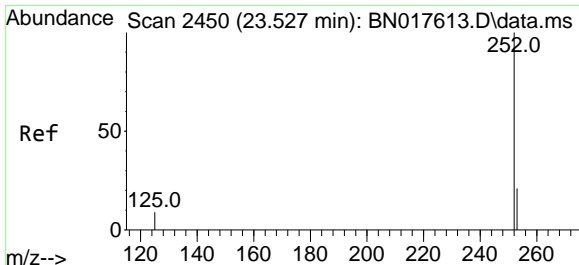
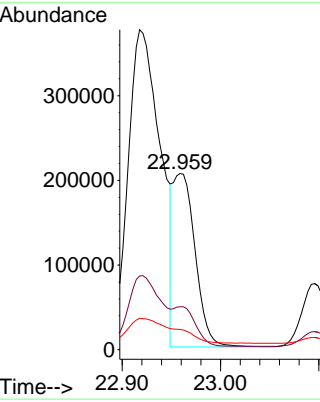
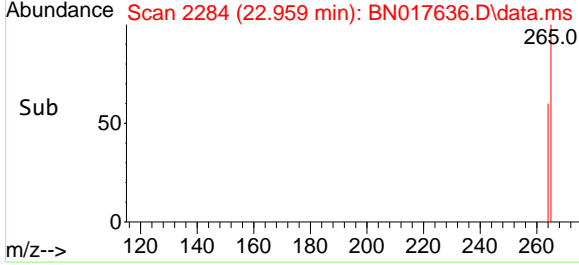
#38
 Benzo(k)fluoranthene
 Concen: 0.773 ng m
 RT: 22.959 min Scan# 21
 Delta R.T. -0.017 min
 Lab File: BN017636.D
 Acq: 01 Dec 2021 06:11

Instrument :
 BNA_N
 ClientSampleId :
 CS-7A

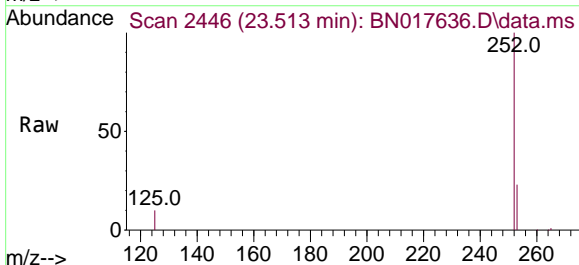


Tgt Ion:252 Resp: 32168
 Ion Ratio Lower Upper
 252 100
 253 24.4 17.7 26.5
 125 11.4 8.2 12.2

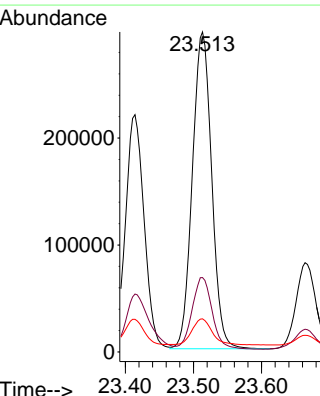
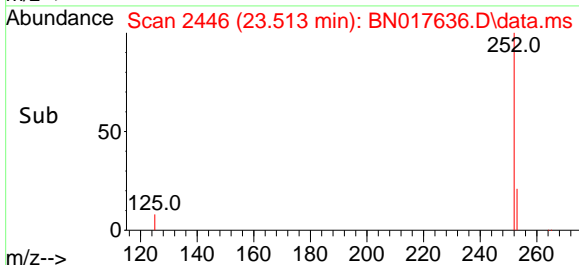
Manual Integrations
APPROVED
 Reviewed By :Jagrut Upadhyay 12/01/2021
 Supervised By :mohammad ahmed 12/05/2021

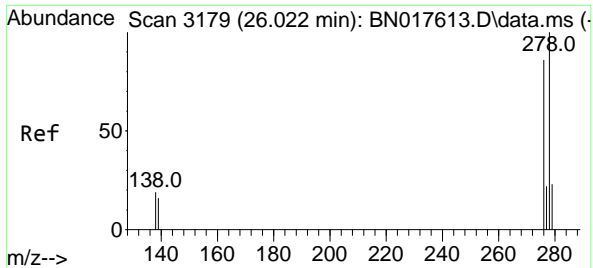


#39
 Benzo(a)pyrene
 Concen: 1.603 ng
 RT: 23.513 min Scan# 2446
 Delta R.T. -0.013 min
 Lab File: BN017636.D
 Acq: 01 Dec 2021 06:11



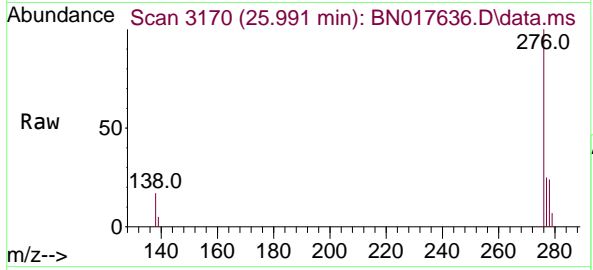
Tgt Ion:252 Resp: 582332
 Ion Ratio Lower Upper
 252 100
 253 23.2 17.9 26.9
 125 10.3 9.2 13.8





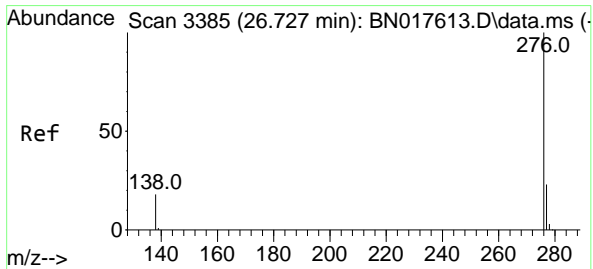
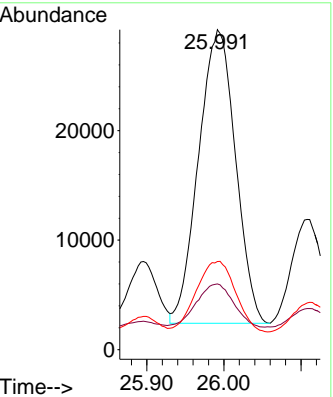
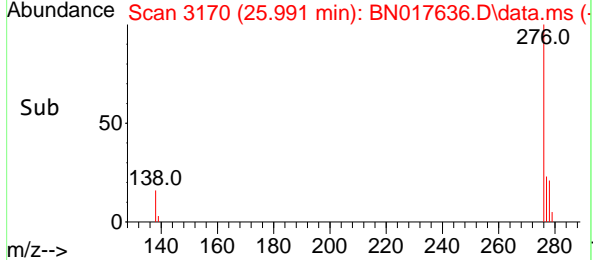
#40
 Dibenzo(a,h)anthracene
 Concen: 0.274 ng
 RT: 25.991 min Scan# 3170
 Delta R.T. -0.031 min
 Lab File: BN017636.D
 Acq: 01 Dec 2021 06:11

Instrument : BNA_N
 ClientSampleId : CS-7A

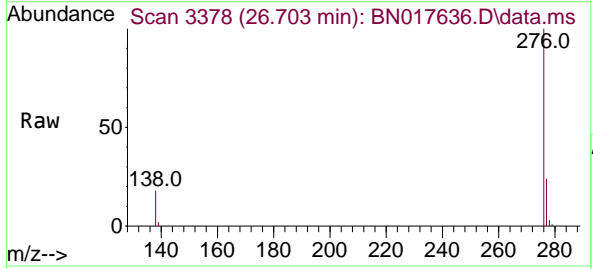


Tgt Ion:278 Resp: 8914
 Ion Ratio Lower Upper
 278 100
 139 20.6 13.0 19.6
 279 27.6 19.2 28.8

Manual Integrations
APPROVED
 Reviewed By :Jagrut Upadhyay 12/01/2021
 Supervised By :mohammad ahmed 12/05/2021



#41
 Benzo(g,h,i)perylene
 Concen: 1.121 ng
 RT: 26.703 min Scan# 3378
 Delta R.T. -0.024 min
 Lab File: BN017636.D
 Acq: 01 Dec 2021 06:11



Tgt Ion:276 Resp: 374560
 Ion Ratio Lower Upper
 276 100
 277 24.1 19.0 28.4
 138 17.7 17.1 25.7

