

Data Path : Z:\svoasrv\HPCHEM1\BNA\_N\Data\BN120123\  
 Data File : BN028951.D  
 Acq On : 01 Dec 2023 17:34  
 Operator : MA/JU  
 Sample : SSTDCCC0.4  
 Misc :  
 ALS Vial : 2 Sample Multiplier: 1

Instrument :  
 BNA\_N  
 ClientSampleId :  
 SSTDCCC0.4

Quant Time: Dec 01 23:12:25 2023  
 Quant Method : Z:\svoasrv\HPCHEM1\BNA\_N\Methods\8270-SIM-BN113023.M  
 Quant Title : ASP BNA STANDARDS FOR 5 POINT CALIBRATION  
 QLast Update : Fri Dec 01 23:11:55 2023  
 Response via : Initial Calibration

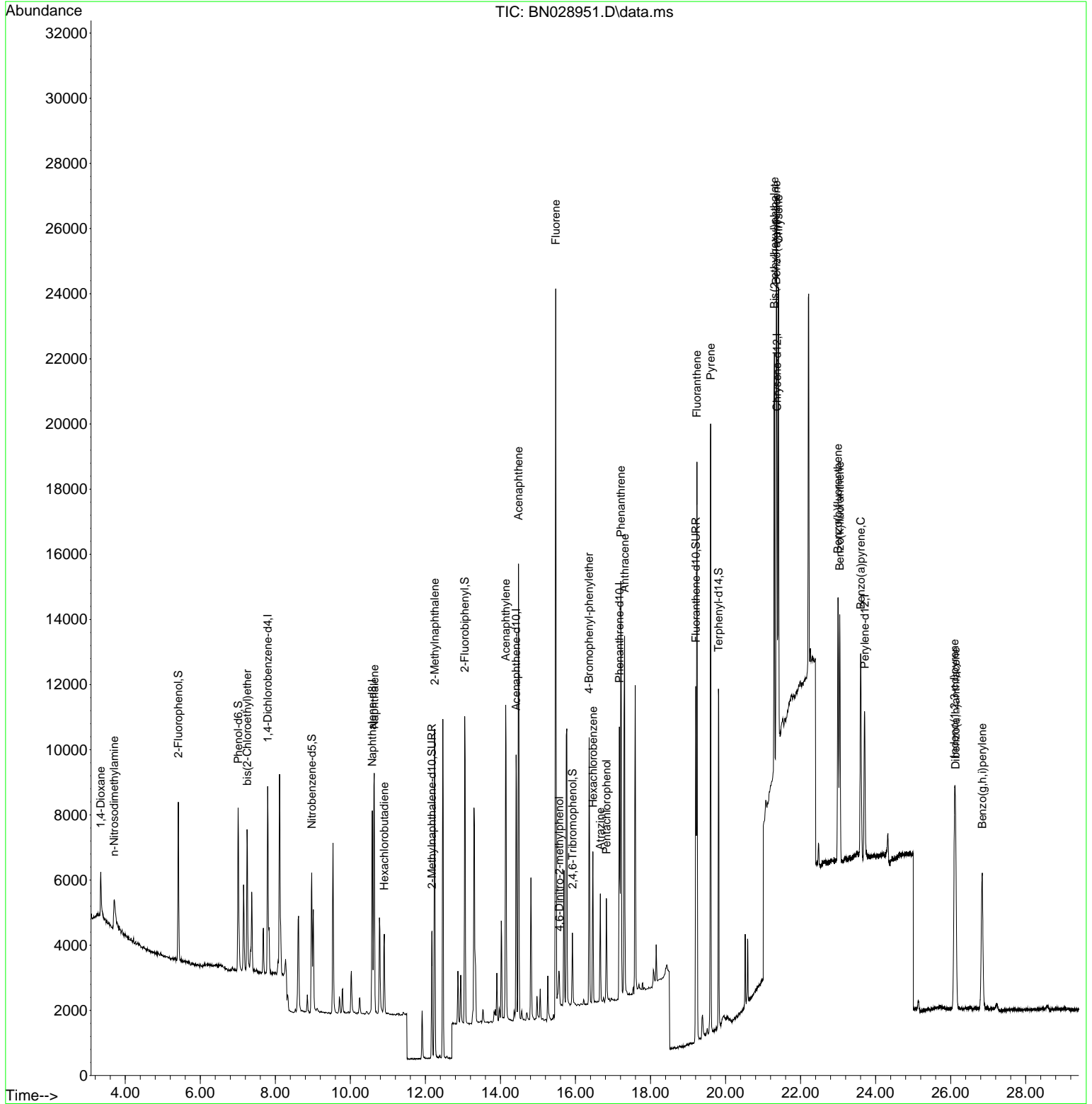
Compound	R.T.	QIon	Response	Conc	Units	Dev(Min)	
Internal Standards							
1) 1,4-Dichlorobenzene-d4	7.797	152	2592	0.400	ng	0.00	
7) Naphthalene-d8	10.584	136	8031	0.400	ng	0.00	
13) Acenaphthene-d10	14.418	164	4830	0.400	ng	0.00	
19) Phenanthrene-d10	17.171	188	10500	0.400	ng	0.00	
29) Chrysene-d12	21.374	240	7414	0.400	ng	# 0.00	
35) Perylene-d12	23.708	264	6457	0.400	ng	# 0.00	
System Monitoring Compounds							
4) 2-Fluorophenol	5.413	112	3515	0.448	ng	0.00	
5) Phenol-d6	7.010	99	4226	0.485	ng	0.00	
8) Nitrobenzene-d5	8.971	82	3617	0.453	ng	0.00	
11) 2-Methylnaphthalene-d10	12.170	152	5371	0.417	ng	0.00	
14) 2,4,6-Tribromophenol	15.918	330	1247	0.382	ng	0.00	
15) 2-Fluorobiphenyl	13.049	172	8252	0.396	ng	0.00	
27) Fluoranthene-d10	19.209	212	12151	0.440	ng	0.00	
31) Terphenyl-d14	19.817	244	9961	0.445	ng	0.00	
Target Compounds							
2) 1,4-Dioxane	3.348	88	1045	0.412	ng	# 90	Qvalue
3) n-Nitrosodimethylamine	3.702	42	1491	0.465	ng	# 90	
6) bis(2-Chloroethyl)ether	7.248	93	3401	0.464	ng	96	
9) Naphthalene	10.637	128	10117	0.396	ng	100	
10) Hexachlorobutadiene	10.904	225	1908	0.366	ng	# 99	
12) 2-Methylnaphthalene	12.246	142	6801	0.424	ng	98	
16) Acenaphthylene	14.140	152	11109	0.434	ng	98	
17) Acenaphthene	14.482	154	6639	0.391	ng	100	
18) Fluorene	15.476	166	9426	0.438	ng	98	
20) 4,6-Dinitro-2-methylph...	15.570	198	561	0.243	ng	90	
21) 4-Bromophenyl-phenylether	16.365	248	2646	0.366	ng	# 66	
22) Hexachlorobenzene	16.464	284	3258	0.367	ng	97	
23) Atrazine	16.663	200	2441	0.386	ng	94	
24) Pentachlorophenol	16.824	266	1398	0.339	ng	98	
25) Phenanthrene	17.209	178	13338	0.385	ng	97	
26) Anthracene	17.308	178	12348	0.385	ng	99	
28) Fluoranthene	19.237	202	15776	0.438	ng	# 97	
30) Pyrene	19.604	202	16204	0.380	ng	100	
32) Benzo(a)anthracene	21.356	228	12279	0.390	ng	97	
33) Chrysene	21.410	228	11424	0.369	ng	95	
34) Bis(2-ethylhexyl)phtha...	21.302	149	12952	0.193	ng	# 86	
36) Indeno(1,2,3-cd)pyrene	26.102	276	10850	0.386	ng	# 94	
37) Benzo(b)fluoranthene	22.997	252	10883	0.412	ng	# 41	
38) Benzo(k)fluoranthene	23.044	252	10106	0.405	ng	# 42	
39) Benzo(a)pyrene	23.602	252	9107	0.386	ng	# 37	
40) Dibenzo(a,h)anthracene	26.131	278	8670	0.398	ng	# 37	
41) Benzo(g,h,i)perylene	26.842	276	9286	0.379	ng	# 78	

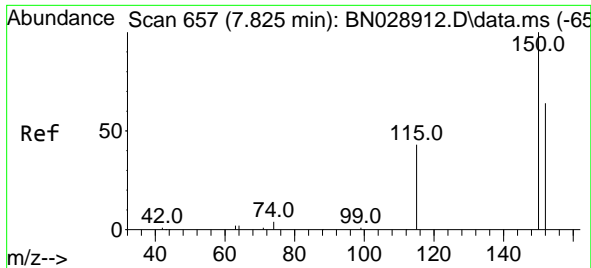
(#) = qualifier out of range (m) = manual integration (+) = signals summed

Data Path : Z:\svoasrv\HPCHEM1\BNA\_N\Data\BN120123\  
 Data File : BN028951.D  
 Acq On : 01 Dec 2023 17:34  
 Operator : MA/JU  
 Sample : SSTDCCC0.4  
 Misc :  
 ALS Vial : 2 Sample Multiplier: 1

Instrument :  
 BNA\_N  
 ClientSampleId :  
 SSTDCCC0.4

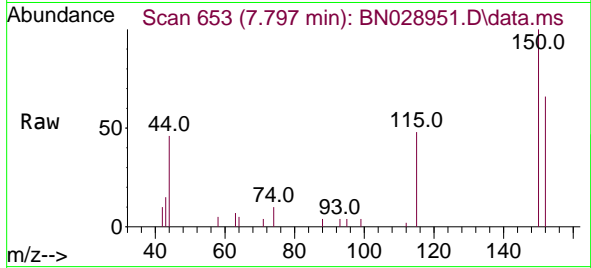
Quant Time: Dec 01 23:12:25 2023  
 Quant Method : Z:\svoasrv\HPCHEM1\BNA\_N\Methods\8270-SIM-BN113023.M  
 Quant Title : ASP BNA STANDARDS FOR 5 POINT CALIBRATION  
 QLast Update : Fri Dec 01 23:11:55 2023  
 Response via : Initial Calibration



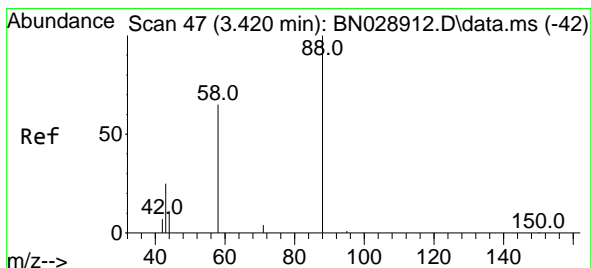
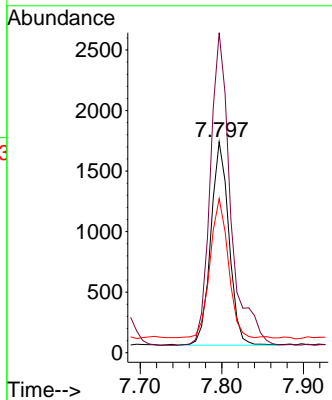
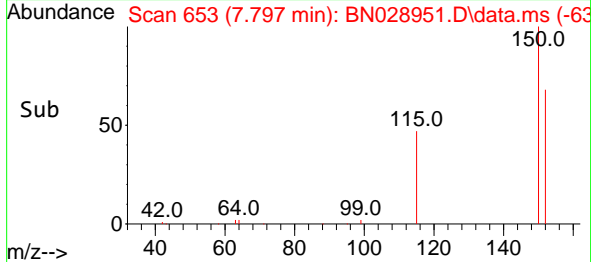


#1  
 1,4-Dichlorobenzene-d4  
 Concen: 0.400 ng  
 RT: 7.797 min Scan# 61  
 Delta R.T. -0.000 min  
 Lab File: BN028951.D  
 Acq: 01 Dec 2023 17:34

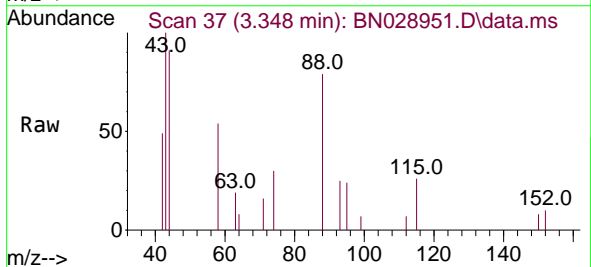
Instrument :  
 BNA\_N  
 ClientSampleId :  
 SSTDCCC0.4



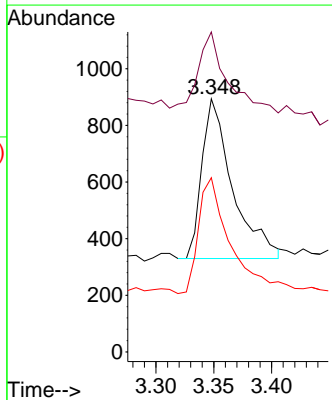
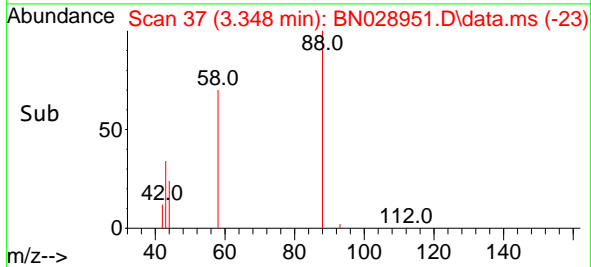
Tgt Ion:152 Resp: 2592  
 Ion Ratio Lower Upper  
 152 100  
 150 151.7 123.4 185.2  
 115 73.1 59.1 88.7

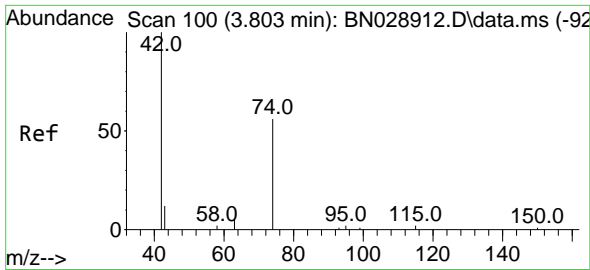


#2  
 1,4-Dioxane  
 Concen: 0.412 ng  
 RT: 3.348 min Scan# 37  
 Delta R.T. 0.000 min  
 Lab File: BN028951.D  
 Acq: 01 Dec 2023 17:34



Tgt Ion: 88 Resp: 1045  
 Ion Ratio Lower Upper  
 88 100  
 43 48.9 29.9 44.9#  
 58 73.1 55.0 82.4

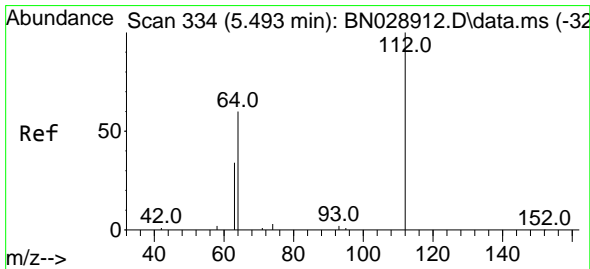
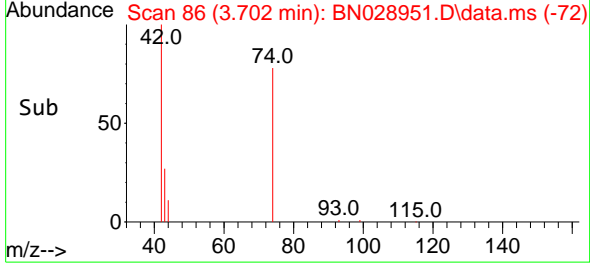
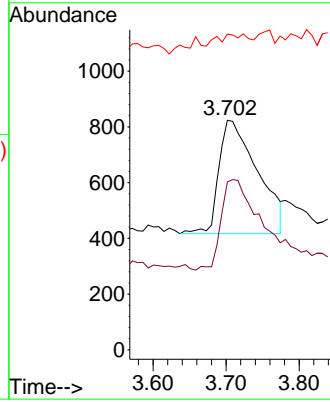
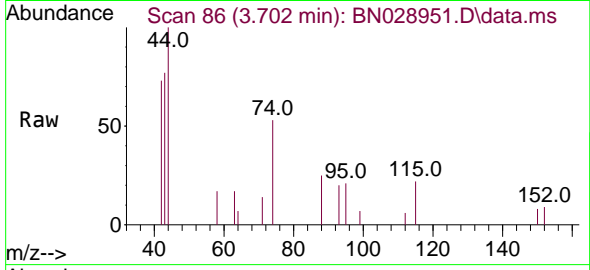




#3  
 n-Nitrosodimethylamine  
 Concen: 0.465 ng  
 RT: 3.702 min Scan# 80  
 Delta R.T. 0.000 min  
 Lab File: BN028951.D  
 Acq: 01 Dec 2023 17:34

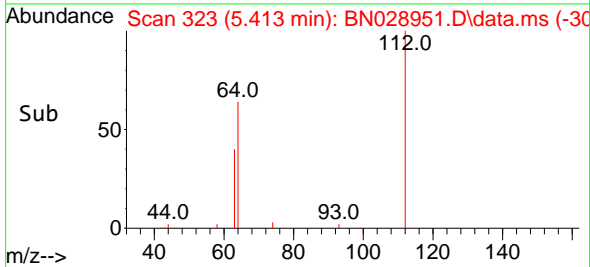
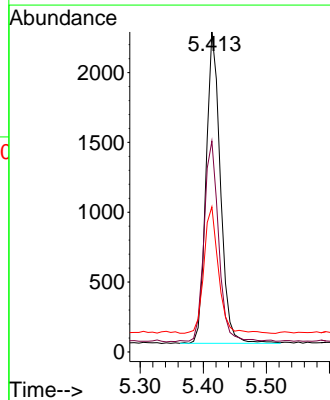
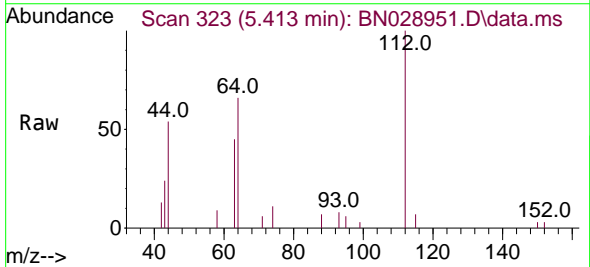
Instrument :  
 BNA\_N  
 ClientSampleId :  
 SSTDCCC0.4

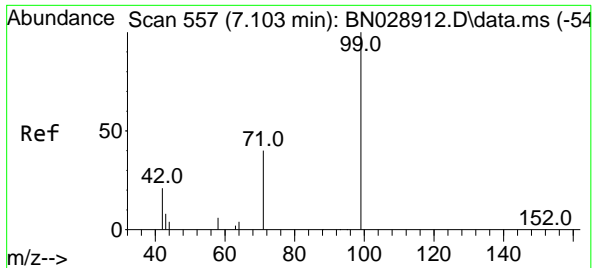
Tgt Ion: 42 Resp: 1491  
 Ion Ratio Lower Upper  
 42 100  
 74 79.3 57.0 85.6  
 44 0.0 0.0 0.0



#4  
 2-Fluorophenol  
 Concen: 0.448 ng  
 RT: 5.413 min Scan# 323  
 Delta R.T. 0.000 min  
 Lab File: BN028951.D  
 Acq: 01 Dec 2023 17:34

Tgt Ion: 112 Resp: 3515  
 Ion Ratio Lower Upper  
 112 100  
 64 66.1 51.5 77.3  
 63 41.4 30.4 45.6

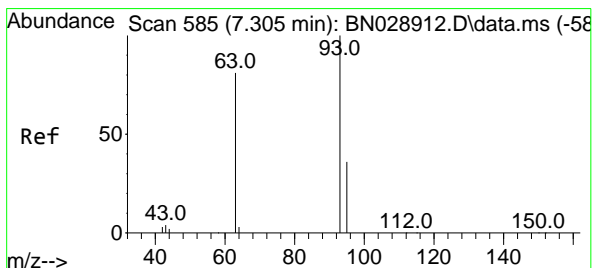
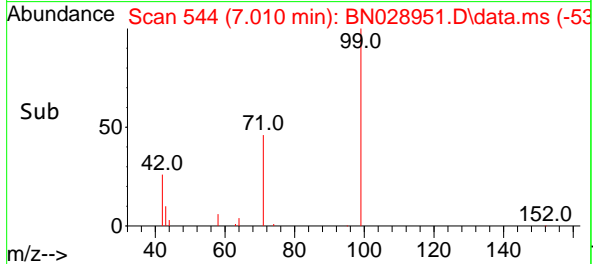
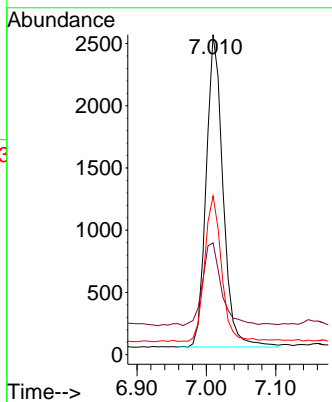
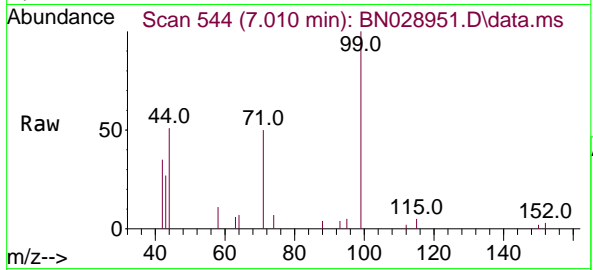




#5  
 Phenol-d6  
 Concen: 0.485 ng  
 RT: 7.010 min Scan# 544  
 Delta R.T. 0.000 min  
 Lab File: BN028951.D  
 Acq: 01 Dec 2023 17:34

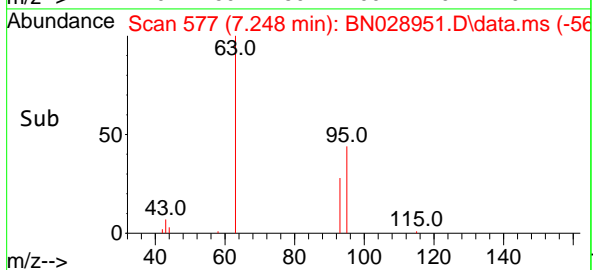
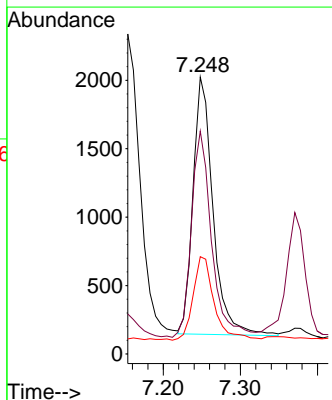
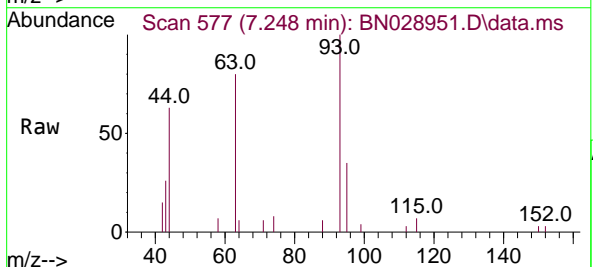
Instrument : BNA\_N  
 ClientSampleId : SSTDCCC0.4

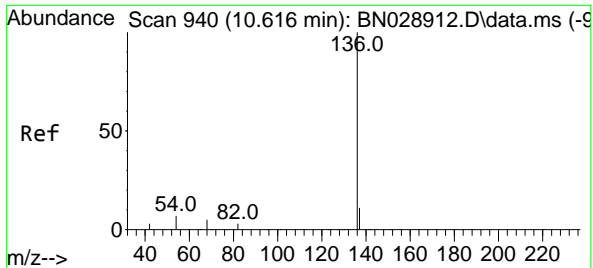
Tgt Ion	Resp	Ion Ratio	Lower	Upper
99	4226	100		
42		30.1	21.2	31.8
71		46.6	35.4	53.0



#6  
 bis(2-Chloroethyl)ether  
 Concen: 0.464 ng  
 RT: 7.248 min Scan# 577  
 Delta R.T. 0.000 min  
 Lab File: BN028951.D  
 Acq: 01 Dec 2023 17:34

Tgt Ion	Resp	Ion Ratio	Lower	Upper
93	3401	100		
63		79.9	66.9	100.3
95		34.1	28.2	42.4



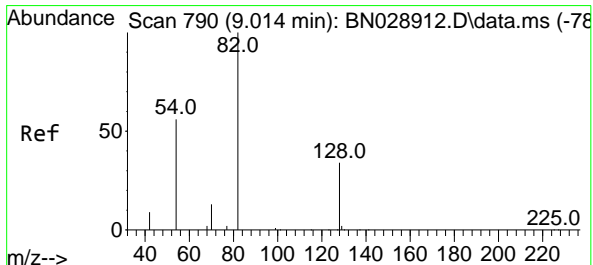
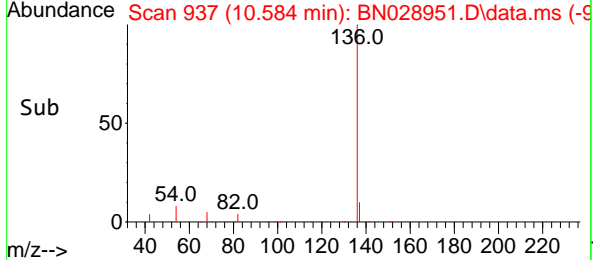
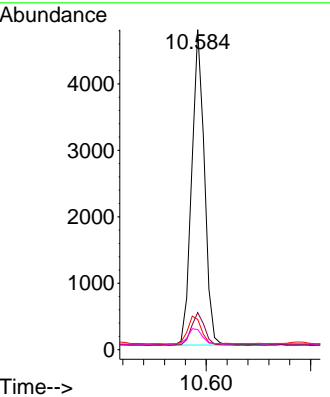
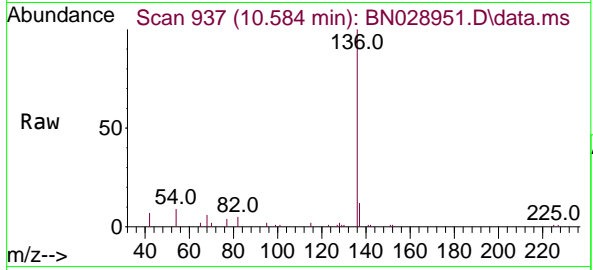


#7  
 Naphthalene-d8  
 Concen: 0.400 ng  
 RT: 10.584 min Scan# 911  
 Delta R.T. 0.000 min  
 Lab File: BN028951.D  
 Acq: 01 Dec 2023 17:34

Instrument : BNA\_N  
 ClientSampleId : SSTDCCC0.4

Tgt Ion:136 Resp: 8031

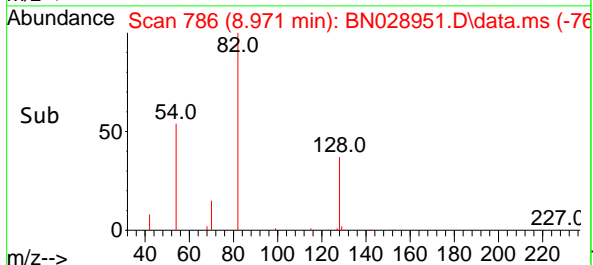
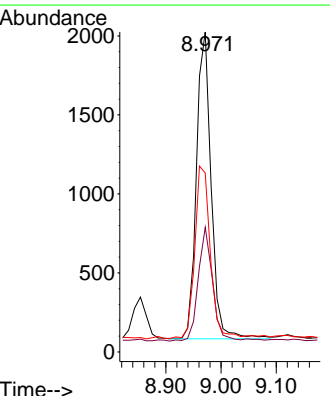
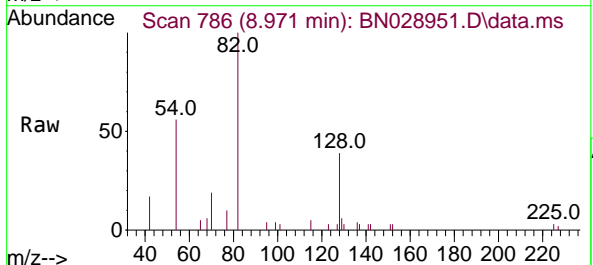
Ion	Ratio	Lower	Upper
136	100		
137	11.6	10.6	16.0
54	9.5	7.5	11.3
68	6.3	5.9	8.9

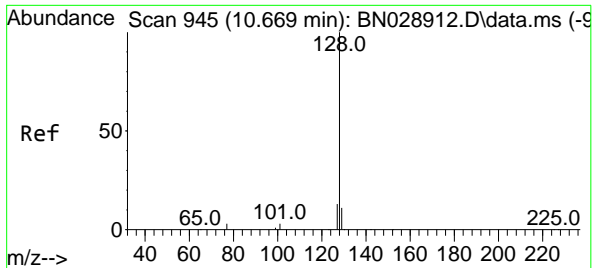


#8  
 Nitrobenzene-d5  
 Concen: 0.453 ng  
 RT: 8.971 min Scan# 786  
 Delta R.T. 0.000 min  
 Lab File: BN028951.D  
 Acq: 01 Dec 2023 17:34

Tgt Ion: 82 Resp: 3617

Ion	Ratio	Lower	Upper
82	100		
128	39.0	29.2	43.8
54	55.9	47.0	70.6



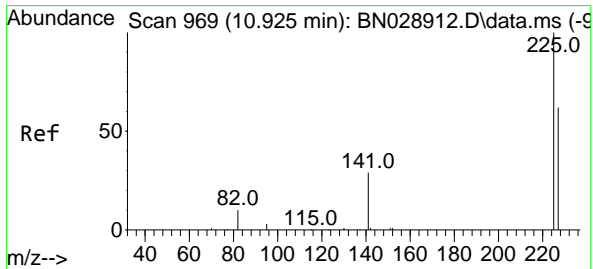
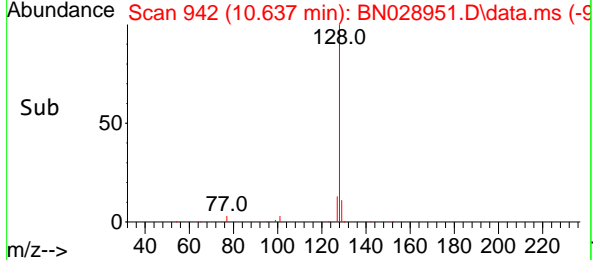
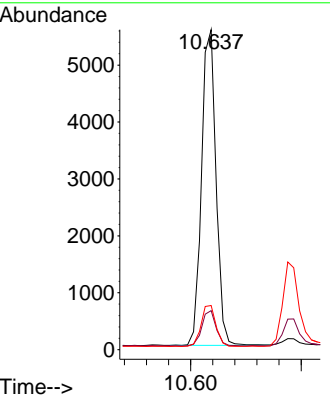
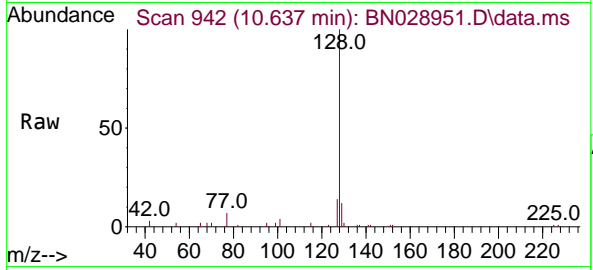


#9  
 Naphthalene  
 Concen: 0.396 ng  
 RT: 10.637 min Scan# 94  
 Delta R.T. 0.000 min  
 Lab File: BN028951.D  
 Acq: 01 Dec 2023 17:34

Instrument : BNA\_N  
 ClientSampleId : SSTDCCC0.4

Tgt Ion:128 Resp: 10117

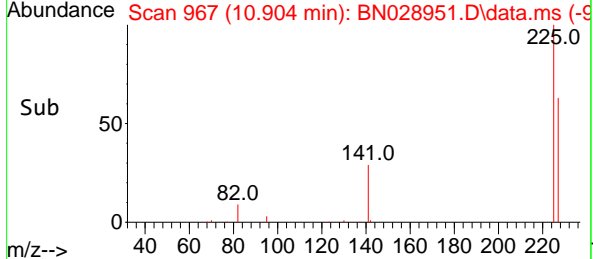
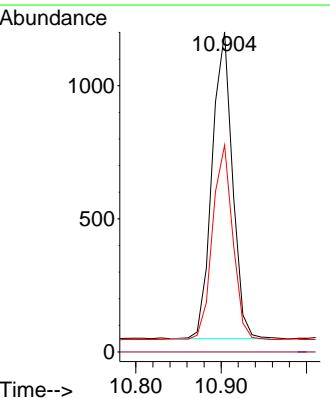
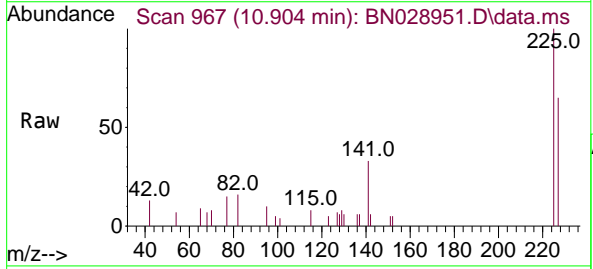
Ion	Ratio	Lower	Upper
128	100		
129	12.2	9.5	14.3
127	13.8	11.0	16.4

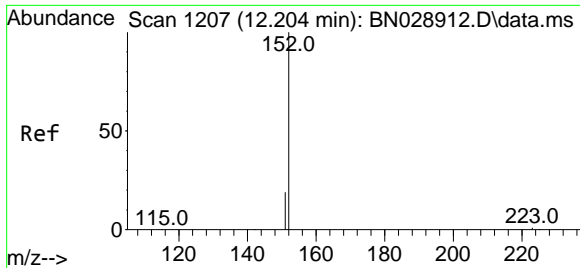


#10  
 Hexachlorobutadiene  
 Concen: 0.366 ng  
 RT: 10.904 min Scan# 967  
 Delta R.T. 0.000 min  
 Lab File: BN028951.D  
 Acq: 01 Dec 2023 17:34

Tgt Ion:225 Resp: 1908

Ion	Ratio	Lower	Upper
225	100		
223	0.0	0.0	0.0
227	62.7	50.6	76.0

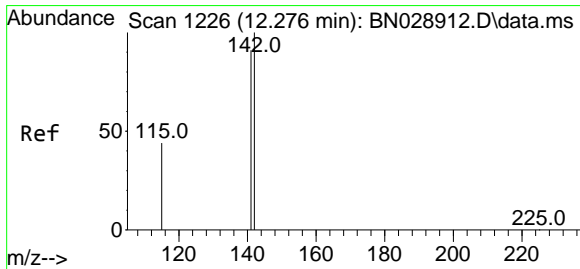
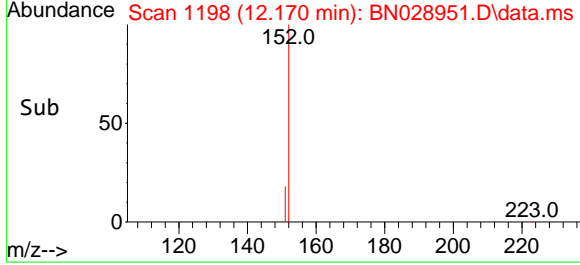
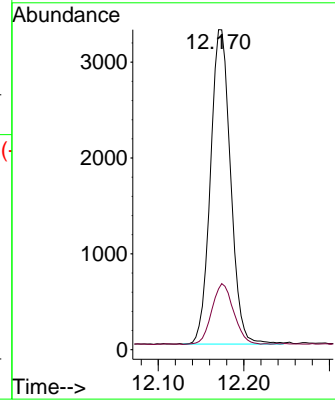
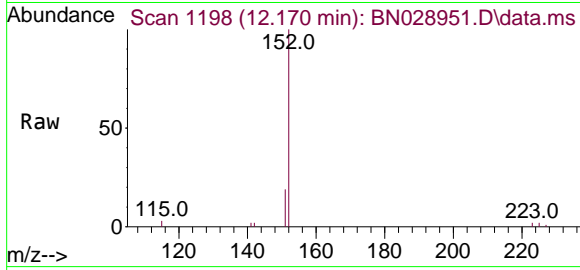




#11  
 2-Methylnaphthalene-d10  
 Concen: 0.417 ng  
 RT: 12.170 min Scan# 1118  
 Delta R.T. 0.000 min  
 Lab File: BN028951.D  
 Acq: 01 Dec 2023 17:34

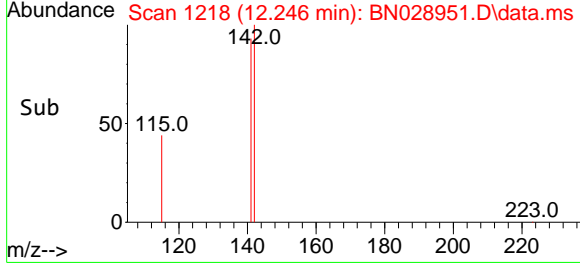
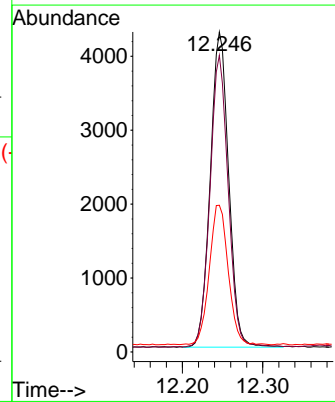
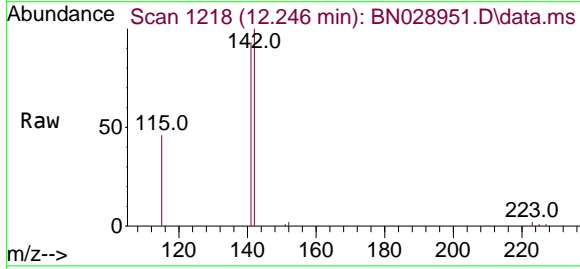
Instrument : BNA\_N  
 ClientSampleId : SSTDCCC0.4

Tgt Ion:152 Resp: 5371  
 Ion Ratio Lower Upper  
 152 100  
 151 21.0 16.7 25.1

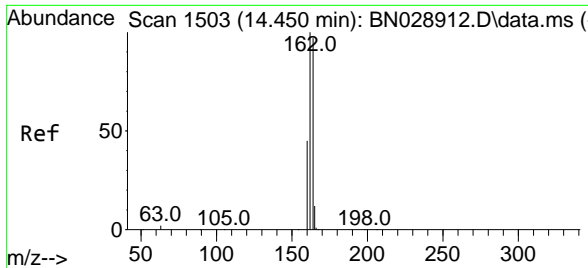


#12  
 2-Methylnaphthalene  
 Concen: 0.424 ng  
 RT: 12.246 min Scan# 1218  
 Delta R.T. 0.000 min  
 Lab File: BN028951.D  
 Acq: 01 Dec 2023 17:34

Tgt Ion:142 Resp: 6801  
 Ion Ratio Lower Upper  
 142 100  
 141 92.7 73.1 109.7  
 115 45.8 37.6 56.4





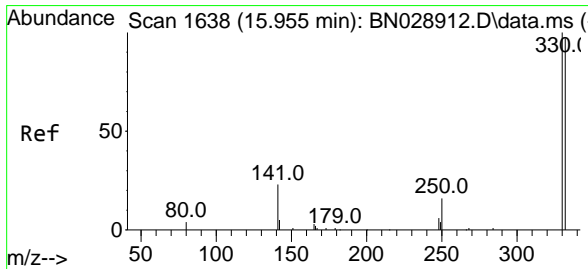
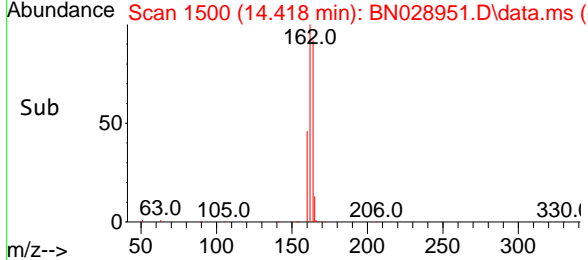
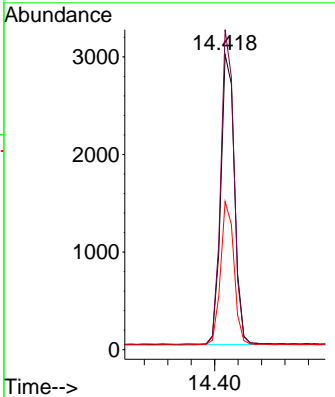
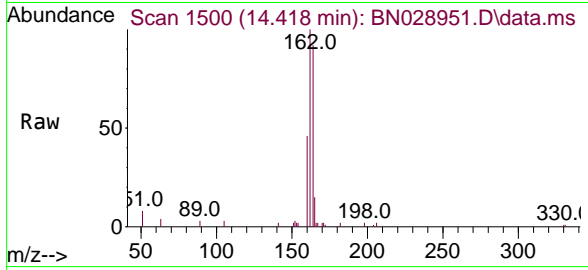


#13  
 Acenaphthene-d10  
 Concen: 0.400 ng  
 RT: 14.418 min Scan# 11  
 Delta R.T. 0.000 min  
 Lab File: BN028951.D  
 Acq: 01 Dec 2023 17:34

Instrument : BNA\_N  
 ClientSampleId : SSTDCCC0.4

Tgt Ion:164 Resp: 4830

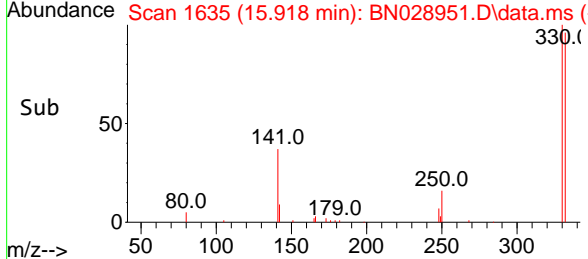
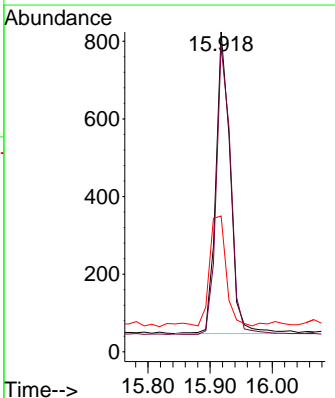
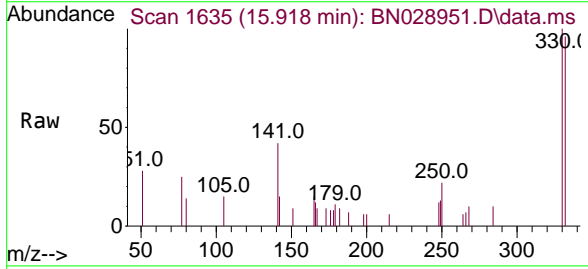
Ion	Ratio	Lower	Upper
164	100		
162	108.5	81.7	122.5
160	50.2	37.0	55.6

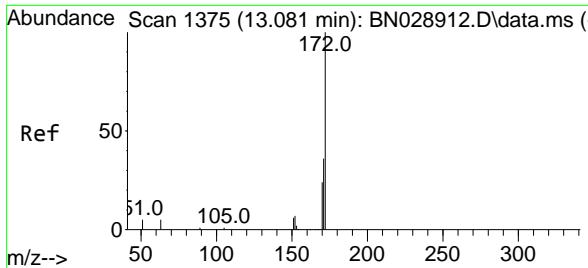


#14  
 2,4,6-Tribromophenol  
 Concen: 0.382 ng  
 RT: 15.918 min Scan# 1635  
 Delta R.T. 0.000 min  
 Lab File: BN028951.D  
 Acq: 01 Dec 2023 17:34

Tgt Ion:330 Resp: 1247

Ion	Ratio	Lower	Upper
330	100		
332	95.7	75.4	113.2
141	41.5	35.7	53.5



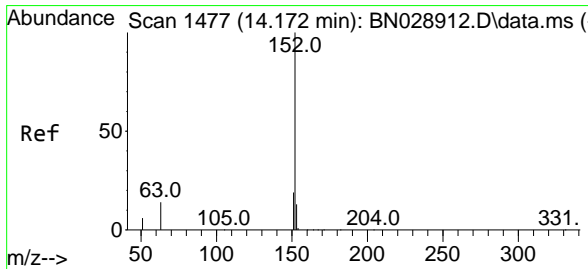
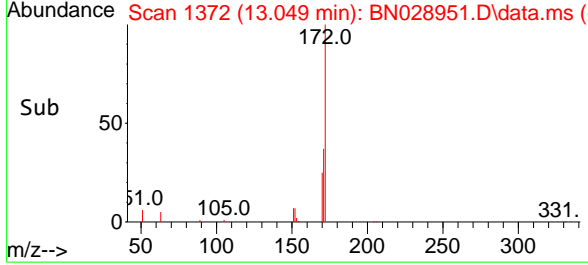
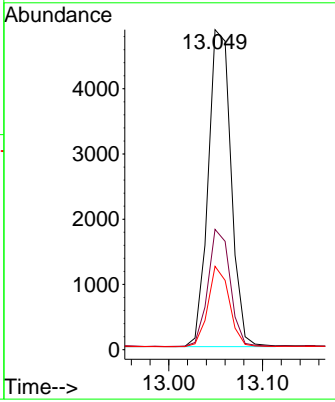
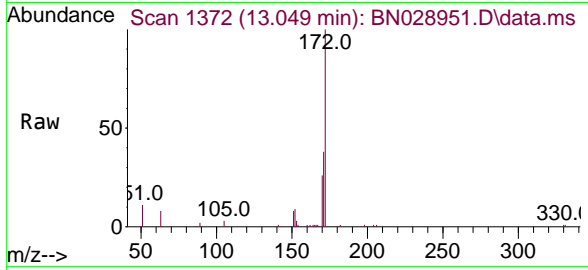


#15  
 2-Fluorobiphenyl  
 Concen: 0.396 ng  
 RT: 13.049 min Scan# 11  
 Delta R.T. 0.000 min  
 Lab File: BN028951.D  
 Acq: 01 Dec 2023 17:34

Instrument : BNA\_N  
 ClientSampleId : SSTDCCC0.4

Tgt Ion:172 Resp: 8252

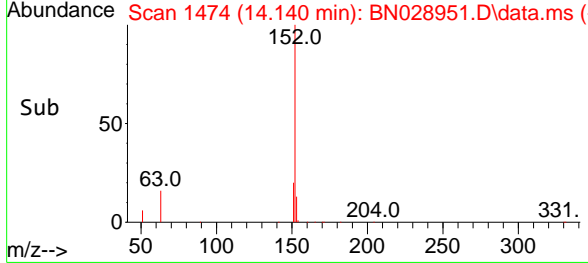
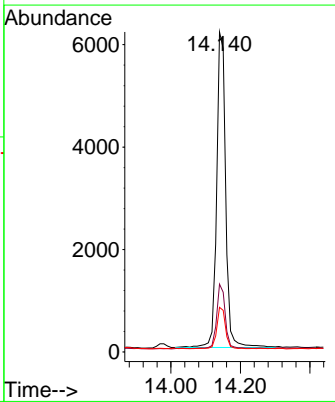
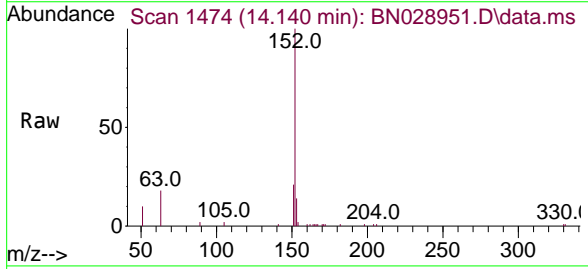
Ion	Ratio	Lower	Upper
172	100		
171	37.6	29.0	43.4
170	26.0	19.7	29.5

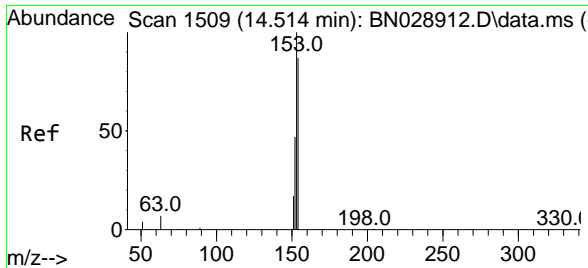


#16  
 Acenaphthylene  
 Concen: 0.434 ng  
 RT: 14.140 min Scan# 1474  
 Delta R.T. 0.000 min  
 Lab File: BN028951.D  
 Acq: 01 Dec 2023 17:34

Tgt Ion:152 Resp: 11109

Ion	Ratio	Lower	Upper
152	100		
151	19.5	15.9	23.9
153	12.4	10.8	16.2



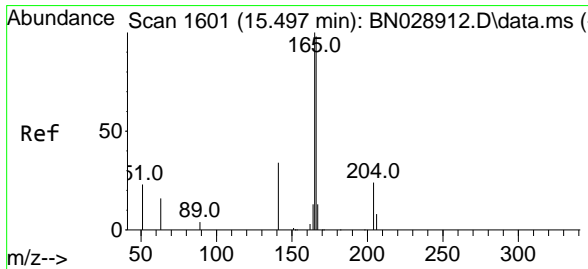
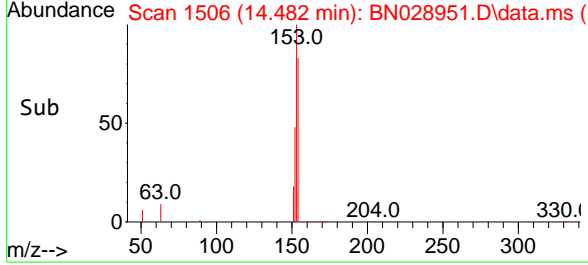
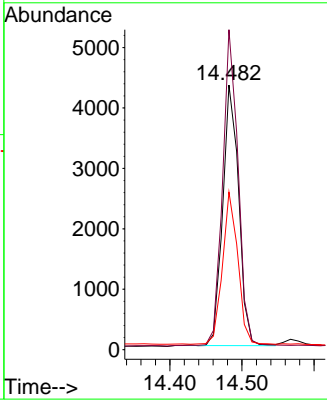
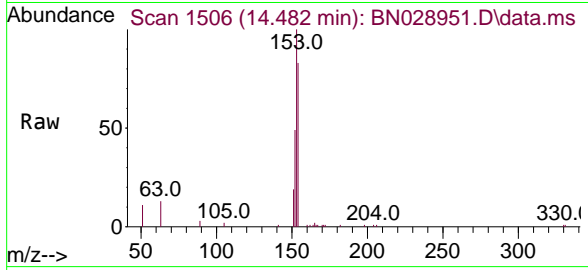


#17  
 Acenaphthene  
 Concen: 0.391 ng  
 RT: 14.482 min Scan# 1599  
 Delta R.T. 0.000 min  
 Lab File: BN028951.D  
 Acq: 01 Dec 2023 17:34

Instrument : BNA\_N  
 ClientSampleId : SSTDCCC0.4

Tgt Ion:154 Resp: 6639

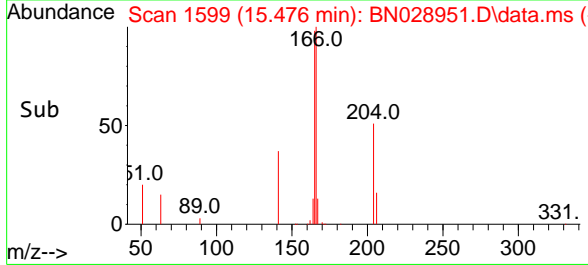
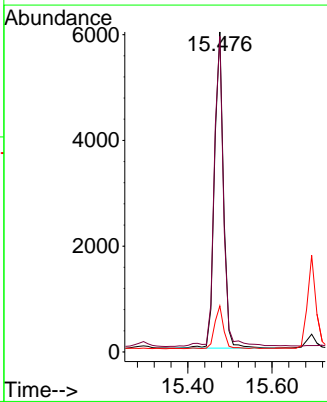
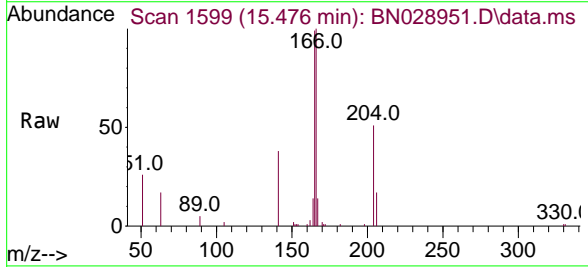
Ion	Ratio	Lower	Upper
154	100		
153	117.1	93.8	140.6
152	55.8	44.5	66.7

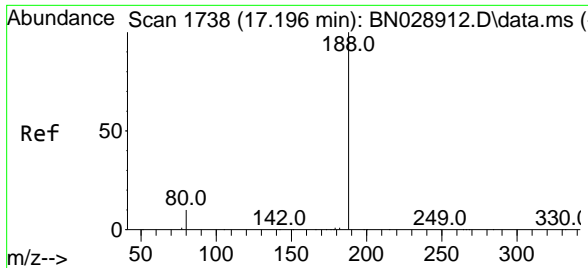


#18  
 Fluorene  
 Concen: 0.438 ng  
 RT: 15.476 min Scan# 1599  
 Delta R.T. 0.000 min  
 Lab File: BN028951.D  
 Acq: 01 Dec 2023 17:34

Tgt Ion:166 Resp: 9426

Ion	Ratio	Lower	Upper
166	100		
165	101.5	79.4	119.2
167	13.0	11.0	16.4



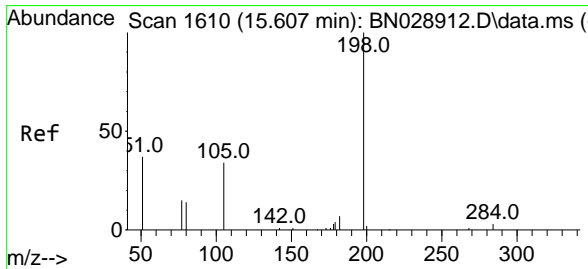
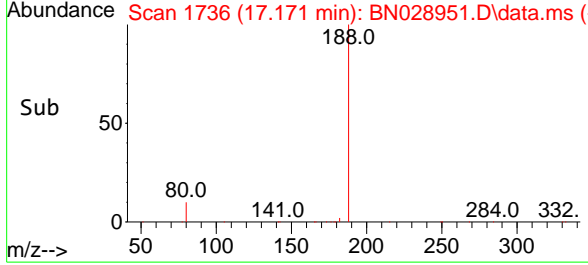
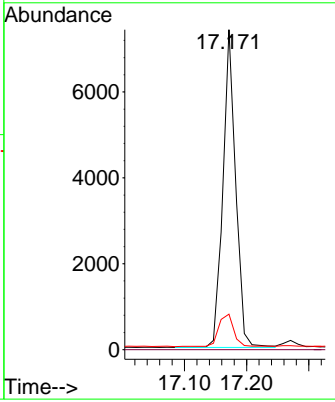
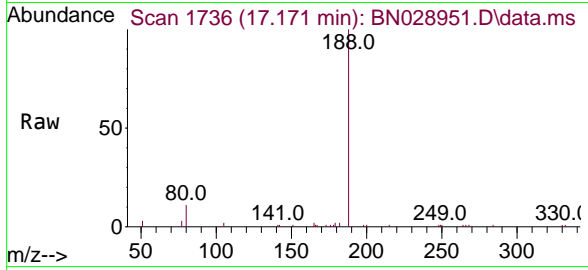


#19  
 Phenanthrene-d10  
 Concen: 0.400 ng  
 RT: 17.171 min Scan# 11  
 Delta R.T. 0.000 min  
 Lab File: BN028951.D  
 Acq: 01 Dec 2023 17:34

Instrument : BNA\_N  
 ClientSampleId : SSTDCCC0.4

Tgt Ion:188 Resp: 10500

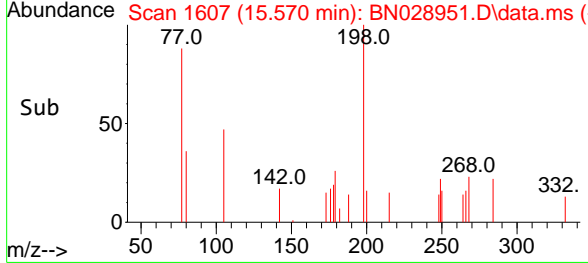
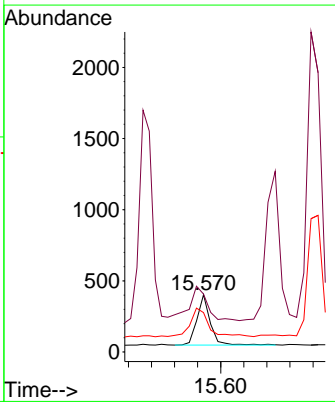
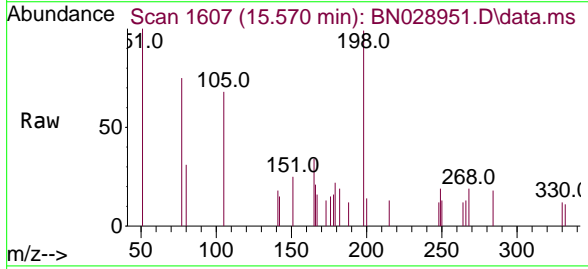
Ion	Ratio	Lower	Upper
188	100		
94	0.0	0.0	0.0
80	11.1	9.0	13.6

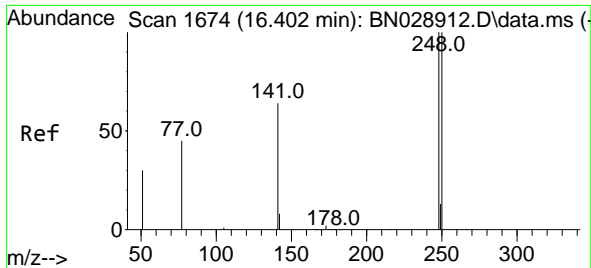


#20  
 4,6-Dinitro-2-methylphenol  
 Concen: 0.243 ng  
 RT: 15.570 min Scan# 1607  
 Delta R.T. 0.000 min  
 Lab File: BN028951.D  
 Acq: 01 Dec 2023 17:34

Tgt Ion:198 Resp: 561

Ion	Ratio	Lower	Upper
198	100		
51	101.2	76.2	114.4
105	68.7	64.9	97.3



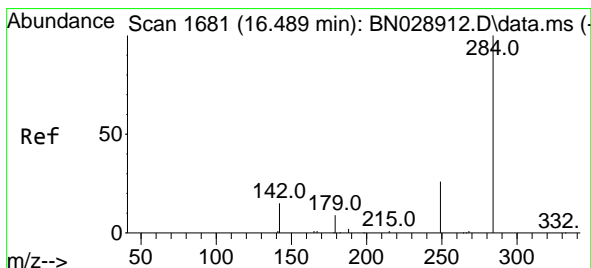
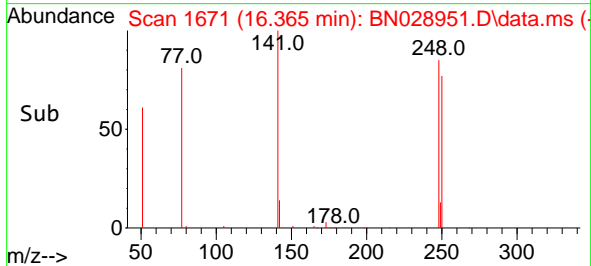
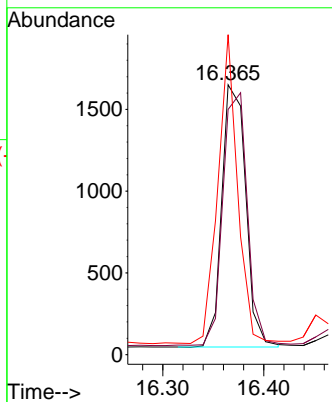
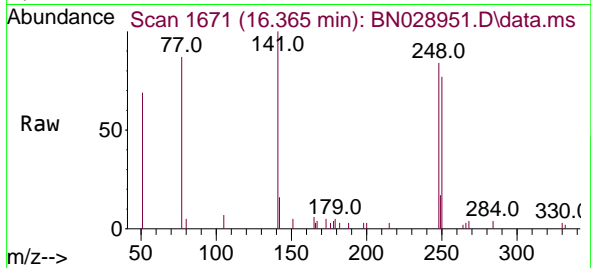


#21  
 4-Bromophenyl-phenylether  
 Concen: 0.366 ng  
 RT: 16.365 min Scan# 1670  
 Delta R.T. 0.000 min  
 Lab File: BN028951.D  
 Acq: 01 Dec 2023 17:34

Instrument :  
 BNA\_N  
 ClientSampleId :  
 SSTDCCC0.4

Tgt Ion:248 Resp: 2646

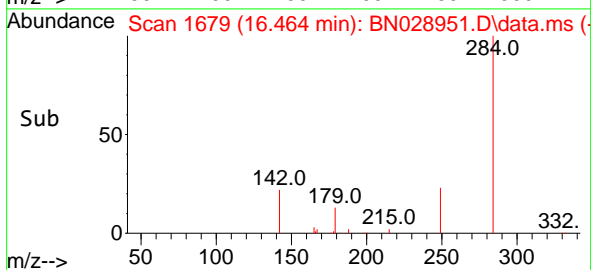
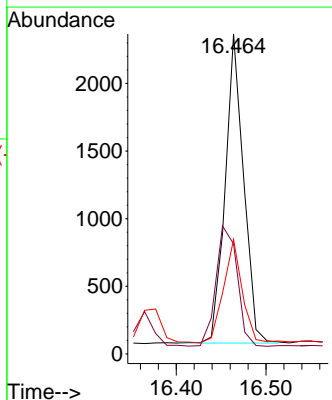
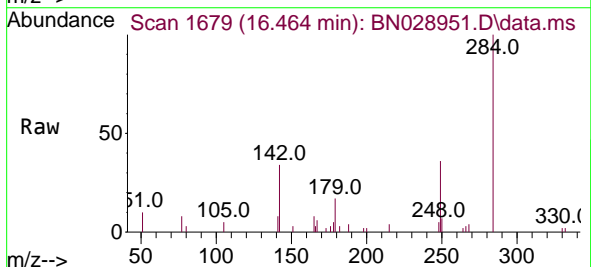
Ion	Ratio	Lower	Upper
248	100		
250	90.9	83.5	125.3
141	118.5	52.9	79.3#

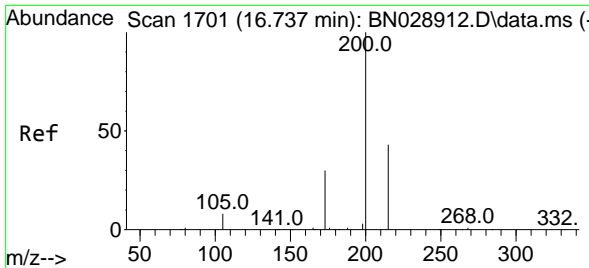


#22  
 Hexachlorobenzene  
 Concen: 0.367 ng  
 RT: 16.464 min Scan# 1679  
 Delta R.T. 0.000 min  
 Lab File: BN028951.D  
 Acq: 01 Dec 2023 17:34

Tgt Ion:284 Resp: 3258

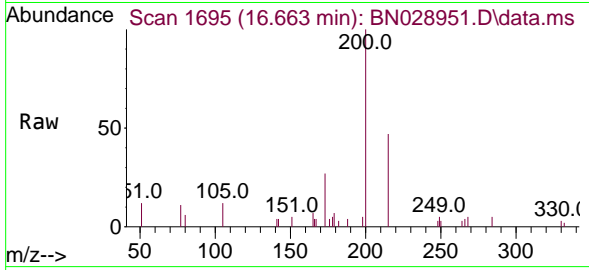
Ion	Ratio	Lower	Upper
284	100		
142	45.0	34.1	51.1
249	33.8	25.7	38.5



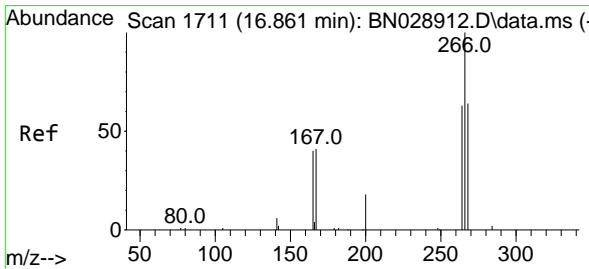
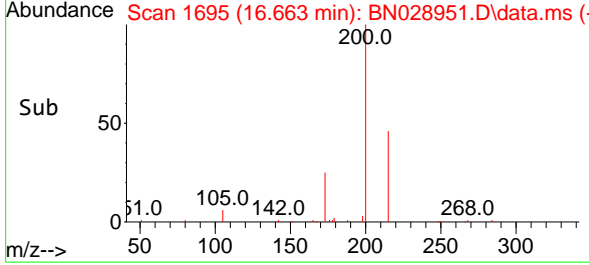
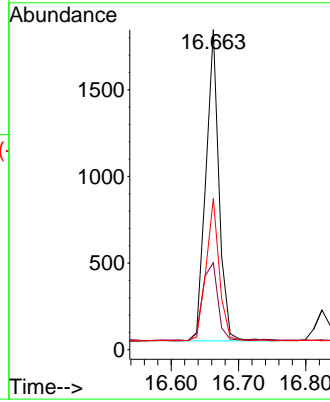


#23  
 Atrazine  
 Concen: 0.386 ng  
 RT: 16.663 min Scan# 1708  
 Delta R.T. 0.000 min  
 Lab File: BN028951.D  
 Acq: 01 Dec 2023 17:34

Instrument :  
 BNA\_N  
 ClientSampleId :  
 SSTDCCC0.4

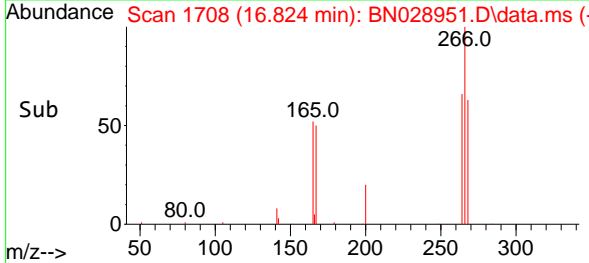
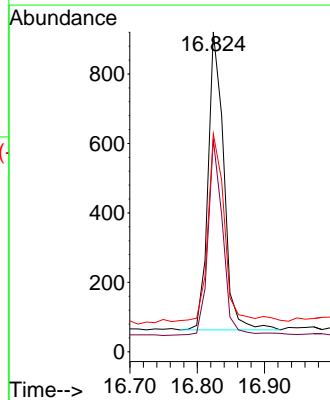
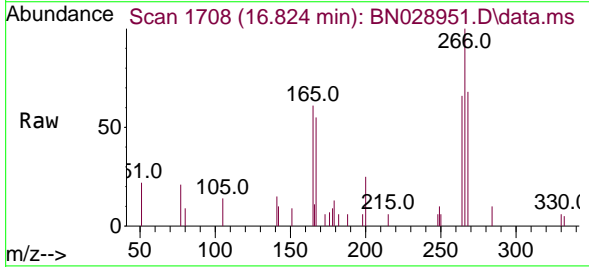


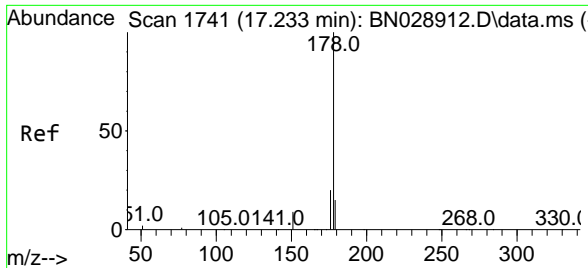
Tgt Ion:200 Resp: 2441  
 Ion Ratio Lower Upper  
 200 100  
 173 27.2 26.2 39.4  
 215 47.3 35.8 53.6



#24  
 Pentachlorophenol  
 Concen: 0.339 ng  
 RT: 16.824 min Scan# 1708  
 Delta R.T. 0.000 min  
 Lab File: BN028951.D  
 Acq: 01 Dec 2023 17:34

Tgt Ion:266 Resp: 1398  
 Ion Ratio Lower Upper  
 266 100  
 264 62.4 50.7 76.1  
 268 66.0 54.9 82.3



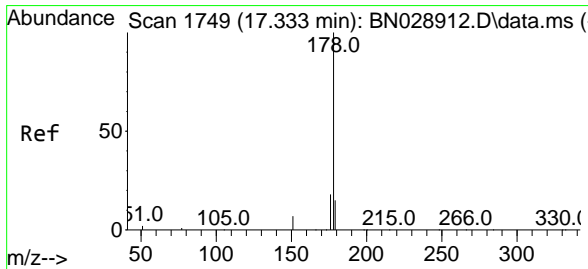
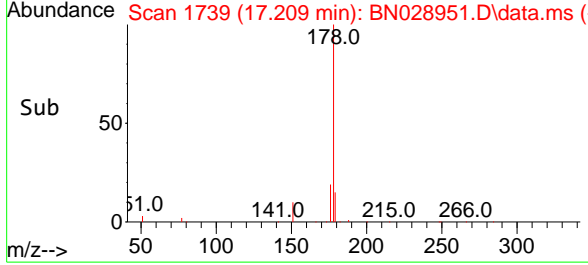
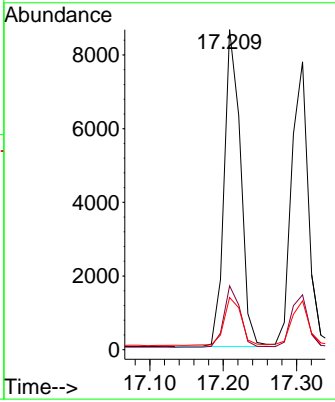
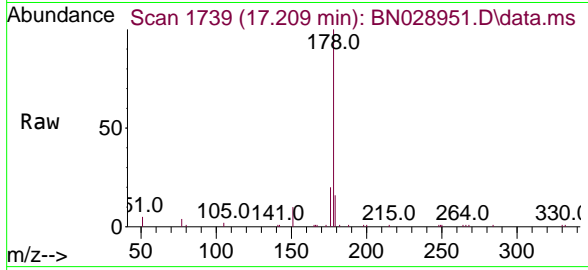


#25  
 Phenanthrene  
 Concen: 0.385 ng  
 RT: 17.209 min Scan# 1739  
 Delta R.T. 0.000 min  
 Lab File: BN028951.D  
 Acq: 01 Dec 2023 17:34

Instrument : BNA\_N  
 ClientSampleId : SSTDCCC0.4

Tgt Ion:178 Resp: 13338

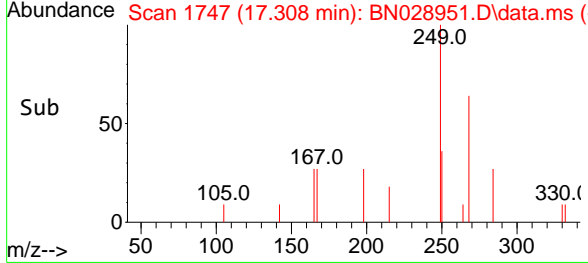
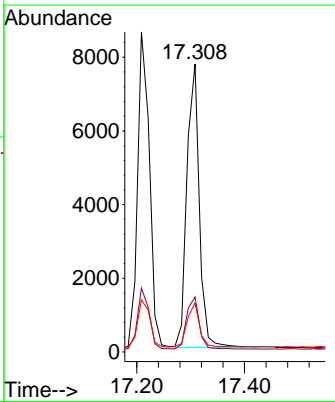
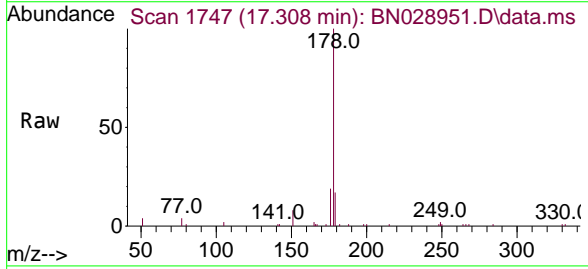
Ion	Ratio	Lower	Upper
178	100		
176	19.3	16.4	24.6
179	16.4	14.1	21.1

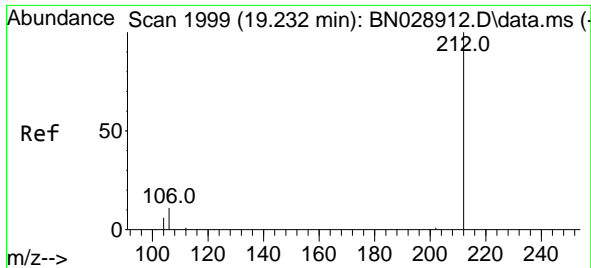


#26  
 Anthracene  
 Concen: 0.385 ng  
 RT: 17.308 min Scan# 1747  
 Delta R.T. 0.000 min  
 Lab File: BN028951.D  
 Acq: 01 Dec 2023 17:34

Tgt Ion:178 Resp: 12348

Ion	Ratio	Lower	Upper
178	100		
176	18.6	15.2	22.8
179	15.6	12.2	18.2



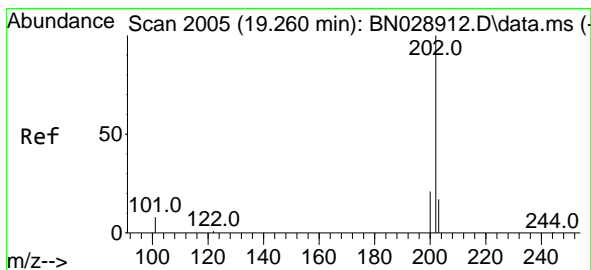
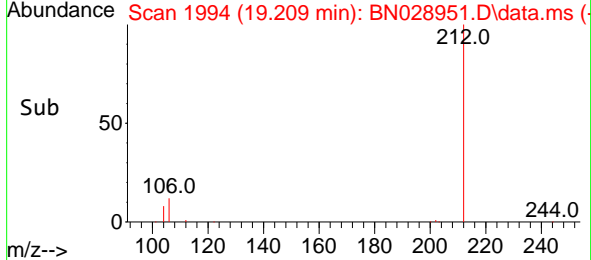
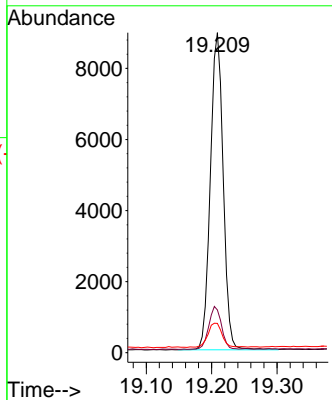
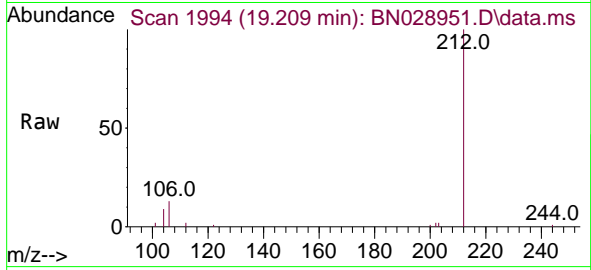


#27  
 Fluoranthene-d10  
 Concen: 0.440 ng  
 RT: 19.209 min Scan# 1994  
 Delta R.T. 0.000 min  
 Lab File: BN028951.D  
 Acq: 01 Dec 2023 17:34

Instrument : BNA\_N  
 ClientSampleId : SSTDCCC0.4

Tgt Ion:212 Resp: 12151

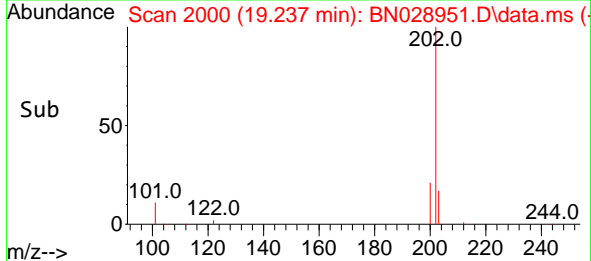
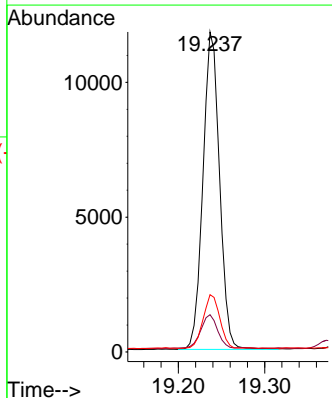
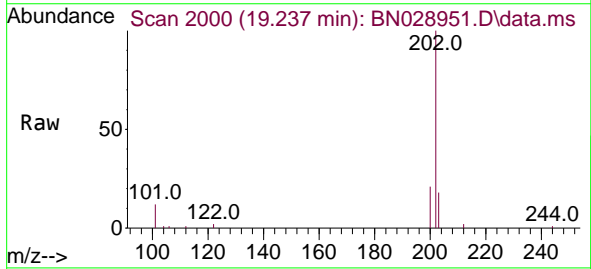
Ion	Ratio	Lower	Upper
212	100		
106	13.3	9.4	14.2
104	8.5	6.2	9.2



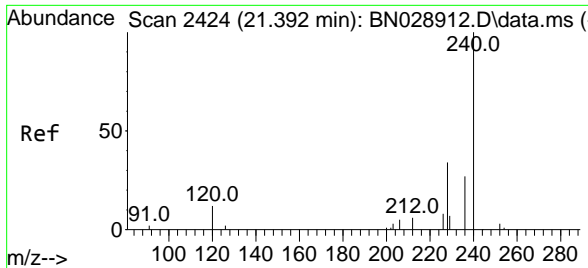
#28  
 Fluoranthene  
 Concen: 0.438 ng  
 RT: 19.237 min Scan# 2000  
 Delta R.T. 0.000 min  
 Lab File: BN028951.D  
 Acq: 01 Dec 2023 17:34

Tgt Ion:202 Resp: 15776

Ion	Ratio	Lower	Upper
202	100		
101	11.0	7.3	10.9#
203	17.1	14.1	21.1



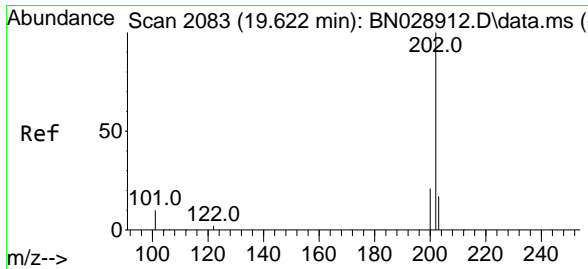
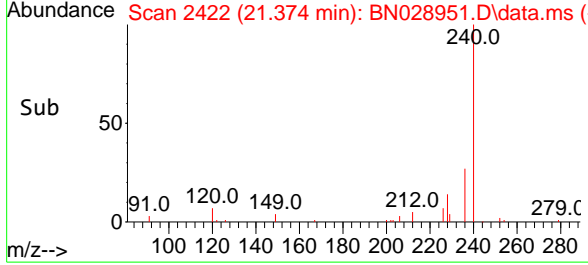
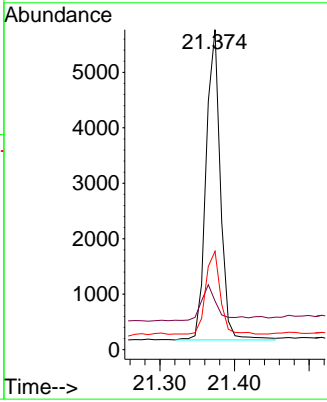
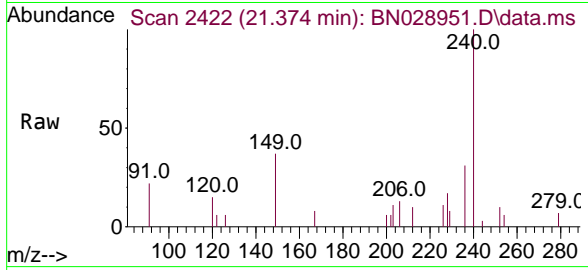




#29  
 Chrysene-d12  
 Concen: 0.400 ng  
 RT: 21.374 min Scan# 2422  
 Delta R.T. 0.000 min  
 Lab File: BN028951.D  
 Acq: 01 Dec 2023 17:34

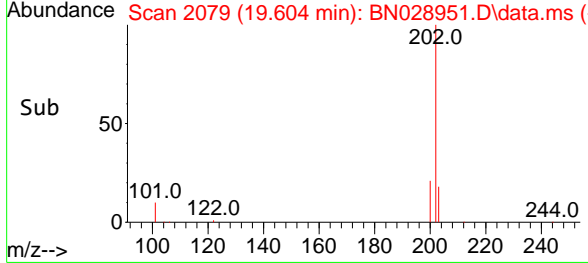
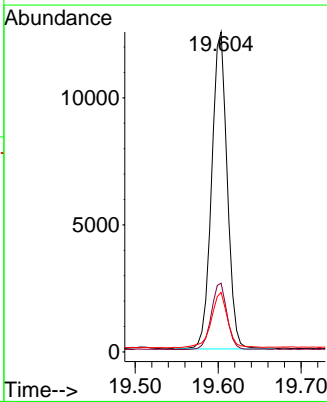
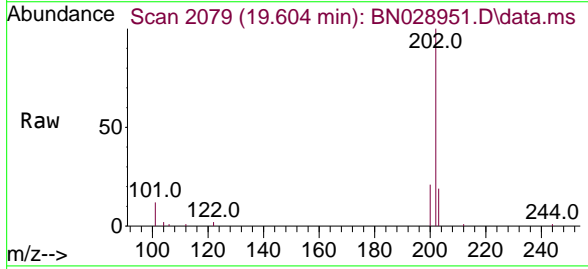
Instrument : BNA\_N  
 ClientSampleId : SSTDCCC0.4

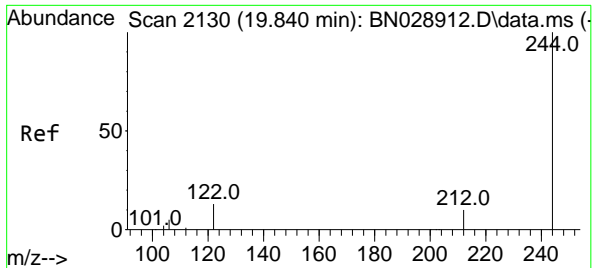
Tgt Ion	Resp	Ion Ratio	Lower	Upper
240	7414	100		
120	15.2	37.1	55.7#	
236	30.8	32.4	48.6#	



#30  
 Pyrene  
 Concen: 0.380 ng  
 RT: 19.604 min Scan# 2079  
 Delta R.T. 0.000 min  
 Lab File: BN028951.D  
 Acq: 01 Dec 2023 17:34

Tgt Ion	Resp	Ion Ratio	Lower	Upper
202	16204	100		
200	21.2	16.9	25.3	
203	18.6	14.8	22.2	



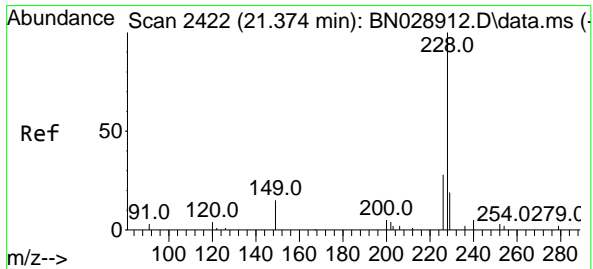
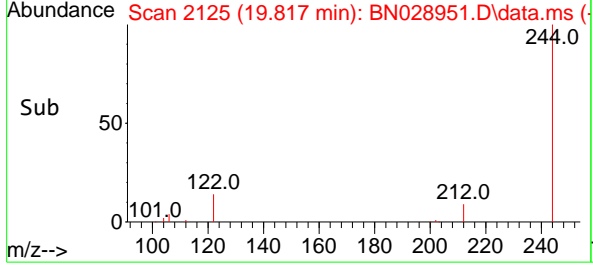
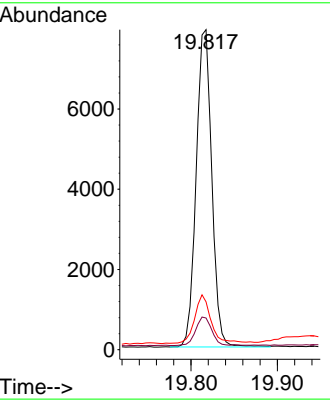
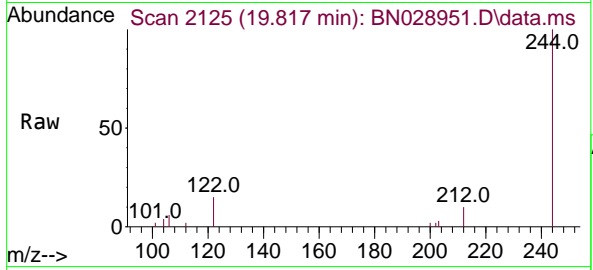


#31  
 Terphenyl-d14  
 Concen: 0.445 ng  
 RT: 19.817 min Scan# 21  
 Delta R.T. 0.000 min  
 Lab File: BN028951.D  
 Acq: 01 Dec 2023 17:34

Instrument : BNA\_N  
 ClientSampleId : SSTDCCC0.4

Tgt Ion:244 Resp: 9961

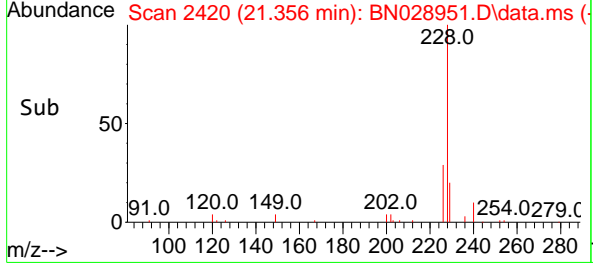
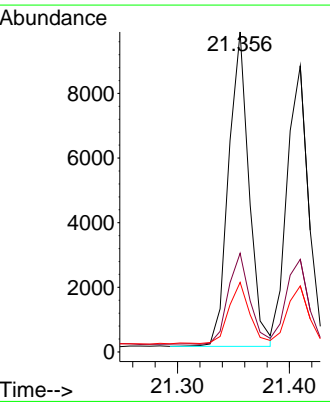
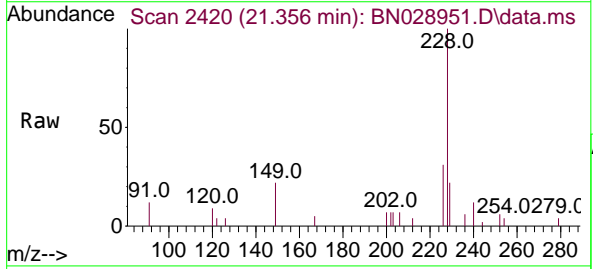
Ion	Ratio	Lower	Upper
244	100		
212	9.9	11.5	17.3#
122	15.0	13.2	19.8

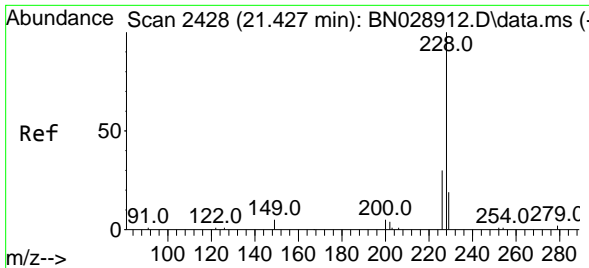


#32  
 Benzo(a)anthracene  
 Concen: 0.390 ng  
 RT: 21.356 min Scan# 2420  
 Delta R.T. 0.000 min  
 Lab File: BN028951.D  
 Acq: 01 Dec 2023 17:34

Tgt Ion:228 Resp: 12279

Ion	Ratio	Lower	Upper
228	100		
226	30.9	26.5	39.7
229	21.8	16.4	24.6

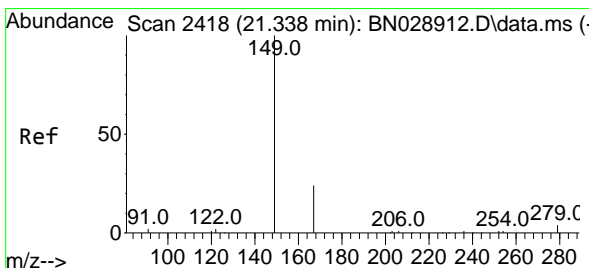
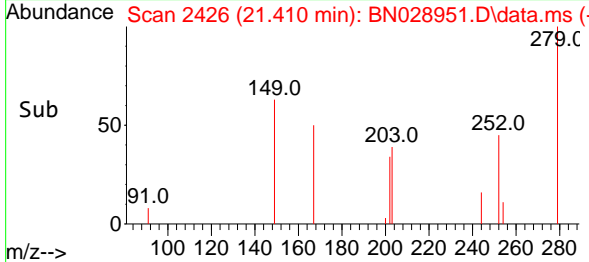
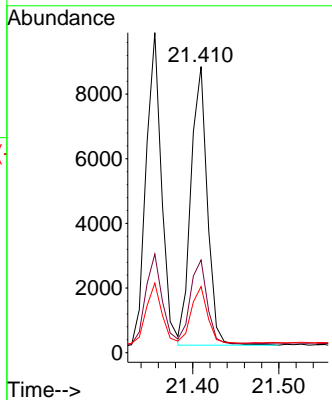
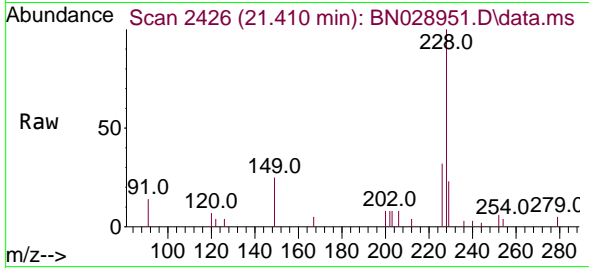




#33  
 Chrysene  
 Concen: 0.369 ng  
 RT: 21.410 min Scan# 2428  
 Delta R.T. 0.000 min  
 Lab File: BN028951.D  
 Acq: 01 Dec 2023 17:34

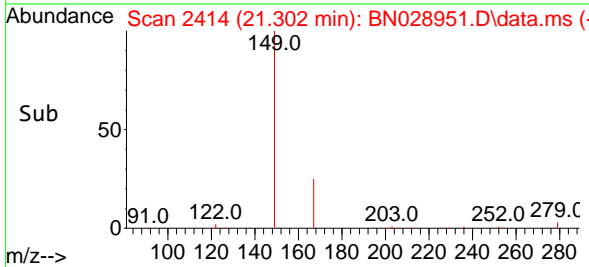
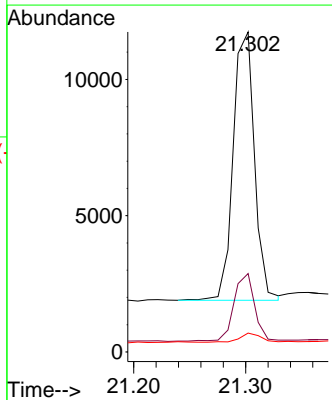
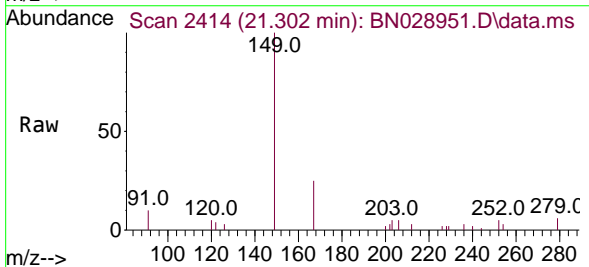
Instrument : BNA\_N  
 ClientSampleId : SSTDCCC0.4

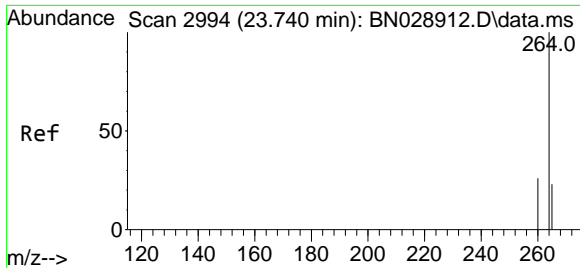
Tgt Ion	Resp	Lower	Upper
228	11424		
226	32.4	28.3	42.5
229	23.1	16.4	24.6



#34  
 Bis(2-ethylhexyl)phthalate  
 Concen: 0.193 ng  
 RT: 21.302 min Scan# 2414  
 Delta R.T. 0.000 min  
 Lab File: BN028951.D  
 Acq: 01 Dec 2023 17:34

Tgt Ion	Resp	Lower	Upper
149	12952		
167	25.0	14.9	22.3#
279	3.6	6.3	9.5#



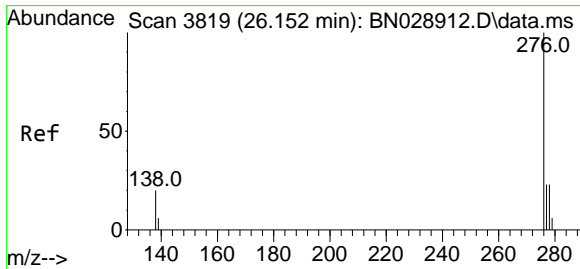
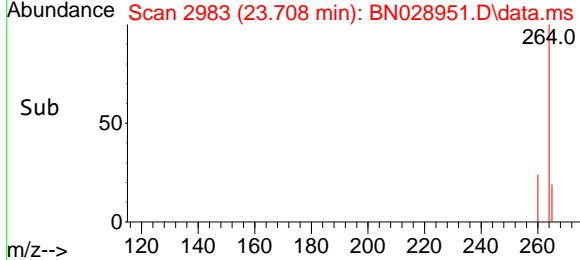
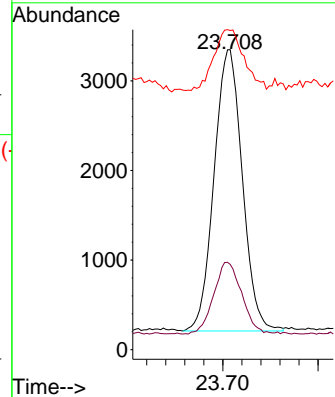
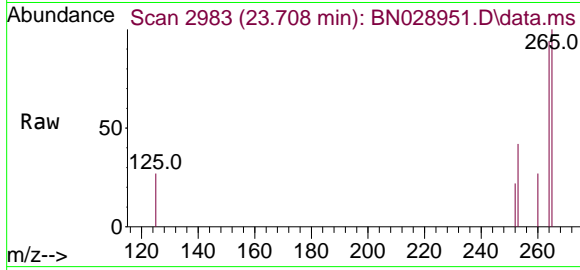


#35  
 Perylene-d12  
 Concen: 0.400 ng  
 RT: 23.708 min Scan# 2994  
 Delta R.T. 0.000 min  
 Lab File: BN028951.D  
 Acq: 01 Dec 2023 17:34

Instrument : BNA\_N  
 ClientSampleId : SSTDCCC0.4

Tgt Ion:264 Resp: 6457

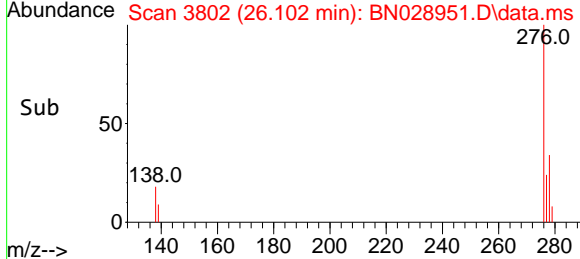
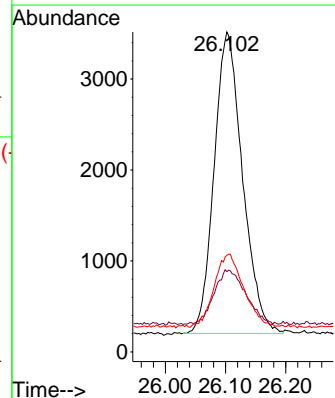
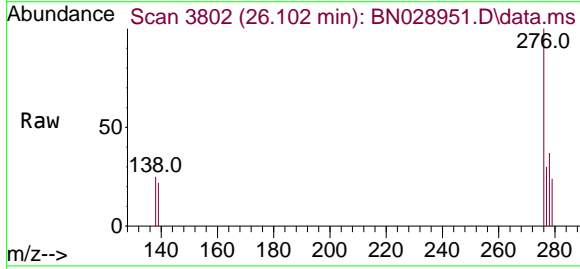
Ion	Ratio	Lower	Upper
264	100		
260	28.5	20.6	30.8
265	106.5	464.5	696.7#

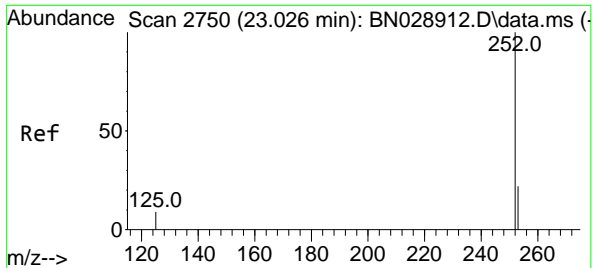


#36  
 Indeno(1,2,3-cd)pyrene  
 Concen: 0.386 ng  
 RT: 26.102 min Scan# 3802  
 Delta R.T. 0.000 min  
 Lab File: BN028951.D  
 Acq: 01 Dec 2023 17:34

Tgt Ion:276 Resp: 10850

Ion	Ratio	Lower	Upper
276	100		
138	20.1	20.9	31.3#
277	25.5	20.2	30.4



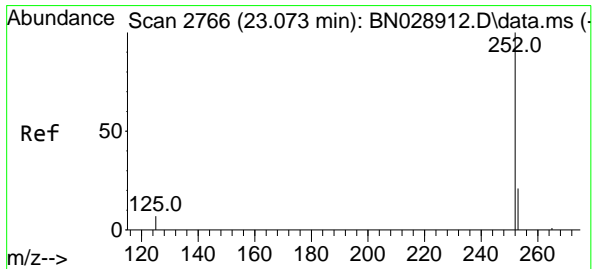
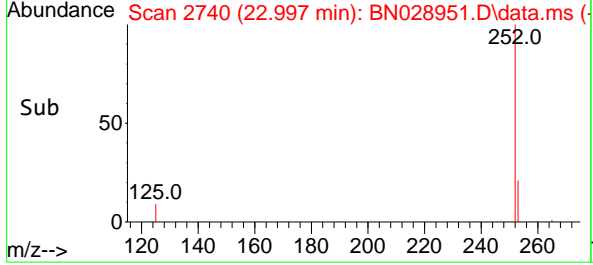
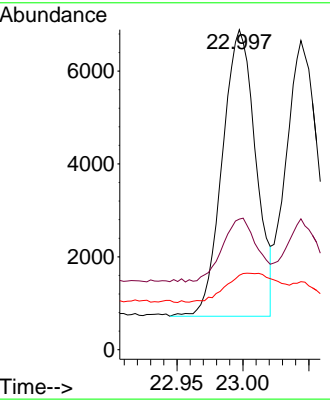
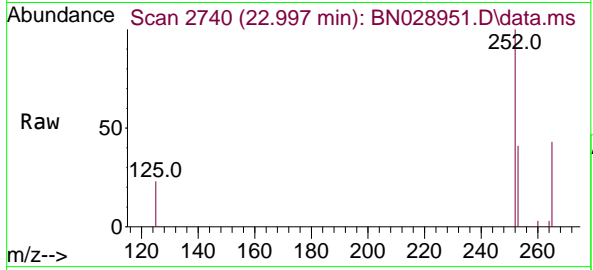


#37  
 Benzo(b)fluoranthene  
 Concen: 0.412 ng  
 RT: 22.997 min Scan# 2750  
 Delta R.T. 0.000 min  
 Lab File: BN028951.D  
 Acq: 01 Dec 2023 17:34

Instrument : BNA\_N  
 ClientSampleId : SSTDCCC0.4

Tgt Ion:252 Resp: 10883

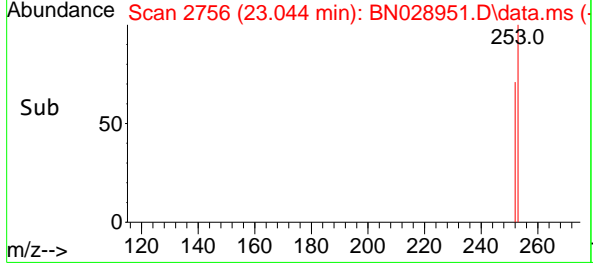
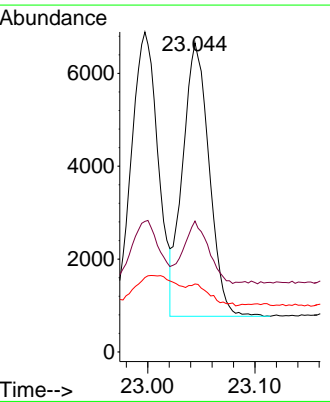
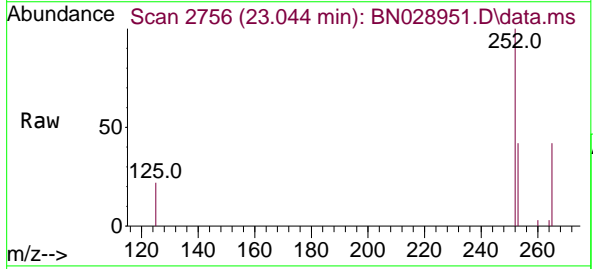
Ion	Ratio	Lower	Upper
252	100		
253	40.8	94.5	141.7#
125	23.2	23.8	35.8#

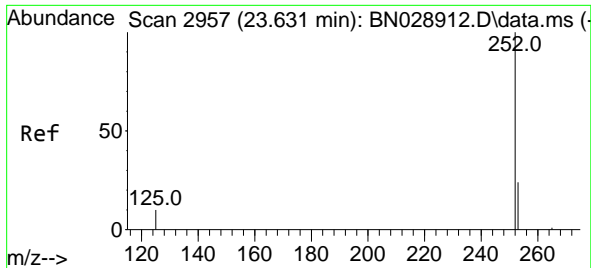


#38  
 Benzo(k)fluoranthene  
 Concen: 0.405 ng  
 RT: 23.044 min Scan# 2756  
 Delta R.T. 0.000 min  
 Lab File: BN028951.D  
 Acq: 01 Dec 2023 17:34

Tgt Ion:252 Resp: 10106

Ion	Ratio	Lower	Upper
252	100		
253	42.4	95.2	142.8#
125	22.0	24.3	36.5#

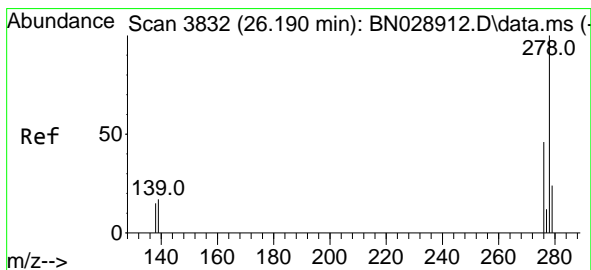
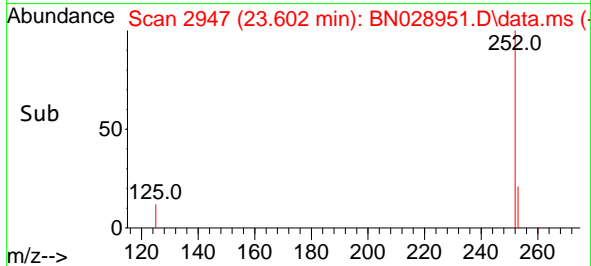
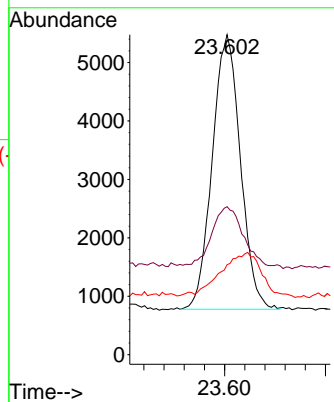
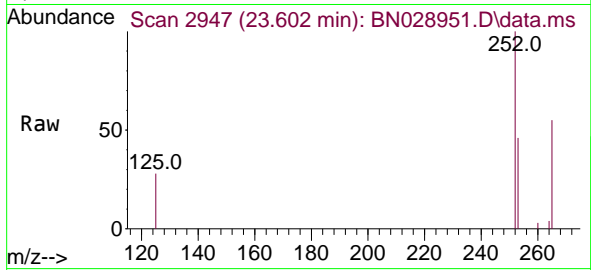




#39  
 Benzo(a)pyrene  
 Concen: 0.386 ng  
 RT: 23.602 min Scan# 2947  
 Delta R.T. 0.000 min  
 Lab File: BN028951.D  
 Acq: 01 Dec 2023 17:34

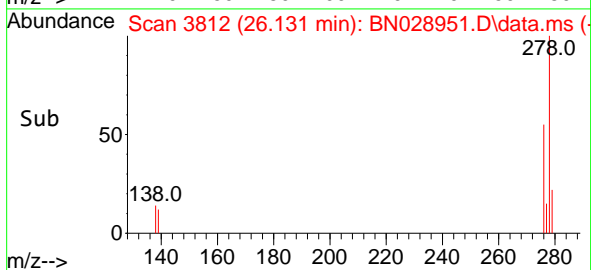
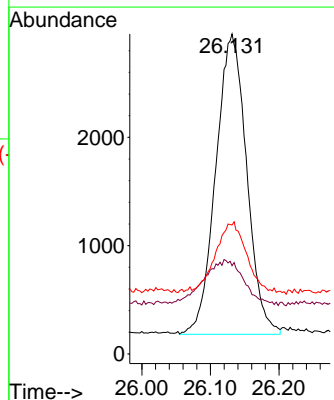
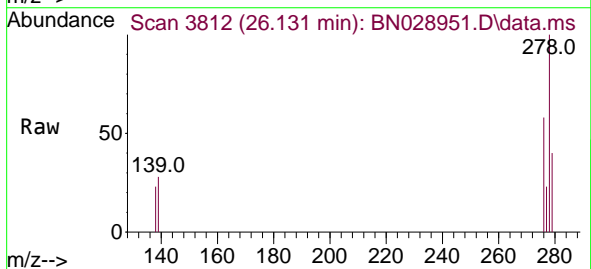
Instrument : BNA\_N  
 ClientSampleId : SSTDCCC0.4

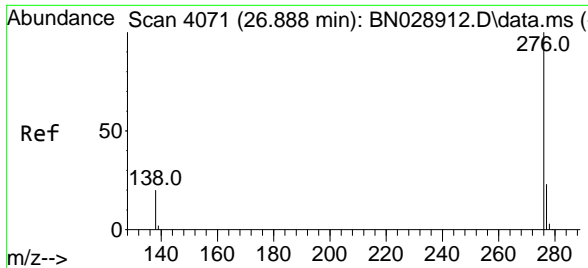
Tgt Ion:252 Resp: 9107  
 Ion Ratio Lower Upper  
 252 100  
 253 46.3 110.2 165.4#  
 125 28.1 27.0 40.4



#40  
 Dibenzo(a,h)anthracene  
 Concen: 0.398 ng  
 RT: 26.131 min Scan# 3812  
 Delta R.T. 0.000 min  
 Lab File: BN028951.D  
 Acq: 01 Dec 2023 17:34

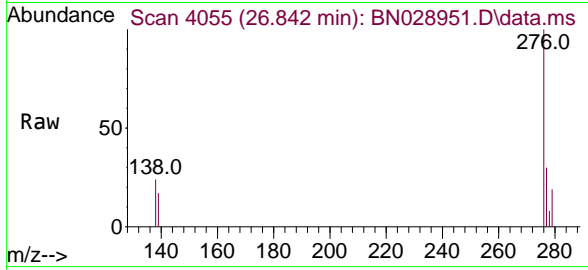
Tgt Ion:278 Resp: 8670  
 Ion Ratio Lower Upper  
 278 100  
 139 27.6 22.6 33.8  
 279 40.3 102.6 153.8#





#41  
 Benzo(g,h,i)perylene  
 Concen: 0.379 ng  
 RT: 26.842 min Scan# 40  
 Delta R.T. 0.000 min  
 Lab File: BN028951.D  
 Acq: 01 Dec 2023 17:34

Instrument : BNA\_N  
 ClientSampleId : SSTDCCC0.4



Tgt Ion: 276 Resp: 9286

Ion	Ratio	Lower	Upper
276	100		
277	30.2	28.9	43.3
138	24.3	36.2	54.2#

