

Data Path : Z:\svoasrv\HPCHEM1\BNA_N\Data\BN120123\
 Data File : BN028975.D
 Acq On : 02 Dec 2023 09:14
 Operator : MA/JU
 Sample : 05403-05
 Misc :
 ALS Vial : 27 Sample Multiplier: 1

Instrument :
 BNA_N
 ClientSampleId :
 RW8-MW01D2-20231111

Quant Time: Dec 03 08:12:18 2023
 Quant Method : Z:\svoasrv\HPCHEM1\BNA_N\Methods\8270-SIM-BN113023.M
 Quant Title : ASP BNA STANDARDS FOR 5 POINT CALIBRATION
 QLast Update : Fri Dec 01 23:11:55 2023
 Response via : Initial Calibration

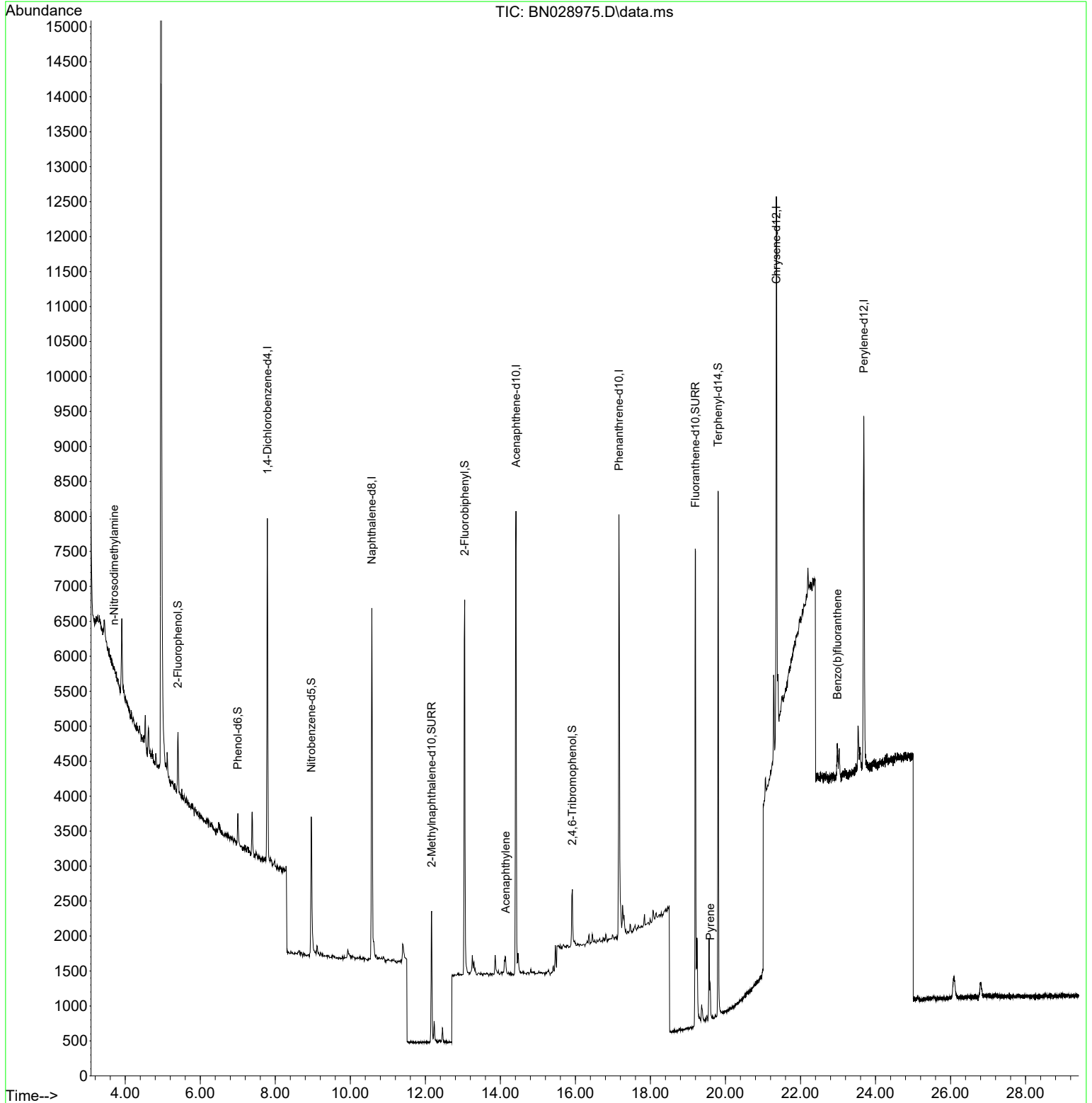
Compound	R.T.	QIon	Response	Conc	Units	Dev(Min)
Internal Standards						
1) 1,4-Dichlorobenzene-d4	7.789	152	2327	0.400	ng	0.00
7) Naphthalene-d8	10.573	136	6778	0.400	ng	-0.01
13) Acenaphthene-d10	14.418	164	4150	0.400	ng	0.00
19) Phenanthrene-d10	17.159	188	9070	0.400	ng	#-0.01
29) Chrysene-d12	21.356	240	7766	0.400	ng	#-0.02
35) Perylene-d12	23.690	264	7269	0.400	ng	#-0.02
System Monitoring Compounds						
4) 2-Fluorophenol	5.406	112	650	0.092	ng	0.00
5) Phenol-d6	7.002	99	446	0.057	ng	0.00
8) Nitrobenzene-d5	8.961	82	1880	0.279	ng	-0.01
11) 2-Methylnaphthalene-d10	12.166	152	2711	0.249	ng	0.00
14) 2,4,6-Tribromophenol	15.918	330	620	0.221	ng	0.00
15) 2-Fluorobiphenyl	13.049	172	4975	0.278	ng	0.00
27) Fluoranthene-d10	19.199	212	8017	0.336	ng	0.00
31) Terphenyl-d14	19.803	244	7766	0.369	ng	-0.01
Target Compounds						
3) n-Nitrosodimethylamine	3.702	42	52	0.106	ng	# 14
16) Acenaphthylene	14.140	152	476	0.022	ng	# 94
30) Pyrene	19.594	202	489	0.102	ng	# 94
34) Bis(2-ethylhexyl)phtha...	21.284	149	1546	Below Cal		# 88
37) Benzo(b)fluoranthene	22.985	252	612	0.021	ng	# 83

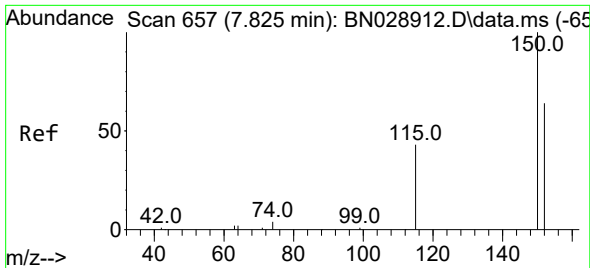
(#) = qualifier out of range (m) = manual integration (+) = signals summed

Data Path : Z:\svoasrv\HPCHEM1\BNA_N\Data\BN120123\
 Data File : BN028975.D
 Acq On : 02 Dec 2023 09:14
 Operator : MA/JU
 Sample : 05403-05
 Misc :
 ALS Vial : 27 Sample Multiplier: 1

Instrument :
 BNA_N
 ClientSampleId :
 RW8-MW01D2-20231111

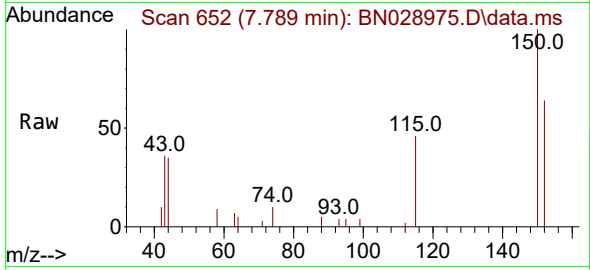
Quant Time: Dec 03 08:12:18 2023
 Quant Method : Z:\svoasrv\HPCHEM1\BNA_N\Methods\8270-SIM-BN113023.M
 Quant Title : ASP BNA STANDARDS FOR 5 POINT CALIBRATION
 QLast Update : Fri Dec 01 23:11:55 2023
 Response via : Initial Calibration



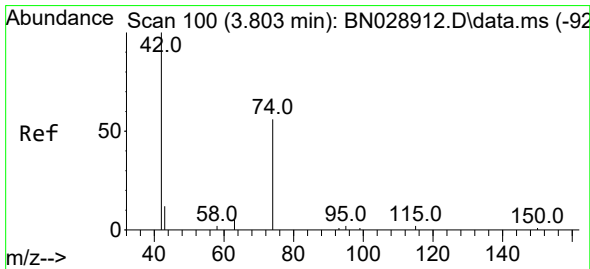
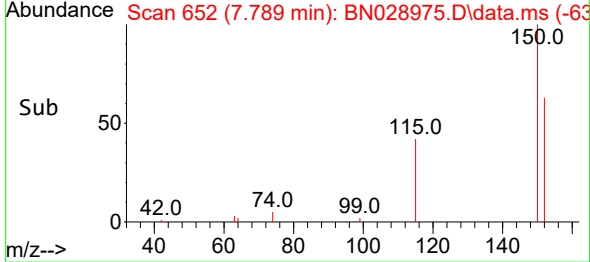
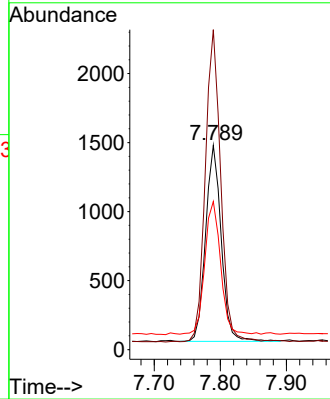


#1
 1,4-Dichlorobenzene-d4
 Concen: 0.400 ng
 RT: 7.789 min Scan# 61
 Delta R.T. -0.008 min
 Lab File: BN028975.D
 Acq: 02 Dec 2023 09:14

Instrument : BNA_N
 ClientSampleId : RW8-MW01D2-20231111

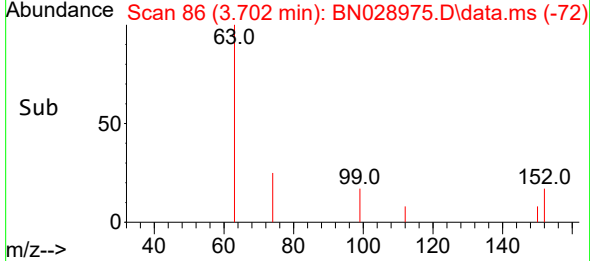
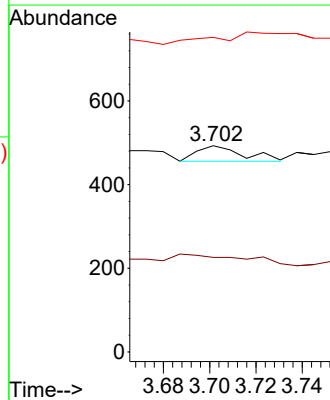
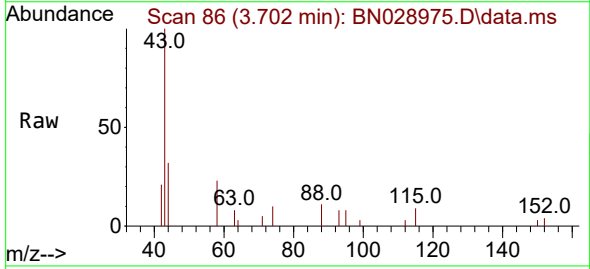


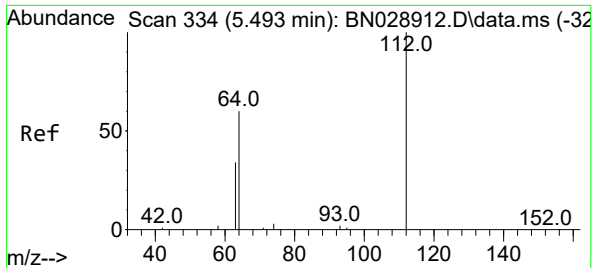
Tgt Ion:152 Resp: 2327
 Ion Ratio Lower Upper
 152 100
 150 156.6 123.4 185.2
 115 72.5 59.1 88.7



#3
 n-Nitrosodimethylamine
 Concen: 0.106 ng
 RT: 3.702 min Scan# 86
 Delta R.T. -0.000 min
 Lab File: BN028975.D
 Acq: 02 Dec 2023 09:14

Tgt Ion: 42 Resp: 52
 Ion Ratio Lower Upper
 42 100
 74 0.0 57.0 85.6#
 44 350.0 0.0 0.0#

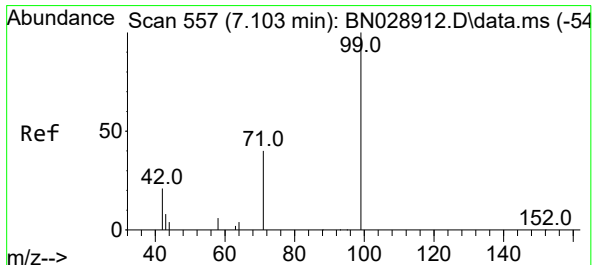
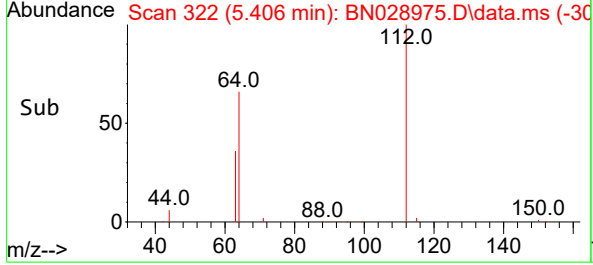
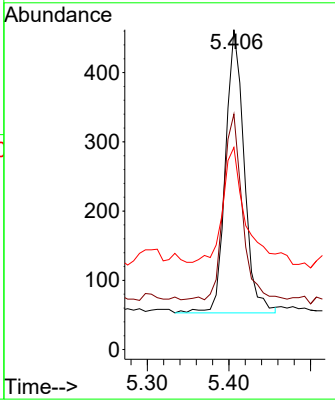
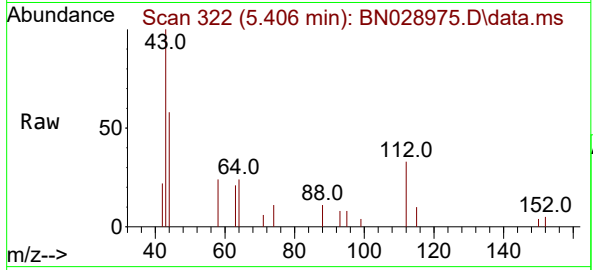




#4
 2-Fluorophenol
 Concen: 0.092 ng
 RT: 5.406 min Scan# 31
 Delta R.T. -0.007 min
 Lab File: BN028975.D
 Acq: 02 Dec 2023 09:14

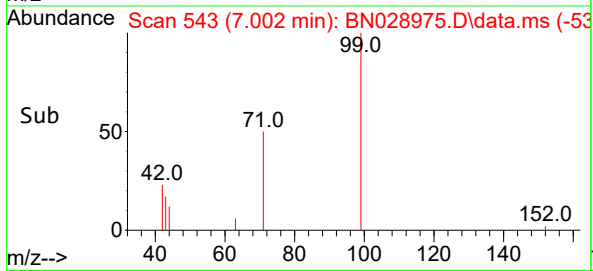
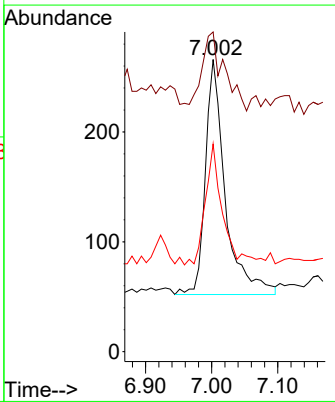
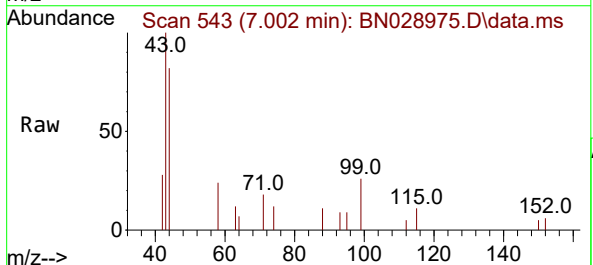
Instrument : BNA_N
 ClientSampleId : RW8-MW01D2-20231111

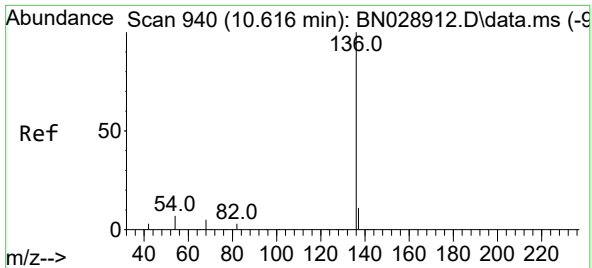
Tgt Ion	Resp	Lower	Upper
112	100		
64	65.4	51.5	77.3
63	51.4	30.4	45.6



#5
 Phenol-d6
 Concen: 0.057 ng
 RT: 7.002 min Scan# 543
 Delta R.T. -0.007 min
 Lab File: BN028975.D
 Acq: 02 Dec 2023 09:14

Tgt Ion	Resp	Lower	Upper
99	100		
42	37.9	21.2	31.8
71	44.2	35.4	53.0

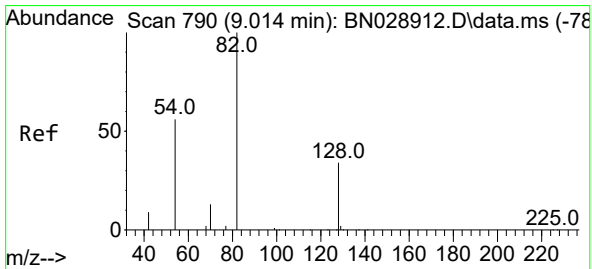
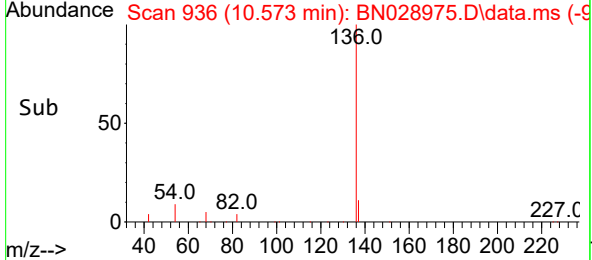
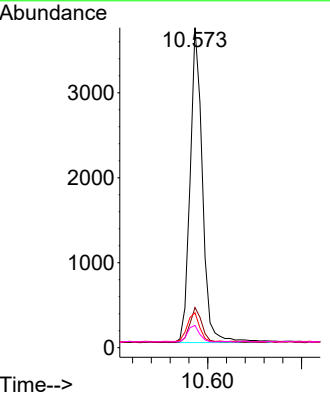
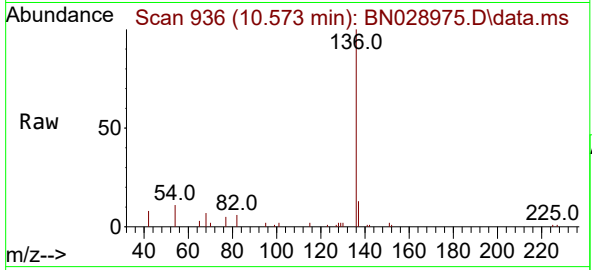




#7
 Naphthalene-d8
 Concen: 0.400 ng
 RT: 10.573 min Scan# 911
 Delta R.T. -0.011 min
 Lab File: BN028975.D
 Acq: 02 Dec 2023 09:14

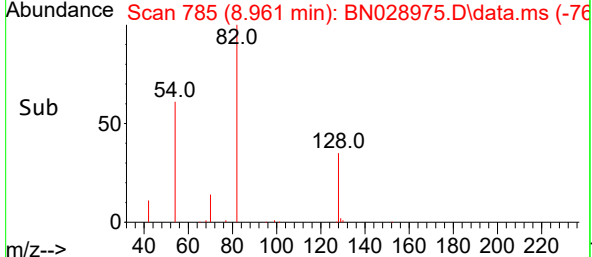
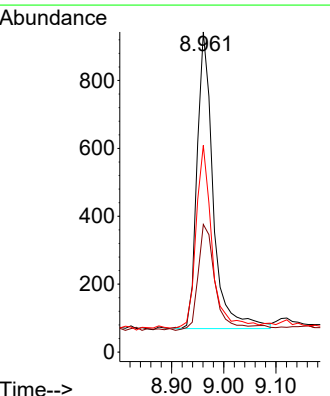
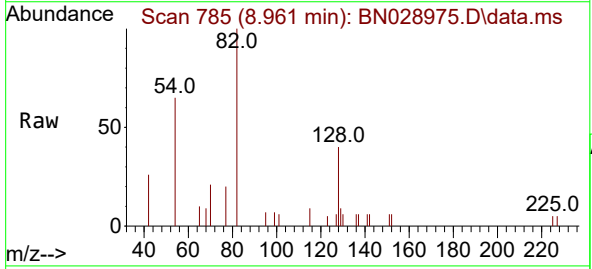
Instrument : BNA_N
 ClientSampleId : RW8-MW01D2-20231111

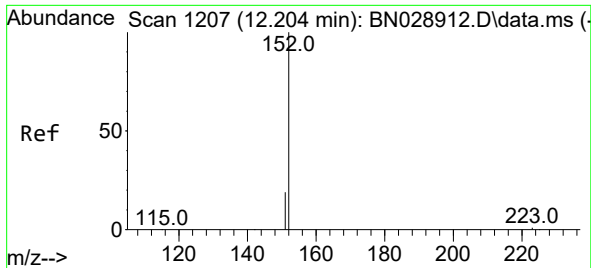
Tgt Ion	Resp	Lower	Upper
136	6778		
136	100		
137	12.5	10.6	16.0
54	10.9	7.5	11.3
68	7.0	5.9	8.9



#8
 Nitrobenzene-d5
 Concen: 0.279 ng
 RT: 8.961 min Scan# 785
 Delta R.T. -0.011 min
 Lab File: BN028975.D
 Acq: 02 Dec 2023 09:14

Tgt Ion	Resp	Lower	Upper
82	1880		
82	100		
128	39.9	29.2	43.8
54	64.6	47.0	70.6

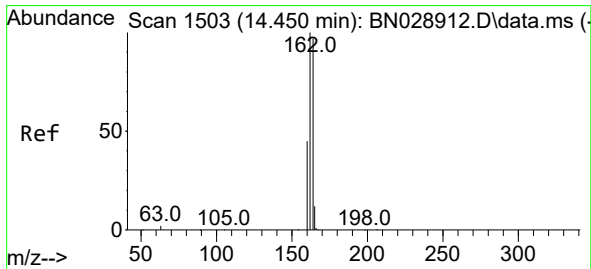
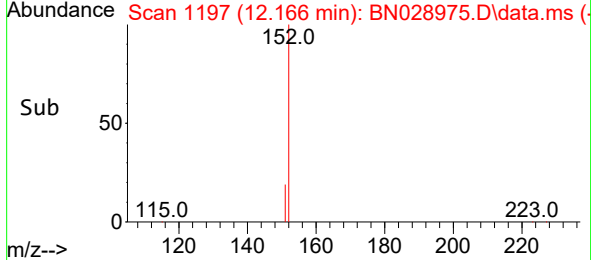
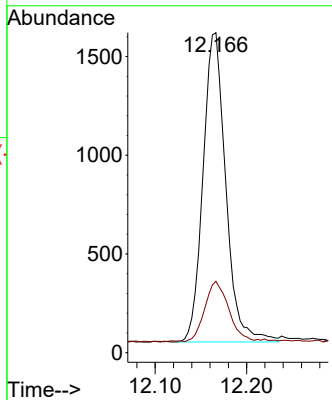
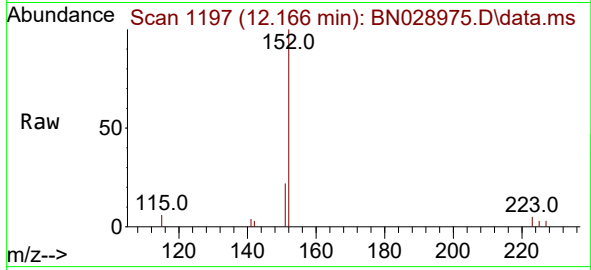




#11
 2-Methylnaphthalene-d10
 Concen: 0.249 ng
 RT: 12.166 min Scan# 1111
 Delta R.T. -0.004 min
 Lab File: BN028975.D
 Acq: 02 Dec 2023 09:14

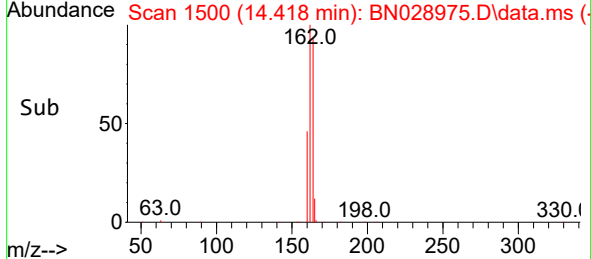
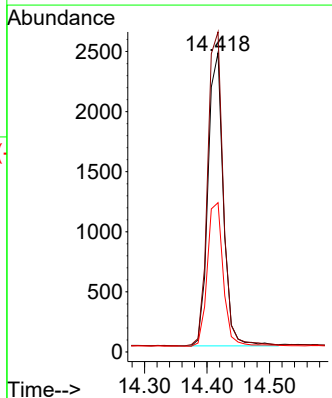
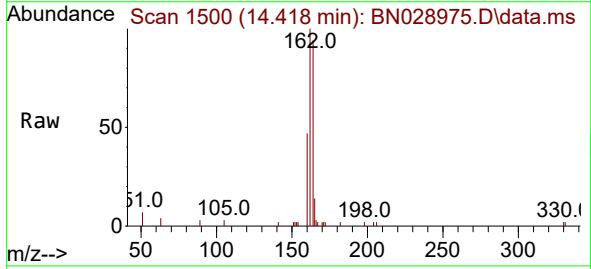
Instrument : BNA_N
 ClientSampleId : RW8-MW01D2-20231111

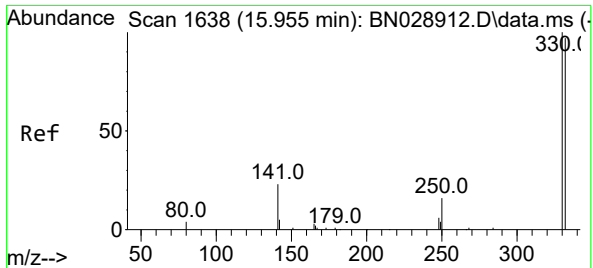
Tgt Ion:152 Resp: 2711
 Ion Ratio Lower Upper
 152 100
 151 20.3 16.7 25.1



#13
 Acenaphthene-d10
 Concen: 0.400 ng
 RT: 14.418 min Scan# 1500
 Delta R.T. -0.000 min
 Lab File: BN028975.D
 Acq: 02 Dec 2023 09:14

Tgt Ion:164 Resp: 4150
 Ion Ratio Lower Upper
 164 100
 162 106.9 81.7 122.5
 160 49.9 37.0 55.6



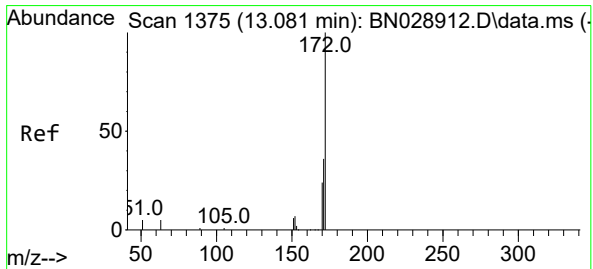
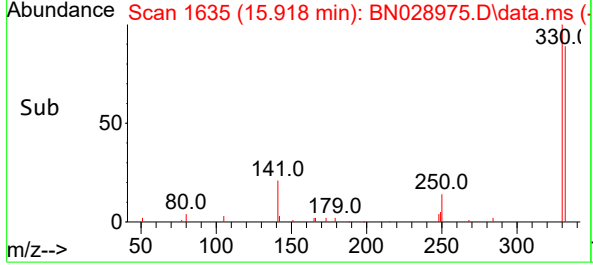
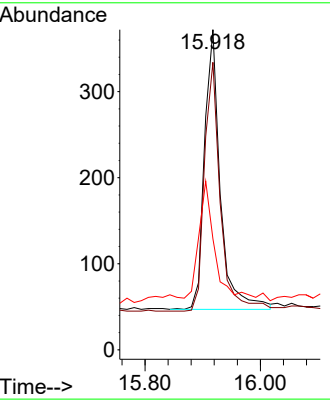
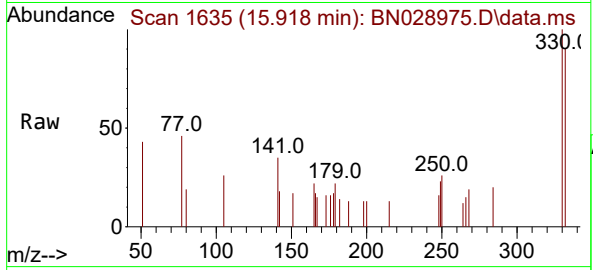


#14
 2,4,6-Tribromophenol
 Concen: 0.221 ng
 RT: 15.918 min Scan# 1635
 Delta R.T. -0.000 min
 Lab File: BN028975.D
 Acq: 02 Dec 2023 09:14

Instrument : BNA_N
 ClientSampleId : RW8-MW01D2-20231111

Tgt Ion: 330 Resp: 620

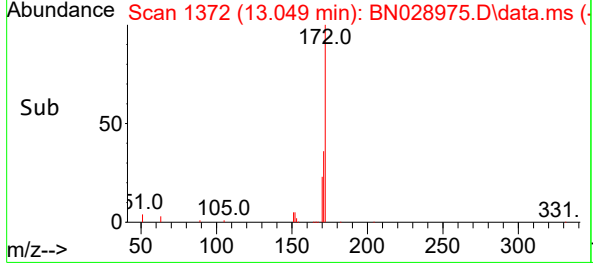
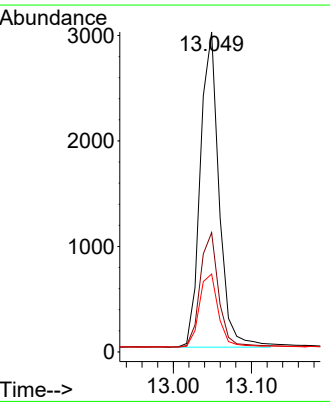
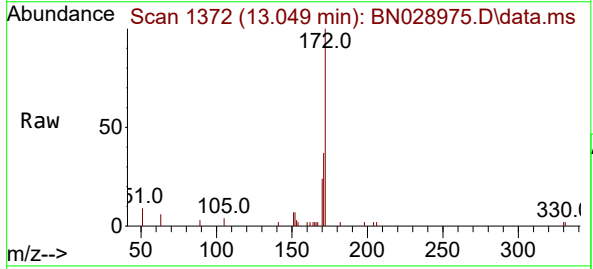
Ion	Ratio	Lower	Upper
330	100		
332	89.2	75.4	113.2
141	44.5	35.7	53.5

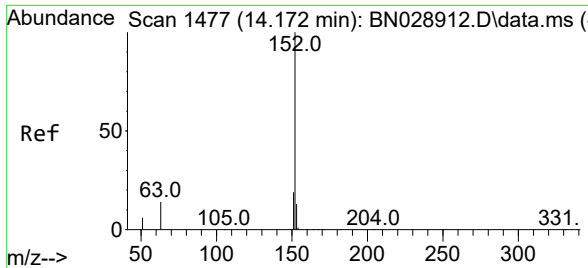


#15
 2-Fluorobiphenyl
 Concen: 0.278 ng
 RT: 13.049 min Scan# 1372
 Delta R.T. -0.000 min
 Lab File: BN028975.D
 Acq: 02 Dec 2023 09:14

Tgt Ion: 172 Resp: 4975

Ion	Ratio	Lower	Upper
172	100		
171	37.3	29.0	43.4
170	24.3	19.7	29.5



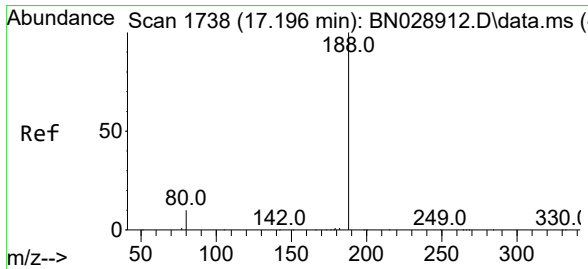
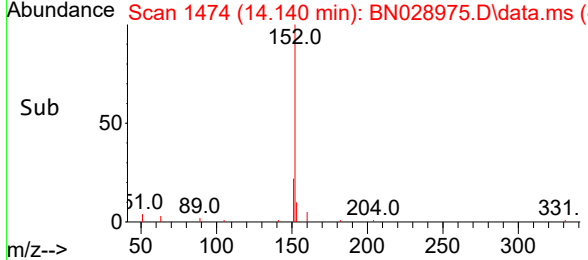
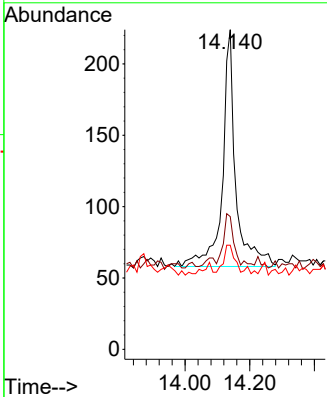
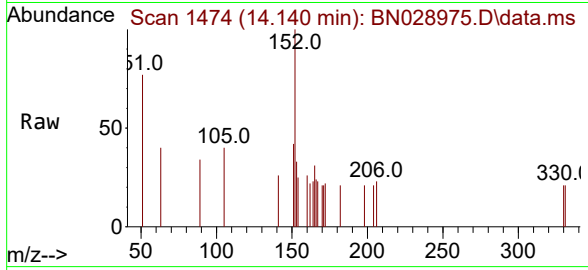


#16
 Acenaphthylene
 Concen: 0.022 ng
 RT: 14.140 min Scan# 14
 Delta R.T. -0.000 min
 Lab File: BN028975.D
 Acq: 02 Dec 2023 09:14

Instrument :
 BNA_N
 ClientSampleId :
 RW8-MW01D2-20231111

Tgt Ion:152 Resp: 476

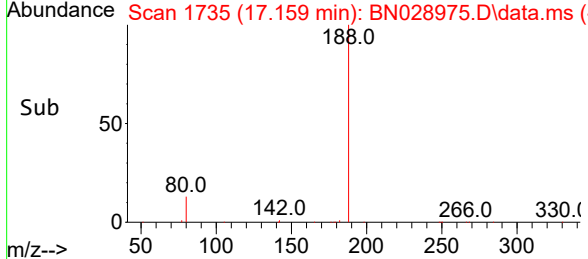
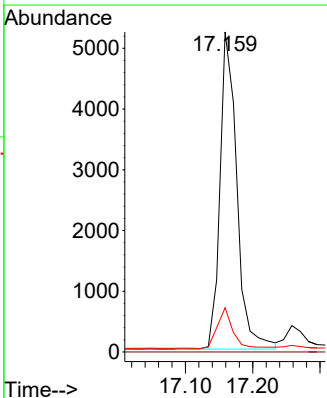
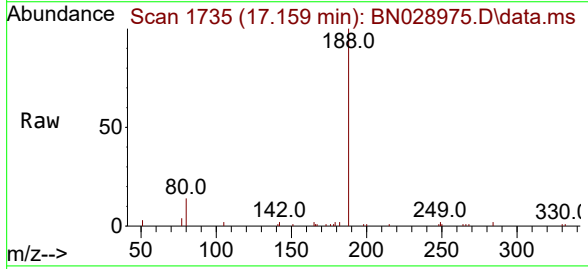
Ion	Ratio	Lower	Upper
152	100		
151	19.1	15.9	23.9
153	8.8	10.8	16.2#

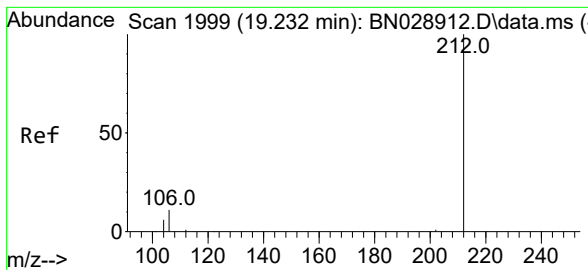


#19
 Phenanthrene-d10
 Concen: 0.400 ng
 RT: 17.159 min Scan# 1735
 Delta R.T. -0.013 min
 Lab File: BN028975.D
 Acq: 02 Dec 2023 09:14

Tgt Ion:188 Resp: 9070

Ion	Ratio	Lower	Upper
188	100		
94	0.0	0.0	0.0
80	13.8	9.0	13.6#



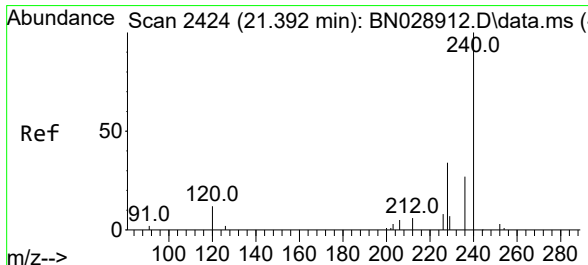
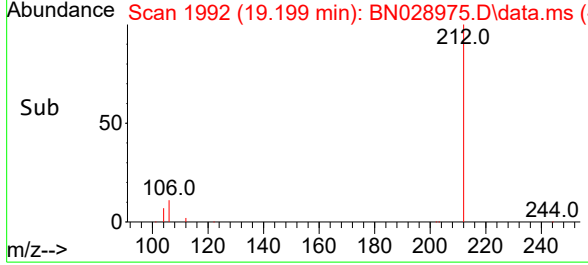
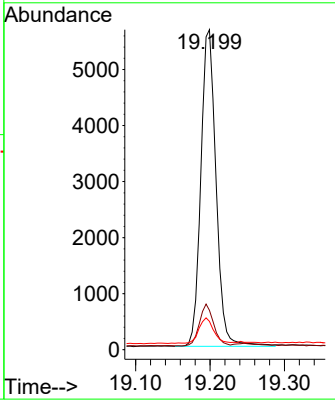
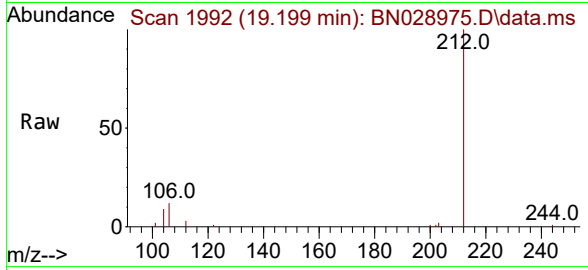


#27
 Fluoranthene-d10
 Concen: 0.336 ng
 RT: 19.199 min Scan# 1919
 Delta R.T. -0.009 min
 Lab File: BN028975.D
 Acq: 02 Dec 2023 09:14

Instrument : BNA_N
 ClientSampleId : RW8-MW01D2-20231111

Tgt Ion:212 Resp: 8017

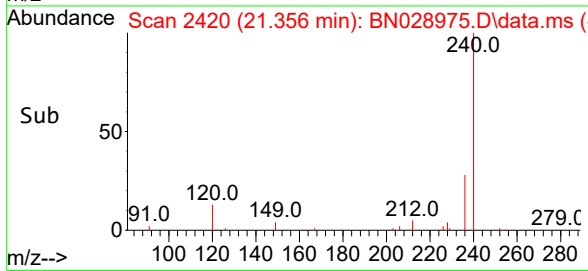
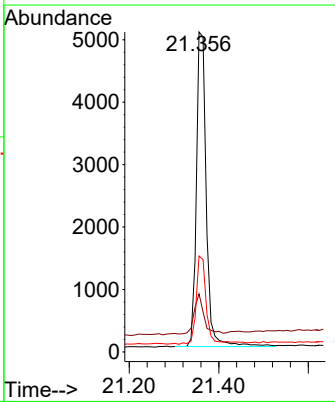
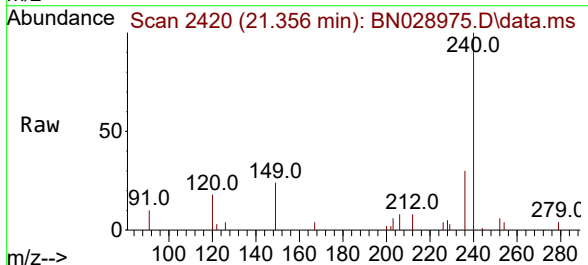
Ion	Ratio	Lower	Upper
212	100		
106	12.4	9.4	14.2
104	7.9	6.2	9.2

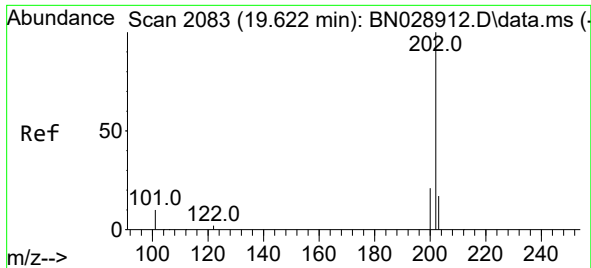


#29
 Chrysene-d12
 Concen: 0.400 ng
 RT: 21.356 min Scan# 2420
 Delta R.T. -0.018 min
 Lab File: BN028975.D
 Acq: 02 Dec 2023 09:14

Tgt Ion:240 Resp: 7766

Ion	Ratio	Lower	Upper
240	100		
120	18.2	37.1	55.7#
236	30.0	32.4	48.6#

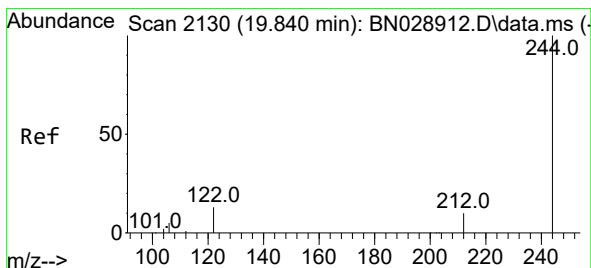
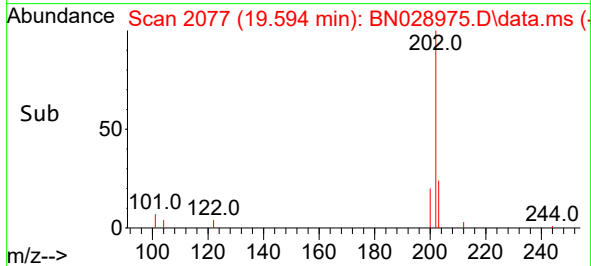
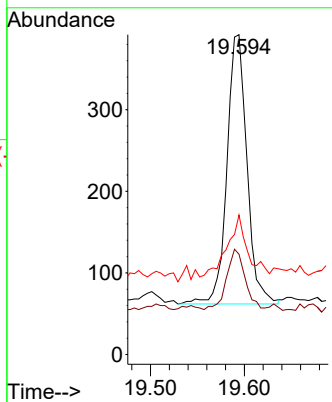
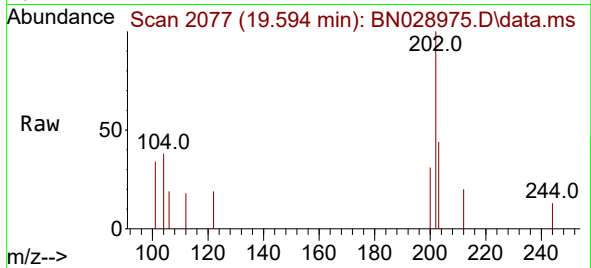




#30
 Pyrene
 Concen: 0.102 ng
 RT: 19.594 min Scan# 2122
 Delta R.T. -0.009 min
 Lab File: BN028975.D
 Acq: 02 Dec 2023 09:14

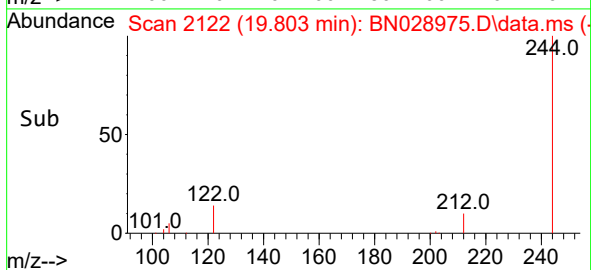
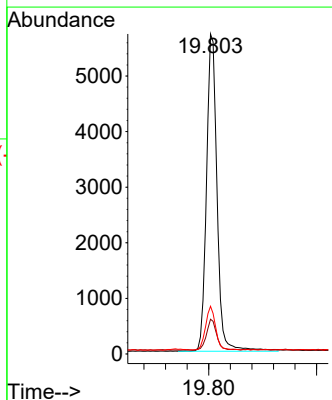
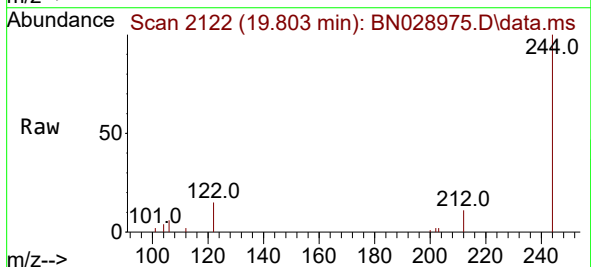
Instrument :
 BNA_N
 ClientSampleId :
 RW8-MW01D2-20231111

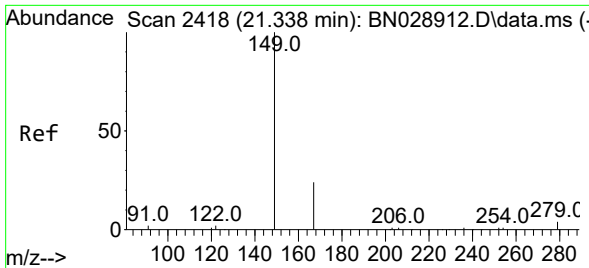
Tgt Ion	Resp	Lower	Upper
202	100		
200	21.9	16.9	25.3
203	23.3	14.8	22.2



#31
 Terphenyl-d14
 Concen: 0.369 ng
 RT: 19.803 min Scan# 2122
 Delta R.T. -0.014 min
 Lab File: BN028975.D
 Acq: 02 Dec 2023 09:14

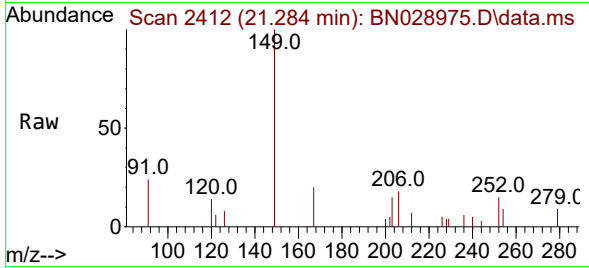
Tgt Ion	Resp	Lower	Upper
244	100		
212	10.9	11.5	17.3
122	14.9	13.2	19.8





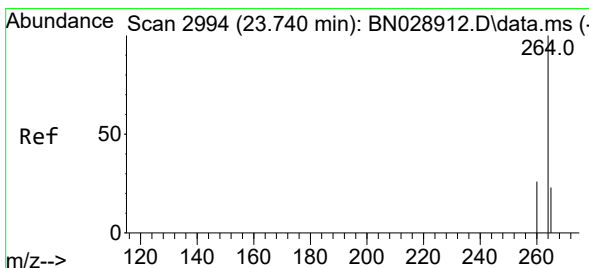
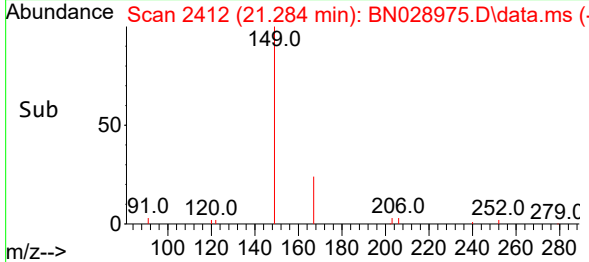
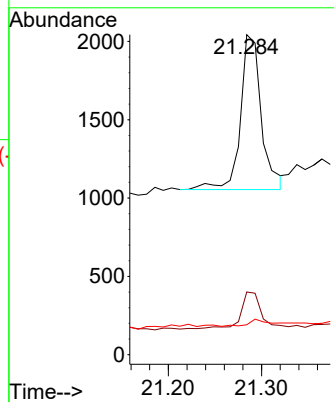
#34
 Bis(2-ethylhexyl)phthalate
 Concen: Below Cal
 RT: 21.284 min Scan# 2412
 Delta R.T. -0.018 min
 Lab File: BN028975.D
 Acq: 02 Dec 2023 09:14

Instrument : BNA_N
 ClientSampleId : RW8-MW01D2-20231111



Tgt Ion:149 Resp: 1546

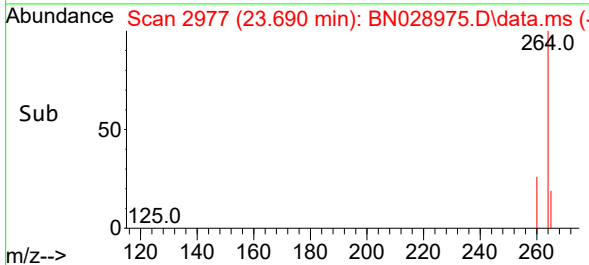
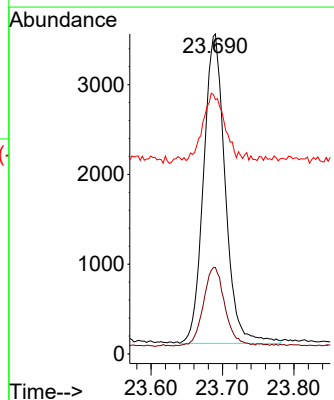
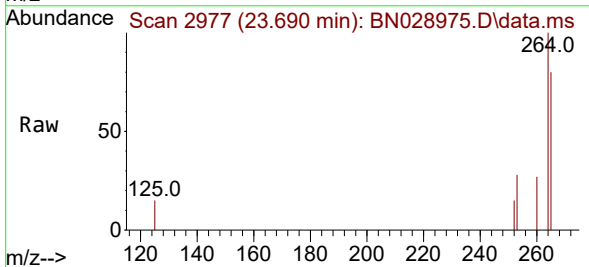
Ion	Ratio	Lower	Upper
149	100		
167	24.3	14.9	22.3#
279	4.8	6.3	9.5#

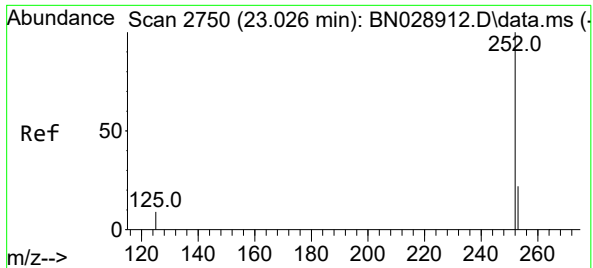


#35
 Perylene-d12
 Concen: 0.400 ng
 RT: 23.690 min Scan# 2977
 Delta R.T. -0.018 min
 Lab File: BN028975.D
 Acq: 02 Dec 2023 09:14

Tgt Ion:264 Resp: 7269

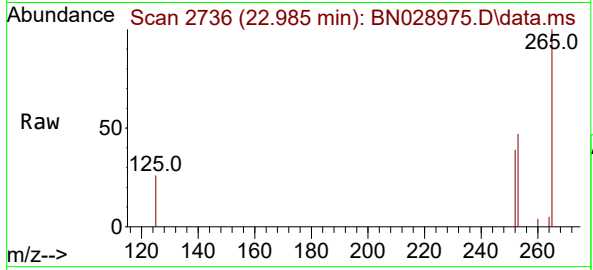
Ion	Ratio	Lower	Upper
264	100		
260	27.0	20.6	30.8
265	79.5	464.5	696.7#





#37
 Benzo(b)fluoranthene
 Concen: 0.021 ng
 RT: 22.985 min Scan# 21
 Delta R.T. -0.012 min
 Lab File: BN028975.D
 Acq: 02 Dec 2023 09:14

Instrument :
 BNA_N
 ClientSampleId :
 RW8-MW01D2-20231111



Tgt Ion:252 Resp: 612

Ion	Ratio	Lower	Upper
252	100		
253	122.8	94.5	141.7
125	67.3	23.8	35.8#

