

Data Path : Z:\svoasrv\HPCHEM1\BNA_N\Data\BN120123\
 Data File : BN028995.D
 Acq On : 02 Dec 2023 22:22
 Operator : MA/JU
 Sample : 05404-15
 Misc :
 ALS Vial : 48 Sample Multiplier: 1

Instrument :
 BNA_N
 ClientSampleId :
 RE134D2-20231109

Quant Time: Dec 03 08:16:44 2023
 Quant Method : Z:\svoasrv\HPCHEM1\BNA_N\Methods\8270-SIM-BN113023.M
 Quant Title : ASP BNA STANDARDS FOR 5 POINT CALIBRATION
 QLast Update : Fri Dec 01 23:11:55 2023
 Response via : Initial Calibration

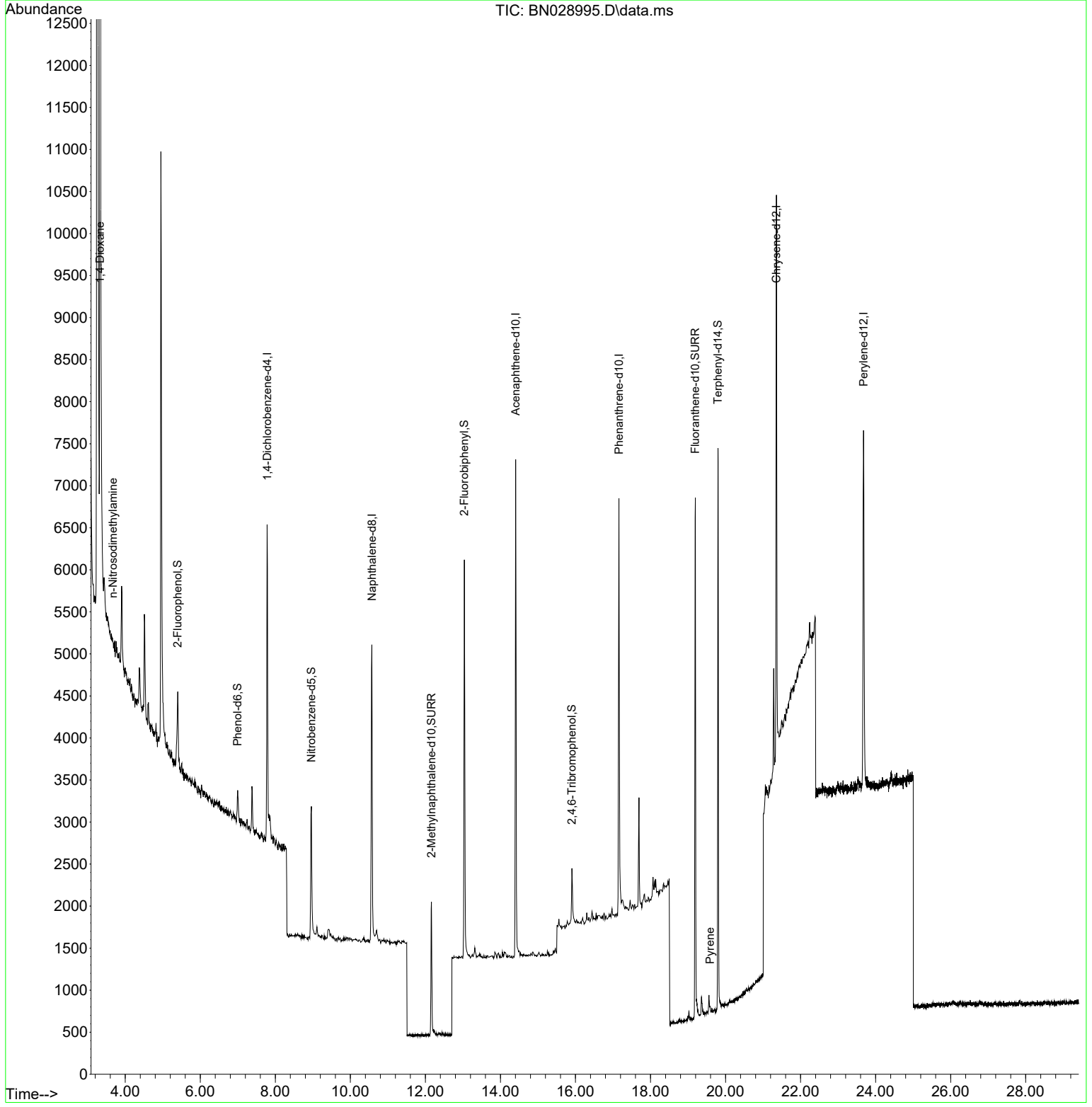
Compound	R.T.	QIon	Response	Conc Units	Dev(Min)	
Internal Standards						
1) 1,4-Dichlorobenzene-d4	7.782	152	1776	0.400 ng	-0.01	
7) Naphthalene-d8	10.573	136	5126	0.400 ng	#-0.01	
13) Acenaphthene-d10	14.407	164	3351	0.400 ng	-0.01	
19) Phenanthrene-d10	17.159	188	7214	0.400 ng	-0.01	
29) Chrysene-d12	21.356	240	6501	0.400 ng	#-0.02	
35) Perylene-d12	23.678	264	6164	0.400 ng	#-0.03	
System Monitoring Compounds						
4) 2-Fluorophenol	5.399	112	579	0.108 ng	-0.01	
5) Phenol-d6	6.995	99	371	0.062 ng	-0.01	
8) Nitrobenzene-d5	8.961	82	1620	0.318 ng	-0.01	
11) 2-Methylnaphthalene-d10	12.159	152	2225	0.270 ng	-0.01	
14) 2,4,6-Tribromophenol	15.905	330	465	0.205 ng	-0.01	
15) 2-Fluorobiphenyl	13.038	172	4102	0.283 ng	-0.01	
27) Fluoranthene-d10	19.195	212	7329	0.386 ng	-0.01	
31) Terphenyl-d14	19.799	244	6874	0.382 ng	-0.02	
Target Compounds						
2) 1,4-Dioxane	3.326	88	11082	6.372 ng		Qvalue 94
3) n-Nitrosodimethylamine	3.673	42	33	0.103 ng	#	14
30) Pyrene	19.589	202	58	0.095 ng	#	89
34) Bis(2-ethylhexyl)phtha...	21.284	149	1325	Below Cal	#	90

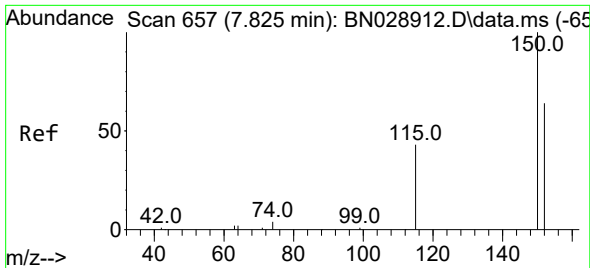
(#) = qualifier out of range (m) = manual integration (+) = signals summed

Data Path : Z:\svoasrv\HPCHEM1\BNA_N\Data\BN120123\
 Data File : BN028995.D
 Acq On : 02 Dec 2023 22:22
 Operator : MA/JU
 Sample : 05404-15
 Misc :
 ALS Vial : 48 Sample Multiplier: 1

Instrument :
 BNA_N
 ClientSampleId :
 RE134D2-20231109

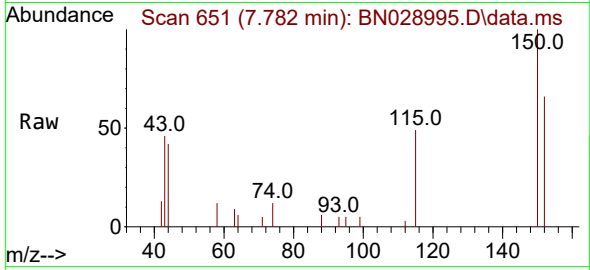
Quant Time: Dec 03 08:16:44 2023
 Quant Method : Z:\svoasrv\HPCHEM1\BNA_N\Methods\8270-SIM-BN113023.M
 Quant Title : ASP BNA STANDARDS FOR 5 POINT CALIBRATION
 QLast Update : Fri Dec 01 23:11:55 2023
 Response via : Initial Calibration



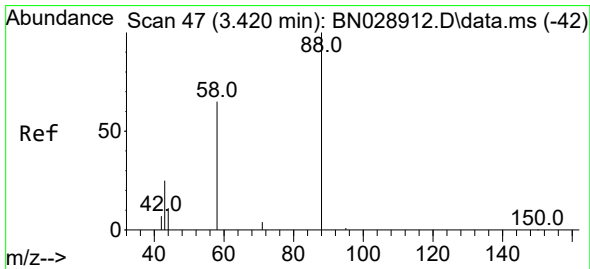
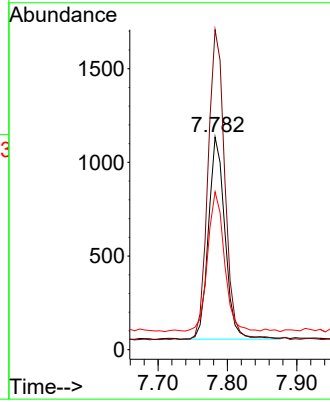
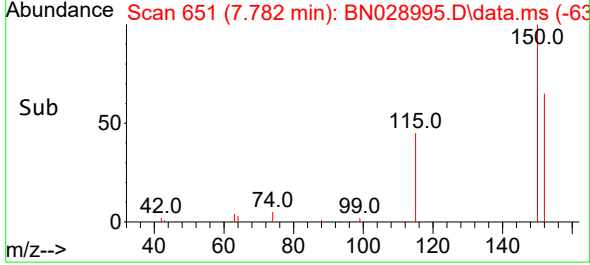


#1
 1,4-Dichlorobenzene-d4
 Concen: 0.400 ng
 RT: 7.782 min Scan# 61
 Delta R.T. -0.015 min
 Lab File: BN028995.D
 Acq: 02 Dec 2023 22:22

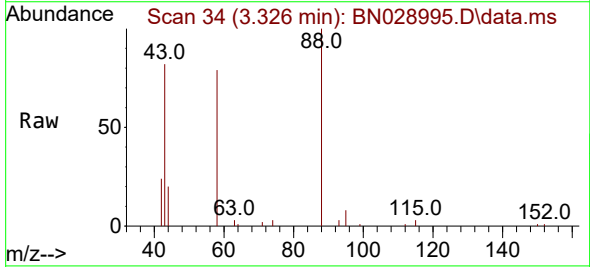
Instrument :
 BNA_N
 ClientSampleId :
 RE134D2-20231109



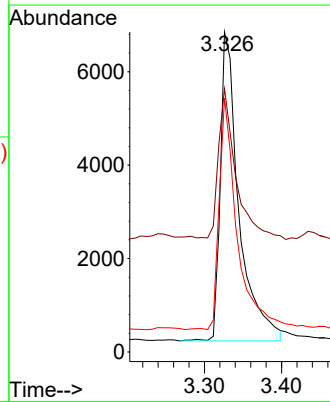
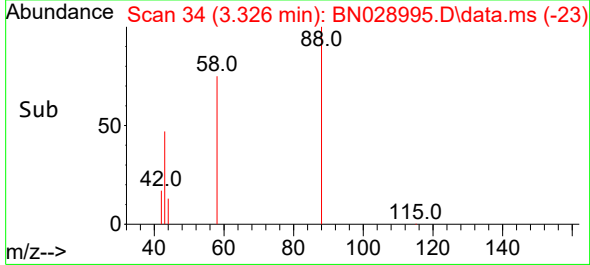
Tgt Ion:152 Resp: 1776
 Ion Ratio Lower Upper
 152 100
 150 150.5 123.4 185.2
 115 74.3 59.1 88.7

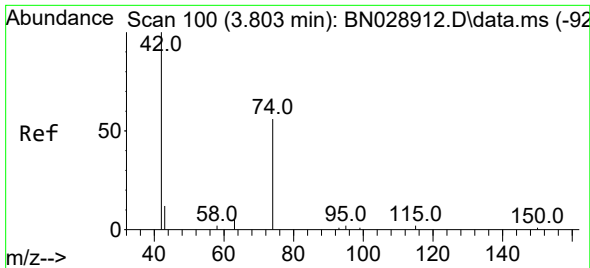


#2
 1,4-Dioxane
 Concen: 6.372 ng
 RT: 3.326 min Scan# 34
 Delta R.T. -0.022 min
 Lab File: BN028995.D
 Acq: 02 Dec 2023 22:22



Tgt Ion: 88 Resp: 11082
 Ion Ratio Lower Upper
 88 100
 43 43.9 29.9 44.9
 58 71.5 55.0 82.4



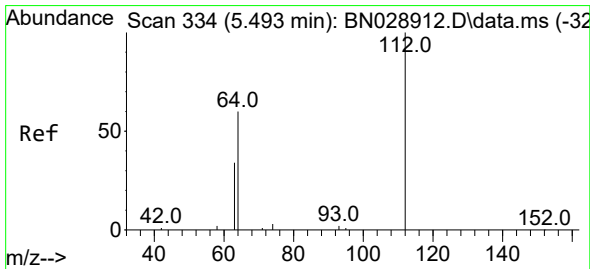
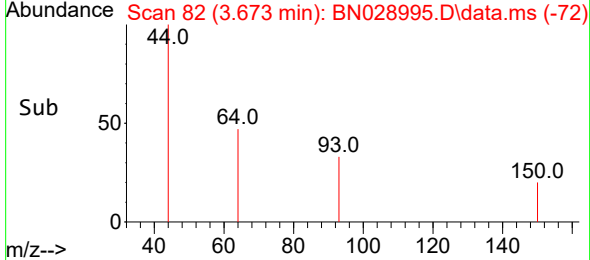
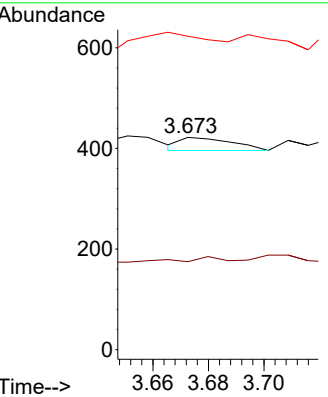
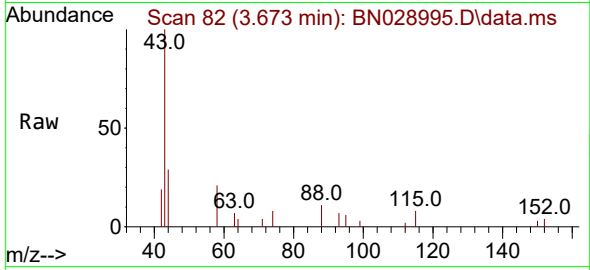


#3
 n-Nitrosodimethylamine
 Concen: 0.103 ng
 RT: 3.673 min Scan# 81
 Delta R.T. -0.029 min
 Lab File: BN028995.D
 Acq: 02 Dec 2023 22:22

Instrument :
 BNA_N
 ClientSampleId :
 RE134D2-20231109

Tgt Ion: 42 Resp: 33

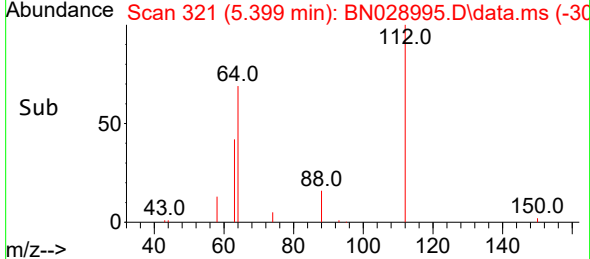
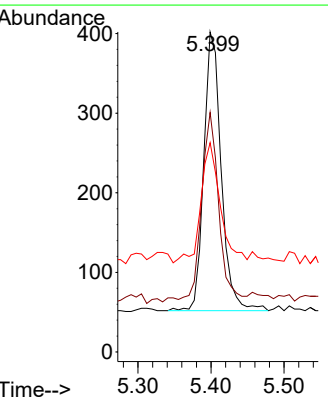
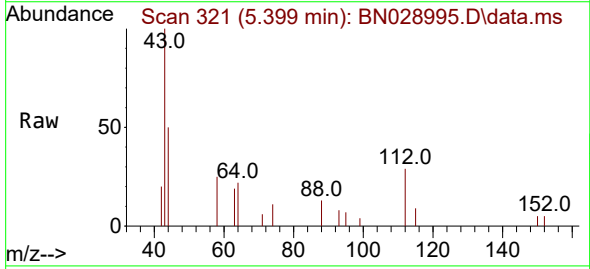
Ion	Ratio	Lower	Upper
42	100		
74	0.0	57.0	85.6#
44	266.7	0.0	0.0#

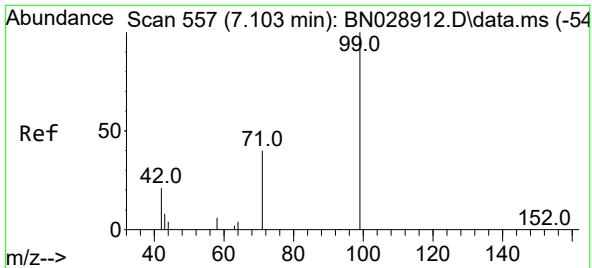


#4
 2-Fluorophenol
 Concen: 0.108 ng
 RT: 5.399 min Scan# 321
 Delta R.T. -0.015 min
 Lab File: BN028995.D
 Acq: 02 Dec 2023 22:22

Tgt Ion: 112 Resp: 579

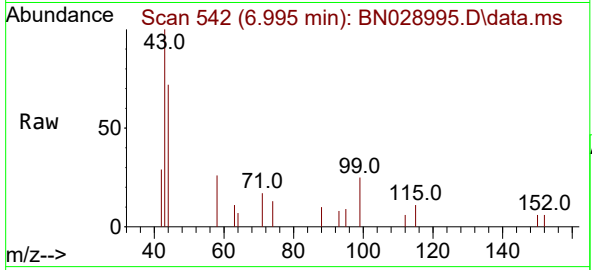
Ion	Ratio	Lower	Upper
112	100		
64	67.5	51.5	77.3
63	47.7	30.4	45.6#





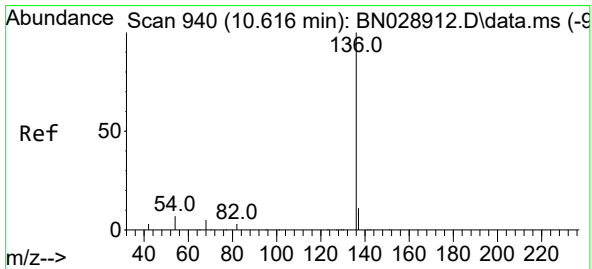
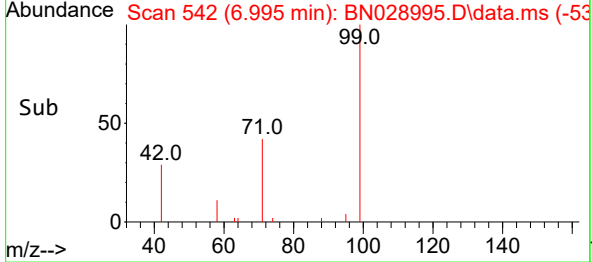
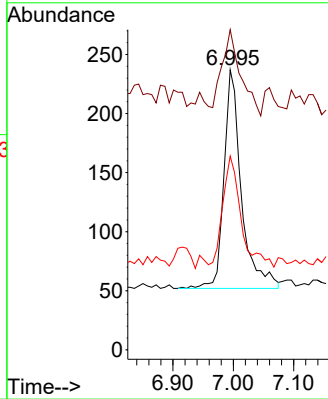
#5
 Phenol-d6
 Concen: 0.062 ng
 RT: 6.995 min Scan# 542
 Delta R.T. -0.015 min
 Lab File: BN028995.D
 Acq: 02 Dec 2023 22:22

Instrument : BNA_N
 ClientSampleId : RE134D2-20231109



Tgt Ion: 99 Resp: 371

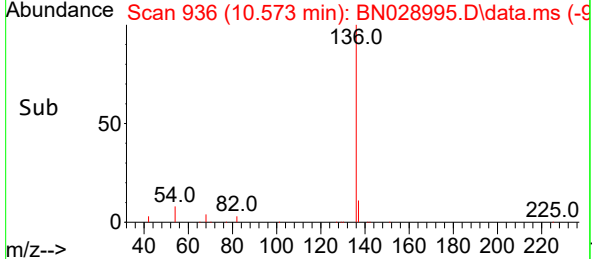
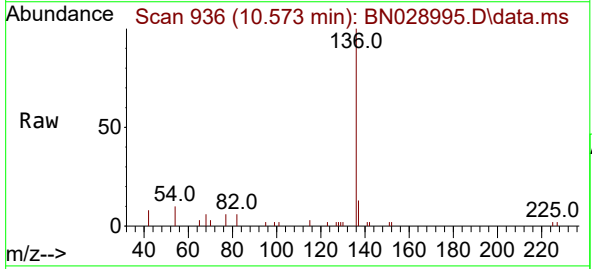
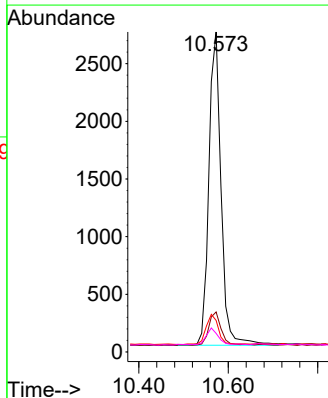
Ion	Ratio	Lower	Upper
99	100		
42	42.6	21.2	31.8#
71	52.8	35.4	53.0

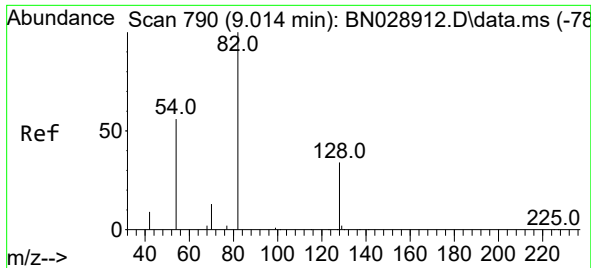


#7
 Naphthalene-d8
 Concen: 0.400 ng
 RT: 10.573 min Scan# 936
 Delta R.T. -0.011 min
 Lab File: BN028995.D
 Acq: 02 Dec 2023 22:22

Tgt Ion: 136 Resp: 5126

Ion	Ratio	Lower	Upper
136	100		
137	12.5	10.6	16.0
54	9.8	7.5	11.3
68	5.8	5.9	8.9#

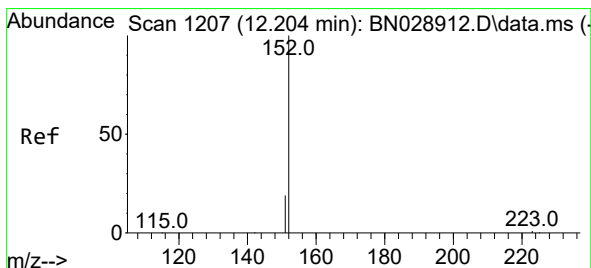
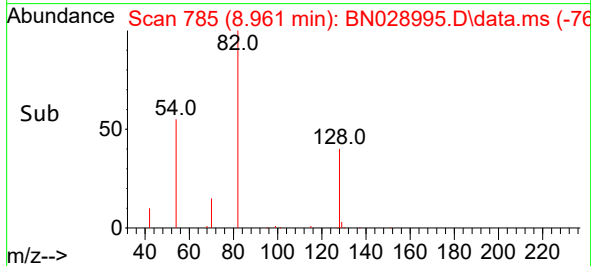
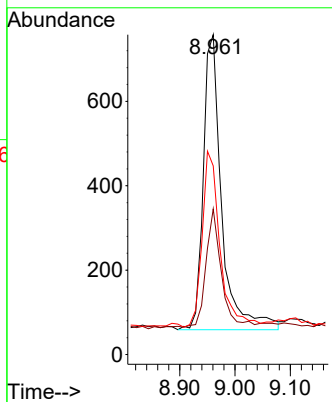
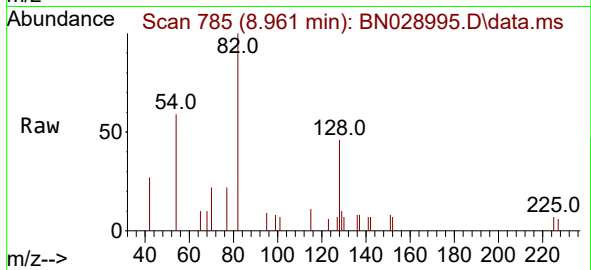




#8
 Nitrobenzene-d5
 Concen: 0.318 ng
 RT: 8.961 min Scan# 71
 Delta R.T. -0.011 min
 Lab File: BN028995.D
 Acq: 02 Dec 2023 22:22

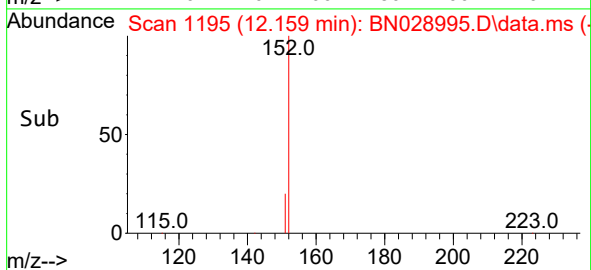
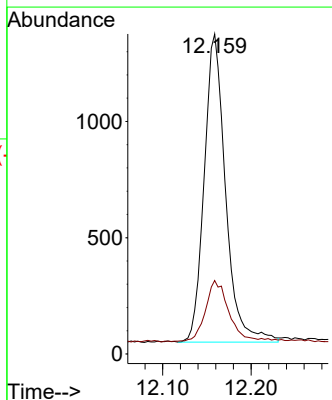
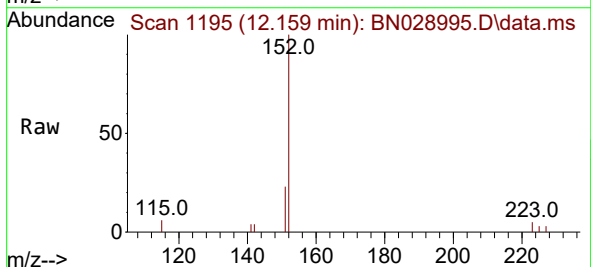
Instrument :
 BNA_N
 ClientSampleId :
 RE134D2-20231109

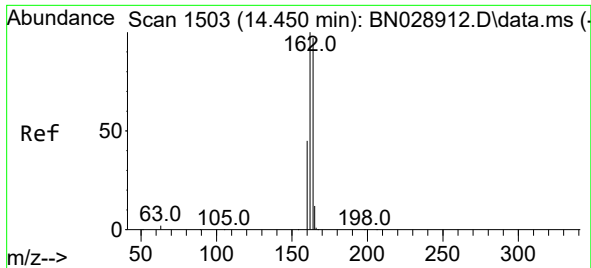
Tgt Ion	Resp	Lower	Upper
82	1620		
128	45.5	29.2	43.8
54	59.0	47.0	70.6



#11
 2-Methylnaphthalene-d10
 Concen: 0.270 ng
 RT: 12.159 min Scan# 1195
 Delta R.T. -0.012 min
 Lab File: BN028995.D
 Acq: 02 Dec 2023 22:22

Tgt Ion	Resp	Lower	Upper
152	2225		
151	21.2	16.7	25.1



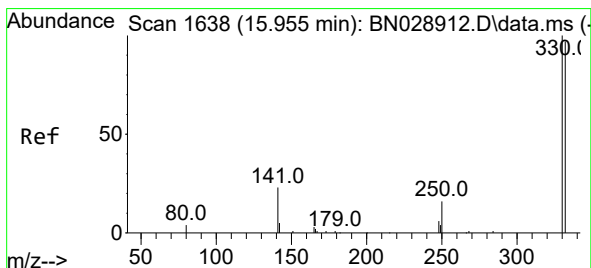
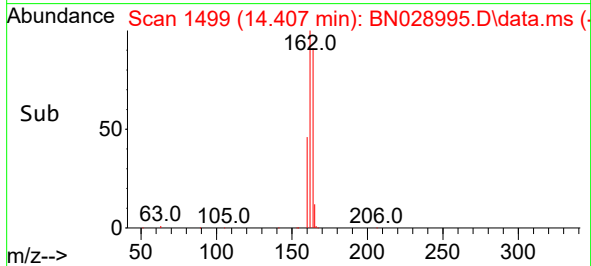
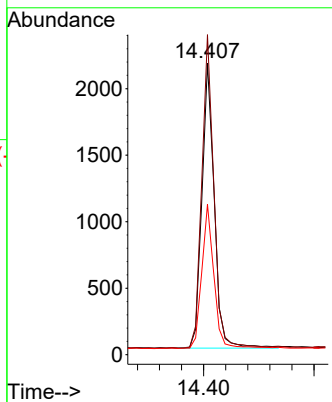
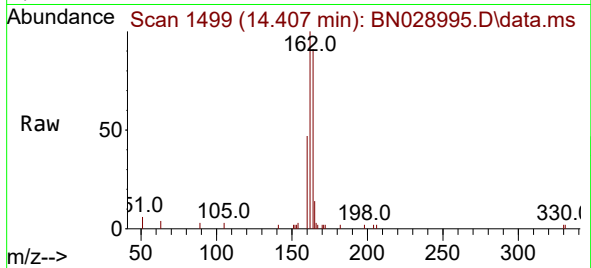


#13
 Acenaphthene-d10
 Concen: 0.400 ng
 RT: 14.407 min Scan# 14
 Delta R.T. -0.011 min
 Lab File: BN028995.D
 Acq: 02 Dec 2023 22:22

Instrument :
 BNA_N
 ClientSampleId :
 RE134D2-20231109

Tgt Ion:164 Resp: 3351

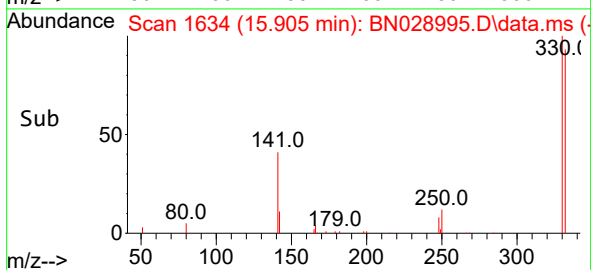
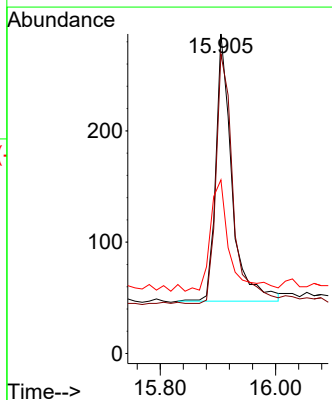
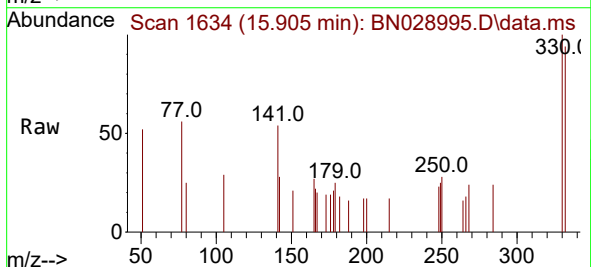
Ion	Ratio	Lower	Upper
164	100		
162	109.8	81.7	122.5
160	51.6	37.0	55.6

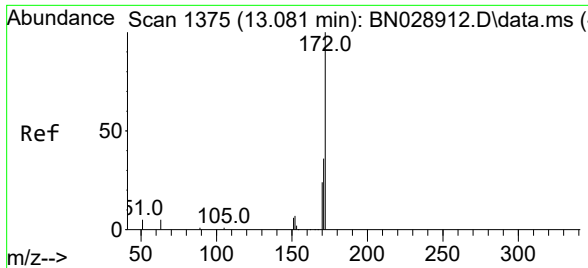


#14
 2,4,6-Tribromophenol
 Concen: 0.205 ng
 RT: 15.905 min Scan# 1634
 Delta R.T. -0.013 min
 Lab File: BN028995.D
 Acq: 02 Dec 2023 22:22

Tgt Ion:330 Resp: 465

Ion	Ratio	Lower	Upper
330	100		
332	100.0	75.4	113.2
141	49.2	35.7	53.5



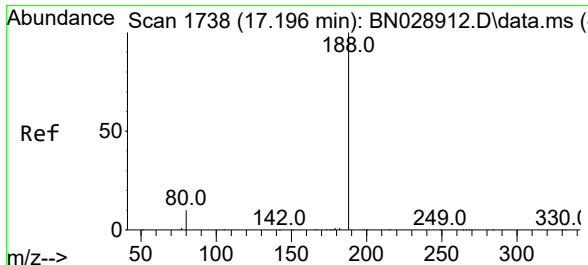
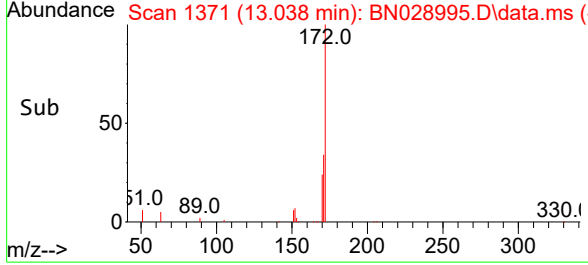
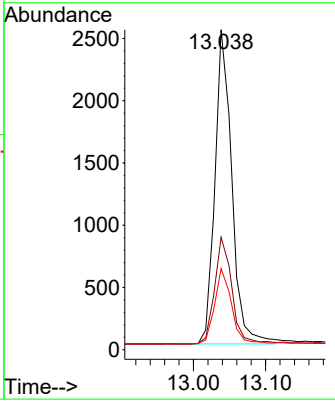
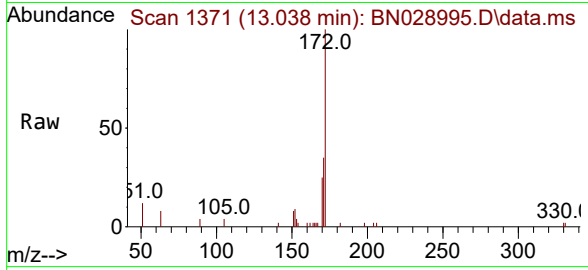


#15
 2-Fluorobiphenyl
 Concen: 0.283 ng
 RT: 13.038 min Scan# 11
 Delta R.T. -0.011 min
 Lab File: BN028995.D
 Acq: 02 Dec 2023 22:22

Instrument : BNA_N
 ClientSampleId : RE134D2-20231109

Tgt Ion:172 Resp: 4102

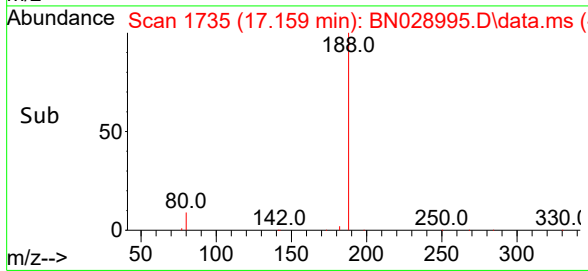
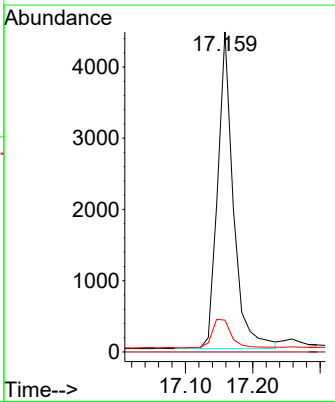
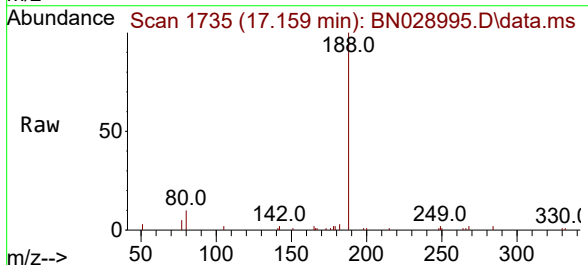
Ion	Ratio	Lower	Upper
172	100		
171	35.1	29.0	43.4
170	25.4	19.7	29.5

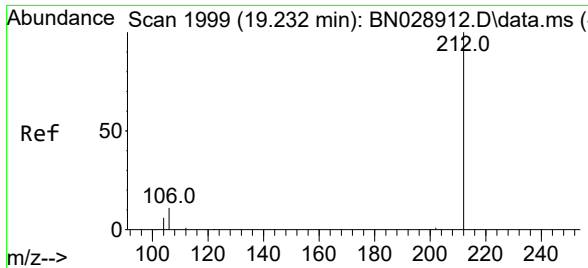


#19
 Phenanthrene-d10
 Concen: 0.400 ng
 RT: 17.159 min Scan# 1735
 Delta R.T. -0.013 min
 Lab File: BN028995.D
 Acq: 02 Dec 2023 22:22

Tgt Ion:188 Resp: 7214

Ion	Ratio	Lower	Upper
188	100		
94	0.0	0.0	0.0
80	9.9	9.0	13.6



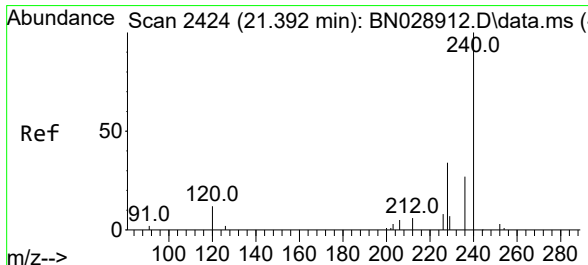
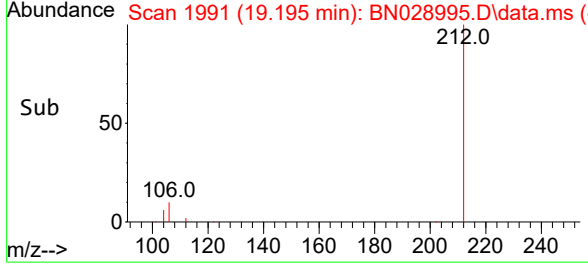
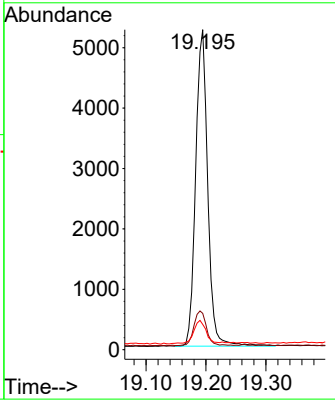
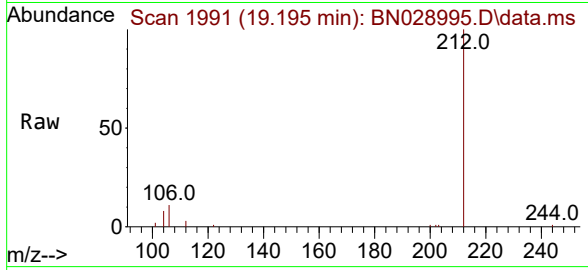


#27
 Fluoranthene-d10
 Concen: 0.386 ng
 RT: 19.195 min Scan# 1991
 Delta R.T. -0.014 min
 Lab File: BN028995.D
 Acq: 02 Dec 2023 22:22

Instrument : BNA_N
 ClientSampleId : RE134D2-20231109

Tgt Ion:212 Resp: 7329

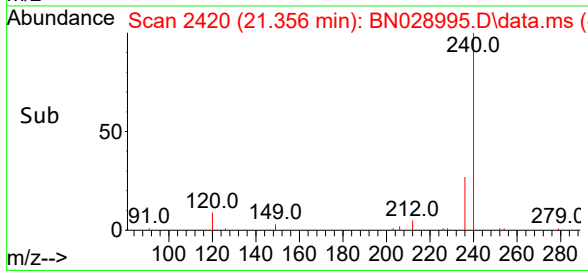
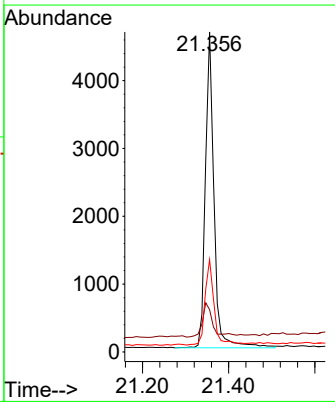
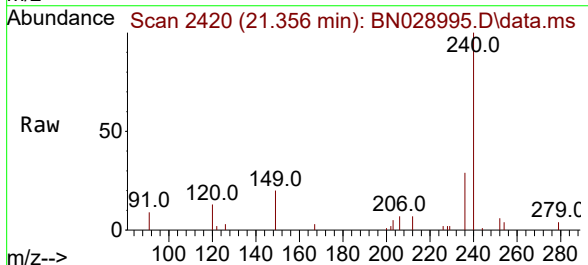
Ion	Ratio	Lower	Upper
212	100		
106	11.4	9.4	14.2
104	7.9	6.2	9.2

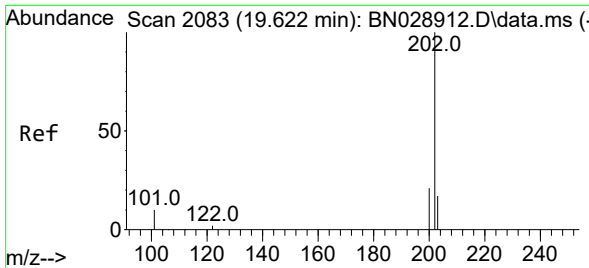


#29
 Chrysene-d12
 Concen: 0.400 ng
 RT: 21.356 min Scan# 2420
 Delta R.T. -0.018 min
 Lab File: BN028995.D
 Acq: 02 Dec 2023 22:22

Tgt Ion:240 Resp: 6501

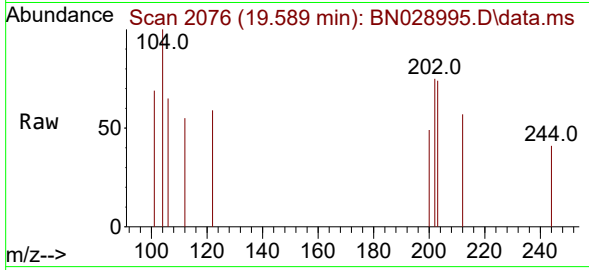
Ion	Ratio	Lower	Upper
240	100		
120	13.2	37.1	55.7#
236	28.9	32.4	48.6#



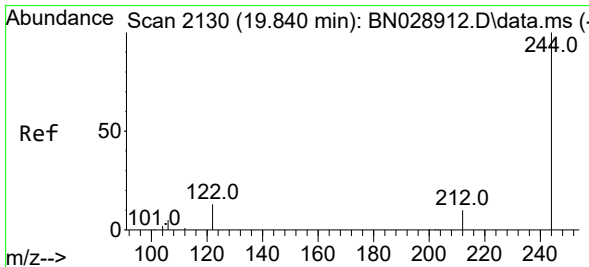
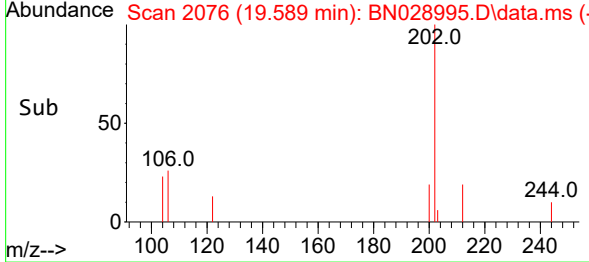
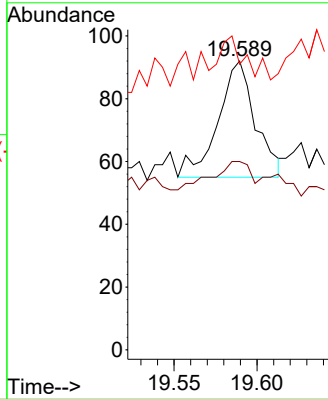


#30
 Pyrene
 Concen: 0.095 ng
 RT: 19.589 min Scan# 20
 Delta R.T. -0.014 min
 Lab File: BN028995.D
 Acq: 02 Dec 2023 22:22

Instrument :
 BNA_N
 ClientSampleId :
 RE134D2-20231109

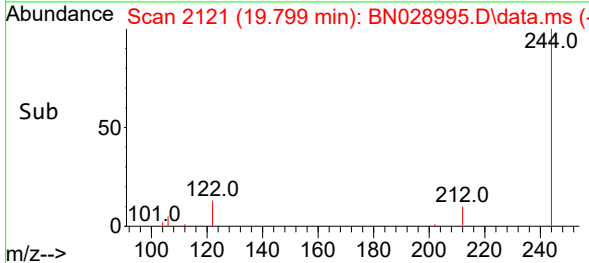
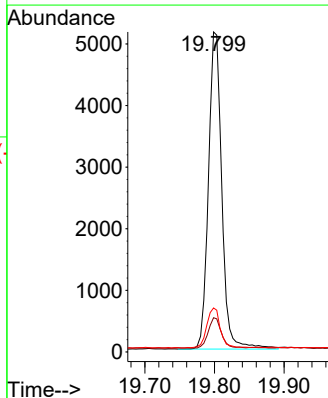
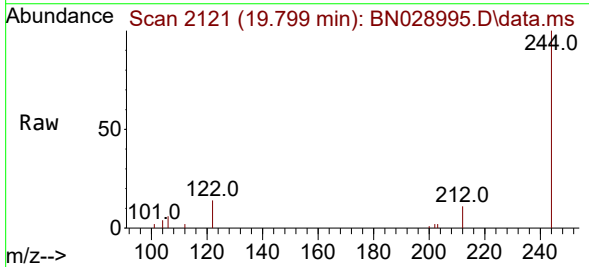


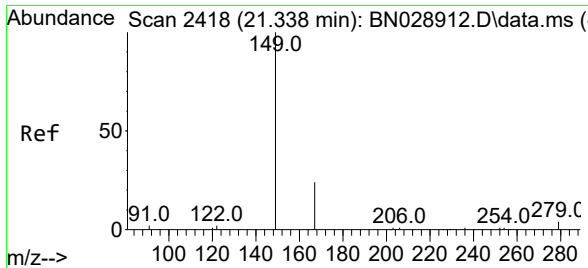
Tgt Ion:202 Resp: 58
 Ion Ratio Lower Upper
 202 100
 200 25.9 16.9 25.3#
 203 24.1 14.8 22.2#



#31
 Terphenyl-d14
 Concen: 0.382 ng
 RT: 19.799 min Scan# 2121
 Delta R.T. -0.019 min
 Lab File: BN028995.D
 Acq: 02 Dec 2023 22:22

Tgt Ion:244 Resp: 6874
 Ion Ratio Lower Upper
 244 100
 212 10.7 11.5 17.3#
 122 13.7 13.2 19.8



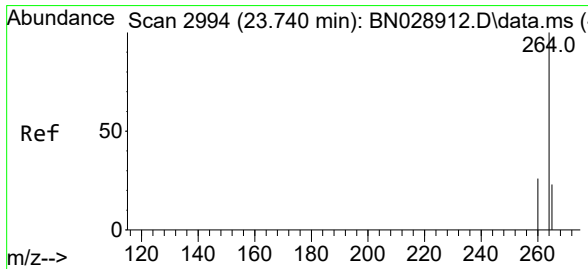
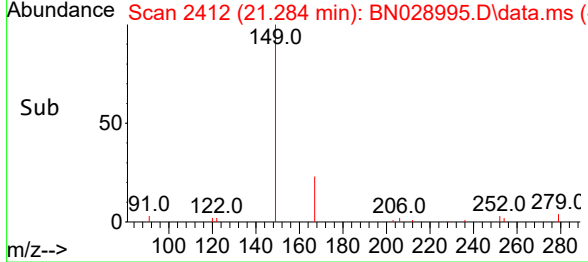
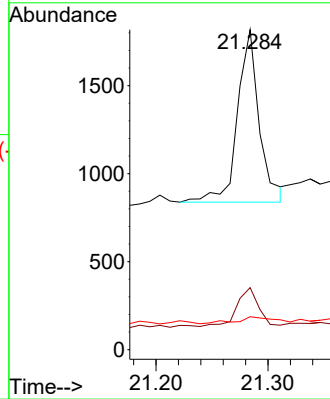
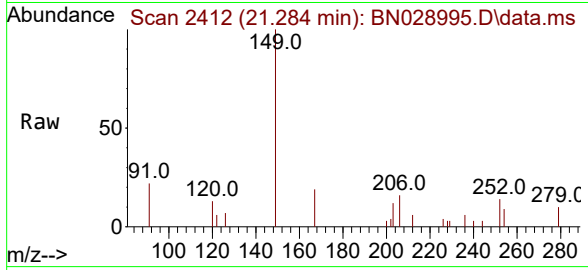


#34
 Bis(2-ethylhexyl)phthalate
 Concen: Below Cal
 RT: 21.284 min Scan# 2412
 Delta R.T. -0.018 min
 Lab File: BN028995.D
 Acq: 02 Dec 2023 22:22

Instrument :
 BNA_N
 ClientSampleId :
 RE134D2-20231109

Tgt Ion:149 Resp: 1325

Ion	Ratio	Lower	Upper
149	100		
167	24.6	14.9	22.3#
279	7.2	6.3	9.5



#35
 Perylene-d12
 Concen: 0.400 ng
 RT: 23.678 min Scan# 2973
 Delta R.T. -0.029 min
 Lab File: BN028995.D
 Acq: 02 Dec 2023 22:22

Tgt Ion:264 Resp: 6164

Ion	Ratio	Lower	Upper
264	100		
260	27.0	20.6	30.8
265	79.0	464.5	696.7#

