

Data Path : Z:\SVOASRV\HPCHEM1\BNA N\DATA\BN120618\
 Data File : BN003750.D
 Acq On : 07 Dec 2018 03:35
 Operator : JU/SJ
 Sample : J6227-11
 Misc :
 ALS Vial : 21 Sample Multiplier: 1

Instrument :
 BNA_N
ClientSampled :
 F9E56

Manual Integrations
APPROVED
 mohammad
 12/10/2018 12:20:55 PM

Quant Time: Dec 07 05:41:03 2018
 Quant Method : Z:\SVOASRV\HPCHEM1\BNA N\METHODS\SOM-EPA-SIM-BN111918.M
 Quant Title : ASP BNA STANDARDS FOR 5 POINT CALIBRATION
 QLast Update : Fri Dec 07 04:08:50 2018
 Response via : Initial Calibration

Internal Standards	R.T.	QIon	Response	Conc	Units	Dev(Min)
1) 1,4-Dichlorobenzene-d4	7.84	152	5564	0.40	ng/ul	0.00
2) Naphthalene-d8	10.63	136	22838	0.40	ng/ul	0.00
6) Acenaphthene-d10	14.47	164	12185	0.40	ng/ul	0.00
10) Phenanthrene-d10	17.21	188	25903m	0.40	ng/ul	0.00
16) Chrysene-d12	21.39	240	20030m	0.40	ng/ul	0.00
20) Perylene-d12	23.70	264	15079m	0.40	ng/ul	0.00
System Monitoring Compounds						
4) 2-Methylnaphthalene-d10	12.22	152	6270	0.18	ng/ul	0.00
14) Fluoranthene-d10	19.24	212	12858m	0.17	ng/ul	0.00
Target Compounds						
					Ovalue	
15) Fluoranthene	19.27	202	2439m	0.024	ng/ul	
17) Pyrene	19.63	202	2257	0.031	ng/ul#	80
21) Benzo(b)fluoranthene	23.00	252	1521m	0.024	ng/ul	

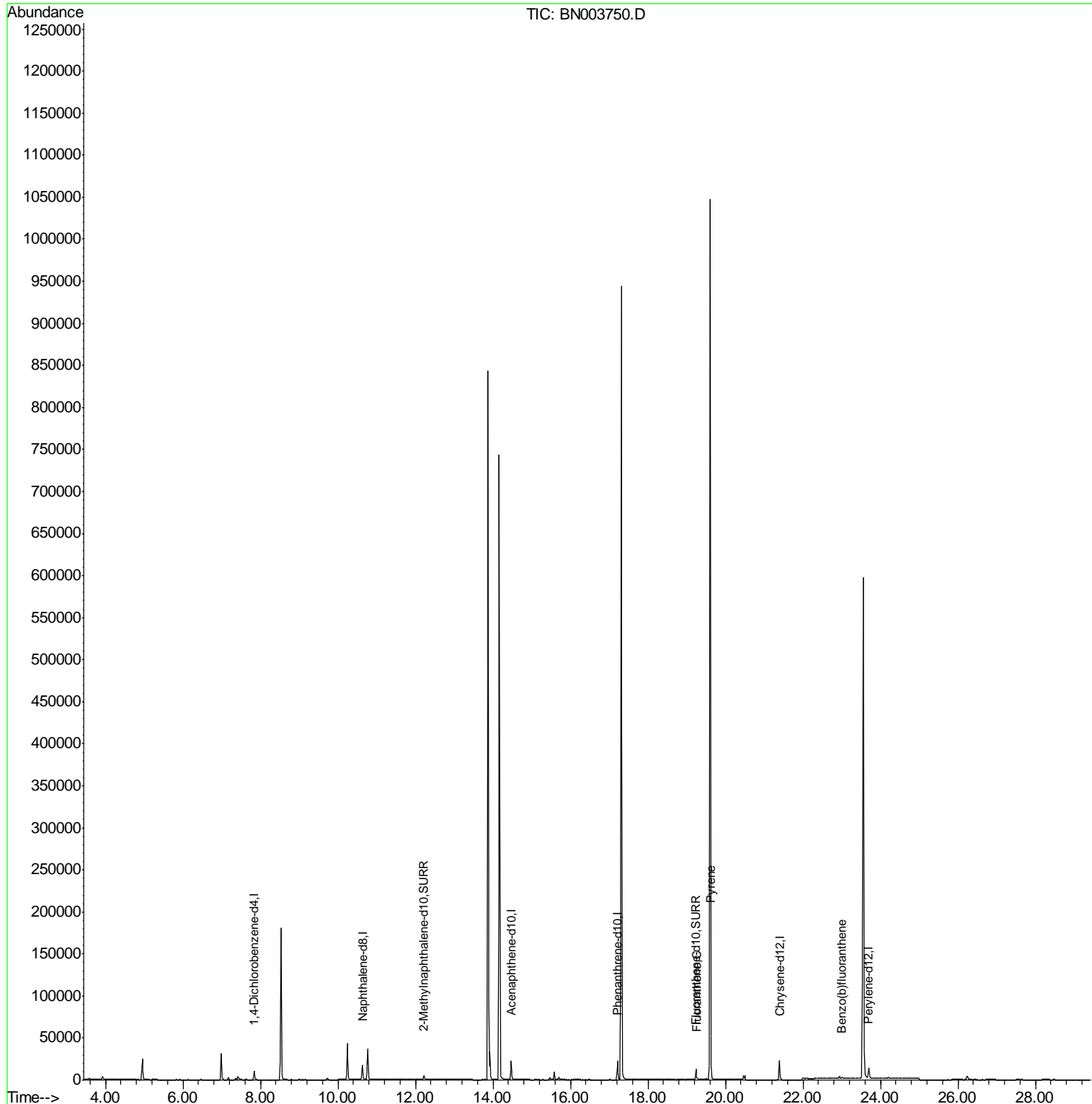
(#) = qualifier out of range (m) = manual integration (+) = signals summed

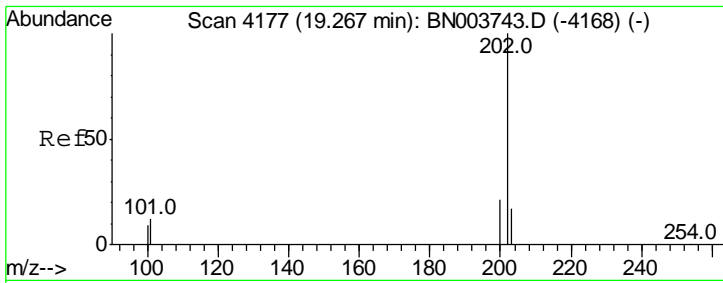
Data Path : Z:\SVOASRV\HPCHEM1\BNA N\DATA\BN120618\
 Data File : BN003750.D
 Acq On : 07 Dec 2018 03:35
 Operator : JU/SJ
 Sample : J6227-11
 Misc :
 ALS Vial : 21 Sample Multiplier: 1

Instrument :
 BNA_N
ClientSampled :
 F9E56

Manual Integrations
APPROVED
 mohammad
 12/10/2018 12:20:55 PM

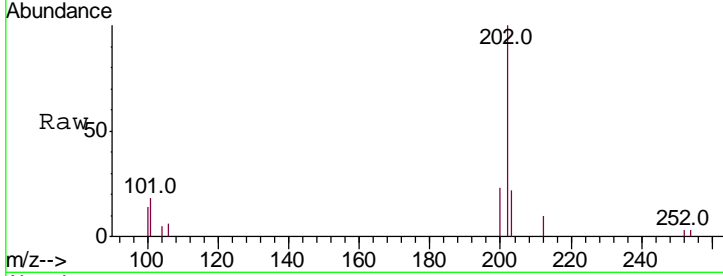
Quant Time: Dec 07 05:41:03 2018
 Quant Method : Z:\SVOASRV\HPCHEM1\BNA N\METHODS\SOM-EPA-SIM-BN11918.M
 Quant Title : ASP BNA STANDARDS FOR 5 POINT CALIBRATION
 QLast Update : Fri Dec 07 04:08:50 2018
 Response via : Initial Calibration





#15
 Fluoranthene
 Concen: 0.024 ng/ul m
 RT: 19.27 min Scan# 4177
 Delta R.T. 0.00 min
 Lab File: BN003750.D
 Acq: 07 Dec 2018 03:35

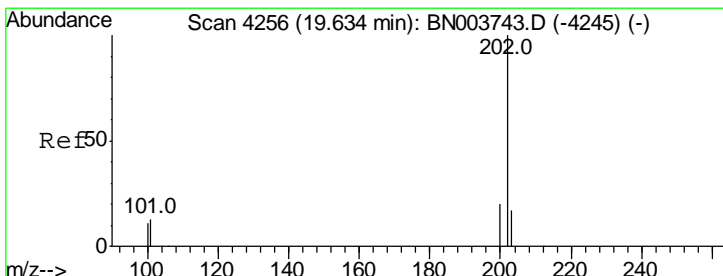
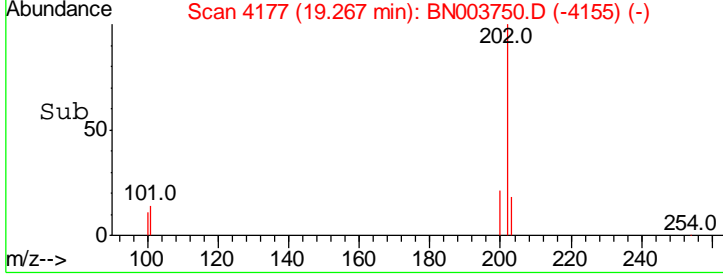
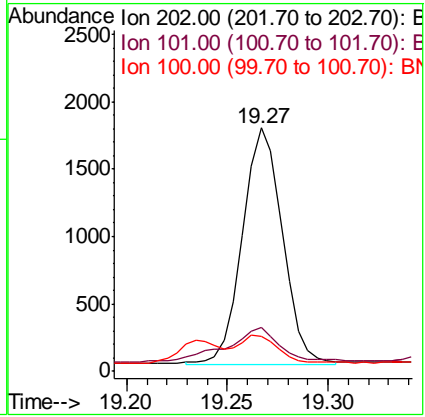
Instrument :
 BNA_N
ClientSampled :
 F9E56



Tgt Ion: 202 Resp: 2439

Ion	Ratio	Lower	Upper
202	100		
101	17.9	0.0	30.7
100	14.3	0.0	28.1

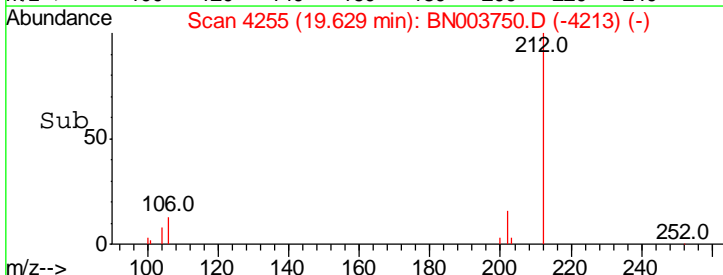
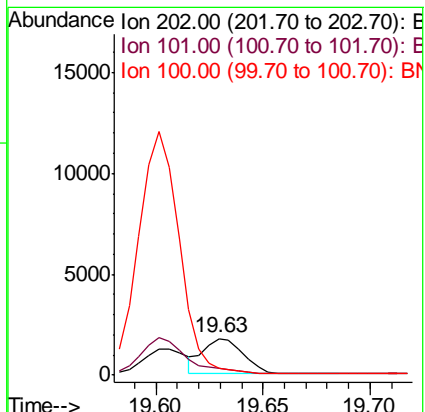
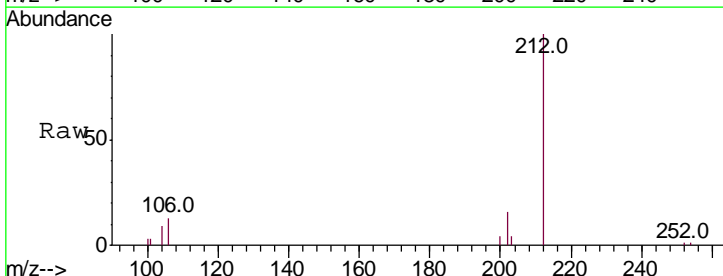
Manual Integrations
APPROVED
 mohammad
 12/10/2018 12:20:55 PM

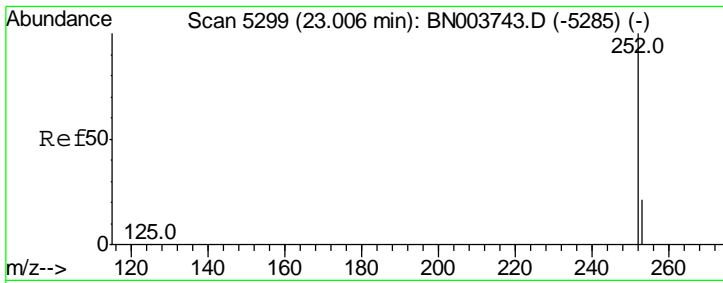


#17
 Pyrene
 Concen: 0.031 ng/ul
 RT: 19.63 min Scan# 4255
 Delta R.T. -0.00 min
 Lab File: BN003750.D
 Acq: 07 Dec 2018 03:35

Tgt Ion: 202 Resp: 2257

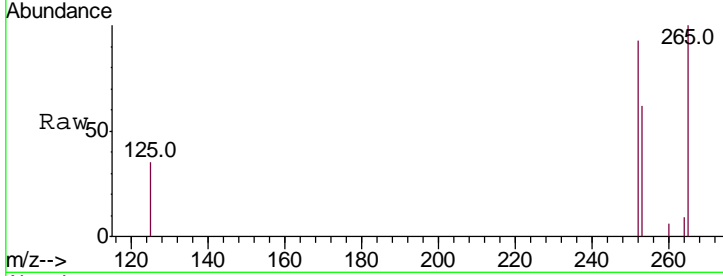
Ion	Ratio	Lower	Upper
202	100		
101	19.2	10.3	15.5#
100	19.9	8.5	12.7#





#21
 Benzo(b)fluoranthene
 Concen: 0.024 ng/ul m
 RT: 23.00 min Scan# 5297
 Delta R.T. -0.01 min
 Lab File: BN003750.D
 Acq: 07 Dec 2018 03:35

Instrument :
 BNA_N
ClientSampled :
 F9E56



Tot Ion: 252 Resp: 1521

Ion	Ratio	Lower	Upper
252	100		
253	66.4	0.0	46.0#
125	37.2	0.0	22.4#

Manual Integrations
APPROVED
 mohammad
 12/10/2018 12:20:55 PM

