

Data Path : Z:\SVOASRV\HPCHEM1\BNA N\DATA\BN120720\  
 Data File : BN013014.D  
 Acq On : 09 Dec 2020 16:06  
 Operator : CG/JU  
 Sample : L4862-10DL 5X  
 Misc :  
 ALS Vial : 84 Sample Multiplier: 1

Instrument :  
 BNA\_N  
 ClientSampleId :  
 C0BB5DL

Manual Integrations  
 APPROVED

mohammad  
 12/9/2020 10:01:24 PM

Quant Time: Dec 09 16:43:12 2020  
 Quant Method : Z:\SVOASRV\HPCHEM1\BNA N\METHODS\SOM-EPA-SIM-BN120320.M  
 Quant Title : ASP BNA STANDARDS FOR 5 POINT CALIBRATION  
 QLast Update : Wed Dec 09 07:33:34 2020  
 Response via : Initial Calibration

Internal Standards	R.T.	QIon	Response	Conc	Units	Dev(Min)
1) 1,4-Dichlorobenzene-d4	7.38	152	1515	0.40	ng/ul	0.00
2) Naphthalene-d8	10.15	136	6299	0.40	ng/ul	0.00
6) Acenaphthene-d10	14.05	164	3507	0.40	ng/ul	0.00
10) Phenanthrene-d10	16.81	188	7169	0.40	ng/ul	0.00
16) Chrysene-d12	21.03	240	4443	0.40	ng/ul	0.00
20) Perylene-d12	23.13	264	4524	0.40	ng/ul	0.00
System Monitoring Compounds						
4) 2-Methylnaphthalene-d10	11.75	152	324	0.03	ng/ul	-0.01
14) Fluoranthene-d10	18.85	212	592	0.03	ng/ul	0.00
Target Compounds						
						Ovalue
3) Naphthalene	10.19	128	5519	0.303	ng/ul	93
5) 2-Methylnaphthalene	11.82	142	4275	0.357	ng/ul	98
7) Acenaphthylene	13.76	152	9512	0.573	ng/ul	96
8) Acenaphthene	14.11	153	5920	0.435	ng/ul	99
9) Fluorene	15.11	166	7028	0.450	ng/ul	99
11) Pentachlorophenol	16.48	266	44	0.021	ng/ul	92
12) Phenanthrene	16.85	178	290910	12.103	ng/ul	96
13) Anthracene	16.94	178	73532	3.595	ng/ul	94
15) Fluoranthene	18.88	202	404958	14.177	ng/ul	99
17) Pyrene	19.25	202	322812	15.382	ng/ul	96
18) Benzo(a)anthracene	21.02	228	177212	9.640	ng/ul	98
19) Chrysene	21.07	228	146427	7.210	ng/ul	97
21) Benzo(b)fluoranthene	22.52	252	149275m	7.132	ng/ul	
22) Benzo(k)fluoranthene	22.56	252	59515m	2.573	ng/ul	
23) Benzo(a)pyrene	23.05	252	101959	5.250	ng/ul#	85
24) Indeno(1,2,3-cd)pyrene	25.19	276	55135	2.161	ng/ul#	98
25) Dibenzo(a,h)anthracene	25.20	278	17085	0.847	ng/ul#	96
26) Benzo(g,h,i)perylene	25.82	276	49895	2.162	ng/ul	97

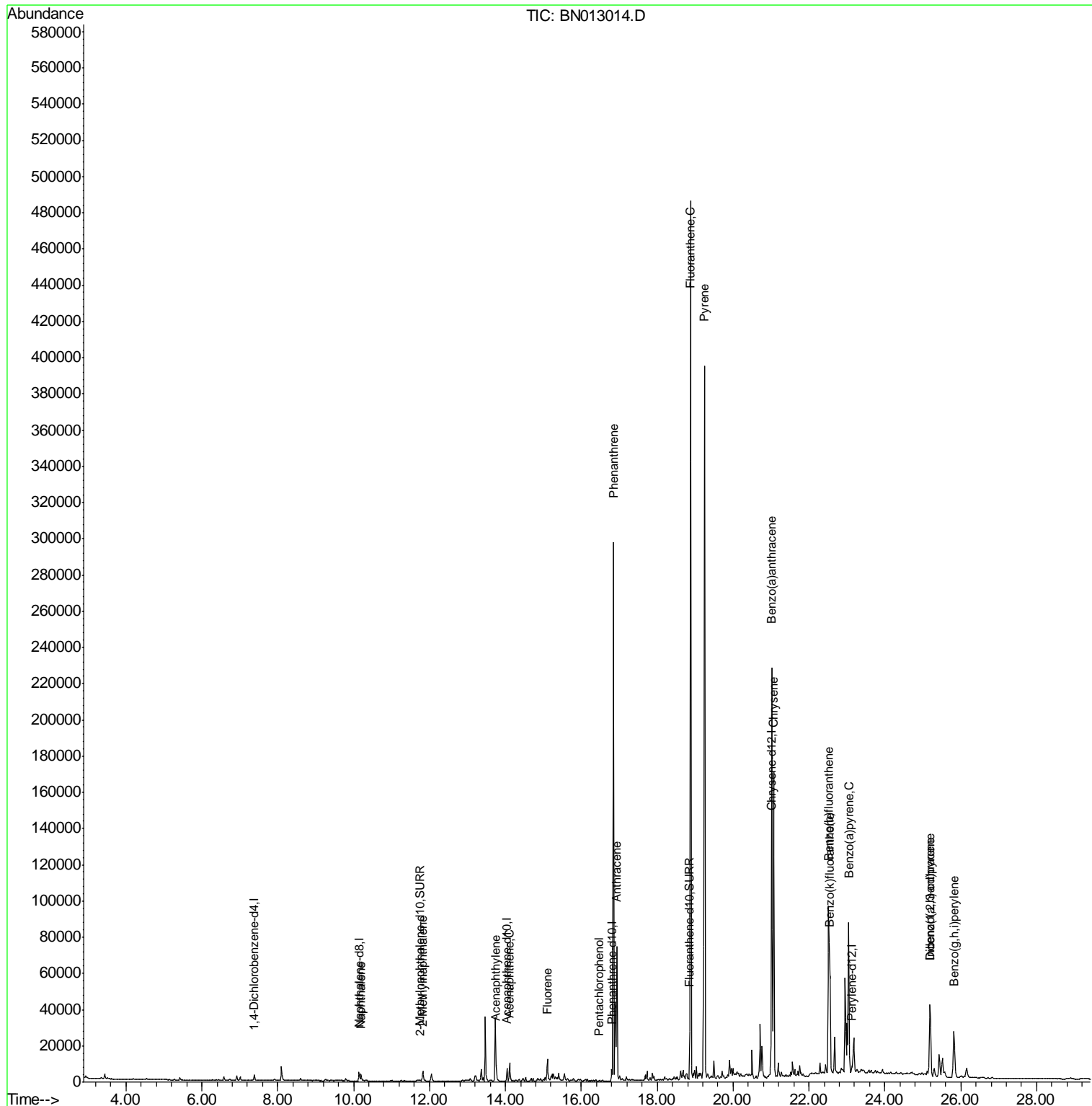
(#) = qualifier out of range (m) = manual integration (+) = signals summed

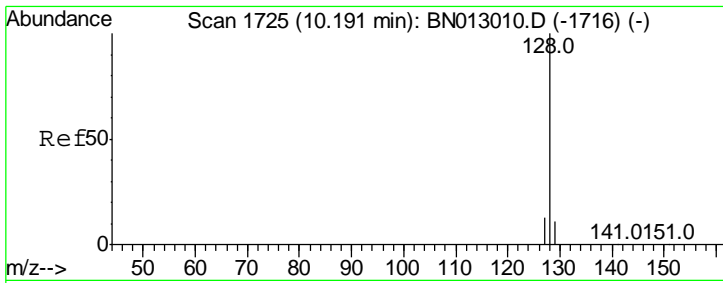
Data Path : Z:\SVOASRV\HPCHEM1\BNA N\DATA\BN120720\  
 Data File : BN013014.D  
 Acq On : 09 Dec 2020 16:06  
 Operator : CG/JU  
 Sample : L4862-10DL 5X  
 Misc :  
 ALS Vial : 84 Sample Multiplier: 1

**Instrument :**  
 BNA\_N  
**ClientSampleId :**  
 C0BB5DL

**Manual Integrations**  
**APPROVED**  
 mohammad  
 12/9/2020 10:01:24 PM

Quant Time: Dec 09 16:43:12 2020  
 Quant Method : Z:\SVOASRV\HPCHEM1\BNA N\METHODS\SOM-EPA-SIM-BN120320.M  
 Quant Title : ASP BNA STANDARDS FOR 5 POINT CALIBRATION  
 QLast Update : Wed Dec 09 07:33:34 2020  
 Response via : Initial Calibration





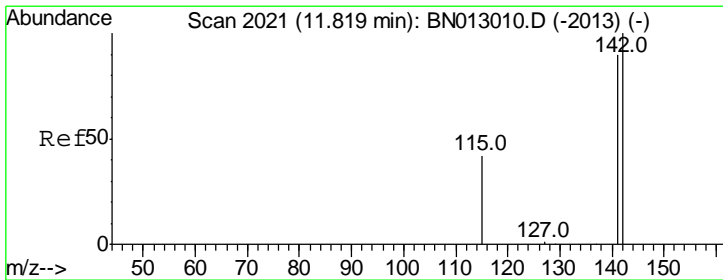
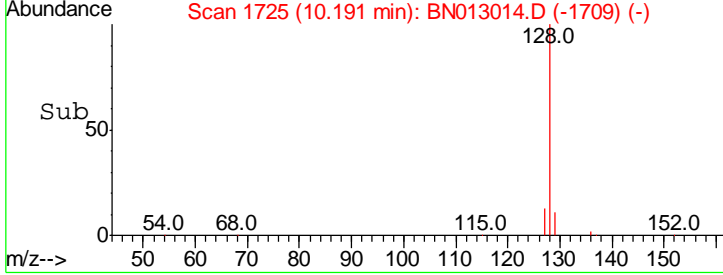
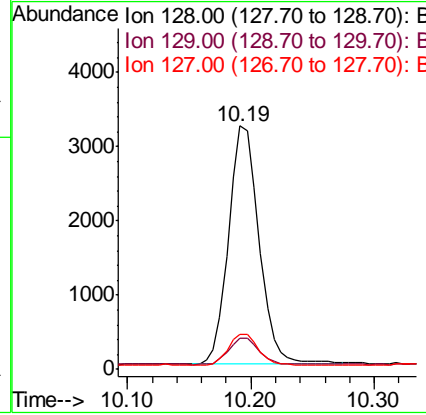
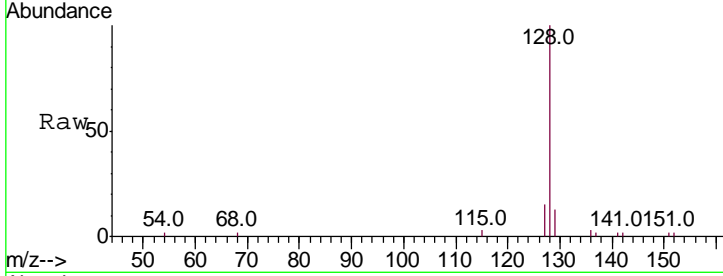
#3  
 Naphthalene  
 Concen: 0.303 ng/ul  
 RT: 10.19 min Scan# 1725  
 Delta R.T. -0.01 min  
 Lab File: BN013014.D  
 Acq: 09 Dec 2020 16:06

**Instrument :**  
 BNA\_N  
**Client Sampled :**  
 C0BB5DL

Tgt Ion	Ratio	Lower	Upper
128	100		
129	12.8	12.3	18.5
127	14.5	14.2	21.4

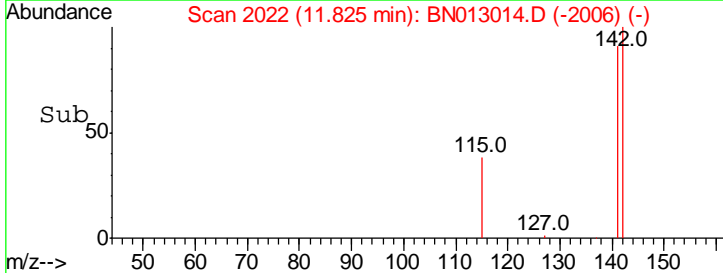
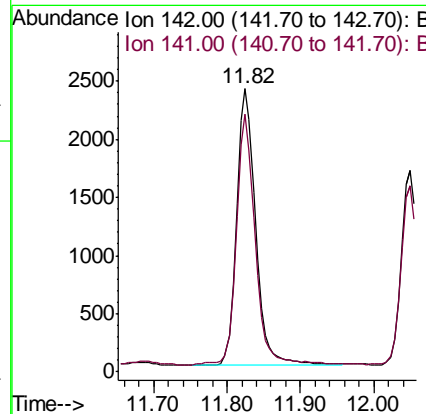
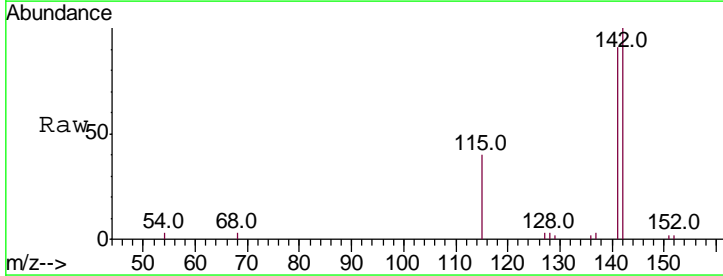
**Manual Integrations**  
**APPROVED**

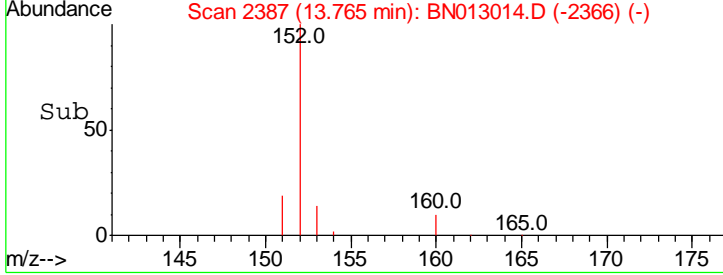
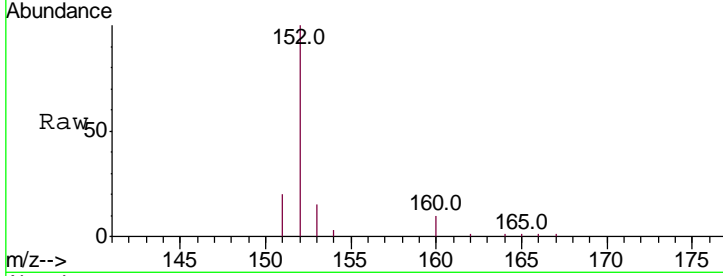
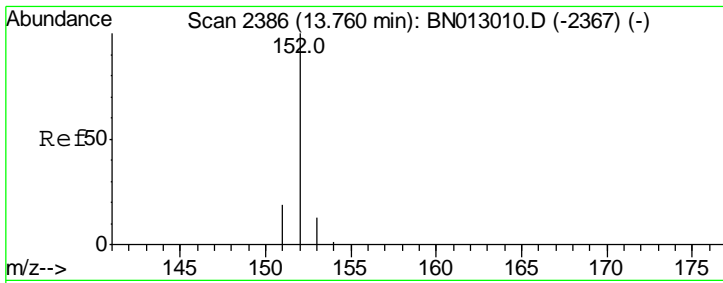
mohammad  
 12/9/2020 10:01:24 PM



#5  
 2-Methylnaphthalene  
 Concen: 0.357 ng/ul  
 RT: 11.82 min Scan# 2022  
 Delta R.T. -0.01 min  
 Lab File: BN013014.D  
 Acq: 09 Dec 2020 16:06

Tgt Ion	Ratio	Lower	Upper
142	100		
141	89.7	73.0	109.6



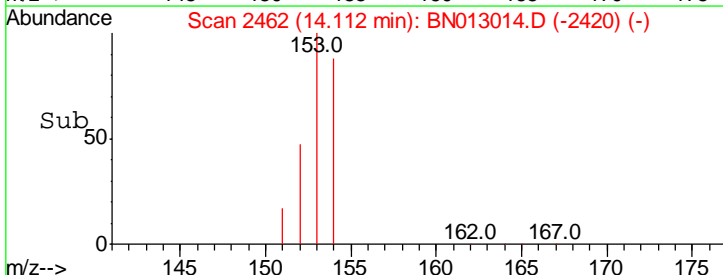
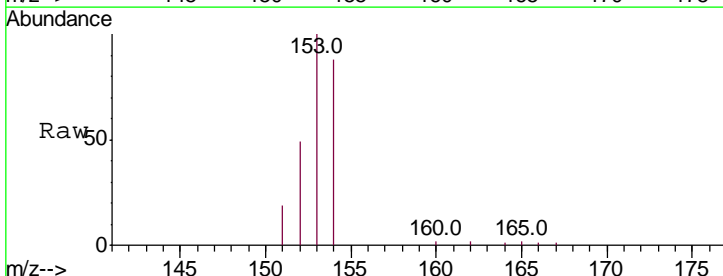
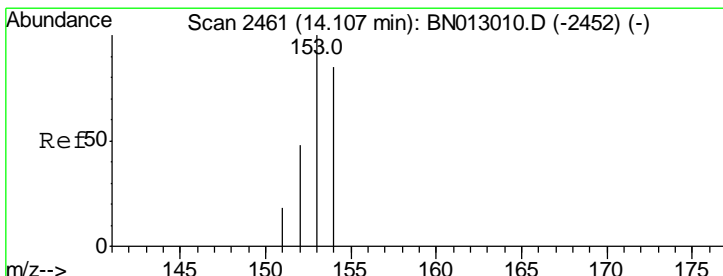
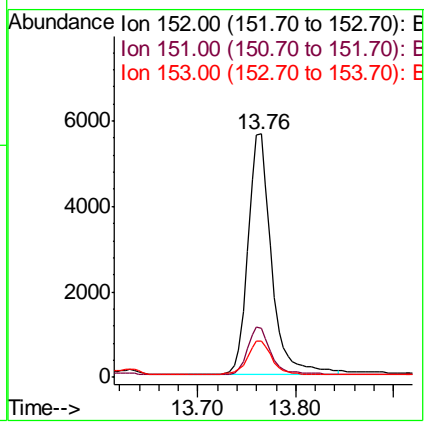


#7  
 Acenaphthylene  
 Concen: 0.573 ng/ul  
 RT: 13.76 min Scan# 2387  
 Delta R.T. -0.00 min  
 Lab File: BN013014.D  
 Acq: 09 Dec 2020 16:06

Tgt Ion	Resp	Lower	Upper
152	100		
151	20.3	18.2	27.4
153	15.0	13.1	19.7

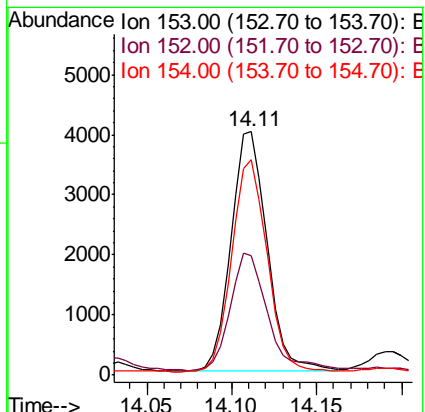
Instrument :  
 BNA\_N  
 ClientSampled :  
 C0BB5DL

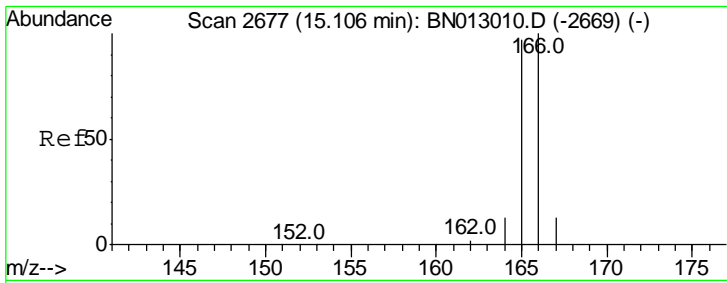
Manual Integrations  
**APPROVED**  
 mohammad  
 12/9/2020 10:01:24 PM



#8  
 Acenaphthene  
 Concen: 0.435 ng/ul  
 RT: 14.11 min Scan# 2462  
 Delta R.T. -0.00 min  
 Lab File: BN013014.D  
 Acq: 09 Dec 2020 16:06

Tgt Ion	Resp	Lower	Upper
153	100		
152	49.1	40.7	61.1
154	88.3	70.8	106.2





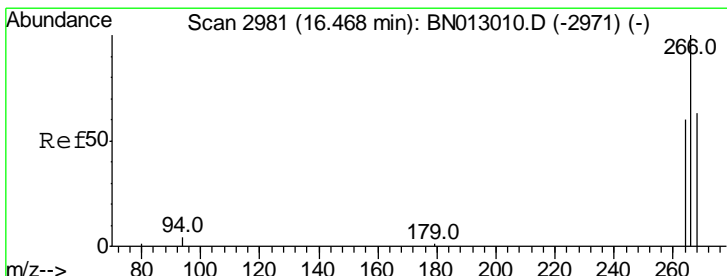
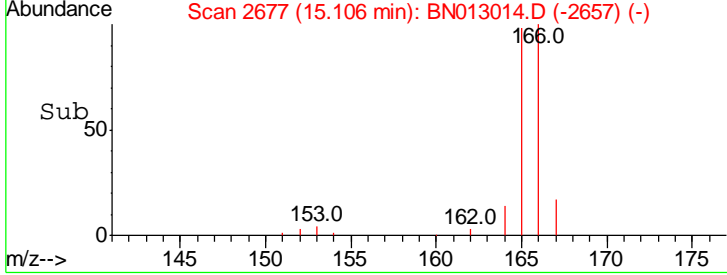
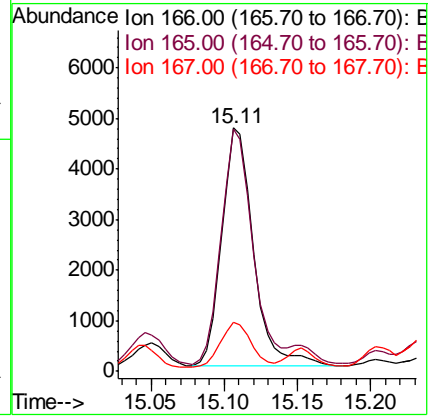
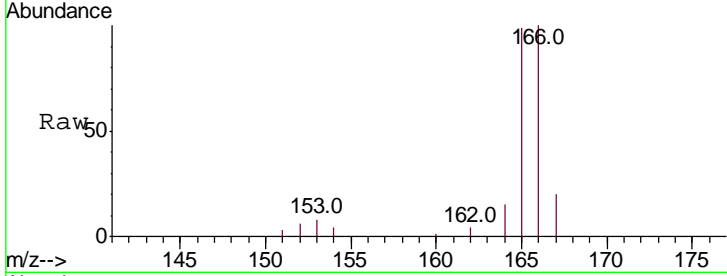
#9  
 Fluorene  
 Concen: 0.450 ng/ul  
 RT: 15.11 min Scan# 2677  
 Delta R.T. -0.01 min  
 Lab File: BN013014.D  
 Acq: 09 Dec 2020 16:06

Instrument :  
 BNA\_N  
 ClientSampled :  
 C0BB5DL

Tgt Ion	Resp	Lower	Upper
166	100		
165	99.5	79.8	119.8
167	20.3	13.8	20.8

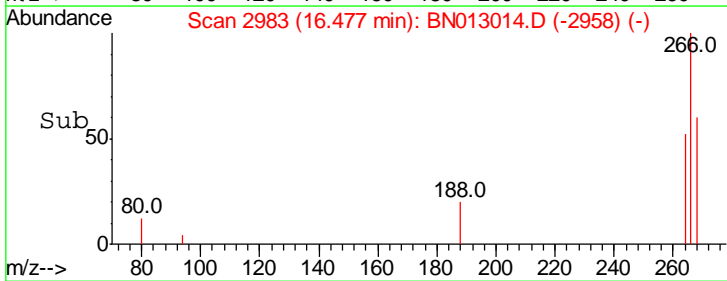
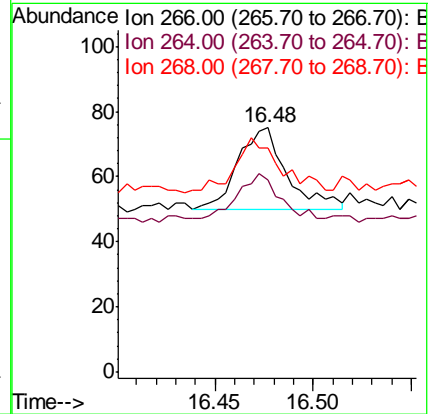
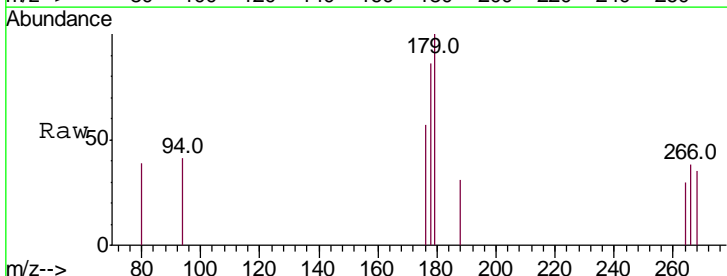
Manual Integrations  
 APPROVED

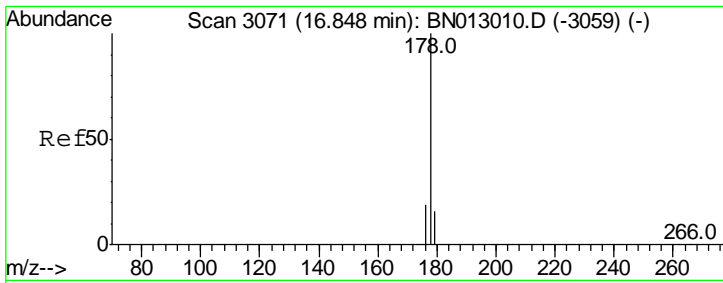
mohammad  
 12/9/2020 10:01:24 PM



#11  
 Pentachlorophenol  
 Concen: 0.021 ng/ul  
 RT: 16.48 min Scan# 2983  
 Delta R.T. 0.00 min  
 Lab File: BN013014.D  
 Acq: 09 Dec 2020 16:06

Tgt Ion	Resp	Lower	Upper
266	100		
264	54.5	51.5	77.3
268	72.7	56.0	84.0



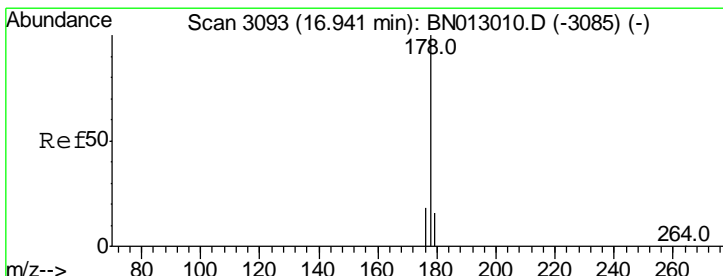
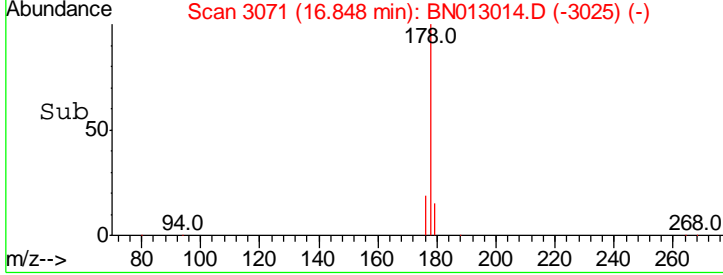
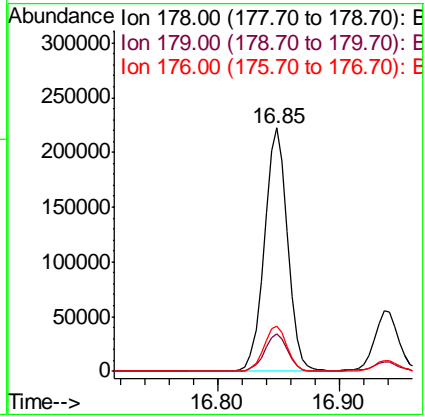
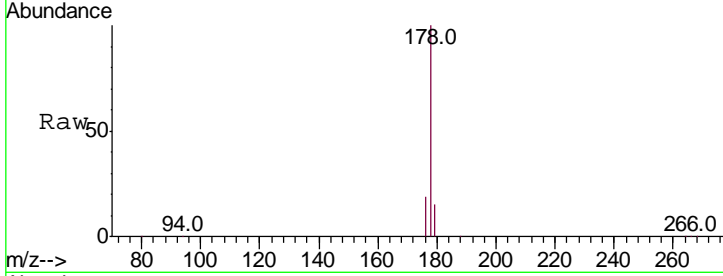


#12  
 Phenanthrene  
 Concen: 12.103 ng/ul  
 RT: 16.85 min Scan# 3071  
 Delta R.T. -0.00 min  
 Lab File: BN013014.D  
 Acq: 09 Dec 2020 16:06

Instrument :  
 BNA\_N  
 ClientSampled :  
 C0BB5DL

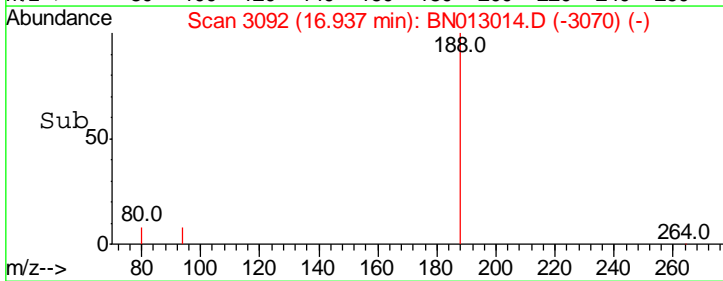
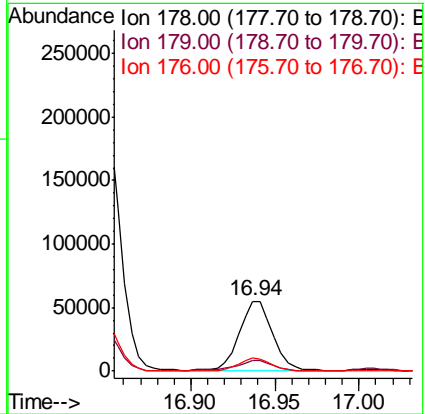
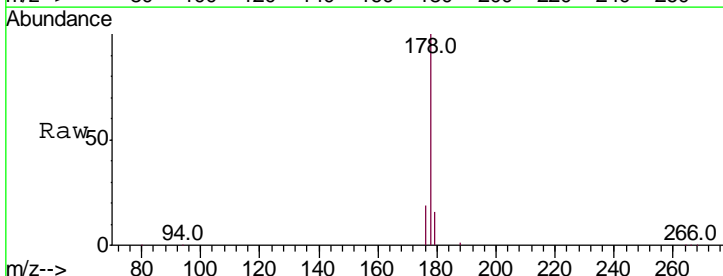
Tgt Ion	Ratio	Lower	Upper
178	100		
179	15.2	13.6	20.4
176	18.6	16.4	24.6

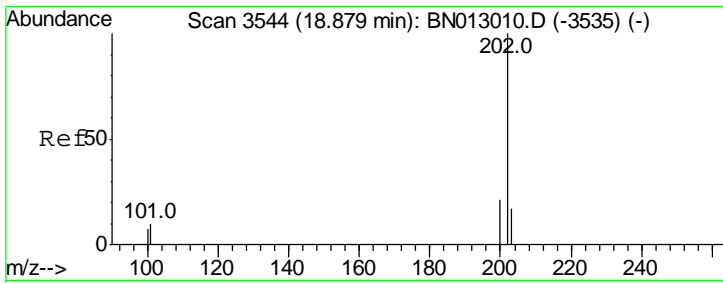
Manual Integrations  
**APPROVED**  
 mohammad  
 12/9/2020 10:01:24 PM



#13  
 Anthracene  
 Concen: 3.595 ng/ul  
 RT: 16.94 min Scan# 3092  
 Delta R.T. -0.01 min  
 Lab File: BN013014.D  
 Acq: 09 Dec 2020 16:06

Tgt Ion	Ratio	Lower	Upper
178	100		
179	15.6	14.6	21.8
176	18.6	17.1	25.7



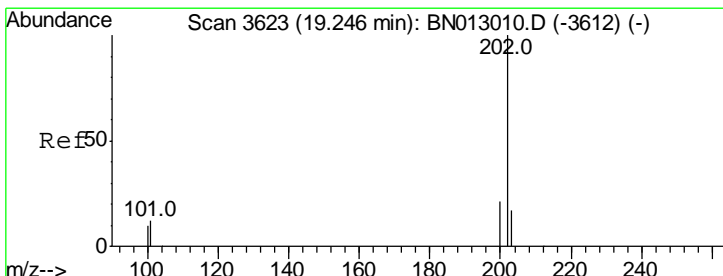
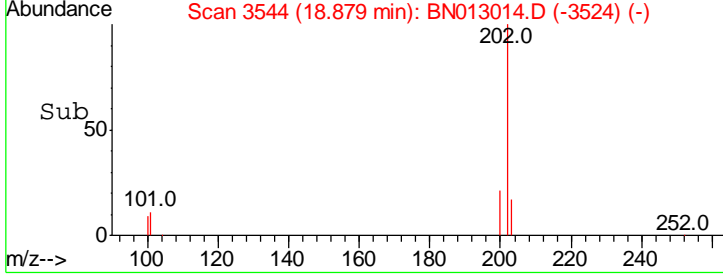
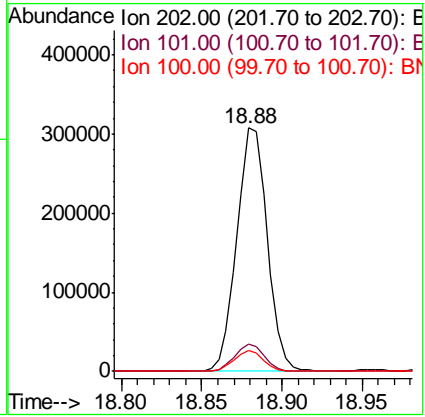
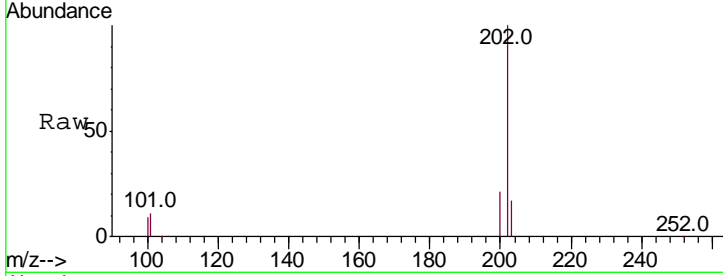


#15  
 Fluoranthene  
 Concen: 14.177 ng/ul  
 RT: 18.88 min Scan# 3544  
 Delta R.T. -0.00 min  
 Lab File: BN013014.D  
 Acq: 09 Dec 2020 16:06

**Instrument :**  
 BNA\_N  
**ClientSampled :**  
 C0BB5DL

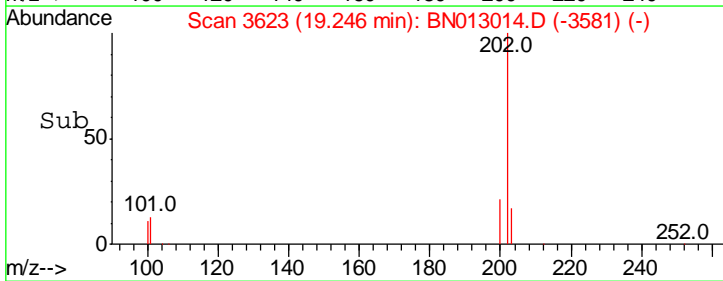
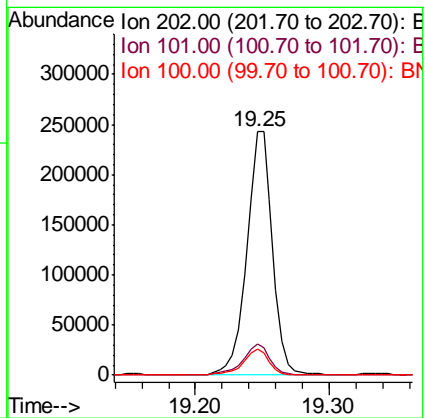
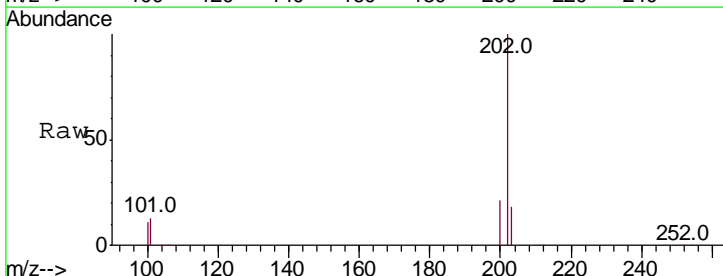
Tgt Ion	Ratio	Lower	Upper
202	100		
101	11.1	0.0	30.6
100	8.6	0.0	28.7

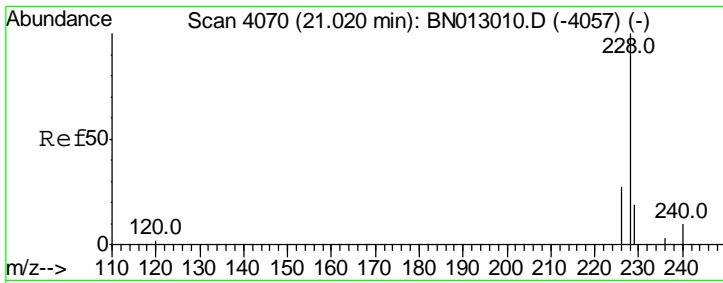
**Manual Integrations**  
**APPROVED**  
 mohammad  
 12/9/2020 10:01:24 PM



#17  
 Pyrene  
 Concen: 15.382 ng/ul  
 RT: 19.25 min Scan# 3623  
 Delta R.T. -0.00 min  
 Lab File: BN013014.D  
 Acq: 09 Dec 2020 16:06

Tgt Ion	Ratio	Lower	Upper
202	100		
101	12.9	9.1	13.7
100	10.8	7.5	11.3





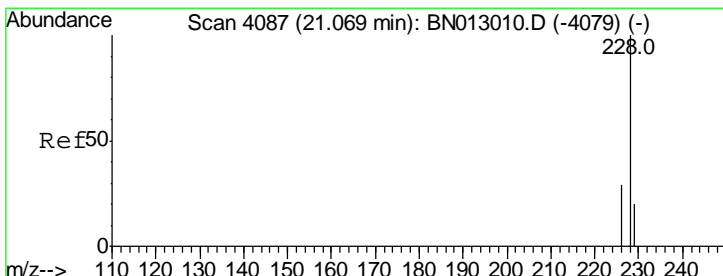
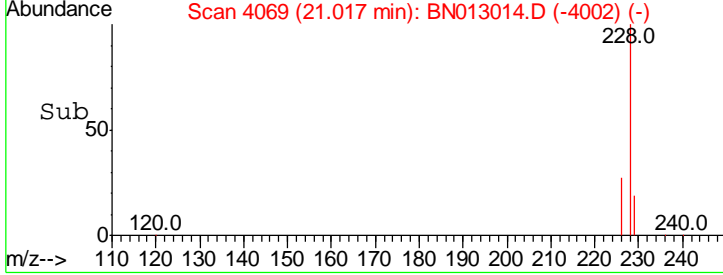
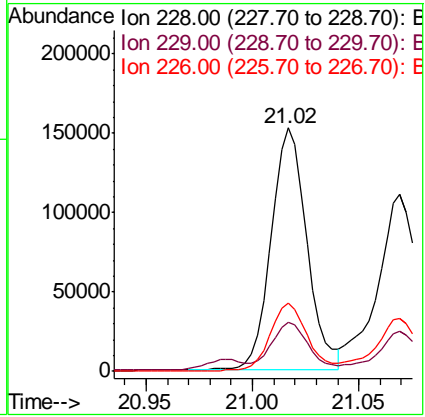
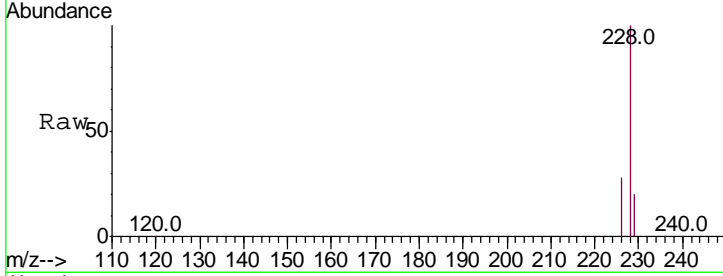
#18  
 Benzo(a)anthracene  
 Concen: 9.640 ng/ul  
 RT: 21.02 min Scan# 4069  
 Delta R.T. -0.00 min  
 Lab File: BN013014.D  
 Acq: 09 Dec 2020 16:06

Instrument :  
 BNA\_N  
 ClientSampled :  
 C0BB5DL

Tgt Ion: 228 Resp: 177212

Ion	Ratio	Lower	Upper
228	100		
229	20.1	16.3	24.5
226	27.8	23.4	35.2

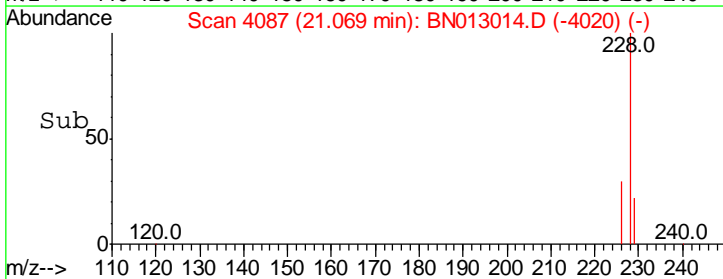
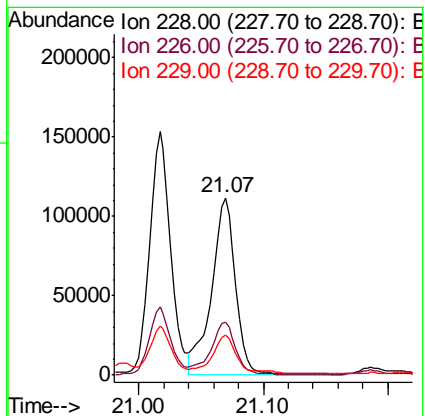
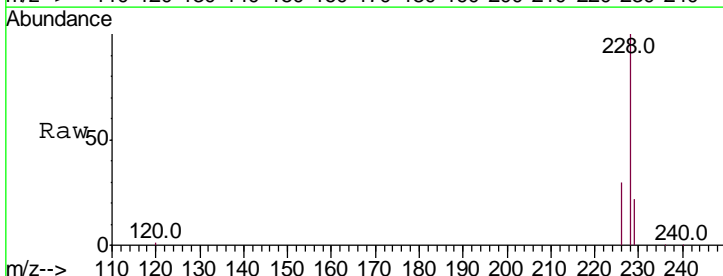
Manual Integrations  
 APPROVED  
 mohammad  
 12/9/2020 10:01:24 PM



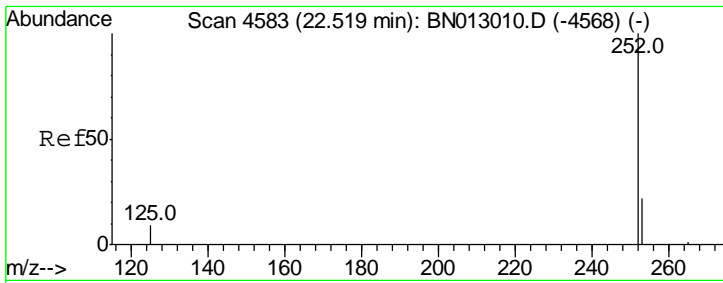
#19  
 Chrysene  
 Concen: 7.210 ng/ul  
 RT: 21.07 min Scan# 4087  
 Delta R.T. -0.00 min  
 Lab File: BN013014.D  
 Acq: 09 Dec 2020 16:06

Tgt Ion: 228 Resp: 146427

Ion	Ratio	Lower	Upper
228	100		
226	29.9	25.0	37.6
229	22.3	16.4	24.6

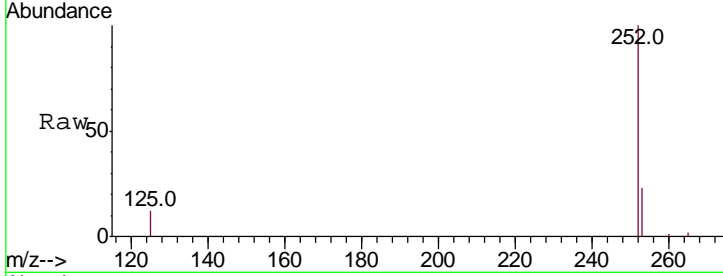






#21  
 Benzo(b)fluoranthene  
 Concen: 7.132 ng/ul m  
 RT: 22.52 min Scan# 4583  
 Delta R.T. -0.00 min  
 Lab File: BN013014.D  
 Acq: 09 Dec 2020 16:06

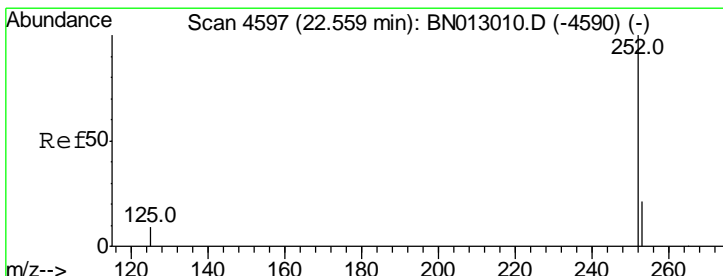
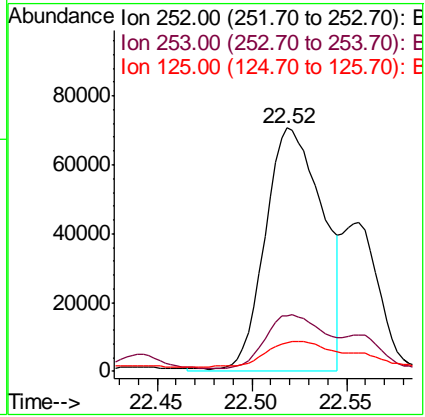
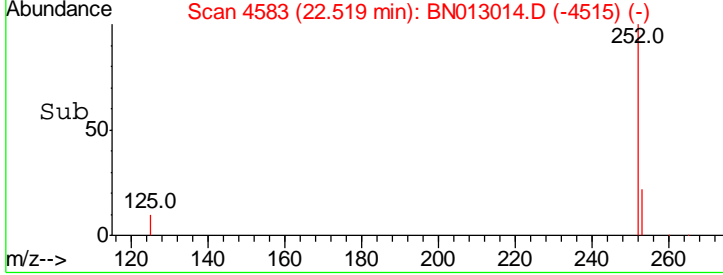
**Instrument :**  
 BNA\_N  
**ClientSampled :**  
 C0BB5DL



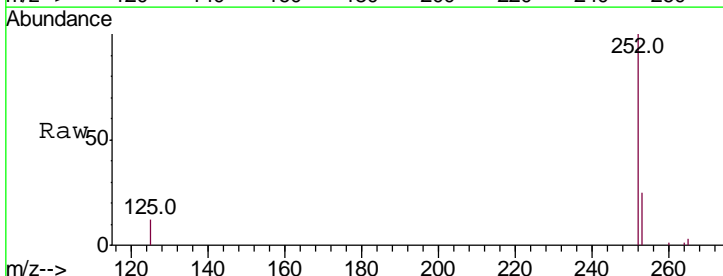
Tgt Ion: 252 Resp: 149275

Ion	Ratio	Lower	Upper
252	100		
253	23.0	0.0	59.6
125	11.9	0.0	26.0

**Manual Integrations**  
**APPROVED**  
 mohammad  
 12/9/2020 10:01:24 PM

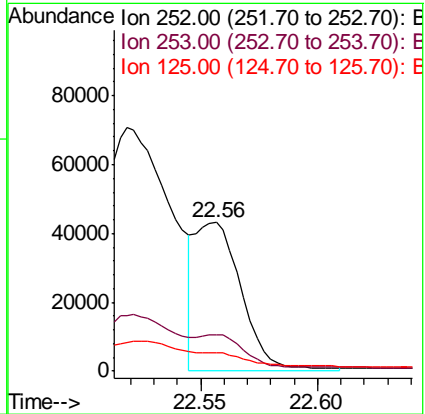
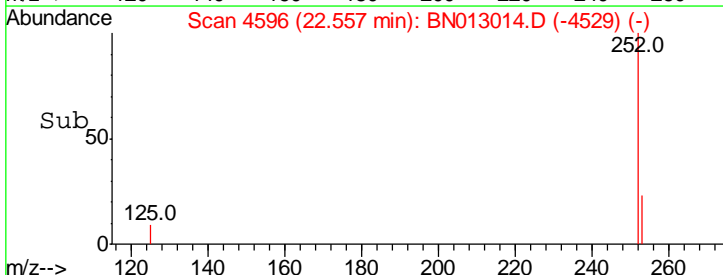


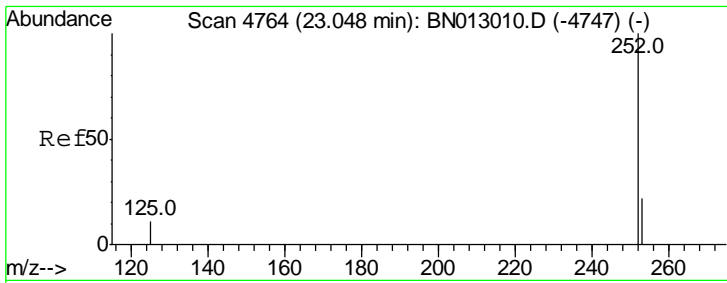
#22  
 Benzo(k)fluoranthene  
 Concen: 2.573 ng/ul m  
 RT: 22.56 min Scan# 4596  
 Delta R.T. -0.00 min  
 Lab File: BN013014.D  
 Acq: 09 Dec 2020 16:06



Tgt Ion: 252 Resp: 59515

Ion	Ratio	Lower	Upper
252	100		
253	24.7	23.4	35.2
125	12.3	11.1	16.7





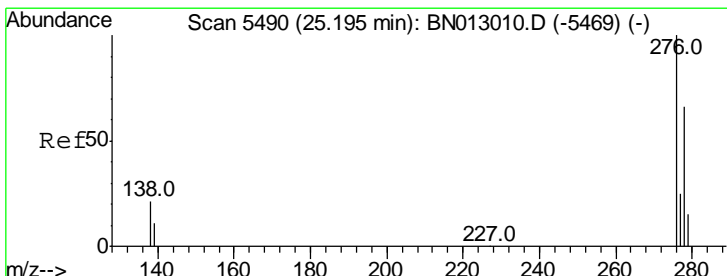
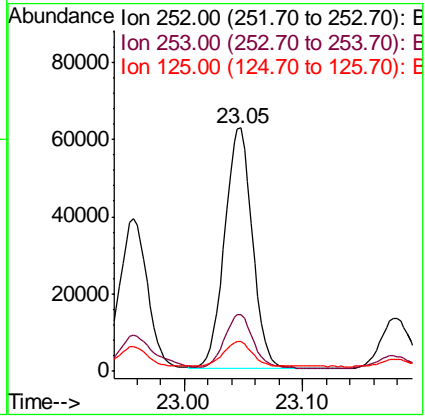
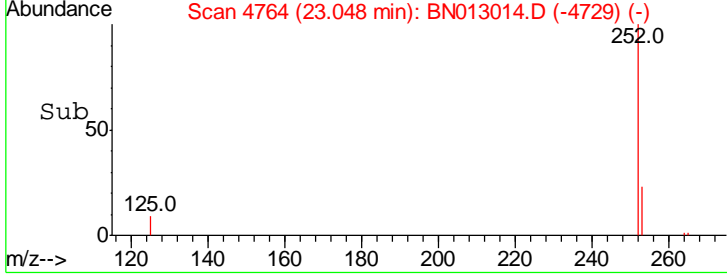
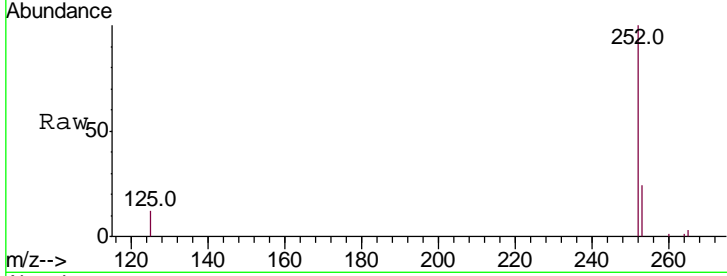
#23  
 Benzo(a)pyrene  
 Concen: 5.250 ng/ul  
 RT: 23.05 min Scan# 4764  
 Delta R.T. 0.00 min  
 Lab File: BN013014.D  
 Acq: 09 Dec 2020 16:06

**Instrument :**  
 BNA\_N  
**ClientSampled :**  
 C0BB5DL

Tgt Ion	Resp	Lower	Upper
252	101959		
253	23.5	26.5	39.7#
125	12.4	14.2	21.2#

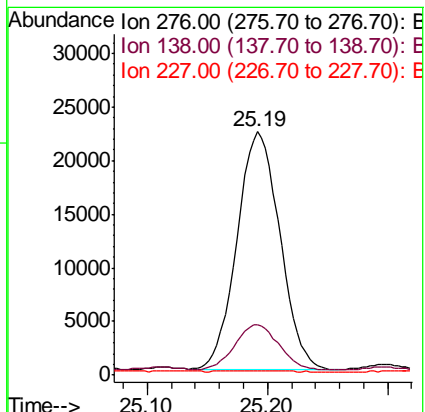
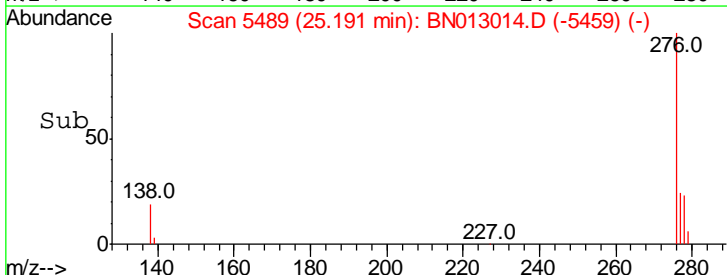
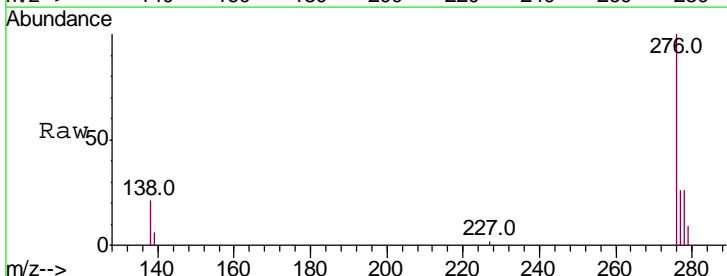
**Manual Integrations**  
**APPROVED**

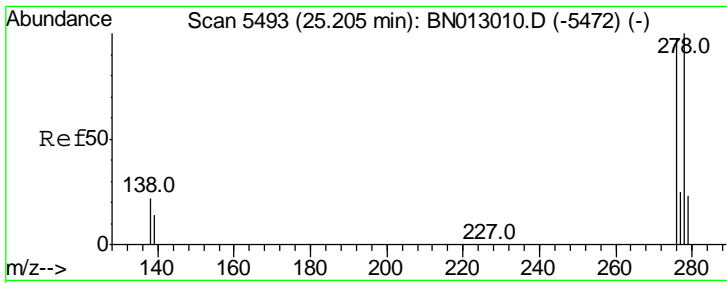
mohammad  
 12/9/2020 10:01:24 PM



#24  
 Indeno(1,2,3-cd)pyrene  
 Concen: 2.161 ng/ul  
 RT: 25.19 min Scan# 5489  
 Delta R.T. -0.00 min  
 Lab File: BN013014.D  
 Acq: 09 Dec 2020 16:06

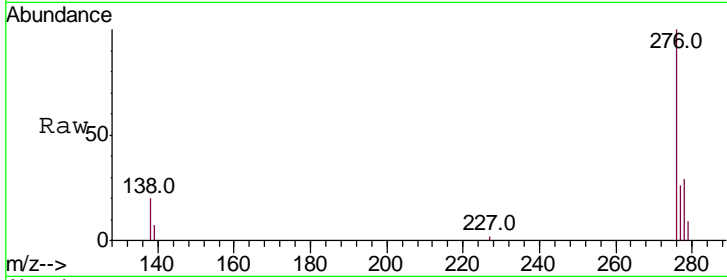
Tgt Ion	Resp	Lower	Upper
276	55135		
276	100		
138	19.5	16.2	24.2
227	0.0	0.0	0.0





#25  
 Dibenzo(a,h)anthracene  
 Concen: 0.847 ng/ul  
 RT: 25.20 min Scan# 5491  
 Delta R.T. -0.01 min  
 Lab File: BN013014.D  
 Acq: 09 Dec 2020 16:06

Instrument :  
 BNA\_N  
 ClientSampled :  
 C0BB5DL

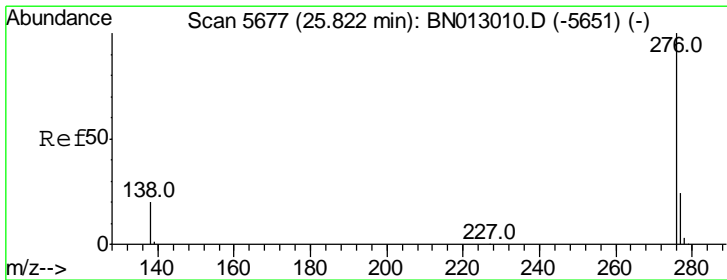
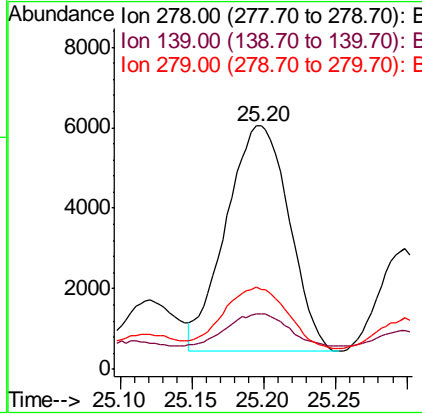
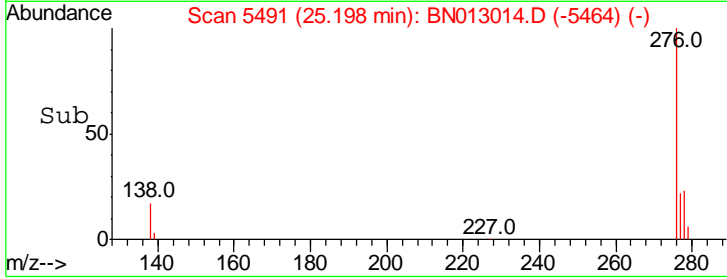


Tgt Ion: 278 Resp: 17085

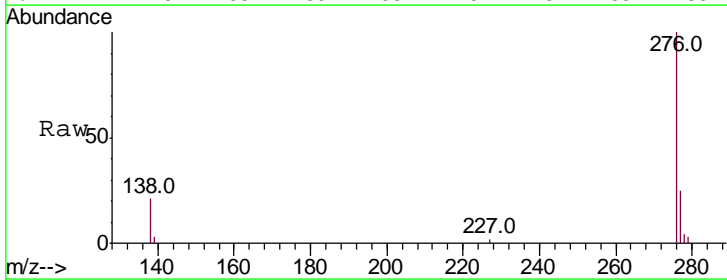
Ion	Ratio	Lower	Upper
278	100		
139	22.8	14.5	21.7#
279	32.6	26.3	39.5

Manual Integrations  
 APPROVED

mohammad  
 12/9/2020 10:01:24 PM



#26  
 Benzo(g,h,i)perylene  
 Concen: 2.162 ng/ul  
 RT: 25.82 min Scan# 5677  
 Delta R.T. -0.00 min  
 Lab File: BN013014.D  
 Acq: 09 Dec 2020 16:06



Tgt Ion: 276 Resp: 49895

Ion	Ratio	Lower	Upper
276	100		
138	20.7	16.3	24.5
277	25.1	21.8	32.6

