

Data Path : Z:\SVOASRV\HPCHEM1\BNA\_N\DATA\BN121218\  
 Data File : BN003858.D  
 Acq On : 12 Dec 2018 19:24  
 Operator : JU/SJ  
 Sample : J6228-11  
 Misc :  
 ALS Vial : 8 Sample Multiplier: 1

Instrument :  
 BNA\_N  
 ClientSampleId :  
 F9E90

Quant Time: Dec 13 04:15:57 2018  
 Quant Method : Z:\SVOASRV\HPCHEM1\BNA\_N\METHODS\SOM-EPA-BN121218MA.M  
 Quant Title : SVOA CALIBRATION  
 QLast Update : Thu Dec 13 04:12:26 2018  
 Response via : Initial Calibration

Internal Standards	R.T.	QIon	Response	Conc	Units	Dev(Min)
1) 1,4-Dichlorobenzene-d4	7.83	152	18136	20.00	ng/ul	0.00
18) Naphthalene-d8	10.63	136	89527	20.00	ng/ul	0.00
35) Acenaphthene-d10	14.47	164	57301	20.00	ng/ul	0.00
61) Phenanthrene-d10	17.21	188	144239	20.00	ng/ul	0.00
77) Chrysene-d12	21.39	240	195471	20.00	ng/ul	0.00
85) Perylene-d12	23.71	264	235549	20.00	ng/ul	0.00

## System Monitoring Compounds

3) 1,4-Dioxane-d8	3.29	96	1393	5.03	ng/uL	0.00
5) Phenol-d5	6.99	99	40036	22.46	ng/ul	0.00
7) Bis-(2-Chloroethyl)ether-d	7.16	67	24709	25.46	ng/ul	0.00
9) 2-Chlorophenol-d4	7.36	132	33757	24.16	ng/ul	0.00
13) 4-Methylphenol-d8	8.52	113	33430	22.37	ng/ul	0.00
19) Nitrobenzene-d5	9.00	128	17990	25.36	ng/ul	0.00
22) 2-Nitrophenol-d4	9.72	143	20007	24.90	ng/ul	0.00
26) 2,4-Dichlorophenol-d3	10.24	165	34241	23.24	ng/ul	0.00
29) 4-Chloroaniline-d4	10.77	131	47288	34.30	ng/ul	0.00
43) Dimethylphthalate-d6	13.87	166	135638	26.52	ng/ul	0.00
46) Acenaphthylene-d8	14.16	160	159352	26.26	ng/ul	0.00
51) 4-Nitrophenol-d4	14.66	143	23145	21.89	ng/ul	0.00
57) Fluorene-d10	15.46	176	118000	26.68	ng/ul	0.00
62) 4,6-Dinitro-2-methylphenol	15.58	200	20061	19.31	ng/ul	0.00
70) Anthracene-d10	17.31	188	195145	26.77	ng/ul	0.00
78) Pyrene-d10	19.60	212	238565	27.28	ng/ul	0.00
89) Benzo(a)pyrene-d12	23.56	264	341466	26.72	ng/ul	0.00

## Target Compounds

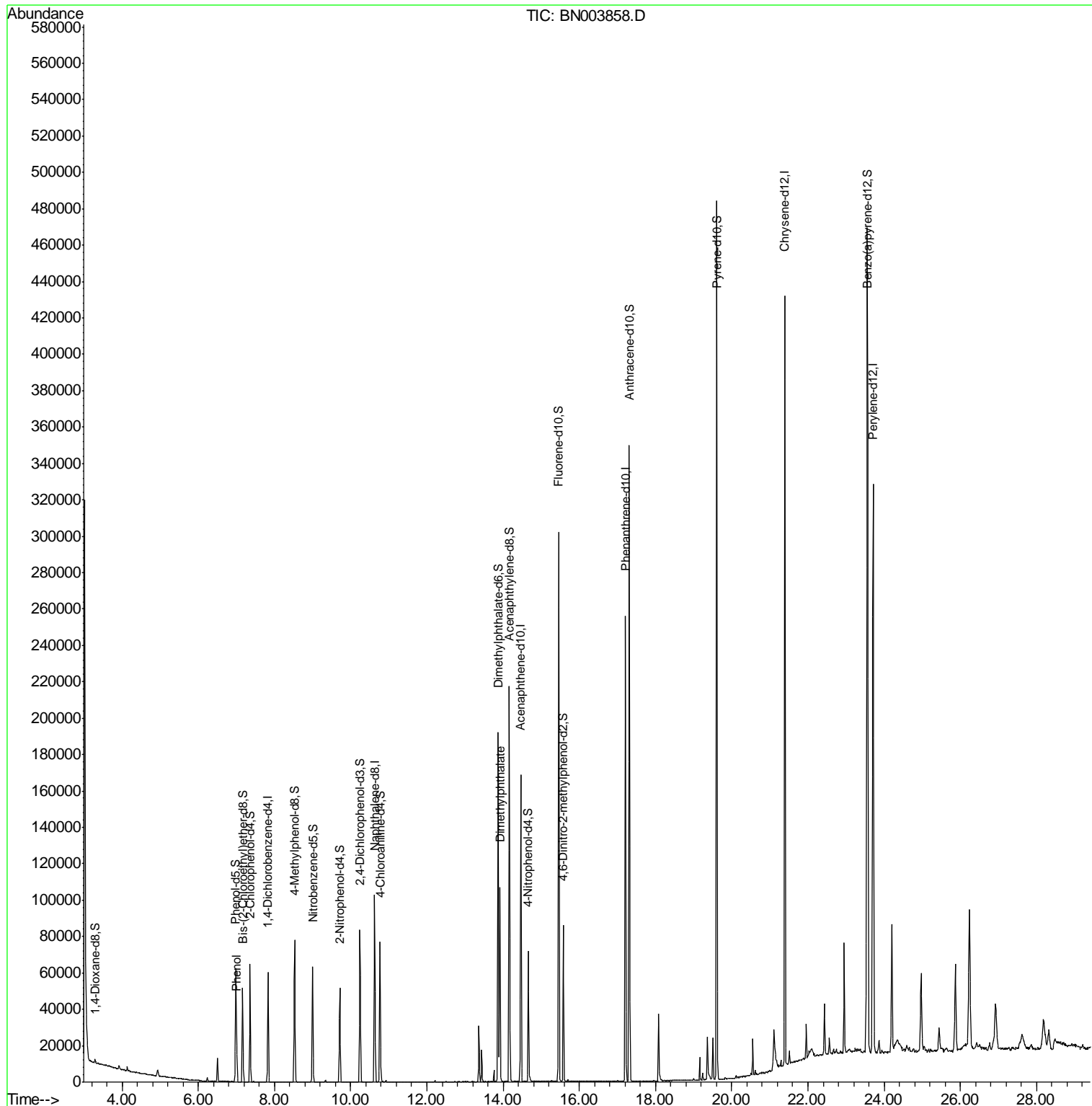
					Ovalue
6) Phenol	7.01	94	10051	5.585	ng/ul 98
44) Dimethylphthalate	13.92	163	54022	10.819	ng/ul 99

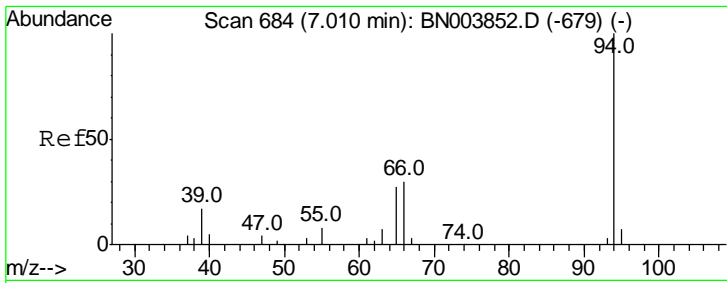
(#) = qualifier out of range (m) = manual integration (+) = signals summed

Data Path : Z:\SVOASRV\HPCHEM1\BNA N\DATA\BN121218\  
 Data File : BN003858.D  
 Acq On : 12 Dec 2018 19:24  
 Operator : JU/SJ  
 Sample : J6228-11  
 Misc :  
 ALS Vial : 8 Sample Multiplier: 1

Instrument :  
 BNA\_N  
 Client Sampled :  
 F9E90

Quant Time: Dec 13 04:15:57 2018  
 Quant Method : Z:\SVOASRV\HPCHEM1\BNA\_N\METHODS\SOM-EPA-BN121218MA.M  
 Quant Title : SVOA CALIBRATION  
 QLast Update : Thu Dec 13 04:12:26 2018  
 Response via : Initial Calibration

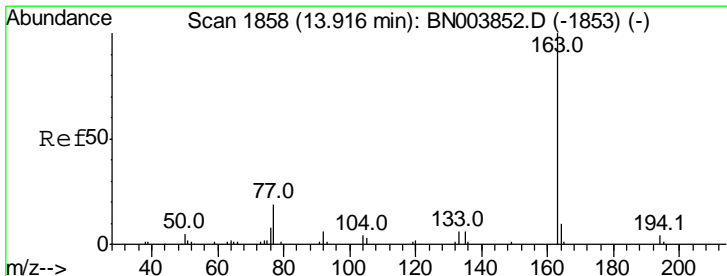
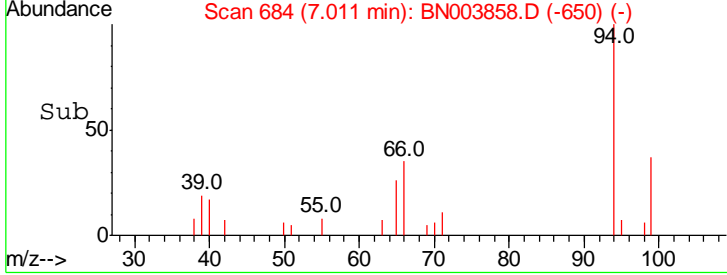
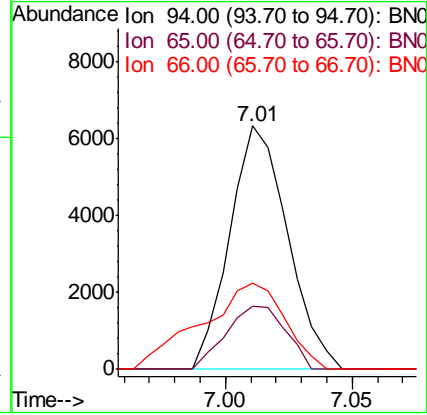
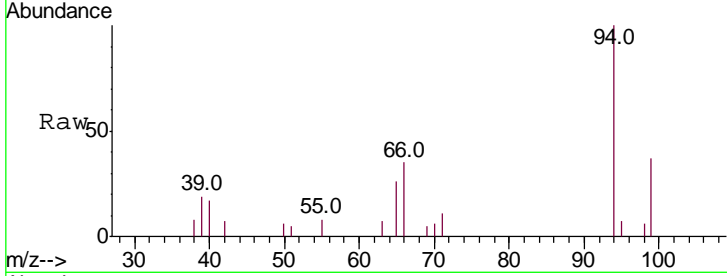




#6  
 Phenol  
 Concen: 5.585 ng/ul  
 RT: 7.01 min Scan# 684  
 Delta R.T. 0.00 min  
 Lab File: BN003858.D  
 Acq: 12 Dec 2018 19:24

**Instrument :**  
 BNA\_N  
**ClientSampled :**  
 F9E90

Tgt Ion	Resp	Lower	Upper
94	100		
65	26.1	21.2	31.8
66	35.1	26.9	40.3



#44  
 Dimethylphthalate  
 Concen: 10.819 ng/ul  
 RT: 13.92 min Scan# 1858  
 Delta R.T. 0.00 min  
 Lab File: BN003858.D  
 Acq: 12 Dec 2018 19:24

Tgt Ion	Resp	Lower	Upper
163	100		
194	4.3	3.4	5.0
164	10.4	7.9	11.9

