

Data Path : Z:\SVOASRV\HPCHEM1\BNA N\DATA\BN121218\  
 Data File : BN003871.D  
 Acq On : 13 Dec 2018 02:59  
 Operator : JU/SJ  
 Sample : J6229-02  
 Misc :  
 ALS Vial : 20 Sample Multiplier: 1

Instrument :  
 BNA\_N  
 ClientSampleId :  
 F9E93

Quant Time: Dec 13 06:04:11 2018  
 Quant Method : Z:\SVOASRV\HPCHEM1\BNA\_N\METHODS\SOM-EPA-BN121218MA.M  
 Quant Title : SVOA CALIBRATION  
 QLast Update : Thu Dec 13 06:00:44 2018  
 Response via : Initial Calibration

Internal Standards	R.T.	QIon	Response	Conc	Units	Dev(Min)
1) 1,4-Dichlorobenzene-d4	7.83	152	22313	20.00	ng/ul	0.00
18) Naphthalene-d8	10.63	136	111586	20.00	ng/ul	0.00
35) Acenaphthene-d10	14.46	164	72606	20.00	ng/ul	0.00
61) Phenanthrene-d10	17.21	188	182507	20.00	ng/ul	0.00
77) Chrysene-d12	21.39	240	246266	20.00	ng/ul	0.00
85) Perylene-d12	23.70	264	300302	20.00	ng/ul	0.00

## System Monitoring Compounds

3) 1,4-Dioxane-d8	3.29	96	2062	6.05	ng/uL	0.00
5) Phenol-d5	6.99	99	58822	26.82	ng/ul	0.00
7) Bis-(2-Chloroethyl)ether-d	7.16	67	36232	30.34	ng/ul	0.00
9) 2-Chlorophenol-d4	7.36	132	49672	28.90	ng/ul	0.00
13) 4-Methylphenol-d8	8.52	113	50211	27.31	ng/ul	0.00
19) Nitrobenzene-d5	9.00	128	27316	30.90	ng/ul	0.00
22) 2-Nitrophenol-d4	9.71	143	30849	30.81	ng/ul	0.00
26) 2,4-Dichlorophenol-d3	10.24	165	53039	28.88	ng/ul	0.00
29) 4-Chloroaniline-d4	10.77	131	80614	46.91	ng/ul	0.00
43) Dimethylphthalate-d6	13.87	166	212170	32.74	ng/ul	0.00
46) Acenaphthylene-d8	14.16	160	250199	32.54	ng/ul	0.00
51) 4-Nitrophenol-d4	14.66	143	39317	29.34	ng/ul	0.00
57) Fluorene-d10	15.46	176	186409	33.26	ng/ul	0.00
62) 4,6-Dinitro-2-methylphenol	15.58	200	35422	26.95	ng/ul	0.00
70) Anthracene-d10	17.31	188	309058	33.51	ng/ul	0.00
78) Pyrene-d10	19.60	212	379988	34.49	ng/ul	0.00
89) Benzo(a)pyrene-d12	23.56	264	560136	34.38	ng/ul	0.00

## Target Compounds

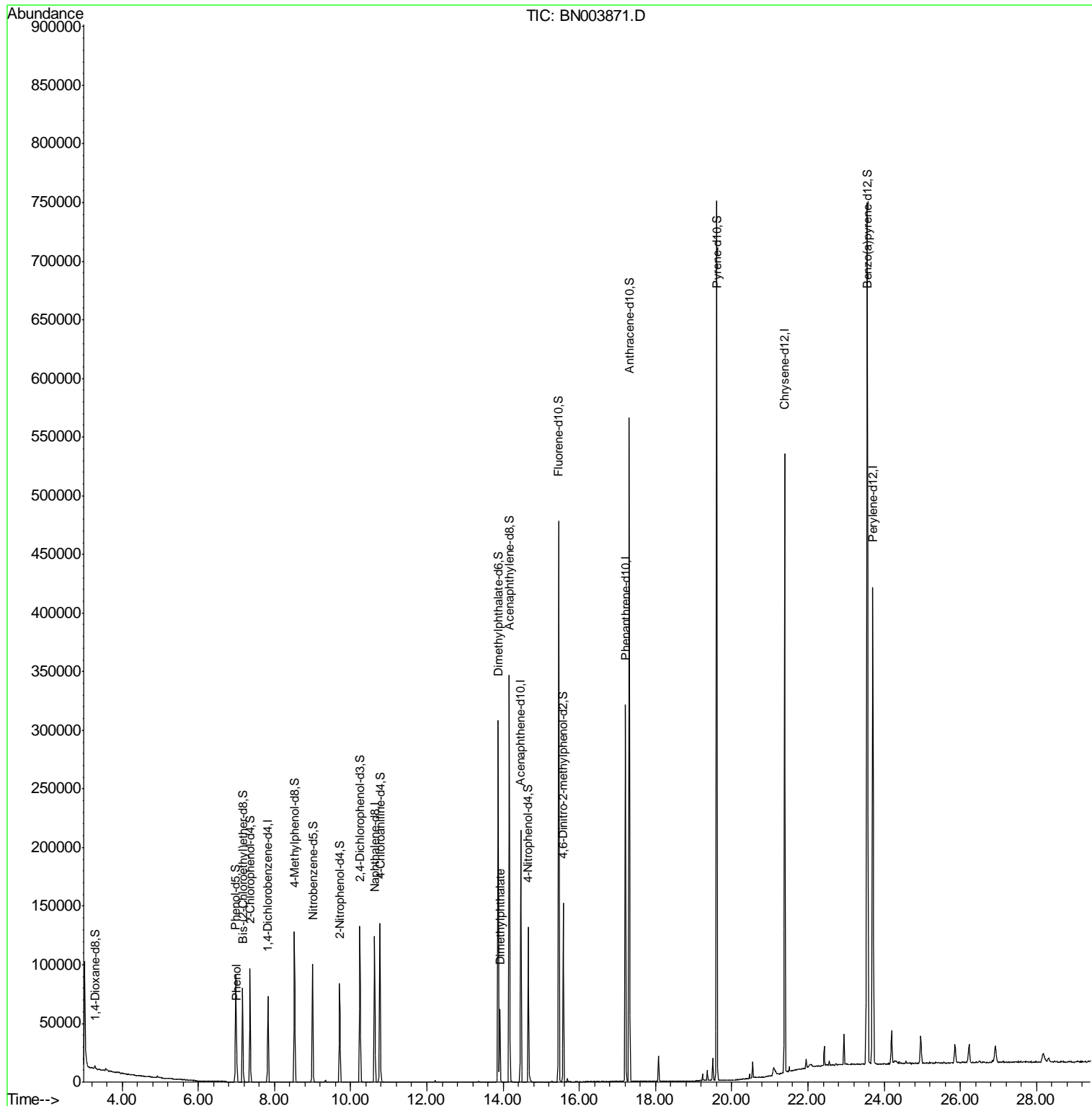
					Ovalue
6) Phenol	7.01	94	11056	4.993	ng/ul 98
44) Dimethylphthalate	13.92	163	41628	6.579	ng/ul 99

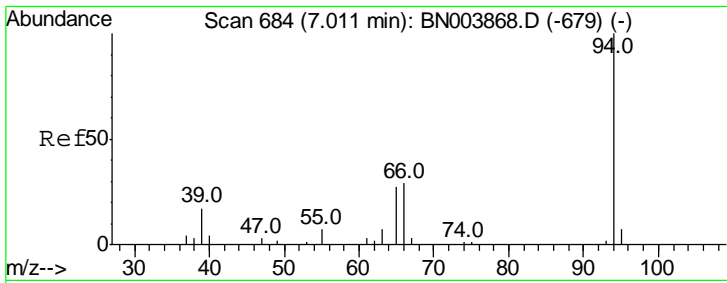
(#) = qualifier out of range (m) = manual integration (+) = signals summed

Data Path : Z:\SVOASRV\HPCHEM1\BNA N\DATA\BN121218\  
 Data File : BN003871.D  
 Acq On : 13 Dec 2018 02:59  
 Operator : JU/SJ  
 Sample : J6229-02  
 Misc :  
 ALS Vial : 20 Sample Multiplier: 1

Instrument :  
 BNA\_N  
 ClientSampleId :  
 F9E93

Quant Time: Dec 13 06:04:11 2018  
 Quant Method : Z:\SVOASRV\HPCHEM1\BNA\_N\METHODS\SOM-EPA-BN121218MA.M  
 Quant Title : SVOA CALIBRATION  
 QLast Update : Thu Dec 13 06:00:44 2018  
 Response via : Initial Calibration

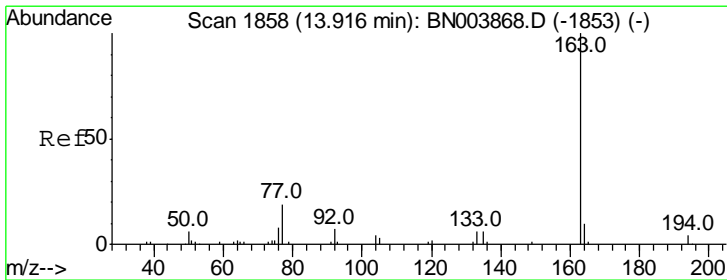
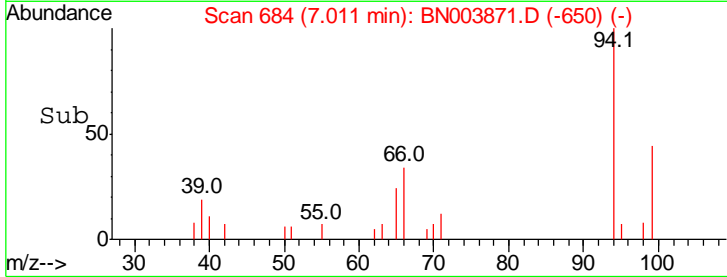
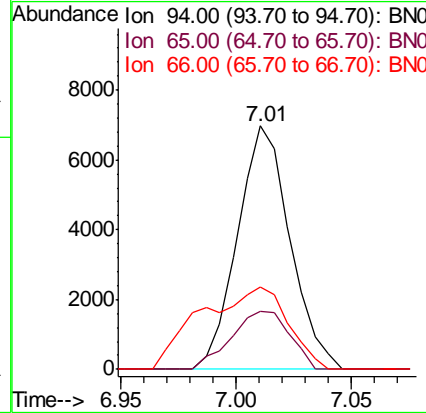
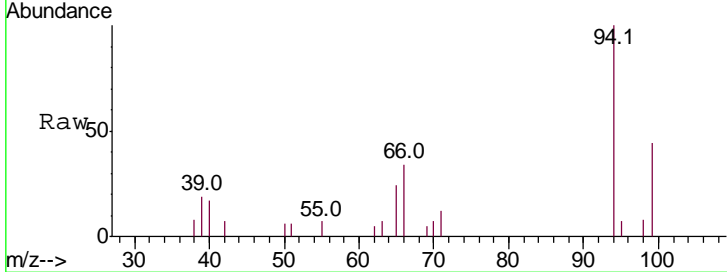




#6  
 Phenol  
 Concen: 4.993 ng/ul  
 RT: 7.01 min Scan# 684  
 Delta R.T. -0.00 min  
 Lab File: BN003871.D  
 Acq: 13 Dec 2018 02:59

Instrument :  
 BNA\_N  
 ClientSampled :  
 F9E93

Tgt Ion	Resp	Lower	Upper
94	11056		
94	100		
65	24.0	21.2	31.8
66	33.8	26.9	40.3



#44  
 Dimethylphthalate  
 Concen: 6.579 ng/ul  
 RT: 13.92 min Scan# 1858  
 Delta R.T. -0.00 min  
 Lab File: BN003871.D  
 Acq: 13 Dec 2018 02:59

Tgt Ion	Resp	Lower	Upper
163	41628		
163	100		
194	4.4	3.4	5.0
164	10.4	7.9	11.9

