

Data Path : Z:\SVOASRV\HPCHEM1\BNA N\DATA\BN121218\  
 Data File : BN003882.D  
 Acq On : 13 Dec 2018 09:24  
 Operator : JU/SJ  
 Sample : J6228-20  
 Misc :  
 ALS Vial : 31 Sample Multiplier: 1

Instrument :  
 BNA\_N  
 ClientSampleId :  
 F9E59

Quant Time: Dec 13 10:41:34 2018  
 Quant Method : Z:\SVOASRV\HPCHEM1\BNA\_N\METHODS\SOM-EPA-BN121218MA.M  
 Quant Title : SVOA CALIBRATION  
 QLast Update : Thu Dec 13 06:00:44 2018  
 Response via : Initial Calibration

Internal Standards	R.T.	QIon	Response	Conc	Units	Dev(Min)
1) 1,4-Dichlorobenzene-d4	7.83	152	22554	20.00	ng/ul	0.00
18) Naphthalene-d8	10.63	136	111782	20.00	ng/ul	0.00
35) Acenaphthene-d10	14.46	164	72005	20.00	ng/ul	0.00
61) Phenanthrene-d10	17.21	188	178945	20.00	ng/ul	0.00
77) Chrysene-d12	21.40	240	246002	20.00	ng/ul	0.00
85) Perylene-d12	23.72	264	312696	20.00	ng/ul	0.01

## System Monitoring Compounds

3) 1,4-Dioxane-d8	3.29	96	1842	5.35	ng/uL	0.00
5) Phenol-d5	6.99	99	53445	24.10	ng/ul	0.00
7) Bis-(2-Chloroethyl)ether-d	7.16	67	33054	27.38	ng/ul	0.00
9) 2-Chlorophenol-d4	7.36	132	46196	26.59	ng/ul	0.00
13) 4-Methylphenol-d8	8.52	113	45504	24.49	ng/ul	0.00
19) Nitrobenzene-d5	8.99	128	24904	28.12	ng/ul	0.00
22) 2-Nitrophenol-d4	9.71	143	28518	28.43	ng/ul	0.00
26) 2,4-Dichlorophenol-d3	10.24	165	48233	26.22	ng/ul	0.00
29) 4-Chloroaniline-d4	10.77	131	71465	41.51	ng/ul	0.00
43) Dimethylphthalate-d6	13.87	166	172063	26.77	ng/ul	0.00
46) Acenaphthylene-d8	14.16	160	212086	27.81	ng/ul	0.00
51) 4-Nitrophenol-d4	14.66	143	30156	22.69	ng/ul	0.00
57) Fluorene-d10	15.46	176	154850	27.86	ng/ul	0.00
62) 4,6-Dinitro-2-methylphenol	15.58	200	25172	19.53	ng/ul	0.00
70) Anthracene-d10	17.31	188	253789	28.07	ng/ul	0.00
78) Pyrene-d10	19.60	212	305978	27.80	ng/ul	0.00
89) Benzo(a)pyrene-d12	23.56	264	478670	28.22	ng/ul	0.00

## Target Compounds

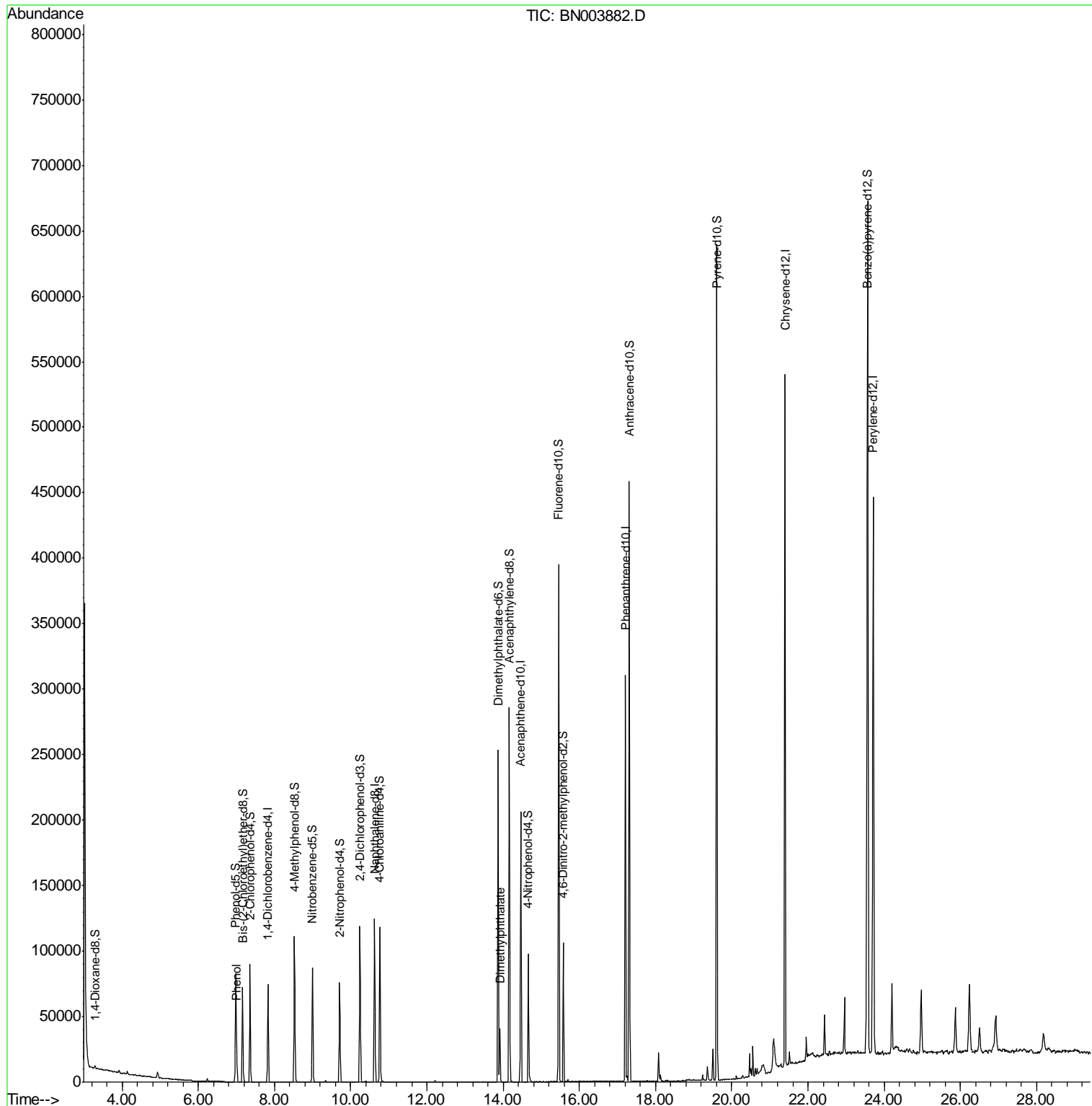
Target Compounds	R.T.	QIon	Response	Conc	Units	Ovalue
6) Phenol	7.01	94	9788	4.373	ng/ul	98
44) Dimethylphthalate	13.92	163	27746	4.422	ng/ul	98

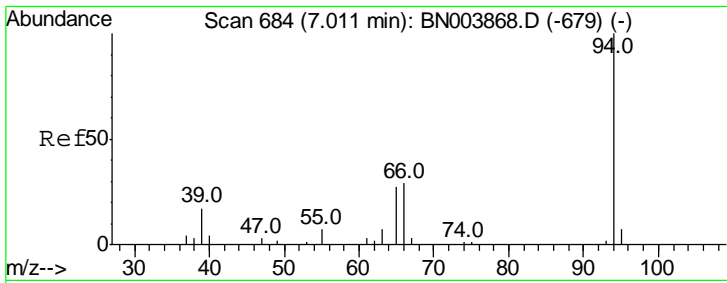
(#) = qualifier out of range (m) = manual integration (+) = signals summed

Data Path : Z:\SVOASRV\HPCHEM1\BNA N\DATA\BN121218\  
 Data File : BN003882.D  
 Acq On : 13 Dec 2018 09:24  
 Operator : JU/SJ  
 Sample : J6228-20  
 Misc :  
 ALS Vial : 31 Sample Multiplier: 1

Instrument :  
 BNA\_N  
 ClientSampled :  
 F9E59

Quant Time: Dec 13 10:41:34 2018  
 Quant Method : Z:\SVOASRV\HPCHEM1\BNA\_N\METHODS\SOM-EPA-BN121218MA.M  
 Quant Title : SVOA CALIBRATION  
 QLast Update : Thu Dec 13 06:00:44 2018  
 Response via : Initial Calibration

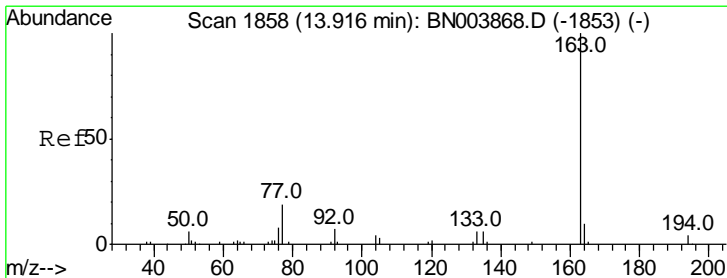
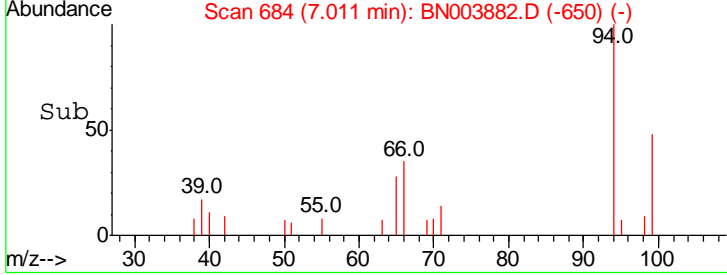
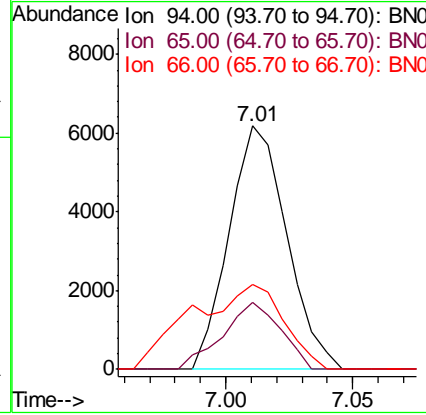
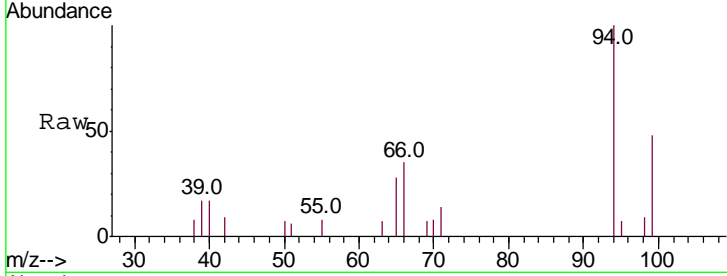




#6  
 Phenol  
 Concen: 4.373 ng/ul  
 RT: 7.01 min Scan# 684  
 Delta R.T. -0.00 min  
 Lab File: BN003882.D  
 Acq: 13 Dec 2018 09:24

**Instrument :**  
 BNA\_N  
**ClientSampled :**  
 F9E59

Tgt Ion	Resp	Lower	Upper
94	100		
65	27.7	21.2	31.8
66	34.8	26.9	40.3



#44  
 Dimethylphthalate  
 Concen: 4.422 ng/ul  
 RT: 13.92 min Scan# 1858  
 Delta R.T. -0.00 min  
 Lab File: BN003882.D  
 Acq: 13 Dec 2018 09:24

Tgt Ion	Resp	Lower	Upper
163	100		
194	4.5	3.4	5.0
164	10.7	7.9	11.9

