

Data Path : Z:\SVOASRV\HPCHEM1\BNA_N\DATA\BN121218\
 Data File : BN003854.D
 Acq On : 12 Dec 2018 17:03
 Operator : JU/SJ
 Sample : J6228-01
 Misc :
 ALS Vial : 4 Sample Multiplier: 1

Instrument :
 BNA_N
 ClientSampleId :
 F9E76

Integration Parameters: LSCINT.P

Integrator: RTE
 Smoothing : OFF Filtering: 5
 Sampling : 1 Min Area: 1 % of largest Peak
 Start Thrs: 0.2 Max Peaks: 100
 Stop Thrs : 0 Peak Location: TOP

If leading or trailing edge < 100 prefer < Baseline drop else tangent >
 Peak separation: 5

Method : Z:\SVOASRV\HPCHEM1\BNA_N\METHODS\SOM-EPA-BN121218MA.M
 Title : SVOA CALIBRATION

Signal : TIC

| peak # | R.T. min | first scan | max scan | last scan | PK TY | peak height | corr. area | corr. % max. | % of total |
|--------|----------|------------|----------|-----------|-------|-------------|------------|--------------|------------|
| 1 | 3.017 | 3 | 5 | 27 | rVB | 281110 | 408039 | 53.87% | 5.939% |
| 2 | 6.981 | 674 | 679 | 689 | rBV2 | 45235 | 86686 | 11.44% | 1.262% |
| 3 | 7.164 | 705 | 710 | 719 | rBB | 41011 | 63441 | 8.37% | 0.923% |
| 4 | 7.358 | 738 | 743 | 751 | rBB | 48126 | 72887 | 9.62% | 1.061% |
| 5 | 7.828 | 818 | 823 | 829 | rBB | 55280 | 84852 | 11.20% | 1.235% |
| 6 | 8.522 | 936 | 941 | 949 | rBB | 58408 | 89593 | 11.83% | 1.304% |
| 7 | 8.993 | 1016 | 1021 | 1029 | rBB | 49658 | 80246 | 10.59% | 1.168% |
| 8 | 9.710 | 1138 | 1143 | 1150 | rBB | 39109 | 59813 | 7.90% | 0.871% |
| 9 | 10.240 | 1228 | 1233 | 1241 | rBB | 60703 | 93683 | 12.37% | 1.364% |
| 10 | 10.628 | 1292 | 1299 | 1307 | rBB | 94988 | 152338 | 20.11% | 2.217% |
| 11 | 10.769 | 1317 | 1323 | 1333 | rBV | 56439 | 93640 | 12.36% | 1.363% |
| 12 | 13.363 | 1761 | 1764 | 1768 | rBB | 12378 | 14014 | 1.85% | 0.204% |
| 13 | 13.440 | 1774 | 1777 | 1781 | rBB | 8009 | 8106 | 1.07% | 0.118% |
| 14 | 13.869 | 1845 | 1850 | 1855 | rBV | 160471 | 208432 | 27.52% | 3.034% |
| 15 | 13.916 | 1855 | 1858 | 1864 | rVB | 50885 | 65133 | 8.60% | 0.948% |
| 16 | 14.163 | 1893 | 1900 | 1910 | rBV | 162997 | 234874 | 31.01% | 3.419% |
| 17 | 14.469 | 1946 | 1952 | 1959 | rVB2 | 155720 | 236401 | 31.21% | 3.441% |
| 18 | 14.663 | 1980 | 1985 | 1998 | rVB | 47994 | 73645 | 9.72% | 1.072% |
| 19 | 15.457 | 2115 | 2120 | 2129 | rBV | 239715 | 323447 | 42.70% | 4.708% |
| 20 | 15.581 | 2136 | 2141 | 2147 | rBV | 61919 | 76155 | 10.05% | 1.108% |
| 21 | 17.210 | 2412 | 2418 | 2424 | rBV2 | 230347 | 316843 | 41.83% | 4.612% |
| 22 | 17.310 | 2429 | 2435 | 2447 | rVB | 267685 | 367408 | 48.50% | 5.348% |
| 23 | 18.081 | 2562 | 2566 | 2573 | rBV | 15987 | 19203 | 2.53% | 0.280% |
| 24 | 19.363 | 2780 | 2784 | 2789 | rVB | 7561 | 9147 | 1.21% | 0.133% |
| 25 | 19.604 | 2819 | 2825 | 2832 | rVB2 | 360928 | 477986 | 63.10% | 6.957% |
| 26 | 21.398 | 3125 | 3130 | 3136 | rBV | 401873 | 490840 | 64.80% | 7.144% |
| 27 | 21.963 | 3223 | 3226 | 3230 | rVB | 11534 | 12436 | 1.64% | 0.181% |
| 28 | 22.439 | 3303 | 3307 | 3315 | rVB3 | 27466 | 39769 | 5.25% | 0.579% |
| 29 | 22.569 | 3326 | 3329 | 3335 | rVB2 | 11721 | 14241 | 1.88% | 0.207% |
| 30 | 22.957 | 3390 | 3395 | 3401 | rVB | 39143 | 56543 | 7.46% | 0.823% |
| 31 | 23.563 | 3489 | 3498 | 3509 | rVB | 359197 | 721622 | 95.26% | 10.503% |
| 32 | 23.716 | 3516 | 3524 | 3533 | rVB | 298189 | 573941 | 75.77% | 8.354% |
| 33 | 24.210 | 3601 | 3608 | 3616 | rBV | 53492 | 103274 | 13.63% | 1.503% |
| 34 | 24.980 | 3732 | 3739 | 3746 | rVB | 38622 | 83587 | 11.03% | 1.217% |

Data Path : Z:\SVOASRV\HPCHEM1\BNA N\DATA\BN121218\
Data File : BN003854.D
Acq On : 12 Dec 2018 17:03
Operator : JU/SJ
Sample : J6228-01
Misc :
ALS Vial : 4 Sample Multiplier: 1

Instrument :
BNA_N
ClientSampleId :
F9E76

Integration Parameters: LSCINT.P
Integrator: RTE
Smoothing : OFF Filtering: 5
Sampling : 1 Min Area: 1 % of largest Peak
Start Thrs: 0.2 Max Peaks: 100
Stop Thrs : 0 Peak Location: TOP

If leading or trailing edge < 100 prefer < Baseline drop else tangent >
Peak separation: 5

Method : Z:\SVOASRV\HPCHEM1\BNA_N\METHODS\SOM-EPA-BN121218MA.M
Title : SVOA CALIBRATION

| | | | | | | | | | |
|----|--------|------|------|------|------|--------|--------|---------|---------|
| 35 | 25.880 | 3885 | 3892 | 3901 | rVB | 29680 | 76112 | 10.05% | 1.108% |
| 36 | 26.245 | 3944 | 3954 | 3966 | rVB | 274394 | 757520 | 100.00% | 11.026% |
| 37 | 26.933 | 4064 | 4071 | 4085 | rVB3 | 21009 | 69672 | 9.20% | 1.014% |
| 38 | 28.327 | 4300 | 4308 | 4320 | rVB3 | 49100 | 154897 | 20.45% | 2.255% |

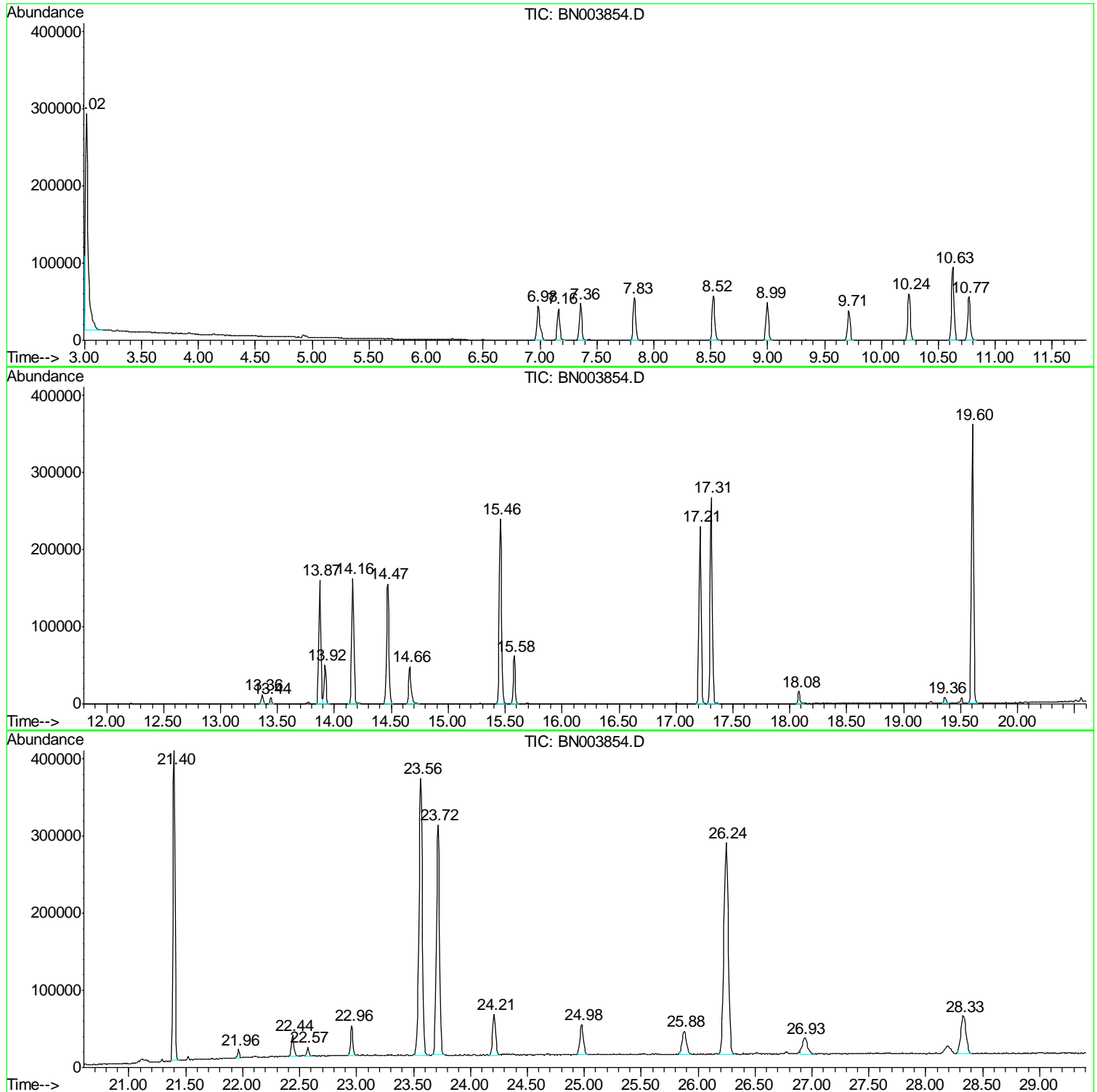
Sum of corrected areas: 6870466

Data Path : Z:\SVOASRV\HPCHEM1\BNA N\DATA\BN121218\
Data File : BN003854.D
Acq On : 12 Dec 2018 17:03
Operator : JU/SJ
Sample : J6228-01
Misc :
ALS Vial : 4 Sample Multiplier: 1

Instrument :
BNA_N
ClientSampleId :
F9E76

Quant Method : Z:\SVOASRV\HPCHEM1\BNA_N\METHODS\SOM-EPA-BN121218MA.M
Quant Title : SVOA CALIBRATION

TIC Library : C:\Database\NIST11.L
TIC Integration Parameters: LSCINT.P



Data Path : Z:\SVOASRV\HPCHEM1\BNA N\DATA\BN121218\
 Data File : BN003854.D
 Acq On : 12 Dec 2018 17:03
 Operator : JU/SJ
 Sample : J6228-01
 Misc :
 ALS Vial : 4 Sample Multiplier: 1

Instrument :
 BNA_N
 ClientSampleID :
 F9E76

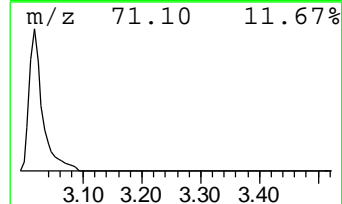
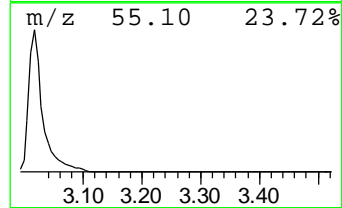
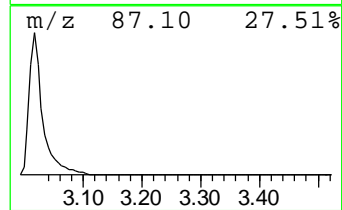
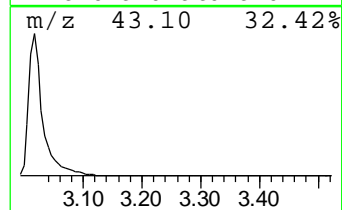
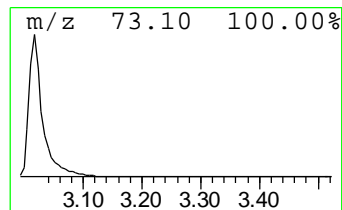
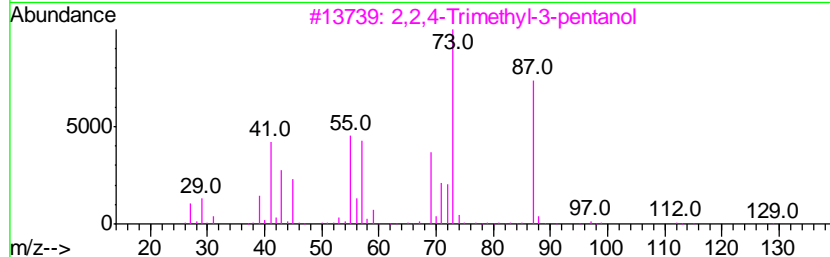
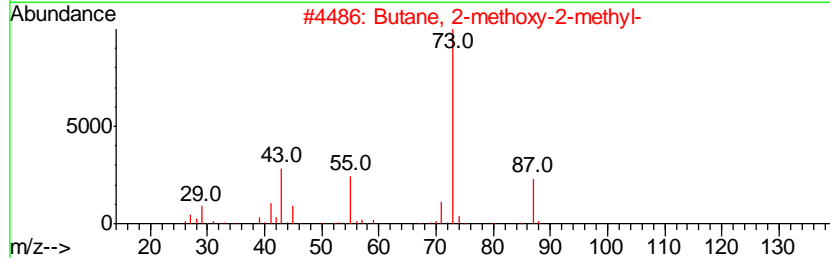
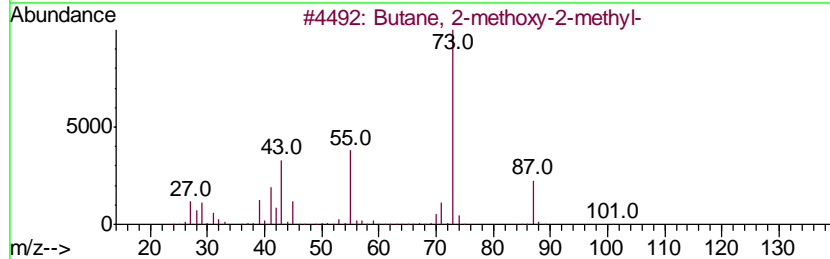
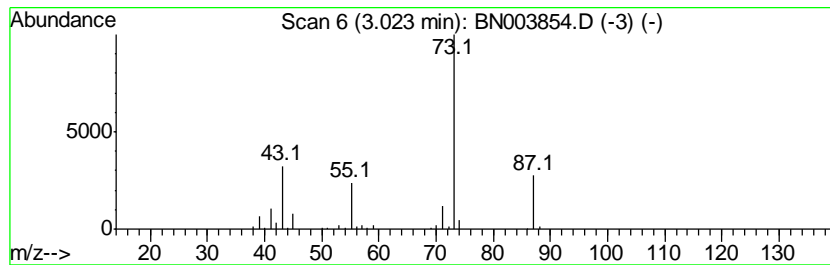
Quant Method : Z:\SVOASRV\HPCHEM1\BNA_N\METHODS\SOM-EPA-BN121218MA.M
 Quant Title : SVOA CALIBRATION

TIC Library : C:\Database\NIST11.L
 TIC Integration Parameters: LSCINT.P

 Peak Number 1 Butane, 2-methoxy-2-methyl- Concentration Rank 1

| R.T. | EstConc | Area | Relative to ISTD | R.T. |
|------|-------------|--------|------------------------|------|
| 3.02 | 96.18 ng/ul | 408039 | 1,4-Dichlorobenzene-d4 | 7.83 |

| Hit# | of | Tentative ID | MW | MolForm | CAS# | Qual |
|------|----|-------------------------------------|-----|---------|--------------|------|
| 1 | 5 | Butane, 2-methoxy-2-methyl- | 102 | C6H14O | 000994-05-8 | 83 |
| 2 | | Butane, 2-methoxy-2-methyl- | 102 | C6H14O | 000994-05-8 | 78 |
| 3 | | 2,2,4-Trimethyl-3-pentanol | 130 | C8H18O | 005162-48-1 | 39 |
| 4 | | 1,3-Dioxolane, 2-methyl- | 88 | C4H8O2 | 000497-26-7 | 25 |
| 5 | | 1-(2-Methoxyethoxy)-2-methyl-2-p... | 162 | C8H18O3 | 1000364-24-4 | 25 |



Data Path : Z:\SVOASRV\HPCHEM1\BNA N\DATA\BN121218\
 Data File : BN003854.D
 Acq On : 12 Dec 2018 17:03
 Operator : JU/SJ
 Sample : J6228-01
 Misc :
 ALS Vial : 4 Sample Multiplier: 1

Instrument :
 BNA_N
 ClientSampleID :
 F9E76

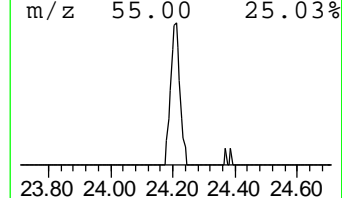
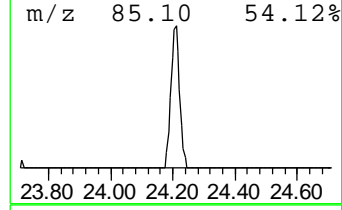
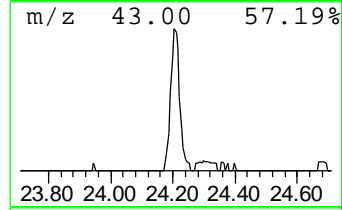
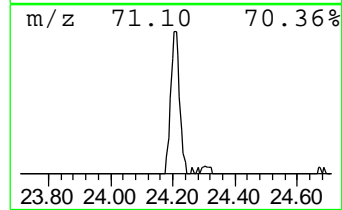
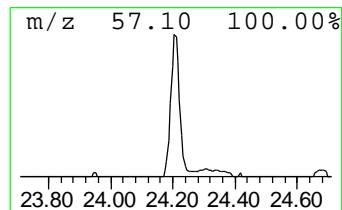
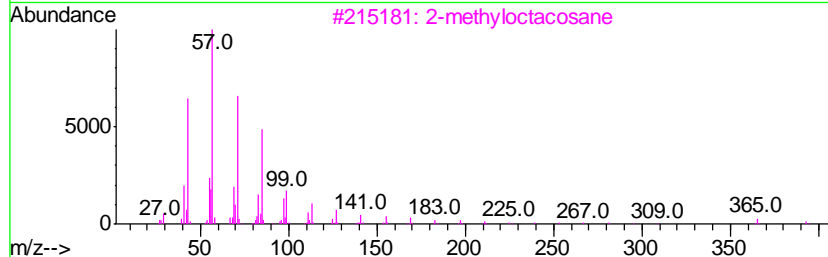
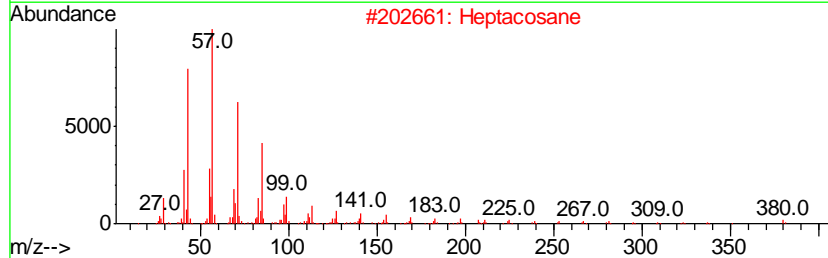
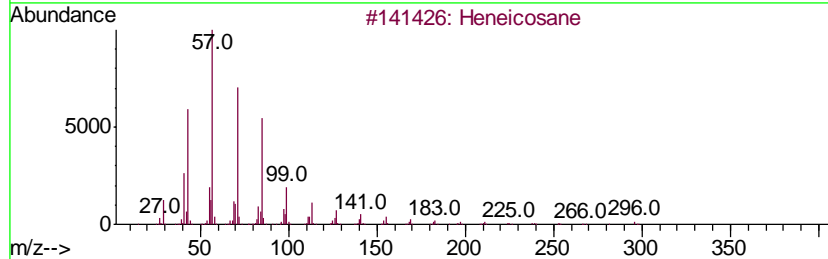
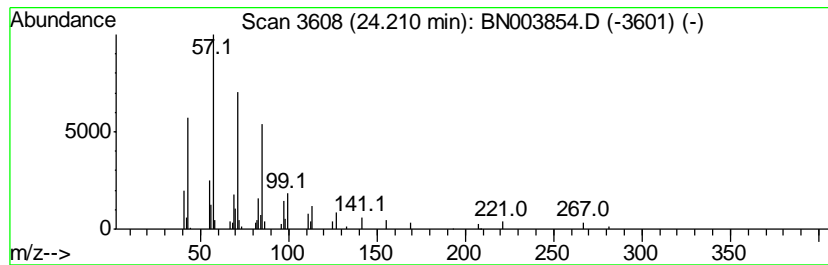
Quant Method : Z:\SVOASRV\HPCHEM1\BNA_N\METHODS\SOM-EPA-BN121218MA.M
 Quant Title : SVOA CALIBRATION

TIC Library : C:\Database\NIST11.L
 TIC Integration Parameters: LSCINT.P

 Peak Number 2 (DEL) Alkane: Straight-Chai... Concentration Rank 4

| R.T. | EstConc | Area | Relative to ISTD | R.T. |
|-------|------------|--------|------------------|-------|
| 24.21 | 3.60 ng/ul | 103274 | Perylene-d12 | 23.72 |

| Hit# | of | Tentative ID | MW | MolForm | CAS# | Qual |
|------|----|-----------------------|-----|---------|--------------|------|
| 1 | 5 | Heneicosane | 296 | C21H44 | 000629-94-7 | 91 |
| 2 | | Heptacosane | 380 | C27H56 | 000593-49-7 | 91 |
| 3 | | 2-methyloctacosane | 408 | C29H60 | 1000376-72-8 | 91 |
| 4 | | Heptadecane, 9-octyl- | 352 | C25H52 | 007225-64-1 | 91 |
| 5 | | Tetratetracontane | 619 | C44H90 | 007098-22-8 | 91 |



Data Path : Z:\SVOASRV\HPCHEM1\BNA N\DATA\BN121218\
 Data File : BN003854.D
 Acq On : 12 Dec 2018 17:03
 Operator : JU/SJ
 Sample : J6228-01
 Misc :
 ALS Vial : 4 Sample Multiplier: 1

Instrument :
 BNA_N
 ClientSampled :
 F9E76

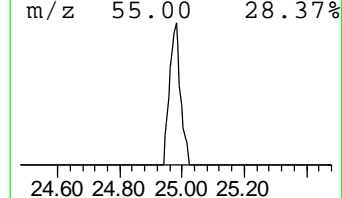
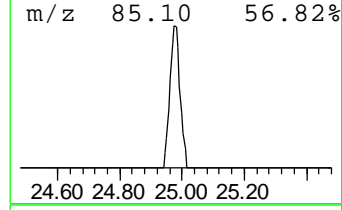
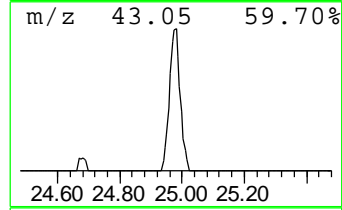
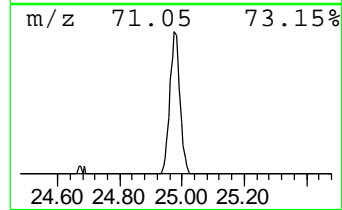
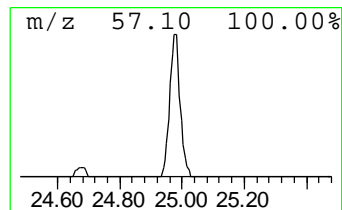
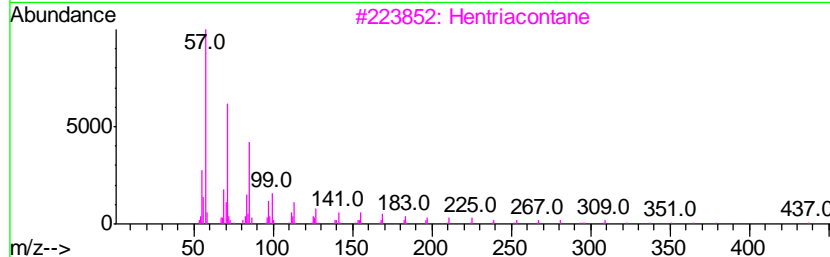
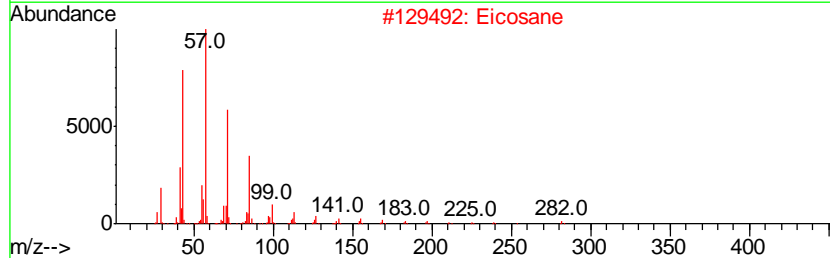
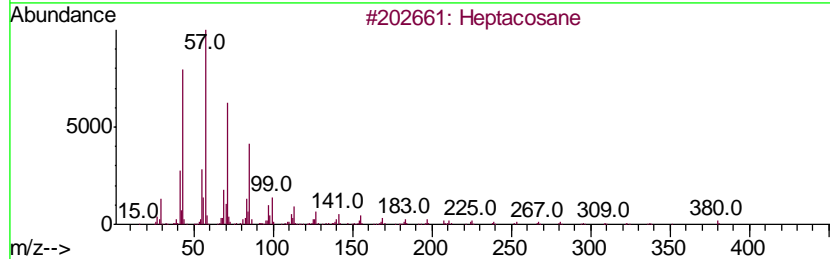
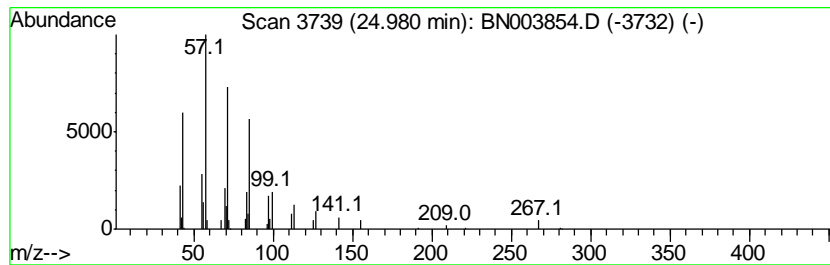
Quant Method : Z:\SVOASRV\HPCHEM1\BNA_N\METHODS\SOM-EPA-BN121218MA.M
 Quant Title : SVOA CALIBRATION

TIC Library : C:\Database\NIST11.L
 TIC Integration Parameters: LSCINT.P

 Peak Number 3 (DEL) Alkane: Straight-Chai... Concentration Rank 5

| R.T. | EstConc | Area | Relative to ISTD | R.T. |
|-------|------------|-------|------------------|-------|
| 24.98 | 2.91 ng/ul | 83587 | Perylene-d12 | 23.72 |

| Hit# | of | Tentative ID | MW | MolForm | CAS# | Qual |
|------|----|----------------|-----|---------|-------------|------|
| 1 | 5 | Heptacosane | 380 | C27H56 | 000593-49-7 | 91 |
| 2 | | Eicosane | 282 | C20H42 | 000112-95-8 | 91 |
| 3 | | Hentriacontane | 437 | C31H64 | 000630-04-6 | 91 |
| 4 | | Hexacosane | 366 | C26H54 | 000630-01-3 | 91 |
| 5 | | Heneicosane | 296 | C21H44 | 000629-94-7 | 91 |



Data Path : Z:\SVOASRV\HPCHEM1\BNA N\DATA\BN121218\
 Data File : BN003854.D
 Acq On : 12 Dec 2018 17:03
 Operator : JU/SJ
 Sample : J6228-01
 Misc :
 ALS Vial : 4 Sample Multiplier: 1

Instrument :
 BNA_N
 ClientSampled :
 F9E76

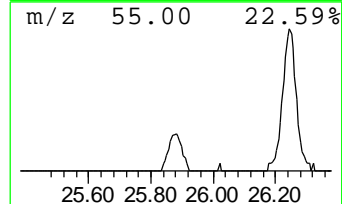
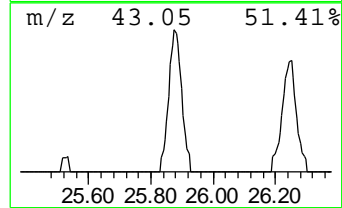
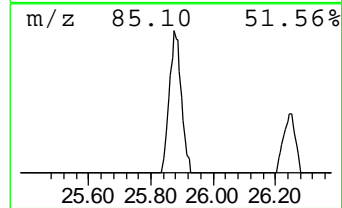
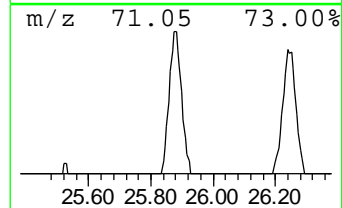
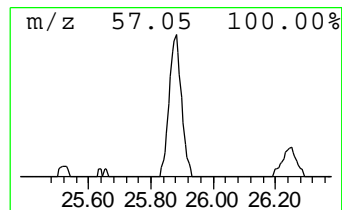
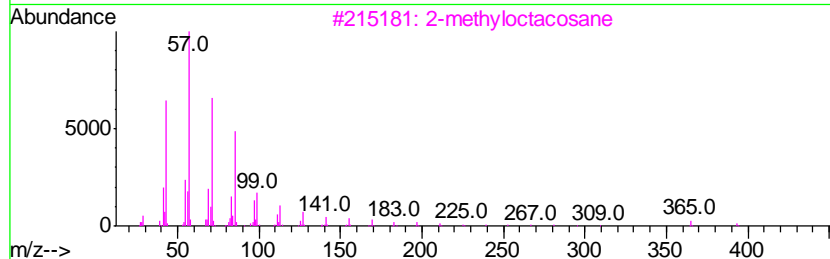
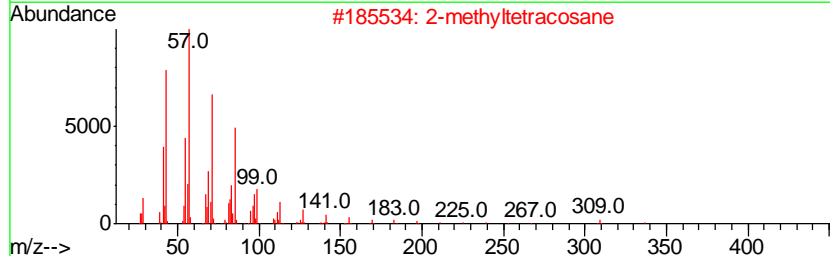
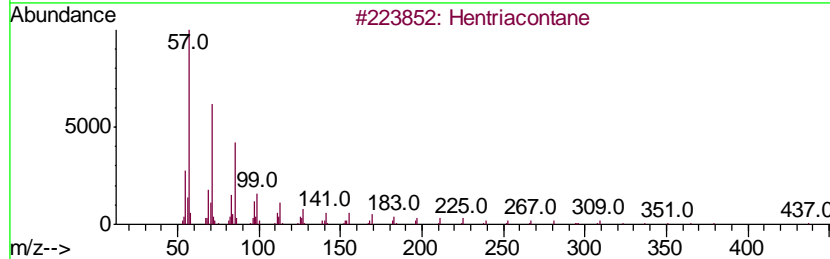
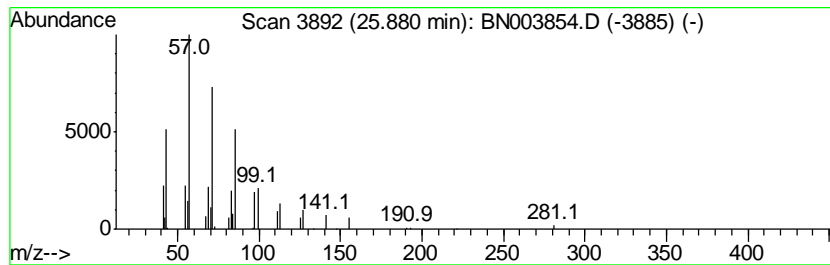
Quant Method : Z:\SVOASRV\HPCHEM1\BNA_N\METHODS\SOM-EPA-BN121218MA.M
 Quant Title : SVOA CALIBRATION

TIC Library : C:\Database\NIST11.L
 TIC Integration Parameters: LSCINT.P

 Peak Number 4 (DEL) Alkane: Straight-Chai... Concentration Rank 6

| R.T. | EstConc | Area | Relative to ISTD | R.T. |
|-------|------------|-------|------------------|-------|
| 25.88 | 2.65 ng/ul | 76112 | Perylene-d12 | 23.72 |

| Hit# | of | Tentative ID | MW | MolForm | CAS# | Qual |
|------|----|-------------------------------------|-----|-----------|--------------|------|
| 1 | 5 | Hentriacontane | 437 | C31H64 | 000630-04-6 | 91 |
| 2 | | 2-methyltetracosane | 352 | C25H52 | 1000376-72-6 | 91 |
| 3 | | 2-methyloctacosane | 408 | C29H60 | 1000376-72-8 | 90 |
| 4 | | Sulfurous acid, butyl dodecyl ester | 306 | C16H34O3S | 1000309-17-9 | 90 |
| 5 | | Hexatriacontane | 507 | C36H74 | 000630-06-8 | 90 |



Data Path : Z:\SVOASRV\HPCHEM1\BNA N\DATA\BN121218\
 Data File : BN003854.D
 Acq On : 12 Dec 2018 17:03
 Operator : JU/SJ
 Sample : J6228-01
 Misc :
 ALS Vial : 4 Sample Multiplier: 1

Instrument :
 BNA_N
 ClientSampled :
 F9E76

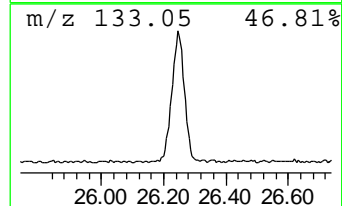
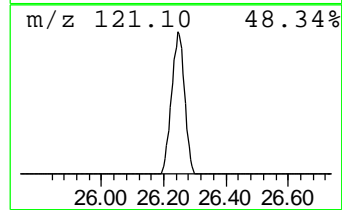
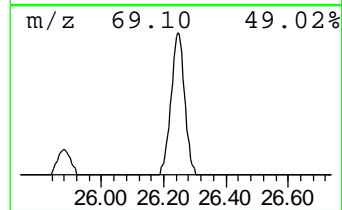
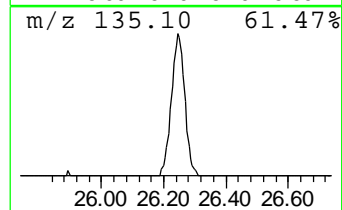
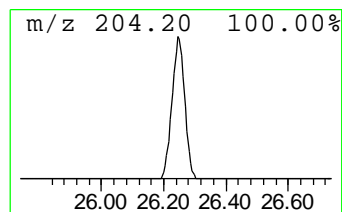
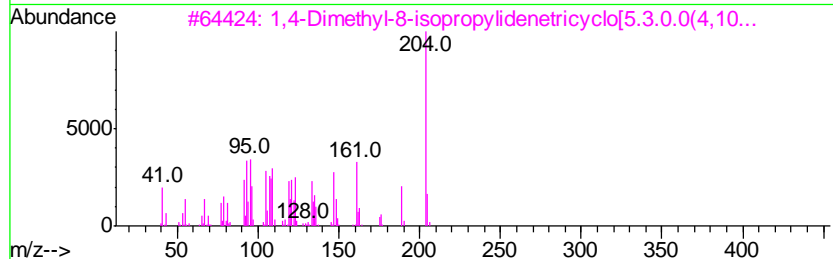
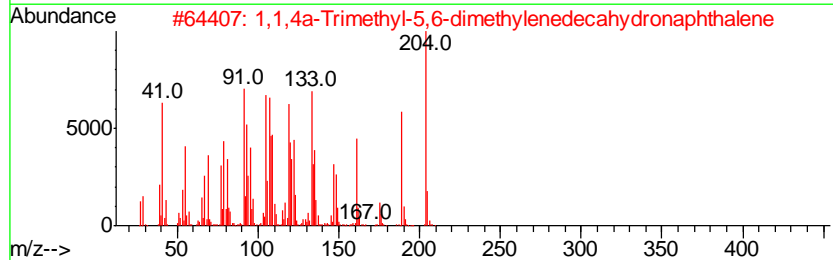
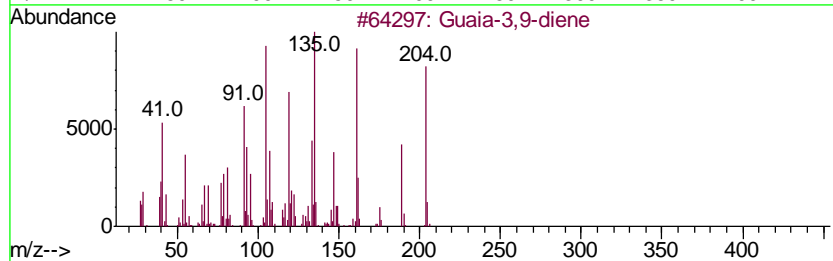
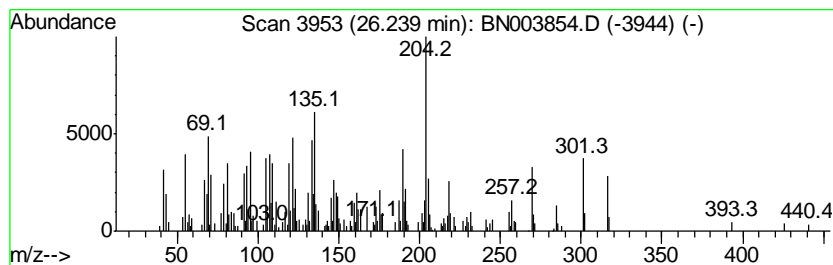
Quant Method : Z:\SVOASRV\HPCHEM1\BNA_N\METHODS\SOM-EPA-BN121218MA.M
 Quant Title : SVOA CALIBRATION

TIC Library : C:\Database\NIST11.L
 TIC Integration Parameters: LSCINT.P

 Peak Number 5 Guaia-3,9-diene Concentration Rank 2

| R.T. | EstConc | Area | Relative to ISTD | R.T. |
|-------|-------------|--------|------------------|-------|
| 26.24 | 26.40 ng/ul | 757520 | Perylene-d12 | 23.72 |

| Hit# | of | Tentative ID | MW | MolForm | CAS# | Qual |
|------|----|-------------------------------------|-----|---------|--------------|------|
| 1 | 5 | Guaia-3,9-diene | 204 | C15H24 | 000489-83-8 | 53 |
| 2 | | 1,1,4a-Trimethyl-5,6-dimethylene... | 204 | C15H24 | 1000193-60-8 | 49 |
| 3 | | 1,4-Dimethyl-8-isopropylidenetri... | 204 | C15H24 | 1000140-07-7 | 46 |
| 4 | | 2,5,5,8a-Tetramethyl-6,7,8,8a-te... | 204 | C14H20O | 124957-09-1 | 45 |
| 5 | | 1H-Cycloprop[elazulene, 1a,2,3,4... | 204 | C15H24 | 000489-40-7 | 45 |



Data Path : Z:\SVOASRV\HPCHEM1\BNA N\DATA\BN121218\
 Data File : BN003854.D
 Acq On : 12 Dec 2018 17:03
 Operator : JU/SJ
 Sample : J6228-01
 Misc :
 ALS Vial : 4 Sample Multiplier: 1

Instrument :
 BNA_N
 ClientSampleID :
 F9E76

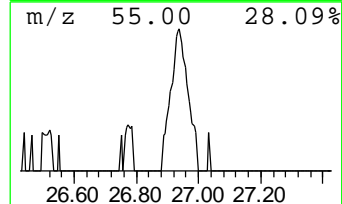
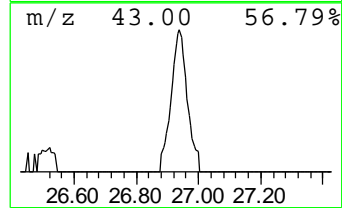
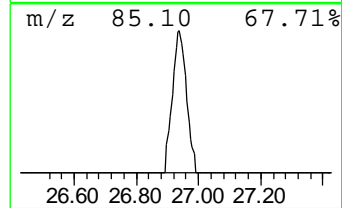
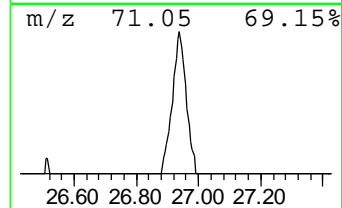
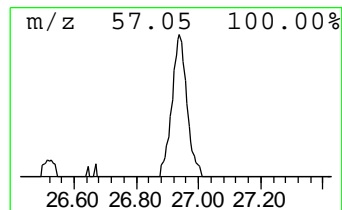
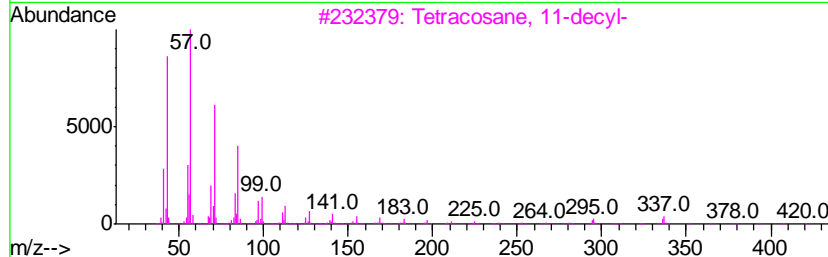
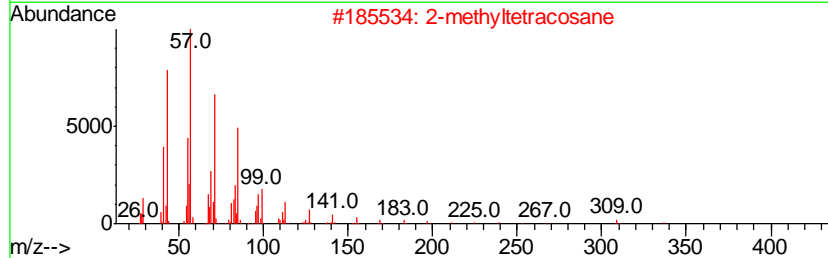
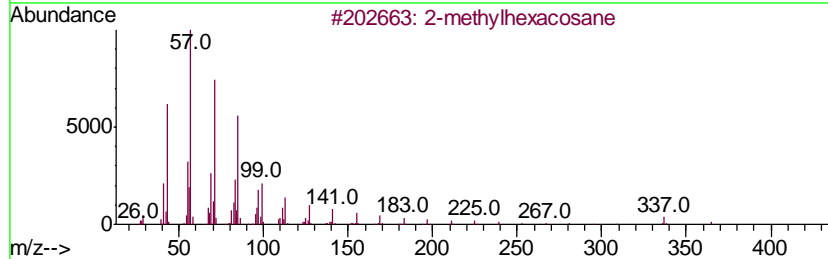
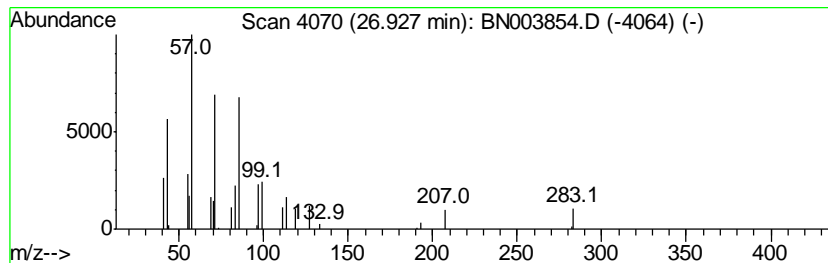
Quant Method : Z:\SVOASRV\HPCHEM1\BNA_N\METHODS\SOM-EPA-BN121218MA.M
 Quant Title : SVOA CALIBRATION

TIC Library : C:\Database\NIST11.L
 TIC Integration Parameters: LSCINT.P

 Peak Number 6 (DEL) Alkane: Straight-Chai... Concentration Rank 7

| R.T. | EstConc | Area | Relative to ISTD | R.T. |
|-------|------------|-------|------------------|-------|
| 26.93 | 2.43 ng/ul | 69672 | Perylene-d12 | 23.72 |

| Hit# | of | Tentative ID | MW | MolForm | CAS# | Qual |
|------|----|-------------------------------------|-----|-----------|--------------|------|
| 1 | 5 | 2-methylhexacosane | 380 | C27H56 | 1000376-72-7 | 72 |
| 2 | | 2-methyltetracosane | 352 | C25H52 | 1000376-72-6 | 72 |
| 3 | | Tetracosane, 11-decyl- | 479 | C34H70 | 055429-84-0 | 64 |
| 4 | | Sulfurous acid, butyl dodecyl ester | 306 | C16H34O3S | 1000309-17-9 | 64 |
| 5 | | Sulfurous acid, butyl tridecyl e... | 320 | C17H36O3S | 1000309-18-0 | 64 |



Data Path : Z:\SVOASRV\HPCHEM1\BNA N\DATA\BN121218\
 Data File : BN003854.D
 Acq On : 12 Dec 2018 17:03
 Operator : JU/SJ
 Sample : J6228-01
 Misc :
 ALS Vial : 4 Sample Multiplier: 1

Instrument :
 BNA_N
 ClientSampleID :
 F9E76

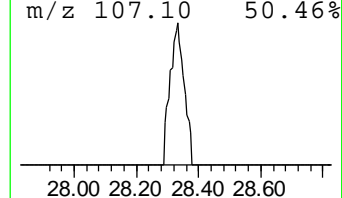
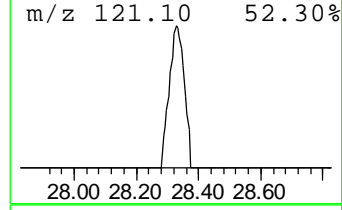
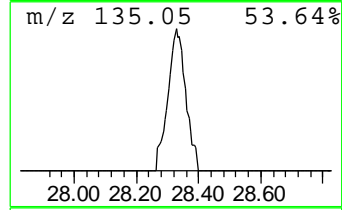
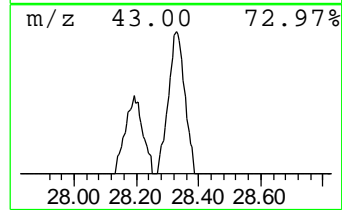
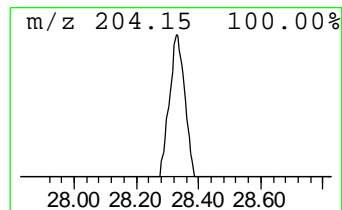
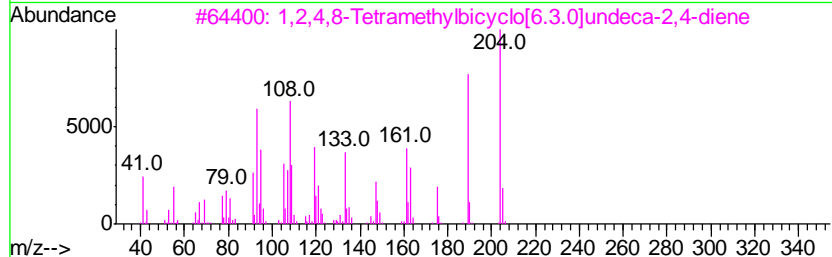
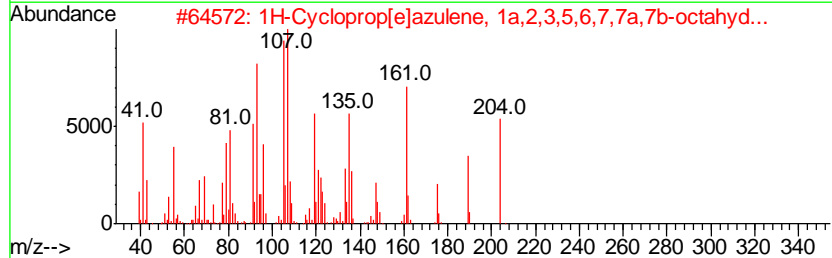
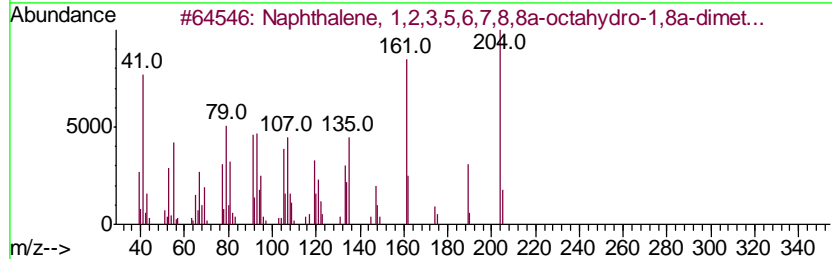
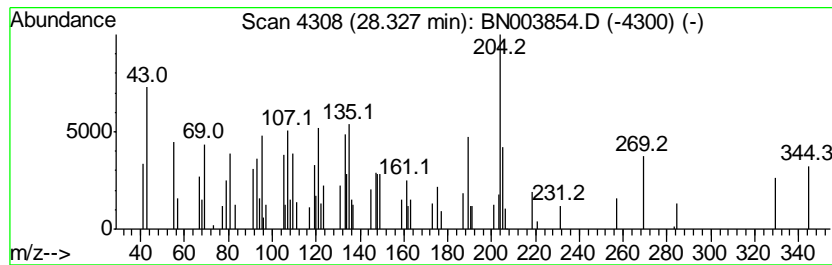
Quant Method : Z:\SVOASRV\HPCHEM1\BNA_N\METHODS\SOM-EPA-BN121218MA.M
 Quant Title : SVOA CALIBRATION

TIC Library : C:\Database\NIST11.L
 TIC Integration Parameters: LSCINT.P

 Peak Number 7 Naphthalene, 1,2,3,5,6,7,8,... Concentration Rank 3

| R.T. | EstConc | Area | Relative to ISTD | R.T. |
|-------|------------|--------|------------------|-------|
| 28.33 | 5.40 ng/ul | 154897 | Perylene-d12 | 23.72 |

| Hit# | of | Tentative ID | MW | MolForm | CAS# | Qual |
|------|----|-------------------------------------|-----|---------|--------------|------|
| 1 | 5 | Naphthalene, 1,2,3,5,6,7,8,8a-oc... | 204 | C15H24 | 004630-07-3 | 60 |
| 2 | | 1H-Cycloprop[elazulene, 1a,2,3,5... | 204 | C15H24 | 021747-46-6 | 55 |
| 3 | | 1,2,4,8-Tetramethylbicyclo[6.3.0... | 204 | C15H24 | 137235-51-9 | 55 |
| 4 | | 1,1,4a-Trimethyl-5,6-dimethylene... | 204 | C15H24 | 1000193-60-8 | 52 |
| 5 | | Naphthalene, decahydro-4a-methyl... | 204 | C15H24 | 017066-67-0 | 45 |



Data Path : Z:\SVOASRV\HPCHEM1\BNA_N\DATA\BN121218\
Data File : BN003854.D
Acq On : 12 Dec 2018 17:03
Operator : JU/SJ
Sample : J6228-01
Misc :
ALS Vial : 4 Sample Multiplier: 1

Instrument :
BNA_N
ClientSampleId :
F9E76

Quant Method : Z:\SVOASRV\HPCHEM1\BNA_N\METHODS\SOM-EPA-BN121218MA.M
Quant Title : SVOA CALIBRATION

TIC Library : C:\Database\NIST11.L
TIC Integration Parameters: LSCINT.P

| TIC Top Hit name | RT | EstConc | Units | Response | --Internal Standard-- | | | |
|----------------------|-------|---------|-------|----------|-----------------------|-------|--------|------|
| | | | | | # | RT | Resp | Conc |
| Butane, 2-methoxy... | 3.02 | 96.2 | ng/ul | 408039 | 1 | 7.83 | 84852 | 20.0 |
| (DEL) Alkane: Str... | 24.21 | 3.6 | ng/ul | 103274 | 6 | 23.72 | 573941 | 20.0 |
| (DEL) Alkane: Str... | 24.98 | 2.9 | ng/ul | 83587 | 6 | 23.72 | 573941 | 20.0 |
| (DEL) Alkane: Str... | 25.88 | 2.6 | ng/ul | 76112 | 6 | 23.72 | 573941 | 20.0 |
| Guaia-3,9-diene | 26.24 | 26.4 | ng/ul | 757520 | 6 | 23.72 | 573941 | 20.0 |
| (DEL) Alkane: Str... | 26.93 | 2.4 | ng/ul | 69672 | 6 | 23.72 | 573941 | 20.0 |
| Naphthalene, 1,2,... | 28.33 | 5.4 | ng/ul | 154897 | 6 | 23.72 | 573941 | 20.0 |