

Data Path : Z:\SVOASRV\HPCHEM1\BNA\_N\DATA\BN121218\  
 Data File : BN003858.D  
 Acq On : 12 Dec 2018 19:24  
 Operator : JU/SJ  
 Sample : J6228-11  
 Misc :  
 ALS Vial : 8 Sample Multiplier: 1

Instrument :  
 BNA\_N  
 ClientSampleId :  
 F9E90

## Integration Parameters: LSCINT.P

Integrator: RTE  
 Smoothing : OFF Filtering: 5  
 Sampling : 1 Min Area: 1 % of largest Peak  
 Start Thrs: 0.2 Max Peaks: 100  
 Stop Thrs : 0 Peak Location: TOP

If leading or trailing edge < 100 prefer < Baseline drop else tangent >  
 Peak separation: 5

Method : Z:\SVOASRV\HPCHEM1\BNA\_N\METHODS\SOM-EPA-BN121218MA.M  
 Title : SVOA CALIBRATION

Signal : TIC

| peak # | R.T. min | first scan | max scan | last scan | PK TY | peak height | corr. area | corr. % max. | % of total |
|--------|----------|------------|----------|-----------|-------|-------------|------------|--------------|------------|
| 1      | 3.017    | 3          | 5        | 27        | rVB   | 308193      | 489225     | 52.83%       | 6.234%     |
| 2      | 6.499    | 592        | 597      | 603       | rVB   | 12908       | 17978      | 1.94%        | 0.229%     |
| 3      | 6.987    | 673        | 680      | 690       | rBB2  | 62212       | 120350     | 13.00%       | 1.533%     |
| 4      | 7.164    | 705        | 710      | 719       | rBB   | 51620       | 81391      | 8.79%        | 1.037%     |
| 5      | 7.358    | 738        | 743      | 750       | rBB   | 65132       | 99275      | 10.72%       | 1.265%     |
| 6      | 7.834    | 818        | 824      | 830       | rBB   | 60319       | 93077      | 10.05%       | 1.186%     |
| 7      | 8.528    | 936        | 942      | 950       | rBB   | 78053       | 124701     | 13.47%       | 1.589%     |
| 8      | 8.999    | 1016       | 1022     | 1029      | rBB   | 63544       | 104071     | 11.24%       | 1.326%     |
| 9      | 9.716    | 1138       | 1144     | 1150      | rBB   | 51588       | 80426      | 8.69%        | 1.025%     |
| 10     | 10.240   | 1228       | 1233     | 1242      | rBB   | 83770       | 132719     | 14.33%       | 1.691%     |
| 11     | 10.628   | 1292       | 1299     | 1307      | rBB   | 102972      | 165019     | 17.82%       | 2.103%     |
| 12     | 10.769   | 1317       | 1323     | 1337      | rBB   | 77117       | 127945     | 13.82%       | 1.630%     |
| 13     | 13.363   | 1760       | 1764     | 1769      | rBB   | 30954       | 39233      | 4.24%        | 0.500%     |
| 14     | 13.440   | 1773       | 1777     | 1782      | rBB   | 17562       | 21876      | 2.36%        | 0.279%     |
| 15     | 13.869   | 1845       | 1850     | 1854      | rBV   | 192043      | 263109     | 28.41%       | 3.353%     |
| 16     | 13.916   | 1854       | 1858     | 1864      | rVB2  | 106976      | 144538     | 15.61%       | 1.842%     |
| 17     | 14.163   | 1894       | 1900     | 1906      | rBV   | 217778      | 314632     | 33.98%       | 4.009%     |
| 18     | 14.469   | 1946       | 1952     | 1958      | rVB2  | 168884      | 254119     | 27.44%       | 3.238%     |
| 19     | 14.657   | 1979       | 1984     | 1999      | rBV   | 71568       | 110990     | 11.99%       | 1.414%     |
| 20     | 15.457   | 2114       | 2120     | 2128      | rVB   | 302181      | 420762     | 45.44%       | 5.361%     |
| 21     | 15.581   | 2136       | 2141     | 2146      | rBV   | 85767       | 107362     | 11.59%       | 1.368%     |
| 22     | 17.210   | 2412       | 2418     | 2426      | rVB   | 255930      | 340112     | 36.73%       | 4.334%     |
| 23     | 17.310   | 2429       | 2435     | 2447      | rVB   | 349707      | 481923     | 52.04%       | 6.141%     |
| 24     | 18.081   | 2562       | 2566     | 2577      | rBV   | 36908       | 49803      | 5.38%        | 0.635%     |
| 25     | 19.157   | 2746       | 2749     | 2753      | rBV   | 12468       | 11658      | 1.26%        | 0.149%     |
| 26     | 19.357   | 2780       | 2783     | 2793      | rBV   | 23333       | 35024      | 3.78%        | 0.446%     |
| 27     | 19.504   | 2802       | 2808     | 2814      | rVB2  | 23071       | 27400      | 2.96%        | 0.349%     |
| 28     | 19.604   | 2819       | 2825     | 2833      | rVB   | 482914      | 635807     | 68.66%       | 8.101%     |
| 29     | 20.557   | 2983       | 2987     | 2992      | rVB   | 20053       | 21499      | 2.32%        | 0.274%     |
| 30     | 21.110   | 3072       | 3081     | 3093      | rBV5  | 22548       | 70431      | 7.61%        | 0.897%     |
| 31     | 21.392   | 3124       | 3129     | 3135      | rBV   | 423410      | 522162     | 56.39%       | 6.653%     |
| 32     | 21.957   | 3221       | 3225     | 3229      | rBV   | 18768       | 21262      | 2.30%        | 0.271%     |
| 33     | 22.433   | 3301       | 3306     | 3311      | rBV   | 28340       | 38535      | 4.16%        | 0.491%     |
| 34     | 22.569   | 3326       | 3329     | 3334      | rVB   | 8635        | 10108      | 1.09%        | 0.129%     |

Data Path : Z:\SVOASRV\HPCHEM1\BNA\_N\DATA\BN121218\  
Data File : BN003858.D  
Acq On : 12 Dec 2018 19:24  
Operator : JU/SJ  
Sample : J6228-11  
Misc :  
ALS Vial : 8 Sample Multiplier: 1

Instrument :  
BNA\_N  
ClientSampleId :  
F9E90

Integration Parameters: LSCINT.P  
Integrator: RTE  
Smoothing : OFF Filtering: 5  
Sampling : 1 Min Area: 1 % of largest Peak  
Start Thrs: 0.2 Max Peaks: 100  
Stop Thrs : 0 Peak Location: TOP

If leading or trailing edge < 100 prefer < Baseline drop else tangent >  
Peak separation: 5

Method : Z:\SVOASRV\HPCHEM1\BNA\_N\METHODS\SOM-EPA-BN121218MA.M  
Title : SVOA CALIBRATION

|    |        |      |      |      |      |        |        |         |         |
|----|--------|------|------|------|------|--------|--------|---------|---------|
| 35 | 22.951 | 3388 | 3394 | 3403 | rBV  | 60684  | 88714  | 9.58%   | 1.130%  |
| 36 | 23.557 | 3487 | 3497 | 3505 | rBV  | 453080 | 926014 | 100.00% | 11.799% |
| 37 | 23.710 | 3515 | 3523 | 3532 | rVB  | 311966 | 598634 | 64.65%  | 7.628%  |
| 38 | 23.869 | 3547 | 3550 | 3554 | rVB4 | 7009   | 10401  | 1.12%   | 0.133%  |
| 39 | 24.198 | 3600 | 3606 | 3614 | rBV  | 69586  | 129704 | 14.01%  | 1.653%  |
| 40 | 24.969 | 3731 | 3737 | 3746 | rVB  | 41832  | 89130  | 9.63%   | 1.136%  |
| 41 | 25.439 | 3811 | 3817 | 3825 | rBV6 | 12327  | 30999  | 3.35%   | 0.395%  |
| 42 | 25.868 | 3883 | 3890 | 3899 | rVB2 | 47125  | 114726 | 12.39%  | 1.462%  |
| 43 | 26.239 | 3944 | 3953 | 3964 | rVB3 | 76277  | 207992 | 22.46%  | 2.650%  |
| 44 | 26.921 | 4065 | 4069 | 4082 | rVB2 | 23929  | 73279  | 7.91%   | 0.934%  |

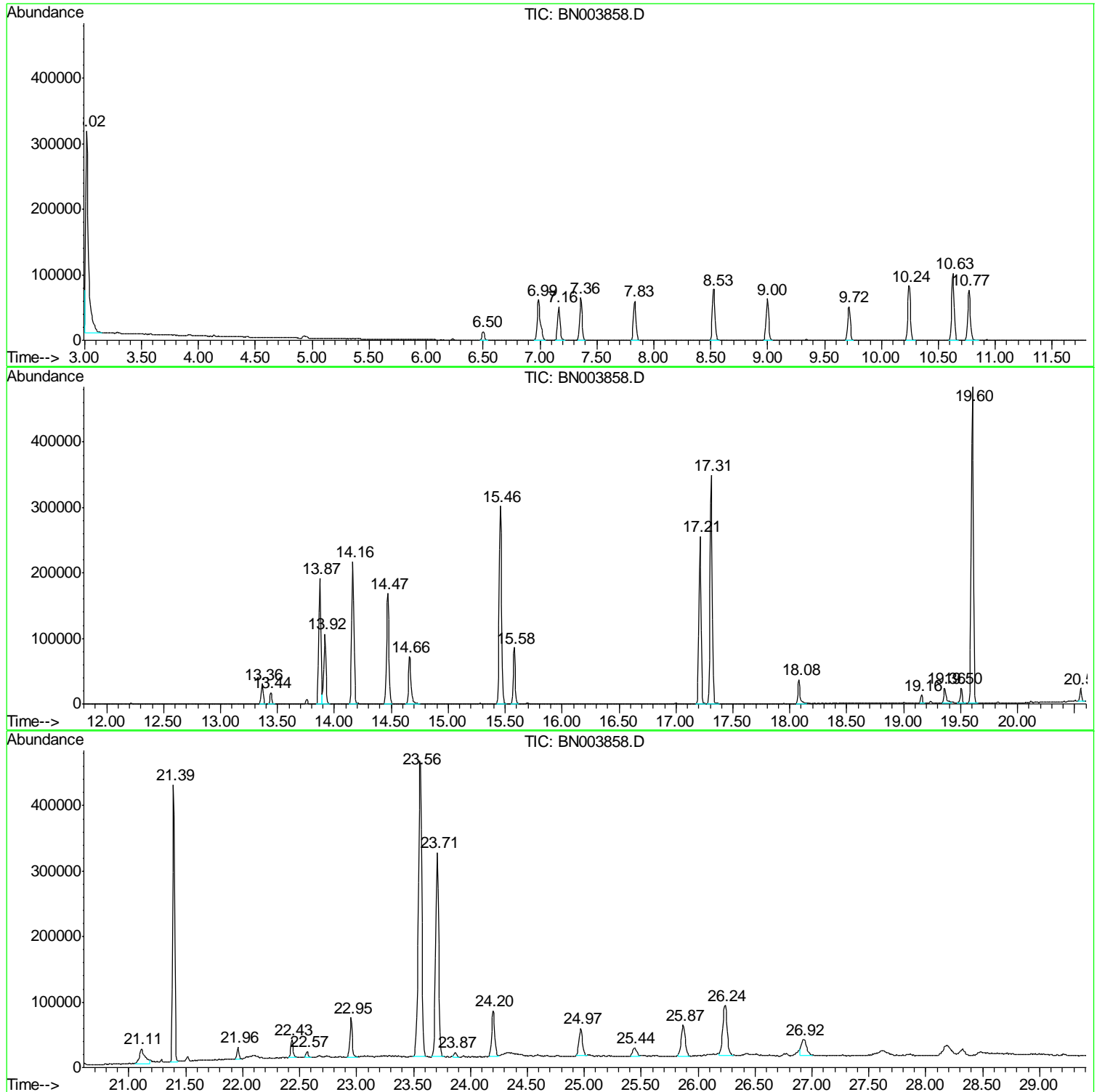
Sum of corrected areas: 7848115

Data Path : Z:\SVOASRV\HPCHEM1\BNA N\DATA\BN121218\  
Data File : BN003858.D  
Acq On : 12 Dec 2018 19:24  
Operator : JU/SJ  
Sample : J6228-11  
Misc :  
ALS Vial : 8 Sample Multiplier: 1

Instrument :  
BNA\_N  
ClientSampleId :  
F9E90

Quant Method : Z:\SVOASRV\HPCHEM1\BNA\_N\METHODS\SOM-EPA-BN121218MA.M  
Quant Title : SVOA CALIBRATION

TIC Library : C:\Database\NIST11.L  
TIC Integration Parameters: LSCINT.P



Data Path : Z:\SVOASRV\HPCHEM1\BNA N\DATA\BN121218\  
 Data File : BN003858.D  
 Acq On : 12 Dec 2018 19:24  
 Operator : JU/SJ  
 Sample : J6228-11  
 Misc :  
 ALS Vial : 8 Sample Multiplier: 1

Instrument :  
 BNA\_N  
 ClientSampleID :  
 F9E90

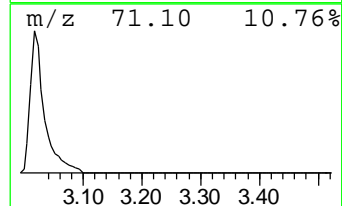
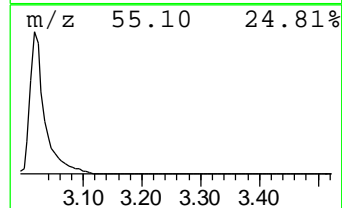
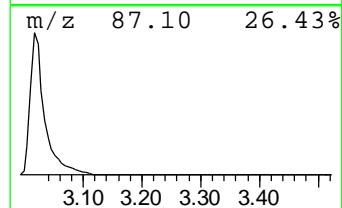
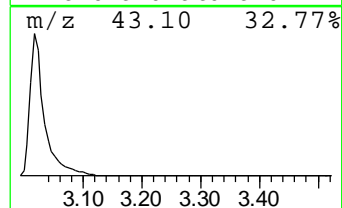
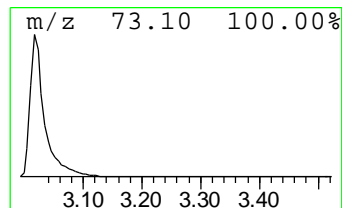
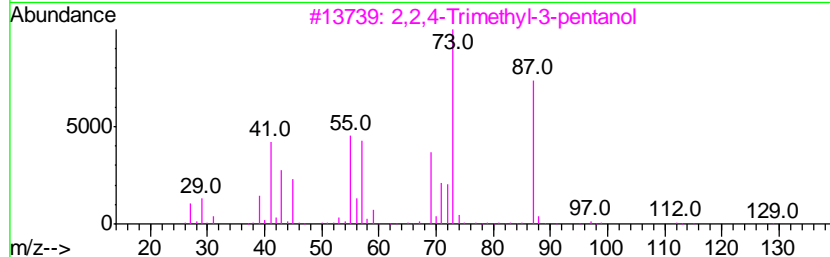
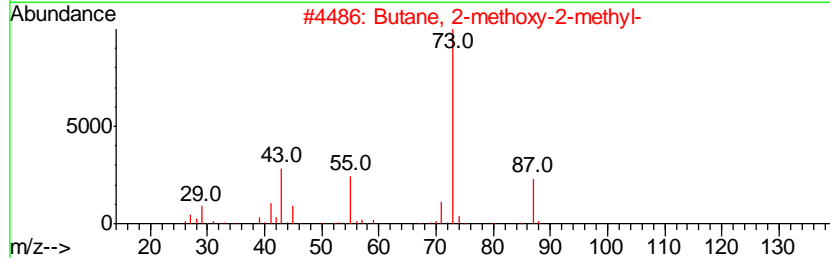
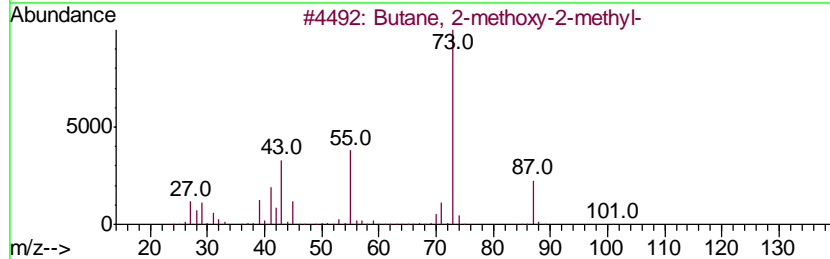
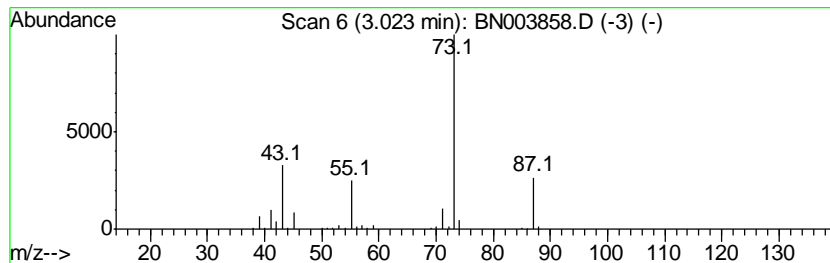
Quant Method : Z:\SVOASRV\HPCHEM1\BNA\_N\METHODS\SOM-EPA-BN121218MA.M  
 Quant Title : SVOA CALIBRATION

TIC Library : C:\Database\NIST11.L  
 TIC Integration Parameters: LSCINT.P

\*\*\*\*\*  
 Peak Number 1 Butane, 2-methoxy-2-methyl- Concentration Rank 1

| R.T. | EstConc      | Area   | Relative to ISTD       | R.T. |
|------|--------------|--------|------------------------|------|
| 3.02 | 105.12 ng/ul | 489225 | 1,4-Dichlorobenzene-d4 | 7.83 |

| Hit# | of | Tentative ID                        | MW  | MolForm | CAS#         | Qual |
|------|----|-------------------------------------|-----|---------|--------------|------|
| 1    | 5  | Butane, 2-methoxy-2-methyl-         | 102 | C6H14O  | 000994-05-8  | 83   |
| 2    |    | Butane, 2-methoxy-2-methyl-         | 102 | C6H14O  | 000994-05-8  | 78   |
| 3    |    | 2,2,4-Trimethyl-3-pentanol          | 130 | C8H18O  | 005162-48-1  | 39   |
| 4    |    | 1,3-Dioxolane, 2-methyl-            | 88  | C4H8O2  | 000497-26-7  | 25   |
| 5    |    | 1-(2-Methoxyethoxy)-2-methyl-2-p... | 162 | C8H18O3 | 1000364-24-4 | 25   |



Data Path : Z:\SVOASRV\HPCHEM1\BNA N\DATA\BN121218\  
 Data File : BN003858.D  
 Acq On : 12 Dec 2018 19:24  
 Operator : JU/SJ  
 Sample : J6228-11  
 Misc :  
 ALS Vial : 8 Sample Multiplier: 1

Instrument :  
 BNA\_N  
 ClientSampled :  
 F9E90

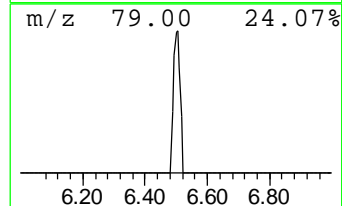
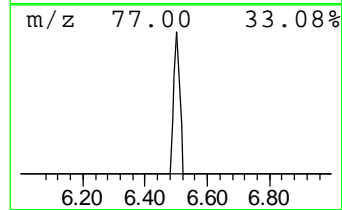
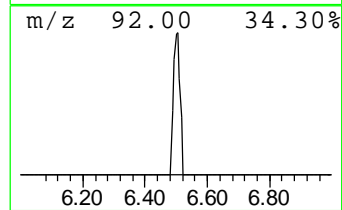
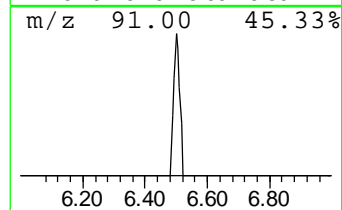
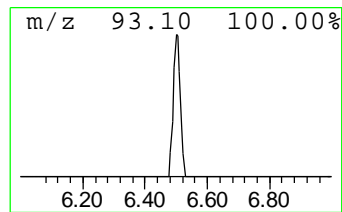
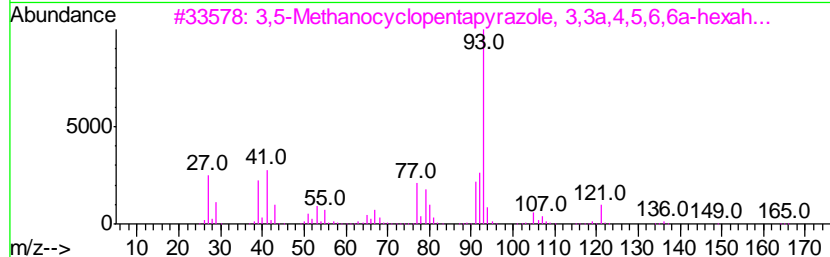
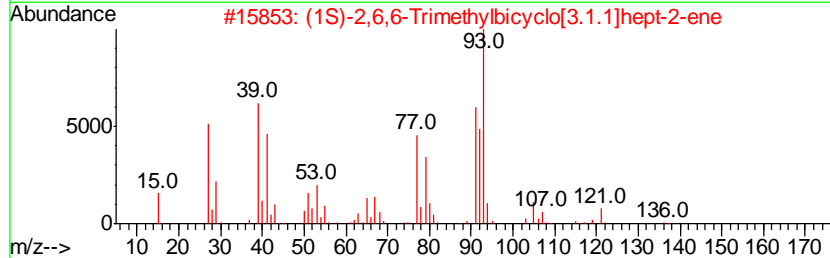
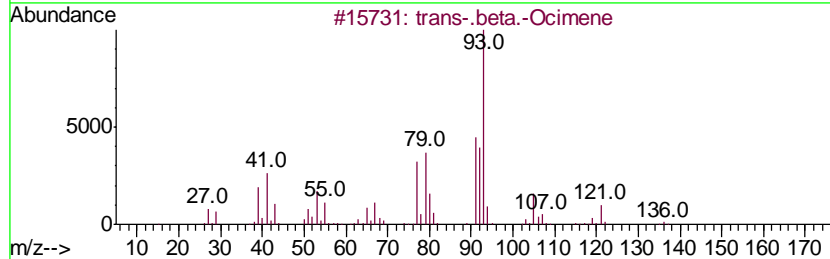
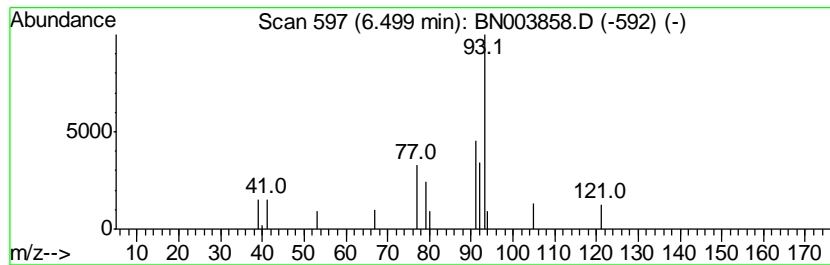
Quant Method : Z:\SVOASRV\HPCHEM1\BNA\_N\METHODS\SOM-EPA-BN121218MA.M  
 Quant Title : SVOA CALIBRATION

TIC Library : C:\Database\NIST11.L  
 TIC Integration Parameters: LSCINT.P

\*\*\*\*\*  
 Peak Number 2 trans-.beta.-Ocimene Concentration Rank 4

| R.T. | EstConc    | Area  | Relative to ISTD       | R.T. |
|------|------------|-------|------------------------|------|
| 6.50 | 3.86 ng/ul | 17978 | 1,4-Dichlorobenzene-d4 | 7.83 |

| Hit# | of | Tentative ID                        | MW  | MolForm  | CAS#        | Qual |
|------|----|-------------------------------------|-----|----------|-------------|------|
| 1    | 5  | trans-.beta.-Ocimene                | 136 | C10H16   | 003779-61-1 | 86   |
| 2    |    | (1S)-2,6,6-Trimethylbicyclo[3.1.... | 136 | C10H16   | 007785-26-4 | 83   |
| 3    |    | 3,5-Methanocyclopentapyrazole, 3... | 164 | C10H16N2 | 087143-58-6 | 78   |
| 4    |    | Bicyclo[3.1.1]hept-2-ene, 3,6,6-... | 136 | C10H16   | 004889-83-2 | 74   |
| 5    |    | trans-.beta.-Ocimene                | 136 | C10H16   | 003779-61-1 | 47   |



Data Path : Z:\SVOASRV\HPCHEM1\BNA N\DATA\BN121218\  
 Data File : BN003858.D  
 Acq On : 12 Dec 2018 19:24  
 Operator : JU/SJ  
 Sample : J6228-11  
 Misc :  
 ALS Vial : 8 Sample Multiplier: 1

Instrument :  
 BNA\_N  
 ClientSampled :  
 F9E90

Quant Method : Z:\SVOASRV\HPCHEM1\BNA\_N\METHODS\SOM-EPA-BN121218MA.M  
 Quant Title : SVOA CALIBRATION

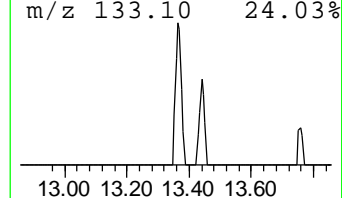
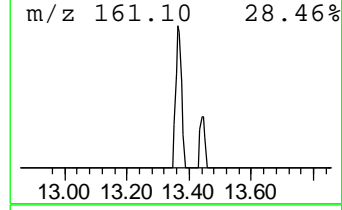
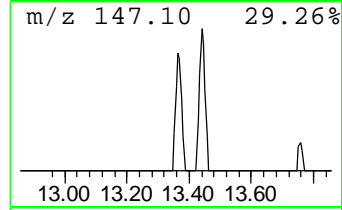
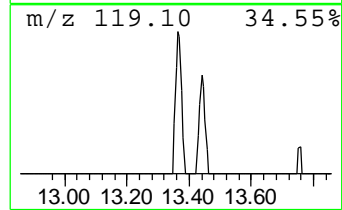
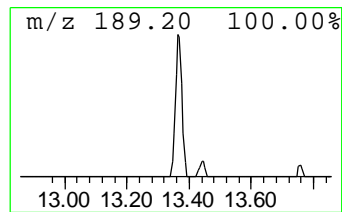
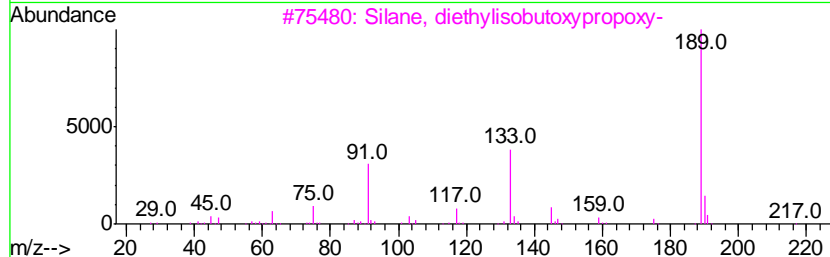
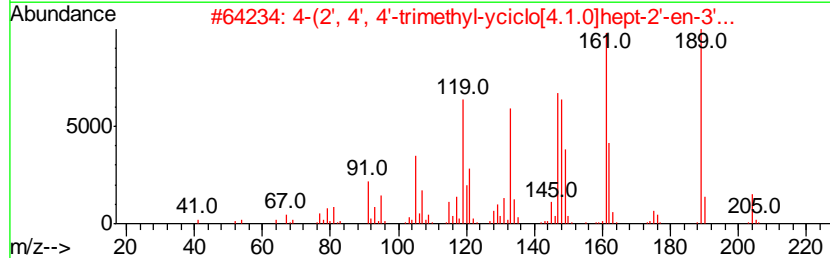
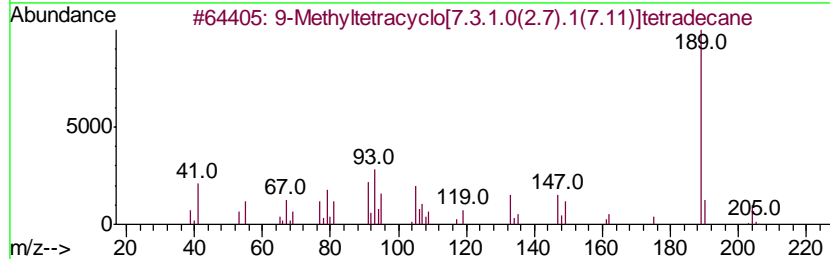
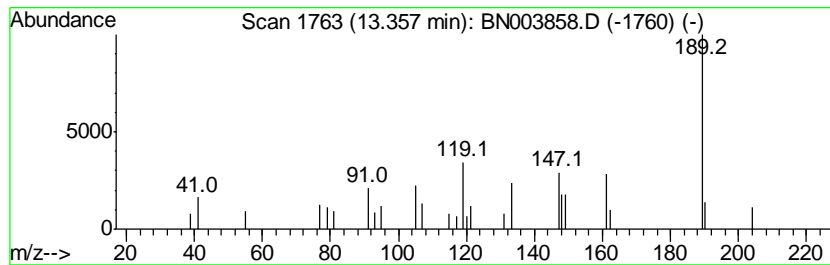
TIC Library : C:\Database\NIST11.L  
 TIC Integration Parameters: LSCINT.P

\*\*\*\*\*  
 Peak Number 3 9-Methyltetracyclo[7.3.1.0(... Concentration Rank 6

| R.T.  | EstConc    | Area  | Relative to ISTD | R.T.  |
|-------|------------|-------|------------------|-------|
| 13.36 | 3.09 ng/ul | 39233 | Acenaphthene-d10 | 14.47 |

| Hit# | of | Tentative ID                        | MW  | MolForm    | CAS#         | Qual |
|------|----|-------------------------------------|-----|------------|--------------|------|
| 1    | 5  | 9-Methyltetracyclo[7.3.1.0(2.7)...  | 204 | C15H24     | 1000215-30-5 | 53   |
| 2    |    | 4-(2', 4', 4'-trimethyl-yciclo[4... | 204 | C14H20O    | 1000373-94-4 | 52   |
| 3    |    | Silane, diethylisobutoxypropoxy-    | 218 | C11H26O2Si | 1000363-05-7 | 38   |
| 4    |    | 1H-[1,4]Oxazino[4,3-a][1,3]benzi... | 189 | C10H11N3O  | 1000362-54-6 | 38   |
| 5    |    | 3H-1,3,4-Benzotriazepin-2-one, 1... | 189 | C10H11N3O  | 105999-05-1  | 38   |



Data Path : Z:\SVOASRV\HPCHEM1\BNA N\DATA\BN121218\  
 Data File : BN003858.D  
 Acq On : 12 Dec 2018 19:24  
 Operator : JU/SJ  
 Sample : J6228-11  
 Misc :  
 ALS Vial : 8 Sample Multiplier: 1

Instrument :  
 BNA\_N  
 ClientSampled :  
 F9E90

Quant Method : Z:\SVOASRV\HPCHEM1\BNA\_N\METHODS\SOM-EPA-BN121218MA.M  
 Quant Title : SVOA CALIBRATION

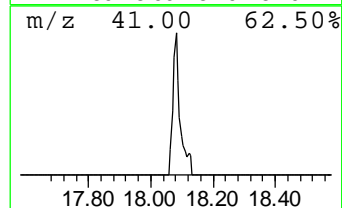
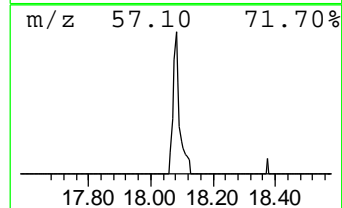
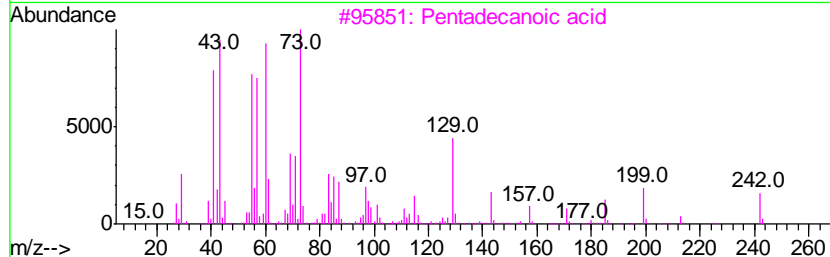
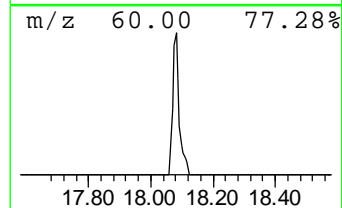
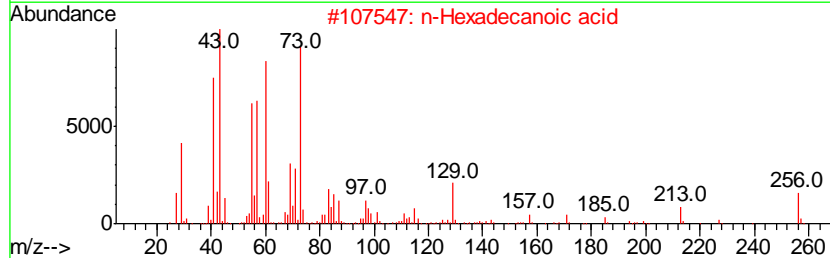
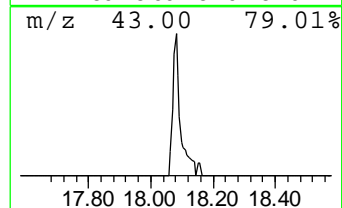
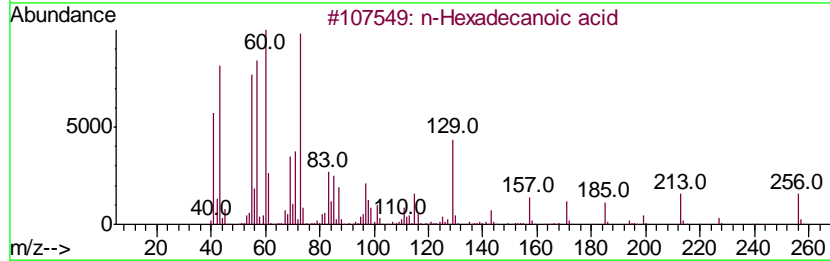
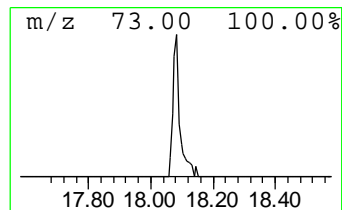
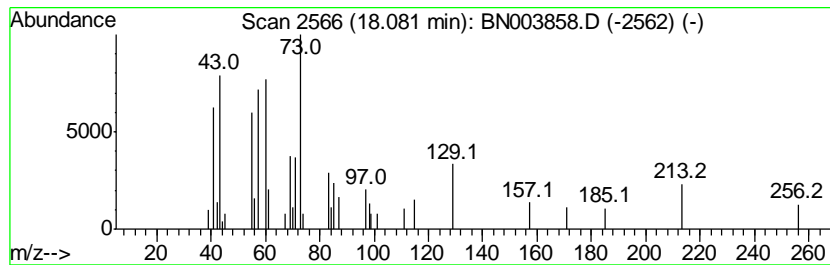
TIC Library : C:\Database\NIST11.L  
 TIC Integration Parameters: LSCINT.P

\*\*\*\*\*  
 Peak Number 4 n-Hexadecanoic acid Concentration Rank 9

| R.T.  | EstConc    | Area  | Relative to ISTD | R.T.  |
|-------|------------|-------|------------------|-------|
| 18.08 | 2.93 ng/ul | 49803 | Phenanthrene-d10 | 17.21 |

| Hit# | of | Tentative ID        | MW  | MolForm  | CAS#        | Qual |
|------|----|---------------------|-----|----------|-------------|------|
| 1    | 5  | n-Hexadecanoic acid | 256 | C16H32O2 | 000057-10-3 | 99   |
| 2    |    | n-Hexadecanoic acid | 256 | C16H32O2 | 000057-10-3 | 87   |
| 3    |    | Pentadecanoic acid  | 242 | C15H30O2 | 001002-84-2 | 81   |
| 4    |    | Tridecanoic acid    | 214 | C13H26O2 | 000638-53-9 | 64   |
| 5    |    | Tetradecanoic acid  | 228 | C14H28O2 | 000544-63-8 | 64   |



Data Path : Z:\SVOASRV\HPCHEM1\BNA N\DATA\BN121218\  
 Data File : BN003858.D  
 Acq On : 12 Dec 2018 19:24  
 Operator : JU/SJ  
 Sample : J6228-11  
 Misc :  
 ALS Vial : 8 Sample Multiplier: 1

Instrument :  
 BNA\_N  
 ClientSampleID :  
 F9E90

Quant Method : Z:\SVOASRV\HPCHEM1\BNA\_N\METHODS\SOM-EPA-BN121218MA.M  
 Quant Title : SVOA CALIBRATION

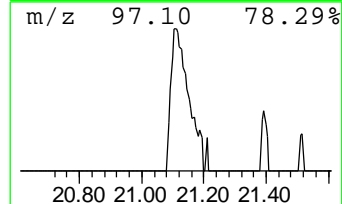
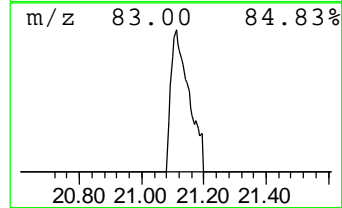
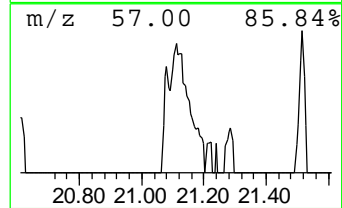
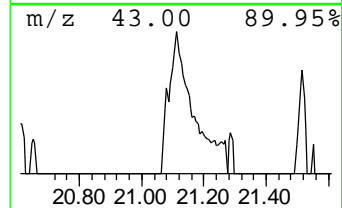
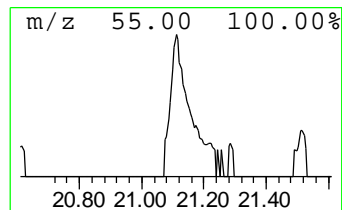
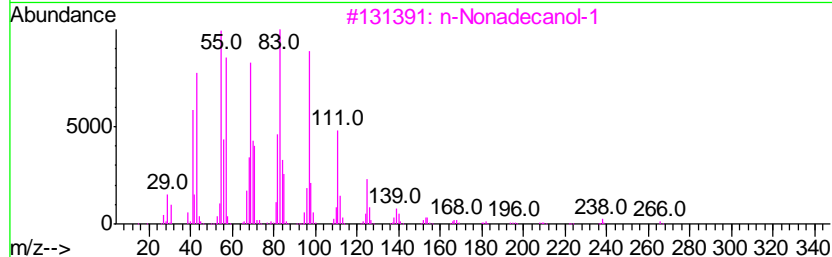
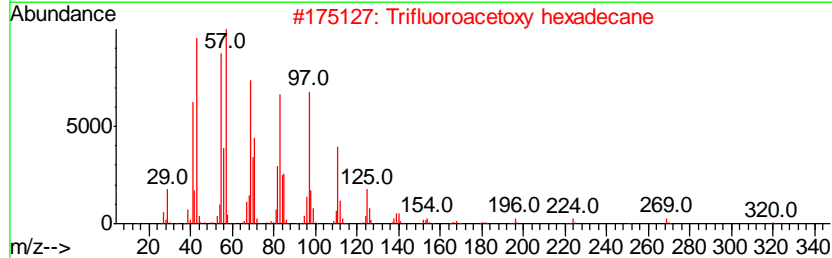
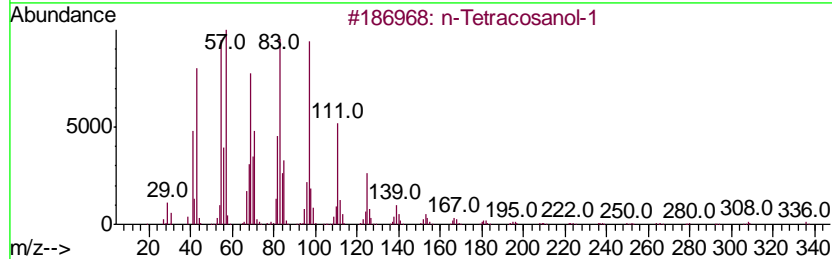
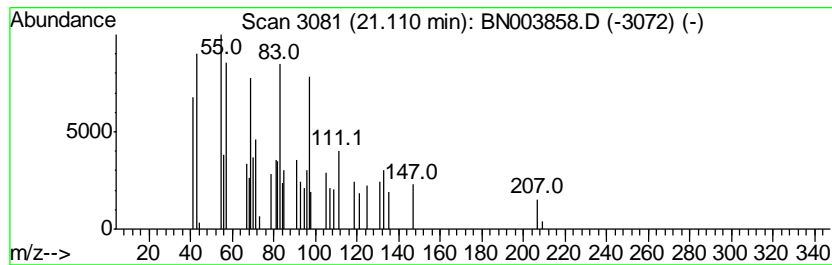
TIC Library : C:\Database\NIST11.L  
 TIC Integration Parameters: LSCINT.P

\*\*\*\*\*  
 Peak Number 5 n-Tetracosanol-1 Concentration Rank 10

| R.T.  | EstConc    | Area  | Relative to ISTD | R.T.  |
|-------|------------|-------|------------------|-------|
| 21.11 | 2.70 ng/ul | 70431 | Chrysene-d12     | 21.39 |

| Hit# | of | Tentative ID                | MW  | MolForm    | CAS#        | Qual |
|------|----|-----------------------------|-----|------------|-------------|------|
| 1    | 5  | n-Tetracosanol-1            | 354 | C24H50O    | 000506-51-4 | 76   |
| 2    |    | Trifluoroacetoxy hexadecane | 338 | C18H33F3O2 | 006222-03-3 | 76   |
| 3    |    | n-Nonadecanol-1             | 284 | C19H40O    | 001454-84-8 | 76   |
| 4    |    | 1-Heneicosanol              | 312 | C21H44O    | 015594-90-8 | 76   |
| 5    |    | Behenic alcohol             | 326 | C22H46O    | 000661-19-8 | 76   |





Data Path : Z:\SVOASRV\HPCHEM1\BNA N\DATA\BN121218\  
 Data File : BN003858.D  
 Acq On : 12 Dec 2018 19:24  
 Operator : JU/SJ  
 Sample : J6228-11  
 Misc :  
 ALS Vial : 8 Sample Multiplier: 1

Instrument :  
 BNA\_N  
 ClientSampleID :  
 F9E90

Quant Method : Z:\SVOASRV\HPCHEM1\BNA\_N\METHODS\SOM-EPA-BN121218MA.M  
 Quant Title : SVOA CALIBRATION

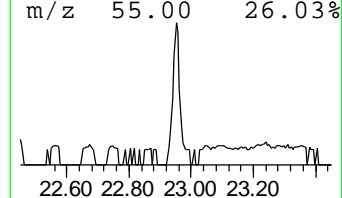
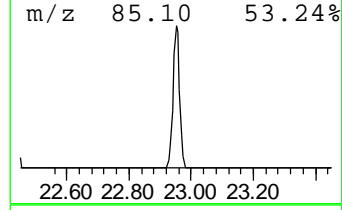
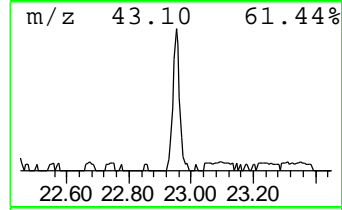
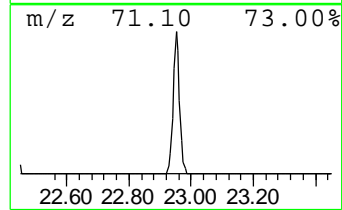
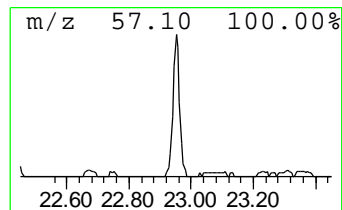
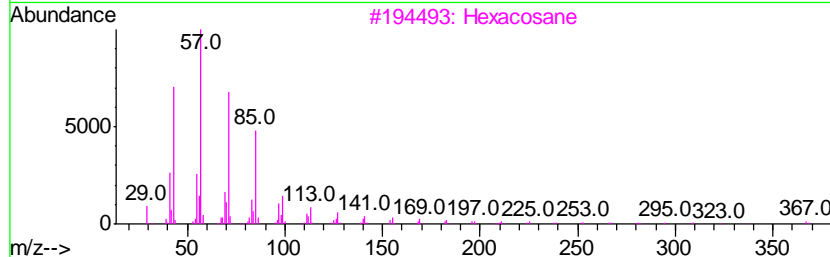
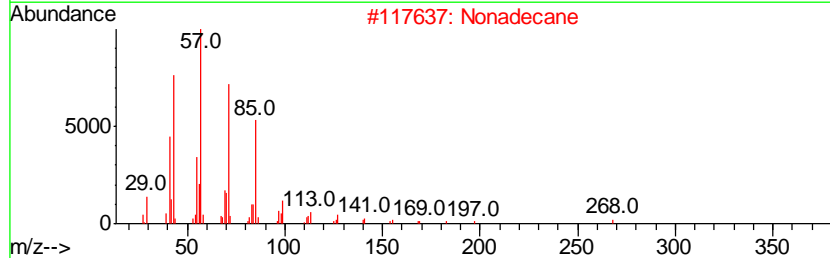
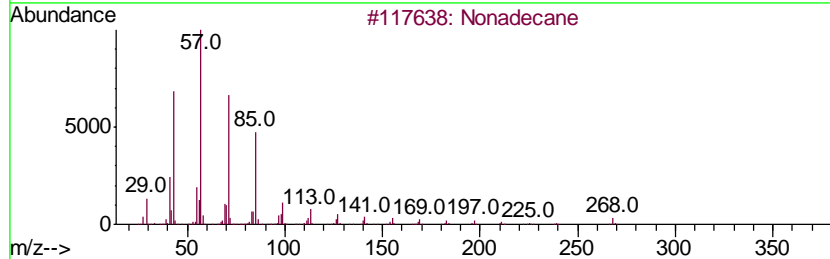
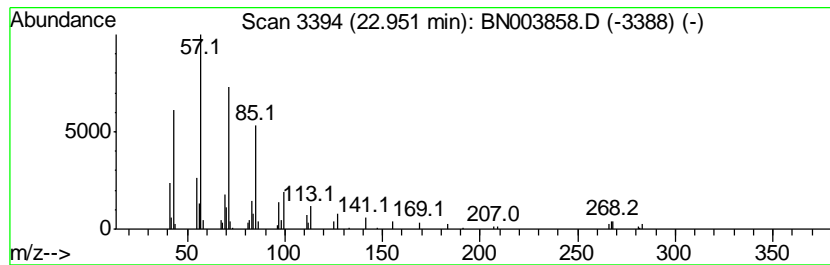
TIC Library : C:\Database\NIST11.L  
 TIC Integration Parameters: LSCINT.P

\*\*\*\*\*  
 Peak Number 6 (DEL) Alkane: Straight-Chai... Concentration Rank 8

| R.T.  | EstConc    | Area  | Relative to ISTD | R.T.  |
|-------|------------|-------|------------------|-------|
| 22.95 | 2.96 ng/ul | 88714 | Perylene-d12     | 23.71 |

| Hit# | of | Tentative ID          | MW  | MolForm | CAS#        | Qual |
|------|----|-----------------------|-----|---------|-------------|------|
| 1    | 5  | Nonadecane            | 268 | C19H40  | 000629-92-5 | 94   |
| 2    |    | Nonadecane            | 268 | C19H40  | 000629-92-5 | 91   |
| 3    |    | Hexacosane            | 366 | C26H54  | 000630-01-3 | 90   |
| 4    |    | Heneicosane           | 296 | C21H44  | 000629-94-7 | 90   |
| 5    |    | Heptadecane, 9-octyl- | 352 | C25H52  | 007225-64-1 | 90   |



Data Path : Z:\SVOASRV\HPCHEM1\BNA N\DATA\BN121218\  
 Data File : BN003858.D  
 Acq On : 12 Dec 2018 19:24  
 Operator : JU/SJ  
 Sample : J6228-11  
 Misc :  
 ALS Vial : 8 Sample Multiplier: 1

Instrument :  
 BNA\_N  
 ClientSampleID :  
 F9E90

Quant Method : Z:\SVOASRV\HPCHEM1\BNA\_N\METHODS\SOM-EPA-BN121218MA.M  
 Quant Title : SVOA CALIBRATION

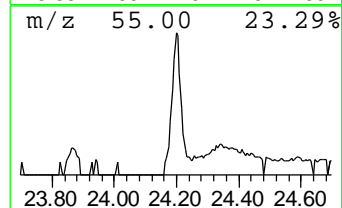
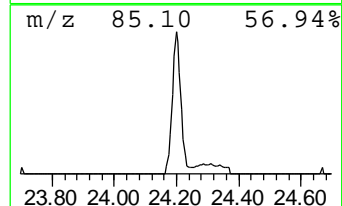
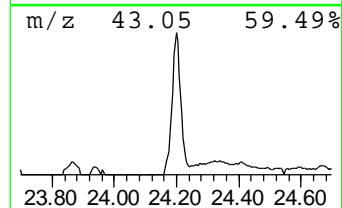
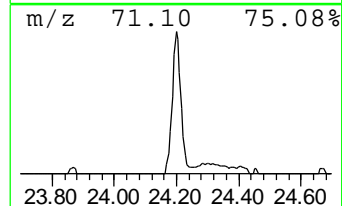
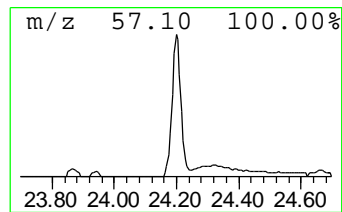
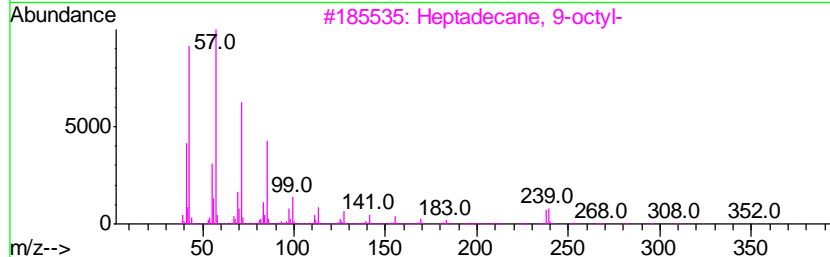
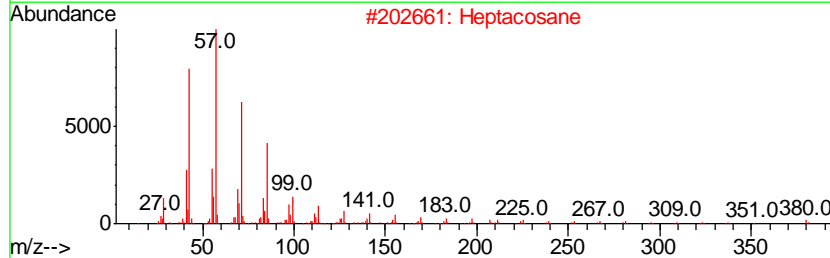
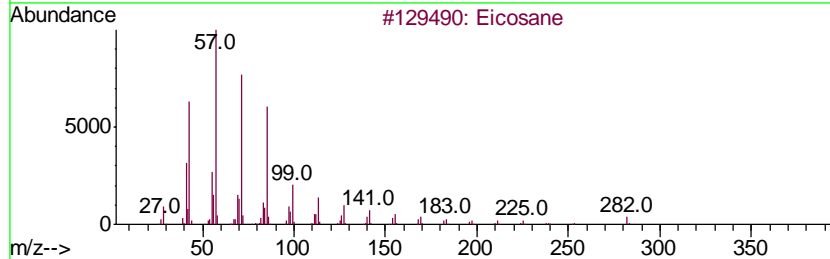
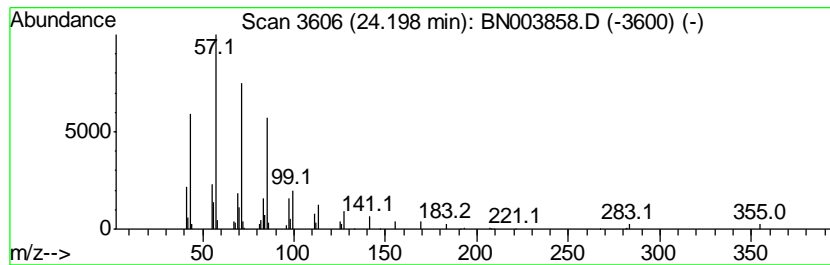
TIC Library : C:\Database\NIST11.L  
 TIC Integration Parameters: LSCINT.P

\*\*\*\*\*  
 Peak Number 7 (DEL) Alkane: Straight-Chai... Concentration Rank 3

| R.T.  | EstConc    | Area   | Relative to ISTD | R.T.  |
|-------|------------|--------|------------------|-------|
| 24.20 | 4.33 ng/ul | 129704 | Perylene-d12     | 23.71 |

| Hit# | of | Tentative ID          | MW  | MolForm | CAS#         | Qual |
|------|----|-----------------------|-----|---------|--------------|------|
| 1    | 5  | Eicosane              | 282 | C20H42  | 000112-95-8  | 94   |
| 2    |    | Heptacosane           | 380 | C27H56  | 000593-49-7  | 91   |
| 3    |    | Heptadecane, 9-octyl- | 352 | C25H52  | 007225-64-1  | 91   |
| 4    |    | 2-methylhexacosane    | 380 | C27H56  | 1000376-72-7 | 91   |
| 5    |    | Tetratetracontane     | 619 | C44H90  | 007098-22-8  | 91   |



Data Path : Z:\SVOASRV\HPCHEM1\BNA N\DATA\BN121218\  
 Data File : BN003858.D  
 Acq On : 12 Dec 2018 19:24  
 Operator : JU/SJ  
 Sample : J6228-11  
 Misc :  
 ALS Vial : 8 Sample Multiplier: 1

Instrument :  
 BNA\_N  
 ClientSampleId :  
 F9E90

Quant Method : Z:\SVOASRV\HPCHEM1\BNA\_N\METHODS\SOM-EPA-BN121218MA.M  
 Quant Title : SVOA CALIBRATION

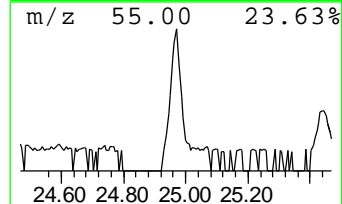
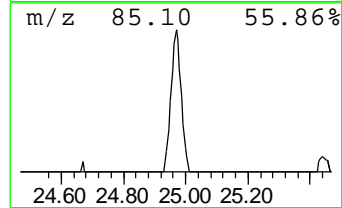
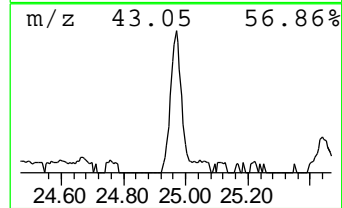
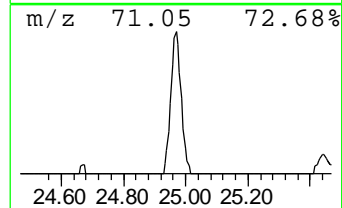
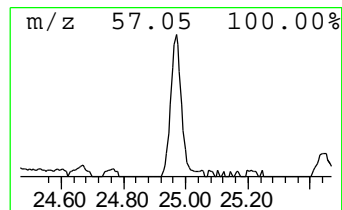
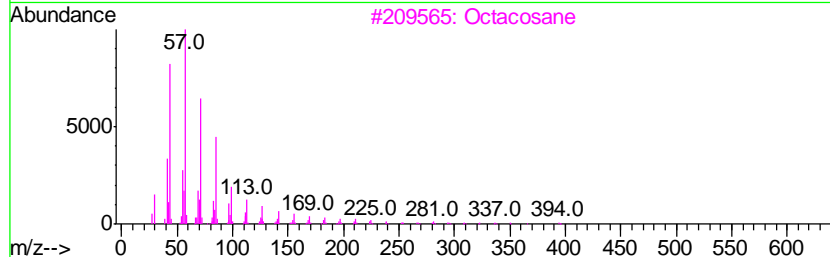
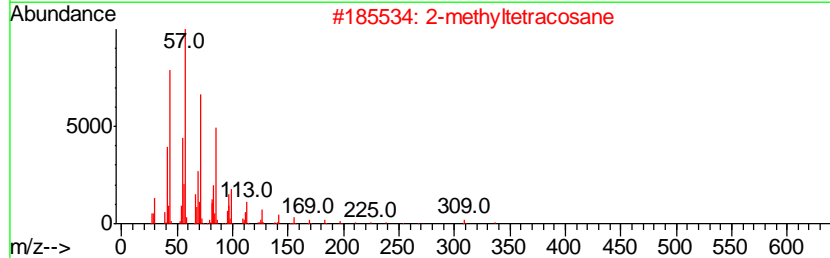
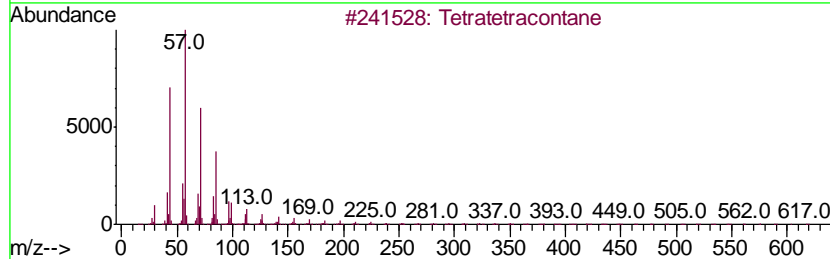
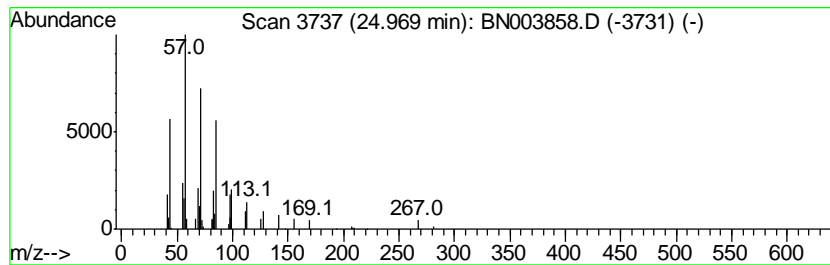
TIC Library : C:\Database\NIST11.L  
 TIC Integration Parameters: LSCINT.P

\*\*\*\*\*  
 Peak Number 8 (DEL) Alkane: Straight-Chai... Concentration Rank 7

| R.T.  | EstConc    | Area  | Relative to ISTD | R.T.  |
|-------|------------|-------|------------------|-------|
| 24.97 | 2.98 ng/ul | 89130 | Perylene-d12     | 23.71 |

| Hit# | of | Tentative ID                     | MW  | MolForm | CAS#         | Qual |
|------|----|----------------------------------|-----|---------|--------------|------|
| 1    | 5  | Tetratetracontane                | 619 | C44H90  | 007098-22-8  | 91   |
| 2    |    | 2-methyltetracosane              | 352 | C25H52  | 1000376-72-6 | 91   |
| 3    |    | Octacosane                       | 394 | C28H58  | 000630-02-4  | 91   |
| 4    |    | Hentriacontane                   | 437 | C31H64  | 000630-04-6  | 90   |
| 5    |    | Heneicosane, 11-(1-ethylpropyl)- | 366 | C26H54  | 055282-11-6  | 90   |



Data Path : Z:\SVOASRV\HPCHEM1\BNA N\DATA\BN121218\  
 Data File : BN003858.D  
 Acq On : 12 Dec 2018 19:24  
 Operator : JU/SJ  
 Sample : J6228-11  
 Misc :  
 ALS Vial : 8 Sample Multiplier: 1

Instrument :  
 BNA\_N  
 ClientSampled :  
 F9E90

Quant Method : Z:\SVOASRV\HPCHEM1\BNA\_N\METHODS\SOM-EPA-BN121218MA.M  
 Quant Title : SVOA CALIBRATION

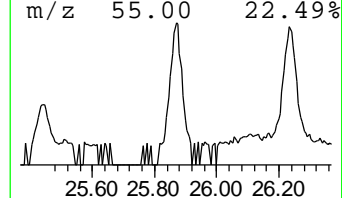
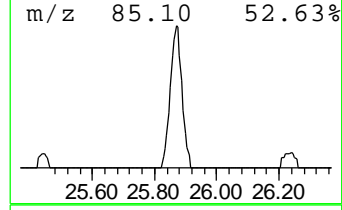
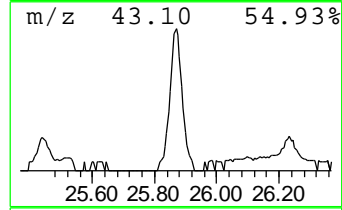
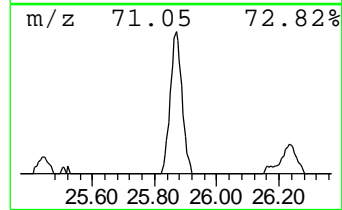
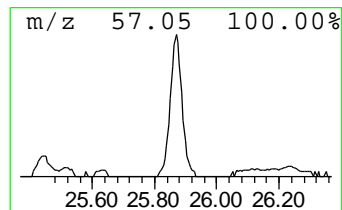
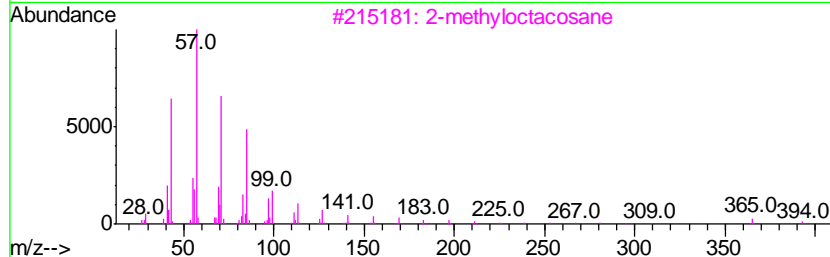
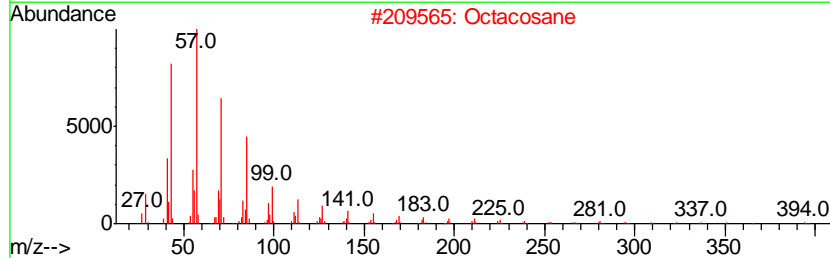
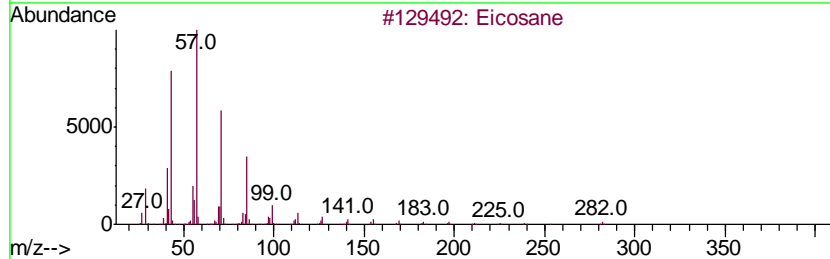
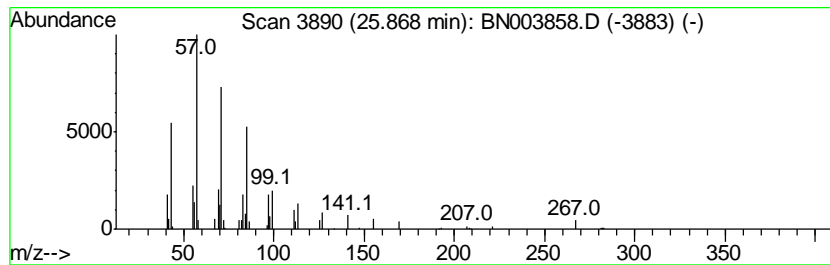
TIC Library : C:\Database\NIST11.L  
 TIC Integration Parameters: LSCINT.P

\*\*\*\*\*  
 Peak Number 9 (DEL) Alkane: Straight-Chai... Concentration Rank 5

| R.T.  | EstConc    | Area   | Relative to ISTD | R.T.  |
|-------|------------|--------|------------------|-------|
| 25.87 | 3.83 ng/ul | 114726 | Perylene-d12     | 23.71 |

| Hit# | of | Tentative ID       | MW  | MolForm | CAS#         | Qual |
|------|----|--------------------|-----|---------|--------------|------|
| 1    | 5  | Eicosane           | 282 | C20H42  | 000112-95-8  | 91   |
| 2    |    | Octacosane         | 394 | C28H58  | 000630-02-4  | 91   |
| 3    |    | 2-methyloctacosane | 408 | C29H60  | 1000376-72-8 | 91   |
| 4    |    | Heptacosane        | 380 | C27H56  | 000593-49-7  | 91   |
| 5    |    | Triacontane        | 422 | C30H62  | 000638-68-6  | 91   |



Data Path : Z:\SVOASRV\HPCHEM1\BNA N\DATA\BN121218\  
 Data File : BN003858.D  
 Acq On : 12 Dec 2018 19:24  
 Operator : JU/SJ  
 Sample : J6228-11  
 Misc :  
 ALS Vial : 8 Sample Multiplier: 1

Instrument :  
 BNA\_N  
 ClientSampled :  
 F9E90

Quant Method : Z:\SVOASRV\HPCHEM1\BNA\_N\METHODS\SOM-EPA-BN121218MA.M  
 Quant Title : SVOA CALIBRATION

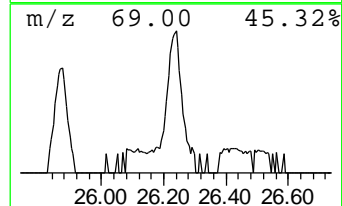
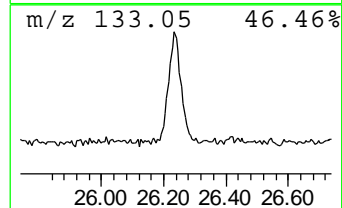
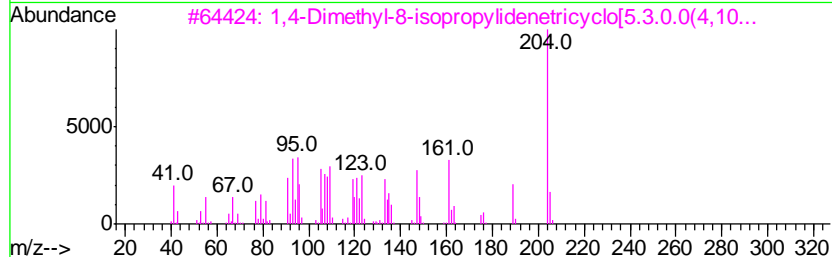
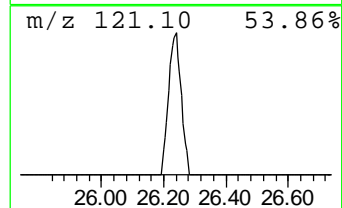
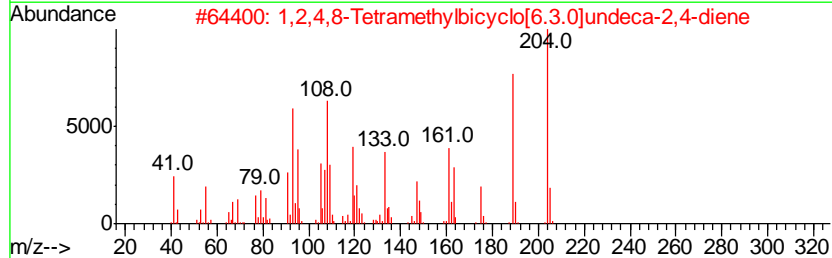
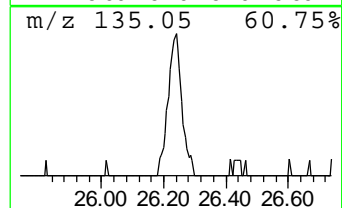
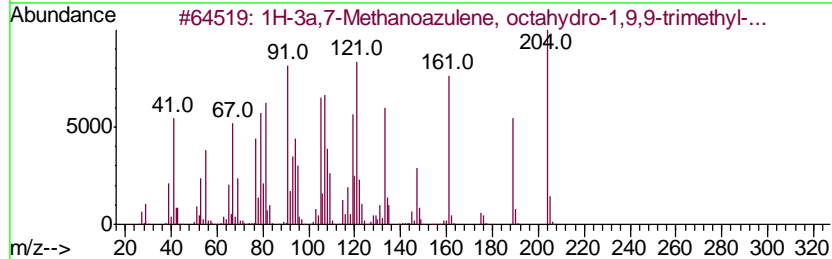
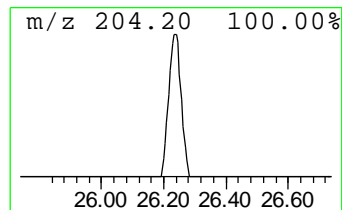
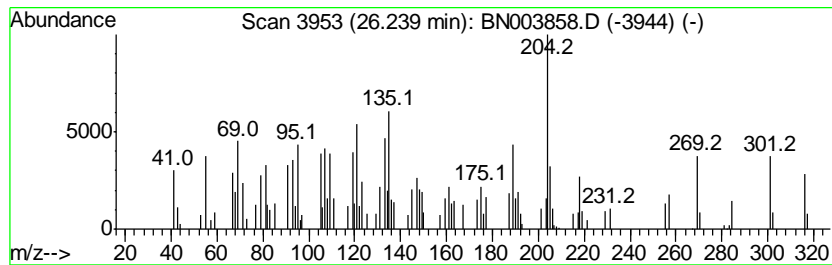
TIC Library : C:\Database\NIST11.L  
 TIC Integration Parameters: LSCINT.P

\*\*\*\*\*  
 Peak Number 10 1H-3a,7-Methanoazulene, oct... Concentration Rank 2

| R.T.  | EstConc    | Area   | Relative to ISTD | R.T.  |
|-------|------------|--------|------------------|-------|
| 26.24 | 6.95 ng/ul | 207992 | Perylene-d12     | 23.71 |

| Hit# | of | Tentative ID                        | MW  | MolForm | CAS#         | Qual |
|------|----|-------------------------------------|-----|---------|--------------|------|
| 1    | 5  | 1H-3a,7-Methanoazulene, octahydr... | 204 | C15H24  | 000508-55-4  | 83   |
| 2    |    | 1,2,4,8-Tetramethylbicyclo[6.3.0... | 204 | C15H24  | 137235-51-9  | 58   |
| 3    |    | 1,4-Dimethyl-8-isopropylidenetri... | 204 | C15H24  | 1000140-07-7 | 53   |
| 4    |    | Naphthalene, 1,2,3,5,6,7,8,8a-oc... | 204 | C15H24  | 004630-07-3  | 47   |
| 5    |    | 1H-3a,7-Methanoazulene, 2,3,6,7,... | 204 | C15H24  | 000560-32-7  | 46   |



Data Path : Z:\SVOASRV\HPCHEM1\BNA N\DATA\BN121218\  
 Data File : BN003858.D  
 Acq On : 12 Dec 2018 19:24  
 Operator : JU/SJ  
 Sample : J6228-11  
 Misc :  
 ALS Vial : 8 Sample Multiplier: 1

Instrument :  
 BNA\_N  
 ClientSampled :  
 F9E90

Quant Method : Z:\SVOASRV\HPCHEM1\BNA\_N\METHODS\SOM-EPA-BN121218MA.M  
 Quant Title : SVOA CALIBRATION

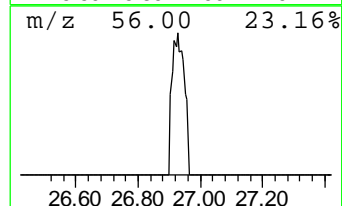
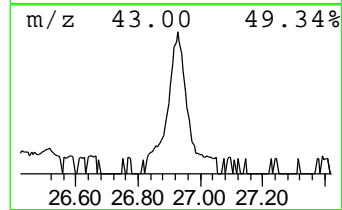
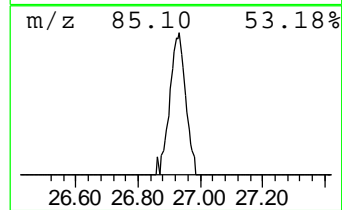
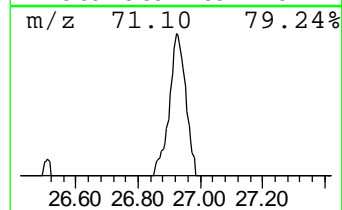
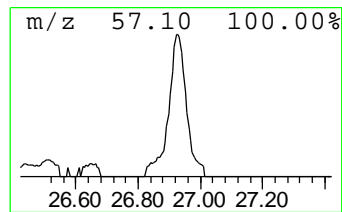
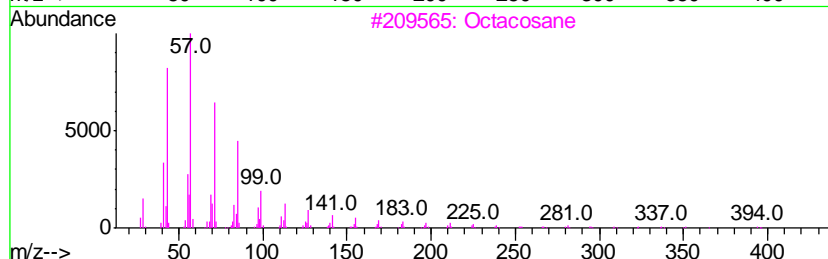
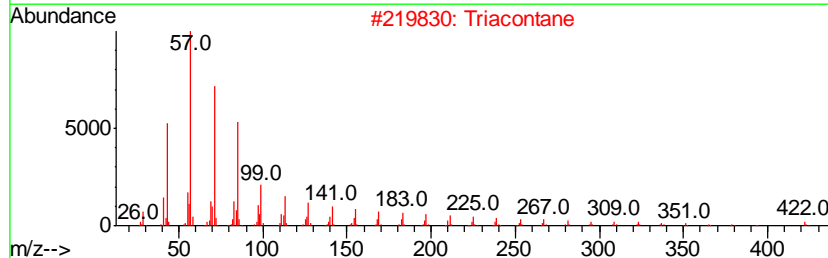
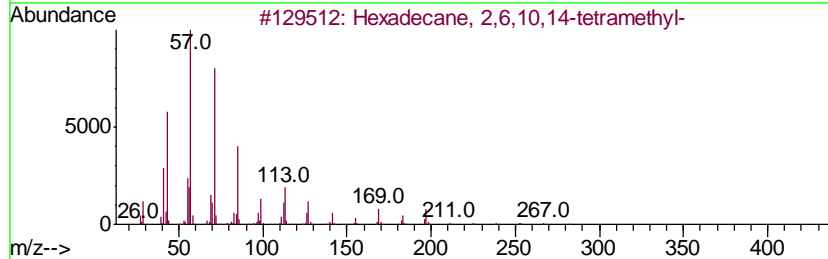
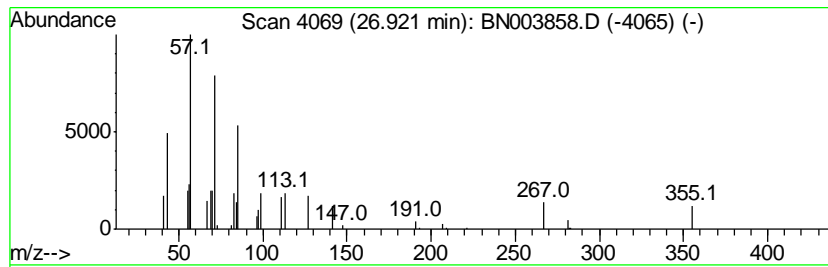
TIC Library : C:\Database\NIST11.L  
 TIC Integration Parameters: LSCINT.P

\*\*\*\*\*  
 Peak Number 11 (DEL) Alkane: Straight-Chai... Concentration Rank 11

| R.T.  | EstConc    | Area  | Relative to ISTD | R.T.  |
|-------|------------|-------|------------------|-------|
| 26.92 | 2.45 ng/ul | 73279 | Perylene-d12     | 23.71 |

| Hit# | of | Tentative ID                       | MW  | MolForm | CAS#        | Qual |
|------|----|------------------------------------|-----|---------|-------------|------|
| 1    | 5  | Hexadecane, 2,6,10,14-tetramethyl- | 282 | C20H42  | 000638-36-8 | 72   |
| 2    |    | Triacosane                         | 422 | C30H62  | 000638-68-6 | 72   |
| 3    |    | Octacosane                         | 394 | C28H58  | 000630-02-4 | 72   |
| 4    |    | Tetracosane                        | 338 | C24H50  | 000646-31-1 | 64   |
| 5    |    | Tetratriacontane                   | 479 | C34H70  | 014167-59-0 | 64   |



Data Path : Z:\SVOASRV\HPCHEM1\BNA\_N\DATA\BN121218\  
 Data File : BN003858.D  
 Acq On : 12 Dec 2018 19:24  
 Operator : JU/SJ  
 Sample : J6228-11  
 Misc :  
 ALS Vial : 8 Sample Multiplier: 1

Instrument :  
 BNA\_N  
 ClientSampleId :  
 F9E90

Quant Method : Z:\SVOASRV\HPCHEM1\BNA\_N\METHODS\SOM-EPA-BN121218MA.M  
 Quant Title : SVOA CALIBRATION

TIC Library : C:\Database\NIST11.L  
 TIC Integration Parameters: LSCINT.P

| TIC Top Hit name     | RT    | EstConc | Units | Response | --Internal Standard-- |       |        |      |
|----------------------|-------|---------|-------|----------|-----------------------|-------|--------|------|
|                      |       |         |       |          | #                     | RT    | Resp   | Conc |
| Butane, 2-methoxy... | 3.02  | 105.1   | ng/ul | 489225   | 1                     | 7.83  | 93077  | 20.0 |
| trans-.beta.-Ocimene | 6.50  | 3.9     | ng/ul | 17978    | 1                     | 7.83  | 93077  | 20.0 |
| 9-Methyltetracycl... | 13.36 | 3.1     | ng/ul | 39233    | 3                     | 14.47 | 254119 | 20.0 |
| n-Hexadecanoic acid  | 18.08 | 2.9     | ng/ul | 49803    | 4                     | 17.21 | 340112 | 20.0 |
| n-Tetracosanol-1     | 21.11 | 2.7     | ng/ul | 70431    | 5                     | 21.39 | 522162 | 20.0 |
| (DEL) Alkane: Str... | 22.95 | 3.0     | ng/ul | 88714    | 6                     | 23.71 | 598634 | 20.0 |
| (DEL) Alkane: Str... | 24.20 | 4.3     | ng/ul | 129704   | 6                     | 23.71 | 598634 | 20.0 |
| (DEL) Alkane: Str... | 24.97 | 3.0     | ng/ul | 89130    | 6                     | 23.71 | 598634 | 20.0 |
| (DEL) Alkane: Str... | 25.87 | 3.8     | ng/ul | 114726   | 6                     | 23.71 | 598634 | 20.0 |
| 1H-3a,7-Methanoaz... | 26.24 | 7.0     | ng/ul | 207992   | 6                     | 23.71 | 598634 | 20.0 |
| (DEL) Alkane: Str... | 26.92 | 2.5     | ng/ul | 73279    | 6                     | 23.71 | 598634 | 20.0 |