

Data Path : Z:\SVOASRV\HPCHEM1\BNA\_N\DATA\BN121218\  
 Data File : BN003861.D  
 Acq On : 12 Dec 2018 21:09  
 Operator : JU/SJ  
 Sample : J6228-14  
 Misc :  
 ALS Vial : 11 Sample Multiplier: 1

Instrument :  
 BNA\_N  
 ClientSampled :  
 F9E49

Integration Parameters: LSCINT.P

Integrator: RTE  
 Smoothing : OFF  
 Sampling : 1  
 Start Thrs: 0.2  
 Stop Thrs : 0

Filtering: 5  
 Min Area: 1 % of largest Peak  
 Max Peaks: 100  
 Peak Location: TOP

If leading or trailing edge < 100 prefer < Baseline drop else tangent >  
 Peak separation: 5

Method : Z:\SVOASRV\HPCHEM1\BNA\_N\METHODS\SOM-EPA-BN121218MA.M  
 Title : SVOA CALIBRATION

Signal : TIC

peak #	R.T. min	first scan	max scan	last scan	PK TY	peak height	corr. area	corr. % max.	% of total
1	3.017	3	5	26	rVB	56834	86452	9.47%	1.235%
2	6.987	674	680	690	rBB2	55650	107660	11.79%	1.538%
3	7.164	705	710	719	rBB	48672	74480	8.16%	1.064%
4	7.358	738	743	750	rBB	58402	88443	9.69%	1.263%
5	7.834	818	824	830	rBB	68948	106956	11.71%	1.528%
6	8.522	936	941	950	rBB	72814	115442	12.64%	1.649%
7	8.999	1016	1022	1029	rBB	60073	97118	10.64%	1.387%
8	9.716	1138	1144	1150	rBB	49671	76602	8.39%	1.094%
9	10.240	1228	1233	1242	rBB	77088	123235	13.50%	1.760%
10	10.628	1292	1299	1307	rBB	118918	190389	20.85%	2.719%
11	10.769	1317	1323	1336	rBB	85429	141236	15.47%	2.017%
12	13.869	1845	1850	1855	rBV	195370	260245	28.50%	3.717%
13	13.916	1855	1858	1864	rVB	57261	72007	7.89%	1.029%
14	14.163	1894	1900	1906	rBV	213913	306367	33.56%	4.376%
15	14.469	1946	1952	1961	rVB2	200724	295464	32.36%	4.220%
16	14.657	1979	1984	1998	rBV	70769	110072	12.06%	1.572%
17	15.457	2114	2120	2129	rBV	303974	418404	45.83%	5.976%
18	15.581	2136	2141	2147	rVB	81497	105001	11.50%	1.500%
19	17.210	2412	2418	2424	rBV2	289822	393025	43.05%	5.614%
20	17.310	2429	2435	2446	rVB	360033	484892	53.11%	6.926%
21	18.081	2562	2566	2572	rBV	19066	22654	2.48%	0.324%
22	19.357	2779	2783	2795	rBV	10575	13646	1.49%	0.195%
23	19.504	2802	2808	2813	rVB2	33731	35939	3.94%	0.513%
24	19.604	2819	2825	2835	rVB	486472	639237	70.01%	9.131%
25	20.469	2968	2972	2976	rBV	52880	58364	6.39%	0.834%
26	20.510	2976	2979	2984	rVV	18313	28151	3.08%	0.402%
27	20.557	2984	2987	2991	rVB	25247	26762	2.93%	0.382%
28	21.110	3073	3081	3092	rBV5	6366	28988	3.17%	0.414%
29	21.392	3124	3129	3138	rVB	486213	598001	65.50%	8.542%
30	21.957	3221	3225	3228	rBV2	8560	10195	1.12%	0.146%
31	21.992	3228	3231	3238	rVB	11568	16922	1.85%	0.242%
32	22.433	3302	3306	3313	rVB	18132	21801	2.39%	0.311%
33	22.951	3389	3394	3400	rBV	25970	39610	4.34%	0.566%
34	23.563	3488	3498	3507	rBV	458740	913023	100.00%	13.041%

Data Path : Z:\SVOASRV\HPCHEM1\BNA N\DATA\BN121218\  
Data File : BN003861.D  
Acq On : 12 Dec 2018 21:09  
Operator : JU/SJ  
Sample : J6228-14  
Misc :  
ALS Vial : 11 Sample Multiplier: 1

Instrument :  
BNA\_N  
ClientSampleId :  
F9E49

Integration Parameters: LSCINT.P  
Integrator: RTE  
Smoothing : OFF Filtering: 5  
Sampling : 1 Min Area: 1 % of largest Peak  
Start Thrs: 0.2 Max Peaks: 100  
Stop Thrs : 0 Peak Location: TOP

If leading or trailing edge < 100 prefer < Baseline drop else tangent >  
Peak separation: 5

Method : Z:\SVOASRV\HPCHEM1\BNA\_N\METHODS\SOM-EPA-BN121218MA.M  
Title : SVOA CALIBRATION

35	23.710	3515	3523	3531	rBV	373714	691152	75.70%	9.872%
36	24.204	3601	3607	3614	rBV	28522	50648	5.55%	0.723%
37	24.969	3731	3737	3746	rVB	26580	57530	6.30%	0.822%
38	25.868	3884	3890	3899	rVB2	16857	45542	4.99%	0.651%
39	26.233	3946	3952	3962	rVB4	21091	49391	5.41%	0.705%

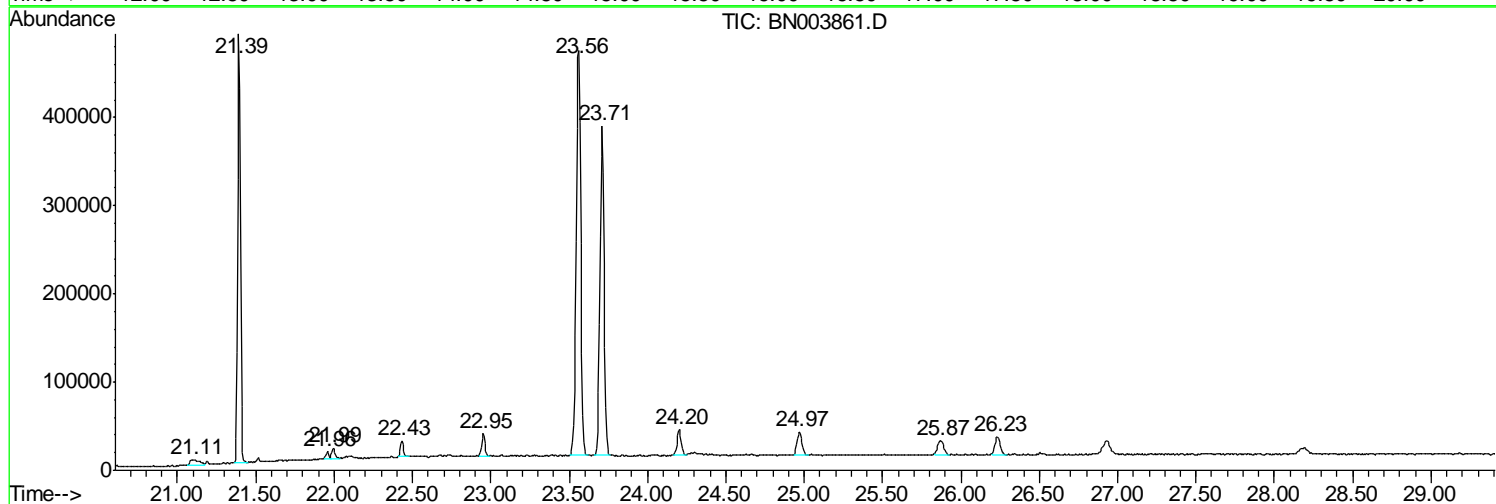
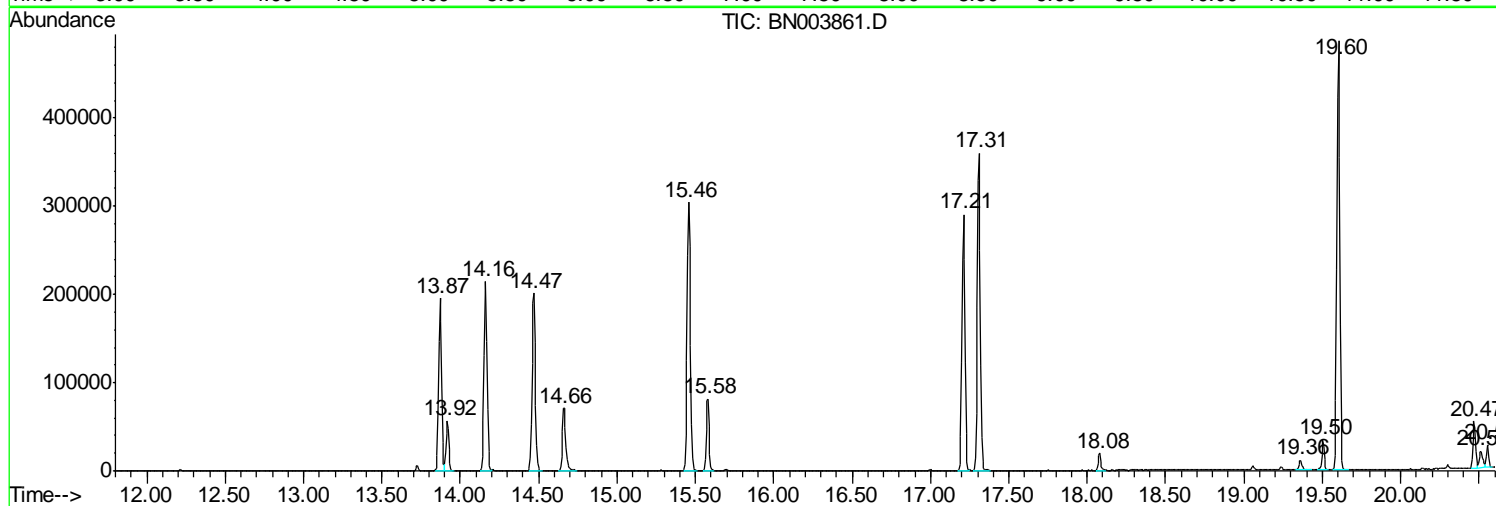
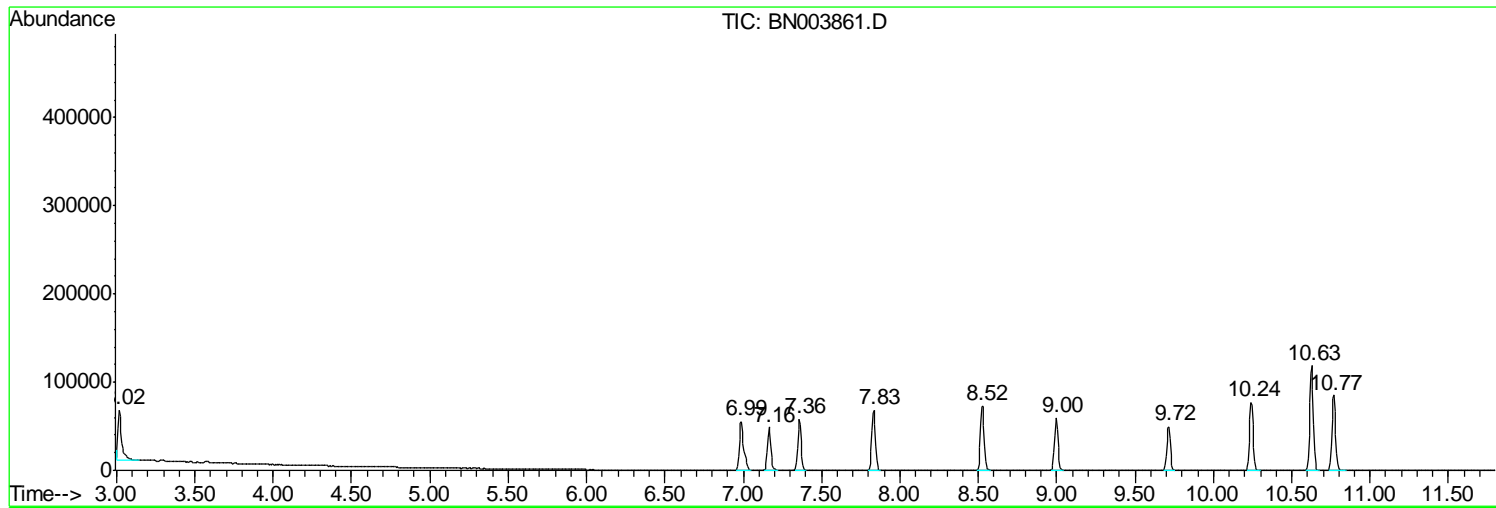
Sum of corrected areas: 7001046

Data Path : Z:\SVOASRV\HPCHEM1\BNA\_N\DATA\BN121218\  
Data File : BN003861.D  
Acq On : 12 Dec 2018 21:09  
Operator : JU/SJ  
Sample : J6228-14  
Misc :  
ALS Vial : 11 Sample Multiplier: 1

Instrument :  
BNA\_N  
ClientSampleId :  
F9E49

Quant Method : Z:\SVOASRV\HPCHEM1\BNA\_N\METHODS\SOM-EPA-BN121218MA.M  
Quant Title : SVOA CALIBRATION

TIC Library : C:\Database\NIST11.L  
TIC Integration Parameters: LSCINT.P



Data Path : Z:\SVOASRV\HPCHEM1\BNA N\DATA\BN121218\  
 Data File : BN003861.D  
 Acq On : 12 Dec 2018 21:09  
 Operator : JU/SJ  
 Sample : J6228-14  
 Misc :  
 ALS Vial : 11 Sample Multiplier: 1

Instrument :  
 BNA\_N  
 ClientSampled :  
 F9E49

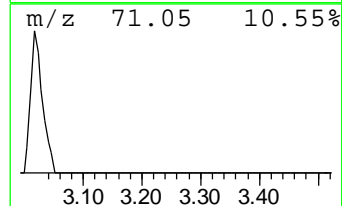
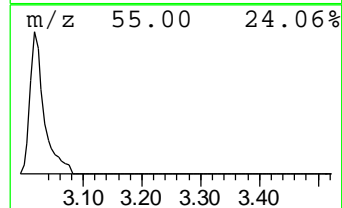
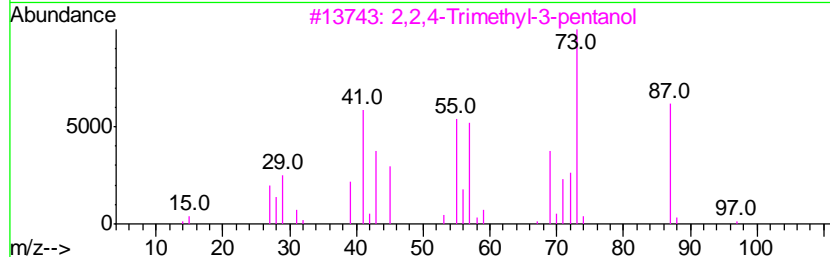
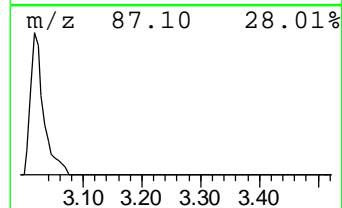
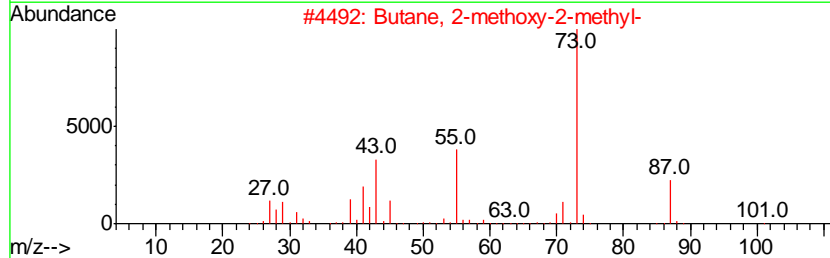
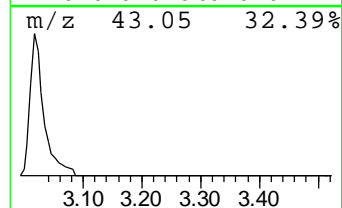
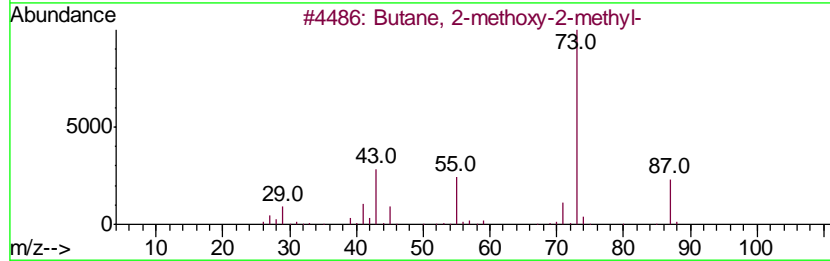
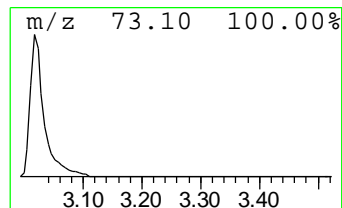
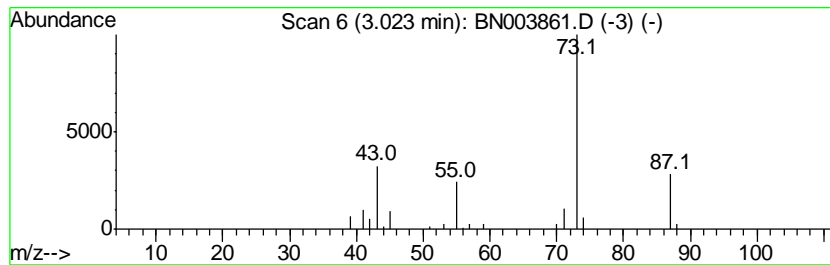
Quant Method : Z:\SVOASRV\HPCHEM1\BNA\_N\METHODS\SOM-EPA-BN121218MA.M  
 Quant Title : SVOA CALIBRATION

TIC Library : C:\Database\NIST11.L  
 TIC Integration Parameters: LSCINT.P

\*\*\*\*\*  
 Peak Number 1 Butane, 2-methoxy-2-methyl- Concentration Rank 1

R.T.	EstConc	Area	Relative to ISTD	R.T.
3.02	16.17 ng/ul	86452	1,4-Dichlorobenzene-d4	7.83

Hit#	of	Tentative ID	MW	MolForm	CAS#	Qual
1	5	Butane, 2-methoxy-2-methyl-	102	C6H14O	000994-05-8	78
2		Butane, 2-methoxy-2-methyl-	102	C6H14O	000994-05-8	74
3		2,2,4-Trimethyl-3-pentanol	130	C8H18O	005162-48-1	64
4		2,2,4-Trimethyl-3-pentanol	130	C8H18O	005162-48-1	64
5		Pentane, 3-methoxy-	102	C6H14O	036839-67-5	23



Data Path : Z:\SVOASRV\HPCHEM1\BNA\_N\DATA\BN121218\  
Data File : BN003861.D  
Acq On : 12 Dec 2018 21:09  
Operator : JU/SJ  
Sample : J6228-14  
Misc :  
ALS Vial : 11 Sample Multiplier: 1

Instrument :  
BNA\_N  
ClientSampleId :  
F9E49

Quant Method : Z:\SVOASRV\HPCHEM1\BNA\_N\METHODS\SOM-EPA-BN121218MA.M  
Quant Title : SVOA CALIBRATION

TIC Library : C:\Database\NIST11.L  
TIC Integration Parameters: LSCINT.P

TIC Top Hit name	RT	EstConc	Units	Response	--Internal Standard--			
					#	RT	Resp	Conc
Butane, 2-methoxy...	3.02	16.2	ng/ul	86452	1	7.83	106956	20.0