

Data Path : Z:\SVOASRV\HPCHEM1\BNA N\DATA\BN121218\
 Data File : BN003875.D
 Acq On : 13 Dec 2018 05:19
 Operator : JU/SJ
 Sample : J6228-17
 Misc :
 ALS Vial : 24 Sample Multiplier: 1

Instrument :
 BNA_N
 ClientSampleId :
 F9E52

Integration Parameters: LSCINT.P

Integrator: RTE
 Smoothing : OFF Filtering: 5
 Sampling : 1 Min Area: 1 % of largest Peak
 Start Thrs: 0.2 Max Peaks: 100
 Stop Thrs : 0 Peak Location: TOP

If leading or trailing edge < 100 prefer < Baseline drop else tangent >
 Peak separation: 5

Method : Z:\SVOASRV\HPCHEM1\BNA_N\METHODS\SOM-EPA-BN121218MA.M
 Title : SVOA CALIBRATION

Signal : TIC

peak #	R.T. min	first scan	max scan	last scan	PK TY	peak height	corr. area	corr. % max.	% of total
1	3.017	3	5	27	rVB	335401	506312	54.73%	6.005%
2	6.987	674	680	690	rBB2	62979	124011	13.40%	1.471%
3	7.164	705	710	719	rBB	52161	79675	8.61%	0.945%
4	7.358	738	743	750	rBB	66021	100732	10.89%	1.195%
5	7.828	818	823	830	rBB	80708	126770	13.70%	1.503%
6	8.522	936	941	950	rBB	74111	113147	12.23%	1.342%
7	8.999	1016	1022	1028	rBB	65171	104927	11.34%	1.244%
8	9.710	1138	1143	1150	rBB	52858	83234	9.00%	0.987%
9	10.240	1227	1233	1243	rBB	88884	140277	15.16%	1.664%
10	10.628	1292	1299	1307	rBB	136668	228512	24.70%	2.710%
11	10.769	1317	1323	1335	rBV	73823	124471	13.45%	1.476%
12	13.869	1845	1850	1854	rBV	189842	246492	26.64%	2.923%
13	13.916	1854	1858	1863	rVB	52601	67622	7.31%	0.802%
14	14.163	1893	1900	1912	rBV	218892	317757	34.35%	3.768%
15	14.469	1945	1952	1959	rBV2	228166	347712	37.58%	4.124%
16	14.663	1979	1985	1997	rBV	66516	104535	11.30%	1.240%
17	15.457	2114	2120	2126	rBV	311695	426310	46.08%	5.056%
18	15.581	2136	2141	2147	rVB	73486	95345	10.31%	1.131%
19	17.210	2412	2418	2423	rBV2	337435	464105	50.17%	5.504%
20	17.310	2429	2435	2444	rVB	345102	477217	51.58%	5.660%
21	18.081	2561	2566	2571	rBV	45716	63668	6.88%	0.755%
22	18.128	2571	2574	2578	rVB	6690	10322	1.12%	0.122%
23	19.233	2752	2762	2764	rBV2	5571	10622	1.15%	0.126%
24	19.269	2764	2768	2773	rVB	12682	18403	1.99%	0.218%
25	19.357	2779	2783	2790	rBV	32629	51459	5.56%	0.610%
26	19.504	2803	2808	2813	rVB2	80386	85792	9.27%	1.017%
27	19.604	2819	2825	2836	rVB	477629	661120	71.46%	7.840%
28	20.469	2968	2972	2976	rBV	29646	36130	3.91%	0.428%
29	20.510	2976	2979	2983	rVV	12841	18048	1.95%	0.214%
30	20.551	2983	2986	2991	rVB	69025	69453	7.51%	0.824%
31	21.110	3072	3081	3088	rBV8	19190	65719	7.10%	0.779%
32	21.392	3123	3129	3133	rBV	589022	739056	79.88%	8.765%
33	21.427	3133	3135	3139	rVB	15539	17604	1.90%	0.209%
34	21.510	3147	3149	3153	rVB2	11007	10730	1.16%	0.127%

Data Path : Z:\SVOASRV\HPCHEM1\BNA_N\DATA\BN121218\
Data File : BN003875.D
Acq On : 13 Dec 2018 05:19
Operator : JU/SJ
Sample : J6228-17
Misc :
ALS Vial : 24 Sample Multiplier: 1

Instrument :
BNA_N
ClientSampleId :
F9E52

Integration Parameters: LSCINT.P
Integrator: RTE
Smoothing : OFF Filtering: 5
Sampling : 1 Min Area: 1 % of largest Peak
Start Thrs: 0.2 Max Peaks: 100
Stop Thrs : 0 Peak Location: TOP

If leading or trailing edge < 100 prefer < Baseline drop else tangent >
Peak separation: 5

Method : Z:\SVOASRV\HPCHEM1\BNA_N\METHODS\SOM-EPA-BN121218MA.M
Title : SVOA CALIBRATION

35	22.433	3302	3306	3313	rVB3	21475	30403	3.29%	0.361%
36	22.945	3388	3393	3398	rVB3	40515	64685	6.99%	0.767%
37	23.557	3489	3497	3508	rVB	468527	925153	100.00%	10.972%
38	23.704	3515	3522	3537	rVB2	432797	882052	95.34%	10.461%
39	24.198	3601	3606	3611	rVB	38200	70221	7.59%	0.833%
40	24.968	3732	3737	3743	rVB	24999	48893	5.28%	0.580%
41	25.863	3884	3889	3897	rVB2	21309	50866	5.50%	0.603%
42	26.233	3944	3952	3963	rVB2	79715	222573	24.06%	2.640%

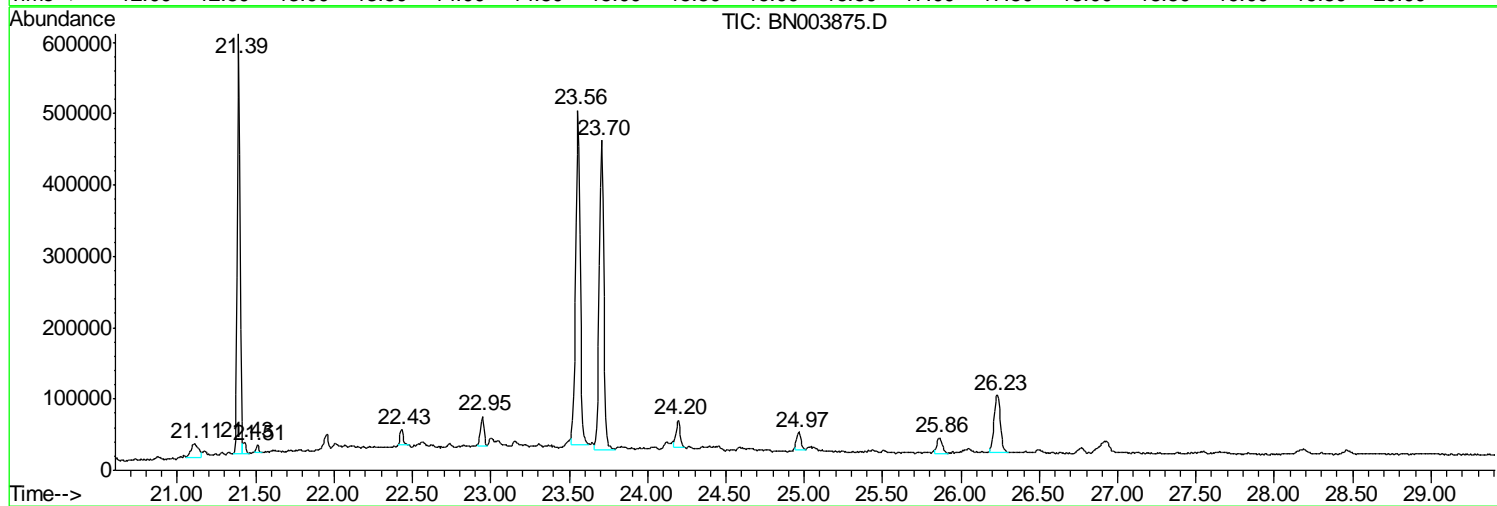
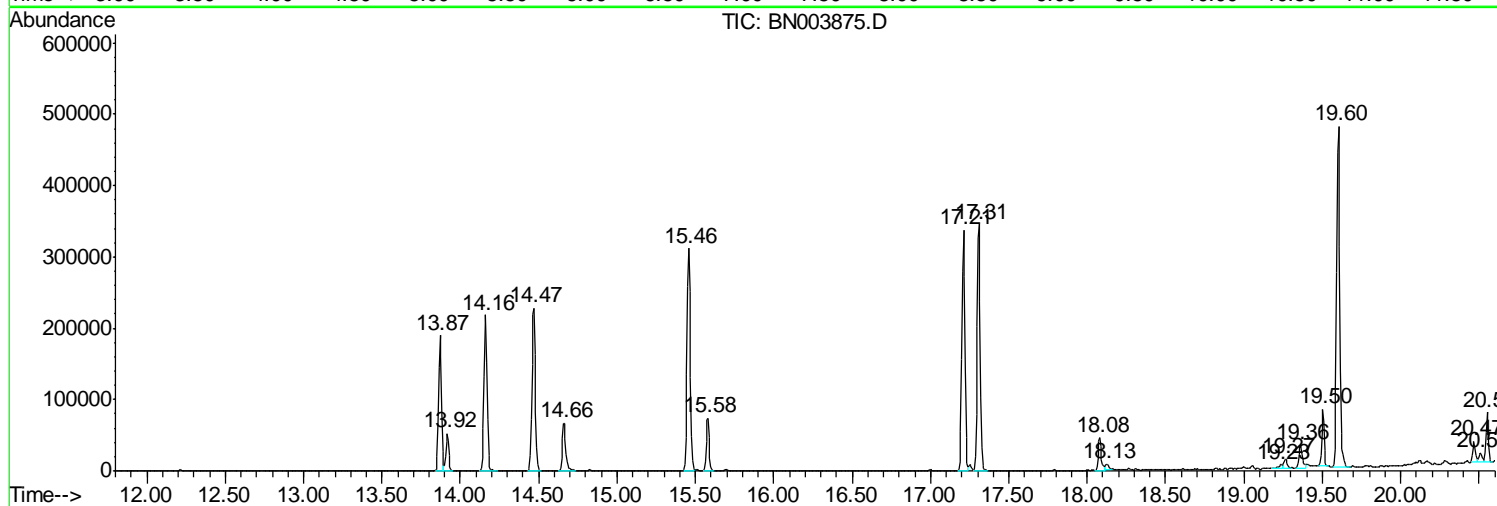
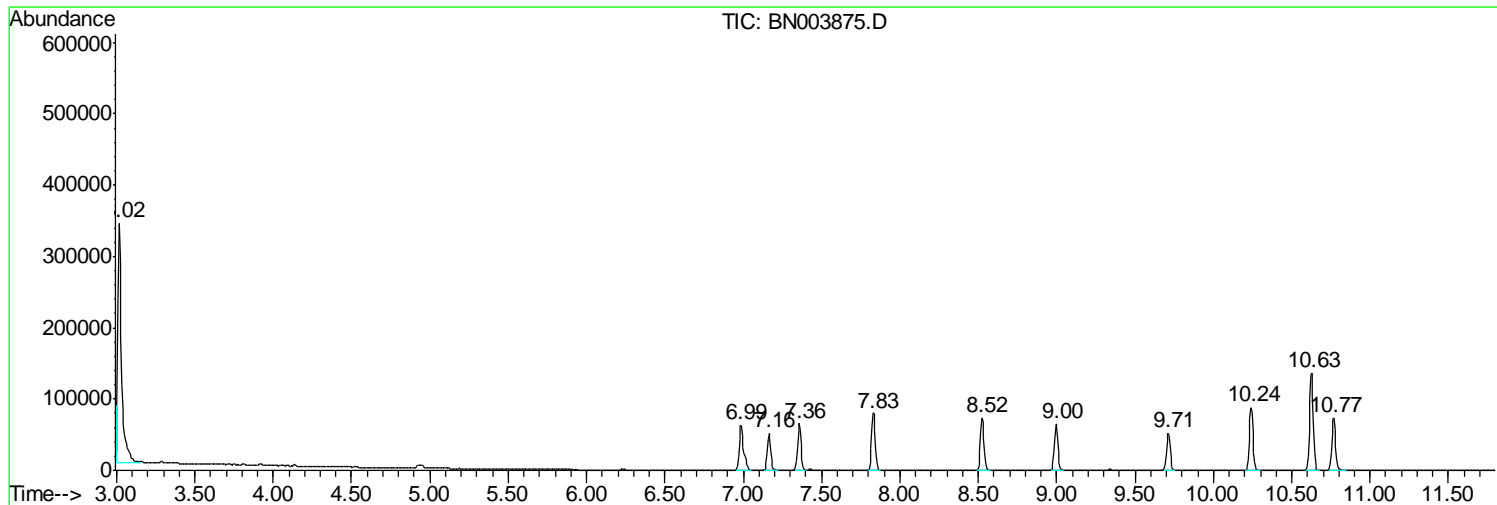
Sum of corrected areas: 8432135

Data Path : Z:\SVOASRV\HPCHEM1\BNA N\DATA\BN121218\
 Data File : BN003875.D
 Acq On : 13 Dec 2018 05:19
 Operator : JU/SJ
 Sample : J6228-17
 Misc :
 ALS Vial : 24 Sample Multiplier: 1

Instrument :
 BNA_N
 ClientSampleId :
 F9E52

Quant Method : Z:\SVOASRV\HPCHEM1\BNA_N\METHODS\SOM-EPA-BN121218MA.M
 Quant Title : SVOA CALIBRATION

TIC Library : C:\Database\NIST11.L
 TIC Integration Parameters: LSCINT.P



Data Path : Z:\SVOASRV\HPCHEM1\BNA N\DATA\BN121218\
 Data File : BN003875.D
 Acq On : 13 Dec 2018 05:19
 Operator : JU/SJ
 Sample : J6228-17
 Misc :
 ALS Vial : 24 Sample Multiplier: 1

Instrument :
 BNA_N
 ClientSampleID :
 F9E52

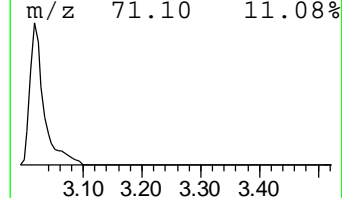
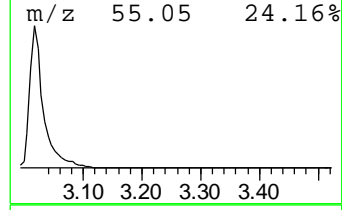
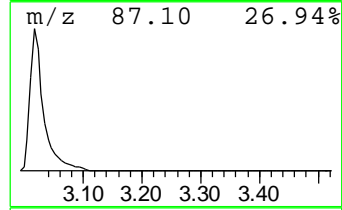
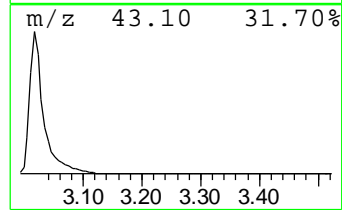
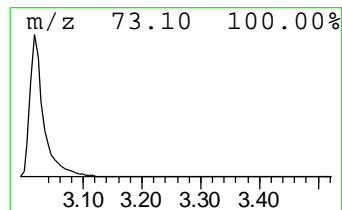
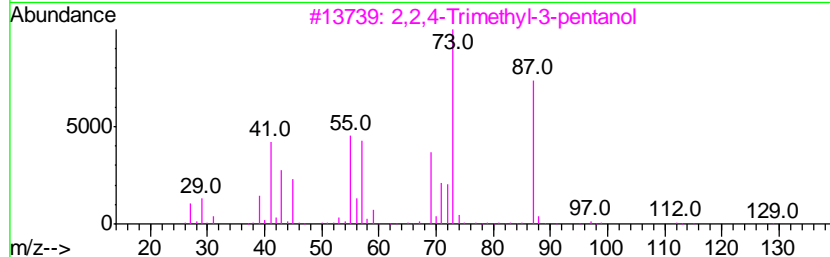
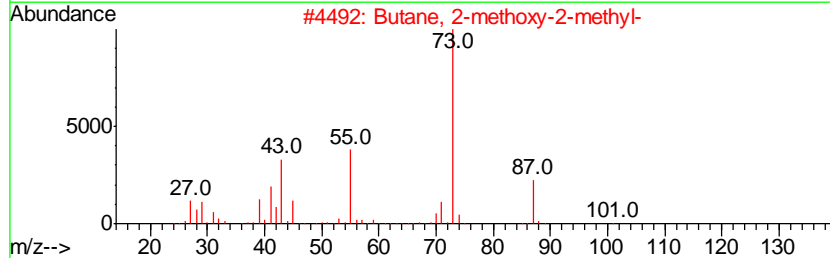
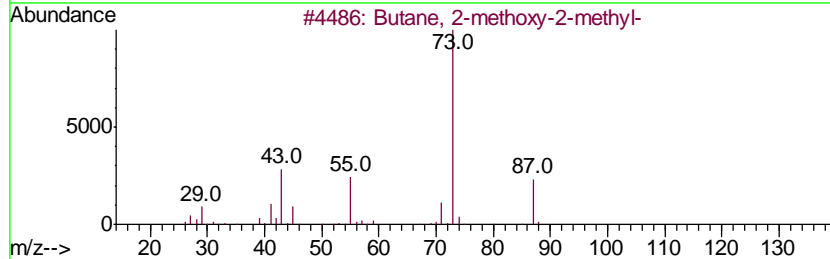
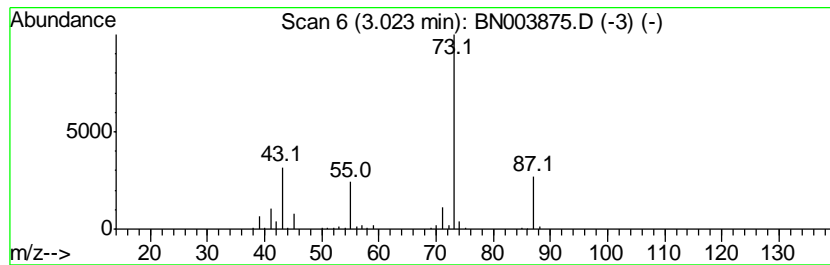
Quant Method : Z:\SVOASRV\HPCHEM1\BNA_N\METHODS\SOM-EPA-BN121218MA.M
 Quant Title : SVOA CALIBRATION

TIC Library : C:\Database\NIST11.L
 TIC Integration Parameters: LSCINT.P

 Peak Number 1 Butane, 2-methoxy-2-methyl- Concentration Rank 1

R.T.	EstConc	Area	Relative to ISTD	R.T.
3.02	79.88 ng/ul	506312	1,4-Dichlorobenzene-d4	7.83

Hit#	of	Tentative ID	MW	MolForm	CAS#	Qual
1	5	Butane, 2-methoxy-2-methyl-	102	C6H14O	000994-05-8	86
2		Butane, 2-methoxy-2-methyl-	102	C6H14O	000994-05-8	83
3		2,2,4-Trimethyl-3-pentanol	130	C8H18O	005162-48-1	39
4		1-(2-Methoxyethoxy)-2-methyl-2-p...	162	C8H18O3	1000364-24-4	25
5		Pentane, 3-methoxy-	102	C6H14O	036839-67-5	23



Data Path : Z:\SVOASRV\HPCHEM1\BNA N\DATA\BN121218\
 Data File : BN003875.D
 Acq On : 13 Dec 2018 05:19
 Operator : JU/SJ
 Sample : J6228-17
 Misc :
 ALS Vial : 24 Sample Multiplier: 1

Instrument :
 BNA_N
 ClientSampleID :
 F9E52

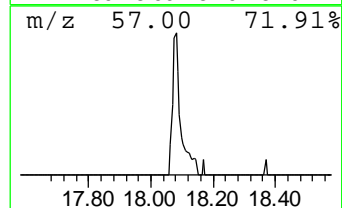
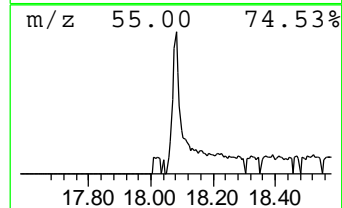
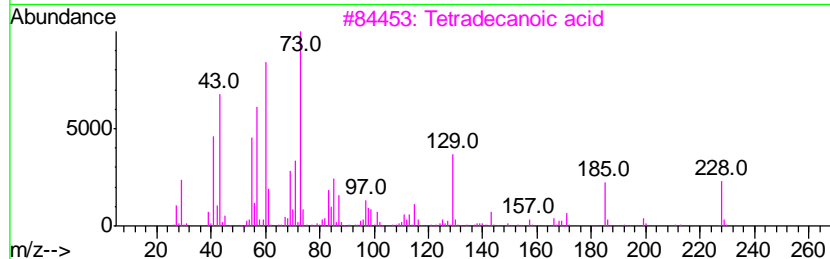
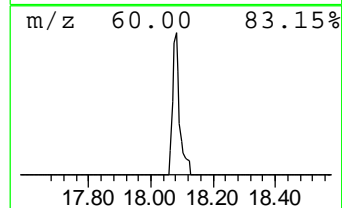
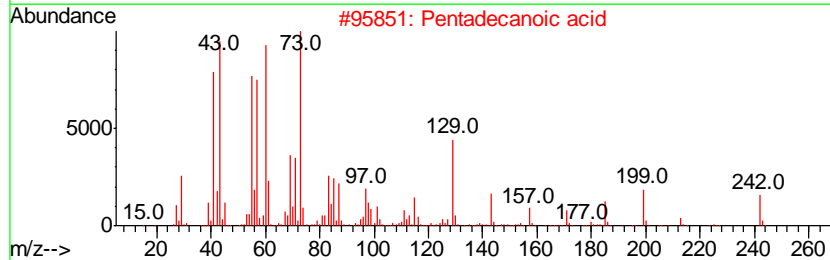
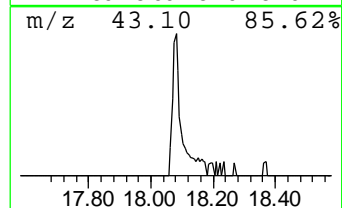
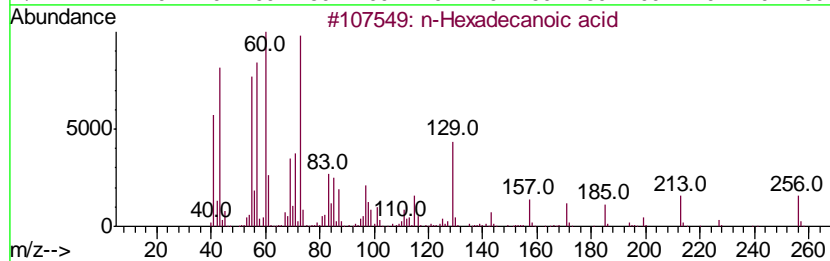
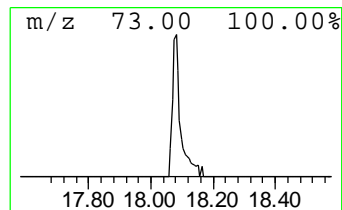
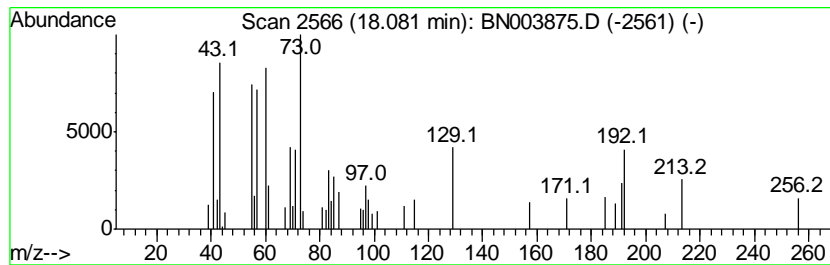
Quant Method : Z:\SVOASRV\HPCHEM1\BNA_N\METHODS\SOM-EPA-BN121218MA.M
 Quant Title : SVOA CALIBRATION

TIC Library : C:\Database\NIST11.L
 TIC Integration Parameters: LSCINT.P

 Peak Number 2 n-Hexadecanoic acid Concentration Rank 3

R.T.	EstConc	Area	Relative to ISTD	R.T.
18.08	2.74 ng/ul	63668	Phenanthrene-d10	17.21

Hit#	of	Tentative ID	MW	MolForm	CAS#	Qual
1	5	n-Hexadecanoic acid	256	C16H32O2	000057-10-3	99
2		Pentadecanoic acid	242	C15H30O2	001002-84-2	76
3		Tetradecanoic acid	228	C14H28O2	000544-63-8	53
4		Tetradecanoic acid	228	C14H28O2	000544-63-8	53
5		Tetradecanoic acid	228	C14H28O2	000544-63-8	53



Data Path : Z:\SVOASRV\HPCHEM1\BNA N\DATA\BN121218\
 Data File : BN003875.D
 Acq On : 13 Dec 2018 05:19
 Operator : JU/SJ
 Sample : J6228-17
 Misc :
 ALS Vial : 24 Sample Multiplier: 1

Instrument :
 BNA_N
 ClientSampled :
 F9E52

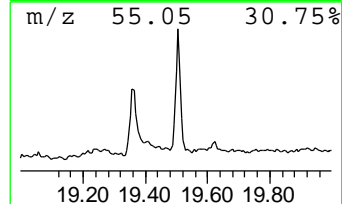
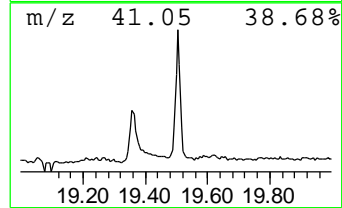
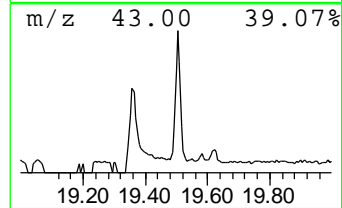
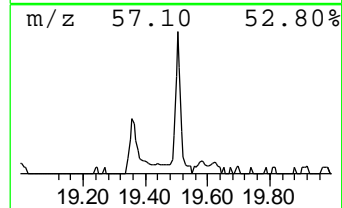
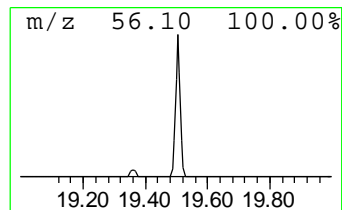
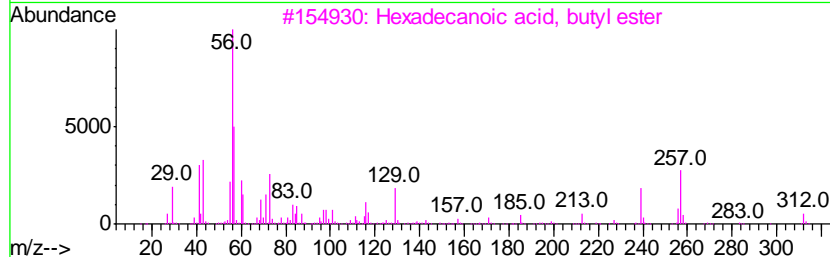
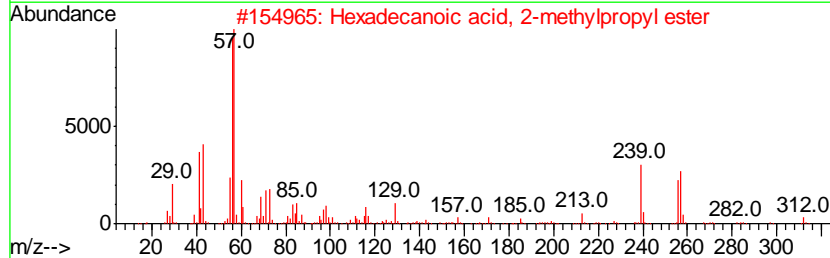
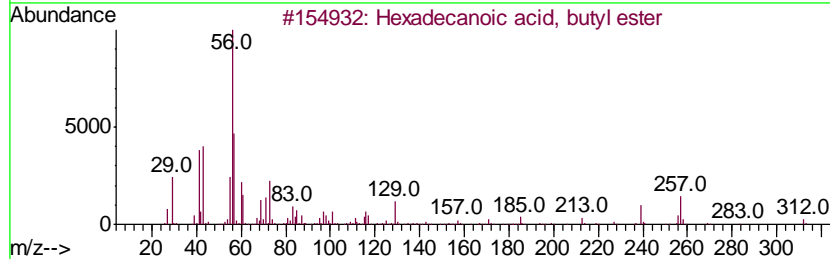
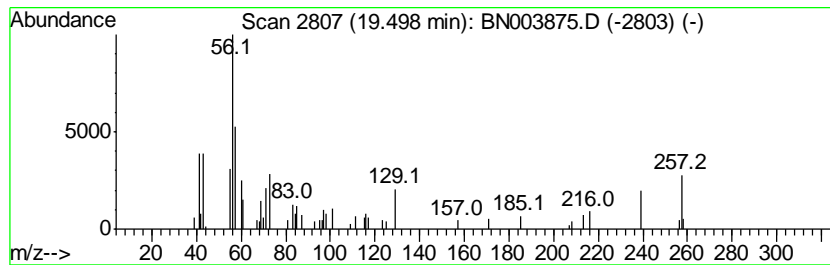
Quant Method : Z:\SVOASRV\HPCHEM1\BNA_N\METHODS\SOM-EPA-BN121218MA.M
 Quant Title : SVOA CALIBRATION

TIC Library : C:\Database\NIST11.L
 TIC Integration Parameters: LSCINT.P

 Peak Number 3 Hexadecanoic acid, butyl ester Concentration Rank 4

R.T.	EstConc	Area	Relative to ISTD	R.T.
19.50	2.32 ng/ul	85792	Chrysene-d12	21.39

Hit#	of	Tentative ID	MW	MolForm	CAS#	Qual
1	5	Hexadecanoic acid, butyl ester	312	C20H40O2	000111-06-8	98
2		Hexadecanoic acid, 2-methylpropy...	312	C20H40O2	000110-34-9	92
3		Hexadecanoic acid, butyl ester	312	C20H40O2	000111-06-8	91
4		Hexadecanoic acid, 1,1-dimethyle...	312	C20H40O2	031158-91-5	89
5		1-Heptene, 2-methyl-	112	C8H16	015870-10-7	27



Data Path : Z:\SVOASRV\HPCHEM1\BNA N\DATA\BN121218\
 Data File : BN003875.D
 Acq On : 13 Dec 2018 05:19
 Operator : JU/SJ
 Sample : J6228-17
 Misc :
 ALS Vial : 24 Sample Multiplier: 1

Instrument :
 BNA_N
 ClientSampleID :
 F9E52

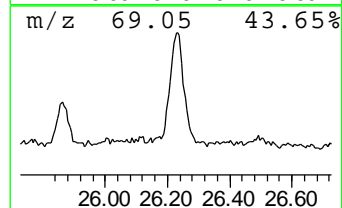
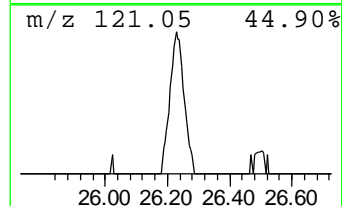
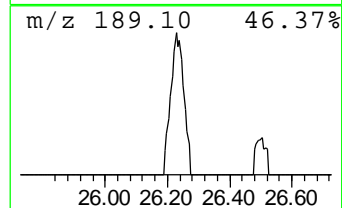
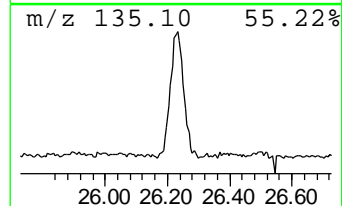
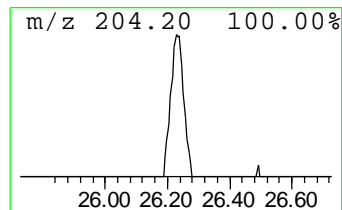
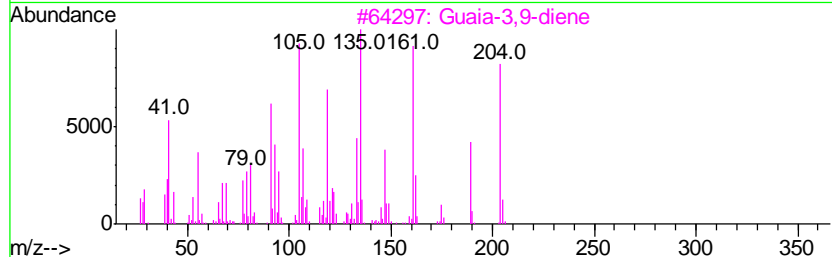
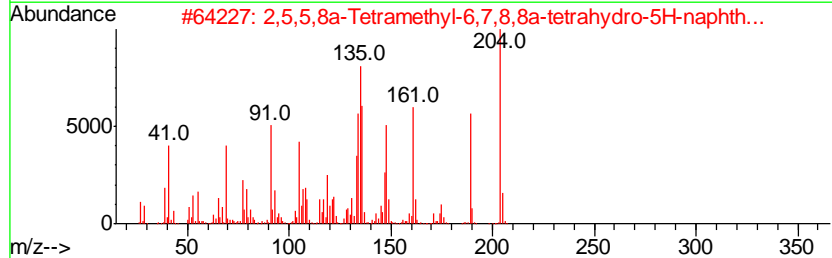
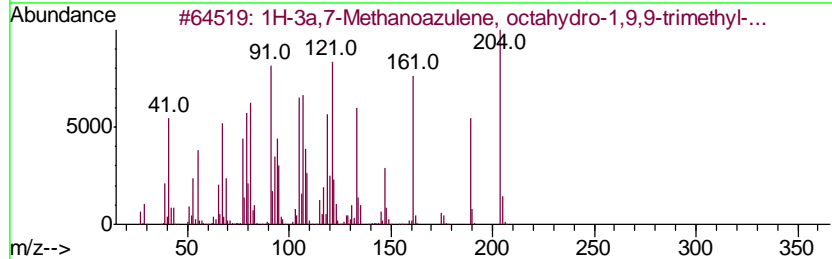
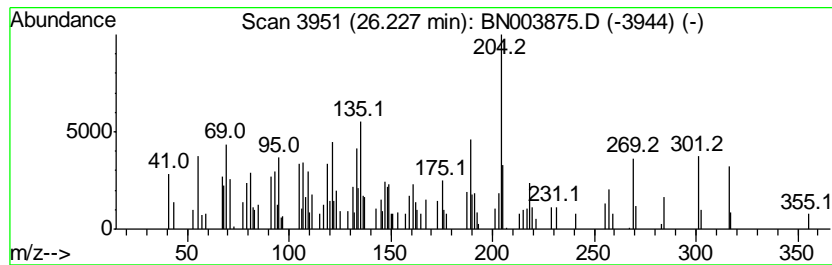
Quant Method : Z:\SVOASRV\HPCHEM1\BNA_N\METHODS\SOM-EPA-BN121218MA.M
 Quant Title : SVOA CALIBRATION

TIC Library : C:\Database\NIST11.L
 TIC Integration Parameters: LSCINT.P

 Peak Number 4 1H-3a,7-Methanoazulene, oct... Concentration Rank 2

R.T.	EstConc	Area	Relative to ISTD	R.T.
26.23	5.05 ng/ul	222573	Perylene-d12	23.70

Hit#	of	Tentative ID	MW	MolForm	CAS#	Qual
1	5	1H-3a,7-Methanoazulene, octahydr...	204	C15H24	000508-55-4	66
2		2,5,5,8a-Tetramethyl-6,7,8,8a-te...	204	C14H20O	124957-09-1	49
3		Guaia-3,9-diene	204	C15H24	000489-83-8	46
4		Naphthalene, 1,2,3,5,6,7,8,8a-oc...	204	C15H24	004630-07-3	43
5		1,1,4a-Trimethyl-5,6-dimethylene...	204	C15H24	1000193-60-8	42



Data Path : Z:\SVOASRV\HPCHEM1\BNA_N\DATA\BN121218\
Data File : BN003875.D
Acq On : 13 Dec 2018 05:19
Operator : JU/SJ
Sample : J6228-17
Misc :
ALS Vial : 24 Sample Multiplier: 1

Instrument :
BNA_N
ClientSampleId :
F9E52

Quant Method : Z:\SVOASRV\HPCHEM1\BNA_N\METHODS\SOM-EPA-BN121218MA.M
Quant Title : SVOA CALIBRATION

TIC Library : C:\Database\NIST11.L
TIC Integration Parameters: LSCINT.P

TIC Top Hit name	RT	EstConc	Units	Response	--Internal Standard--			
					#	RT	Resp	Conc
Butane, 2-methoxy...	3.02	79.9	ng/ul	506312	1	7.83	126770	20.0
n-Hexadecanoic acid	18.08	2.7	ng/ul	63668	4	17.21	464105	20.0
Hexadecanoic acid...	19.50	2.3	ng/ul	85792	5	21.39	739056	20.0
1H-3a,7-Methanoaz...	26.23	5.0	ng/ul	222573	6	23.70	882052	20.0