

Data Path : Z:\SVOASRV\HPCHEM1\BNA N\DATA\BN121319\  
 Data File : BN008972.D  
 Acq On : 13 Dec 2019 17:47  
 Operator : JU  
 Sample : K6089-14DL 2X  
 Misc :  
 ALS Vial : 12 Sample Multiplier: 1

**Instrument :**  
 BNA\_N  
**ClientSampleId :**  
 C0BR2DL

**Manual Integrations**  
**APPROVED**  
 mohammad  
 12/16/2019 12:23:55 PM

Quant Time: Dec 13 23:02:37 2019  
 Quant Method : Z:\SVOASRV\HPCHEM1\BNA N\METHODS\SOM-EPA-SIM-BN111519.M  
 Quant Title : ASP BNA STANDARDS FOR 5 POINT CALIBRATION  
 QLast Update : Fri Dec 13 22:56:27 2019  
 Response via : Initial Calibration

Internal Standards	R.T.	QIon	Response	Conc	Units	Dev(Min)
1) 1,4-Dichlorobenzene-d4	7.56	152	13558	0.40	ng/ul	0.00
2) Naphthalene-d8	10.31	136	46603	0.40	ng/ul	0.00
6) Acenaphthene-d10	14.18	164	21067	0.40	ng/ul	0.00
10) Phenanthrene-d10	16.92	188	32424	0.40	ng/ul	0.00
16) Chrysene-d12	21.13	240	14584	0.40	ng/ul	0.00
20) Perylene-d12	23.27	264	16534	0.40	ng/ul	0.00

System Monitoring Compounds	R.T.	QIon	Response	Conc	Units	Dev(Min)
4) 2-Methylnaphthalene-d10	11.90	152	6055	0.08	ng/ul	0.00
14) Fluoranthene-d10	18.96	212	7223	0.07	ng/ul	0.00

Target Compounds	R.T.	QIon	Response	Conc	Units	Ovalue
3) Naphthalene	10.36	128	123943	0.882	ng/ul	99
5) 2-Methylnaphthalene	11.98	142	101320	1.033	ng/ul	100
7) Acenaphthylene	13.90	152	11655	0.100	ng/ul#	85
9) Fluorene	15.24	166	3416	0.034	ng/ul#	54
12) Phenanthrene	16.97	178	94196	0.861	ng/ul	99
13) Anthracene	17.06	178	10174	0.098	ng/ul#	95
15) Fluoranthene	18.99	202	65970	0.491	ng/ul	100
17) Pyrene	19.35	202	61215	1.046	ng/ul	99
18) Benzo(a)anthracene	21.11	228	34082	0.581	ng/ul	91
19) Chrysene	21.16	228	45238m	0.785	ng/ul	
21) Benzo(b)fluoranthene	22.64	252	58771m	0.862	ng/ul	
22) Benzo(k)fluoranthene	22.68	252	16999m	0.251	ng/ul	
23) Benzo(a)pyrene	23.18	252	34298	0.536	ng/ul	98
24) Indeno(1,2,3-cd)pyrene	25.38	276	34640	0.463	ng/ul	90
25) Dibenzo(a,h)anthracene	25.39	278	9688	0.160	ng/ul#	81
26) Benzo(a,h,i)perylene	26.02	276	36951	0.590	ng/ul	98

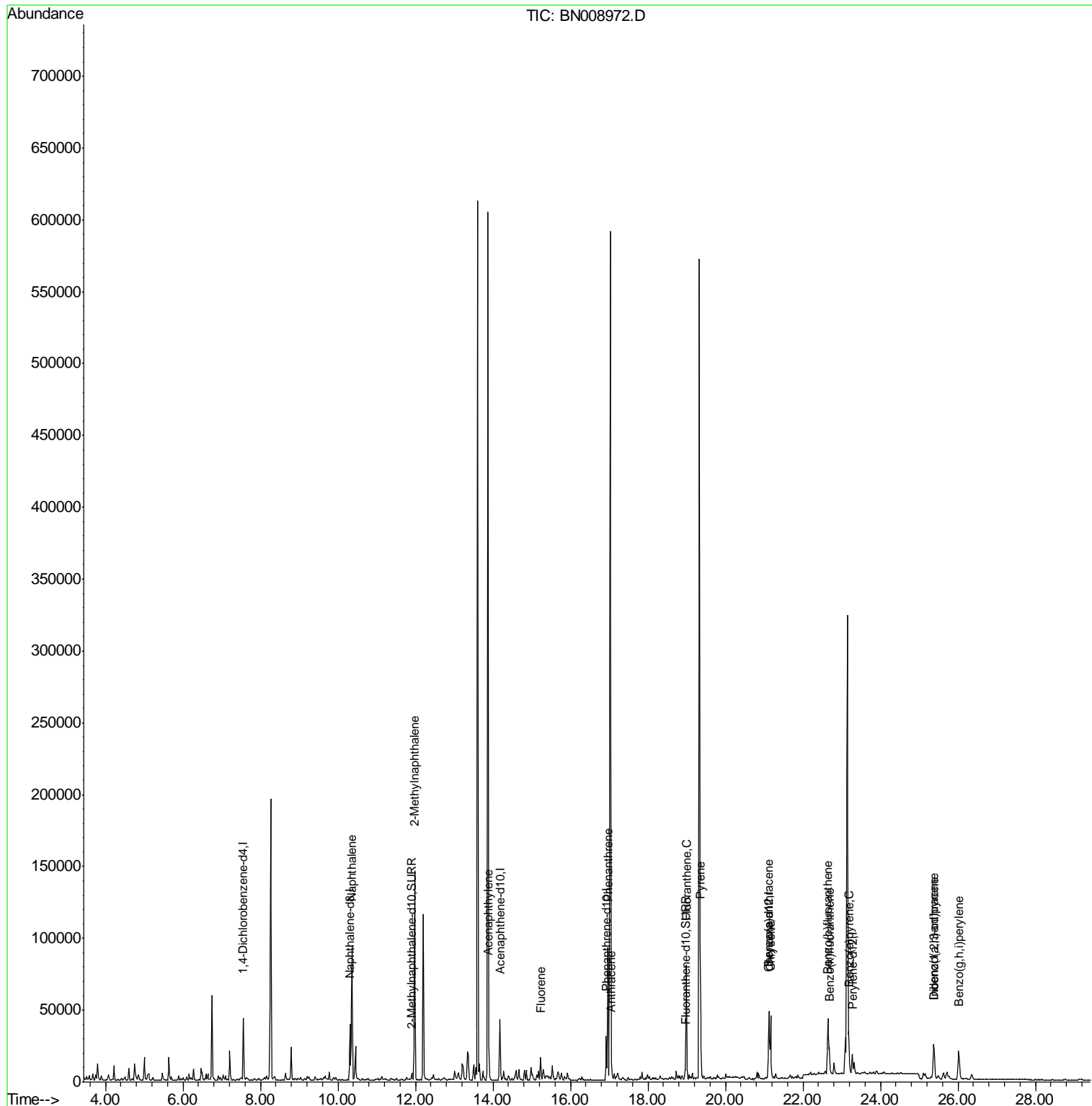
(#) = qualifier out of range (m) = manual integration (+) = signals summed

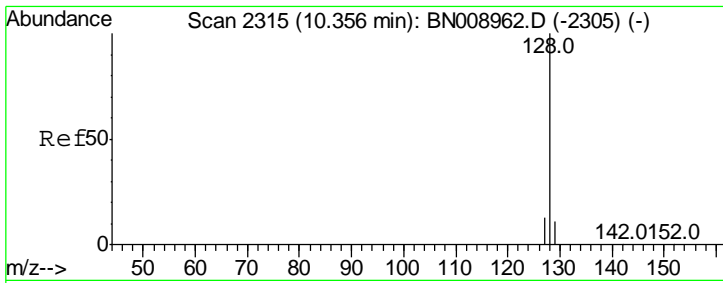
Data Path : Z:\SVOASRV\HPCHEM1\BNA N\DATA\BN121319\  
 Data File : BN008972.D  
 Acq On : 13 Dec 2019 17:47  
 Operator : JU  
 Sample : K6089-14DL 2X  
 Misc :  
 ALS Vial : 12 Sample Multiplier: 1

Instrument :  
 BNA\_N  
 ClientSampled :  
 C0BR2DL

Manual Integrations  
 APPROVED  
 mohammad  
 12/16/2019 12:23:55 PM

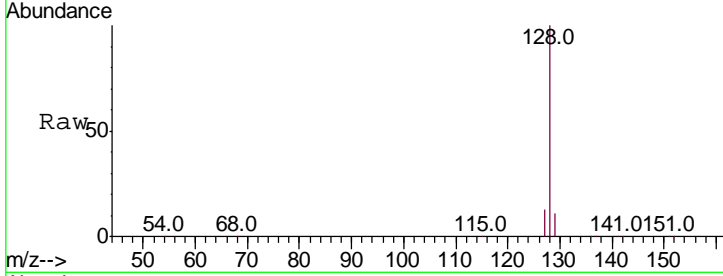
Quant Time: Dec 13 23:02:37 2019  
 Quant Method : Z:\SVOASRV\HPCHEM1\BNA N\METHODS\SOM-EPA-SIM-BN111519.M  
 Quant Title : ASP BNA STANDARDS FOR 5 POINT CALIBRATION  
 QLast Update : Fri Dec 13 22:56:27 2019  
 Response via : Initial Calibration





#3  
 Naphthalene  
 Concen: 0.882 ng/ul  
 RT: 10.36 min Scan# 2315  
 Delta R.T. -0.00 min  
 Lab File: BN008972.D  
 Acq: 13 Dec 2019 17:47

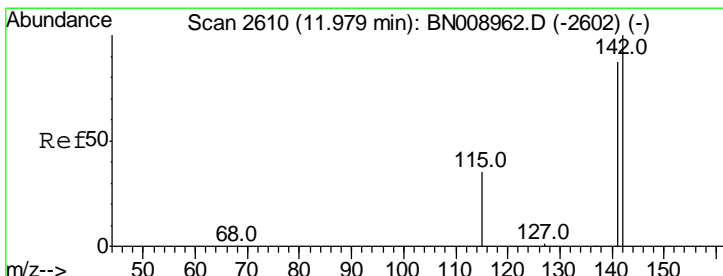
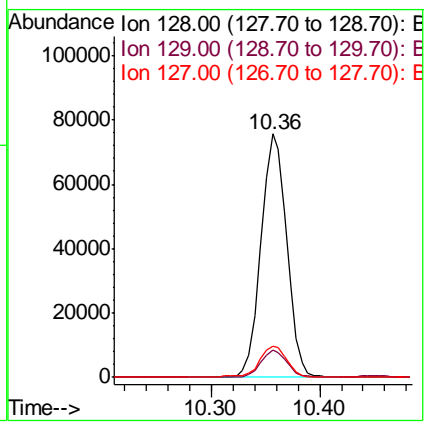
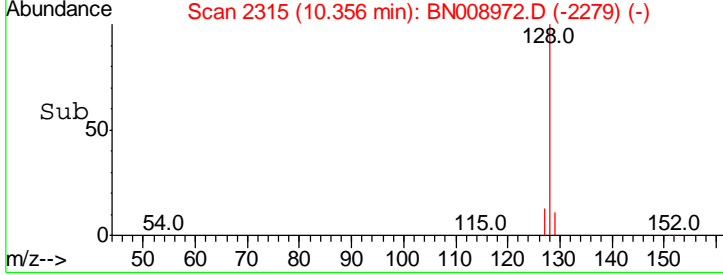
**Instrument :**  
 BNA\_N  
**ClientSampled :**  
 C0BR2DL



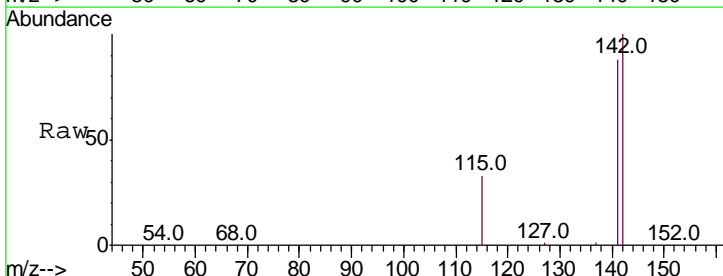
Tgt Ion: 128 Resp: 123943

Ion	Ratio	Lower	Upper
128	100		
129	11.0	9.1	13.7
127	13.0	10.7	16.1

**Manual Integrations**  
**APPROVED**  
 mohammad  
 12/16/2019 12:23:55 PM

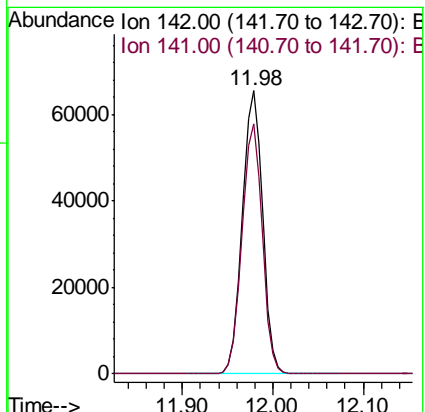
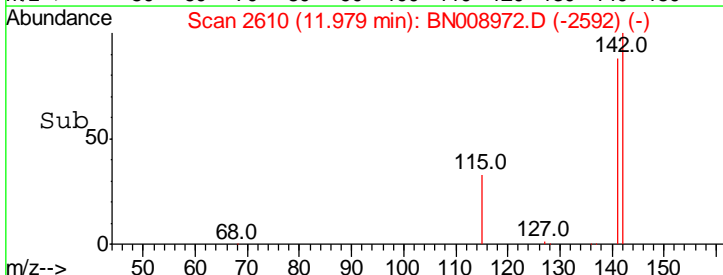


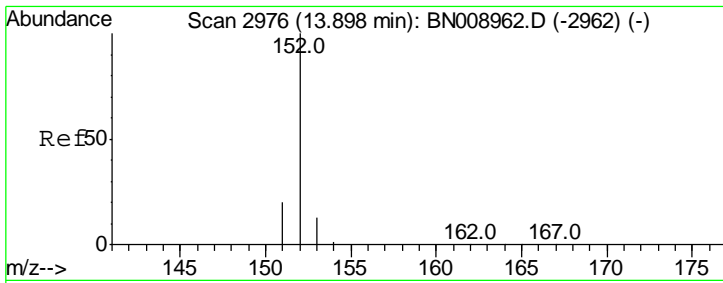
#5  
 2-Methylnaphthalene  
 Concen: 1.033 ng/ul  
 RT: 11.98 min Scan# 2610  
 Delta R.T. -0.00 min  
 Lab File: BN008972.D  
 Acq: 13 Dec 2019 17:47



Tgt Ion: 142 Resp: 101320

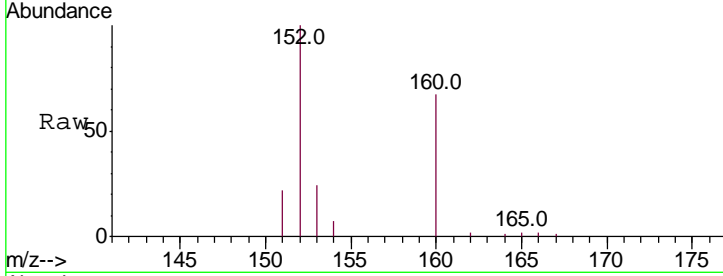
Ion	Ratio	Lower	Upper
142	100		
141	88.0	70.1	105.1





#7  
 Acenaphthylene  
 Concen: 0.100 ng/ul  
 RT: 13.90 min Scan# 2976  
 Delta R.T. 0.00 min  
 Lab File: BN008972.D  
 Acq: 13 Dec 2019 17:47

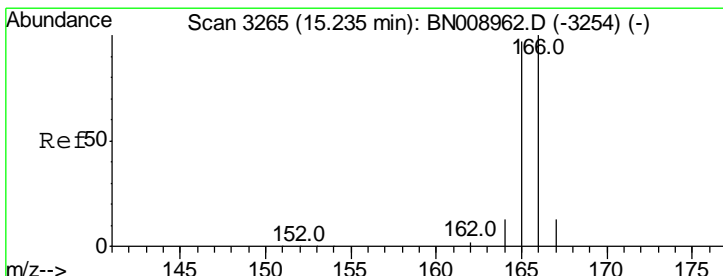
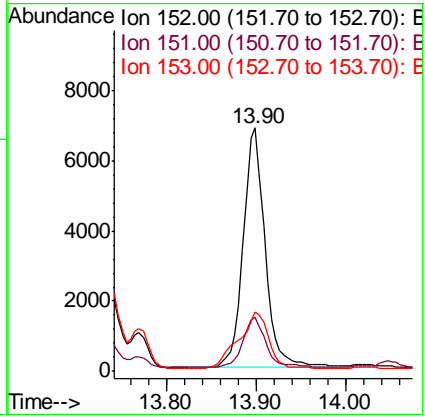
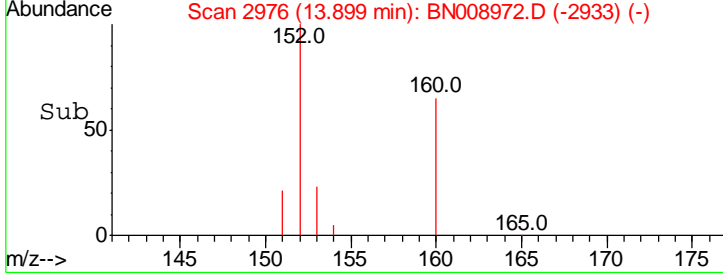
**Instrument :**  
 BNA\_N  
**ClientSampled :**  
 C0BR2DL



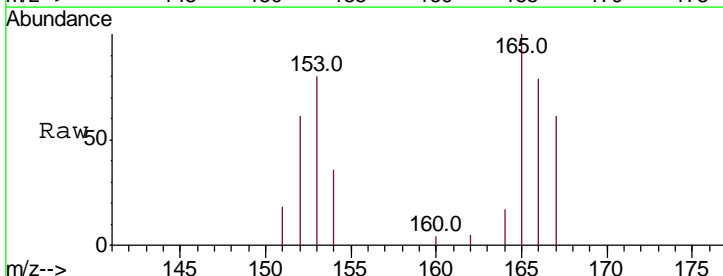
Tgt Ion: 152 Resp: 11655

Ion	Ratio	Lower	Upper
152	100		
151	22.4	15.8	23.6
153	24.1	10.6	15.8#

**Manual Integrations**  
**APPROVED**  
 mohammad  
 12/16/2019 12:23:55 PM

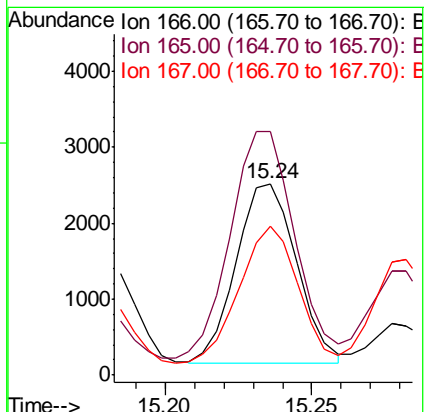
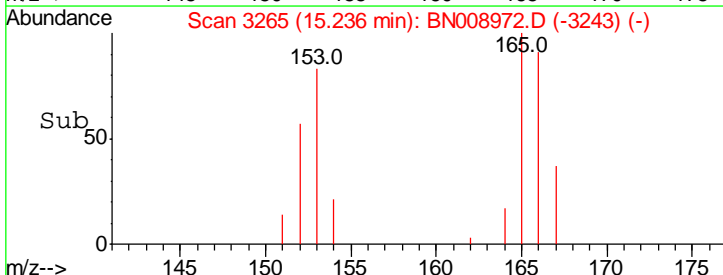


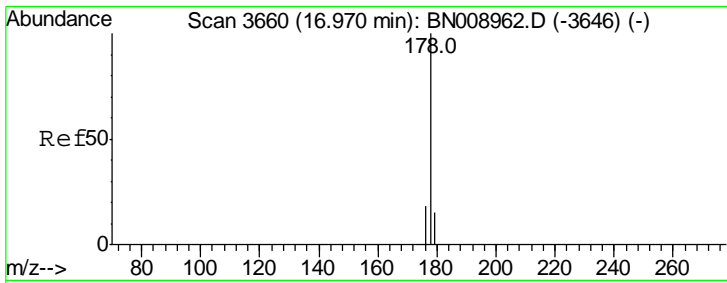
#9  
 Fluorene  
 Concen: 0.034 ng/ul  
 RT: 15.24 min Scan# 3265  
 Delta R.T. 0.00 min  
 Lab File: BN008972.D  
 Acq: 13 Dec 2019 17:47



Tgt Ion: 166 Resp: 3416

Ion	Ratio	Lower	Upper
166	100		
165	126.9	77.7	116.5#
167	77.7	11.1	16.7#





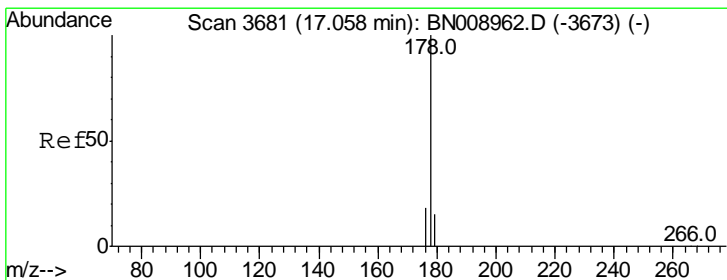
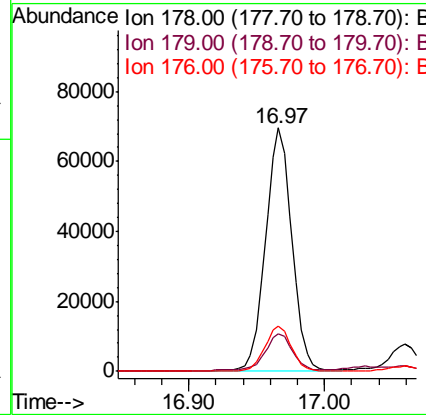
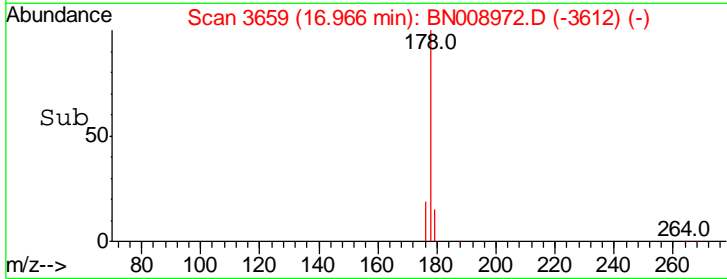
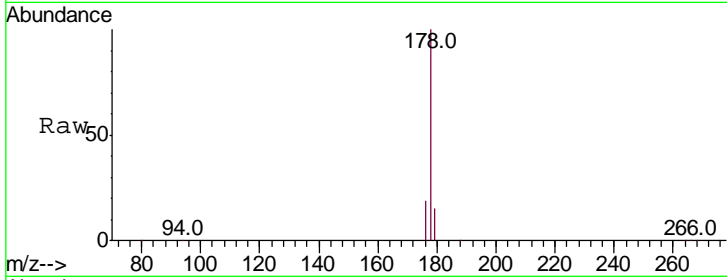
#12  
 Phenanthrene  
 Concen: 0.861 ng/ul  
 RT: 16.97 min Scan# 3659  
 Delta R.T. -0.00 min  
 Lab File: BN008972.D  
 Acq: 13 Dec 2019 17:47

Instrument :  
 BNA\_N  
 ClientSampled :  
 C0BR2DL

Tgt Ion	Resp	Lower	Upper
178	100		
179	15.4	12.6	18.8
176	18.7	15.3	22.9

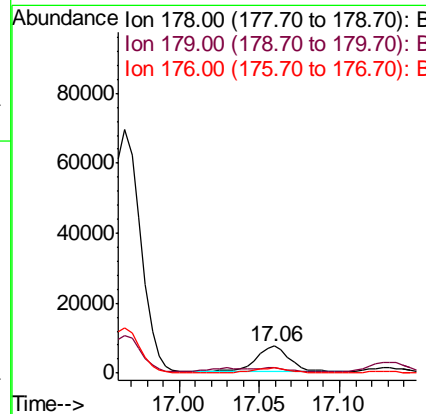
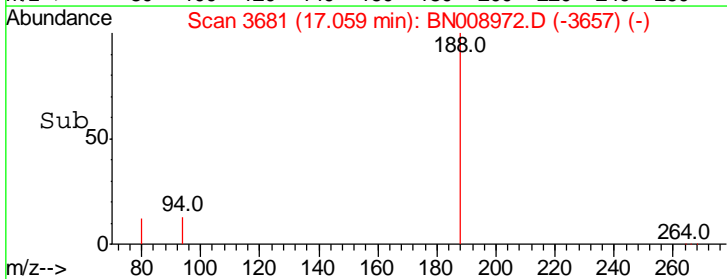
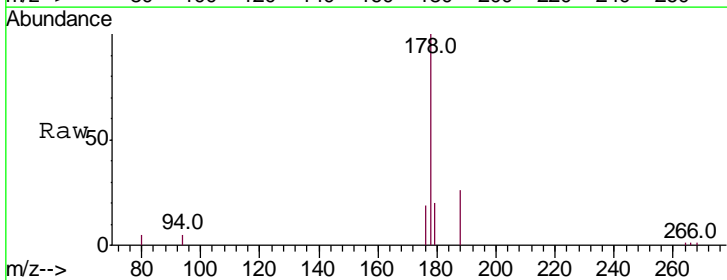
Manual Integrations  
 APPROVED

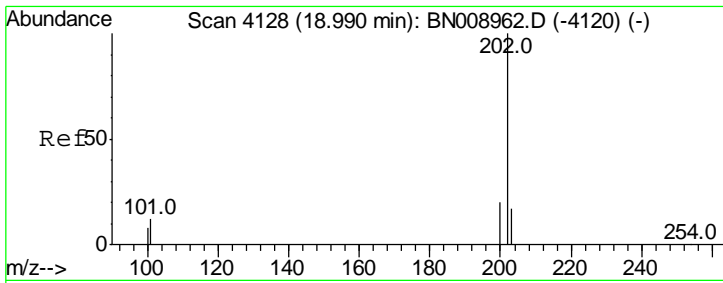
mohammad  
 12/16/2019 12:23:55 PM



#13  
 Anthracene  
 Concen: 0.098 ng/ul  
 RT: 17.06 min Scan# 3681  
 Delta R.T. 0.00 min  
 Lab File: BN008972.D  
 Acq: 13 Dec 2019 17:47

Tgt Ion	Resp	Lower	Upper
178	100		
179	19.9	12.2	18.4#
176	18.7	14.7	22.1



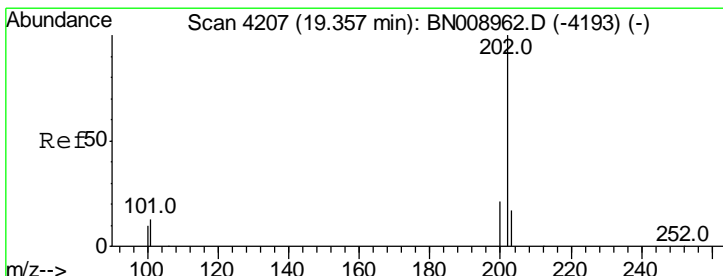
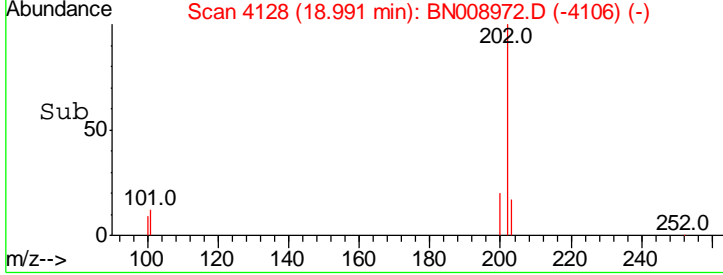
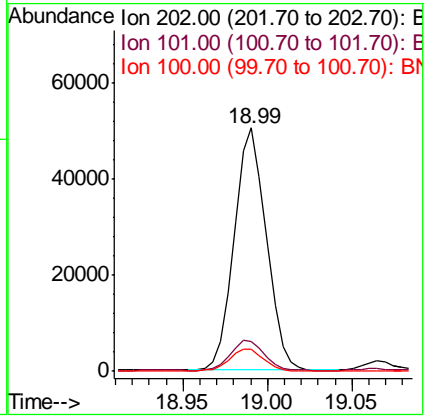
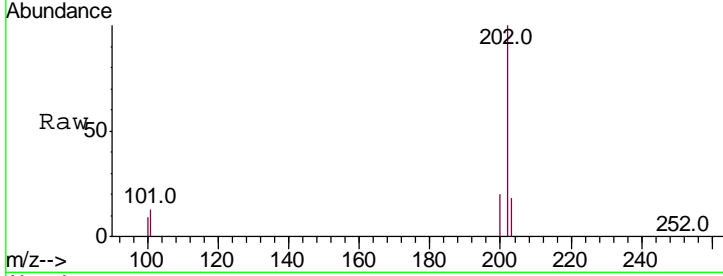


#15  
 Fluoranthene  
 Concen: 0.491 ng/ul  
 RT: 18.99 min Scan# 4128  
 Delta R.T. 0.00 min  
 Lab File: BN008972.D  
 Acq: 13 Dec 2019 17:47

**Instrument :**  
 BNA\_N  
**ClientSampled :**  
 C0BR2DL

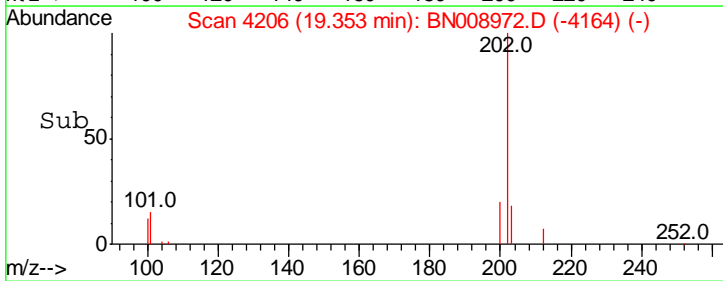
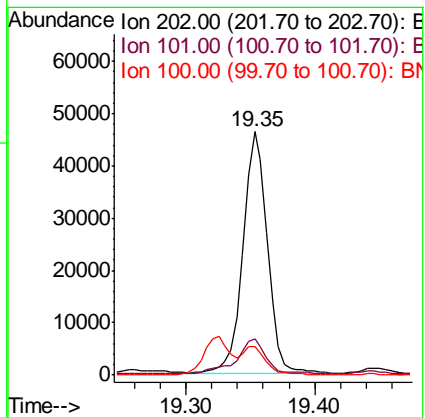
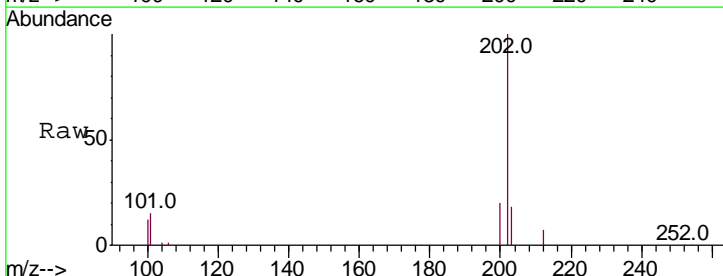
Tgt Ion	Ratio	Lower	Upper
202	100		
101	12.5	0.0	32.4
100	9.0	0.0	29.2

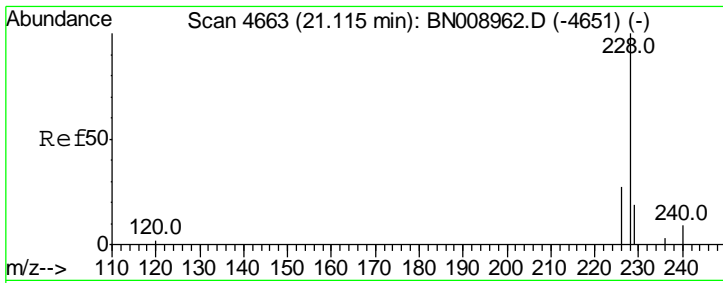
**Manual Integrations**  
**APPROVED**  
 mohammad  
 12/16/2019 12:23:55 PM



#17  
 Pyrene  
 Concen: 1.046 ng/ul  
 RT: 19.35 min Scan# 4206  
 Delta R.T. -0.00 min  
 Lab File: BN008972.D  
 Acq: 13 Dec 2019 17:47

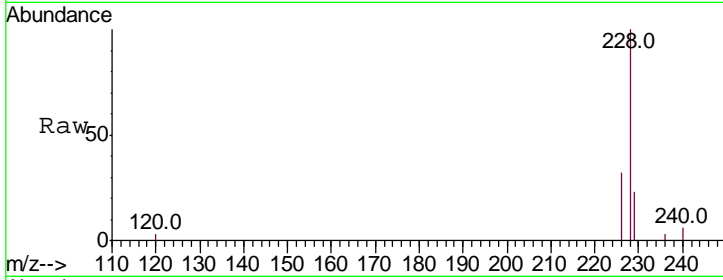
Tgt Ion	Ratio	Lower	Upper
202	100		
101	14.9	12.2	18.4
100	11.9	9.5	14.3





#18  
 Benzo(a)anthracene  
 Concen: 0.581 ng/ul  
 RT: 21.11 min Scan# 4662  
 Delta R.T. -0.00 min  
 Lab File: BN008972.D  
 Acq: 13 Dec 2019 17:47

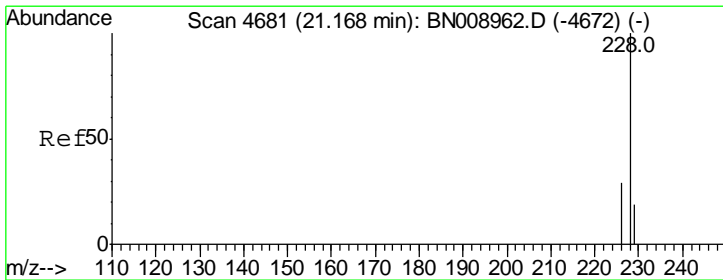
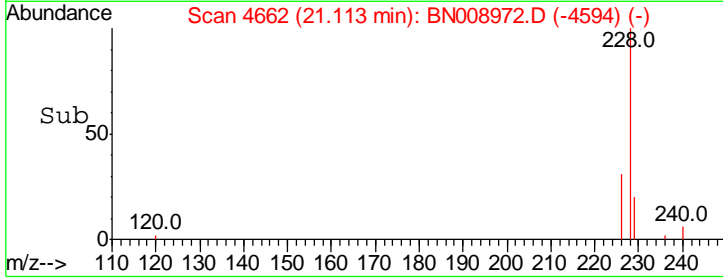
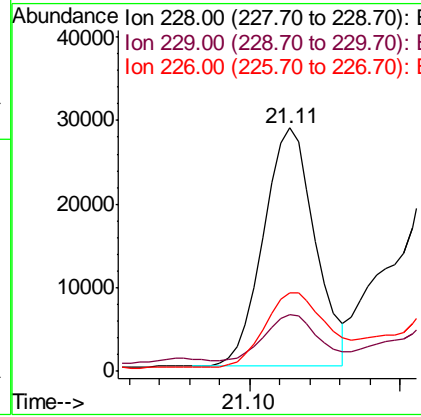
Instrument :  
 BNA\_N  
 ClientSampled :  
 C0BR2DL



Tgt Ion: 228 Resp: 34082

Ion	Ratio	Lower	Upper
228	100		
229	23.4	15.7	23.5
226	32.0	21.5	32.3

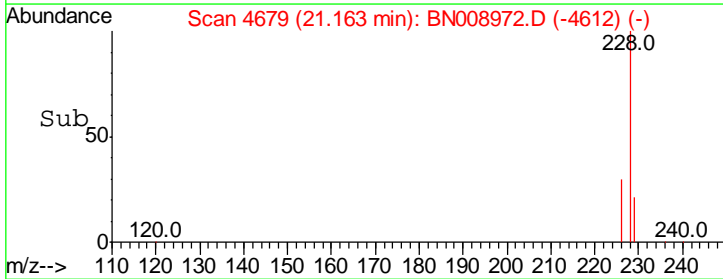
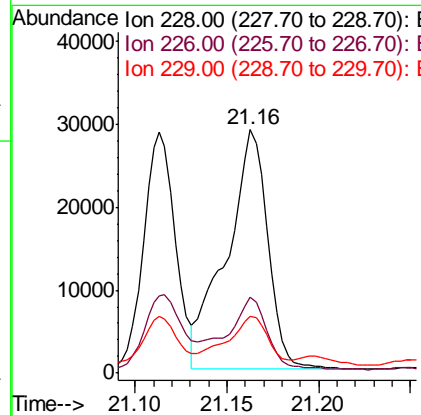
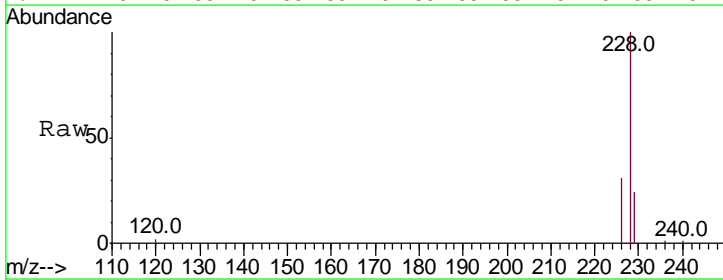
Manual Integrations  
 APPROVED  
 mohammad  
 12/16/2019 12:23:55 PM

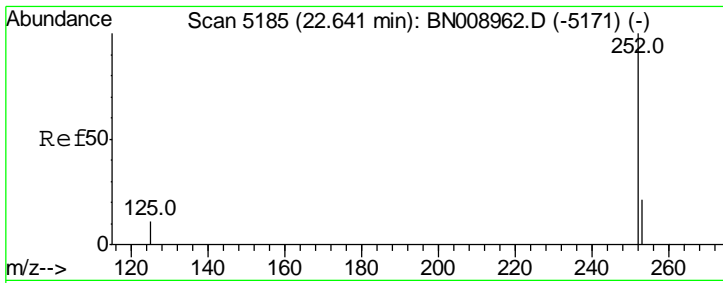


#19  
 Chrysene  
 Concen: 0.785 ng/ul m  
 RT: 21.16 min Scan# 4679  
 Delta R.T. -0.01 min  
 Lab File: BN008972.D  
 Acq: 13 Dec 2019 17:47

Tgt Ion: 228 Resp: 45238

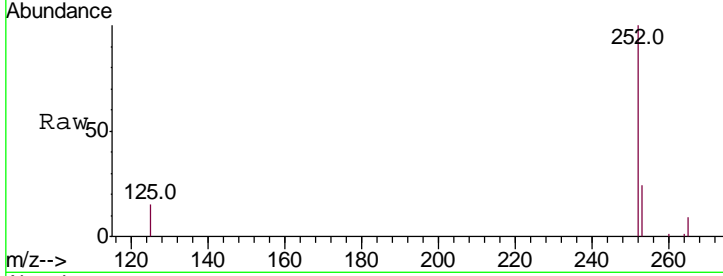
Ion	Ratio	Lower	Upper
228	100		
226	31.0	23.8	35.6
229	23.5	15.6	23.4#





#21  
 Benzo(b)fluoranthene  
 Concen: 0.862 ng/ul m  
 RT: 22.64 min Scan# 5185  
 Delta R.T. 0.00 min  
 Lab File: BN008972.D  
 Acq: 13 Dec 2019 17:47

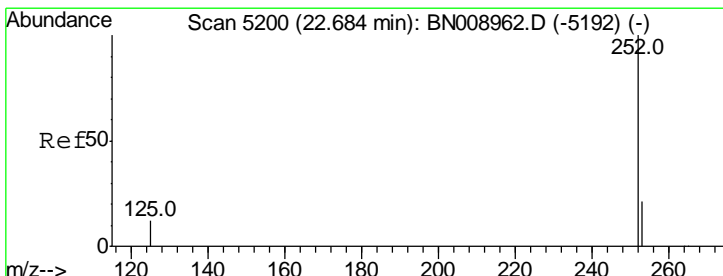
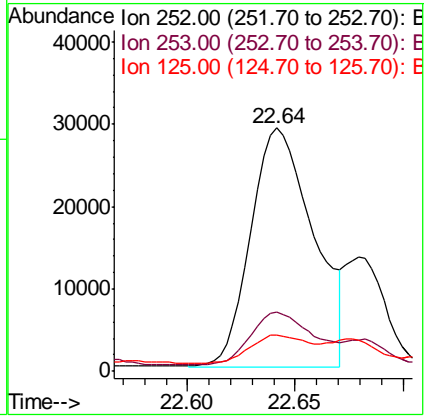
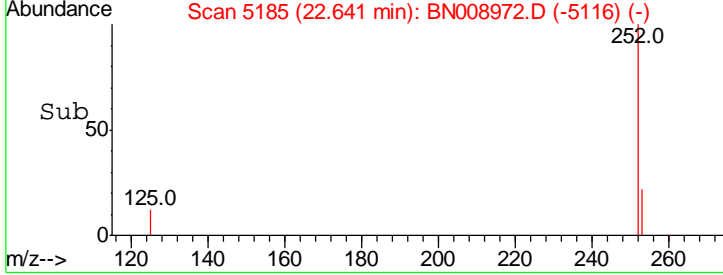
**Instrument :**  
 BNA\_N  
**ClientSampled :**  
 C0BR2DL



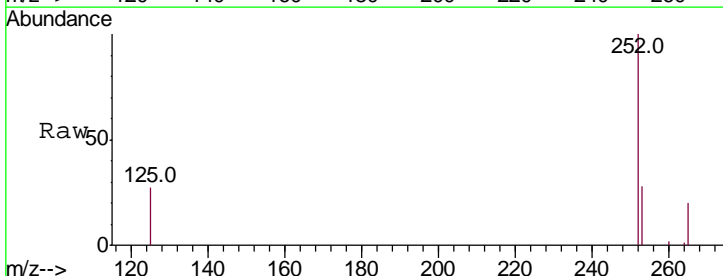
Tgt Ion: 252 Resp: 58771

Ion	Ratio	Lower	Upper
252	100		
253	24.1	0.0	48.6
125	14.8	0.0	31.6

**Manual Integrations**  
**APPROVED**  
 mohammad  
 12/16/2019 12:23:55 PM

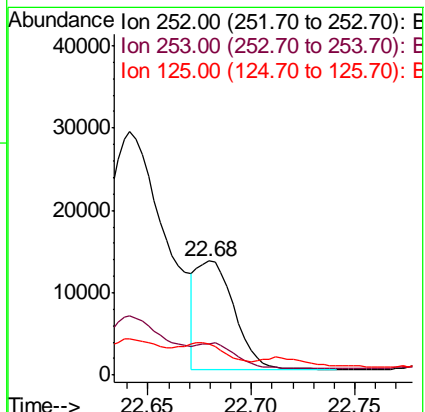
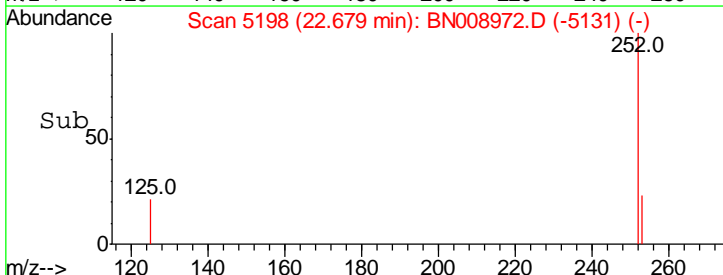


#22  
 Benzo(k)fluoranthene  
 Concen: 0.251 ng/ul m  
 RT: 22.68 min Scan# 5198  
 Delta R.T. -0.01 min  
 Lab File: BN008972.D  
 Acq: 13 Dec 2019 17:47

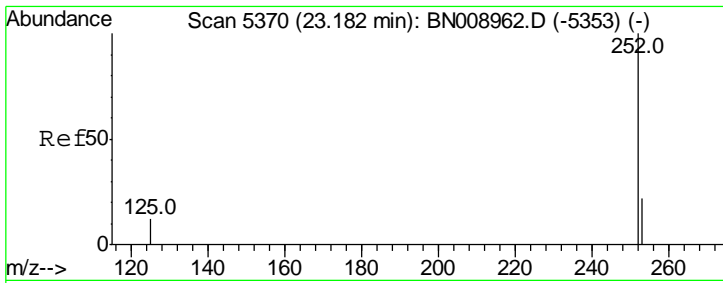


Tgt Ion: 252 Resp: 16999

Ion	Ratio	Lower	Upper
252	100		
253	27.9	19.6	29.4
125	26.9	13.8	20.6#

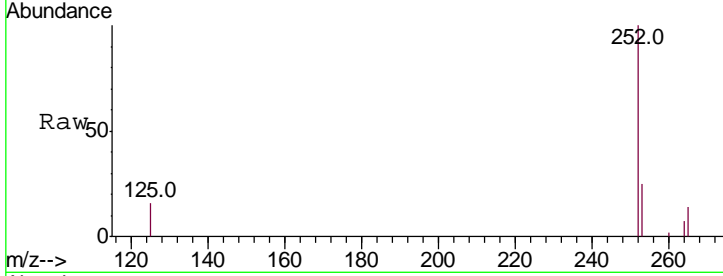






#23  
 Benzo(a)pyrene  
 Concen: 0.536 ng/ul  
 RT: 23.18 min Scan# 5370  
 Delta R.T. 0.00 min  
 Lab File: BN008972.D  
 Acq: 13 Dec 2019 17:47

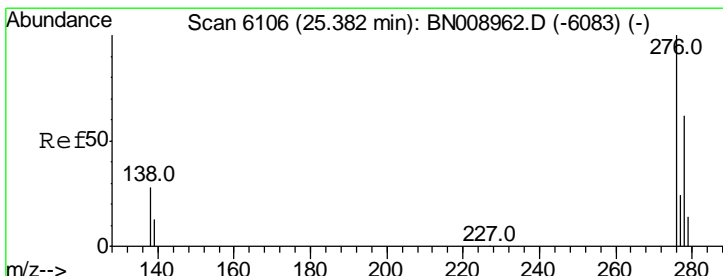
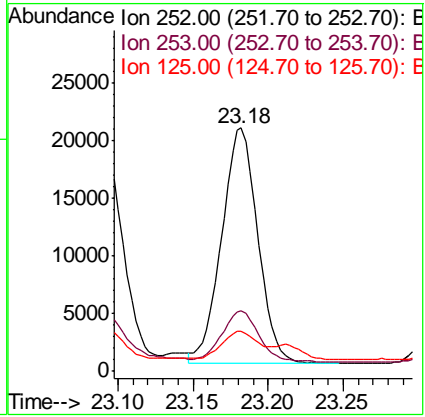
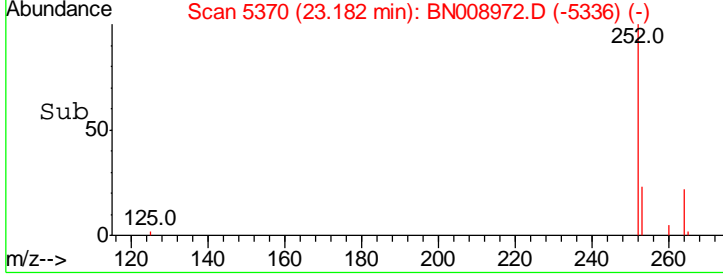
Instrument :  
 BNA\_N  
 ClientSampled :  
 C0BR2DL



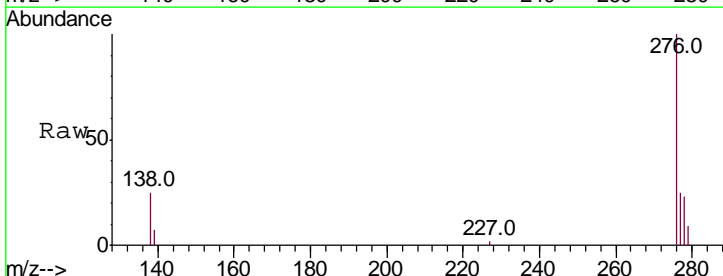
Tgt Ion: 252 Resp: 34298

Ion	Ratio	Lower	Upper
252	100		
253	25.0	19.9	29.9
125	16.3	14.6	22.0

Manual Integrations  
 APPROVED  
 mohammad  
 12/16/2019 12:23:55 PM

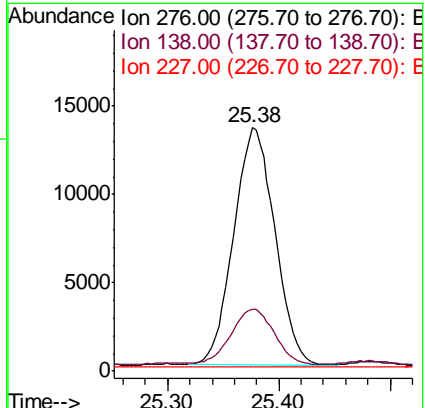
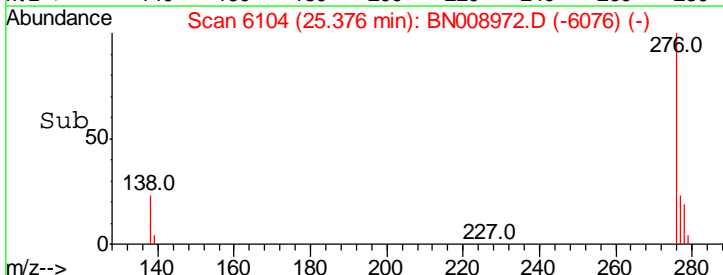


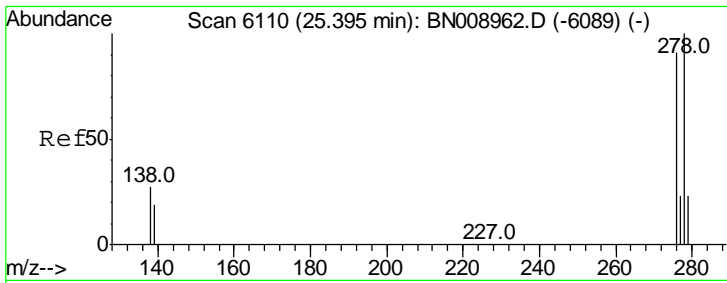
#24  
 Indeno(1,2,3-cd)pyrene  
 Concen: 0.463 ng/ul  
 RT: 25.38 min Scan# 6104  
 Delta R.T. -0.01 min  
 Lab File: BN008972.D  
 Acq: 13 Dec 2019 17:47



Tgt Ion: 276 Resp: 34640

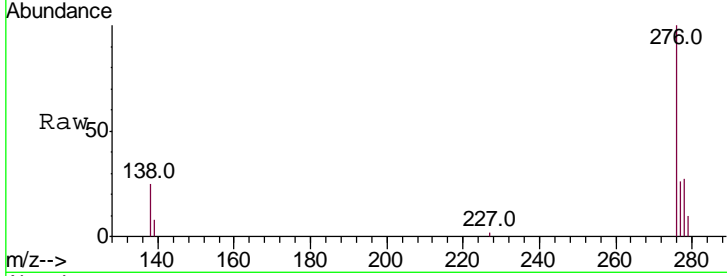
Ion	Ratio	Lower	Upper
276	100		
138	24.5	23.8	35.6
227	0.2	0.2	0.2





#25  
 Dibenzo(a,h)anthracene  
 Concen: 0.160 ng/ul  
 RT: 25.39 min Scan# 6107  
 Delta R.T. -0.01 min  
 Lab File: BN008972.D  
 Acq: 13 Dec 2019 17:47

**Instrument :**  
 BNA\_N  
**ClientSampled :**  
 C0BR2DL

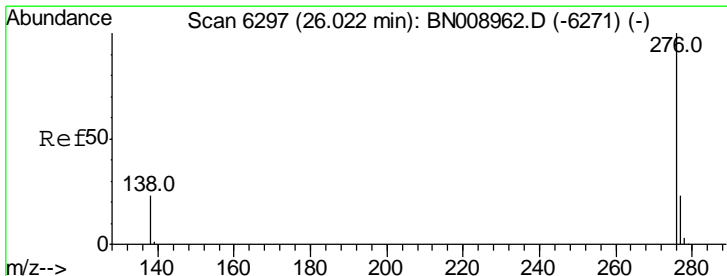
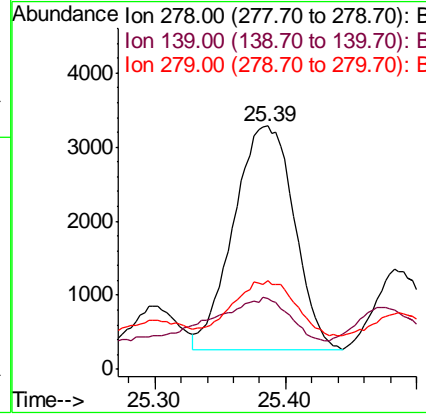
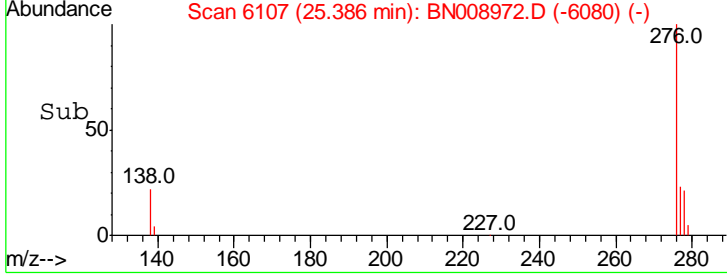


Tgt Ion: 278 Resp: 9688

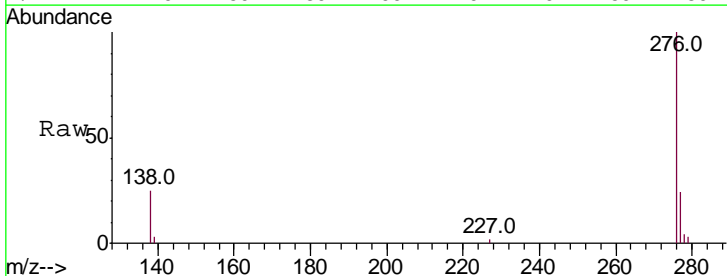
Ion	Ratio	Lower	Upper
278	100		
139	29.0	17.4	26.0#
279	36.6	20.5	30.7#

**Manual Integrations**  
**APPROVED**

mohammad  
 12/16/2019 12:23:55 PM



#26  
 Benzo(g,h,i)perylene  
 Concen: 0.590 ng/ul  
 RT: 26.02 min Scan# 6296  
 Delta R.T. -0.00 min  
 Lab File: BN008972.D  
 Acq: 13 Dec 2019 17:47



Tgt Ion: 276 Resp: 36951

Ion	Ratio	Lower	Upper
276	100		
138	25.3	21.9	32.9
277	24.5	19.9	29.9

