

Data Path : Z:\svoasrv\HPCHEM1\BNA\_N\Data\BN121820\  
 Data File : BN013210.D  
 Acq On : 18 Dec 2020 14:53  
 Operator : CG/JU  
 Sample : SSTDCCC0.4  
 Misc :  
 ALS Vial : 2 Sample Multiplier: 1

Instrument :  
 BNA\_N  
 ClientSampleId :  
 SSTDCCC0.4

Quant Time: Dec 19 01:13:28 2020  
 Quant Method : Z:\SVOASRV\HPCHEM1\BNA\_N\METHODS\8270-SIM-BN121620.M  
 Quant Title : ASP BNA STANDARDS FOR 5 POINT CALIBRATION  
 QLast Update : Fri Dec 18 16:11:20 2020  
 Response via : Initial Calibration

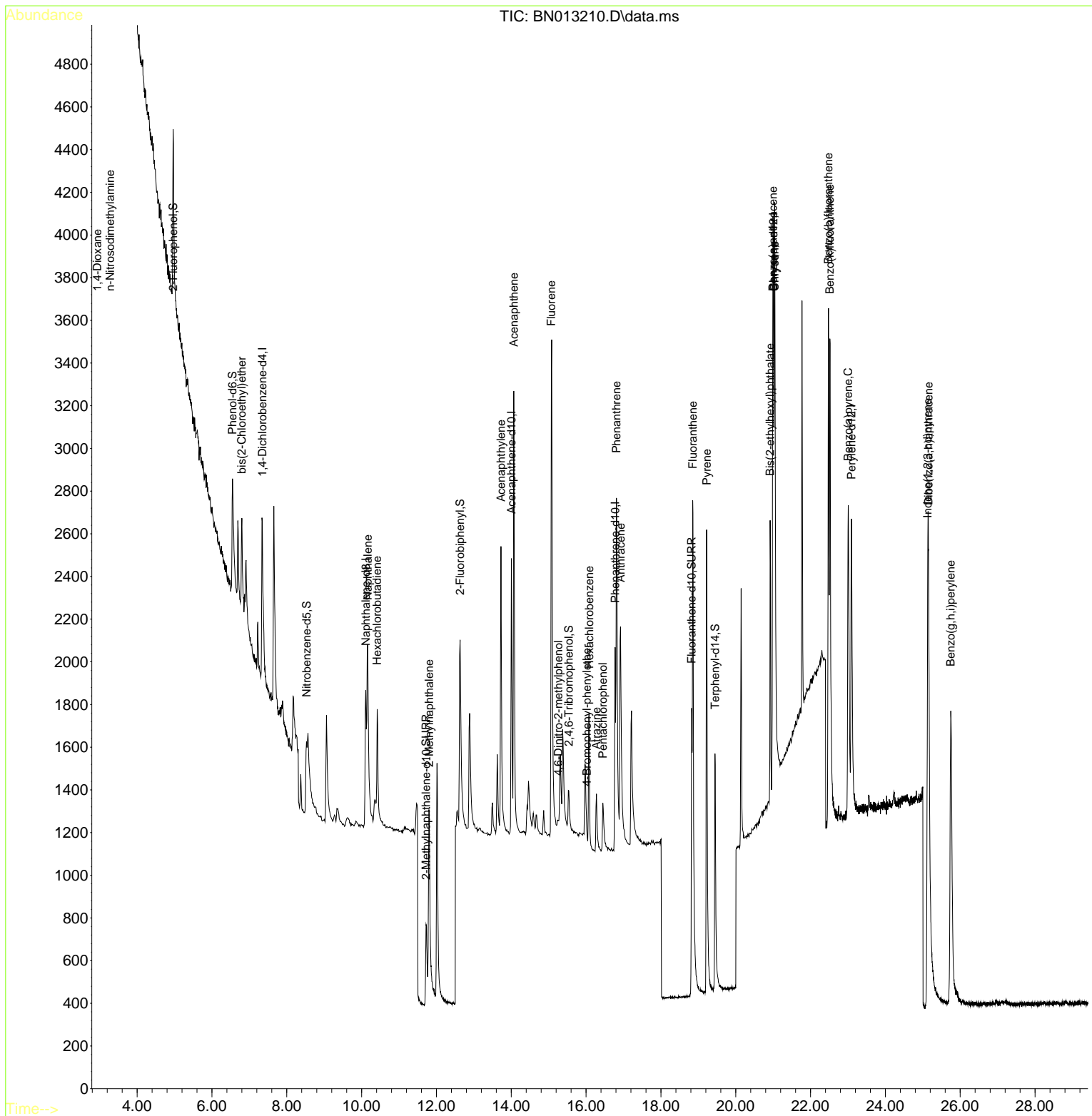
Compound	R.T.	QIon	Response	Conc	Units	Dev(Min)	
Internal Standards							
1) 1,4-Dichlorobenzene-d4	7.346	152	549	0.40	ng	0.00	
7) Naphthalene-d8	10.112	136	1509	0.40	ng	# 0.00	
13) Acenaphthene-d10	14.004	164	896	0.40	ng	0.00	
19) Phenanthrene-d10	16.775	188	2027	0.40	ng	# 0.00	
29) Chrysene-d12	21.006	240	1989	0.40	ng	# 0.00	
36) Perylene-d12	23.096	264	2221	0.40	ng	# 0.00	
System Monitoring Compounds							
4) 2-Fluorophenol	4.962	112	893	0.40	ng	0.00	
5) Phenol-d6	6.549	99	873	0.38	ng	0.00	
8) Nitrobenzene-d5	8.528	82	668	0.43	ng	0.00	
11) 2-Methylnaphthalene-d10	11.724	152	1082	0.41	ng	0.00	
14) 2,4,6-Tribromophenol	15.539	330	228	0.40	ng	0.00	
15) 2-Fluorobiphenyl	12.633	172	1577	0.42	ng	0.00	
27) Fluoranthene-d10	18.821	212	2506	0.38	ng	0.00	
31) Terphenyl-d14	19.446	244	2046	0.41	ng	0.00	
							Qvalue
2) 1,4-Dioxane	2.933	88	454	0.47	ng		96
3) n-Nitrosodimethylamine	3.279	42	669	0.42	ng	#	94
6) bis(2-Chloroethyl)ether	6.798	93	439	0.31	ng	#	83
9) Naphthalene	10.163	128	1836	0.40	ng	#	87
10) Hexachlorobutadiene	10.416	225	468	0.47	ng	#	100
12) 2-Methylnaphthalene	11.804	142	1141	0.36	ng	#	95
16) Acenaphthylene	13.724	152	1899	0.40	ng		100
17) Acenaphthene	14.067	154	1208	0.40	ng		87
18) Fluorene	15.069	166	1586	0.40	ng		98
20) 4,6-Dinitro-2-methylph...	15.260	198	101	0.37	ng	#	1
21) 4-Bromophenyl-phenylether	16.021	248	206	0.52	ng	#	92
22) Hexachlorobenzene	16.082	284	543	0.39	ng		94
23) Atrazine	16.276	200	426	0.35	ng	#	85
24) Pentachlorophenol	16.447	266	202	0.35	ng		92
25) Phenanthrene	16.812	178	2509	0.38	ng		99
26) Anthracene	16.922	178	2104	0.36	ng		100
28) Fluoranthene	18.856	202	3059	0.38	ng		99
30) Pyrene	19.223	202	3097	0.40	ng		99
32) Benzo(a)anthracene	20.995	228	2385	0.34	ng		96
33) Chrysene	21.038	228	3360	0.45	ng		98
34) Bis(2-ethylhexyl)phtha...	21.021	149	1358	0.12	ng		96
35) Indeno(1,2,3-cd)pyrene	25.132	276	3923	0.38	ng		94
37) Benzo(b)fluoranthene	22.479	252	3234	0.41	ng	#	89
38) Benzo(k)fluoranthene	22.517	252	3867	0.43	ng	#	88
39) Benzo(a)pyrene	23.007	252	3088	0.40	ng	#	83
40) Dibenzo(a,h)anthracene	25.153	278	3239	0.38	ng	#	83
41) Benzo(g,h,i)perylene	25.748	276	3762	0.42	ng	#	91

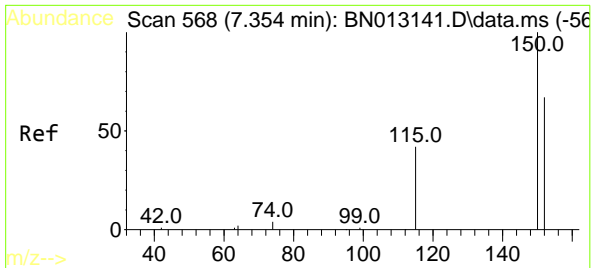
(#) = qualifier out of range (m) = manual integration (+) = signals summed

Data Path : Z:\svoasrv\HPCHEM1\BNA\_N\Data\BN121820\  
 Data File : BN013210.D  
 Acq On : 18 Dec 2020 14:53  
 Operator : CG/JU  
 Sample : SSTDCCC0.4  
 Misc :  
 ALS Vial : 2 Sample Multiplier: 1

Instrument :  
 BNA\_N  
 Client Sampled :  
 SSTDCCC0.4

Quant Time: Dec 19 01:13:28 2020  
 Quant Method : Z:\SVOASRV\HPCHEM1\BNA\_N\METHODS\8270-SIM-BN121620.M  
 Quant Title : ASP BNA STANDARDS FOR 5 POINT CALIBRATION  
 QLast Update : Fri Dec 18 16:11:20 2020  
 Response via : Initial Calibration



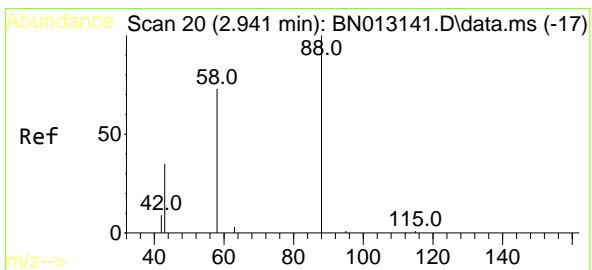
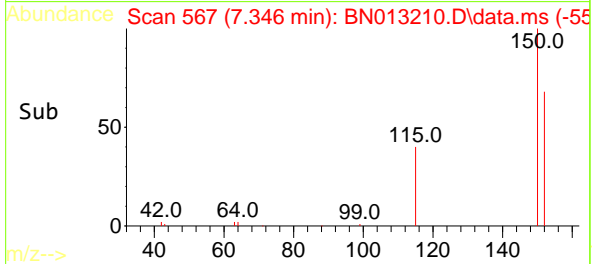
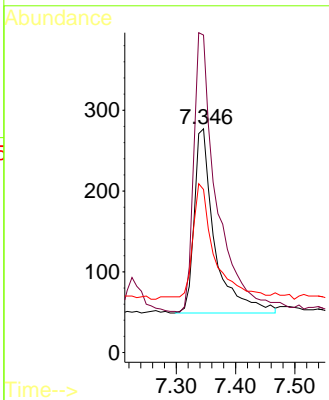
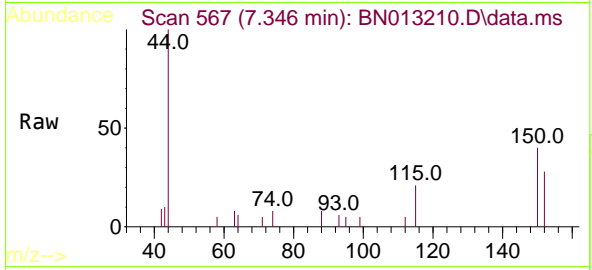


#1  
 1,4-Dichlorobenzene-d4  
 Concen: 0.40 ng  
 RT: 7.346 min Scan# 567  
 Delta R.T. -0.000 min  
 Lab File: BN013210.D  
 Acq: 18 Dec 2020 14:53

Instrument :  
 BNA\_N  
 ClientSampled :  
 SSTDCCC0.4

Tgt Ion:152 Resp: 549

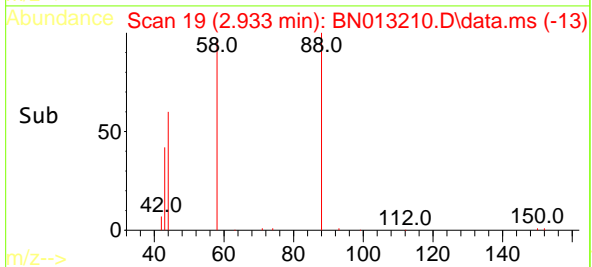
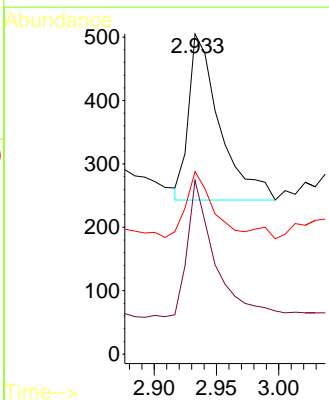
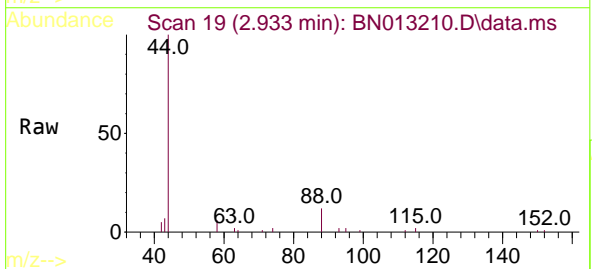
Ion	Ratio	Lower	Upper
152	100		
150	141.9	116.6	174.8
115	72.9	52.9	79.3

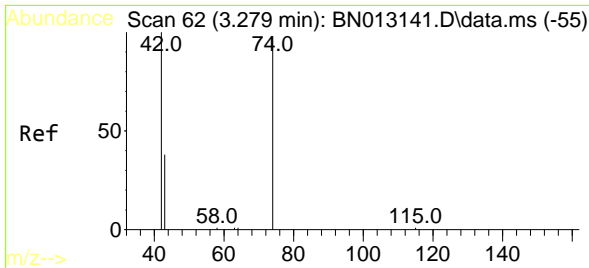


#2  
 1,4-Dioxane  
 Concen: 0.47 ng  
 RT: 2.933 min Scan# 19  
 Delta R.T. 0.000 min  
 Lab File: BN013210.D  
 Acq: 18 Dec 2020 14:53

Tgt Ion: 88 Resp: 454

Ion	Ratio	Lower	Upper
88	100		
58	74.4	59.4	89.2
43	33.7	32.3	48.5



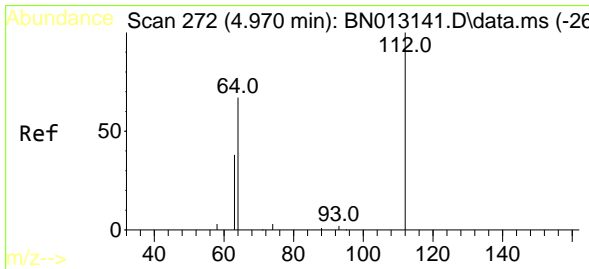
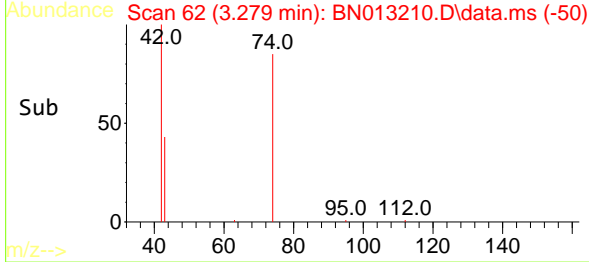
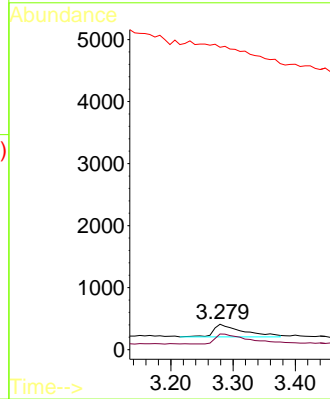
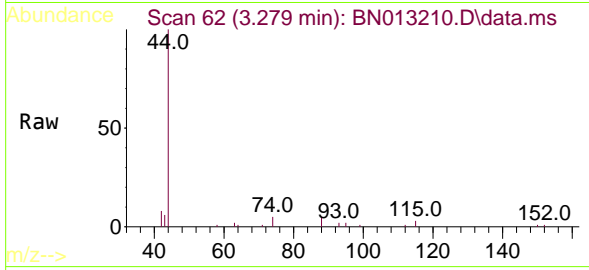


#3  
 n-Nitrosodimethylamine  
 Concen: 0.42 ng  
 RT: 3.279 min Scan# 62  
 Delta R.T. 0.000 min  
 Lab File: BN013210.D  
 Acq: 18 Dec 2020 14:53

Instrument :  
 BNA\_N  
 ClientSampled :  
 SSTDCCC0.4

Tgt Ion: 42 Resp: 669

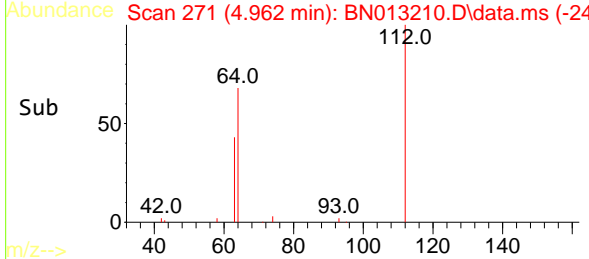
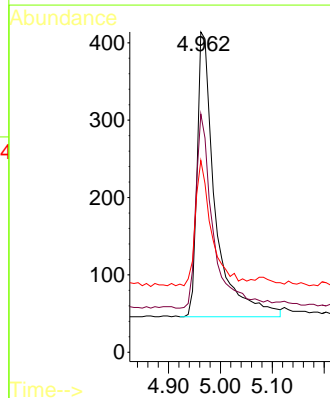
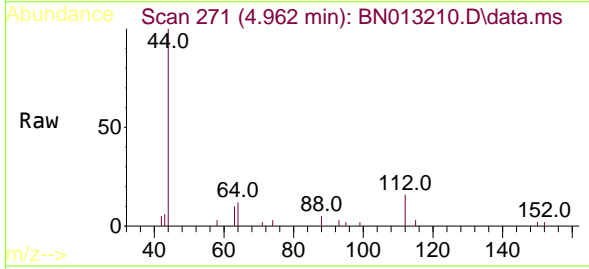
Ion	Ratio	Lower	Upper
42	100		
74	85.7	64.4	96.6
44	0.0	2.8	4.2#

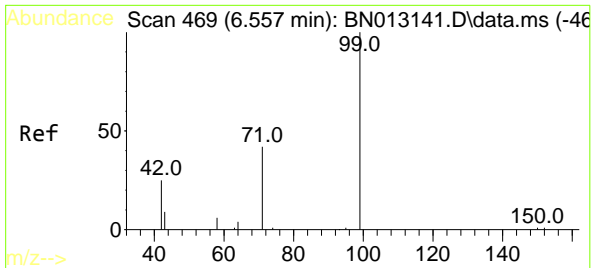


#4  
 2-Fluorophenol  
 Concen: 0.40 ng  
 RT: 4.962 min Scan# 271  
 Delta R.T. 0.000 min  
 Lab File: BN013210.D  
 Acq: 18 Dec 2020 14:53

Tgt Ion: 112 Resp: 893

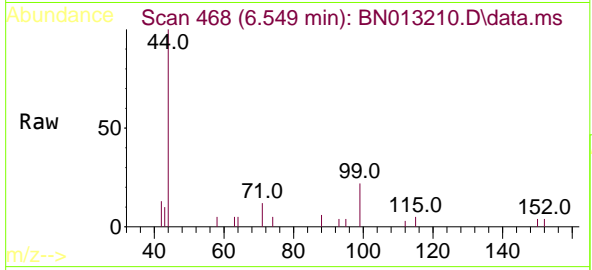
Ion	Ratio	Lower	Upper
112	100		
64	66.5	49.5	74.3
63	39.6	32.0	48.0





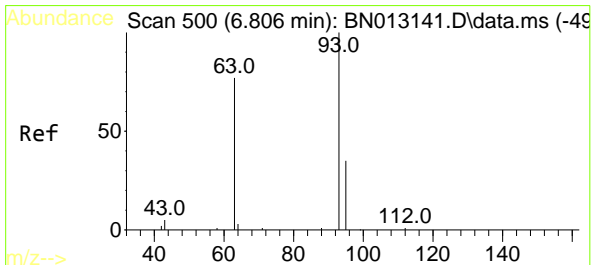
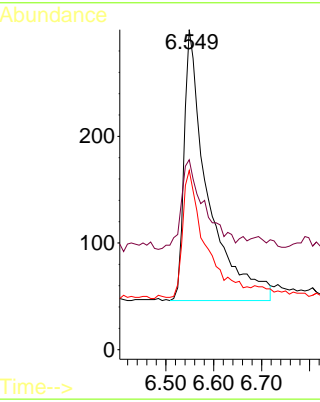
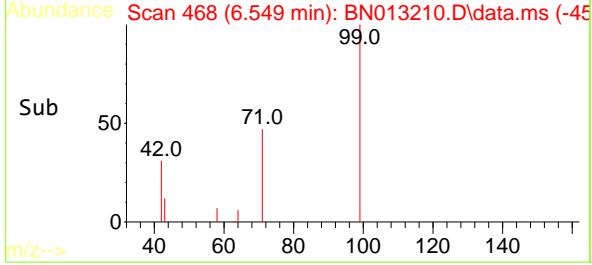
#5  
Phenol-d6  
Concen: 0.38 ng  
RT: 6.549 min Scan# 468  
Delta R.T. 0.000 min  
Lab File: BN013210.D  
Acq: 18 Dec 2020 14:53

Instrument :  
BNA\_N  
ClientSampled :  
SSTDCCC0.4

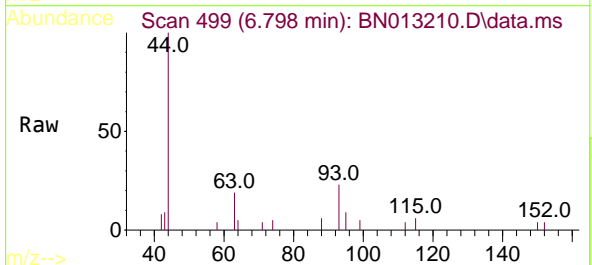


Tgt Ion: 99 Resp: 873

Ion	Ratio	Lower	Upper
99	100		
42	33.2	22.4	33.6
71	45.4	37.8	56.6

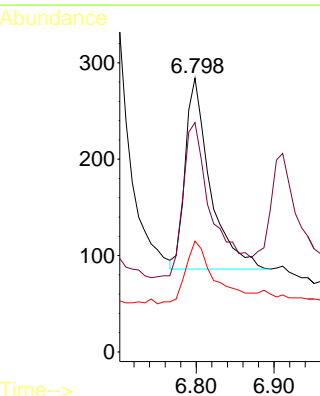
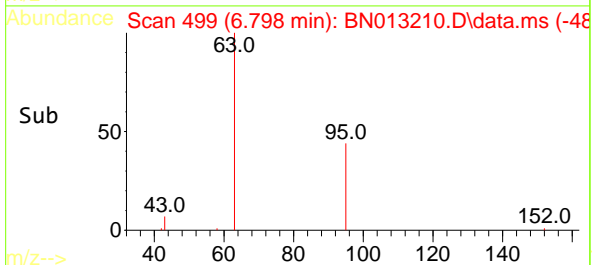


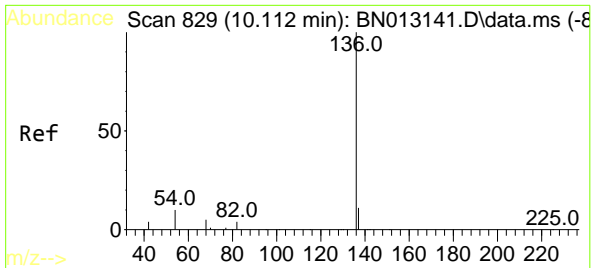
#6  
bis(2-Chloroethyl)ether  
Concen: 0.31 ng  
RT: 6.798 min Scan# 499  
Delta R.T. 0.000 min  
Lab File: BN013210.D  
Acq: 18 Dec 2020 14:53



Tgt Ion: 93 Resp: 439

Ion	Ratio	Lower	Upper
93	100		
63	96.1	63.1	94.7#
95	39.2	26.1	39.1#



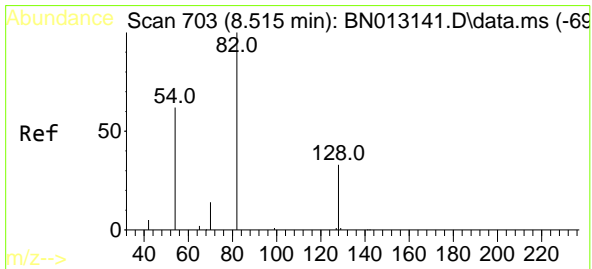
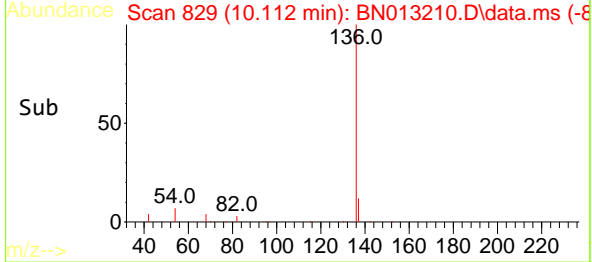
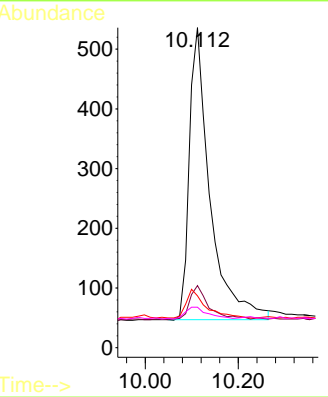
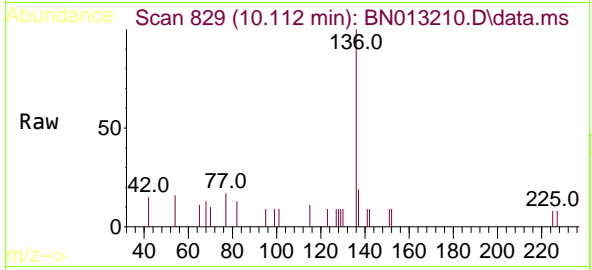


#7  
 Naphthalene-d8  
 Concen: 0.40 ng  
 RT: 10.112 min Scan# 829  
 Delta R.T. 0.000 min  
 Lab File: BN013210.D  
 Acq: 18 Dec 2020 14:53

Instrument :  
 BNA\_N  
 ClientSampled :  
 SSTDCCC0.4

Tgt Ion:136 Resp: 1509

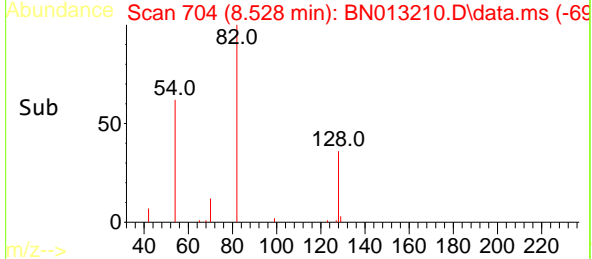
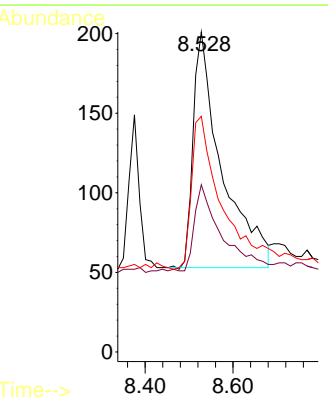
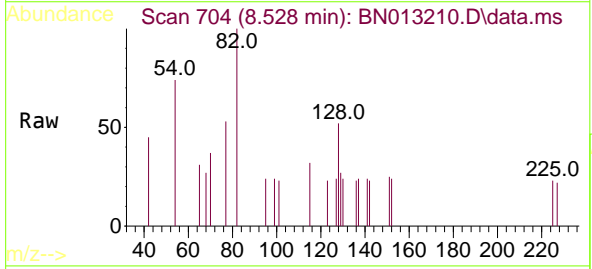
Ion	Ratio	Lower	Upper
136	100		
137	19.4	10.6	15.8#
54	16.2	8.6	12.8#
68	12.7	5.7	8.5#

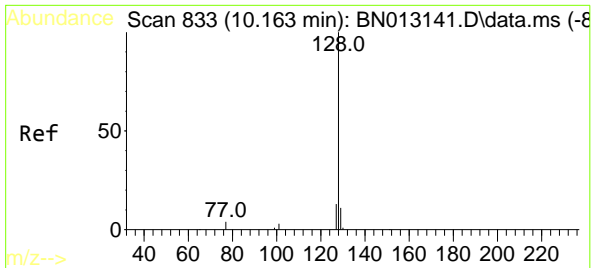


#8  
 Nitrobenzene-d5  
 Concen: 0.43 ng  
 RT: 8.528 min Scan# 704  
 Delta R.T. 0.000 min  
 Lab File: BN013210.D  
 Acq: 18 Dec 2020 14:53

Tgt Ion: 82 Resp: 668

Ion	Ratio	Lower	Upper
82	100		
128	52.2	30.6	46.0#
54	73.6	48.3	72.5#



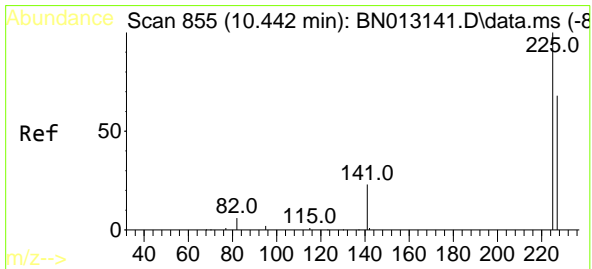
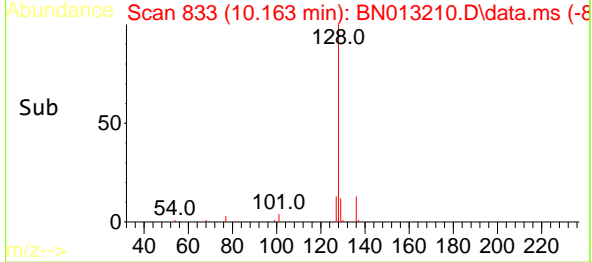
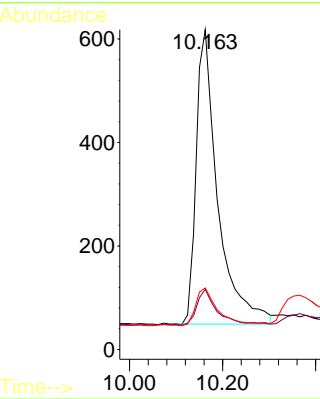
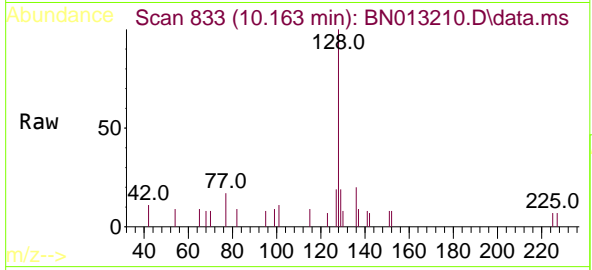


#9  
 Naphthalene  
 Concen: 0.40 ng  
 RT: 10.163 min Scan# 833  
 Delta R.T. 0.000 min  
 Lab File: BN013210.D  
 Acq: 18 Dec 2020 14:53

Instrument :  
 BNA\_N  
 ClientSampled :  
 SSTDCCC0.4

Tgt Ion:128 Resp: 1836

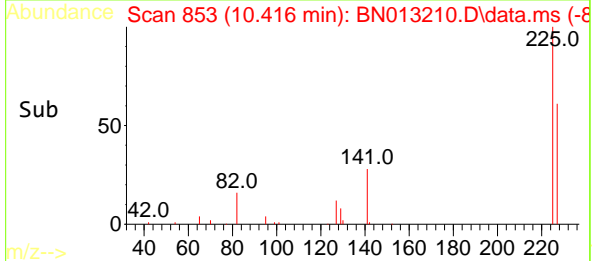
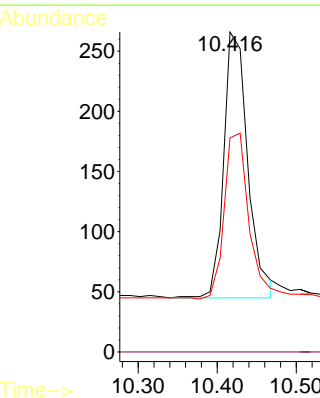
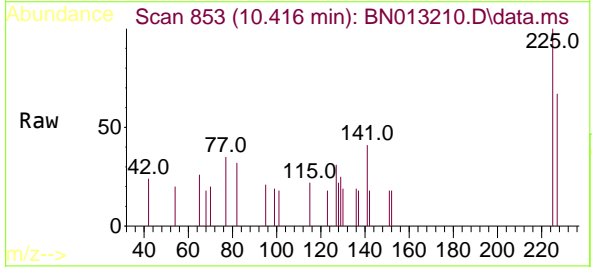
Ion	Ratio	Lower	Upper
128	100		
129	18.8	9.8	14.8#
127	19.3	12.2	18.4#

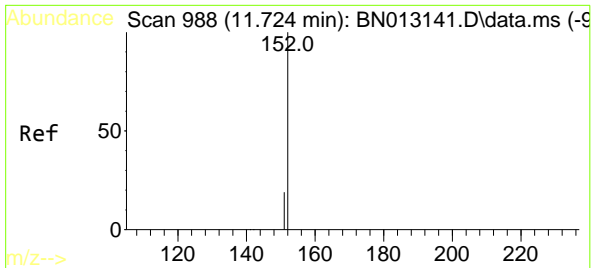


#10  
 Hexachlorobutadiene  
 Concen: 0.47 ng  
 RT: 10.416 min Scan# 853  
 Delta R.T. 0.000 min  
 Lab File: BN013210.D  
 Acq: 18 Dec 2020 14:53

Tgt Ion:225 Resp: 468

Ion	Ratio	Lower	Upper
225	100		
223	0.0	0.0	0.0
227	63.5	51.0	76.6

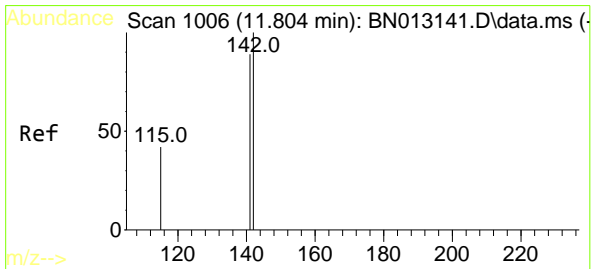
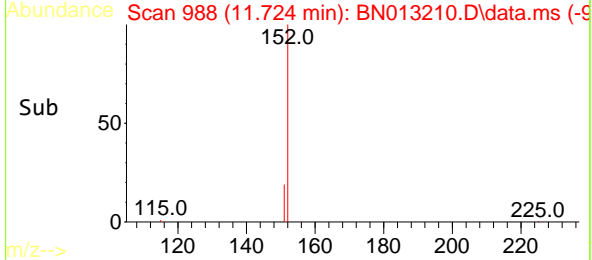
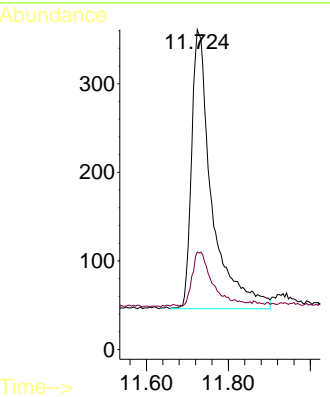
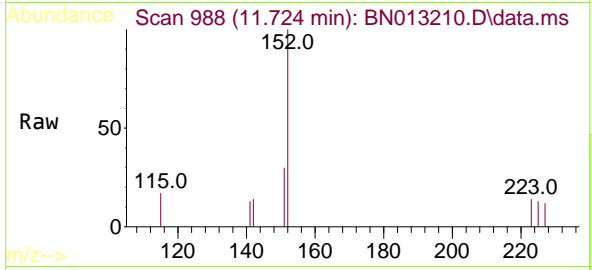




#11  
 2-Methylnaphthalene-d10  
 Concen: 0.41 ng  
 RT: 11.724 min Scan# 988  
 Delta R.T. 0.000 min  
 Lab File: BN013210.D  
 Acq: 18 Dec 2020 14:53

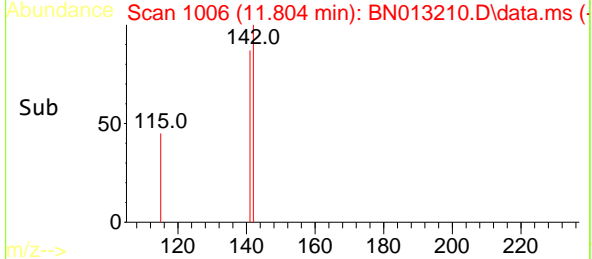
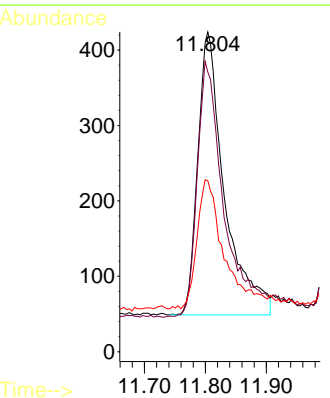
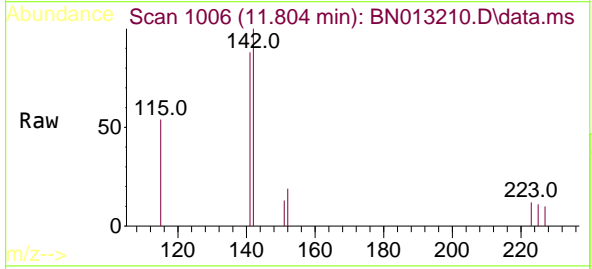
Instrument :  
 BNA\_N  
 ClientSampled :  
 SSTDCCC0.4

Tgt Ion:152 Resp: 1082  
 Ion Ratio Lower Upper  
 152 100  
 151 18.4 16.7 25.1

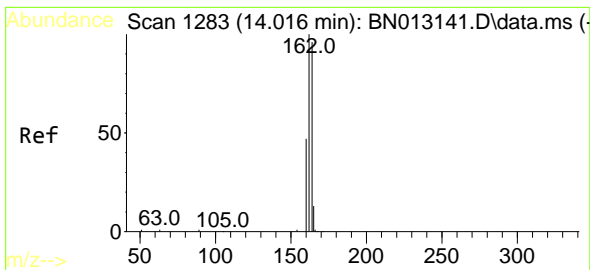


#12  
 2-Methylnaphthalene  
 Concen: 0.36 ng  
 RT: 11.804 min Scan# 1006  
 Delta R.T. 0.000 min  
 Lab File: BN013210.D  
 Acq: 18 Dec 2020 14:53

Tgt Ion:142 Resp: 1141  
 Ion Ratio Lower Upper  
 142 100  
 141 87.5 69.4 104.2  
 115 53.5 35.7 53.5#

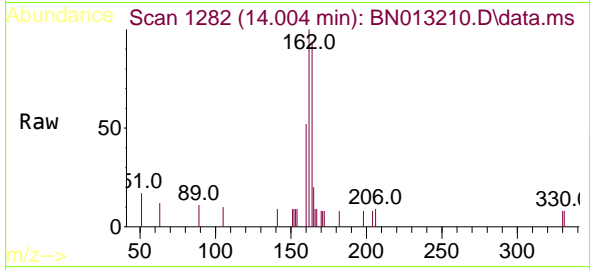




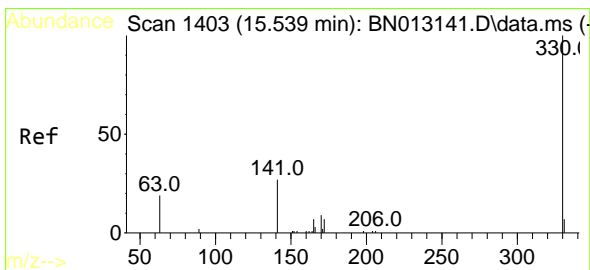
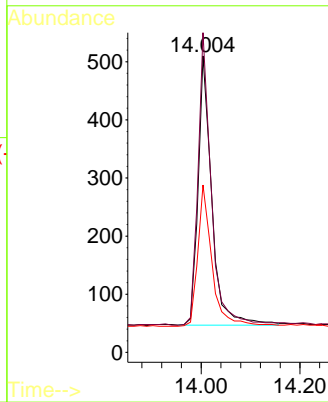
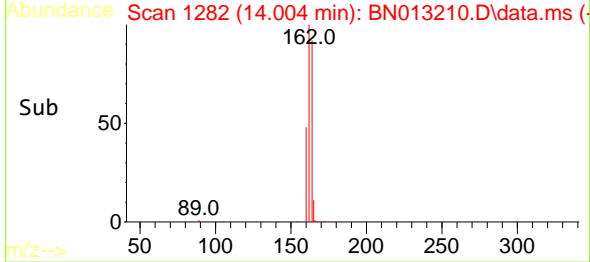


#13  
 Acenaphthene-d10  
 Concen: 0.40 ng  
 RT: 14.004 min Scan# 1282  
 Delta R.T. 0.000 min  
 Lab File: BN013210.D  
 Acq: 18 Dec 2020 14:53

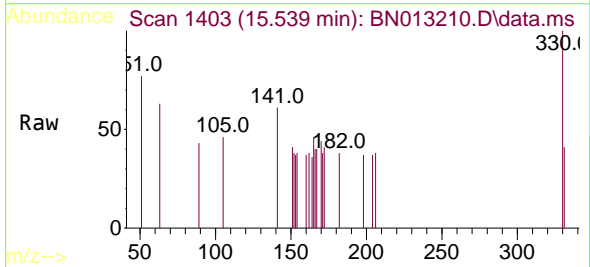
Instrument :  
 BNA\_N  
 ClientSampled :  
 SSTDCCC0.4



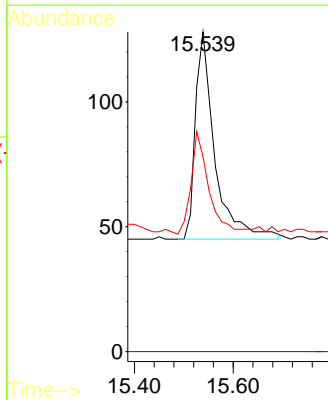
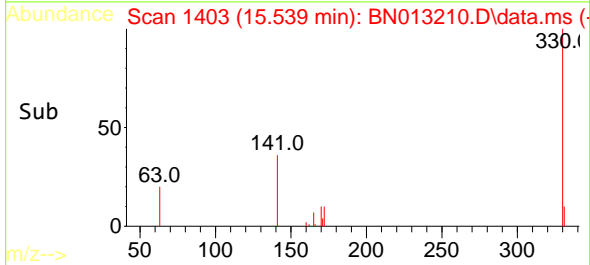
Tgt Ion:164 Resp: 896  
 Ion Ratio Lower Upper  
 164 100  
 162 107.8 80.6 120.8  
 160 56.5 39.5 59.3

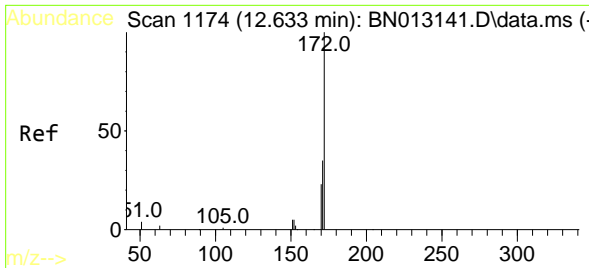


#14  
 2,4,6-Tribromophenol  
 Concen: 0.40 ng  
 RT: 15.539 min Scan# 1403  
 Delta R.T. 0.000 min  
 Lab File: BN013210.D  
 Acq: 18 Dec 2020 14:53



Tgt Ion:330 Resp: 228  
 Ion Ratio Lower Upper  
 330 100  
 332 0.0 0.0 0.0  
 141 44.7 34.4 51.6



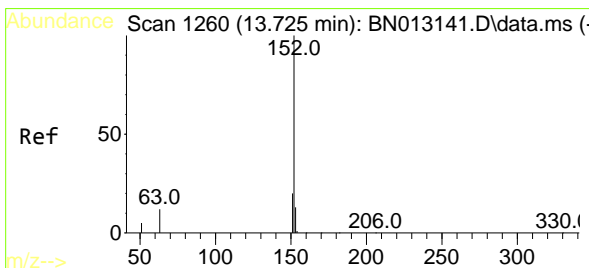
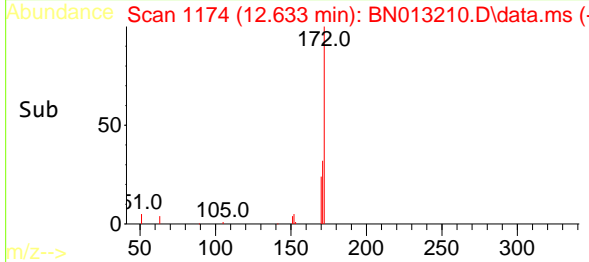
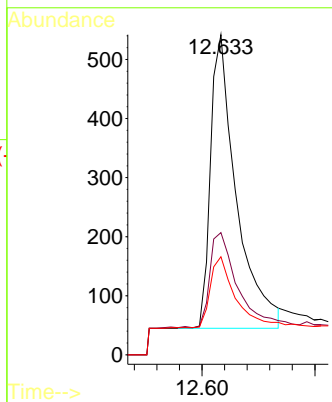
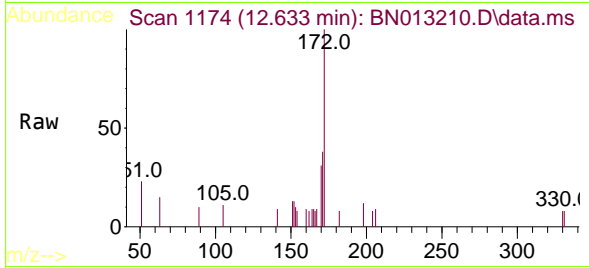


#15  
 2-Fluorobiphenyl  
 Concen: 0.42 ng  
 RT: 12.633 min Scan# 1174  
 Delta R.T. 0.000 min  
 Lab File: BN013210.D  
 Acq: 18 Dec 2020 14:53

Instrument :  
 BNA\_N  
 ClientSampled :  
 SSTDCCC0.4

Tgt Ion:172 Resp: 1577

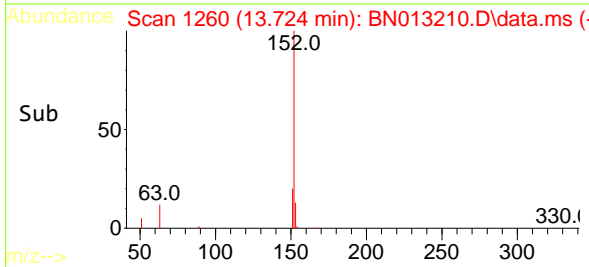
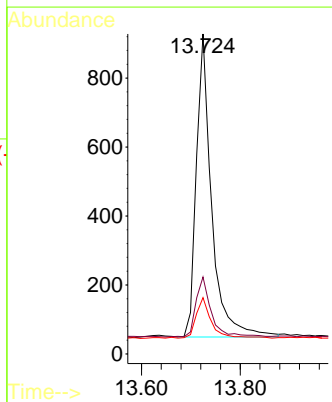
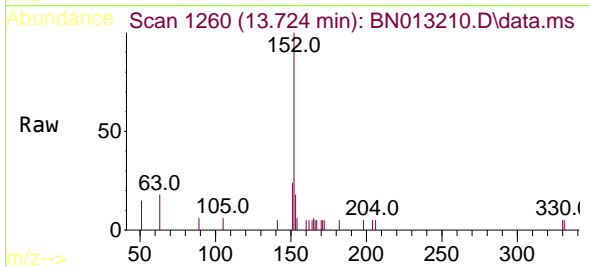
Ion	Ratio	Lower	Upper
172	100		
171	38.2	28.2	42.4
170	30.6	20.0	30.0#

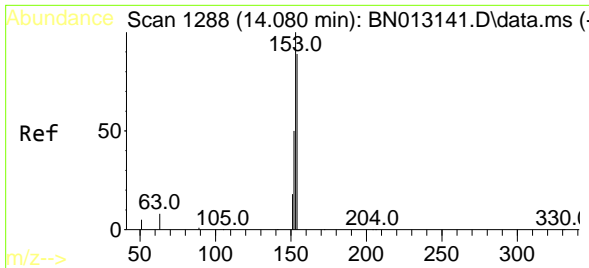


#16  
 Acenaphthylene  
 Concen: 0.40 ng  
 RT: 13.724 min Scan# 1260  
 Delta R.T. 0.000 min  
 Lab File: BN013210.D  
 Acq: 18 Dec 2020 14:53

Tgt Ion:152 Resp: 1899

Ion	Ratio	Lower	Upper
152	100		
151	19.9	15.8	23.8
153	13.4	10.6	16.0



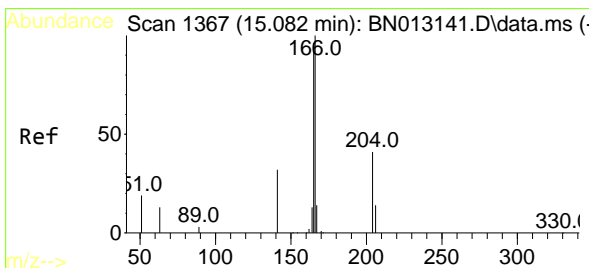
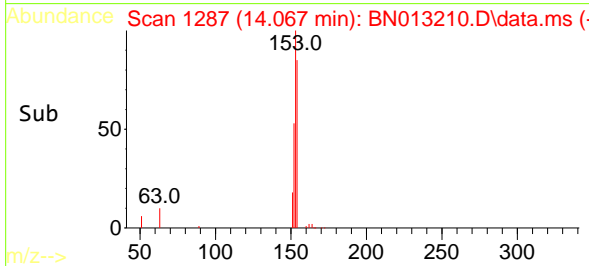
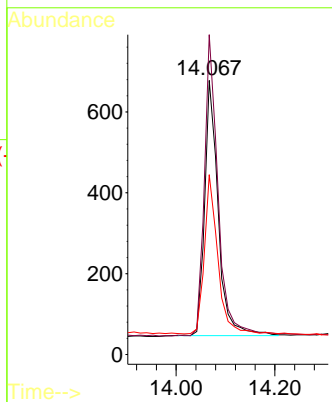
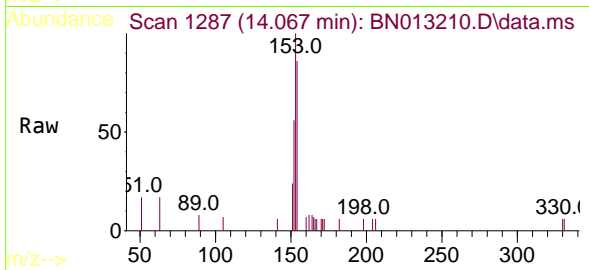


#17  
 Acenaphthene  
 Concen: 0.40 ng  
 RT: 14.067 min Scan# 1287  
 Delta R.T. 0.000 min  
 Lab File: BN013210.D  
 Acq: 18 Dec 2020 14:53

Instrument :  
 BNA\_N  
 ClientSampled :  
 SSTDCCC0.4

Tgt Ion:154 Resp: 1208

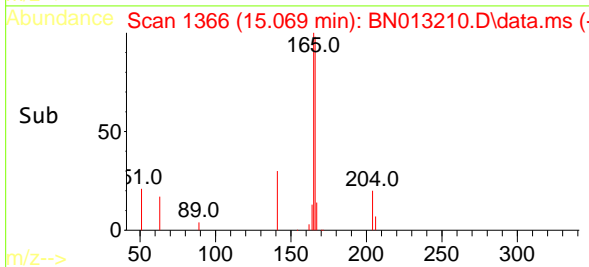
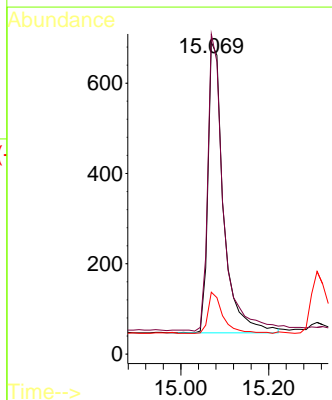
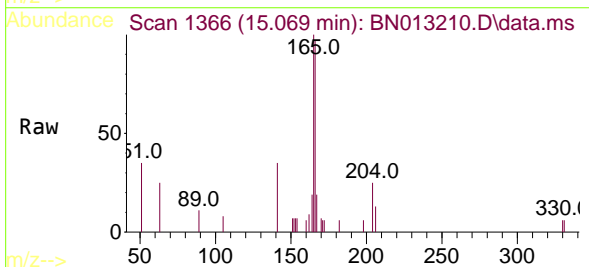
Ion	Ratio	Lower	Upper
154	100		
153	119.3	83.6	125.4
152	61.7	43.9	65.9

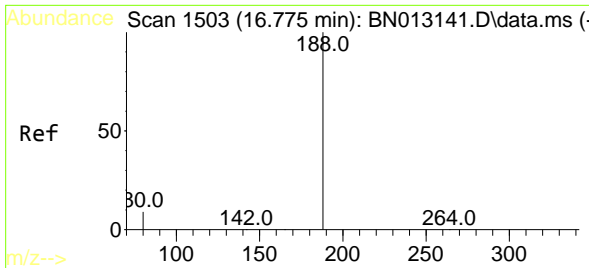


#18  
 Fluorene  
 Concen: 0.40 ng  
 RT: 15.069 min Scan# 1366  
 Delta R.T. 0.000 min  
 Lab File: BN013210.D  
 Acq: 18 Dec 2020 14:53

Tgt Ion:166 Resp: 1586

Ion	Ratio	Lower	Upper
166	100		
165	100.1	78.6	118.0
167	13.4	10.7	16.1



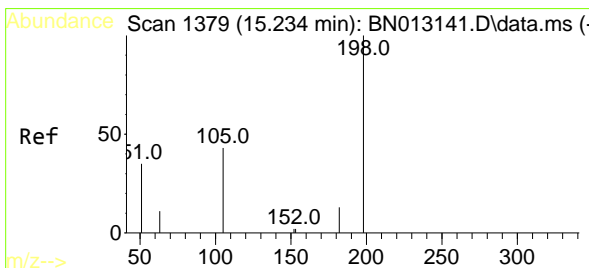
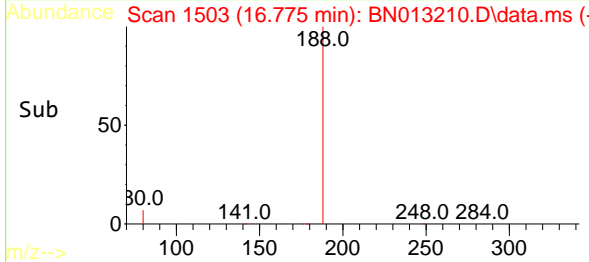
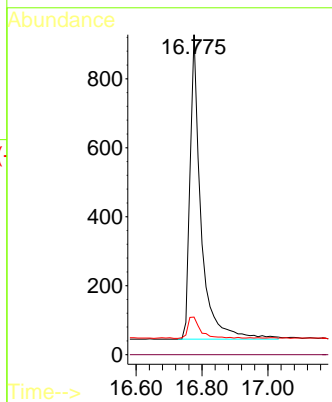
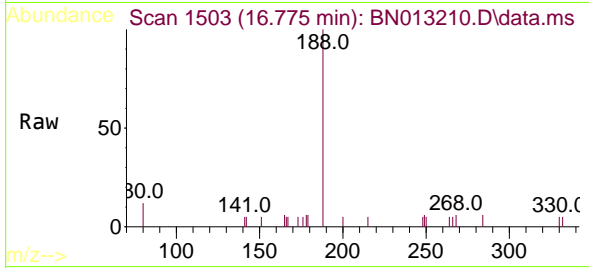


#19  
 Phenanthrene-d10  
 Concen: 0.40 ng  
 RT: 16.775 min Scan# 1503  
 Delta R.T. 0.000 min  
 Lab File: BN013210.D  
 Acq: 18 Dec 2020 14:53

Instrument :  
 BNA\_N  
 ClientSampled :  
 SSTDCCC0.4

Tgt Ion:188 Resp: 2027

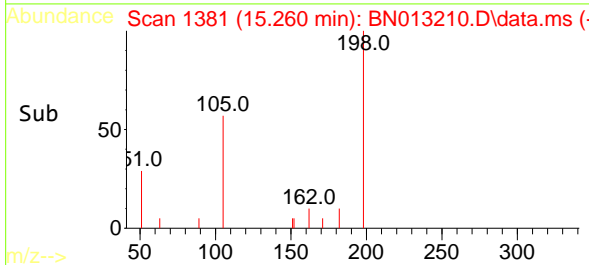
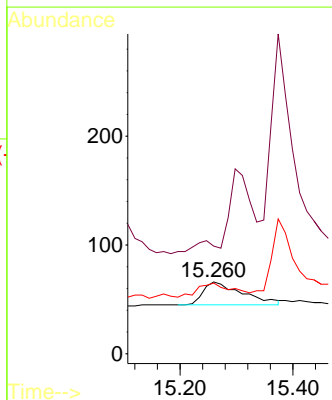
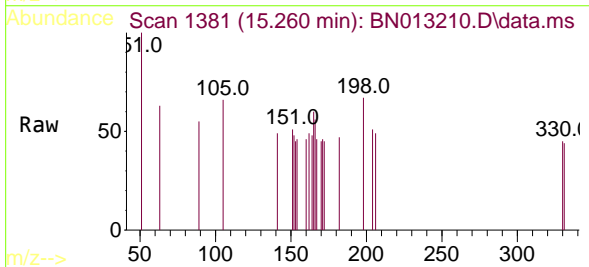
Ion	Ratio	Lower	Upper
188	100		
94	0.0	0.0	0.0
80	11.7	5.0	7.4#

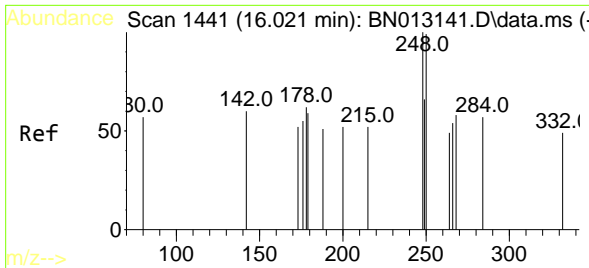


#20  
 4,6-Dinitro-2-methylphenol  
 Concen: 0.37 ng  
 RT: 15.260 min Scan# 1381  
 Delta R.T. 0.000 min  
 Lab File: BN013210.D  
 Acq: 18 Dec 2020 14:53

Tgt Ion:198 Resp: 101

Ion	Ratio	Lower	Upper
198	100		
51	150.0	43.5	65.3#
105	98.5	27.2	40.8#

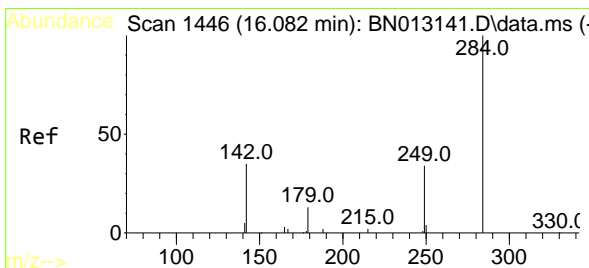
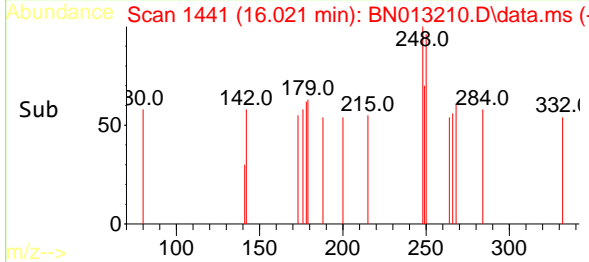
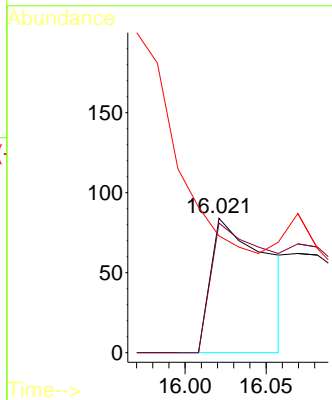
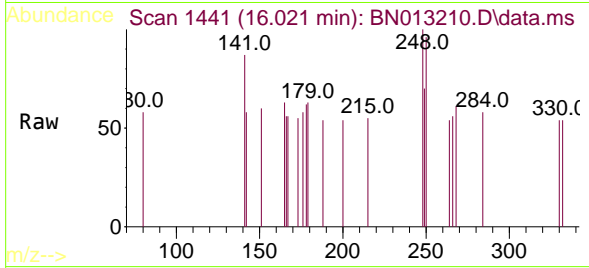




#21  
 4-Bromophenyl-phenylether  
 Concen: 0.52 ng  
 RT: 16.021 min Scan# 1441  
 Delta R.T. 0.000 min  
 Lab File: BN013210.D  
 Acq: 18 Dec 2020 14:53

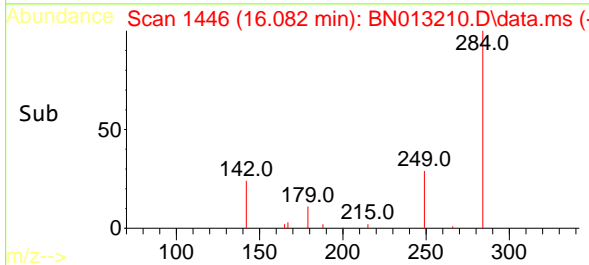
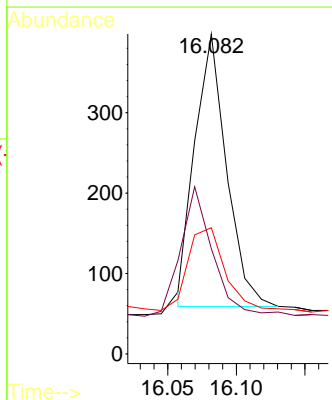
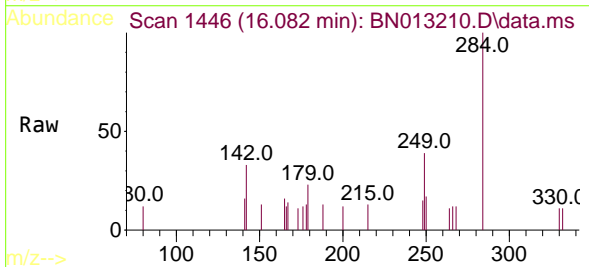
Instrument :  
 BNA\_N  
 ClientSampled :  
 SSTDCCC0.4

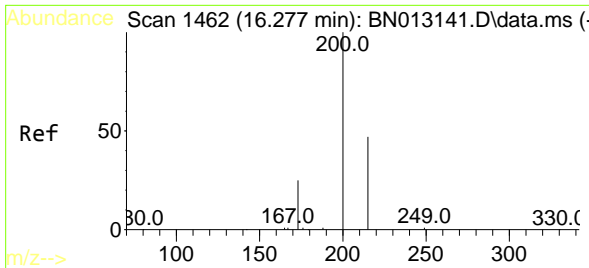
Tgt Ion:248 Resp: 206  
 Ion Ratio Lower Upper  
 248 100  
 250 96.4 77.3 115.9  
 141 86.9 57.8 86.8#



#22  
 Hexachlorobenzene  
 Concen: 0.39 ng  
 RT: 16.082 min Scan# 1446  
 Delta R.T. 0.000 min  
 Lab File: BN013210.D  
 Acq: 18 Dec 2020 14:53

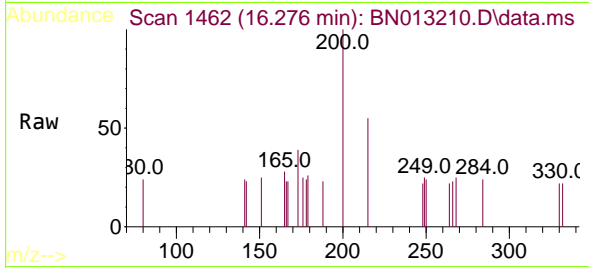
Tgt Ion:284 Resp: 543  
 Ion Ratio Lower Upper  
 284 100  
 142 35.0 32.0 48.0  
 249 32.2 27.0 40.6





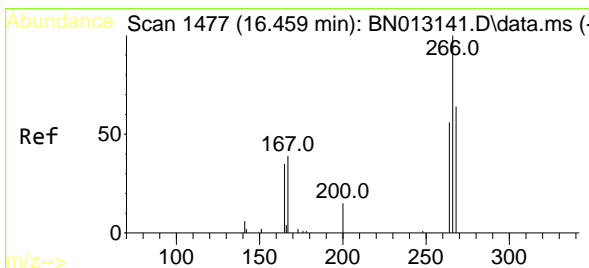
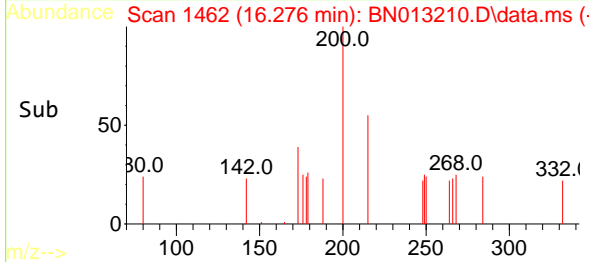
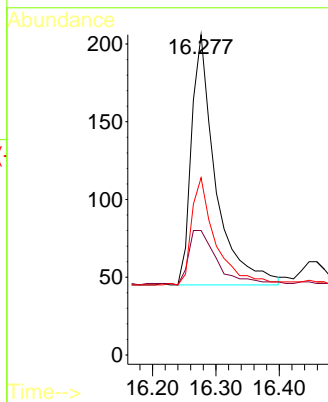
#23  
 Atrazine  
 Concen: 0.35 ng  
 RT: 16.276 min Scan# 1462  
 Delta R.T. 0.000 min  
 Lab File: BN013210.D  
 Acq: 18 Dec 2020 14:53

Instrument :  
 BNA\_N  
 ClientSampled :  
 SSTDCCC0.4

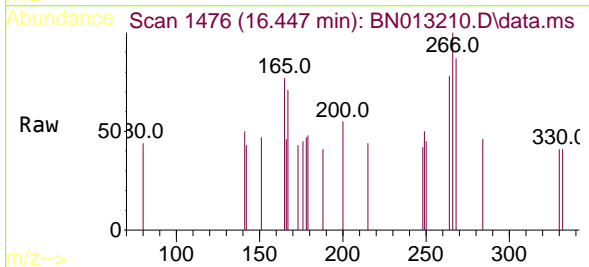


Tgt Ion: 200 Resp: 426

Ion	Ratio	Lower	Upper
200	100		
173	38.8	22.8	34.2#
215	55.3	38.1	57.1

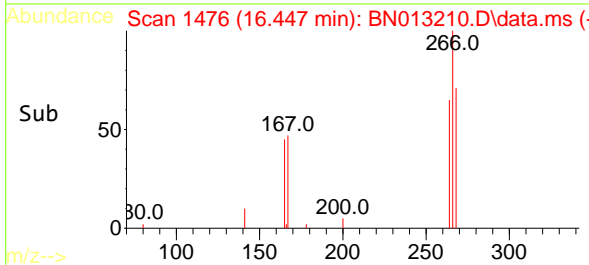
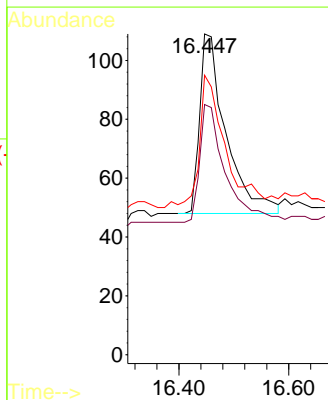


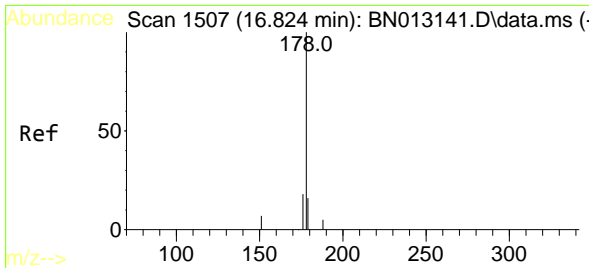
#24  
 Pentachlorophenol  
 Concen: 0.35 ng  
 RT: 16.447 min Scan# 1476  
 Delta R.T. 0.000 min  
 Lab File: BN013210.D  
 Acq: 18 Dec 2020 14:53



Tgt Ion: 266 Resp: 202

Ion	Ratio	Lower	Upper
266	100		
264	64.9	50.9	76.3
268	75.2	51.5	77.3



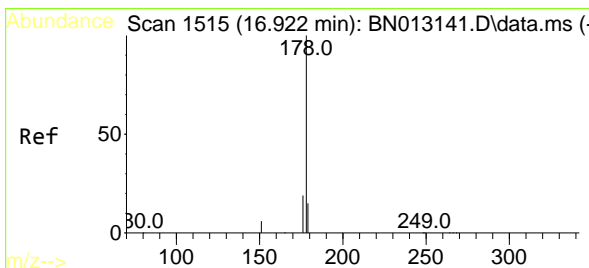
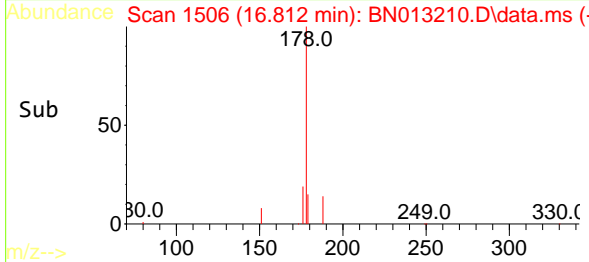
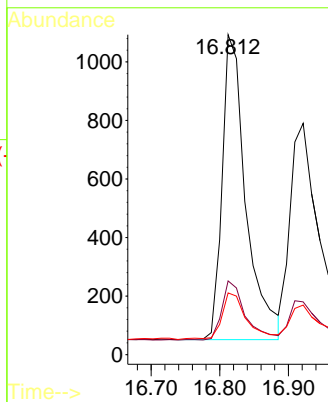
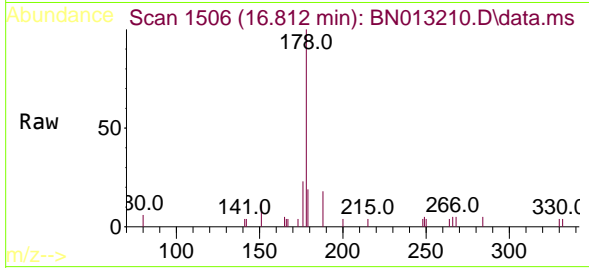


#25  
 Phenanthrene  
 Concen: 0.38 ng  
 RT: 16.812 min Scan# 1506  
 Delta R.T. 0.000 min  
 Lab File: BN013210.D  
 Acq: 18 Dec 2020 14:53

Instrument :  
 BNA\_N  
 ClientSampled :  
 SSTDCCC0.4

Tgt Ion:178 Resp: 2509

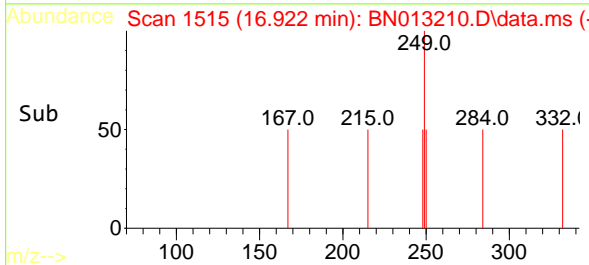
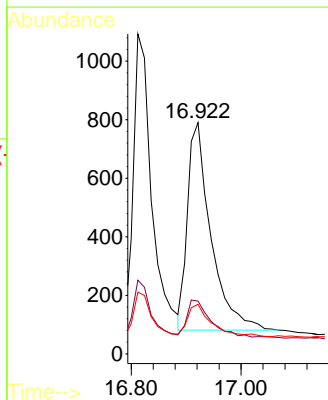
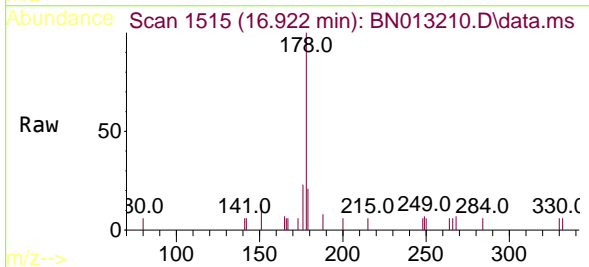
Ion	Ratio	Lower	Upper
178	100		
176	19.0	14.8	22.2
179	15.5	12.4	18.6

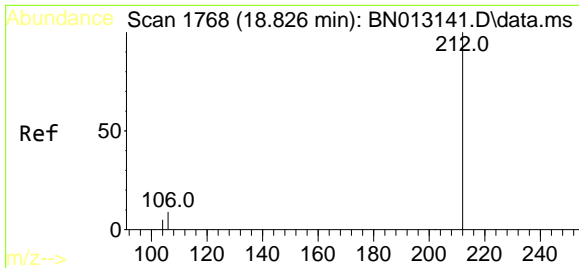


#26  
 Anthracene  
 Concen: 0.36 ng  
 RT: 16.922 min Scan# 1515  
 Delta R.T. 0.000 min  
 Lab File: BN013210.D  
 Acq: 18 Dec 2020 14:53

Tgt Ion:178 Resp: 2104

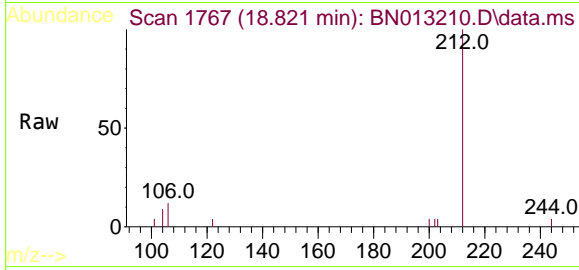
Ion	Ratio	Lower	Upper
178	100		
176	18.5	14.8	22.2
179	15.9	12.5	18.7





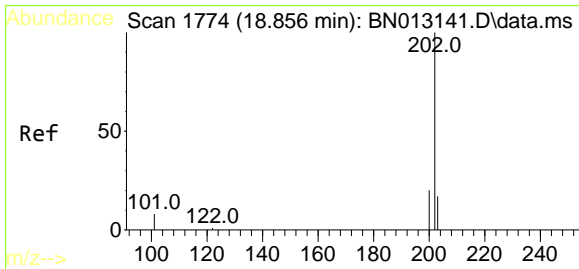
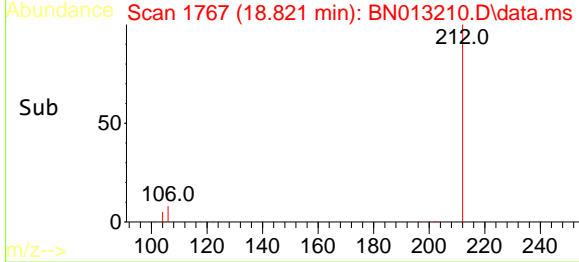
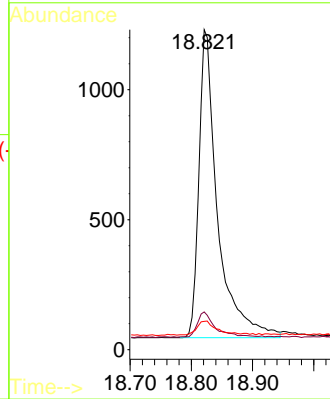
#27  
 Fluoranthene-d10  
 Concen: 0.38 ng  
 RT: 18.821 min Scan# 1767  
 Delta R.T. 0.000 min  
 Lab File: BN013210.D  
 Acq: 18 Dec 2020 14:53

Instrument :  
 BNA\_N  
 ClientSampled :  
 SSTDCCC0.4

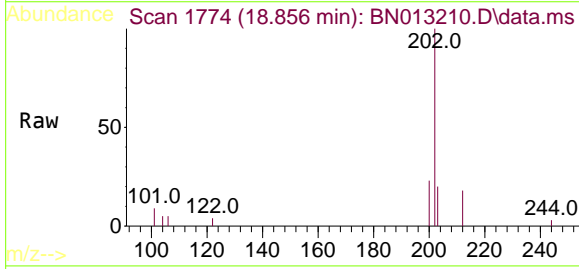


Tgt Ion: 212 Resp: 2506

Ion	Ratio	Lower	Upper
212	100		
106	7.6	6.8	10.2
104	4.6	4.1	6.1

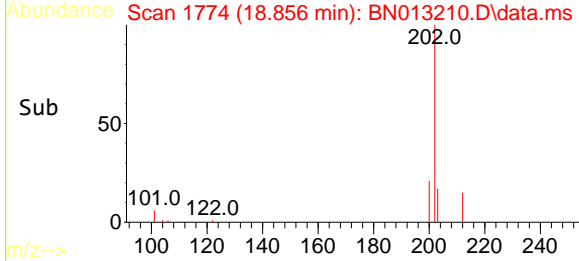
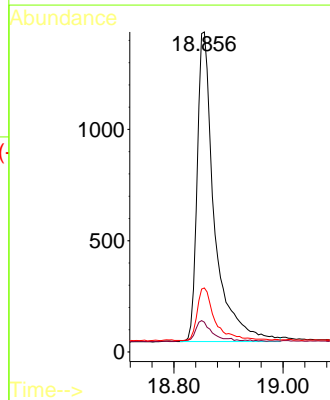


#28  
 Fluoranthene  
 Concen: 0.38 ng  
 RT: 18.856 min Scan# 1774  
 Delta R.T. 0.000 min  
 Lab File: BN013210.D  
 Acq: 18 Dec 2020 14:53

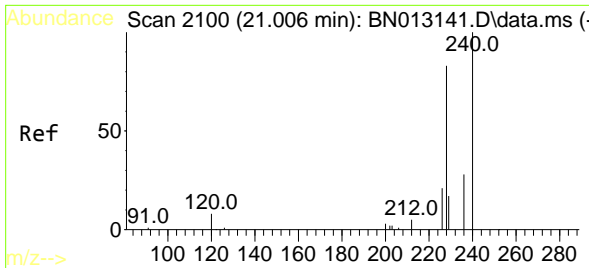


Tgt Ion: 202 Resp: 3059

Ion	Ratio	Lower	Upper
202	100		
101	6.7	5.8	8.6
203	17.7	13.7	20.5





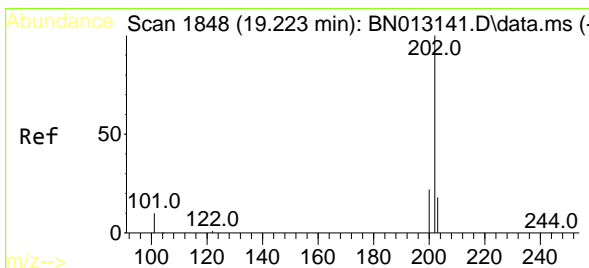
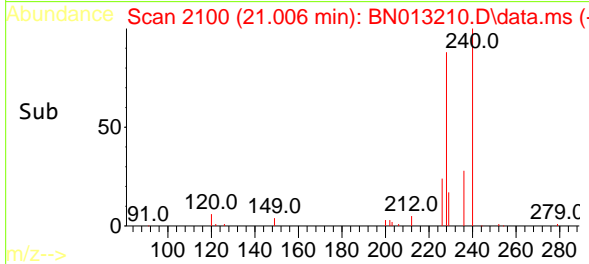
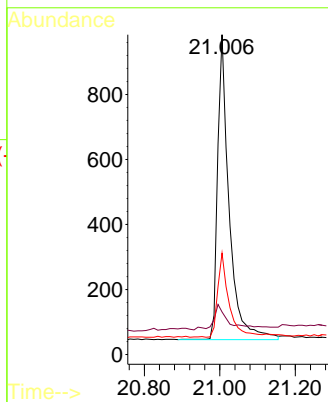
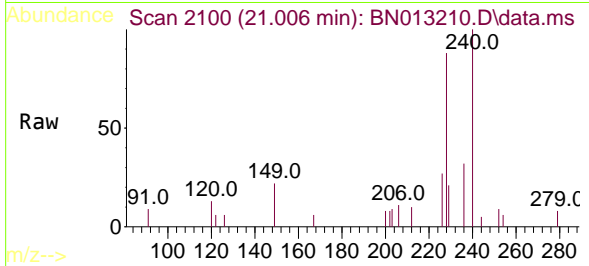


#29  
 Chrysene-d12  
 Concen: 0.40 ng  
 RT: 21.006 min Scan# 2100  
 Delta R.T. 0.000 min  
 Lab File: BN013210.D  
 Acq: 18 Dec 2020 14:53

Instrument :  
 BNA\_N  
 ClientSampled :  
 SSTDCCC0.4

Tgt Ion:240 Resp: 1989

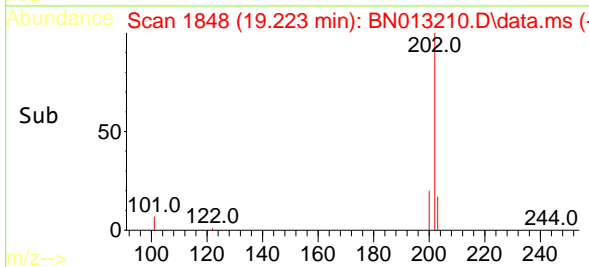
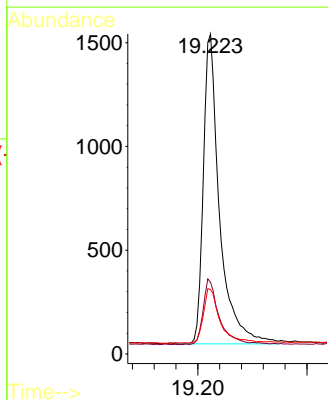
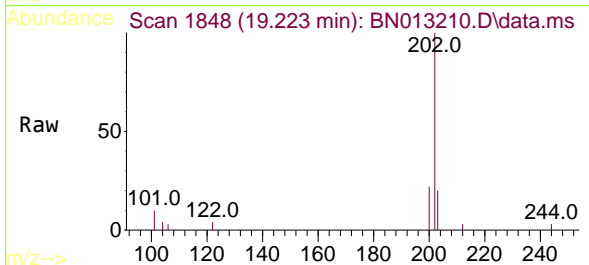
Ion	Ratio	Lower	Upper
240	100		
120	13.3	5.3	7.9#
236	31.7	21.8	32.8

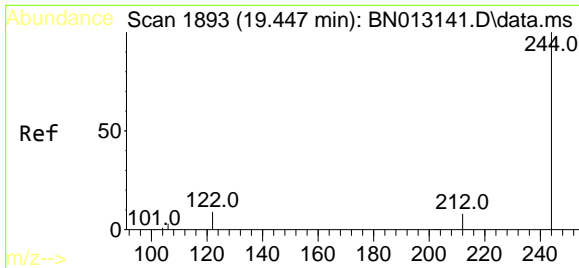


#30  
 Pyrene  
 Concen: 0.40 ng  
 RT: 19.223 min Scan# 1848  
 Delta R.T. 0.000 min  
 Lab File: BN013210.D  
 Acq: 18 Dec 2020 14:53

Tgt Ion:202 Resp: 3097

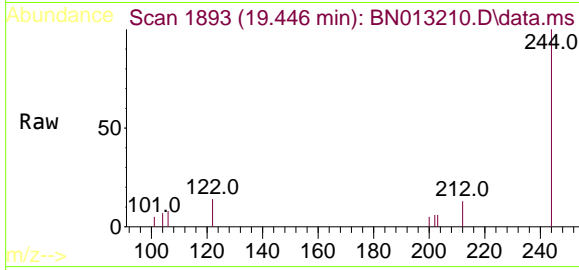
Ion	Ratio	Lower	Upper
202	100		
200	20.5	16.6	24.8
203	17.5	13.8	20.8





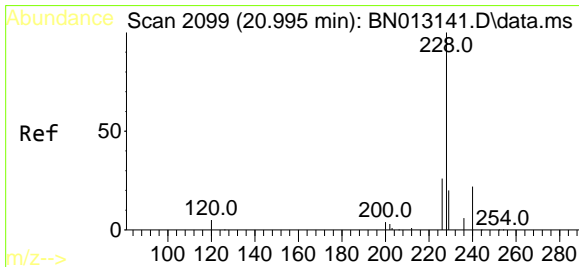
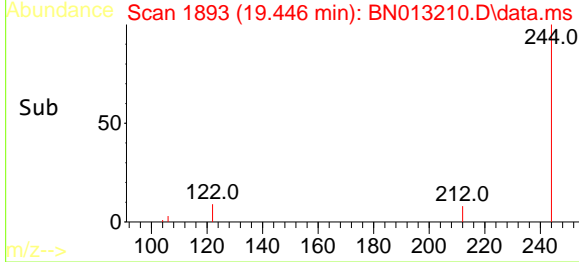
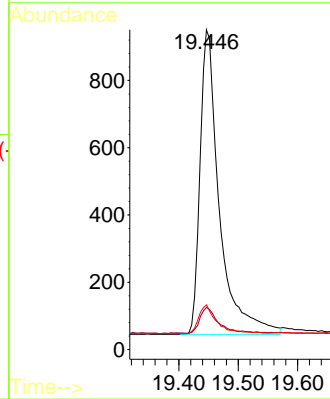
#31  
 Terphenyl-d14  
 Concen: 0.41 ng  
 RT: 19.446 min Scan# 1893  
 Delta R.T. 0.000 min  
 Lab File: BN013210.D  
 Acq: 18 Dec 2020 14:53

Instrument :  
 BNA\_N  
 ClientSampleId :  
 SSTDCCC0.4

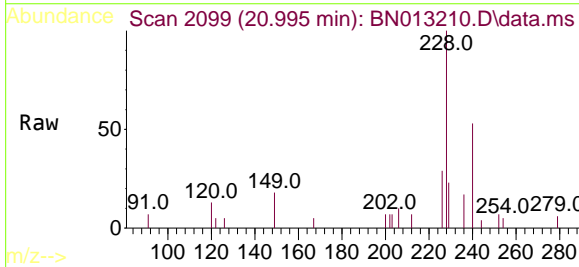


Tgt Ion:244 Resp: 2046

Ion	Ratio	Lower	Upper
244	100		
212	13.1	7.3	10.9#
122	14.0	7.3	10.9#

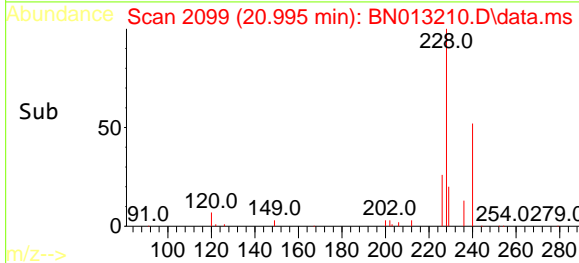
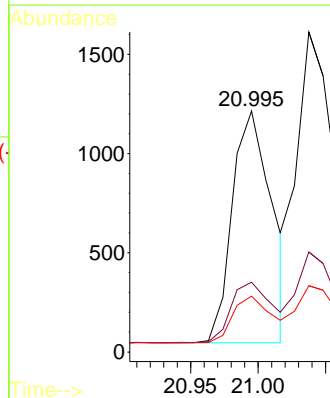


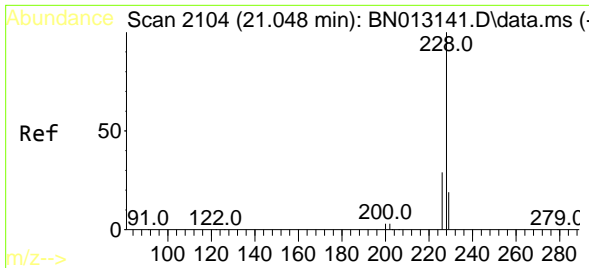
#32  
 Benzo(a)anthracene  
 Concen: 0.34 ng  
 RT: 20.995 min Scan# 2099  
 Delta R.T. 0.000 min  
 Lab File: BN013210.D  
 Acq: 18 Dec 2020 14:53



Tgt Ion:228 Resp: 2385

Ion	Ratio	Lower	Upper
228	100		
226	29.0	22.3	33.5
229	23.2	15.7	23.5



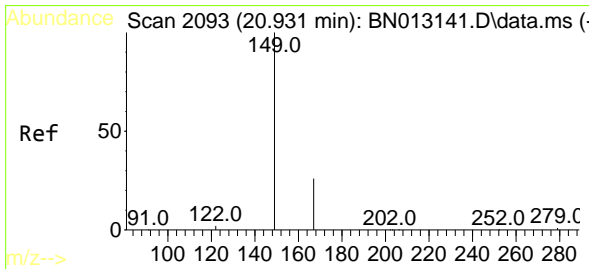
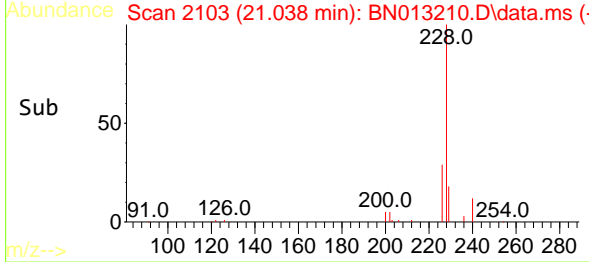
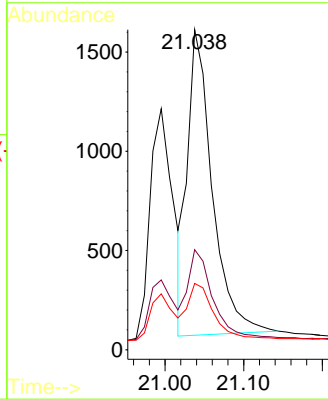
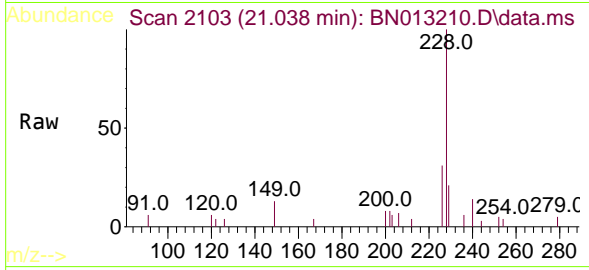


#33  
 Chrysene  
 Concen: 0.45 ng  
 RT: 21.038 min Scan# 2103  
 Delta R.T. 0.000 min  
 Lab File: BN013210.D  
 Acq: 18 Dec 2020 14:53

Instrument :  
 BNA\_N  
 ClientSampleId :  
 SSTDCCC0.4

Tgt Ion:228 Resp: 3360

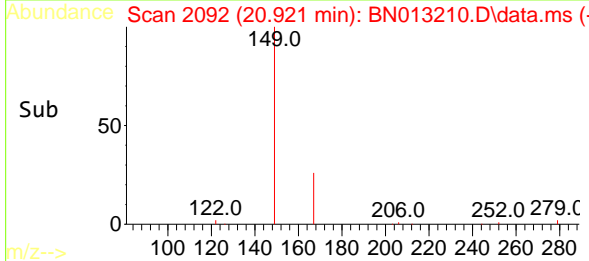
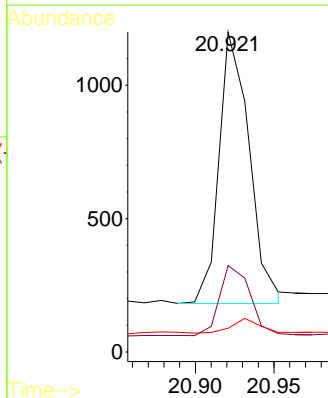
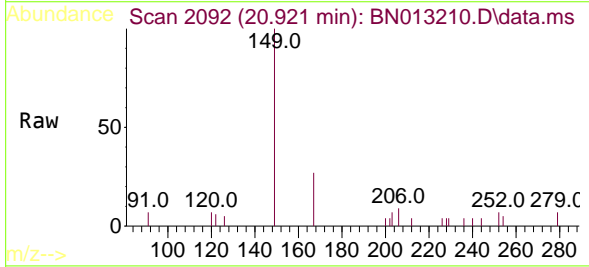
Ion	Ratio	Lower	Upper
228	100		
226	31.2	24.2	36.2
229	20.7	15.7	23.5

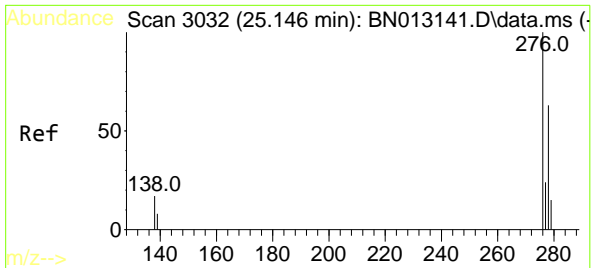


#34  
 Bis(2-ethylhexyl)phthalate  
 Concen: 0.12 ng  
 RT: 20.921 min Scan# 2092  
 Delta R.T. 0.000 min  
 Lab File: BN013210.D  
 Acq: 18 Dec 2020 14:53

Tgt Ion:149 Resp: 1358

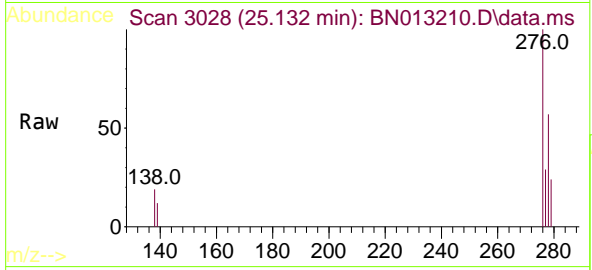
Ion	Ratio	Lower	Upper
149	100		
167	26.2	23.2	34.8
279	4.9	3.9	5.9



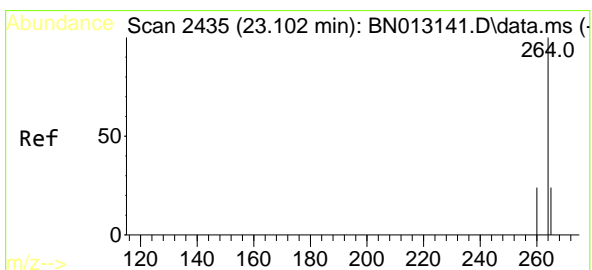
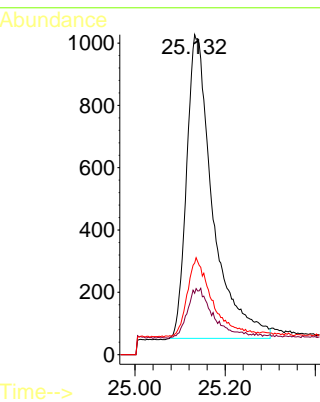
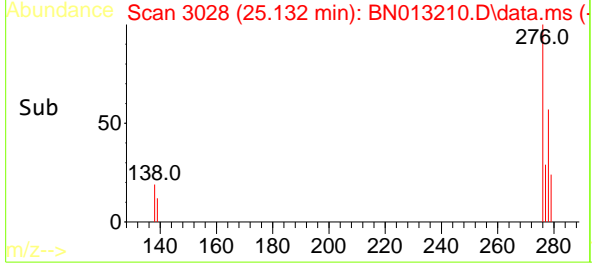


#35  
 Indeno(1,2,3-cd)pyrene  
 Concen: 0.38 ng  
 RT: 25.132 min Scan# 3028  
 Delta R.T. 0.000 min  
 Lab File: BN013210.D  
 Acq: 18 Dec 2020 14:53

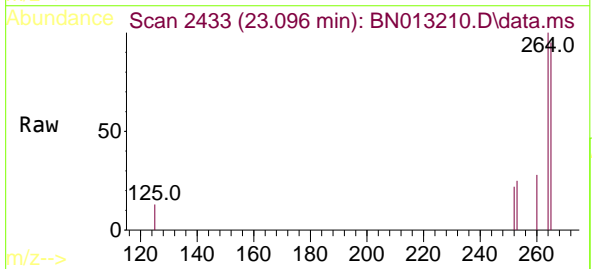
Instrument :  
 BNA\_N  
 ClientSampled :  
 SSTDCCC0.4



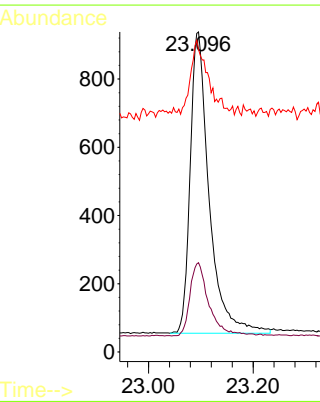
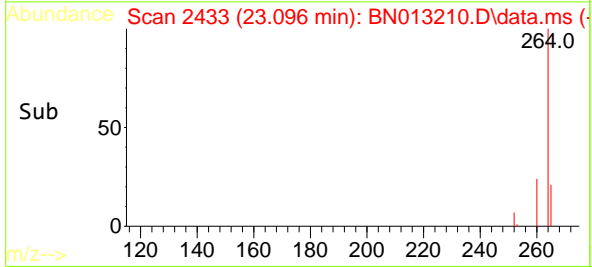
Tgt Ion:276 Resp: 3923  
 Ion Ratio Lower Upper  
 276 100  
 138 13.6 13.3 19.9  
 277 22.8 20.2 30.4

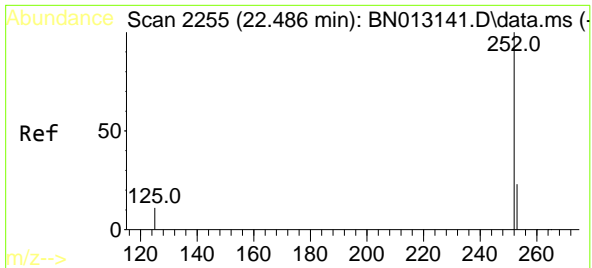


#36  
 Perylene-d12  
 Concen: 0.40 ng  
 RT: 23.096 min Scan# 2433  
 Delta R.T. 0.000 min  
 Lab File: BN013210.D  
 Acq: 18 Dec 2020 14:53



Tgt Ion:264 Resp: 2221  
 Ion Ratio Lower Upper  
 264 100  
 260 27.9 19.8 29.6  
 265 94.6 51.4 77.0#



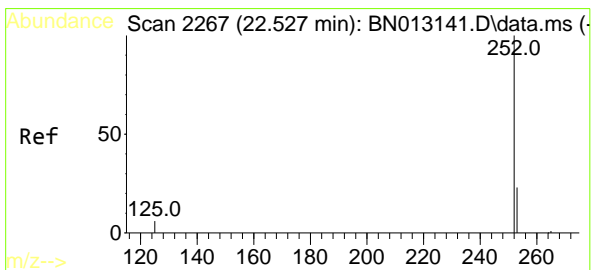
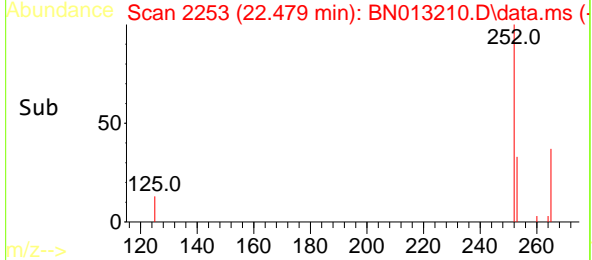
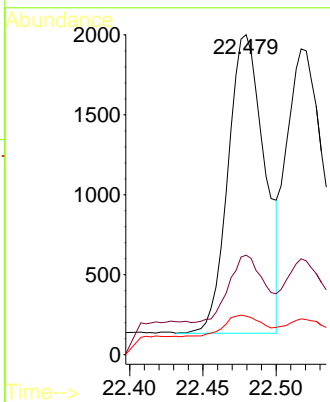
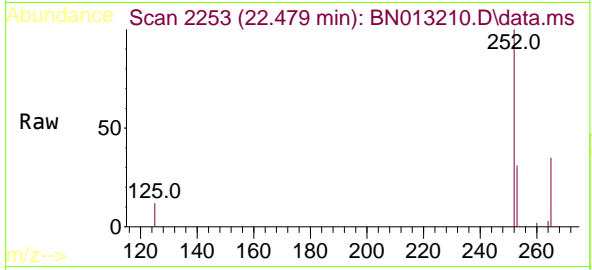


#37  
 Benzo(b)fluoranthene  
 Concen: 0.41 ng  
 RT: 22.479 min Scan# 2253  
 Delta R.T. 0.000 min  
 Lab File: BN013210.D  
 Acq: 18 Dec 2020 14:53

Instrument :  
 BNA\_N  
 ClientSampled :  
 SSTDCCC0.4

Tgt Ion:252 Resp: 3234

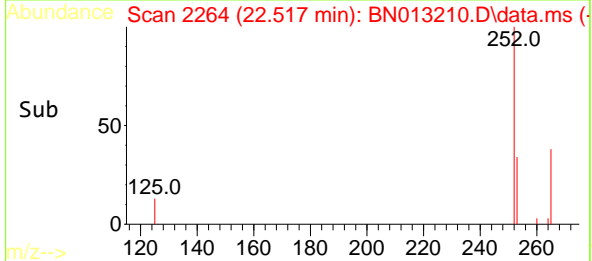
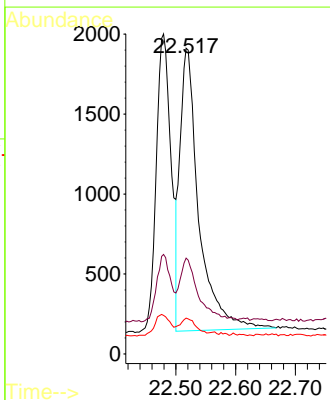
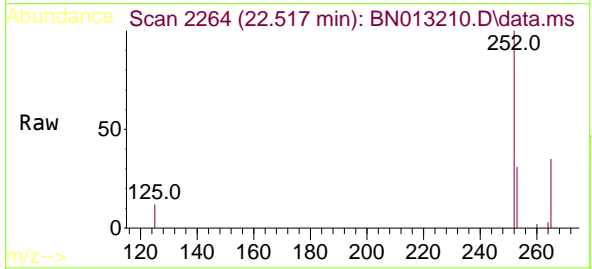
Ion	Ratio	Lower	Upper
252	100		
253	31.1	20.1	30.1#
125	12.0	7.2	10.8#

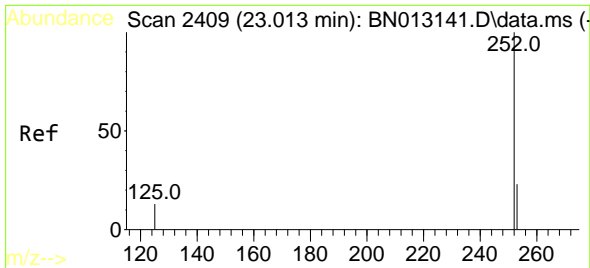


#38  
 Benzo(k)fluoranthene  
 Concen: 0.43 ng  
 RT: 22.517 min Scan# 2264  
 Delta R.T. 0.000 min  
 Lab File: BN013210.D  
 Acq: 18 Dec 2020 14:53

Tgt Ion:252 Resp: 3867

Ion	Ratio	Lower	Upper
252	100		
253	31.3	19.8	29.8#
125	11.7	7.1	10.7#

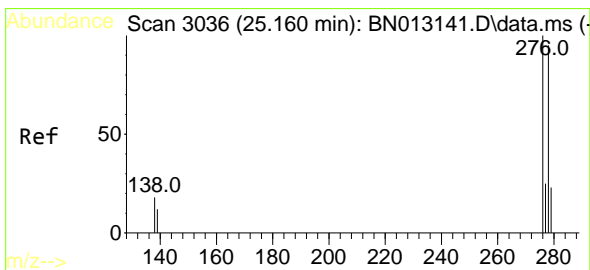
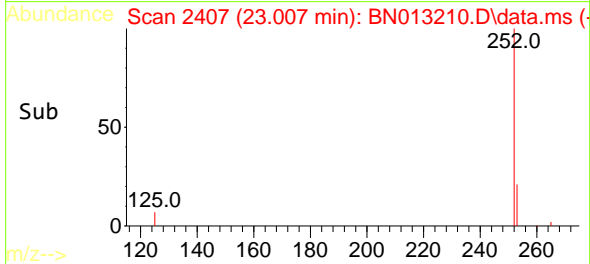
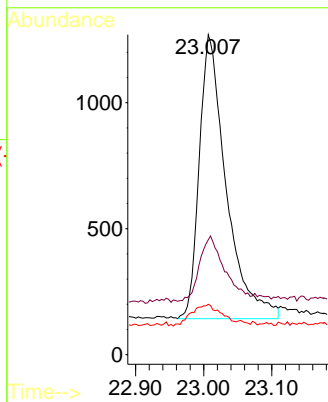
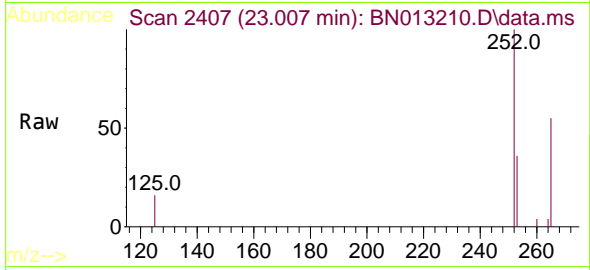




#39  
Benzo(a)pyrene  
Concen: 0.40 ng  
RT: 23.007 min Scan# 2407  
Delta R.T. 0.000 min  
Lab File: BN013210.D  
Acq: 18 Dec 2020 14:53

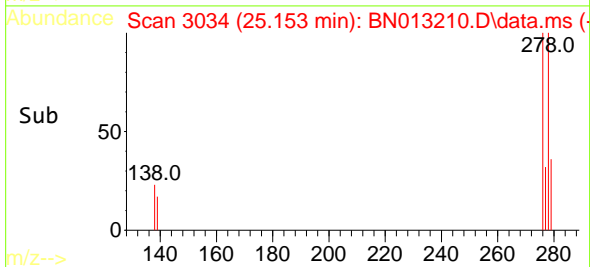
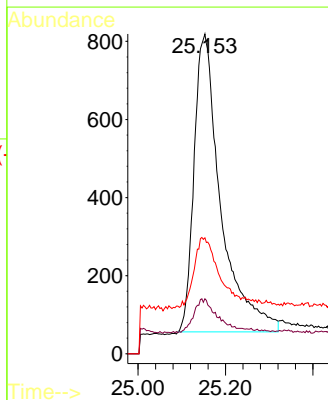
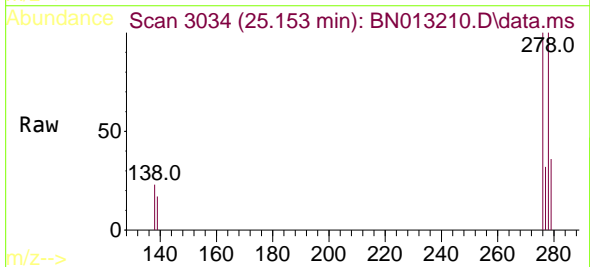
Instrument :  
BNA\_N  
ClientSampled :  
SSTDCCC0.4

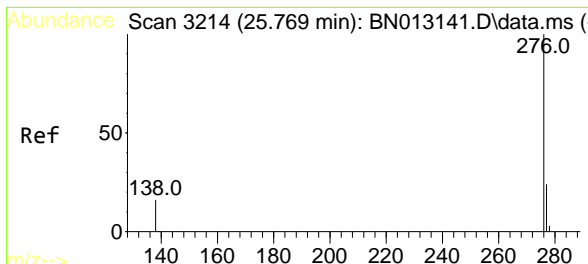
Tgt Ion:252 Resp: 3088  
Ion Ratio Lower Upper  
252 100  
253 35.9 21.3 31.9#  
125 15.7 8.3 12.5#



#40  
Dibenzo(a,h)anthracene  
Concen: 0.38 ng  
RT: 25.153 min Scan# 3034  
Delta R.T. 0.000 min  
Lab File: BN013210.D  
Acq: 18 Dec 2020 14:53

Tgt Ion:278 Resp: 3239  
Ion Ratio Lower Upper  
278 100  
139 17.2 9.3 13.9#  
279 36.3 21.6 32.4#





#41  
 Benzo(g,h,i)perylene  
 Concen: 0.42 ng  
 RT: 25.748 min Scan# 3208  
 Delta R.T. 0.000 min  
 Lab File: BN013210.D  
 Acq: 18 Dec 2020 14:53

Instrument :  
 BNA\_N  
 ClientSampled :  
 SSTDCCC0.4

Tgt Ion: 276 Resp: 3762

Ion	Ratio	Lower	Upper
276	100		
277	28.8	19.8	29.8
138	18.8	11.7	17.5#

