

Data Path : Z:\svoasrv\HPCHEM1\BNA_N\Data\BN121820\
 Data File : BN013212.D
 Acq On : 18 Dec 2020 17:17
 Operator : CG/JU
 Sample : L4996-22
 Misc :
 ALS Vial : 4 Sample Multiplier: 1

Instrument :
 BNA_N
 ClientSampleId :
 RE135D3-20201208

Quant Time: Dec 19 01:11:05 2020
 Quant Method : Z:\SVOASRV\HPCHEM1\BNA_N\METHODS\8270-SIM-BN121620.M
 Quant Title : ASP BNA STANDARDS FOR 5 POINT CALIBRATION
 QLast Update : Fri Dec 18 16:11:20 2020
 Response via : Initial Calibration

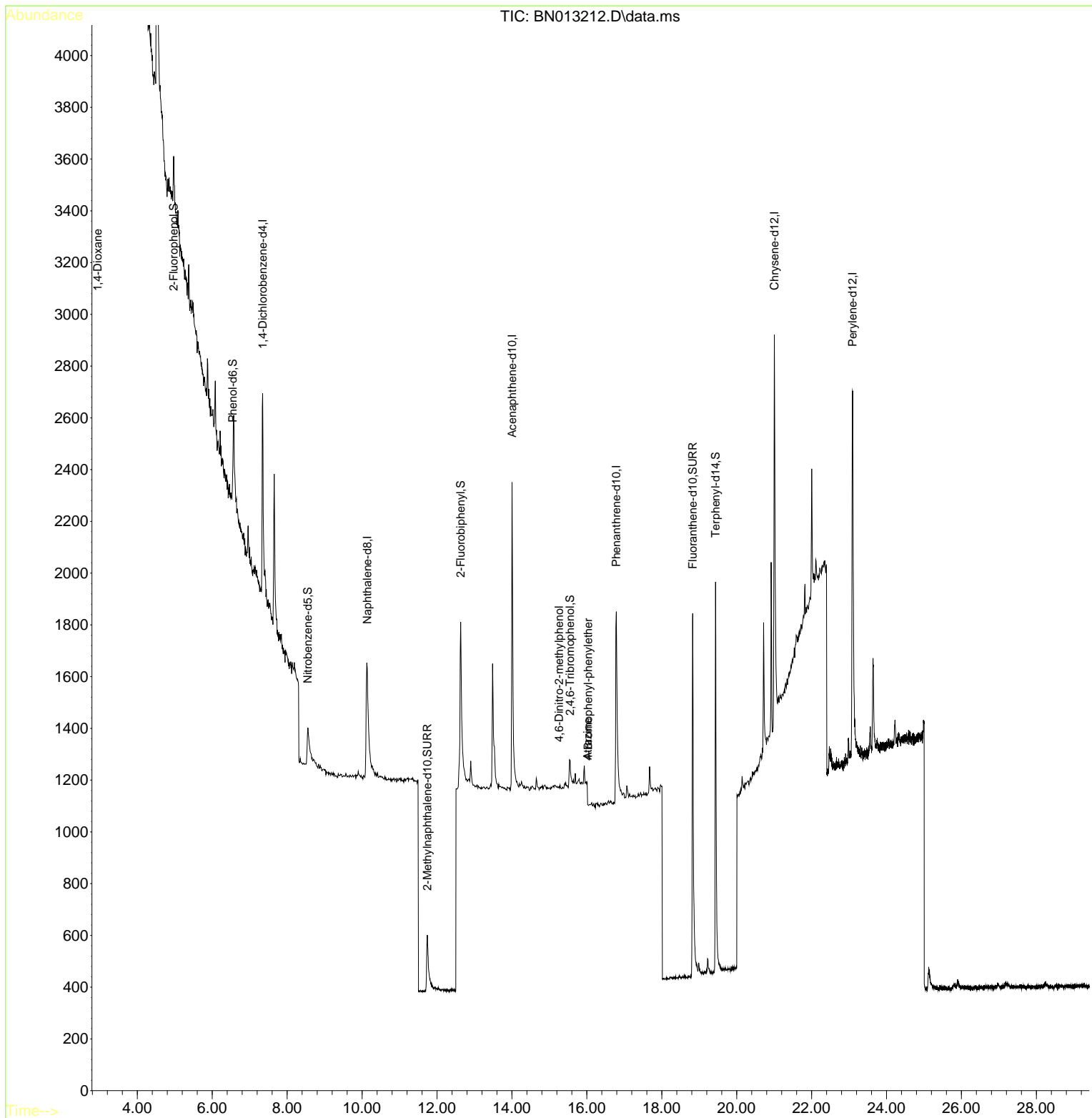
Compound	R.T.	QIon	Response	Conc	Units	Dev(Min)
Internal Standards						
1) 1,4-Dichlorobenzene-d4	7.346	152	546	0.40	ng	0.00
7) Naphthalene-d8	10.137	136	1433	0.40	ng	# 0.03
13) Acenaphthene-d10	14.004	164	931	0.40	ng	0.00
19) Phenanthrene-d10	16.788	188	2171	0.40	ng	# 0.01
29) Chrysene-d12	21.006	240	2312	0.40	ng	# 0.00
36) Perylene-d12	23.096	264	2592	0.40	ng	# 0.00
System Monitoring Compounds						
4) 2-Fluorophenol	4.970	112	233	0.10	ng	0.00
5) Phenol-d6	6.549	99	138	0.06	ng	0.00
8) Nitrobenzene-d5	8.553	82	398	0.27	ng	0.03
11) 2-Methylnaphthalene-d10	11.742	152	633	0.25	ng	0.02
14) 2,4,6-Tribromophenol	15.552	330	157	0.27	ng	0.01
15) 2-Fluorobiphenyl	12.633	172	1095	0.28	ng	0.00
27) Fluoranthene-d10	18.826	212	2645	0.37	ng	0.00
31) Terphenyl-d14	19.437	244	2344	0.40	ng	0.00
Target Compounds						
2) 1,4-Dioxane	2.941	88	327	0.34	ng	# 69
20) 4,6-Dinitro-2-methylph...	15.260	198	1	0.19	ng	# 1
21) 4-Bromophenyl-phenylether	16.033	248	134	0.32	ng	# 80
23) Atrazine	16.021	200	66	0.05	ng	# 1
34) Bis(2-ethylhexyl)phtha...	20.921	149	567	Below	Cal	100

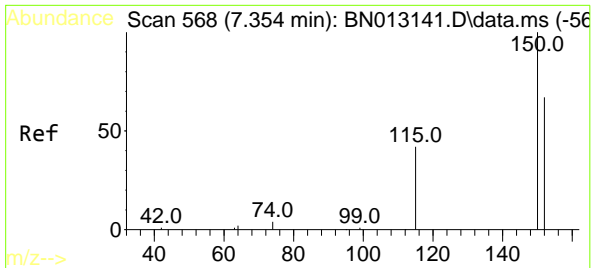
(#) = qualifier out of range (m) = manual integration (+) = signals summed

Data Path : Z:\svoasrv\HPCHEM1\BNA_N\Data\BN121820\
 Data File : BN013212.D
 Acq On : 18 Dec 2020 17:17
 Operator : CG/JU
 Sample : L4996-22
 Misc :
 ALS Vial : 4 Sample Multiplier: 1

Instrument :
 BNA_N
 ClientSampleId :
 RE135D3-20201208

Quant Time: Dec 19 01:11:05 2020
 Quant Method : Z:\SVOASRV\HPCHEM1\BNA_N\METHODS\8270-SIM-BN121620.M
 Quant Title : ASP BNA STANDARDS FOR 5 POINT CALIBRATION
 QLast Update : Fri Dec 18 16:11:20 2020
 Response via : Initial Calibration



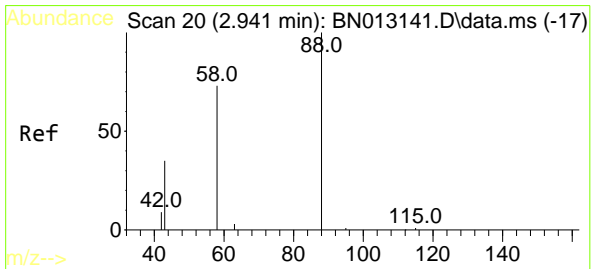
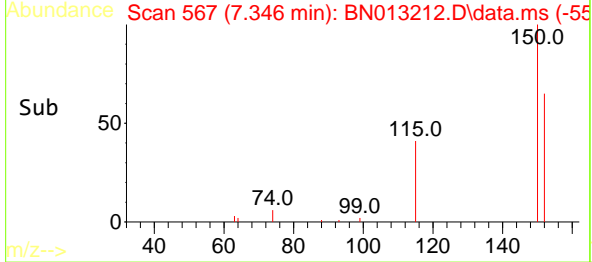
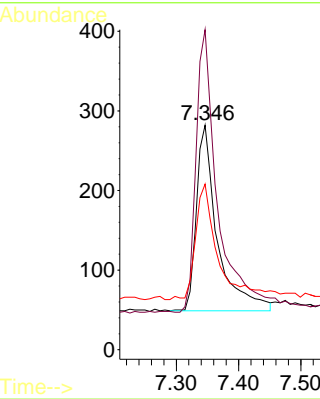
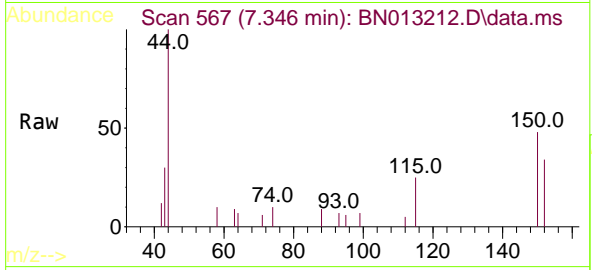


#1
 1,4-Dichlorobenzene-d4
 Concen: 0.40 ng
 RT: 7.346 min Scan# 567
 Delta R.T. 0.000 min
 Lab File: BN013212.D
 Acq: 18 Dec 2020 17:17

Instrument :
 BNA_N
ClientSampleId :
 RE135D3-20201208

Tgt Ion:152 Resp: 546

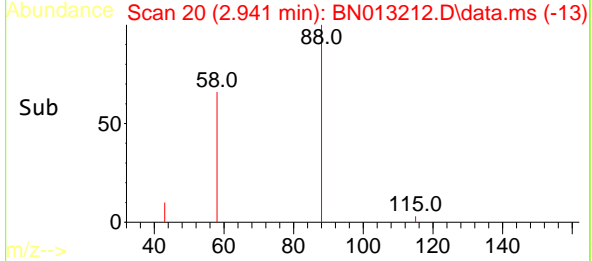
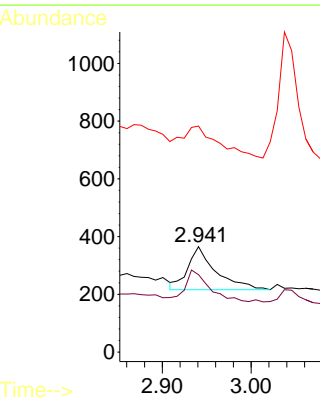
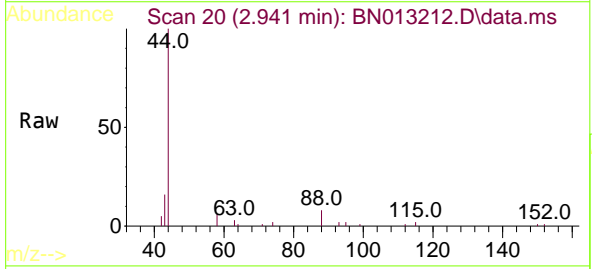
Ion	Ratio	Lower	Upper
152	100		
150	142.6	116.6	174.8
115	73.8	52.9	79.3

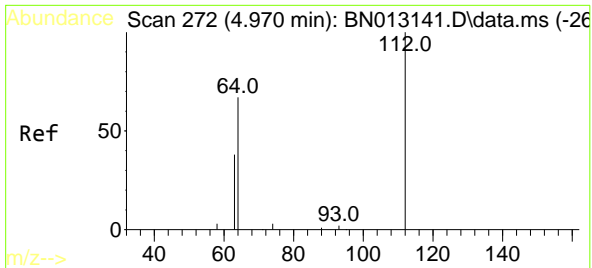


#2
 1,4-Dioxane
 Concen: 0.34 ng
 RT: 2.941 min Scan# 20
 Delta R.T. 0.008 min
 Lab File: BN013212.D
 Acq: 18 Dec 2020 17:17

Tgt Ion: 88 Resp: 327

Ion	Ratio	Lower	Upper
88	100		
58	60.2	59.4	89.2
43	76.5	32.3	48.5



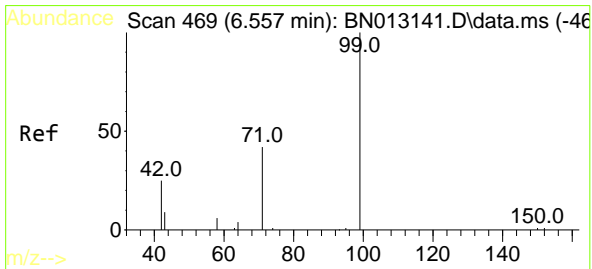
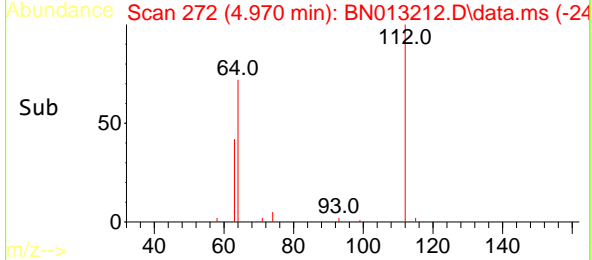
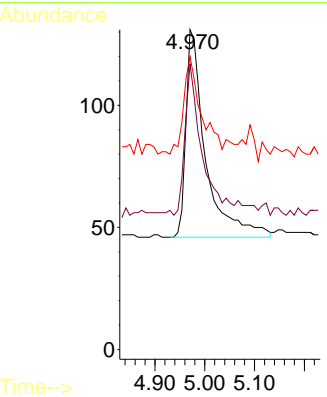
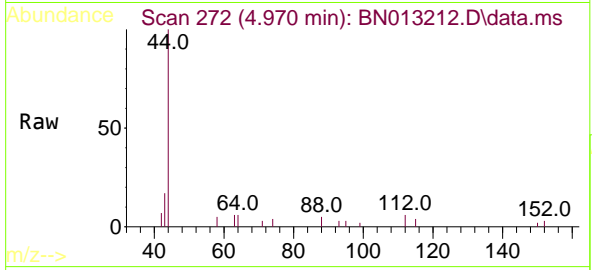


#4
 2-Fluorophenol
 Concen: 0.10 ng
 RT: 4.970 min Scan# 272
 Delta R.T. 0.008 min
 Lab File: BN013212.D
 Acq: 18 Dec 2020 17:17

Instrument :
 BNA_N
ClientSampled :
 RE135D3-20201208

Tgt Ion: 112 Resp: 233

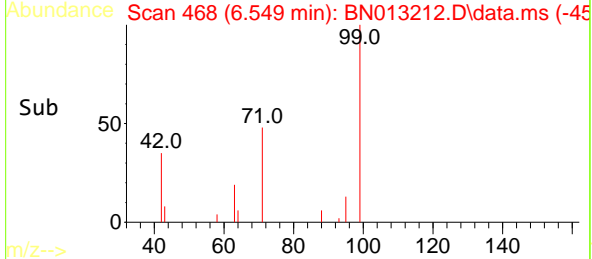
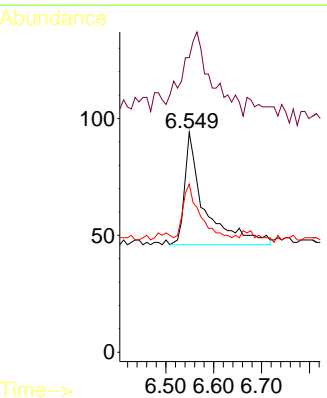
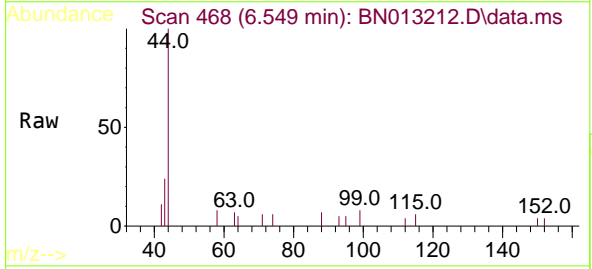
Ion	Ratio	Lower	Upper
112	100		
64	62.2	49.5	74.3
63	39.9	32.0	48.0

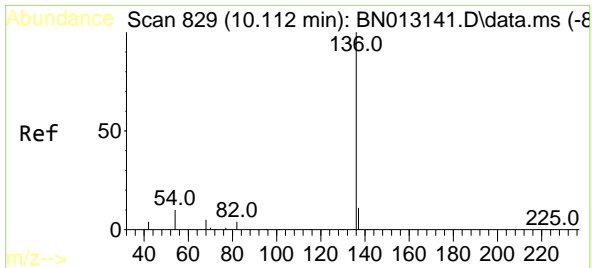


#5
 Phenol-d6
 Concen: 0.06 ng
 RT: 6.549 min Scan# 468
 Delta R.T. 0.000 min
 Lab File: BN013212.D
 Acq: 18 Dec 2020 17:17

Tgt Ion: 99 Resp: 138

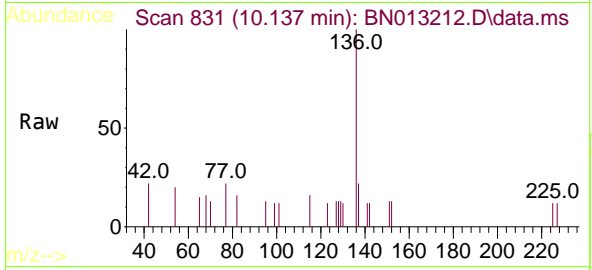
Ion	Ratio	Lower	Upper
99	100		
42	108.7	22.4	33.6#
71	41.3	37.8	56.6





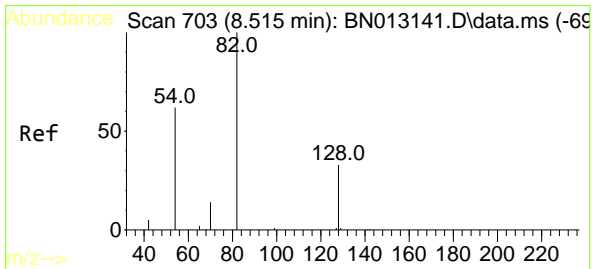
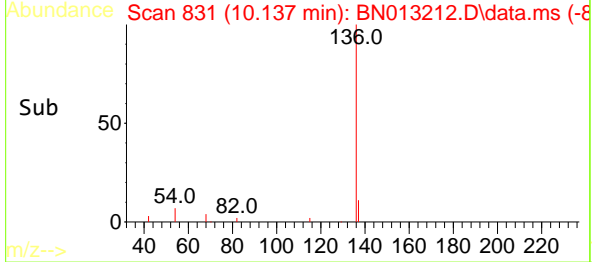
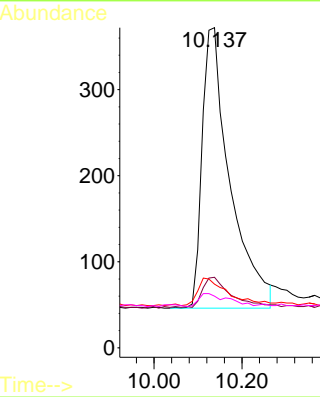
#7
 Naphthalene-d8
 Concen: 0.40 ng
 RT: 10.137 min Scan# 831
 Delta R.T. 0.025 min
 Lab File: BN013212.D
 Acq: 18 Dec 2020 17:17

Instrument :
 BNA_N
ClientSampleId :
 RE135D3-20201208

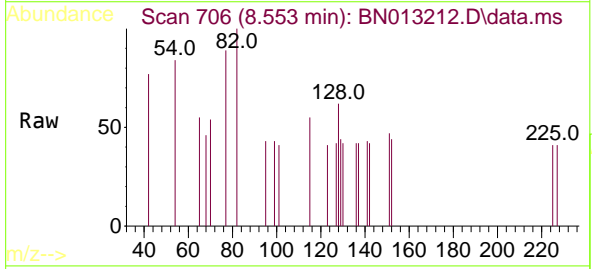


Tgt Ion: 136 Resp: 1433

Ion	Ratio	Lower	Upper
136	100		
137	22.0	10.6	15.8#
54	19.9	8.6	12.8#
68	16.1	5.7	8.5#

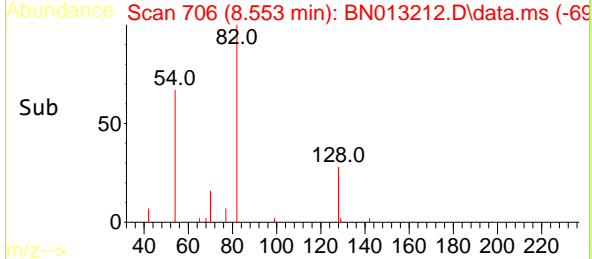
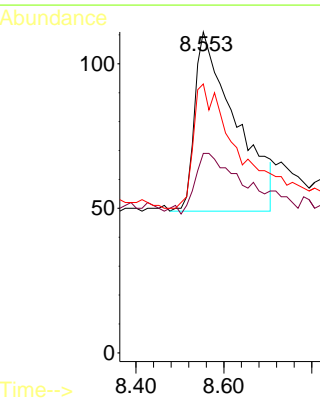


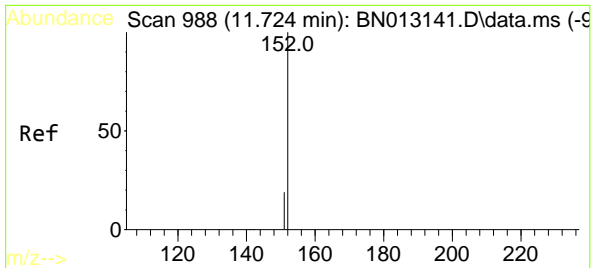
#8
 Nitrobenzene-d5
 Concen: 0.27 ng
 RT: 8.553 min Scan# 706
 Delta R.T. 0.025 min
 Lab File: BN013212.D
 Acq: 18 Dec 2020 17:17



Tgt Ion: 82 Resp: 398

Ion	Ratio	Lower	Upper
82	100		
128	62.2	30.6	46.0#
54	83.8	48.3	72.5#

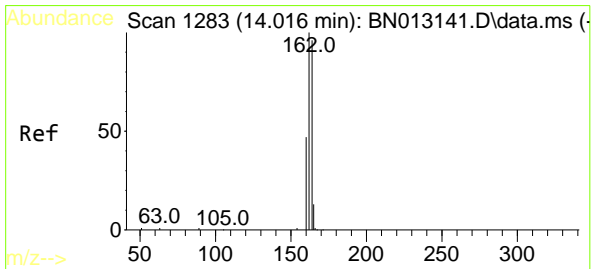
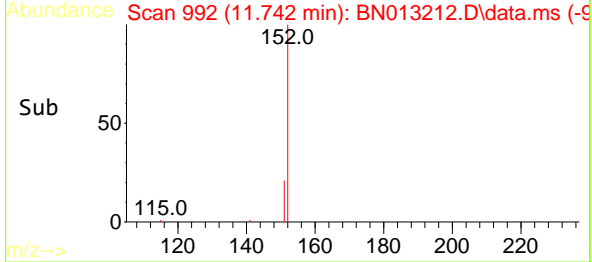
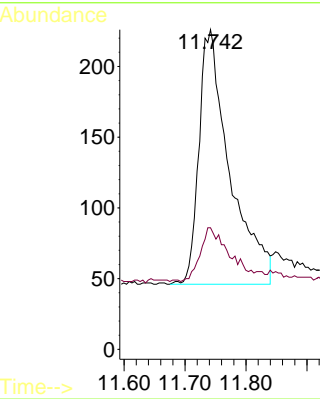
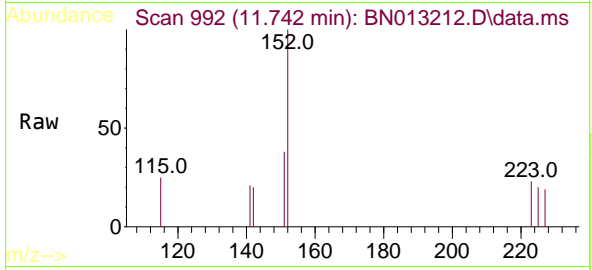




#11
 2-Methylnaphthalene-d10
 Concen: 0.25 ng
 RT: 11.742 min Scan# 992
 Delta R.T. 0.018 min
 Lab File: BN013212.D
 Acq: 18 Dec 2020 17:17

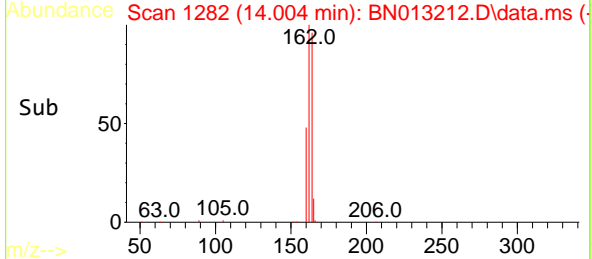
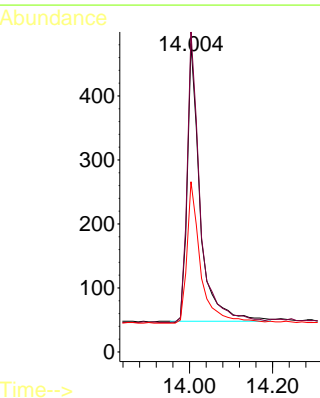
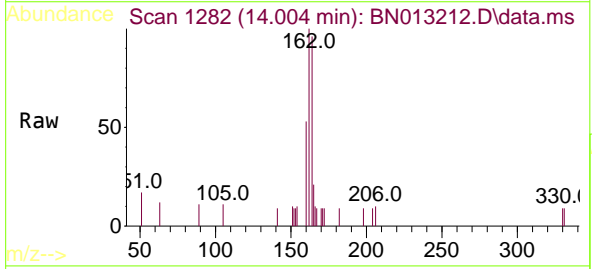
Instrument :
 BNA_N
ClientSampleId :
 RE135D3-20201208

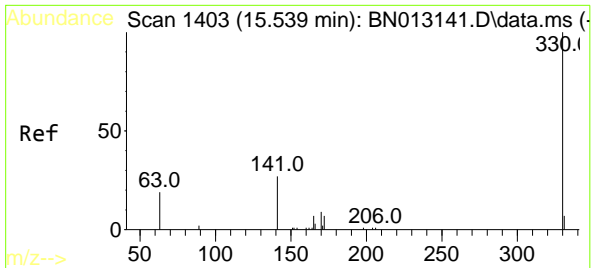
Tgt Ion:152 Resp: 633
 Ion Ratio Lower Upper
 152 100
 151 0.0 16.7 25.1#



#13
 Acenaphthene-d10
 Concen: 0.40 ng
 RT: 14.004 min Scan# 1282
 Delta R.T. 0.000 min
 Lab File: BN013212.D
 Acq: 18 Dec 2020 17:17

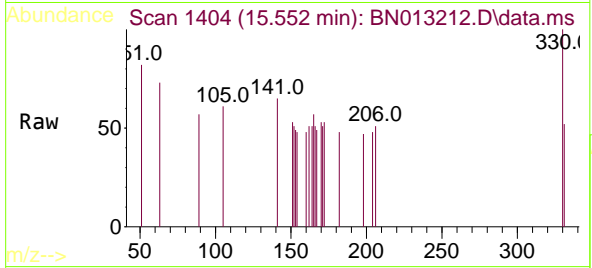
Tgt Ion:164 Resp: 931
 Ion Ratio Lower Upper
 164 100
 162 103.7 80.6 120.8
 160 55.2 39.5 59.3



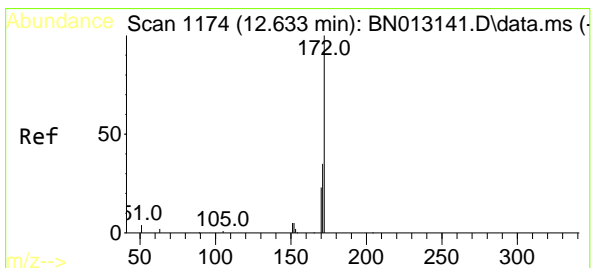
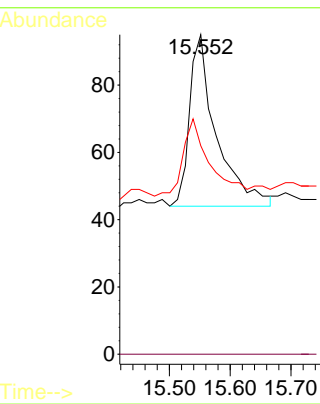
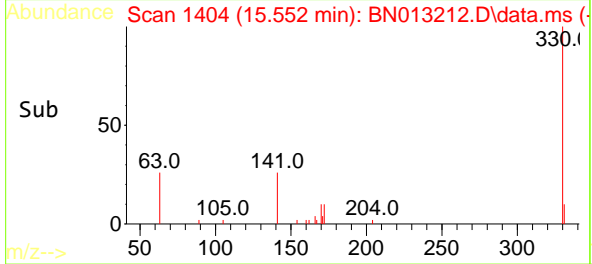


#14
 2,4,6-Tribromophenol
 Concen: 0.27 ng
 RT: 15.552 min Scan# 1404
 Delta R.T. 0.013 min
 Lab File: BN013212.D
 Acq: 18 Dec 2020 17:17

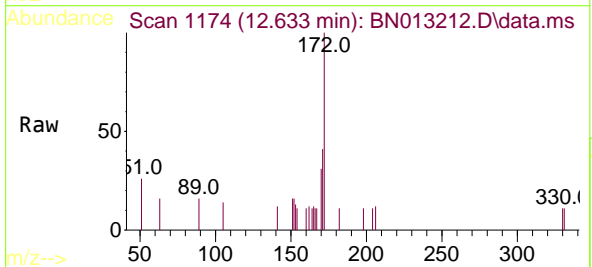
Instrument :
 BNA_N
 ClientSampleId :
 RE135D3-20201208



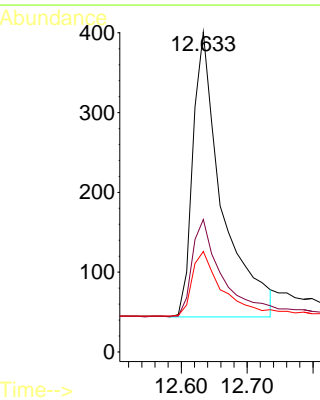
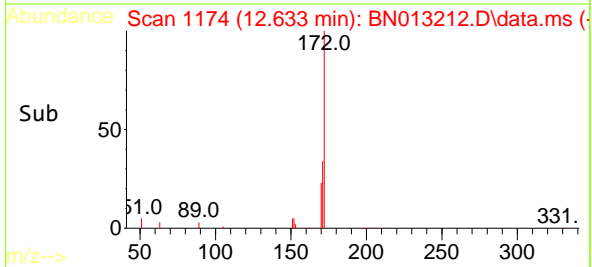
Tgt Ion: 330 Resp: 157
 Ion Ratio Lower Upper
 330 100
 332 0.0 0.0 0.0
 141 45.9 34.4 51.6

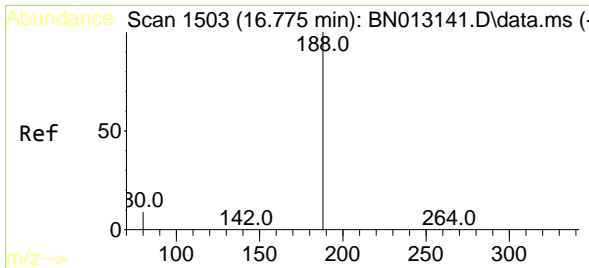


#15
 2-Fluorobiphenyl
 Concen: 0.28 ng
 RT: 12.633 min Scan# 1174
 Delta R.T. 0.000 min
 Lab File: BN013212.D
 Acq: 18 Dec 2020 17:17



Tgt Ion: 172 Resp: 1095
 Ion Ratio Lower Upper
 172 100
 171 41.4 28.2 42.4
 170 31.4 20.0 30.0#



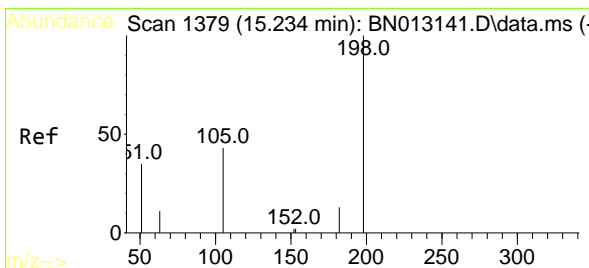
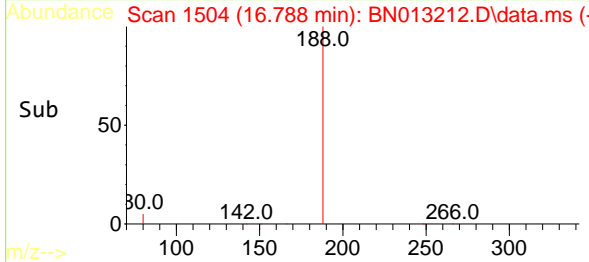
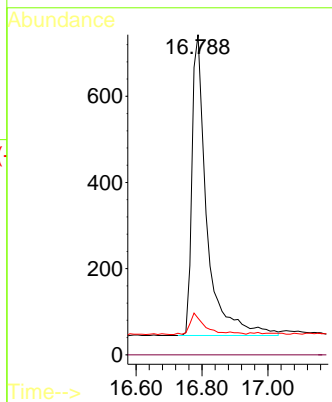
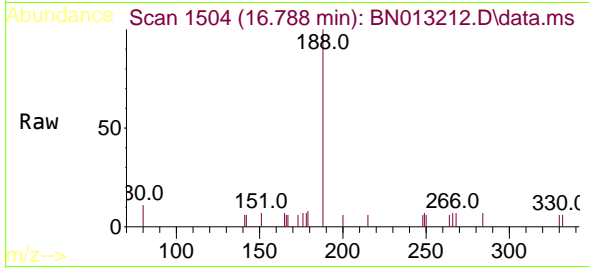


#19
 Phenanthrene-d10
 Concen: 0.40 ng
 RT: 16.788 min Scan# 1504
 Delta R.T. 0.012 min
 Lab File: BN013212.D
 Acq: 18 Dec 2020 17:17

Instrument :
 BNA_N
 ClientSampleId :
 RE135D3-20201208

Tgt Ion:188 Resp: 2171

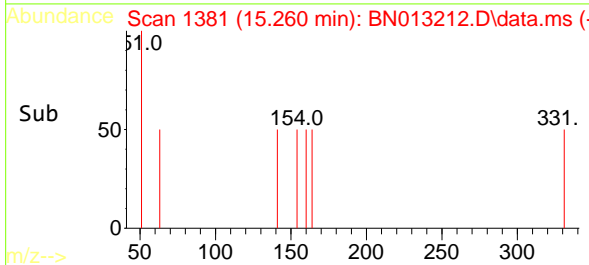
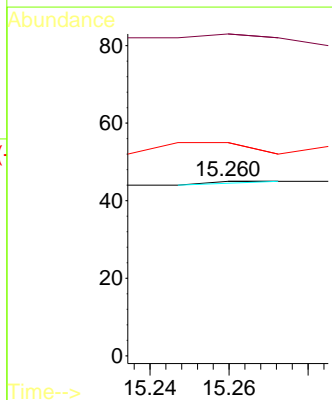
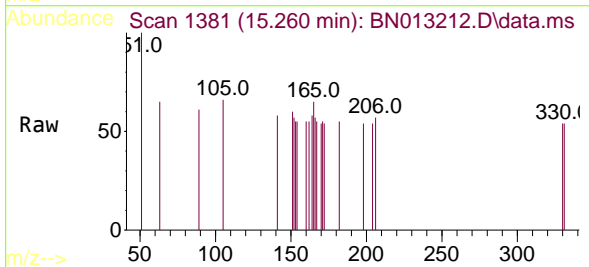
Ion	Ratio	Lower	Upper
188	100		
94	0.0	0.0	0.0
80	11.4	5.0	7.4#

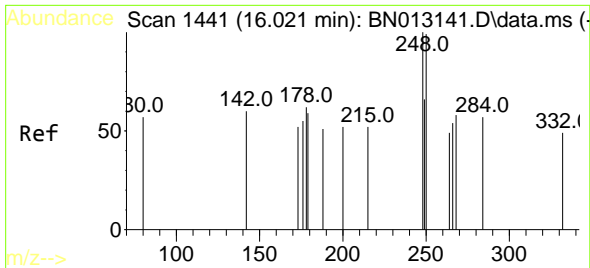


#20
 4,6-Dinitro-2-methylphenol
 Concen: 0.19 ng
 RT: 15.260 min Scan# 1381
 Delta R.T. 0.000 min
 Lab File: BN013212.D
 Acq: 18 Dec 2020 17:17

Tgt Ion:198 Resp: 1

Ion	Ratio	Lower	Upper
198	100		
51	184.4	43.5	65.3#
105	122.2	27.2	40.8#

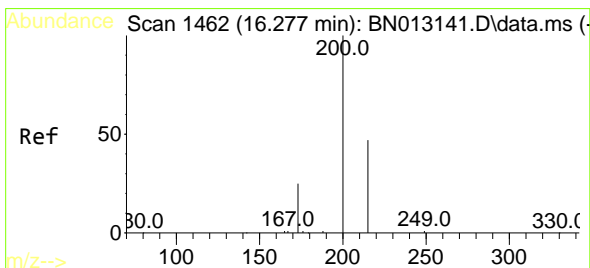
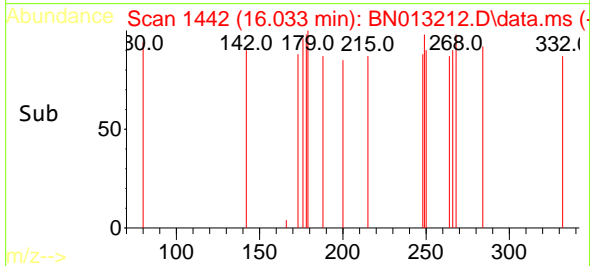
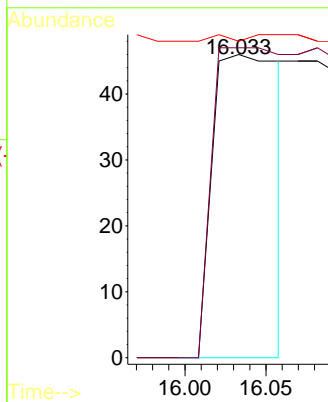
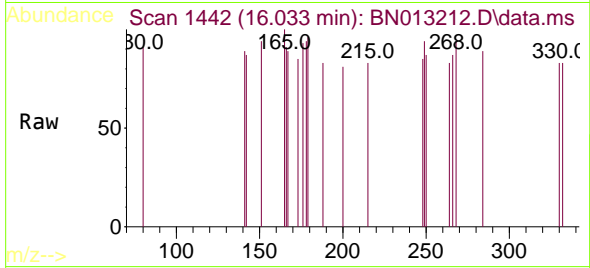




#21
 4-Bromophenyl-phenylether
 Concen: 0.32 ng
 RT: 16.033 min Scan# 1442
 Delta R.T. 0.012 min
 Lab File: BN013212.D
 Acq: 18 Dec 2020 17:17

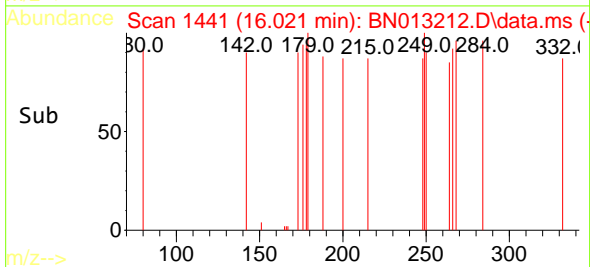
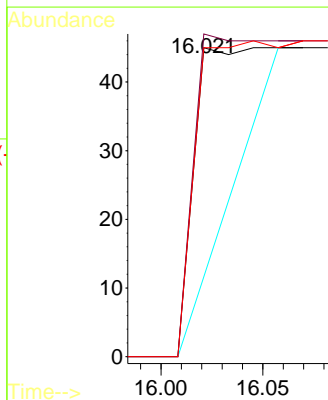
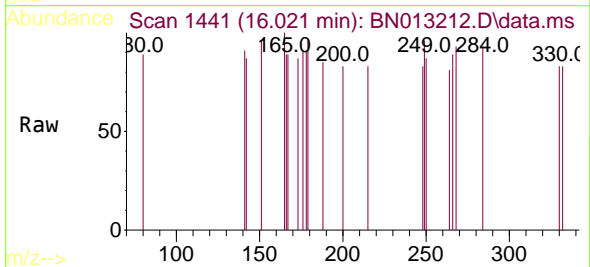
Instrument :
 BNA_N
 ClientSampleId :
 RE135D3-20201208

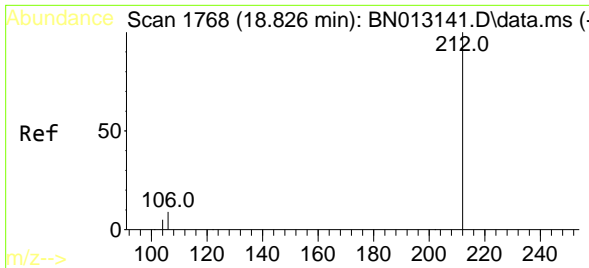
Tgt Ion:248 Resp: 134
 Ion Ratio Lower Upper
 248 100
 250 102.2 77.3 115.9
 141 104.3 57.8 86.8#



#23
 Atrazine
 Concen: 0.05 ng
 RT: 16.021 min Scan# 1441
 Delta R.T. -0.256 min
 Lab File: BN013212.D
 Acq: 18 Dec 2020 17:17

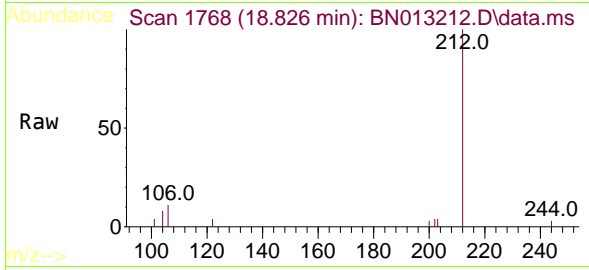
Tgt Ion:200 Resp: 66
 Ion Ratio Lower Upper
 200 100
 173 104.4 22.8 34.2#
 215 100.0 38.1 57.1#



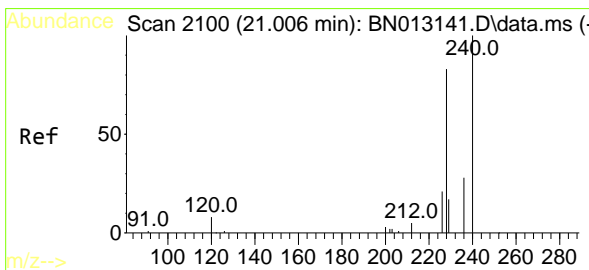
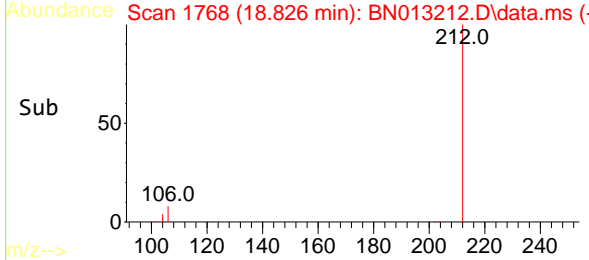
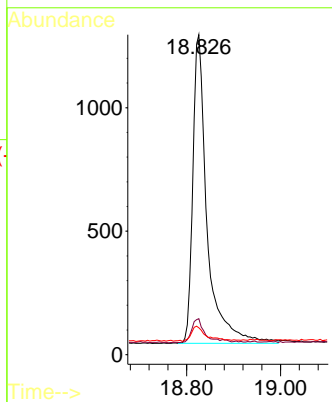


#27
 Fluoranthene-d10
 Concen: 0.37 ng
 RT: 18.826 min Scan# 1768
 Delta R.T. 0.005 min
 Lab File: BN013212.D
 Acq: 18 Dec 2020 17:17

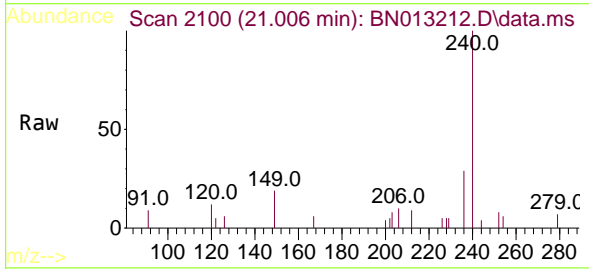
Instrument :
 BNA_N
 ClientSampled :
 RE135D3-20201208



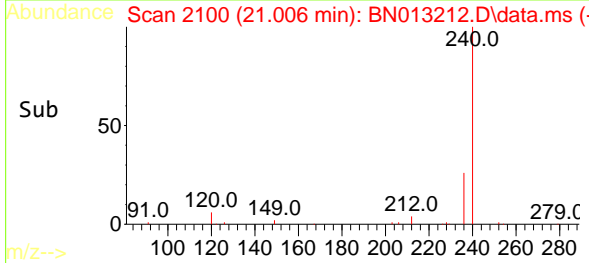
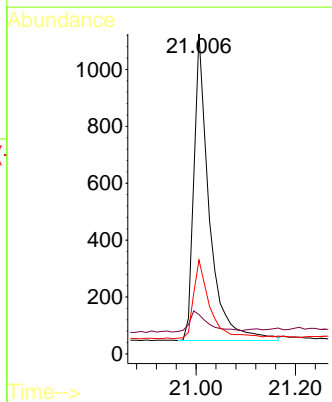
Tgt Ion:212 Resp: 2645
 Ion Ratio Lower Upper
 212 100
 106 6.8 6.8 10.2
 104 4.7 4.1 6.1

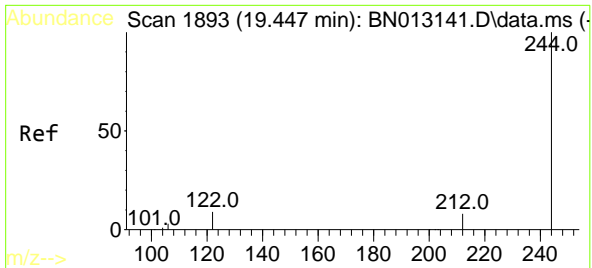


#29
 Chrysene-d12
 Concen: 0.40 ng
 RT: 21.006 min Scan# 2100
 Delta R.T. 0.000 min
 Lab File: BN013212.D
 Acq: 18 Dec 2020 17:17



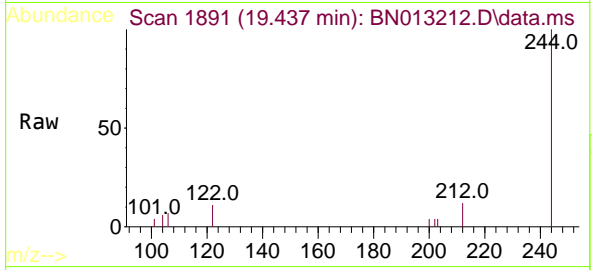
Tgt Ion:240 Resp: 2312
 Ion Ratio Lower Upper
 240 100
 120 12.3 5.3 7.9#
 236 29.3 21.8 32.8





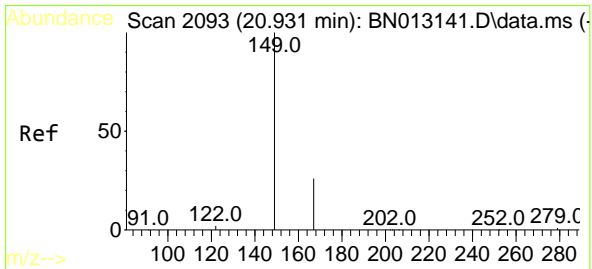
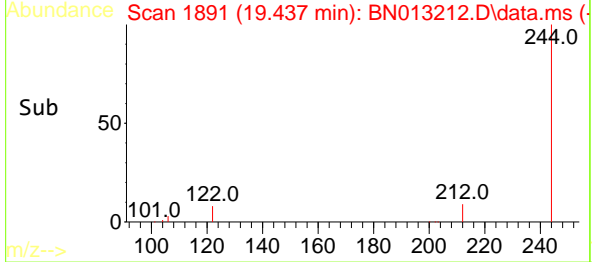
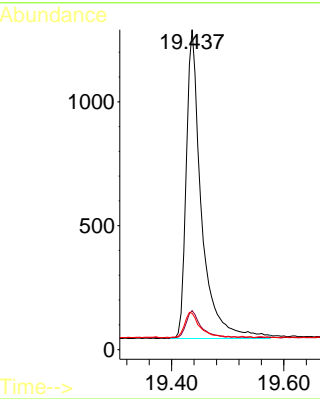
#31
 Terphenyl-d14
 Concen: 0.40 ng
 RT: 19.437 min Scan# 1891
 Delta R.T. -0.010 min
 Lab File: BN013212.D
 Acq: 18 Dec 2020 17:17

Instrument :
 BNA_N
ClientSampleId :
 RE135D3-20201208

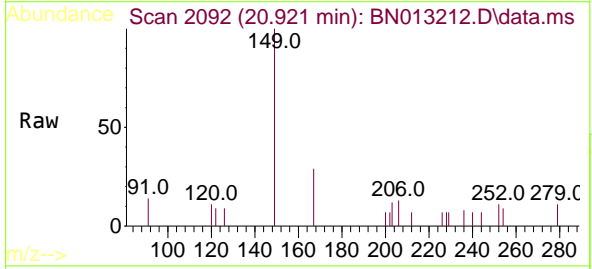


Tgt Ion:244 Resp: 2344

Ion	Ratio	Lower	Upper
244	100		
212	12.2	7.3	10.9#
122	11.3	7.3	10.9#

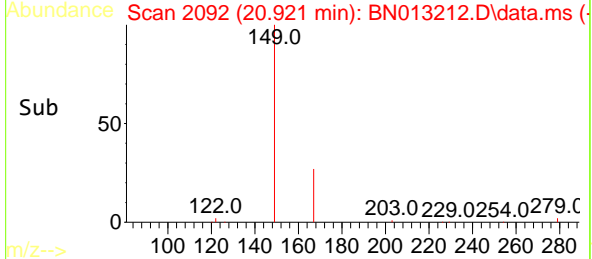
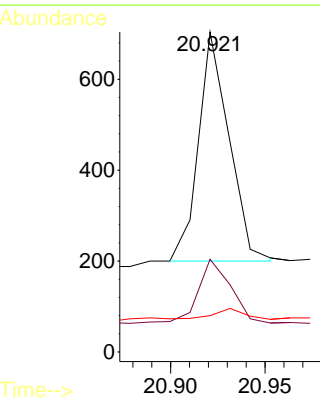


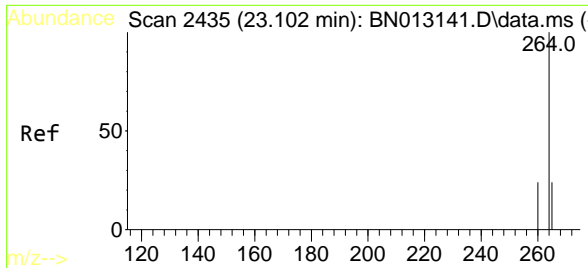
#34
 Bis(2-ethylhexyl)phthalate
 Concen: Below Cal
 RT: 20.921 min Scan# 2092
 Delta R.T. 0.000 min
 Lab File: BN013212.D
 Acq: 18 Dec 2020 17:17



Tgt Ion:149 Resp: 567

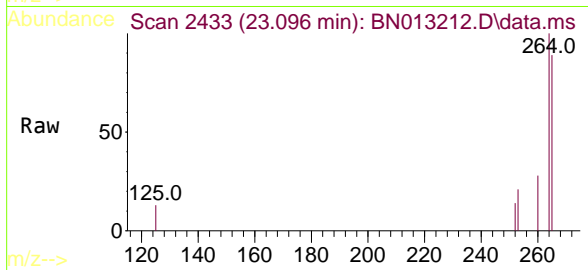
Ion	Ratio	Lower	Upper
149	100		
167	29.1	23.2	34.8
279	4.6	3.9	5.9





#36
 Perylene-d12
 Concen: 0.40 ng
 RT: 23.096 min Scan# 2433
 Delta R.T. 0.000 min
 Lab File: BN013212.D
 Acq: 18 Dec 2020 17:17

Instrument :
 BNA_N
ClientSampleId :
 RE135D3-20201208



Tgt Ion:264 Resp: 2592

Ion	Ratio	Lower	Upper
264	100		
260	28.0	19.8	29.6
265	89.2	51.4	77.0#

