

Data Path : Z:\svoasrv\HPCHEM1\BNA_N\Data\BN121820\
 Data File : BN013218.D
 Acq On : 18 Dec 2020 20:54
 Operator : CG/JU
 Sample : L5053-10DL 2X
 Misc :
 ALS Vial : 10 Sample Multiplier: 1

Instrument :
 BNA_N
 ClientSampleId :
 RE125D2-20201210DL

Quant Time: Dec 19 01:11:59 2020
 Quant Method : Z:\SVOASRV\HPCHEM1\BNA_N\METHODS\8270-SIM-BN121620.M
 Quant Title : ASP BNA STANDARDS FOR 5 POINT CALIBRATION
 QLast Update : Fri Dec 18 16:11:20 2020
 Response via : Initial Calibration

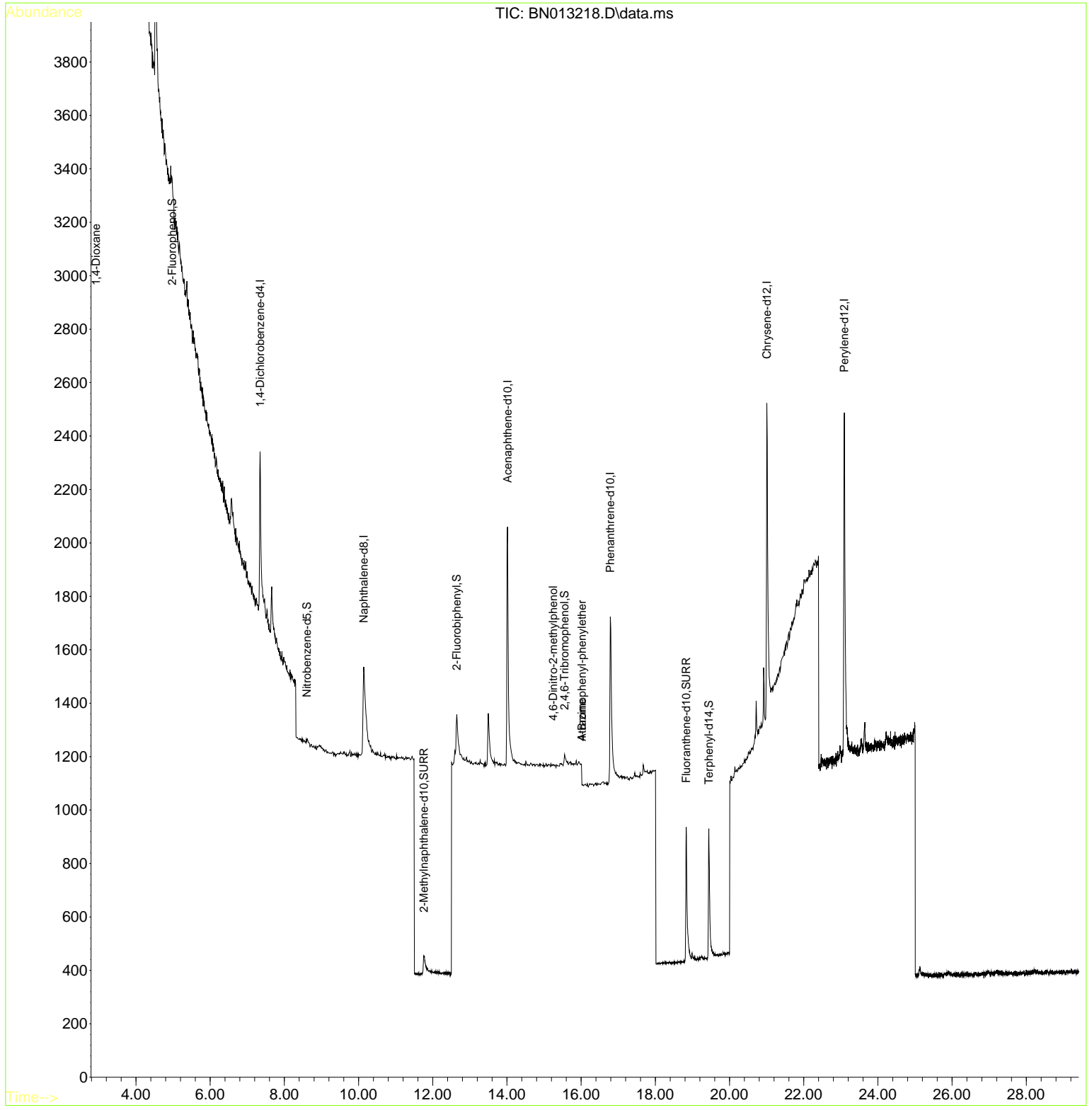
Compound	R.T.	QIon	Response	Conc	Units	Dev(Min)	
Internal Standards							
1) 1,4-Dichlorobenzene-d4	7.346	152	559	0.40	ng	0.00	
7) Naphthalene-d8	10.137	136	1237	0.40	ng	# 0.03	
13) Acenaphthene-d10	14.016	164	906	0.40	ng	0.01	
19) Phenanthrene-d10	16.788	188	2047	0.40	ng	# 0.01	
29) Chrysene-d12	21.006	240	2133	0.40	ng	# 0.00	
36) Perylene-d12	23.092	264	2336	0.40	ng	# 0.00	
System Monitoring Compounds							
4) 2-Fluorophenol	4.978	112	95	0.04	ng	0.02	
5) Phenol-d6	6.557	99	38	0.02	ng	0.00	
8) Nitrobenzene-d5	8.604	82	70	0.05	ng	0.08	
11) 2-Methylnaphthalene-d10	11.764	152	259	0.12	ng	0.04	
14) 2,4,6-Tribromophenol	15.551	330	62	0.11	ng	0.01	
15) 2-Fluorobiphenyl	12.646	172	391	0.10	ng	0.01	
27) Fluoranthene-d10	18.831	212	1104	0.16	ng	0.00	
31) Terphenyl-d14	19.442	244	953	0.18	ng	0.00	
Target Compounds							
2) 1,4-Dioxane	2.925	88	2863	2.94	ng	96	Qvalue
20) 4,6-Dinitro-2-methylph...	15.247	198	1	0.19	ng	# 1	
21) 4-Bromophenyl-phenylether	16.021	248	34	0.08	ng	# 78	
23) Atrazine	16.021	200	168	0.14	ng	# 3	
34) Bis(2-ethylhexyl)phtha...	20.921	149	213	Below Cal		# 93	

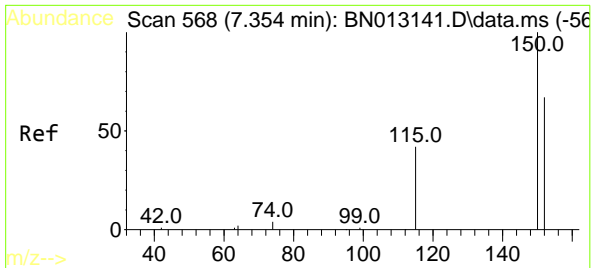
(#) = qualifier out of range (m) = manual integration (+) = signals summed

Data Path : Z:\svoasrv\HPCHEM1\BNA_N\Data\BN121820\
 Data File : BN013218.D
 Acq On : 18 Dec 2020 20:54
 Operator : CG/JU
 Sample : L5053-10DL 2X
 Misc :
 ALS Vial : 10 Sample Multiplier: 1

Instrument :
 BNA_N
ClientSampleId :
 RE125D2-20201210DL

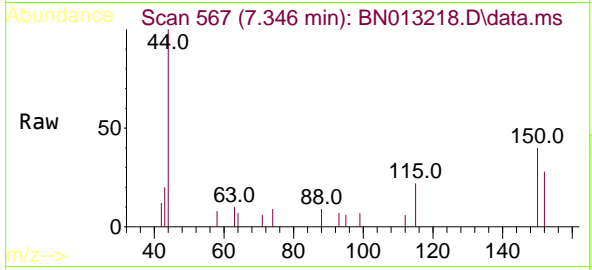
Quant Time: Dec 19 01:11:59 2020
 Quant Method : Z:\SVOASRV\HPCHEM1\BNA_N\METHODS\8270-SIM-BN121620.M
 Quant Title : ASP BNA STANDARDS FOR 5 POINT CALIBRATION
 QLast Update : Fri Dec 18 16:11:20 2020
 Response via : Initial Calibration



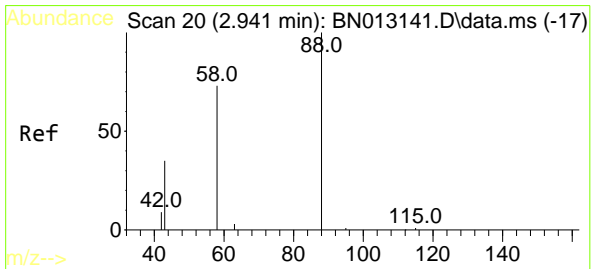
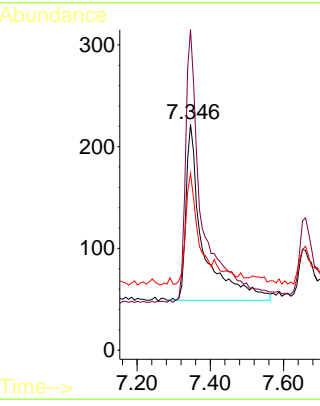
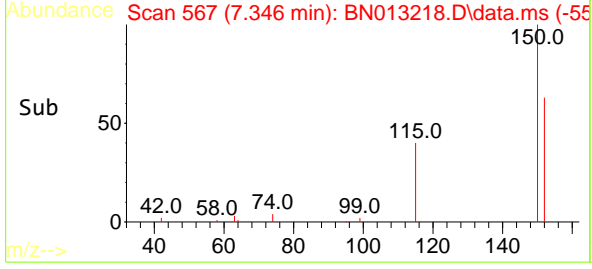


#1
 1,4-Dichlorobenzene-d4
 Concen: 0.40 ng
 RT: 7.346 min Scan# 567
 Delta R.T. -0.000 min
 Lab File: BN013218.D
 Acq: 18 Dec 2020 20:54

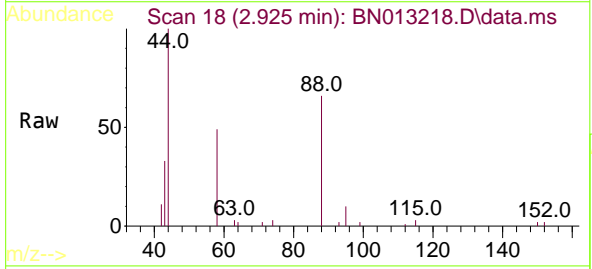
Instrument :
 BNA_N
ClientSampled :
 RE125D2-20201210DL



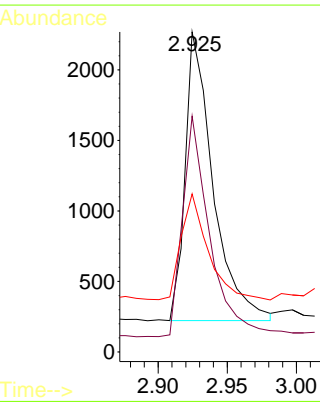
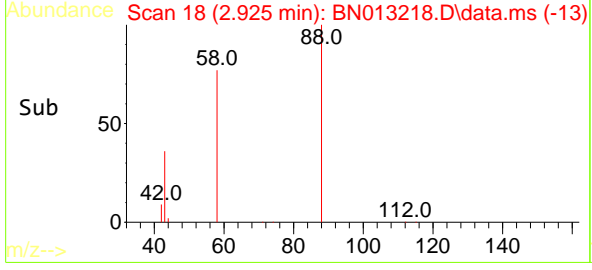
Tgt Ion:152 Resp: 559
 Ion Ratio Lower Upper
 152 100
 150 141.9 116.6 174.8
 115 78.4 52.9 79.3

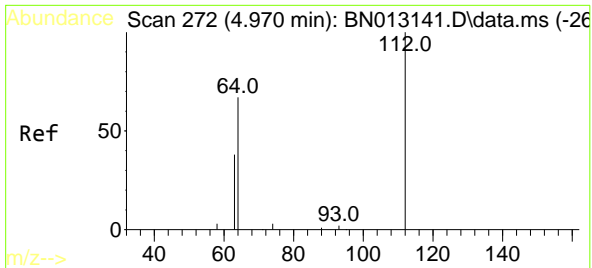


#2
 1,4-Dioxane
 Concen: 2.94 ng
 RT: 2.925 min Scan# 18
 Delta R.T. -0.008 min
 Lab File: BN013218.D
 Acq: 18 Dec 2020 20:54



Tgt Ion: 88 Resp: 2863
 Ion Ratio Lower Upper
 88 100
 58 76.3 59.4 89.2
 43 35.5 32.3 48.5



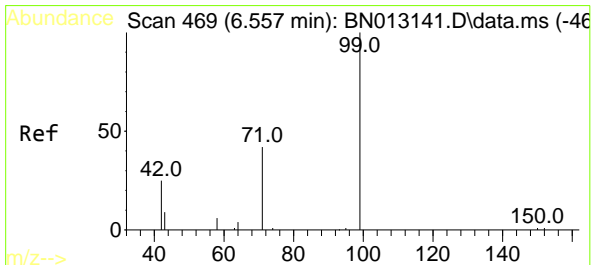
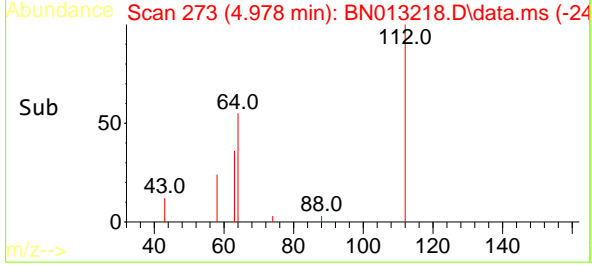
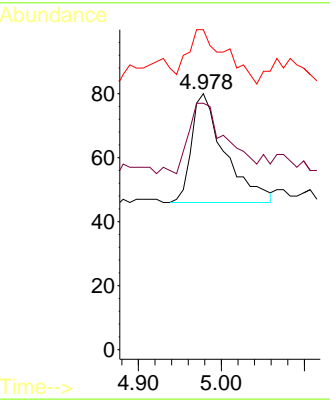
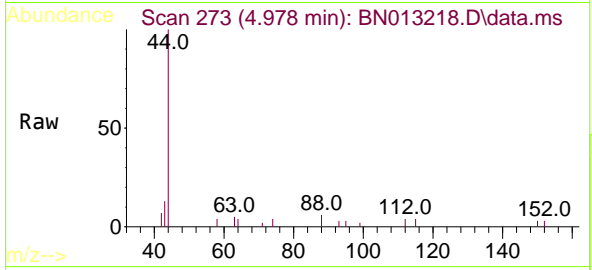


#4
 2-Fluorophenol
 Concen: 0.04 ng
 RT: 4.978 min Scan# 273
 Delta R.T. 0.016 min
 Lab File: BN013218.D
 Acq: 18 Dec 2020 20:54

Instrument :
 BNA_N
 ClientSampleId :
 RE125D2-20201210DL

Tgt Ion:112 Resp: 95

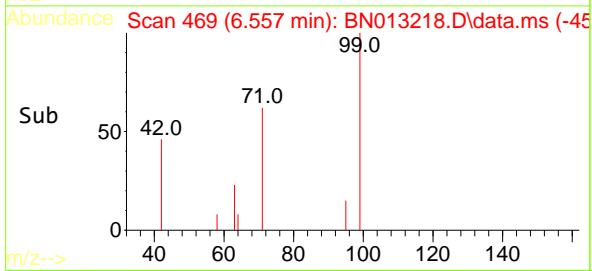
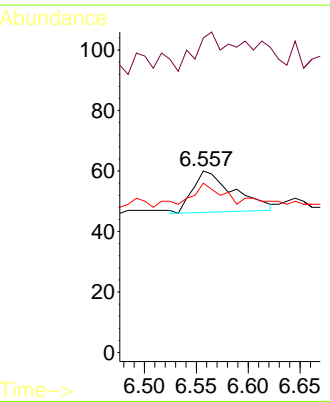
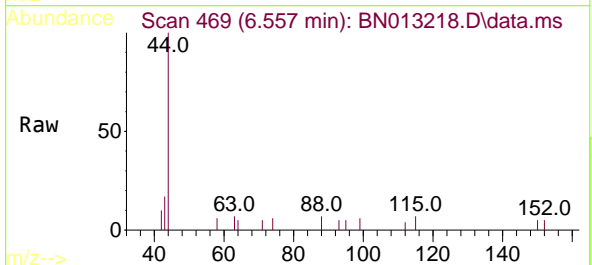
Ion	Ratio	Lower	Upper
112	100		
64	68.4	49.5	74.3
63	55.8	32.0	48.0

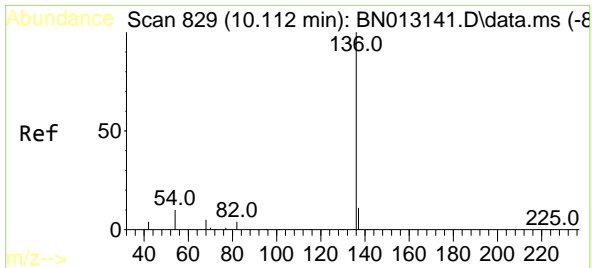


#5
 Phenol-d6
 Concen: 0.02 ng
 RT: 6.557 min Scan# 469
 Delta R.T. 0.008 min
 Lab File: BN013218.D
 Acq: 18 Dec 2020 20:54

Tgt Ion: 99 Resp: 38

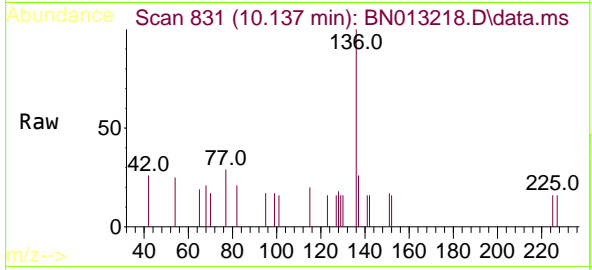
Ion	Ratio	Lower	Upper
99	100		
42	76.3	22.4	33.6
71	44.7	37.8	56.6





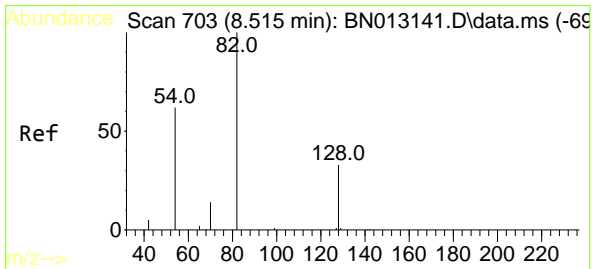
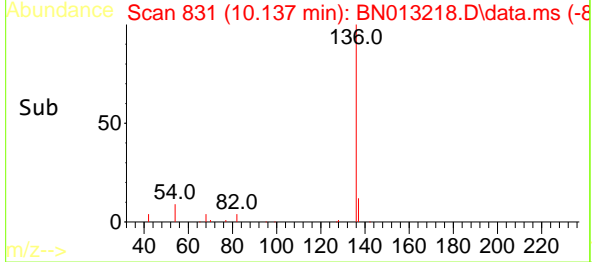
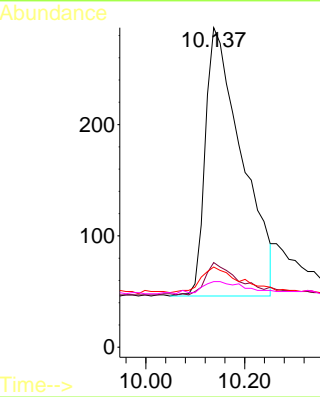
#7
 Naphthalene-d8
 Concen: 0.40 ng
 RT: 10.137 min Scan# 831
 Delta R.T. 0.025 min
 Lab File: BN013218.D
 Acq: 18 Dec 2020 20:54

Instrument :
 BNA_N
ClientSampleId :
 RE125D2-20201210DL

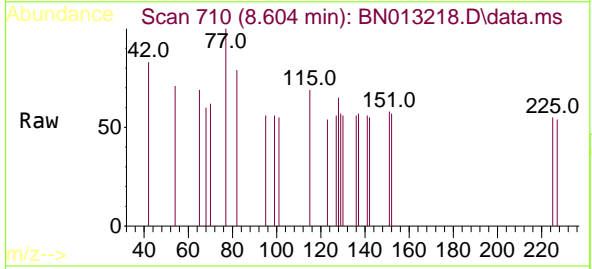


Tgt Ion: 136 Resp: 1237

Ion	Ratio	Lower	Upper
136	100		
137	26.5	10.6	15.8#
54	25.1	8.6	12.8#
68	20.6	5.7	8.5#

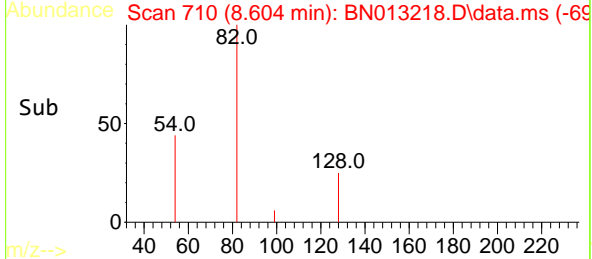
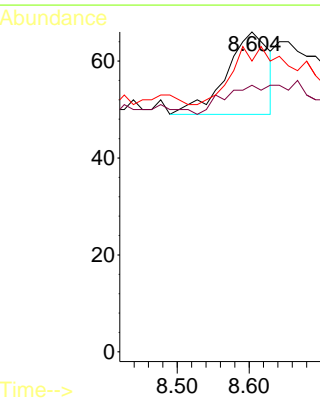


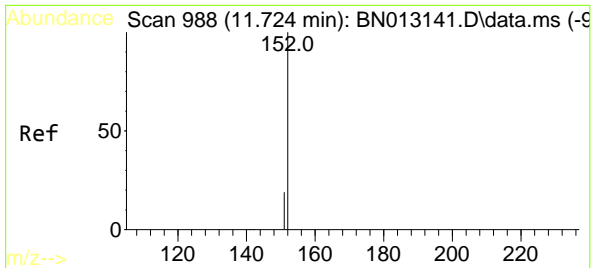
#8
 Nitrobenzene-d5
 Concen: 0.05 ng
 RT: 8.604 min Scan# 710
 Delta R.T. 0.076 min
 Lab File: BN013218.D
 Acq: 18 Dec 2020 20:54



Tgt Ion: 82 Resp: 70

Ion	Ratio	Lower	Upper
82	100		
128	83.3	30.6	46.0#
54	90.9	48.3	72.5#

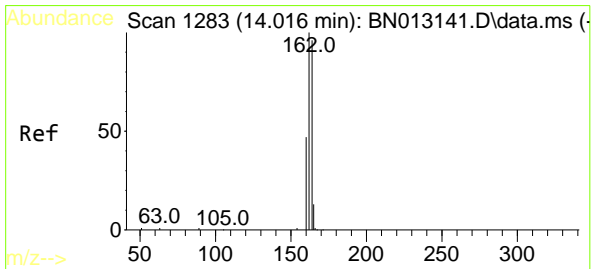
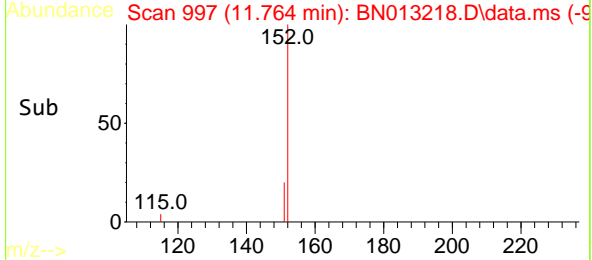
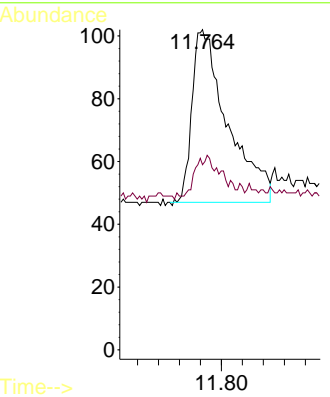
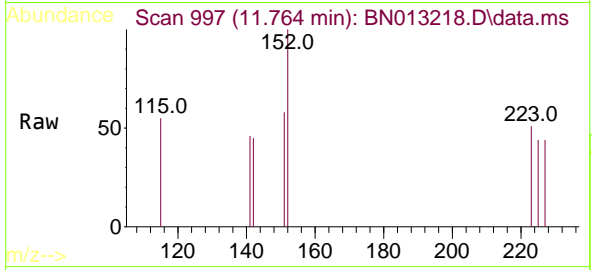




#11
 2-Methylnaphthalene-d10
 Concen: 0.12 ng
 RT: 11.764 min Scan# 997
 Delta R.T. 0.040 min
 Lab File: BN013218.D
 Acq: 18 Dec 2020 20:54

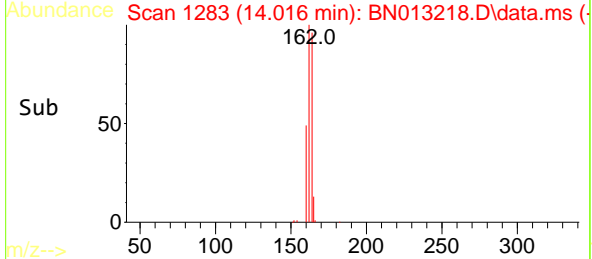
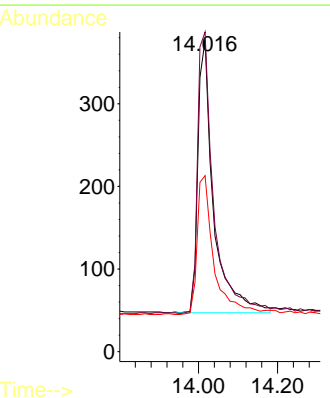
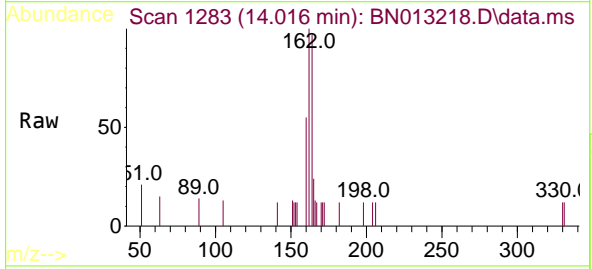
Instrument :
 BNA_N
 ClientSampleId :
 RE125D2-20201210DL

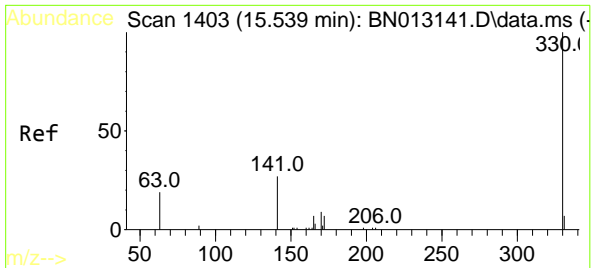
Tgt Ion:152 Resp: 259
 Ion Ratio Lower Upper
 152 100
 151 5.4 16.7 25.1#



#13
 Acenaphthene-d10
 Concen: 0.40 ng
 RT: 14.016 min Scan# 1283
 Delta R.T. 0.013 min
 Lab File: BN013218.D
 Acq: 18 Dec 2020 20:54

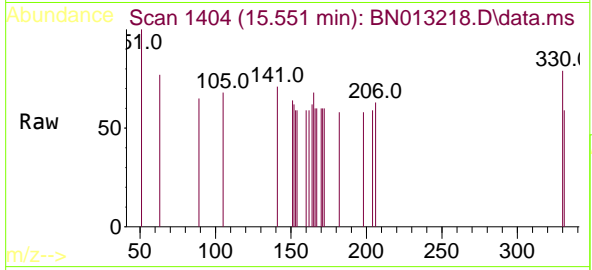
Tgt Ion:164 Resp: 906
 Ion Ratio Lower Upper
 164 100
 162 102.7 80.6 120.8
 160 56.5 39.5 59.3



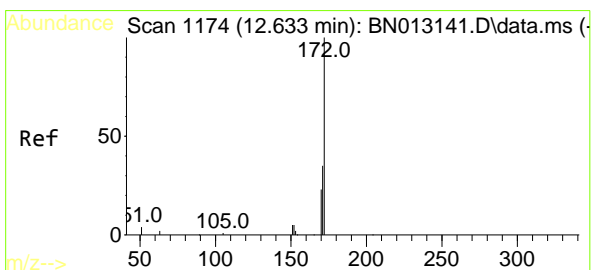
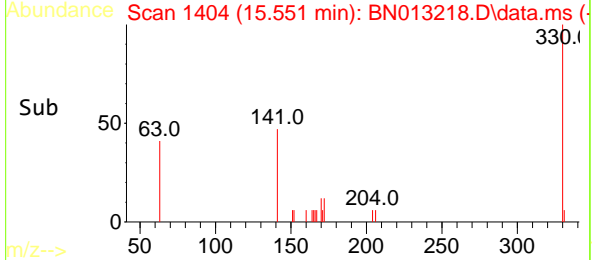
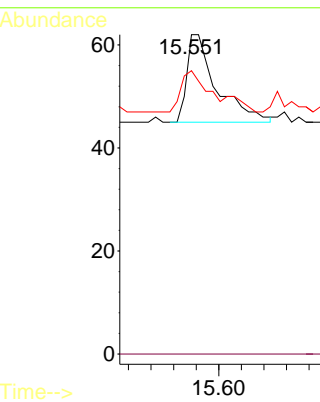


#14
 2,4,6-Tribromophenol
 Concen: 0.11 ng
 RT: 15.551 min Scan# 1404
 Delta R.T. 0.013 min
 Lab File: BN013218.D
 Acq: 18 Dec 2020 20:54

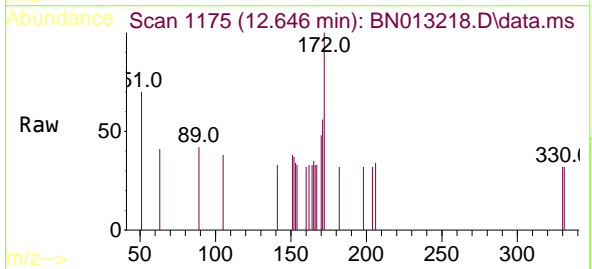
Instrument :
 BNA_N
ClientSampleId :
 RE125D2-20201210DL



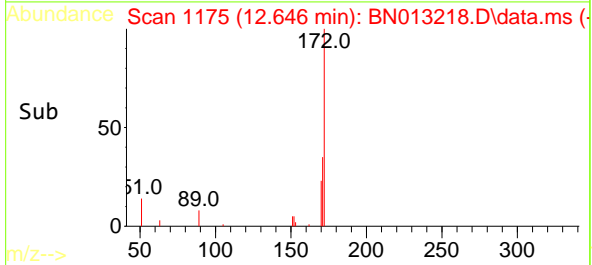
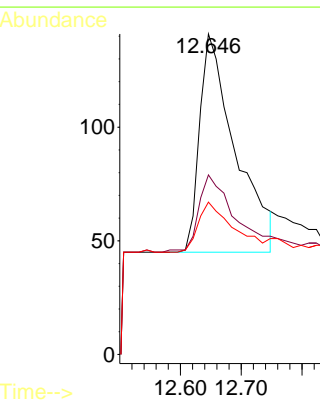
Tgt Ion:330 Resp: 62
 Ion Ratio Lower Upper
 330 100
 332 0.0 0.0 0.0
 141 51.6 34.4 51.6#

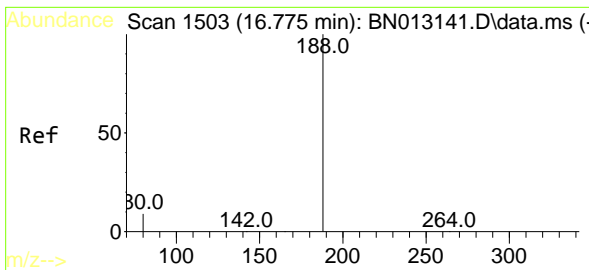


#15
 2-Fluorobiphenyl
 Concen: 0.10 ng
 RT: 12.646 min Scan# 1175
 Delta R.T. 0.013 min
 Lab File: BN013218.D
 Acq: 18 Dec 2020 20:54



Tgt Ion:172 Resp: 391
 Ion Ratio Lower Upper
 172 100
 171 56.0 28.2 42.4#
 170 47.5 20.0 30.0#



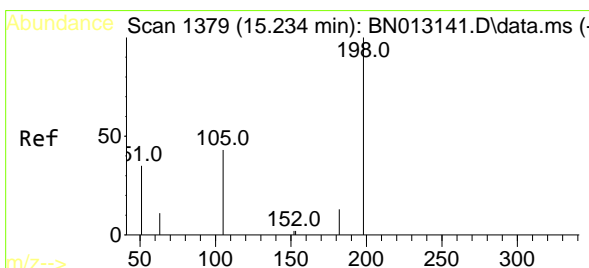
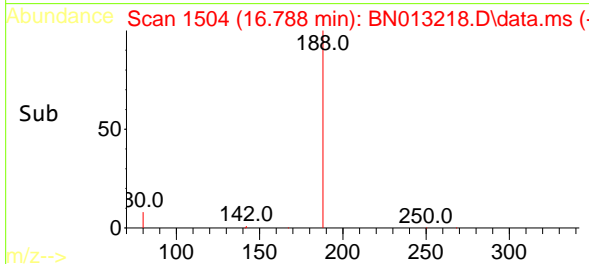
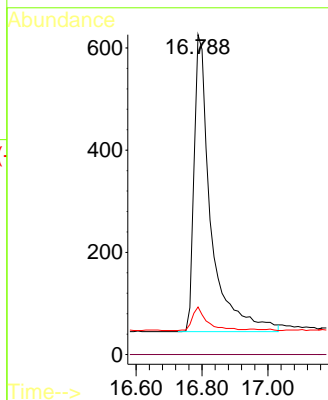
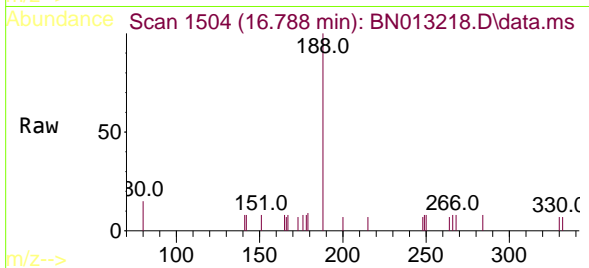


#19
 Phenanthrene-d10
 Concen: 0.40 ng
 RT: 16.788 min Scan# 1504
 Delta R.T. 0.012 min
 Lab File: BN013218.D
 Acq: 18 Dec 2020 20:54

Instrument :
 BNA_N
 ClientSampleId :
 RE125D2-20201210DL

Tgt Ion:188 Resp: 2047

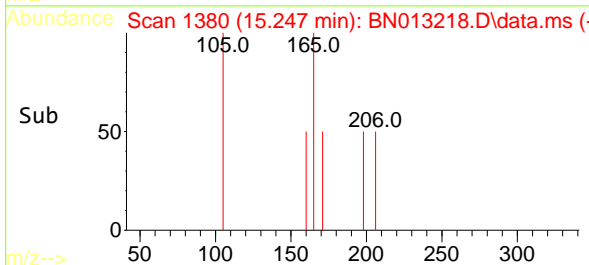
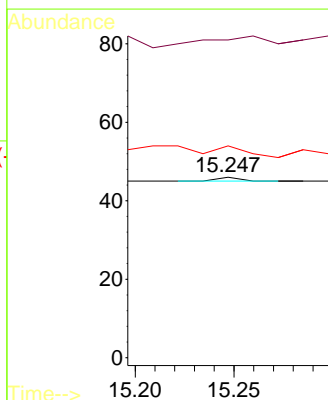
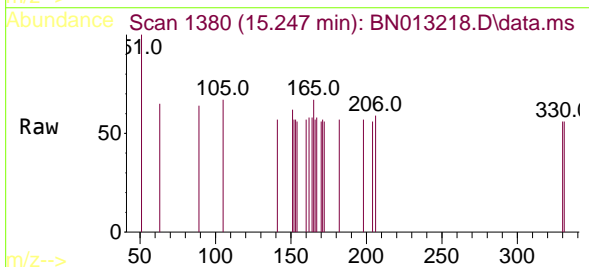
Ion	Ratio	Lower	Upper
188	100		
94	0.0	0.0	0.0
80	14.9	5.0	7.4#

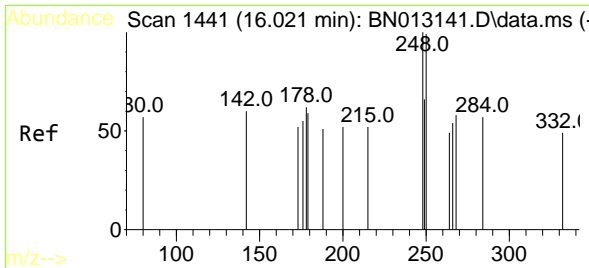


#20
 4,6-Dinitro-2-methylphenol
 Concen: 0.19 ng
 RT: 15.247 min Scan# 1380
 Delta R.T. -0.013 min
 Lab File: BN013218.D
 Acq: 18 Dec 2020 20:54

Tgt Ion:198 Resp: 1

Ion	Ratio	Lower	Upper
198	100		
51	176.1	43.5	65.3#
105	117.4	27.2	40.8#

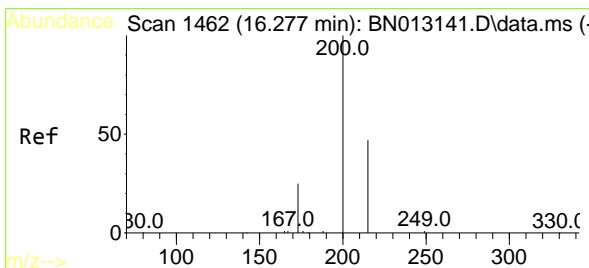
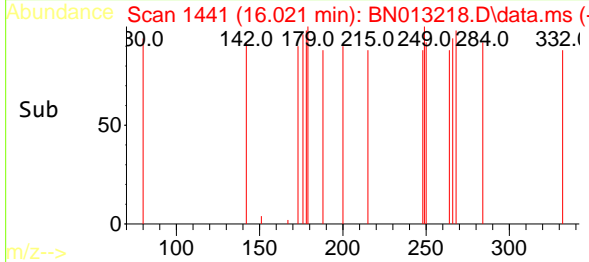
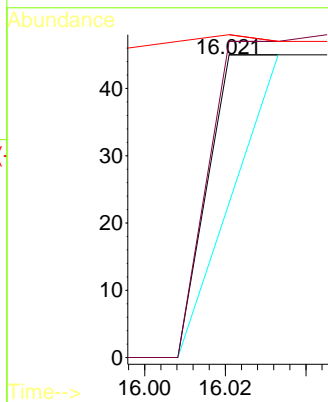
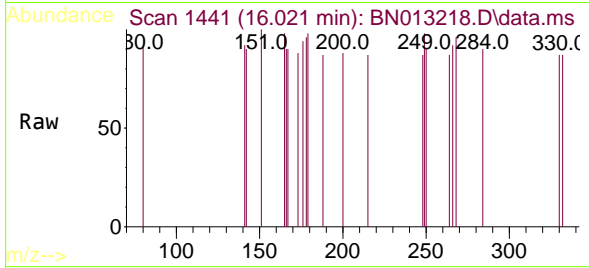




#21
 4-Bromophenyl-phenylether
 Concen: 0.08 ng
 RT: 16.021 min Scan# 1441
 Delta R.T. 0.000 min
 Lab File: BN013218.D
 Acq: 18 Dec 2020 20:54

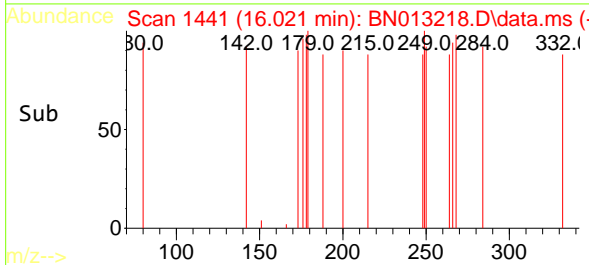
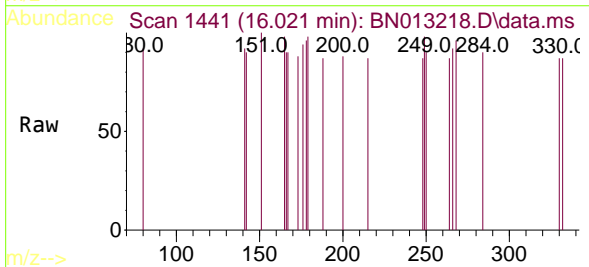
Instrument :
 BNA_N
 ClientSampled :
 RE125D2-20201210DL

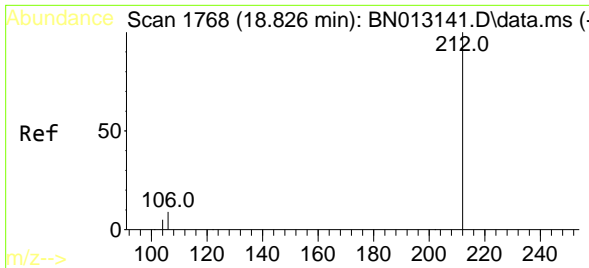
Tgt Ion:248 Resp: 34
 Ion Ratio Lower Upper
 248 100
 250 104.4 77.3 115.9
 141 106.7 57.8 86.8#



#23
 Atrazine
 Concen: 0.14 ng
 RT: 16.021 min Scan# 1441
 Delta R.T. -0.256 min
 Lab File: BN013218.D
 Acq: 18 Dec 2020 20:54

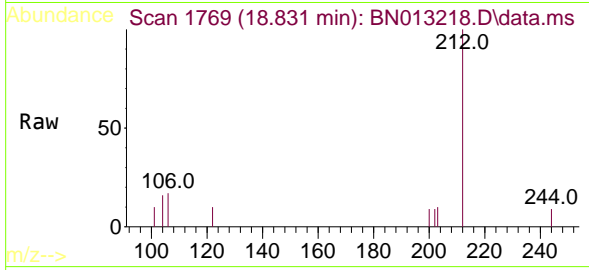
Tgt Ion:200 Resp: 168
 Ion Ratio Lower Upper
 200 100
 173 100.0 22.8 34.2#
 215 97.8 38.1 57.1#



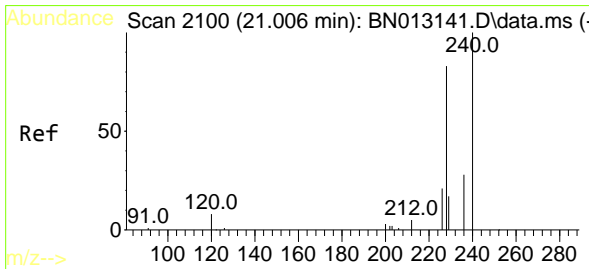
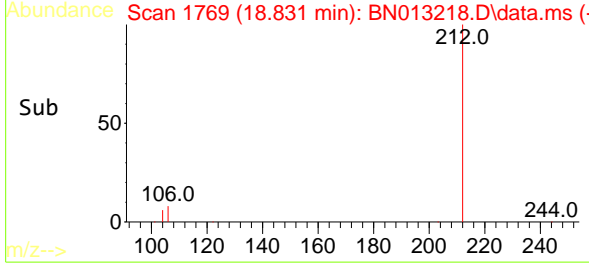
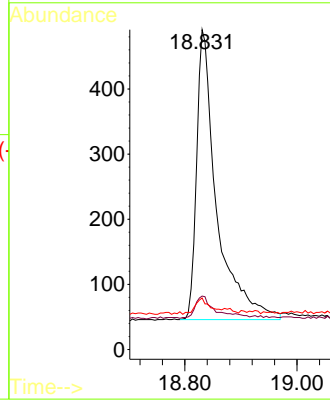


#27
 Fluoranthene-d10
 Concen: 0.16 ng
 RT: 18.831 min Scan# 1769
 Delta R.T. 0.010 min
 Lab File: BN013218.D
 Acq: 18 Dec 2020 20:54

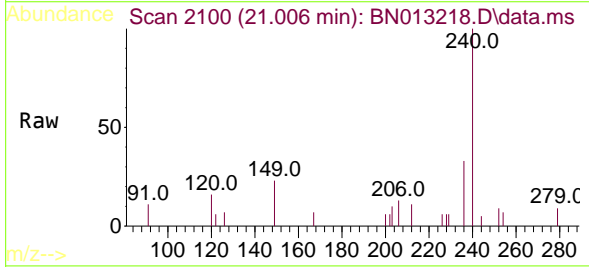
Instrument :
 BNA_N
 ClientSampleId :
 RE125D2-20201210DL



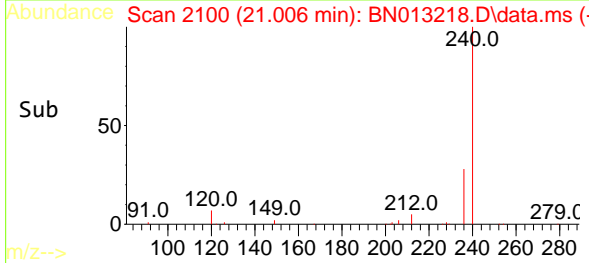
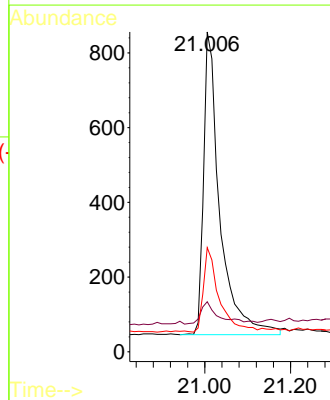
Tgt Ion:212 Resp: 1104
 Ion Ratio Lower Upper
 212 100
 106 7.6 6.8 10.2
 104 4.3 4.1 6.1

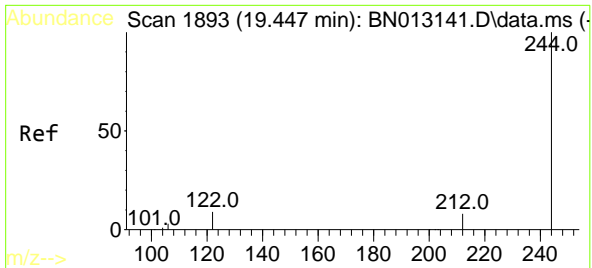


#29
 Chrysene-d12
 Concen: 0.40 ng
 RT: 21.006 min Scan# 2100
 Delta R.T. 0.000 min
 Lab File: BN013218.D
 Acq: 18 Dec 2020 20:54



Tgt Ion:240 Resp: 2133
 Ion Ratio Lower Upper
 240 100
 120 15.7 5.3 7.9#
 236 32.6 21.8 32.8



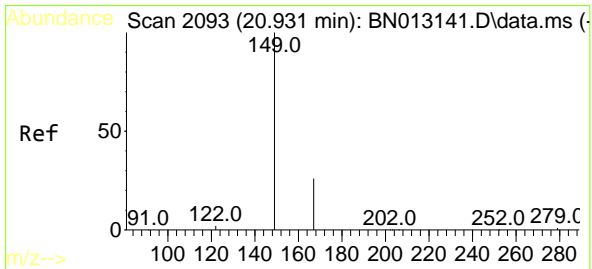
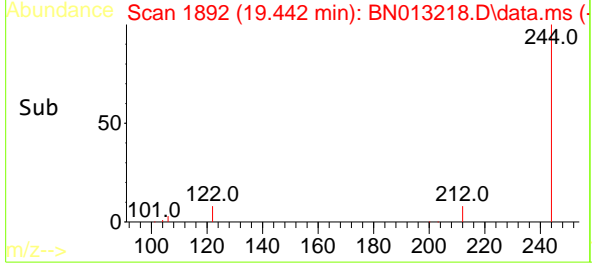
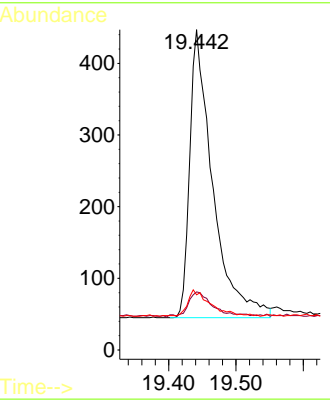
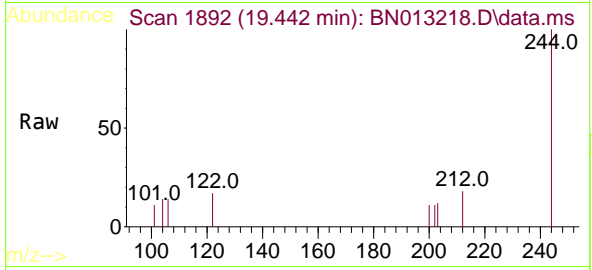


#31
 Terphenyl-d14
 Concen: 0.18 ng
 RT: 19.442 min Scan# 1892
 Delta R.T. -0.005 min
 Lab File: BN013218.D
 Acq: 18 Dec 2020 20:54

Instrument :
 BNA_N
ClientSampleId :
 RE125D2-20201210DL

Tgt Ion:244 Resp: 953

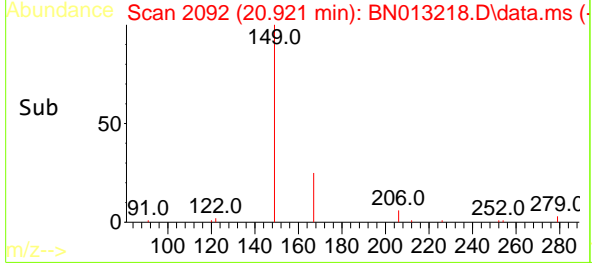
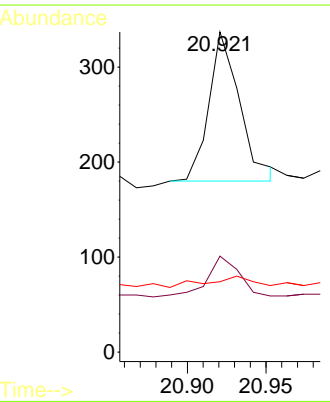
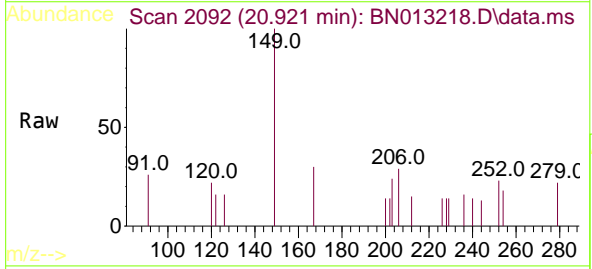
Ion	Ratio	Lower	Upper
244	100		
212	18.1	7.3	10.9#
122	17.2	7.3	10.9#

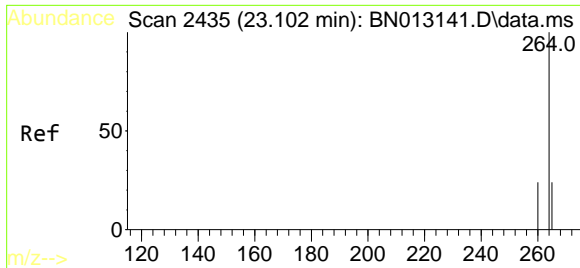


#34
 Bis(2-ethylhexyl)phthalate
 Concen: Below Cal
 RT: 20.921 min Scan# 2092
 Delta R.T. -0.000 min
 Lab File: BN013218.D
 Acq: 18 Dec 2020 20:54

Tgt Ion:149 Resp: 213

Ion	Ratio	Lower	Upper
149	100		
167	26.3	23.2	34.8
279	11.3	3.9	5.9#





#36
 Perylene-d12
 Concen: 0.40 ng
 RT: 23.092 min Scan# 2432
 Delta R.T. -0.003 min
 Lab File: BN013218.D
 Acq: 18 Dec 2020 20:54

Instrument :
 BNA_N
ClientSampled :
 RE125D2-20201210DL

Tgt Ion:264 Resp: 2336

Ion	Ratio	Lower	Upper
264	100		
260	27.6	19.8	29.6
265	88.5	51.4	77.0#

