

Data Path : Z:\svoasrv\HPCHEM1\BNA\_N\Data\BN122221\  
 Data File : BN018152.D  
 Acq On : 22 Dec 2021 15:59  
 Operator : CG/JU  
 Sample : PB141450BS  
 Misc :  
 ALS Vial : 12 Sample Multiplier: 1

Instrument :  
 BNA\_N  
 ClientSampleId :  
 SLCS450

Quant Time: Dec 22 23:51:35 2021  
 Quant Method : Z:\SVOASRV\HPCHEM1\BNA\_N\METHODS\SFAM-EPA-SIM-BN122121.M  
 Quant Title : ASP BNA STANDARDS FOR 5 POINT CALIBRATION  
 QLast Update : Wed Dec 22 14:08:04 2021  
 Response via : Initial Calibration

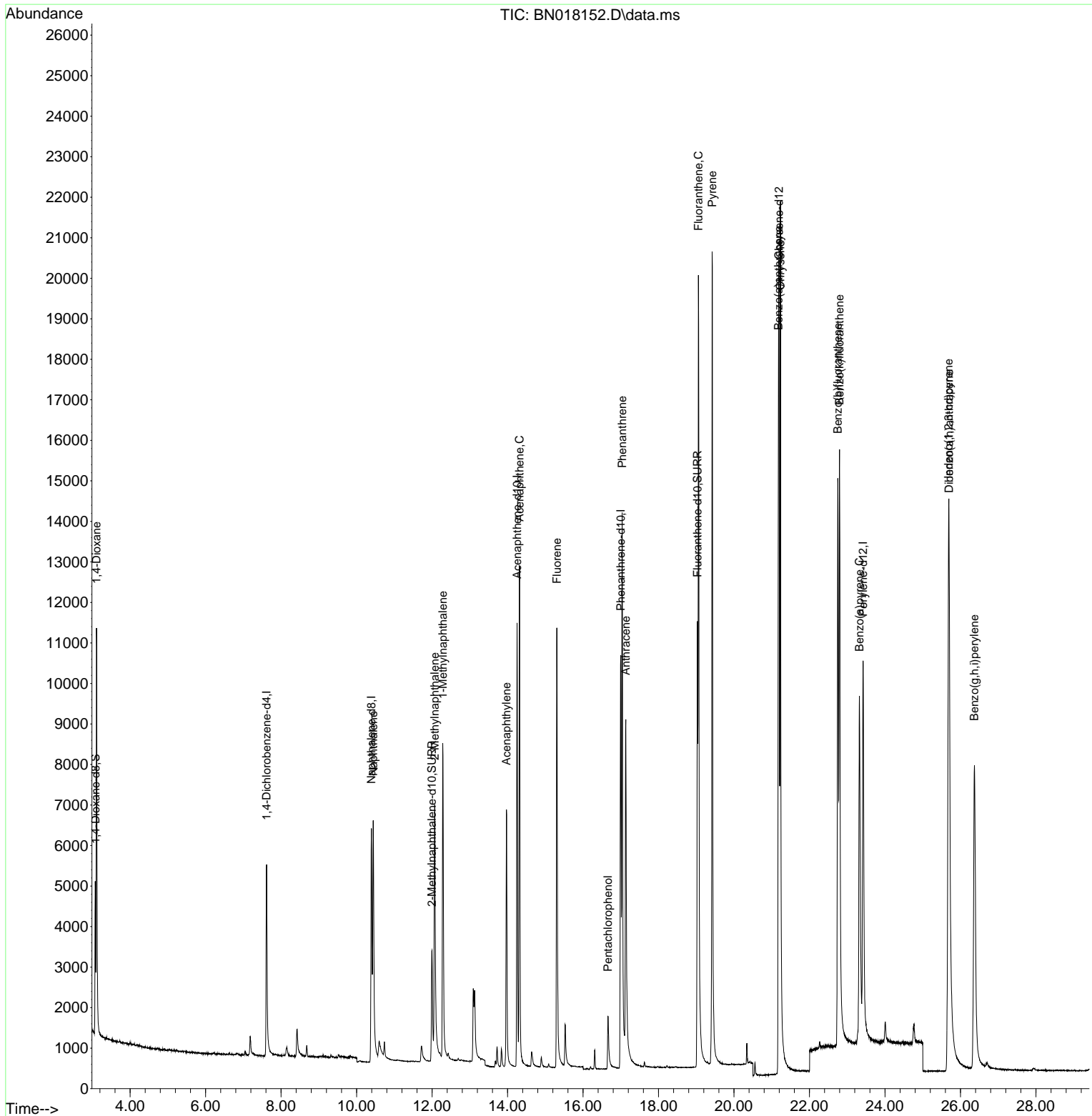
Compound	R.T.	QIon	Response	Conc	Units	Dev(Min)
Internal Standards						
1) 1,4-Dichlorobenzene-d4	7.616	152	3226	0.400	ng/ul	0.00
4) Naphthalene-d8	10.393	136	10141	0.400	ng/ul	0.00
9) Acenaphthene-d10	14.253	164	6462	0.400	ng/ul	0.00
13) Phenanthrene-d10	16.998	188	14240	0.400	ng/ul	0.00
17) Chrysene-d12	21.193	240	14447	0.400	ng/ul	0.00
23) Perylene-d12	23.420	264	13916	0.400	ng/ul	0.00
System Monitoring Compounds						
3) 1,4-Dioxane-d8	3.080	96	2428	0.728	ng/ul	0.00
6) 2-Methylnaphthalene-d10	11.993	152	4971	0.356	ng/ul	0.00
18) Fluoranthene-d10	19.031	212	14688	0.375	ng/ul	0.00
Target Compounds						
						Qvalue
2) 1,4-Dioxane	3.109	88	6685	1.658	ng/ul#	88
5) Naphthalene	10.442	128	10163	0.353	ng/ul	100
7) 2-Methylnaphthalene	12.070	142	6230	0.336	ng/ul	100
8) 1-Methylnaphthalene	12.284	142	6483	0.337	ng/ul	100
10) Acenaphthylene	13.971	152	8535	0.334	ng/ul	99
11) Acenaphthene	14.318	153	7630	0.339	ng/ul	99
12) Fluorene	15.308	166	8640	0.331	ng/ul	97
14) Pentachlorophenol	16.661	266	1350	0.505	ng/ul	98
15) Phenanthrene	17.036	178	16031	0.345	ng/ul	99
16) Anthracene	17.133	178	12607	0.335	ng/ul	100
19) Fluoranthene	19.058	202	19838	0.358	ng/ul	99
20) Pyrene	19.421	202	20774	0.358	ng/ul	97
21) Benzo(a)anthracene	21.179	228	15425	0.321	ng/ul	99
22) Chrysene	21.228	228	21827	0.371	ng/ul	99
24) Benzo(b)fluoranthene	22.751	252	19254	0.361	ng/ul	99
25) Benzo(k)fluoranthene	22.794	252	24244	0.365	ng/ul	99
26) Benzo(a)pyrene	23.324	252	17498	0.347	ng/ul	98
27) Indeno(1,2,3-cd)pyrene	25.686	276	23277	0.350	ng/ul#	99
28) Dibenzo(a,h)anthracene	25.699	278	17493	0.347	ng/ul	99
29) Benzo(g,h,i)perylene	26.370	276	19695	0.359	ng/ul	99

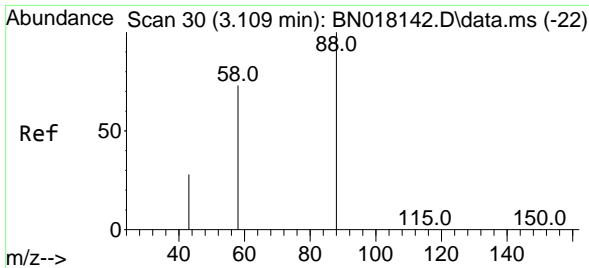
(#) = qualifier out of range (m) = manual integration (+) = signals summed

Data Path : Z:\svoasrv\HPCHEM1\BNA\_N\Data\BN122221\  
 Data File : BN018152.D  
 Acq On : 22 Dec 2021 15:59  
 Operator : CG/JU  
 Sample : PB141450BS  
 Misc :  
 ALS Vial : 12 Sample Multiplier: 1

Instrument :  
 BNA\_N  
 ClientSampleId :  
 SLCS450

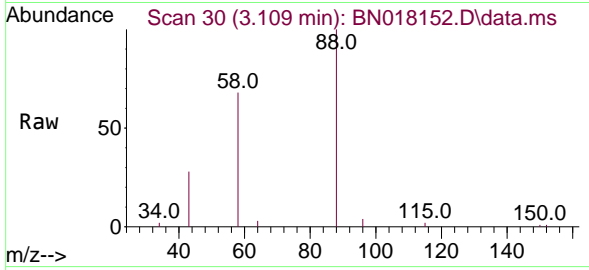
Quant Time: Dec 22 23:51:35 2021  
 Quant Method : Z:\SVOASRV\HPCHEM1\BNA\_N\METHODS\SFAM-EPA-SIM-BN122121.M  
 Quant Title : ASP BNA STANDARDS FOR 5 POINT CALIBRATION  
 QLast Update : Wed Dec 22 14:08:04 2021  
 Response via : Initial Calibration





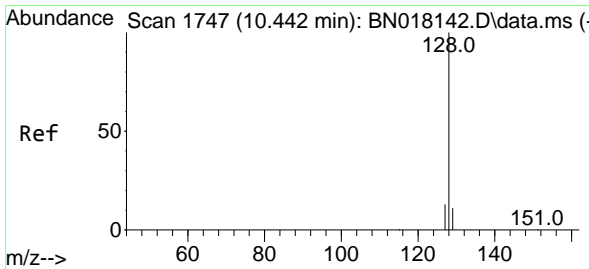
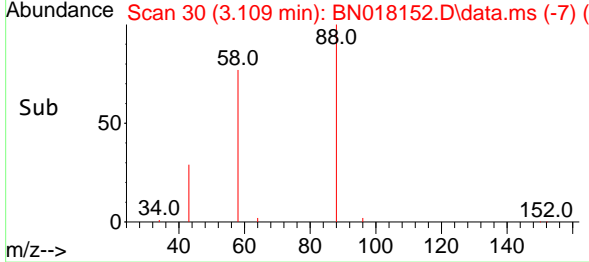
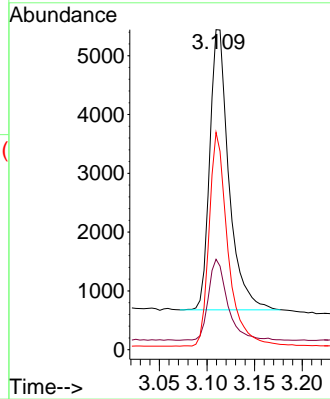
#2  
 1,4-Dioxane  
 Concen: 1.658 ng/u1  
 RT: 3.109 min Scan# 30  
 Delta R.T. -0.004 min  
 Lab File: BN018152.D  
 Acq: 22 Dec 2021 15:59

Instrument :  
 BNA\_N  
 ClientSampleId :  
 SLCS450



Tgt Ion: 88 Resp: 6685

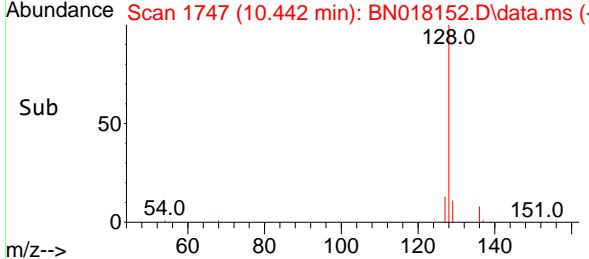
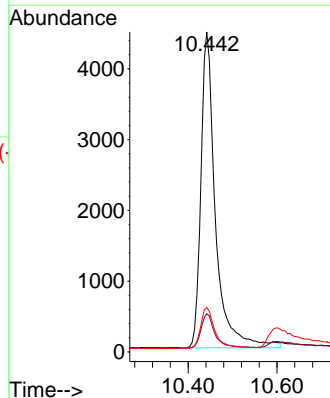
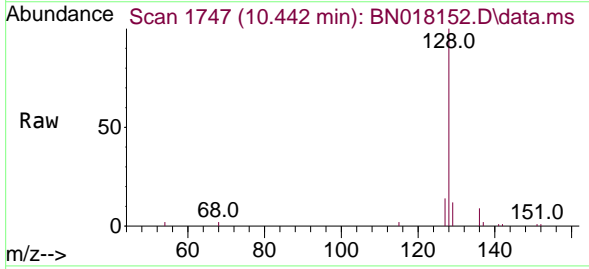
Ion	Ratio	Lower	Upper
88	100		
43	28.3	24.6	36.8
58	67.9	45.2	67.8

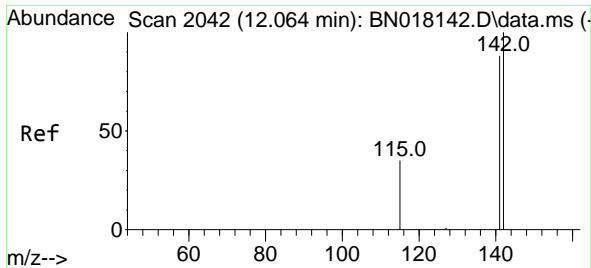


#5  
 Naphthalene  
 Concen: 0.353 ng/u1  
 RT: 10.442 min Scan# 1747  
 Delta R.T. 0.004 min  
 Lab File: BN018152.D  
 Acq: 22 Dec 2021 15:59

Tgt Ion: 128 Resp: 10163

Ion	Ratio	Lower	Upper
128	100		
129	12.0	9.3	13.9
127	13.9	11.1	16.7

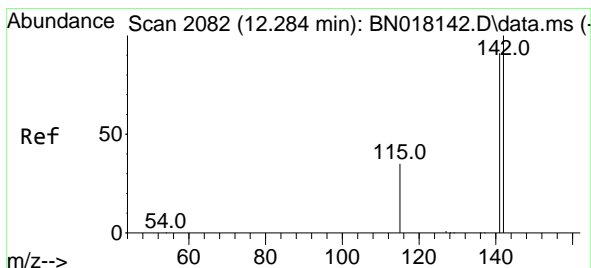
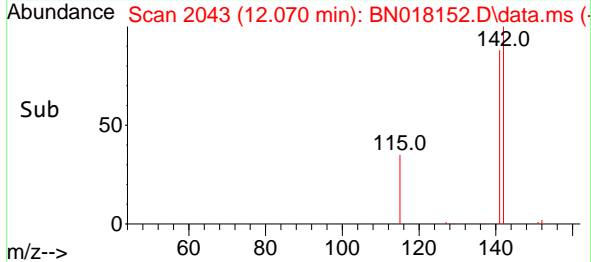
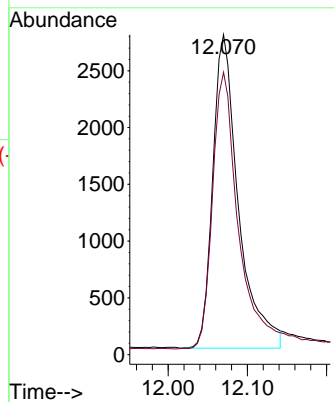
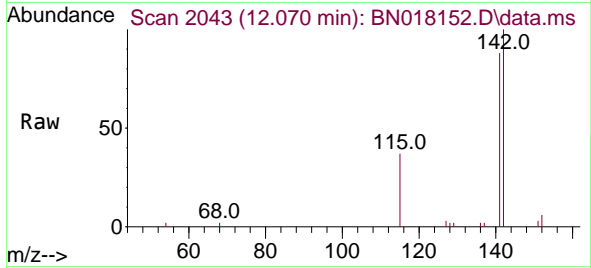




#7  
 2-Methylnaphthalene  
 Concen: 0.336 ng/ul  
 RT: 12.070 min Scan# 2043  
 Delta R.T. 0.004 min  
 Lab File: BN018152.D  
 Acq: 22 Dec 2021 15:59

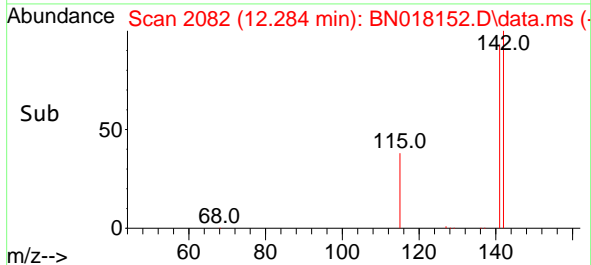
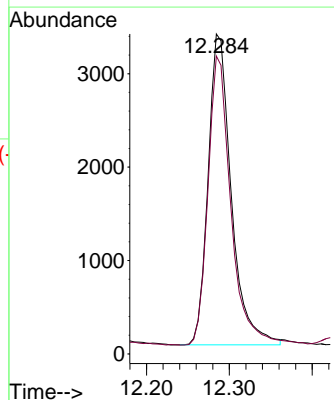
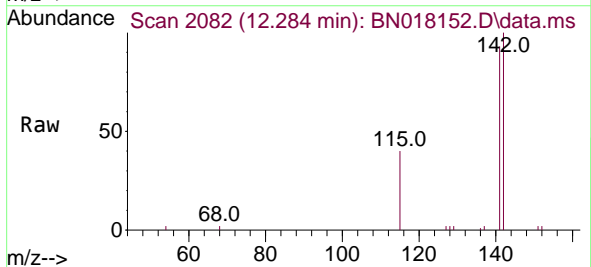
Instrument :  
 BNA\_N  
 ClientSampleId :  
 SLCS450

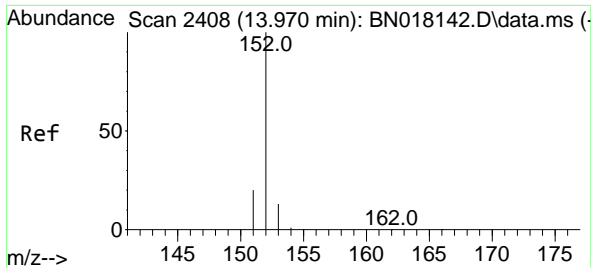
Tgt Ion:142 Resp: 6230  
 Ion Ratio Lower Upper  
 142 100  
 141 88.6 70.6 105.8



#8  
 1-Methylnaphthalene  
 Concen: 0.337 ng/ul  
 RT: 12.284 min Scan# 2082  
 Delta R.T. -0.001 min  
 Lab File: BN018152.D  
 Acq: 22 Dec 2021 15:59

Tgt Ion:142 Resp: 6483  
 Ion Ratio Lower Upper  
 142 100  
 141 91.4 73.2 109.8

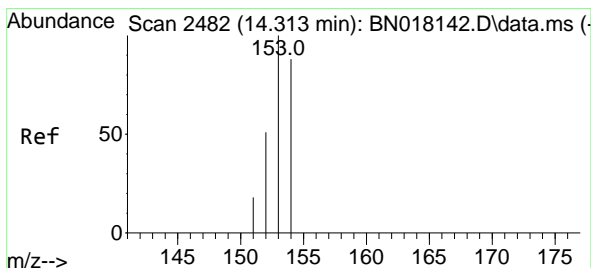
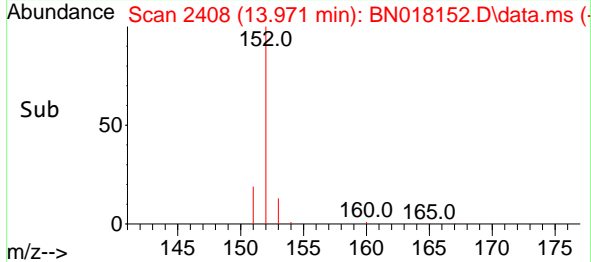
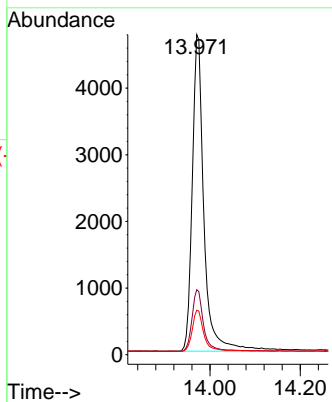
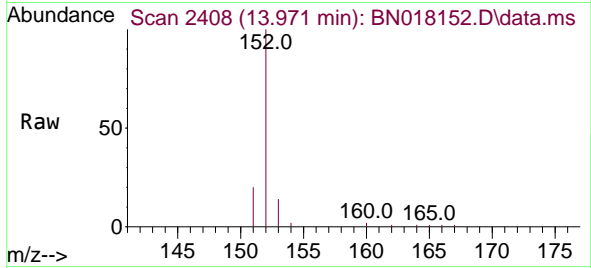




#10  
 Acenaphthylene  
 Concen: 0.334 ng/u1  
 RT: 13.971 min Scan# 2408  
 Delta R.T. -0.001 min  
 Lab File: BN018152.D  
 Acq: 22 Dec 2021 15:59

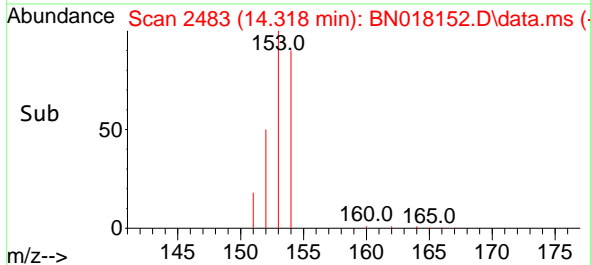
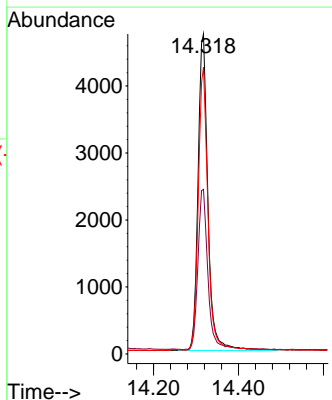
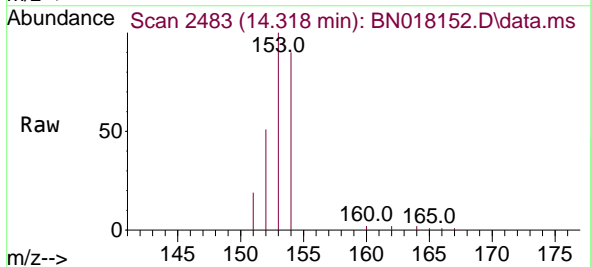
Instrument :  
 BNA\_N  
 ClientSampleId :  
 SLCS450

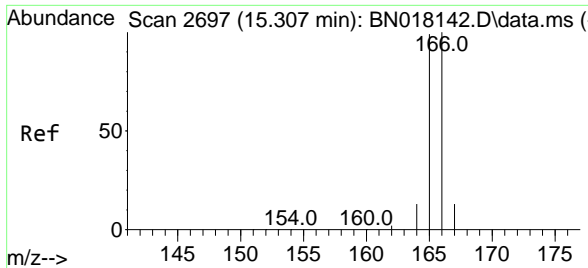
Tgt Ion	Resp	Lower	Upper
152	8535		
151	20.3	16.0	24.0
153	13.9	11.0	16.4



#11  
 Acenaphthene  
 Concen: 0.339 ng/u1  
 RT: 14.318 min Scan# 2483  
 Delta R.T. 0.003 min  
 Lab File: BN018152.D  
 Acq: 22 Dec 2021 15:59

Tgt Ion	Resp	Lower	Upper
153	7630		
152	51.4	40.8	61.2
154	89.6	70.3	105.5

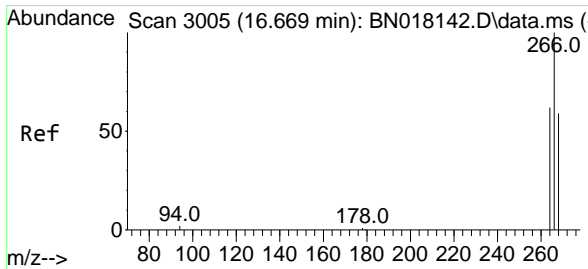
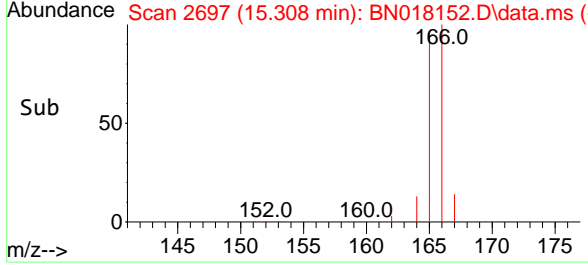
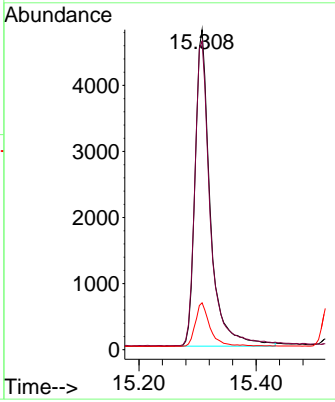
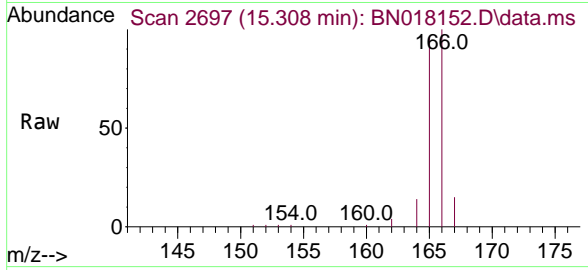




#12  
 Fluorene  
 Concen: 0.331 ng/u1  
 RT: 15.308 min Scan# 20  
 Delta R.T. 0.003 min  
 Lab File: BN018152.D  
 Acq: 22 Dec 2021 15:59

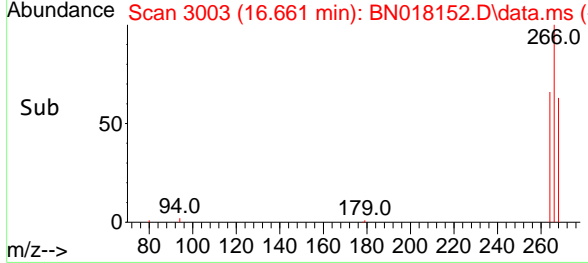
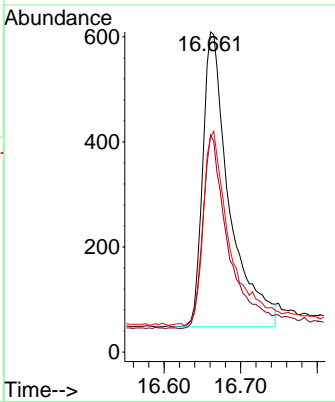
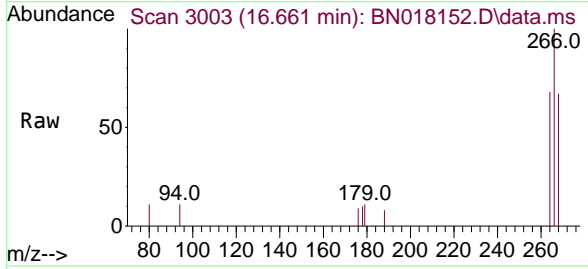
Instrument : BNA\_N  
 ClientSampleId : SLCS450

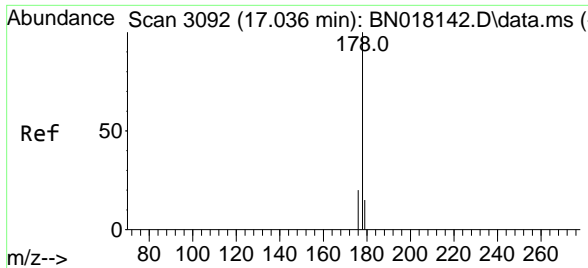
Tgt Ion	Resp	Lower	Upper
166	100		
165	96.4	79.2	118.8
167	14.7	11.1	16.7



#14  
 Pentachlorophenol  
 Concen: 0.505 ng/u1  
 RT: 16.661 min Scan# 3003  
 Delta R.T. -0.001 min  
 Lab File: BN018152.D  
 Acq: 22 Dec 2021 15:59

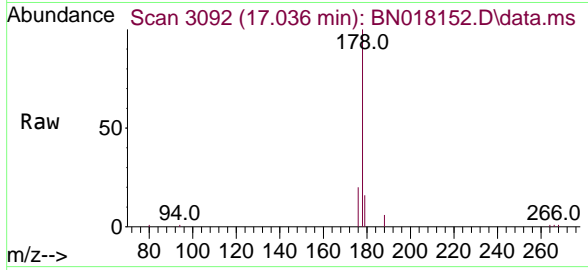
Tgt Ion	Resp	Lower	Upper
266	100		
264	63.3	51.9	77.9
268	66.9	51.8	77.6





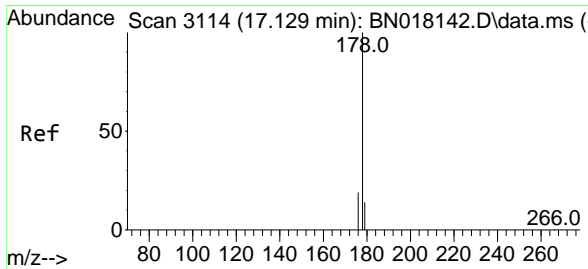
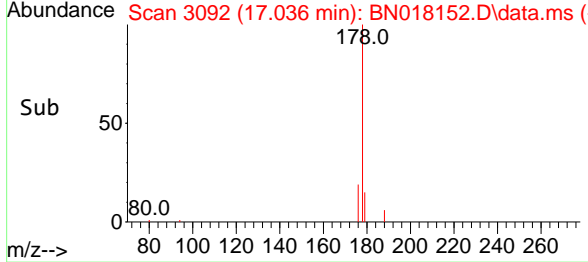
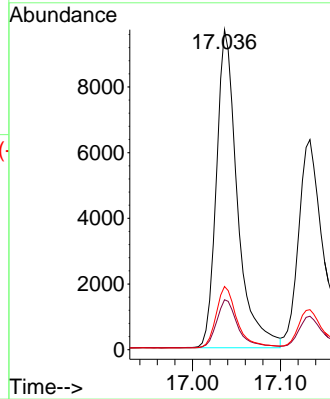
#15  
 Phenanthrene  
 Concen: 0.345 ng/u1  
 RT: 17.036 min Scan# 3092  
 Delta R.T. -0.001 min  
 Lab File: BN018152.D  
 Acq: 22 Dec 2021 15:59

Instrument :  
 BNA\_N  
 ClientSampleId :  
 SLCS450



Tgt Ion:178 Resp: 16031

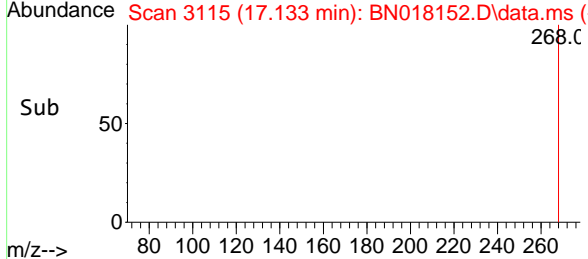
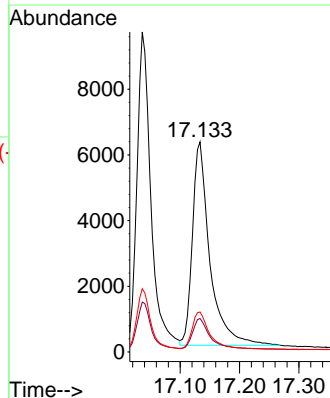
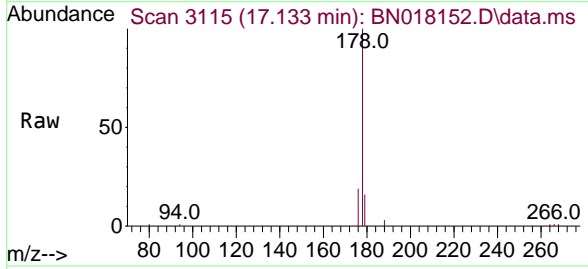
Ion	Ratio	Lower	Upper
178	100		
179	15.6	12.4	18.6
176	19.8	15.5	23.3

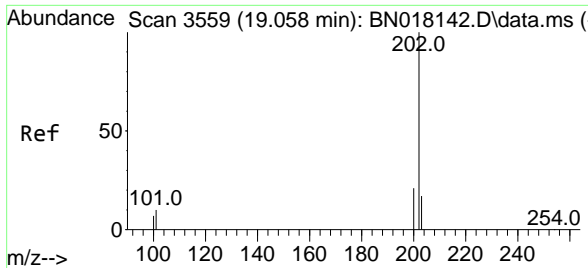


#16  
 Anthracene  
 Concen: 0.335 ng/u1  
 RT: 17.133 min Scan# 3115  
 Delta R.T. 0.003 min  
 Lab File: BN018152.D  
 Acq: 22 Dec 2021 15:59

Tgt Ion:178 Resp: 12607

Ion	Ratio	Lower	Upper
178	100		
179	15.9	12.7	19.1
176	19.0	15.3	22.9

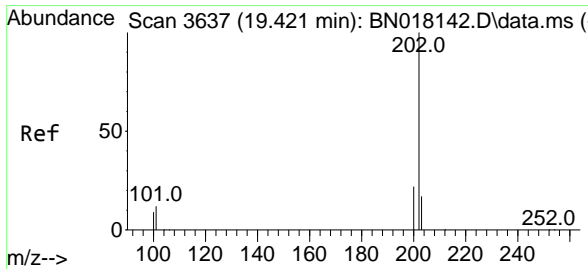
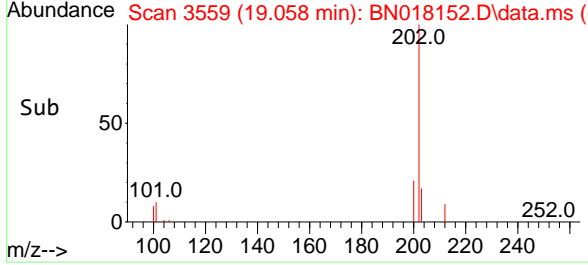
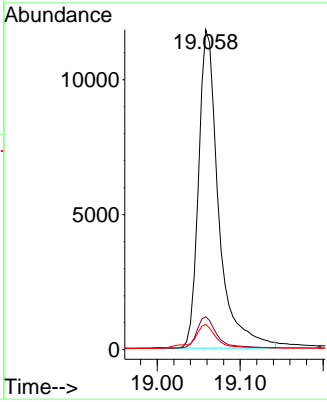
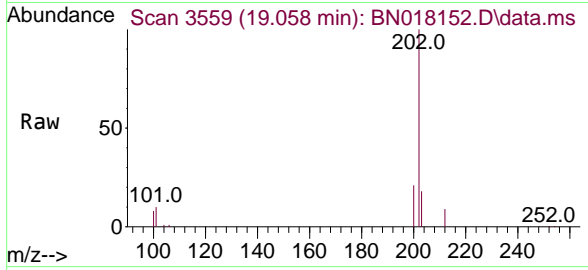




#19  
 Fluoranthene  
 Concen: 0.358 ng/u1  
 RT: 19.058 min Scan# 31  
 Delta R.T. -0.001 min  
 Lab File: BN018152.D  
 Acq: 22 Dec 2021 15:59

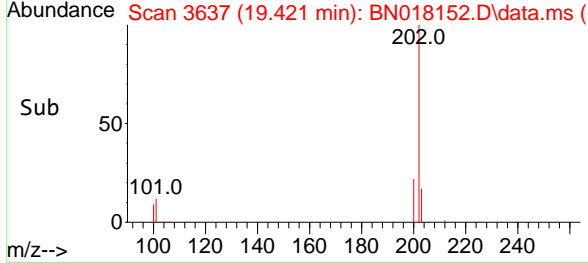
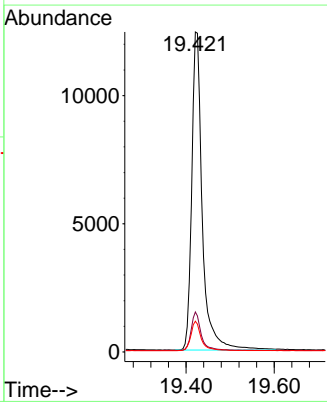
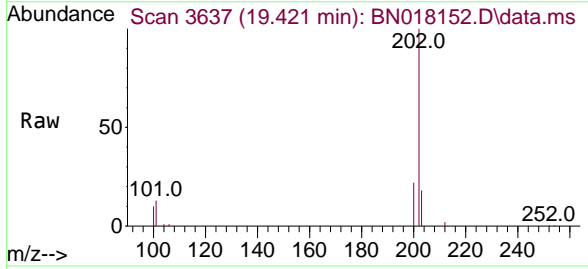
Instrument : BNA\_N  
 ClientSampleId : SLCS450

Tgt Ion	Ratio	Lower	Upper
202	100		
101	10.3	7.9	11.9
100	7.9	5.8	8.8

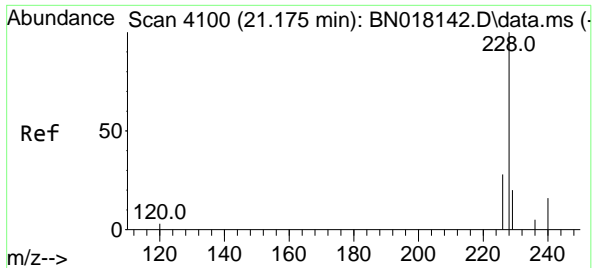


#20  
 Pyrene  
 Concen: 0.358 ng/u1  
 RT: 19.421 min Scan# 3637  
 Delta R.T. -0.001 min  
 Lab File: BN018152.D  
 Acq: 22 Dec 2021 15:59

Tgt Ion	Ratio	Lower	Upper
202	100		
101	12.5	8.9	13.3
100	9.6	7.0	10.4





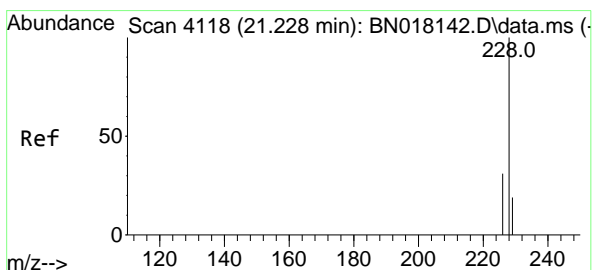
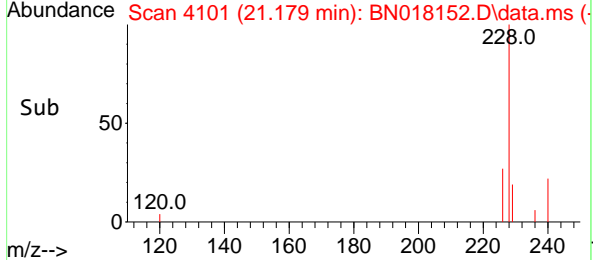
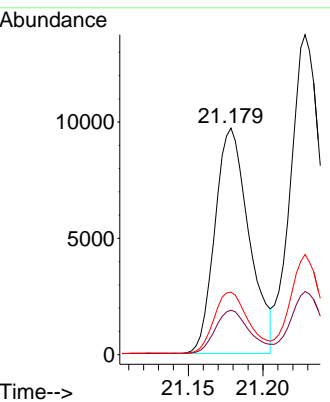
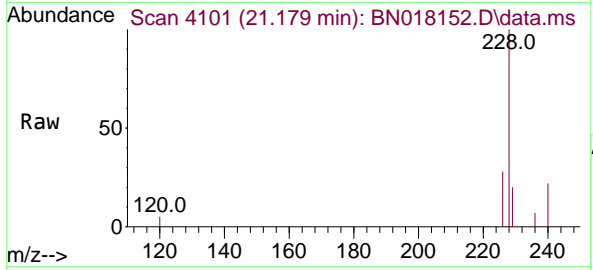


#21  
 Benzo(a)anthracene  
 Concen: 0.321 ng/u1  
 RT: 21.179 min Scan# 4101  
 Delta R.T. 0.005 min  
 Lab File: BN018152.D  
 Acq: 22 Dec 2021 15:59

Instrument : BNA\_N  
 ClientSampleId : SLCS450

Tgt Ion:228 Resp: 15425

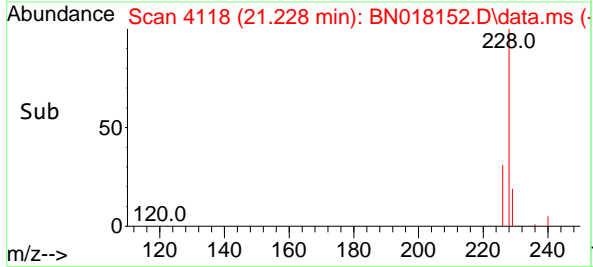
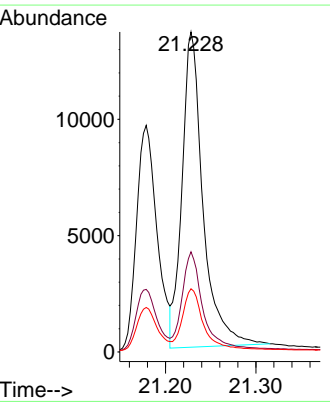
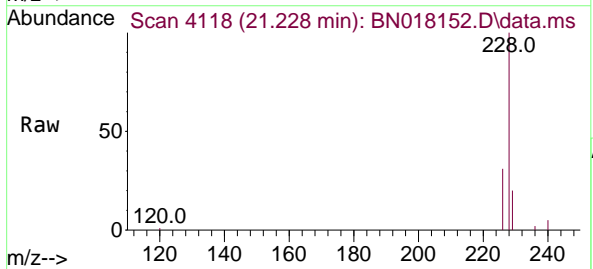
Ion	Ratio	Lower	Upper
228	100		
229	19.7	15.3	22.9
226	27.6	22.1	33.1

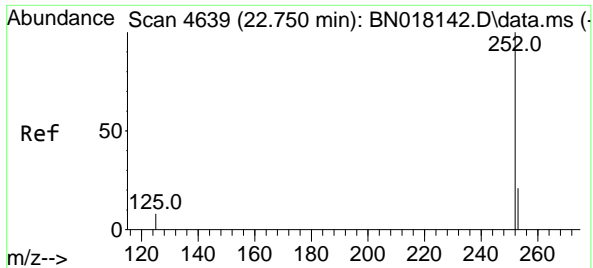


#22  
 Chrysene  
 Concen: 0.371 ng/u1  
 RT: 21.228 min Scan# 4118  
 Delta R.T. 0.002 min  
 Lab File: BN018152.D  
 Acq: 22 Dec 2021 15:59

Tgt Ion:228 Resp: 21827

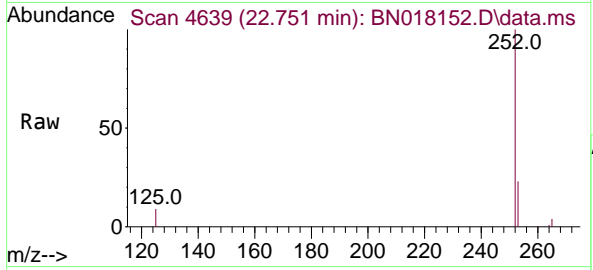
Ion	Ratio	Lower	Upper
228	100		
226	31.3	24.6	36.8
229	19.8	15.7	23.5





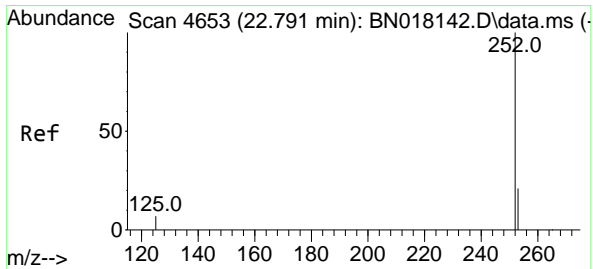
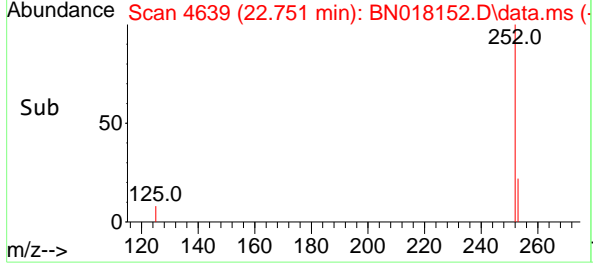
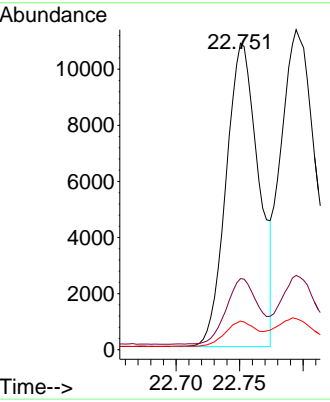
#24  
 Benzo(b)fluoranthene  
 Concen: 0.361 ng/u1  
 RT: 22.751 min Scan# 4639  
 Delta R.T. 0.005 min  
 Lab File: BN018152.D  
 Acq: 22 Dec 2021 15:59

Instrument : BNA\_N  
 ClientSampleId : SLCS450



Tgt Ion:252 Resp: 19254

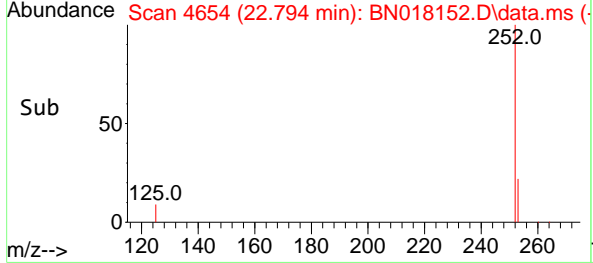
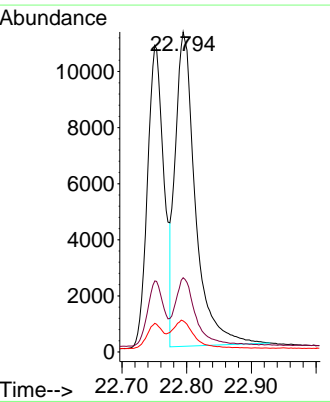
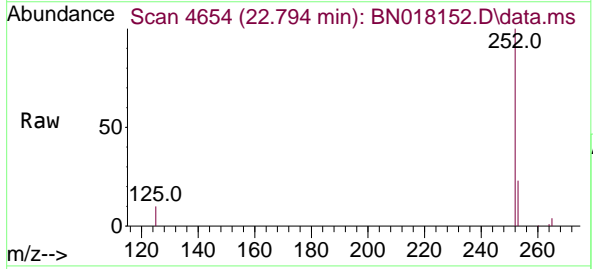
Ion	Ratio	Lower	Upper
252	100		
253	23.2	0.0	45.2
125	9.3	0.0	18.2

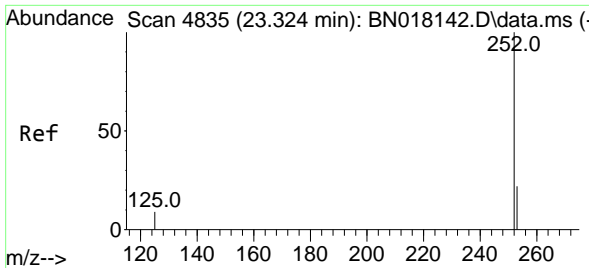


#25  
 Benzo(k)fluoranthene  
 Concen: 0.365 ng/u1  
 RT: 22.794 min Scan# 4654  
 Delta R.T. 0.005 min  
 Lab File: BN018152.D  
 Acq: 22 Dec 2021 15:59

Tgt Ion:252 Resp: 24244

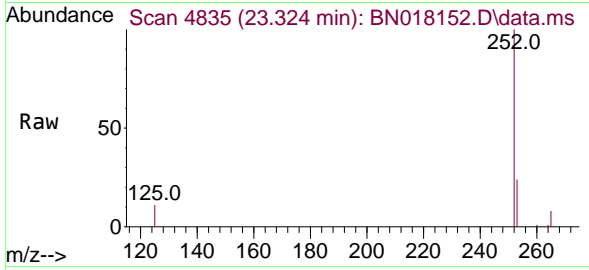
Ion	Ratio	Lower	Upper
252	100		
253	23.2	18.2	27.4
125	9.7	7.7	11.5





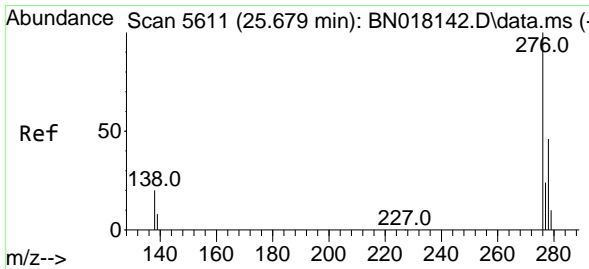
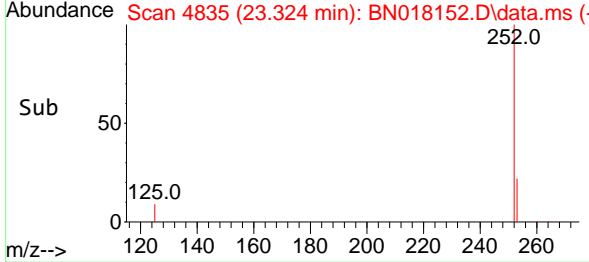
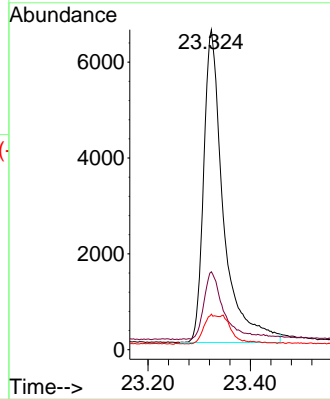
#26  
 Benzo(a)pyrene  
 Concen: 0.347 ng/u1  
 RT: 23.324 min Scan# 41  
 Delta R.T. 0.005 min  
 Lab File: BN018152.D  
 Acq: 22 Dec 2021 15:59

Instrument :  
 BNA\_N  
 ClientSampleId :  
 SLCS450



Tgt Ion:252 Resp: 17498

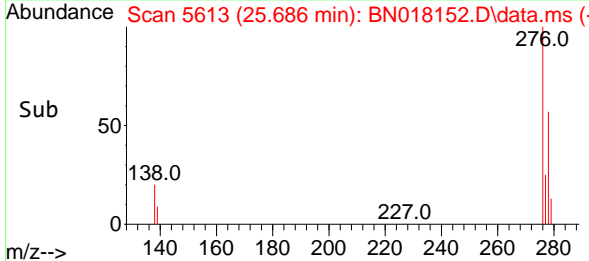
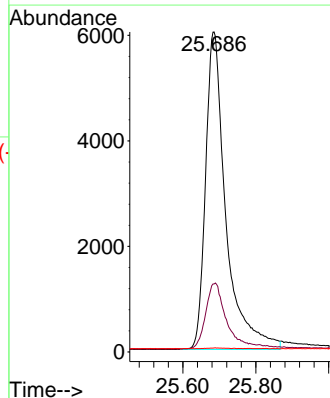
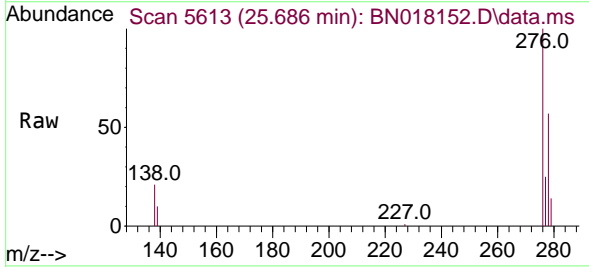
Ion	Ratio	Lower	Upper
252	100		
253	24.3	18.6	28.0
125	11.1	8.8	13.2

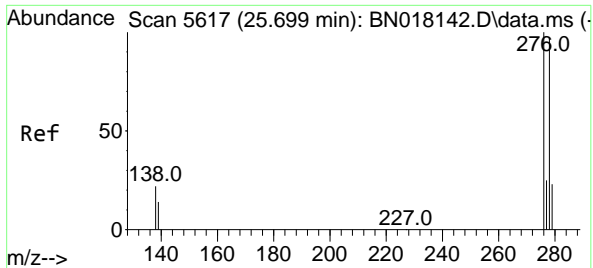


#27  
 Indeno(1,2,3-cd)pyrene  
 Concen: 0.350 ng/u1  
 RT: 25.686 min Scan# 5613  
 Delta R.T. 0.009 min  
 Lab File: BN018152.D  
 Acq: 22 Dec 2021 15:59

Tgt Ion:276 Resp: 23277

Ion	Ratio	Lower	Upper
276	100		
138	21.7	17.7	26.5
227	0.2	0.1	0.1

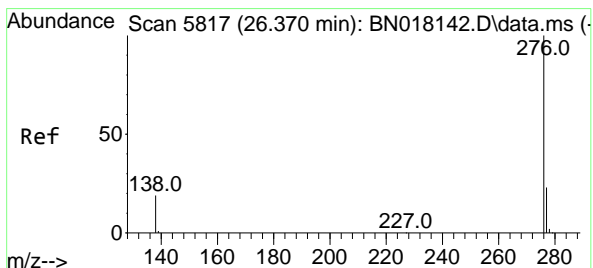
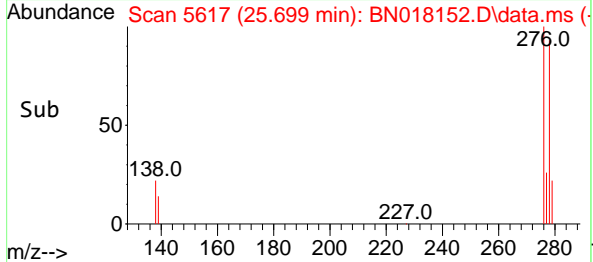
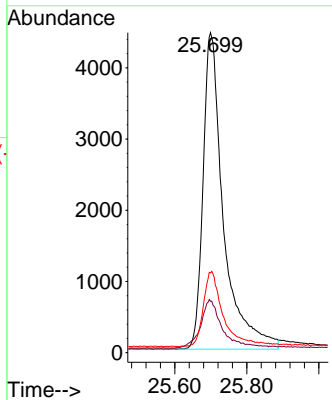
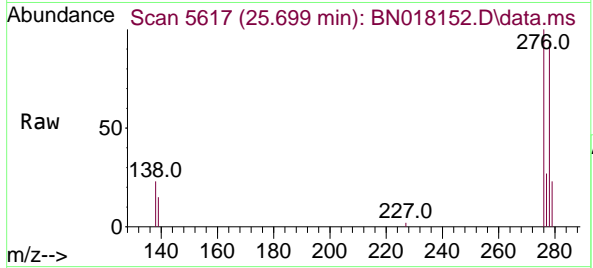




#28  
 Dibenzo(a,h)anthracene  
 Concen: 0.347 ng/ul  
 RT: 25.699 min Scan# 517  
 Delta R.T. 0.002 min  
 Lab File: BN018152.D  
 Acq: 22 Dec 2021 15:59

Instrument :  
 BNA\_N  
 ClientSampleId :  
 SLCS450

Tgt Ion	Resp	Lower	Upper
278	17493		
278	100		
139	16.0	13.1	19.7
279	25.0	20.6	31.0



#29  
 Benzo(g,h,i)perylene  
 Concen: 0.359 ng/ul  
 RT: 26.370 min Scan# 5817  
 Delta R.T. 0.002 min  
 Lab File: BN018152.D  
 Acq: 22 Dec 2021 15:59

Tgt Ion	Resp	Lower	Upper
276	19695		
276	100		
138	19.5	15.8	23.8
277	24.4	19.7	29.5

