

Data Path : Z:\SVOASRV\HPCHEM1\BNA_N\DATA\BN021020\
 Data File : BN009686.D
 Acq On : 10 Feb 2020 15:36
 Operator : CG/JU
 Sample : L1324-19ME
 Misc :
 ALS Vial : 10 Sample Multiplier: 1

Instrument :
 BNA_N
 ClientSampleId :
 GAT74ME

Integration Parameters: LSCINT.P

Integrator: RTE
 Smoothing : OFF
 Sampling : 1
 Start Thrs: 0.2
 Stop Thrs : 0

Filtering: 5
 Min Area: 0.1 % of largest Peak
 Max Peaks: 100
 Peak Location: TOP

If leading or trailing edge < 100 prefer < Baseline drop else tangent >
 Peak separation: 5

Method : Z:\SVOASRV\HPCHEM1\BNA_N\METHODS\SOM-EPA-BN020320MA.M
 Title : SVOA CALIBRATION

Signal : TIC

peak #	R.T. min	first scan	max scan	last scan	PK TY	peak height	corr. area	corr. % max.	% of total
1	6.628	613	619	635	rVB	283618	485569	7.59%	0.634%
2	6.787	640	646	658	rBV	252769	405194	6.33%	0.529%
3	6.969	671	677	687	rVB	294259	476564	7.45%	0.623%
4	7.428	748	755	766	rBV	554180	852086	13.32%	1.113%
5	8.140	868	876	889	rBV	360549	610339	9.54%	0.797%
6	8.569	943	949	961	rBV	326152	544811	8.52%	0.712%
7	9.287	1064	1071	1083	rBV	265528	449824	7.03%	0.588%
8	9.816	1156	1161	1172	rBV	307856	560820	8.77%	0.733%
9	10.175	1214	1222	1229	rBV	762161	1232776	19.27%	1.611%
10	10.334	1242	1249	1270	rVB	270368	520492	8.14%	0.680%
11	13.493	1780	1786	1798	rVV	750335	1354936	21.18%	1.770%
12	13.622	1803	1808	1811	rVV	68053	101259	1.58%	0.132%
13	13.751	1824	1830	1833	rBV	663956	1114918	17.43%	1.457%
14	13.781	1833	1835	1850	rVB	772500	1054022	16.48%	1.377%
15	14.063	1878	1883	1890	rVV	1036580	1587568	24.82%	2.074%
16	14.128	1890	1894	1900	rVB2	65539	99819	1.56%	0.130%
17	14.310	1918	1925	1933	rBV	232999	470055	7.35%	0.614%
18	14.692	1982	1990	1998	rBV3	84348	188786	2.95%	0.247%
19	14.951	2028	2034	2040	rVB2	146364	241243	3.77%	0.315%
20	15.069	2040	2054	2060	rBV	1094390	1591272	24.87%	2.079%
21	15.145	2060	2067	2075	rVB	79331	173269	2.71%	0.226%
22	15.222	2075	2080	2091	rBV2	330731	628121	9.82%	0.821%
23	15.328	2093	2098	2101	rBV4	51689	98418	1.54%	0.129%
24	15.822	2175	2182	2185	rBV3	122742	241473	3.77%	0.315%
25	16.134	2229	2235	2240	rVV5	59485	138095	2.16%	0.180%
26	16.616	2313	2317	2321	rBV	85134	126541	1.98%	0.165%
27	16.822	2346	2352	2356	rBV	1347316	1850320	28.92%	2.417%
28	16.863	2356	2359	2363	rVV	367945	474124	7.41%	0.619%
29	16.922	2363	2369	2372	rVV2	984301	1428828	22.34%	1.867%
30	16.957	2372	2375	2381	rVV	518721	705766	11.03%	0.922%
31	17.022	2381	2386	2392	rVB4	58094	121565	1.90%	0.159%
32	17.351	2437	2442	2446	rVV2	248186	366459	5.73%	0.479%
33	17.404	2447	2451	2458	rVB2	93089	143513	2.24%	0.187%
34	17.516	2465	2470	2473	rBV2	104169	158410	2.48%	0.207%

Data Path : Z:\SVOASRV\HPCHEM1\BNA_N\DATA\BN021020\
 Data File : BN009686.D
 Acq On : 10 Feb 2020 15:36
 Operator : CG/JU
 Sample : L1324-19ME
 Misc :
 ALS Vial : 10 Sample Multiplier: 1

Instrument :
 BNA_N
 ClientSampleId :
 GAT74ME

Integration Parameters: LSCINT.P

Integrator: RTE
 Smoothing : OFF
 Sampling : 1
 Start Thrs: 0.2
 Stop Thrs : 0

Filtering: 5
 Min Area: 0.1 % of largest Peak
 Max Peaks: 100
 Peak Location: TOP

If leading or trailing edge < 100 prefer < Baseline drop else tangent >
 Peak separation: 5

Method : Z:\SVOASRV\HPCHEM1\BNA_N\METHODS\SOM-EPA-BN020320MA.M
 Title : SVOA CALIBRATION

35	17.698	2497	2501	2505	rVV	222109	331906	5.19%	0.434%
36	17.745	2505	2509	2516	rVB	425194	607347	9.49%	0.793%
37	17.828	2518	2523	2527	rVV	136075	184777	2.89%	0.241%
38	17.886	2527	2533	2538	rBV2	1057418	1752717	27.40%	2.290%
39	17.928	2538	2540	2550	rVB	285677	366224	5.72%	0.478%
40	18.022	2551	2556	2558	rBV3	72284	105138	1.64%	0.137%
41	18.204	2577	2587	2591	rBV	411575	668220	10.45%	0.873%
42	18.251	2591	2595	2601	rVB	799005	1069553	16.72%	1.397%
43	18.363	2610	2614	2621	rVB4	46563	112263	1.75%	0.147%
44	18.428	2621	2625	2627	rBV3	89104	120881	1.89%	0.158%
45	18.510	2635	2639	2642	rBV	84374	104082	1.63%	0.136%
46	18.545	2642	2645	2650	rVB	123375	168626	2.64%	0.220%
47	18.633	2654	2660	2664	rBV2	435979	736331	11.51%	0.962%
48	18.692	2664	2670	2673	rVV2	318351	502772	7.86%	0.657%
49	18.722	2673	2675	2679	rVB	170999	184042	2.88%	0.240%
50	18.775	2679	2684	2691	rBV	711903	1169284	18.28%	1.528%
51	18.892	2696	2704	2712	rVB	3415240	4694445	73.38%	6.133%
52	18.969	2712	2717	2719	rBV	142096	196489	3.07%	0.257%
53	19.045	2726	2730	2735	rVB	746435	930915	14.55%	1.216%
54	19.104	2736	2740	2744	rBV2	308145	435113	6.80%	0.568%
55	19.163	2747	2750	2756	rVB	202047	295490	4.62%	0.386%
56	19.233	2756	2762	2763	rBV	1090967	1571740	24.57%	2.053%
57	19.257	2763	2766	2776	rVB	4858875	6397118	100.00%	8.357%
58	19.351	2776	2782	2787	rVB4	168284	325161	5.08%	0.425%
59	19.439	2793	2797	2801	rBV2	83916	114200	1.79%	0.149%
60	19.504	2804	2808	2815	rVB7	121186	205028	3.21%	0.268%
61	19.592	2818	2823	2834	rBV3	460509	1036356	16.20%	1.354%
62	19.680	2835	2838	2841	rBV4	128102	158921	2.48%	0.208%
63	19.733	2841	2847	2849	rVV4	392971	711599	11.12%	0.930%
64	19.763	2849	2852	2857	rVB	559064	732425	11.45%	0.957%
65	19.822	2858	2862	2866	rBV5	98419	164738	2.58%	0.215%
66	19.869	2866	2870	2874	rVV2	174197	208863	3.26%	0.273%
67	19.922	2875	2879	2883	rVB	599485	737326	11.53%	0.963%
68	20.010	2890	2894	2898	rBV5	54087	108924	1.70%	0.142%
69	20.063	2898	2903	2906	rVV	460751	575276	8.99%	0.752%
70	20.104	2906	2910	2915	rVB2	518160	683560	10.69%	0.893%
71	20.239	2930	2933	2937	rVB5	90539	121386	1.90%	0.159%

Data Path : Z:\SVOASRV\HPCHEM1\BNA_N\DATA\BN021020\
 Data File : BN009686.D
 Acq On : 10 Feb 2020 15:36
 Operator : CG/JU
 Sample : L1324-19ME
 Misc :
 ALS Vial : 10 Sample Multiplier: 1

Instrument :
 BNA_N
 ClientSampleId :
 GAT74ME

Integration Parameters: LSCINT.P

Integrator: RTE
 Smoothing : OFF
 Sampling : 1
 Start Thrs: 0.2
 Stop Thrs : 0

Filtering: 5
 Min Area: 0.1 % of largest Peak
 Max Peaks: 100
 Peak Location: TOP

If leading or trailing edge < 100 prefer < Baseline drop else tangent >
 Peak separation: 5

Method : Z:\SVOASRV\HPCHEM1\BNA_N\METHODS\SOM-EPA-BN020320MA.M
 Title : SVOA CALIBRATION

72	20.322	2943	2947	2950	rBV3	131264	166518	2.60%	0.218%
73	20.516	2976	2980	2987	rVB	336399	495950	7.75%	0.648%
74	20.675	3000	3007	3011	rBV2	434233	749241	11.71%	0.979%
75	20.722	3011	3015	3018	rVB	400894	472490	7.39%	0.617%
76	20.775	3018	3024	3031	rBV4	646817	1166936	18.24%	1.525%
77	20.922	3046	3049	3058	rVB	109815	179478	2.81%	0.234%
78	21.033	3061	3068	3072	rVV2	2497463	5041442	78.81%	6.586%
79	21.074	3072	3075	3082	rVV	1696620	2273465	35.54%	2.970%
80	21.163	3086	3090	3093	rVV3	122143	173147	2.71%	0.226%
81	21.245	3096	3104	3120	rVB2	828390	1734025	27.11%	2.265%
82	21.398	3126	3130	3135	rBV4	168487	259768	4.06%	0.339%
83	21.522	3149	3151	3154	rBV2	112740	123661	1.93%	0.162%
84	21.574	3154	3160	3165	rVV	459576	690589	10.80%	0.902%
85	21.639	3165	3171	3175	rVB3	327763	612491	9.57%	0.800%
86	21.757	3188	3191	3194	rBV3	228365	310673	4.86%	0.406%
87	21.786	3194	3196	3200	rVB2	199074	243339	3.80%	0.318%
88	21.857	3206	3208	3212	rVB	163074	181523	2.84%	0.237%
89	22.074	3242	3245	3251	rVB	381134	511944	8.00%	0.669%
90	22.192	3261	3265	3270	rVB	452461	632521	9.89%	0.826%
91	22.286	3279	3281	3292	rVB5	151000	302734	4.73%	0.395%
92	22.533	3317	3323	3334	rBV2	1226296	3307750	51.71%	4.321%
93	22.686	3345	3349	3355	rBV	396394	606090	9.47%	0.792%
94	22.968	3392	3397	3401	rBV	531900	885310	13.84%	1.157%
95	23.016	3401	3405	3409	rVV	628093	1070217	16.73%	1.398%
96	23.063	3409	3413	3419	rVB2	944880	1640795	25.65%	2.144%
97	23.145	3422	3427	3433	rBV2	1005172	1707004	26.68%	2.230%
98	23.663	3510	3515	3521	rVB3	256867	464543	7.26%	0.607%
99	23.733	3524	3527	3539	rVB7	156978	385898	6.03%	0.504%
100	25.210	3771	3778	3788	rVB	363684	968603	15.14%	1.265%

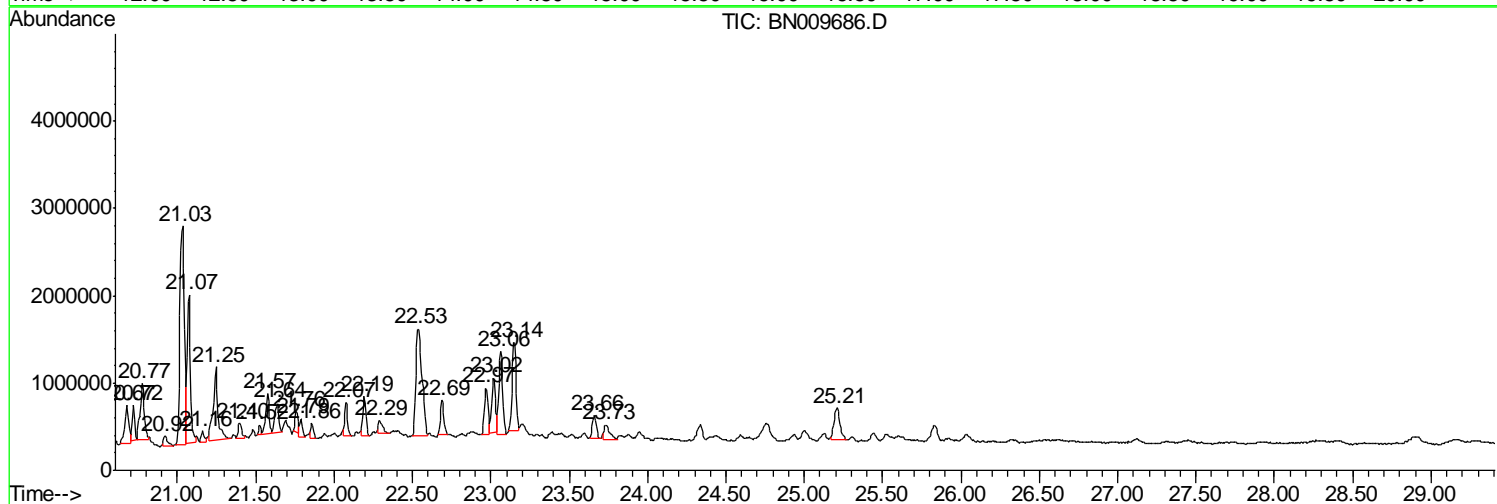
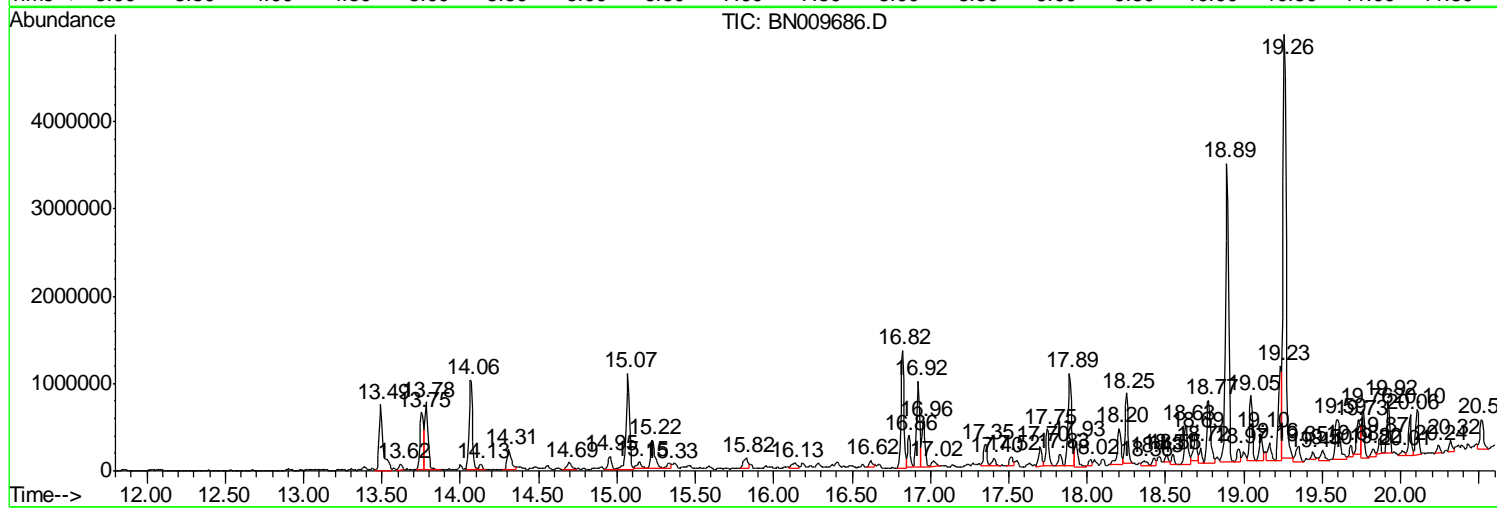
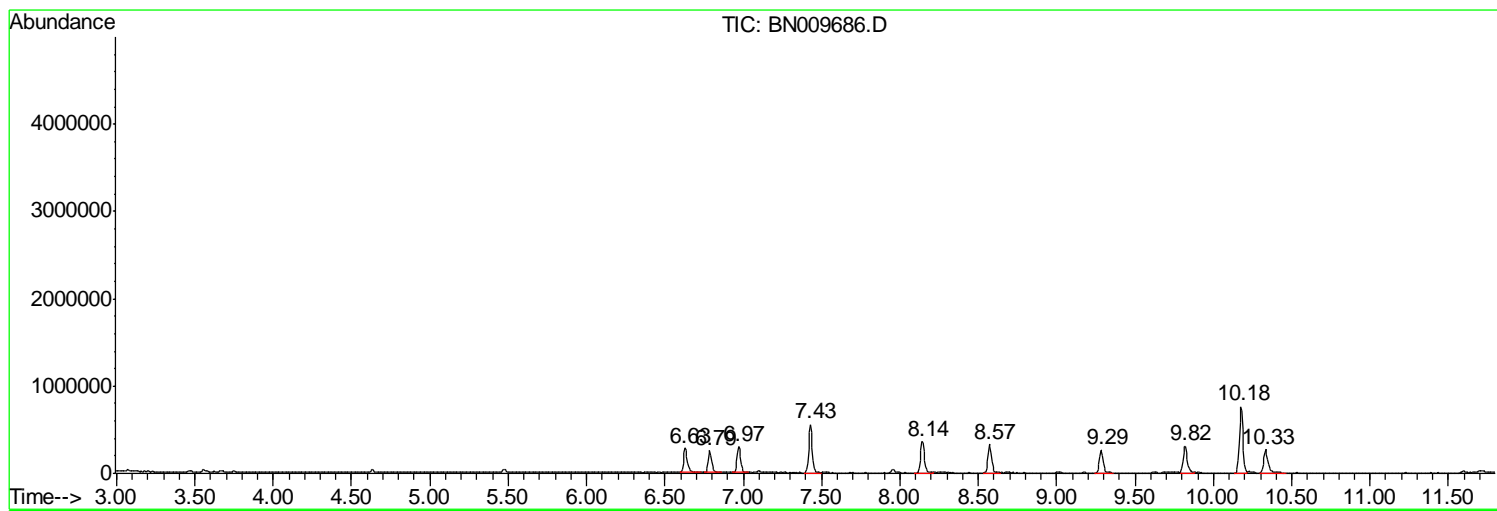
Sum of corrected areas: 76544636

Data Path : Z:\SVOASRV\HPCHEM1\BNA N\DATA\BN021020\
 Data File : BN009686.D
 Acq On : 10 Feb 2020 15:36
 Operator : CG/JU
 Sample : L1324-19ME
 Misc :
 ALS Vial : 10 Sample Multiplier: 1

Instrument :
 BNA_N
 ClientSampleId :
 GAT74ME

Quant Method : Z:\SVOASRV\HPCHEM1\BNA_N\METHODS\SOM-EPA-BN020320MA.M
 Quant Title : SVOA CALIBRATION

TIC Library : C:\DATABASE\NIST11.L
 TIC Integration Parameters: LSCINT.P



Data Path : Z:\SVOASRV\HPCHEM1\BNA N\DATA\BN021020\
 Data File : BN009686.D
 Acq On : 10 Feb 2020 15:36
 Operator : CG/JU
 Sample : L1324-19ME
 Misc :
 ALS Vial : 10 Sample Multiplier: 1

Instrument :
 BNA_N
 ClientSampled :
 GAT74ME

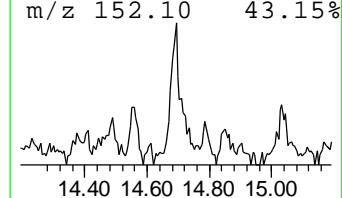
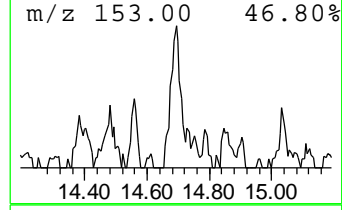
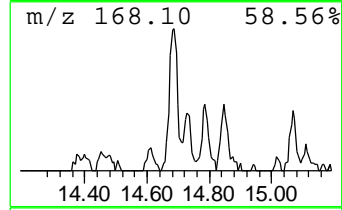
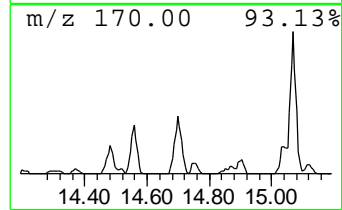
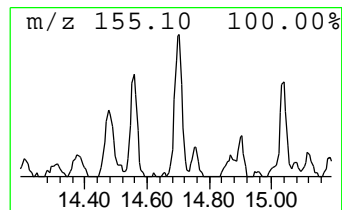
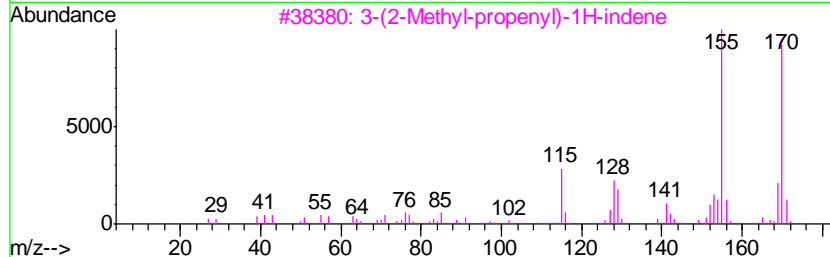
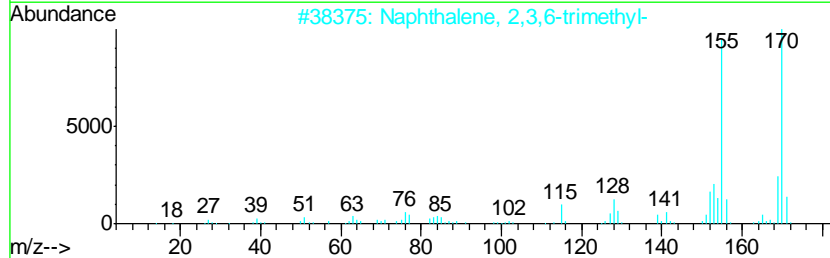
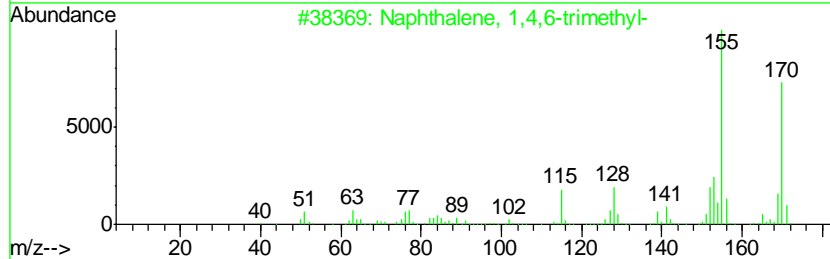
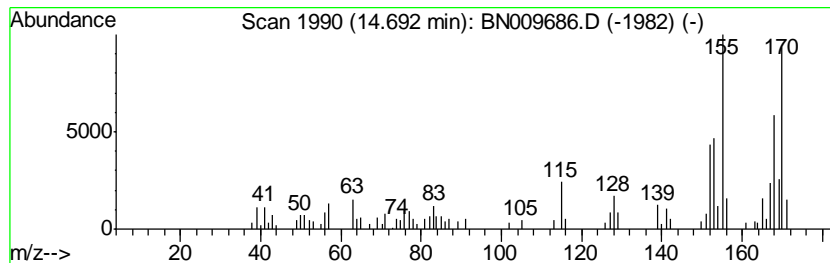
Quant Method : Z:\SVOASRV\HPCHEM1\BNA_N\METHODS\SOM-EPA-BN020320MA.M
 Quant Title : SVOA CALIBRATION

TIC Library : C:\DATABASE\NIST11.L
 TIC Integration Parameters: LSCINT.P

 Peak Number 1 Naphthalene, 1,4,6-trimethyl- Concentration Rank 29

R.T.	EstConc	Area	Relative to ISTD	R.T.
14.69	2.38 ng/ul	188786	Acenaphthene-d10	14.06

Hit#	of	Tentative ID	MW	MolForm	CAS#	Qual
1	5	Naphthalene, 1,4,6-trimethyl-	170	C13H14	002131-42-2	91
2		Naphthalene, 2,3,6-trimethyl-	170	C13H14	000829-26-5	90
3		3-(2-Methyl-propenyl)-1H-indene	170	C13H14	1000187-78-5	78
4		Naphthalene, 1,6,7-trimethyl-	170	C13H14	002245-38-7	70
5		Naphthalene, 1,6,7-trimethyl-	170	C13H14	002245-38-7	60



Data Path : Z:\SVOASRV\HPCHEM1\BNA N\DATA\BN021020\
 Data File : BN009686.D
 Acq On : 10 Feb 2020 15:36
 Operator : CG/JU
 Sample : L1324-19ME
 Misc :
 ALS Vial : 10 Sample Multiplier: 1

Instrument :
 BNA_N
 ClientSampled :
 GAT74ME

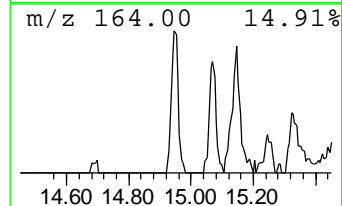
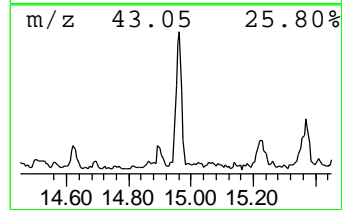
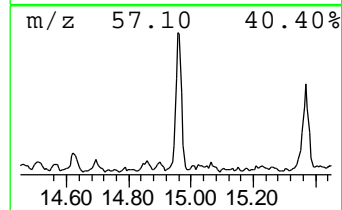
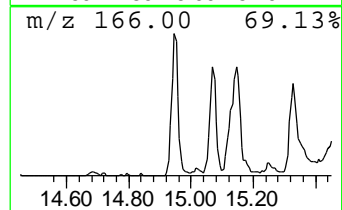
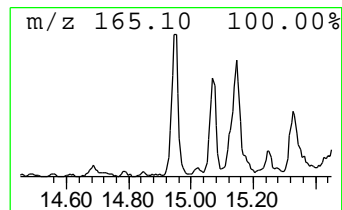
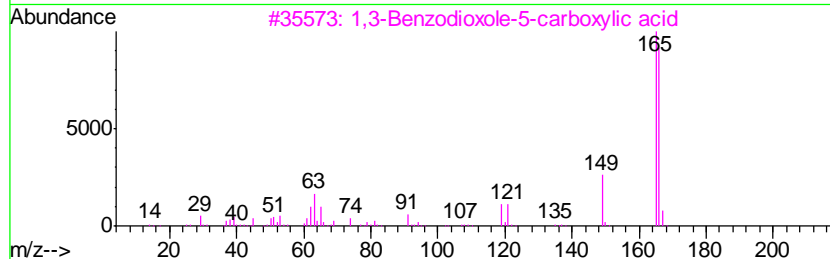
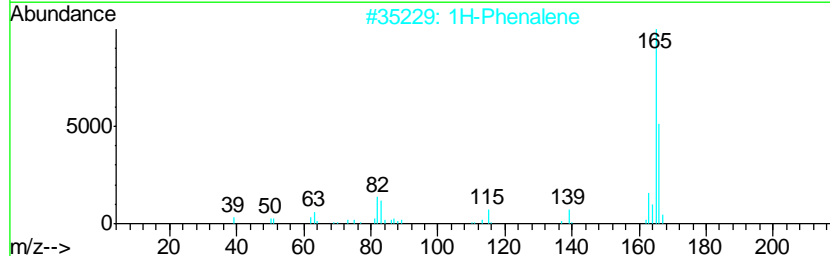
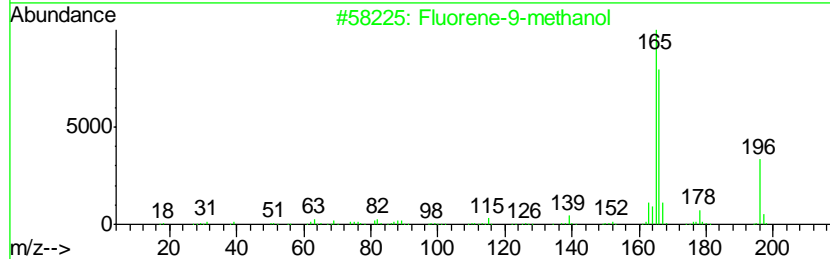
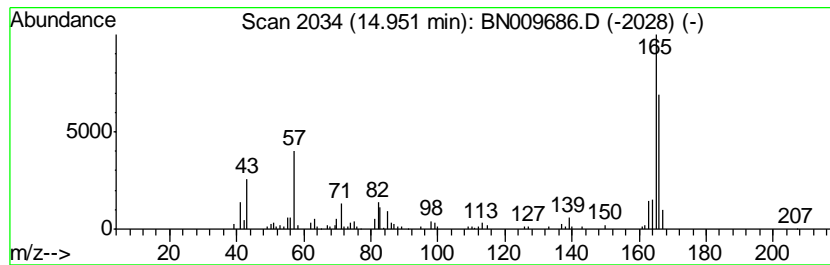
Quant Method : Z:\SVOASRV\HPCHEM1\BNA_N\METHODS\SOM-EPA-BN020320MA.M
 Quant Title : SVOA CALIBRATION

TIC Library : C:\DATABASE\NIST11.L
 TIC Integration Parameters: LSCINT.P

 Peak Number 2 Fluorene-9-methanol Concentration Rank 20

R.T.	EstConc	Area	Relative to ISTD	R.T.
14.95	3.04 ng/ul	241243	Acenaphthene-d10	14.06

Hit#	of	Tentative ID	MW	MolForm	CAS#	Qual
1	5	Fluorene-9-methanol	196	C14H12O	024324-17-2	64
2		1H-Phenylene	166	C13H10	000203-80-5	64
3		1,3-Benzodioxole-5-carboxylic acid	166	C8H6O4	000094-53-1	52
4		1,3-Benzodioxole-5-carboxylic acid	166	C8H6O4	000094-53-1	52
5		L-Alanine, N-[(9H-fluoren-9-yl)me...	311	C18H17NO4	035661-39-3	50



Data Path : Z:\SVOASRV\HPCHEM1\BNA N\DATA\BN021020\
 Data File : BN009686.D
 Acq On : 10 Feb 2020 15:36
 Operator : CG/JU
 Sample : L1324-19ME
 Misc :
 ALS Vial : 10 Sample Multiplier: 1

Instrument :
 BNA_N
 ClientSampleID :
 GAT74ME

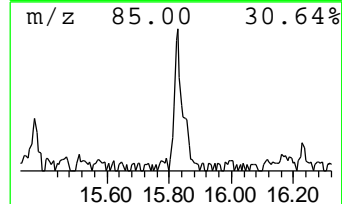
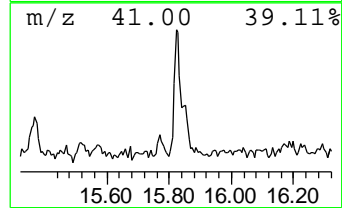
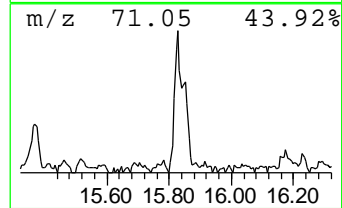
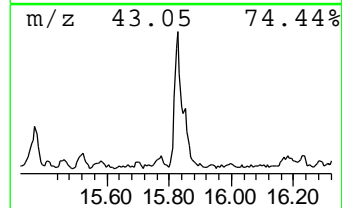
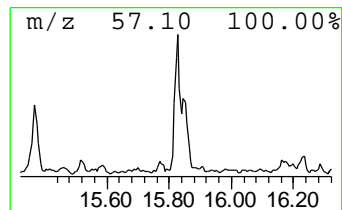
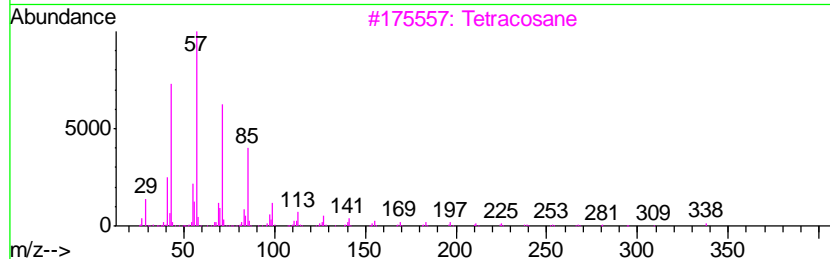
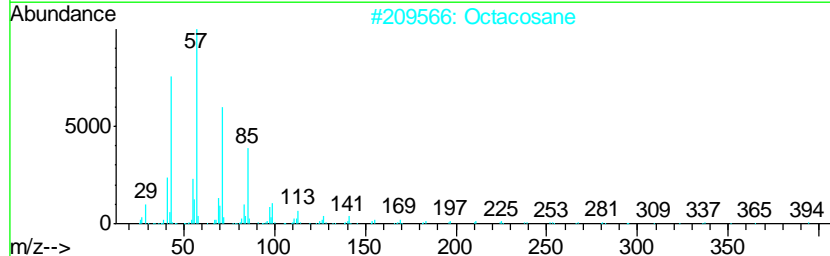
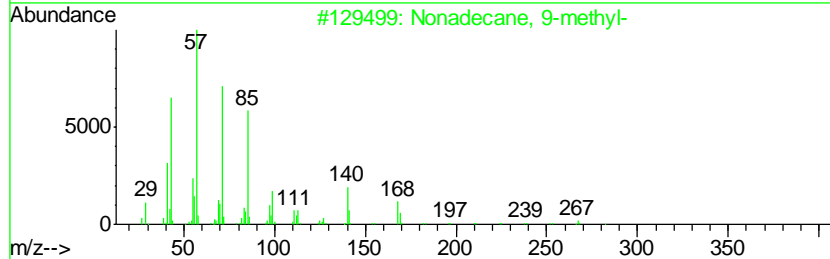
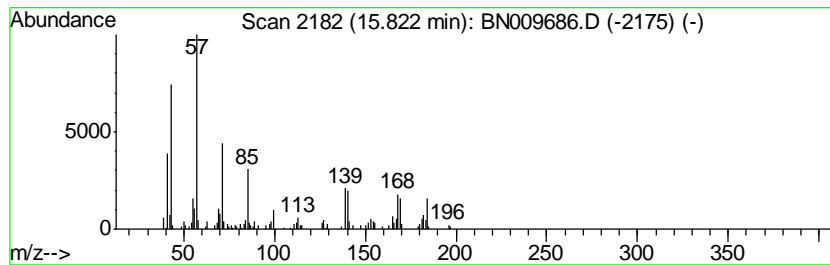
Quant Method : Z:\SVOASRV\HPCHEM1\BNA_N\METHODS\SOM-EPA-BN020320MA.M
 Quant Title : SVOA CALIBRATION

TIC Library : C:\DATABASE\NIST11.L
 TIC Integration Parameters: LSCINT.P

 Peak Number 3 (DEL) Alkane: Straight-Chai... Concentration Rank 27

R.T.	EstConc	Area	Relative to ISTD	R.T.
15.82	2.61 ng/ul	241473	Phenanthrene-d10	16.82

Hit#	of	Tentative ID	MW	MolForm	CAS#	Qual
1	5	Nonadecane, 9-methyl-	282	C20H42	013287-24-6	49
2		Octacosane	394	C28H58	000630-02-4	49
3		Tetracosane	338	C24H50	000646-31-1	49
4		Eicosane	282	C20H42	000112-95-8	46
5		Heptadecane	240	C17H36	000629-78-7	46



Data Path : Z:\SVOASRV\HPCHEM1\BNA N\DATA\BN021020\
 Data File : BN009686.D
 Acq On : 10 Feb 2020 15:36
 Operator : CG/JU
 Sample : L1324-19ME
 Misc :
 ALS Vial : 10 Sample Multiplier: 1

Instrument :
 BNA_N
 ClientSampled :
 GAT74ME

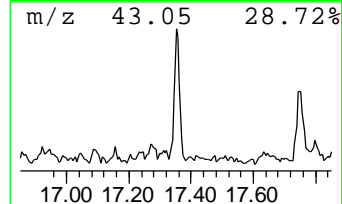
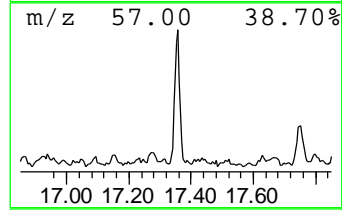
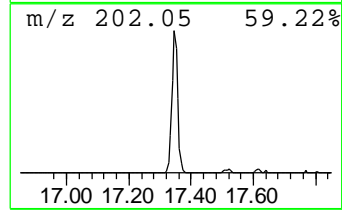
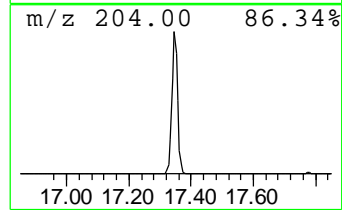
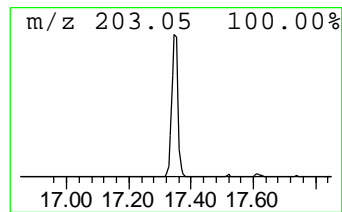
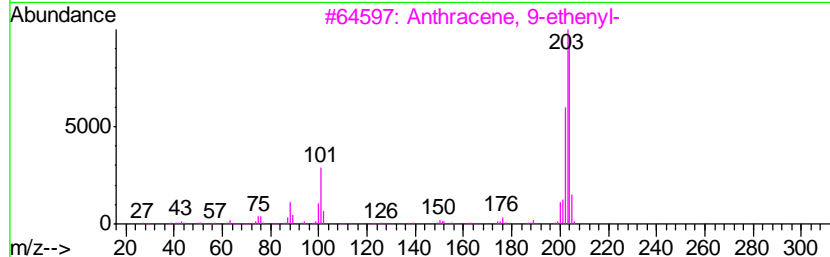
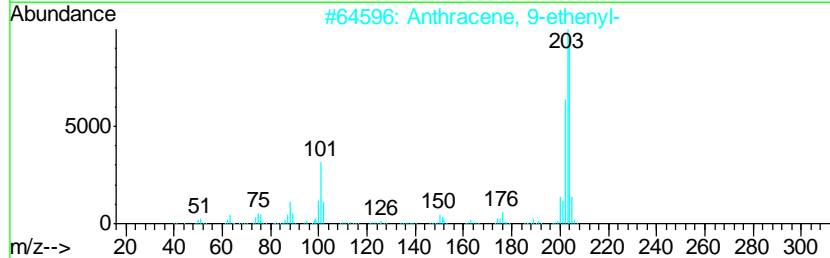
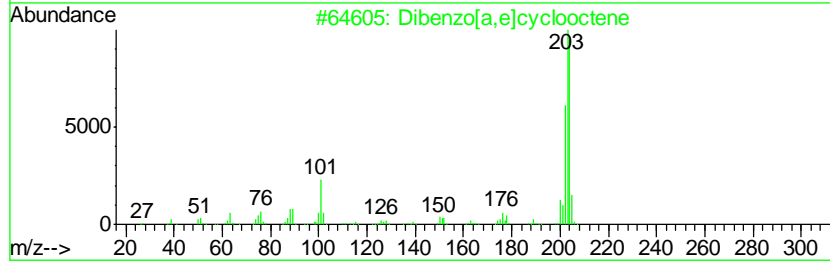
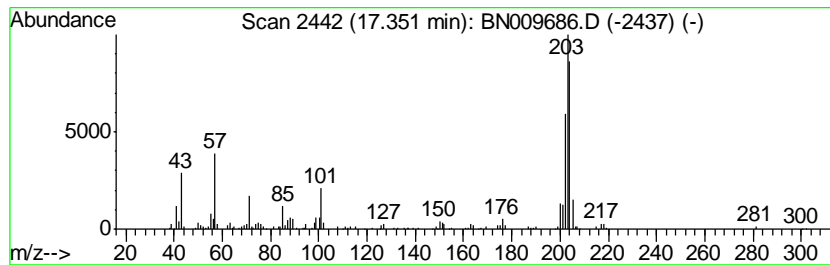
Quant Method : Z:\SVOASRV\HPCHEM1\BNA_N\METHODS\SOM-EPA-BN020320MA.M
 Quant Title : SVOA CALIBRATION

TIC Library : C:\DATABASE\NIST11.L
 TIC Integration Parameters: LSCINT.P

 Peak Number 4 Dibenzo[a,e]cyclooctene Concentration Rank 15

R.T.	EstConc	Area	Relative to ISTD	R.T.
17.35	3.96 ng/ul	366459	Phenanthrene-d10	16.82

Hit#	of	Tentative ID	MW	MolForm	CAS#	Qual
1	5	Dibenzo[a,e]cyclooctene	204	C16H12	000262-89-5	89
2		Anthracene, 9-ethenyl-	204	C16H12	002444-68-0	89
3		Anthracene, 9-ethenyl-	204	C16H12	002444-68-0	76
4		Cyclobuta[1'',2'':3,4:3'',4'':3'...	204	C16H12	006574-36-3	76
5		1,9-Dihydropyrene	204	C16H12	028862-02-4	64



Data Path : Z:\SVOASRV\HPCHEM1\BNA N\DATA\BN021020\
 Data File : BN009686.D
 Acq On : 10 Feb 2020 15:36
 Operator : CG/JU
 Sample : L1324-19ME
 Misc :
 ALS Vial : 10 Sample Multiplier: 1

Instrument :
 BNA_N
 ClientSampleID :
 GAT74ME

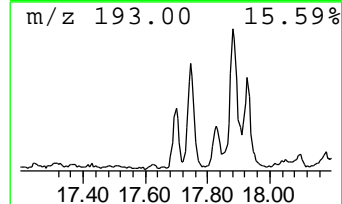
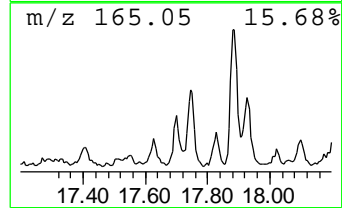
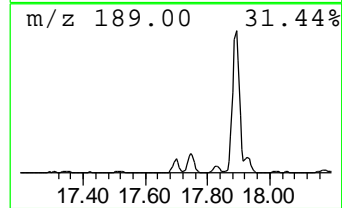
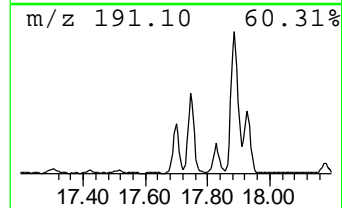
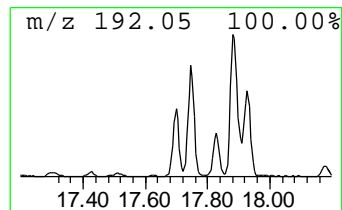
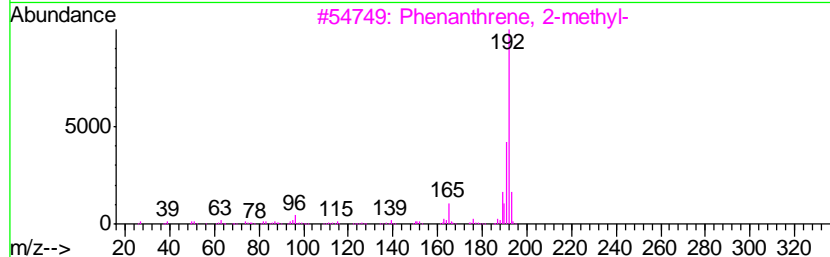
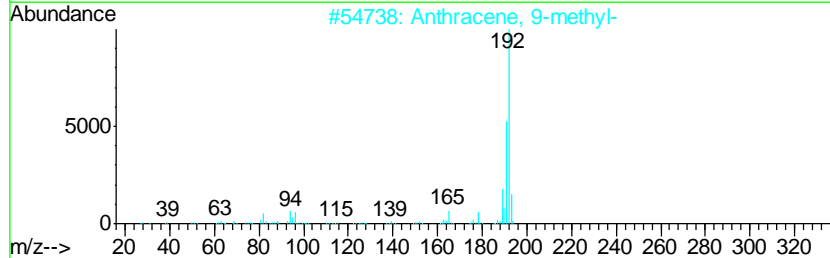
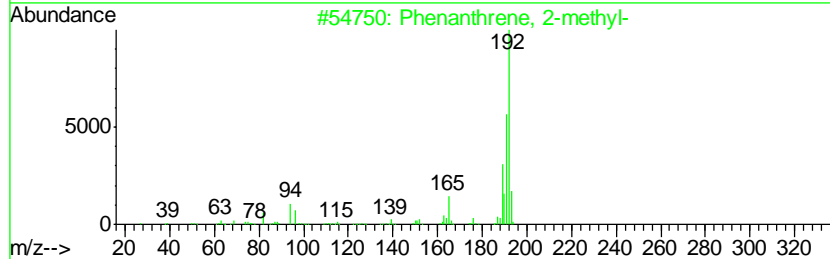
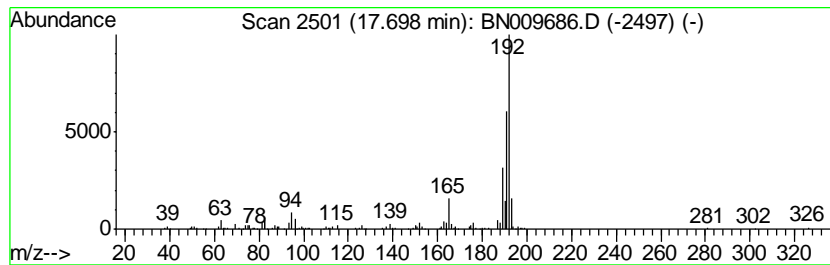
Quant Method : Z:\SVOASRV\HPCHEM1\BNA_N\METHODS\SOM-EPA-BN020320MA.M
 Quant Title : SVOA CALIBRATION

TIC Library : C:\DATABASE\NIST11.L
 TIC Integration Parameters: LSCINT.P

 Peak Number 5 Phenanthrene, 2-methyl- Concentration Rank 18

R.T.	EstConc	Area	Relative to ISTD	R.T.
17.70	3.59 ng/ul	331906	Phenanthrene-d10	16.82

Hit#	of	Tentative ID	MW	MolForm	CAS#	Qual
1	5	Phenanthrene, 2-methyl-	192	C15H12	002531-84-2	95
2		Anthracene, 9-methyl-	192	C15H12	000779-02-2	95
3		Phenanthrene, 2-methyl-	192	C15H12	002531-84-2	94
4		Phenanthrene, 1-methyl-	192	C15H12	000832-69-9	94
5		Phenanthrene, 1-methyl-	192	C15H12	000832-69-9	94



Data Path : Z:\SVOASRV\HPCHEM1\BNA N\DATA\BN021020\
 Data File : BN009686.D
 Acq On : 10 Feb 2020 15:36
 Operator : CG/JU
 Sample : L1324-19ME
 Misc :
 ALS Vial : 10 Sample Multiplier: 1

Instrument :
 BNA_N
 ClientSampled :
 GAT74ME

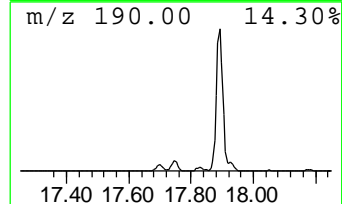
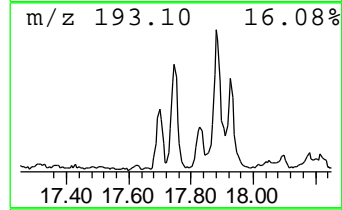
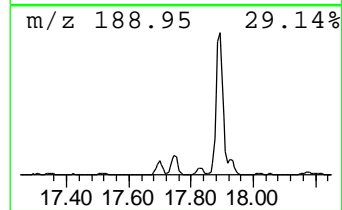
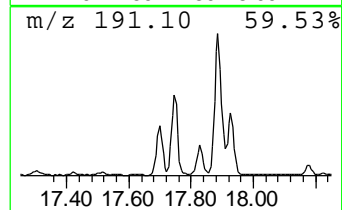
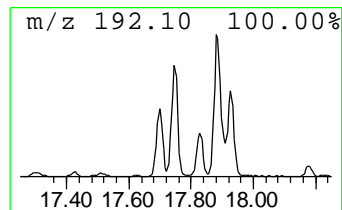
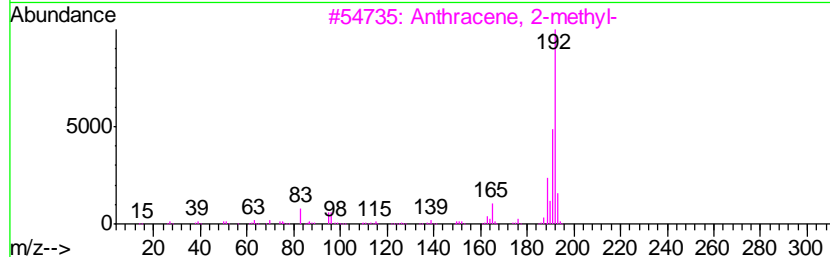
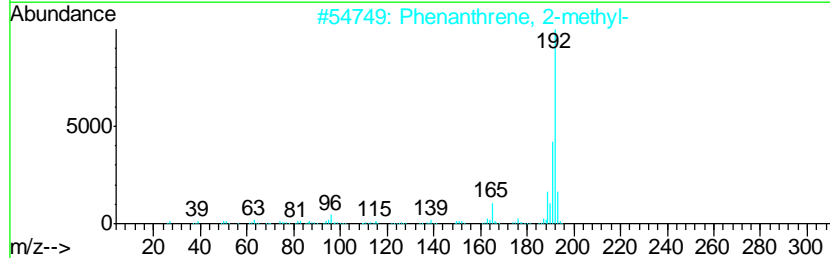
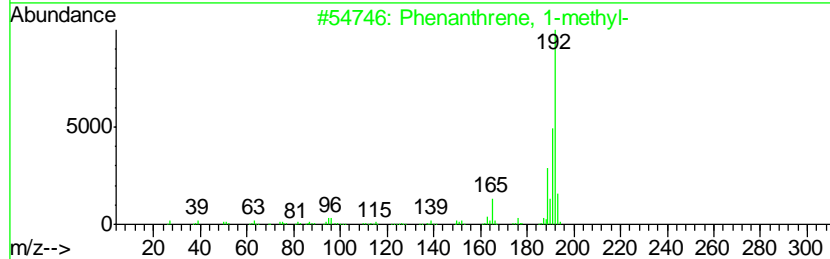
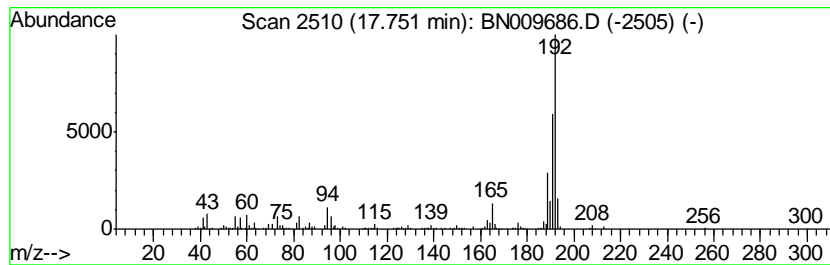
Quant Method : Z:\SVOASRV\HPCHEM1\BNA_N\METHODS\SOM-EPA-BN020320MA.M
 Quant Title : SVOA CALIBRATION

TIC Library : C:\DATABASE\NIST11.L
 TIC Integration Parameters: LSCINT.P

 Peak Number 6 Phenanthrene, 1-methyl- Concentration Rank 9

R.T.	EstConc	Area	Relative to ISTD	R.T.
17.75	6.56 ng/ul	607347	Phenanthrene-d10	16.82

Hit#	of	Tentative ID	MW	MolForm	CAS#	Qual
1	5	Phenanthrene, 1-methyl-	192	C15H12	000832-69-9	97
2		Phenanthrene, 2-methyl-	192	C15H12	002531-84-2	97
3		Anthracene, 2-methyl-	192	C15H12	000613-12-7	96
4		Phenanthrene, 2-methyl-	192	C15H12	002531-84-2	96
5		Phenanthrene, 2-methyl-	192	C15H12	002531-84-2	95



Data Path : Z:\SVOASRV\HPCHEM1\BNA N\DATA\BN021020\
 Data File : BN009686.D
 Acq On : 10 Feb 2020 15:36
 Operator : CG/JU
 Sample : L1324-19ME
 Misc :
 ALS Vial : 10 Sample Multiplier: 1

Instrument :
 BNA_N
 ClientSampleID :
 GAT74ME

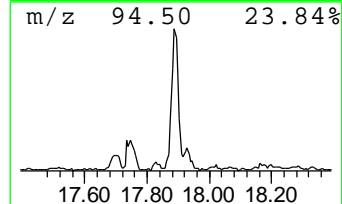
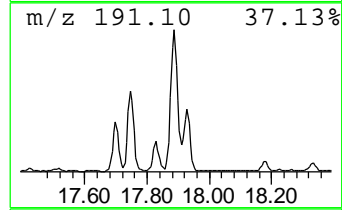
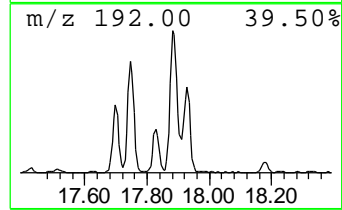
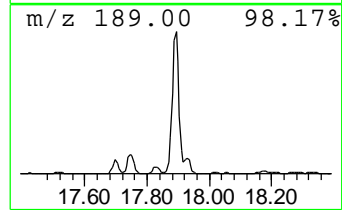
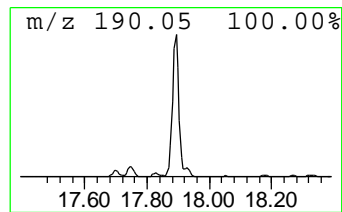
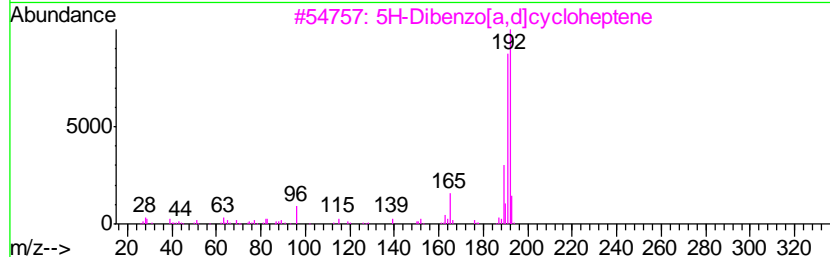
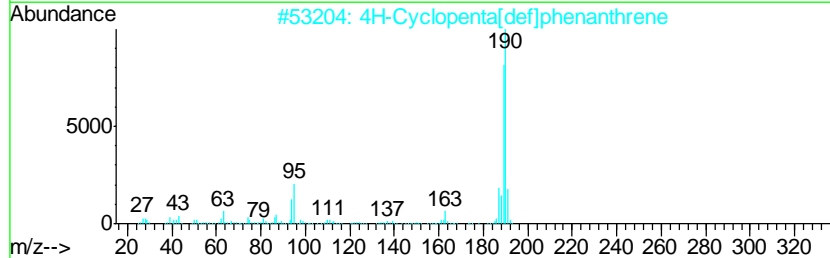
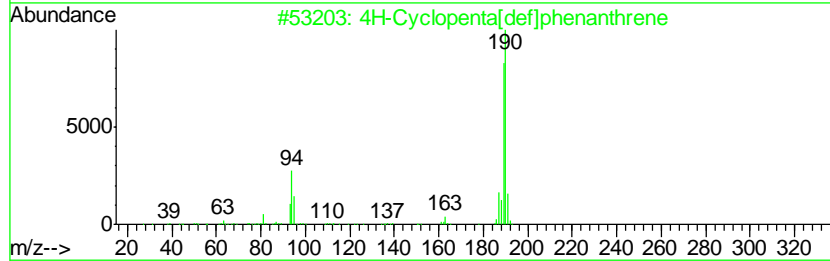
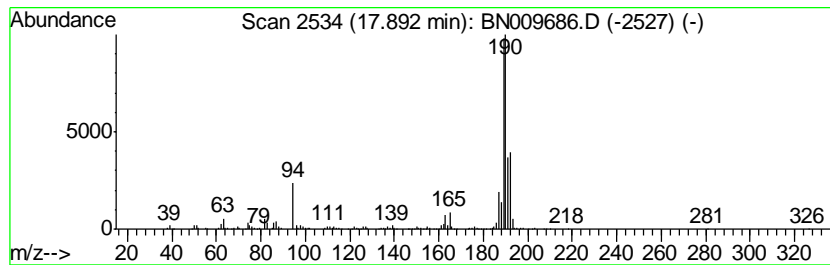
Quant Method : Z:\SVOASRV\HPCHEM1\BNA_N\METHODS\SOM-EPA-BN020320MA.M
 Quant Title : SVOA CALIBRATION

TIC Library : C:\DATABASE\NIST11.L
 TIC Integration Parameters: LSCINT.P

 Peak Number 7 4H-Cyclopenta[def]phenanthrene Concentration Rank 1

R.T.	EstConc	Area	Relative to ISTD	R.T.
17.89	18.95 ng/ul	1752720	Phenanthrene-d10	16.82

Hit#	of	Tentative ID	MW	MolForm	CAS#	Qual
1	5	4H-Cyclopenta[def]phenanthrene	190	C15H10	000203-64-5	70
2		4H-Cyclopenta[def]phenanthrene	190	C15H10	000203-64-5	55
3		5H-Dibenzo[a,d]cycloheptene	192	C15H12	000256-81-5	35
4		Benzene, 1,1'-(1,2-propadienyld...	192	C15H12	014251-57-1	25
5		Anthracene, 2-methyl-	192	C15H12	000613-12-7	25



Data Path : Z:\SVOASRV\HPCHEM1\BNA N\DATA\BN021020\
 Data File : BN009686.D
 Acq On : 10 Feb 2020 15:36
 Operator : CG/JU
 Sample : L1324-19ME
 Misc :
 ALS Vial : 10 Sample Multiplier: 1

Instrument :
 BNA_N
 ClientSampleID :
 GAT74ME

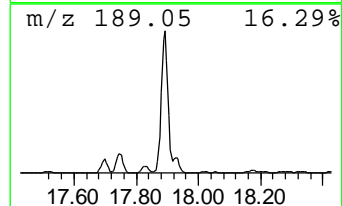
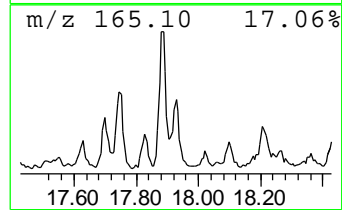
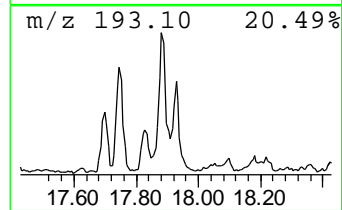
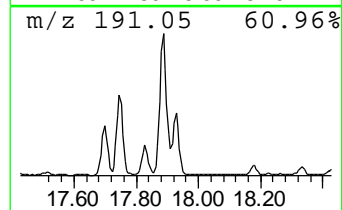
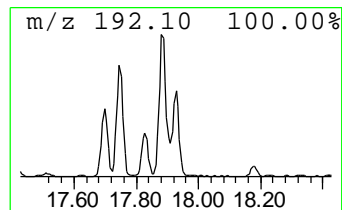
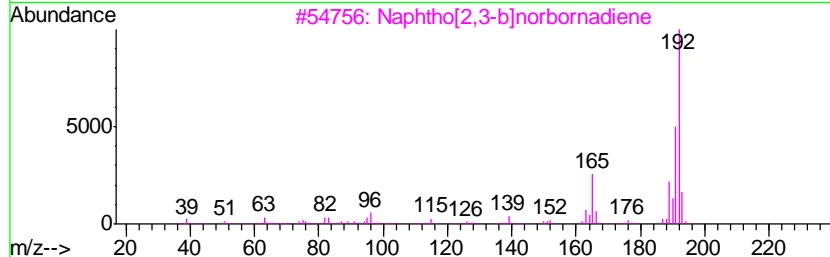
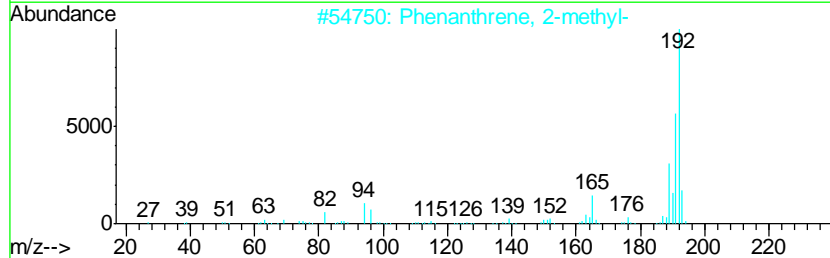
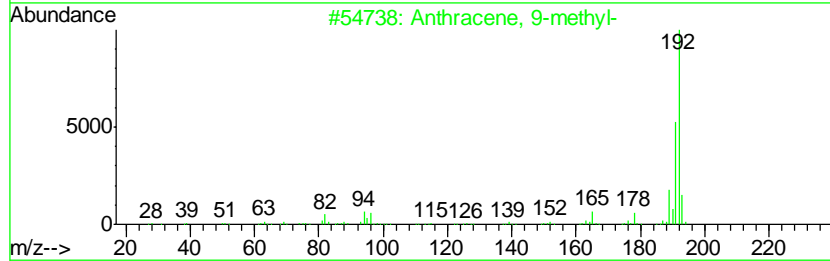
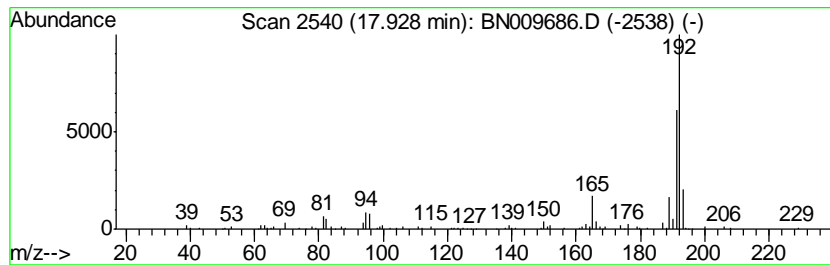
Quant Method : Z:\SVOASRV\HPCHEM1\BNA_N\METHODS\SOM-EPA-BN020320MA.M
 Quant Title : SVOA CALIBRATION

TIC Library : C:\DATABASE\NIST11.L
 TIC Integration Parameters: LSCINT.P

 Peak Number 8 Anthracene, 9-methyl- Concentration Rank 16

R.T.	EstConc	Area	Relative to ISTD	R.T.
17.93	3.96 ng/ul	366224	Phenanthrene-d10	16.82

Hit#	of	Tentative ID	MW	MolForm	CAS#	Qual
1	5	Anthracene, 9-methyl-	192	C15H12	000779-02-2	87
2		Phenanthrene, 2-methyl-	192	C15H12	002531-84-2	87
3		Naphtho[2,3-b]norbornadiene	192	C15H12	107426-38-0	87
4		1H-Indene, 2-phenyl-	192	C15H12	004505-48-0	87
5		Phenanthrene, 1-methyl-	192	C15H12	000832-69-9	83



Data Path : Z:\SVOASRV\HPCHEM1\BNA N\DATA\BN021020\
 Data File : BN009686.D
 Acq On : 10 Feb 2020 15:36
 Operator : CG/JU
 Sample : L1324-19ME
 Misc :
 ALS Vial : 10 Sample Multiplier: 1

Instrument :
 BNA_N
 ClientSampled :
 GAT74ME

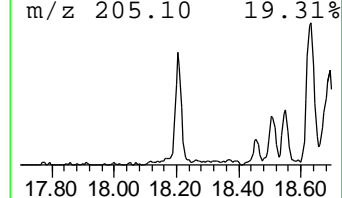
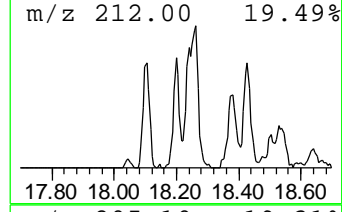
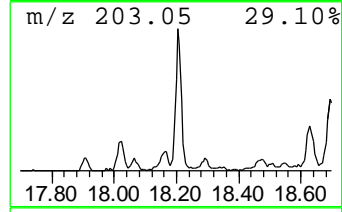
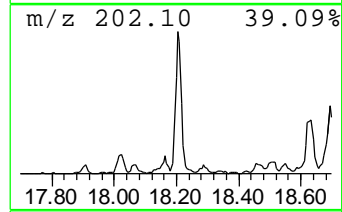
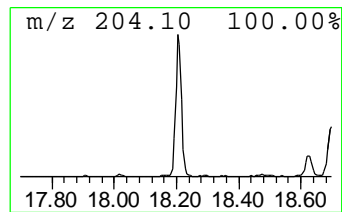
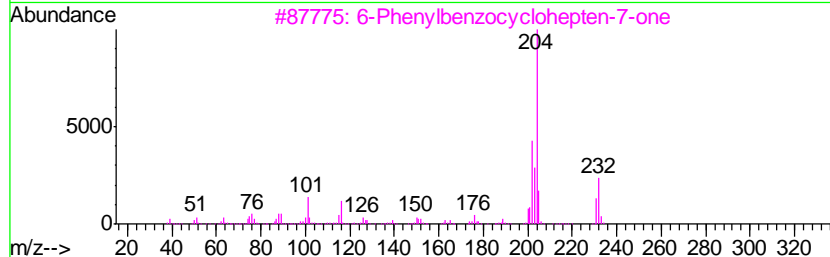
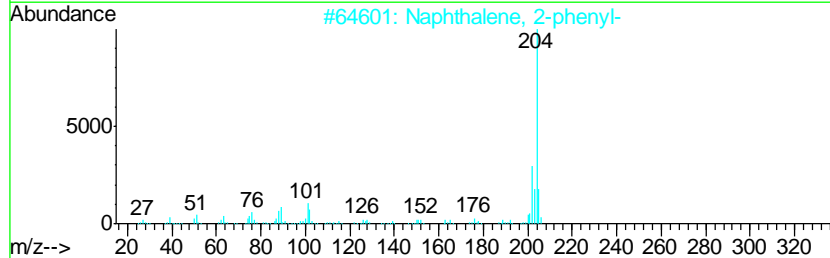
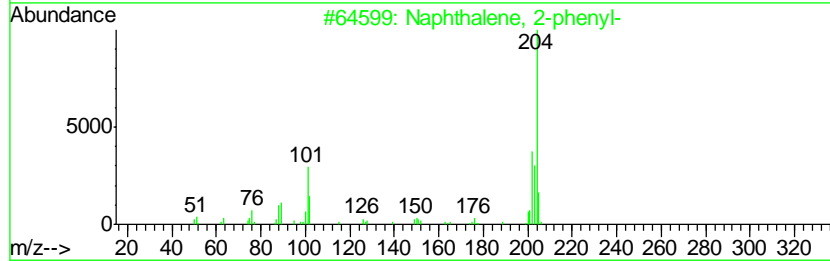
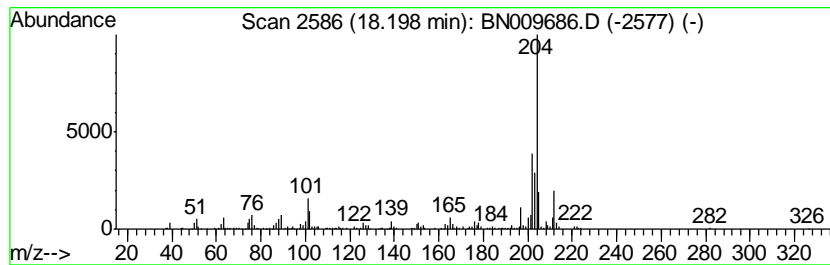
Quant Method : Z:\SVOASRV\HPCHEM1\BNA_N\METHODS\SOM-EPA-BN020320MA.M
 Quant Title : SVOA CALIBRATION

TIC Library : C:\DATABASE\NIST11.L
 TIC Integration Parameters: LSCINT.P

 Peak Number 9 Naphthalene, 2-phenyl- Concentration Rank 6

R.T.	EstConc	Area	Relative to ISTD	R.T.
18.20	7.22 ng/ul	668220	Phenanthrene-d10	16.82

Hit#	of	Tentative ID	MW	MolForm	CAS#	Qual
1	5	Naphthalene, 2-phenyl-	204	C16H12	000612-94-2	89
2		Naphthalene, 2-phenyl-	204	C16H12	000612-94-2	83
3		6-Phenylbenzocyclohepten-7-one	232	C17H12O	093327-56-1	80
4		5,16[1',2'] : 8,13[1',2']-Dibenz...	408	C32H24	005672-97-9	72
5		Naphthalene, 2-phenyl-	204	C16H12	000612-94-2	64



Data Path : Z:\SVOASRV\HPCHEM1\BNA N\DATA\BN021020\
 Data File : BN009686.D
 Acq On : 10 Feb 2020 15:36
 Operator : CG/JU
 Sample : L1324-19ME
 Misc :
 ALS Vial : 10 Sample Multiplier: 1

Instrument :
 BNA_N
 ClientSampled :
 GAT74ME

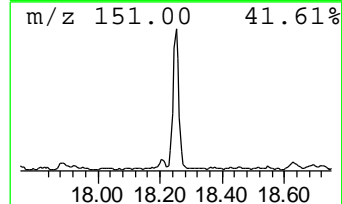
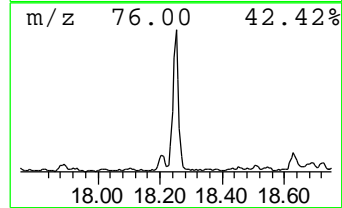
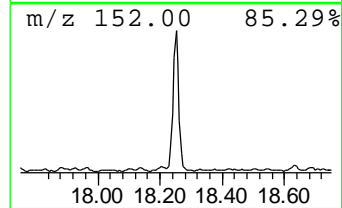
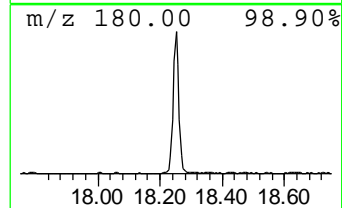
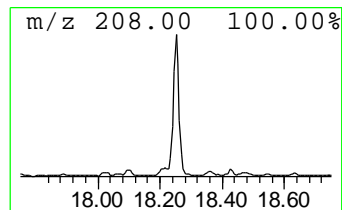
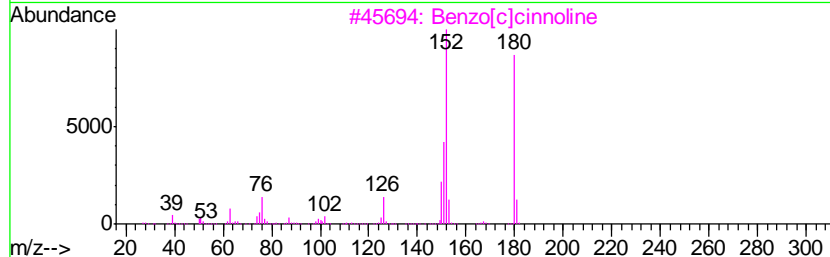
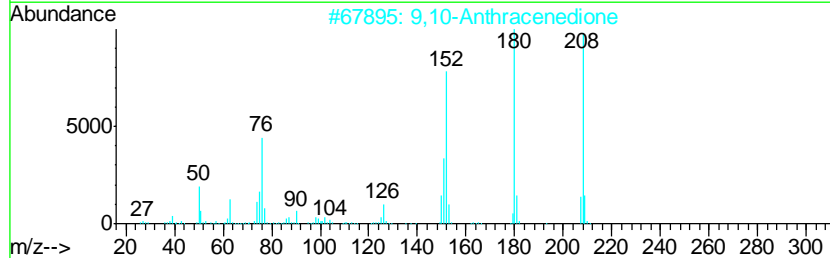
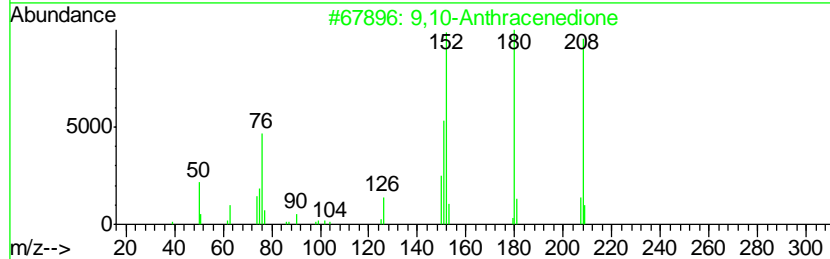
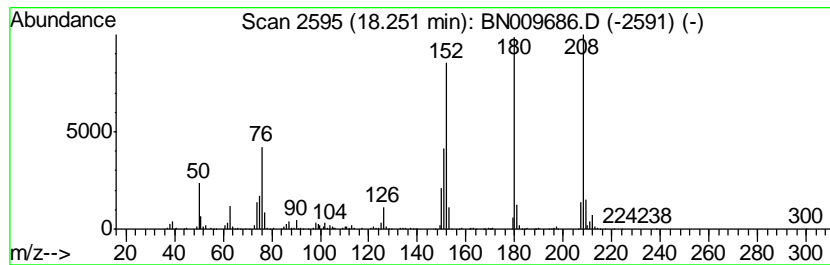
Quant Method : Z:\SVOASRV\HPCHEM1\BNA_N\METHODS\SOM-EPA-BN020320MA.M
 Quant Title : SVOA CALIBRATION

TIC Library : C:\DATABASE\NIST11.L
 TIC Integration Parameters: LSCINT.P

 Peak Number 10 9,10-Anthracenedione Concentration Rank 3

R.T.	EstConc	Area	Relative to ISTD	R.T.
18.25	11.56 ng/ul	1069550	Phenanthrene-d10	16.82

Hit#	of	Tentative ID	MW	MolForm	CAS#	Qual
1	5	9,10-Anthracenedione	208	C14H8O2	000084-65-1	99
2		9,10-Anthracenedione	208	C14H8O2	000084-65-1	97
3		Benzo[c]cinnoline	180	C12H8N2	000230-17-1	95
4		9,10-Anthracenedione	208	C14H8O2	000084-65-1	95
5		Benzo[c]cinnoline	180	C12H8N2	000230-17-1	91



Data Path : Z:\SVOASRV\HPCHEM1\BNA N\DATA\BN021020\
 Data File : BN009686.D
 Acq On : 10 Feb 2020 15:36
 Operator : CG/JU
 Sample : L1324-19ME
 Misc :
 ALS Vial : 10 Sample Multiplier: 1

Instrument :
 BNA_N
 ClientSampleID :
 GAT74ME

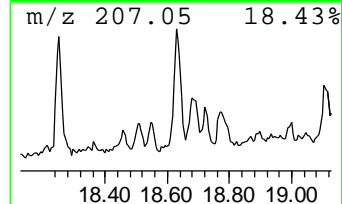
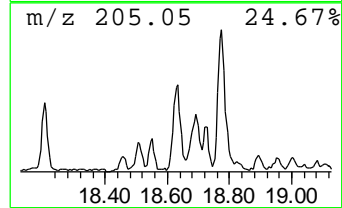
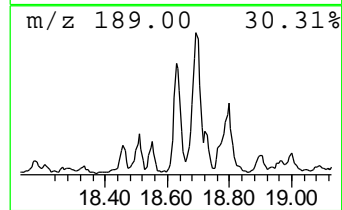
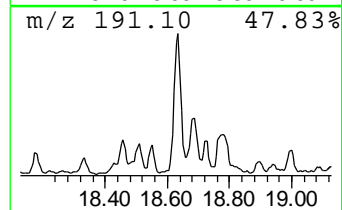
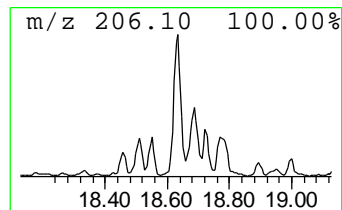
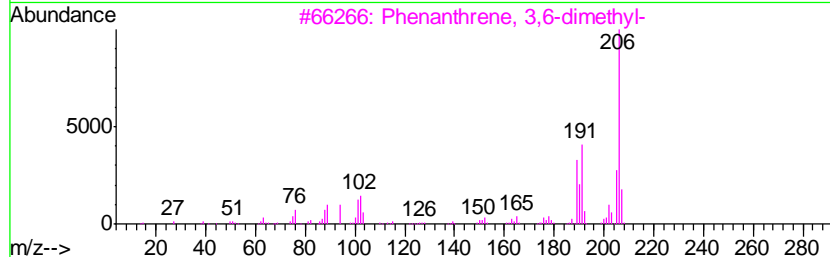
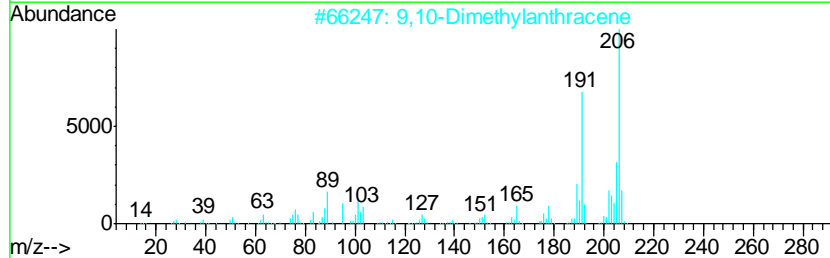
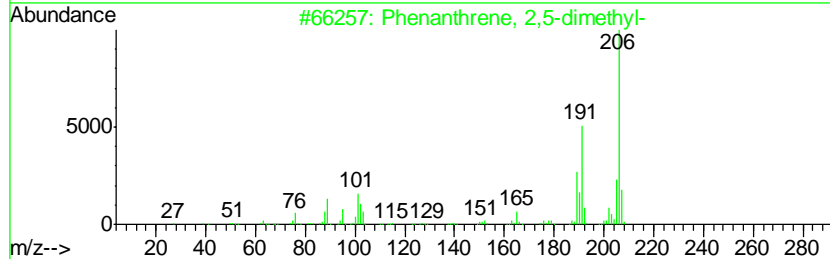
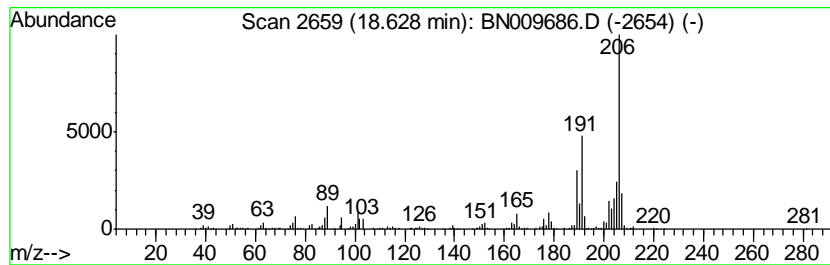
Quant Method : Z:\SVOASRV\HPCHEM1\BNA_N\METHODS\SOM-EPA-BN020320MA.M
 Quant Title : SVOA CALIBRATION

TIC Library : C:\DATABASE\NIST11.L
 TIC Integration Parameters: LSCINT.P

 Peak Number 11 Phenanthrene, 2,5-dimethyl- Concentration Rank 4

R.T.	EstConc	Area	Relative to ISTD	R.T.
18.63	7.96 ng/ul	736331	Phenanthrene-d10	16.82

Hit#	of	Tentative ID	MW	MolForm	CAS#	Qual
1	5	Phenanthrene, 2,5-dimethyl-	206	C16H14	003674-66-6	96
2		9,10-Dimethylantracene	206	C16H14	000781-43-1	96
3		Phenanthrene, 3,6-dimethyl-	206	C16H14	001576-67-6	90
4		9,10-Dimethylantracene	206	C16H14	000781-43-1	90
5		[14]Annulene, 1,6:8,13-bis(metha...	206	C16H14	085385-68-8	87



Data Path : Z:\SVOASRV\HPCHEM1\BNA N\DATA\BN021020\
 Data File : BN009686.D
 Acq On : 10 Feb 2020 15:36
 Operator : CG/JU
 Sample : L1324-19ME
 Misc :
 ALS Vial : 10 Sample Multiplier: 1

Instrument :
 BNA_N
 ClientSampled :
 GAT74ME

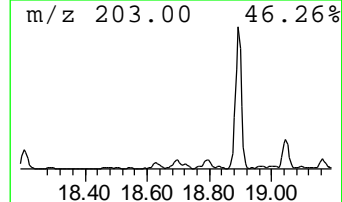
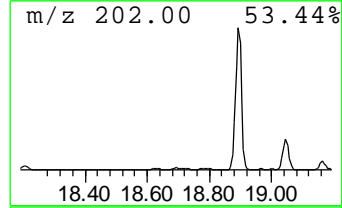
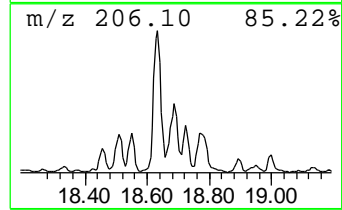
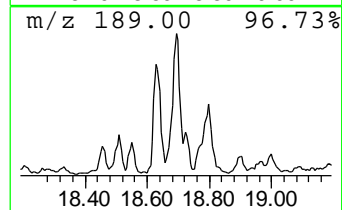
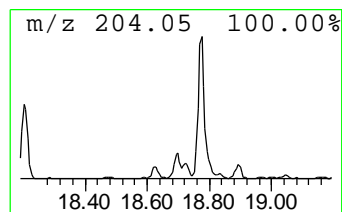
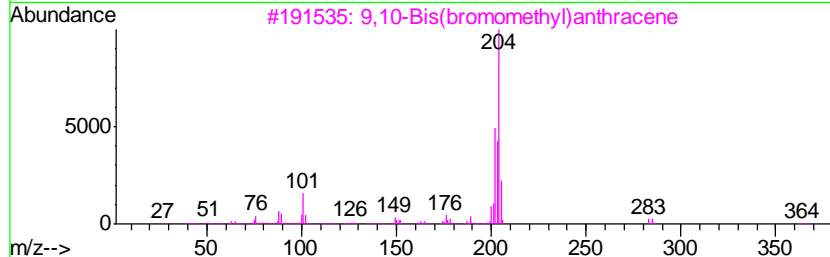
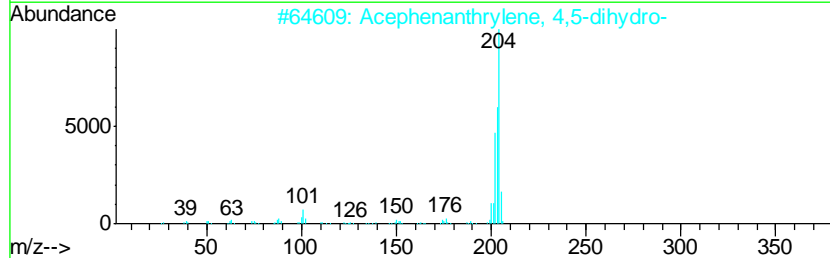
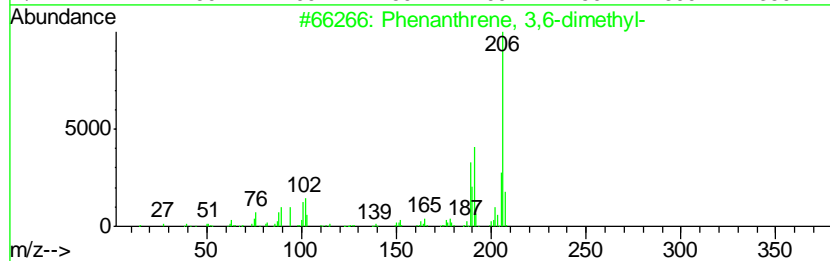
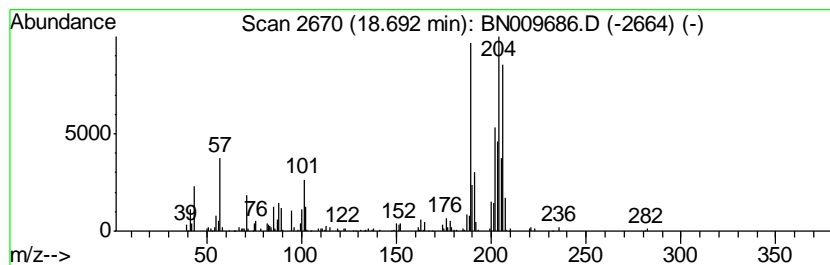
Quant Method : Z:\SVOASRV\HPCHEM1\BNA_N\METHODS\SOM-EPA-BN020320MA.M
 Quant Title : SVOA CALIBRATION

TIC Library : C:\DATABASE\NIST11.L
 TIC Integration Parameters: LSCINT.P

 Peak Number 12 unknown-01 Concentration Rank 11

R.T.	EstConc	Area	Relative to ISTD	R.T.
18.69	5.43 ng/ul	502772	Phenanthrene-d10	16.82

Hit#	of	Tentative ID	MW	MolForm	CAS#	Qual
1	5	Phenanthrene, 3,6-dimethyl-	206	C16H14	001576-67-6	42
2		Acephenanthrylene, 4,5-dihydro-	204	C16H12	006232-48-0	38
3		9,10-Bis(bromomethyl)anthracene	362	C16H12Br2	034373-96-1	38
4		Pyrene, 4,5,9,10-tetrahydro-	206	C16H14	000781-17-9	38
5		1,3-Butadiene, 1,4-diphenyl-, (E...)	206	C16H14	000538-81-8	38



Data Path : Z:\SVOASRV\HPCHEM1\BNA N\DATA\BN021020\
 Data File : BN009686.D
 Acq On : 10 Feb 2020 15:36
 Operator : CG/JU
 Sample : L1324-19ME
 Misc :
 ALS Vial : 10 Sample Multiplier: 1

Instrument :
 BNA_N
 ClientSampleId :
 GAT74ME

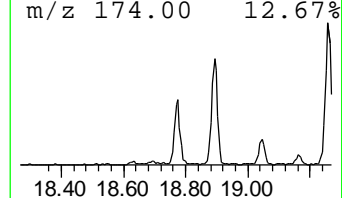
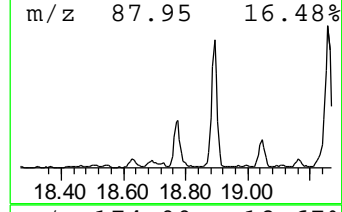
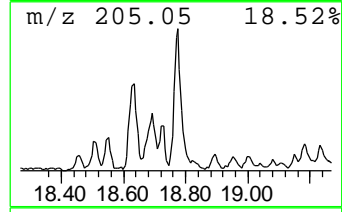
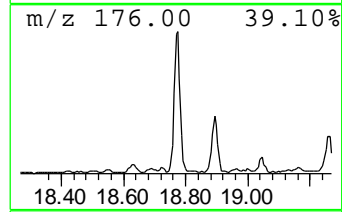
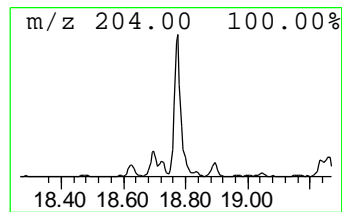
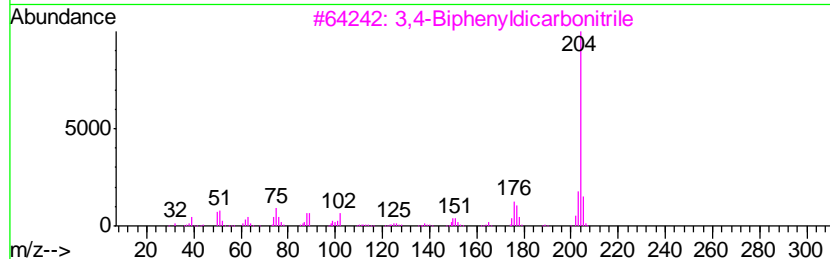
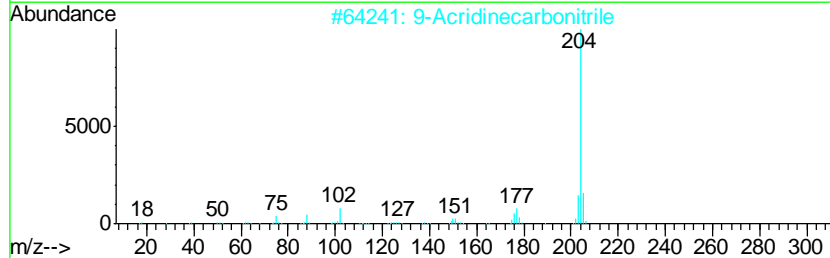
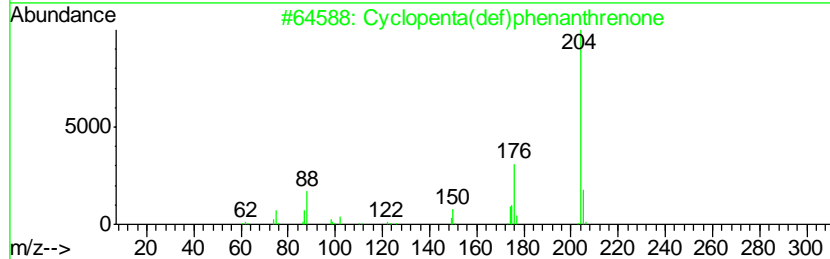
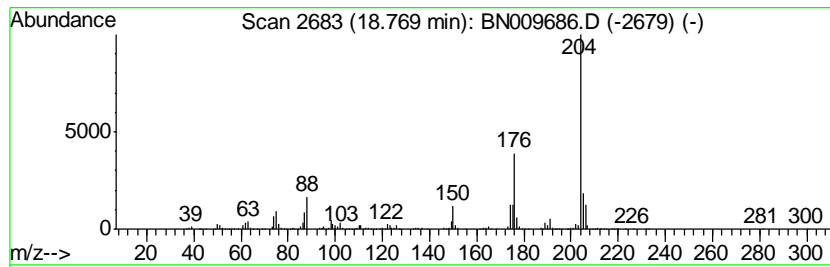
Quant Method : Z:\SVOASRV\HPCHEM1\BNA_N\METHODS\SOM-EPA-BN020320MA.M
 Quant Title : SVOA CALIBRATION

TIC Library : C:\DATABASE\NIST11.L
 TIC Integration Parameters: LSCINT.P

 Peak Number 13 Cyclopenta(def)phenanthrenone Concentration Rank 2

R.T.	EstConc	Area	Relative to ISTD	R.T.
18.77	12.64 ng/ul	1169280	Phenanthrene-d10	16.82

Hit#	of	Tentative ID	MW	MolForm	CAS#	Qual
1	5	Cyclopenta(def)phenanthrenone	204	C15H8O	005737-13-3	96
2		9-Acridinecarbonitrile	204	C14H8N2	005326-19-2	58
3		3,4-Biphenyldicarbonitrile	204	C14H8N2	004128-63-6	56
4		[1,1'-Biphenyl]-4,4'-dicarbonitrile	204	C14H8N2	001591-30-6	52
5		Tricyclo[8.2.2.2(4,7)]hexadeca-2...	204	C16H12	006572-60-7	52



Data Path : Z:\SVOASRV\HPCHEM1\BNA N\DATA\BN021020\
 Data File : BN009686.D
 Acq On : 10 Feb 2020 15:36
 Operator : CG/JU
 Sample : L1324-19ME
 Misc :
 ALS Vial : 10 Sample Multiplier: 1

Instrument :
 BNA_N
 ClientSampleId :
 GAT74ME

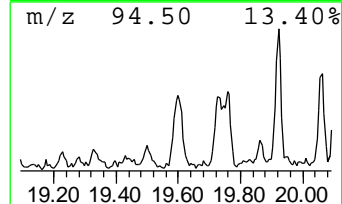
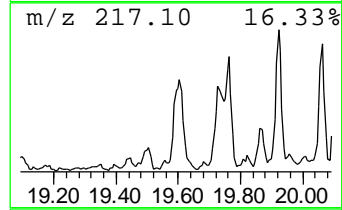
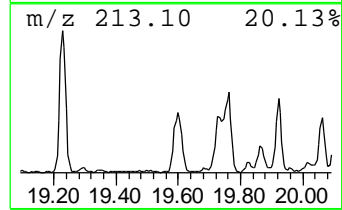
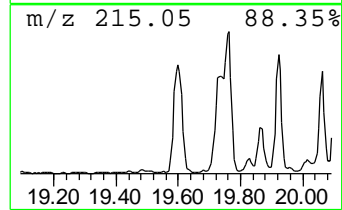
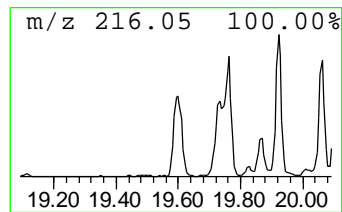
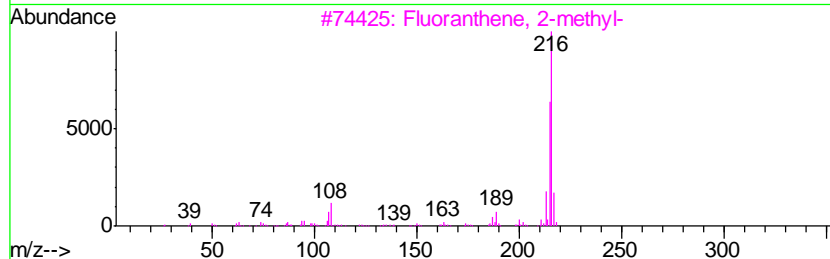
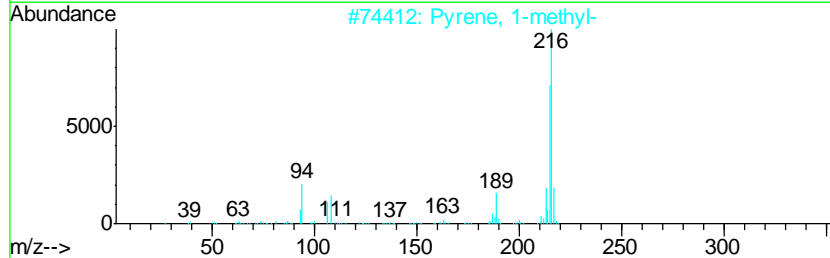
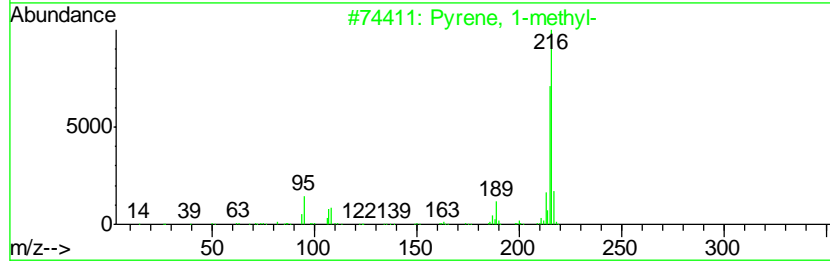
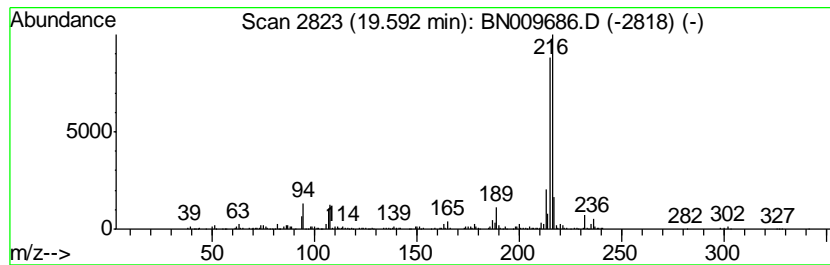
Quant Method : Z:\SVOASRV\HPCHEM1\BNA_N\METHODS\SOM-EPA-BN020320MA.M
 Quant Title : SVOA CALIBRATION

TIC Library : C:\DATABASE\NIST11.L
 TIC Integration Parameters: LSCINT.P

 Peak Number 15 Pyrene, 1-methyl- Concentration Rank 14

R.T.	EstConc	Area	Relative to ISTD	R.T.
19.59	4.11 ng/ul	1036360	Chrysene-d12	21.03

Hit#	of	Tentative ID	MW	MolForm	CAS#	Qual
1	5	Pyrene, 1-methyl-	216	C17H12	002381-21-7	96
2		Pyrene, 1-methyl-	216	C17H12	002381-21-7	96
3		Fluoranthene, 2-methyl-	216	C17H12	033543-31-6	93
4		Fluoranthene, 2-methyl-	216	C17H12	033543-31-6	93
5		Pyrene, 1-methyl-	216	C17H12	002381-21-7	90



Data Path : Z:\SVOASRV\HPCHEM1\BNA N\DATA\BN021020\
 Data File : BN009686.D
 Acq On : 10 Feb 2020 15:36
 Operator : CG/JU
 Sample : L1324-19ME
 Misc :
 ALS Vial : 10 Sample Multiplier: 1

Instrument :
 BNA_N
 ClientSampleID :
 GAT74ME

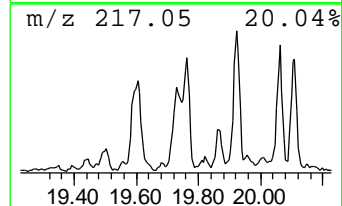
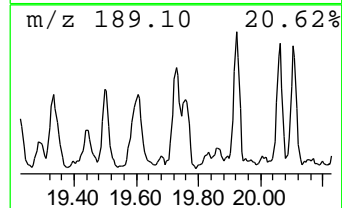
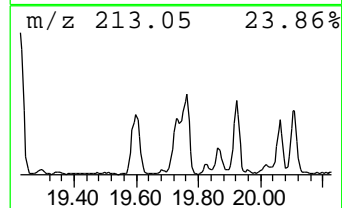
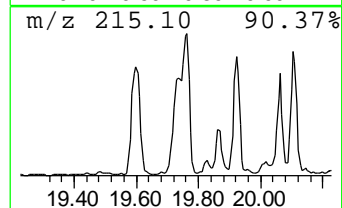
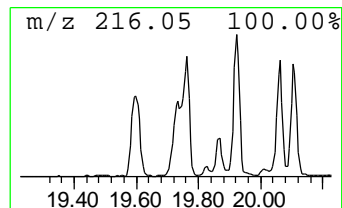
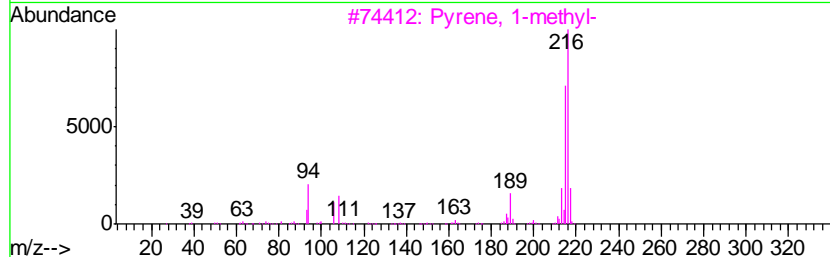
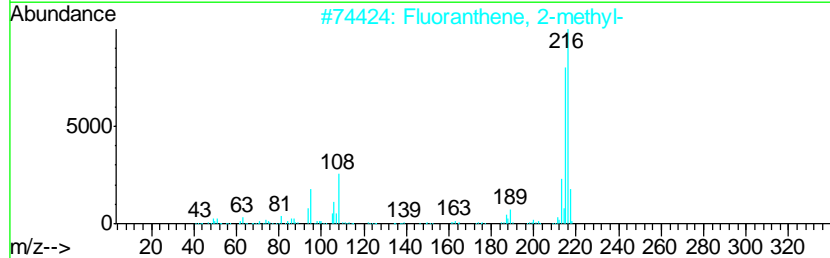
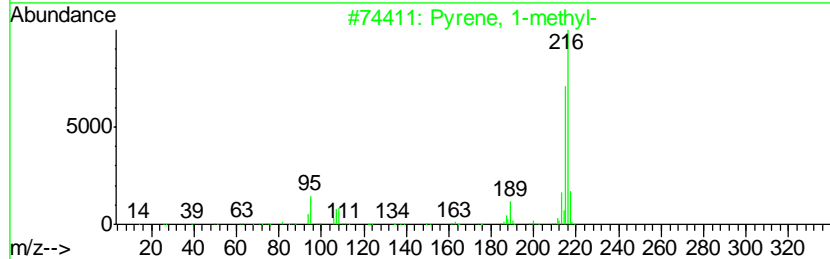
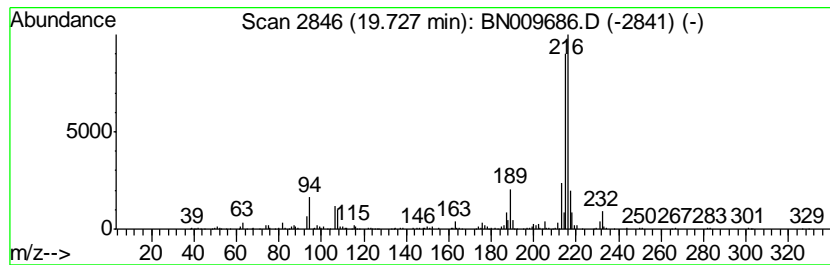
Quant Method : Z:\SVOASRV\HPCHEM1\BNA_N\METHODS\SOM-EPA-BN020320MA.M
 Quant Title : SVOA CALIBRATION

TIC Library : C:\DATABASE\NIST11.L
 TIC Integration Parameters: LSCINT.P

 Peak Number 16 Fluoranthene, 2-methyl- Concentration Rank 24

R.T.	EstConc	Area	Relative to ISTD	R.T.
19.73	2.82 ng/ul	711599	Chrysene-d12	21.03

Hit#	of	Tentative ID	MW	MolForm	CAS#	Qual
1	5	Pyrene, 1-methyl-	216	C17H12	002381-21-7	95
2		Fluoranthene, 2-methyl-	216	C17H12	033543-31-6	94
3		Pyrene, 1-methyl-	216	C17H12	002381-21-7	93
4		Pyrene, 1-methyl-	216	C17H12	002381-21-7	91
5		11H-Benzo[b]fluorene	216	C17H12	000243-17-4	87



Data Path : Z:\SVOASRV\HPCHEM1\BNA N\DATA\BN021020\
 Data File : BN009686.D
 Acq On : 10 Feb 2020 15:36
 Operator : CG/JU
 Sample : L1324-19ME
 Misc :
 ALS Vial : 10 Sample Multiplier: 1

Instrument :
 BNA_N
 ClientSampleID :
 GAT74ME

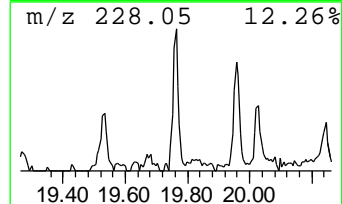
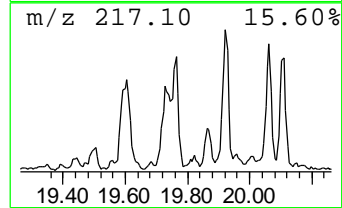
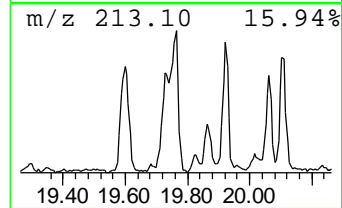
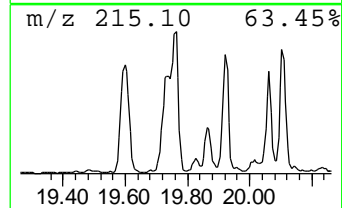
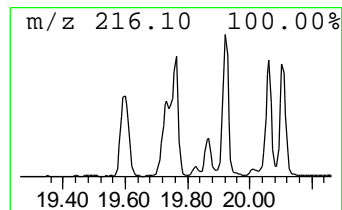
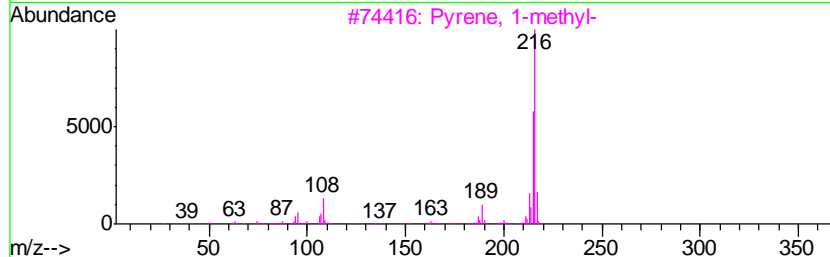
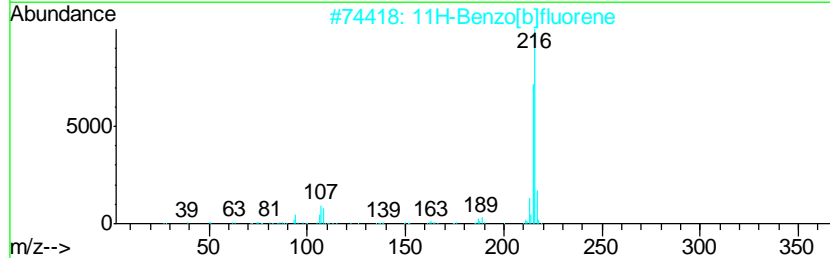
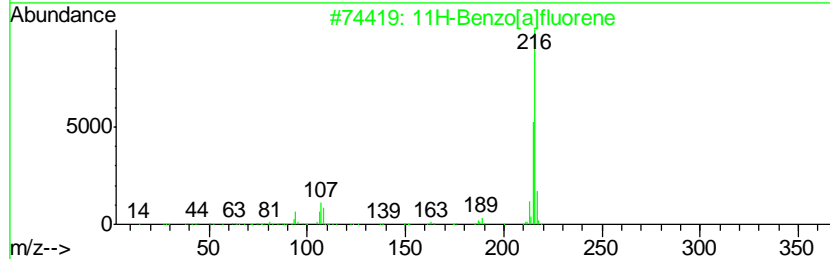
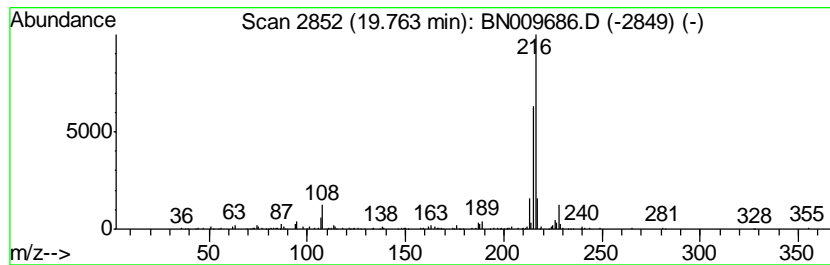
Quant Method : Z:\SVOASRV\HPCHEM1\BNA_N\METHODS\SOM-EPA-BN020320MA.M
 Quant Title : SVOA CALIBRATION

TIC Library : C:\DATABASE\NIST11.L
 TIC Integration Parameters: LSCINT.P

 Peak Number 17 11H-Benzo[a]fluorene Concentration Rank 23

R.T.	EstConc	Area	Relative to ISTD	R.T.
19.76	2.91 ng/ul	732425	Chrysene-d12	21.03

Hit#	of	Tentative ID	MW	MolForm	CAS#	Qual
1	5	11H-Benzo[a]fluorene	216	C17H12	000238-84-6	93
2		11H-Benzo[b]fluorene	216	C17H12	000243-17-4	93
3		Pyrene, 1-methyl-	216	C17H12	002381-21-7	83
4		11H-Benzo[a]fluorene	216	C17H12	000238-84-6	83
5		Fluoranthene, 2-methyl-	216	C17H12	033543-31-6	74



Data Path : Z:\SVOASRV\HPCHEM1\BNA N\DATA\BN021020\
 Data File : BN009686.D
 Acq On : 10 Feb 2020 15:36
 Operator : CG/JU
 Sample : L1324-19ME
 Misc :
 ALS Vial : 10 Sample Multiplier: 1

Instrument :
 BNA_N
 ClientSampleID :
 GAT74ME

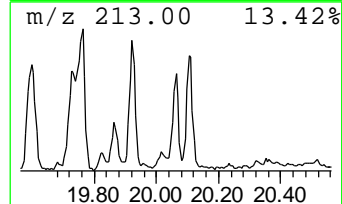
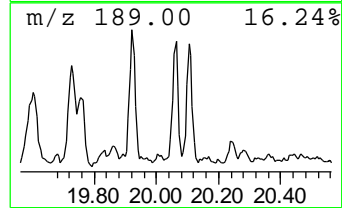
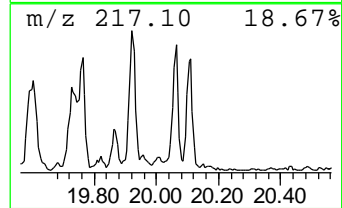
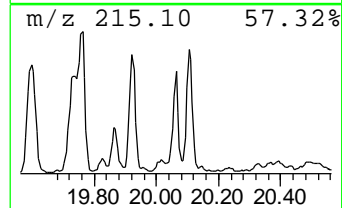
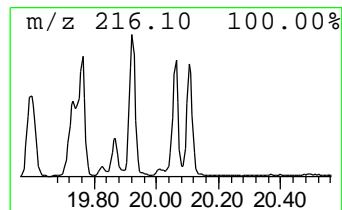
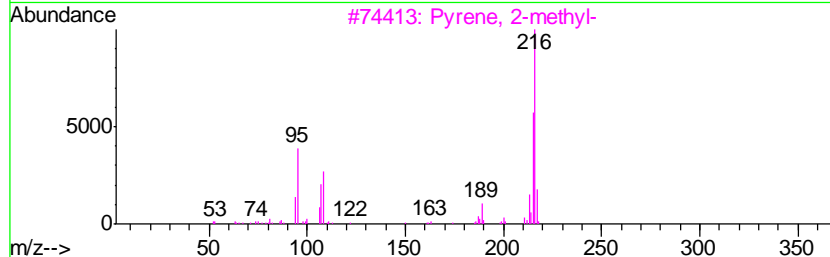
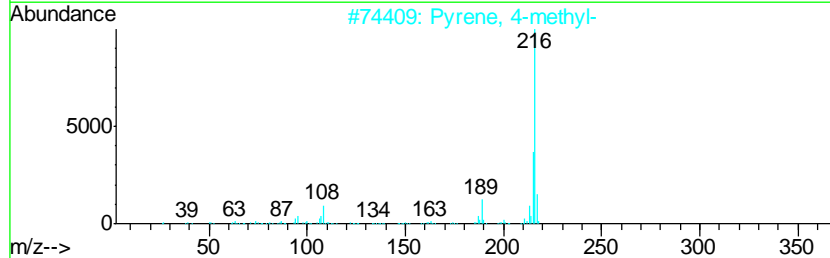
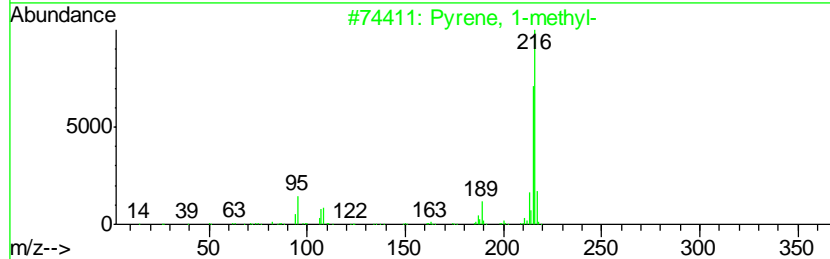
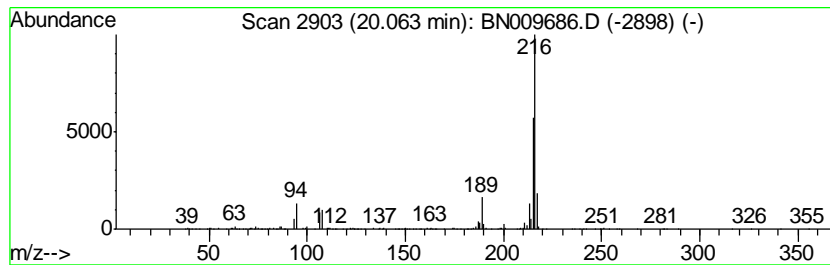
Quant Method : Z:\SVOASRV\HPCHEM1\BNA_N\METHODS\SOM-EPA-BN020320MA.M
 Quant Title : SVOA CALIBRATION

TIC Library : C:\DATABASE\NIST11.L
 TIC Integration Parameters: LSCINT.P

 Peak Number 19 Pyrene, 4-methyl- Concentration Rank 30

R.T.	EstConc	Area	Relative to ISTD	R.T.
20.06	2.28 ng/ul	575276	Chrysene-d12	21.03

Hit#	of	Tentative ID	MW	MolForm	CAS#	Qual
1	5	Pyrene, 1-methyl-	216	C17H12	002381-21-7	96
2		Pyrene, 4-methyl-	216	C17H12	003353-12-6	95
3		Pyrene, 2-methyl-	216	C17H12	003442-78-2	94
4		Pyrene, 1-methyl-	216	C17H12	002381-21-7	93
5		11H-Benzo[a]fluorene	216	C17H12	000238-84-6	91



Data Path : Z:\SVOASRV\HPCHEM1\BNA N\DATA\BN021020\
 Data File : BN009686.D
 Acq On : 10 Feb 2020 15:36
 Operator : CG/JU
 Sample : L1324-19ME
 Misc :
 ALS Vial : 10 Sample Multiplier: 1

Instrument :
 BNA_N
 ClientSampleId :
 GAT74ME

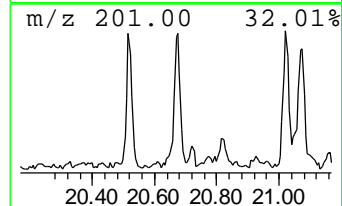
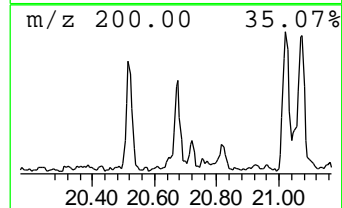
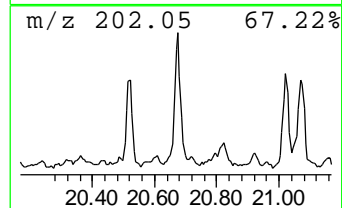
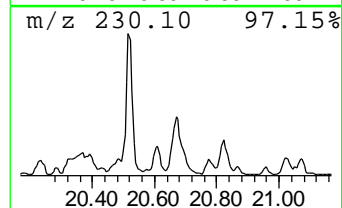
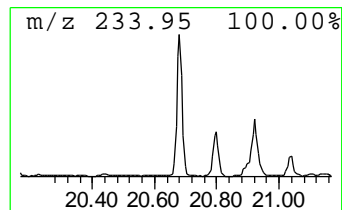
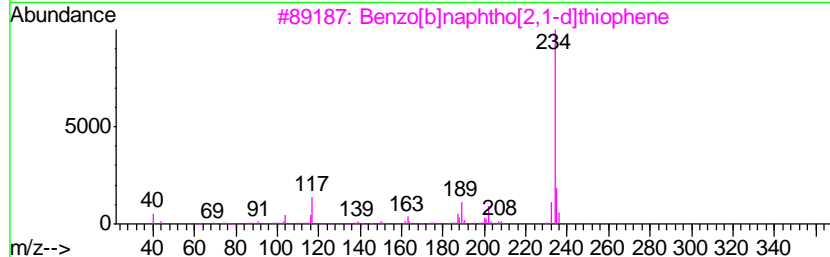
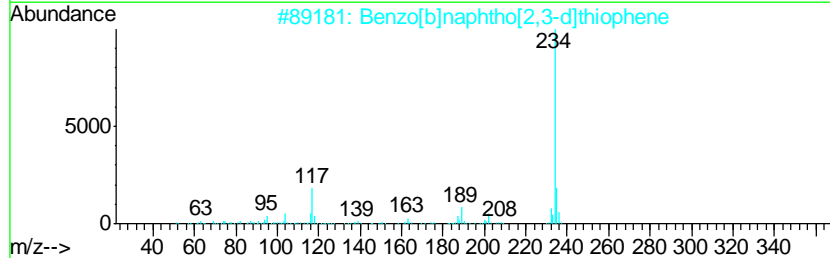
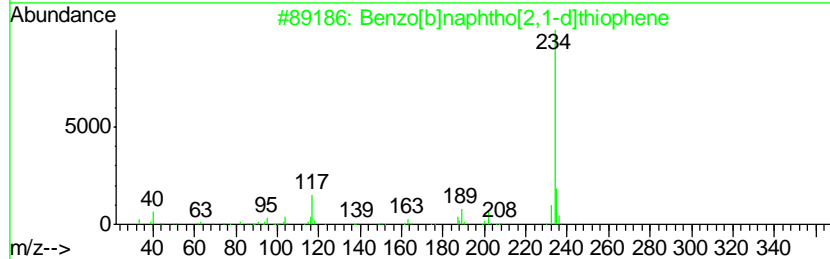
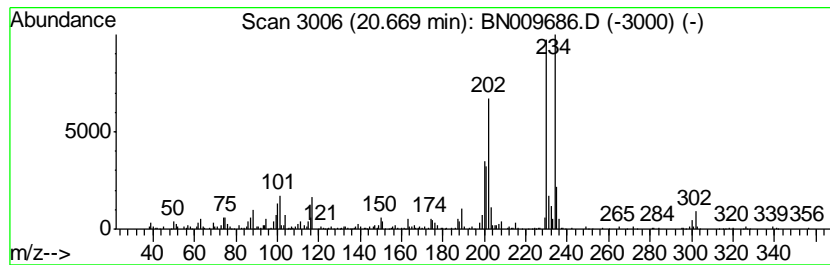
Quant Method : Z:\SVOASRV\HPCHEM1\BNA_N\METHODS\SOM-EPA-BN020320MA.M
 Quant Title : SVOA CALIBRATION

TIC Library : C:\DATABASE\NIST11.L
 TIC Integration Parameters: LSCINT.P

 Peak Number 21 Benzo[b]naphtho[2,1-d]thiop... Concentration Rank 21

R.T.	EstConc	Area	Relative to ISTD	R.T.
20.67	2.97 ng/ul	749241	Chrysene-d12	21.03

Hit#	of	Tentative ID	MW	MolForm	CAS#	Qual
1	5	Benzo[b]naphtho[2,1-d]thiophene	234	C16H10S	000239-35-0	92
2		Benzo[b]naphtho[2,3-d]thiophene	234	C16H10S	000243-46-9	86
3		Benzo[b]naphtho[2,1-d]thiophene	234	C16H10S	000239-35-0	78
4		Benzo[b]naphtho[2,1-d]thiophene	234	C16H10S	000239-35-0	70
5		Benzo[b]naphtho[2,3-d]thiophene	234	C16H10S	000243-46-9	70



Data Path : Z:\SVOASRV\HPCHEM1\BNA N\DATA\BN021020\
 Data File : BN009686.D
 Acq On : 10 Feb 2020 15:36
 Operator : CG/JU
 Sample : L1324-19ME
 Misc :
 ALS Vial : 10 Sample Multiplier: 1

Instrument :
 BNA_N
 ClientSampleID :
 GAT74ME

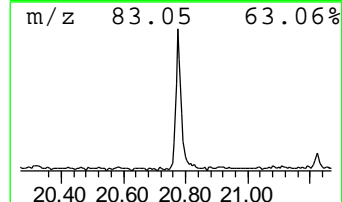
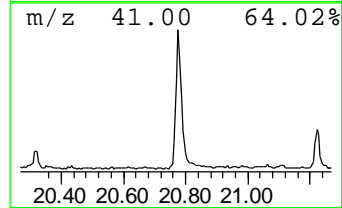
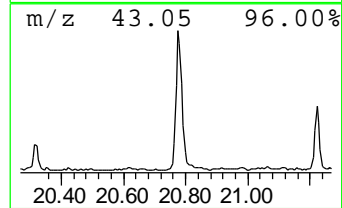
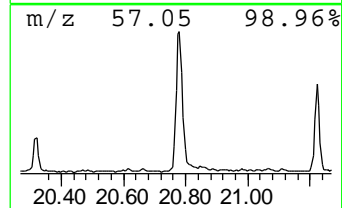
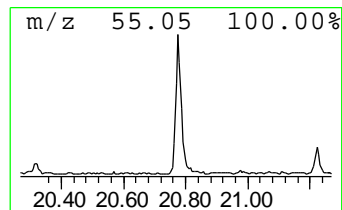
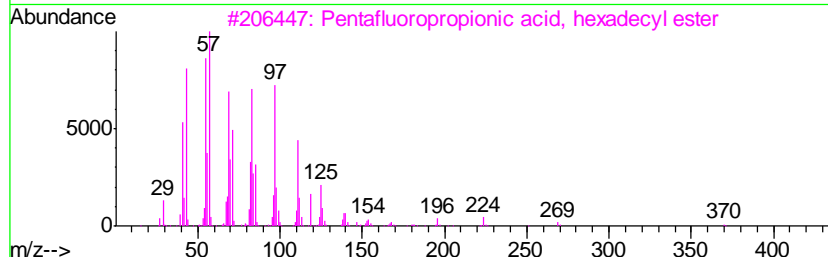
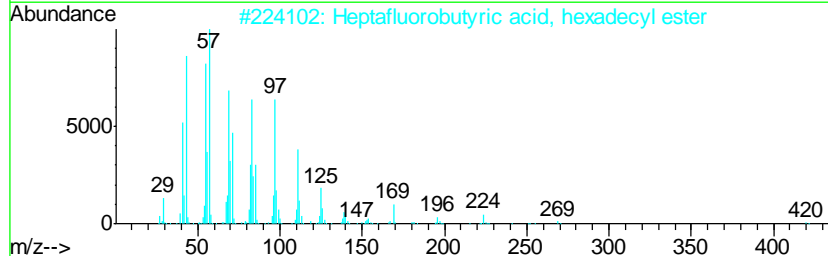
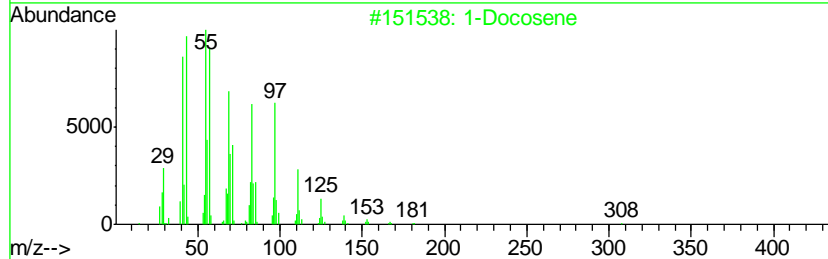
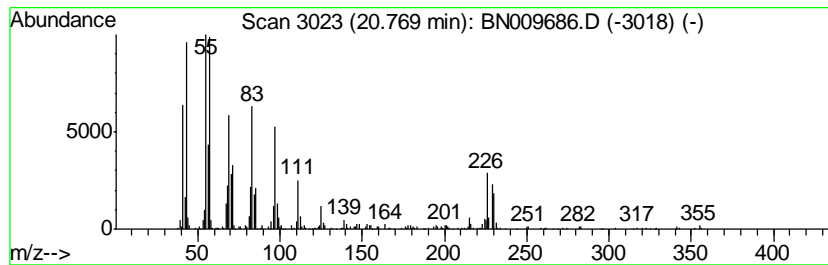
Quant Method : Z:\SVOASRV\HPCHEM1\BNA_N\METHODS\SOM-EPA-BN020320MA.M
 Quant Title : SVOA CALIBRATION

TIC Library : C:\DATABASE\NIST11.L
 TIC Integration Parameters: LSCINT.P

 Peak Number 22 (DEL) Alkane: Cyclic20.77 Concentration Rank 12

R.T.	EstConc	Area	Relative to ISTD	R.T.
20.77	4.63 ng/ul	1166940	Chrysene-d12	21.03

Hit#	of	Tentative ID	MW	MolForm	CAS#	Qual
1	5	1-Docosene	308	C22H44	001599-67-3	91
2		Heptafluorobutyric acid, hexadec...	438	C20H33F7O2	006385-15-5	87
3		Pentafluoropropionic acid, hexad...	388	C19H33F5O2	006222-07-7	87
4		Heptadecyl trifluoroacetate	352	C19H35F3O2	1000351-87-0	87
5		Pentafluoropropionic acid, hepta...	402	C20H35F5O2	959218-78-1	87



Data Path : Z:\SVOASRV\HPCHEM1\BNA N\DATA\BN021020\
 Data File : BN009686.D
 Acq On : 10 Feb 2020 15:36
 Operator : CG/JU
 Sample : L1324-19ME
 Misc :
 ALS Vial : 10 Sample Multiplier: 1

Instrument :
 BNA_N
 ClientSampleId :
 GAT74ME

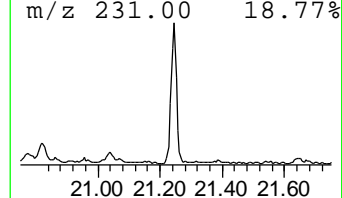
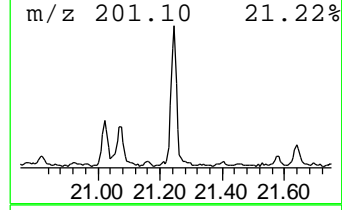
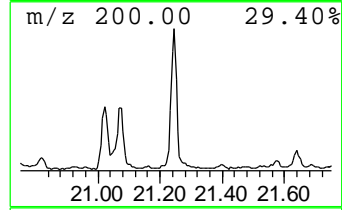
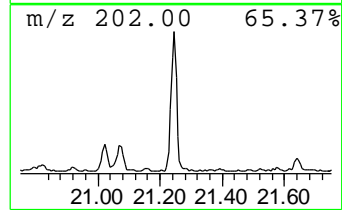
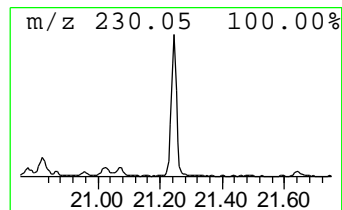
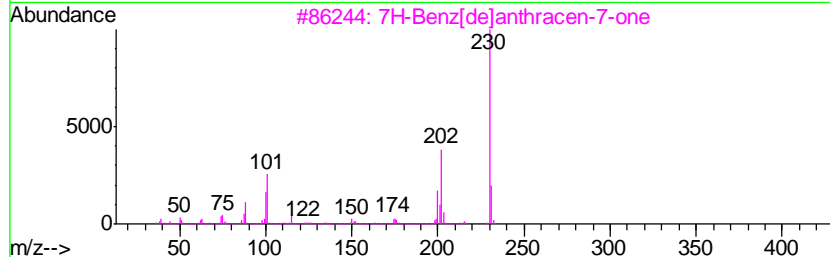
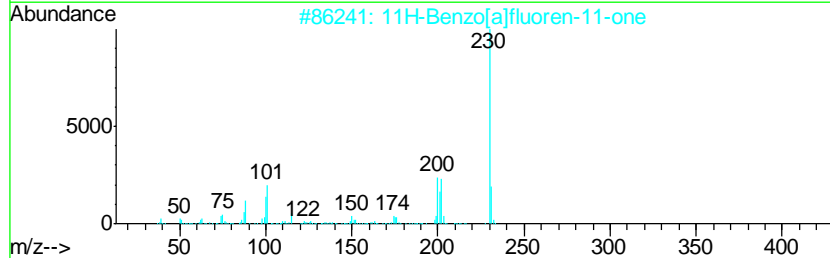
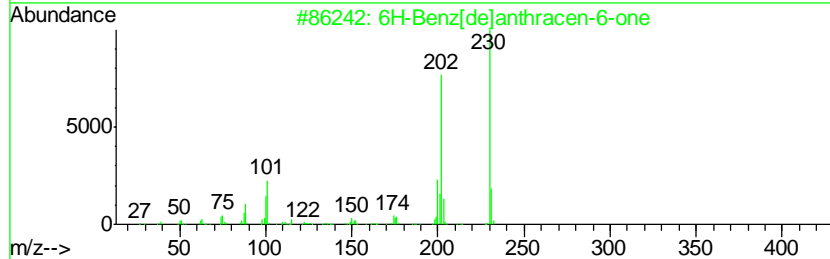
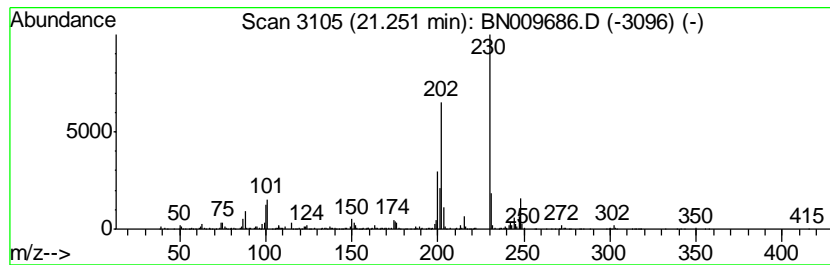
Quant Method : Z:\SVOASRV\HPCHEM1\BNA_N\METHODS\SOM-EPA-BN020320MA.M
 Quant Title : SVOA CALIBRATION

TIC Library : C:\DATABASE\NIST11.L
 TIC Integration Parameters: LSCINT.P

 Peak Number 23 6H-Benz[de]anthracen-6-one Concentration Rank 8

R.T.	EstConc	Area	Relative to ISTD	R.T.
21.25	6.88 ng/ul	1734030	Chrysene-d12	21.03

Hit#	of	Tentative ID	MW	MolForm	CAS#	Qual
1	5	6H-Benz[de]anthracen-6-one	230	C17H10O	080252-14-8	98
2		11H-Benzo[a]fluoren-11-one	230	C17H10O	000479-79-8	96
3		7H-Benz[de]anthracen-7-one	230	C17H10O	000082-05-3	95
4		7H-Benz[de]anthracen-7-one	230	C17H10O	000082-05-3	95
5		7H-Benz[de]anthracen-7-one	230	C17H10O	000082-05-3	95



Data Path : Z:\SVOASRV\HPCHEM1\BNA N\DATA\BN021020\
 Data File : BN009686.D
 Acq On : 10 Feb 2020 15:36
 Operator : CG/JU
 Sample : L1324-19ME
 Misc :
 ALS Vial : 10 Sample Multiplier: 1

Instrument :
 BNA_N
 ClientSampleID :
 GAT74ME

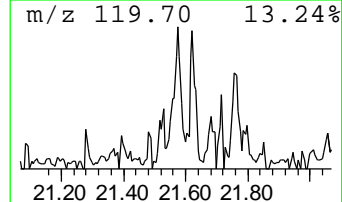
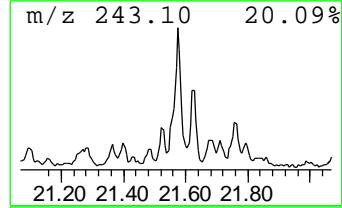
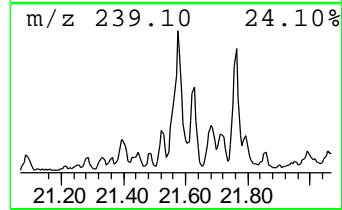
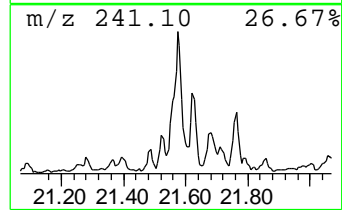
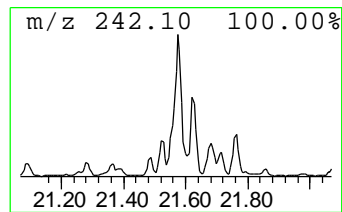
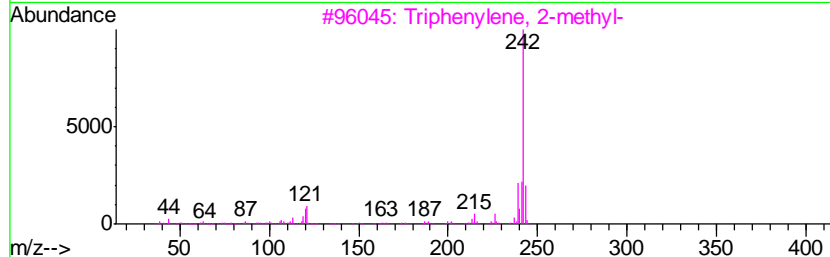
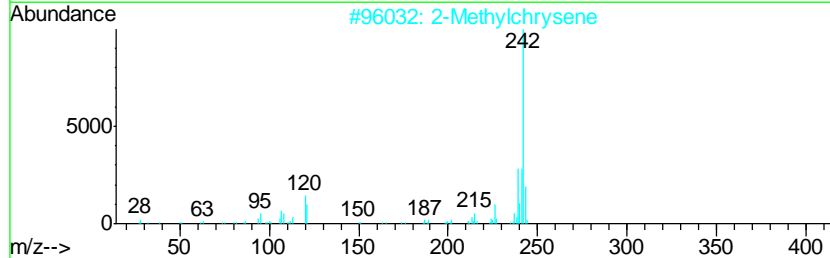
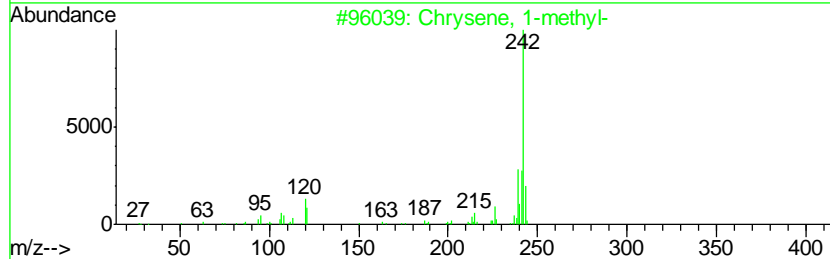
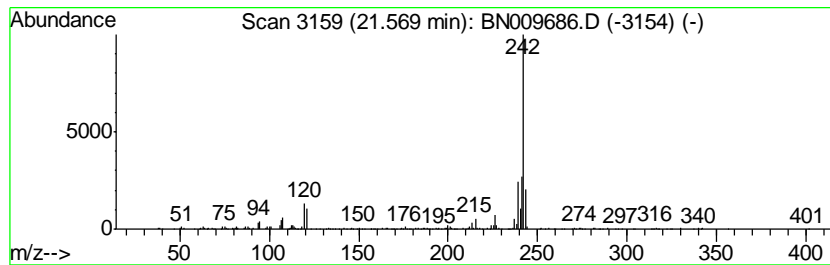
Quant Method : Z:\SVOASRV\HPCHEM1\BNA_N\METHODS\SOM-EPA-BN020320MA.M
 Quant Title : SVOA CALIBRATION

TIC Library : C:\DATABASE\NIST11.L
 TIC Integration Parameters: LSCINT.P

 Peak Number 24 Chrysene, 1-methyl- Concentration Rank 25

R.T.	EstConc	Area	Relative to ISTD	R.T.
21.57	2.74 ng/ul	690589	Chrysene-d12	21.03

Hit#	of	Tentative ID	MW	MolForm	CAS#	Qual
1	5	Chrysene, 1-methyl-	242	C19H14	003351-28-8	98
2		2-Methylchrysene	242	C19H14	003351-32-4	96
3		Triphenylene, 2-methyl-	242	C19H14	001705-84-6	96
4		Benz[<i>a</i>]anthracene, 1-methyl-	242	C19H14	002498-77-3	93
5		Chrysene, 3-methyl-	242	C19H14	003351-31-3	93



Data Path : Z:\SVOASRV\HPCHEM1\BNA N\DATA\BN021020\
 Data File : BN009686.D
 Acq On : 10 Feb 2020 15:36
 Operator : CG/JU
 Sample : L1324-19ME
 Misc :
 ALS Vial : 10 Sample Multiplier: 1

Instrument :
 BNA_N
 ClientSampleID :
 GAT74ME

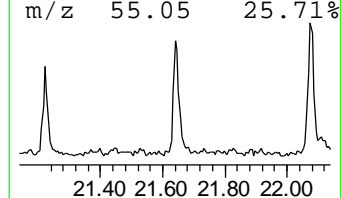
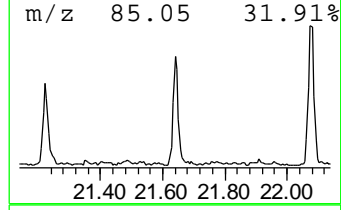
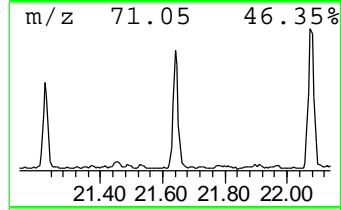
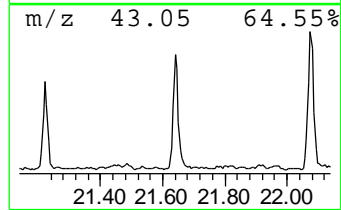
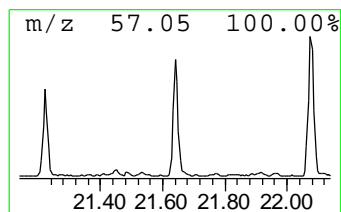
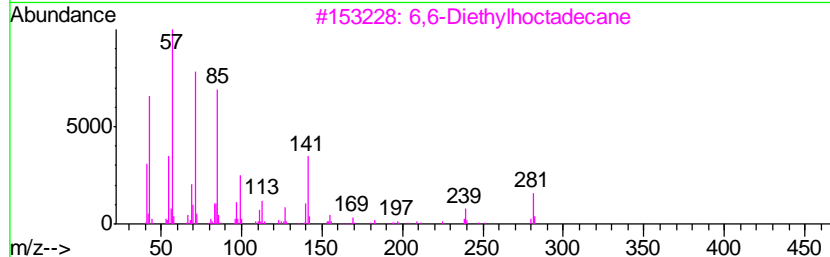
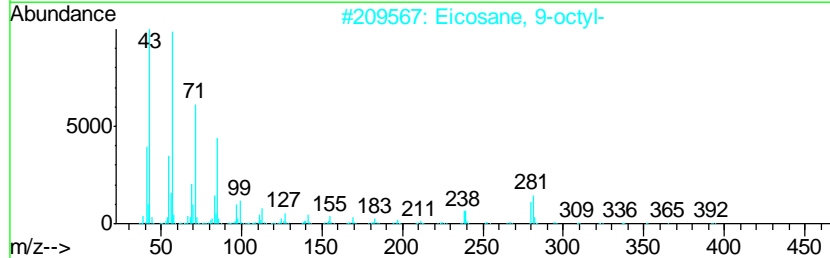
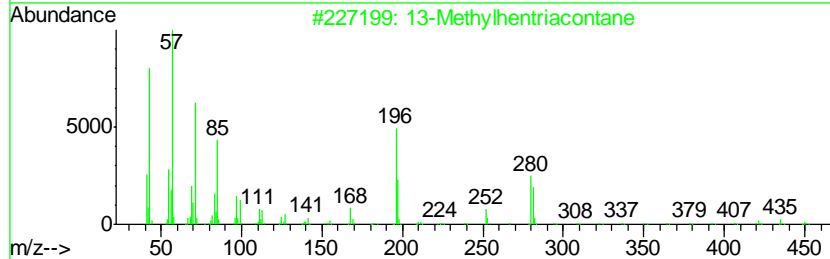
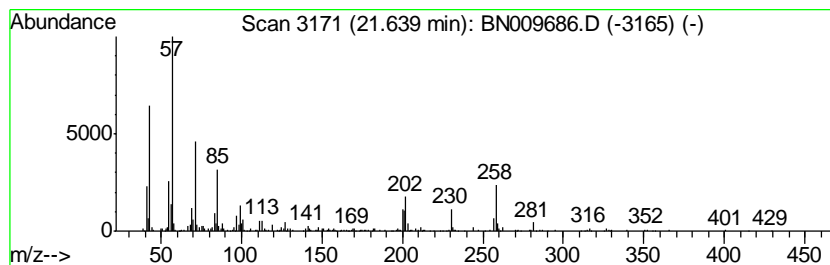
Quant Method : Z:\SVOASRV\HPCHEM1\BNA_N\METHODS\SOM-EPA-BN020320MA.M
 Quant Title : SVOA CALIBRATION

TIC Library : C:\DATABASE\NIST11.L
 TIC Integration Parameters: LSCINT.P

 Peak Number 25 unknown-02 Concentration Rank 28

R.T.	EstConc	Area	Relative to ISTD	R.T.
21.64	2.43 ng/ul	612491	Chrysene-d12	21.03

Hit#	of	Tentative ID	MW	MolForm	CAS#	Qual
1	5	13-Methylhentriacontane	451	C32H66	1000131-19-4	43
2		Eicosane, 9-octyl-	394	C28H58	013475-77-9	43
3		6,6-Diethyloctadecane	310	C22H46	1000360-41-8	38
4		Heneicosane, 3-methyl-	310	C22H46	006418-47-9	38
5		Threitol, 2-O-decyl-	262	C14H30O4	1000156-80-6	37



Data Path : Z:\SVOASRV\HPCHEM1\BNA N\DATA\BN021020\
 Data File : BN009686.D
 Acq On : 10 Feb 2020 15:36
 Operator : CG/JU
 Sample : L1324-19ME
 Misc :
 ALS Vial : 10 Sample Multiplier: 1

Instrument :
 BNA_N
 ClientSampleID :
 GAT74ME

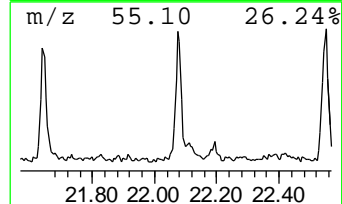
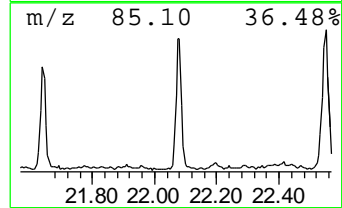
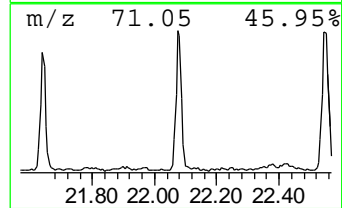
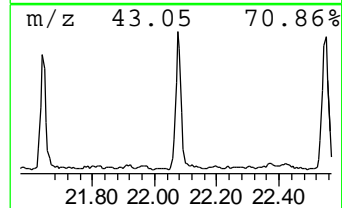
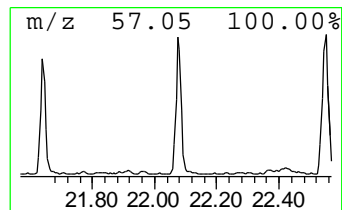
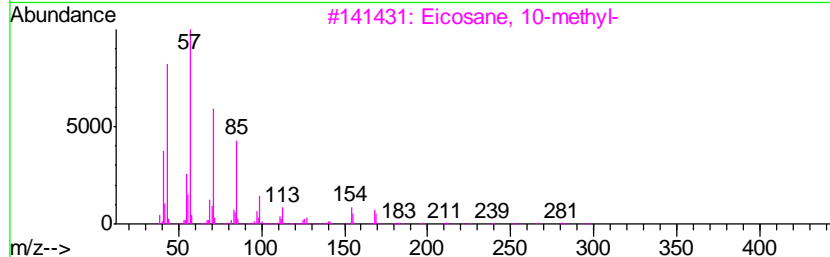
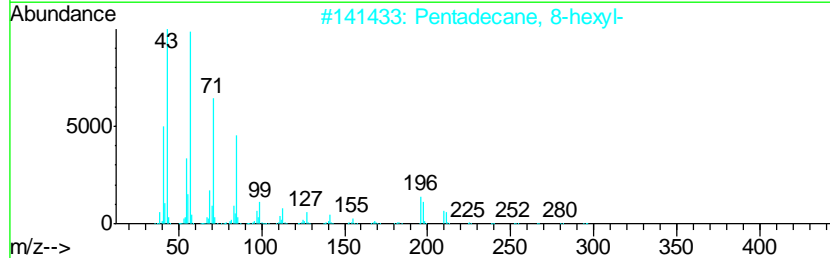
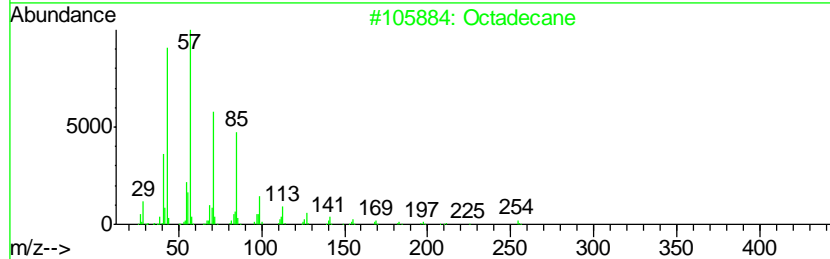
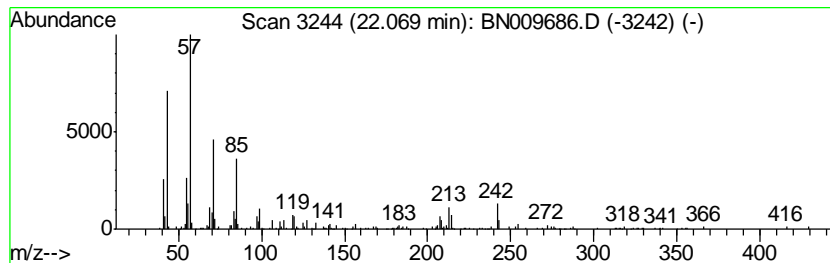
Quant Method : Z:\SVOASRV\HPCHEM1\BNA_N\METHODS\SOM-EPA-BN020320MA.M
 Quant Title : SVOA CALIBRATION

TIC Library : C:\DATABASE\NIST11.L
 TIC Integration Parameters: LSCINT.P

 Peak Number 26 (DEL) Alkane: Straight-Chai... Concentration Rank 31

R.T.	EstConc	Area	Relative to ISTD	R.T.
22.07	2.03 ng/ul	511944	Chrysene-d12	21.03

Hit#	of	Tentative ID	MW	MolForm	CAS#	Qual
1	5	Octadecane	254	C18H38	000593-45-3	86
2		Pentadecane, 8-hexyl-	296	C21H44	013475-75-7	86
3		Eicosane, 10-methyl-	296	C21H44	054833-23-7	86
4		1-Iodo-2-methylundecane	296	C12H25I	073105-67-6	81
5		Heptacosane	380	C27H56	000593-49-7	74



Data Path : Z:\SVOASRV\HPCHEM1\BNA N\DATA\BN021020\
 Data File : BN009686.D
 Acq On : 10 Feb 2020 15:36
 Operator : CG/JU
 Sample : L1324-19ME
 Misc :
 ALS Vial : 10 Sample Multiplier: 1

Instrument :
 BNA_N
 ClientSampleId :
 GAT74ME

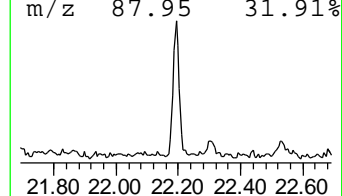
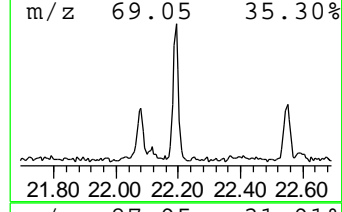
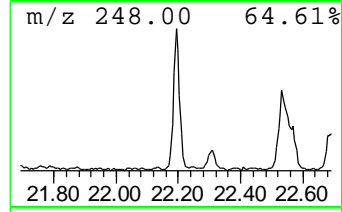
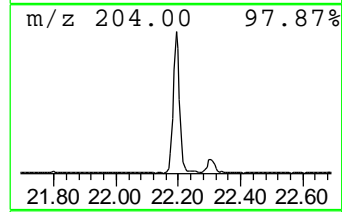
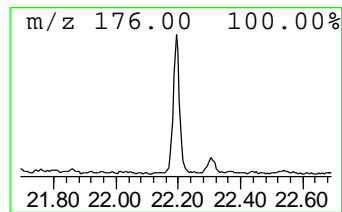
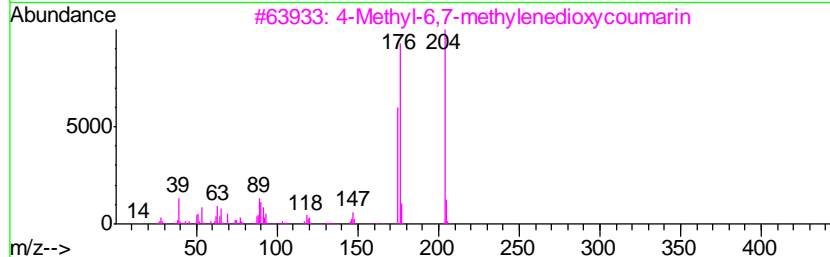
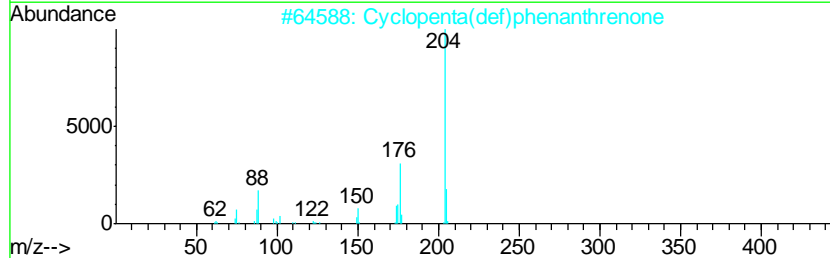
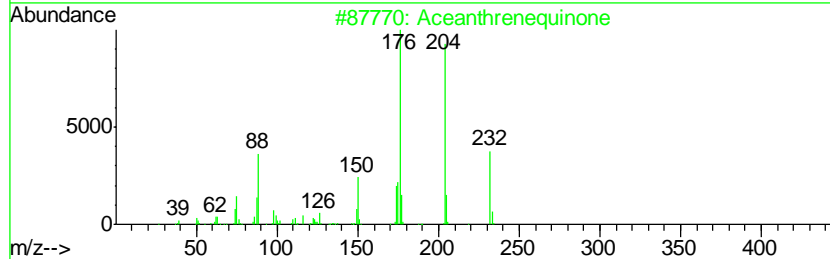
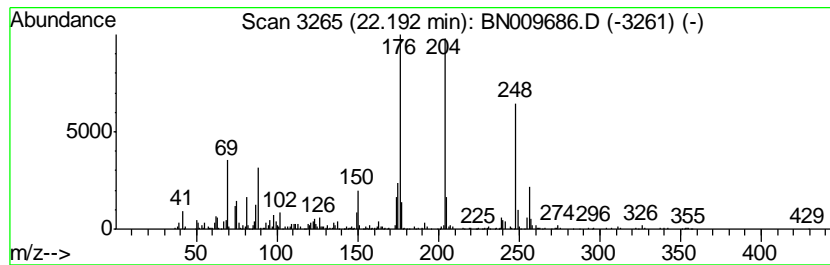
Quant Method : Z:\SVOASRV\HPCHEM1\BNA_N\METHODS\SOM-EPA-BN020320MA.M
 Quant Title : SVOA CALIBRATION

TIC Library : C:\DATABASE\NIST11.L
 TIC Integration Parameters: LSCINT.P

 Peak Number 27 Aceanthrenequinone Concentration Rank 5

R.T.	EstConc	Area	Relative to ISTD	R.T.
22.19	7.41 ng/ul	632521	Perylene-d12	23.15

Hit#	of	Tentative ID	MW	MolForm	CAS#	Qual
1	5	Aceanthrenequinone	232	C16H8O2	006373-11-1	76
2		Cyclopenta(def)phenanthrenone	204	C15H8O	005737-13-3	47
3		4-Methyl-6,7-methylenedioxy coumarin	204	C11H8O4	015071-04-2	43
4		9-Acridinecarbonitrile	204	C14H8N2	005326-19-2	25
5		[1,1'-Biphenyl]-2,2'-dicarbonitrile	204	C14H8N2	004341-02-0	22



Data Path : Z:\SVOASRV\HPCHEM1\BNA N\DATA\BN021020\
 Data File : BN009686.D
 Acq On : 10 Feb 2020 15:36
 Operator : CG/JU
 Sample : L1324-19ME
 Misc :
 ALS Vial : 10 Sample Multiplier: 1

Instrument :
 BNA_N
 ClientSampled :
 GAT74ME

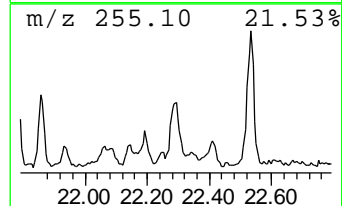
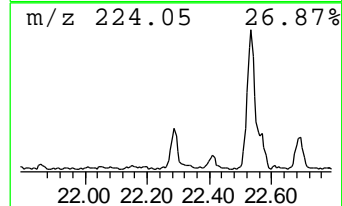
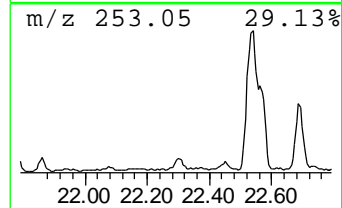
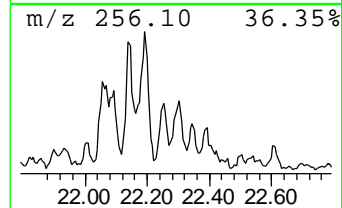
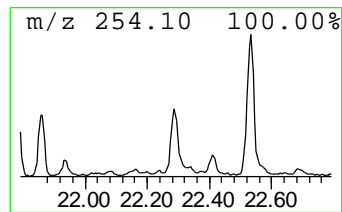
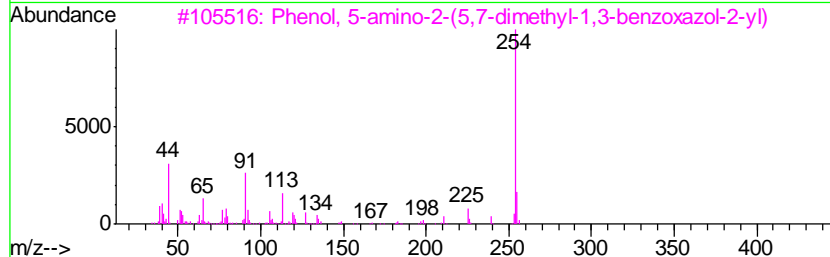
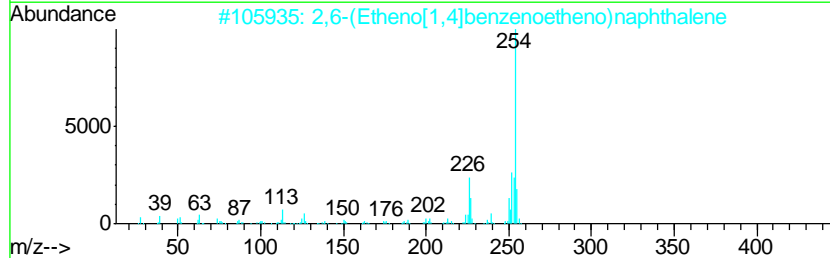
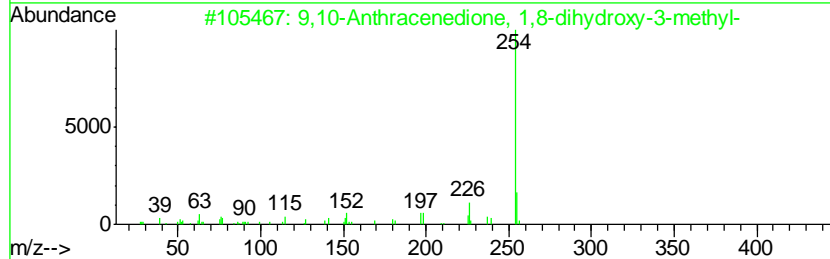
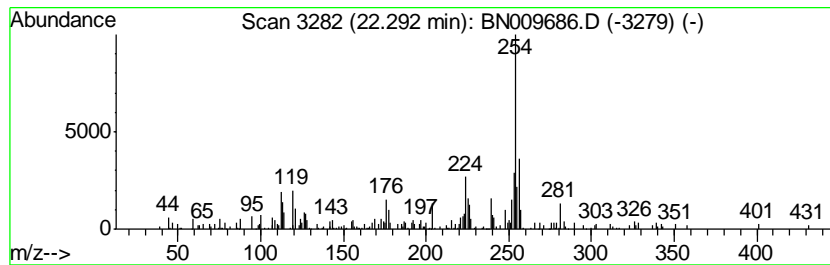
Quant Method : Z:\SVOASRV\HPCHEM1\BNA_N\METHODS\SOM-EPA-BN020320MA.M
 Quant Title : SVOA CALIBRATION

TIC Library : C:\DATABASE\NIST11.L
 TIC Integration Parameters: LSCINT.P

 Peak Number 28 9,10-Anthracenedione, 1,8-d... Concentration Rank 19

R.T.	EstConc	Area	Relative to ISTD	R.T.
22.29	3.55 ng/ul	302734	Perylene-d12	23.15

Hit#	of	Tentative ID	MW	MolForm	CAS#	Qual
1	5	9,10-Anthracenedione, 1,8-dihydr...	254	C15H10O4	000481-74-3	52
2		2,6-(Etheno[1,4]benzenoetheno)na...	254	C20H14	117054-70-3	50
3		Phenol, 5-amino-2-(5,7-dimethyl-...	254	C15H14N2O2	1000338-06-4	49
4		3-Phenylthio-2H-chromen-2-one	254	C15H10O2S	072167-95-4	47
5		Benzofuran-6-ol-3-one, 2-[4-hydr...	254	C15H10O4	1000128-64-9	47



Data Path : Z:\SVOASRV\HPCHEM1\BNA N\DATA\BN021020\
 Data File : BN009686.D
 Acq On : 10 Feb 2020 15:36
 Operator : CG/JU
 Sample : L1324-19ME
 Misc :
 ALS Vial : 10 Sample Multiplier: 1

Instrument :
 BNA_N
 ClientSampleId :
 GAT74ME

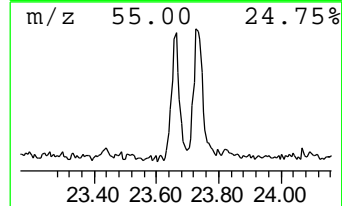
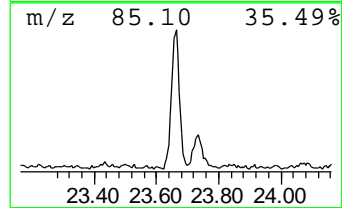
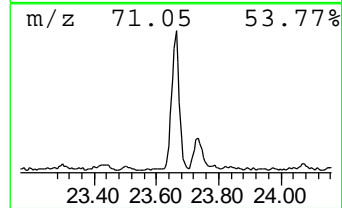
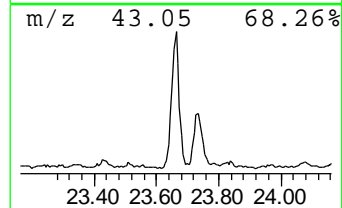
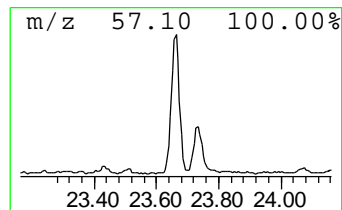
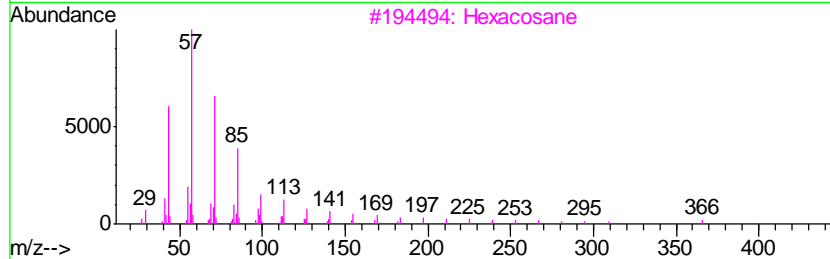
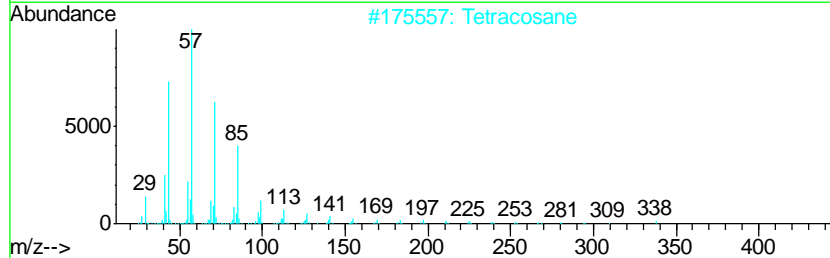
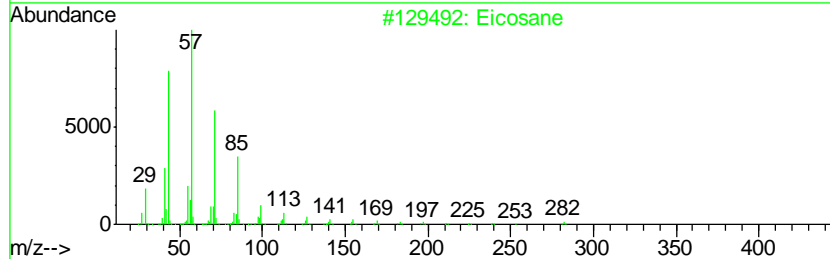
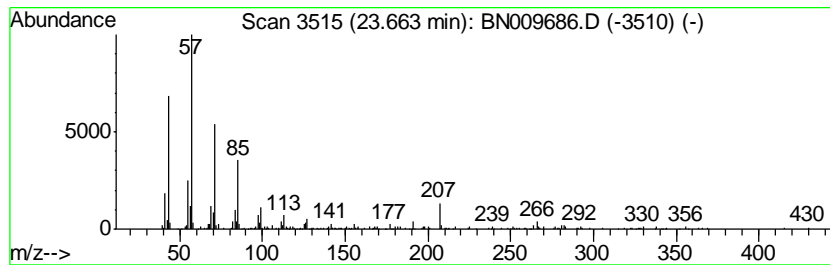
Quant Method : Z:\SVOASRV\HPCHEM1\BNA_N\METHODS\SOM-EPA-BN020320MA.M
 Quant Title : SVOA CALIBRATION

TIC Library : C:\DATABASE\NIST11.L
 TIC Integration Parameters: LSCINT.P

 Peak Number 30 (DEL) Alkane: Straight-Chai... Concentration Rank 10

R.T.	EstConc	Area	Relative to ISTD	R.T.
23.66	5.44 ng/ul	464543	Perylene-d12	23.15

Hit#	of	Tentative ID	MW	MolForm	CAS#	Qual
1	5	Eicosane	282	C20H42	000112-95-8	98
2		Tetracosane	338	C24H50	000646-31-1	97
3		Hexacosane	366	C26H54	000630-01-3	93
4		Tricosane, 2-methyl-	338	C24H50	001928-30-9	86
5		Heptacosane	380	C27H56	000593-49-7	76



Data Path : Z:\SVOASRV\HPCHEM1\BNA N\DATA\BN021020\
 Data File : BN009686.D
 Acq On : 10 Feb 2020 15:36
 Operator : CG/JU
 Sample : L1324-19ME
 Misc :
 ALS Vial : 10 Sample Multiplier: 1

Instrument :
 BNA_N
 ClientSampleID :
 GAT74ME

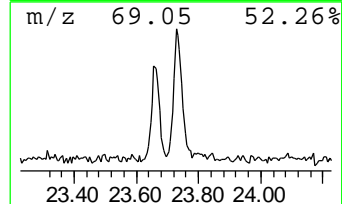
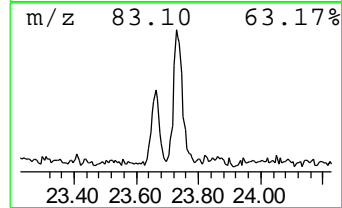
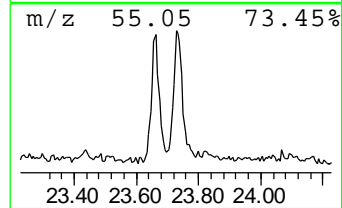
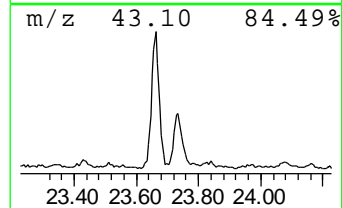
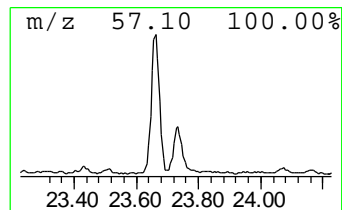
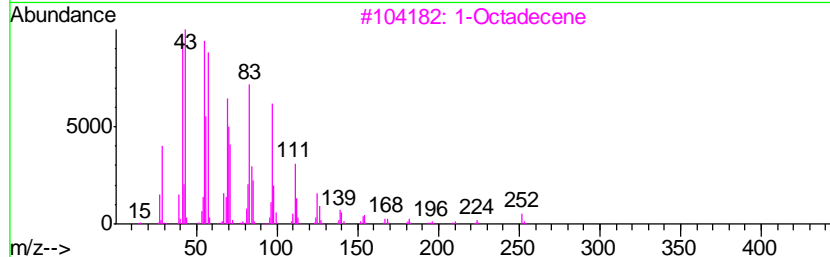
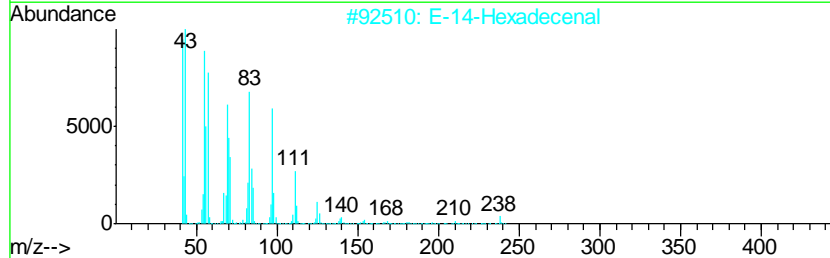
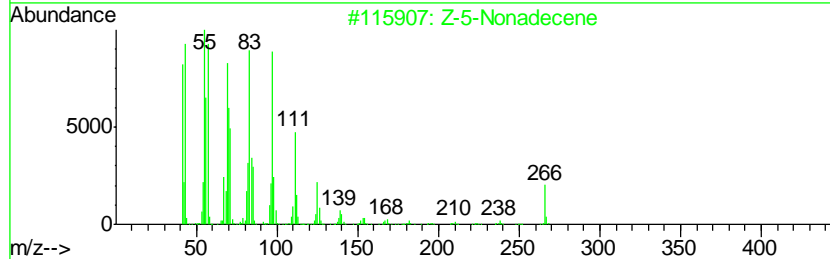
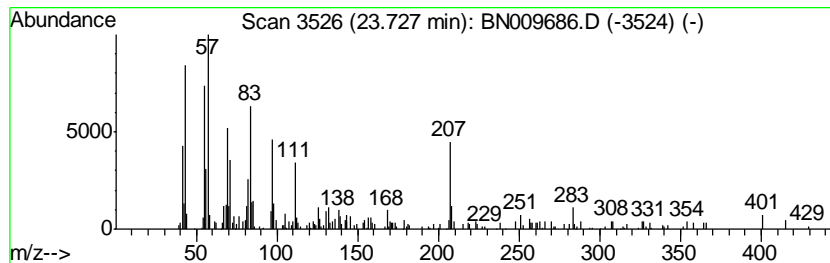
Quant Method : Z:\SVOASRV\HPCHEM1\BNA_N\METHODS\SOM-EPA-BN020320MA.M
 Quant Title : SVOA CALIBRATION

TIC Library : C:\DATABASE\NIST11.L
 TIC Integration Parameters: LSCINT.P

 Peak Number 31 (DEL) Alkane: Cyclic23.73 Concentration Rank 13

R.T.	EstConc	Area	Relative to ISTD	R.T.
23.73	4.52 ng/ul	385898	Perylene-d12	23.15

Hit#	of	Tentative ID	MW	MolForm	CAS#	Qual
1	5	Z-5-Nonadecene	266	C19H38	1000131-11-8	91
2		E-14-Hexadecenal	238	C16H30O	330207-53-9	90
3		1-Octadecene	252	C18H36	000112-88-9	90
4		1-Nonadecene	266	C19H38	018435-45-5	90
5		2-Methyl-E-7-octadecene	266	C19H38	1000130-92-3	89



Data Path : Z:\SVOASRV\HPCHEM1\BNA_N\DATA\BN021020\
 Data File : BN009686.D
 Acq On : 10 Feb 2020 15:36
 Operator : CG/JU
 Sample : L1324-19ME
 Misc :
 ALS Vial : 10 Sample Multiplier: 1

Instrument :
 BNA_N
 ClientSampleId :
 GAT74ME

Quant Method : Z:\SVOASRV\HPCHEM1\BNA_N\METHODS\SOM-EPA-BN020320MA.M
 Quant Title : SVOA CALIBRATION

TIC Library : C:\DATABASE\NIST11.L
 TIC Integration Parameters: LSCINT.P

TIC Top Hit name	RT	EstConc	Units	Response	--Internal Standard--			
					#	RT	Resp	Conc
Naphthalene, 1,4,...	14.69	2.4	ng/ul	188786	3	14.06	1587570	20.0
Fluorene-9-methanol	14.95	3.0	ng/ul	241243	3	14.06	1587570	20.0
(DEL) Alkane: Str...	15.82	2.6	ng/ul	241473	4	16.82	1850320	20.0
Dibenzo[a,e]cyclo...	17.35	4.0	ng/ul	366459	4	16.82	1850320	20.0
Phenanthrene, 2-m...	17.70	3.6	ng/ul	331906	4	16.82	1850320	20.0
Phenanthrene, 1-m...	17.75	6.6	ng/ul	607347	4	16.82	1850320	20.0
4H-Cyclopenta[def...	17.89	18.9	ng/ul	1752720	4	16.82	1850320	20.0
Anthracene, 9-met...	17.93	4.0	ng/ul	366224	4	16.82	1850320	20.0
Naphthalene, 2-ph...	18.20	7.2	ng/ul	668220	4	16.82	1850320	20.0
9,10-Anthracenedione	18.25	11.6	ng/ul	1069550	4	16.82	1850320	20.0
Phenanthrene, 2,5...	18.63	8.0	ng/ul	736331	4	16.82	1850320	20.0
unknown-01	18.69	5.4	ng/ul	502772	4	16.82	1850320	20.0
Cyclopenta(def)ph...	18.77	12.6	ng/ul	1169280	4	16.82	1850320	20.0
Pyrene, 1-methyl-	19.59	4.1	ng/ul	1036360	5	21.03	5041440	20.0
Fluoranthene, 2-m...	19.73	2.8	ng/ul	711599	5	21.03	5041440	20.0
11H-Benzo[a]fluorene	19.76	2.9	ng/ul	732425	5	21.03	5041440	20.0
Pyrene, 4-methyl-	20.06	2.3	ng/ul	575276	5	21.03	5041440	20.0
Benzo[b]naphtho[2...	20.67	3.0	ng/ul	749241	5	21.03	5041440	20.0
(DEL) Alkane: Cyc...	20.77	4.6	ng/ul	1166940	5	21.03	5041440	20.0
6H-Benz[de]anthra...	21.25	6.9	ng/ul	1734030	5	21.03	5041440	20.0
Chrysene, 1-methyl-	21.57	2.7	ng/ul	690589	5	21.03	5041440	20.0
unknown-02	21.64	2.4	ng/ul	612491	5	21.03	5041440	20.0
(DEL) Alkane: Str...	22.07	2.0	ng/ul	511944	5	21.03	5041440	20.0
Aceanthrenequinone	22.19	7.4	ng/ul	632521	6	23.15	1707000	20.0
9,10-Anthracenedi...	22.29	3.5	ng/ul	302734	6	23.15	1707000	20.0
(DEL) Alkane: Str...	23.66	5.4	ng/ul	464543	6	23.15	1707000	20.0
(DEL) Alkane: Cyc...	23.73	4.5	ng/ul	385898	6	23.15	1707000	20.0