

Data Path : Z:\SVOASRV\HPCHEM1\BNA\_N\DATA\BN021020\  
 Data File : BN009695.D  
 Acq On : 10 Feb 2020 21:00  
 Operator : CG/JU  
 Sample : L1324-15MEDL2 40X  
 Misc :  
 ALS Vial : 18 Sample Multiplier: 1

Instrument :  
 BNA\_N  
 ClientSampleId :  
 GAT70MEDL2

Integration Parameters: LSCINT.P

Integrator: RTE  
 Smoothing : OFF Filtering: 5  
 Sampling : 1 Min Area: 0.1 % of largest Peak  
 Start Thrs: 0.2 Max Peaks: 100  
 Stop Thrs : 0 Peak Location: TOP

If leading or trailing edge < 100 prefer < Baseline drop else tangent >  
 Peak separation: 5

Method : Z:\SVOASRV\HPCHEM1\BNA\_N\METHODS\SOM-EPA-BN020320MA.M  
 Title : SVOA CALIBRATION

Signal : TIC

peak #	R.T. min	first scan	max scan	last scan	PK TY	peak height	corr. area	corr. % max.	% of total
1	3.758	127	131	134	rBV5	5907	9030	0.42%	0.049%
2	5.140	361	366	374	rVB5	10323	27075	1.26%	0.146%
3	5.475	419	423	424	rBV2	9987	12156	0.57%	0.066%
4	6.669	623	626	631	rVB5	6780	10694	0.50%	0.058%
5	6.799	643	648	656	rBV7	5615	12693	0.59%	0.069%
6	7.093	689	698	705	rBV4	40214	78869	3.67%	0.426%
7	7.175	709	712	721	rVB6	7044	12960	0.60%	0.070%
8	7.428	749	755	767	rBV	507821	812165	37.84%	4.391%
9	7.546	770	775	779	rVB4	8412	15230	0.71%	0.082%
10	7.622	782	788	791	rBV8	5346	8881	0.41%	0.048%
11	7.952	839	844	853	rBV	124292	208637	9.72%	1.128%
12	8.599	948	954	961	rVB6	5736	12689	0.59%	0.069%
13	8.657	961	964	968	rVV3	6706	8594	0.40%	0.046%
14	9.099	1035	1039	1044	rBV7	7400	10773	0.50%	0.058%
15	9.622	1120	1128	1134	rVV6	27509	64178	2.99%	0.347%
16	9.687	1134	1139	1144	rVV2	23583	43849	2.04%	0.237%
17	9.728	1144	1146	1151	rVB3	11163	13575	0.63%	0.073%
18	10.175	1215	1222	1226	rBV	713600	1180654	55.01%	6.383%
19	10.228	1226	1231	1241	rVB	990914	1636416	76.24%	8.847%
20	10.351	1247	1252	1261	rVB5	12914	27608	1.29%	0.149%
21	11.645	1467	1472	1476	rVV4	8310	11661	0.54%	0.063%
22	11.851	1500	1507	1515	rBV	439016	736350	34.31%	3.981%
23	12.075	1537	1545	1551	rBV	275625	445553	20.76%	2.409%
24	12.892	1678	1684	1693	rBV	68164	113637	5.29%	0.614%
25	13.087	1713	1717	1721	rBV2	11271	17388	0.81%	0.094%
26	13.228	1735	1741	1742	rBV2	46059	67613	3.15%	0.366%
27	13.387	1761	1768	1773	rBV	100161	161651	7.53%	0.874%
28	13.439	1773	1777	1782	rVV	62205	82220	3.83%	0.444%
29	13.522	1783	1791	1799	rVV5	28998	69150	3.22%	0.374%
30	13.622	1803	1808	1812	rVV	42919	66980	3.12%	0.362%
31	13.651	1812	1813	1819	rVB3	15231	12992	0.61%	0.070%
32	13.781	1826	1835	1852	rVB	210692	353642	16.48%	1.912%
33	14.004	1870	1873	1878	rBV5	7627	8837	0.41%	0.048%
34	14.069	1878	1884	1890	rVV2	1011501	1545442	72.00%	8.355%

Data Path : Z:\SVOASRV\HPCHEM1\BNA\_N\DATA\BN021020\  
 Data File : BN009695.D  
 Acq On : 10 Feb 2020 21:00  
 Operator : CG/JU  
 Sample : L1324-15MEDL2 40X  
 Misc :  
 ALS Vial : 18 Sample Multiplier: 1

Instrument :  
 BNA\_N  
 ClientSampleId :  
 GAT70MEDL2

## Integration Parameters: LSCINT.P

Integrator: RTE  
 Smoothing : OFF Filtering: 5  
 Sampling : 1 Min Area: 0.1 % of largest Peak  
 Start Thrs: 0.2 Max Peaks: 100  
 Stop Thrs : 0 Peak Location: TOP

If leading or trailing edge < 100 prefer < Baseline drop else tangent >  
 Peak separation: 5

Method : Z:\SVOASRV\HPCHEM1\BNA\_N\METHODS\SOM-EPA-BN020320MA.M  
 Title : SVOA CALIBRATION

35	14.134	1890	1895	1899	rVV	29708	46882	2.18%	0.253%
36	14.169	1899	1901	1906	rVB3	12142	15399	0.72%	0.083%
37	14.481	1949	1954	1961	rVB2	29874	47097	2.19%	0.255%
38	14.557	1961	1967	1972	rBV2	16934	23306	1.09%	0.126%
39	14.692	1984	1990	1995	rBV3	17450	32540	1.52%	0.176%
40	14.757	1995	2001	2005	rVB3	12801	17199	0.80%	0.093%
41	14.869	2012	2020	2024	rBV6	8947	21318	0.99%	0.115%
42	14.951	2029	2034	2040	rVV3	23949	42382	1.97%	0.229%
43	15.028	2042	2047	2050	rVV5	7740	12999	0.61%	0.070%
44	15.069	2050	2054	2059	rVV2	48432	70650	3.29%	0.382%
45	15.128	2059	2064	2078	rVV	184103	292940	13.65%	1.584%
46	15.251	2078	2085	2089	rVV6	10463	25137	1.17%	0.136%
47	15.292	2089	2092	2095	rVV5	8114	11083	0.52%	0.060%
48	15.333	2095	2099	2103	rVV2	10803	19973	0.93%	0.108%
49	15.369	2103	2105	2111	rVV6	7015	11103	0.52%	0.060%
50	15.433	2111	2116	2119	rVV2	14916	23634	1.10%	0.128%
51	15.469	2119	2122	2126	rVV2	7817	10916	0.51%	0.059%
52	15.545	2129	2135	2139	rBV3	26122	42243	1.97%	0.228%
53	15.581	2139	2141	2149	rVB5	8218	17522	0.82%	0.095%
54	15.822	2178	2182	2186	rBV4	9853	15083	0.70%	0.082%
55	16.139	2229	2236	2241	rBV3	26987	55884	2.60%	0.302%
56	16.186	2241	2244	2248	rVB3	19831	25352	1.18%	0.137%
57	16.286	2255	2261	2267	rBV2	20670	29238	1.36%	0.158%
58	16.410	2277	2282	2285	rVV6	6739	9996	0.47%	0.054%
59	16.492	2293	2296	2303	rVB5	8451	12341	0.57%	0.067%
60	16.639	2313	2321	2330	rVV	54136	82079	3.82%	0.444%
61	16.822	2345	2352	2356	rBV	1205533	1748153	81.45%	9.451%
62	16.863	2356	2359	2365	rVV	705437	962025	44.82%	5.201%
63	16.922	2365	2369	2371	rVV	33775	45925	2.14%	0.248%
64	16.957	2371	2375	2383	rVB	134994	197117	9.18%	1.066%
65	17.251	2420	2425	2428	rBV5	7051	11175	0.52%	0.060%
66	17.351	2437	2442	2446	rVB2	19984	25191	1.17%	0.136%
67	17.404	2446	2451	2455	rVV	23890	35735	1.66%	0.193%
68	17.545	2471	2475	2483	rVB3	17870	30673	1.43%	0.166%
69	17.698	2496	2501	2505	rBV	105515	149841	6.98%	0.810%
70	17.751	2505	2510	2516	rVB	115797	165953	7.73%	0.897%
71	17.827	2517	2523	2528	rBV3	29274	45300	2.11%	0.245%

Data Path : Z:\SVOASRV\HPCHEM1\BNA\_N\DATA\BN021020\  
 Data File : BN009695.D  
 Acq On : 10 Feb 2020 21:00  
 Operator : CG/JU  
 Sample : L1324-15MEDL2 40X  
 Misc :  
 ALS Vial : 18 Sample Multiplier: 1

Instrument :  
 BNA\_N  
 ClientSampleId :  
 GAT70MEDL2

Integration Parameters: LSCINT.P

Integrator: RTE  
 Smoothing : OFF  
 Sampling : 1  
 Start Thrs: 0.2  
 Stop Thrs : 0

Filtering: 5  
 Min Area: 0.1 % of largest Peak  
 Max Peaks: 100  
 Peak Location: TOP

If leading or trailing edge < 100 prefer < Baseline drop else tangent >  
 Peak separation: 5

Method : Z:\SVOASRV\HPCHEM1\BNA\_N\METHODS\SOM-EPA-BN020320MA.M  
 Title : SVOA CALIBRATION

72	17.892	2528	2534	2538	rVV3	142439	245954	11.46%	1.330%
73	17.927	2538	2540	2547	rVB	72329	93248	4.34%	0.504%
74	18.104	2564	2570	2574	rBV4	6998	11710	0.55%	0.063%
75	18.210	2584	2588	2595	rBV	45378	63703	2.97%	0.344%
76	18.457	2627	2630	2633	rVB3	8547	10357	0.48%	0.056%
77	18.510	2636	2639	2644	rBV4	10397	13496	0.63%	0.073%
78	18.551	2644	2646	2650	rVB4	8719	9678	0.45%	0.052%
79	18.633	2653	2660	2664	rBV2	46784	69834	3.25%	0.378%
80	18.692	2664	2670	2673	rBV6	25303	45455	2.12%	0.246%
81	18.727	2673	2676	2680	rVB4	14922	18198	0.85%	0.098%
82	18.769	2680	2683	2684	rBV3	12224	13822	0.64%	0.075%
83	18.892	2698	2704	2711	rBV	279013	387218	18.04%	2.093%
84	18.974	2714	2718	2720	rVV5	6862	9881	0.46%	0.053%
85	18.998	2720	2722	2726	rVV5	6236	8862	0.41%	0.048%
86	19.045	2726	2730	2735	rVV2	53970	72179	3.36%	0.390%
87	19.139	2743	2746	2748	rBV3	7790	10497	0.49%	0.057%
88	19.257	2756	2766	2776	rBV	388459	597541	27.84%	3.230%
89	19.598	2818	2824	2831	rBV4	30119	58289	2.72%	0.315%
90	19.733	2842	2847	2848	rBV3	27282	36522	1.70%	0.197%
91	19.769	2849	2853	2857	rVB2	62747	87791	4.09%	0.475%
92	19.869	2866	2870	2873	rBV2	58889	68818	3.21%	0.372%
93	19.921	2875	2879	2884	rBV2	47943	63680	2.97%	0.344%
94	20.063	2900	2903	2906	rVB2	32121	32231	1.50%	0.174%
95	20.110	2907	2911	2916	rVB3	33838	51295	2.39%	0.277%
96	20.686	3005	3009	3011	rBV	24087	35016	1.63%	0.189%
97	20.721	3012	3015	3018	rVV	30573	34240	1.60%	0.185%
98	21.033	3062	3068	3073	rBV	1528455	2146378	100.00%	11.604%
99	21.074	3073	3075	3081	rVB	126889	150847	7.03%	0.815%
100	23.151	3422	3428	3435	rVB	1004619	1719582	80.12%	9.296%

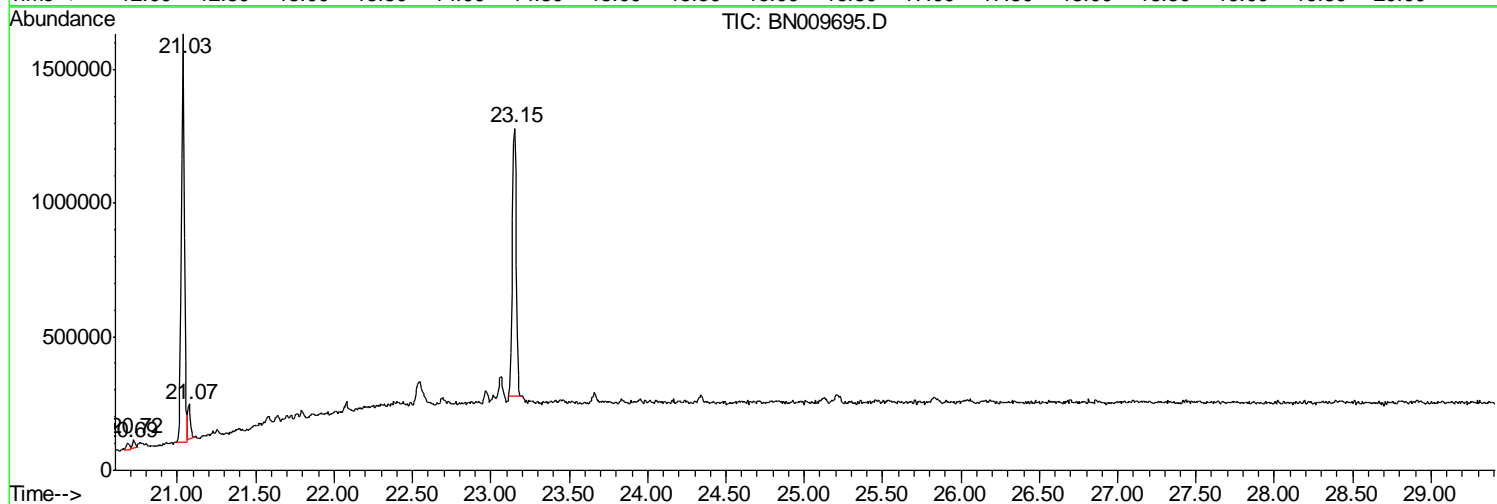
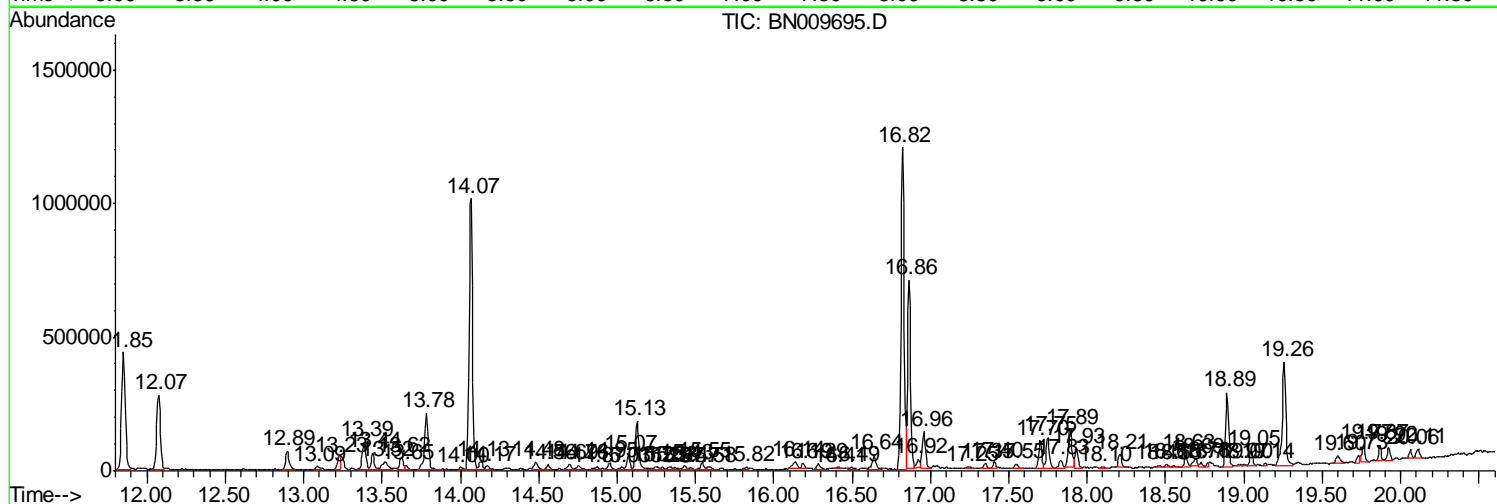
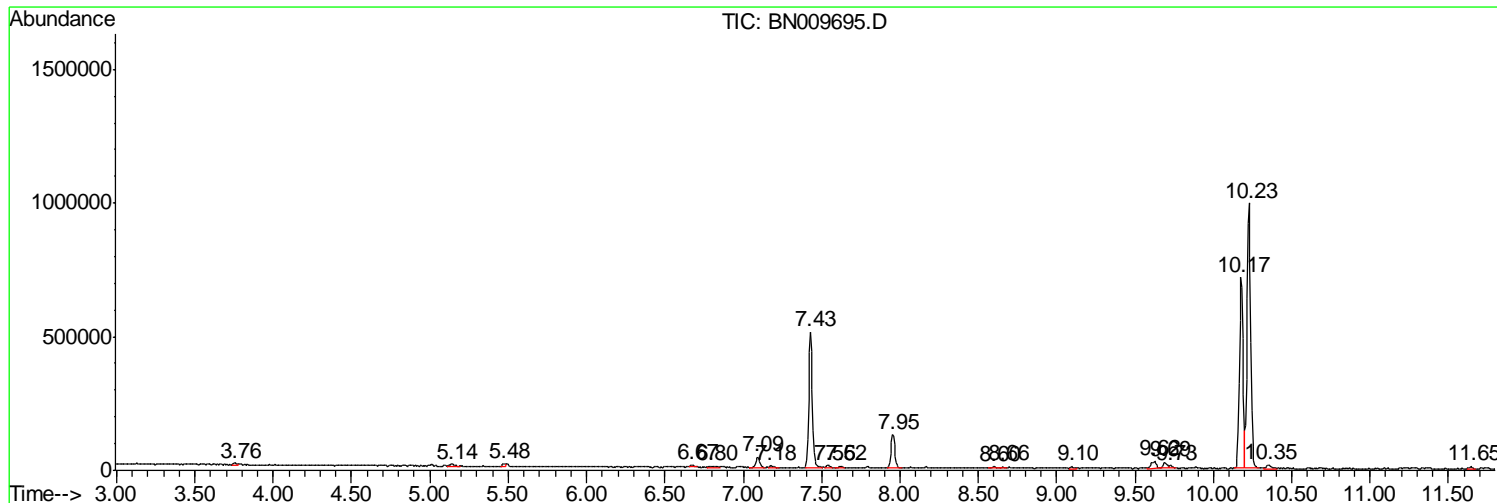
Sum of corrected areas: 18497548

Data Path : Z:\SVOASRV\HPCHEM1\BNA N\DATA\BN021020\  
 Data File : BN009695.D  
 Acq On : 10 Feb 2020 21:00  
 Operator : CG/JU  
 Sample : L1324-15MEDL2 40X  
 Misc :  
 ALS Vial : 18 Sample Multiplier: 1

Instrument :  
 BNA\_N  
 Client Sampled :  
 GAT70MEDL2

Quant Method : Z:\SVOASRV\HPCHEM1\BNA\_N\METHODS\SOM-EPA-BN020320MA.M  
 Quant Title : SVOA CALIBRATION

TIC Library : C:\DATABASE\NIST11.L  
 TIC Integration Parameters: LSCINT.P



Data Path : Z:\SVOASRV\HPCHEM1\BNA N\DATA\BN021020\  
 Data File : BN009695.D  
 Acq On : 10 Feb 2020 21:00  
 Operator : CG/JU  
 Sample : L1324-15MEDL2 40X  
 Misc :  
 ALS Vial : 18 Sample Multiplier: 1

Instrument :  
 BNA\_N  
 ClientSampleID :  
 GAT70MEDL2

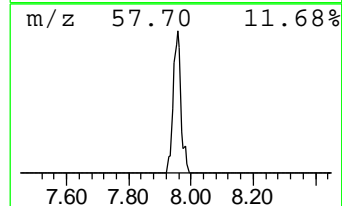
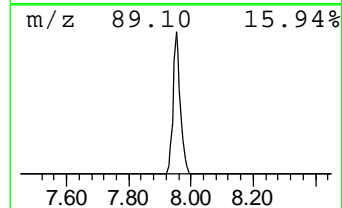
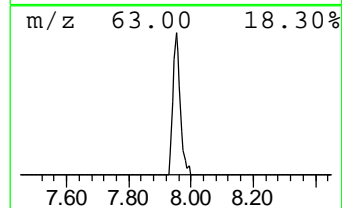
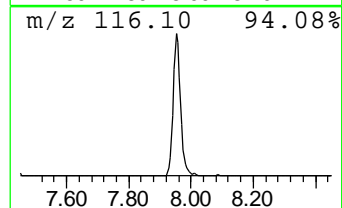
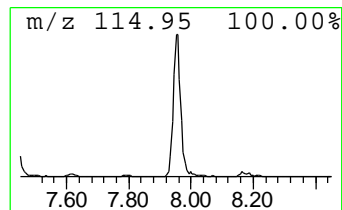
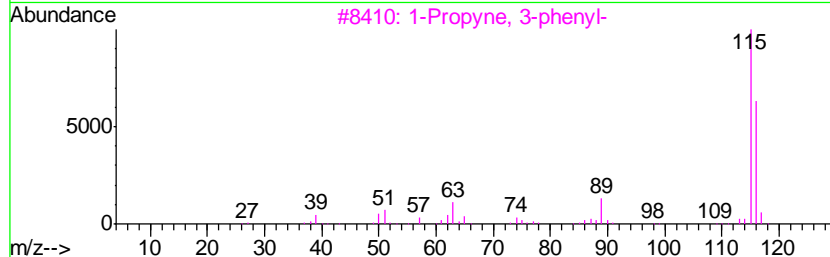
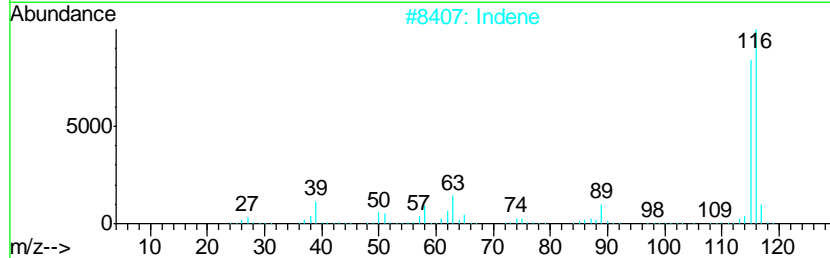
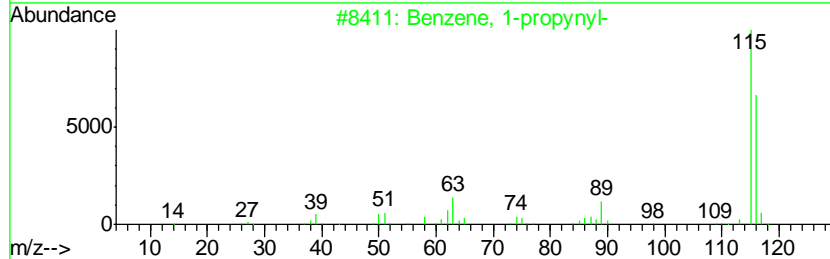
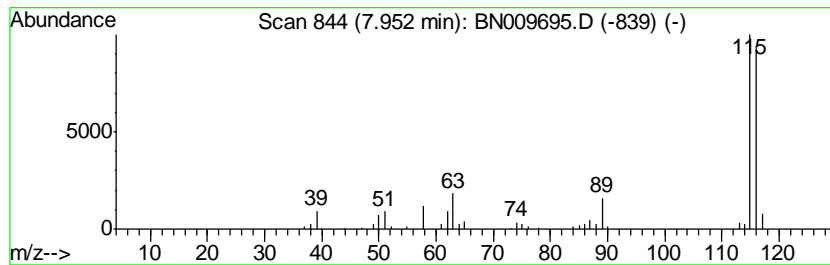
Quant Method : Z:\SVOASRV\HPCHEM1\BNA\_N\METHODS\SOM-EPA-BN020320MA.M  
 Quant Title : SVOA CALIBRATION

TIC Library : C:\DATABASE\NIST11.L  
 TIC Integration Parameters: LSCINT.P

\*\*\*\*\*  
 Peak Number 1 Benzene, 1-propynyl- Concentration Rank 2

R.T.	EstConc	Area	Relative to ISTD	R.T.
7.95	5.14 ng/ul	208637	1,4-Dichlorobenzene-d4	7.43

Hit#	of	Tentative ID	MW	MolForm	CAS#	Qual
1	5	Benzene, 1-propynyl-	116	C9H8	000673-32-5	93
2		Indene	116	C9H8	000095-13-6	91
3		1-Propyne, 3-phenyl-	116	C9H8	010147-11-2	90
4		Benzene, 1-ethynyl-4-methyl-	116	C9H8	000766-97-2	90
5		Indene	116	C9H8	000095-13-6	87



Data Path : Z:\SVOASRV\HPCHEM1\BNA N\DATA\BN021020\  
 Data File : BN009695.D  
 Acq On : 10 Feb 2020 21:00  
 Operator : CG/JU  
 Sample : L1324-15MEDL2 40X  
 Misc :  
 ALS Vial : 18 Sample Multiplier: 1

Instrument :  
 BNA\_N  
 ClientSampleID :  
 GAT70MEDL2

Quant Method : Z:\SVOASRV\HPCHEM1\BNA\_N\METHODS\SOM-EPA-BN020320MA.M  
 Quant Title : SVOA CALIBRATION

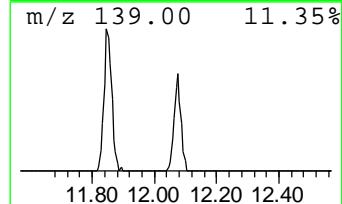
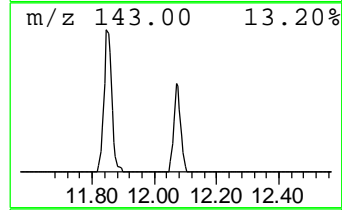
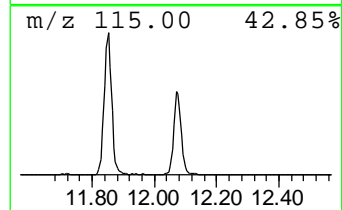
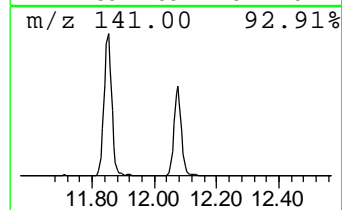
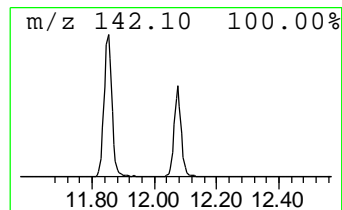
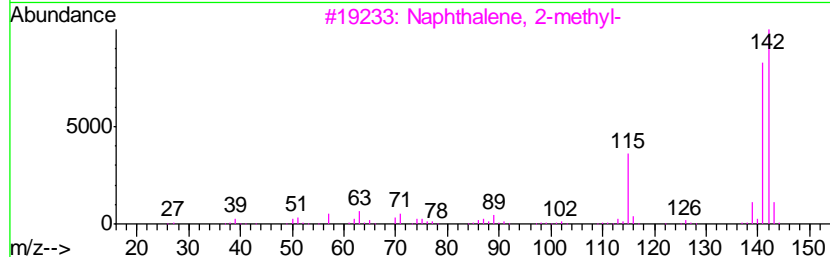
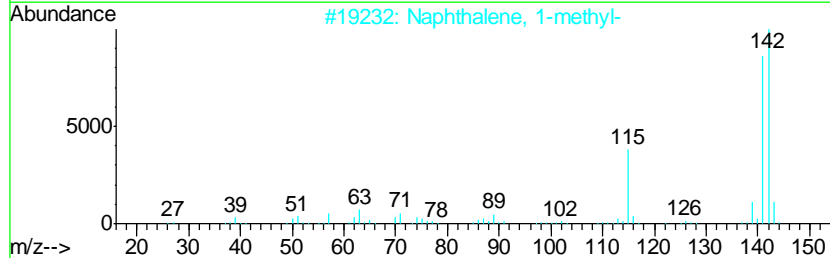
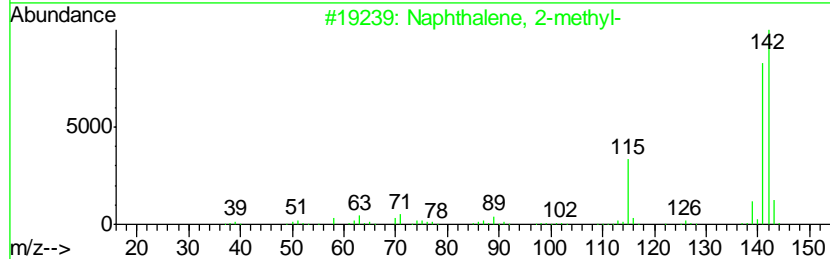
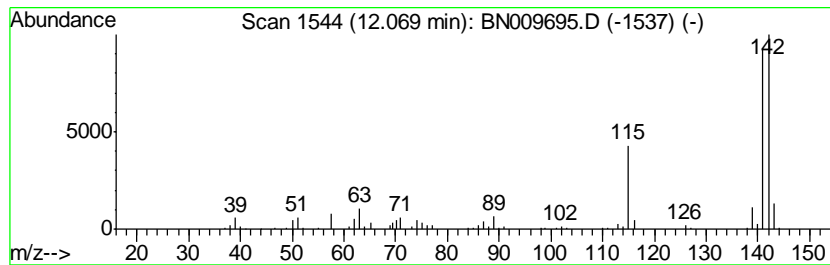
TIC Library : C:\DATABASE\NIST11.L  
 TIC Integration Parameters: LSCINT.P

\*\*\*\*\*  
 Peak Number 2 Naphthalene, 1-methyl- Concentration Rank 1

R.T.	EstConc	Area	Relative to ISTD	R.T.
12.07	7.55 ng/ul	445553	Naphthalene-d8	10.17

Hit#	of	Tentative ID	MW	MolForm	CAS#	Qual
1	5	Naphthalene, 2-methyl-	142	C11H10	000091-57-6	96
2		Naphthalene, 1-methyl-	142	C11H10	000090-12-0	96
3		Naphthalene, 2-methyl-	142	C11H10	000091-57-6	96
4		Naphthalene, 2-methyl-	142	C11H10	000091-57-6	94
5		1,4-Methanonaphthalene, 1,4-dihy...	142	C11H10	004453-90-1	94



Data Path : Z:\SVOASRV\HPCHEM1\BNA N\DATA\BN021020\  
 Data File : BN009695.D  
 Acq On : 10 Feb 2020 21:00  
 Operator : CG/JU  
 Sample : L1324-15MEDL2 40X  
 Misc :  
 ALS Vial : 18 Sample Multiplier: 1

Instrument :  
 BNA\_N  
 ClientSampleID :  
 GAT70MEDL2

Quant Method : Z:\SVOASRV\HPCHEM1\BNA\_N\METHODS\SOM-EPA-BN020320MA.M  
 Quant Title : SVOA CALIBRATION

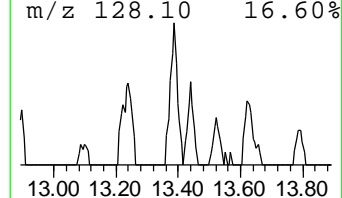
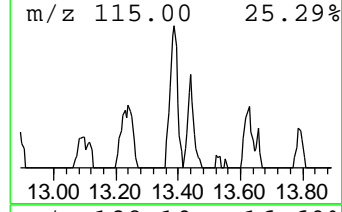
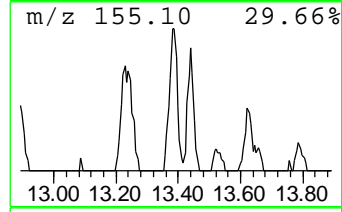
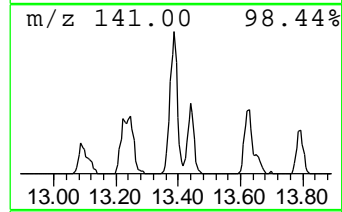
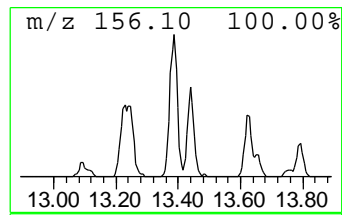
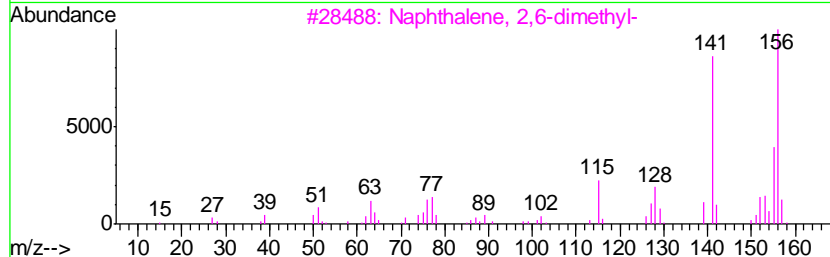
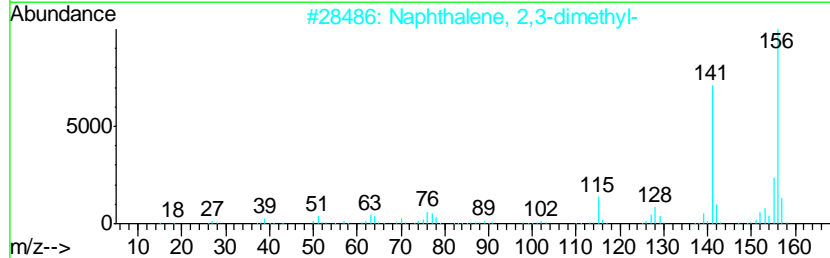
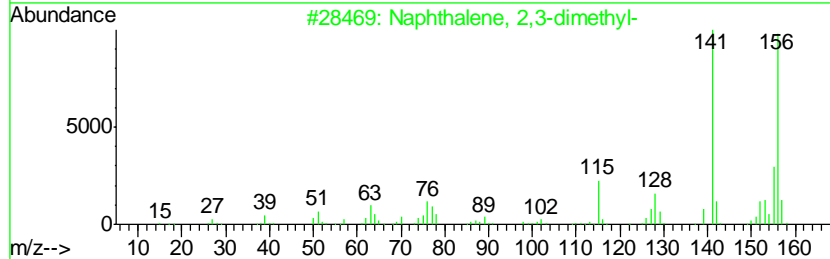
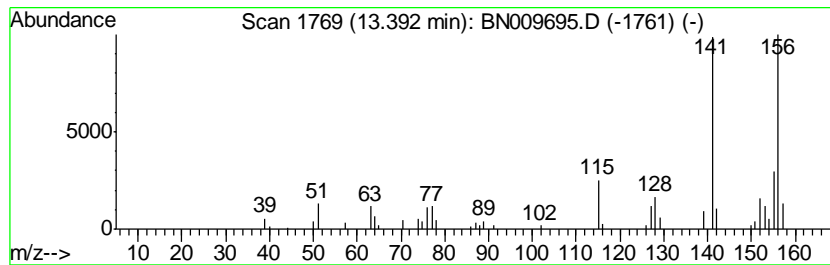
TIC Library : C:\DATABASE\NIST11.L  
 TIC Integration Parameters: LSCINT.P

\*\*\*\*\*  
 Peak Number 3 Naphthalene, 2,3-dimethyl- Concentration Rank 4

R.T.	EstConc	Area	Relative to ISTD	R.T.
13.39	2.09 ng/ul	161651	Acenaphthene-d10	14.06

Hit#	of	Tentative ID	MW	MolForm	CAS#	Qual
1	5	Naphthalene, 2,3-dimethyl-	156	C12H12	000581-40-8	97
2		Naphthalene, 2,3-dimethyl-	156	C12H12	000581-40-8	97
3		Naphthalene, 2,6-dimethyl-	156	C12H12	000581-42-0	96
4		Naphthalene, 2,3-dimethyl-	156	C12H12	000581-40-8	96
5		Naphthalene, 1,6-dimethyl-	156	C12H12	000575-43-9	96



Data Path : Z:\SVOASRV\HPCHEM1\BNA N\DATA\BN021020\  
 Data File : BN009695.D  
 Acq On : 10 Feb 2020 21:00  
 Operator : CG/JU  
 Sample : L1324-15MEDL2 40X  
 Misc :  
 ALS Vial : 18 Sample Multiplier: 1

Instrument :  
 BNA\_N  
 ClientSampleID :  
 GAT70MEDL2

Quant Method : Z:\SVOASRV\HPCHEM1\BNA\_N\METHODS\SOM-EPA-BN020320MA.M  
 Quant Title : SVOA CALIBRATION

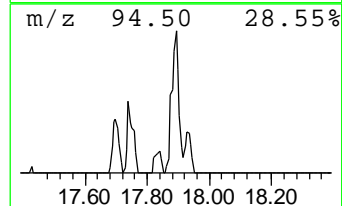
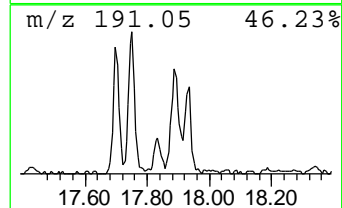
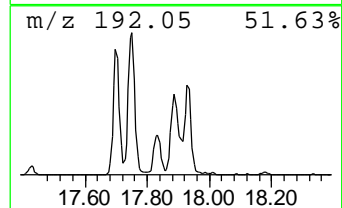
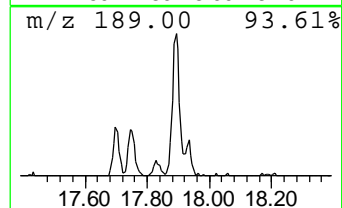
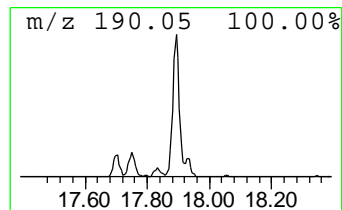
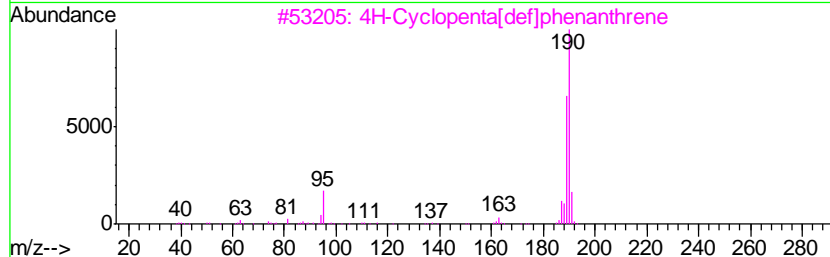
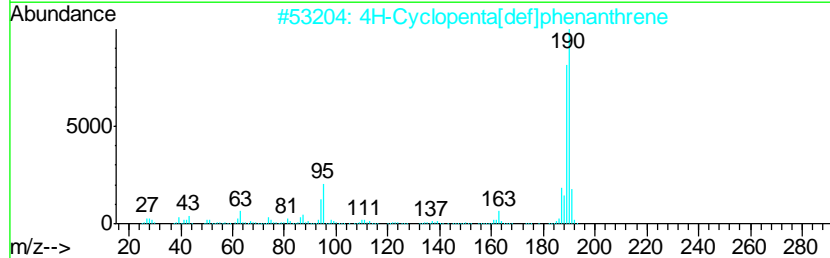
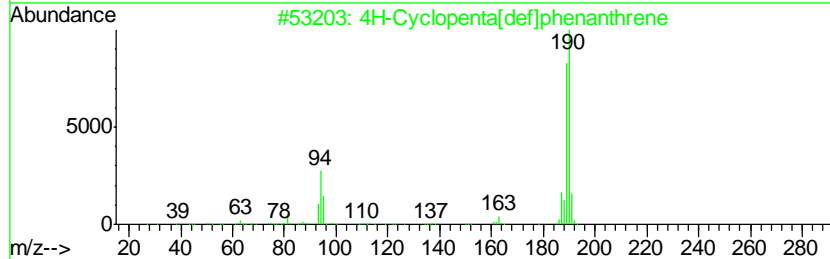
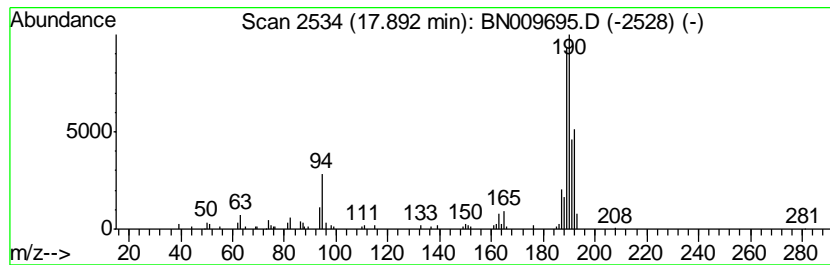
TIC Library : C:\DATABASE\NIST11.L  
 TIC Integration Parameters: LSCINT.P

\*\*\*\*\*  
 Peak Number 4 4H-Cyclopenta[def]phenanthrene Concentration Rank 3

R.T.	EstConc	Area	Relative to ISTD	R.T.
17.89	2.81 ng/ul	245954	Phenanthrene-d10	16.82

Hit#	of	Tentative ID	MW	MolForm	CAS#	Qual
1	5	4H-Cyclopenta[def]phenanthrene	190	C15H10	000203-64-5	70
2		4H-Cyclopenta[def]phenanthrene	190	C15H10	000203-64-5	60
3		4H-Cyclopenta[def]phenanthrene	190	C15H10	000203-64-5	50
4		3,5-Dichlorobenzoic acid	190	C7H4Cl2O2	000051-36-5	27
5		5H-Dibenzo[a,d]cycloheptene	192	C15H12	000256-81-5	25





Data Path : Z:\SVOASRV\HPCHEM1\BNA\_N\DATA\BN021020\  
Data File : BN009695.D  
Acq On : 10 Feb 2020 21:00  
Operator : CG/JU  
Sample : L1324-15MEDL2 40X  
Misc :  
ALS Vial : 18 Sample Multiplier: 1

Instrument :  
BNA\_N  
ClientSampleId :  
GAT70MEDL2

Quant Method : Z:\SVOASRV\HPCHEM1\BNA\_N\METHODS\SOM-EPA-BN020320MA.M  
Quant Title : SVOA CALIBRATION

TIC Library : C:\DATABASE\NIST11.L  
TIC Integration Parameters: LSCINT.P

TIC Top Hit name	RT	EstConc	Units	Response	--Internal Standard--			
					#	RT	Resp	Conc
Benzene, 1-propynyl-	7.95	5.1	ng/ul	208637	1	7.43	812165	20.0
Naphthalene, 1-me...	12.07	7.5	ng/ul	445553	2	10.17	1180650	20.0
Naphthalene, 2,3-...	13.39	2.1	ng/ul	161651	3	14.06	1545440	20.0
4H-Cyclopenta[def...	17.89	2.8	ng/ul	245954	4	16.82	1748150	20.0