

Data Path : Z:\svoasrv\HPCHEM1\BNA\_N\Data\BN021823\  
 Data File : BN024072.D  
 Acq On : 17 Feb 2023 19:30  
 Operator : CG/JU  
 Sample : 01559-06  
 Misc :  
 ALS Vial : 6 Sample Multiplier: 1

Instrument :  
 BNA\_N  
 ClientSampleId :  
 BP-VPB-RW10-GW-768-770

Quant Time: Feb 18 02:03:13 2023  
 Quant Method : Z:\svoasrv\HPCHEM1\BNA\_N\Methods\8270-SIM-BN020723.M  
 Quant Title : ASP BNA STANDARDS FOR 5 POINT CALIBRATION  
 QLast Update : Wed Feb 15 02:55:51 2023  
 Response via : Initial Calibration

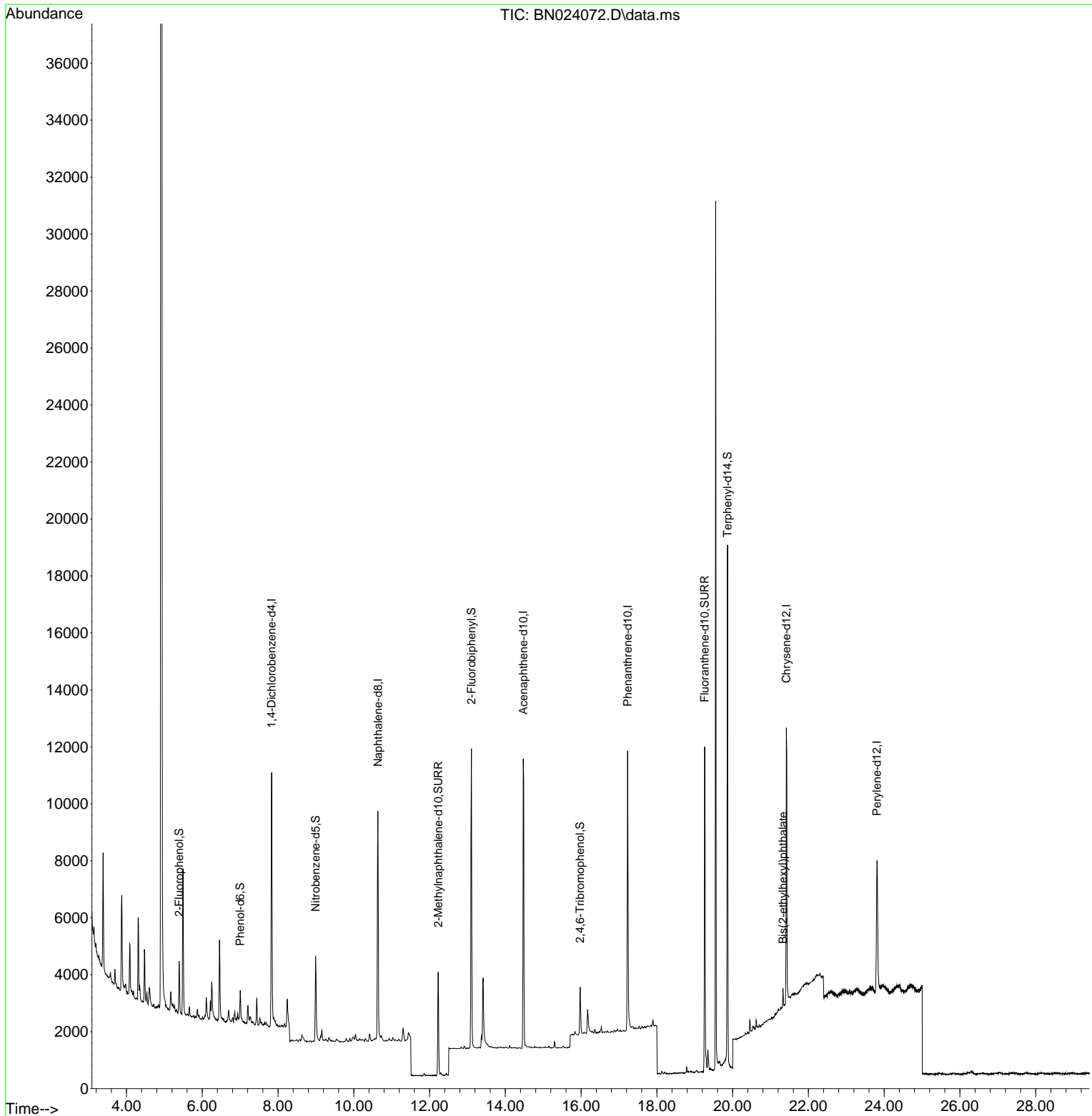
Compound	R.T.	QIon	Response	Conc	Units	Dev(Min)	
Internal Standards							
1) 1,4-Dichlorobenzene-d4	7.833	152	4133	0.400	ng	0.00	
7) Naphthalene-d8	10.637	136	10563	0.400	ng	0.00	
13) Acenaphthene-d10	14.474	164	6131	0.400	ng	-0.01	
19) Phenanthrene-d10	17.228	188	13289	0.400	ng	# 0.00	
29) Chrysene-d12	21.419	240	9763	0.400	ng	0.00	
35) Perylene-d12	23.811	264	7662	0.400	ng	# 0.00	
System Monitoring Compounds							
4) 2-Fluorophenol	5.392	112	1366	0.159	ng	0.00	
5) Phenol-d6	7.002	99	1041	0.103	ng	0.00	
8) Nitrobenzene-d5	8.993	82	2630	0.310	ng	-0.01	
11) 2-Methylnaphthalene-d10	12.227	152	4838	0.330	ng	0.00	
14) 2,4,6-Tribromophenol	15.975	330	985	0.312	ng	-0.01	
15) 2-Fluorobiphenyl	13.105	172	9023	0.372	ng	0.00	
27) Fluoranthene-d10	19.262	212	13004	0.403	ng	0.00	
31) Terphenyl-d14	19.861	244	13218	0.725	ng	0.00	
Target Compounds							
34) Bis(2-ethylhexyl)phtha...	21.329	149	659	0.046	ng	# 96	Qvalue

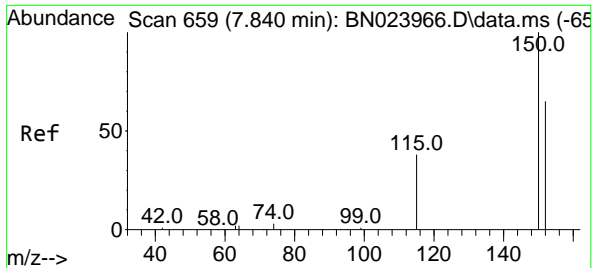
(#) = qualifier out of range (m) = manual integration (+) = signals summed

Data Path : Z:\svoasrv\HPCHEM1\BNA\_N\Data\BN021823\  
 Data File : BN024072.D  
 Acq On : 17 Feb 2023 19:30  
 Operator : CG/JU  
 Sample : 01559-06  
 Misc :  
 ALS Vial : 6 Sample Multiplier: 1

Instrument :  
 BNA\_N  
 ClientSampleId :  
 BP-VPB-RW10-GW-768-770

Quant Time: Feb 18 02:03:13 2023  
 Quant Method : Z:\svoasrv\HPCHEM1\BNA\_N\Methods\8270-SIM-BN020723.M  
 Quant Title : ASP BNA STANDARDS FOR 5 POINT CALIBRATION  
 QLast Update : Wed Feb 15 02:55:51 2023  
 Response via : Initial Calibration

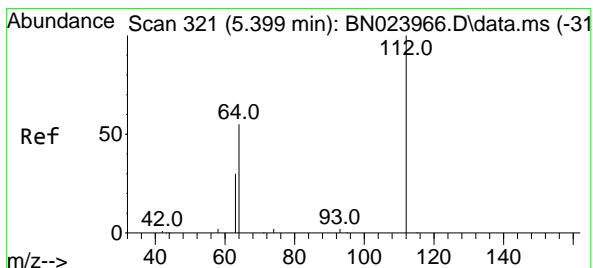
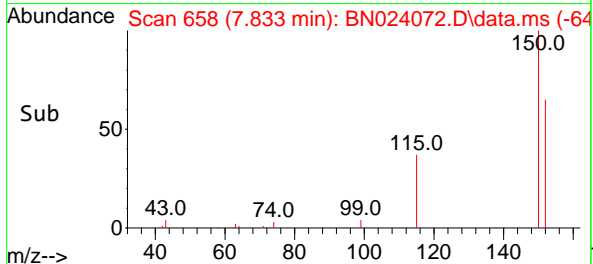
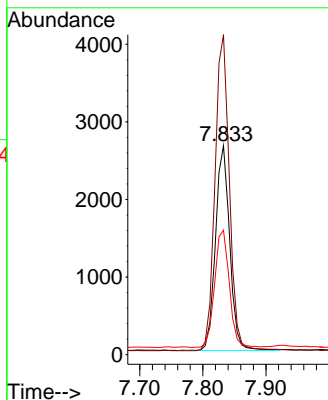
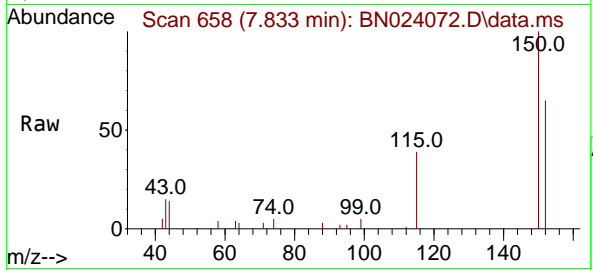




#1  
 1,4-Dichlorobenzene-d4  
 Concen: 0.400 ng  
 RT: 7.833 min Scan# 61  
 Delta R.T. -0.000 min  
 Lab File: BN024072.D  
 Acq: 17 Feb 2023 19:30

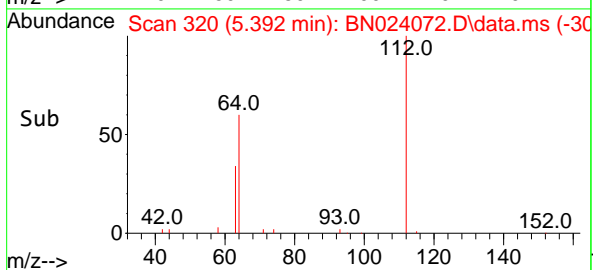
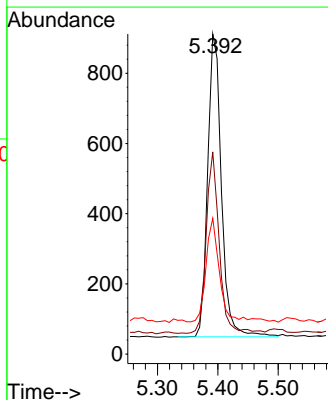
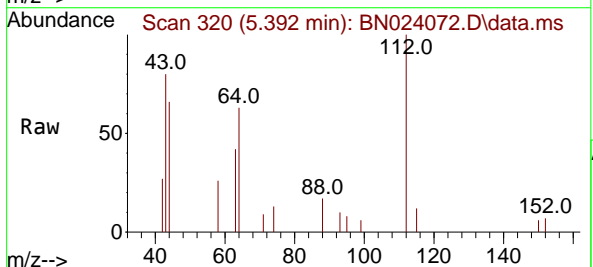
Instrument :  
 BNA\_N  
 ClientSampleId :  
 BP-VPB-RW10-GW-768-770

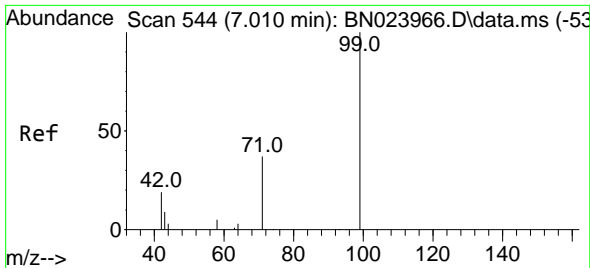
Tgt Ion:152 Resp: 4133  
 Ion Ratio Lower Upper  
 152 100  
 150 153.1 121.8 182.6  
 115 59.6 47.7 71.5



#4  
 2-Fluorophenol  
 Concen: 0.159 ng  
 RT: 5.392 min Scan# 320  
 Delta R.T. -0.007 min  
 Lab File: BN024072.D  
 Acq: 17 Feb 2023 19:30

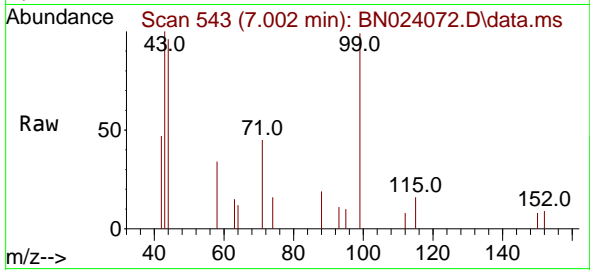
Tgt Ion:112 Resp: 1366  
 Ion Ratio Lower Upper  
 112 100  
 64 56.7 44.8 67.2  
 63 34.6 25.1 37.7



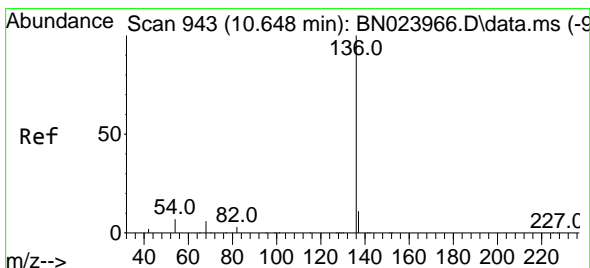
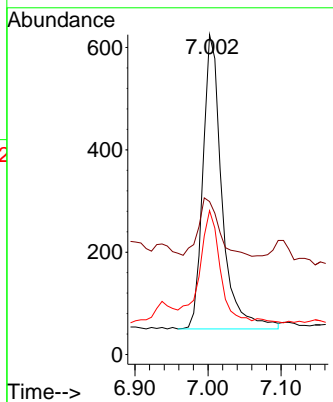
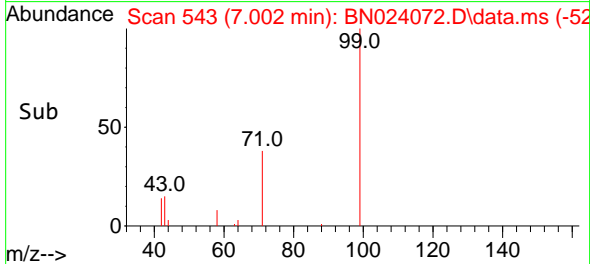


#5  
 Phenol-d6  
 Concen: 0.103 ng  
 RT: 7.002 min Scan# 54  
 Delta R.T. 0.000 min  
 Lab File: BN024072.D  
 Acq: 17 Feb 2023 19:30

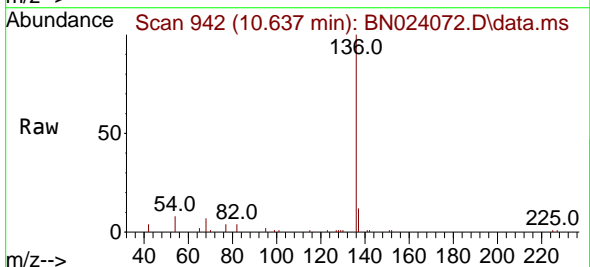
Instrument :  
 BNA\_N  
 ClientSampleId :  
 BP-VPB-RW10-GW-768-770



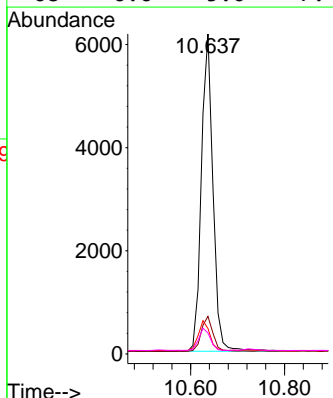
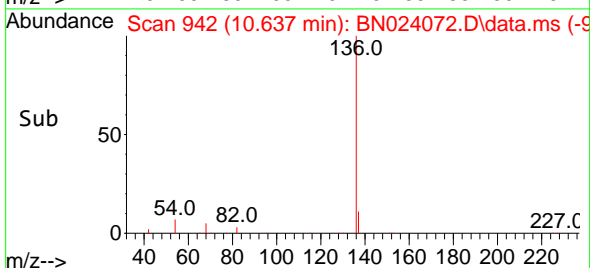
Tgt Ion: 99 Resp: 1041  
 Ion Ratio Lower Upper  
 99 100  
 42 22.3 17.0 25.6  
 71 38.9 29.0 43.4

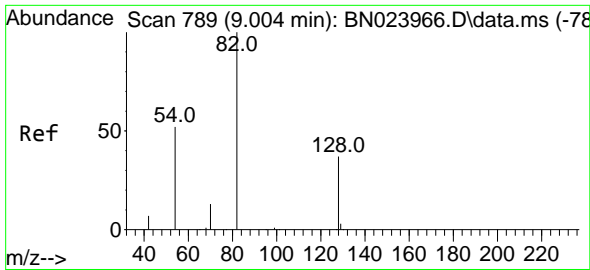


#7  
 Naphthalene-d8  
 Concen: 0.400 ng  
 RT: 10.637 min Scan# 942  
 Delta R.T. 0.000 min  
 Lab File: BN024072.D  
 Acq: 17 Feb 2023 19:30



Tgt Ion: 136 Resp: 10563  
 Ion Ratio Lower Upper  
 136 100  
 137 11.8 9.1 13.7  
 54 7.9 5.8 8.8  
 68 6.6 5.0 7.4



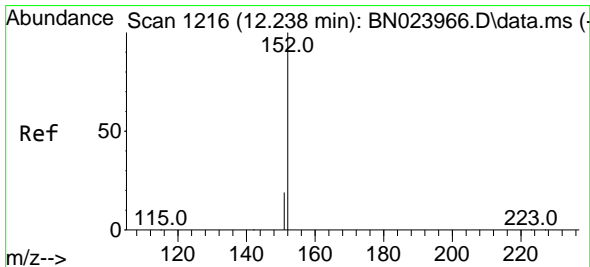
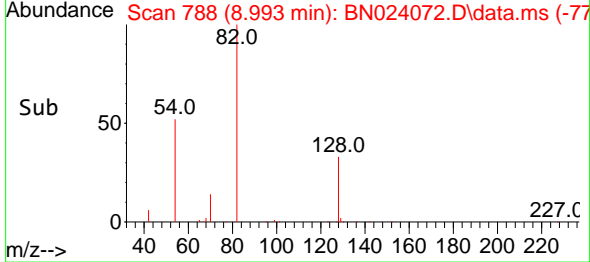
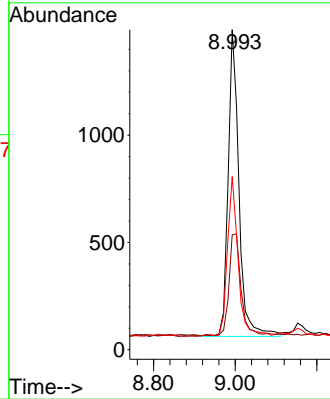
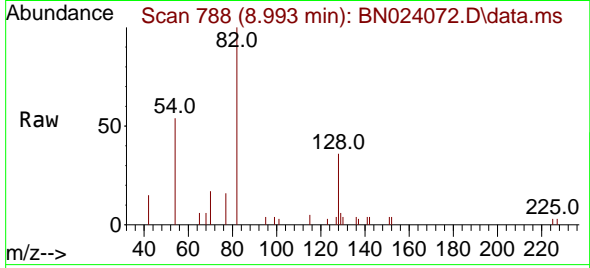


#8  
 Nitrobenzene-d5  
 Concen: 0.310 ng  
 RT: 8.993 min Scan# 788  
 Delta R.T. -0.011 min  
 Lab File: BN024072.D  
 Acq: 17 Feb 2023 19:30

Instrument : BNA\_N  
 ClientSampleId : BP-VPB-RW10-GW-768-770

Tgt Ion: 82 Resp: 2630

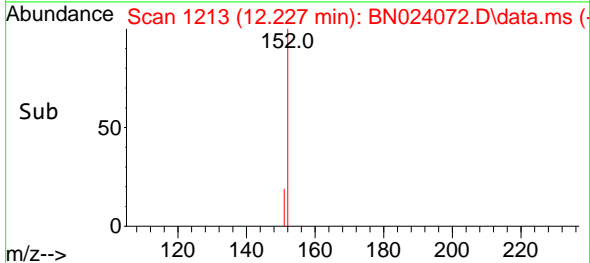
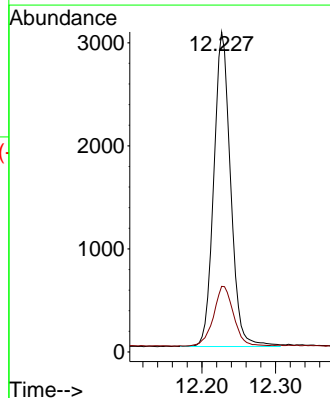
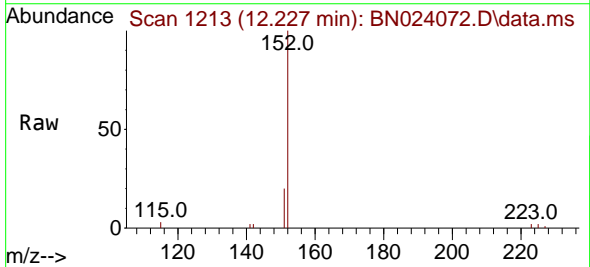
Ion	Ratio	Lower	Upper
82	100		
128	35.9	31.5	47.3
54	54.1	42.8	64.2

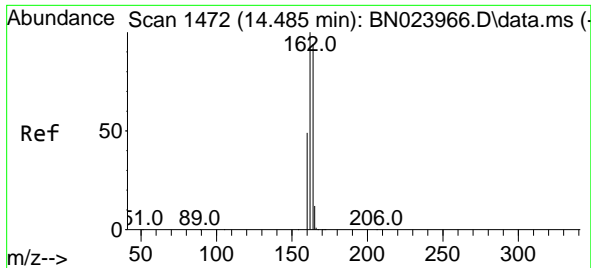


#11  
 2-Methylnaphthalene-d10  
 Concen: 0.330 ng  
 RT: 12.227 min Scan# 1213  
 Delta R.T. -0.008 min  
 Lab File: BN024072.D  
 Acq: 17 Feb 2023 19:30

Tgt Ion: 152 Resp: 4838

Ion	Ratio	Lower	Upper
152	100		
151	22.7	16.6	24.8



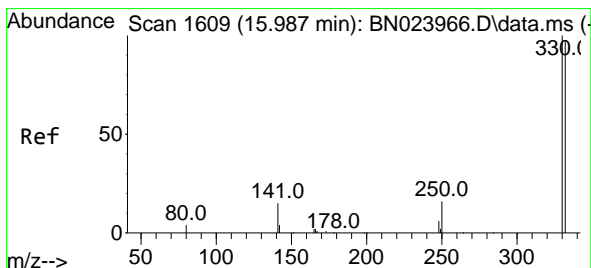
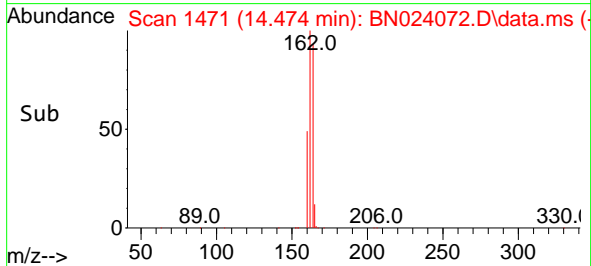
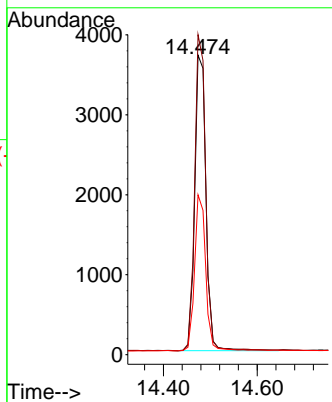
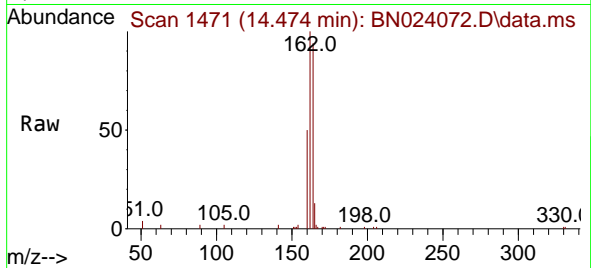


#13  
 Acenaphthene-d10  
 Concen: 0.400 ng  
 RT: 14.474 min Scan# 14  
 Delta R.T. -0.011 min  
 Lab File: BN024072.D  
 Acq: 17 Feb 2023 19:30

Instrument :  
 BNA\_N  
 ClientSampleId :  
 BP-VPB-RW10-GW-768-770

Tgt Ion:164 Resp: 6131

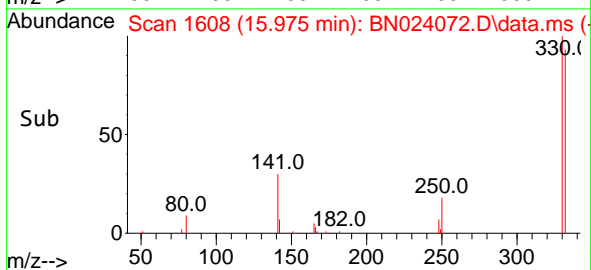
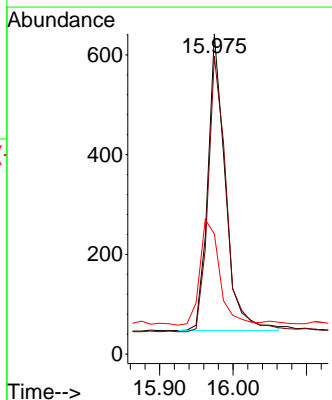
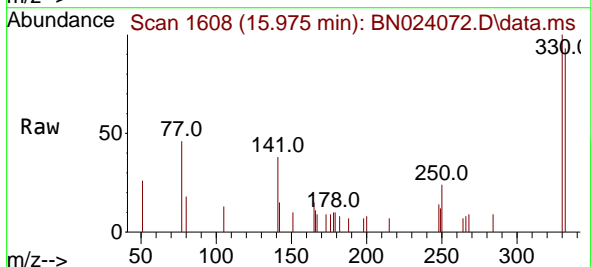
Ion	Ratio	Lower	Upper
164	100		
162	106.8	84.8	127.2
160	53.4	42.0	63.0

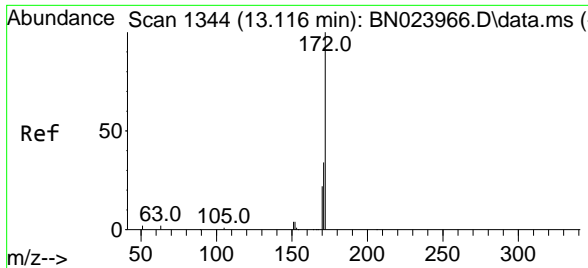


#14  
 2,4,6-Tribromophenol  
 Concen: 0.312 ng  
 RT: 15.975 min Scan# 1608  
 Delta R.T. -0.012 min  
 Lab File: BN024072.D  
 Acq: 17 Feb 2023 19:30

Tgt Ion:330 Resp: 985

Ion	Ratio	Lower	Upper
330	100		
332	97.7	77.7	116.5
141	40.4	26.6	39.8#



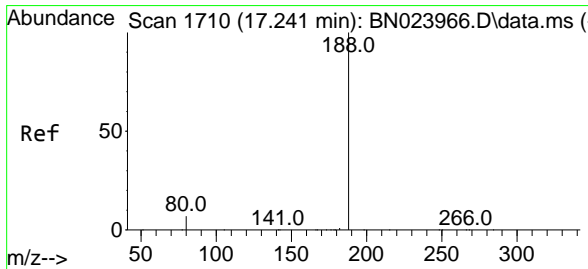
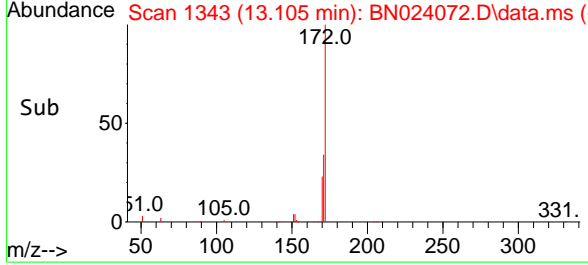
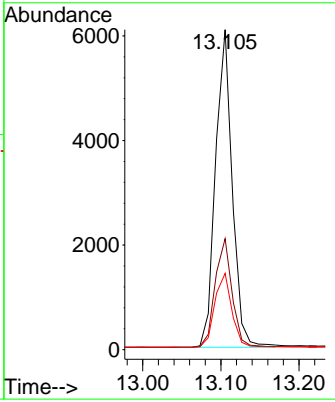
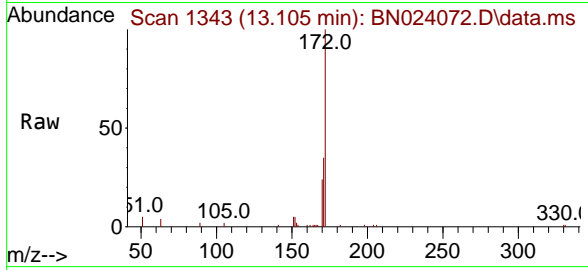


#15  
 2-Fluorobiphenyl  
 Concen: 0.372 ng  
 RT: 13.105 min Scan# 11  
 Delta R.T. 0.000 min  
 Lab File: BN024072.D  
 Acq: 17 Feb 2023 19:30

Instrument : BNA\_N  
 ClientSampleId : BP-VPB-RW10-GW-768-770

Tgt Ion:172 Resp: 9023

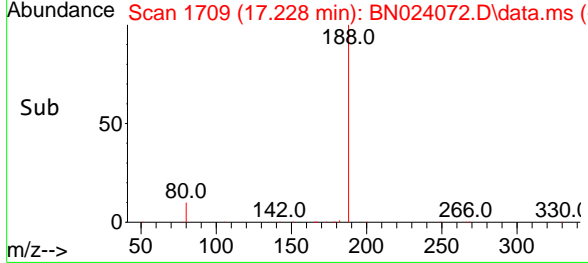
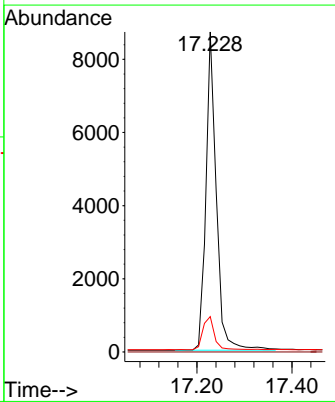
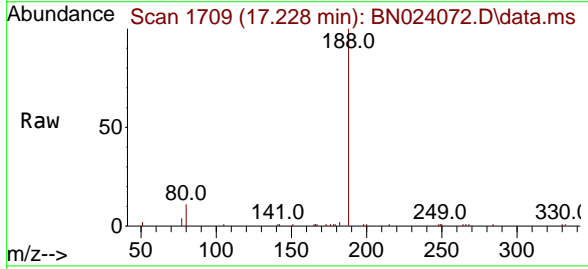
Ion	Ratio	Lower	Upper
172	100		
171	34.7	27.4	41.2
170	23.8	18.2	27.4

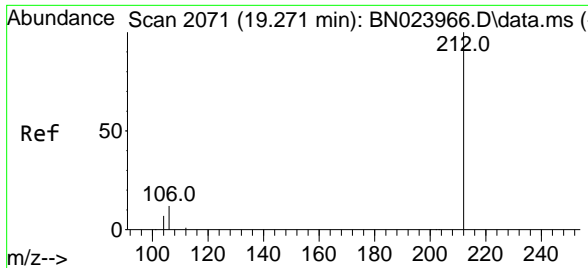


#19  
 Phenanthrene-d10  
 Concen: 0.400 ng  
 RT: 17.228 min Scan# 1709  
 Delta R.T. 0.000 min  
 Lab File: BN024072.D  
 Acq: 17 Feb 2023 19:30

Tgt Ion:188 Resp: 13289

Ion	Ratio	Lower	Upper
188	100		
94	0.0	0.0	0.0
80	11.0	6.1	9.1#

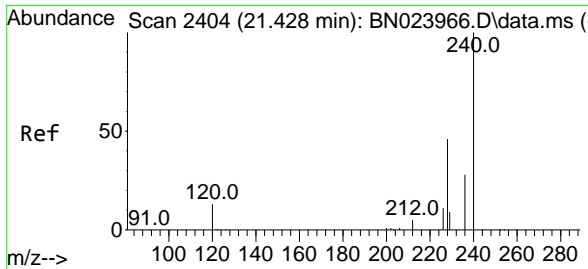
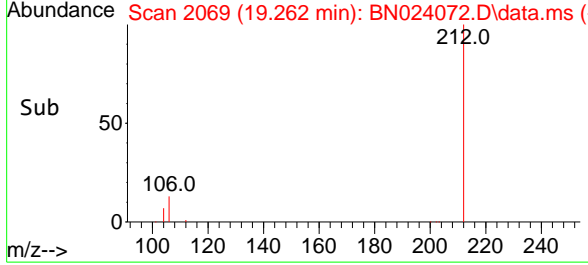
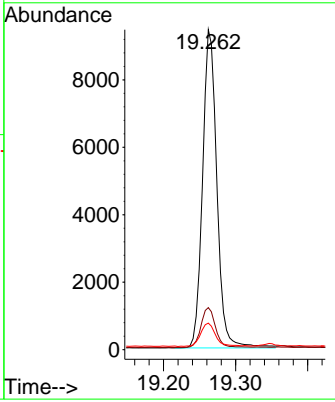
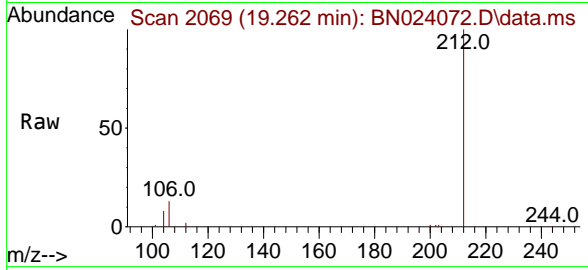




#27  
 Fluoranthene-d10  
 Concen: 0.403 ng  
 RT: 19.262 min Scan# 2071  
 Delta R.T. -0.004 min  
 Lab File: BN024072.D  
 Acq: 17 Feb 2023 19:30

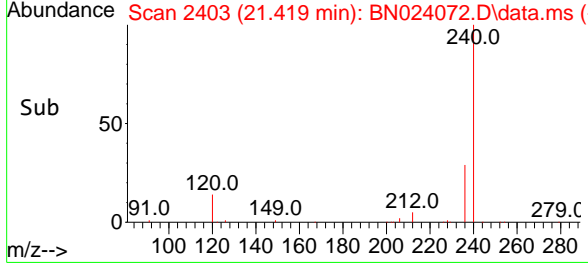
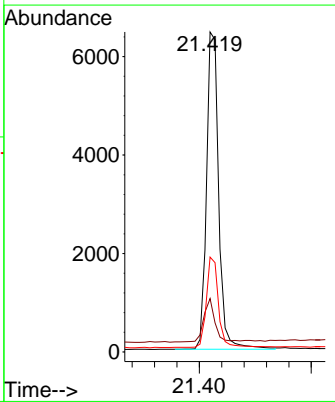
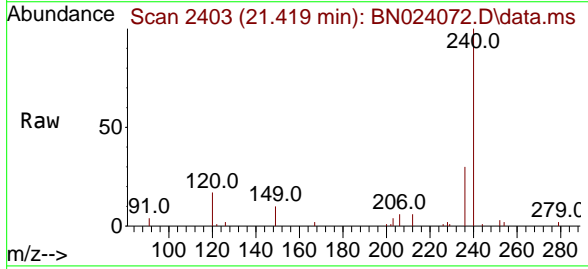
Instrument : BNA\_N  
 ClientSampleId : BP-VPB-RW10-GW-768-770

Tgt Ion	Resp	Lower	Upper
212	13004		
106	12.7	9.2	13.8
104	7.8	5.7	8.5

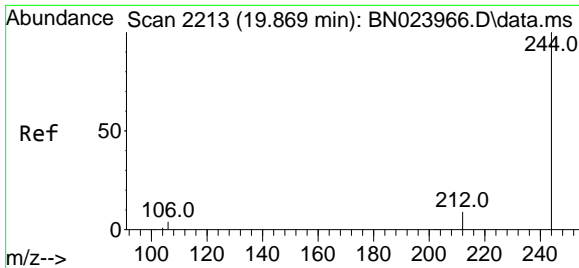


#29  
 Chrysene-d12  
 Concen: 0.400 ng  
 RT: 21.419 min Scan# 2403  
 Delta R.T. -0.009 min  
 Lab File: BN024072.D  
 Acq: 17 Feb 2023 19:30

Tgt Ion	Resp	Lower	Upper
240	9763		
120	16.7	11.4	17.0
236	29.7	23.2	34.8





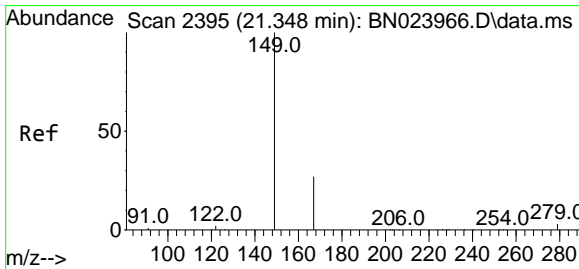
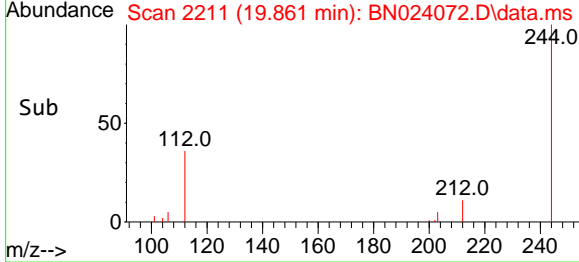
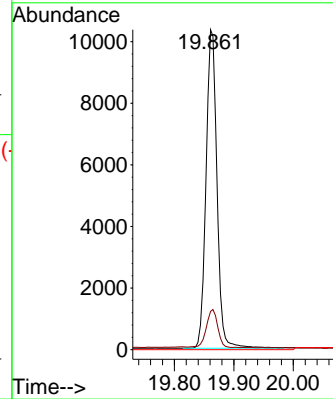
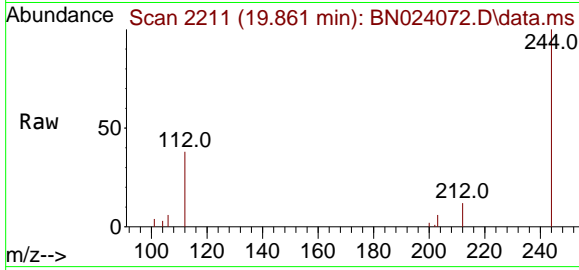


#31  
 Terphenyl-d14  
 Concen: 0.725 ng  
 RT: 19.861 min Scan# 2111  
 Delta R.T. -0.004 min  
 Lab File: BN024072.D  
 Acq: 17 Feb 2023 19:30

Instrument : BNA\_N  
 ClientSampleId : BP-VPB-RW10-GW-768-770

Tgt Ion:244 Resp: 13218

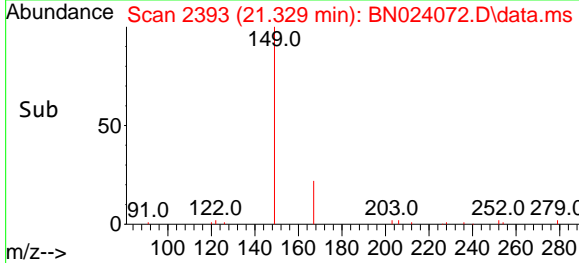
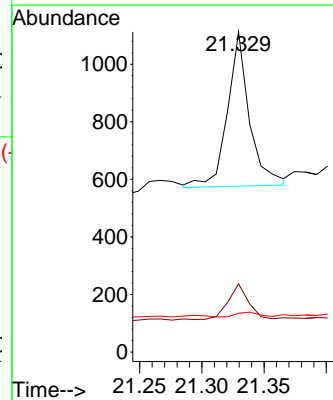
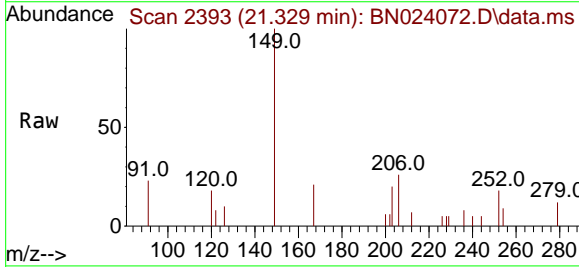
Ion	Ratio	Lower	Upper
244	100		
212	12.0	7.7	11.5#
122	0.0	0.0	0.0

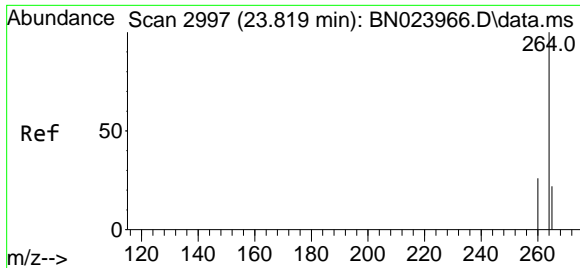


#34  
 Bis(2-ethylhexyl)phthalate  
 Concen: 0.046 ng  
 RT: 21.329 min Scan# 2393  
 Delta R.T. -0.009 min  
 Lab File: BN024072.D  
 Acq: 17 Feb 2023 19:30

Tgt Ion:149 Resp: 659

Ion	Ratio	Lower	Upper
149	100		
167	24.3	21.1	31.7
279	3.0	3.1	4.7#





#35  
 Perylene-d12  
 Concen: 0.400 ng  
 RT: 23.811 min Scan# 2994  
 Delta R.T. -0.009 min  
 Lab File: BN024072.D  
 Acq: 17 Feb 2023 19:30

Instrument :  
 BNA\_N  
 ClientSampleId :  
 BP-VPB-RW10-GW-768-770

Tgt Ion:264 Resp: 7662

Ion	Ratio	Lower	Upper
264	100		
260	27.4	21.4	32.0
265	83.5	41.4	62.0

