

Data Path : Z:\svoasrv\HPCHEM1\BNA_N\Data\BN022422\
 Data File : BN018720.D
 Acq On : 24 Feb 2022 22:31
 Operator : CG/JU
 Sample : SSTDCCC0.4
 Misc :
 ALS Vial : 14 Sample Multiplier: 1

Instrument :
 BNA_N
 ClientSampleId :
 SSTDCCC0.4EC

Quant Time: Feb 25 00:49:37 2022
 Quant Method : Z:\SVOASRV\HPCHEM1\BNA_N\METHODS\8270-SIM-BN022222.M
 Quant Title : ASP BNA STANDARDS FOR 5 POINT CALIBRATION
 QLast Update : Tue Feb 22 16:23:51 2022
 Response via : Initial Calibration

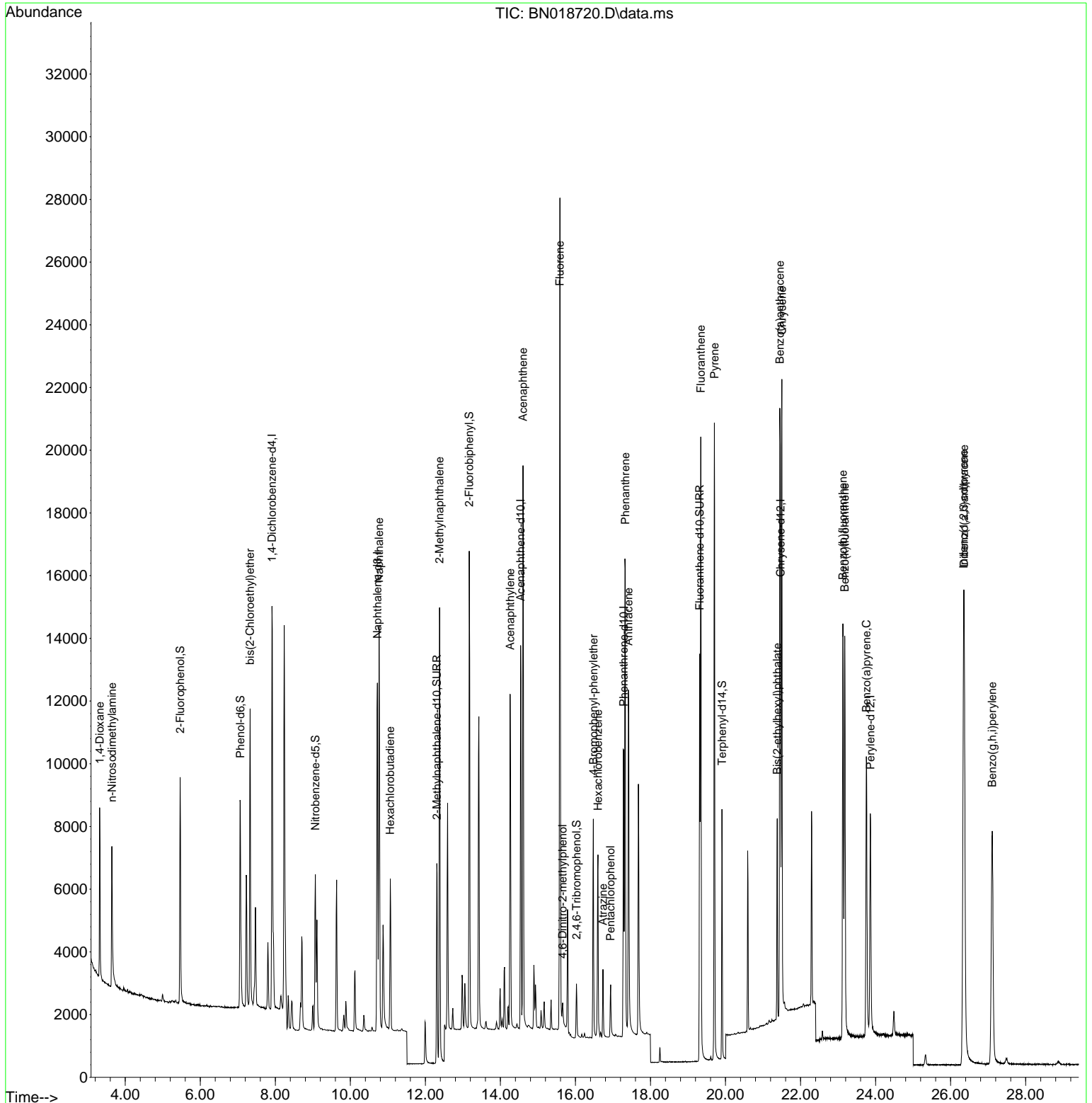
Compound	R.T.	QIon	Response	Conc	Units	Dev(Min)	
Internal Standards							
1) 1,4-Dichlorobenzene-d4	7.912	152	6509	0.400	ng	0.00	
7) Naphthalene-d8	10.722	136	15425	0.400	ng	# 0.00	
13) Acenaphthene-d10	14.538	164	7523	0.400	ng	-0.01	
19) Phenanthrene-d10	17.287	188	14026	0.400	ng	0.00	
29) Chrysene-d12	21.467	240	10895	0.400	ng	# 0.00	
35) Perylene-d12	23.861	264	10237	0.400	ng	# 0.00	
System Monitoring Compounds							
4) 2-Fluorophenol	5.464	112	5839	0.392	ng	0.00	
5) Phenol-d6	7.067	99	6571	0.383	ng	0.00	
8) Nitrobenzene-d5	9.067	82	4166	0.349	ng	0.00	
11) 2-Methylnaphthalene-d10	12.306	152	8766	0.377	ng	0.00	
14) 2,4,6-Tribromophenol	16.026	330	1038	0.353	ng	0.00	
15) 2-Fluorobiphenyl	13.170	172	13449	0.377	ng	-0.01	
27) Fluoranthene-d10	19.312	212	14388	0.378	ng	0.00	
31) Terphenyl-d14	19.906	244	8467	0.358	ng	0.00	
Target Compounds							
2) 1,4-Dioxane	3.319	88	3042	0.402	ng	# 60	Qvalue
3) n-Nitrosodimethylamine	3.644	42	3087	0.412	ng	# 87	
6) bis(2-Chloroethyl)ether	7.327	93	6906	0.392	ng	98	
9) Naphthalene	10.765	128	17158	0.385	ng	98	
10) Hexachlorobutadiene	11.064	225	3997	0.373	ng	# 100	
12) 2-Methylnaphthalene	12.378	142	11524	0.387	ng	97	
16) Acenaphthylene	14.260	152	12378	0.347	ng	99	
17) Acenaphthene	14.602	154	9076	0.368	ng	99	
18) Fluorene	15.586	166	11023	0.372	ng	99	
20) 4,6-Dinitro-2-methylph...	15.660	198	634	0.355	ng	100	
21) 4-Bromophenyl-phenylether	16.477	248	3569	0.358	ng	95	
22) Hexachlorobenzene	16.600	284	4531	0.363	ng	# 86	
23) Atrazine	16.733	200	1772	0.322	ng	# 93	
24) Pentachlorophenol	16.938	266	943	0.393	ng	97	
25) Phenanthrene	17.328	178	17800	0.379	ng	100	
26) Anthracene	17.410	178	14040	0.353	ng	100	
28) Fluoranthene	19.341	202	18474	0.377	ng	# 97	
30) Pyrene	19.704	202	18683	0.384	ng	100	
32) Benzo(a)anthracene	21.449	228	14814	0.359	ng	99	
33) Chrysene	21.503	228	17826	0.387	ng	99	
34) Bis(2-ethylhexyl)phtha...	21.378	149	5648	0.336	ng	# 94	
36) Indeno(1,2,3-cd)pyrene	26.346	276	20906	0.387	ng	# 88	
37) Benzo(b)fluoranthene	23.130	252	17048	0.367	ng	# 91	
38) Benzo(k)fluoranthene	23.176	252	17131	0.372	ng	# 93	
39) Benzo(a)pyrene	23.755	252	13741	0.371	ng	# 84	
40) Dibenzo(a,h)anthracene	26.360	278	16034	0.380	ng	# 91	
41) Benzo(g,h,i)perylene	27.109	276	17151	0.371	ng	# 88	

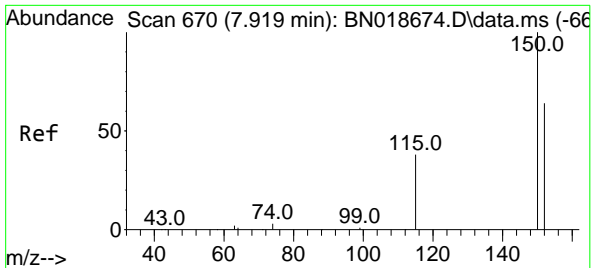
(#) = qualifier out of range (m) = manual integration (+) = signals summed

Data Path : Z:\svoasrv\HPCHEM1\BNA_N\Data\BN022422\
 Data File : BN018720.D
 Acq On : 24 Feb 2022 22:31
 Operator : CG/JU
 Sample : SSTDCCC0.4
 Misc :
 ALS Vial : 14 Sample Multiplier: 1

Instrument :
 BNA_N
 ClientSampleId :
 SSTDCCC0.4EC

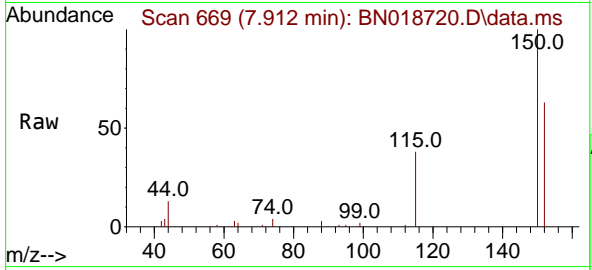
Quant Time: Feb 25 00:49:37 2022
 Quant Method : Z:\SVOASRV\HPCHEM1\BNA_N\METHODS\8270-SIM-BN022222.M
 Quant Title : ASP BNA STANDARDS FOR 5 POINT CALIBRATION
 QLast Update : Tue Feb 22 16:23:51 2022
 Response via : Initial Calibration



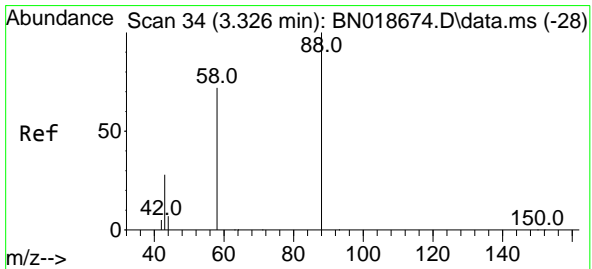
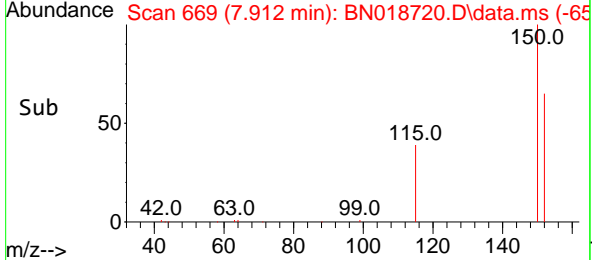
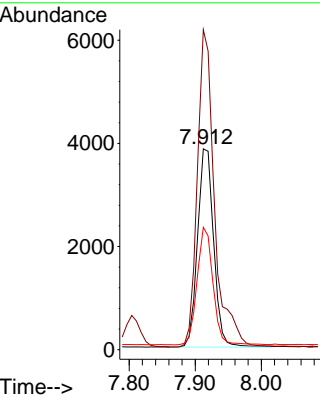


#1
 1,4-Dichlorobenzene-d4
 Concen: 0.400 ng
 RT: 7.912 min Scan# 60
 Delta R.T. -0.007 min
 Lab File: BN018720.D
 Acq: 24 Feb 2022 22:31

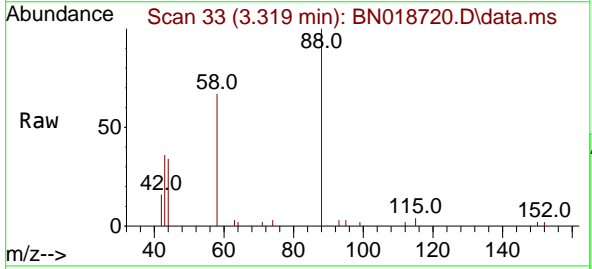
Instrument : BNA_N
 ClientSampleId : SSTDCCC0.4EC



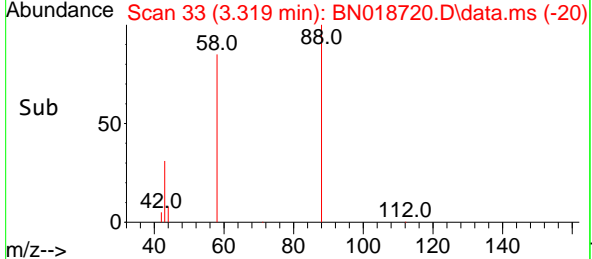
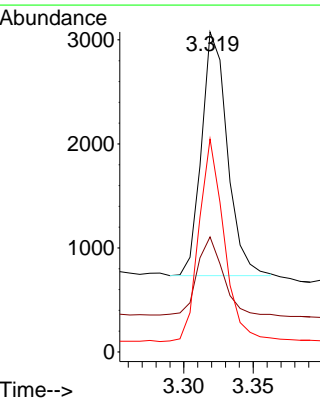
Tgt Ion:152 Resp: 6509
 Ion Ratio Lower Upper
 152 100
 150 159.3 121.7 182.5
 115 61.0 43.8 65.8

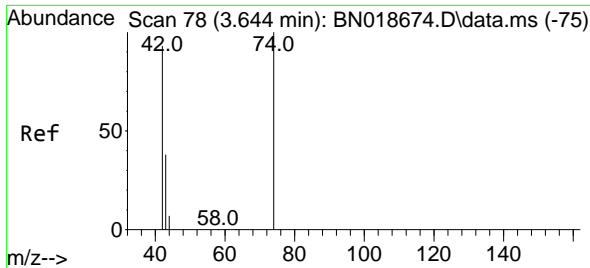


#2
 1,4-Dioxane
 Concen: 0.402 ng
 RT: 3.319 min Scan# 33
 Delta R.T. -0.007 min
 Lab File: BN018720.D
 Acq: 24 Feb 2022 22:31



Tgt Ion: 88 Resp: 3042
 Ion Ratio Lower Upper
 88 100
 43 31.6 69.7 104.5#
 58 80.7 83.8 125.8#



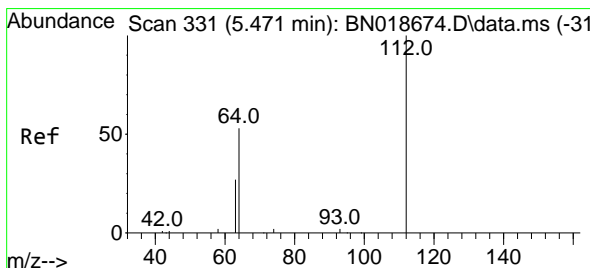
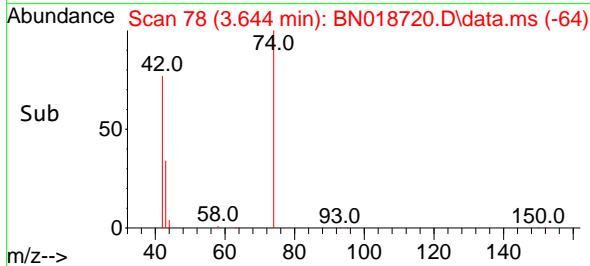
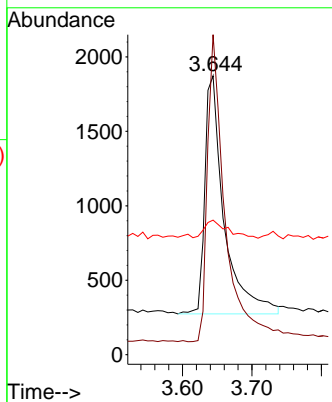
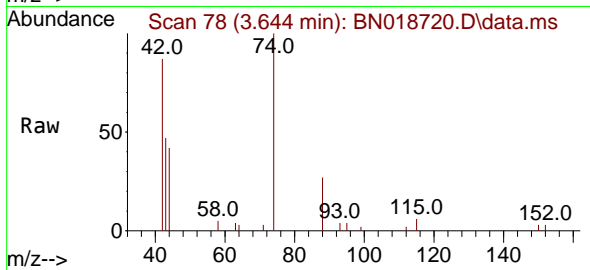


#3
 n-Nitrosodimethylamine
 Concen: 0.412 ng
 RT: 3.644 min Scan# 71
 Delta R.T. 0.000 min
 Lab File: BN018720.D
 Acq: 24 Feb 2022 22:31

Instrument :
 BNA_N
 ClientSampleId :
 SSTDCCC0.4EC

Tgt Ion: 42 Resp: 3087

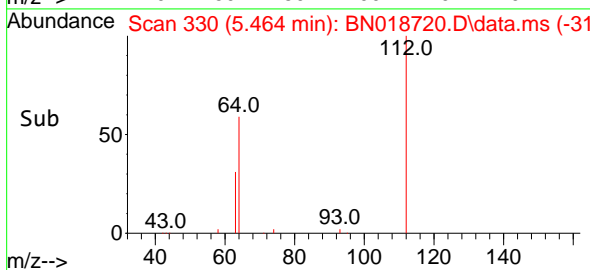
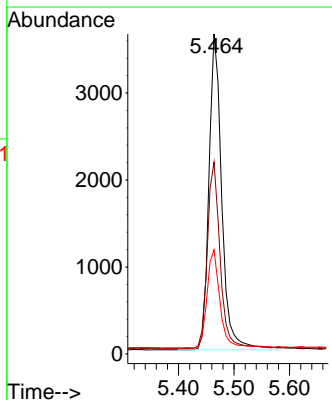
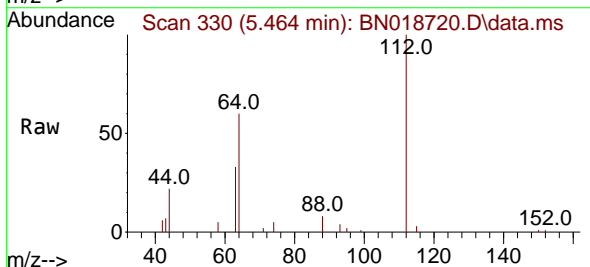
Ion	Ratio	Lower	Upper
42	100		
74	119.6	108.6	163.0
44	9.1	5.8	8.8#

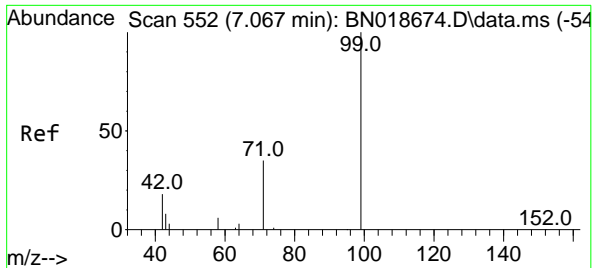


#4
 2-Fluorophenol
 Concen: 0.392 ng
 RT: 5.464 min Scan# 330
 Delta R.T. -0.007 min
 Lab File: BN018720.D
 Acq: 24 Feb 2022 22:31

Tgt Ion: 112 Resp: 5839

Ion	Ratio	Lower	Upper
112	100		
64	59.5	48.0	72.0
63	31.5	25.3	37.9

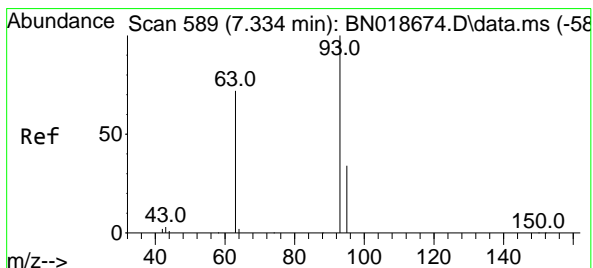
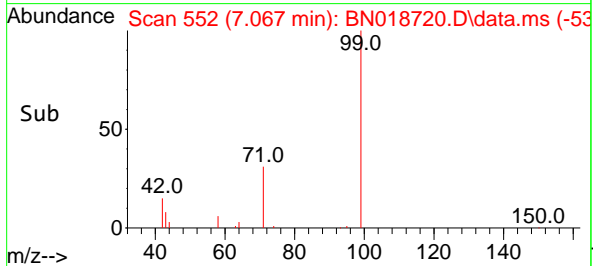
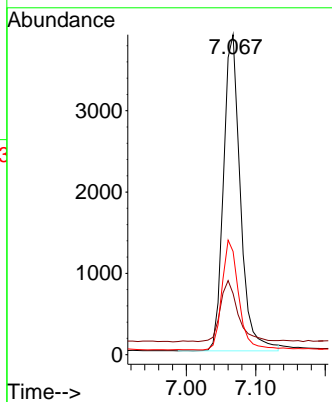
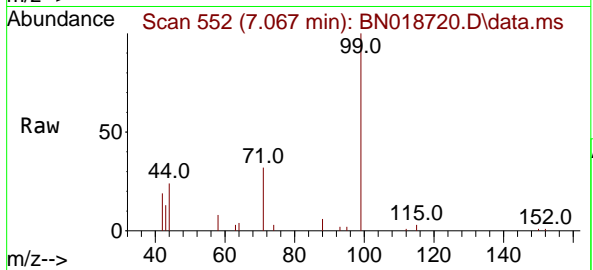




#5
 Phenol-d6
 Concen: 0.383 ng
 RT: 7.067 min Scan# 511
 Delta R.T. 0.000 min
 Lab File: BN018720.D
 Acq: 24 Feb 2022 22:31

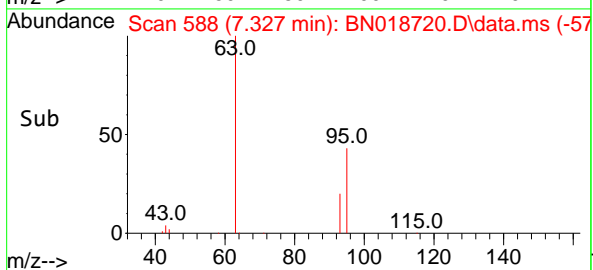
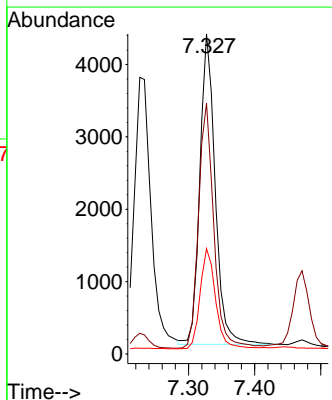
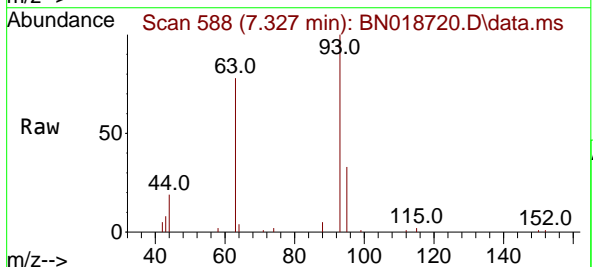
Instrument :
 BNA_N
 ClientSampleId :
 SSTDCCC0.4EC

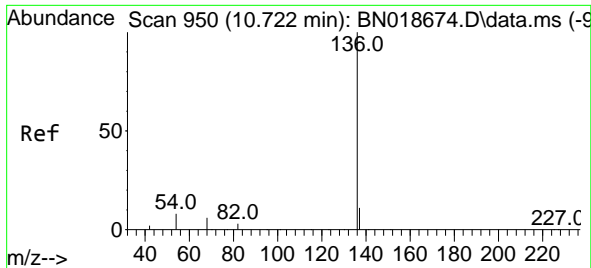
Tgt Ion	Resp	Ion Ratio	Lower	Upper
99	6571	100		
42		20.0	16.3	24.5
71		34.4	26.8	40.2



#6
 bis(2-Chloroethyl)ether
 Concen: 0.392 ng
 RT: 7.327 min Scan# 588
 Delta R.T. -0.007 min
 Lab File: BN018720.D
 Acq: 24 Feb 2022 22:31

Tgt Ion	Resp	Ion Ratio	Lower	Upper
93	6906	100		
63		79.0	61.7	92.5
95		32.9	26.2	39.4

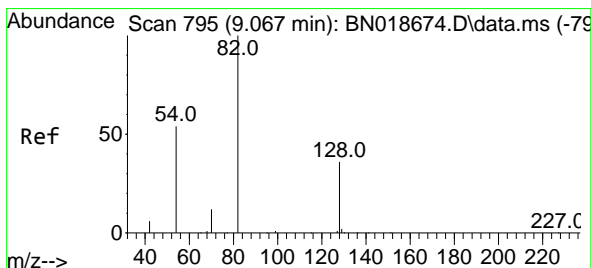
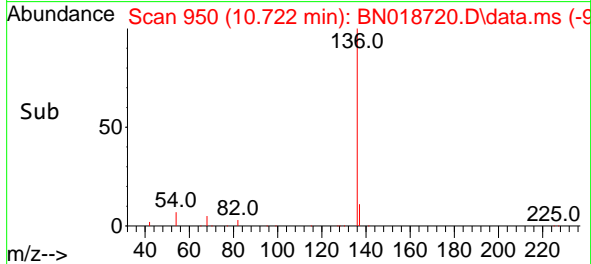
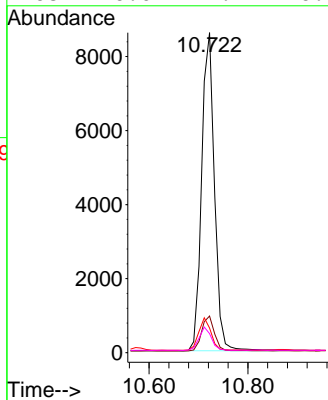
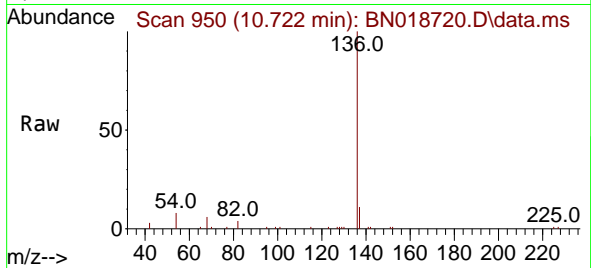




#7
 Naphthalene-d8
 Concen: 0.400 ng
 RT: 10.722 min Scan# 91
 Delta R.T. 0.000 min
 Lab File: BN018720.D
 Acq: 24 Feb 2022 22:31

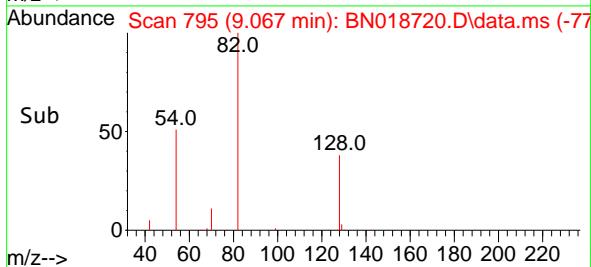
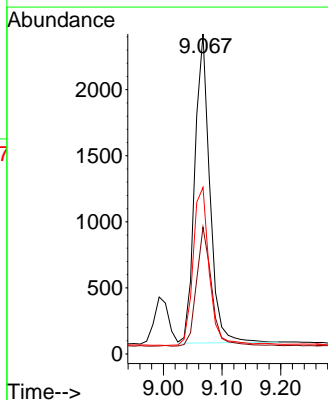
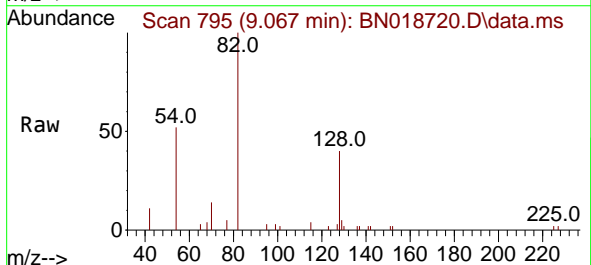
Instrument :
 BNA_N
 ClientSampleId :
 SSTDCCC0.4EC

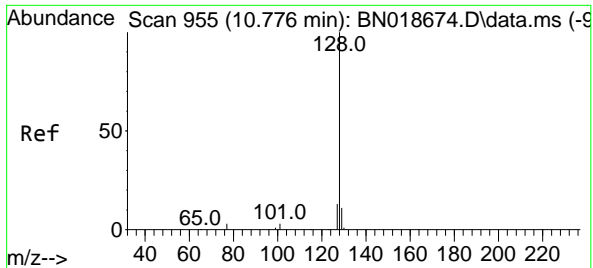
Tgt Ion	Resp	Lower	Upper
136	15425		
137	11.4	8.8	13.2
54	7.7	5.0	7.6
68	6.0	4.4	6.6



#8
 Nitrobenzene-d5
 Concen: 0.349 ng
 RT: 9.067 min Scan# 795
 Delta R.T. 0.000 min
 Lab File: BN018720.D
 Acq: 24 Feb 2022 22:31

Tgt Ion	Resp	Lower	Upper
82	4166		
128	39.6	33.7	50.5
54	52.0	36.6	55.0



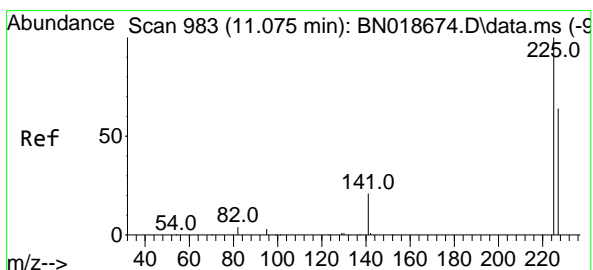
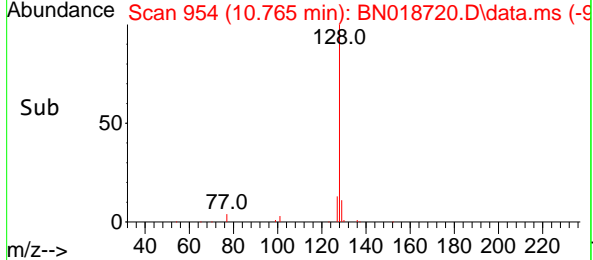
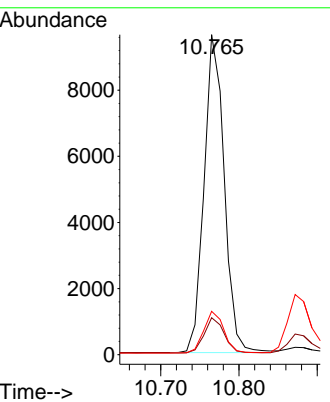
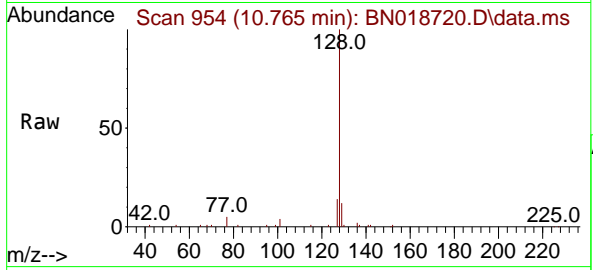


#9
Naphthalene
 Concen: 0.385 ng
 RT: 10.765 min Scan# 91
 Delta R.T. -0.011 min
 Lab File: BN018720.D
 Acq: 24 Feb 2022 22:31

Instrument :
 BNA_N
ClientSampleId :
 SSTDCCC0.4EC

Tgt Ion:128 Resp: 17158

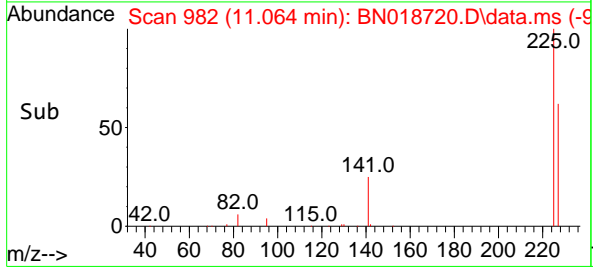
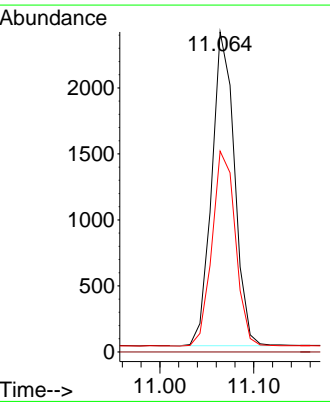
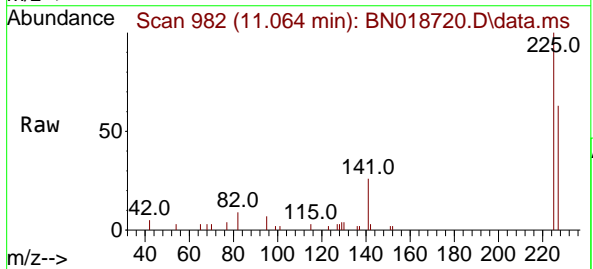
Ion	Ratio	Lower	Upper
128	100		
129	11.6	8.7	13.1
127	13.6	10.4	15.6

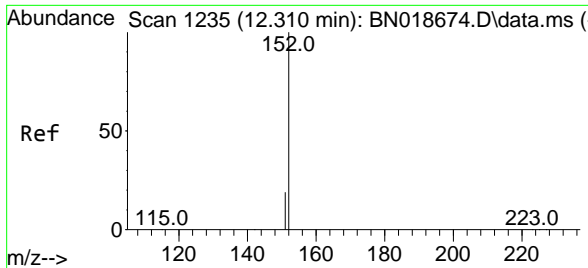


#10
Hexachlorobutadiene
 Concen: 0.373 ng
 RT: 11.064 min Scan# 982
 Delta R.T. -0.011 min
 Lab File: BN018720.D
 Acq: 24 Feb 2022 22:31

Tgt Ion:225 Resp: 3997

Ion	Ratio	Lower	Upper
225	100		
223	0.0	0.0	0.0
227	63.9	51.0	76.6

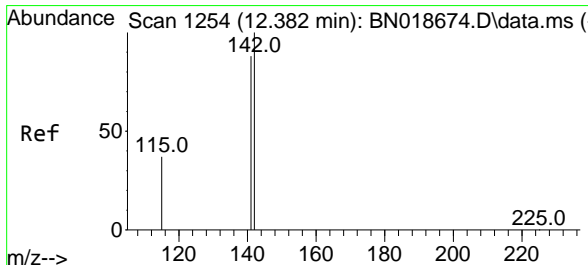
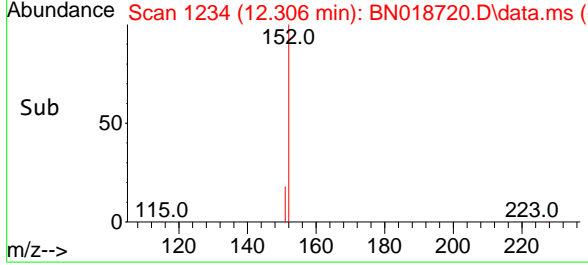
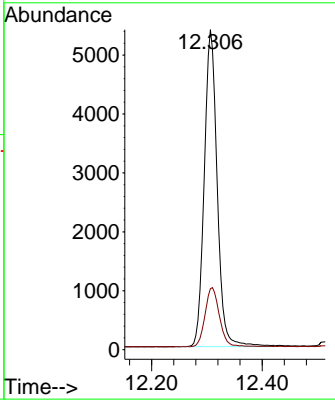
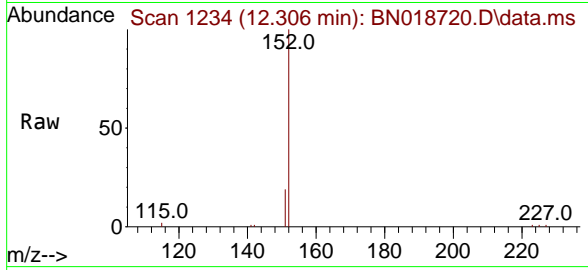




#11
 2-Methylnaphthalene-d10
 Concen: 0.377 ng
 RT: 12.306 min Scan# 11
 Delta R.T. -0.004 min
 Lab File: BN018720.D
 Acq: 24 Feb 2022 22:31

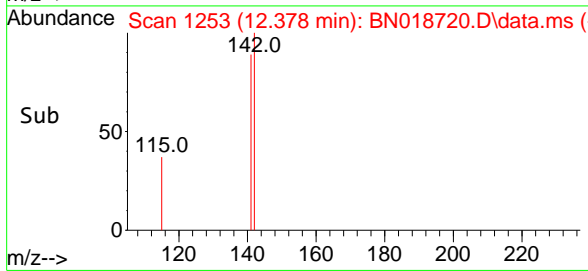
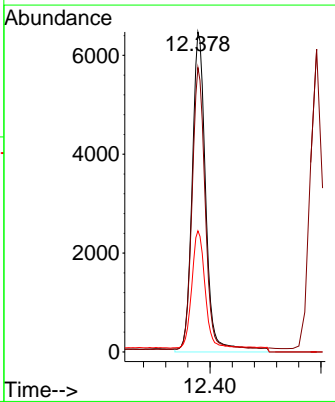
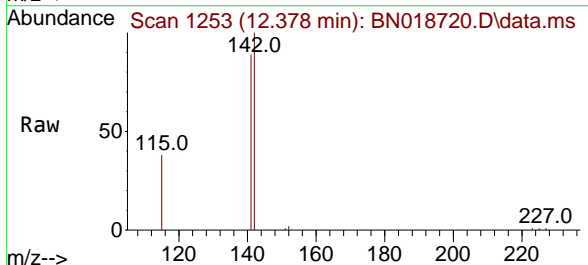
Instrument : BNA_N
 ClientSampleId : SSTDCCC0.4EC

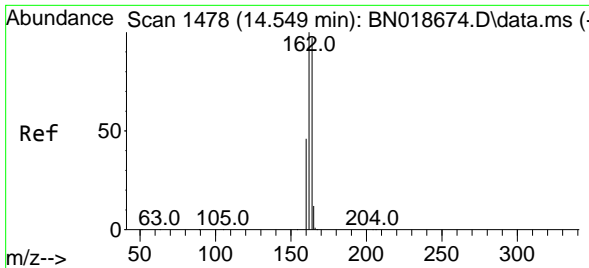
Tgt Ion:152 Resp: 8766
 Ion Ratio Lower Upper
 152 100
 151 21.0 16.2 24.2



#12
 2-Methylnaphthalene
 Concen: 0.387 ng
 RT: 12.378 min Scan# 1253
 Delta R.T. -0.004 min
 Lab File: BN018720.D
 Acq: 24 Feb 2022 22:31

Tgt Ion:142 Resp: 11524
 Ion Ratio Lower Upper
 142 100
 141 88.9 70.0 105.0
 115 37.8 27.8 41.8



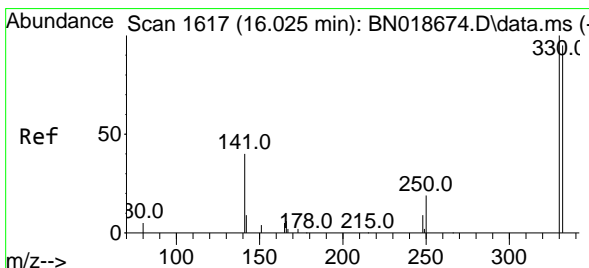
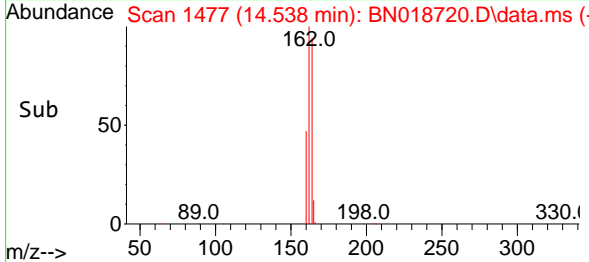
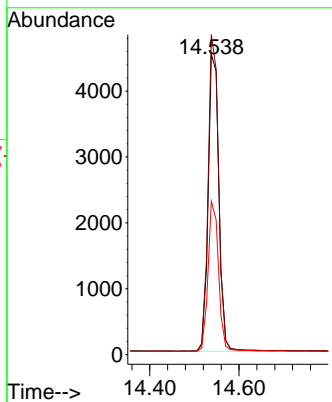
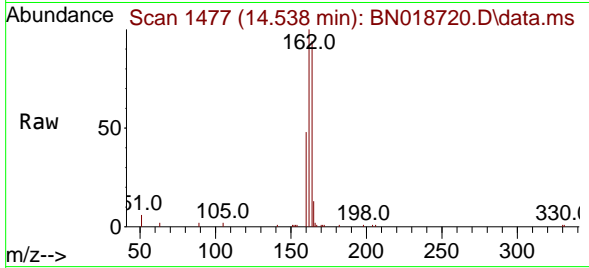


#13
 Acenaphthene-d10
 Concen: 0.400 ng
 RT: 14.538 min Scan# 14
 Delta R.T. -0.011 min
 Lab File: BN018720.D
 Acq: 24 Feb 2022 22:31

Instrument :
 BNA_N
 ClientSampleId :
 SSTDCCC0.4EC

Tgt Ion:164 Resp: 7523

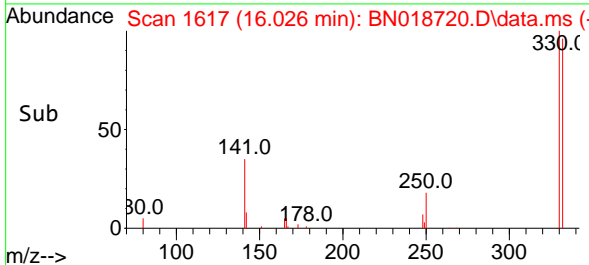
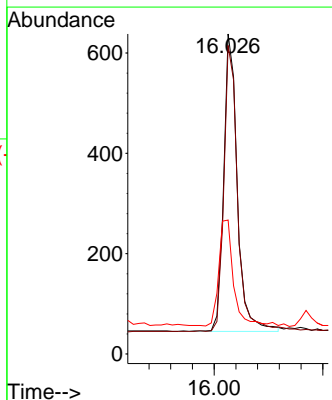
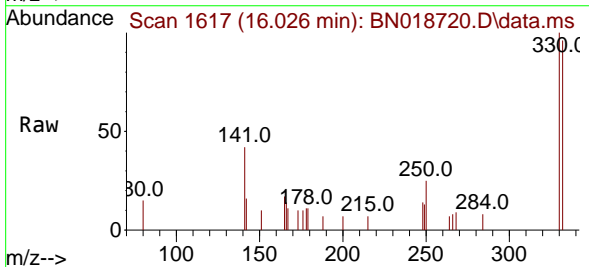
Ion	Ratio	Lower	Upper
164	100		
162	106.6	80.2	120.2
160	51.1	36.9	55.3

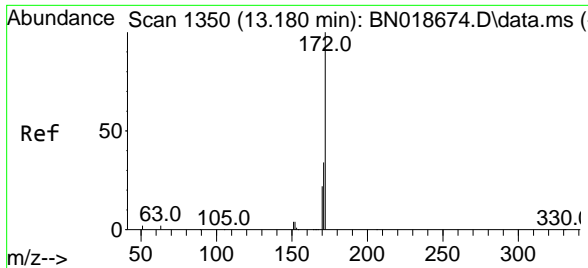


#14
 2,4,6-Tribromophenol
 Concen: 0.353 ng
 RT: 16.026 min Scan# 1617
 Delta R.T. 0.001 min
 Lab File: BN018720.D
 Acq: 24 Feb 2022 22:31

Tgt Ion:330 Resp: 1038

Ion	Ratio	Lower	Upper
330	100		
332	95.7	0.0	0.0#
141	37.6	21.3	31.9#



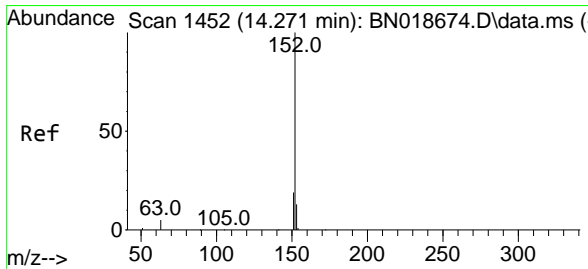
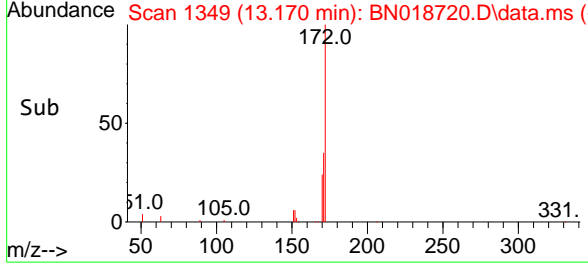
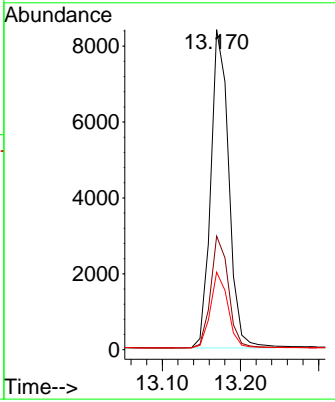
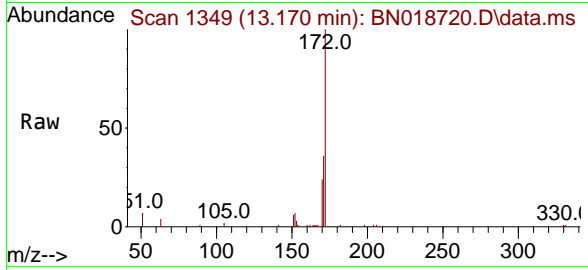


#15
 2-Fluorobiphenyl
 Concen: 0.377 ng
 RT: 13.170 min Scan# 11
 Delta R.T. -0.011 min
 Lab File: BN018720.D
 Acq: 24 Feb 2022 22:31

Instrument : BNA_N
 ClientSampleId : SSTDCCC0.4EC

Tgt Ion:172 Resp: 13449

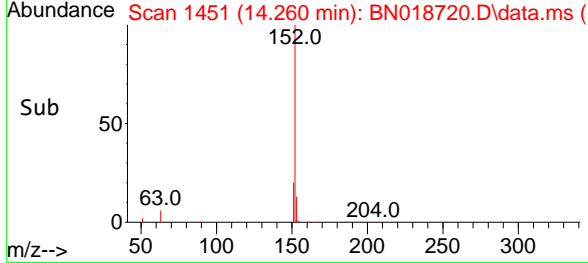
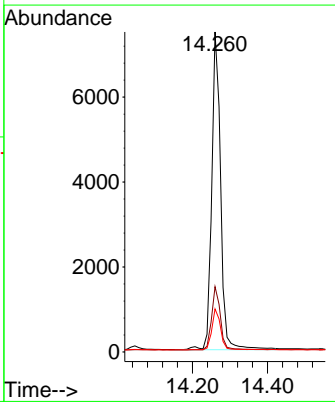
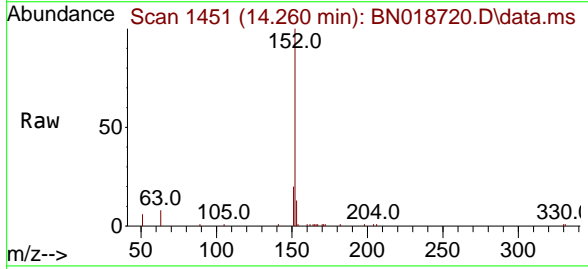
Ion	Ratio	Lower	Upper
172	100		
171	35.5	27.4	41.0
170	24.2	18.4	27.6

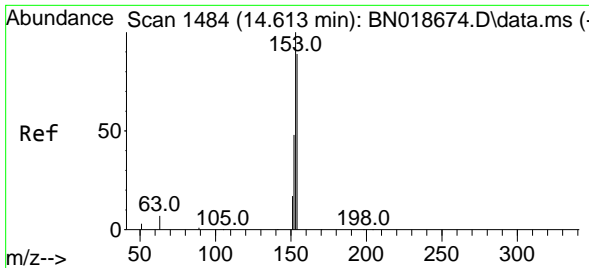


#16
 Acenaphthylene
 Concen: 0.347 ng
 RT: 14.260 min Scan# 1451
 Delta R.T. -0.011 min
 Lab File: BN018720.D
 Acq: 24 Feb 2022 22:31

Tgt Ion:152 Resp: 12378

Ion	Ratio	Lower	Upper
152	100		
151	19.7	15.8	23.6
153	12.5	10.5	15.7



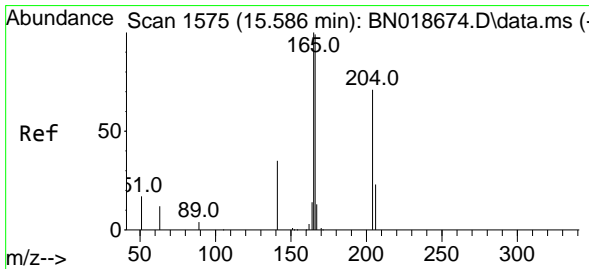
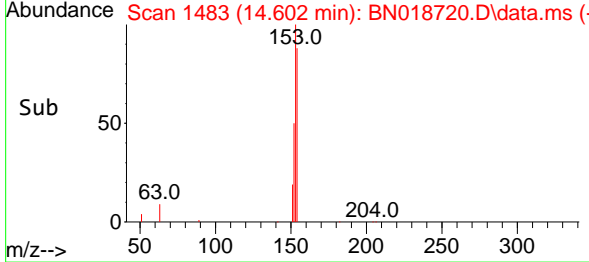
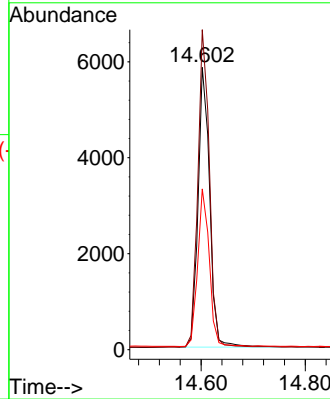
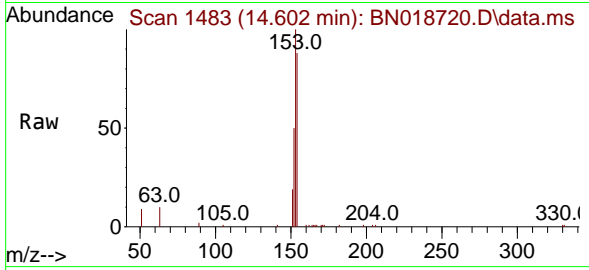


#17
 Acenaphthene
 Concen: 0.368 ng
 RT: 14.602 min Scan# 14
 Delta R.T. -0.011 min
 Lab File: BN018720.D
 Acq: 24 Feb 2022 22:31

Instrument :
 BNA_N
 ClientSampleId :
 SSTDCCC0.4EC

Tgt Ion:154 Resp: 9076

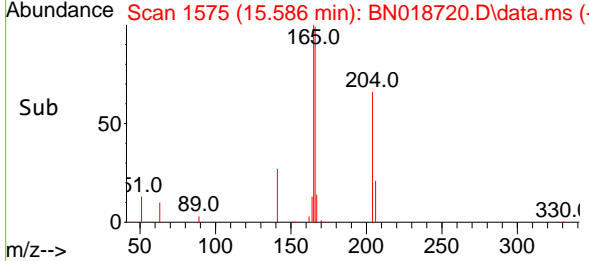
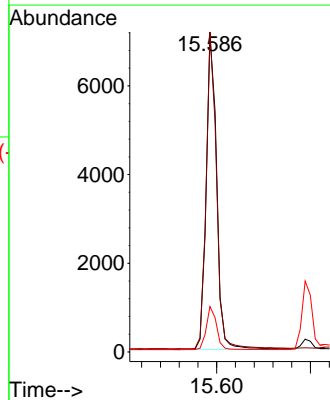
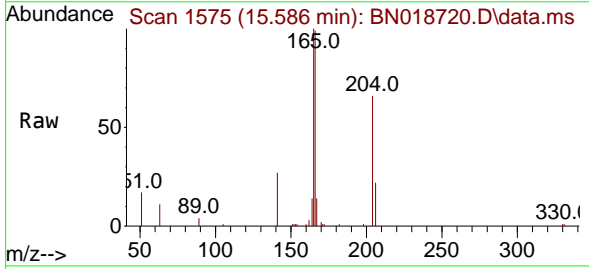
Ion	Ratio	Lower	Upper
154	100		
153	112.6	90.9	136.3
152	55.9	45.0	67.4

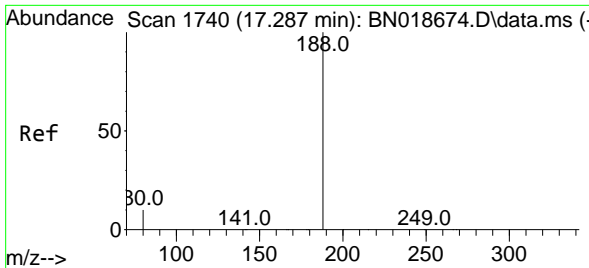


#18
 Fluorene
 Concen: 0.372 ng
 RT: 15.586 min Scan# 1575
 Delta R.T. 0.000 min
 Lab File: BN018720.D
 Acq: 24 Feb 2022 22:31

Tgt Ion:166 Resp: 11023

Ion	Ratio	Lower	Upper
166	100		
165	98.7	77.8	116.6
167	13.8	10.9	16.3



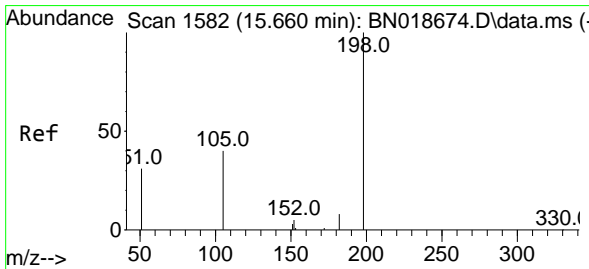
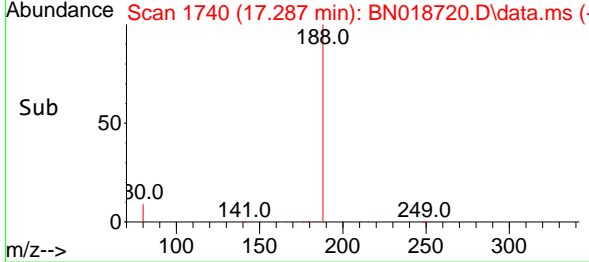
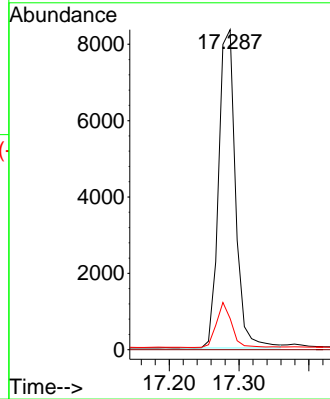
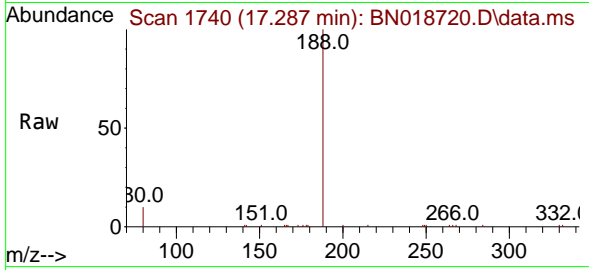


#19
 Phenanthrene-d10
 Concen: 0.400 ng
 RT: 17.287 min Scan# 11
 Delta R.T. 0.000 min
 Lab File: BN018720.D
 Acq: 24 Feb 2022 22:31

Instrument :
 BNA_N
 ClientSampleId :
 SSTDCCC0.4EC

Tgt Ion:188 Resp: 14026

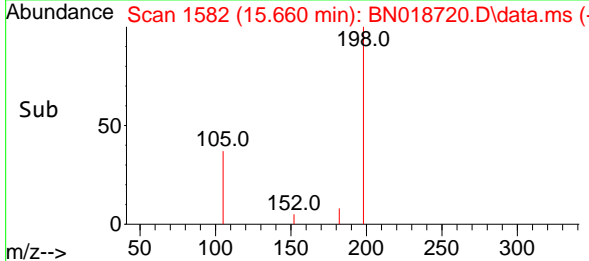
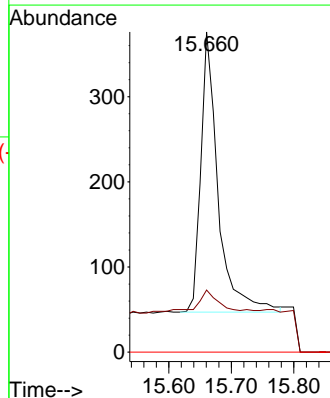
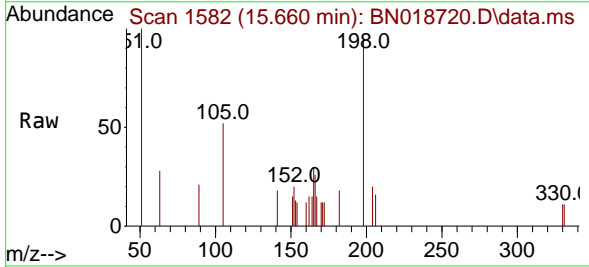
Ion	Ratio	Lower	Upper
188	100		
94	0.0	0.0	0.0
80	9.7	7.0	10.4

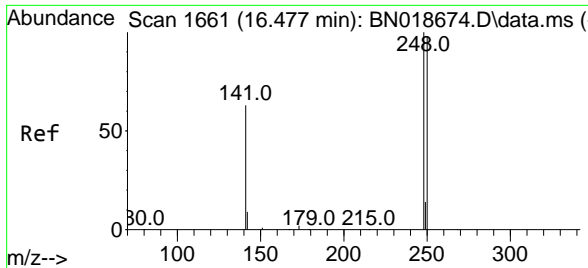


#20
 4,6-Dinitro-2-methylphenol
 Concen: 0.355 ng
 RT: 15.660 min Scan# 1582
 Delta R.T. 0.000 min
 Lab File: BN018720.D
 Acq: 24 Feb 2022 22:31

Tgt Ion:198 Resp: 634

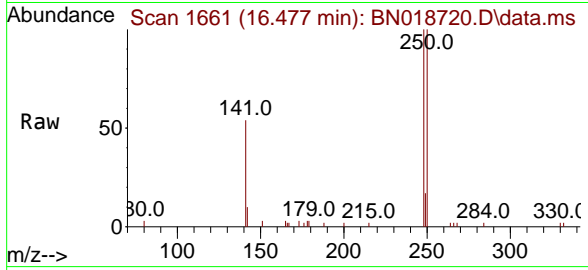
Ion	Ratio	Lower	Upper
198	100		
182	19.4	15.5	23.3
77	0.0	0.0	0.0





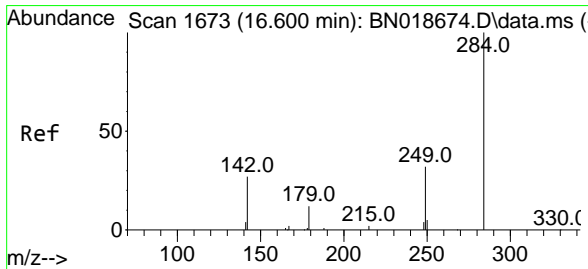
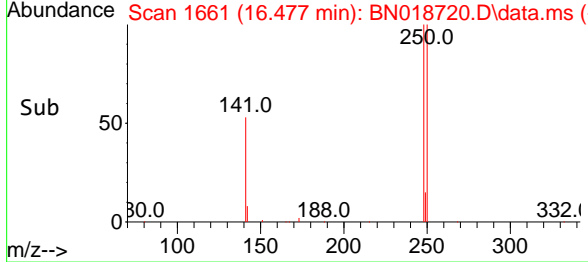
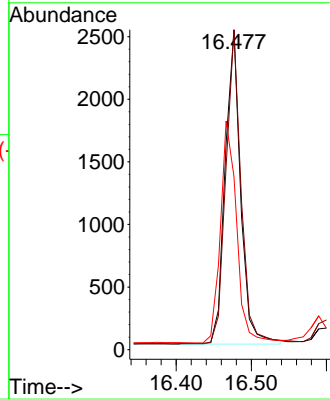
#21
 4-Bromophenyl-phenylether
 Concen: 0.358 ng
 RT: 16.477 min Scan# 1661
 Delta R.T. 0.000 min
 Lab File: BN018720.D
 Acq: 24 Feb 2022 22:31

Instrument :
 BNA_N
 ClientSampleId :
 SSTDCCC0.4EC

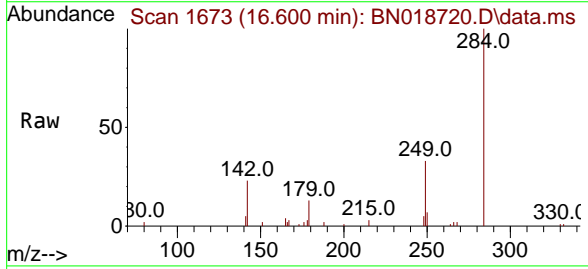


Tgt Ion:248 Resp: 3569

Ion	Ratio	Lower	Upper
248	100		
250	100.1	74.4	111.6
141	54.2	43.7	65.5

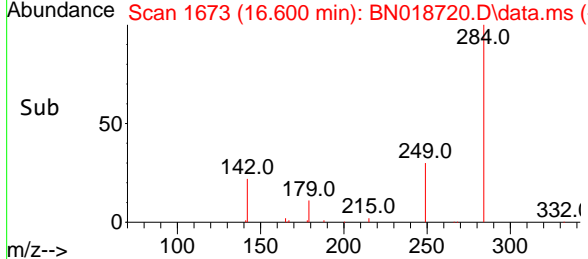
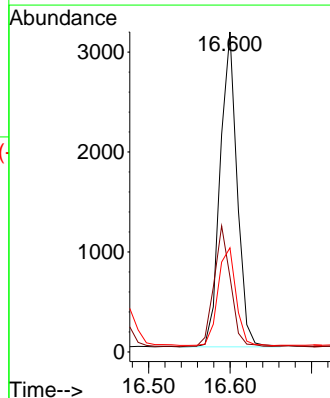


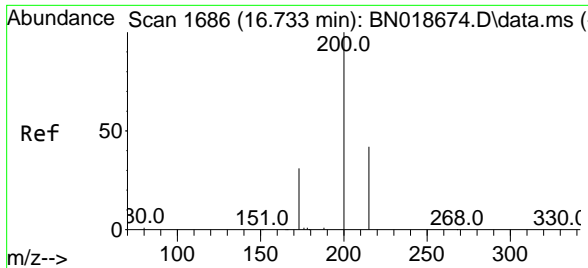
#22
 Hexachlorobenzene
 Concen: 0.363 ng
 RT: 16.600 min Scan# 1673
 Delta R.T. 0.000 min
 Lab File: BN018720.D
 Acq: 24 Feb 2022 22:31



Tgt Ion:284 Resp: 4531

Ion	Ratio	Lower	Upper
284	100		
142	37.9	21.6	32.4#
249	33.1	23.5	35.3

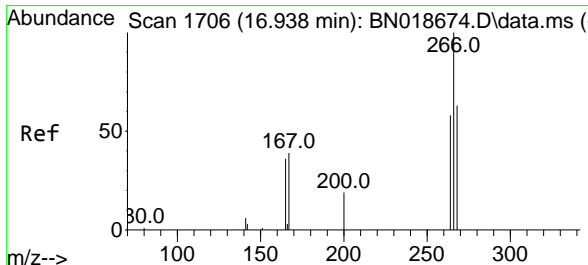
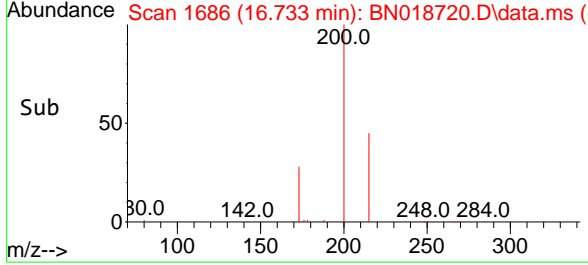
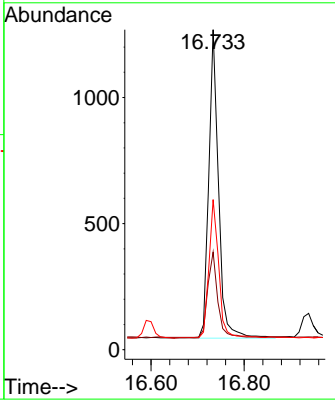
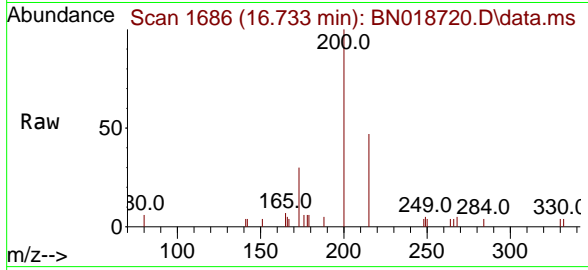




#23
 Atrazine
 Concen: 0.322 ng
 RT: 16.733 min Scan# 11
 Delta R.T. 0.000 min
 Lab File: BN018720.D
 Acq: 24 Feb 2022 22:31

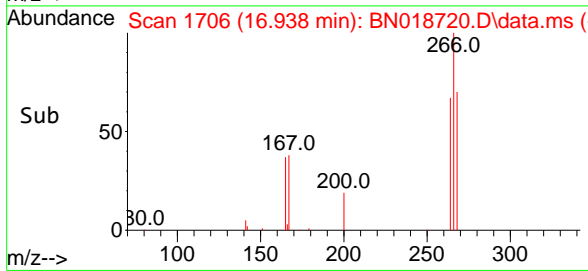
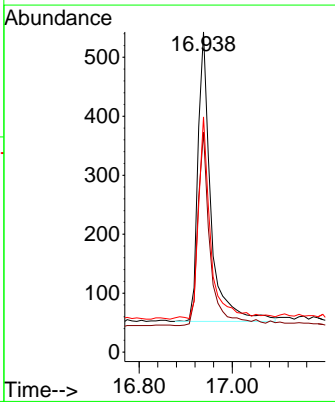
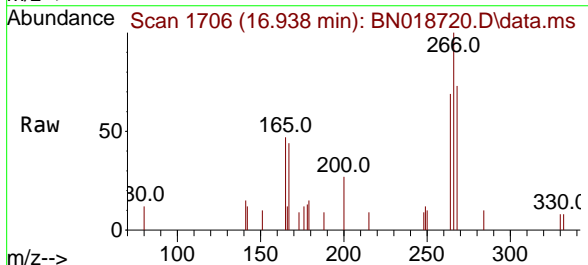
Instrument : BNA_N
 ClientSampleId : SSTDCCC0.4EC

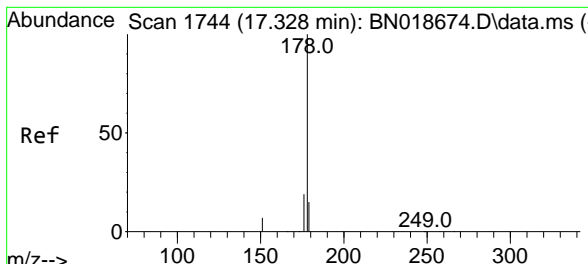
Tgt Ion	Resp	Lower	Upper
200	1772		
173	30.5	20.3	30.5#
215	46.9	40.4	60.6



#24
 Pentachlorophenol
 Concen: 0.393 ng
 RT: 16.938 min Scan# 1706
 Delta R.T. 0.000 min
 Lab File: BN018720.D
 Acq: 24 Feb 2022 22:31

Tgt Ion	Resp	Lower	Upper
266	943		
264	63.7	49.5	74.3
268	66.3	50.6	76.0

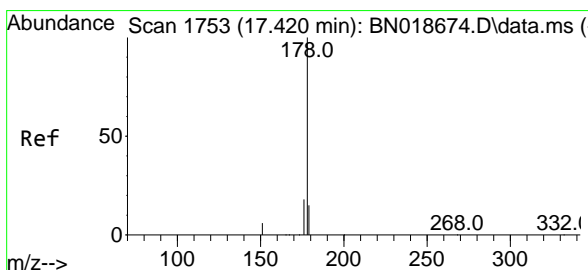
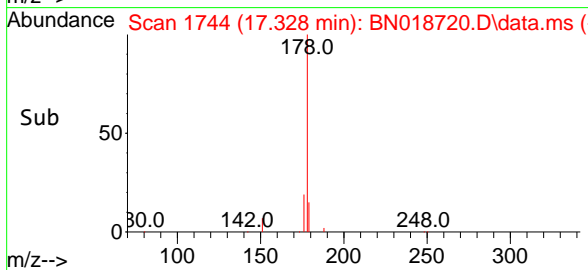
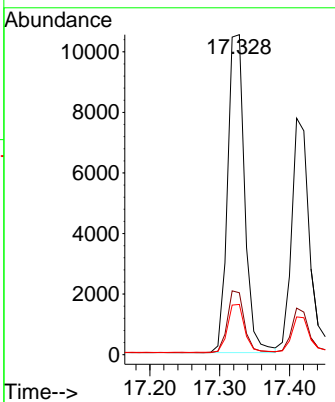
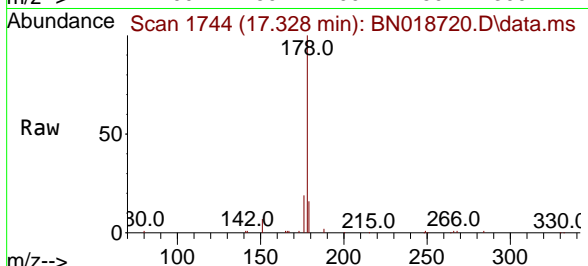




#25
 Phenanthrene
 Concen: 0.379 ng
 RT: 17.328 min Scan# 1744
 Delta R.T. 0.000 min
 Lab File: BN018720.D
 Acq: 24 Feb 2022 22:31

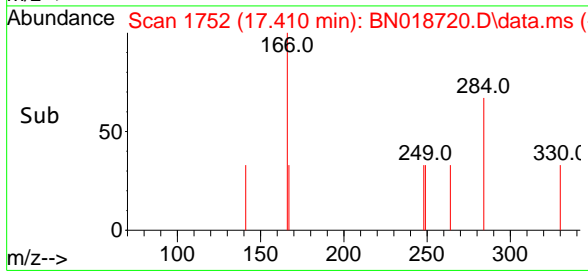
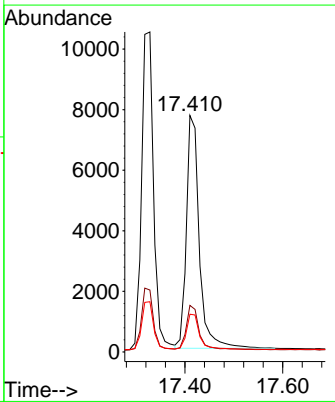
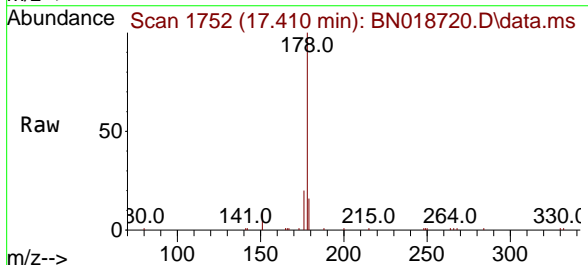
Instrument : BNA_N
 ClientSampleId : SSTDCCC0.4EC

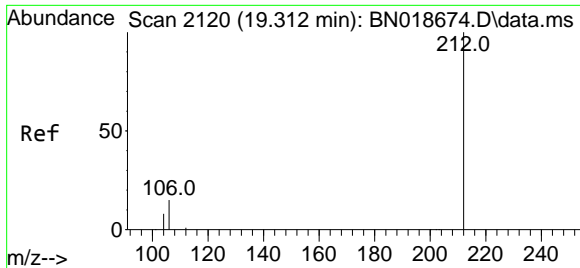
Tgt Ion	Resp	Lower	Upper
178	17800		
176	19.3	15.3	22.9
179	15.2	12.3	18.5



#26
 Anthracene
 Concen: 0.353 ng
 RT: 17.410 min Scan# 1752
 Delta R.T. -0.010 min
 Lab File: BN018720.D
 Acq: 24 Feb 2022 22:31

Tgt Ion	Resp	Lower	Upper
178	14040		
176	18.6	14.8	22.2
179	15.5	12.2	18.4



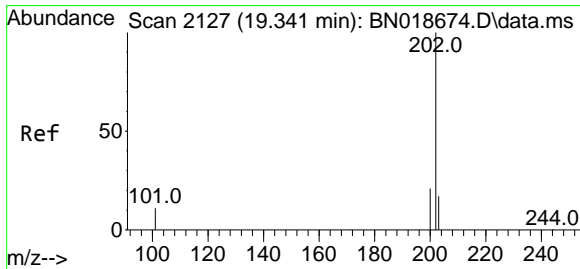
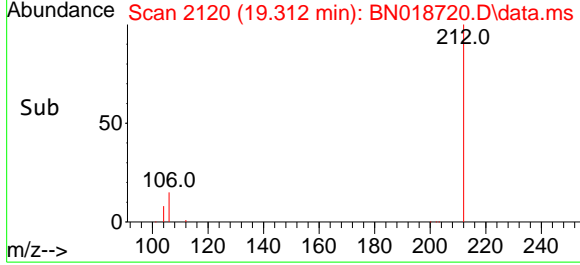
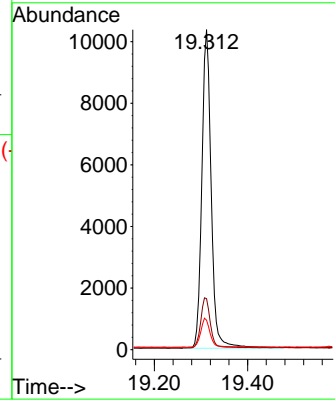
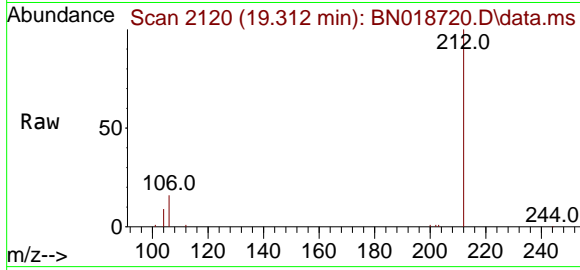


#27
 Fluoranthene-d10
 Concen: 0.378 ng
 RT: 19.312 min Scan# 2120
 Delta R.T. 0.000 min
 Lab File: BN018720.D
 Acq: 24 Feb 2022 22:31

Instrument : BNA_N
 ClientSampleId : SSTDCCC0.4EC

Tgt Ion:212 Resp: 14388

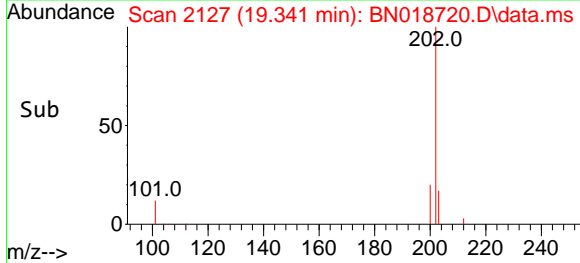
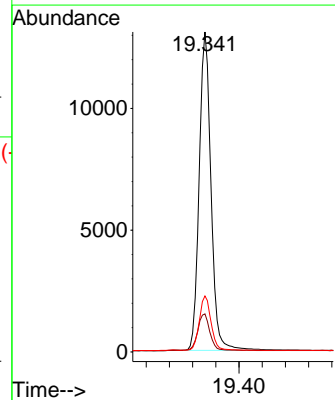
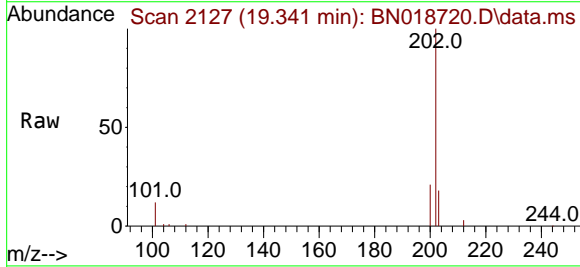
Ion	Ratio	Lower	Upper
212	100		
106	16.2	8.4	12.6#
104	9.1	4.5	6.7#

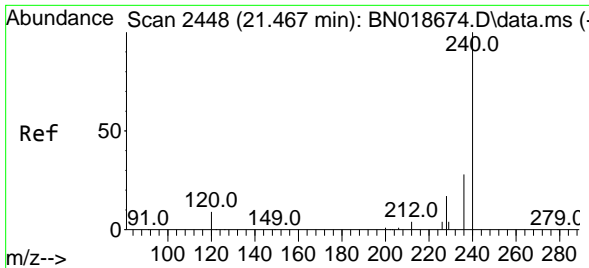


#28
 Fluoranthene
 Concen: 0.377 ng
 RT: 19.341 min Scan# 2127
 Delta R.T. 0.000 min
 Lab File: BN018720.D
 Acq: 24 Feb 2022 22:31

Tgt Ion:202 Resp: 18474

Ion	Ratio	Lower	Upper
202	100		
101	12.0	7.2	10.8#
203	16.8	13.7	20.5



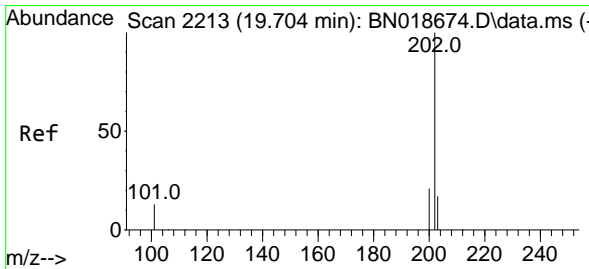
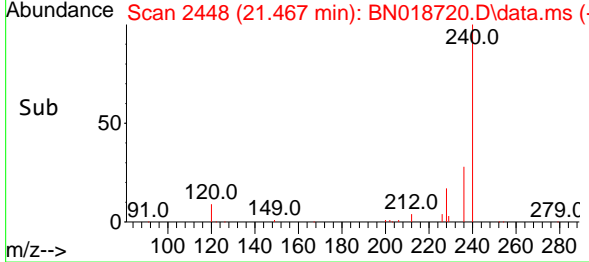
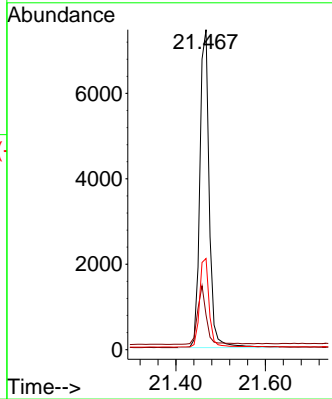
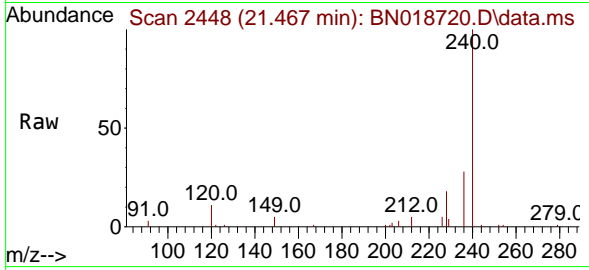


#29
 Chrysene-d12
 Concen: 0.400 ng
 RT: 21.467 min Scan# 2448
 Delta R.T. 0.000 min
 Lab File: BN018720.D
 Acq: 24 Feb 2022 22:31

Instrument : BNA_N
 ClientSampleId : BN018720.D
 SSTDCCC0.4EC

Tgt Ion:240 Resp: 10895

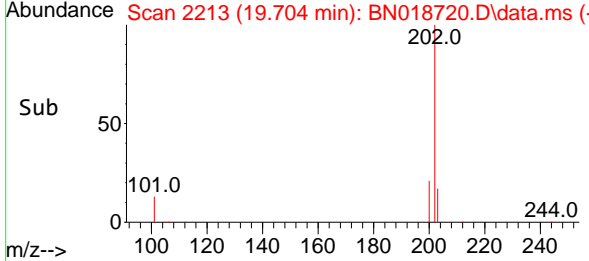
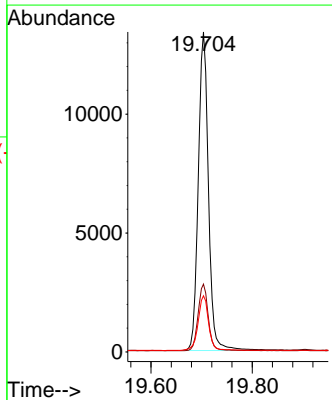
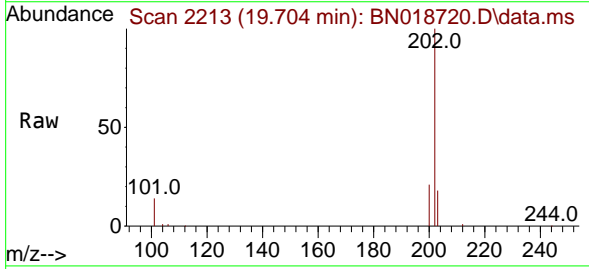
Ion	Ratio	Lower	Upper
240	100		
120	10.8	6.0	9.0#
236	28.5	21.4	32.2

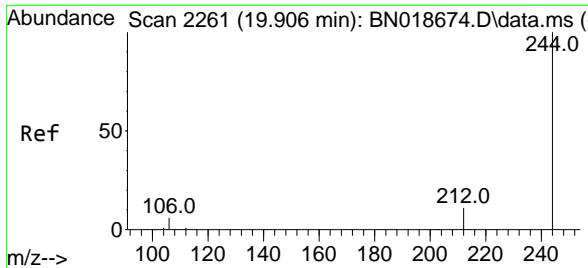


#30
 Pyrene
 Concen: 0.384 ng
 RT: 19.704 min Scan# 2213
 Delta R.T. 0.000 min
 Lab File: BN018720.D
 Acq: 24 Feb 2022 22:31

Tgt Ion:202 Resp: 18683

Ion	Ratio	Lower	Upper
202	100		
200	20.9	16.6	25.0
203	17.9	14.1	21.1

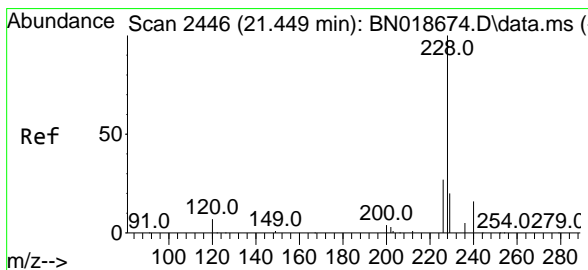
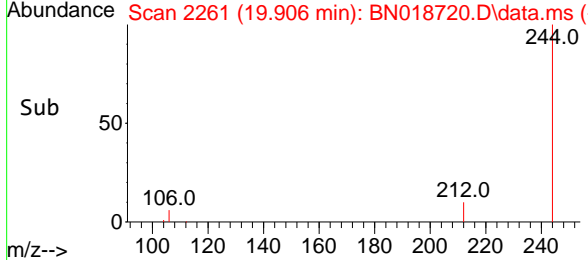
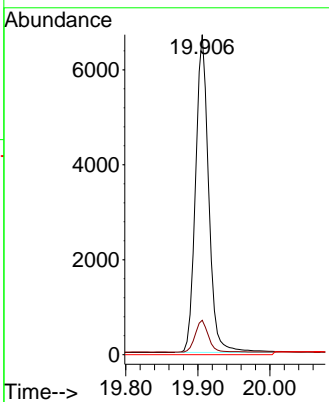
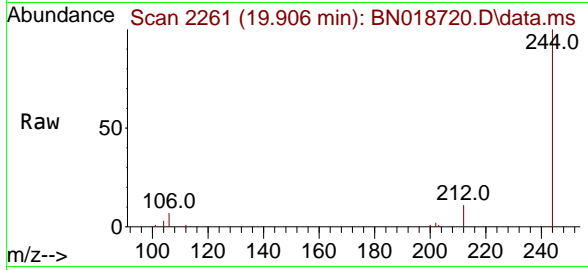




#31
 Terphenyl-d14
 Concen: 0.358 ng
 RT: 19.906 min Scan# 21
 Delta R.T. 0.000 min
 Lab File: BN018720.D
 Acq: 24 Feb 2022 22:31

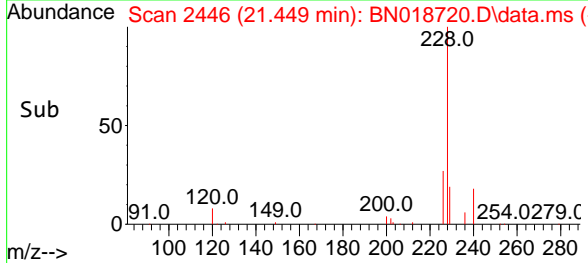
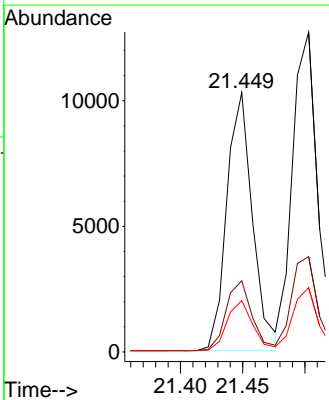
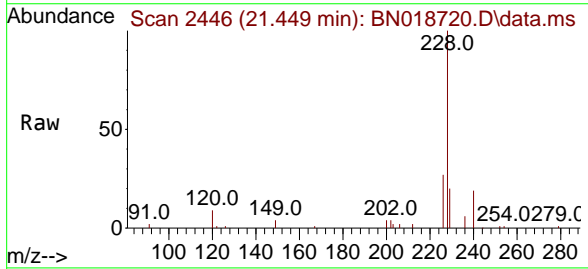
Instrument :
 BNA_N
 ClientSampleId :
 SSTDCCC0.4EC

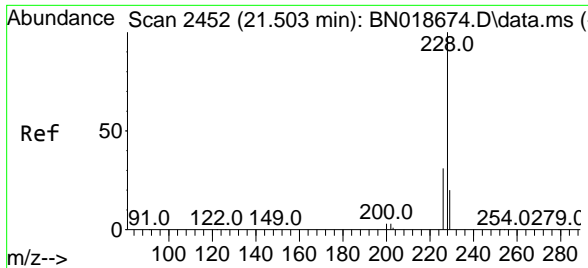
Tgt Ion	Resp	Lower	Upper
244	100		
212	10.8	6.2	9.2#
122	0.0	7.9	11.9#



#32
 Benzo(a)anthracene
 Concen: 0.359 ng
 RT: 21.449 min Scan# 2446
 Delta R.T. 0.000 min
 Lab File: BN018720.D
 Acq: 24 Feb 2022 22:31

Tgt Ion	Resp	Lower	Upper
228	100		
226	27.4	21.3	31.9
229	19.8	15.9	23.9

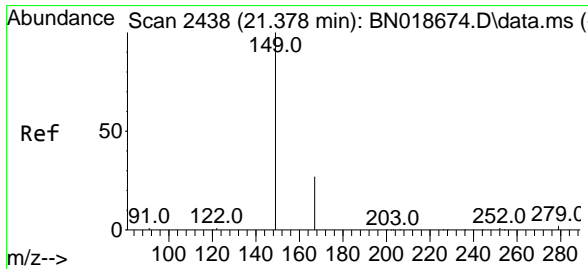
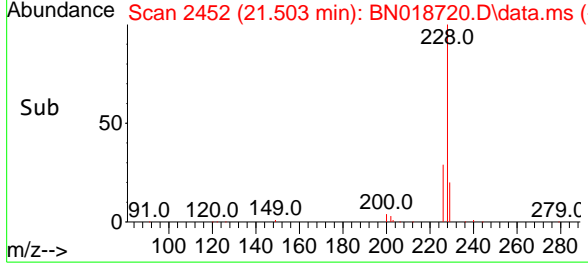
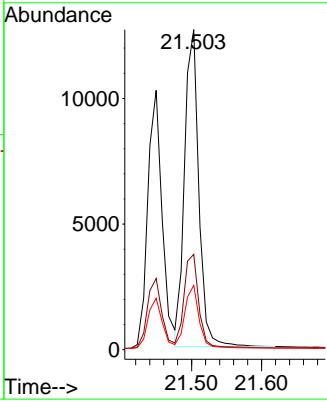
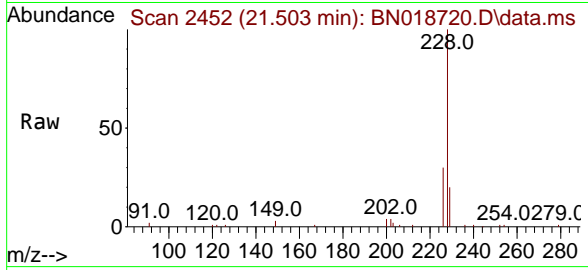




#33
 Chrysene
 Concen: 0.387 ng
 RT: 21.503 min Scan# 2452
 Delta R.T. 0.000 min
 Lab File: BN018720.D
 Acq: 24 Feb 2022 22:31

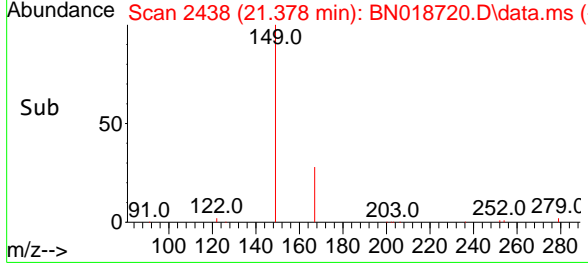
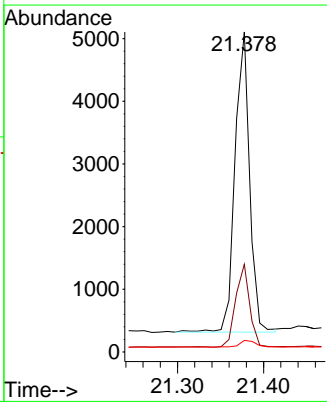
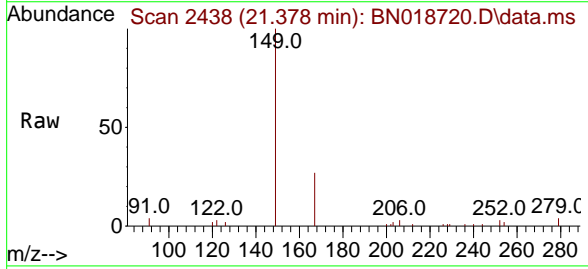
Instrument : BNA_N
 ClientSampleId : SSTDCCC0.4EC

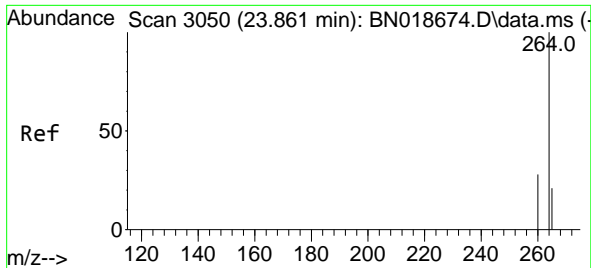
Tgt Ion	Resp	Lower	Upper
228	17826		
226	29.8	24.2	36.4
229	20.1	15.5	23.3



#34
 Bis(2-ethylhexyl)phthalate
 Concen: 0.336 ng
 RT: 21.378 min Scan# 2438
 Delta R.T. 0.000 min
 Lab File: BN018720.D
 Acq: 24 Feb 2022 22:31

Tgt Ion	Resp	Lower	Upper
149	5648		
167	26.5	23.7	35.5
279	2.5	3.6	5.4



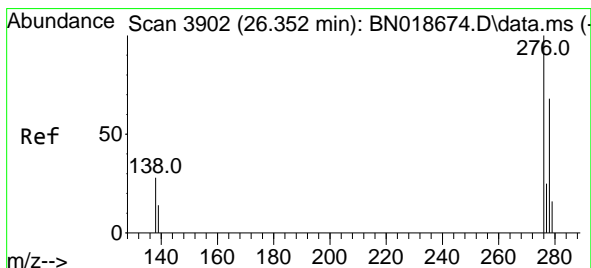
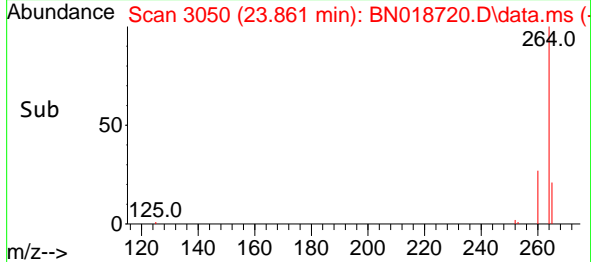
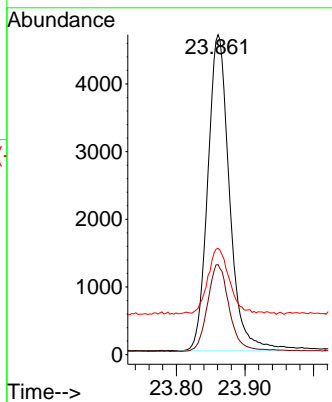
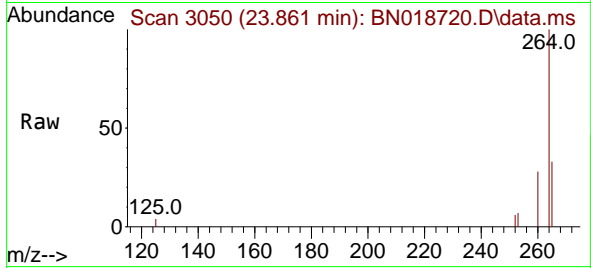


#35
 Perylene-d12
 Concen: 0.400 ng
 RT: 23.861 min Scan# 3050
 Delta R.T. 0.000 min
 Lab File: BN018720.D
 Acq: 24 Feb 2022 22:31

Instrument :
 BNA_N
 ClientSampleId :
 SSTDCCC0.4EC

Tgt Ion:264 Resp: 10237

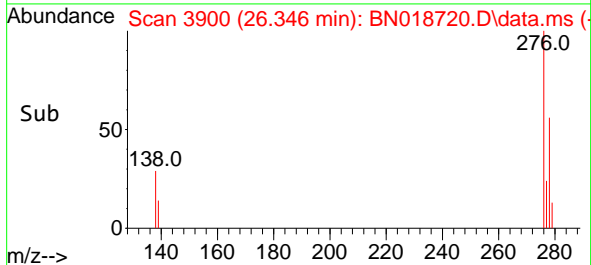
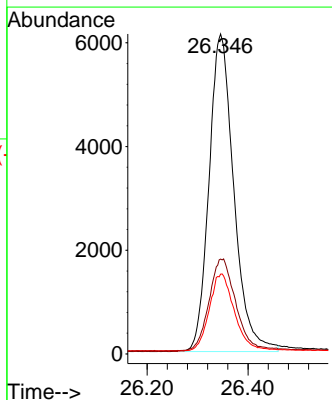
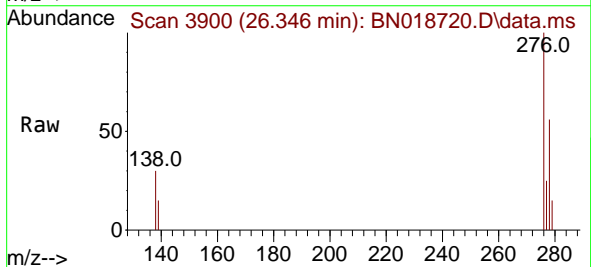
Ion	Ratio	Lower	Upper
264	100		
260	28.2	20.2	30.4
265	33.2	18.2	27.2

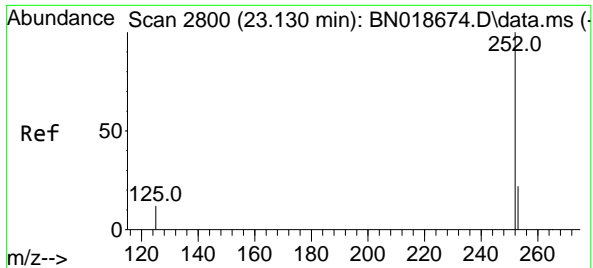


#36
 Indeno(1,2,3-cd)pyrene
 Concen: 0.387 ng
 RT: 26.346 min Scan# 3900
 Delta R.T. -0.006 min
 Lab File: BN018720.D
 Acq: 24 Feb 2022 22:31

Tgt Ion:276 Resp: 20906

Ion	Ratio	Lower	Upper
276	100		
138	31.0	14.9	22.3
277	24.7	19.9	29.9

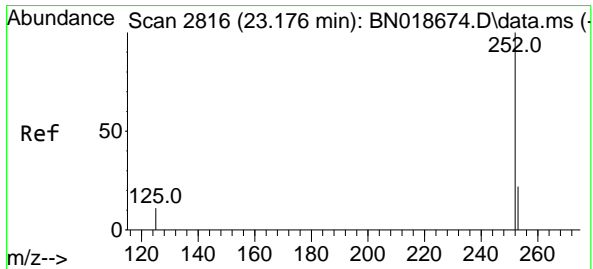
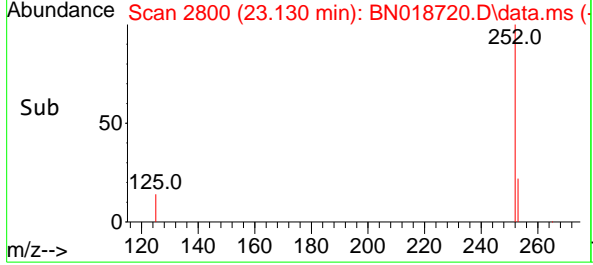
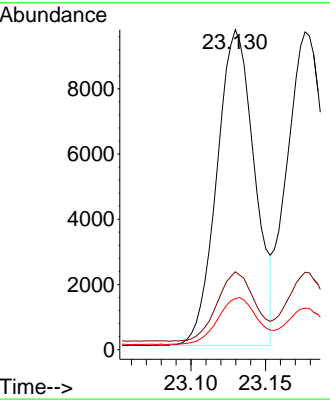
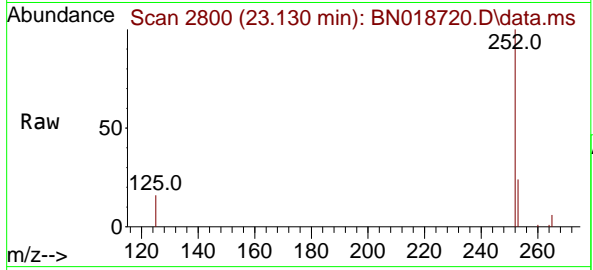




#37
 Benzo(b)fluoranthene
 Concen: 0.367 ng
 RT: 23.130 min Scan# 21
 Delta R.T. 0.000 min
 Lab File: BN018720.D
 Acq: 24 Feb 2022 22:31

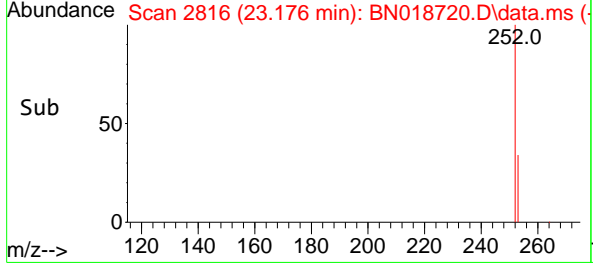
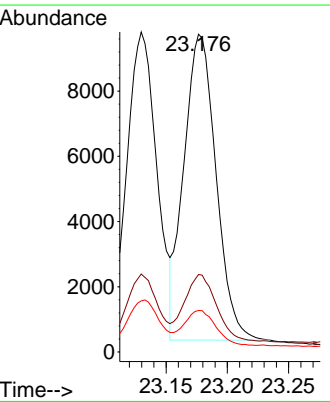
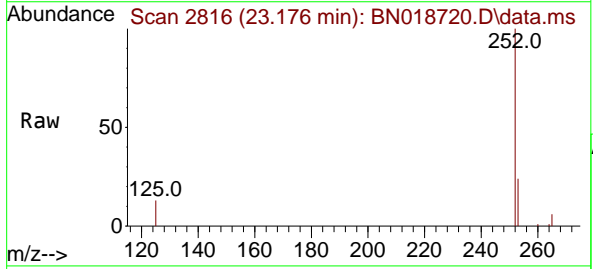
Instrument : BNA_N
 ClientSampleId : SSTDCCC0.4EC

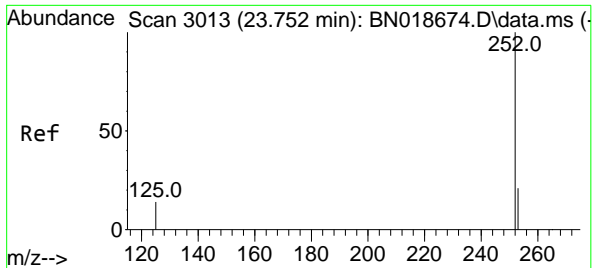
Tgt Ion	Resp	Lower	Upper
252	17048		
253	24.4	17.8	26.6
125	16.0	6.0	9.0



#38
 Benzo(k)fluoranthene
 Concen: 0.372 ng
 RT: 23.176 min Scan# 2816
 Delta R.T. 0.000 min
 Lab File: BN018720.D
 Acq: 24 Feb 2022 22:31

Tgt Ion	Resp	Lower	Upper
252	17131		
253	24.4	17.7	26.5
125	13.0	6.2	9.2



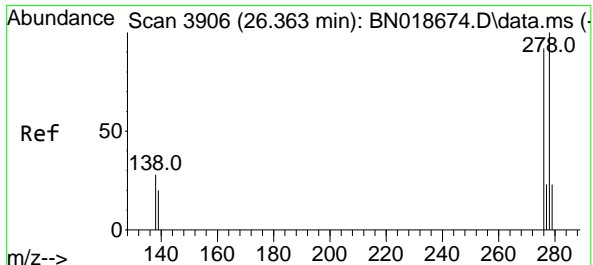
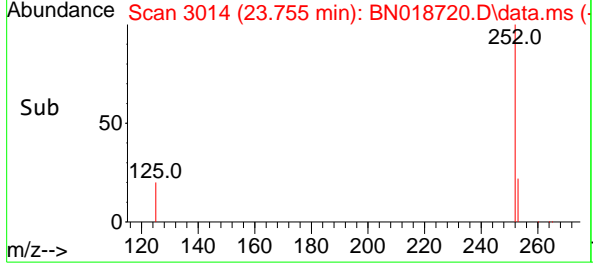
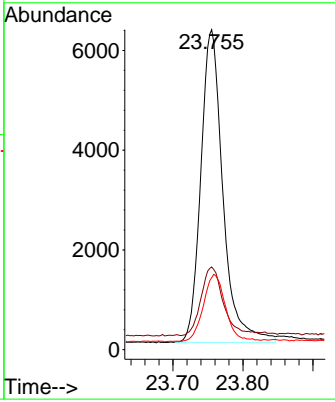
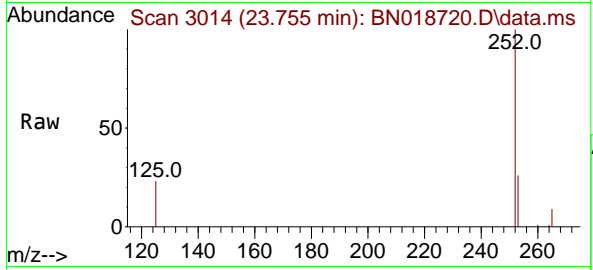


#39
 Benzo(a)pyrene
 Concen: 0.371 ng
 RT: 23.755 min Scan# 3013
 Delta R.T. 0.003 min
 Lab File: BN018720.D
 Acq: 24 Feb 2022 22:31

Instrument : BNA_N
 ClientSampleId : SSTDCCC0.4EC

Tgt Ion:252 Resp: 13741

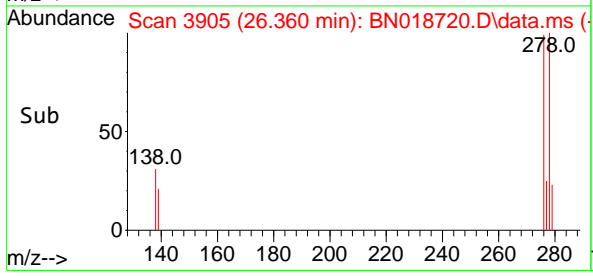
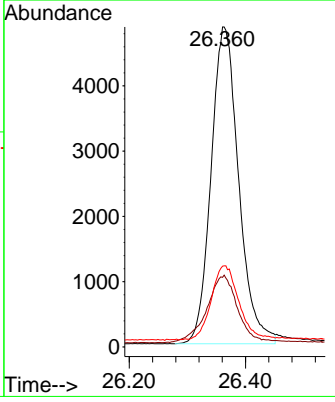
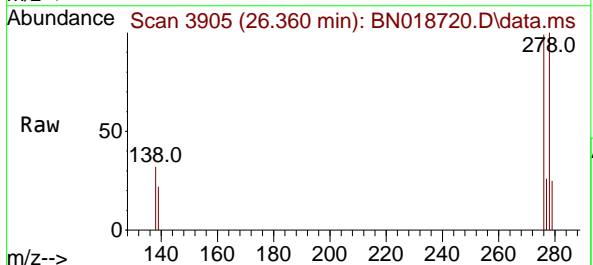
Ion	Ratio	Lower	Upper
252	100		
253	25.8	17.8	26.6
125	22.5	7.0	10.4

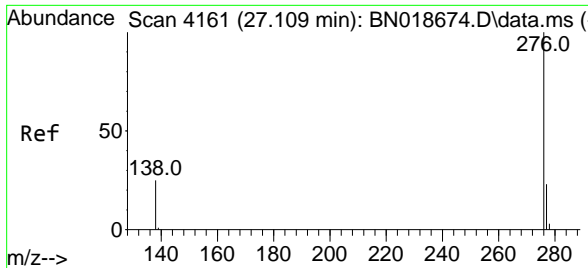


#40
 Dibenzo(a,h)anthracene
 Concen: 0.380 ng
 RT: 26.360 min Scan# 3905
 Delta R.T. -0.003 min
 Lab File: BN018720.D
 Acq: 24 Feb 2022 22:31

Tgt Ion:278 Resp: 16034

Ion	Ratio	Lower	Upper
278	100		
139	21.8	10.8	16.2
279	25.2	19.0	28.4





#41
 Benzo(g,h,i)perylene
 Concen: 0.371 ng
 RT: 27.109 min Scan# 41
 Delta R.T. 0.000 min
 Lab File: BN018720.D
 Acq: 24 Feb 2022 22:31

Instrument :
 BNA_N
 ClientSampleId :
 SSTDCCC0.4EC

Tgt Ion:276 Resp: 17151

Ion	Ratio	Lower	Upper
276	100		
277	24.4	19.0	28.6
138	27.4	12.6	19.0#

