

Data Path : Z:\svoasrv\HPCHEM1\BNA_N\Data\BN033122\
 Data File : BN019306.D
 Acq On : 02 Apr 2022 03:30
 Operator : CG/JU
 Sample : N2220-18
 Misc :
 ALS Vial : 26 Sample Multiplier: 1

Instrument :
 BNA_N
 ClientSampleId :
 FB0331

Quant Time: Apr 02 04:04:22 2022
 Quant Method : Z:\SVOASRV\HPCHEM1\BNA_N\METHODS\8270-SIM-BN033122.M
 Quant Title : ASP BNA STANDARDS FOR 5 POINT CALIBRATION
 QLast Update : Thu Mar 31 12:41:03 2022
 Response via : Initial Calibration

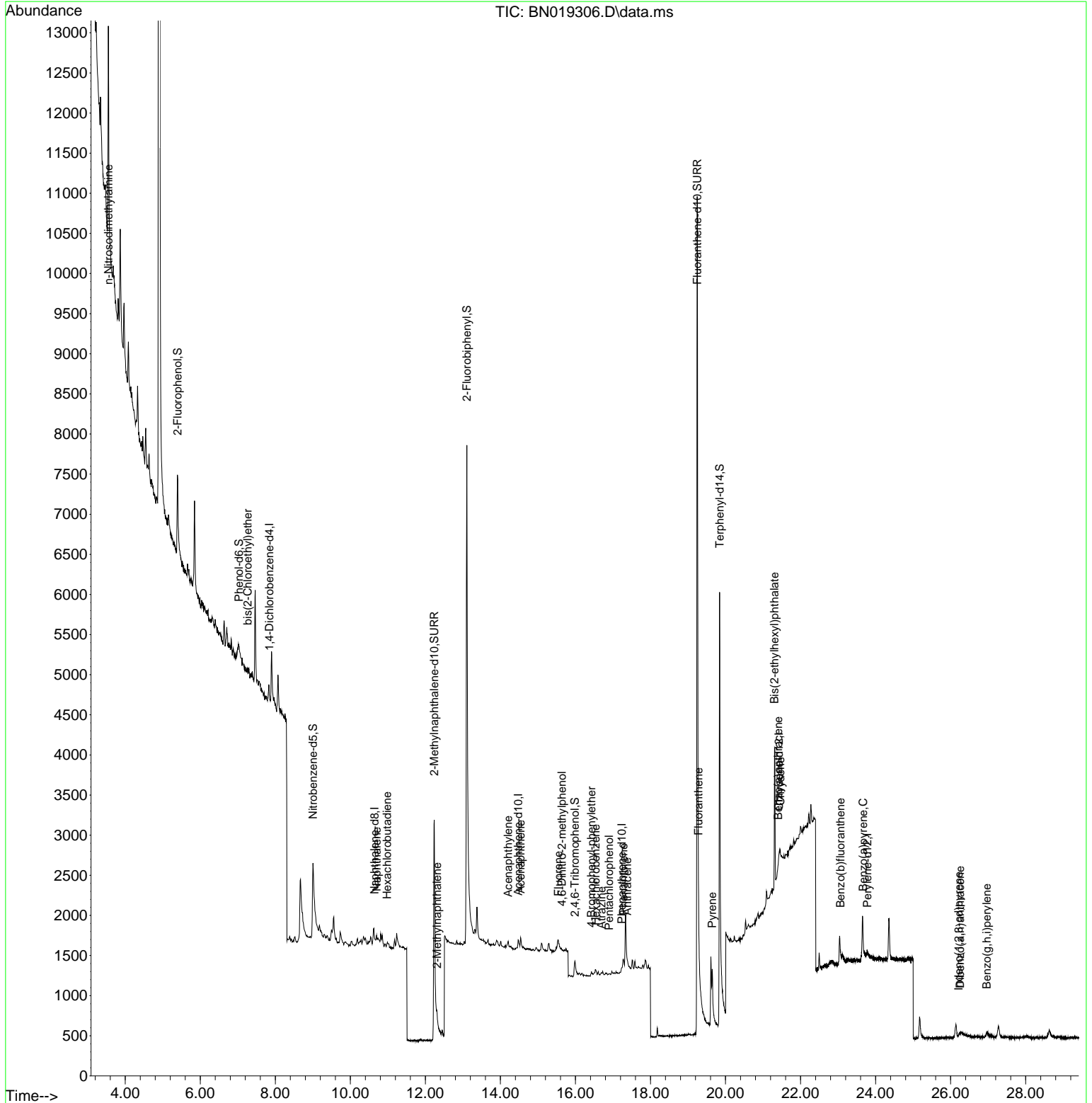
Compound	R.T.	QIon	Response	Conc	Units	Dev(Min)	
Internal Standards							
1) 1,4-Dichlorobenzene-d4	7.840	152	55	0.400	ng	#	0.00
7) Naphthalene-d8	10.648	136	163	0.400	ng	#	0.01
13) Acenaphthene-d10	14.474	164	128	0.400	ng	#	0.00
19) Phenanthrene-d10	17.236	188	183	0.400	ng	#	0.02
29) Chrysene-d12	21.422	240	279	0.400	ng	#	0.02
35) Perylene-d12	23.779	264	99	0.400	ng	#	0.01
System Monitoring Compounds							
4) 2-Fluorophenol	5.399	112	973	8.091	ng		0.00
5) Phenol-d6	7.031	99	361	2.828	ng		0.04
8) Nitrobenzene-d5	9.003	82	1879	16.052	ng		0.01
11) 2-Methylnaphthalene-d10	12.234	152	6120	23.646	ng		0.00
14) 2,4,6-Tribromophenol	15.984	330	222	3.706	ng		0.02
15) 2-Fluorobiphenyl	13.105	172	8057	15.683	ng		0.00
27) Fluoranthene-d10	19.248	212	17849	32.472	ng		0.00
31) Terphenyl-d14	19.843	244	10068	16.222	ng		0.00
Target Compounds							
3) n-Nitrosodimethylamine	3.550	42	474	6.211	ng	#	1
6) bis(2-Chloroethyl)ether	7.262	93	68	0.447	ng	#	69
9) Naphthalene	10.701	128	301	0.637	ng	#	19
10) Hexachlorobutadiene	10.979	225	40	0.363	ng	#	86
12) 2-Methylnaphthalene	12.310	142	90	0.295	ng	#	64
16) Acenaphthylene	14.206	152	137	0.232	ng	#	79
17) Acenaphthene	14.538	154	113	0.269	ng		94
18) Fluorene	15.543	166	155	0.295	ng		84
20) 4,6-Dinitro-2-methylph...	15.639	198	3	0.186	ng	#	1
21) 4-Bromophenyl-phenylether	16.425	248	45	0.383	ng	#	66
22) Hexachlorobenzene	16.538	284	65	0.425	ng	#	85
23) Atrazine	16.692	200	2	0.025	ng	#	1
24) Pentachlorophenol	16.897	266	2	0.045	ng	#	1
25) Phenanthrene	17.277	178	351	0.609	ng	#	87
26) Anthracene	17.379	178	162	0.340	ng	#	65
28) Fluoranthene	19.278	202	349	0.508	ng	#	95
30) Pyrene	19.640	202	341	0.247	ng		95
32) Benzo(a)anthracene	21.404	228	150	0.172	ng	#	21
33) Chrysene	21.458	228	228	0.204	ng	#	36
34) Bis(2-ethylhexyl)phtha...	21.306	149	2042	3.495	ng	#	96
36) Indeno(1,2,3-cd)pyrene	26.214	276	17	0.042	ng	#	65
37) Benzo(b)fluoranthene	23.062	252	148	0.402	ng	#	1
39) Benzo(a)pyrene	23.668	252	46	0.138	ng	#	1
40) Dibenzo(a,h)anthracene	26.252	278	11	0.037	ng	#	1
41) Benzo(g,h,i)perylene	26.962	276	77	0.187	ng	#	1

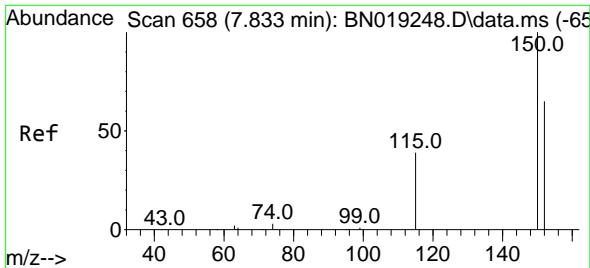
(#) = qualifier out of range (m) = manual integration (+) = signals summed

Data Path : Z:\svoasrv\HPCHEM1\BNA_N\Data\BN033122\
 Data File : BN019306.D
 Acq On : 02 Apr 2022 03:30
 Operator : CG/JU
 Sample : N2220-18
 Misc :
 ALS Vial : 26 Sample Multiplier: 1

Instrument :
 BNA_N
 ClientSampleId :
 FB0331

Quant Time: Apr 02 04:04:22 2022
 Quant Method : Z:\SVOASRV\HPCHEM1\BNA_N\METHODS\8270-SIM-BN033122.M
 Quant Title : ASP BNA STANDARDS FOR 5 POINT CALIBRATION
 QLast Update : Thu Mar 31 12:41:03 2022
 Response via : Initial Calibration

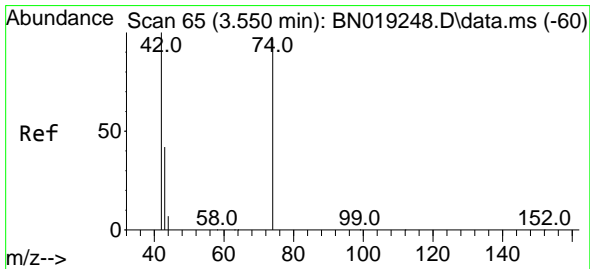
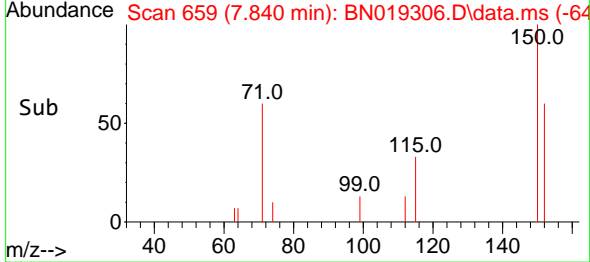
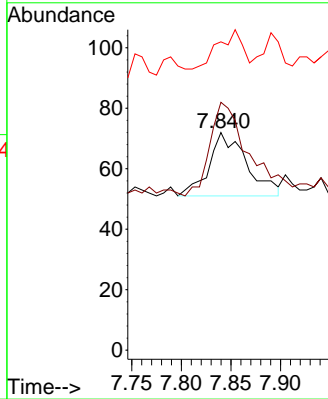
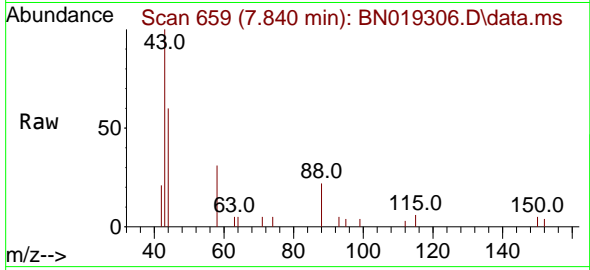




#1
 1,4-Dichlorobenzene-d4
 Concen: 0.400 ng
 RT: 7.840 min Scan# 61
 Delta R.T. 0.007 min
 Lab File: BN019306.D
 Acq: 02 Apr 2022 03:30

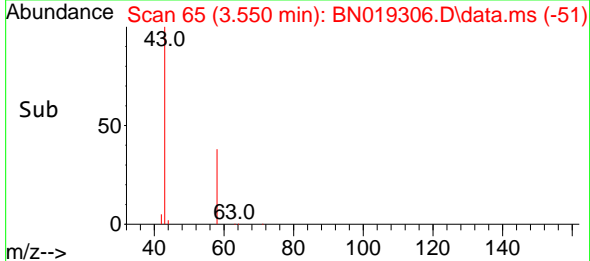
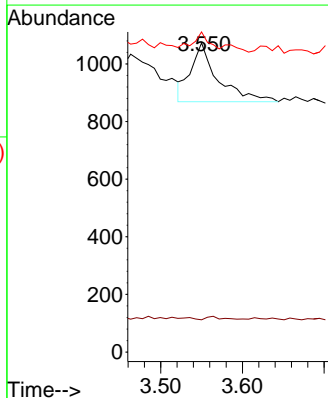
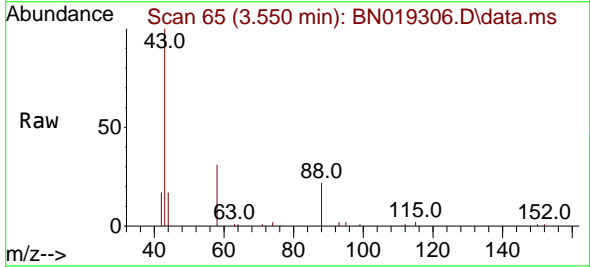
Instrument :
 BNA_N
 ClientSampleId :
 FB0331

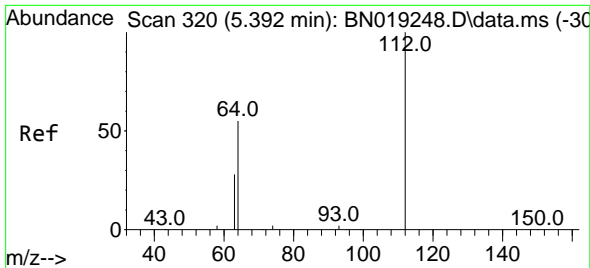
Tgt Ion: 152 Resp: 55
 Ion Ratio Lower Upper
 152 100
 150 113.9 123.9 185.9#
 115 141.7 48.2 72.4#



#3
 n-Nitrosodimethylamine
 Concen: 6.211 ng
 RT: 3.550 min Scan# 65
 Delta R.T. -0.000 min
 Lab File: BN019306.D
 Acq: 02 Apr 2022 03:30

Tgt Ion: 42 Resp: 474
 Ion Ratio Lower Upper
 42 100
 74 3.2 96.9 145.3#
 44 15.6 7.3 10.9#



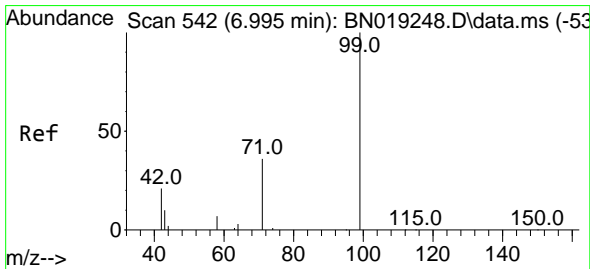
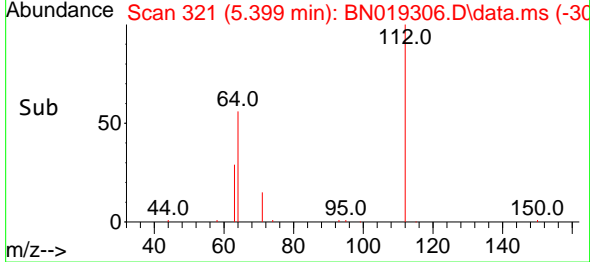
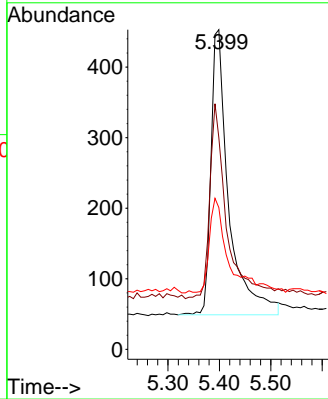
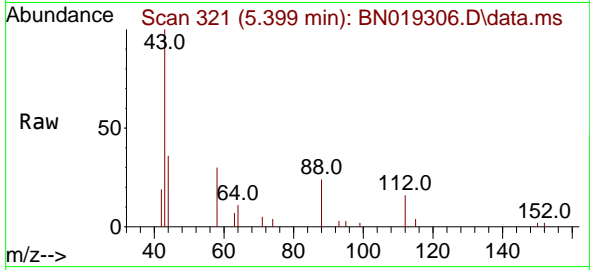


#4
 2-Fluorophenol
 Concen: 8.091 ng
 RT: 5.399 min Scan# 31
 Delta R.T. 0.007 min
 Lab File: BN019306.D
 Acq: 02 Apr 2022 03:30

Instrument :
 BNA_N
 ClientSampleId :
 FB0331

Tgt Ion: 112 Resp: 973

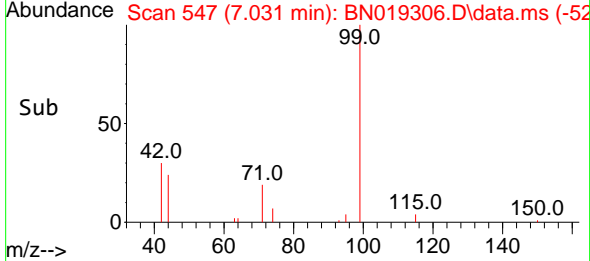
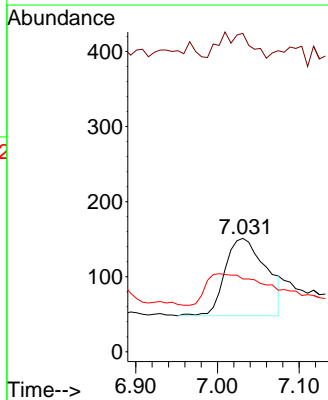
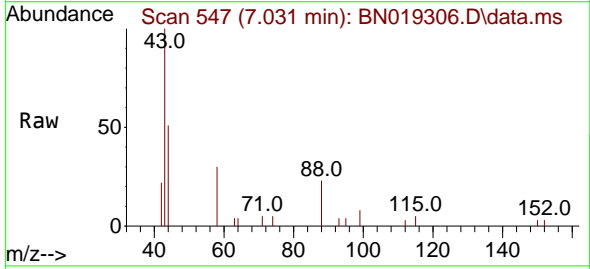
Ion	Ratio	Lower	Upper
112	100		
64	65.1	47.8	71.8
63	34.5	25.7	38.5

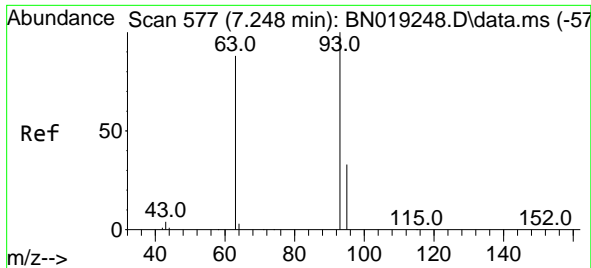


#5
 Phenol-d6
 Concen: 2.828 ng
 RT: 7.031 min Scan# 547
 Delta R.T. 0.036 min
 Lab File: BN019306.D
 Acq: 02 Apr 2022 03:30

Tgt Ion: 99 Resp: 361

Ion	Ratio	Lower	Upper
99	100		
42	0.0	16.2	24.4#
71	0.0	27.7	41.5#



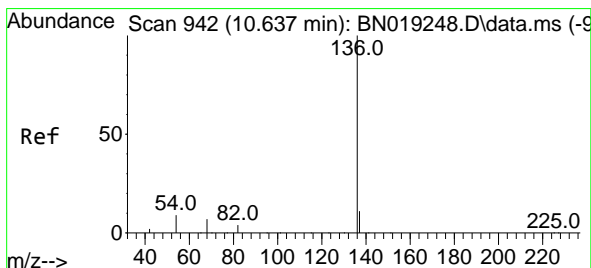
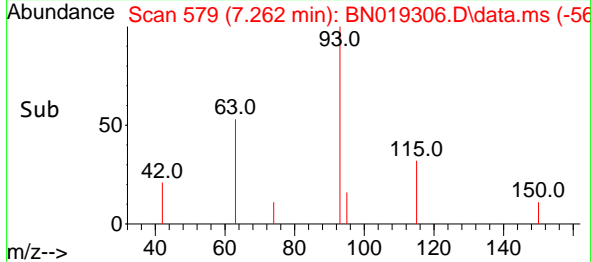
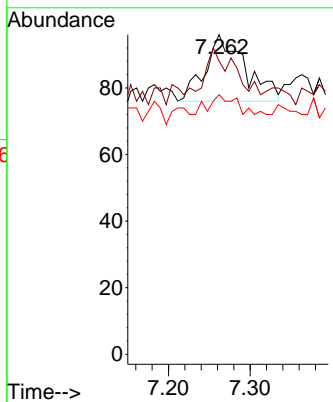
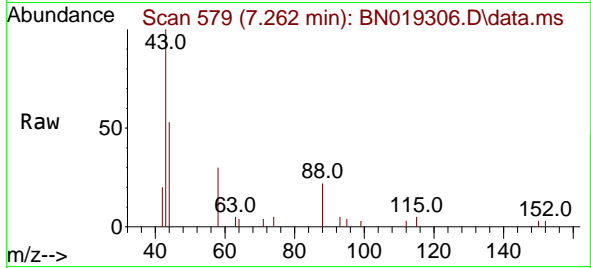


#6
 bis(2-Chloroethyl)ether
 Concen: 0.447 ng
 RT: 7.262 min Scan# 51
 Delta R.T. 0.014 min
 Lab File: BN019306.D
 Acq: 02 Apr 2022 03:30

Instrument :
 BNA_N
 ClientSampleId :
 FB0331

Tgt Ion: 93 Resp: 68

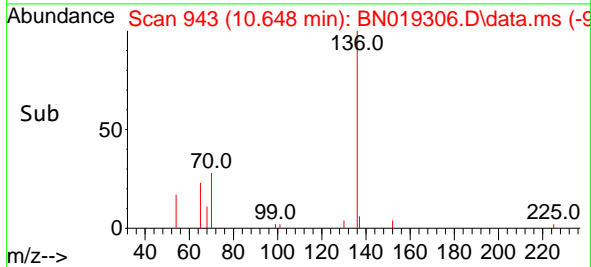
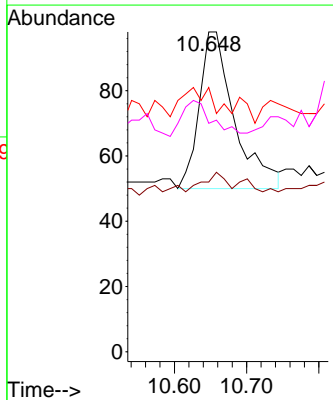
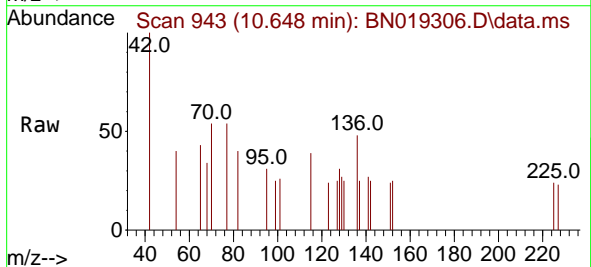
Ion	Ratio	Lower	Upper
93	100		
63	44.1	62.8	94.2#
95	38.2	26.2	39.4

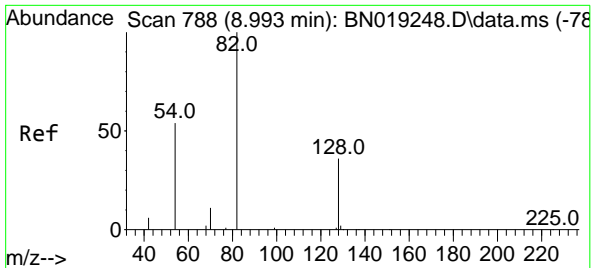


#7
 Naphthalene-d8
 Concen: 0.400 ng
 RT: 10.648 min Scan# 943
 Delta R.T. 0.011 min
 Lab File: BN019306.D
 Acq: 02 Apr 2022 03:30

Tgt Ion: 136 Resp: 163

Ion	Ratio	Lower	Upper
136	100		
137	53.1	9.0	13.4#
54	82.7	5.8	8.6#
68	71.4	4.6	7.0#



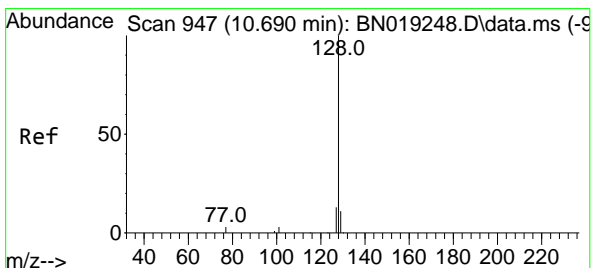
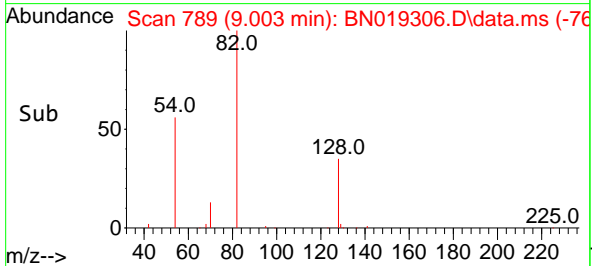
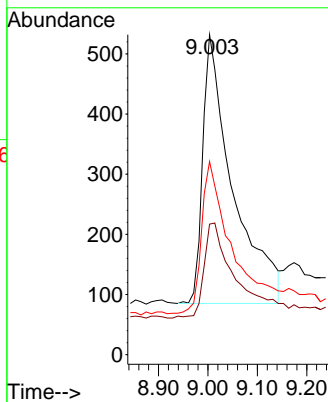
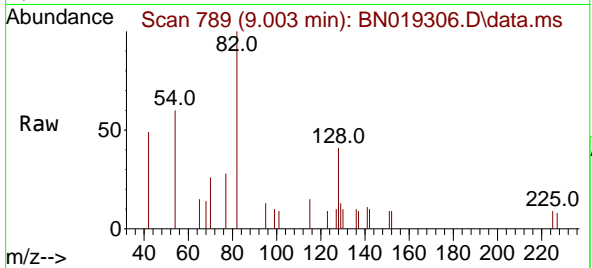


#8
 Nitrobenzene-d5
 Concen: 16.052 ng
 RT: 9.003 min Scan# 789
 Delta R.T. 0.011 min
 Lab File: BN019306.D
 Acq: 02 Apr 2022 03:30

Instrument :
 BNA_N
 ClientSampleId :
 FB0331

Tgt Ion: 82 Resp: 1879

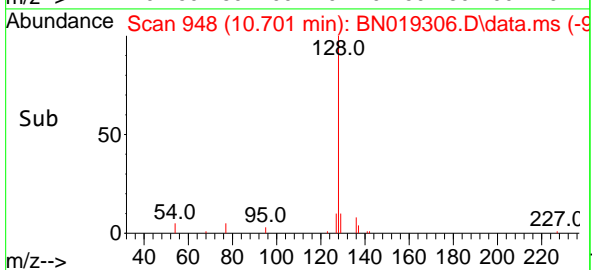
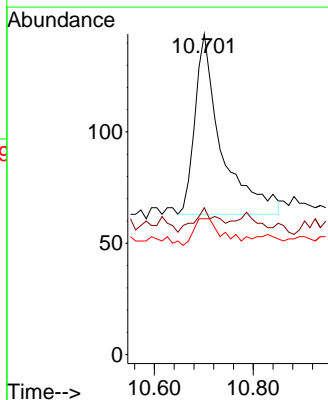
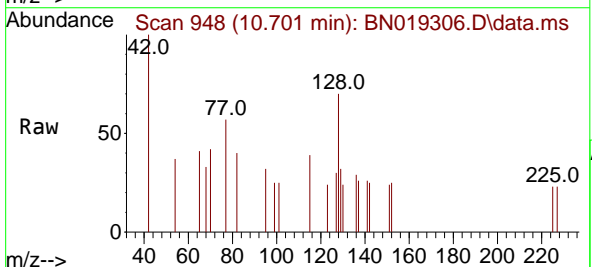
Ion	Ratio	Lower	Upper
82	100		
128	40.8	33.0	49.6
54	60.3	42.5	63.7

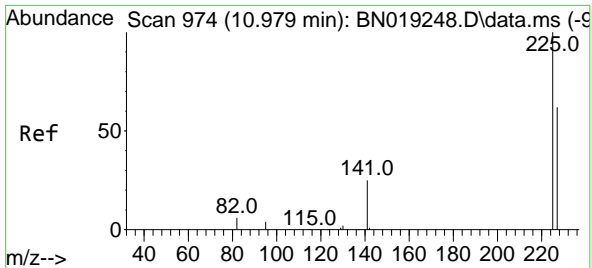


#9
 Naphthalene
 Concen: 0.637 ng
 RT: 10.701 min Scan# 948
 Delta R.T. 0.011 min
 Lab File: BN019306.D
 Acq: 02 Apr 2022 03:30

Tgt Ion: 128 Resp: 301

Ion	Ratio	Lower	Upper
128	100		
129	45.8	9.0	13.4#
127	42.4	10.7	16.1#



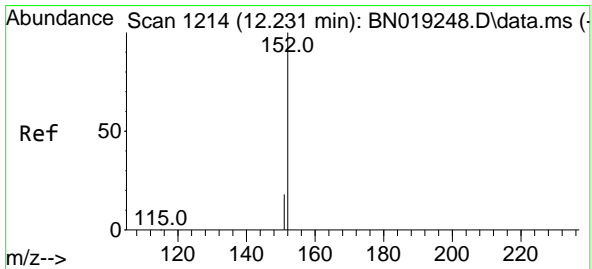
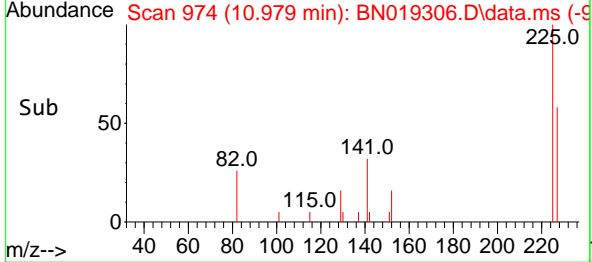
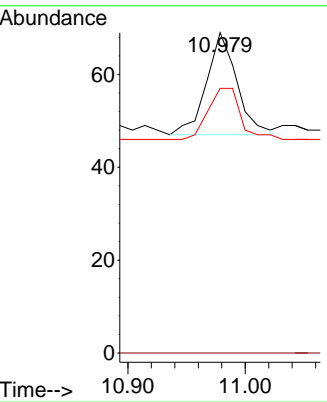
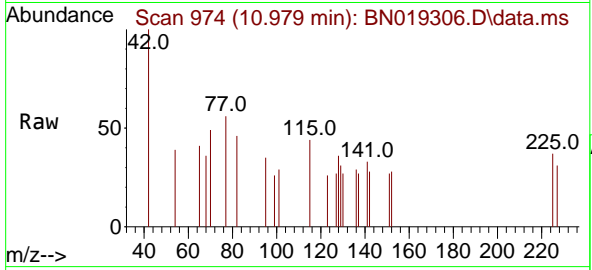


#10
 Hexachlorobutadiene
 Concen: 0.363 ng
 RT: 10.979 min Scan# 91
 Delta R.T. -0.000 min
 Lab File: BN019306.D
 Acq: 02 Apr 2022 03:30

Instrument : BNA_N
 ClientSampleId : FB0331

Tgt Ion:225 Resp: 40

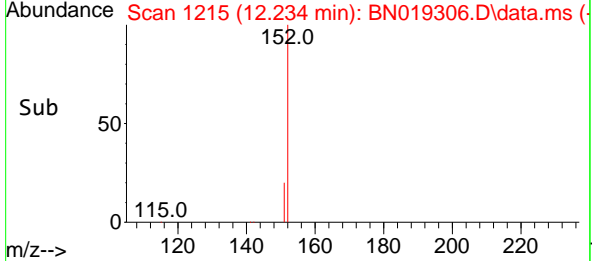
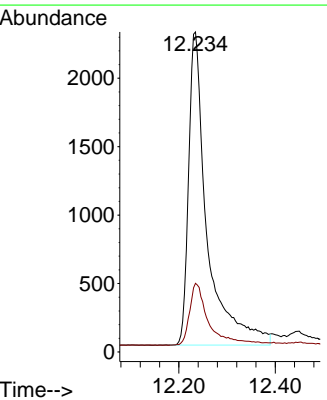
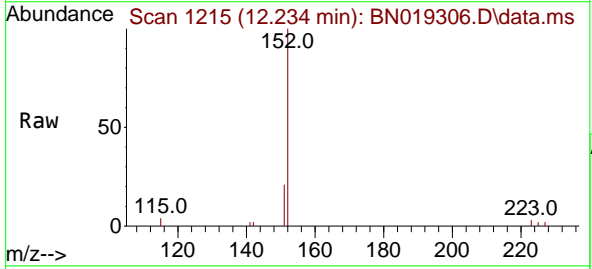
Ion	Ratio	Lower	Upper
225	100		
223	0.0	0.0	0.0
227	52.5	51.0	76.6

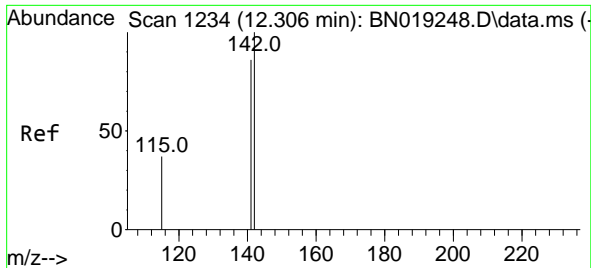


#11
 2-Methylnaphthalene-d10
 Concen: 23.646 ng
 RT: 12.234 min Scan# 1215
 Delta R.T. 0.004 min
 Lab File: BN019306.D
 Acq: 02 Apr 2022 03:30

Tgt Ion:152 Resp: 6120

Ion	Ratio	Lower	Upper
152	100		
151	20.7	16.5	24.7

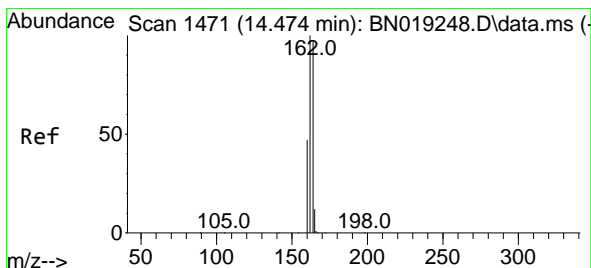
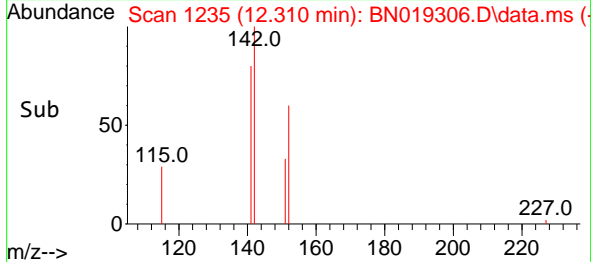
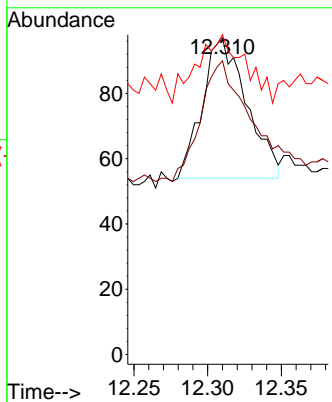
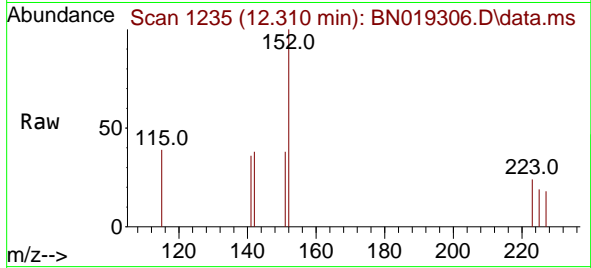




#12
 2-Methylnaphthalene
 Concen: 0.295 ng
 RT: 12.310 min Scan# 11
 Delta R.T. 0.004 min
 Lab File: BN019306.D
 Acq: 02 Apr 2022 03:30

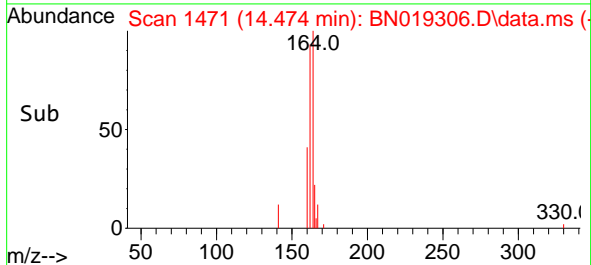
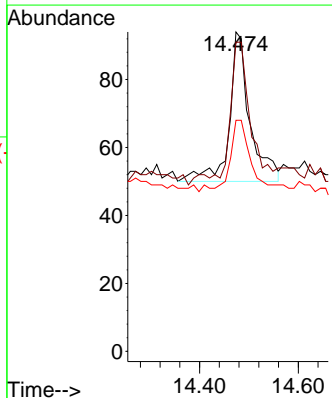
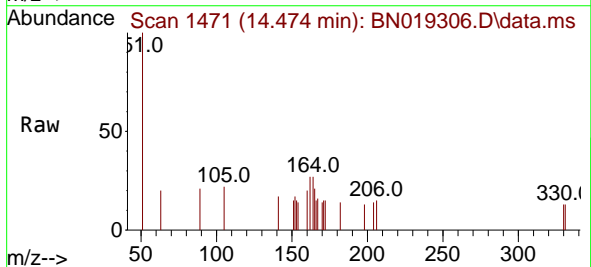
Instrument : BNA_N
 ClientSampleId : FB0331

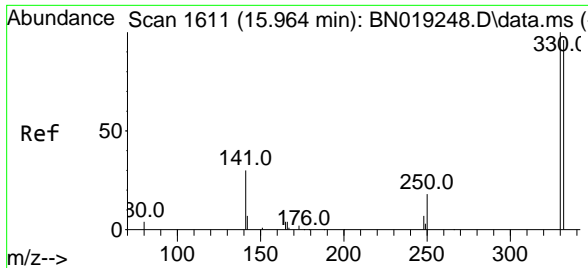
Tgt Ion	Resp	Lower	Upper
142	100		
141	92.8	70.0	105.0
115	101.0	29.8	44.8#



#13
 Acenaphthene-d10
 Concen: 0.400 ng
 RT: 14.474 min Scan# 1471
 Delta R.T. -0.000 min
 Lab File: BN019306.D
 Acq: 02 Apr 2022 03:30

Tgt Ion	Resp	Lower	Upper
164	100		
162	96.8	85.2	127.8
160	72.3	41.5	62.3#



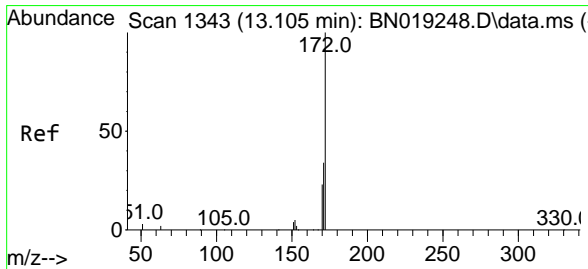
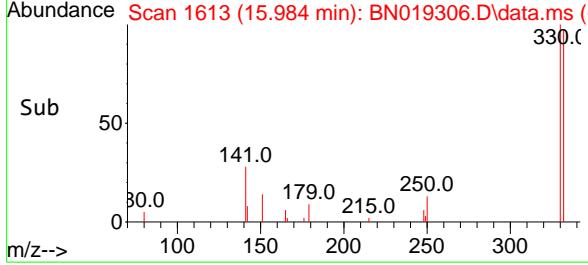
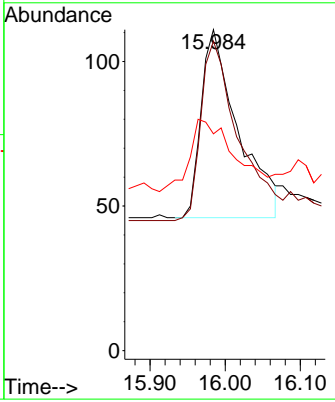
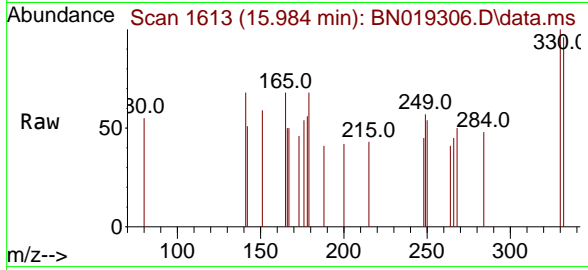


#14
 2,4,6-Tribromophenol
 Concen: 3.706 ng
 RT: 15.984 min Scan# 1613
 Delta R.T. 0.020 min
 Lab File: BN019306.D
 Acq: 02 Apr 2022 03:30

Instrument : BNA_N
 ClientSampleId : FB0331

Tgt Ion: 330 Resp: 222

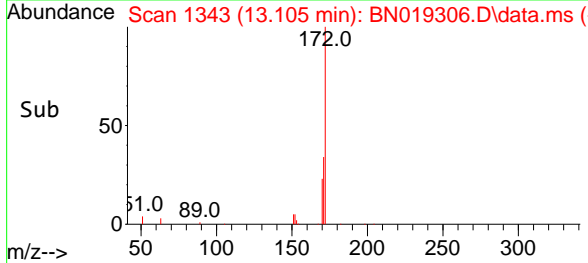
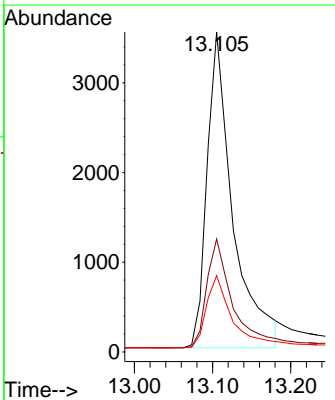
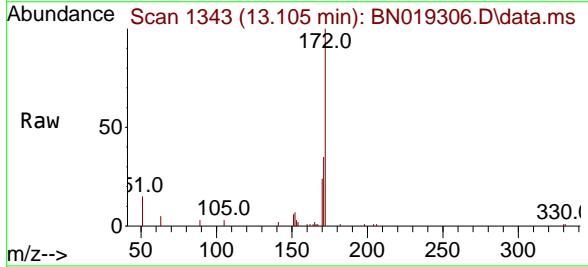
Ion	Ratio	Lower	Upper
330	100		
332	98.6	76.8	115.2
141	0.0	32.2	48.2

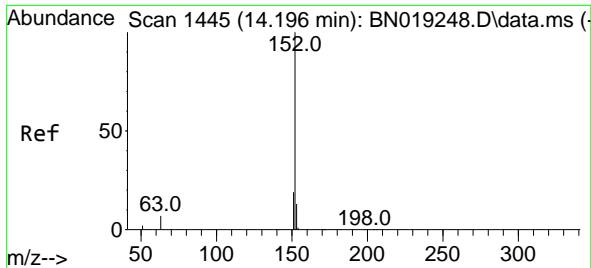


#15
 2-Fluorobiphenyl
 Concen: 15.683 ng
 RT: 13.105 min Scan# 1343
 Delta R.T. -0.000 min
 Lab File: BN019306.D
 Acq: 02 Apr 2022 03:30

Tgt Ion: 172 Resp: 8057

Ion	Ratio	Lower	Upper
172	100		
171	35.3	28.2	42.2
170	23.8	18.7	28.1

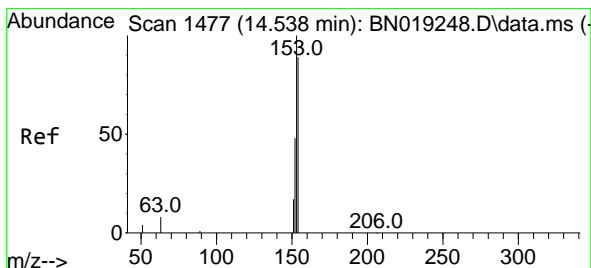
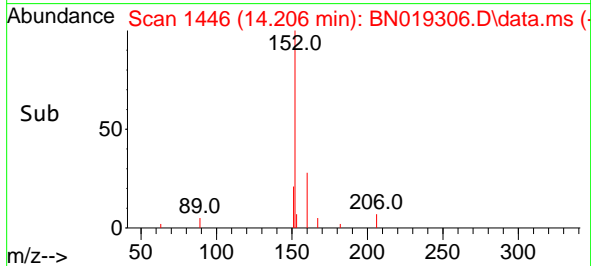
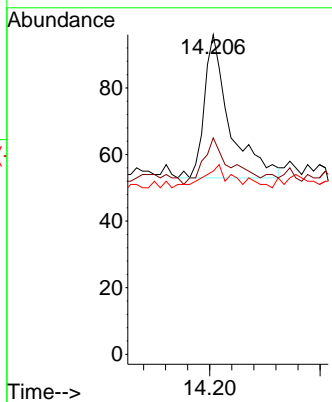
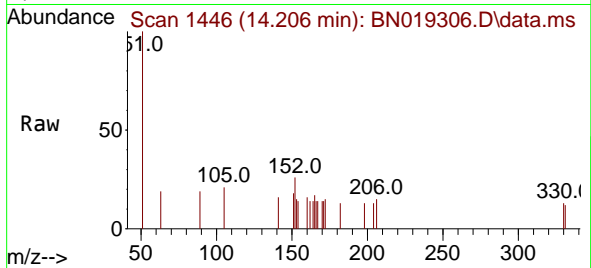




#16
 Acenaphthylene
 Concen: 0.232 ng
 RT: 14.206 min Scan# 1446
 Delta R.T. 0.011 min
 Lab File: BN019306.D
 Acq: 02 Apr 2022 03:30

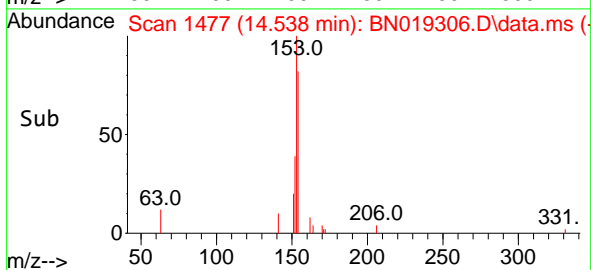
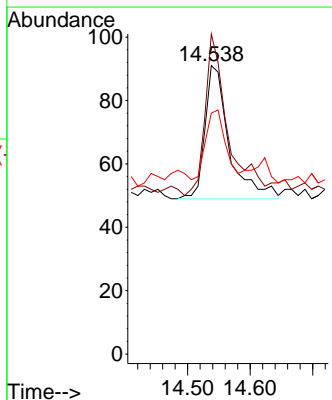
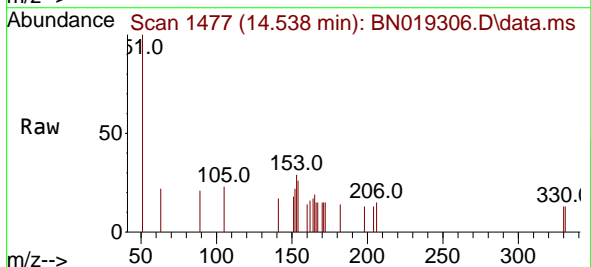
Instrument :
 BNA_N
 ClientSampleId :
 FB0331

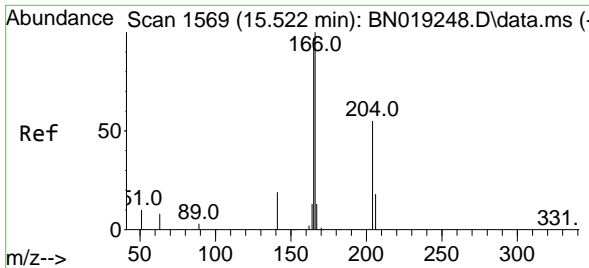
Tgt Ion	Resp	Lower	Upper
152	100		
151	35.0	15.9	23.9#
153	12.4	10.6	15.8



#17
 Acenaphthene
 Concen: 0.269 ng
 RT: 14.538 min Scan# 1477
 Delta R.T. -0.000 min
 Lab File: BN019306.D
 Acq: 02 Apr 2022 03:30

Tgt Ion	Resp	Lower	Upper
154	100		
153	115.0	89.7	134.5
152	46.0	44.7	67.1

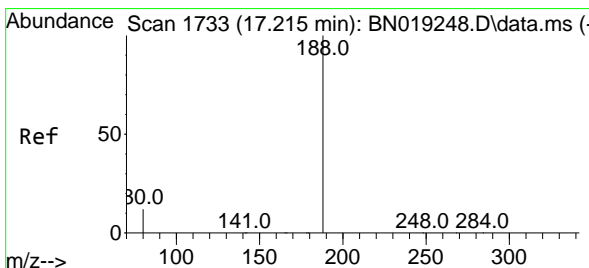
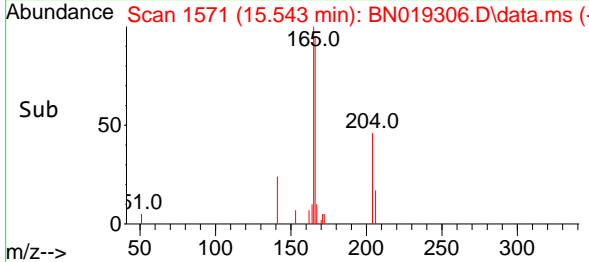
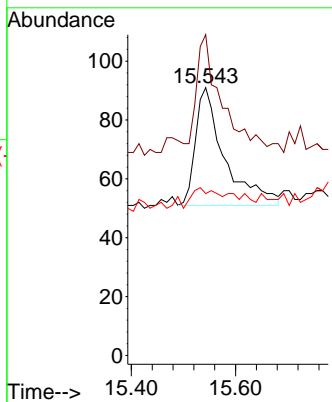
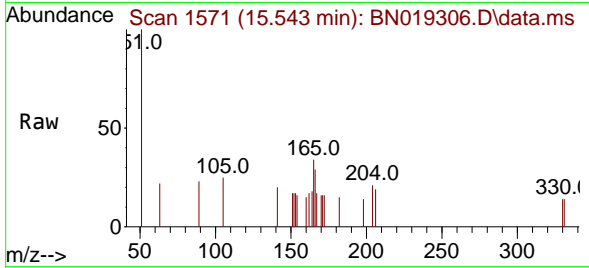




#18
 Fluorene
 Concen: 0.295 ng
 RT: 15.543 min Scan# 11
 Delta R.T. 0.021 min
 Lab File: BN019306.D
 Acq: 02 Apr 2022 03:30

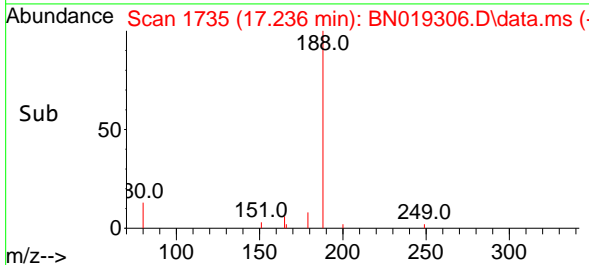
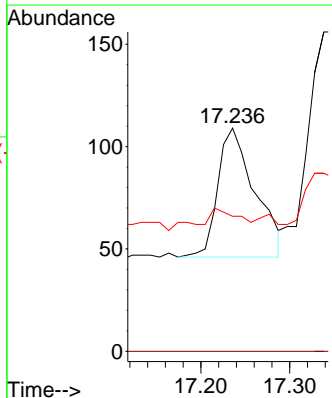
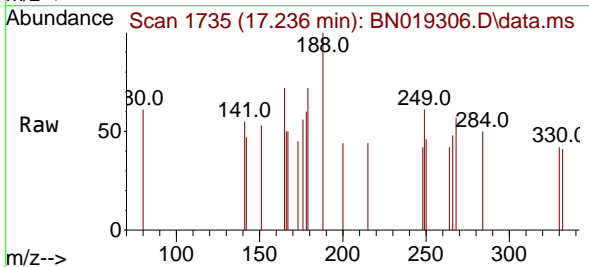
Instrument :
 BNA_N
 ClientSampleId :
 FB0331

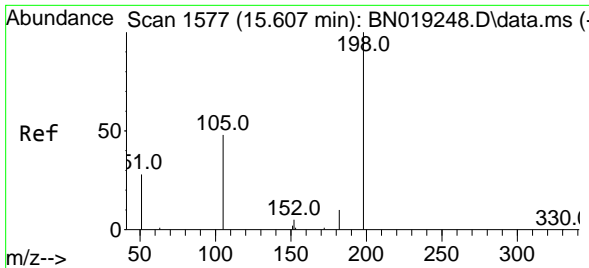
Tgt Ion	Resp	Lower	Upper
166	100		
165	81.3	79.2	118.8
167	14.8	10.7	16.1



#19
 Phenanthrene-d10
 Concen: 0.400 ng
 RT: 17.236 min Scan# 1735
 Delta R.T. 0.021 min
 Lab File: BN019306.D
 Acq: 02 Apr 2022 03:30

Tgt Ion	Resp	Lower	Upper
188	100		
94	0.0	0.0	0.0
80	60.6	11.8	17.8#

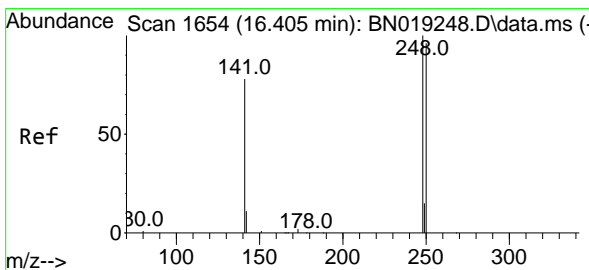
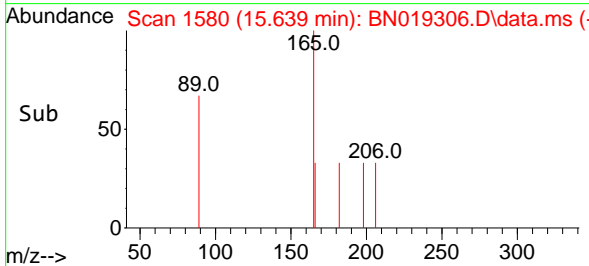
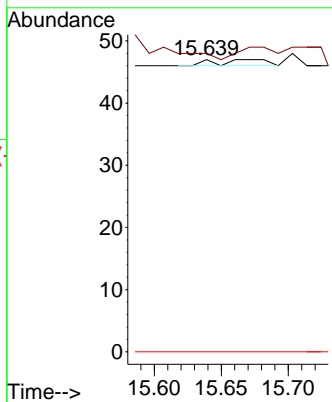
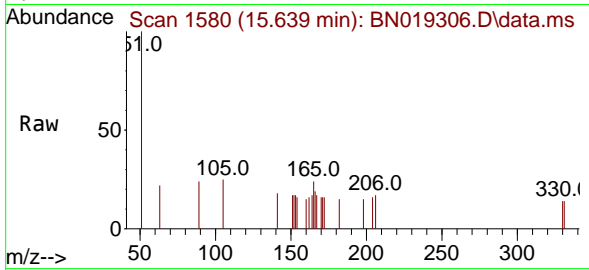




#20
 4,6-Dinitro-2-methylphenol
 Concen: 0.186 ng
 RT: 15.639 min Scan# 11
 Delta R.T. 0.032 min
 Lab File: BN019306.D
 Acq: 02 Apr 2022 03:30

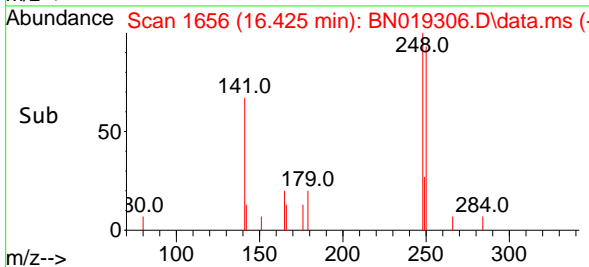
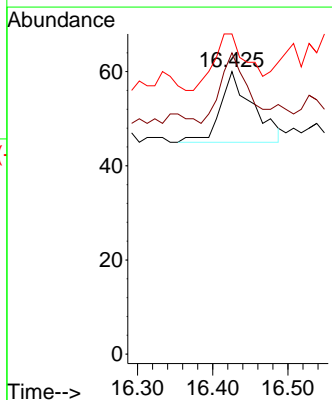
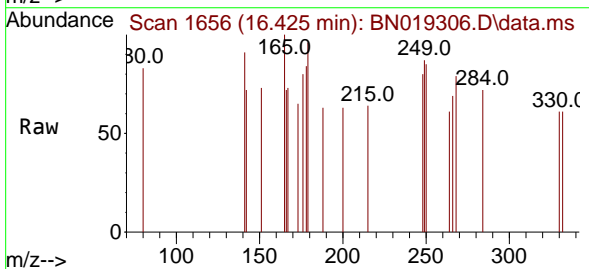
Instrument :
 BNA_N
 ClientSampleId :
 FB0331

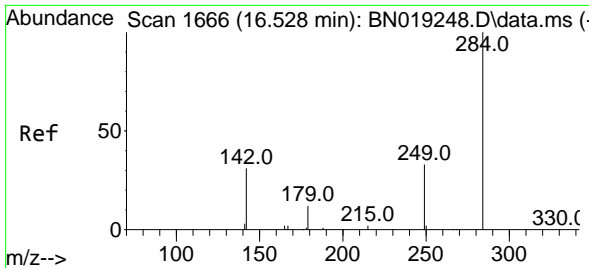
Tgt Ion:198 Resp: 3
 Ion Ratio Lower Upper
 198 100
 182 102.1 13.0 19.4#
 77 0.0 0.0 0.0



#21
 4-Bromophenyl-phenylether
 Concen: 0.383 ng
 RT: 16.425 min Scan# 1656
 Delta R.T. 0.020 min
 Lab File: BN019306.D
 Acq: 02 Apr 2022 03:30

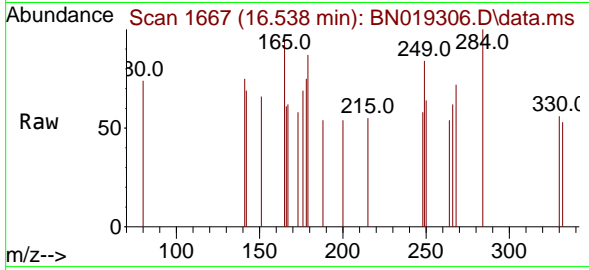
Tgt Ion:248 Resp: 45
 Ion Ratio Lower Upper
 248 100
 250 106.7 80.7 121.1
 141 113.3 39.6 59.4#



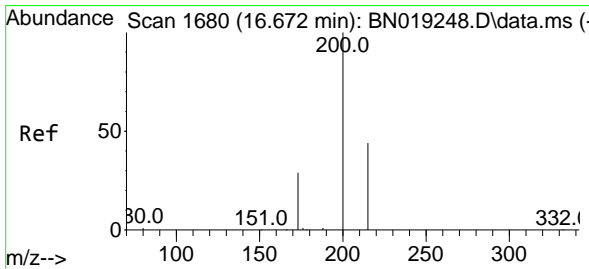
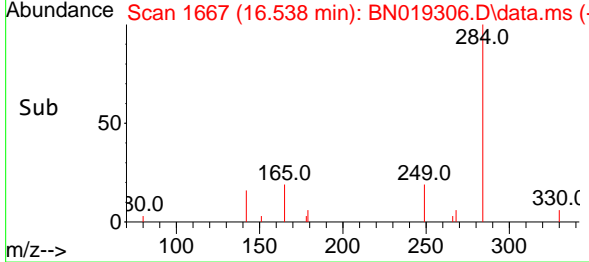
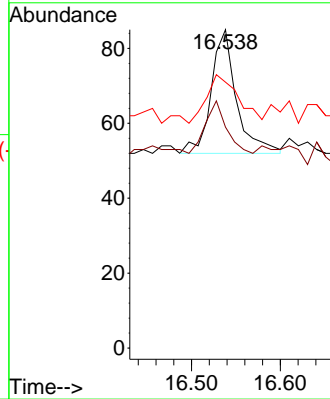


#22
 Hexachlorobenzene
 Concen: 0.425 ng
 RT: 16.538 min Scan# 1667
 Delta R.T. 0.010 min
 Lab File: BN019306.D
 Acq: 02 Apr 2022 03:30

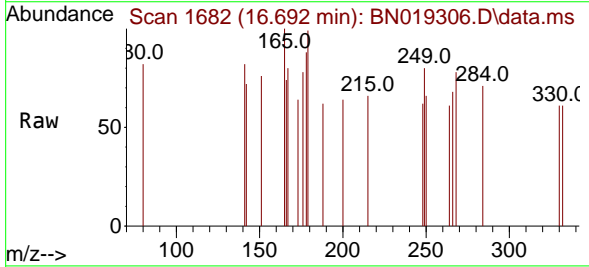
Instrument :
 BNA_N
 ClientSampleId :
 FB0331



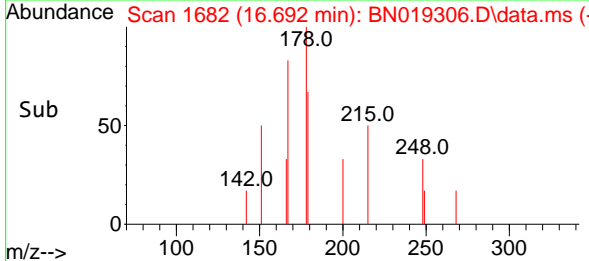
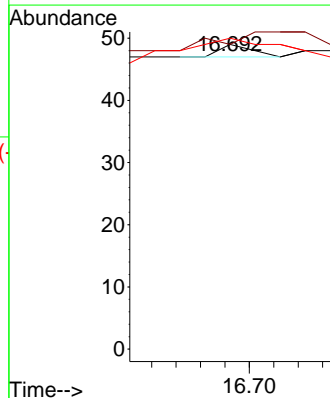
Tgt Ion:284 Resp: 65
 Ion Ratio Lower Upper
 284 100
 142 35.4 29.8 44.8
 249 49.2 26.2 39.2#

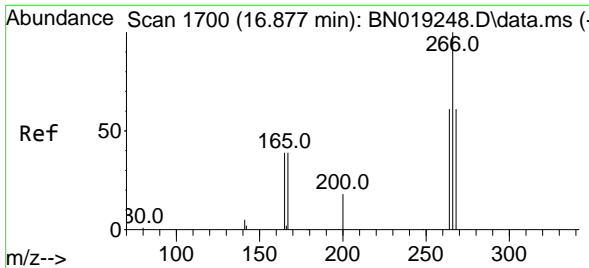


#23
 Atrazine
 Concen: 0.025 ng
 RT: 16.692 min Scan# 1682
 Delta R.T. 0.020 min
 Lab File: BN019306.D
 Acq: 02 Apr 2022 03:30



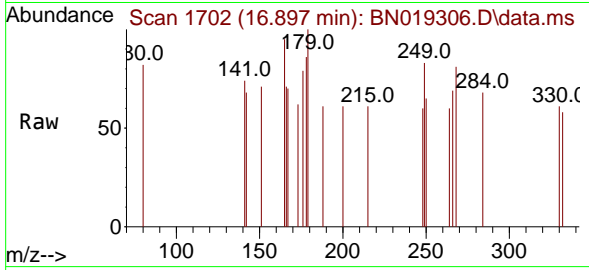
Tgt Ion:200 Resp: 2
 Ion Ratio Lower Upper
 200 100
 173 100.0 23.9 35.9#
 215 102.0 36.6 54.8#



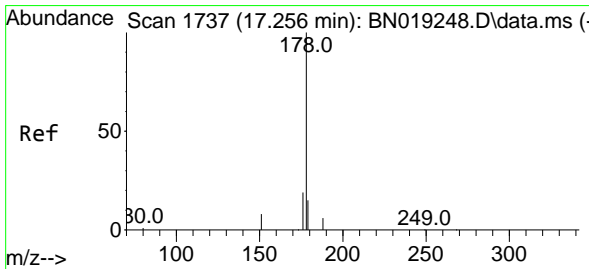
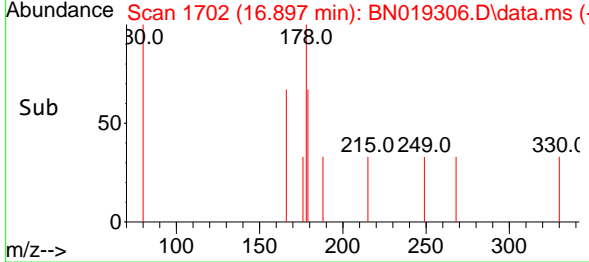
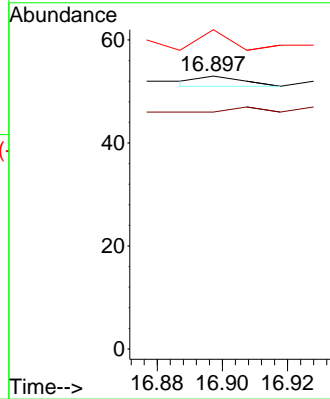


#24
 Pentachlorophenol
 Concen: 0.045 ng
 RT: 16.897 min Scan# 1702
 Delta R.T. 0.020 min
 Lab File: BN019306.D
 Acq: 02 Apr 2022 03:30

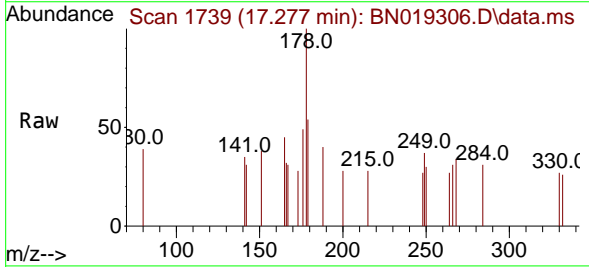
Instrument :
 BNA_N
 ClientSampleId :
 FB0331



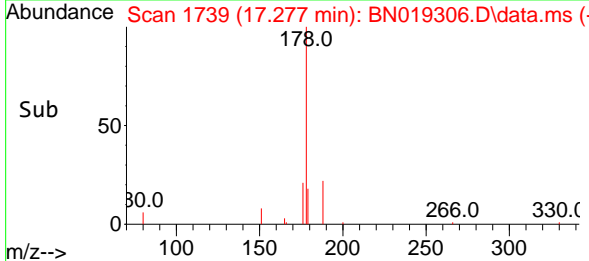
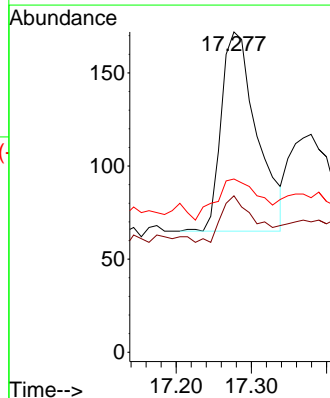
Tgt Ion:266 Resp: 2
 Ion Ratio Lower Upper
 266 100
 264 200.0 50.2 75.4#
 268 150.0 51.9 77.9#

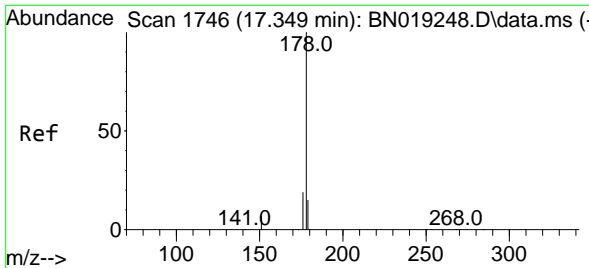


#25
 Phenanthrene
 Concen: 0.609 ng
 RT: 17.277 min Scan# 1739
 Delta R.T. 0.020 min
 Lab File: BN019306.D
 Acq: 02 Apr 2022 03:30



Tgt Ion:178 Resp: 351
 Ion Ratio Lower Upper
 178 100
 176 21.7 15.4 23.0
 179 24.5 12.2 18.2#

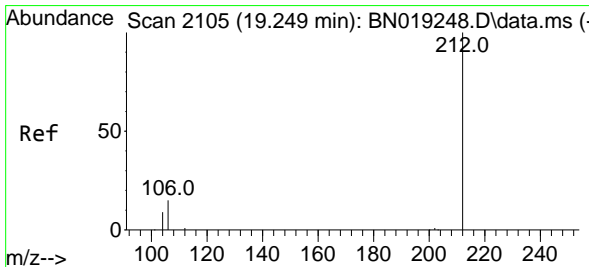
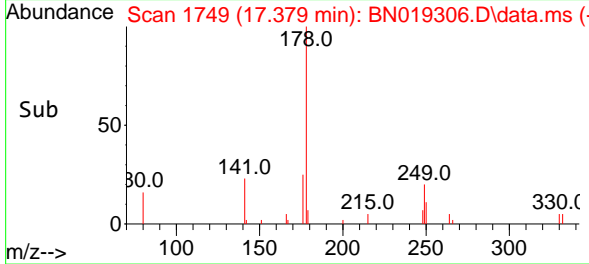
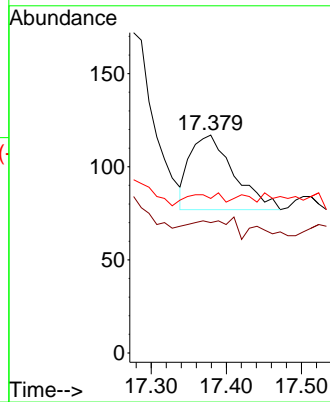
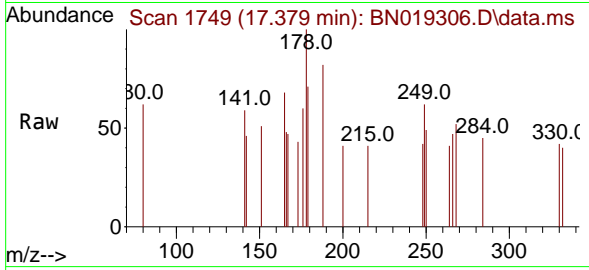




#26
 Anthracene
 Concen: 0.340 ng
 RT: 17.379 min Scan# 11
 Delta R.T. 0.031 min
 Lab File: BN019306.D
 Acq: 02 Apr 2022 03:30

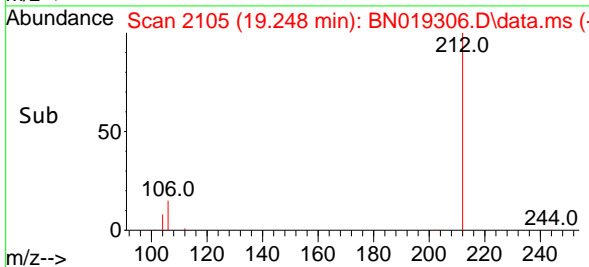
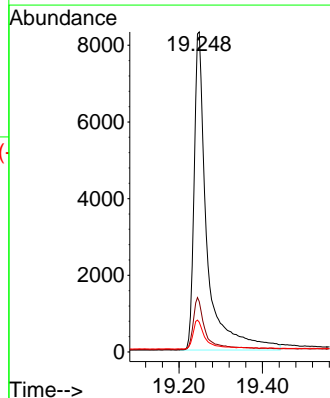
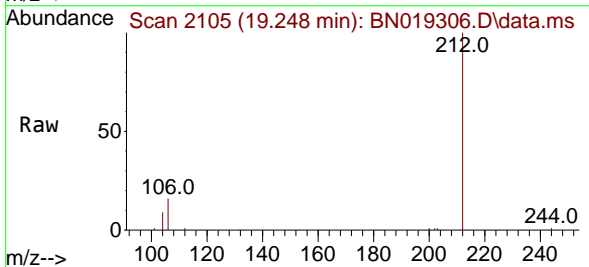
Instrument :
 BNA_N
 ClientSampleId :
 FB0331

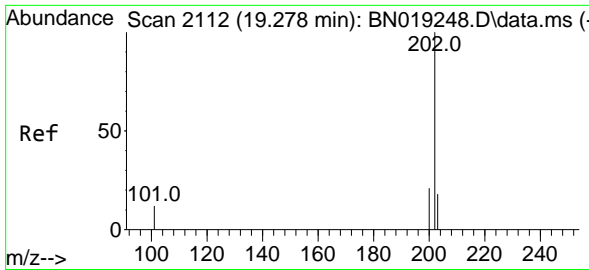
Tgt Ion:178 Resp: 162
 Ion Ratio Lower Upper
 178 100
 176 3.1 14.8 22.2#
 179 0.0 12.2 18.4#



#27
 Fluoranthene-d10
 Concen: 32.472 ng
 RT: 19.248 min Scan# 2105
 Delta R.T. -0.000 min
 Lab File: BN019306.D
 Acq: 02 Apr 2022 03:30

Tgt Ion:212 Resp: 17849
 Ion Ratio Lower Upper
 212 100
 106 15.8 12.7 19.1
 104 8.6 7.1 10.7

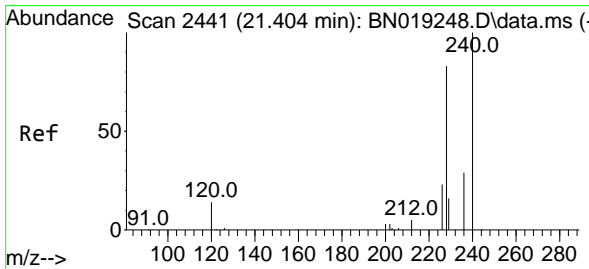
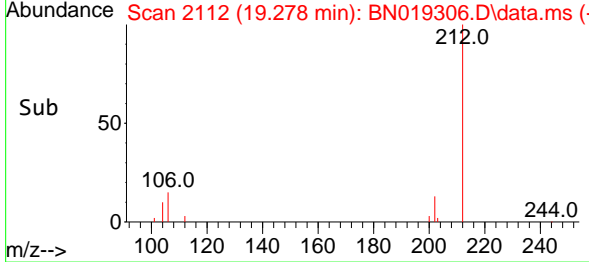
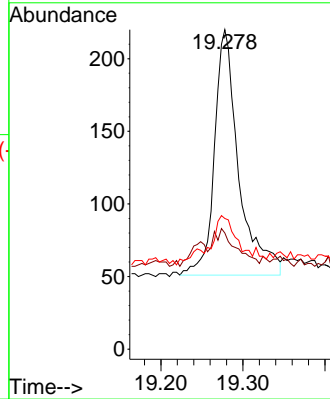
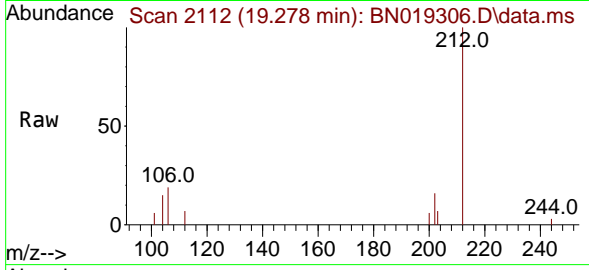




#28
 Fluoranthene
 Concen: 0.508 ng
 RT: 19.278 min Scan# 2112
 Delta R.T. -0.000 min
 Lab File: BN019306.D
 Acq: 02 Apr 2022 03:30

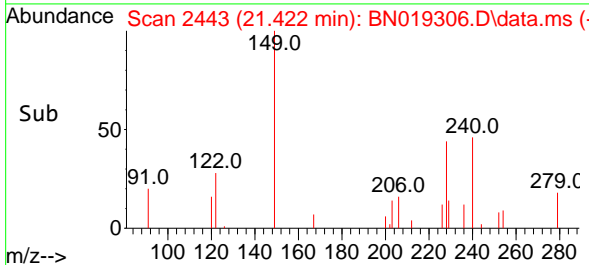
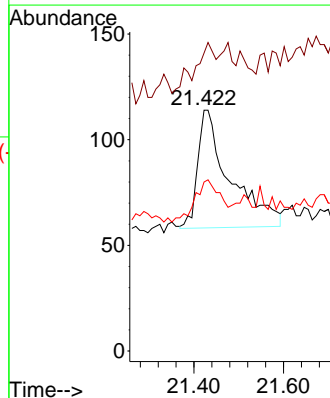
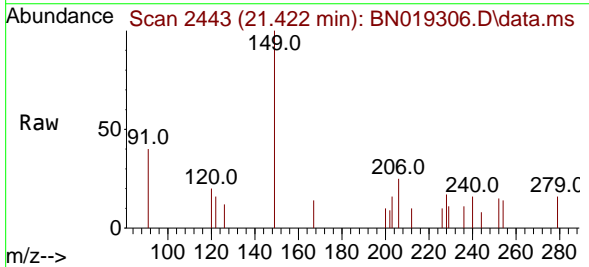
Instrument : BNA_N
 Client Sample Id : FB0331

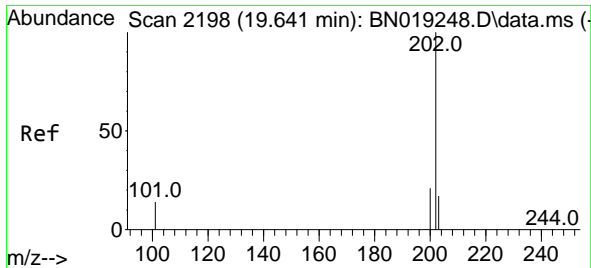
Tgt Ion	Resp	Lower	Upper
202	100		
101	14.9	9.8	14.6#
203	15.5	13.7	20.5



#29
 Chrysene-d12
 Concen: 0.400 ng
 RT: 21.422 min Scan# 2443
 Delta R.T. 0.018 min
 Lab File: BN019306.D
 Acq: 02 Apr 2022 03:30

Tgt Ion	Resp	Lower	Upper
240	100		
120	123.7	8.5	12.7#
236	70.2	22.4	33.6#



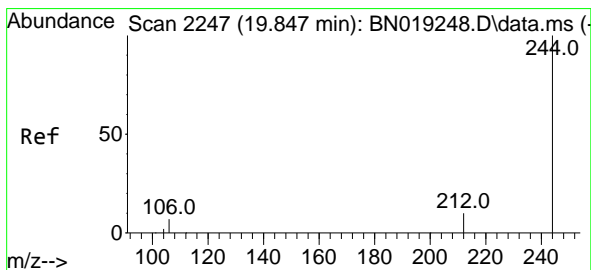
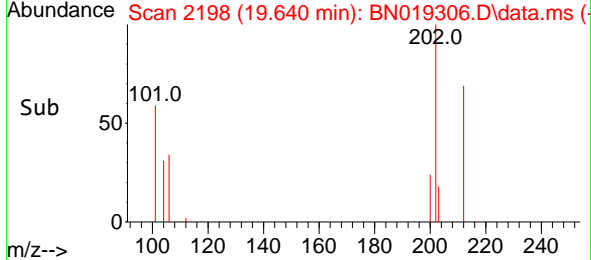
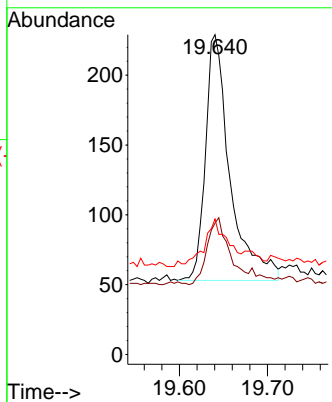
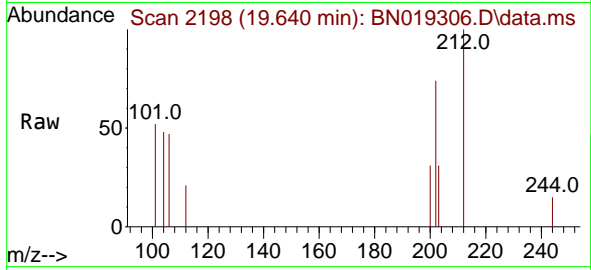


#30
 Pyrene
 Concen: 0.247 ng
 RT: 19.640 min Scan# 2198
 Delta R.T. -0.000 min
 Lab File: BN019306.D
 Acq: 02 Apr 2022 03:30

Instrument : BNA_N
 ClientSampleId : FB0331

Tgt Ion:202 Resp: 341

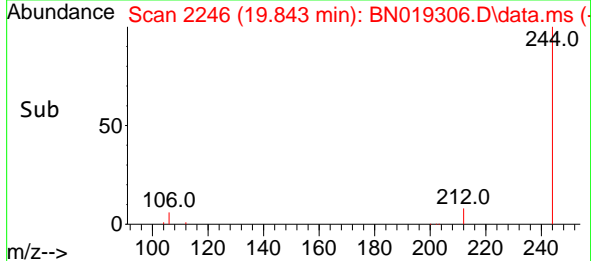
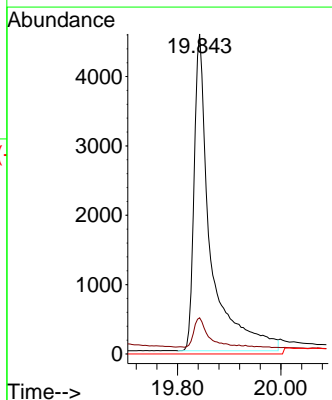
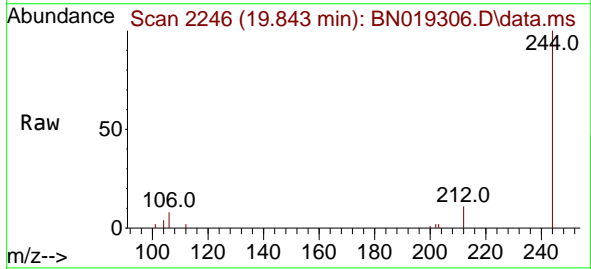
Ion	Ratio	Lower	Upper
202	100		
200	24.6	16.9	25.3
203	18.5	14.2	21.2

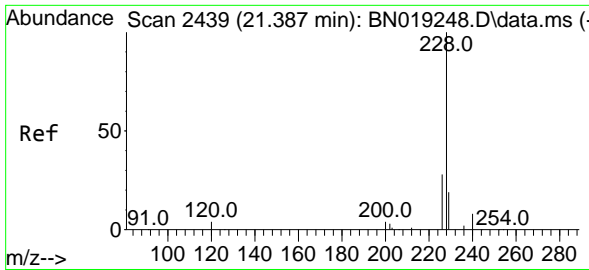


#31
 Terphenyl-d14
 Concen: 16.222 ng
 RT: 19.843 min Scan# 2246
 Delta R.T. -0.004 min
 Lab File: BN019306.D
 Acq: 02 Apr 2022 03:30

Tgt Ion:244 Resp: 10068

Ion	Ratio	Lower	Upper
244	100		
212	11.3	8.2	12.4
122	0.0	0.0	0.0



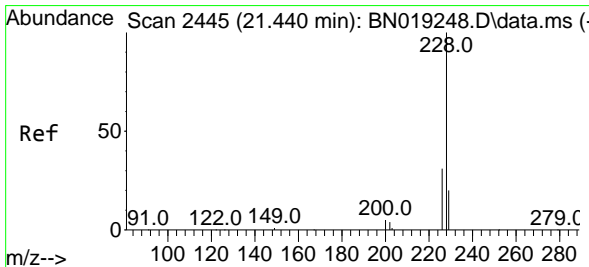
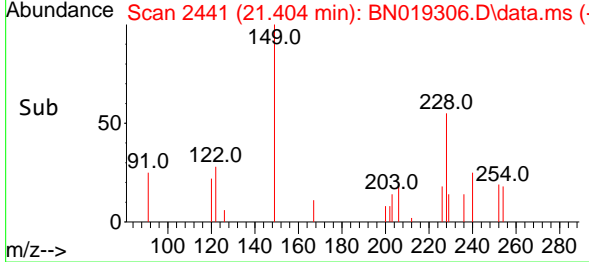
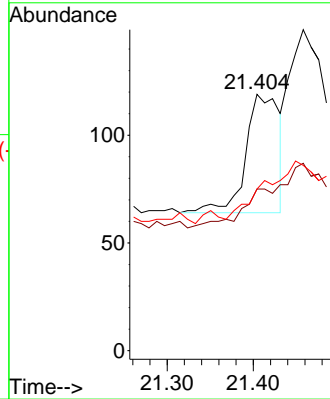
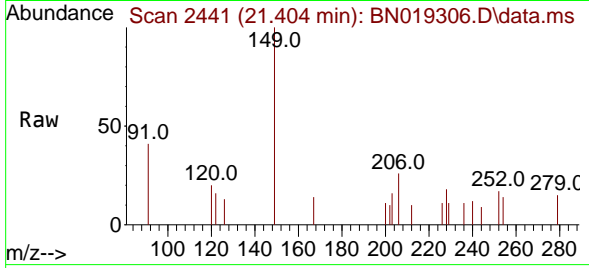


#32
 Benzo(a)anthracene
 Concen: 0.172 ng
 RT: 21.404 min Scan# 2441
 Delta R.T. 0.018 min
 Lab File: BN019306.D
 Acq: 02 Apr 2022 03:30

Instrument :
 BNA_N
 ClientSampleId :
 FB0331

Tgt Ion:228 Resp: 150

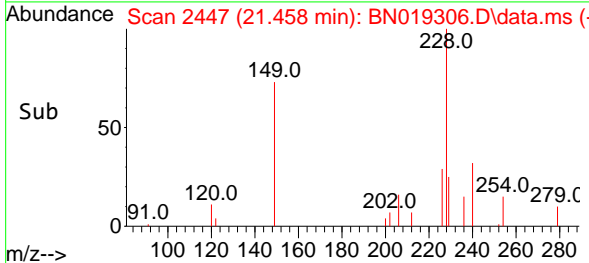
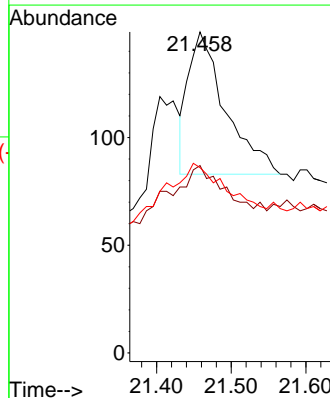
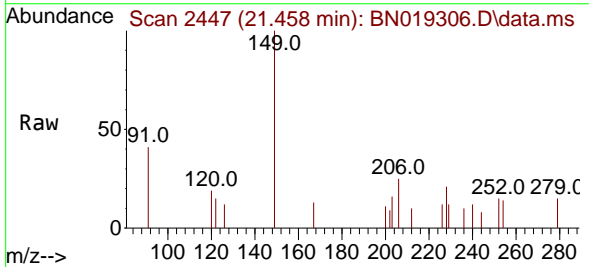
Ion	Ratio	Lower	Upper
228	100		
226	63.0	21.9	32.9#
229	63.0	16.0	24.0#

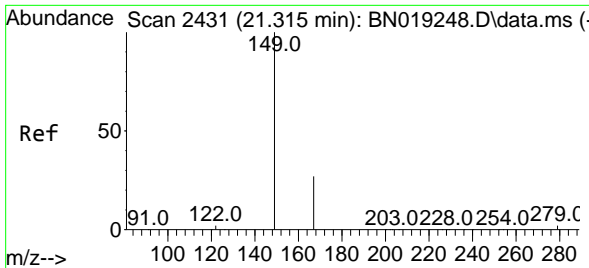


#33
 Chrysene
 Concen: 0.204 ng
 RT: 21.458 min Scan# 2447
 Delta R.T. 0.018 min
 Lab File: BN019306.D
 Acq: 02 Apr 2022 03:30

Tgt Ion:228 Resp: 228

Ion	Ratio	Lower	Upper
228	100		
226	58.4	24.0	36.0#
229	57.7	15.9	23.9#

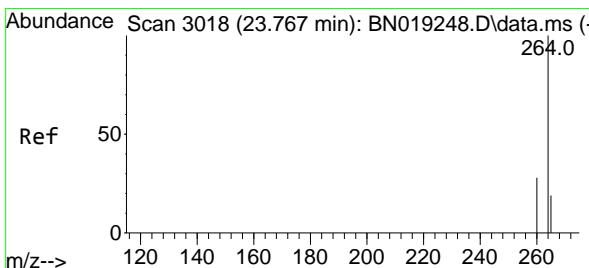
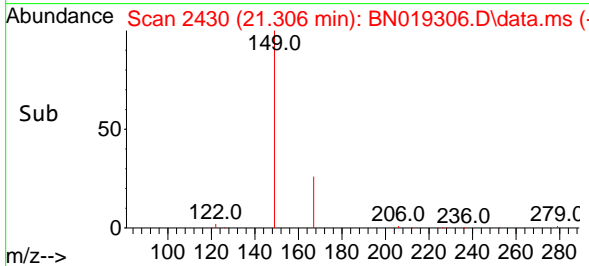
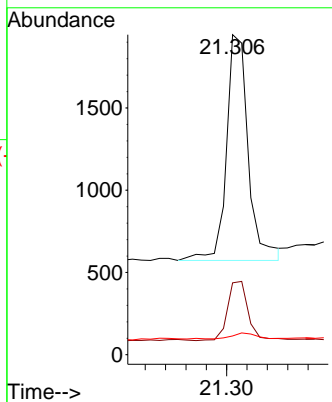
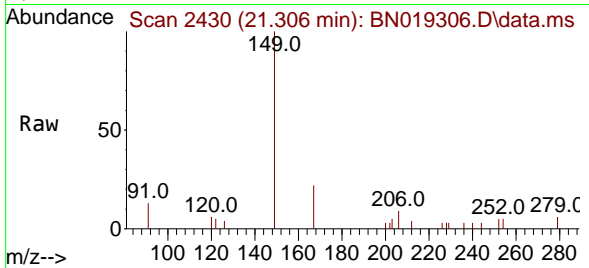




#34
 Bis(2-ethylhexyl)phthalate
 Concen: 3.495 ng
 RT: 21.306 min Scan# 24
 Delta R.T. -0.009 min
 Lab File: BN019306.D
 Acq: 02 Apr 2022 03:30

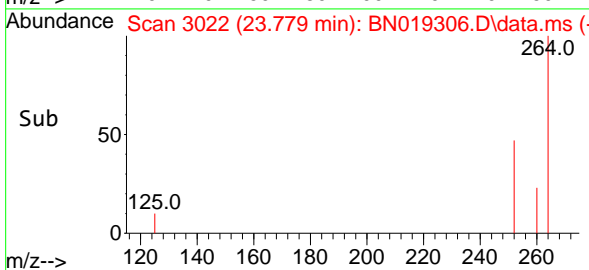
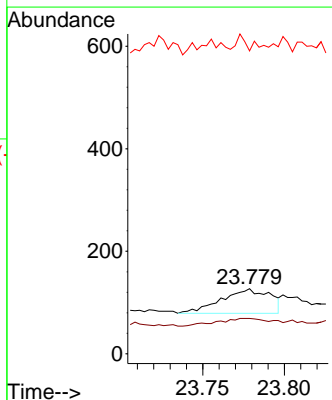
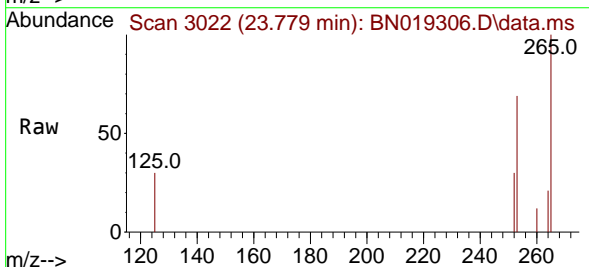
Instrument :
 BNA_N
 ClientSampleId :
 FB0331

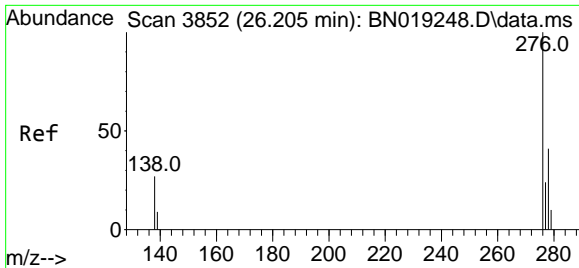
Tgt Ion	Resp	Lower	Upper
149	100		
167	25.2	21.8	32.8
279	3.1	2.0	3.0



#35
 Perylene-d12
 Concen: 0.400 ng
 RT: 23.779 min Scan# 3022
 Delta R.T. 0.012 min
 Lab File: BN019306.D
 Acq: 02 Apr 2022 03:30

Tgt Ion	Resp	Lower	Upper
264	100		
260	54.3	22.4	33.6
265	465.4	25.3	37.9



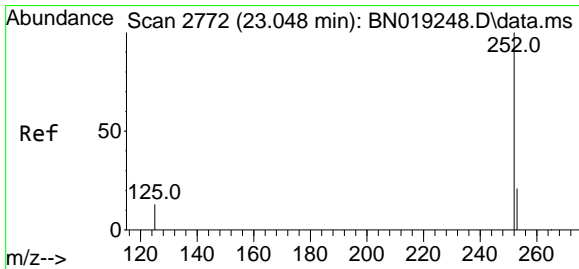
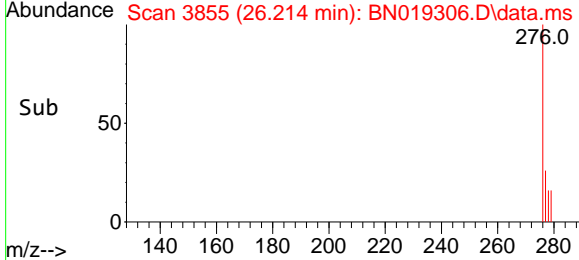
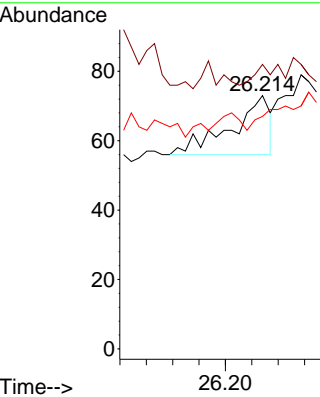
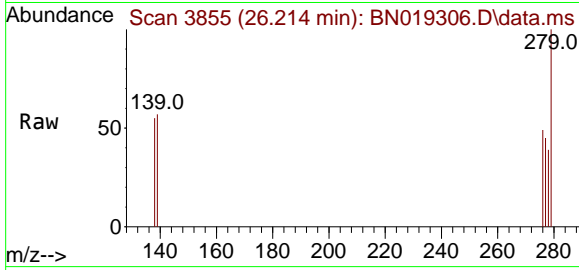


#36
 Indeno(1,2,3-cd)pyrene
 Concen: 0.042 ng
 RT: 26.214 min Scan# 3855
 Delta R.T. 0.009 min
 Lab File: BN019306.D
 Acq: 02 Apr 2022 03:30

Instrument : BNA_N
 ClientSampleId : FB0331

Tgt Ion: 276 Resp: 17

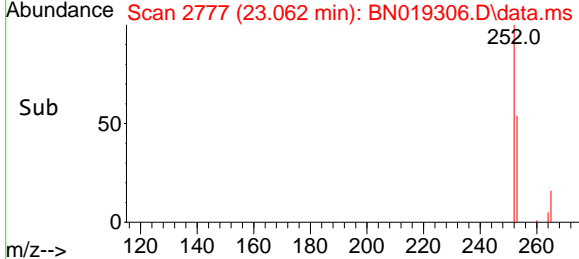
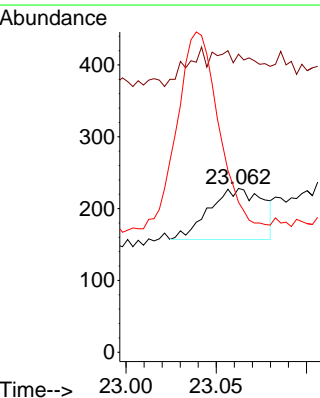
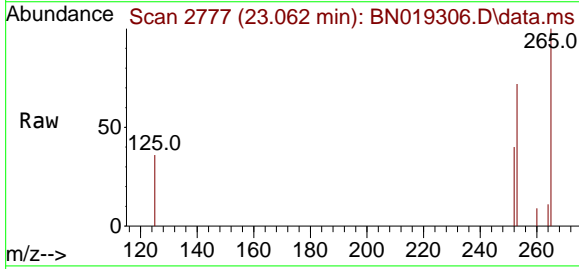
Ion	Ratio	Lower	Upper
276	100		
138	17.6	24.5	36.7#
277	0.0	19.8	29.8#

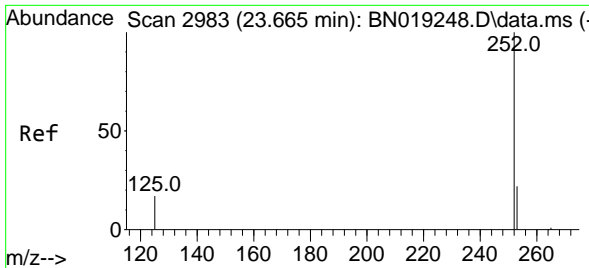


#37
 Benzo(b)fluoranthene
 Concen: 0.402 ng
 RT: 23.062 min Scan# 2777
 Delta R.T. 0.015 min
 Lab File: BN019306.D
 Acq: 02 Apr 2022 03:30

Tgt Ion: 252 Resp: 148

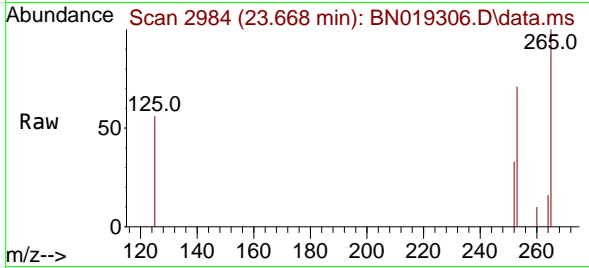
Ion	Ratio	Lower	Upper
252	100		
253	182.0	18.9	28.3#
125	91.7	12.1	18.1#



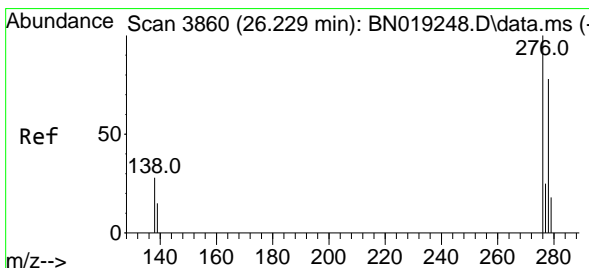
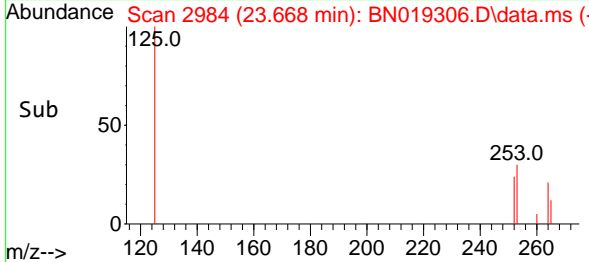
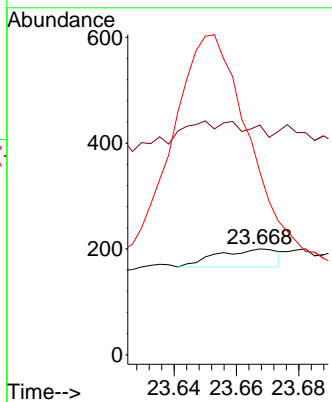


#39
 Benzo(a)pyrene
 Concen: 0.138 ng
 RT: 23.668 min Scan# 2984
 Delta R.T. 0.003 min
 Lab File: BN019306.D
 Acq: 02 Apr 2022 03:30

Instrument :
 BNA_N
 ClientSampleId :
 FB0331

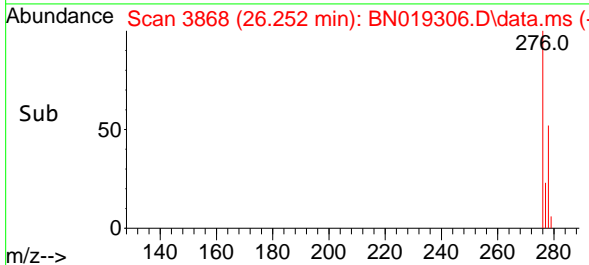
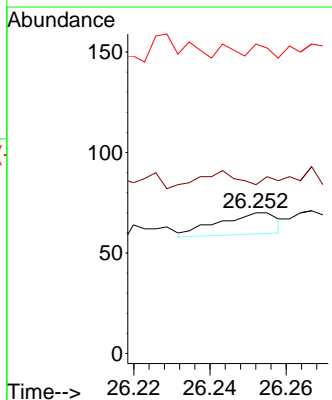
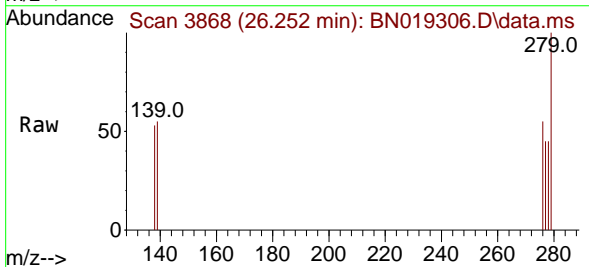


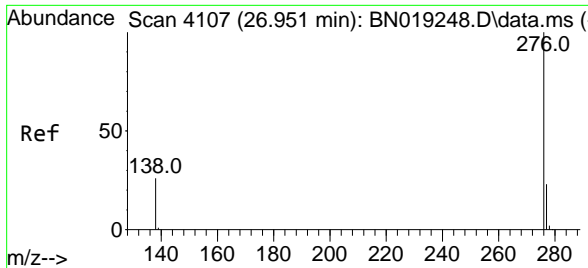
Tgt Ion:252 Resp: 46
 Ion Ratio Lower Upper
 252 100
 253 217.0 20.1 30.1#
 125 172.5 15.2 22.8#



#40
 Dibenzo(a,h)anthracene
 Concen: 0.037 ng
 RT: 26.252 min Scan# 3868
 Delta R.T. 0.023 min
 Lab File: BN019306.D
 Acq: 02 Apr 2022 03:30

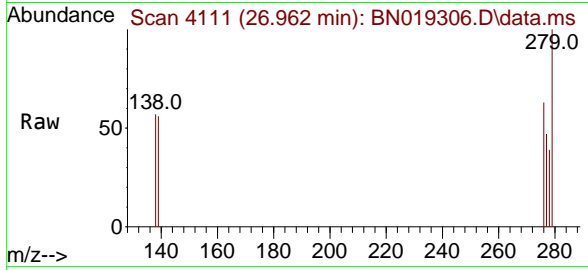
Tgt Ion:278 Resp: 11
 Ion Ratio Lower Upper
 278 100
 139 120.0 17.2 25.8#
 279 220.0 19.9 29.9#





#41
 Benzo(g,h,i)perylene
 Concen: 0.187 ng
 RT: 26.962 min Scan# 41
 Delta R.T. 0.012 min
 Lab File: BN019306.D
 Acq: 02 Apr 2022 03:30

Instrument :
 BNA_N
 ClientSampleId :
 FB0331



Tgt Ion: 276 Resp: 77

Ion	Ratio	Lower	Upper
276	100		
277	75.3	19.4	29.0#
138	90.3	21.0	31.6#

