

Data Path : Z:\svoasrv\HPCHEM1\BNA_N\Data\BN033122\
 Data File : BN019300.D
 Acq On : 01 Apr 2022 23:55
 Operator : CG/JU
 Sample : PB143805BL
 Misc :
 ALS Vial : 20 Sample Multiplier: 1

Instrument :
 BNA_N
 ClientSampleId :
 PB143805BL

Manual Integrations
 APPROVED

Reviewed By :Christian Giraldo 04/04/2022
 Supervised By :Jagrut Upadhyay 04/04/2022

Quant Time: Apr 02 01:47:20 2022
 Quant Method : Z:\SVOASRV\HPCHEM1\BNA_N\METHODS\8270-SIM-BN033122.M
 Quant Title : ASP BNA STANDARDS FOR 5 POINT CALIBRATION
 QLast Update : Thu Mar 31 12:41:03 2022
 Response via : Initial Calibration

Compound	R.T.	QIon	Response	Conc	Units	Dev(Min)
Internal Standards						
1) 1,4-Dichlorobenzene-d4	7.840	152	4917	0.400	ng	0.00
7) Naphthalene-d8	10.648	136	12928	0.400	ng	# 0.01
13) Acenaphthene-d10	14.474	164	8302	0.400	ng	0.00
19) Phenanthrene-d10	17.226	188	14866	0.400	ng	0.01
29) Chrysene-d12	21.404	240	11199	0.400	ng	# 0.00
35) Perylene-d12	23.764	264	9200	0.400	ng	# 0.00
System Monitoring Compounds						
4) 2-Fluorophenol	5.392	112	3939	0.366	ng	0.00
5) Phenol-d6	7.009	99	2941m	0.258	ng	0.01
8) Nitrobenzene-d5	9.025	82	1937	0.209	ng	0.03
11) 2-Methylnaphthalene-d10	12.246	152	6345	0.309	ng	0.02
14) 2,4,6-Tribromophenol	15.985	330	588	0.151	ng	0.02
15) 2-Fluorobiphenyl	13.116	172	7865	0.236	ng	0.01
27) Fluoranthene-d10	19.253	212	15380	0.344	ng	0.00
31) Terphenyl-d14	19.843	244	8402	0.337	ng	0.00

Target Compounds Qvalue

(#) = qualifier out of range (m) = manual integration (+) = signals summed

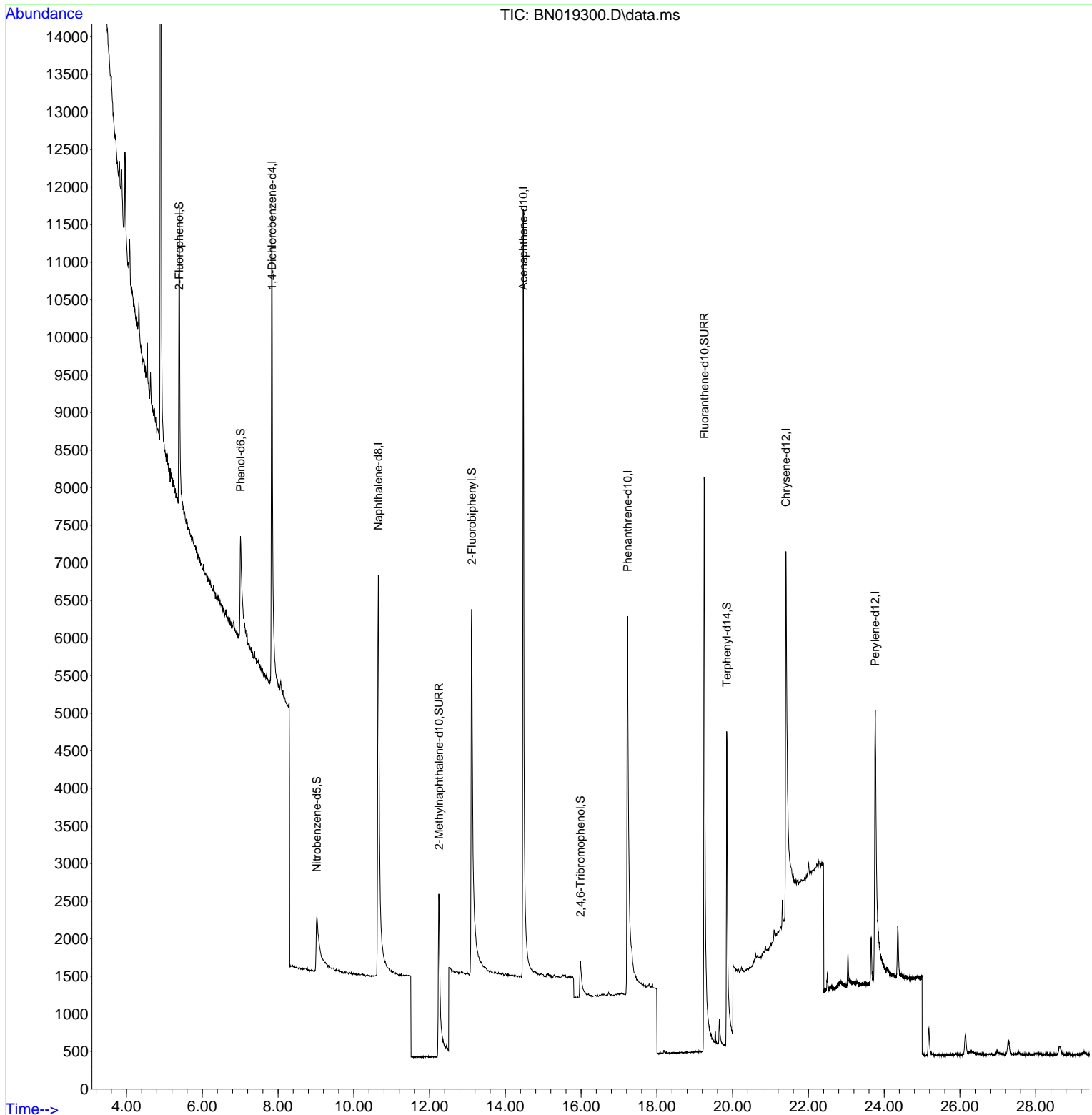
Data Path : Z:\svoasrv\HPCHEM1\BNA_N\Data\BN033122\
 Data File : BN019300.D
 Acq On : 01 Apr 2022 23:55
 Operator : CG/JU
 Sample : PB143805BL
 Misc :
 ALS Vial : 20 Sample Multiplier: 1

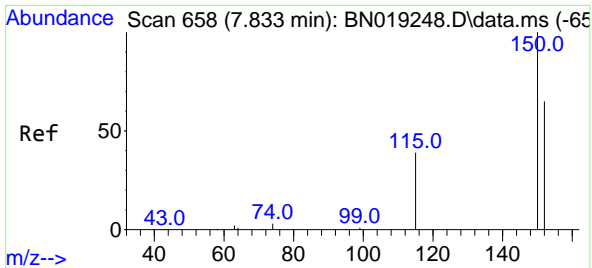
Instrument :
 BNA_N
ClientSampleId :
 PB143805BL

Manual Integrations
APPROVED

Reviewed By :Christian Giraldo 04/04/2022
 Supervised By :Jagrut Upadhyay 04/04/2022

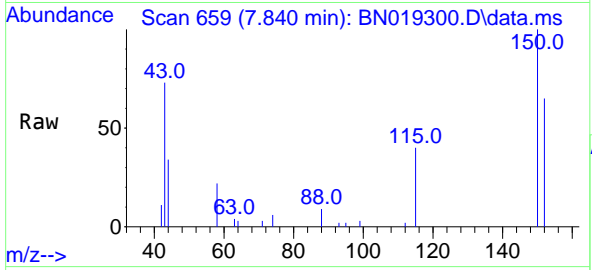
Quant Time: Apr 02 01:47:20 2022
 Quant Method : Z:\SVOASRV\HPCHEM1\BNA_N\METHODS\8270-SIM-BN033122.M
 Quant Title : ASP BNA STANDARDS FOR 5 POINT CALIBRATION
 QLast Update : Thu Mar 31 12:41:03 2022
 Response via : Initial Calibration





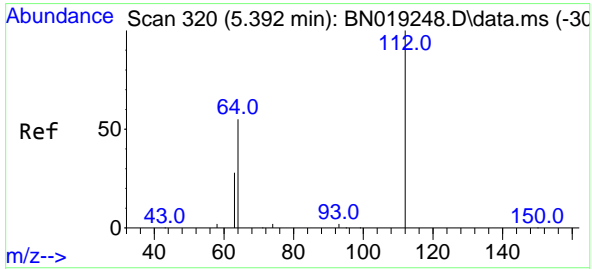
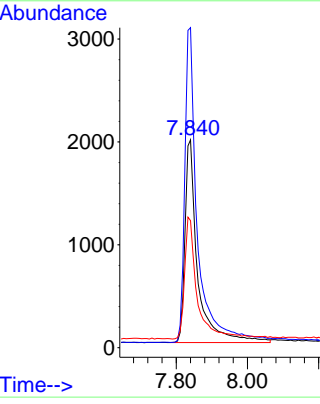
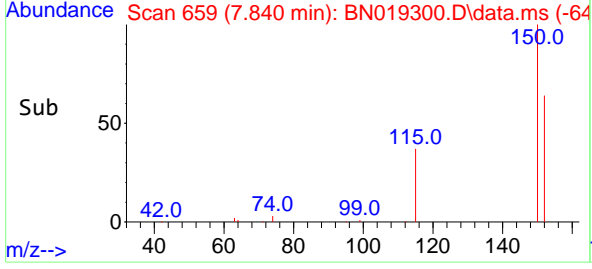
#1
 1,4-Dichlorobenzene-d4
 Concen: 0.400 ng
 RT: 7.840 min Scan# 61
 Delta R.T. 0.007 min
 Lab File: BN019300.D
 Acq: 01 Apr 2022 23:55

Instrument : BNA_N
 ClientSampleId : PB143805BL

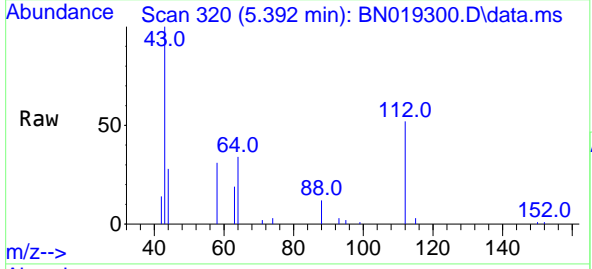


Tgt Ion:152 Resp: 491
 Ion Ratio Lower Upper
 152 100
 150 154.0 123.9 185.9
 115 61.2 48.2 72.4

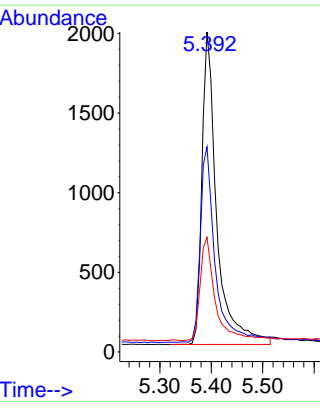
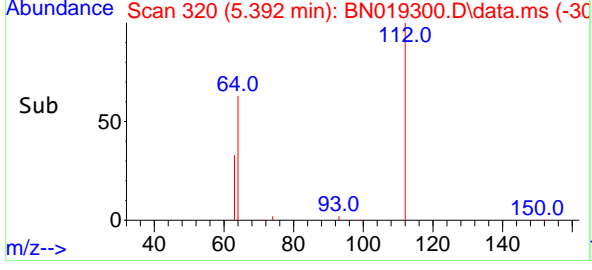
Manual Integrations
APPROVED
 Reviewed By :Christian Giraldo 04/04/2022
 Supervised By :Jagrut Upadhyay 04/04/2022

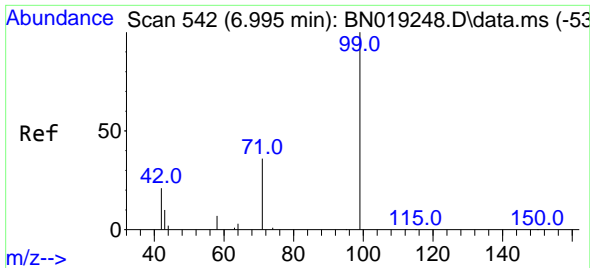


#4
 2-Fluorophenol
 Concen: 0.366 ng
 RT: 5.392 min Scan# 320
 Delta R.T. 0.000 min
 Lab File: BN019300.D
 Acq: 01 Apr 2022 23:55



Tgt Ion:112 Resp: 3939
 Ion Ratio Lower Upper
 112 100
 64 62.6 47.8 71.8
 63 33.9 25.7 38.5





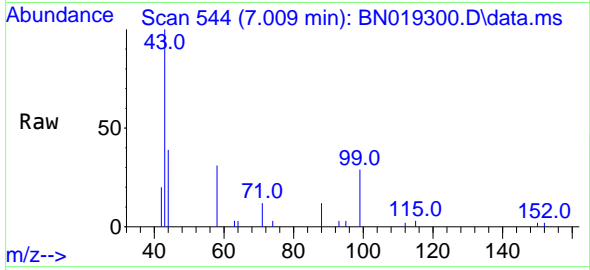
#5
Phenol-d6
Concen: 0.258 ng m
RT: 7.009 min Scan# 54
Delta R.T. 0.014 min
Lab File: BN019300.D
Acq: 01 Apr 2022 23:55

Instrument :

BNA_N

ClientSampleId :

PB143805BL

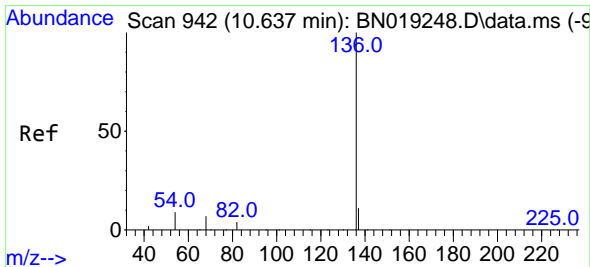
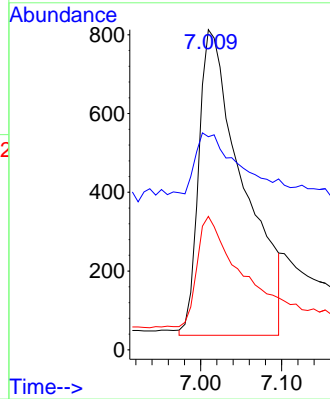
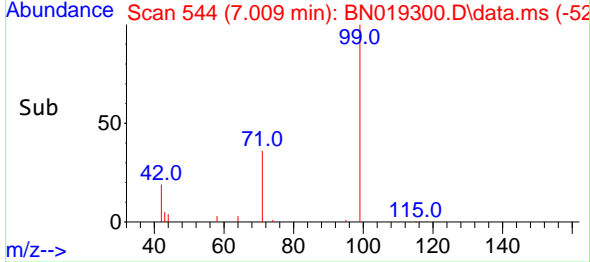


Tgt Ion: 99 Resp: 294
Ion Ratio Lower Upper
99 100
42 17.1 16.2 24.4
71 32.7 27.7 41.5

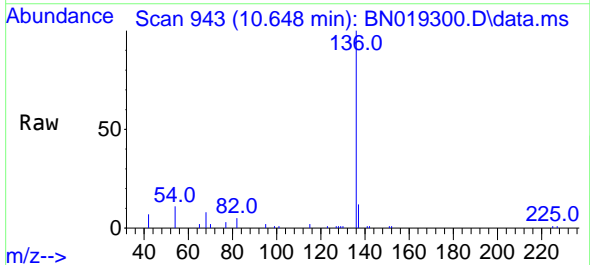
Manual Integrations

APPROVED

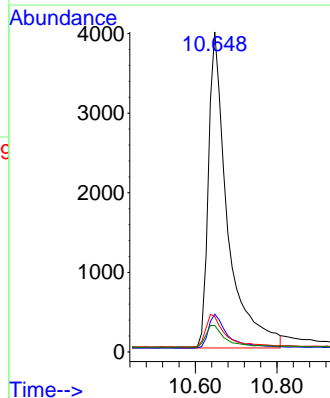
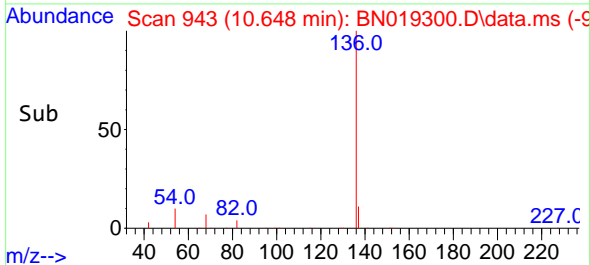
Reviewed By :Christian Giraldo 04/04/2022
Supervised By :Jagrut Upadhyay 04/04/2022

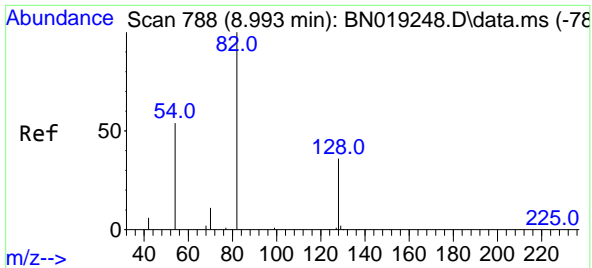


#7
Naphthalene-d8
Concen: 0.400 ng
RT: 10.648 min Scan# 943
Delta R.T. 0.011 min
Lab File: BN019300.D
Acq: 01 Apr 2022 23:55



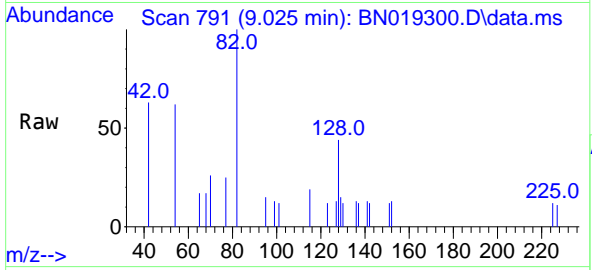
Tgt Ion:136 Resp: 12928
Ion Ratio Lower Upper
136 100
137 11.8 9.0 13.4
54 11.0 5.8 8.6#
68 8.3 4.6 7.0#





#8
 Nitrobenzene-d5
 Concen: 0.209 ng
 RT: 9.025 min Scan# 791
 Delta R.T. 0.032 min
 Lab File: BN019300.D
 Acq: 01 Apr 2022 23:55

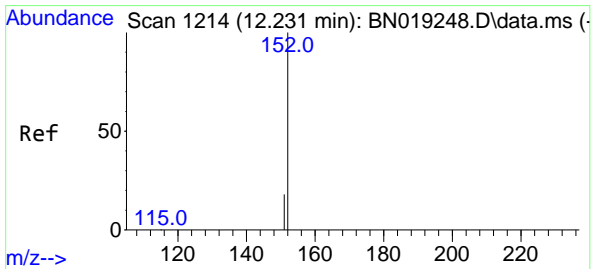
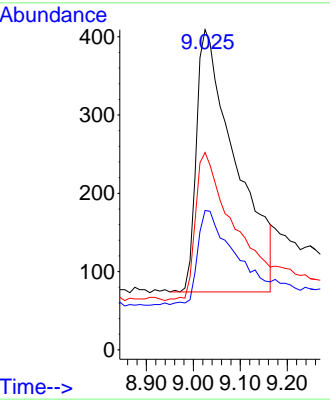
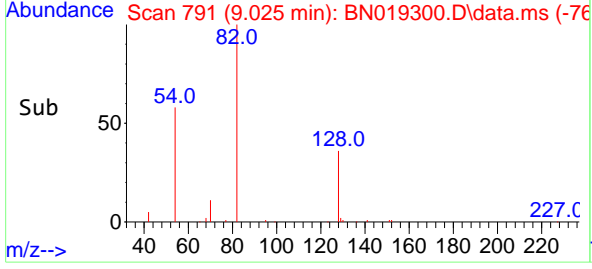
Instrument : BNA_N
 Client Sample Id : PB143805BL



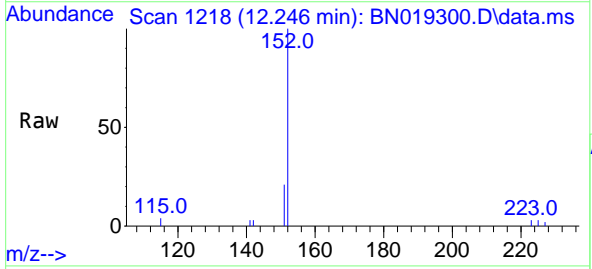
Tgt Ion: 82 Resp: 193

Ion	Ratio	Lower	Upper
82	100		
128	43.5	33.0	49.6
54	61.6	42.5	63.7

Manual Integrations
APPROVED
 Reviewed By :Christian Giraldo 04/04/2022
 Supervised By :Jagrut Upadhyay 04/04/2022

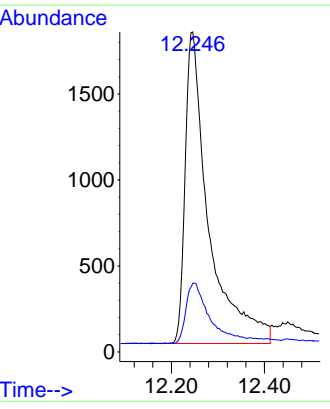
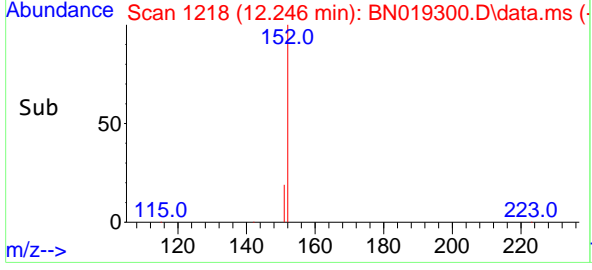


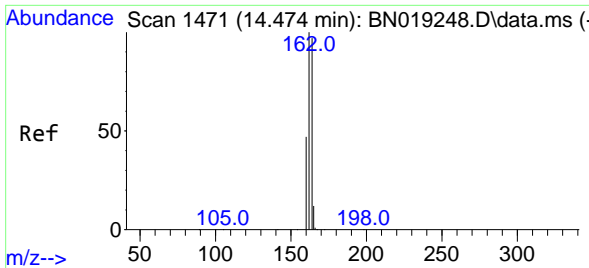
#11
 2-Methylnaphthalene-d10
 Concen: 0.309 ng
 RT: 12.246 min Scan# 1218
 Delta R.T. 0.015 min
 Lab File: BN019300.D
 Acq: 01 Apr 2022 23:55



Tgt Ion:152 Resp: 6345

Ion	Ratio	Lower	Upper
152	100		
151	19.9	16.5	24.7





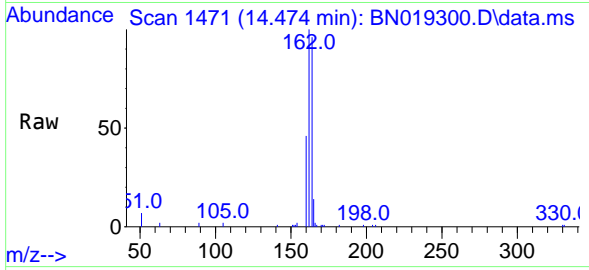
#13
 Acenaphthene-d10
 Concen: 0.400 ng
 RT: 14.474 min Scan# 1471
 Delta R.T. 0.000 min
 Lab File: BN019300.D
 Acq: 01 Apr 2022 23:55

Instrument :

BNA_N

ClientSampleId :

PB143805BL

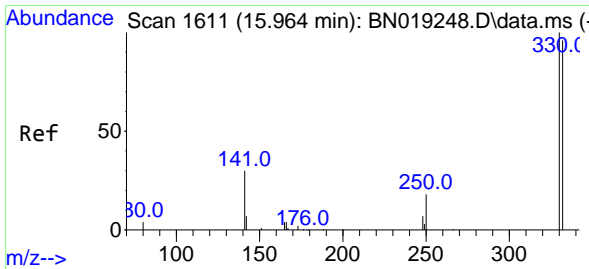
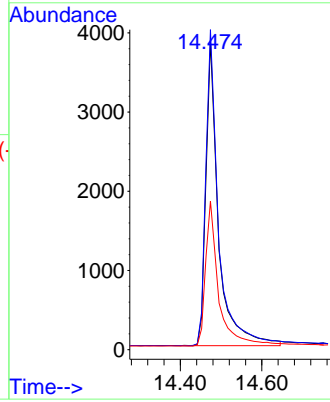
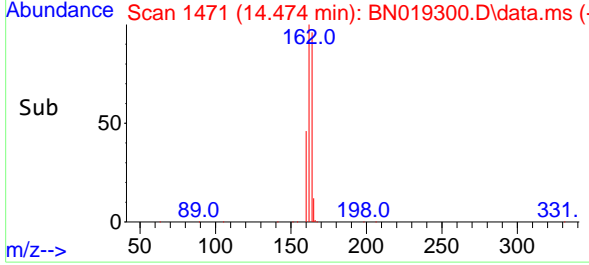


Tgt Ion:164 Resp: 830
 Ion Ratio Lower Upper
 164 100
 162 103.8 85.2 127.8
 160 48.3 41.5 62.3

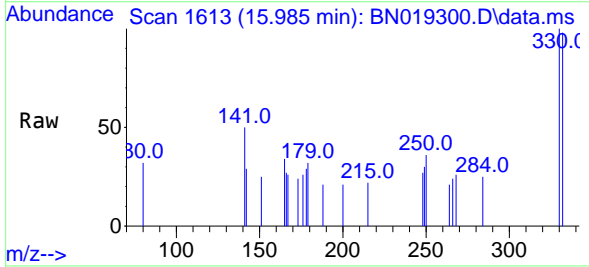
Manual Integrations

APPROVED

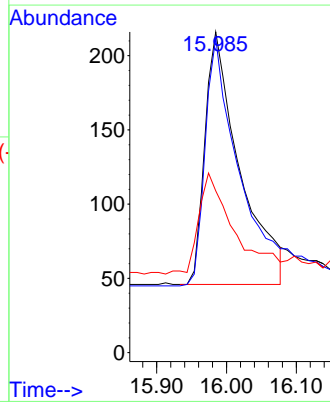
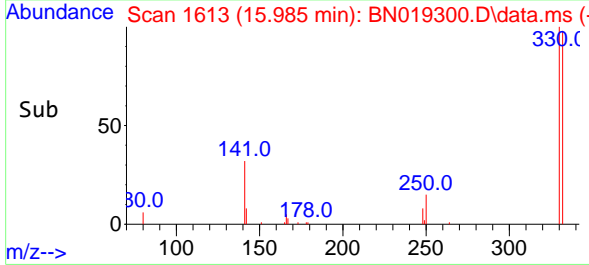
Reviewed By :Christian Giraldo 04/04/2022
 Supervised By :Jagrut Upadhyay 04/04/2022

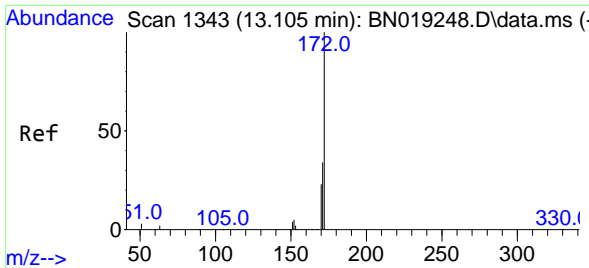


#14
 2,4,6-Tribromophenol
 Concen: 0.151 ng
 RT: 15.985 min Scan# 1613
 Delta R.T. 0.021 min
 Lab File: BN019300.D
 Acq: 01 Apr 2022 23:55



Tgt Ion:330 Resp: 588
 Ion Ratio Lower Upper
 330 100
 332 95.4 76.8 115.2
 141 40.6 32.2 48.2





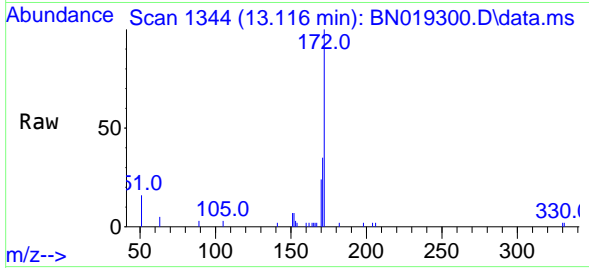
#15
 2-Fluorobiphenyl
 Concen: 0.236 ng
 RT: 13.116 min Scan# 11
 Delta R.T. 0.011 min
 Lab File: BN019300.D
 Acq: 01 Apr 2022 23:55

Instrument :

BNA_N

ClientSampleId :

PB143805BL

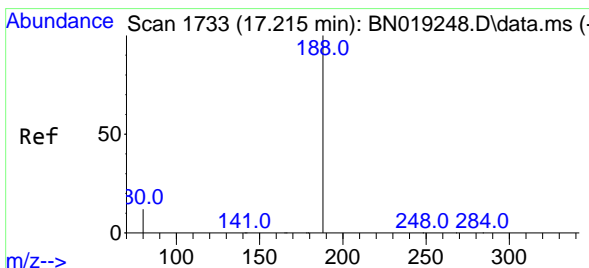
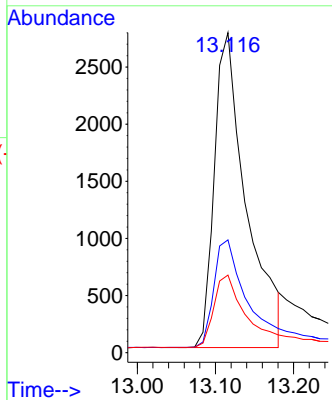
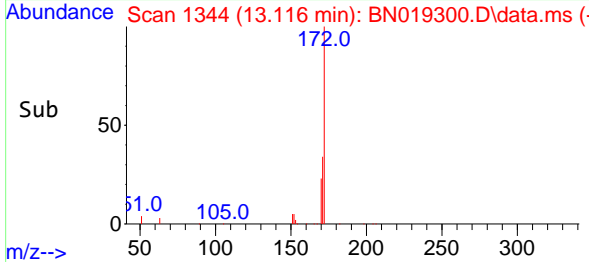


Tgt Ion:172 Resp: 786
 Ion Ratio Lower Upper
 172 100
 171 35.2 28.2 42.2
 170 24.3 18.7 28.1

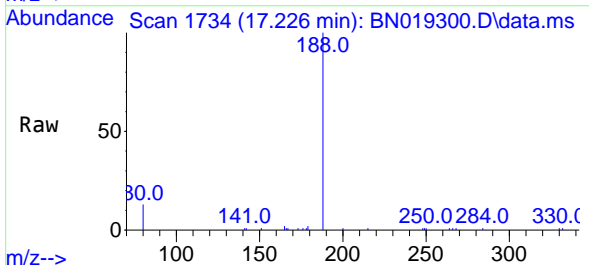
Manual Integrations

APPROVED

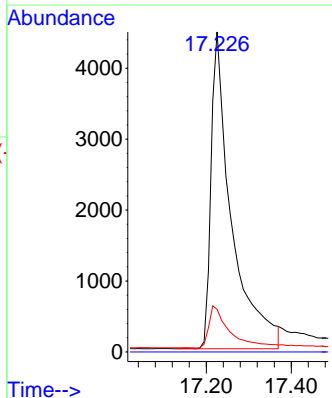
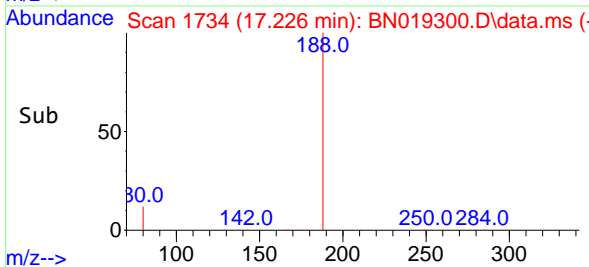
Reviewed By :Christian Giraldo 04/04/2022
 Supervised By :Jagrut Upadhyay 04/04/2022

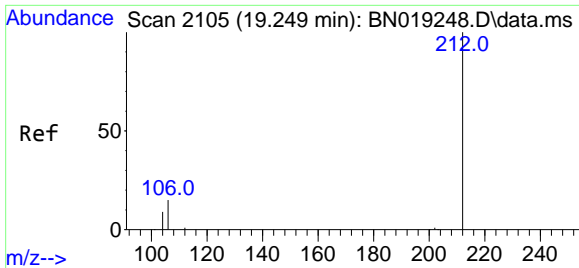


#19
 Phenanthrene-d10
 Concen: 0.400 ng
 RT: 17.226 min Scan# 1734
 Delta R.T. 0.011 min
 Lab File: BN019300.D
 Acq: 01 Apr 2022 23:55



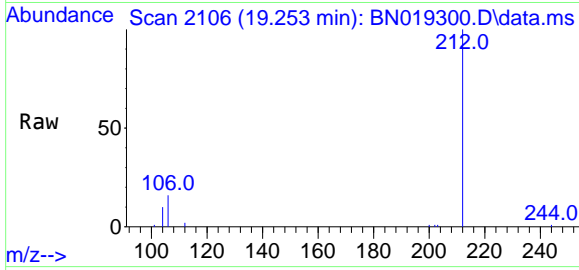
Tgt Ion:188 Resp: 14866
 Ion Ratio Lower Upper
 188 100
 94 0.0 0.0 0.0
 80 13.4 11.8 17.8





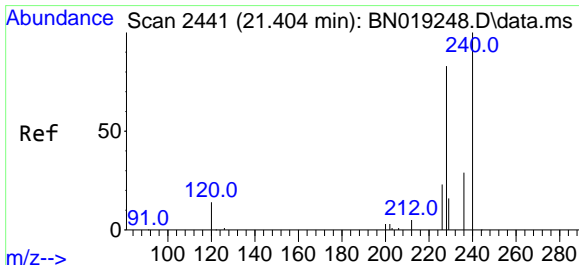
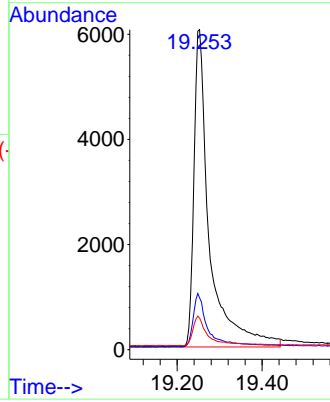
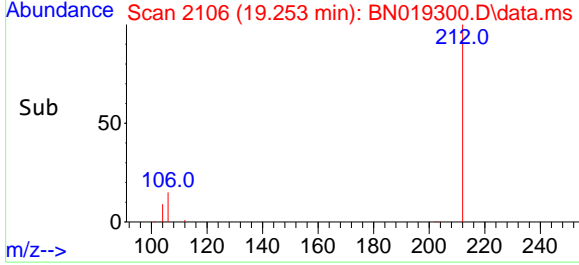
#27
 Fluoranthene-d10
 Concen: 0.344 ng
 RT: 19.253 min Scan# 2105
 Delta R.T. 0.004 min
 Lab File: BN019300.D
 Acq: 01 Apr 2022 23:55

Instrument : BNA_N
 ClientSampleId : PB143805BL

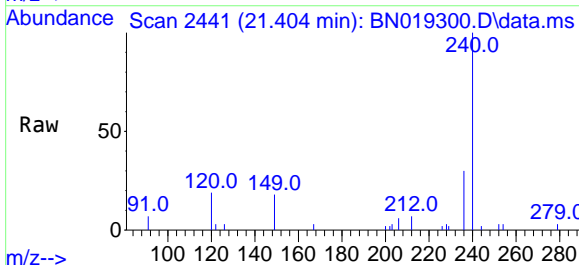


Tgt Ion:212 Resp: 15380
 Ion Ratio Lower Upper
 212 100
 106 15.8 12.7 19.1
 104 8.7 7.1 10.7

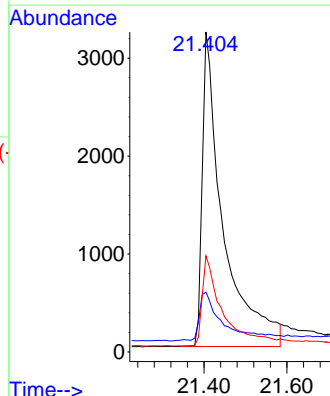
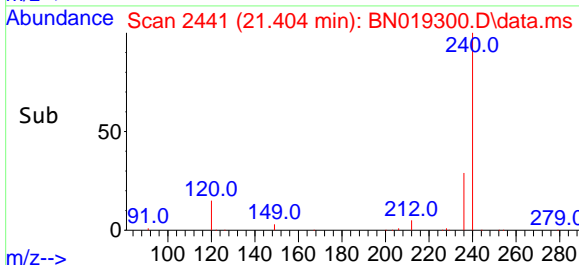
Manual Integrations
APPROVED
 Reviewed By :Christian Giraldo 04/04/2022
 Supervised By :Jagrut Upadhyay 04/04/2022

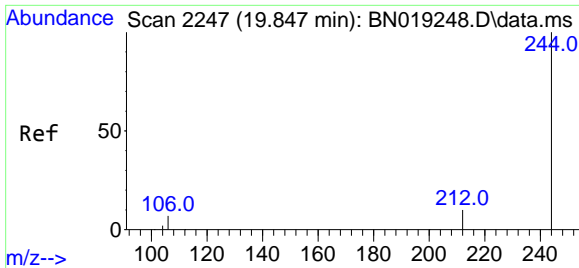


#29
 Chrysene-d12
 Concen: 0.400 ng
 RT: 21.404 min Scan# 2441
 Delta R.T. 0.000 min
 Lab File: BN019300.D
 Acq: 01 Apr 2022 23:55



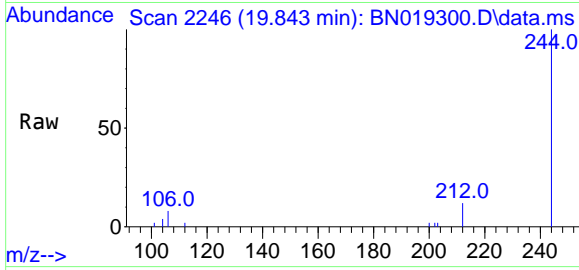
Tgt Ion:240 Resp: 11199
 Ion Ratio Lower Upper
 240 100
 120 18.7 8.5 12.7#
 236 30.0 22.4 33.6





#31
 Terphenyl-d14
 Concen: 0.337 ng
 RT: 19.843 min Scan# 21
 Delta R.T. -0.004 min
 Lab File: BN019300.D
 Acq: 01 Apr 2022 23:55

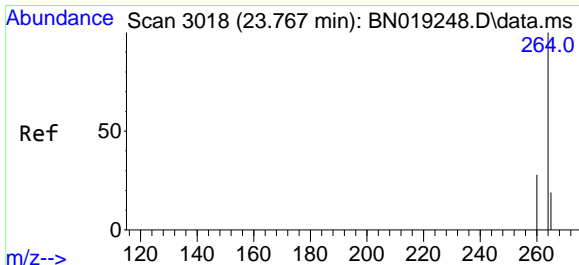
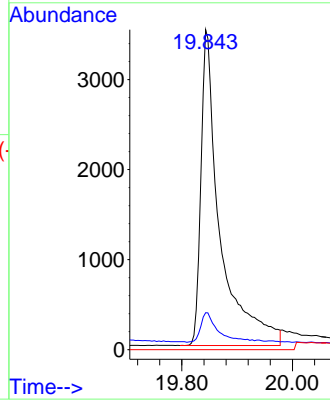
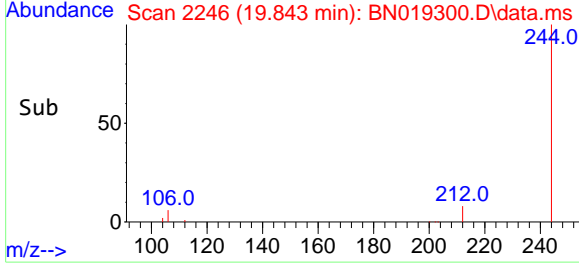
Instrument :
 BNA_N
 ClientSampleId :
 PB143805BL



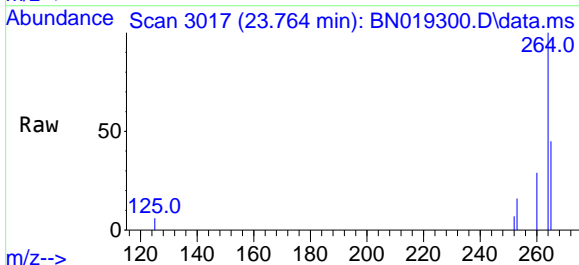
Tgt Ion:244 Resp: 840

Ion	Ratio	Lower	Upper
244	100		
212	11.5	8.2	12.4
122	0.0	0.0	0.0

Manual Integrations
APPROVED
 Reviewed By :Christian Giraldo 04/04/2022
 Supervised By :Jagrut Upadhyay 04/04/2022



#35
 Perylene-d12
 Concen: 0.400 ng
 RT: 23.764 min Scan# 3017
 Delta R.T. -0.003 min
 Lab File: BN019300.D
 Acq: 01 Apr 2022 23:55



Tgt Ion:264 Resp: 9200

Ion	Ratio	Lower	Upper
264	100		
260	28.5	22.4	33.6
265	45.0	25.3	37.9#

