

Data Path : Z:\svoasrv\HPCHEM1\BNA\_N\Data\BN051822\  
 Data File : BN019845.D  
 Acq On : 19 May 2022 00:07  
 Operator : CG/JU  
 Sample : N2766-11  
 Misc :  
 ALS Vial : 23 Sample Multiplier: 1

Instrument :  
 BNA\_N  
 ClientSampleId :  
 EW4G1

Manual Integrations  
 APPROVED

Reviewed By :Jagrut Upadhyay 05/19/2022  
 Supervised By :mohammad ahmed 05/25/2022

Quant Time: May 19 05:38:21 2022  
 Quant Method : Z:\SVOASRV\HPCHEM1\BNA\_N\METHODS\SFAM-EPA-SIM-BN042922.M  
 Quant Title : ASP BNA STANDARDS FOR 5 POINT CALIBRATION  
 QLast Update : Tue May 17 01:41:05 2022  
 Response via : Initial Calibration

Compound	R.T.	QIon	Response	Conc	Units	Dev(Min)
Internal Standards						
1) 1,4-Dichlorobenzene-d4	7.855	152	5689	0.400	ng/ul	0.00
4) Naphthalene-d8	10.639	136	19729	0.400	ng/ul #	0.00
9) Acenaphthene-d10	14.474	164	12390	0.400	ng/ul	0.00
13) Phenanthrene-d10	17.213	188	25929	0.400	ng/ul	0.00
17) Chrysene-d12	21.397	240	19787	0.400	ng/ul	0.00
23) Perylene-d12	23.735	264	15570	0.400	ng/ul #	0.00
System Monitoring Compounds						
3) 1,4-Dioxane-d8	3.319	96	13950m	2.072	ng/ul	0.00
6) 2-Methylnaphthalene-d10	12.229	152	4826	0.162	ng/ul	0.00
18) Fluoranthene-d10	19.239	212	13019	0.208	ng/ul	0.00
Target Compounds						
15) Phenanthrene	17.255	178	10232	0.107	ng/ul#	94
20) Pyrene	19.634	202	4277	0.047	ng/ul#	69
22) Chrysene	21.432	228	7961m	0.091	ng/ul	

(#) = qualifier out of range (m) = manual integration (+) = signals summed

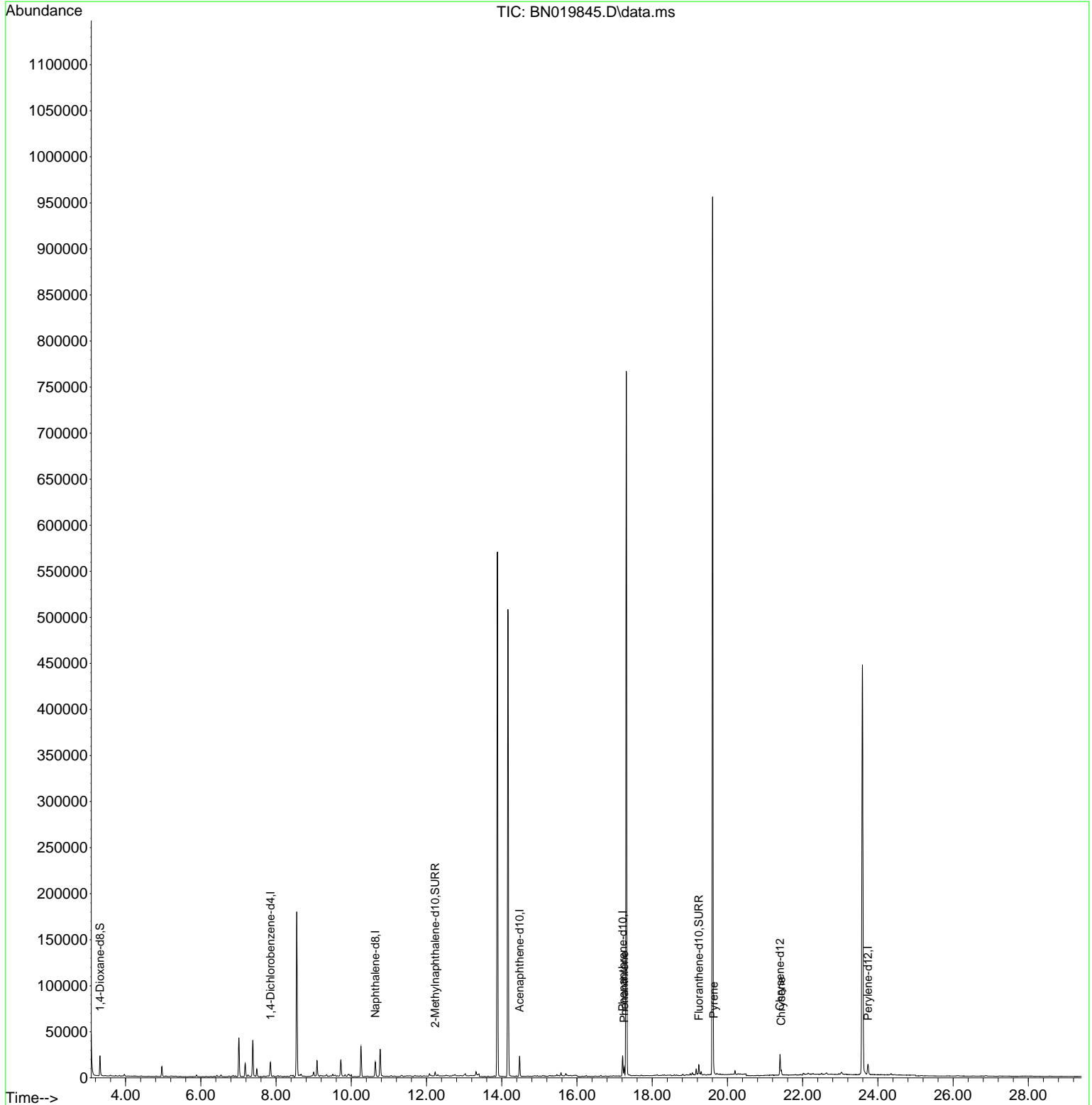
Data Path : Z:\svoasrv\HPCHEM1\BNA\_N\Data\BN051822\  
 Data File : BN019845.D  
 Acq On : 19 May 2022 00:07  
 Operator : CG/JU  
 Sample : N2766-11  
 Misc :  
 ALS Vial : 23 Sample Multiplier: 1

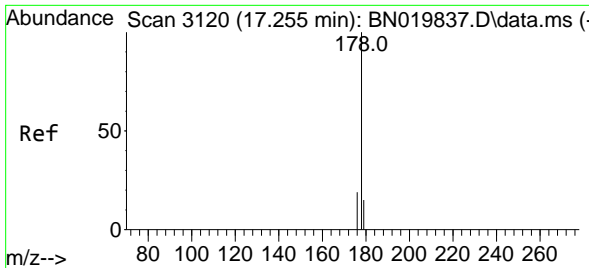
Instrument :  
 BNA\_N  
 ClientSampleId :  
 EW4G1

Manual Integrations  
 APPROVED

Reviewed By :Jagrut Upadhyay 05/19/2022  
 Supervised By :mohammad ahmed 05/25/2022

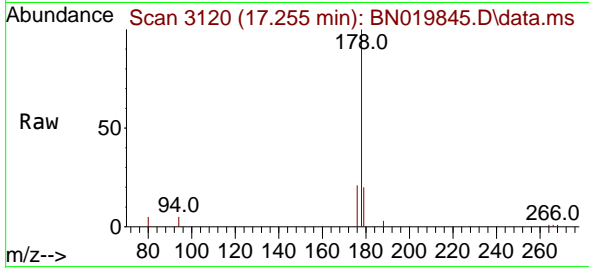
Quant Time: May 19 05:38:21 2022  
 Quant Method : Z:\SVOASRV\HPCHEM1\BNA\_N\METHODS\SFAM-EPA-SIM-BN042922.M  
 Quant Title : ASP BNA STANDARDS FOR 5 POINT CALIBRATION  
 QLast Update : Tue May 17 01:41:05 2022  
 Response via : Initial Calibration





#15  
 Phenanthrene  
 Concen: 0.107 ng/u1  
 RT: 17.255 min Scan# 3120  
 Delta R.T. 0.000 min  
 Lab File: BN019845.D  
 Acq: 19 May 2022 00:07

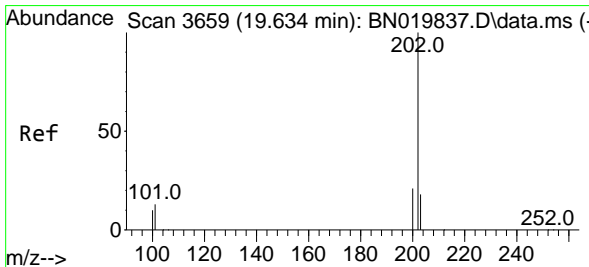
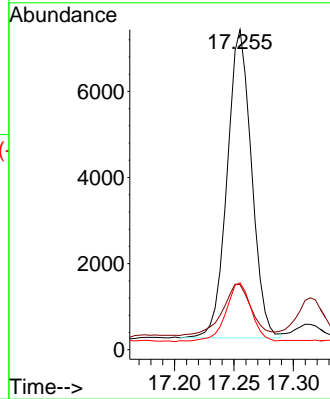
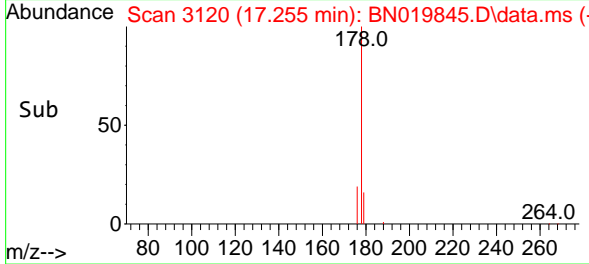
Instrument :  
 BNA\_N  
 ClientSampleId :  
 EW4G1



Tgt Ion:178 Resp: 1023  
 Ion Ratio Lower Upper  
 178 100  
 179 20.3 12.9 19.3#  
 176 20.9 15.5 23.3#

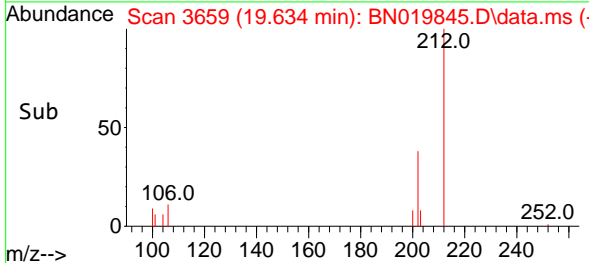
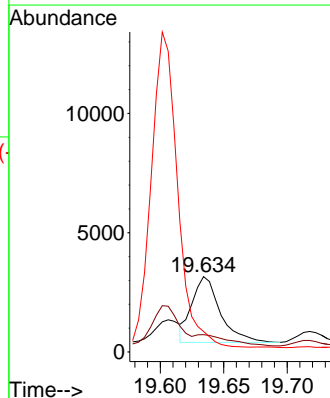
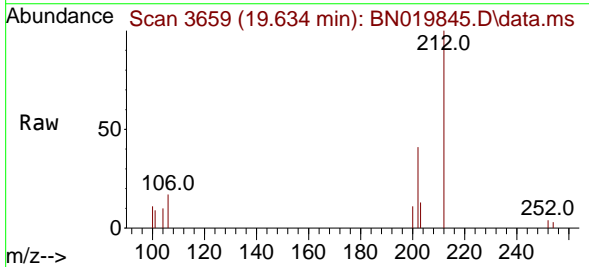
Manual Integrations  
 APPROVED

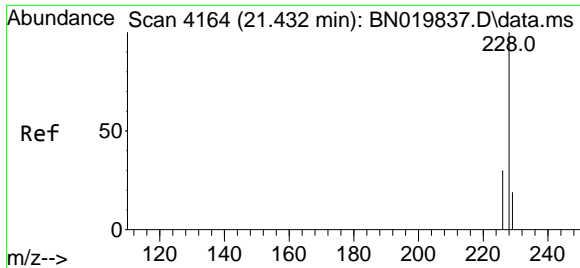
Reviewed By :Jagrut Upadhyay 05/19/2022  
 Supervised By :mohammad ahmed 05/25/2022



#20  
 Pyrene  
 Concen: 0.047 ng/u1  
 RT: 19.634 min Scan# 3659  
 Delta R.T. 0.000 min  
 Lab File: BN019845.D  
 Acq: 19 May 2022 00:07

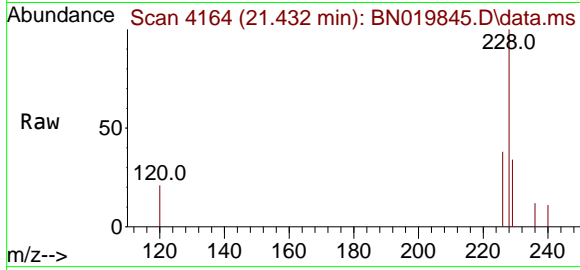
Tgt Ion:202 Resp: 4277  
 Ion Ratio Lower Upper  
 202 100  
 101 23.0 11.4 17.0#  
 100 27.2 9.0 13.4#





#22  
 Chrysene  
 Concen: 0.091 ng/ul m  
 RT: 21.432 min Scan# 41  
 Delta R.T. -0.009 min  
 Lab File: BN019845.D  
 Acq: 19 May 2022 00:07

Instrument :  
 BNA\_N  
 ClientSampleId :  
 EW4G1



Tgt Ion:228 Resp: 796

Ion	Ratio	Lower	Upper
228	100		
226	38.5	24.2	36.2
229	33.8	16.0	24.0

Manual Integrations  
**APPROVED**  
 Reviewed By :Jagrut Upadhyay 05/19/2022  
 Supervised By :mohammad ahmed 05/25/2022

