

Data Path : Z:\svoasrv\HPCHEM1\BNA_N\Data\BN060722\
 Data File : BN020041.D
 Acq On : 07 Jun 2022 22:54
 Operator : CG/JU
 Sample : N3171-04MSD
 Misc :
 ALS Vial : 17 Sample Multiplier: 1

Instrument :
 BNA_N
 ClientSampleId :
 DBTY9MSD

Manual Integrations
 APPROVED

Reviewed By :Jagrut Upadhyay 06/08/2022
 Supervised By :mohammad ahmed 06/09/2022

Quant Time: Jun 07 23:39:43 2022
 Quant Method : Z:\svoasrv\HPCHEM1\BNA_N\Methods\SFAM-EPA-BN060622.M
 Quant Title : SVOA CALIBRATION
 QLast Update : Mon Jun 06 15:14:59 2022
 Response via : Initial Calibration

Compound	R.T.	QIon	Response	Conc	Units	Dev(Min)
Internal Standards						
1) 1,4-Dichlorobenzene-d4	7.822	152	127673	20.000	ng/u1	0.00
20) Naphthalene-d8	10.610	136	604576	20.000	ng/u1	0.00
38) Acenaphthene-d10	14.451	164	394567	20.000	ng/u1	0.00
64) Phenanthrene-d10	17.192	188	823986	20.000	ng/u1	0.00
79) Chrysene-d12	21.380	240	778374	20.000	ng/u1	0.00
88) Perylene-d12	23.710	264	796917	20.000	ng/u1	0.00
System Monitoring Compounds						
3) 1,4-Dioxane-d8	3.287	96	8707	2.954	ng/uL	0.00
4) Pyridine-d5	3.693	84	53590	6.651	ng/u1	0.00
7) Phenol-d5	6.987	99	182683	17.292	ng/u1	0.00
9) Bis-(2-Chloroethyl)eth...	7.152	67	113463	17.190	ng/u1	0.00
11) 2-Chlorophenol-d4	7.352	132	153282	17.857	ng/u1	0.00
15) 4-Methylphenol-d8	8.528	113	153487	16.793	ng/u1	0.00
21) Nitrobenzene-d5	8.975	128	79278	17.236	ng/u1	0.00
24) 2-Nitrophenol-d4	9.693	143	85433	17.502	ng/u1	0.00
28) 2,4-Dichlorophenol-d3	10.234	165	153744	18.042	ng/u1	0.00
31) 4-Chloroaniline-d4	10.746	131	194778	14.115	ng/u1	0.00
46) Dimethylphthalate-d6	13.863	166	517962	18.042	ng/u1	0.00
49) Acenaphthylene-d8	14.146	160	600367	18.032	ng/u1	0.00
54) 4-Nitrophenol-d4	14.640	143	83642	14.539	ng/u1	0.00
60) Fluorene-d10	15.440	176	427521	17.996	ng/u1	0.00
65) 4,6-Dinitro-2-methylph...	15.557	200	65136	13.647	ng/u1	0.00
73) Anthracene-d10	17.292	188	674267	18.750	ng/u1	0.00
81) Pyrene-d10	19.586	212	779534	18.474	ng/u1	0.00
92) Benzo(a)pyrene-d12	23.557	264	676796	17.358	ng/u1	0.00
Target Compounds						
2) 1,4-Dioxane	3.317	88	23484	7.547	ng/uL#	93
5) Pyridine	3.711	79	77955	9.229	ng/u1	94
6) Benzaldehyde	6.958	77	136721	27.466	ng/u1	89
8) Phenol	7.016	94	244258	21.713	ng/u1	100
10) Bis(2-Chloroethyl)ether	7.246	93	190408	21.625	ng/u1	97
12) 2-Chlorophenol	7.387	128	193134	21.525	ng/u1	98
13) 2-Methylphenol	8.263	108	177877	20.568	ng/u1	98
14) 2,2'-oxybis(1-Chloropr...	8.358	45	291178	21.089	ng/u1	97
16) Acetophenone	8.640	105	328419	23.627	ng/u1	97
17) N-Nitroso-di-n-propyla...	8.628	70	156578	22.051	ng/u1	94
18) 4-Methylphenol	8.593	108	203849	21.356	ng/u1	97
19) Hexachloroethane	8.905	117	72953	20.207	ng/u1	89
22) Nitrobenzene	9.016	77	225811	21.174	ng/u1	93
23) Isophorone	9.540	82	446575	21.208	ng/u1	98
25) 2-Nitrophenol	9.728	139	116197	21.543	ng/u1	99
26) 2,4-Dimethylphenol	9.793	107	139631	12.495	ng/u1	98
27) Bis(2-Chloroethoxy)met...	10.028	93	266822	20.707	ng/u1	98
29) 2,4-Dichlorophenol	10.257	162	189429	21.490	ng/u1	98
30) Naphthalene	10.663	128	658453	21.015	ng/u1	99
32) 4-Chloroaniline	10.769	127	281515	20.396	ng/u1	99
33) Hexachlorobutadiene	10.957	225	106260	20.997	ng/u1	97
34) Caprolactam	11.516	113	74852	21.745	ng/u1	96
35) 4-Chloro-3-methylphenol	11.899	107	232129	22.302	ng/u1	98
36) 2-Methylnaphthalene	12.275	142	461587	21.790	ng/u1	99

Data Path : Z:\svoasrv\HPCHEM1\BNA_N\Data\BN060722\
 Data File : BN020041.D
 Acq On : 07 Jun 2022 22:54
 Operator : CG/JU
 Sample : N3171-04MSD
 Misc :
 ALS Vial : 17 Sample Multiplier: 1

Instrument :
 BNA_N
 ClientSampleId :
 DBTY9MSD

Manual Integrations
 APPROVED

Reviewed By :Jagrut Upadhyay 06/08/2022
 Supervised By :mohammad ahmed 06/09/2022

Quant Time: Jun 07 23:39:43 2022
 Quant Method : Z:\svoasrv\HPCHEM1\BNA_N\Methods\SFAM-EPA-BN060622.M
 Quant Title : SVOA CALIBRATION
 QLast Update : Mon Jun 06 15:14:59 2022
 Response via : Initial Calibration

Compound	R.T.	QIon	Response	Conc	Units	Dev(Min)
37) 1-Methylnaphthalene	12.493	142	481847	22.290	ng/ul	97
39) 1,2,4,5-Tetrachloroben...	12.646	216	218004	21.664	ng/ul	99
40) Hexachlorocyclopentadiene	12.634	237	79312	12.956	ng/ul	98
41) 2,4,6-Trichlorophenol	12.887	196	153123	22.067	ng/ul	92
42) 2,4,5-Trichlorophenol	12.951	196	167590	21.808	ng/ul	95
43) 1,1'-Biphenyl	13.287	154	630087	21.566	ng/ul	99
44) 2-Chloronaphthalene	13.328	162	476887	21.516	ng/ul	98
45) 2-Nitroaniline	13.522	65	158876	23.041	ng/ul	96
47) Dimethylphthalate	13.910	163	635465	21.987	ng/ul	99
48) 2,6-Dinitrotoluene	14.022	165	130840	23.154	ng/ul	97
50) Acenaphthylene	14.169	152	806597	21.882	ng/ul	100
51) 3-Nitroaniline	14.351	138	143593	24.037	ng/ul	97
52) Acenaphthene	14.516	153	536159	22.268	ng/ul	98
53) 2,4-Dinitrophenol	14.557	184	69000	19.072	ng/ul	96
55) 4-Nitrophenol	14.657	109	112558	22.921	ng/ul	96
56) Dibenzofuran	14.851	168	754222	22.234	ng/ul	98
57) 2,4-Dinitrotoluene	14.810	165	201087	24.034	ng/ul	100
58) 2,3,4,6-Tetrachlorophenol	15.075	232	134878	22.358	ng/ul#	88
59) Diethylphthalate	15.275	149	672873	22.613	ng/ul	99
61) Fluorene	15.498	166	599970	22.730	ng/ul	99
62) 4-Chlorophenyl-phenyle...	15.493	204	271823	22.361	ng/ul	94
63) 4-Nitroaniline	15.510	138	148813	26.658	ng/ul	98
66) 4,6-Dinitro-2-methylph...	15.575	198	107406	22.195	ng/ul	95
67) N-Nitrosodiphenylamine	15.704	169	544675	23.058	ng/ul	98
68) 4-Bromophenyl-phenylether	16.387	248	160742	22.401	ng/ul	92
69) Hexachlorobenzene	16.504	284	177089	21.469	ng/ul#	89
70) Atrazine	16.657	200	198846	24.126	ng/ul	98
71) Pentachlorophenol	16.845	266	96212	18.728	ng/ul	99
72) Phenanthrene	17.234	178	1051092	24.172	ng/ul	100
74) Anthracene	17.322	178	1003341	22.947	ng/ul	98
75) 1,2,3,4-Tetrachloroben...	13.251	216	227091	20.581	ng/ul	96
76) Pentachlorobenzene	14.775	250	217974	22.352	ng/ul	95
77) Carbazole	17.592	167	952439	23.944	ng/ul	98
78) Di-n-butylphthalate	18.163	149	1236895	25.076	ng/ul	99
80) Fluoranthene	19.251	202	1290140	25.315	ng/ul	98
82) Pyrene	19.616	202	1238861	23.694	ng/ul	95
83) Butylbenzylphthalate	20.516	149	583378	24.792	ng/ul	96
84) 3,3'-Dichlorobenzidine	21.292	252	332562	22.370	ng/ul#	95
85) Benzo(a)anthracene	21.363	228	1182528	24.059	ng/ul	98
86) Bis(2-ethylhexyl)phtha...	21.304	149	850342	25.612	ng/ul	99
87) Chrysene	21.416	228	1174441	24.423	ng/ul	99
89) Di-n-octyl phthalate	22.204	149	1523012	23.481	ng/ul	100
90) Benzo(b)fluoranthene	23.004	252	1266310m	25.318	ng/ul	
91) Benzo(k)fluoranthene	23.051	252	1170526	24.585	ng/ul	98
93) Benzo(a)pyrene	23.610	252	1040414	21.490	ng/ul	96
94) Indeno(1,2,3-cd)pyrene	26.104	276	1124742	22.580	ng/ul#	92
95) Dibenzo(a,h)anthracene	26.115	278	1008980	23.715	ng/ul	97
96) Benzo(g,h,i)perylene	26.827	276	145459	3.458	ng/ul	95

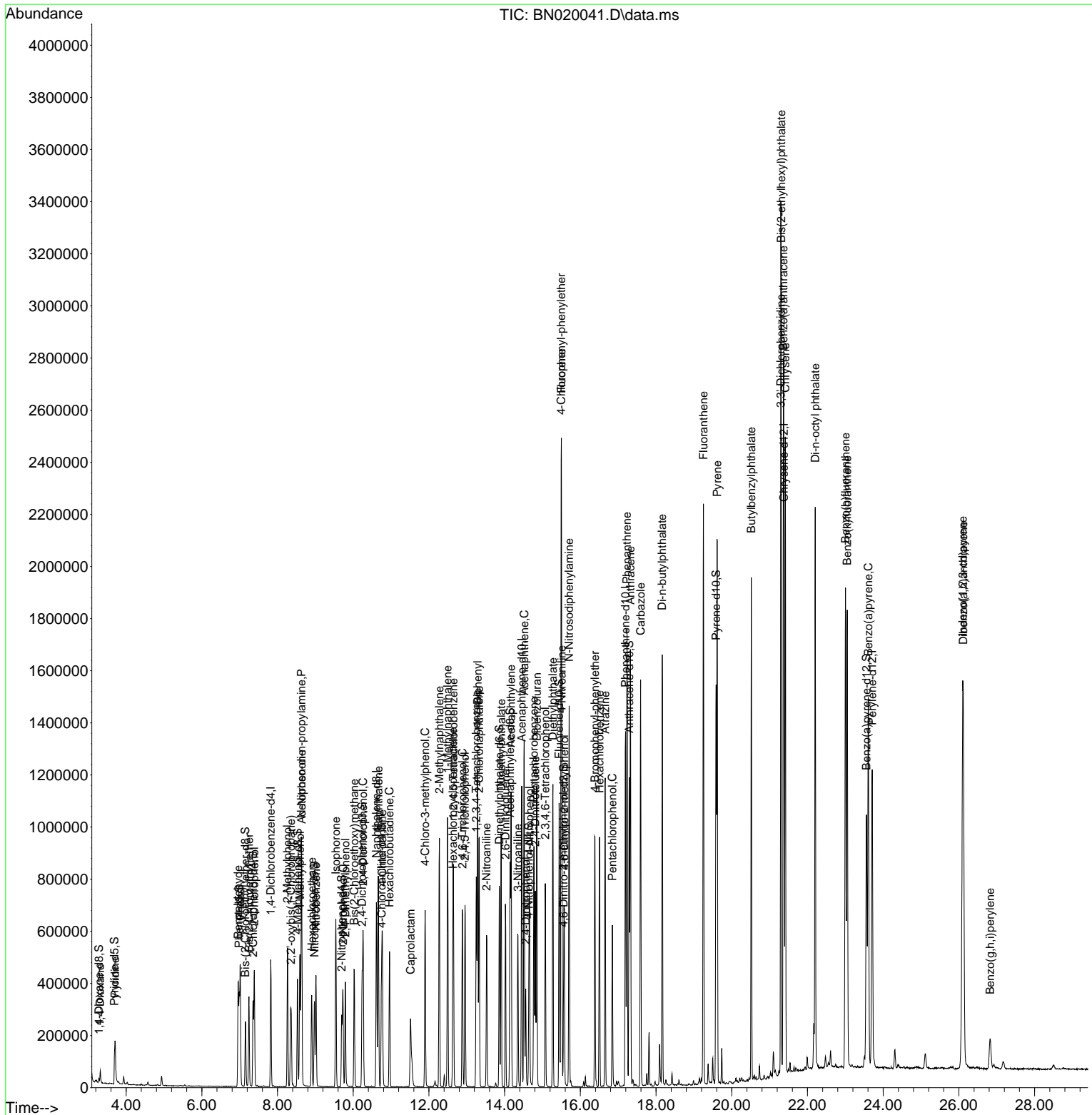
(#) = qualifier out of range (m) = manual integration (+) = signals summed

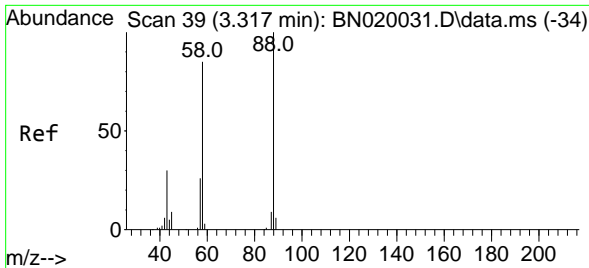
Data Path : Z:\svoasrv\HPCHEM1\BNA_N\Data\BN060722\
 Data File : BN020041.D
 Acq On : 07 Jun 2022 22:54
 Operator : CG/JU
 Sample : N3171-04MSD
 Misc :
 ALS Vial : 17 Sample Multiplier: 1

Instrument :
 BNA_N
ClientSampleId :
 DBTY9MSD

Quant Time: Jun 07 23:39:43 2022
 Quant Method : Z:\svoasrv\HPCHEM1\BNA_N\Methods\SFAM-EPA-BN060622.M
 Quant Title : SVOA CALIBRATION
 QLast Update : Mon Jun 06 15:14:59 2022
 Response via : Initial Calibration

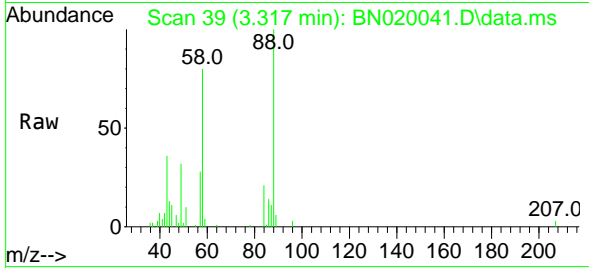
Manual Integrations
APPROVED
 Reviewed By :Jagrut Upadhyay 06/08/2022
 Supervised By :mohammad ahmed 06/09/2022





#2
 1,4-Dioxane
 Concen: 7.547 ng/uL
 RT: 3.317 min Scan# 39
 Delta R.T. 0.001 min
 Lab File: BN020041.D
 Acq: 07 Jun 2022 22:54

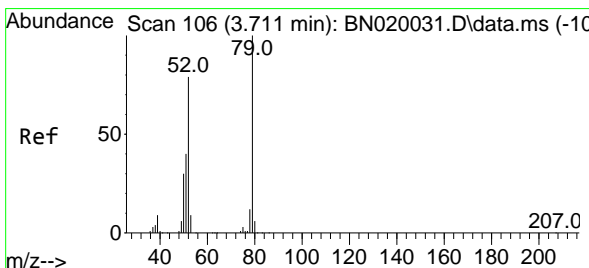
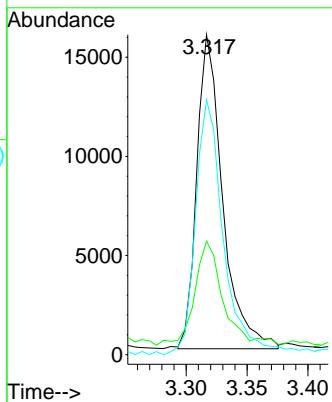
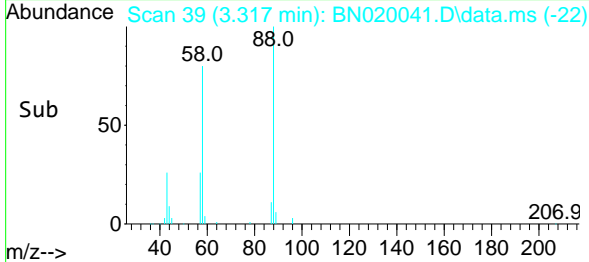
Instrument :
 BNA_N
 ClientSampleId :
 DBTY9MSD



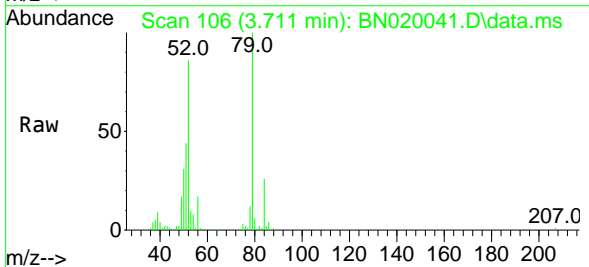
Tgt Ion: 88 Resp: 23484
 Ion Ratio Lower Upper
 88 100
 43 35.5 22.4 33.6
 58 79.6 61.0 91.4

Manual Integrations
 APPROVED

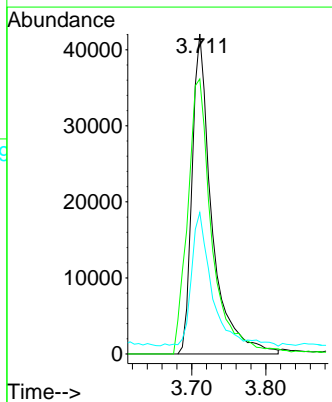
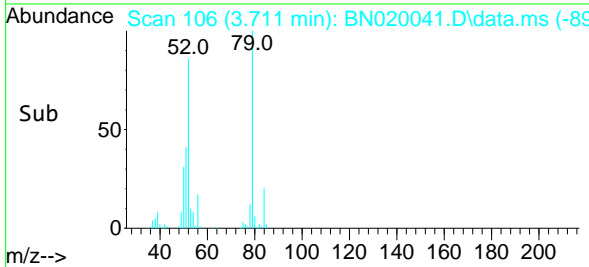
Reviewed By :Jagrut Upadhyay 06/08/2022
 Supervised By :mohammad ahmed 06/09/2022

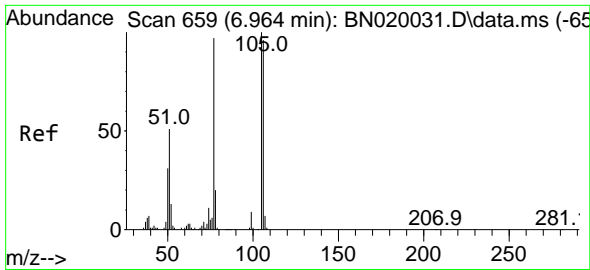


#5
 Pyridine
 Concen: 9.229 ng/uL
 RT: 3.711 min Scan# 106
 Delta R.T. 0.000 min
 Lab File: BN020041.D
 Acq: 07 Jun 2022 22:54



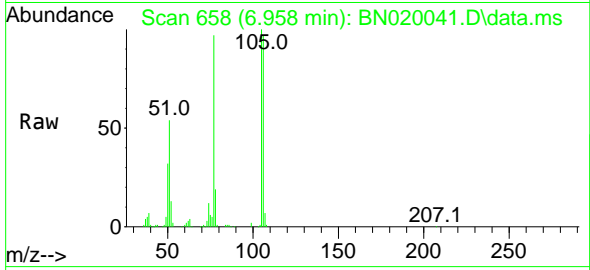
Tgt Ion: 79 Resp: 77955
 Ion Ratio Lower Upper
 79 100
 52 86.0 65.0 97.4
 51 44.2 31.6 47.4





#6
Benzaldehyde
Concen: 27.466 ng/u1
RT: 6.958 min Scan# 658
Delta R.T. -0.006 min
Lab File: BN020041.D
Acq: 07 Jun 2022 22:54

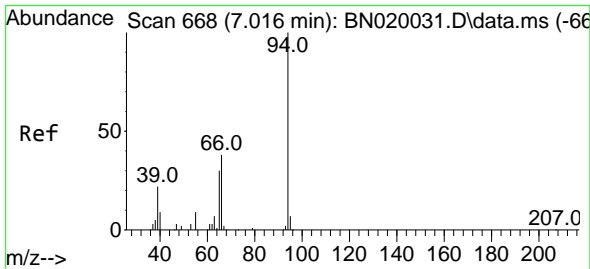
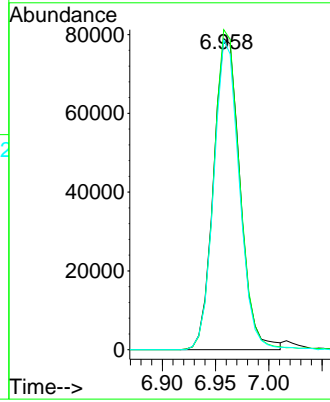
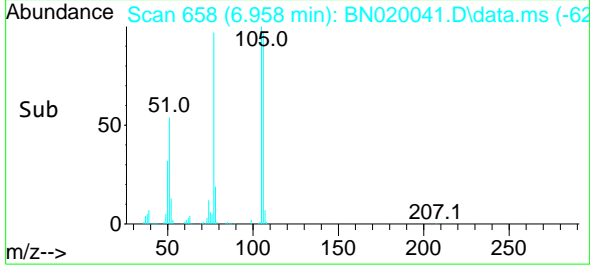
Instrument :
BNA_N
ClientSampleId :
DBTY9MSD



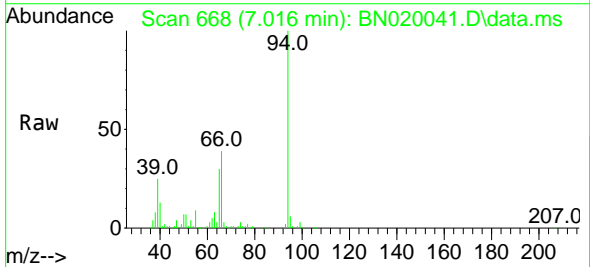
Tgt Ion: 77 Resp: 13672
Ion Ratio Lower Upper
77 100
105 102.9 74.7 112.1
106 99.6 70.2 105.4

Manual Integrations
APPROVED

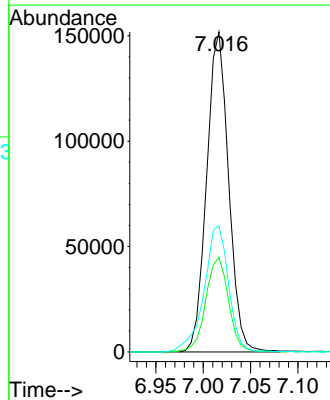
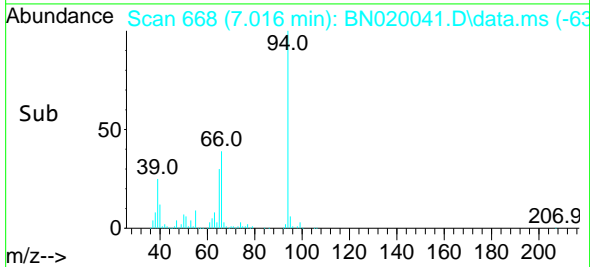
Reviewed By :Jagrut Upadhyay 06/08/2022
Supervised By :mohammad ahmed 06/09/2022

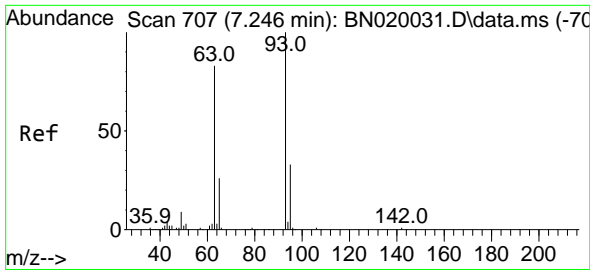


#8
Phenol
Concen: 21.713 ng/u1
RT: 7.016 min Scan# 668
Delta R.T. 0.000 min
Lab File: BN020041.D
Acq: 07 Jun 2022 22:54



Tgt Ion: 94 Resp: 244258
Ion Ratio Lower Upper
94 100
65 29.6 23.6 35.4
66 39.4 31.2 46.8





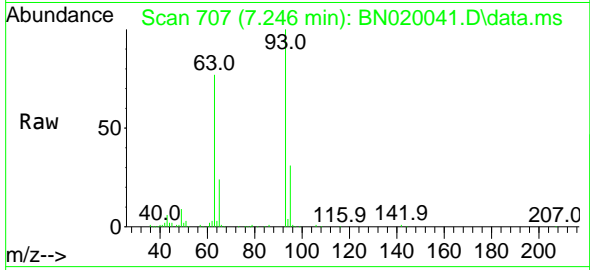
#10
 Bis(2-Chloroethyl)ether
 Concen: 21.625 ng/ul
 RT: 7.246 min Scan# 707
 Delta R.T. 0.000 min
 Lab File: BN020041.D
 Acq: 07 Jun 2022 22:54

Instrument :

BNA_N

ClientSampleId :

DBTY9MSD

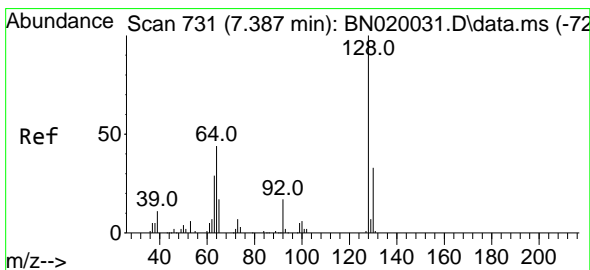
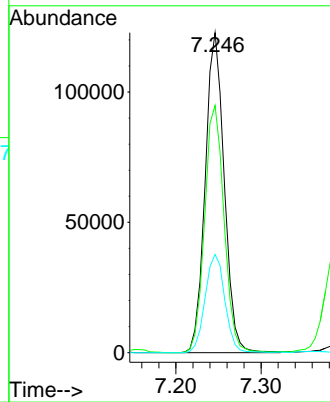
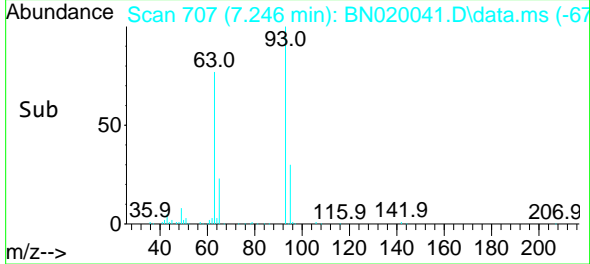


Tgt Ion: 93 Resp: 190408
 Ion Ratio Lower Upper
 93 100
 63 77.2 63.4 95.0
 95 30.7 26.2 39.2

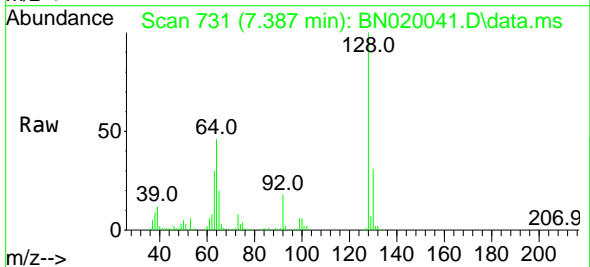
Manual Integrations

APPROVED

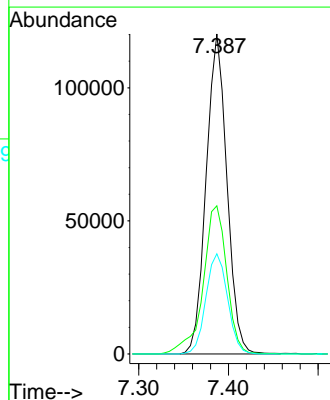
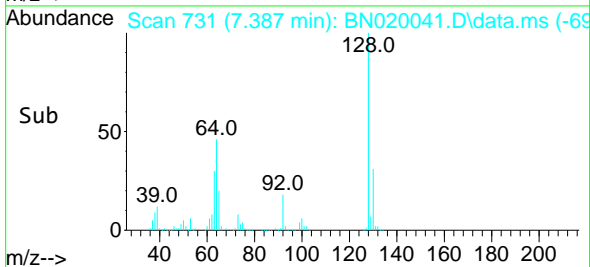
Reviewed By :Jagrut Upadhyay 06/08/2022
 Supervised By :mohammad ahmed 06/09/2022

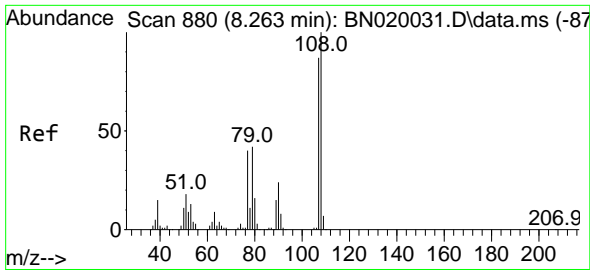


#12
 2-Chlorophenol
 Concen: 21.525 ng/ul
 RT: 7.387 min Scan# 731
 Delta R.T. 0.000 min
 Lab File: BN020041.D
 Acq: 07 Jun 2022 22:54



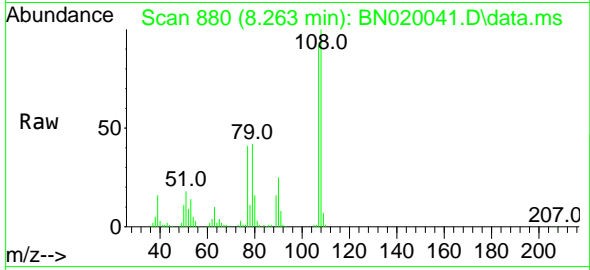
Tgt Ion:128 Resp: 193134
 Ion Ratio Lower Upper
 128 100
 64 46.3 38.6 57.8
 130 31.3 25.0 37.4





#13
 2-Methylphenol
 Concen: 20.568 ng/ul
 RT: 8.263 min Scan# 880
 Delta R.T. 0.000 min
 Lab File: BN020041.D
 Acq: 07 Jun 2022 22:54

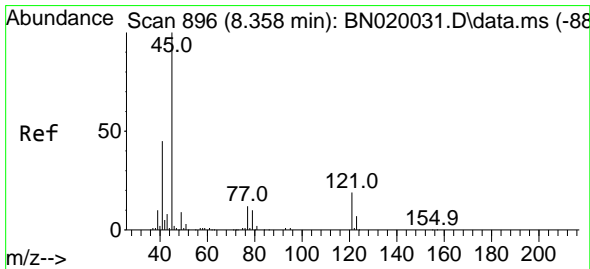
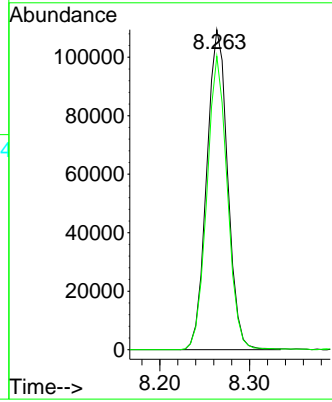
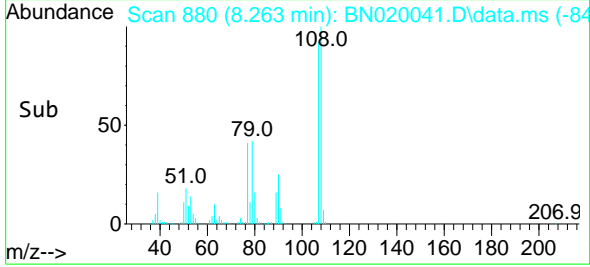
Instrument :
 BNA_N
 ClientSampleId :
 DBTY9MSD



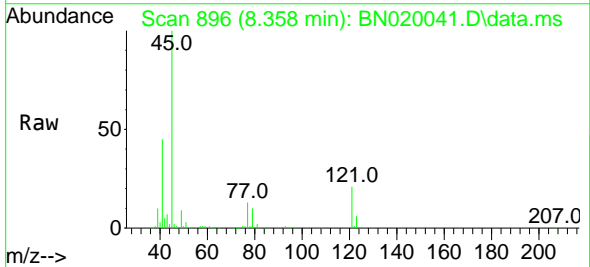
Tgt Ion: 108 Resp: 17787
 Ion Ratio Lower Upper
 108 100
 107 91.7 71.5 107.3

Manual Integrations
APPROVED

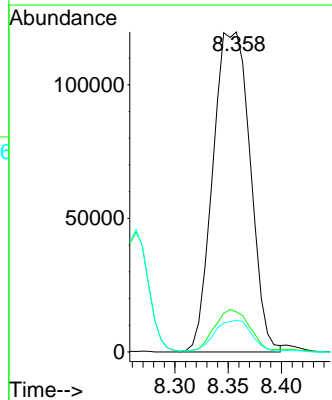
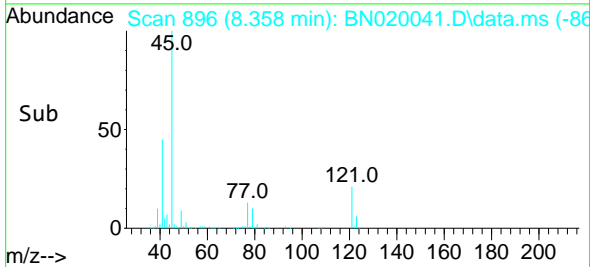
Reviewed By :Jagrut Upadhyay 06/08/2022
 Supervised By :mohammad ahmed 06/09/2022

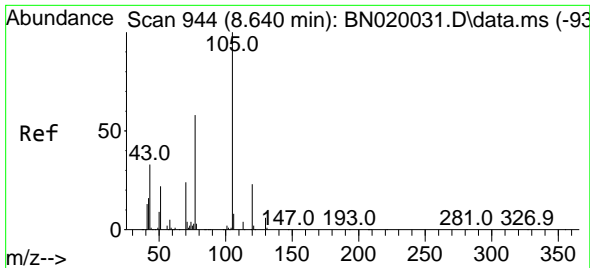


#14
 2,2'-oxybis(1-Chloropropane)
 Concen: 21.089 ng/ul
 RT: 8.358 min Scan# 896
 Delta R.T. 0.000 min
 Lab File: BN020041.D
 Acq: 07 Jun 2022 22:54



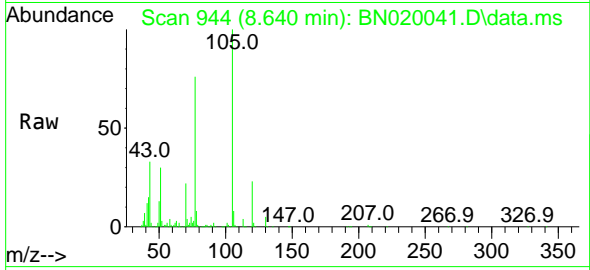
Tgt Ion: 45 Resp: 291178
 Ion Ratio Lower Upper
 45 100
 77 12.5 10.9 16.3
 79 9.9 8.6 13.0





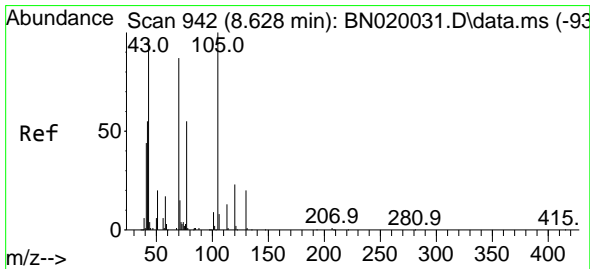
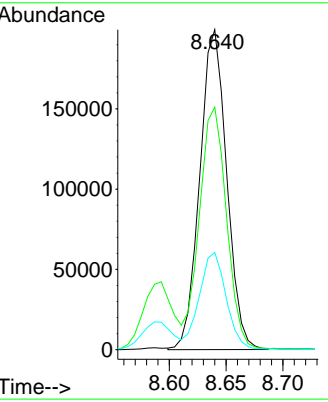
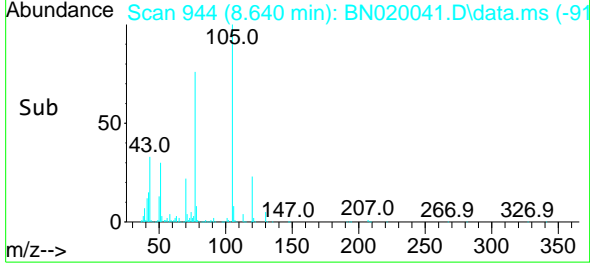
#16
 Acetophenone
 Concen: 23.627 ng/u1
 RT: 8.640 min Scan# 944
 Delta R.T. 0.000 min
 Lab File: BN020041.D
 Acq: 07 Jun 2022 22:54

Instrument : BNA_N
 ClientSampleId : DBTY9MSD

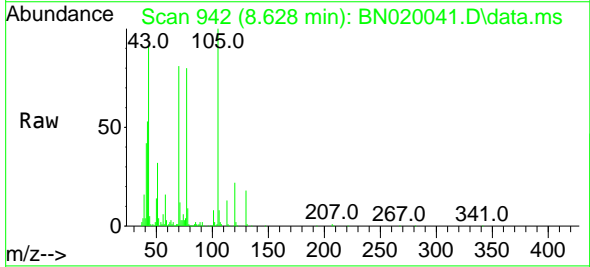


Tgt Ion: 105 Resp: 328419
 Ion Ratio Lower Upper
 105 100
 77 75.8 63.5 95.3
 51 30.4 23.5 35.3

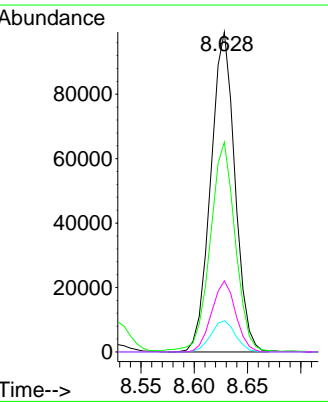
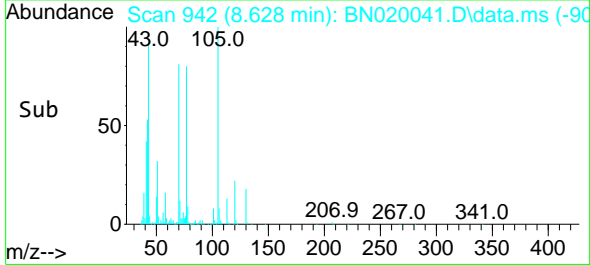
Manual Integrations
APPROVED
 Reviewed By :Jagrut Upadhyay 06/08/2022
 Supervised By :mohammad ahmed 06/09/2022

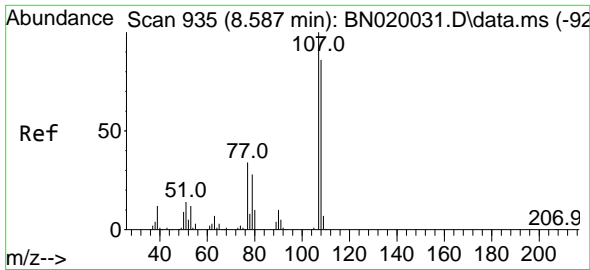


#17
 N-Nitroso-di-n-propylamine
 Concen: 22.051 ng/u1
 RT: 8.628 min Scan# 942
 Delta R.T. 0.000 min
 Lab File: BN020041.D
 Acq: 07 Jun 2022 22:54



Tgt Ion: 70 Resp: 156578
 Ion Ratio Lower Upper
 70 100
 42 65.5 47.8 71.6
 101 9.7 7.8 11.6
 130 22.2 15.8 23.8





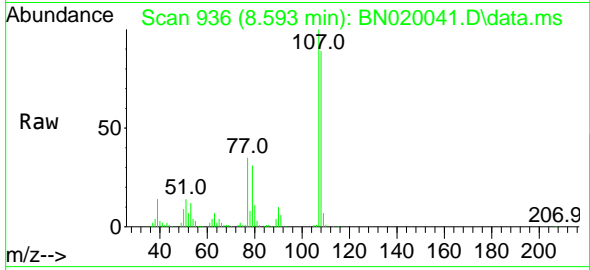
#18
 4-Methylphenol
 Concen: 21.356 ng/u1
 RT: 8.593 min Scan# 911
 Delta R.T. 0.000 min
 Lab File: BN020041.D
 Acq: 07 Jun 2022 22:54

Instrument :

BNA_N

ClientSampleId :

DBTY9MSD

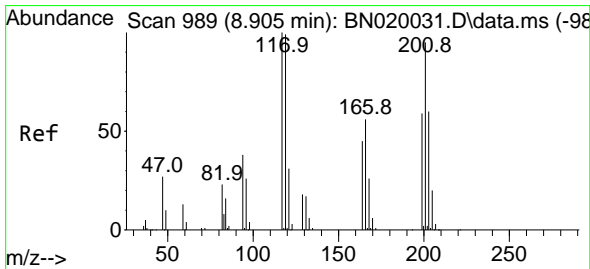
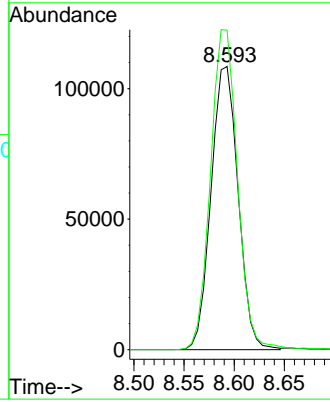
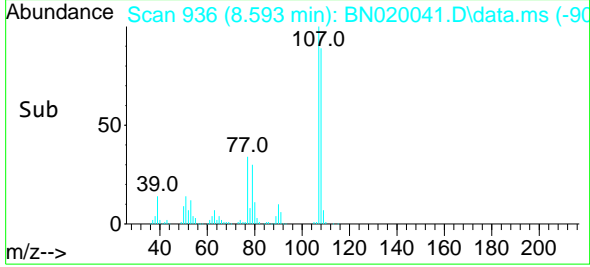


Tgt Ion:108 Resp: 203849
 Ion Ratio Lower Upper
 108 100
 107 112.8 88.0 132.0

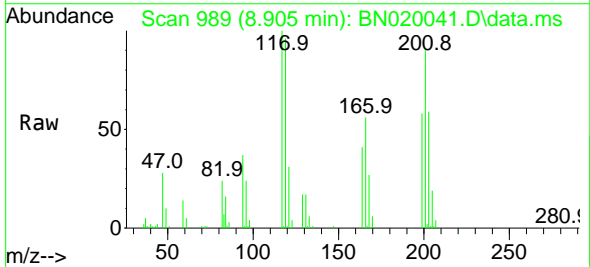
Manual Integrations

APPROVED

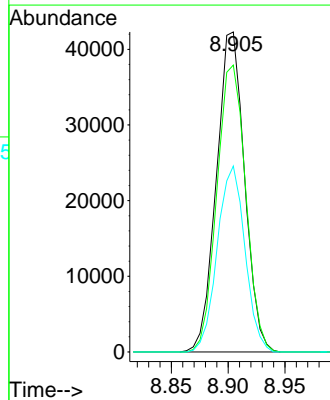
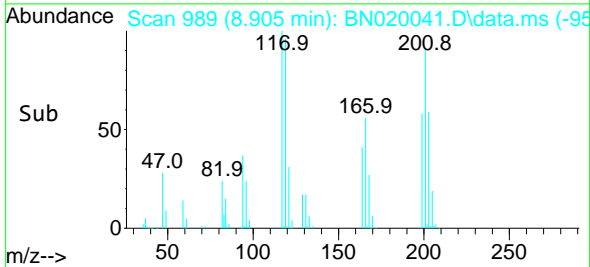
Reviewed By :Jagrut Upadhyay 06/08/2022
 Supervised By :mohammad ahmed 06/09/2022

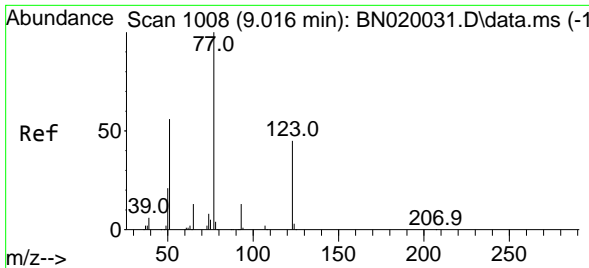


#19
 Hexachloroethane
 Concen: 20.207 ng/u1
 RT: 8.905 min Scan# 989
 Delta R.T. 0.000 min
 Lab File: BN020041.D
 Acq: 07 Jun 2022 22:54



Tgt Ion:117 Resp: 72953
 Ion Ratio Lower Upper
 117 100
 201 89.7 83.2 124.8
 199 58.1 50.2 75.4





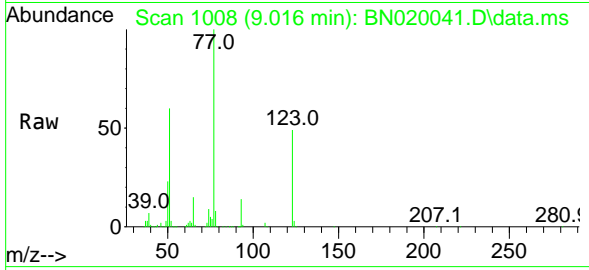
#22
 Nitrobenzene
 Concen: 21.174 ng/uI
 RT: 9.016 min Scan# 1008
 Delta R.T. 0.000 min
 Lab File: BN020041.D
 Acq: 07 Jun 2022 22:54

Instrument :

BNA_N

ClientSampleId :

DBTY9MSD

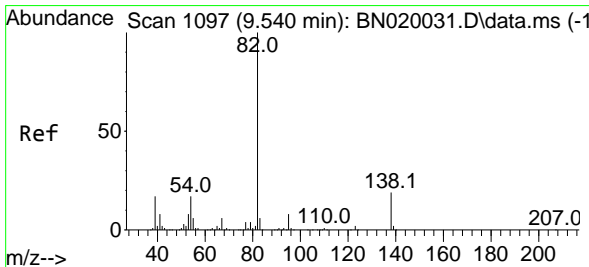
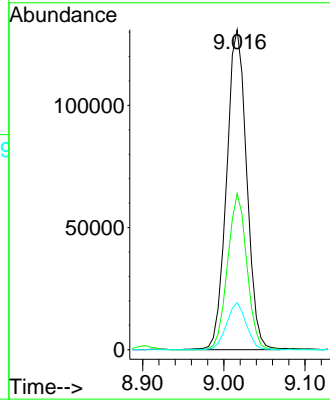
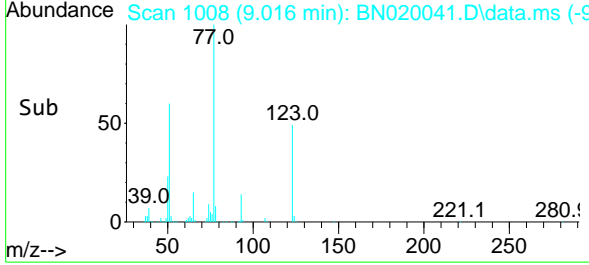


Tgt Ion: 77 Resp: 22581
 Ion Ratio Lower Upper
 77 100
 123 48.8 34.5 51.7
 65 14.7 11.1 16.7

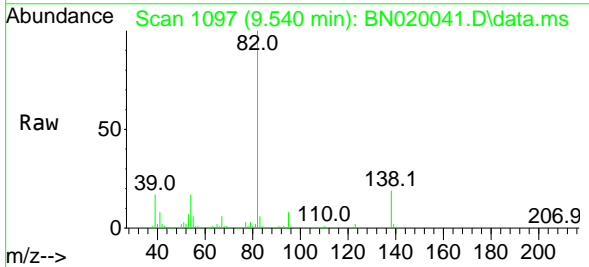
Manual Integrations

APPROVED

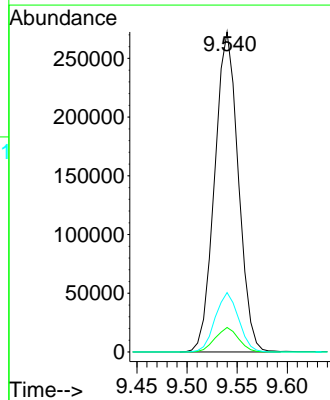
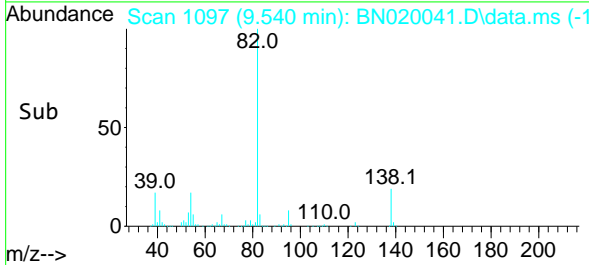
Reviewed By :Jagrut Upadhyay 06/08/2022
 Supervised By :mohammad ahmed 06/09/2022

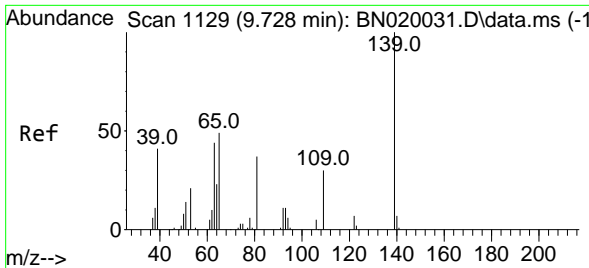


#23
 Isophorone
 Concen: 21.208 ng/uI
 RT: 9.540 min Scan# 1097
 Delta R.T. 0.000 min
 Lab File: BN020041.D
 Acq: 07 Jun 2022 22:54



Tgt Ion: 82 Resp: 446575
 Ion Ratio Lower Upper
 82 100
 95 7.6 5.8 8.8
 138 18.6 13.8 20.8





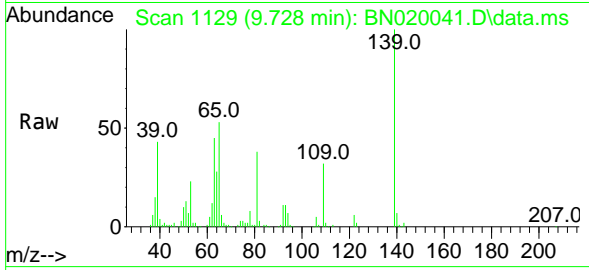
#25
 2-Nitrophenol
 Concen: 21.543 ng/ul
 RT: 9.728 min Scan# 1129
 Delta R.T. 0.000 min
 Lab File: BN020041.D
 Acq: 07 Jun 2022 22:54

Instrument :

BNA_N

ClientSampleId :

DBTY9MSD

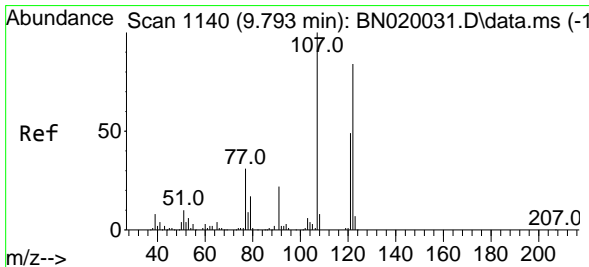
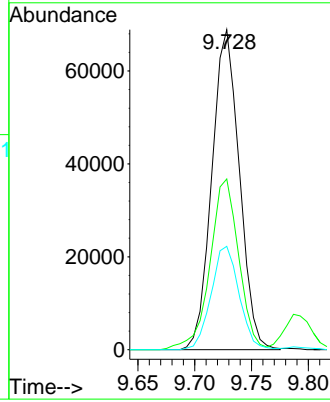
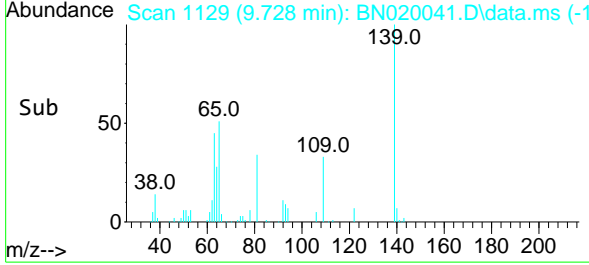


Tgt Ion:139 Resp: 116197
 Ion Ratio Lower Upper
 139 100
 65 53.3 43.7 65.5
 109 32.3 25.8 38.6

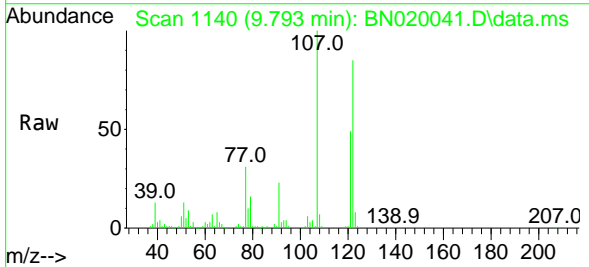
Manual Integrations

APPROVED

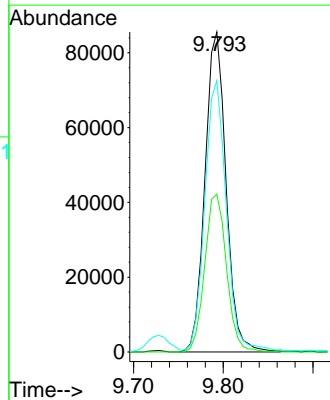
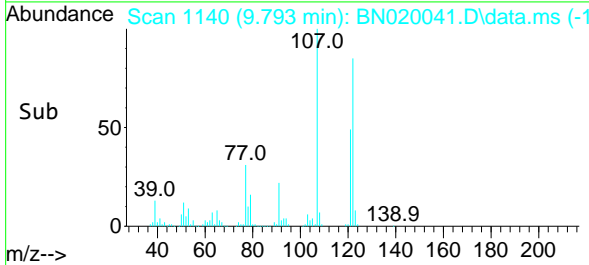
Reviewed By :Jagrut Upadhyay 06/08/2022
 Supervised By :mohammad ahmed 06/09/2022

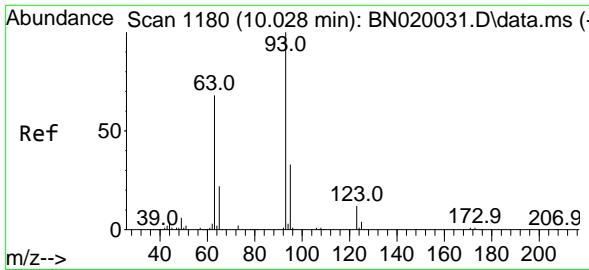


#26
 2,4-Dimethylphenol
 Concen: 12.495 ng/ul
 RT: 9.793 min Scan# 1140
 Delta R.T. 0.000 min
 Lab File: BN020041.D
 Acq: 07 Jun 2022 22:54



Tgt Ion:107 Resp: 139631
 Ion Ratio Lower Upper
 107 100
 121 49.3 38.3 57.5
 122 84.8 66.3 99.5





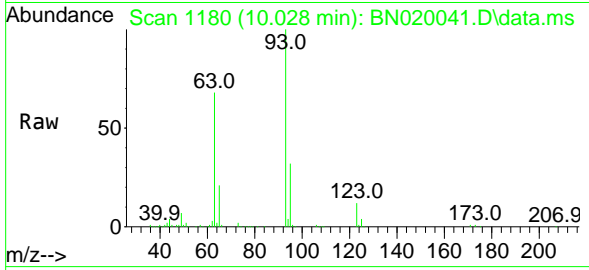
#27
 Bis(2-Chloroethoxy)methane
 Concen: 20.707 ng/ul
 RT: 10.028 min Scan# 1180
 Delta R.T. 0.000 min
 Lab File: BN020041.D
 Acq: 07 Jun 2022 22:54

Instrument :

BNA_N

ClientSampleId :

DBTY9MSD

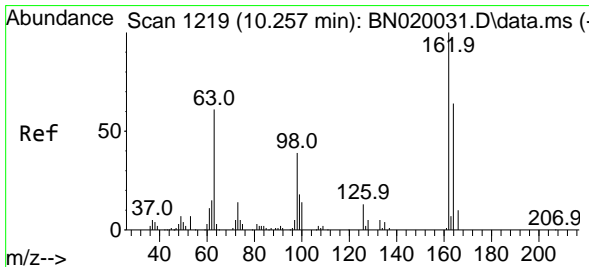
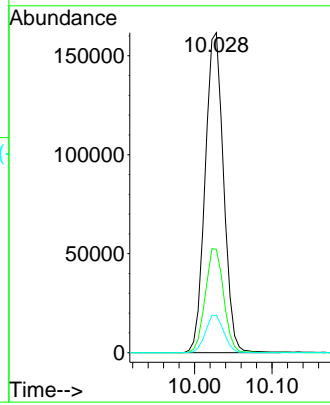
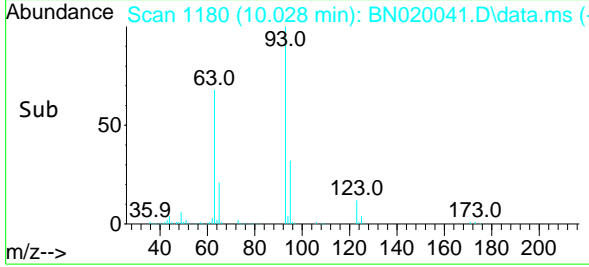


Tgt Ion: 93 Resp: 26682
 Ion Ratio Lower Upper
 93 100
 95 32.3 25.4 38.0
 123 11.7 8.3 12.5

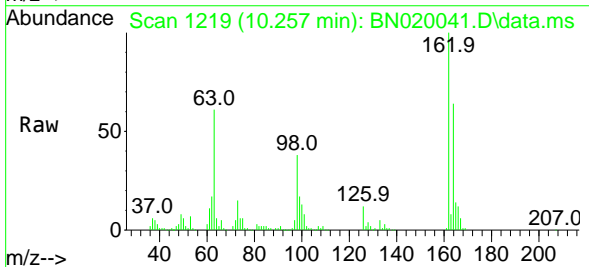
Manual Integrations

APPROVED

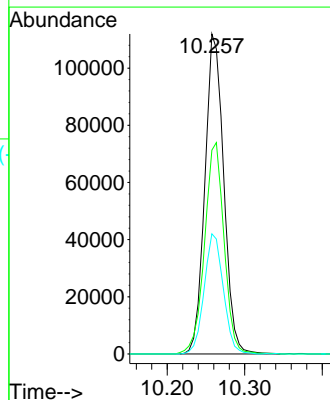
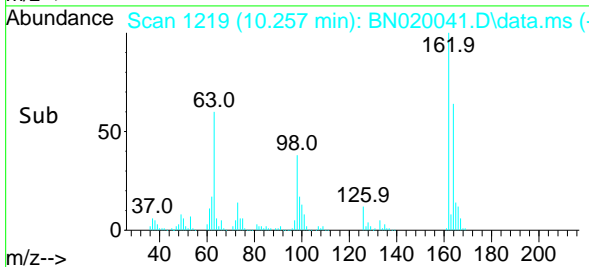
Reviewed By :Jagrut Upadhyay 06/08/2022
 Supervised By :mohammad ahmed 06/09/2022

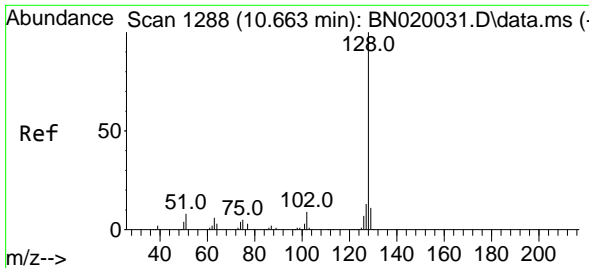


#29
 2,4-Dichlorophenol
 Concen: 21.490 ng/ul
 RT: 10.257 min Scan# 1219
 Delta R.T. -0.006 min
 Lab File: BN020041.D
 Acq: 07 Jun 2022 22:54



Tgt Ion:162 Resp: 189429
 Ion Ratio Lower Upper
 162 100
 164 63.7 52.9 79.3
 98 37.6 29.8 44.8





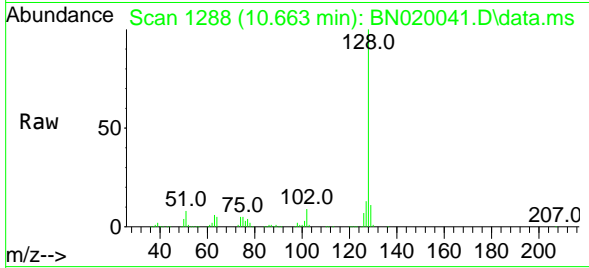
#30
 Naphthalene
 Concen: 21.015 ng/u1
 RT: 10.663 min Scan# 11
 Delta R.T. 0.000 min
 Lab File: BN020041.D
 Acq: 07 Jun 2022 22:54

Instrument :

BNA_N

ClientSampleId :

DBTY9MSD

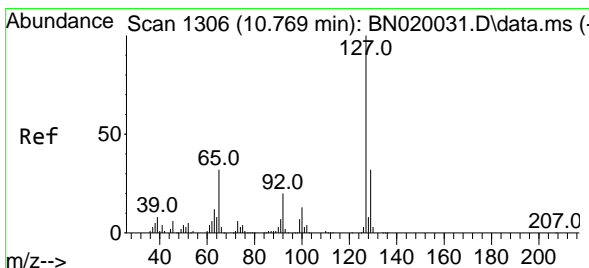
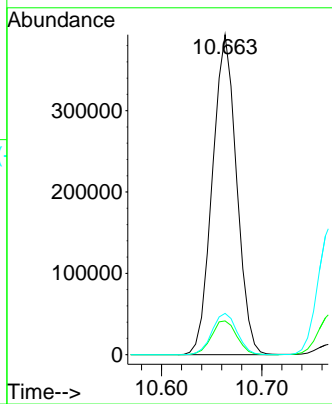
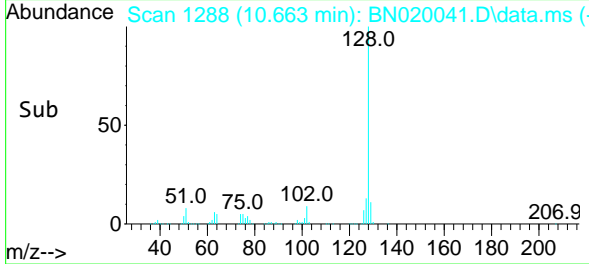


Tgt Ion:128 Resp: 65845
 Ion Ratio Lower Upper
 128 100
 129 10.6 8.7 13.1
 127 12.9 10.6 16.0

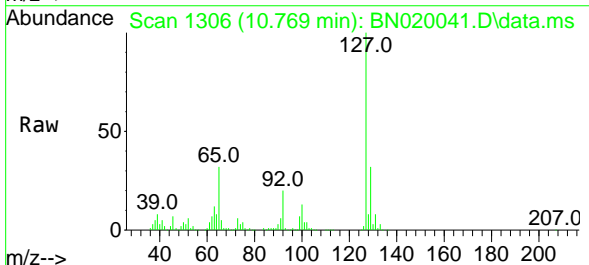
Manual Integrations

APPROVED

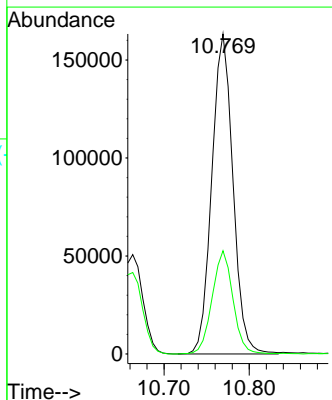
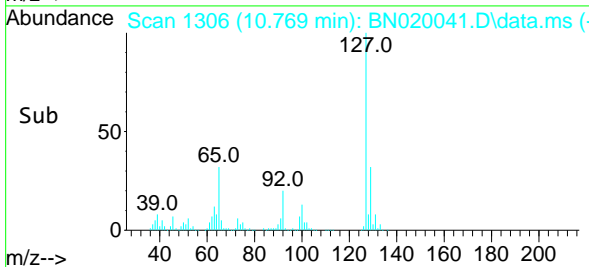
Reviewed By :Jagrut Upadhyay 06/08/2022
 Supervised By :mohammad ahmed 06/09/2022

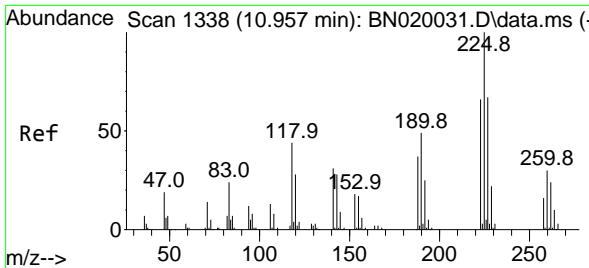


#32
 4-Chloroaniline
 Concen: 20.396 ng/u1
 RT: 10.769 min Scan# 1306
 Delta R.T. 0.000 min
 Lab File: BN020041.D
 Acq: 07 Jun 2022 22:54



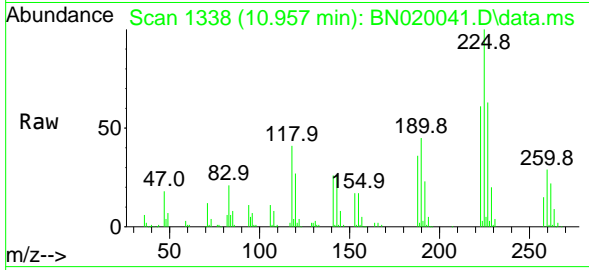
Tgt Ion:127 Resp: 281515
 Ion Ratio Lower Upper
 127 100
 129 32.3 26.1 39.1





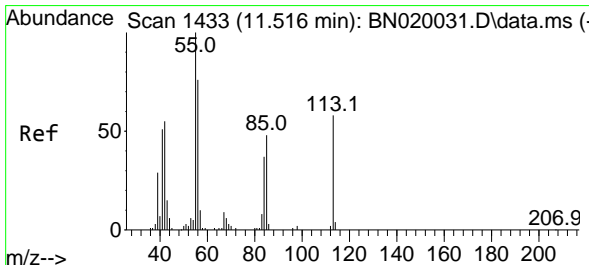
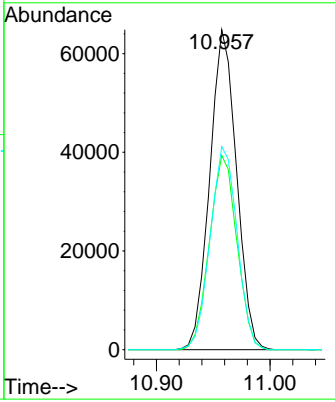
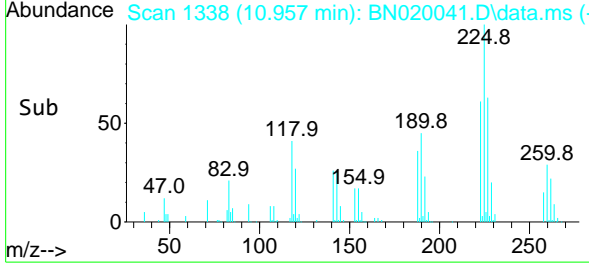
#33
 Hexachlorobutadiene
 Concen: 20.997 ng/u1
 RT: 10.957 min Scan# 111
 Delta R.T. 0.000 min
 Lab File: BN020041.D
 Acq: 07 Jun 2022 22:54

Instrument : BNA_N
 ClientSampleId : DBTY9MSD

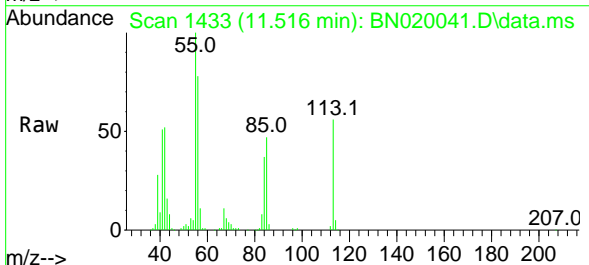


Tgt Ion:225 Resp: 106260
 Ion Ratio Lower Upper
 225 100
 223 60.7 51.8 77.6
 227 63.5 50.6 76.0

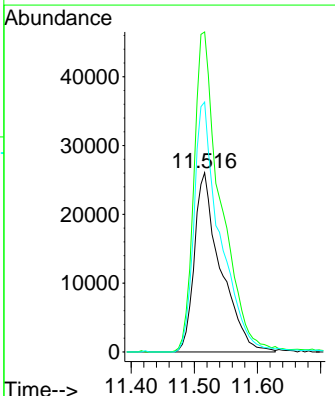
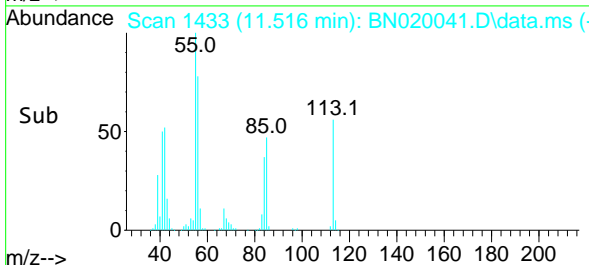
Manual Integrations
APPROVED
 Reviewed By :Jagrut Upadhyay 06/08/2022
 Supervised By :mohammad ahmed 06/09/2022

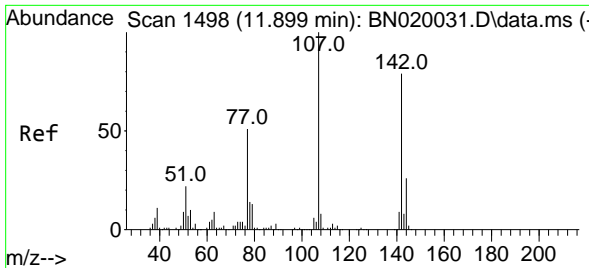


#34
 Caprolactam
 Concen: 21.745 ng/u1
 RT: 11.516 min Scan# 1433
 Delta R.T. 0.000 min
 Lab File: BN020041.D
 Acq: 07 Jun 2022 22:54



Tgt Ion:113 Resp: 74852
 Ion Ratio Lower Upper
 113 100
 55 178.5 145.5 218.3
 56 139.5 106.5 159.7





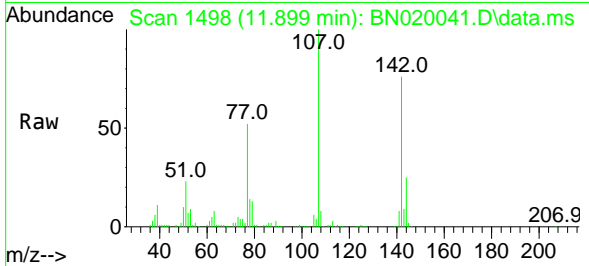
#35
 4-Chloro-3-methylphenol
 Concen: 22.302 ng/u1
 RT: 11.899 min Scan# 1498
 Delta R.T. 0.000 min
 Lab File: BN020041.D
 Acq: 07 Jun 2022 22:54

Instrument :

BNA_N

ClientSampleId :

DBTY9MSD

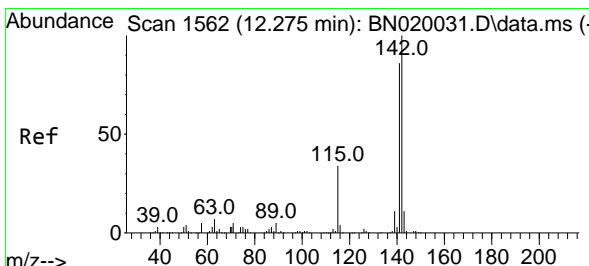
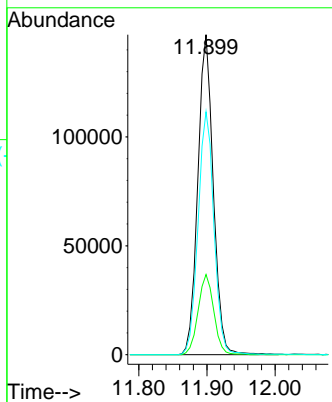
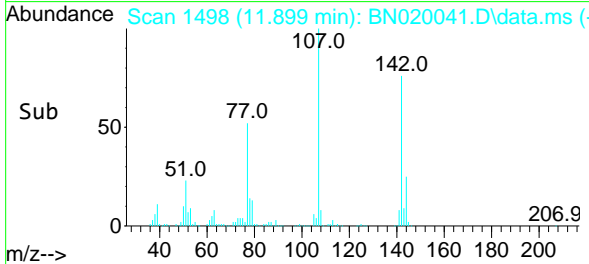


Tgt Ion:107 Resp: 232129
 Ion Ratio Lower Upper
 107 100
 144 25.1 20.6 31.0
 142 75.9 62.2 93.4

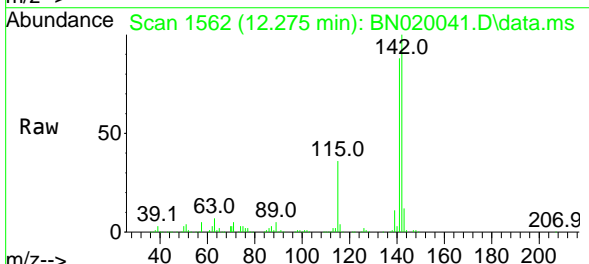
Manual Integrations

APPROVED

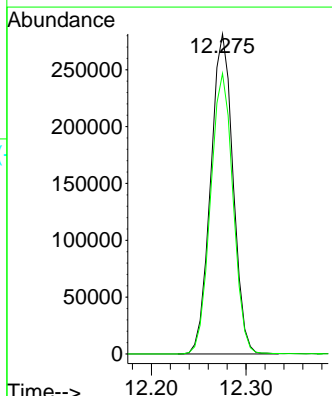
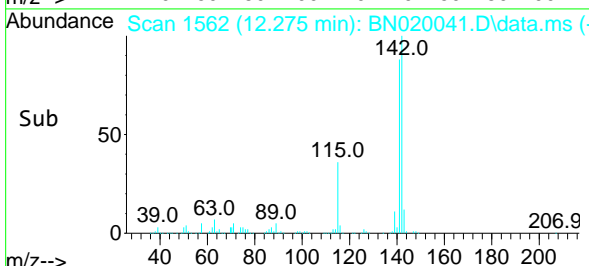
Reviewed By :Jagrut Upadhyay 06/08/2022
 Supervised By :mohammad ahmed 06/09/2022

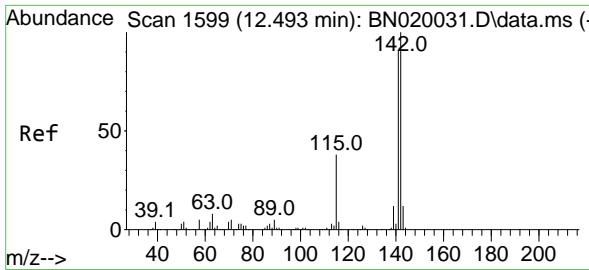


#36
 2-Methylnaphthalene
 Concen: 21.790 ng/u1
 RT: 12.275 min Scan# 1562
 Delta R.T. 0.000 min
 Lab File: BN020041.D
 Acq: 07 Jun 2022 22:54



Tgt Ion:142 Resp: 461587
 Ion Ratio Lower Upper
 142 100
 141 87.6 70.6 105.8





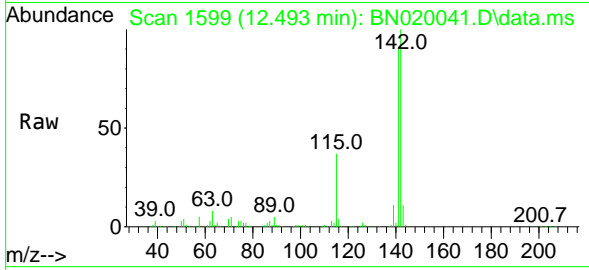
#37
 1-Methylnaphthalene
 Concen: 22.290 ng/ul
 RT: 12.493 min Scan# 1599
 Delta R.T. 0.000 min
 Lab File: BN020041.D
 Acq: 07 Jun 2022 22:54

Instrument :

BNA_N

ClientSampleId :

DBTY9MSD

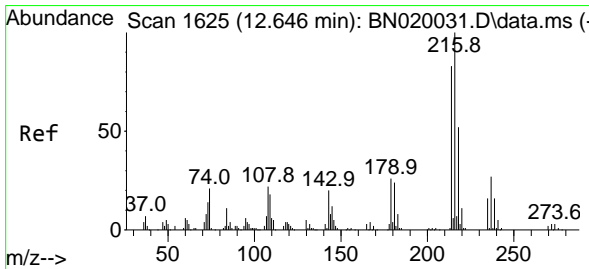
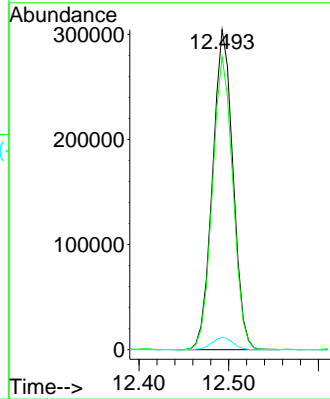
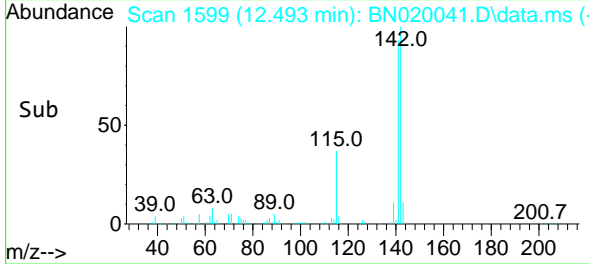


Tgt Ion:142 Resp: 48184
 Ion Ratio Lower Upper
 142 100
 141 91.5 70.9 106.3
 116 3.9 3.1 4.7

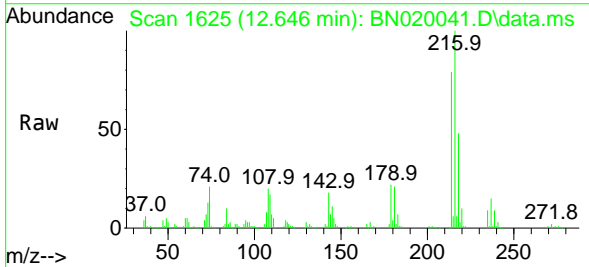
Manual Integrations

APPROVED

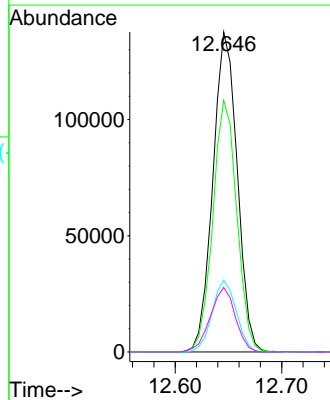
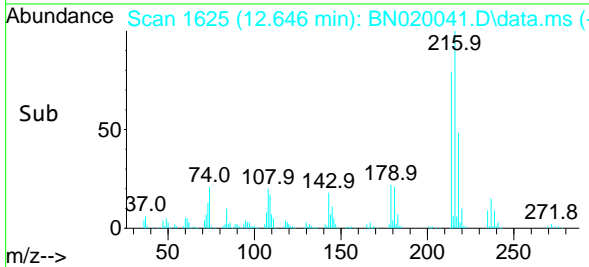
Reviewed By :Jagrut Upadhyay 06/08/2022
 Supervised By :mohammad ahmed 06/09/2022

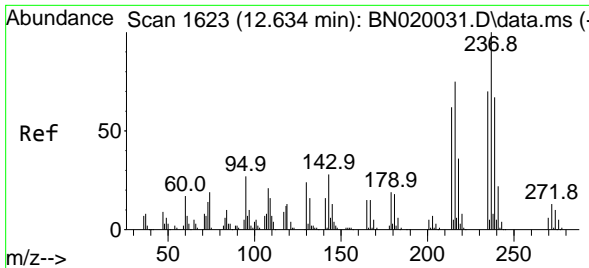


#39
 1,2,4,5-Tetrachlorobenzene
 Concen: 21.664 ng/ul
 RT: 12.646 min Scan# 1625
 Delta R.T. -0.006 min
 Lab File: BN020041.D
 Acq: 07 Jun 2022 22:54



Tgt Ion:216 Resp: 218004
 Ion Ratio Lower Upper
 216 100
 214 78.6 63.4 95.0
 179 22.5 17.8 26.8
 108 20.1 15.1 22.7





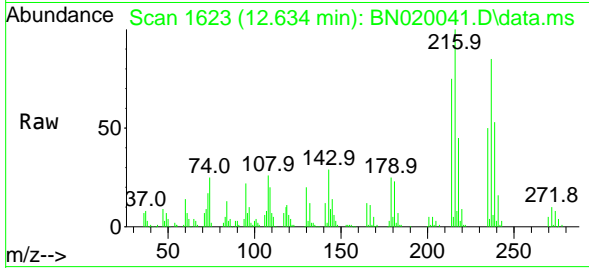
#40
 Hexachlorocyclopentadiene
 Concen: 12.956 ng/u1
 RT: 12.634 min Scan# 1623
 Delta R.T. 0.000 min
 Lab File: BN020041.D
 Acq: 07 Jun 2022 22:54

Instrument :

BNA_N

ClientSampleId :

DBTY9MSD

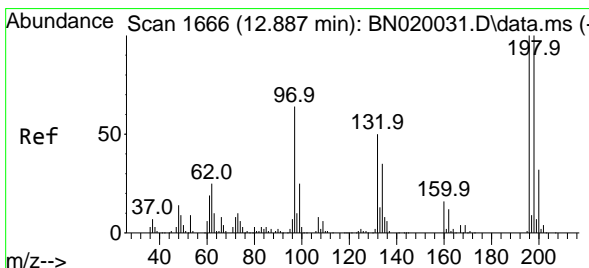
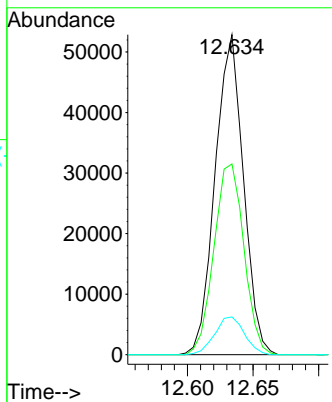
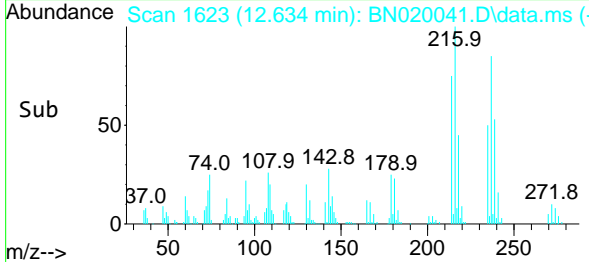


Tgt Ion:237 Resp: 79312
 Ion Ratio Lower Upper
 237 100
 235 59.6 48.8 73.2
 272 12.6 9.3 13.9

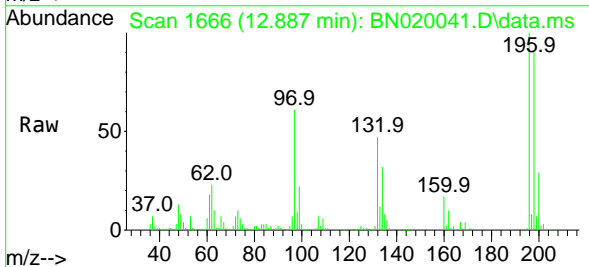
Manual Integrations

APPROVED

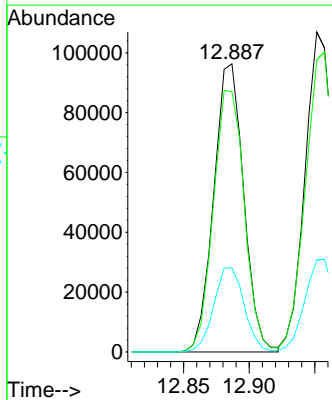
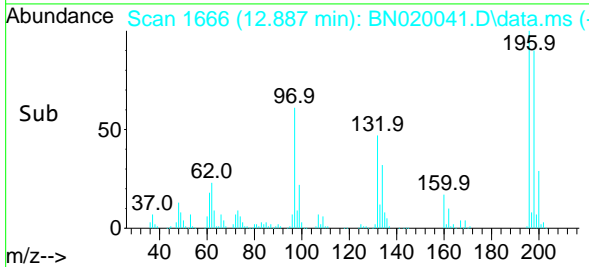
Reviewed By :Jagrut Upadhyay 06/08/2022
 Supervised By :mohammad ahmed 06/09/2022

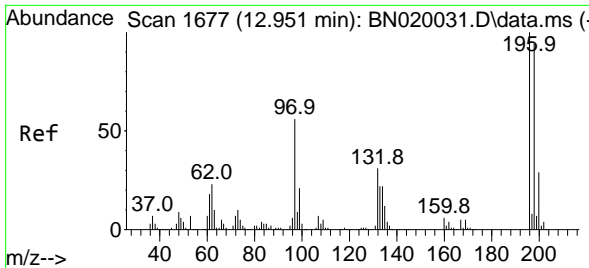


#41
 2,4,6-Trichlorophenol
 Concen: 22.067 ng/u1
 RT: 12.887 min Scan# 1666
 Delta R.T. 0.000 min
 Lab File: BN020041.D
 Acq: 07 Jun 2022 22:54



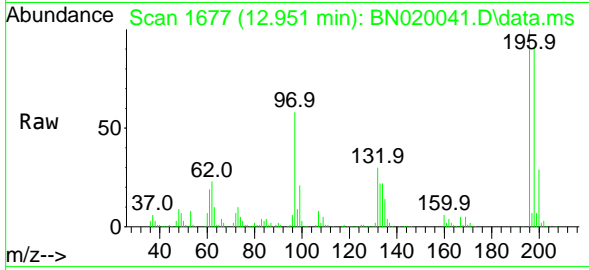
Tgt Ion:196 Resp: 153123
 Ion Ratio Lower Upper
 196 100
 198 90.3 79.8 119.8
 200 29.3 25.0 37.6





#42
 2,4,5-Trichlorophenol
 Concen: 21.808 ng/uI
 RT: 12.951 min Scan# 1677
 Delta R.T. -0.006 min
 Lab File: BN020041.D
 Acq: 07 Jun 2022 22:54

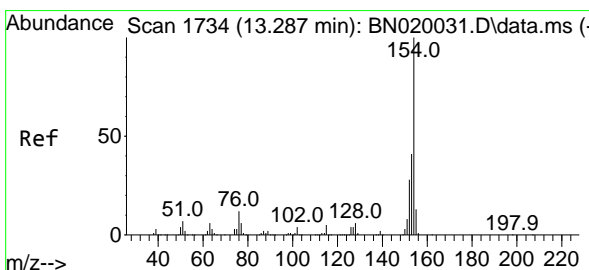
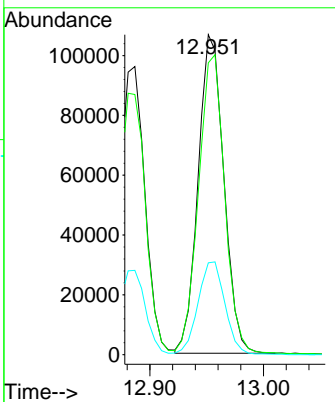
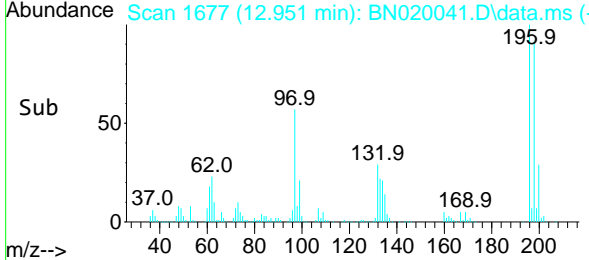
Instrument : BNA_N
 ClientSampleId : DBTY9MSD



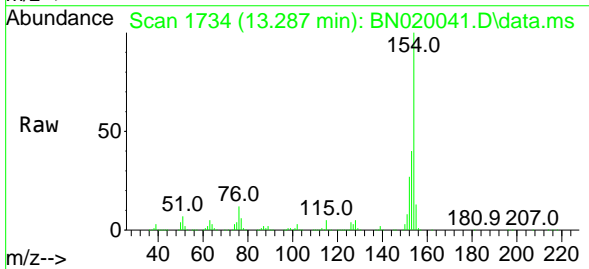
Tgt Ion:196 Resp: 167590
 Ion Ratio Lower Upper
 196 100
 198 91.2 77.6 116.4
 200 28.7 24.4 36.6

Manual Integrations
APPROVED

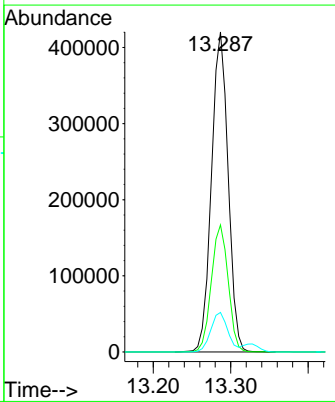
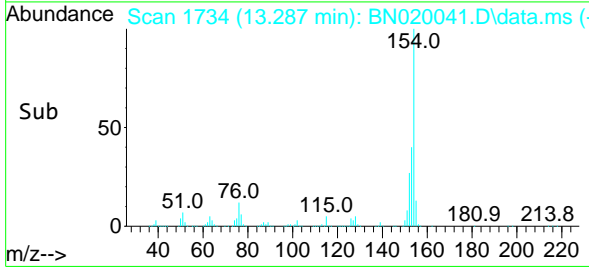
Reviewed By :Jagrut Upadhyay 06/08/2022
 Supervised By :mohammad ahmed 06/09/2022

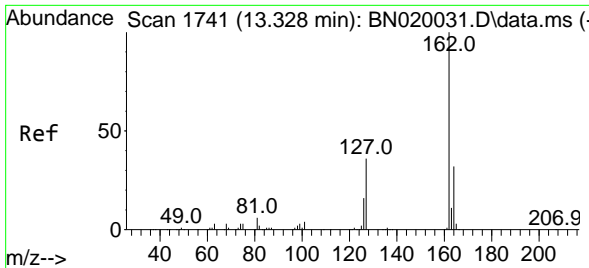


#43
 1,1'-Biphenyl
 Concen: 21.566 ng/uI
 RT: 13.287 min Scan# 1734
 Delta R.T. 0.000 min
 Lab File: BN020041.D
 Acq: 07 Jun 2022 22:54



Tgt Ion:154 Resp: 630087
 Ion Ratio Lower Upper
 154 100
 153 39.7 31.5 47.3
 76 12.4 10.5 15.7





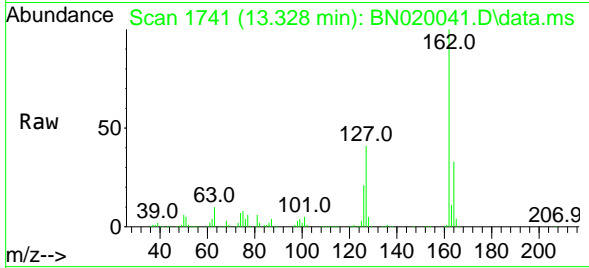
#44
 2-Chloronaphthalene
 Concen: 21.516 ng/uI
 RT: 13.328 min Scan# 1741
 Delta R.T. 0.000 min
 Lab File: BN020041.D
 Acq: 07 Jun 2022 22:54

Instrument :

BNA_N

ClientSampleId :

DBTY9MSD

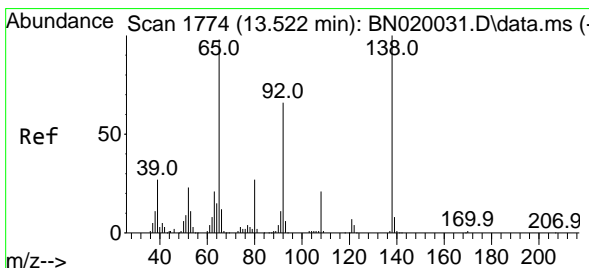
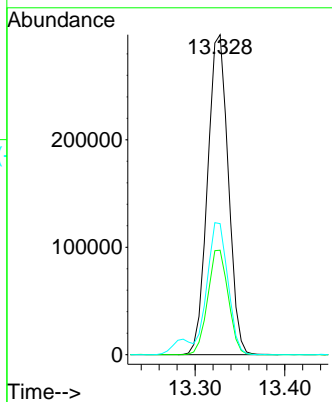
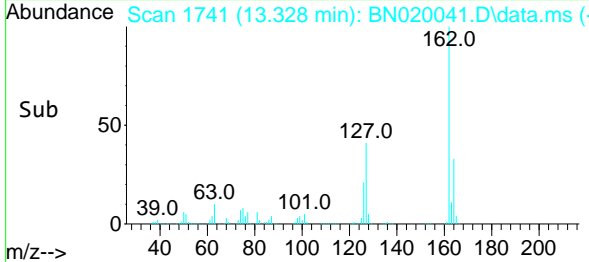


Tgt Ion:162 Resp: 47688
 Ion Ratio Lower Upper
 162 100
 164 32.7 25.8 38.6
 127 40.9 31.4 47.2

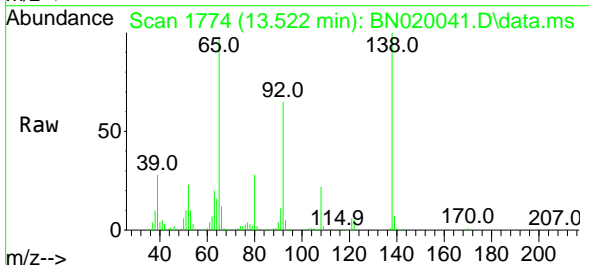
Manual Integrations

APPROVED

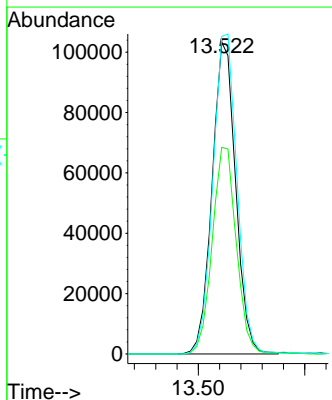
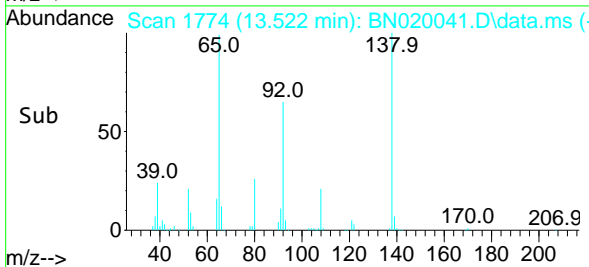
Reviewed By :Jagrut Upadhyay 06/08/2022
 Supervised By :mohammad ahmed 06/09/2022

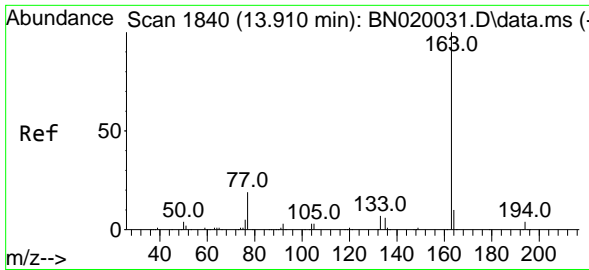


#45
 2-Nitroaniline
 Concen: 23.041 ng/uI
 RT: 13.522 min Scan# 1774
 Delta R.T. -0.006 min
 Lab File: BN020041.D
 Acq: 07 Jun 2022 22:54



Tgt Ion: 65 Resp: 158876
 Ion Ratio Lower Upper
 65 100
 92 66.2 54.1 81.1
 138 101.9 77.0 115.4





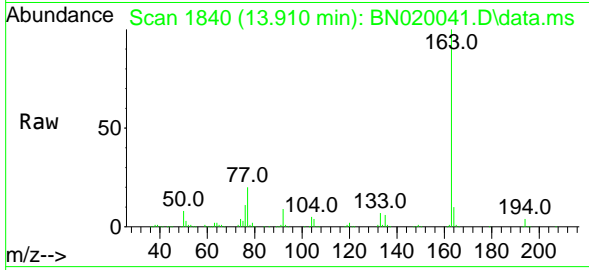
#47
 Dimethylphthalate
 Concen: 21.987 ng/ul
 RT: 13.910 min Scan# 1840
 Delta R.T. 0.000 min
 Lab File: BN020041.D
 Acq: 07 Jun 2022 22:54

Instrument :

BNA_N

ClientSampleId :

DBTY9MSD

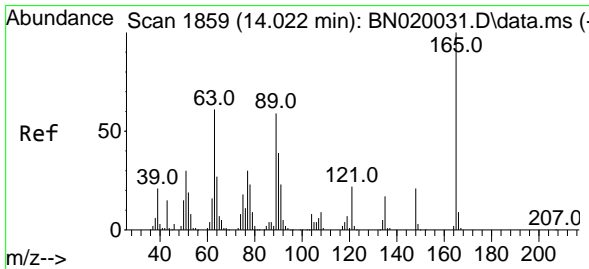
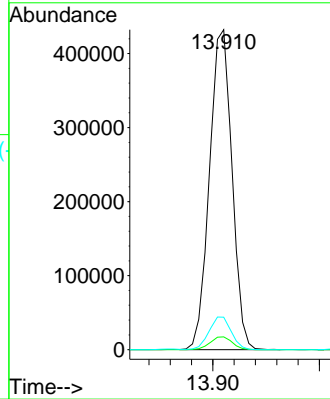
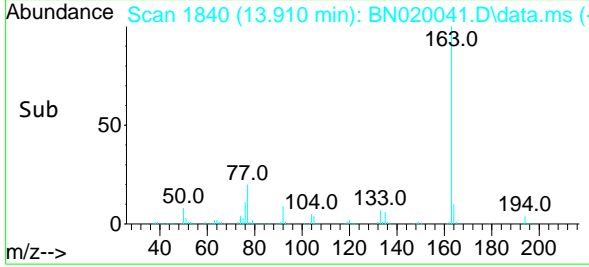


Tgt Ion:163 Resp: 63546
 Ion Ratio Lower Upper
 163 100
 194 4.0 3.4 5.0
 164 10.1 7.7 11.5

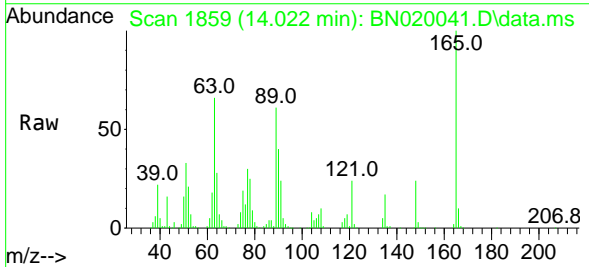
Manual Integrations

APPROVED

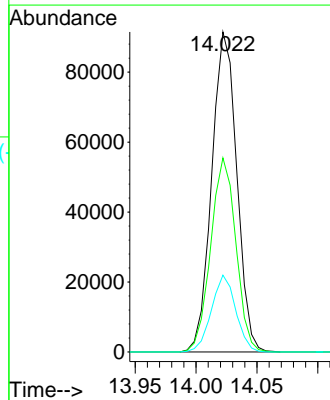
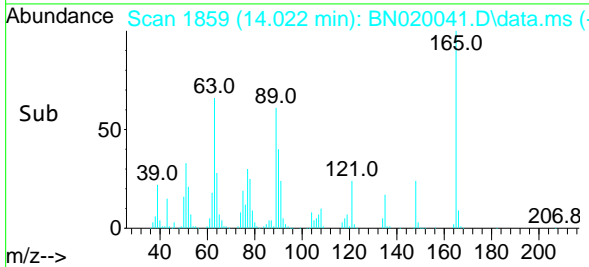
Reviewed By :Jagrut Upadhyay 06/08/2022
 Supervised By :mohammad ahmed 06/09/2022

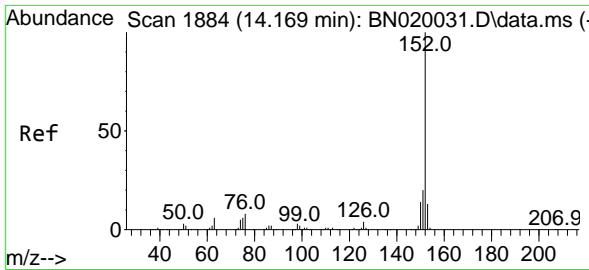


#48
 2,6-Dinitrotoluene
 Concen: 23.154 ng/ul
 RT: 14.022 min Scan# 1859
 Delta R.T. -0.006 min
 Lab File: BN020041.D
 Acq: 07 Jun 2022 22:54



Tgt Ion:165 Resp: 130840
 Ion Ratio Lower Upper
 165 100
 89 60.6 50.6 75.8
 121 24.0 17.9 26.9





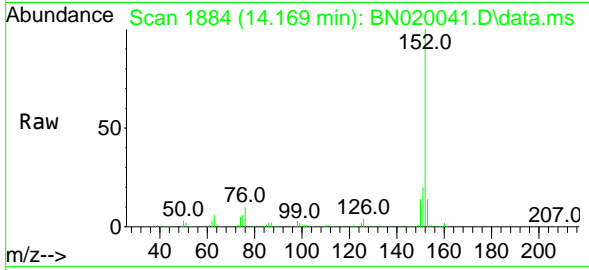
#50
 Acenaphthylene
 Concen: 21.882 ng/u1
 RT: 14.169 min Scan# 1884
 Delta R.T. 0.000 min
 Lab File: BN020041.D
 Acq: 07 Jun 2022 22:54

Instrument :

BNA_N

Client SampleId :

DBTY9MSD

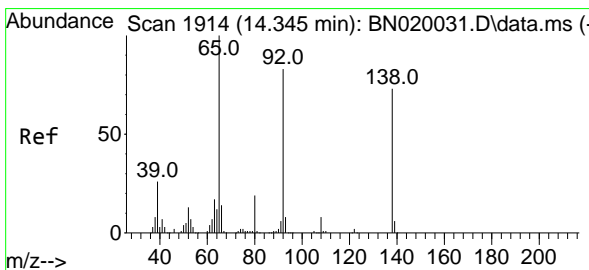
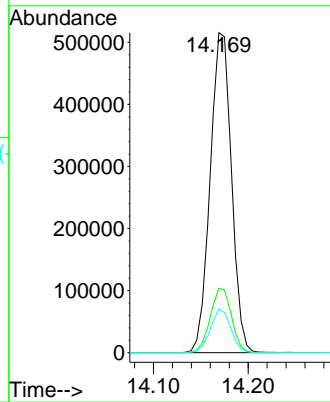
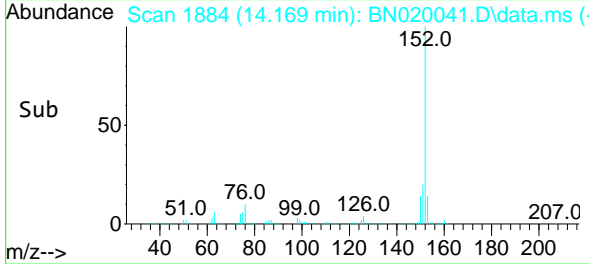


Tgt Ion:152 Resp: 806593
 Ion Ratio Lower Upper
 152 100
 151 20.2 16.0 24.0
 153 13.7 10.7 16.1

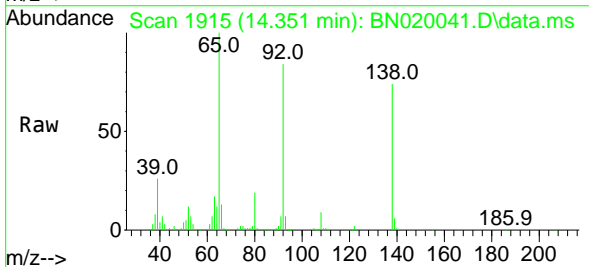
Manual Integrations

APPROVED

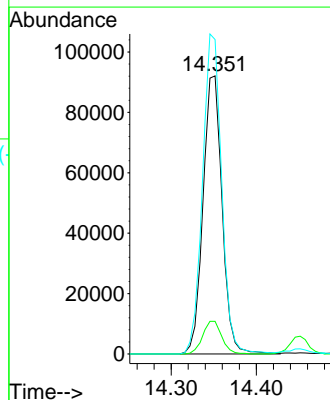
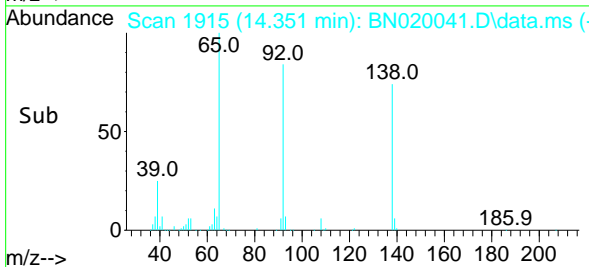
Reviewed By :Jagrut Upadhyay 06/08/2022
 Supervised By :mohammad ahmed 06/09/2022

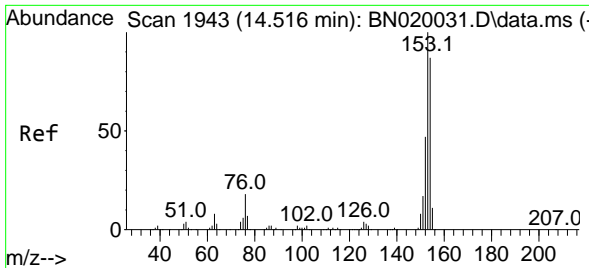


#51
 3-Nitroaniline
 Concen: 24.037 ng/u1
 RT: 14.351 min Scan# 1915
 Delta R.T. 0.000 min
 Lab File: BN020041.D
 Acq: 07 Jun 2022 22:54



Tgt Ion:138 Resp: 143593
 Ion Ratio Lower Upper
 138 100
 108 11.7 8.6 12.8
 92 113.0 92.9 139.3





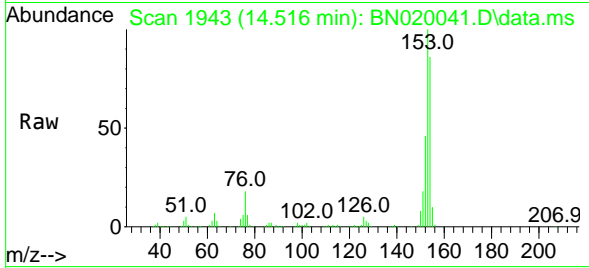
#52
 Acenaphthene
 Concen: 22.268 ng/uI
 RT: 14.516 min Scan# 1943
 Delta R.T. 0.000 min
 Lab File: BN020041.D
 Acq: 07 Jun 2022 22:54

Instrument :

BNA_N

ClientSampleId :

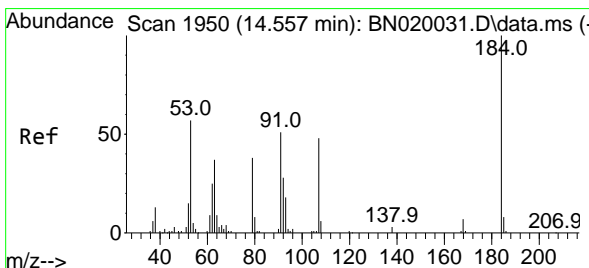
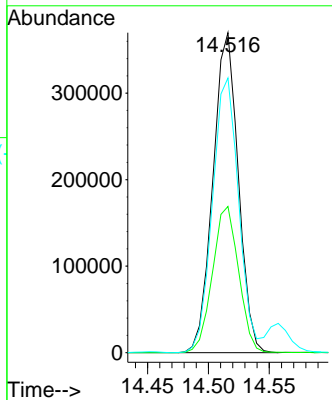
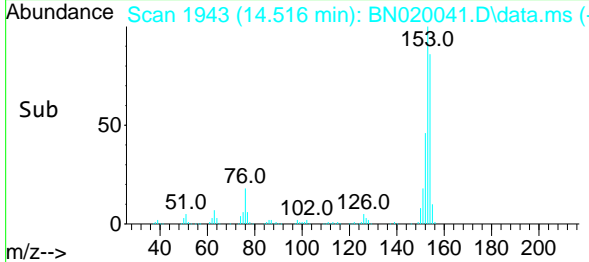
DBTY9MSD



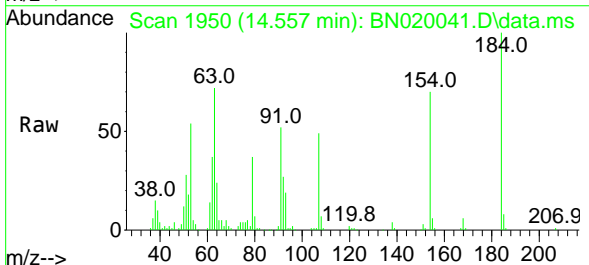
Tgt Ion:153 Resp: 53615
 Ion Ratio Lower Upper
 153 100
 152 45.7 38.4 57.6
 154 85.9 69.7 104.5

Manual Integrations
 APPROVED

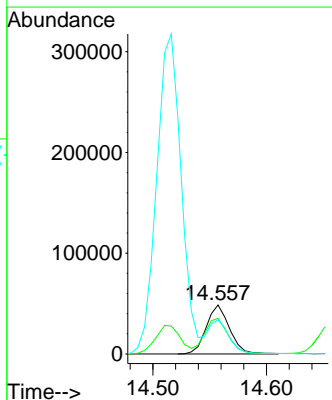
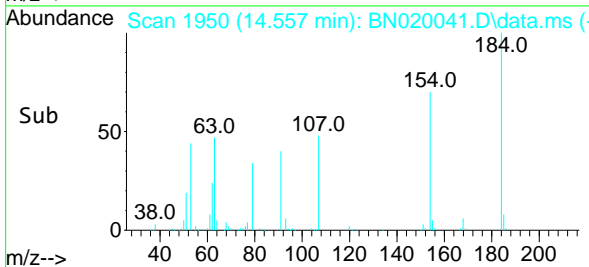
Reviewed By :Jagrut Upadhyay 06/08/2022
 Supervised By :mohammad ahmed 06/09/2022

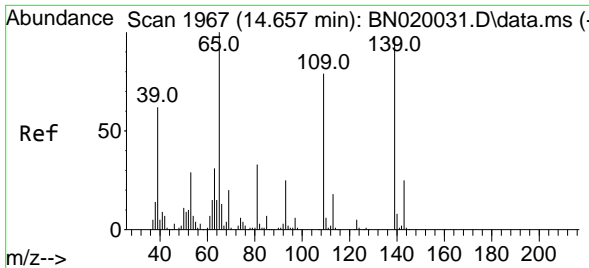


#53
 2,4-Dinitrophenol
 Concen: 19.072 ng/uI
 RT: 14.557 min Scan# 1950
 Delta R.T. 0.000 min
 Lab File: BN020041.D
 Acq: 07 Jun 2022 22:54



Tgt Ion:184 Resp: 69000
 Ion Ratio Lower Upper
 184 100
 63 72.5 55.9 83.9
 154 69.6 53.1 79.7





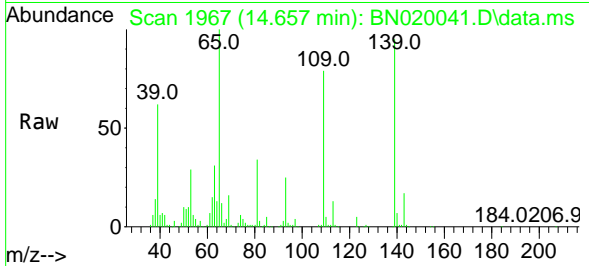
#55
 4-Nitrophenol
 Concen: 22.921 ng/uI
 RT: 14.657 min Scan# 1967
 Delta R.T. 0.000 min
 Lab File: BN020041.D
 Acq: 07 Jun 2022 22:54

Instrument :

BNA_N

ClientSampleId :

DBTY9MSD

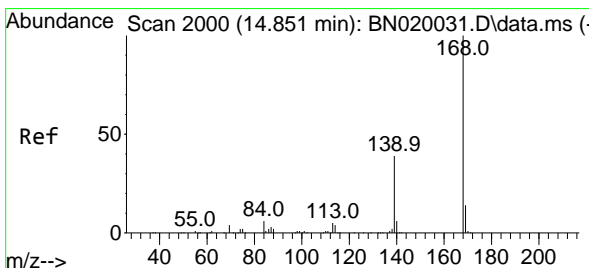
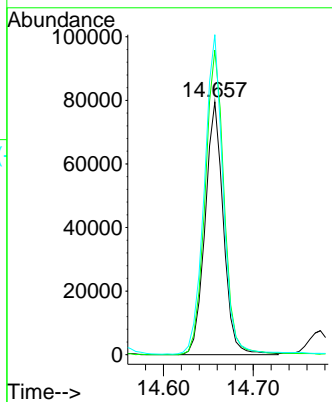
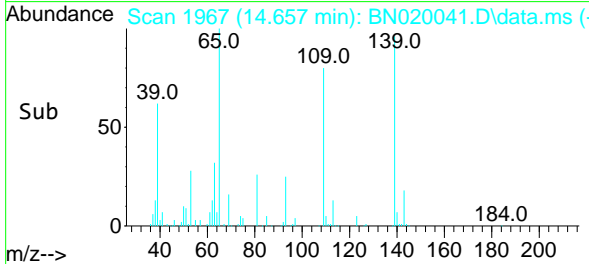


Tgt Ion:109 Resp: 112558
 Ion Ratio Lower Upper
 109 100
 139 120.5 100.1 150.1
 65 126.6 104.6 157.0

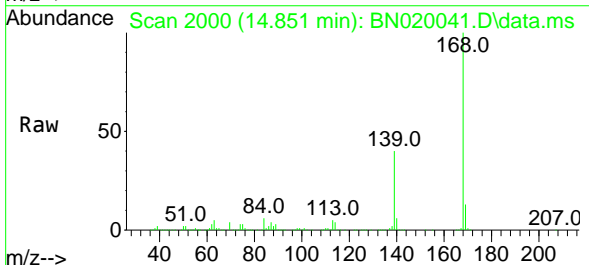
Manual Integrations

APPROVED

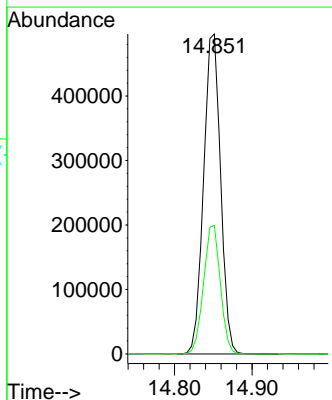
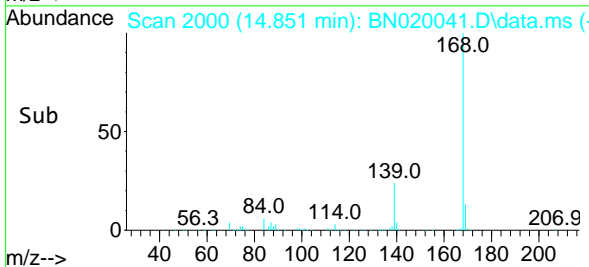
Reviewed By :Jagrut Upadhyay 06/08/2022
 Supervised By :mohammad ahmed 06/09/2022

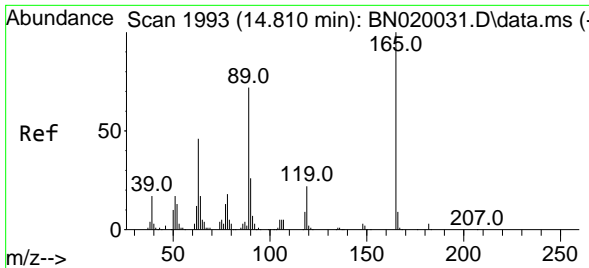


#56
 Dibenzofuran
 Concen: 22.234 ng/uI
 RT: 14.851 min Scan# 2000
 Delta R.T. 0.000 min
 Lab File: BN020041.D
 Acq: 07 Jun 2022 22:54



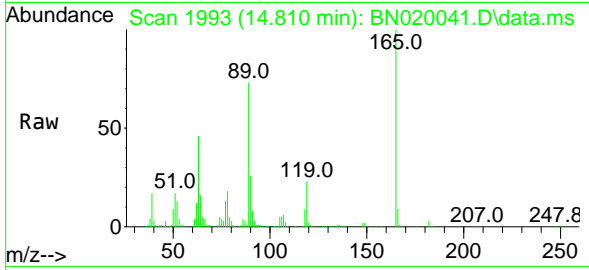
Tgt Ion:168 Resp: 754222
 Ion Ratio Lower Upper
 168 100
 139 40.2 31.1 46.7





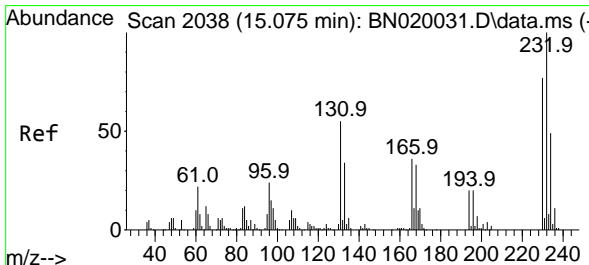
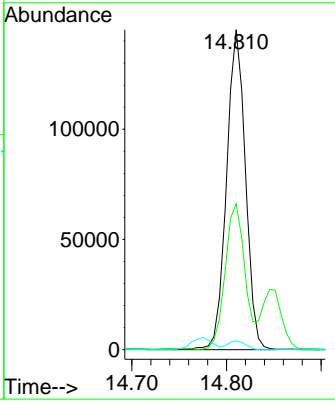
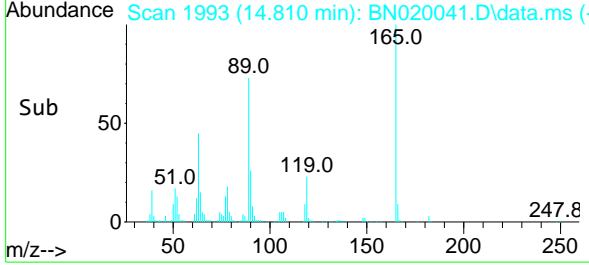
#57
 2,4-Dinitrotoluene
 Concen: 24.034 ng/ul
 RT: 14.810 min Scan# 1993
 Delta R.T. 0.000 min
 Lab File: BN020041.D
 Acq: 07 Jun 2022 22:54

Instrument : BNA_N
 ClientSampleId : DBTY9MSD

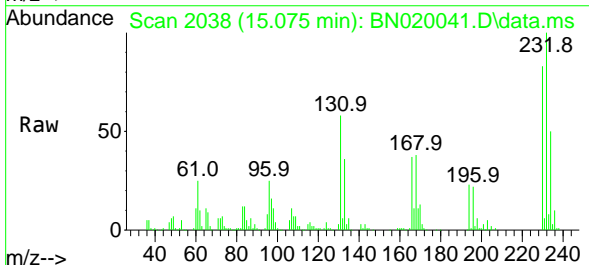


Tgt Ion:165 Resp: 20108
 Ion Ratio Lower Upper
 165 100
 63 45.5 36.3 54.5
 182 2.8 2.3 3.5

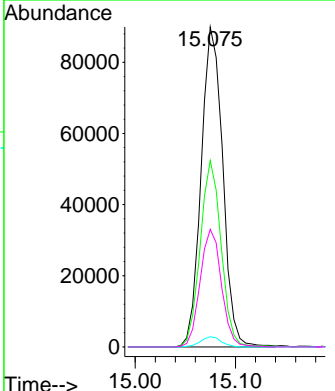
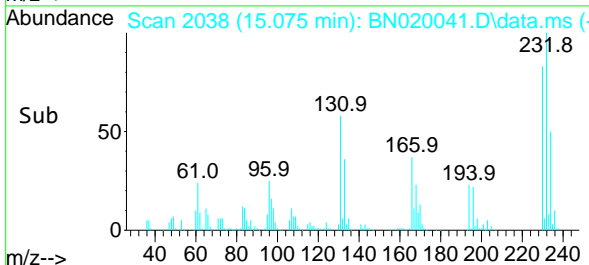
Manual Integrations
APPROVED
 Reviewed By :Jagrut Upadhyay 06/08/2022
 Supervised By :mohammad ahmed 06/09/2022

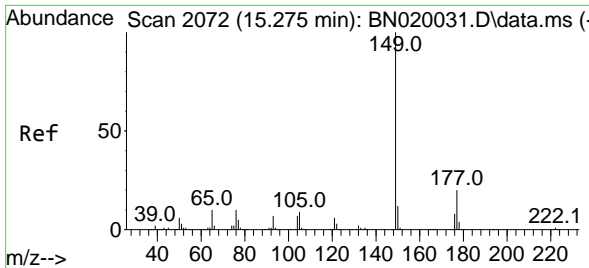


#58
 2,3,4,6-Tetrachlorophenol
 Concen: 22.358 ng/ul
 RT: 15.075 min Scan# 2038
 Delta R.T. 0.000 min
 Lab File: BN020041.D
 Acq: 07 Jun 2022 22:54



Tgt Ion:232 Resp: 134878
 Ion Ratio Lower Upper
 232 100
 131 58.2 38.5 57.7#
 130 3.2 2.2 3.2
 166 36.7 25.8 38.8





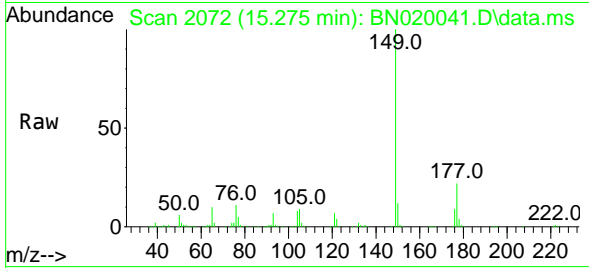
#59
 Diethylphthalate
 Concen: 22.613 ng/u1
 RT: 15.275 min Scan# 2072
 Delta R.T. 0.000 min
 Lab File: BN020041.D
 Acq: 07 Jun 2022 22:54

Instrument :

BNA_N

ClientSampleId :

DBTY9MSD

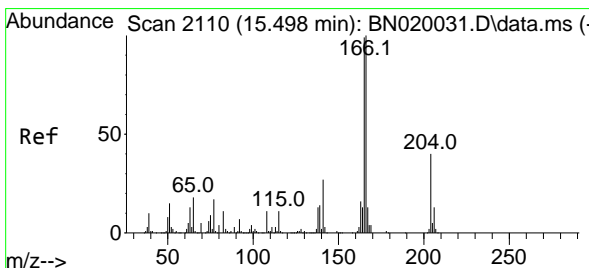
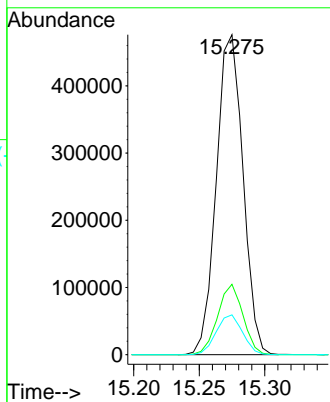
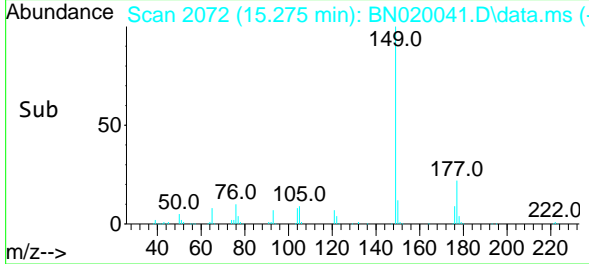


Tgt Ion:149 Resp: 67287
 Ion Ratio Lower Upper
 149 100
 177 22.0 17.8 26.8
 150 12.5 10.5 15.7

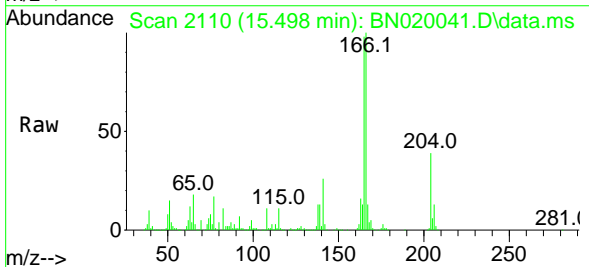
Manual Integrations

APPROVED

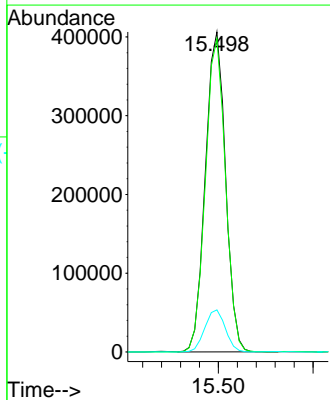
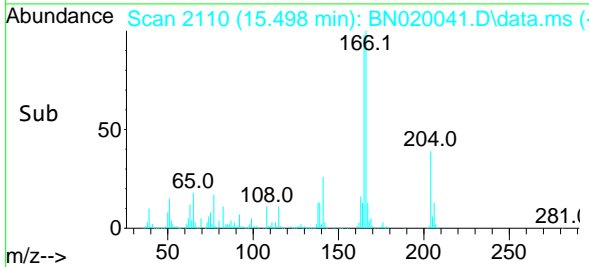
Reviewed By :Jagrut Upadhyay 06/08/2022
 Supervised By :mohammad ahmed 06/09/2022

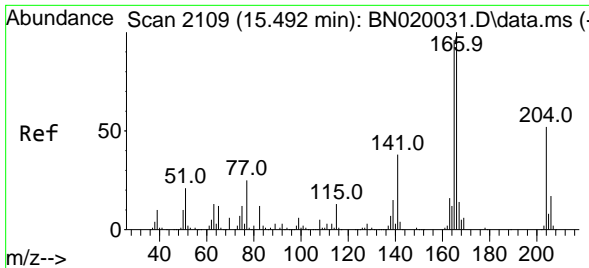


#61
 Fluorene
 Concen: 22.730 ng/u1
 RT: 15.498 min Scan# 2110
 Delta R.T. 0.000 min
 Lab File: BN020041.D
 Acq: 07 Jun 2022 22:54



Tgt Ion:166 Resp: 599970
 Ion Ratio Lower Upper
 166 100
 165 97.9 77.7 116.5
 167 13.2 11.1 16.7





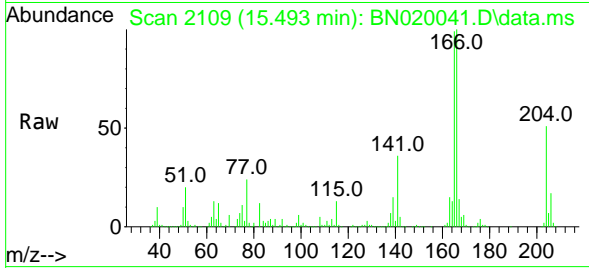
#62
 4-Chlorophenyl-phenylether
 Concen: 22.361 ng/ul
 RT: 15.493 min Scan# 2109
 Delta R.T. 0.000 min
 Lab File: BN020041.D
 Acq: 07 Jun 2022 22:54

Instrument :

BNA_N

ClientSampleId :

DBTY9MSD

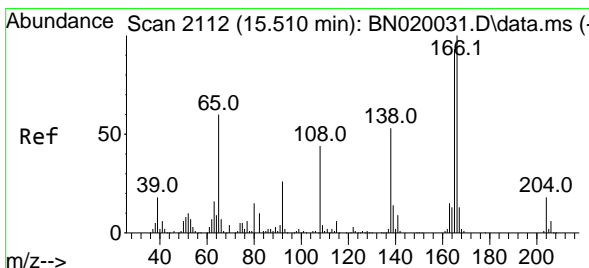
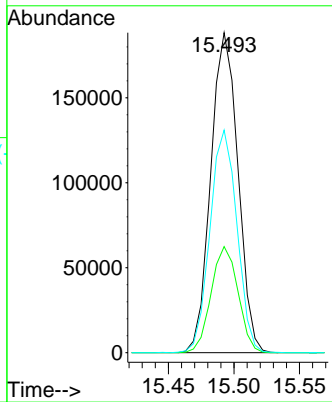
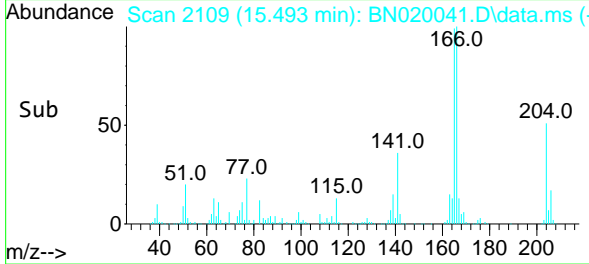


Tgt Ion:204 Resp: 27182
 Ion Ratio Lower Upper
 204 100
 206 33.2 26.7 40.1
 141 69.6 50.2 75.2

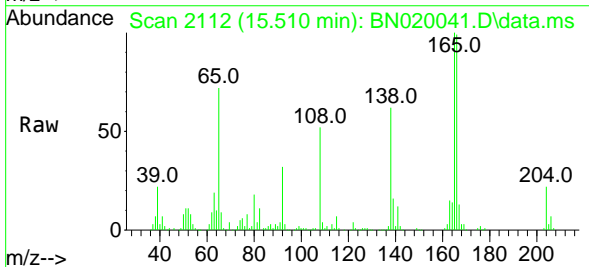
Manual Integrations

APPROVED

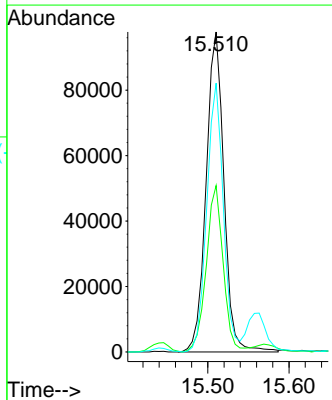
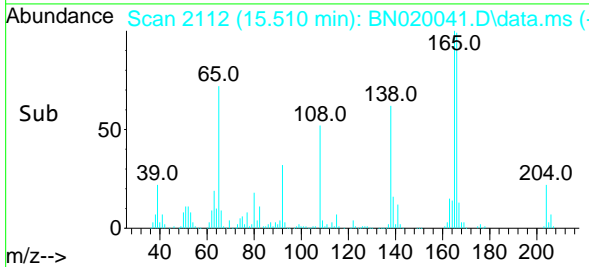
Reviewed By :Jagrut Upadhyay 06/08/2022
 Supervised By :mohammad ahmed 06/09/2022

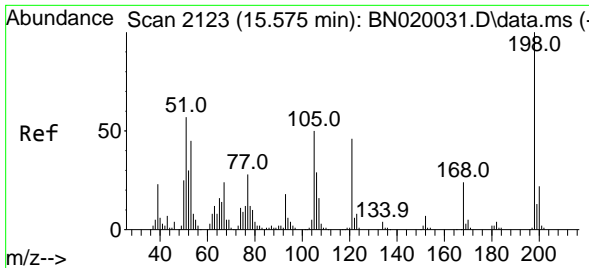


#63
 4-Nitroaniline
 Concen: 26.658 ng/ul
 RT: 15.510 min Scan# 2112
 Delta R.T. 0.000 min
 Lab File: BN020041.D
 Acq: 07 Jun 2022 22:54



Tgt Ion:138 Resp: 148813
 Ion Ratio Lower Upper
 138 100
 92 52.0 41.0 61.6
 108 84.0 65.3 97.9





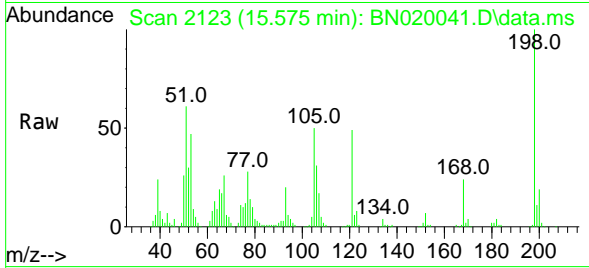
#66
 4,6-Dinitro-2-methylphenol
 Concen: 22.195 ng/ul
 RT: 15.575 min Scan# 2123
 Delta R.T. 0.000 min
 Lab File: BN020041.D
 Acq: 07 Jun 2022 22:54

Instrument :

BNA_N

ClientSampleId :

DBTY9MSD

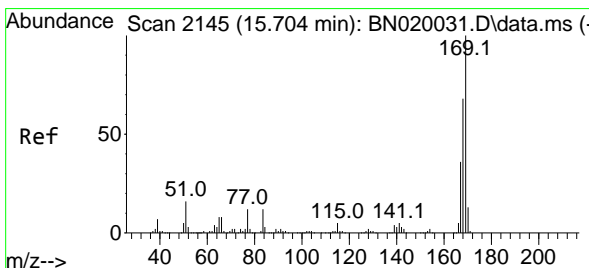
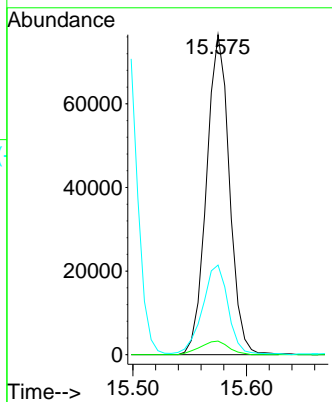
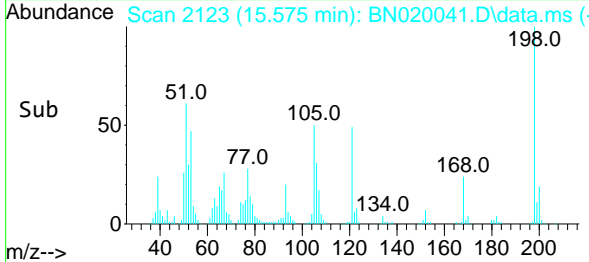


Tgt Ion:198 Resp: 107400
 Ion Ratio Lower Upper
 198 100
 182 4.3 3.0 4.4
 77 28.0 20.1 30.1

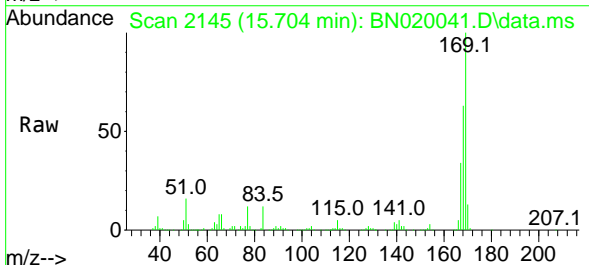
Manual Integrations

APPROVED

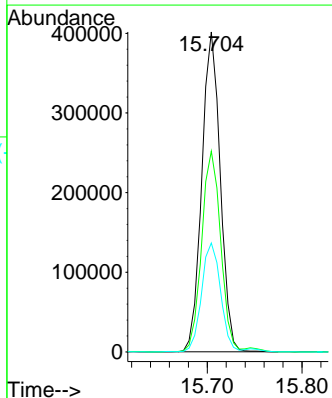
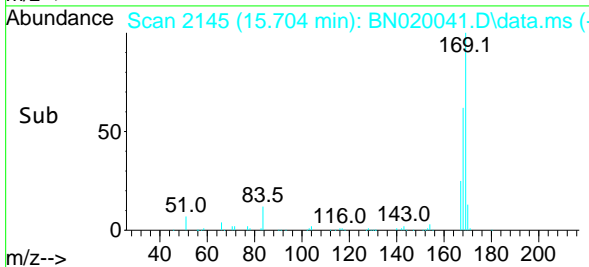
Reviewed By :Jagrut Upadhyay 06/08/2022
 Supervised By :mohammad ahmed 06/09/2022

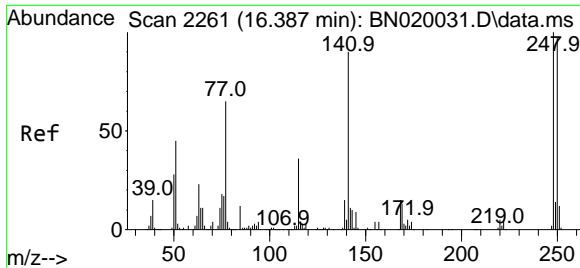


#67
 N-Nitrosodiphenylamine
 Concen: 23.058 ng/ul
 RT: 15.704 min Scan# 2145
 Delta R.T. 0.000 min
 Lab File: BN020041.D
 Acq: 07 Jun 2022 22:54



Tgt Ion:169 Resp: 544675
 Ion Ratio Lower Upper
 169 100
 168 62.7 52.4 78.6
 167 34.1 27.5 41.3





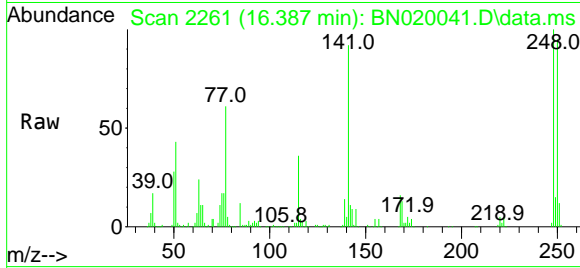
#68
 4-Bromophenyl-phenylether
 Concen: 22.401 ng/ul
 RT: 16.387 min Scan# 2261
 Delta R.T. 0.000 min
 Lab File: BN020041.D
 Acq: 07 Jun 2022 22:54

Instrument :

BNA_N

ClientSampleId :

DBTY9MSD

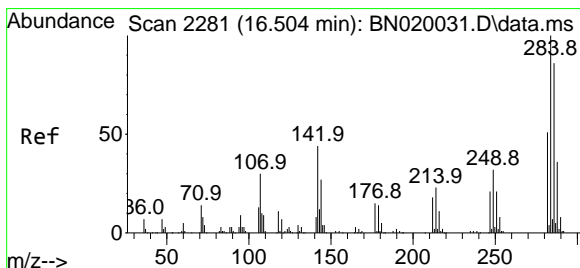
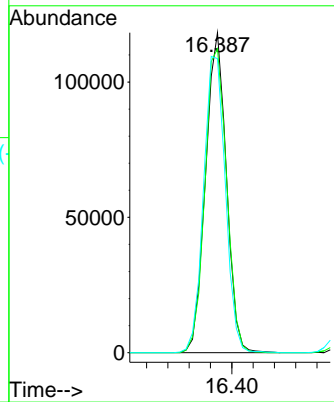
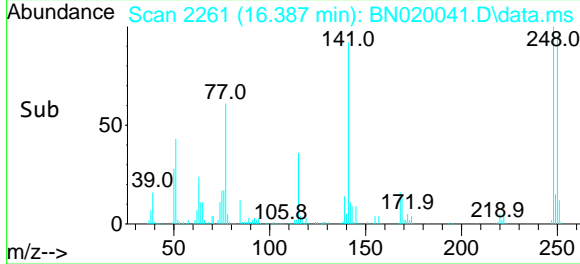


Tgt Ion:248 Resp: 16074
 Ion Ratio Lower Upper
 248 100
 250 95.0 77.8 116.8
 141 91.9 62.6 93.8

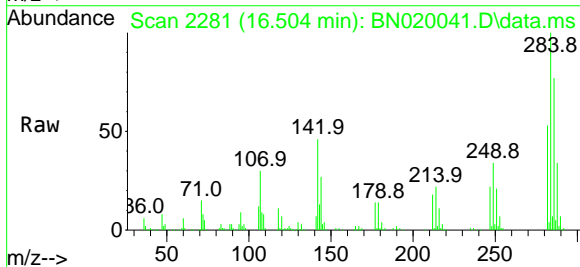
Manual Integrations

APPROVED

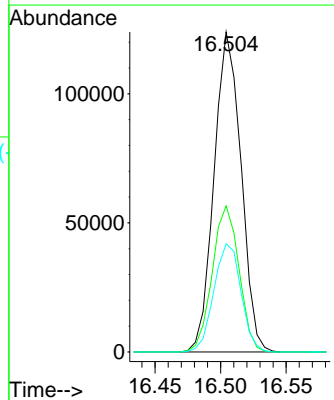
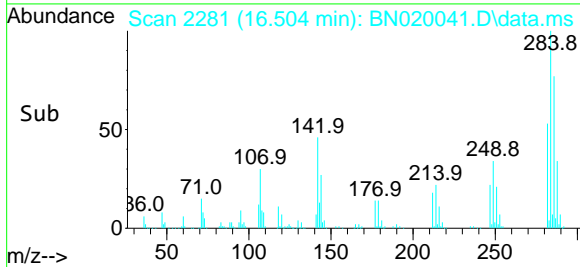
Reviewed By :Jagrut Upadhyay 06/08/2022
 Supervised By :mohammad ahmed 06/09/2022

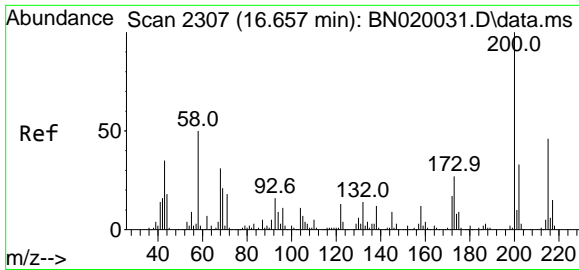


#69
 Hexachlorobenzene
 Concen: 21.469 ng/ul
 RT: 16.504 min Scan# 2281
 Delta R.T. 0.000 min
 Lab File: BN020041.D
 Acq: 07 Jun 2022 22:54



Tgt Ion:284 Resp: 177089
 Ion Ratio Lower Upper
 284 100
 142 45.7 27.8 41.8#
 249 33.8 25.7 38.5





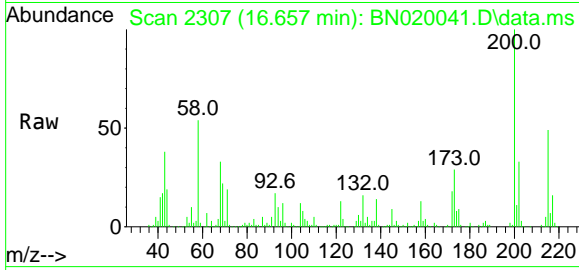
#70
 Atrazine
 Concen: 24.126 ng/u1
 RT: 16.657 min Scan# 21
 Delta R.T. 0.000 min
 Lab File: BN020041.D
 Acq: 07 Jun 2022 22:54

Instrument :

BNA_N

ClientSampleId :

DBTY9MSD

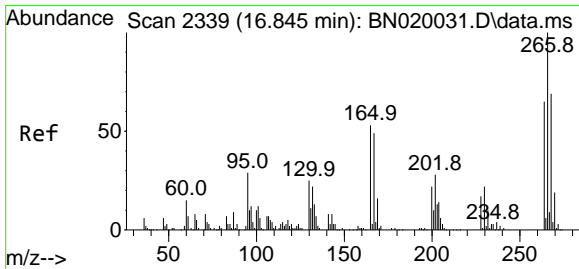
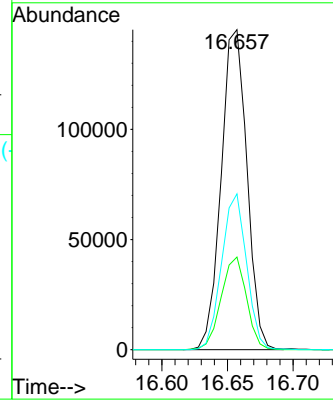
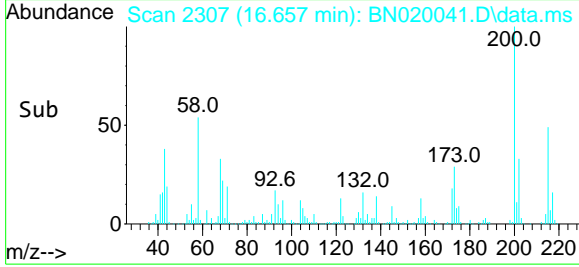


Tgt Ion:200 Resp: 198840
 Ion Ratio Lower Upper
 200 100
 173 28.9 20.5 30.7
 215 48.7 38.9 58.3

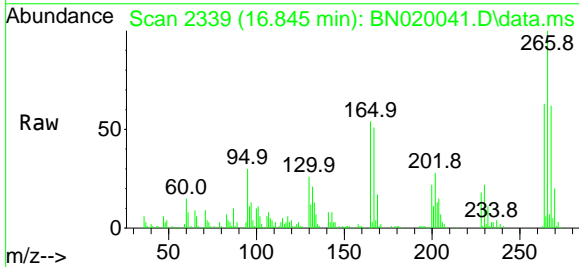
Manual Integrations

APPROVED

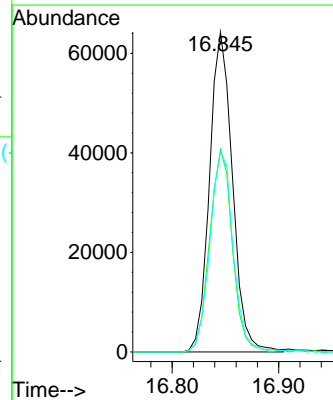
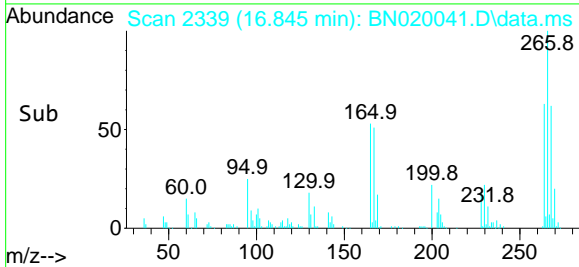
Reviewed By :Jagrut Upadhyay 06/08/2022
 Supervised By :mohammad ahmed 06/09/2022

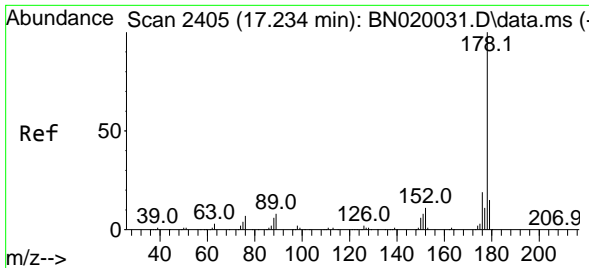


#71
 Pentachlorophenol
 Concen: 18.728 ng/u1
 RT: 16.845 min Scan# 2339
 Delta R.T. 0.000 min
 Lab File: BN020041.D
 Acq: 07 Jun 2022 22:54



Tgt Ion:266 Resp: 96212
 Ion Ratio Lower Upper
 266 100
 264 63.3 50.2 75.2
 268 62.5 49.3 73.9





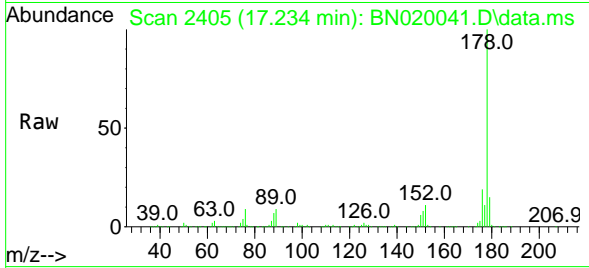
#72
 Phenanthrene
 Concen: 24.172 ng/u1
 RT: 17.234 min Scan# 2405
 Delta R.T. 0.000 min
 Lab File: BN020041.D
 Acq: 07 Jun 2022 22:54

Instrument :

BNA_N

ClientSampleId :

DBTY9MSD

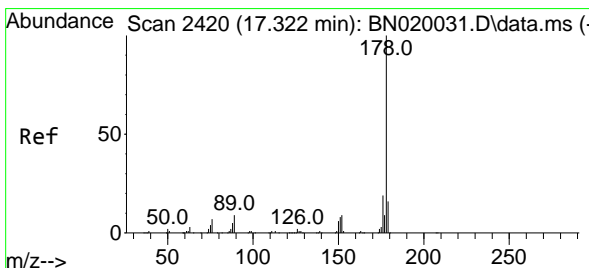
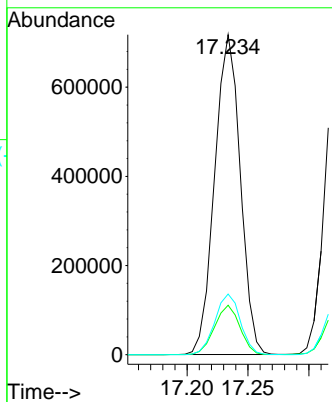
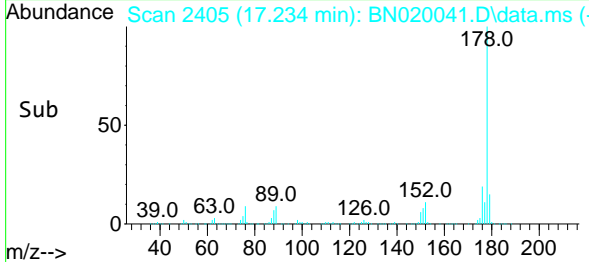


Tgt Ion:178 Resp: 1051092
 Ion Ratio Lower Upper
 178 100
 179 15.5 12.2 18.4
 176 19.0 15.2 22.8

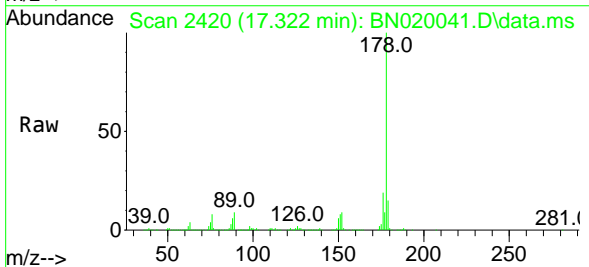
Manual Integrations

APPROVED

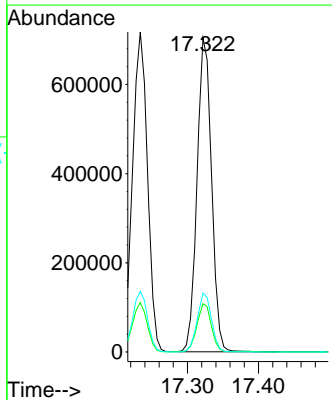
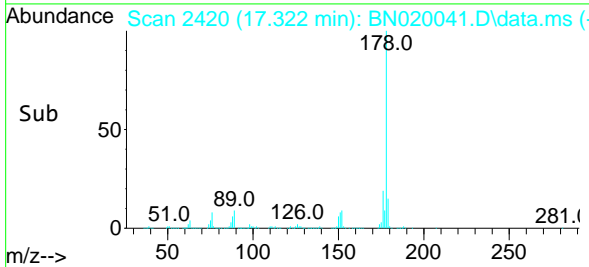
Reviewed By :Jagrut Upadhyay 06/08/2022
 Supervised By :mohammad ahmed 06/09/2022

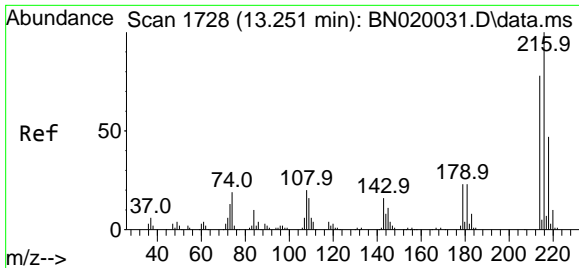


#74
 Anthracene
 Concen: 22.947 ng/u1
 RT: 17.322 min Scan# 2420
 Delta R.T. -0.006 min
 Lab File: BN020041.D
 Acq: 07 Jun 2022 22:54



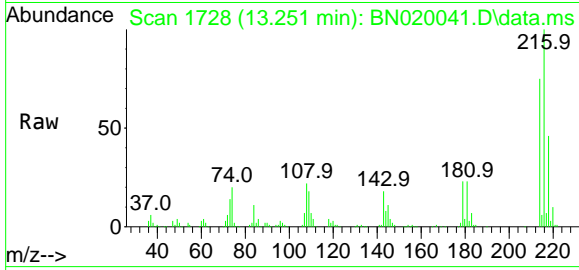
Tgt Ion:178 Resp: 1003341
 Ion Ratio Lower Upper
 178 100
 179 15.4 13.0 19.4
 176 18.7 15.5 23.3





#75
 1,2,3,4-Tetrachlorobenzene
 Concen: 20.581 ng/uL
 RT: 13.251 min Scan# 111
 Delta R.T. 0.000 min
 Lab File: BN020041.D
 Acq: 07 Jun 2022 22:54

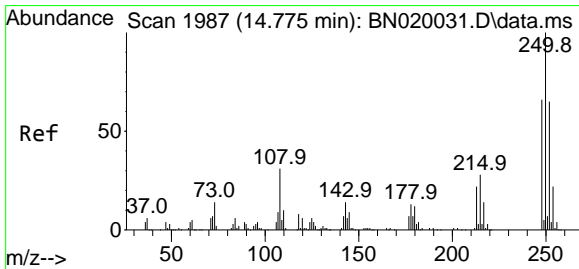
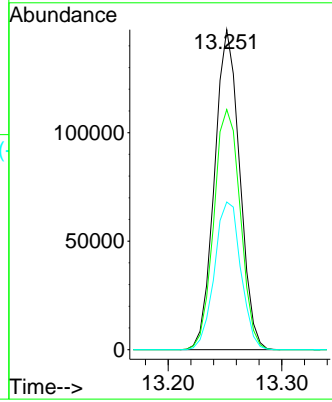
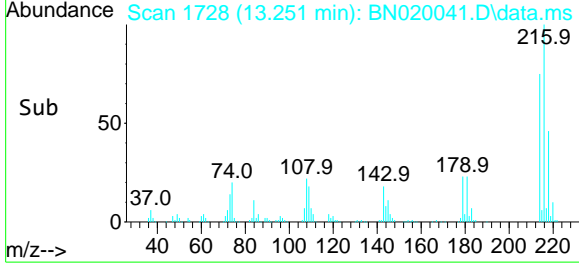
Instrument : BNA_N
 ClientSampleId : DBTY9MSD



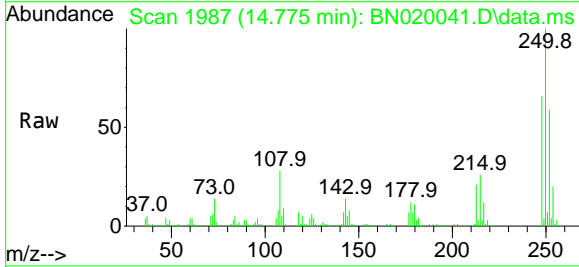
Tgt Ion:216 Resp: 22709
 Ion Ratio Lower Upper
 216 100
 214 75.1 63.2 94.8
 218 46.1 37.9 56.9

Manual Integrations
 APPROVED

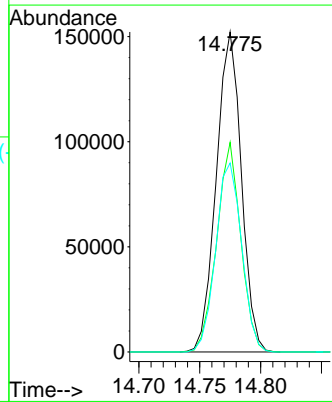
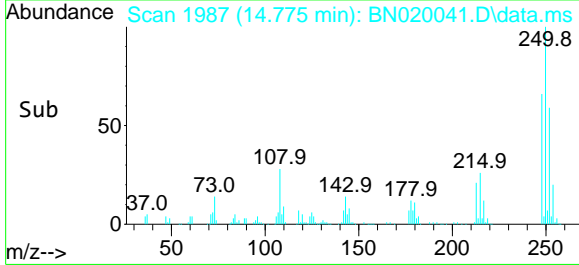
Reviewed By :Jagrut Upadhyay 06/08/2022
 Supervised By :mohammad ahmed 06/09/2022

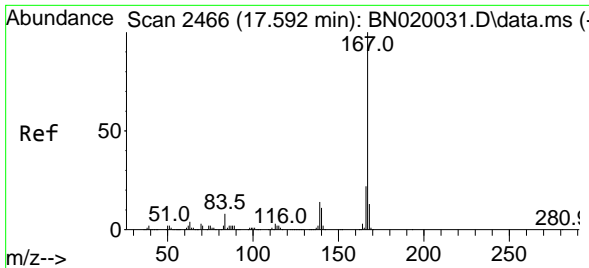


#76
 Pentachlorobenzene
 Concen: 22.352 ng/uL
 RT: 14.775 min Scan# 1987
 Delta R.T. 0.000 min
 Lab File: BN020041.D
 Acq: 07 Jun 2022 22:54



Tgt Ion:250 Resp: 217974
 Ion Ratio Lower Upper
 250 100
 248 65.5 53.0 79.4
 252 59.1 53.4 80.2





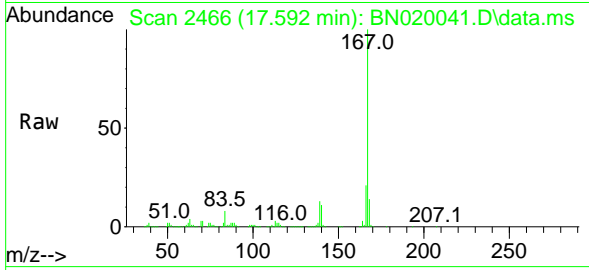
#77
 Carbazole
 Concen: 23.944 ng/uI
 RT: 17.592 min Scan# 2466
 Delta R.T. 0.000 min
 Lab File: BN020041.D
 Acq: 07 Jun 2022 22:54

Instrument :

BNA_N

ClientSampleId :

DBTY9MSD

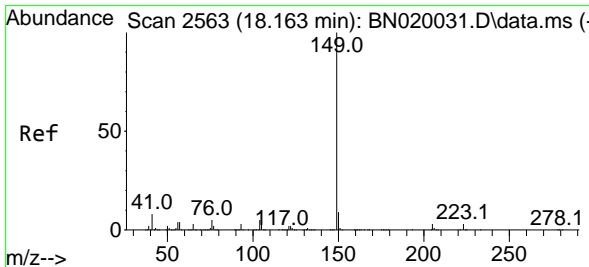
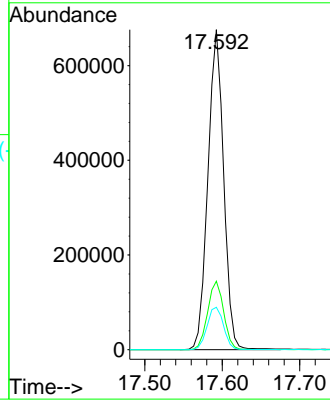
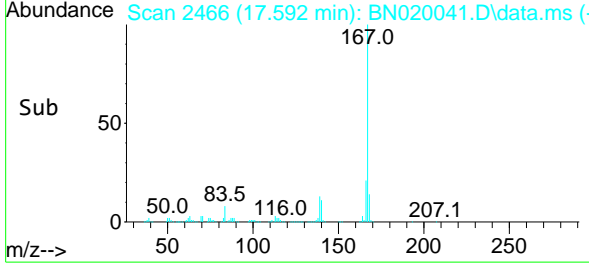


Tgt Ion:167 Resp: 952439
 Ion Ratio Lower Upper
 167 100
 166 21.4 16.1 24.1
 139 13.3 10.2 15.2

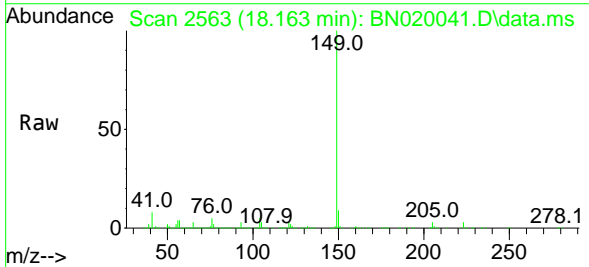
Manual Integrations

APPROVED

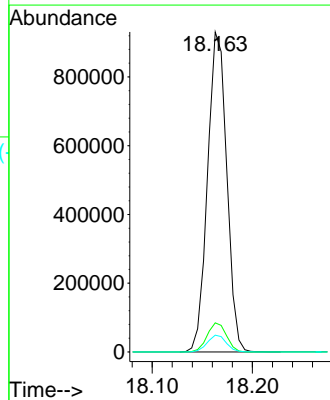
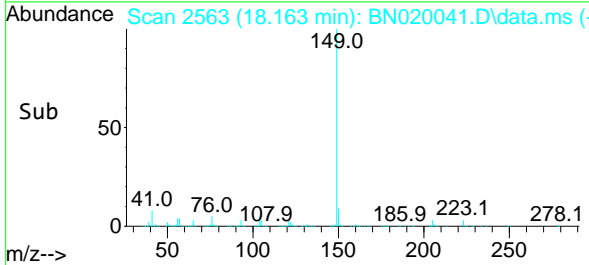
Reviewed By :Jagrut Upadhyay 06/08/2022
 Supervised By :mohammad ahmed 06/09/2022

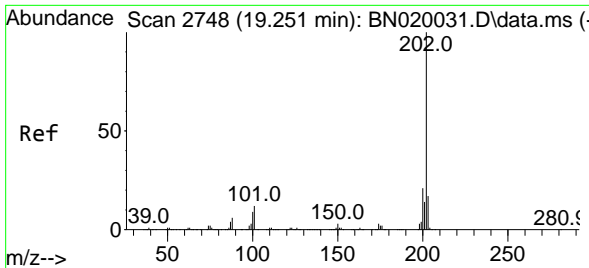


#78
 Di-n-butylphthalate
 Concen: 25.076 ng/uI
 RT: 18.163 min Scan# 2563
 Delta R.T. 0.000 min
 Lab File: BN020041.D
 Acq: 07 Jun 2022 22:54



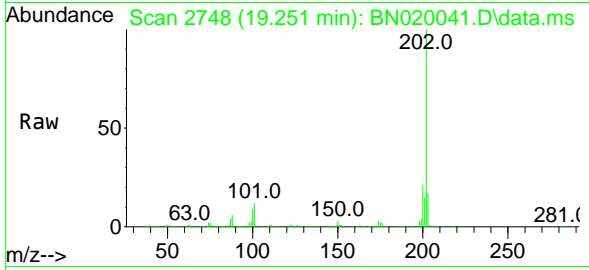
Tgt Ion:149 Resp: 1236895
 Ion Ratio Lower Upper
 149 100
 150 9.1 7.1 10.7
 104 5.3 4.1 6.1





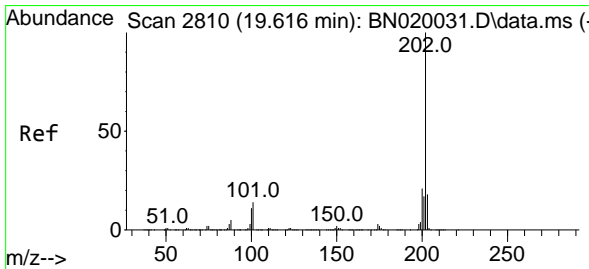
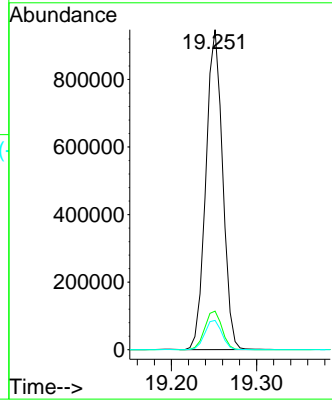
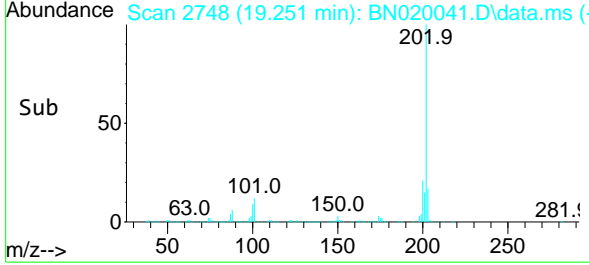
#80
 Fluoranthene
 Concen: 25.315 ng/u1
 RT: 19.251 min Scan# 2748
 Delta R.T. 0.000 min
 Lab File: BN020041.D
 Acq: 07 Jun 2022 22:54

Instrument : BNA_N
 ClientSampleId : DBTY9MSD

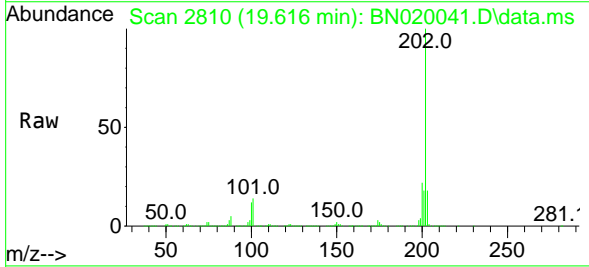


Tgt Ion:202 Resp: 1290140
 Ion Ratio Lower Upper
 202 100
 101 12.1 8.9 13.3
 100 9.1 6.7 10.1

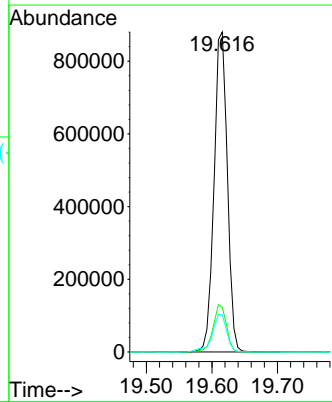
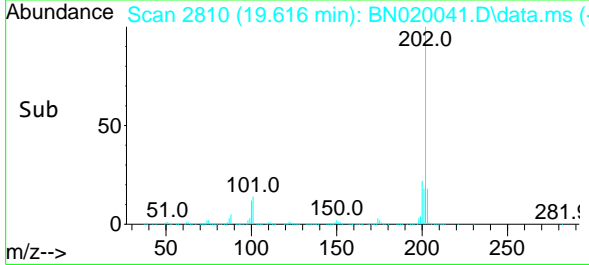
Manual Integrations
APPROVED
 Reviewed By :Jagrut Upadhyay 06/08/2022
 Supervised By :mohammad ahmed 06/09/2022

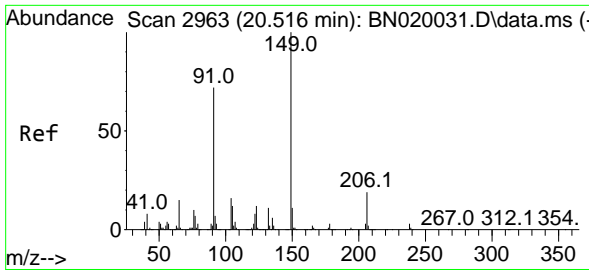


#82
 Pyrene
 Concen: 23.694 ng/u1
 RT: 19.616 min Scan# 2810
 Delta R.T. 0.000 min
 Lab File: BN020041.D
 Acq: 07 Jun 2022 22:54



Tgt Ion:202 Resp: 1238861
 Ion Ratio Lower Upper
 202 100
 101 14.0 9.7 14.5
 100 11.6 8.0 12.0





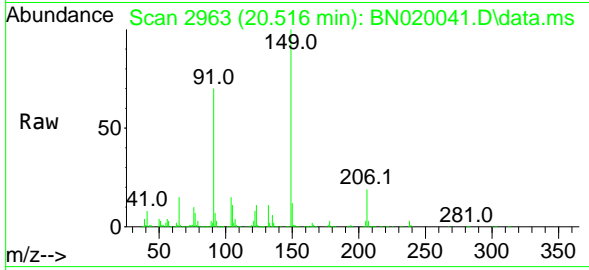
#83
 Butylbenzylphthalate
 Concen: 24.792 ng/ul
 RT: 20.516 min Scan# 2963
 Delta R.T. -0.006 min
 Lab File: BN020041.D
 Acq: 07 Jun 2022 22:54

Instrument :

BNA_N

ClientSampleId :

DBTY9MSD

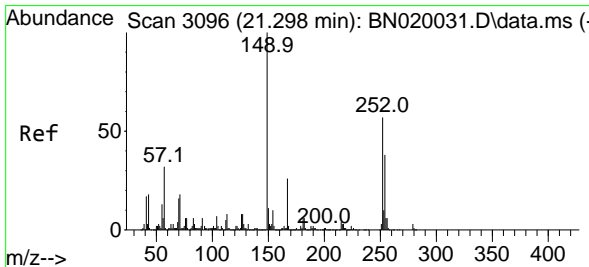
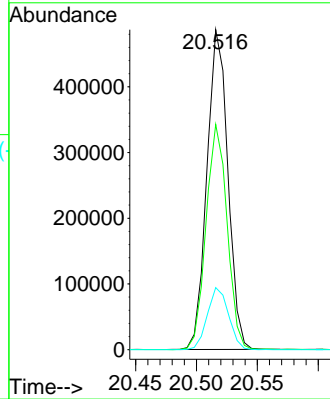
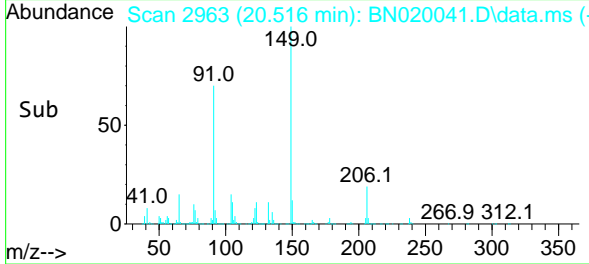


Tgt Ion:149 Resp: 583378
 Ion Ratio Lower Upper
 149 100
 91 70.4 58.8 88.2
 206 19.4 18.1 27.1

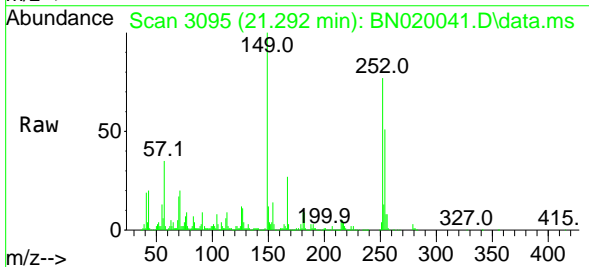
Manual Integrations

APPROVED

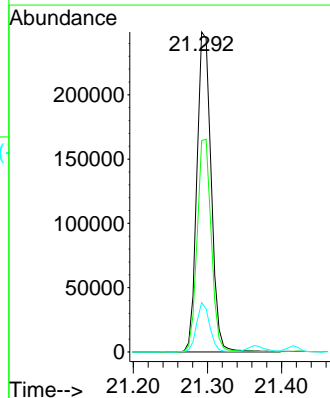
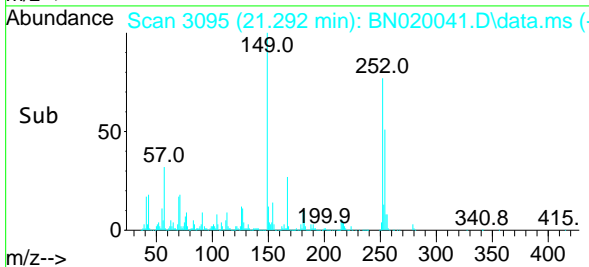
Reviewed By :Jagrut Upadhyay 06/08/2022
 Supervised By :mohammad ahmed 06/09/2022

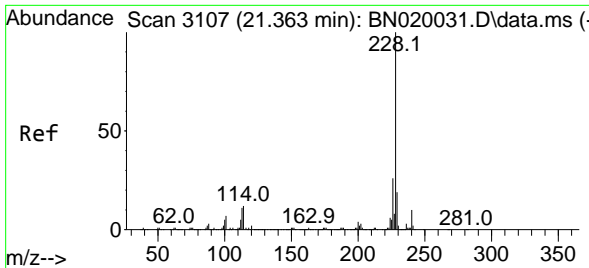


#84
 3,3'-Dichlorobenzidine
 Concen: 22.370 ng/ul
 RT: 21.292 min Scan# 3095
 Delta R.T. -0.006 min
 Lab File: BN020041.D
 Acq: 07 Jun 2022 22:54



Tgt Ion:252 Resp: 332562
 Ion Ratio Lower Upper
 252 100
 254 66.0 50.8 76.2
 126 15.4 8.2 12.4#





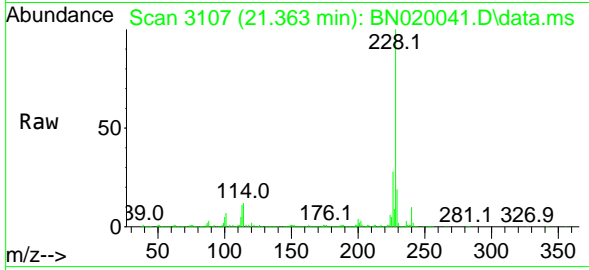
#85
 Benzo(a)anthracene
 Concen: 24.059 ng/u1
 RT: 21.363 min Scan# 3107
 Delta R.T. 0.000 min
 Lab File: BN020041.D
 Acq: 07 Jun 2022 22:54

Instrument :

BNA_N

ClientSampleId :

DBTY9MSD

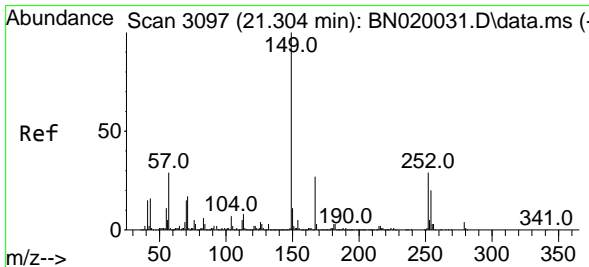
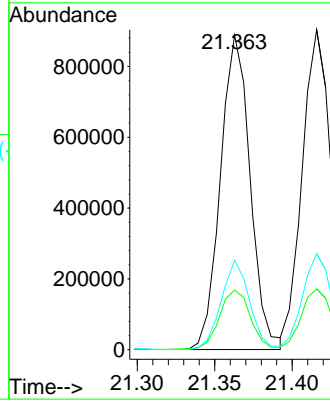
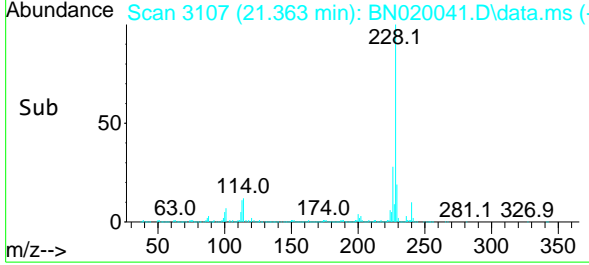


Tgt Ion:228 Resp: 1182528
 Ion Ratio Lower Upper
 228 100
 229 19.0 16.3 24.5
 226 28.4 23.2 34.8

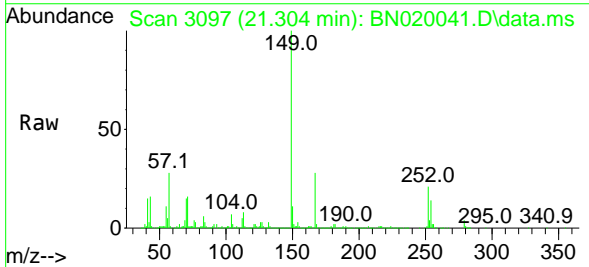
Manual Integrations

APPROVED

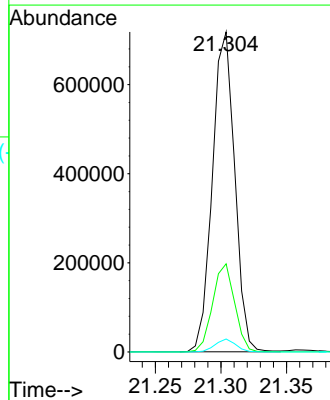
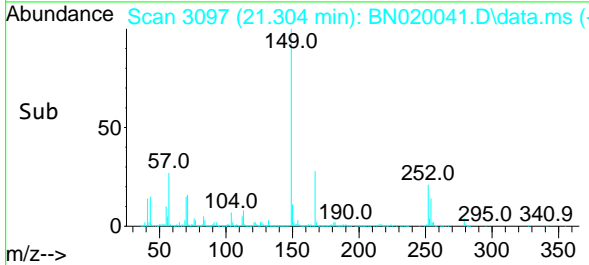
Reviewed By :Jagrut Upadhyay 06/08/2022
 Supervised By :mohammad ahmed 06/09/2022

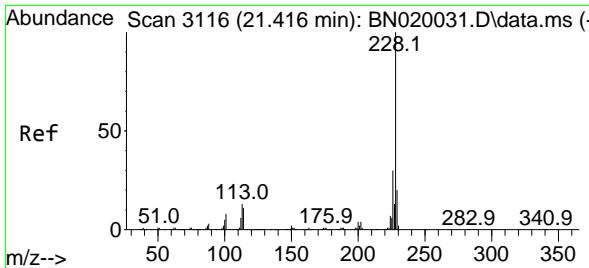


#86
 Bis(2-ethylhexyl)phthalate
 Concen: 25.612 ng/u1
 RT: 21.304 min Scan# 3097
 Delta R.T. 0.000 min
 Lab File: BN020041.D
 Acq: 07 Jun 2022 22:54



Tgt Ion:149 Resp: 850342
 Ion Ratio Lower Upper
 149 100
 167 27.6 22.5 33.7
 279 4.0 3.5 5.3





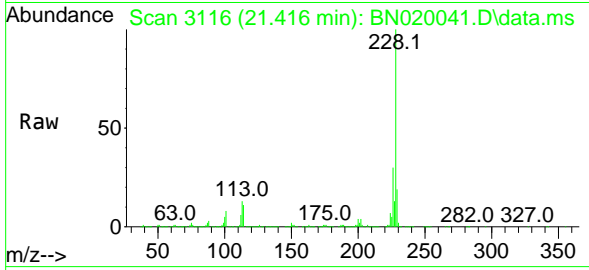
#87
 Chrysene
 Concen: 24.423 ng/u1
 RT: 21.416 min Scan# 3116
 Delta R.T. -0.006 min
 Lab File: BN020041.D
 Acq: 07 Jun 2022 22:54

Instrument :

BNA_N

ClientSampleId :

DBTY9MSD

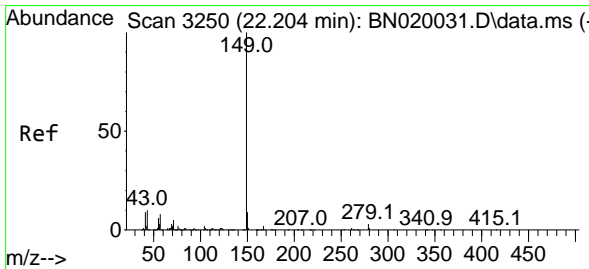
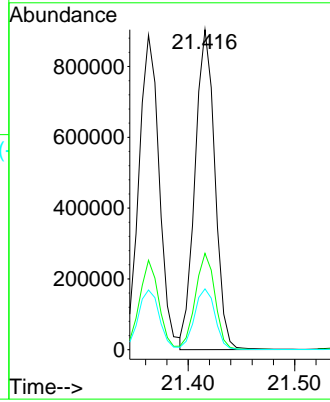
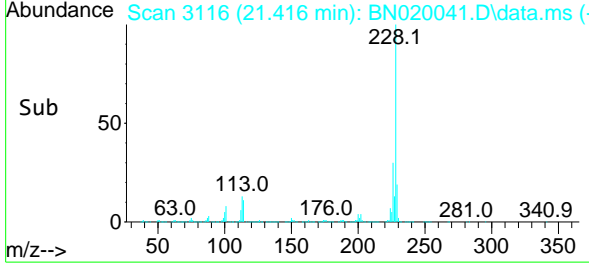


Tgt Ion:228 Resp: 117444
 Ion Ratio Lower Upper
 228 100
 226 30.1 24.2 36.2
 229 19.0 16.2 24.2

Manual Integrations

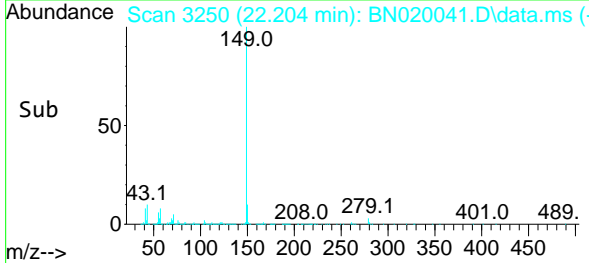
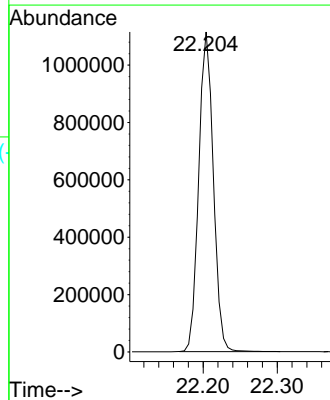
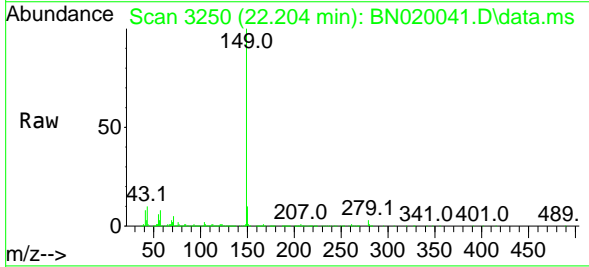
APPROVED

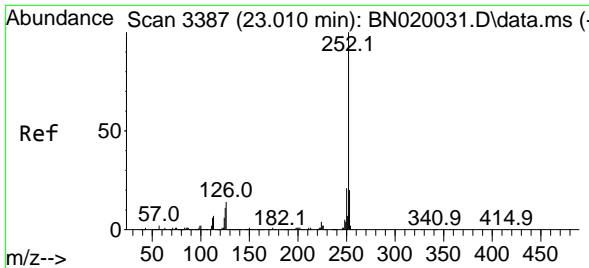
Reviewed By :Jagrut Upadhyay 06/08/2022
 Supervised By :mohammad ahmed 06/09/2022



#89
 Di-n-octyl phthalate
 Concen: 23.481 ng/u1
 RT: 22.204 min Scan# 3250
 Delta R.T. -0.006 min
 Lab File: BN020041.D
 Acq: 07 Jun 2022 22:54

Tgt Ion:149 Resp: 1523012





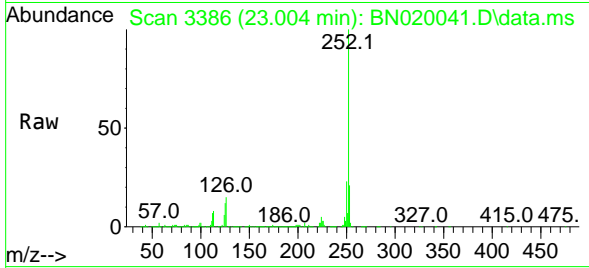
#90
 Benzo(b)fluoranthene
 Concen: 25.318 ng/ul m
 RT: 23.004 min Scan# 3387
 Delta R.T. 0.000 min
 Lab File: BN020041.D
 Acq: 07 Jun 2022 22:54

Instrument :

BNA_N

ClientSampleId :

DBTY9MSD

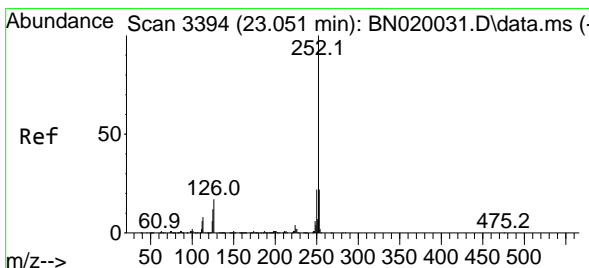
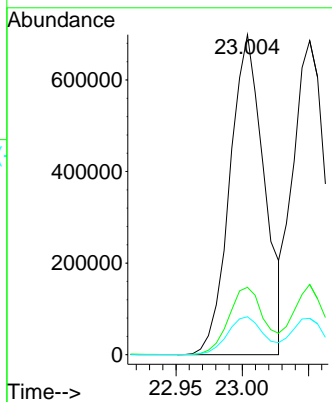
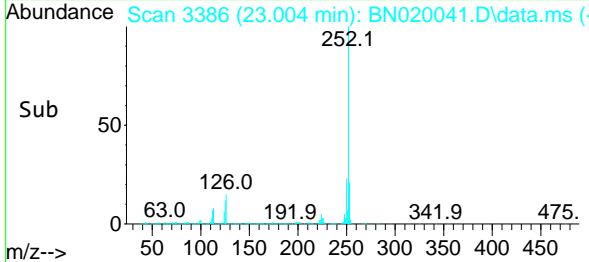


Tgt Ion:252 Resp: 1266310
 Ion Ratio Lower Upper
 252 100
 253 21.1 16.5 24.7
 125 11.9 7.8 11.8

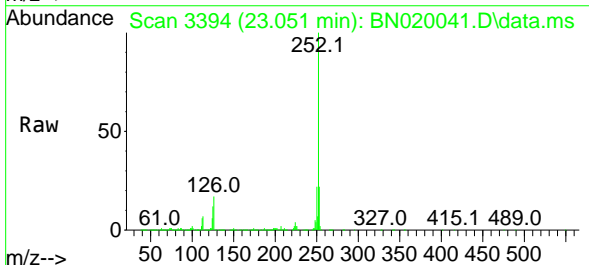
Manual Integrations

APPROVED

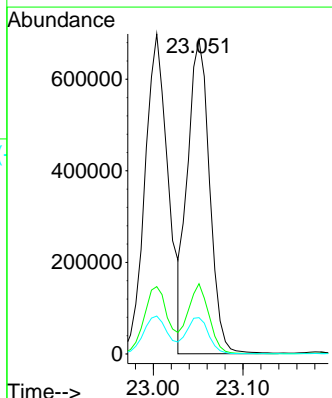
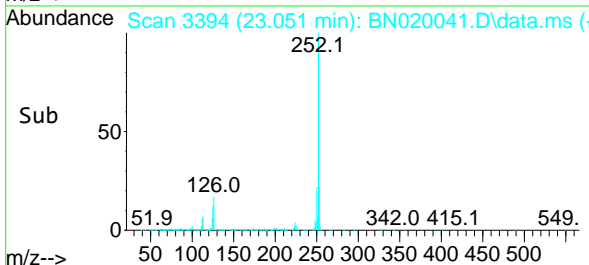
Reviewed By :Jagrut Upadhyay 06/08/2022
 Supervised By :mohammad ahmed 06/09/2022

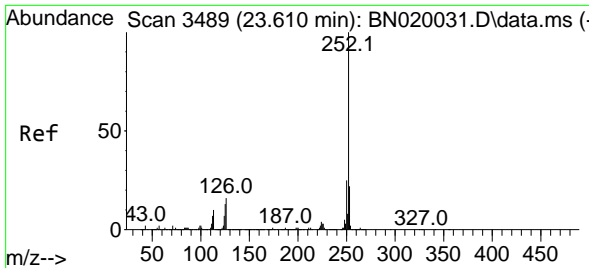


#91
 Benzo(k)fluoranthene
 Concen: 24.585 ng/ul
 RT: 23.051 min Scan# 3394
 Delta R.T. 0.000 min
 Lab File: BN020041.D
 Acq: 07 Jun 2022 22:54



Tgt Ion:252 Resp: 1170526
 Ion Ratio Lower Upper
 252 100
 253 22.4 18.2 27.4
 125 11.5 8.2 12.4





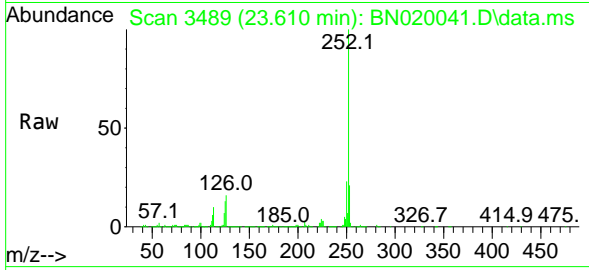
#93
 Benzo(a)pyrene
 Concen: 21.490 ng/u1
 RT: 23.610 min Scan# 3489
 Delta R.T. 0.000 min
 Lab File: BN020041.D
 Acq: 07 Jun 2022 22:54

Instrument :

BNA_N

ClientSampleId :

DBTY9MSD

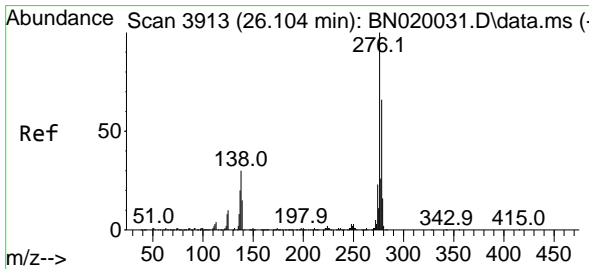
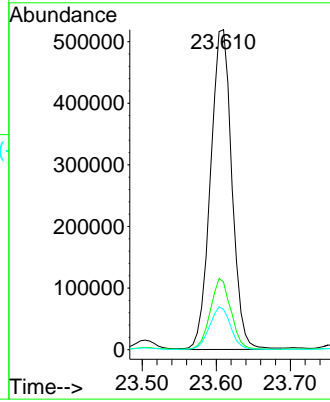
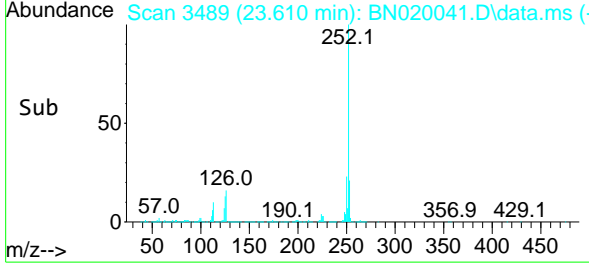


Tgt Ion:252 Resp: 1040414
 Ion Ratio Lower Upper
 252 100
 253 21.1 18.7 28.1
 125 12.6 9.2 13.8

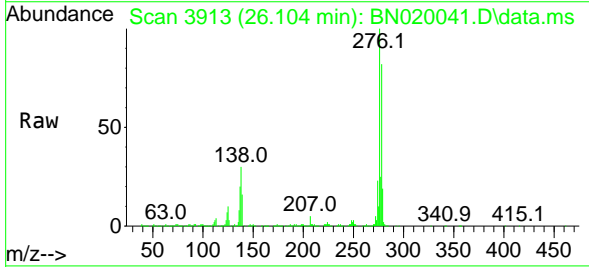
Manual Integrations

APPROVED

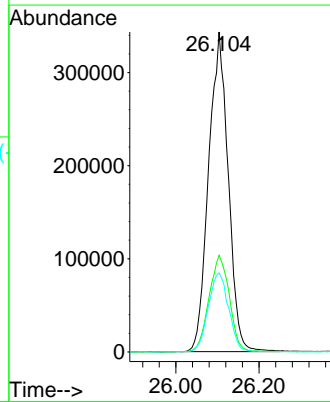
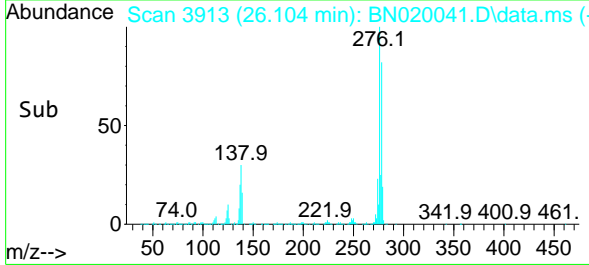
Reviewed By :Jagrut Upadhyay 06/08/2022
 Supervised By :mohammad ahmed 06/09/2022

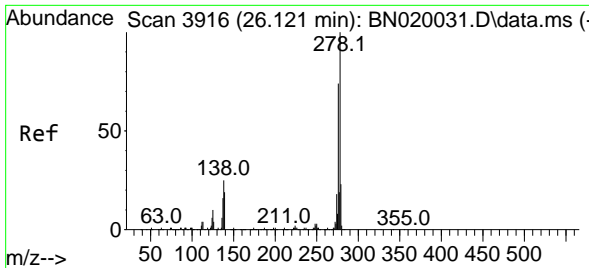


#94
 Indeno(1,2,3-cd)pyrene
 Concen: 22.580 ng/u1
 RT: 26.104 min Scan# 3913
 Delta R.T. 0.006 min
 Lab File: BN020041.D
 Acq: 07 Jun 2022 22:54



Tgt Ion:276 Resp: 1124742
 Ion Ratio Lower Upper
 276 100
 138 30.2 19.5 29.3#
 277 24.7 21.4 32.0





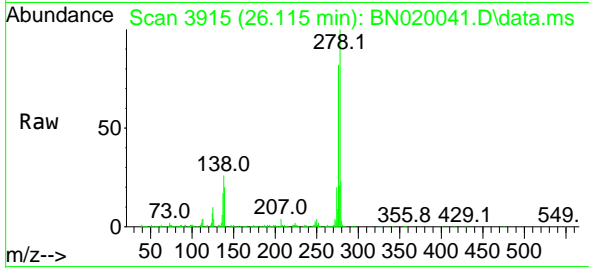
#95
 Dibenzo(a,h)anthracene
 Concen: 23.715 ng/ul
 RT: 26.115 min Scan# 3915
 Delta R.T. -0.006 min
 Lab File: BN020041.D
 Acq: 07 Jun 2022 22:54

Instrument :

BNA_N

ClientSampleId :

DBTY9MSD

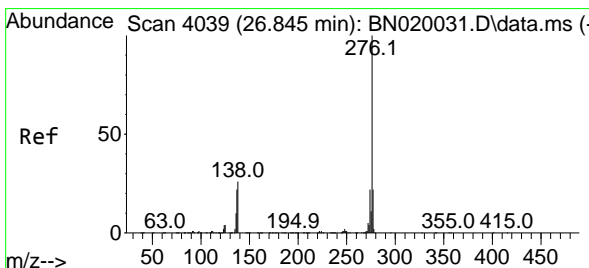
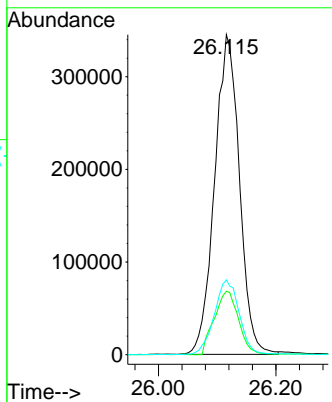
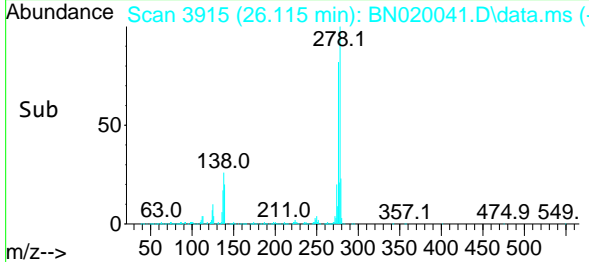


Tgt Ion:278 Resp: 1008980
 Ion Ratio Lower Upper
 278 100
 139 19.8 13.8 20.8
 279 23.4 18.3 27.5

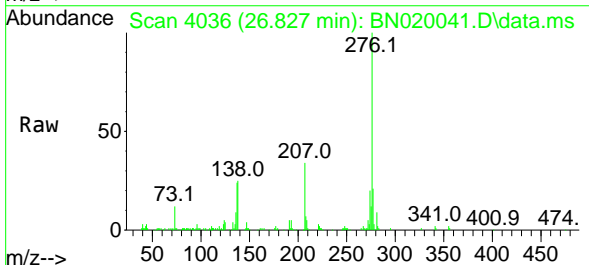
Manual Integrations

APPROVED

Reviewed By :Jagrut Upadhyay 06/08/2022
 Supervised By :mohammad ahmed 06/09/2022



#96
 Benzo(g,h,i)perylene
 Concen: 3.458 ng/ul
 RT: 26.827 min Scan# 4036
 Delta R.T. -0.017 min
 Lab File: BN020041.D
 Acq: 07 Jun 2022 22:54



Tgt Ion:276 Resp: 145459
 Ion Ratio Lower Upper
 276 100
 138 24.7 17.0 25.6
 277 20.8 17.8 26.6

