

Data Path : Z:\svoasrv\HPCHEM1\BNA\_N\Data\BN060722\  
 Data File : BN020044.D  
 Acq On : 08 Jun 2022 00:43  
 Operator : CG/JU  
 Sample : N3171-06  
 Misc :  
 ALS Vial : 20 Sample Multiplier: 1

Instrument :  
 BNA\_N  
 ClientSampleId :  
 DBTZ1

Integration Parameters: LSCINT.P

Integrator: RTE  
 Smoothing : OFF Filtering: 5  
 Sampling : 1 Min Area: 0.1 % of largest Peak  
 Start Thrs: 0.2 Max Peaks: 100  
 Stop Thrs : 0 Peak Location: TOP

If leading or trailing edge < 100 prefer < Baseline drop else tangent >  
 Peak separation: 5

Method : Z:\svoasrv\HPCHEM1\BNA\_N\Methods\SFAM-EPA-BN060622.M  
 Title : SVOA CALIBRATION

Signal : TIC: BN020044.D\data.ms

peak #	R.T. min	first scan	max scan	last scan	PK TY	peak height	corr. area	corr. % max.	% of total
1	3.217	19	22	24	rVB3	6530	6868	0.23%	0.020%
2	3.281	30	33	39	rVB	21813	28913	0.98%	0.084%
3	3.687	98	102	121	rBV	339572	565300	19.16%	1.639%
4	4.028	156	160	166	rVB	11196	16363	0.55%	0.047%
5	4.581	250	254	258	rBV4	2325	3933	0.13%	0.011%
6	4.940	310	315	320	rVB4	4516	8939	0.30%	0.026%
7	6.987	656	663	676	rBV	425889	706378	23.94%	2.048%
8	7.152	679	691	700	rBV	335033	564825	19.14%	1.638%
9	7.222	700	703	712	rVB	11541	19217	0.65%	0.056%
10	7.352	718	725	734	rBV	433767	727024	24.64%	2.108%
11	7.822	797	805	813	rBV	478733	788620	26.73%	2.287%
12	7.887	813	816	822	rVB3	3712	6854	0.23%	0.020%
13	8.193	864	868	874	rBV	13554	22553	0.76%	0.065%
14	8.522	917	924	930	rBV	564888	940545	31.88%	2.727%
15	8.581	930	934	943	rVV	180147	295978	10.03%	0.858%
16	8.646	943	945	949	rVB3	2565	3156	0.11%	0.009%
17	8.969	993	1000	1012	rBV	420455	731275	24.78%	2.120%
18	9.146	1026	1030	1034	rBV6	2659	3768	0.13%	0.011%
19	9.693	1116	1123	1140	rBV	362540	608853	20.63%	1.765%
20	10.234	1207	1215	1229	rBV	537674	922536	31.27%	2.675%
21	10.610	1270	1279	1285	rBV	722039	1254611	42.52%	3.638%
22	10.663	1285	1288	1294	rVB2	27062	41970	1.42%	0.122%
23	10.746	1294	1302	1313	rBV	494527	900401	30.52%	2.611%
24	12.104	1528	1533	1538	rVV3	6496	10042	0.34%	0.029%
25	12.198	1541	1549	1555	rBV2	9171	15559	0.53%	0.045%
26	12.275	1558	1562	1568	rBV5	3179	5494	0.19%	0.016%
27	12.493	1594	1599	1605	rVB3	4602	7818	0.26%	0.023%
28	13.293	1731	1735	1741	rBV5	7083	11277	0.38%	0.033%
29	13.857	1825	1831	1840	rBV	1009863	1472849	49.92%	4.271%
30	14.140	1872	1879	1892	rBV	1167034	1732856	58.73%	5.025%
31	14.245	1892	1897	1906	rVB2	24048	40100	1.36%	0.116%
32	14.363	1914	1917	1923	rVB5	2287	3384	0.11%	0.010%
33	14.451	1923	1932	1939	rBV	1145792	1751303	59.35%	5.078%
34	14.510	1939	1942	1947	rVB2	9460	14316	0.49%	0.042%
35	14.640	1957	1964	1981	rBV	458592	707900	23.99%	2.053%
36	14.869	1997	2003	2007	rVB4	8069	14145	0.48%	0.041%

Data Path : Z:\svoasrv\HPCHEM1\BNA\_N\Data\BN060722\  
 Data File : BN020044.D  
 Acq On : 08 Jun 2022 00:43  
 Operator : CG/JU  
 Sample : N3171-06  
 Misc :  
 ALS Vial : 20 Sample Multiplier: 1

Instrument :  
 BNA\_N  
 ClientSampleId :  
 DBTZ1

Integration Parameters: LSCINT.P

Integrator: RTE  
 Smoothing : OFF Filtering: 5  
 Sampling : 1 Min Area: 0.1 % of largest Peak  
 Start Thrs: 0.2 Max Peaks: 100  
 Stop Thrs : 0 Peak Location: TOP

If leading or trailing edge < 100 prefer < Baseline drop else tangent >  
 Peak separation: 5

Method : Z:\svoasrv\HPCHEM1\BNA\_N\Methods\SFAM-EPA-BN060622.M  
 Title : SVOA CALIBRATION

37	15.257	2066	2069	2075	rBV4	2611	4351	0.15%	0.013%
38	15.440	2091	2100	2107	rBV	1487901	2173403	73.66%	6.302%
39	15.557	2114	2120	2133	rVV	399362	560462	18.99%	1.625%
40	15.681	2135	2141	2147	rVB2	16552	24072	0.82%	0.070%
41	16.175	2221	2225	2229	rVV6	3184	4700	0.16%	0.014%
42	16.228	2229	2234	2239	rVB5	5490	8355	0.28%	0.024%
43	16.598	2293	2297	2300	rBV5	4021	5201	0.18%	0.015%
44	16.975	2355	2361	2365	rBV5	5847	10743	0.36%	0.031%
45	17.016	2365	2368	2372	rVB5	2190	3357	0.11%	0.010%
46	17.192	2391	2398	2404	rBV	1397063	2088096	70.77%	6.055%
47	17.286	2407	2414	2426	rVV2	1594012	2358071	79.92%	6.837%
48	17.381	2426	2430	2436	rVB4	22176	34798	1.18%	0.101%
49	17.586	2457	2465	2470	rBV2	6623	11897	0.40%	0.034%
50	17.675	2477	2480	2483	rBV2	3007	4465	0.15%	0.013%
51	17.875	2509	2514	2519	rVB6	5543	8159	0.28%	0.024%
52	17.963	2525	2529	2539	rBV6	12091	26163	0.89%	0.076%
53	18.092	2546	2551	2559	rBV	165890	248697	8.43%	0.721%
54	18.404	2603	2604	2610	rVB5	2206	2999	0.10%	0.009%
55	18.763	2662	2665	2670	rVB6	2859	3855	0.13%	0.011%
56	19.151	2726	2731	2735	rBV2	18869	26363	0.89%	0.076%
57	19.222	2738	2743	2746	rBV	22379	35555	1.20%	0.103%
58	19.251	2746	2748	2754	rVB6	13628	19854	0.67%	0.058%
59	19.375	2764	2769	2779	rBV	62565	101023	3.42%	0.293%
60	19.522	2791	2794	2798	rBV2	6247	6533	0.22%	0.019%
61	19.580	2798	2804	2812	rBV2	1977780	2734892	92.69%	7.930%
62	20.145	2897	2900	2905	rVB4	7503	8575	0.29%	0.025%
63	20.592	2974	2976	2981	rVV3	13577	13418	0.45%	0.039%
64	20.639	2981	2984	2987	rVB3	11512	11840	0.40%	0.034%
65	20.745	3000	3002	3005	rBV2	3854	3929	0.13%	0.011%
66	21.098	3057	3062	3073	rBV2	137190	248063	8.41%	0.719%
67	21.374	3103	3109	3122	rBV	1783309	2447030	82.93%	7.095%
68	21.545	3134	3138	3142	rVB3	21898	27729	0.94%	0.080%
69	21.992	3211	3214	3224	rVB4	28762	47354	1.60%	0.137%
70	22.474	3292	3296	3303	rBV2	35402	55668	1.89%	0.161%
71	22.610	3315	3319	3325	rVB	198880	267316	9.06%	0.775%
72	23.010	3383	3387	3393	rBV	80126	130676	4.43%	0.379%
73	23.557	3472	3480	3487	rBV2	1481262	2950644	100.00%	8.556%
74	23.710	3498	3506	3524	rVB2	1231299	2512648	85.16%	7.286%
75	24.310	3604	3608	3614	rVB2	71818	138052	4.68%	0.400%
76	25.115	3739	3745	3753	rVB3	61301	162457	5.51%	0.471%

Data Path : Z:\svoasrv\HPCHEM1\BNA\_N\Data\BN060722\  
Data File : BN020044.D  
Acq On : 08 Jun 2022 00:43  
Operator : CG/JU  
Sample : N3171-06  
Misc :  
ALS Vial : 20 Sample Multiplier: 1

Instrument :  
BNA\_N  
ClientSampleId :  
DBTZ1

Integration Parameters: LSCINT.P  
Integrator: RTE  
Smoothing : OFF Filtering: 5  
Sampling : 1 Min Area: 0.1 % of largest Peak  
Start Thrs: 0.2 Max Peaks: 100  
Stop Thrs : 0 Peak Location: TOP

If leading or trailing edge < 100 prefer < Baseline drop else tangent >  
Peak separation: 5

Method : Z:\svoasrv\HPCHEM1\BNA\_N\Methods\SFAM-EPA-BN060622.M  
Title : SVOA CALIBRATION

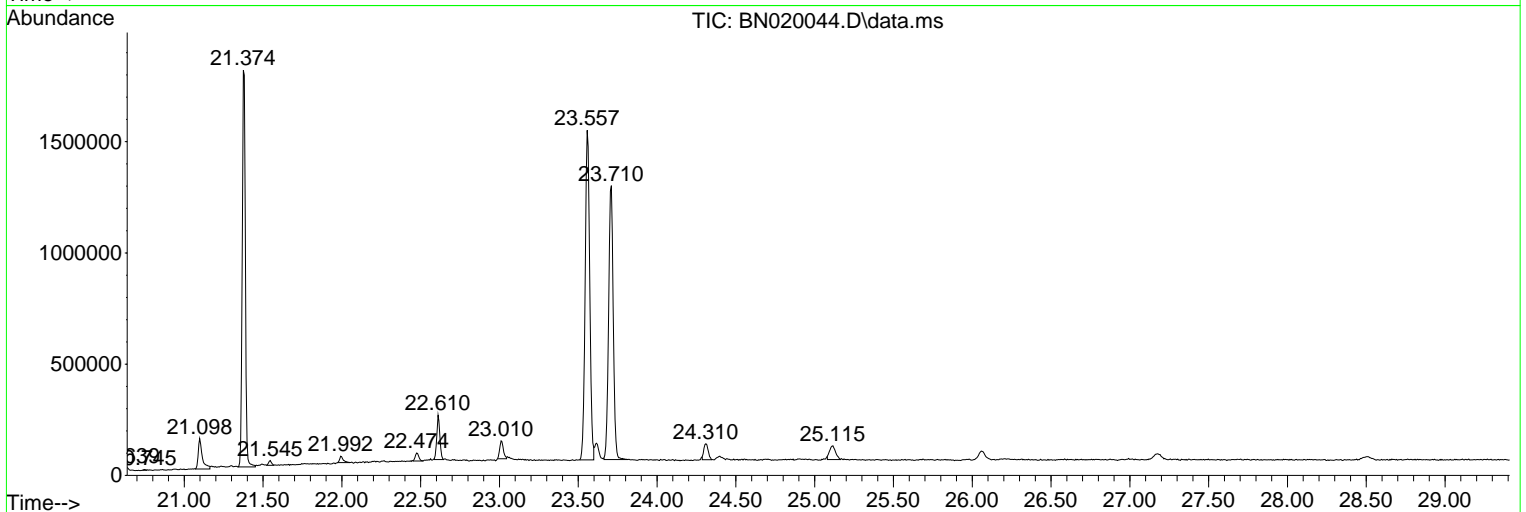
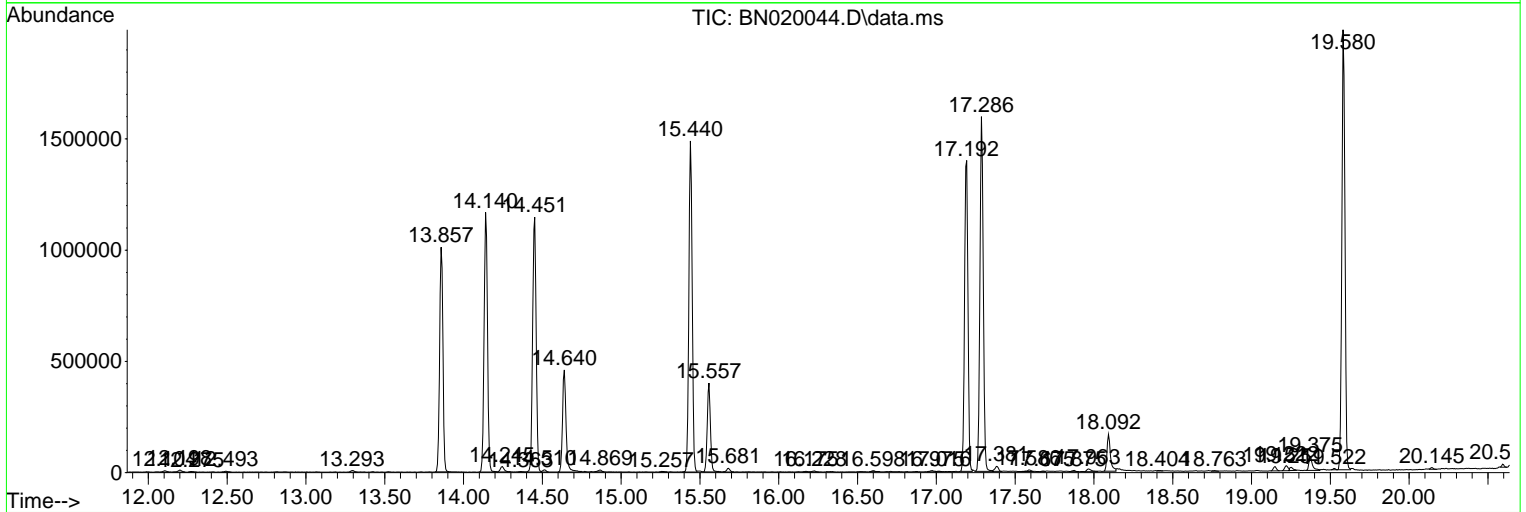
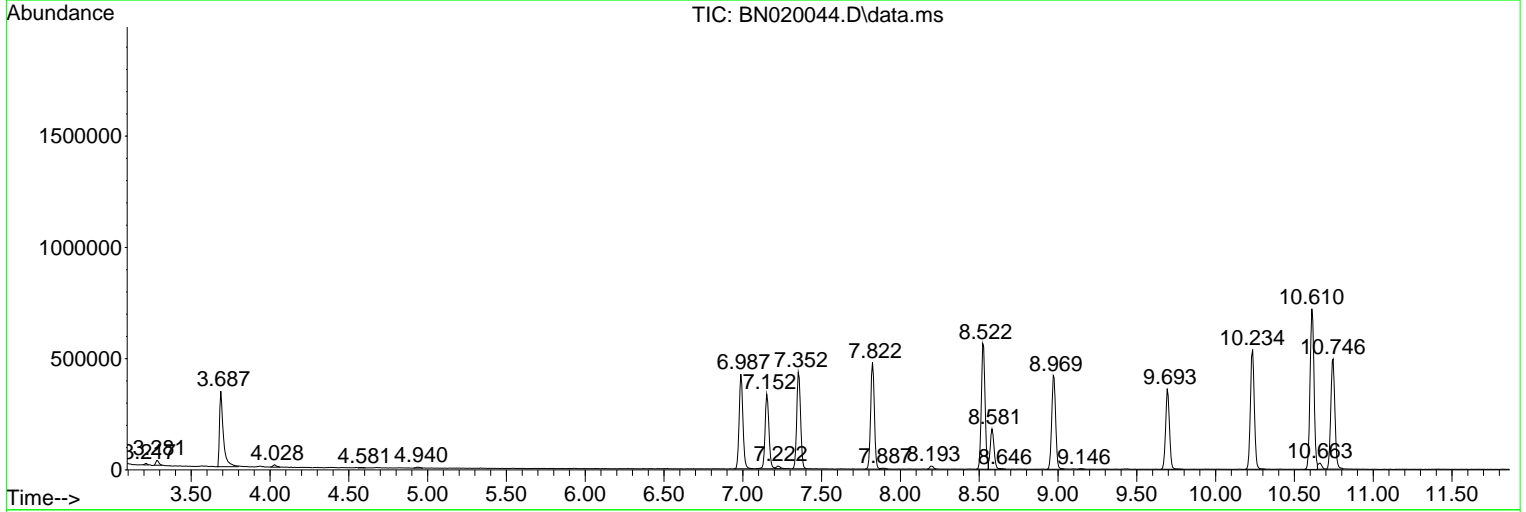
Sum of corrected areas: 34487386

Data Path : Z:\svoasrv\HPCHEM1\BNA\_N\Data\BN060722\  
 Data File : BN020044.D  
 Acq On : 08 Jun 2022 00:43  
 Operator : CG/JU  
 Sample : N3171-06  
 Misc :  
 ALS Vial : 20 Sample Multiplier: 1

Instrument :  
 BNA\_N  
 ClientSampleId :  
 DBTZ1

Quant Method : Z:\svoasrv\HPCHEM1\BNA\_N\Methods\SFAM-EPA-BN060622.M  
 Quant Title : SVOA CALIBRATION

TIC Library : C:\Database\NIST20.L  
 TIC Integration Parameters: LSCINT.P



Data Path : Z:\svoasrv\HPCHEM1\BNA\_N\Data\BN060722\  
 Data File : BN020044.D  
 Acq On : 08 Jun 2022 00:43  
 Operator : CG/JU  
 Sample : N3171-06  
 Misc :  
 ALS Vial : 20 Sample Multiplier: 1

Instrument :  
 BNA\_N  
 ClientSampleId :  
 DBTZ1

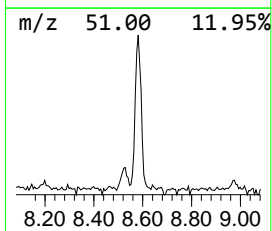
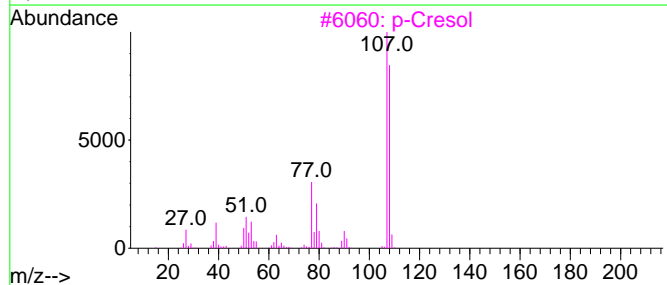
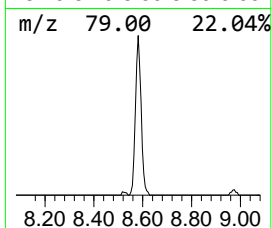
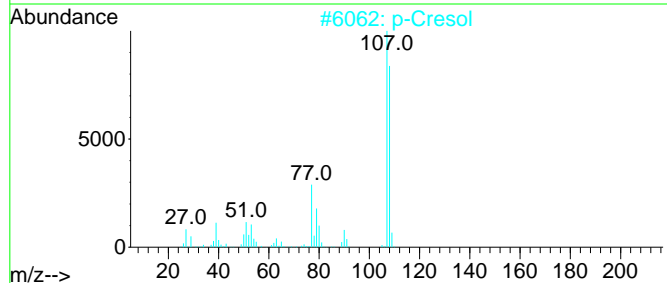
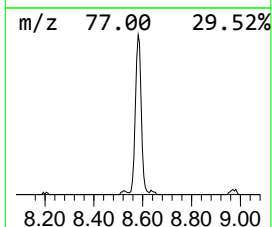
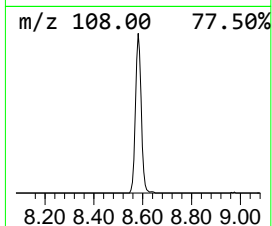
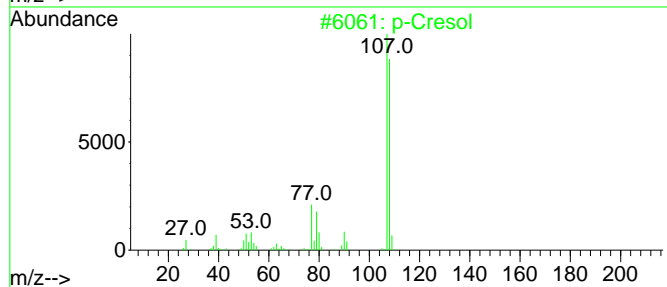
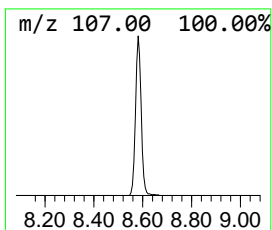
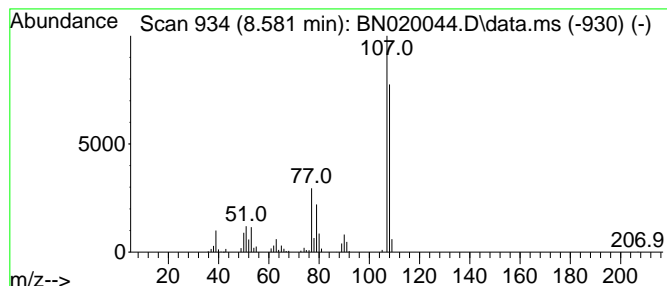
Quant Method : Z:\svoasrv\HPCHEM1\BNA\_N\Methods\SFAM-EPA-BN060622.M  
 Quant Title : SVOA CALIBRATION

TIC Library : C:\Database\NIST20.L  
 TIC Integration Parameters: LSCINT.P

\*\*\*\*\*  
 Peak Number 1 p-Cresol Concentration Rank 1

R.T.	EstConc	Area	Relative to ISTD	R.T.
8.581	7.51 ng/ul	295978	1,4-Dichlorobenzene-d4	7.822

Hit#	of	5	Tentative ID	MW	MolForm	CAS#	Qual
1			p-Cresol	108	C7H8O	000106-44-5	97
2			p-Cresol	108	C7H8O	000106-44-5	97
3			p-Cresol	108	C7H8O	000106-44-5	96
4			Phenol, 3-methyl-	108	C7H8O	000108-39-4	93
5			Phenol, 3-methyl-	108	C7H8O	000108-39-4	93



Data Path : Z:\svoasrv\HPCHEM1\BNA\_N\Data\BN060722\  
 Data File : BN020044.D  
 Acq On : 08 Jun 2022 00:43  
 Operator : CG/JU  
 Sample : N3171-06  
 Misc :  
 ALS Vial : 20 Sample Multiplier: 1

Instrument :  
 BNA\_N  
 ClientSampleId :  
 DBTZ1

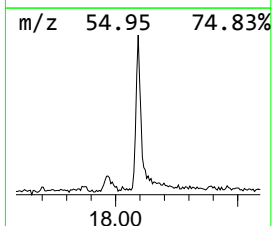
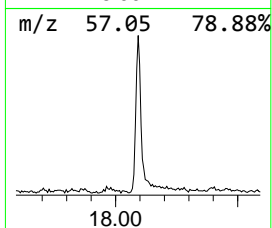
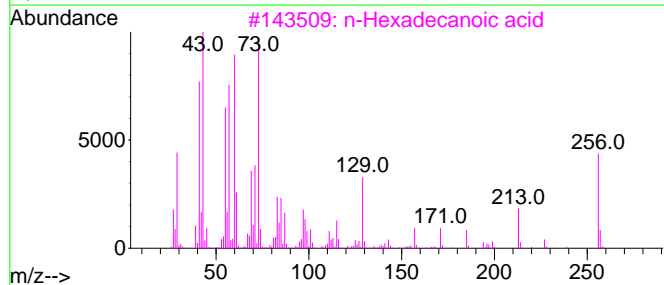
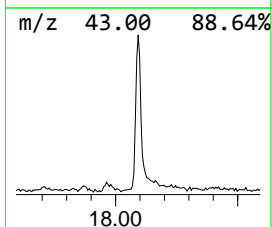
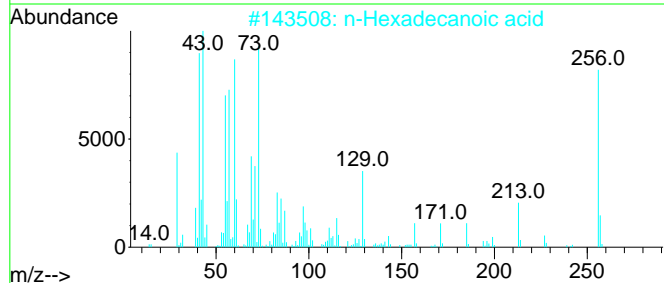
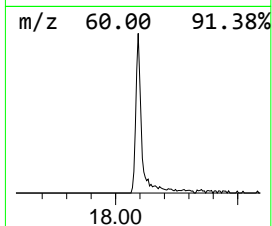
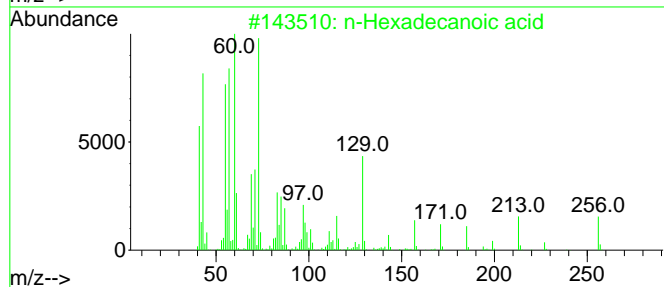
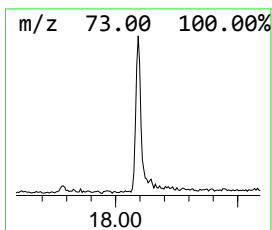
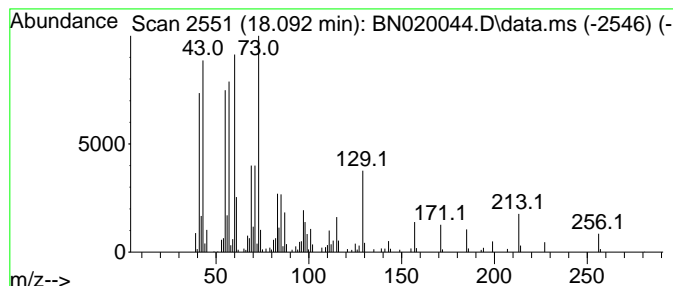
Quant Method : Z:\svoasrv\HPCHEM1\BNA\_N\Methods\SFAM-EPA-BN060622.M  
 Quant Title : SVOA CALIBRATION

TIC Library : C:\Database\NIST20.L  
 TIC Integration Parameters: LSCINT.P

\*\*\*\*\*  
 Peak Number 2 n-Hexadecanoic acid Concentration Rank 2

R.T.	EstConc	Area	Relative to ISTD	R.T.
18.092	2.38 ng/ul	248697	Phenanthrene-d10	17.192

Hit#	of	5	Tentative ID	MW	MolForm	CAS#	Qual
1			n-Hexadecanoic acid	256	C16H32O2	000057-10-3	99
2			n-Hexadecanoic acid	256	C16H32O2	000057-10-3	99
3			n-Hexadecanoic acid	256	C16H32O2	000057-10-3	98
4			n-Hexadecanoic acid	256	C16H32O2	000057-10-3	96
5			Tridecanoic acid	214	C13H26O2	000638-53-9	95



Data Path : Z:\svoasrv\HPCHEM1\BNA\_N\Data\BN060722\  
 Data File : BN020044.D  
 Acq On : 08 Jun 2022 00:43  
 Operator : CG/JU  
 Sample : N3171-06  
 Misc :  
 ALS Vial : 20 Sample Multiplier: 1

Instrument :  
 BNA\_N  
 ClientSampleId :  
 DBTZ1

Quant Method : Z:\svoasrv\HPCHEM1\BNA\_N\Methods\SFAM-EPA-BN060622.M  
 Quant Title : SVOA CALIBRATION

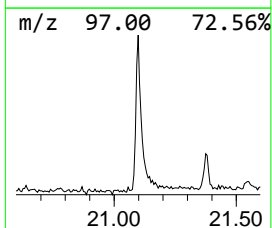
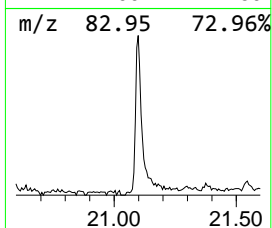
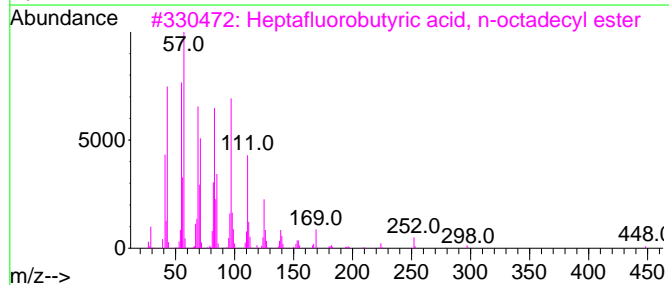
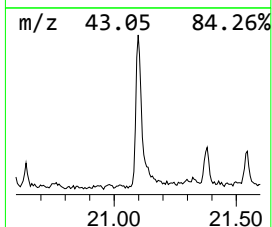
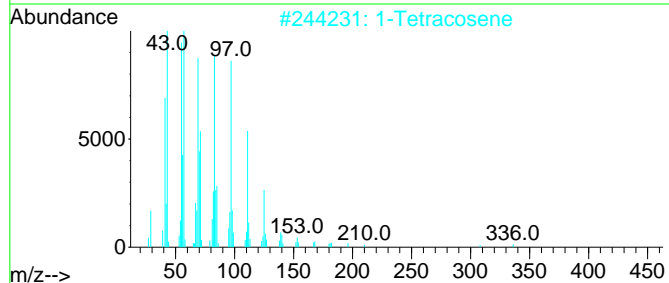
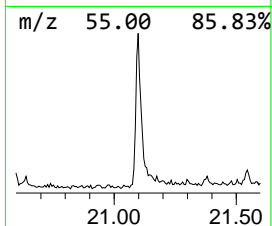
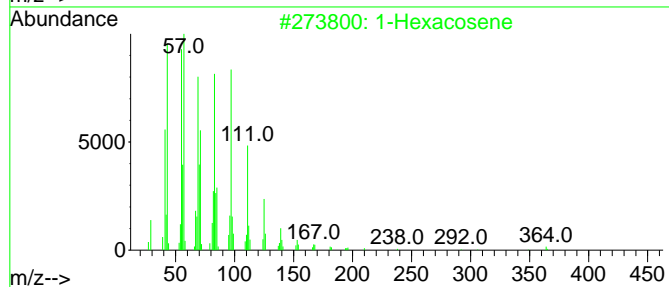
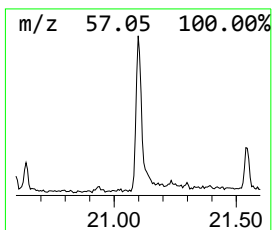
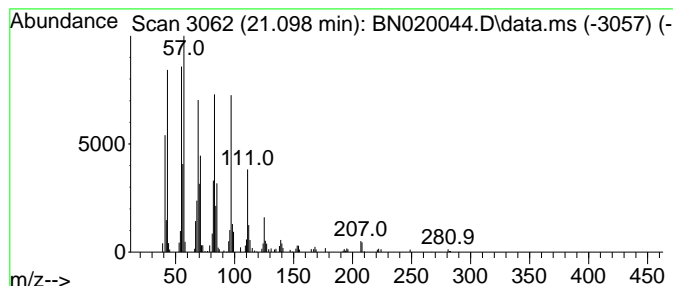
TIC Library : C:\Database\NIST20.L  
 TIC Integration Parameters: LSCINT.P

\*\*\*\*\*  
 Peak Number 3 (DEL) Alkane: Straight-Chai... Concentration Rank 4

R.T.	EstConc	Area	Relative to ISTD	R.T.
21.098	2.03 ng/ul	248063	Chrysene-d12	21.375

Hit#	of 5	Tentative ID	MW	MolForm	CAS#	Qual
1		1-Hexacosene	364	C26H52	018835-33-1	94
2		1-Tetracosene	336	C24H48	010192-32-2	91
3		Heptafluorobutyric acid, n-octad...	466	C22H37F7O2	000400-57-7	91
4		Octacosanol	410	C28H58O	000557-61-9	91
5		Pentafluoropropionic acid, octad...	416	C21H37F5O2	959261-25-7	91



Data Path : Z:\svoasrv\HPCHEM1\BNA\_N\Data\BN060722\  
 Data File : BN020044.D  
 Acq On : 08 Jun 2022 00:43  
 Operator : CG/JU  
 Sample : N3171-06  
 Misc :  
 ALS Vial : 20 Sample Multiplier: 1

Instrument :  
 BNA\_N  
 ClientSampleId :  
 DBTZ1

Quant Method : Z:\svoasrv\HPCHEM1\BNA\_N\Methods\SFAM-EPA-BN060622.M  
 Quant Title : SVOA CALIBRATION

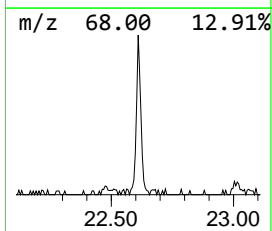
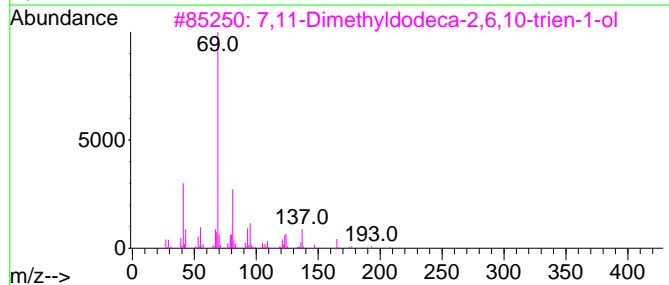
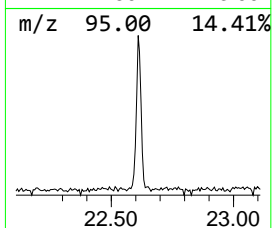
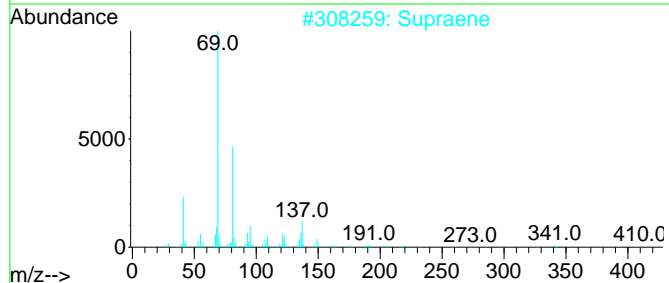
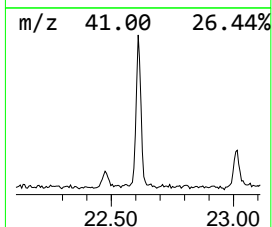
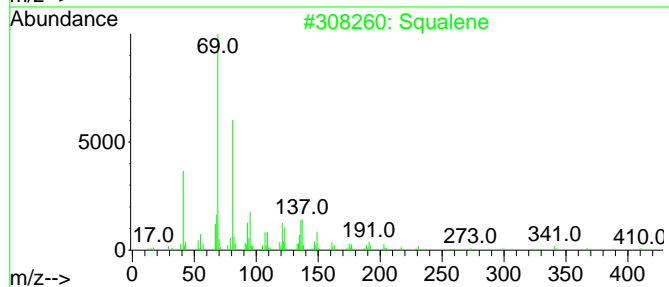
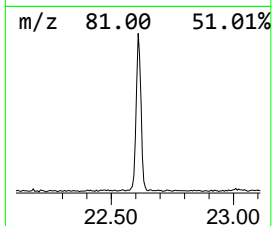
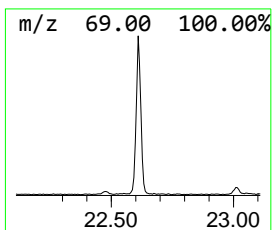
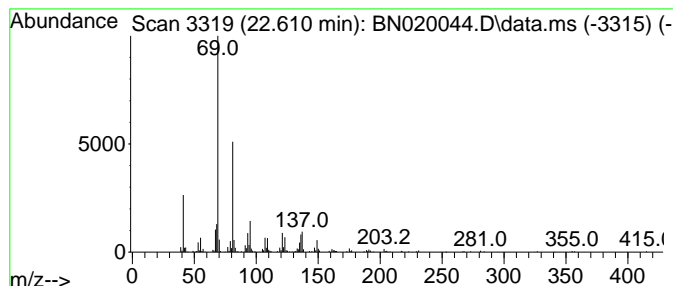
TIC Library : C:\Database\NIST20.L  
 TIC Integration Parameters: LSCINT.P

\*\*\*\*\*  
 Peak Number 4 Squalene Concentration Rank 3

R.T.	EstConc	Area	Relative to ISTD	R.T.
22.610	2.13 ng/ul	267316	Perylene-d12	23.704

Hit#	of	5	Tentative ID	MW	MolForm	CAS#	Qual
1			Squalene	410	C30H50	000111-02-4	91
2			Supraene	410	C30H50	007683-64-9	87
3			7,11-Dimethyldodeca-2,6,10-trien...	208	C14H24O	125529-10-4	72
4			2,6,10,14-Hexadecatetraenoic aci...	332	C22H36O2	024035-35-6	64
5			(.+/-)-Lavandulol, pentafluorop...	300	C13H17F5O2	1000352-63-1	64





Data Path : Z:\svoasrv\HPCHEM1\BNA\_N\Data\BN060722\  
 Data File : BN020044.D  
 Acq On : 08 Jun 2022 00:43  
 Operator : CG/JU  
 Sample : N3171-06  
 Misc :  
 ALS Vial : 20 Sample Multiplier: 1

Instrument :  
 BNA\_N  
 ClientSampleId :  
 DBT21

Quant Method : Z:\svoasrv\HPCHEM1\BNA\_N\Methods\SFAM-EPA-BN060622.M  
 Quant Title : SVOA CALIBRATION

TIC Library : C:\Database\NIST20.L  
 TIC Integration Parameters: LSCINT.P

TIC Top Hit name	RT	EstConc	Units	Response	--Internal Standard--			
					#	RT	Resp	Conc
p-Cresol	8.581	7.5	ng/u1	295978	1	7.822	788620	20.0
n-Hexadecanoic ...	18.092	2.4	ng/u1	248697	4	17.192	2088100	20.0
(DEL) Alkane: S...	21.098	2.0	ng/u1	248063	5	21.375	2447030	20.0
Squalene	22.610	2.1	ng/u1	267316	6	23.704	2512650	20.0