

Data Path : Z:\svoasrv\HPCHEM1\BNA\_N\Data\BN062122\  
 Data File : BN020308.D  
 Acq On : 21 Jun 2022 15:26  
 Operator : CG/JU  
 Sample : N3313-04MSD  
 Misc :  
 ALS Vial : 10 Sample Multiplier: 1

Instrument :  
 BNA\_N  
 ClientSampleId :  
 YB7L2MSD

Quant Time: Jun 22 00:08:23 2022  
 Quant Method : Z:\SVOASRV\HPCHEM1\BNA\_N\METHODS\SFAM-EPA-SIM-BN061822.M  
 Quant Title : ASP BNA STANDARDS FOR 5 POINT CALIBRATION  
 QLast Update : Mon Jun 20 01:13:51 2022  
 Response via : Initial Calibration

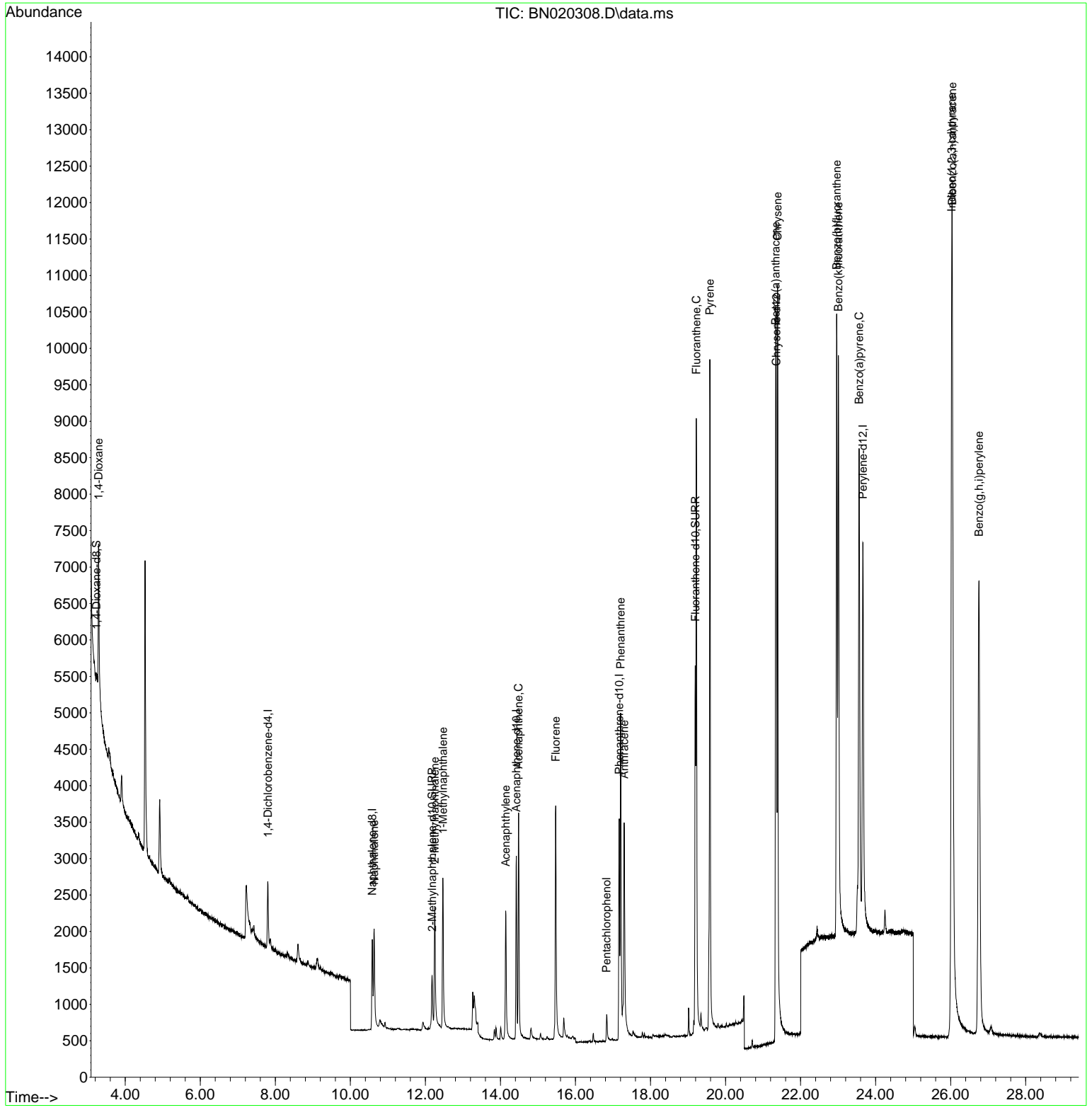
Compound	R.T.	QIon	Response	Conc	Units	Dev(Min)
Internal Standards						
1) 1,4-Dichlorobenzene-d4	7.800	152	639	0.400	ng/ul	0.00
4) Naphthalene-d8	10.584	136	2273	0.400	ng/ul	0.00
9) Acenaphthene-d10	14.423	164	1618	0.400	ng/ul	0.00
13) Phenanthrene-d10	17.166	188	4208	0.400	ng/ul	0.00
17) Chrysene-d12	21.353	240	6800	0.400	ng/ul	0.00
23) Perylene-d12	23.662	264	8085	0.400	ng/ul	0.00
System Monitoring Compounds						
3) 1,4-Dioxane-d8	3.231	96	411	0.563	ng/ul	-0.03
6) 2-Methylnaphthalene-d10	12.179	152	1457	0.388	ng/ul	0.00
18) Fluoranthene-d10	19.192	212	6101	0.435	ng/ul	0.00
Target Compounds						
						Qvalue
2) 1,4-Dioxane	3.290	88	1646	2.344	ng/ul#	1
5) Naphthalene	10.634	128	2419	0.333	ng/ul	96
7) 2-Methylnaphthalene	12.250	142	1531	0.326	ng/ul	99
8) 1-Methylnaphthalene	12.465	142	1696	0.367	ng/ul	100
10) Acenaphthylene	14.141	152	2689	0.347	ng/ul	97
11) Acenaphthene	14.483	153	2166	0.293	ng/ul	98
12) Fluorene	15.473	166	2667	0.348	ng/ul	100
14) Pentachlorophenol	16.829	266	349	0.432	ng/ul	95
15) Phenanthrene	17.204	178	5342	0.351	ng/ul	99
16) Anthracene	17.297	178	4309	0.334	ng/ul	99
19) Fluoranthene	19.220	202	7841	0.286	ng/ul	96
20) Pyrene	19.583	202	8489	0.285	ng/ul	100
21) Benzo(a)anthracene	21.335	228	8265	0.313	ng/ul	99
22) Chrysene	21.388	228	9751	0.297	ng/ul	100
24) Benzo(b)fluoranthene	22.963	252	11563	0.200	ng/ul	95
25) Benzo(k)fluoranthene	23.007	252	11576	0.215	ng/ul	97
26) Benzo(a)pyrene	23.560	252	11375	0.311	ng/ul	98
27) Indeno(1,2,3-cd)pyrene	26.027	276	15895	0.267	ng/ul#	100
28) Dibenzo(a,h)anthracene	26.044	278	13246	0.279	ng/ul	98
29) Benzo(g,h,i)perylene	26.755	276	14433	0.275	ng/ul	99

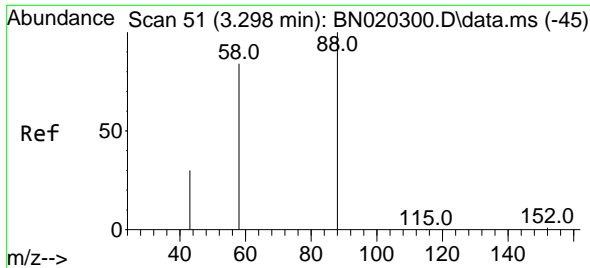
(#) = qualifier out of range (m) = manual integration (+) = signals summed

Data Path : Z:\svoasrv\HPCHEM1\BNA\_N\Data\BN062122\  
 Data File : BN020308.D  
 Acq On : 21 Jun 2022 15:26  
 Operator : CG/JU  
 Sample : N3313-04MSD  
 Misc :  
 ALS Vial : 10 Sample Multiplier: 1

**Instrument :**  
 BNA\_N  
**ClientSampleId :**  
 YB7L2MSD

Quant Time: Jun 22 00:08:23 2022  
 Quant Method : Z:\SVOASRV\HPCHEM1\BNA\_N\METHODS\SFAM-EPA-SIM-BN061822.M  
 Quant Title : ASP BNA STANDARDS FOR 5 POINT CALIBRATION  
 QLast Update : Mon Jun 20 01:13:51 2022  
 Response via : Initial Calibration

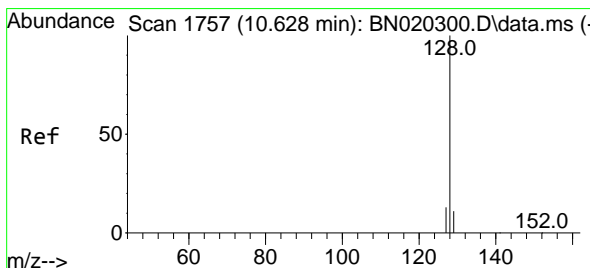
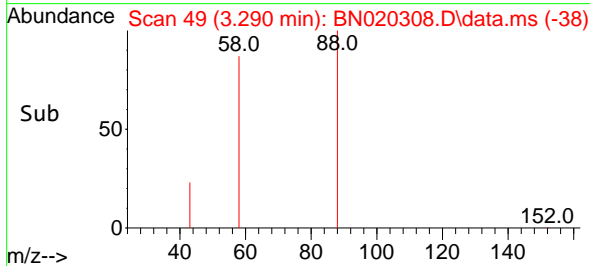
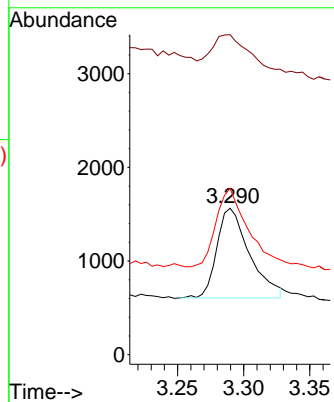
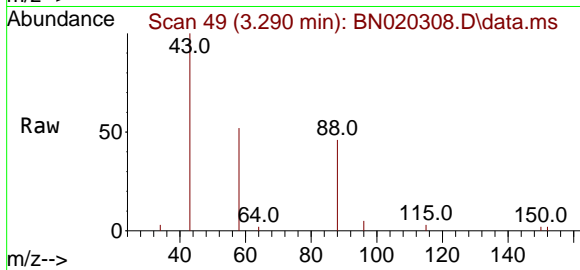




#2  
 1,4-Dioxane  
 Concen: 2.344 ng/u1  
 RT: 3.290 min Scan# 49  
 Delta R.T. -0.004 min  
 Lab File: BN020308.D  
 Acq: 21 Jun 2022 15:26

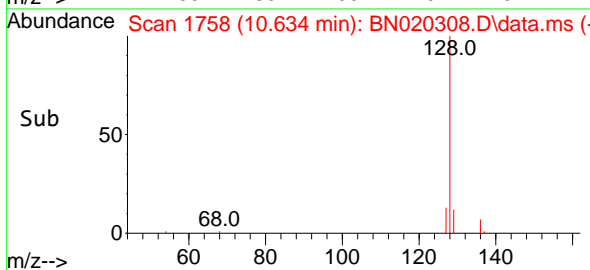
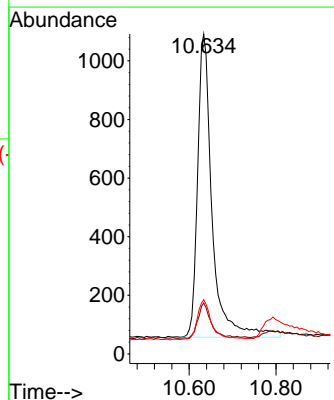
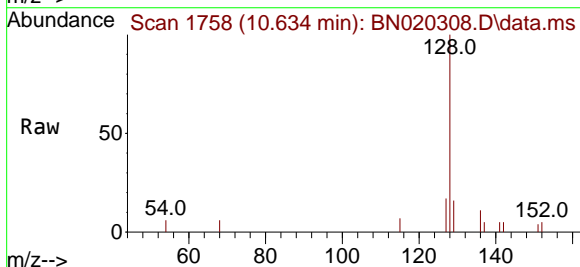
Instrument :  
 BNA\_N  
 ClientSampleId :  
 YB7L2MSD

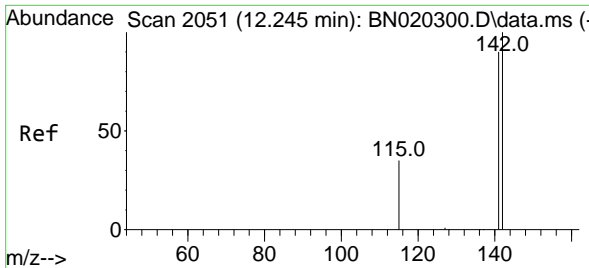
Tgt Ion: 88 Resp: 1646  
 Ion Ratio Lower Upper  
 88 100  
 43 218.6 31.6 47.4#  
 58 113.6 23.8 35.6#



#5  
 Naphthalene  
 Concen: 0.333 ng/u1  
 RT: 10.634 min Scan# 1758  
 Delta R.T. -0.000 min  
 Lab File: BN020308.D  
 Acq: 21 Jun 2022 15:26

Tgt Ion:128 Resp: 2419  
 Ion Ratio Lower Upper  
 128 100  
 129 15.9 11.0 16.4  
 127 16.9 12.8 19.2

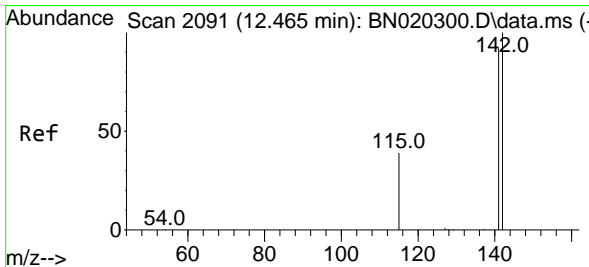
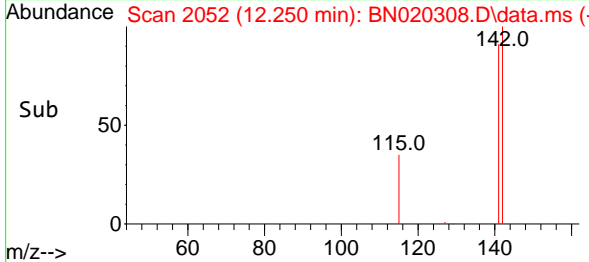
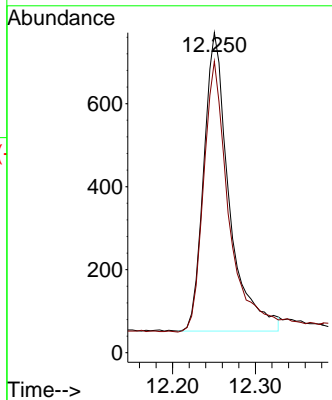
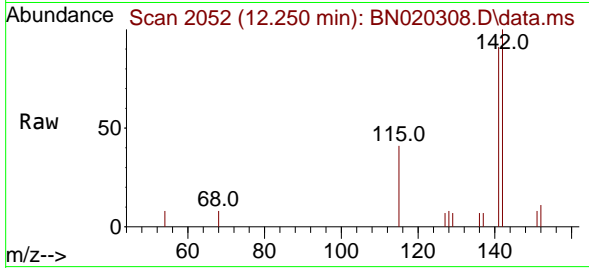




#7  
 2-Methylnaphthalene  
 Concen: 0.326 ng/uI  
 RT: 12.250 min Scan# 2051  
 Delta R.T. -0.000 min  
 Lab File: BN020308.D  
 Acq: 21 Jun 2022 15:26

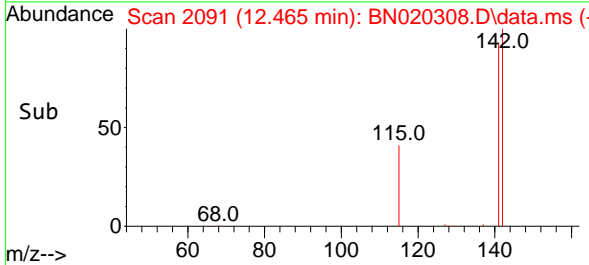
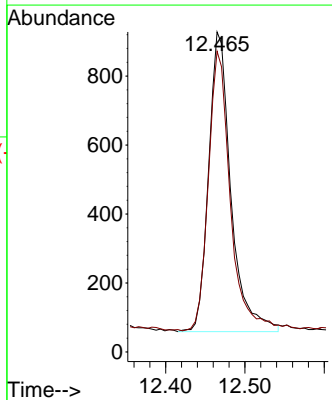
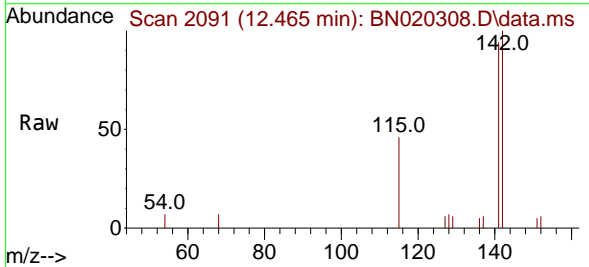
Instrument : BNA\_N  
 ClientSampleId : YB7L2MSD

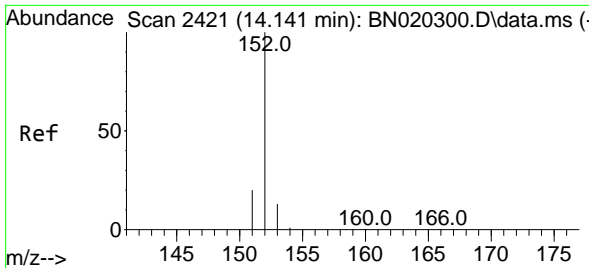
Tgt Ion:142 Resp: 1531  
 Ion Ratio Lower Upper  
 142 100  
 141 90.7 71.8 107.8



#8  
 1-Methylnaphthalene  
 Concen: 0.367 ng/uI  
 RT: 12.465 min Scan# 2091  
 Delta R.T. -0.000 min  
 Lab File: BN020308.D  
 Acq: 21 Jun 2022 15:26

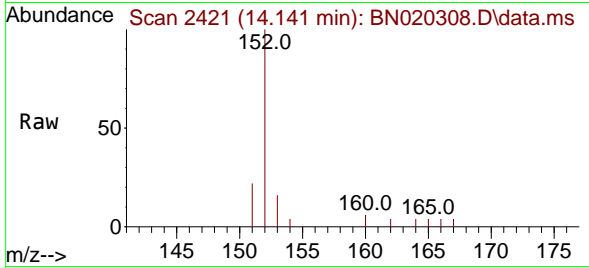
Tgt Ion:142 Resp: 1696  
 Ion Ratio Lower Upper  
 142 100  
 141 91.5 73.4 110.0





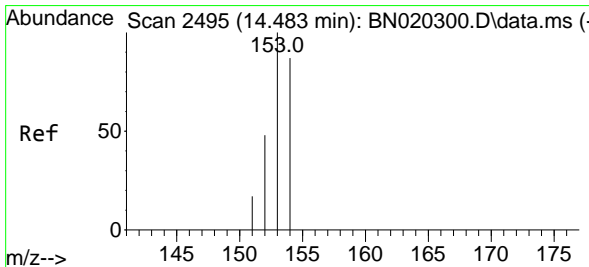
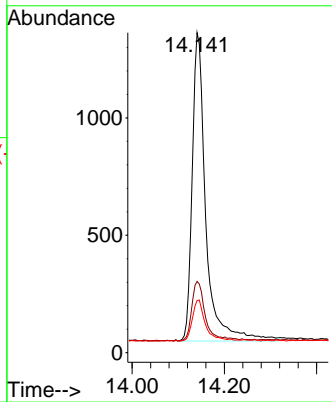
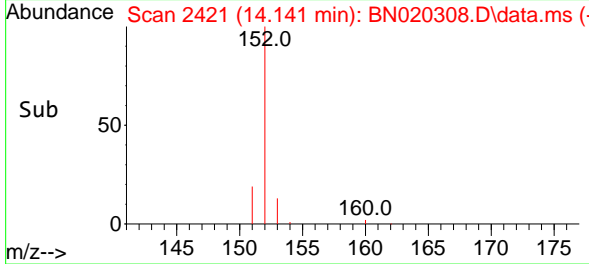
#10  
 Acenaphthylene  
 Concen: 0.347 ng/u1  
 RT: 14.141 min Scan# 2421  
 Delta R.T. -0.000 min  
 Lab File: BN020308.D  
 Acq: 21 Jun 2022 15:26

Instrument :  
 BNA\_N  
 ClientSampleId :  
 YB7L2MSD

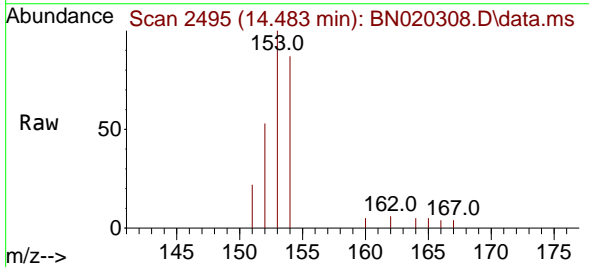


Tgt Ion:152 Resp: 2689

Ion	Ratio	Lower	Upper
152	100		
151	22.2	17.2	25.8
153	16.3	11.7	17.5

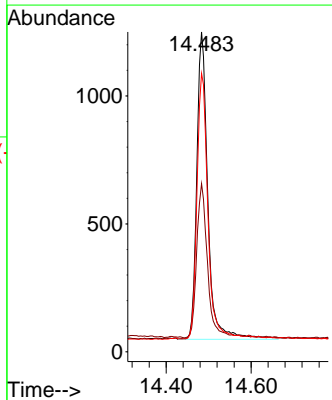
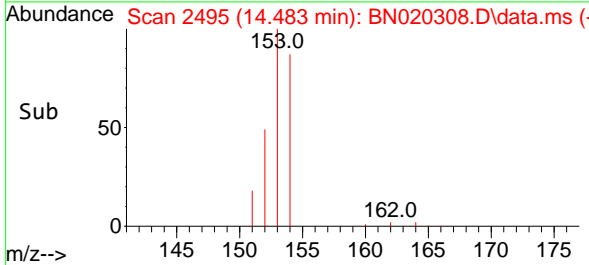


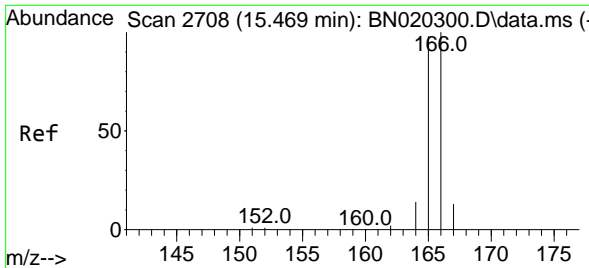
#11  
 Acenaphthene  
 Concen: 0.293 ng/u1  
 RT: 14.483 min Scan# 2495  
 Delta R.T. -0.000 min  
 Lab File: BN020308.D  
 Acq: 21 Jun 2022 15:26



Tgt Ion:153 Resp: 2166

Ion	Ratio	Lower	Upper
153	100		
152	52.6	39.9	59.9
154	87.0	69.2	103.8



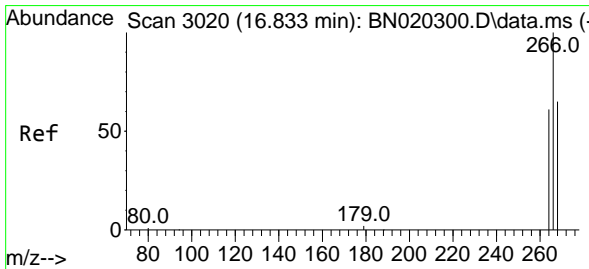
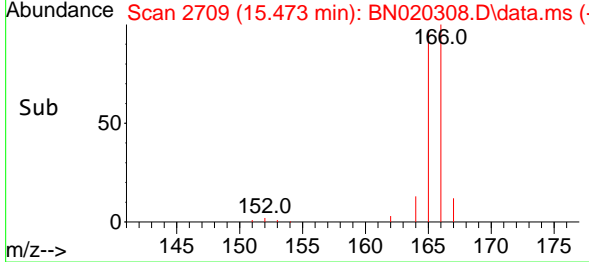
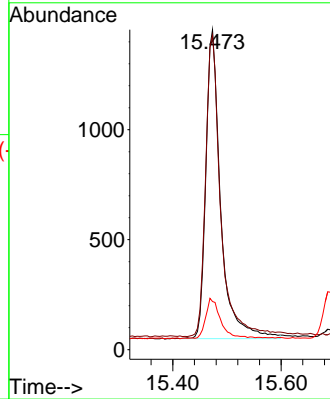
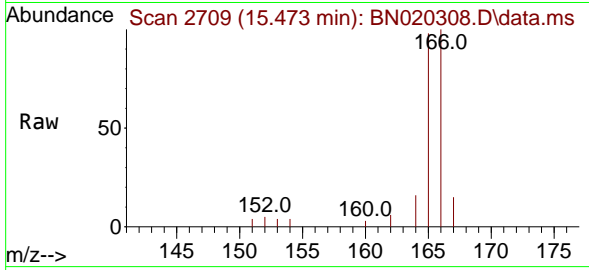


#12  
 Fluorene  
 Concen: 0.348 ng/uI  
 RT: 15.473 min Scan# 219  
 Delta R.T. -0.000 min  
 Lab File: BN020308.D  
 Acq: 21 Jun 2022 15:26

Instrument :  
 BNA\_N  
 ClientSampleId :  
 YB7L2MSD

Tgt Ion:166 Resp: 2667

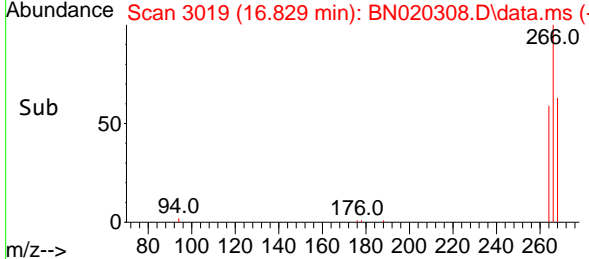
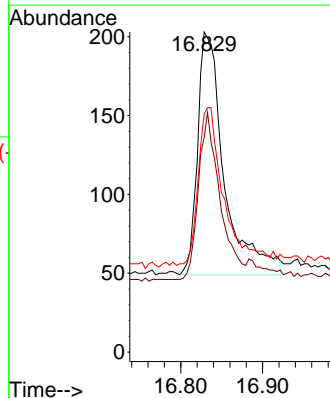
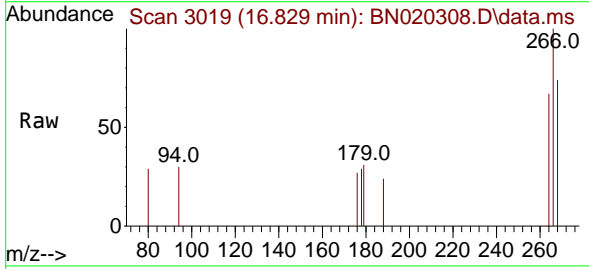
Ion	Ratio	Lower	Upper
166	100		
165	98.3	78.2	117.4
167	15.1	12.1	18.1

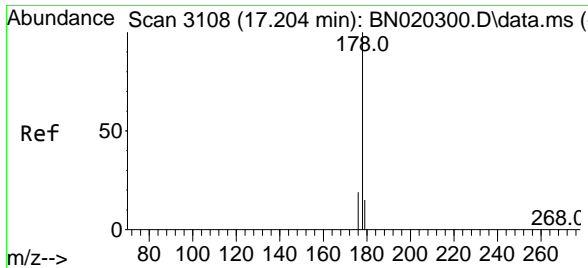


#14  
 Pentachlorophenol  
 Concen: 0.432 ng/uI  
 RT: 16.829 min Scan# 3019  
 Delta R.T. -0.009 min  
 Lab File: BN020308.D  
 Acq: 21 Jun 2022 15:26

Tgt Ion:266 Resp: 349

Ion	Ratio	Lower	Upper
266	100		
264	55.6	49.8	74.8
268	63.0	51.8	77.6

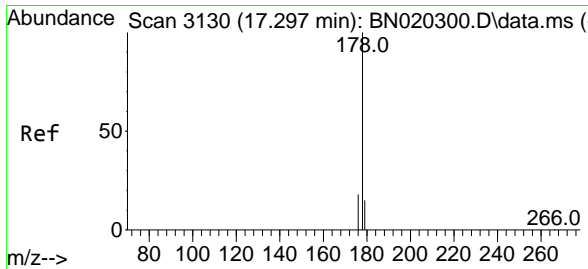
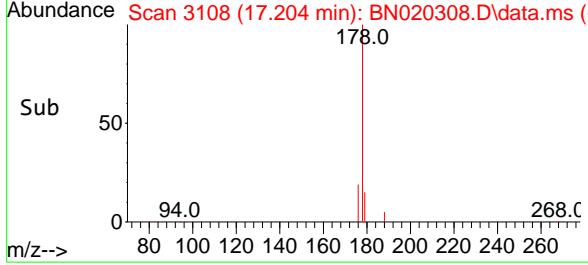
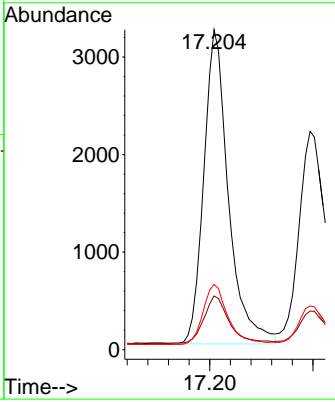
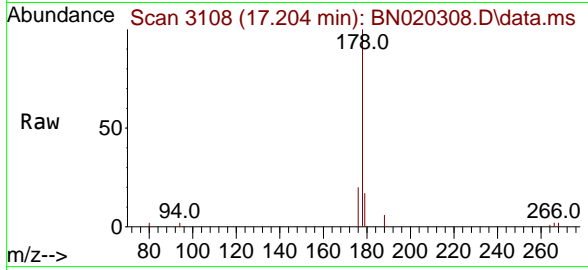




#15  
 Phenanthrene  
 Concen: 0.351 ng/u1  
 RT: 17.204 min Scan# 3108  
 Delta R.T. -0.000 min  
 Lab File: BN020308.D  
 Acq: 21 Jun 2022 15:26

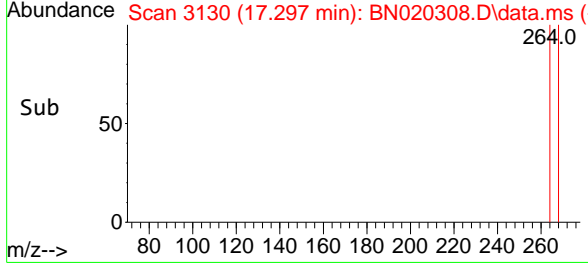
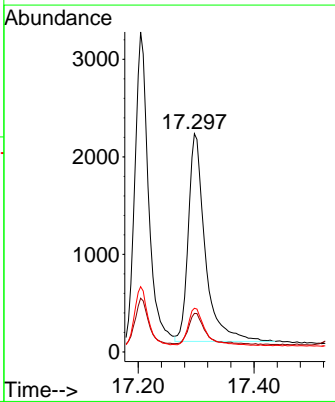
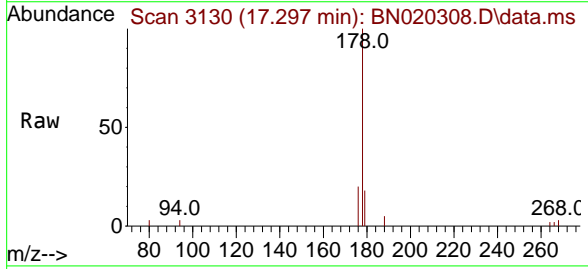
Instrument : BNA\_N  
 ClientSampleId : YB7L2MSD

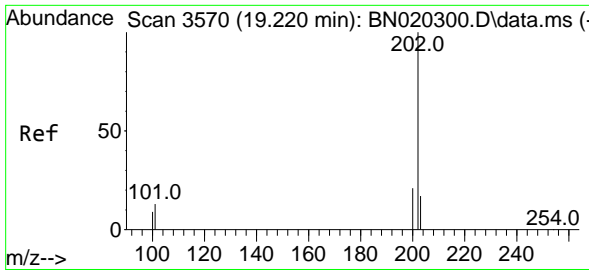
Tgt Ion	Resp	Lower	Upper
178	100		
179	16.8	13.4	20.0
176	20.4	15.8	23.6



#16  
 Anthracene  
 Concen: 0.334 ng/u1  
 RT: 17.297 min Scan# 3130  
 Delta R.T. -0.004 min  
 Lab File: BN020308.D  
 Acq: 21 Jun 2022 15:26

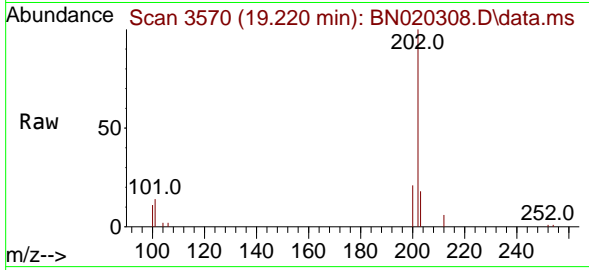
Tgt Ion	Resp	Lower	Upper
178	100		
179	17.7	13.8	20.8
176	20.0	15.6	23.4



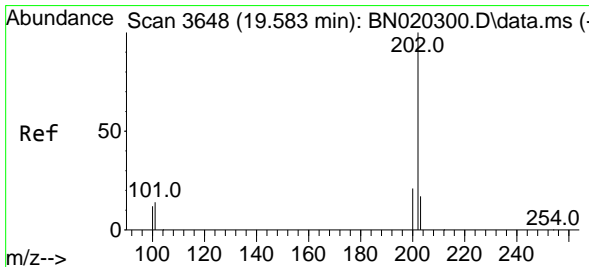
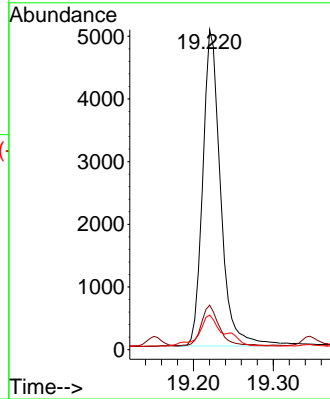
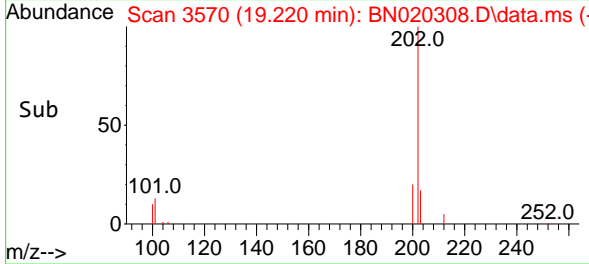


#19  
 Fluoranthene  
 Concen: 0.286 ng/u1  
 RT: 19.220 min Scan# 3570  
 Delta R.T. -0.005 min  
 Lab File: BN020308.D  
 Acq: 21 Jun 2022 15:26

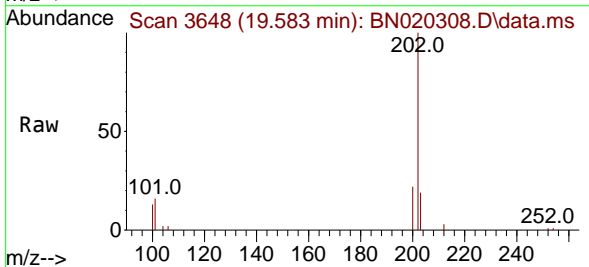
Instrument :  
 BNA\_N  
 ClientSampleId :  
 YB7L2MSD



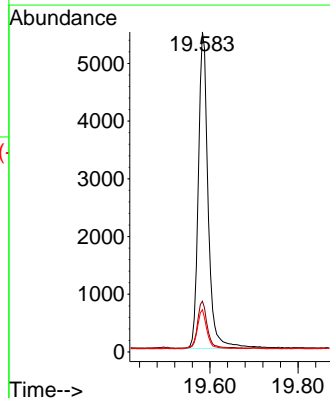
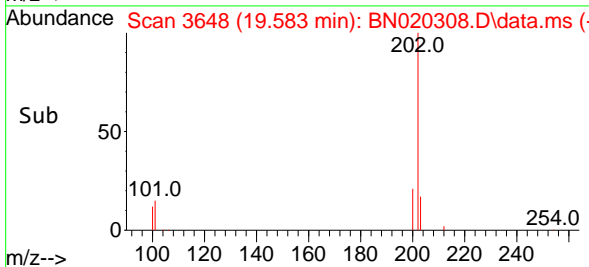
Tgt Ion:202 Resp: 7841  
 Ion Ratio Lower Upper  
 202 100  
 101 13.9 9.9 14.9  
 100 10.8 7.6 11.4



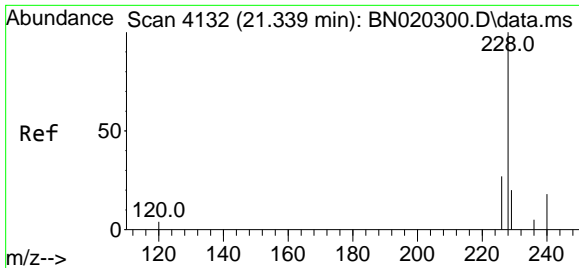
#20  
 Pyrene  
 Concen: 0.285 ng/u1  
 RT: 19.583 min Scan# 3648  
 Delta R.T. -0.000 min  
 Lab File: BN020308.D  
 Acq: 21 Jun 2022 15:26



Tgt Ion:202 Resp: 8489  
 Ion Ratio Lower Upper  
 202 100  
 101 15.9 12.6 19.0  
 100 13.2 10.3 15.5

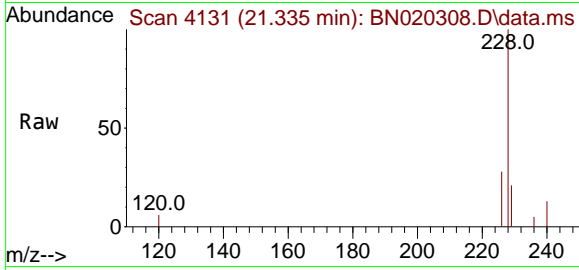






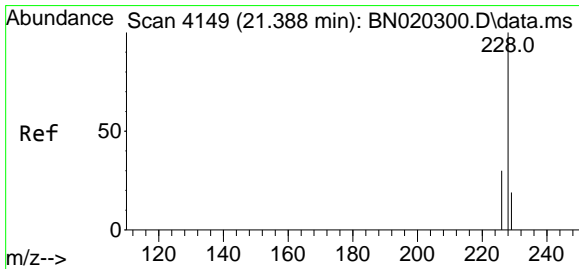
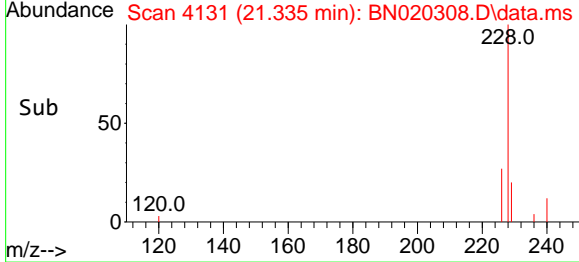
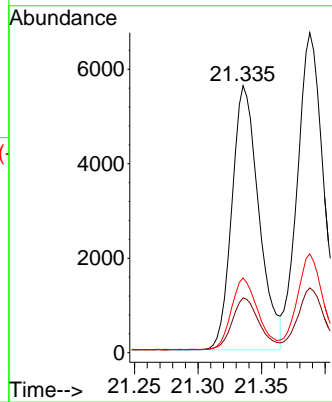
#21  
 Benzo(a)anthracene  
 Concen: 0.313 ng/u1  
 RT: 21.335 min Scan# 4113  
 Delta R.T. -0.003 min  
 Lab File: BN020308.D  
 Acq: 21 Jun 2022 15:26

Instrument : BNA\_N  
 ClientSampleId : YB7L2MSD



Tgt Ion:228 Resp: 8265

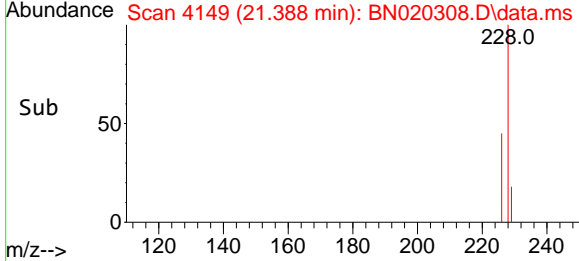
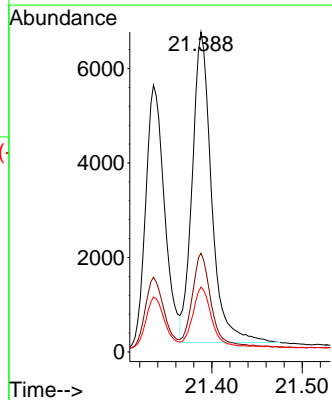
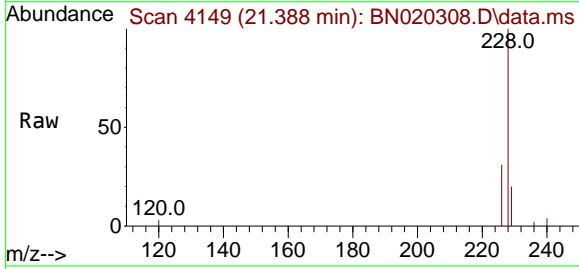
Ion	Ratio	Lower	Upper
228	100		
229	20.5	16.0	24.0
226	28.0	21.8	32.6

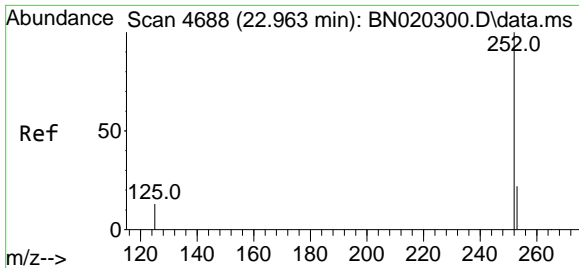


#22  
 Chrysene  
 Concen: 0.297 ng/u1  
 RT: 21.388 min Scan# 4149  
 Delta R.T. -0.000 min  
 Lab File: BN020308.D  
 Acq: 21 Jun 2022 15:26

Tgt Ion:228 Resp: 9751

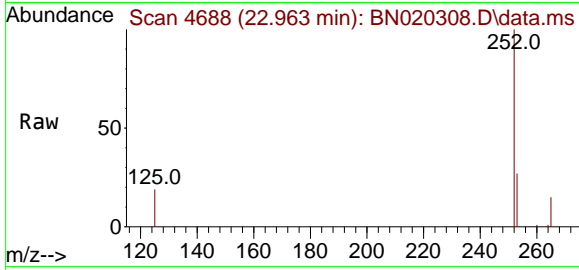
Ion	Ratio	Lower	Upper
228	100		
226	30.9	24.7	37.1
229	20.2	16.0	24.0





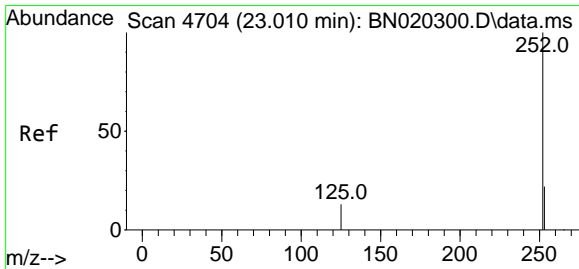
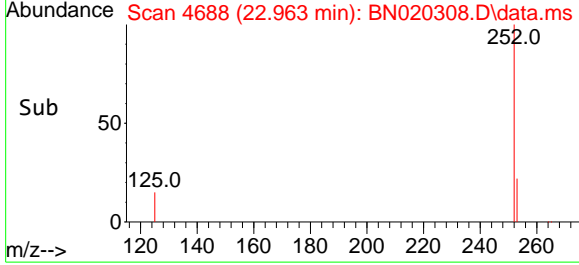
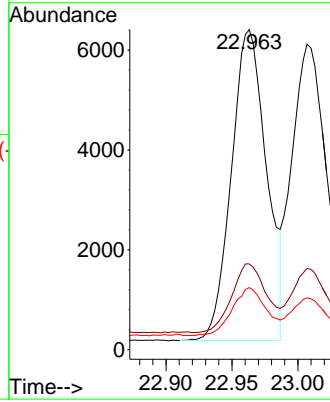
#24  
 Benzo(b)fluoranthene  
 Concen: 0.200 ng/u1  
 RT: 22.963 min Scan# 4688  
 Delta R.T. -0.003 min  
 Lab File: BN020308.D  
 Acq: 21 Jun 2022 15:26

Instrument : BNA\_N  
 ClientSampleId : YB7L2MSD



Tgt Ion:252 Resp: 11563

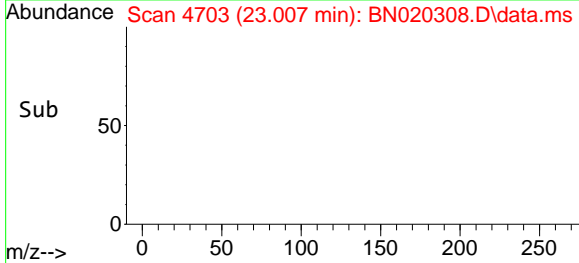
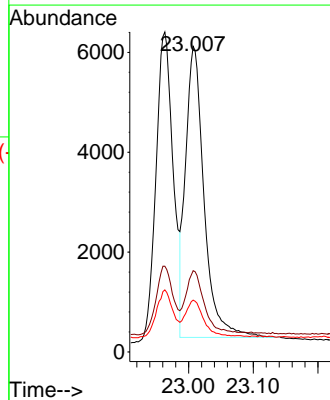
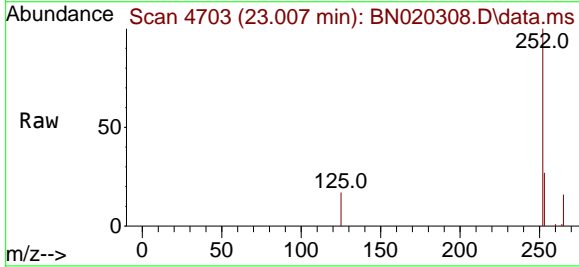
Ion	Ratio	Lower	Upper
252	100		
253	26.8	0.0	49.4
125	19.4	0.0	33.2

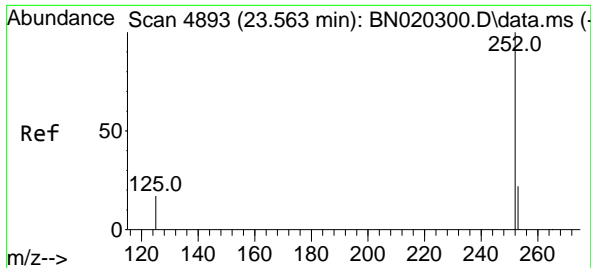


#25  
 Benzo(k)fluoranthene  
 Concen: 0.215 ng/u1  
 RT: 23.007 min Scan# 4703  
 Delta R.T. -0.003 min  
 Lab File: BN020308.D  
 Acq: 21 Jun 2022 15:26

Tgt Ion:252 Resp: 11576

Ion	Ratio	Lower	Upper
252	100		
253	26.6	20.2	30.4
125	17.0	12.3	18.5

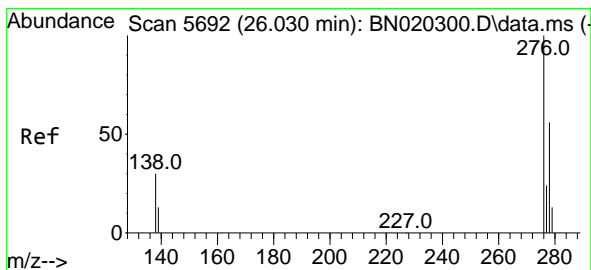
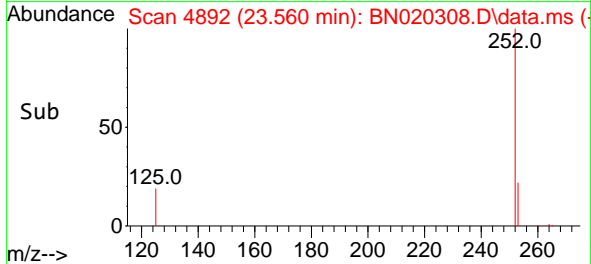
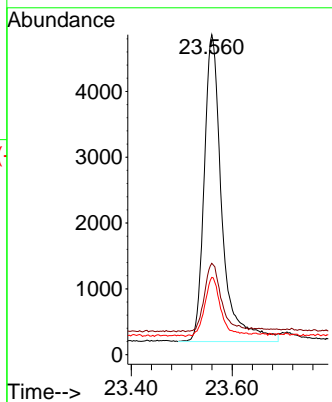
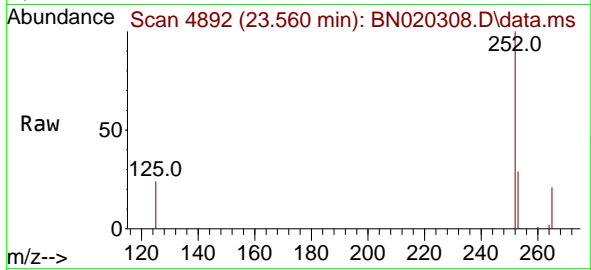




#26  
 Benzo(a)pyrene  
 Concen: 0.311 ng/u1  
 RT: 23.560 min Scan# 4892  
 Delta R.T. -0.003 min  
 Lab File: BN020308.D  
 Acq: 21 Jun 2022 15:26

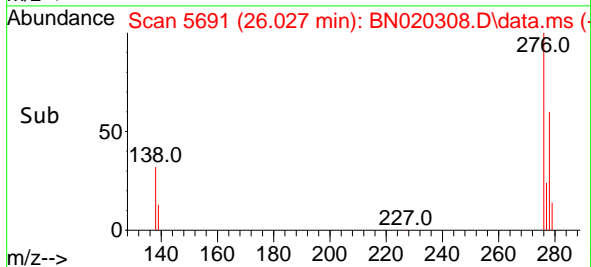
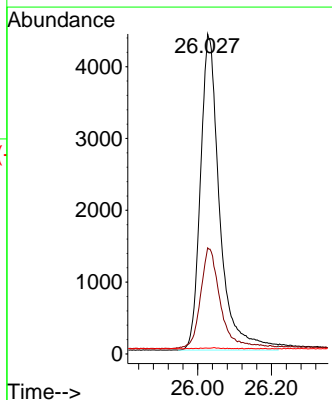
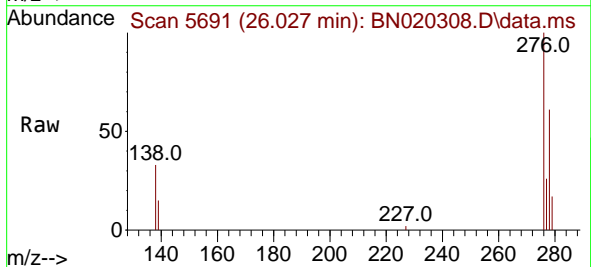
Instrument :  
 BNA\_N  
 ClientSampleId :  
 YB7L2MSD

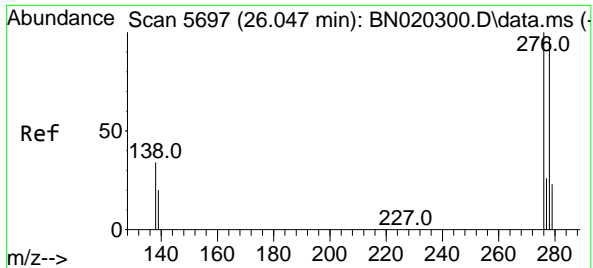
Tgt Ion	Resp	Lower	Upper
252	11375		
253	28.6	21.7	32.5
125	24.1	18.6	28.0



#27  
 Indeno(1,2,3-cd)pyrene  
 Concen: 0.267 ng/u1  
 RT: 26.027 min Scan# 5691  
 Delta R.T. -0.014 min  
 Lab File: BN020308.D  
 Acq: 21 Jun 2022 15:26

Tgt Ion	Resp	Lower	Upper
276	15895		
276	100		
138	33.2	26.5	39.7
227	0.1	0.0	0.0



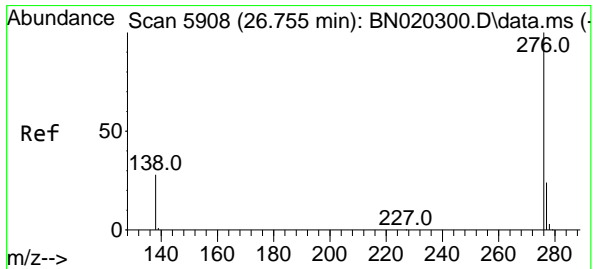
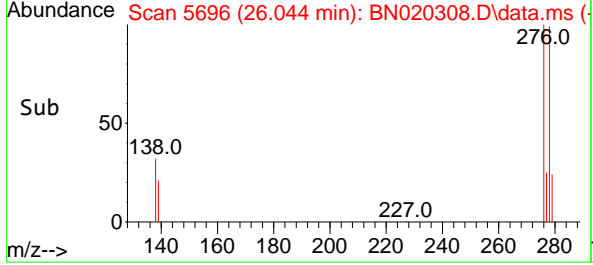
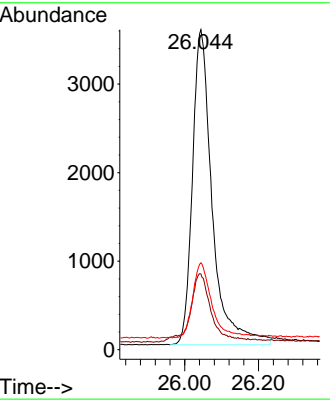
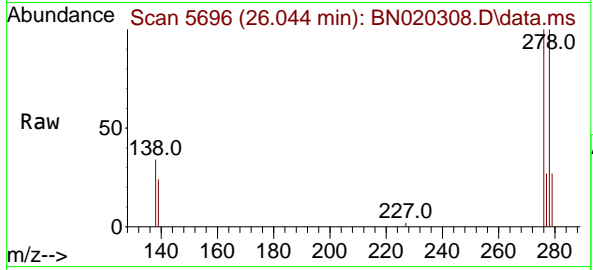


#28  
 Dibenzo(a,h)anthracene  
 Concen: 0.279 ng/ul  
 RT: 26.044 min Scan# 5696  
 Delta R.T. -0.007 min  
 Lab File: BN020308.D  
 Acq: 21 Jun 2022 15:26

Instrument : BNA\_N  
 ClientSampleId : YB7L2MSD

Tgt Ion:278 Resp: 13246

Ion	Ratio	Lower	Upper
278	100		
139	23.7	18.2	27.2
279	27.1	20.8	31.2



#29  
 Benzo(g,h,i)perylene  
 Concen: 0.275 ng/ul  
 RT: 26.755 min Scan# 5908  
 Delta R.T. -0.010 min  
 Lab File: BN020308.D  
 Acq: 21 Jun 2022 15:26

Tgt Ion:276 Resp: 14433

Ion	Ratio	Lower	Upper
276	100		
138	29.4	23.0	34.4
277	24.8	19.7	29.5

