

Data Path : Z:\svoasrv\HPCHEM1\BNA_N\Data\BN062622\
 Data File : BN020485.D
 Acq On : 27 Jun 2022 05:45
 Operator : CG/JU
 Sample : N3354-12
 Misc :
 ALS Vial : 22 Sample Multiplier: 1

Instrument :
 BNA_N
 ClientSampleId :
 MW-56

Quant Time: Jun 27 07:50:13 2022
 Quant Method : Z:\SVOASRV\HPCHEM1\BNA_N\METHODS\8270-SIM-BN062622.M
 Quant Title : ASP BNA STANDARDS FOR 5 POINT CALIBRATION
 QLast Update : Mon Jun 27 02:03:21 2022
 Response via : Initial Calibration

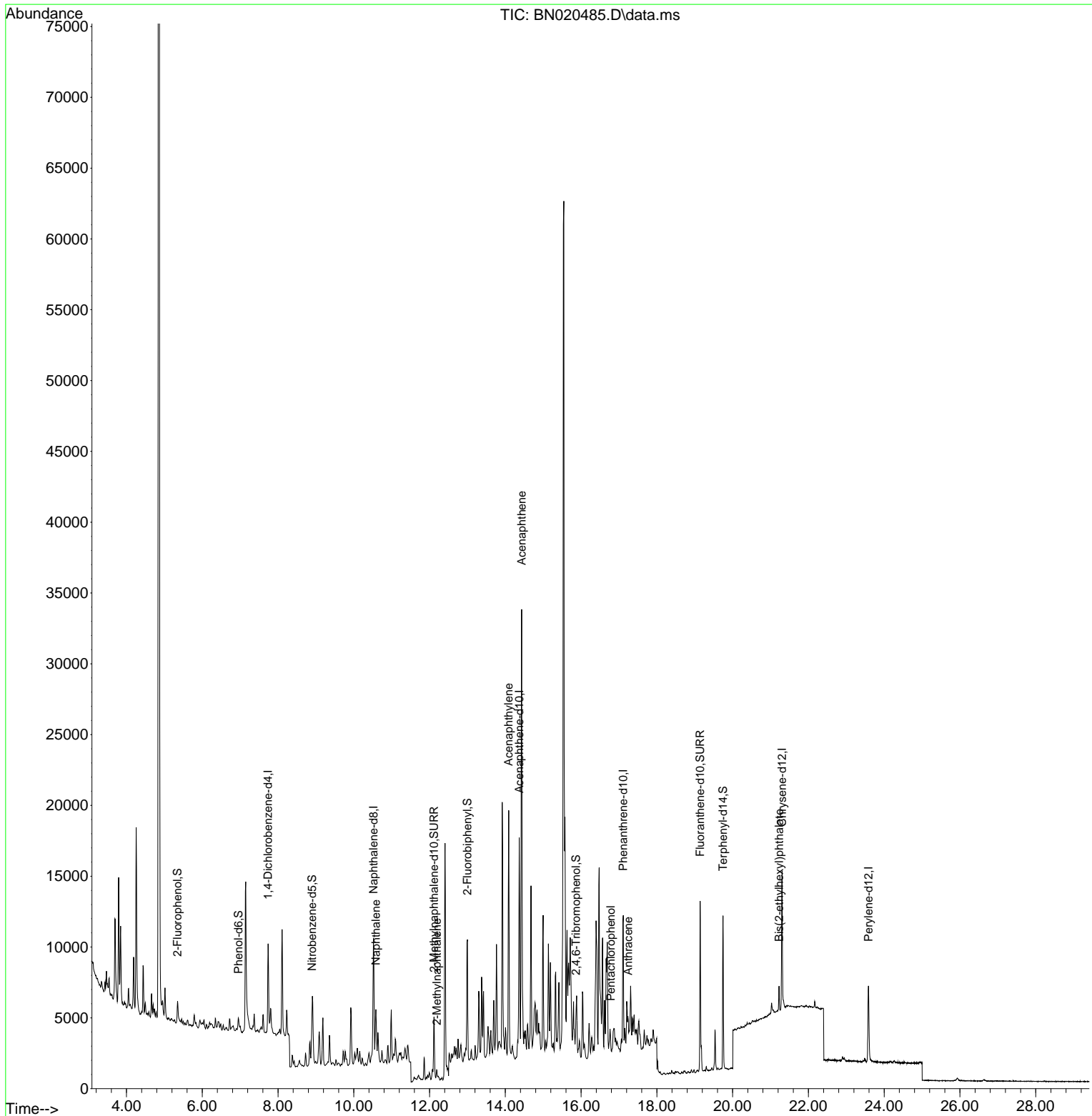
Compound	R.T.	QIon	Response	Conc	Units	Dev(Min)
Internal Standards						
1) 1,4-Dichlorobenzene-d4	7.739	152	3369	0.400	ng	0.00
7) Naphthalene-d8	10.520	136	10823	0.400	ng	# 0.00
13) Acenaphthene-d10	14.367	164	7187	0.400	ng	0.00
19) Phenanthrene-d10	17.113	188	12514	0.400	ng	0.00
29) Chrysene-d12	21.306	240	9707	0.400	ng	# 0.00
35) Perylene-d12	23.586	264	7807	0.400	ng	#-0.01
System Monitoring Compounds						
4) 2-Fluorophenol	5.348	112	1515	0.162	ng	0.00
5) Phenol-d6	6.952	99	1097	0.098	ng	0.00
8) Nitrobenzene-d5	8.897	82	2622	0.299	ng	0.00
11) 2-Methylnaphthalene-d10	12.117	152	6549	0.353	ng	0.00
14) 2,4,6-Tribromophenol	15.861	330	823	0.304	ng	0.00
15) 2-Fluorobiphenyl	12.998	172	8718	0.294	ng	0.00
27) Fluoranthene-d10	19.143	212	13118	0.353	ng	0.00
31) Terphenyl-d14	19.746	244	11820	0.510	ng	0.00
Target Compounds						
9) Naphthalene	10.584	128	1646	0.051	ng	# 7
12) 2-Methylnaphthalene	12.193	142	514	0.024	ng	# 56
16) Acenaphthylene	14.089	152	2567	0.074	ng	# 19
17) Acenaphthene	14.431	154	15806	0.673	ng	96
24) Pentachlorophenol	16.785	266	337	0.314	ng	# 72
26) Anthracene	17.246	178	3614	0.099	ng	# 80
34) Bis(2-ethylhexyl)phtha...	21.225	149	1583	0.081	ng	# 96

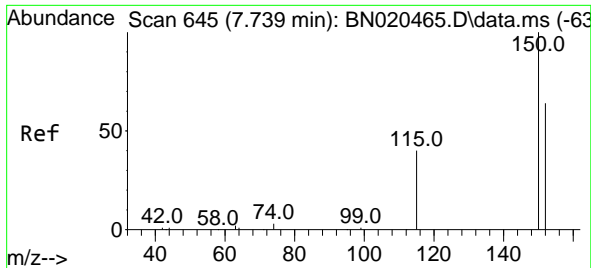
(#) = qualifier out of range (m) = manual integration (+) = signals summed

Data Path : Z:\svoasrv\HPCHEM1\BNA_N\Data\BN062622\
 Data File : BN020485.D
 Acq On : 27 Jun 2022 05:45
 Operator : CG/JU
 Sample : N3354-12
 Misc :
 ALS Vial : 22 Sample Multiplier: 1

Instrument :
 BNA_N
 ClientSampleId :
 MW-56

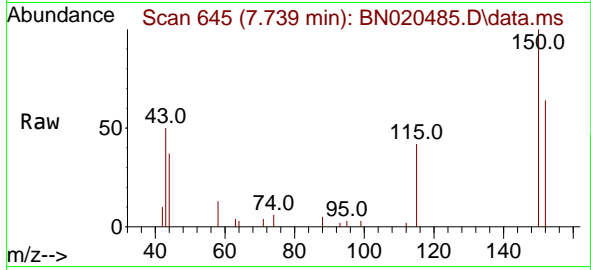
Quant Time: Jun 27 07:50:13 2022
 Quant Method : Z:\SVOASRV\HPCHEM1\BNA_N\METHODS\8270-SIM-BN062622.M
 Quant Title : ASP BNA STANDARDS FOR 5 POINT CALIBRATION
 QLast Update : Mon Jun 27 02:03:21 2022
 Response via : Initial Calibration



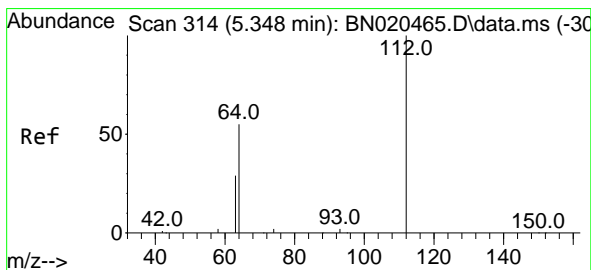
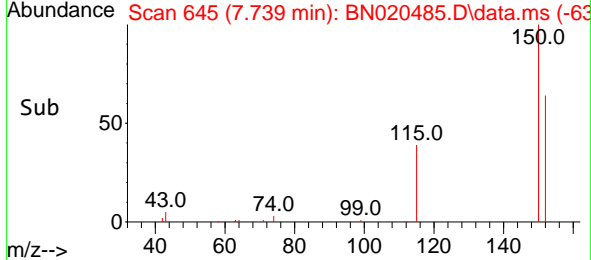
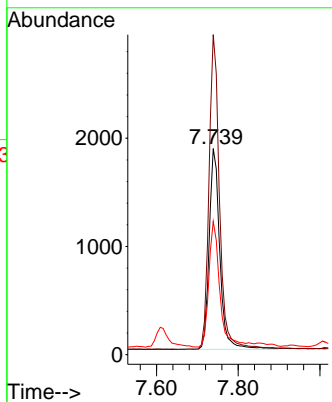


#1
 1,4-Dichlorobenzene-d4
 Concen: 0.400 ng
 RT: 7.739 min Scan# 645
 Delta R.T. -0.000 min
 Lab File: BN020485.D
 Acq: 27 Jun 2022 05:45

Instrument :
 BNA_N
 ClientSampleId :
 MW-56

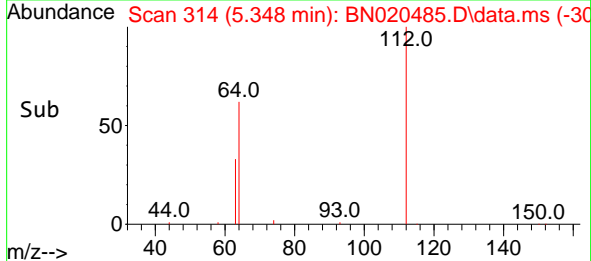
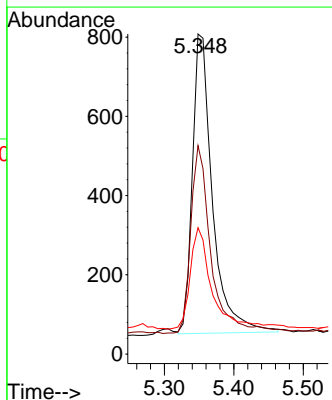
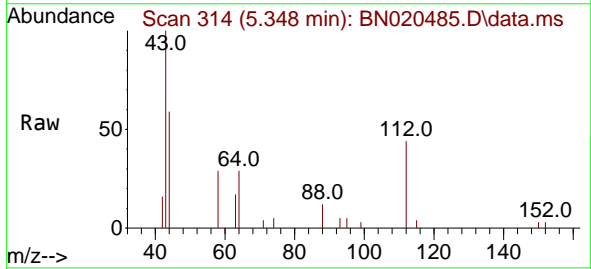


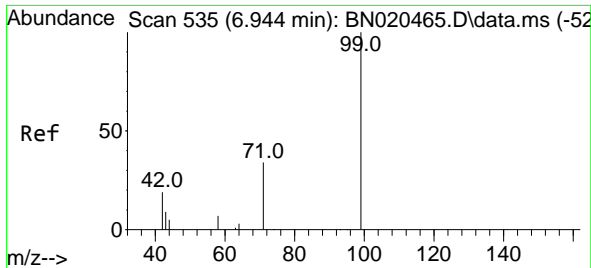
Tgt Ion:152 Resp: 3369
 Ion Ratio Lower Upper
 152 100
 150 155.3 127.9 191.9
 115 64.7 51.4 77.2



#4
 2-Fluorophenol
 Concen: 0.162 ng
 RT: 5.348 min Scan# 314
 Delta R.T. 0.000 min
 Lab File: BN020485.D
 Acq: 27 Jun 2022 05:45

Tgt Ion:112 Resp: 1515
 Ion Ratio Lower Upper
 112 100
 64 64.2 49.1 73.7
 63 37.5 26.3 39.5

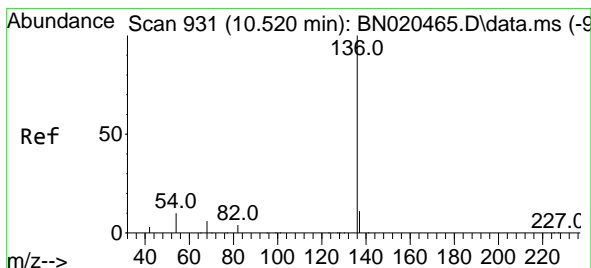
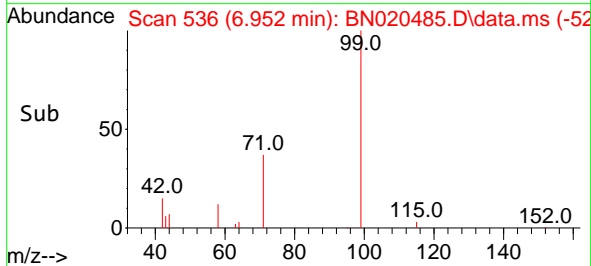
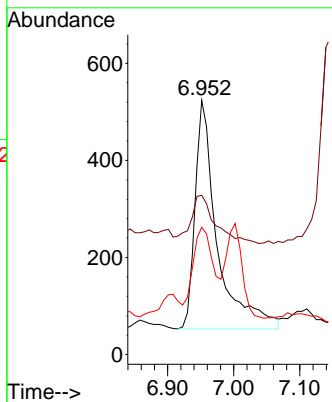
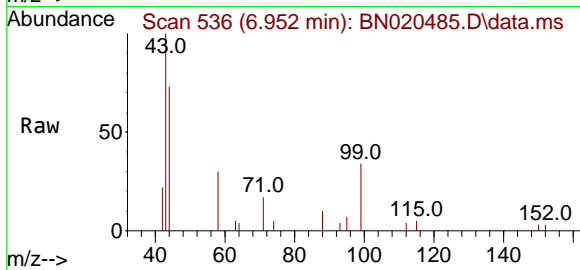




#5
 Phenol-d6
 Concen: 0.098 ng
 RT: 6.952 min Scan# 51
 Delta R.T. 0.007 min
 Lab File: BN020485.D
 Acq: 27 Jun 2022 05:45

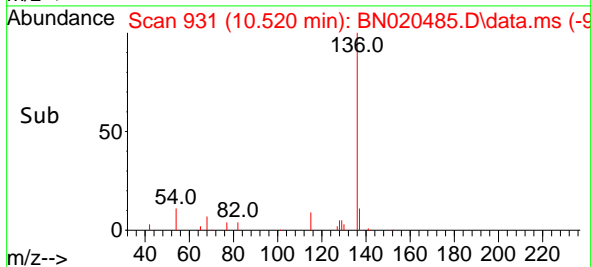
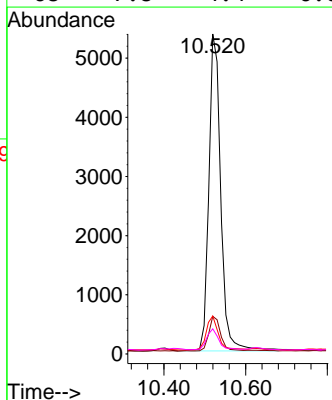
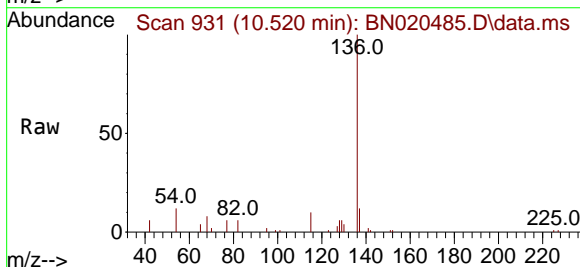
Instrument :
 BNA_N
 ClientSampleId :
 MW-56

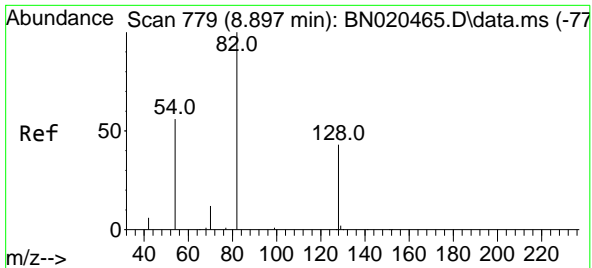
Tgt Ion	Resp	Lower	Upper
99	1097		
42	22.8	19.3	28.9
71	37.6	27.5	41.3



#7
 Naphthalene-d8
 Concen: 0.400 ng
 RT: 10.520 min Scan# 931
 Delta R.T. 0.000 min
 Lab File: BN020485.D
 Acq: 27 Jun 2022 05:45

Tgt Ion	Resp	Lower	Upper
136	10823		
137	11.7	9.0	13.6
54	11.9	6.2	9.2#
68	7.8	4.4	6.6#



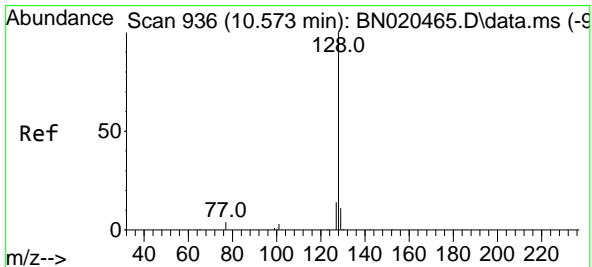
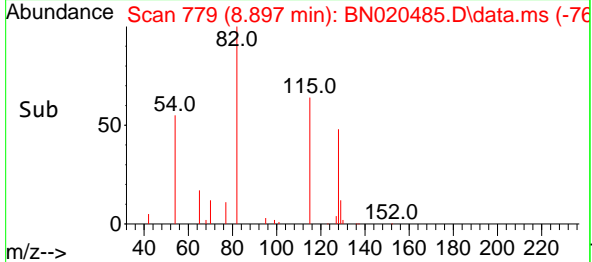
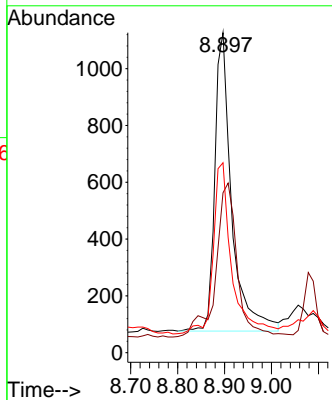
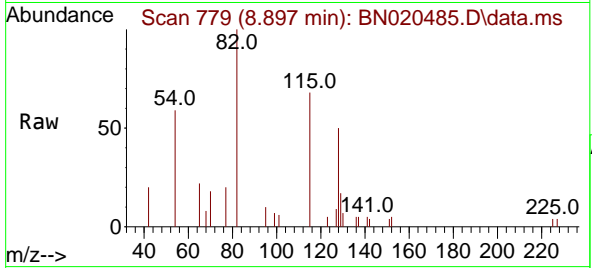


#8
 Nitrobenzene-d5
 Concen: 0.299 ng
 RT: 8.897 min Scan# 779
 Delta R.T. 0.000 min
 Lab File: BN020485.D
 Acq: 27 Jun 2022 05:45

Instrument :
 BNA_N
 ClientSampleId :
 MW-56

Tgt Ion: 82 Resp: 2622

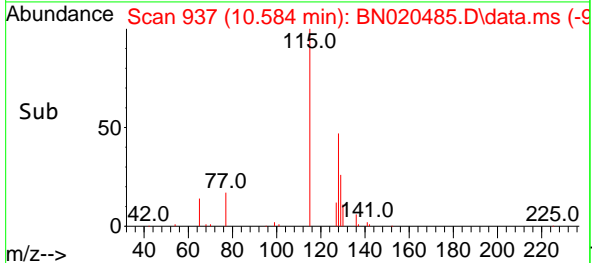
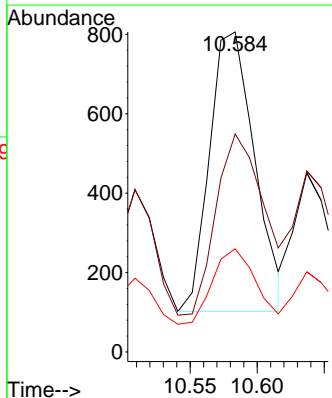
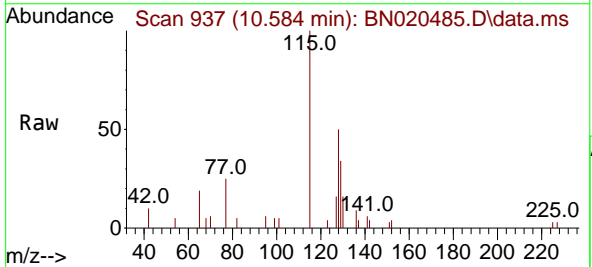
Ion	Ratio	Lower	Upper
82	100		
128	50.0	35.0	52.6
54	59.4	46.2	69.4

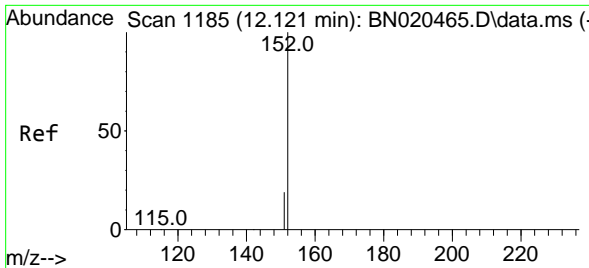


#9
 Naphthalene
 Concen: 0.051 ng
 RT: 10.584 min Scan# 937
 Delta R.T. 0.011 min
 Lab File: BN020485.D
 Acq: 27 Jun 2022 05:45

Tgt Ion: 128 Resp: 1646

Ion	Ratio	Lower	Upper
128	100		
129	68.1	8.9	13.3#
127	32.3	10.8	16.2#

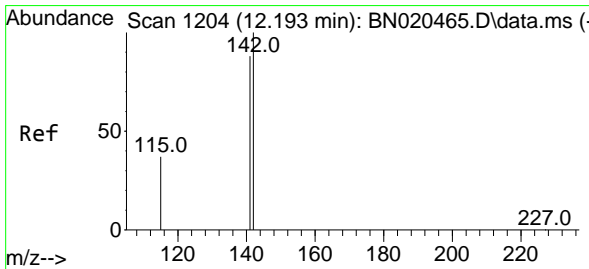
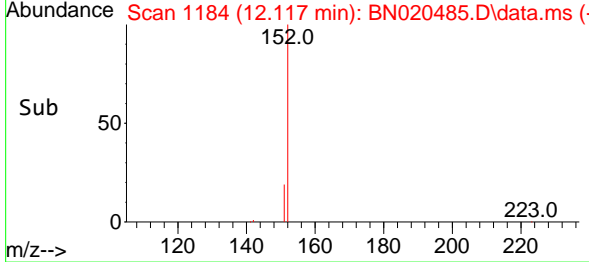
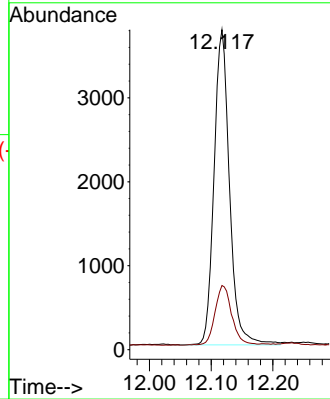
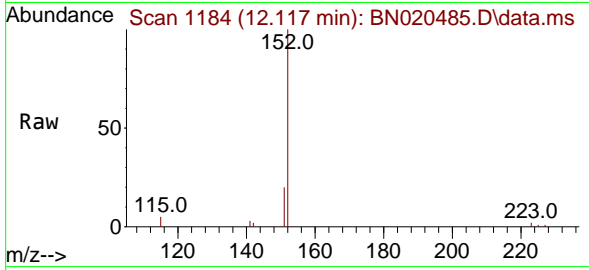




#11
 2-Methylnaphthalene-d10
 Concen: 0.353 ng
 RT: 12.117 min Scan# 1184
 Delta R.T. -0.004 min
 Lab File: BN020485.D
 Acq: 27 Jun 2022 05:45

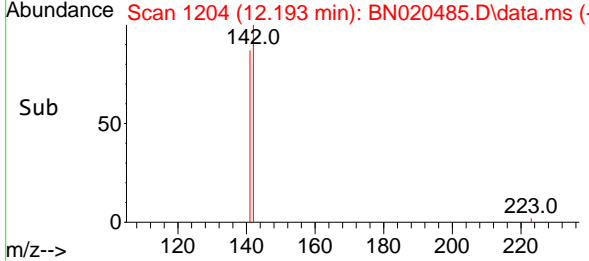
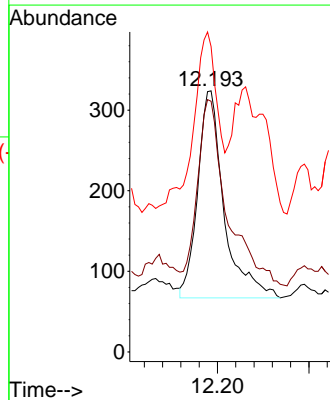
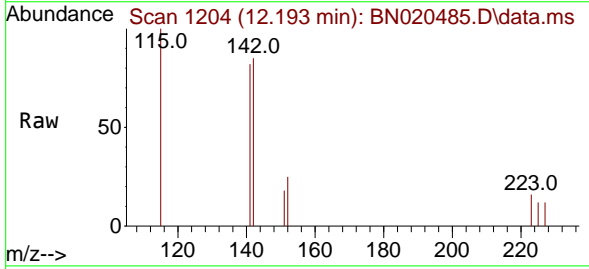
Instrument :
 BNA_N
 ClientSampleId :
 MW-56

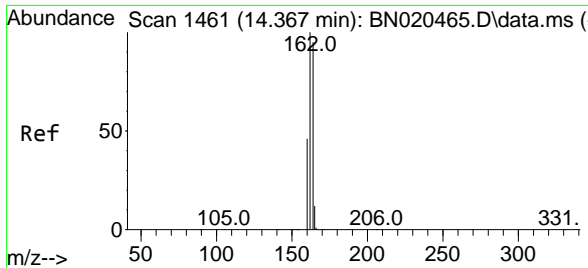
Tgt Ion:152 Resp: 6549
 Ion Ratio Lower Upper
 152 100
 151 20.5 16.2 24.4



#12
 2-Methylnaphthalene
 Concen: 0.024 ng
 RT: 12.193 min Scan# 1204
 Delta R.T. 0.000 min
 Lab File: BN020485.D
 Acq: 27 Jun 2022 05:45

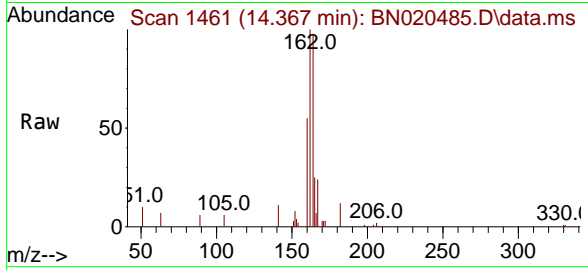
Tgt Ion:142 Resp: 514
 Ion Ratio Lower Upper
 142 100
 141 96.0 71.6 107.4
 115 117.0 29.8 44.8#





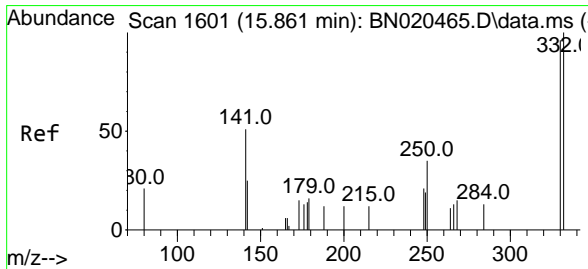
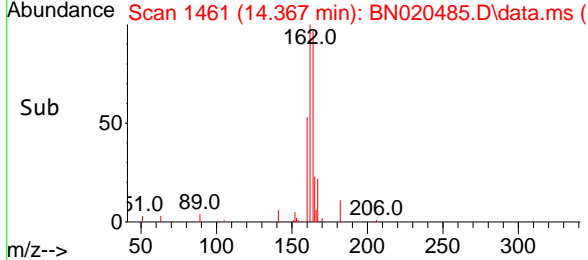
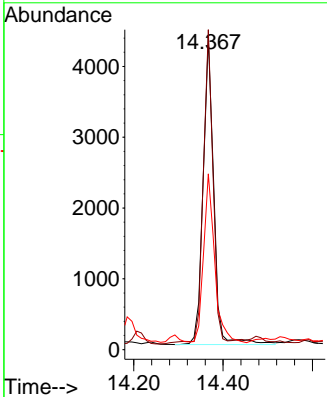
#13
 Acenaphthene-d10
 Concen: 0.400 ng
 RT: 14.367 min Scan# 14
 Delta R.T. 0.000 min
 Lab File: BN020485.D
 Acq: 27 Jun 2022 05:45

Instrument : BNA_N
 ClientSampleId : MW-56

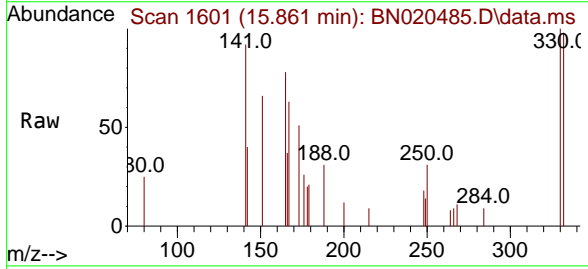


Tgt Ion:164 Resp: 7187

Ion	Ratio	Lower	Upper
164	100		
162	102.6	82.1	123.1
160	56.4	38.6	58.0

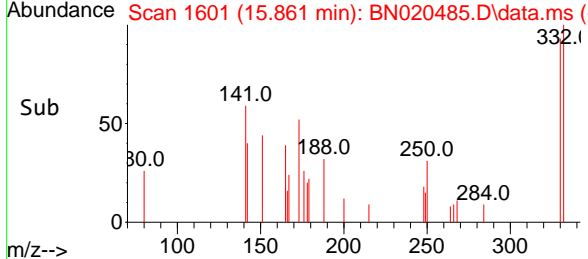
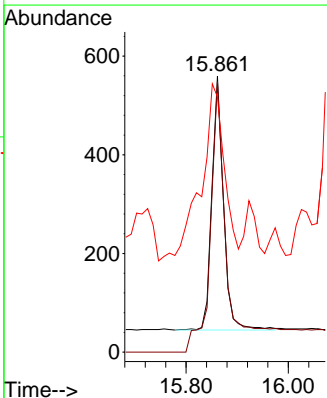


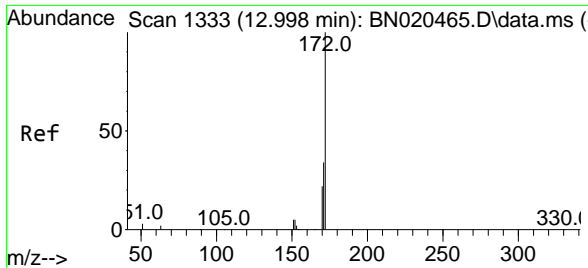
#14
 2,4,6-Tribromophenol
 Concen: 0.304 ng
 RT: 15.861 min Scan# 1601
 Delta R.T. 0.000 min
 Lab File: BN020485.D
 Acq: 27 Jun 2022 05:45



Tgt Ion:330 Resp: 823

Ion	Ratio	Lower	Upper
330	100		
332	150.2	77.6	116.4#
141	127.3	41.0	61.4#

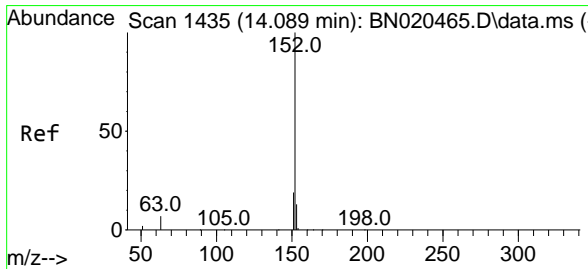
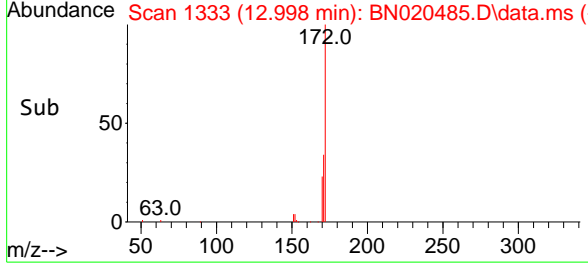
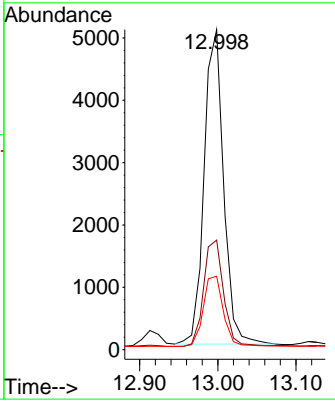
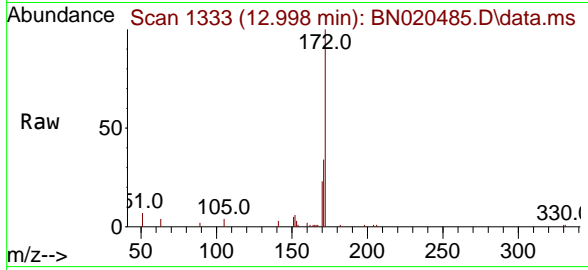




#15
 2-Fluorobiphenyl
 Concen: 0.294 ng
 RT: 12.998 min Scan# 1111
 Delta R.T. 0.000 min
 Lab File: BN020485.D
 Acq: 27 Jun 2022 05:45

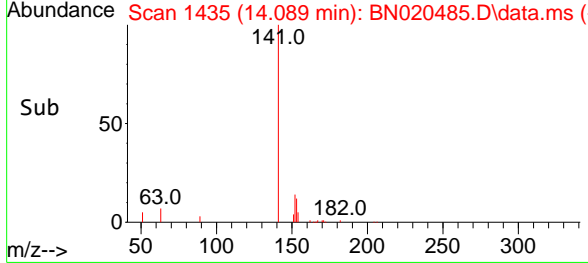
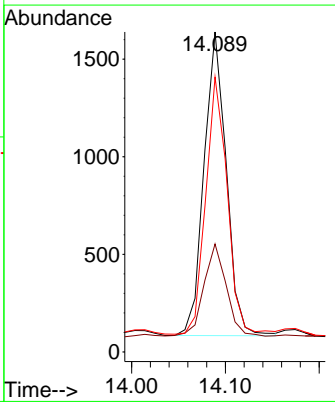
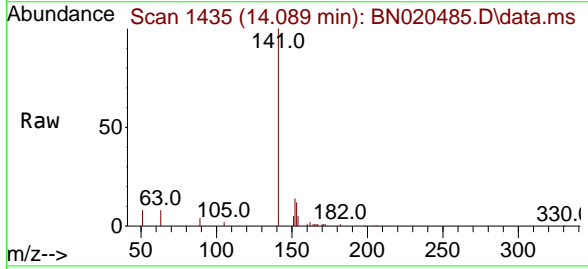
Instrument : BNA_N
 ClientSampleId : MW-56

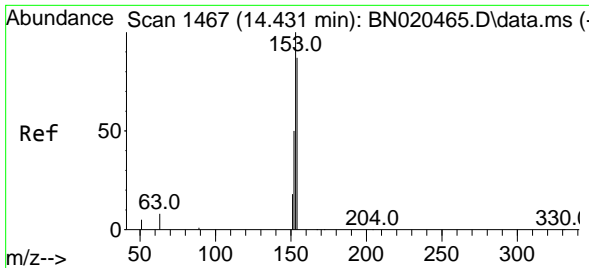
Tgt Ion	Resp	Lower	Upper
172	100		
171	34.2	27.2	40.8
170	23.0	18.2	27.4



#16
 Acenaphthylene
 Concen: 0.074 ng
 RT: 14.089 min Scan# 1435
 Delta R.T. 0.000 min
 Lab File: BN020485.D
 Acq: 27 Jun 2022 05:45

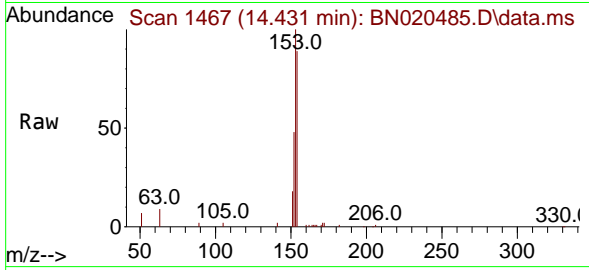
Tgt Ion	Resp	Lower	Upper
152	100		
151	30.5	16.2	24.4#
153	82.0	10.7	16.1#



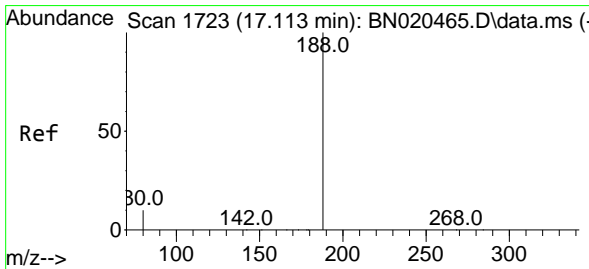
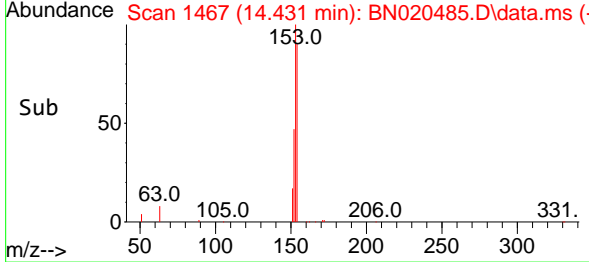
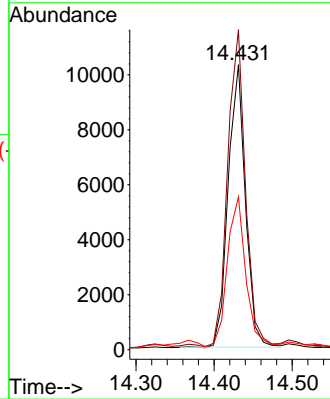


#17
 Acenaphthene
 Concen: 0.673 ng
 RT: 14.431 min Scan# 14
 Delta R.T. 0.000 min
 Lab File: BN020485.D
 Acq: 27 Jun 2022 05:45

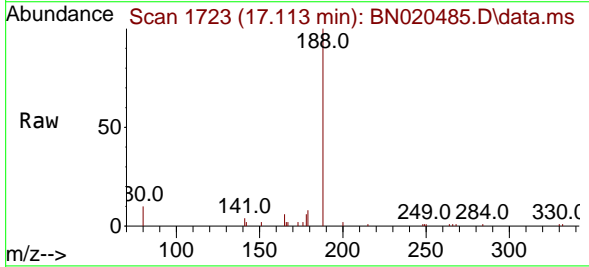
Instrument :
 BNA_N
 ClientSampleId :
 MW-56



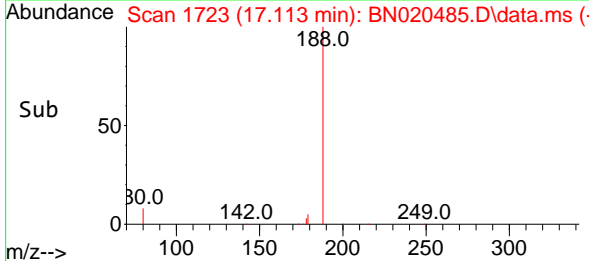
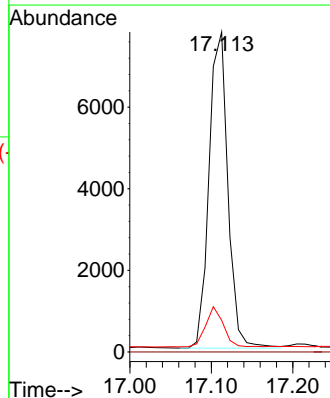
Tgt Ion:154 Resp: 15806
 Ion Ratio Lower Upper
 154 100
 153 115.2 87.5 131.3
 152 55.8 43.8 65.6

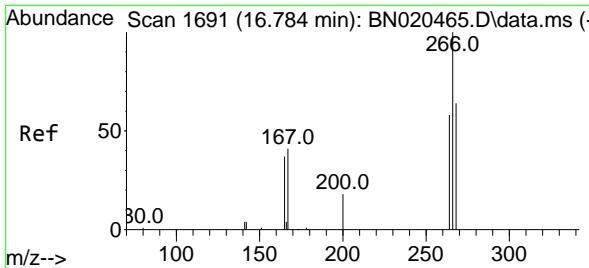


#19
 Phenanthrene-d10
 Concen: 0.400 ng
 RT: 17.113 min Scan# 1723
 Delta R.T. -0.000 min
 Lab File: BN020485.D
 Acq: 27 Jun 2022 05:45



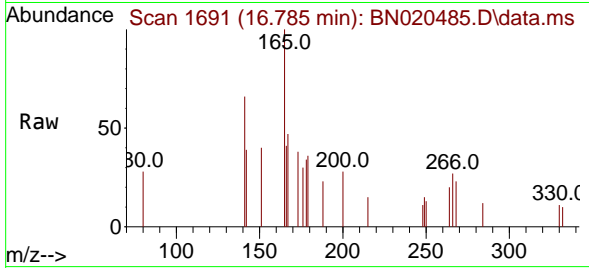
Tgt Ion:188 Resp: 12514
 Ion Ratio Lower Upper
 188 100
 94 0.0 0.0 0.0
 80 9.9 7.4 11.2





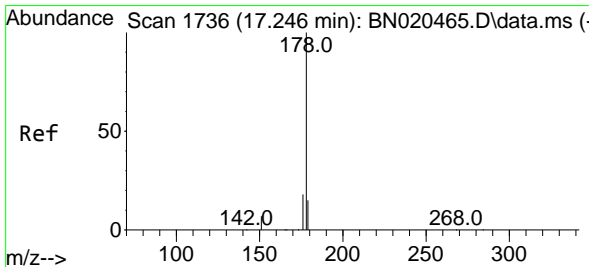
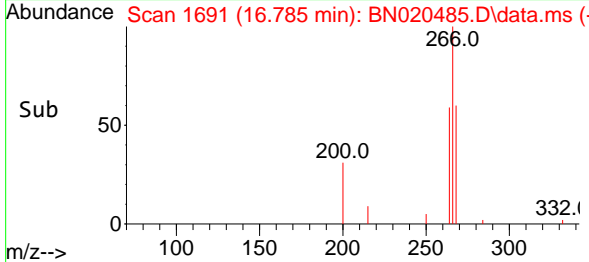
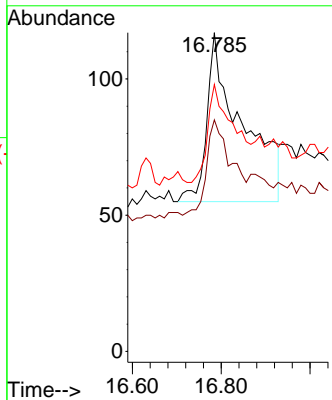
#24
 Pentachlorophenol
 Concen: 0.314 ng
 RT: 16.785 min Scan# 1691
 Delta R.T. 0.001 min
 Lab File: BN020485.D
 Acq: 27 Jun 2022 05:45

Instrument : BNA_N
 ClientSampleId : MW-56



Tgt Ion: 266 Resp: 337

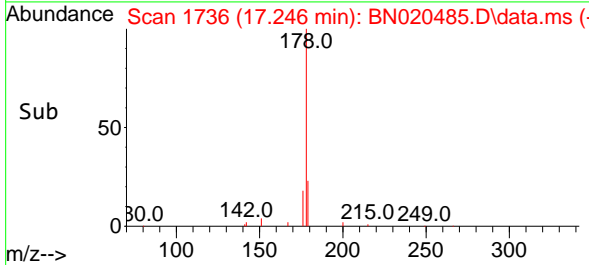
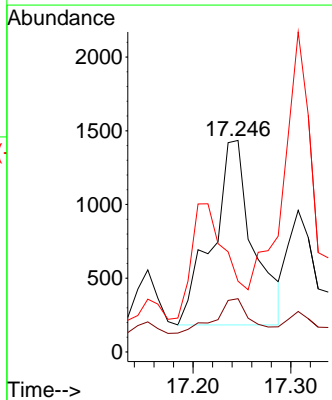
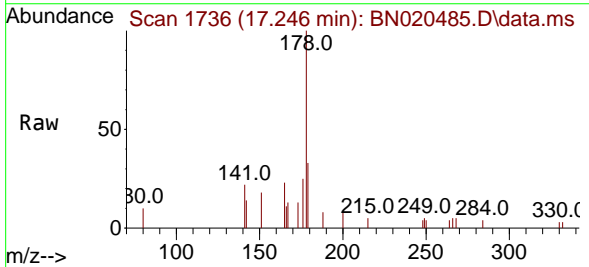
Ion	Ratio	Lower	Upper
266	100		
264	41.5	51.3	76.9#
268	44.8	52.6	79.0#

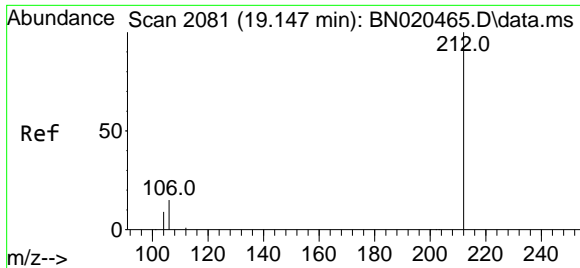


#26
 Anthracene
 Concen: 0.099 ng
 RT: 17.246 min Scan# 1736
 Delta R.T. 0.000 min
 Lab File: BN020485.D
 Acq: 27 Jun 2022 05:45

Tgt Ion: 178 Resp: 3614

Ion	Ratio	Lower	Upper
178	100		
176	15.9	14.9	22.3
179	0.0	12.2	18.4#



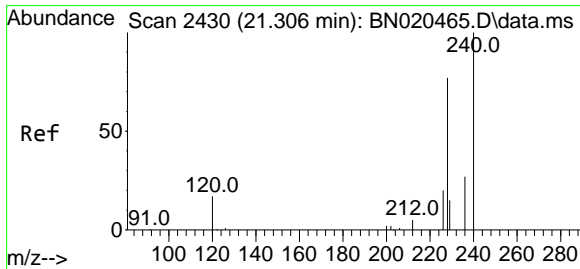
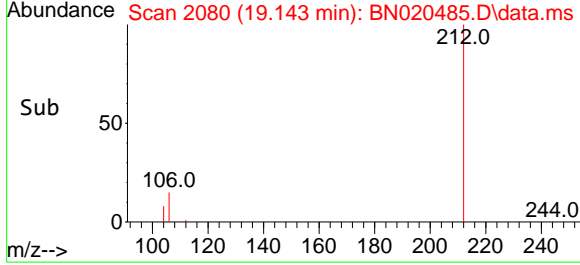
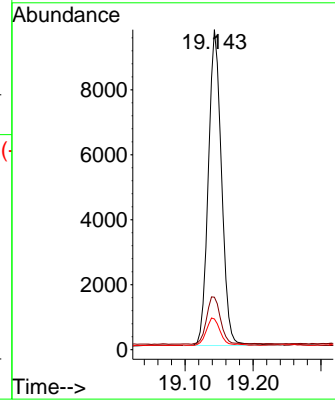
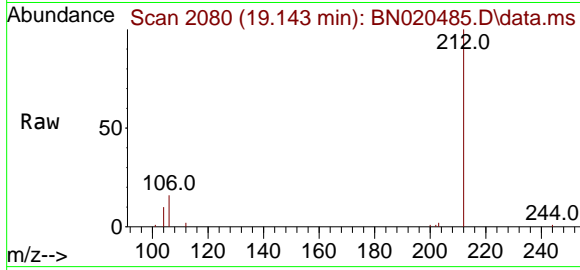


#27
 Fluoranthene-d10
 Concen: 0.353 ng
 RT: 19.143 min Scan# 2080
 Delta R.T. -0.004 min
 Lab File: BN020485.D
 Acq: 27 Jun 2022 05:45

Instrument : BNA_N
 ClientSampleId : MW-56

Tgt Ion:212 Resp: 13118

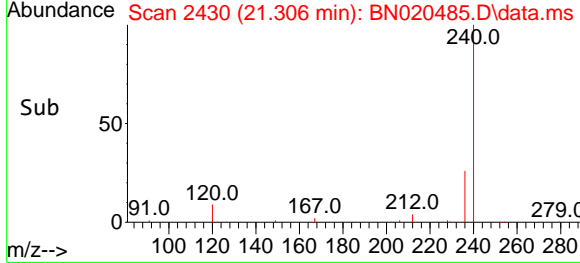
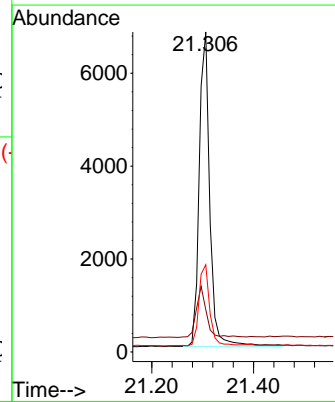
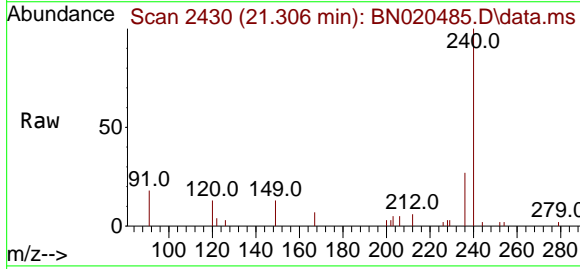
Ion	Ratio	Lower	Upper
212	100		
106	15.8	12.6	19.0
104	9.2	7.2	10.8

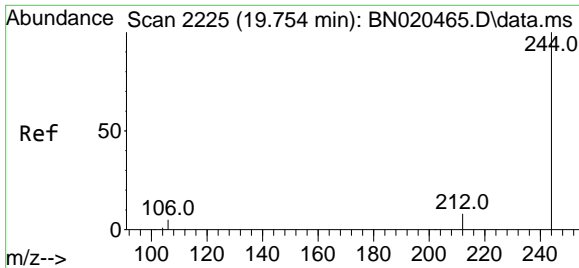


#29
 Chrysene-d12
 Concen: 0.400 ng
 RT: 21.306 min Scan# 2430
 Delta R.T. 0.000 min
 Lab File: BN020485.D
 Acq: 27 Jun 2022 05:45

Tgt Ion:240 Resp: 9707

Ion	Ratio	Lower	Upper
240	100		
120	13.3	14.6	21.8#
236	27.2	22.6	33.8



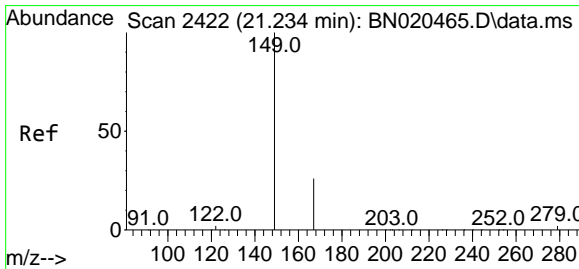
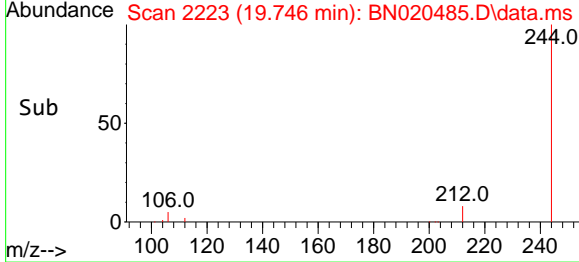
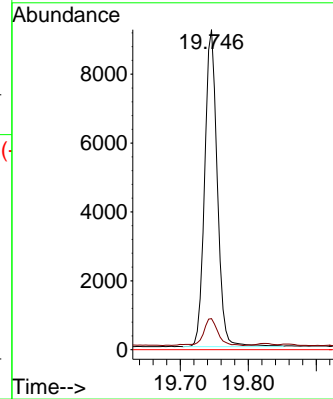
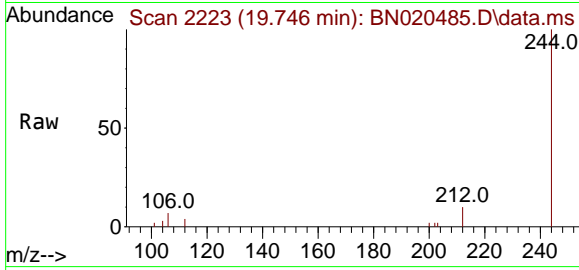


#31
 Terphenyl-d14
 Concen: 0.510 ng
 RT: 19.746 min Scan# 211
 Delta R.T. -0.008 min
 Lab File: BN020485.D
 Acq: 27 Jun 2022 05:45

Instrument : BNA_N
 ClientSampleId : MW-56

Tgt Ion:244 Resp: 11820

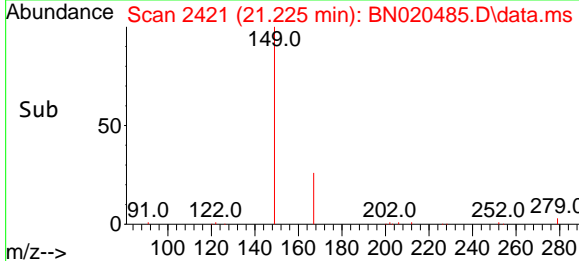
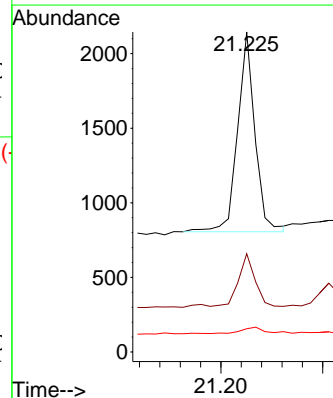
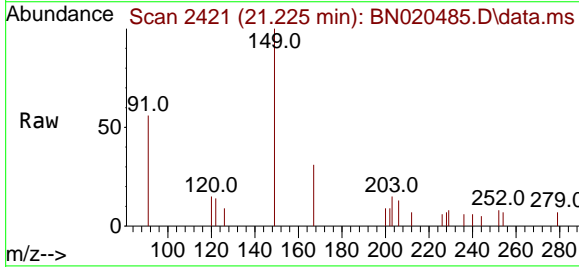
Ion	Ratio	Lower	Upper
244	100		
212	9.7	7.1	10.7
122	0.0	0.0	0.0

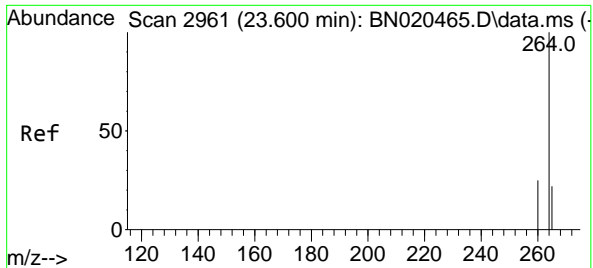


#34
 Bis(2-ethylhexyl)phthalate
 Concen: 0.081 ng
 RT: 21.225 min Scan# 2421
 Delta R.T. -0.009 min
 Lab File: BN020485.D
 Acq: 27 Jun 2022 05:45

Tgt Ion:149 Resp: 1583

Ion	Ratio	Lower	Upper
149	100		
167	25.1	21.7	32.5
279	4.8	2.2	3.2





#35
 Perylene-d12
 Concen: 0.400 ng
 RT: 23.586 min Scan# 2956
 Delta R.T. -0.015 min
 Lab File: BN020485.D
 Acq: 27 Jun 2022 05:45

Instrument : BNA_N
 ClientSampleId : MW-56

Tgt Ion:264 Resp: 7807

Ion	Ratio	Lower	Upper
264	100		
260	26.1	20.9	31.3
265	42.2	28.0	42.0#

