

Data Path : Z:\svoasrv\HPCHEM1\BNA\_N\Data\BN071222\  
 Data File : BN020713.D  
 Acq On : 12 Jul 2022 12:47  
 Operator : CG/JU  
 Sample : PB146111BL  
 Misc :  
 ALS Vial : 3 Sample Multiplier: 1

Instrument :  
 BNA\_N  
 ClientSampleId :  
 PB146111BL

Quant Time: Jul 13 02:41:16 2022  
 Quant Method : Z:\SVOASRV\HPCHEM1\BNA\_N\METHODS\8270-SIM-BN062622.M  
 Quant Title : ASP BNA STANDARDS FOR 5 POINT CALIBRATION  
 QLast Update : Sat Jul 02 03:10:12 2022  
 Response via : Initial Calibration

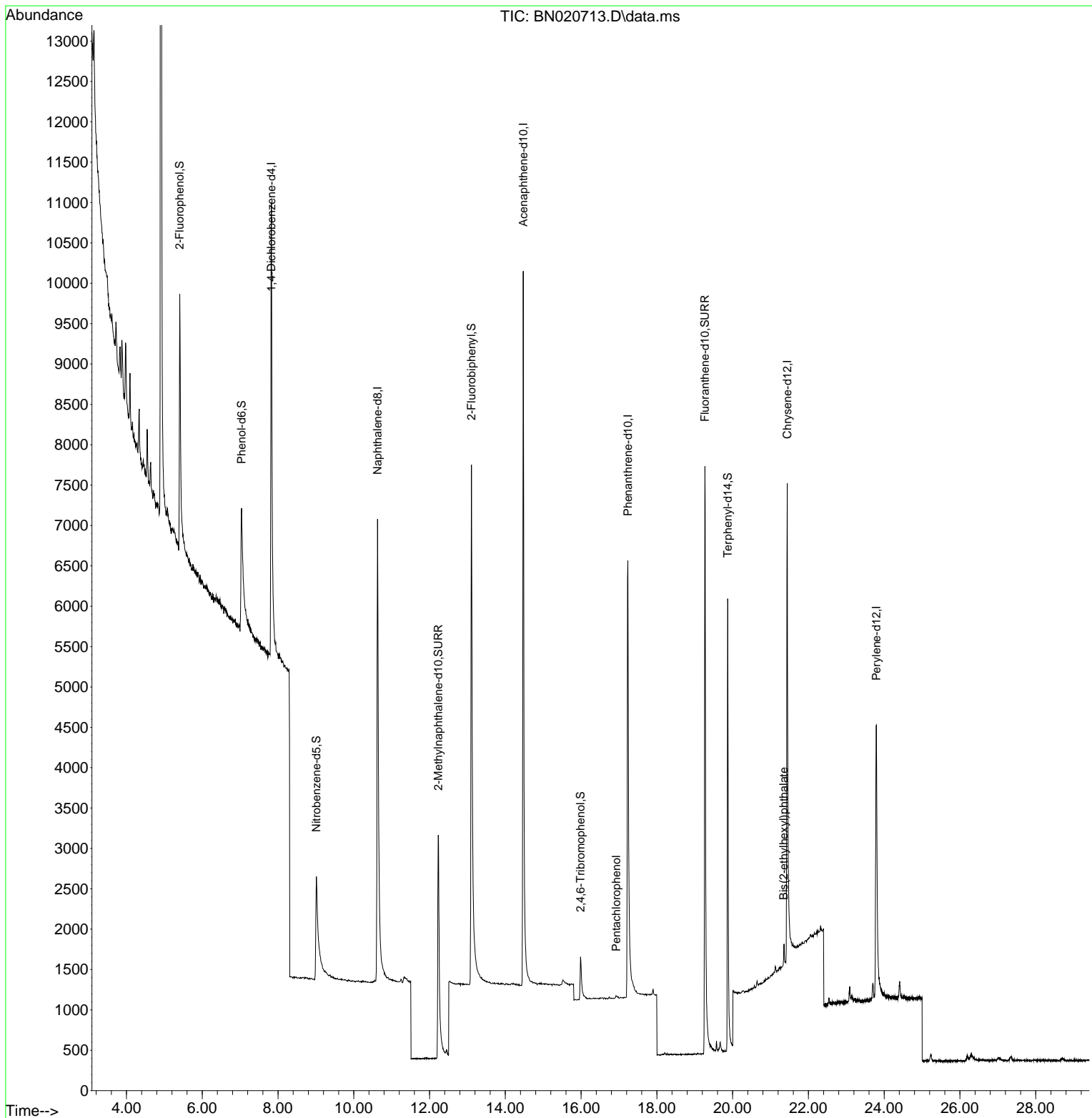
Compound	R.T.	QIon	Response	Conc	Units	Dev(Min)	
Internal Standards							
1) 1,4-Dichlorobenzene-d4	7.826	152	4304	0.400	ng	0.00	
7) Naphthalene-d8	10.626	136	12285	0.400	ng	# 0.00	
13) Acenaphthene-d10	14.474	164	6631	0.400	ng	0.00	
19) Phenanthrene-d10	17.236	188	12280	0.400	ng	# 0.01	
29) Chrysene-d12	21.440	240	8210	0.400	ng	# 0.00	
35) Perylene-d12	23.793	264	6662	0.400	ng	# 0.00	
System Monitoring Compounds							
4) 2-Fluorophenol	5.406	112	3663	0.307	ng	0.00	
5) Phenol-d6	7.038	99	3377	0.237	ng	0.00	
8) Nitrobenzene-d5	9.014	82	2582	0.259	ng	0.02	
11) 2-Methylnaphthalene-d10	12.231	152	6834	0.325	ng	0.00	
14) 2,4,6-Tribromophenol	15.985	330	449	0.180	ng	0.01	
15) 2-Fluorobiphenyl	13.105	172	8849	0.323	ng	0.00	
27) Fluoranthene-d10	19.270	212	11592	0.318	ng	0.00	
31) Terphenyl-d14	19.872	244	8196	0.418	ng	0.00	
Target Compounds							
24) Pentachlorophenol	16.928	266	41	0.200	ng	# 64	Qvalue
34) Bis(2-ethylhexyl)phtha...	21.351	149	342	0.021	ng	# 93	

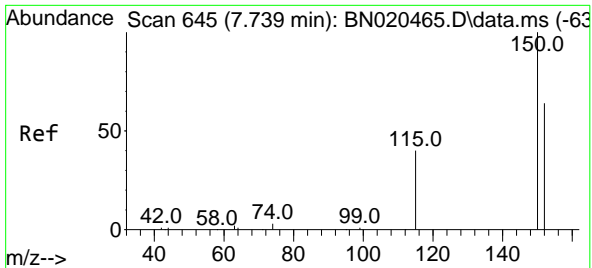
(#) = qualifier out of range (m) = manual integration (+) = signals summed

Data Path : Z:\svoasrv\HPCHEM1\BNA\_N\Data\BN071222\  
 Data File : BN020713.D  
 Acq On : 12 Jul 2022 12:47  
 Operator : CG/JU  
 Sample : PB146111BL  
 Misc :  
 ALS Vial : 3 Sample Multiplier: 1

Instrument :  
 BNA\_N  
 ClientSampleId :  
 PB146111BL

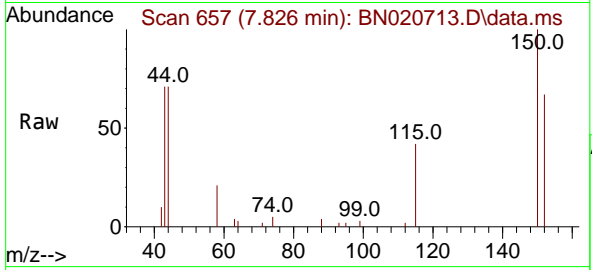
Quant Time: Jul 13 02:41:16 2022  
 Quant Method : Z:\SVOASRV\HPCHEM1\BNA\_N\METHODS\8270-SIM-BN062622.M  
 Quant Title : ASP BNA STANDARDS FOR 5 POINT CALIBRATION  
 QLast Update : Sat Jul 02 03:10:12 2022  
 Response via : Initial Calibration



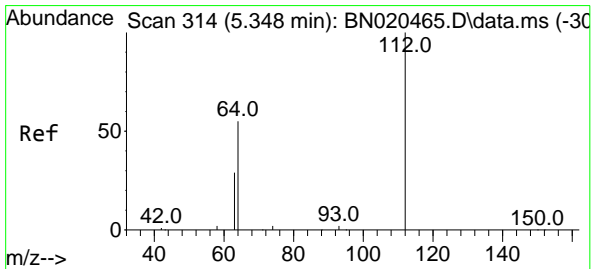
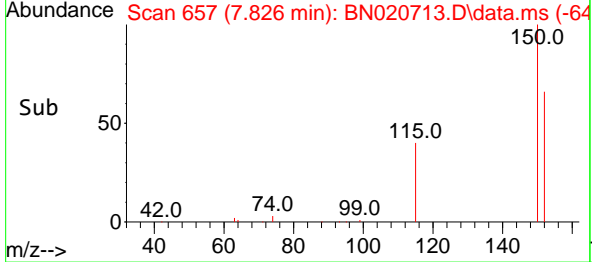
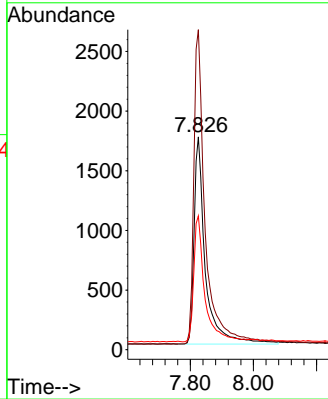


#1  
 1,4-Dichlorobenzene-d4  
 Concen: 0.400 ng  
 RT: 7.826 min Scan# 61  
 Delta R.T. 0.001 min  
 Lab File: BN020713.D  
 Acq: 12 Jul 2022 12:47

Instrument :  
 BNA\_N  
 ClientSampleId :  
 PB146111BL

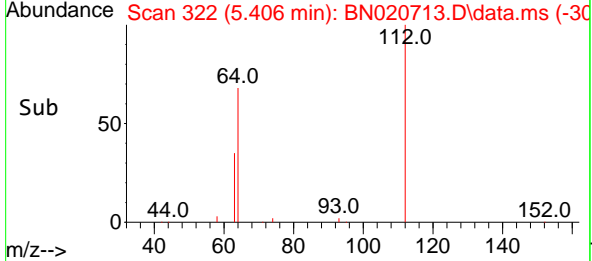
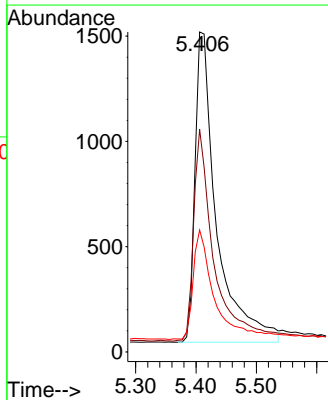
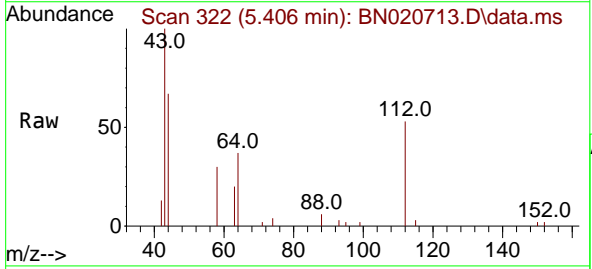


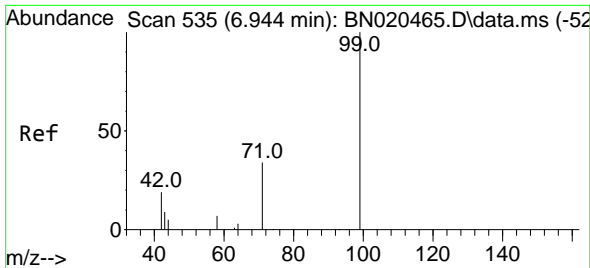
Tgt Ion:152 Resp: 4304  
 Ion Ratio Lower Upper  
 152 100  
 150 150.3 127.9 191.9  
 115 62.9 51.4 77.2



#4  
 2-Fluorophenol  
 Concen: 0.307 ng  
 RT: 5.406 min Scan# 322  
 Delta R.T. -0.007 min  
 Lab File: BN020713.D  
 Acq: 12 Jul 2022 12:47

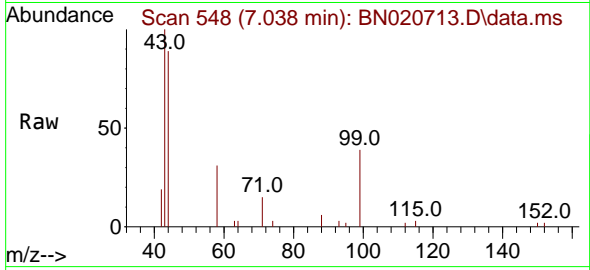
Tgt Ion:112 Resp: 3663  
 Ion Ratio Lower Upper  
 112 100  
 64 64.5 49.1 73.7  
 63 35.1 26.3 39.5





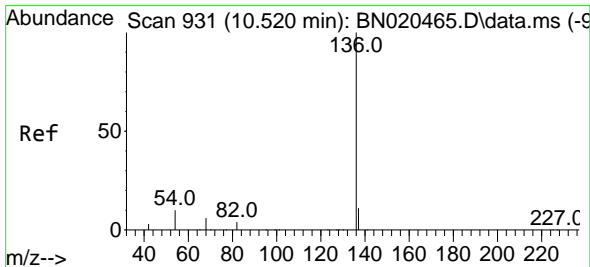
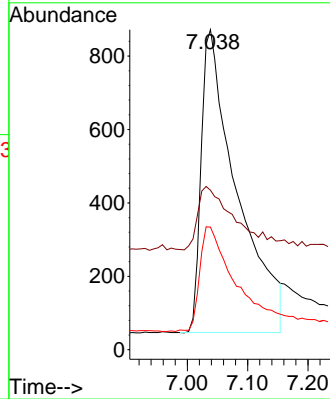
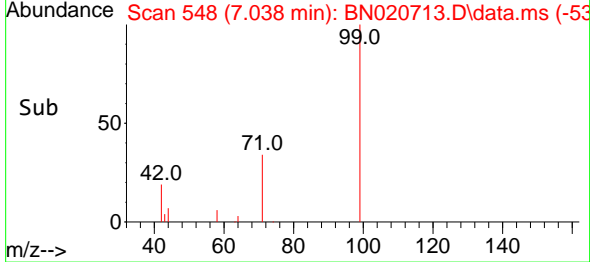
#5  
 Phenol-d6  
 Concen: 0.237 ng  
 RT: 7.038 min Scan# 54  
 Delta R.T. 0.007 min  
 Lab File: BN020713.D  
 Acq: 12 Jul 2022 12:47

Instrument :  
 BNA\_N  
 ClientSampleId :  
 PB146111BL

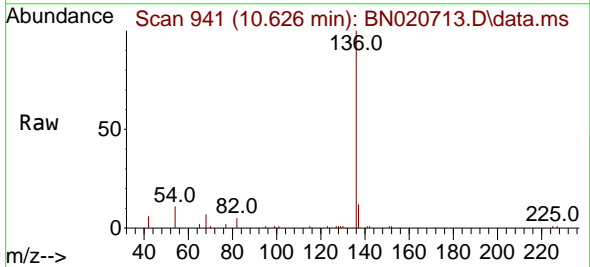


Tgt Ion: 99 Resp: 3377

Ion	Ratio	Lower	Upper
99	100		
42	21.9	19.3	28.9
71	35.6	27.5	41.3

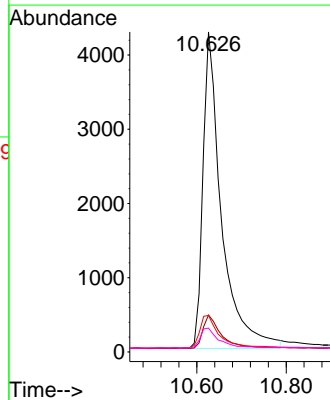
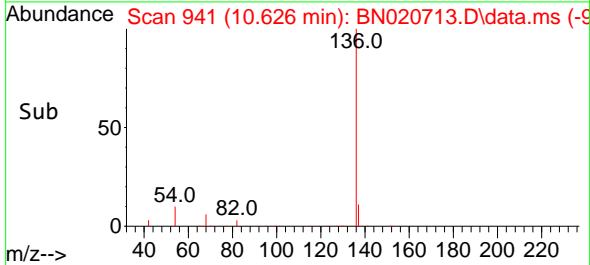


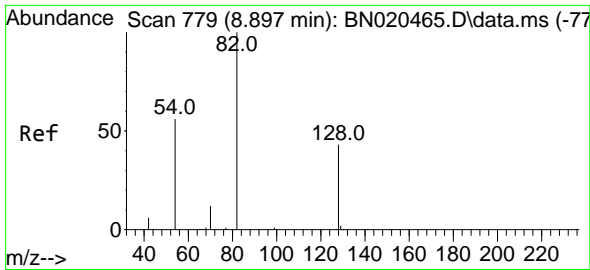
#7  
 Naphthalene-d8  
 Concen: 0.400 ng  
 RT: 10.626 min Scan# 941  
 Delta R.T. 0.000 min  
 Lab File: BN020713.D  
 Acq: 12 Jul 2022 12:47



Tgt Ion: 136 Resp: 12285

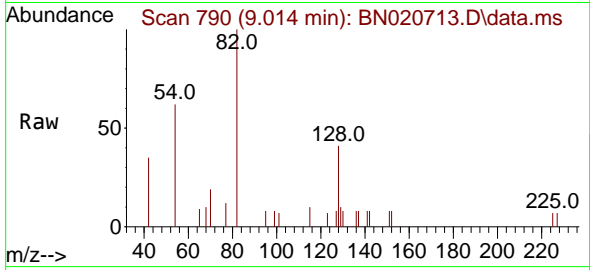
Ion	Ratio	Lower	Upper
136	100		
137	11.6	9.0	13.6
54	11.4	6.2	9.2#
68	7.5	4.4	6.6#



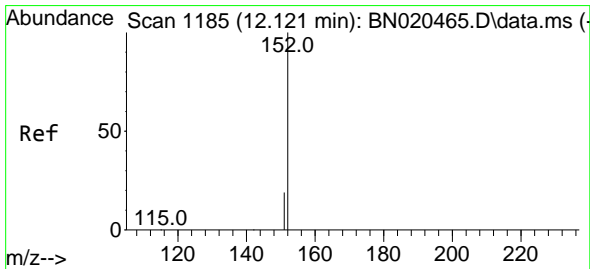
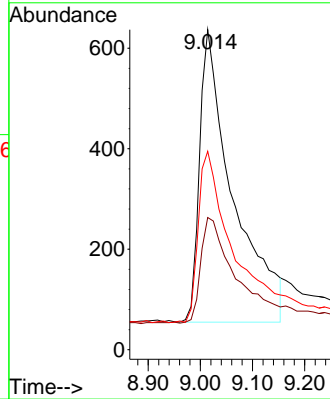
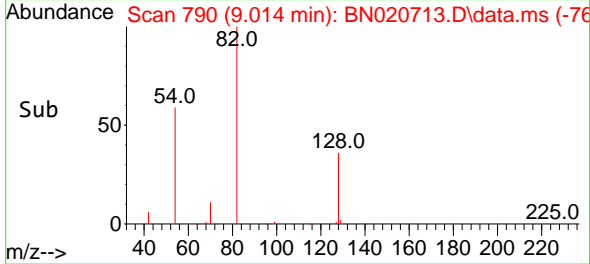


#8  
 Nitrobenzene-d5  
 Concen: 0.259 ng  
 RT: 9.014 min Scan# 790  
 Delta R.T. 0.022 min  
 Lab File: BN020713.D  
 Acq: 12 Jul 2022 12:47

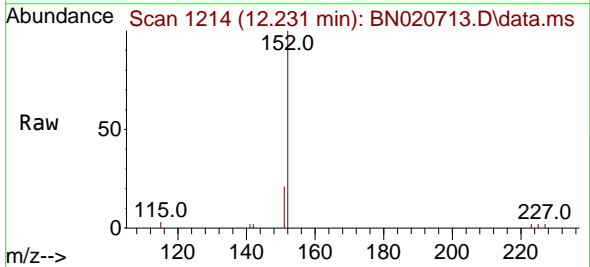
Instrument :  
 BNA\_N  
 ClientSampleId :  
 PB146111BL



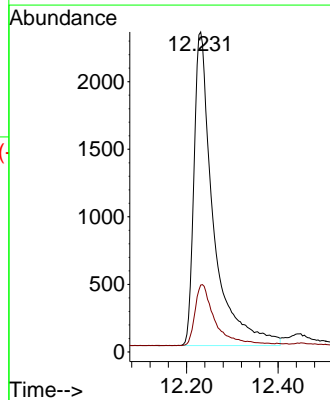
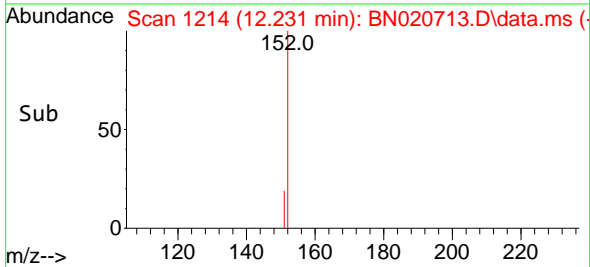
Tgt Ion: 82 Resp: 2582  
 Ion Ratio Lower Upper  
 82 100  
 128 41.3 35.0 52.6  
 54 62.0 46.2 69.4

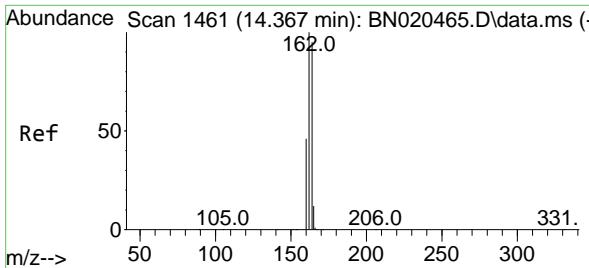


#11  
 2-Methylnaphthalene-d10  
 Concen: 0.325 ng  
 RT: 12.231 min Scan# 1214  
 Delta R.T. 0.004 min  
 Lab File: BN020713.D  
 Acq: 12 Jul 2022 12:47



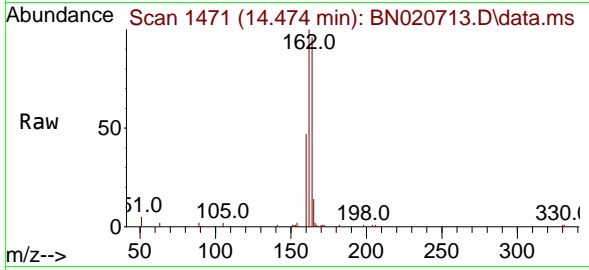
Tgt Ion: 152 Resp: 6834  
 Ion Ratio Lower Upper  
 152 100  
 151 20.5 16.2 24.4



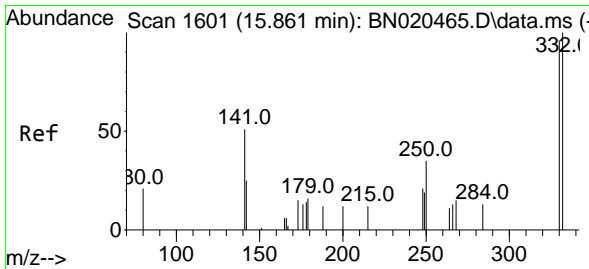
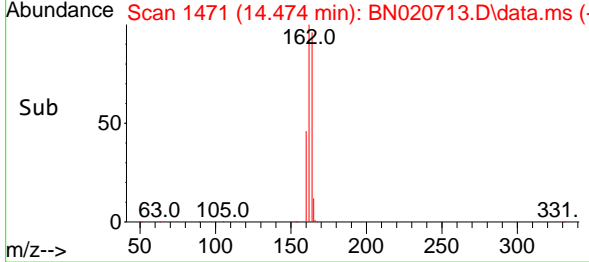
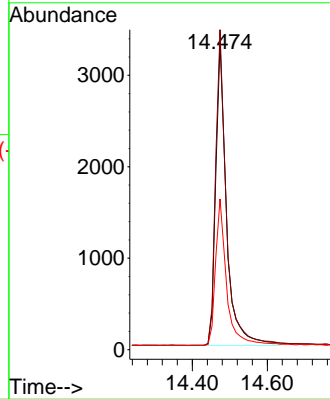


#13  
 Acenaphthene-d10  
 Concen: 0.400 ng  
 RT: 14.474 min Scan# 14  
 Delta R.T. 0.000 min  
 Lab File: BN020713.D  
 Acq: 12 Jul 2022 12:47

Instrument :  
 BNA\_N  
 ClientSampleId :  
 PB146111BL

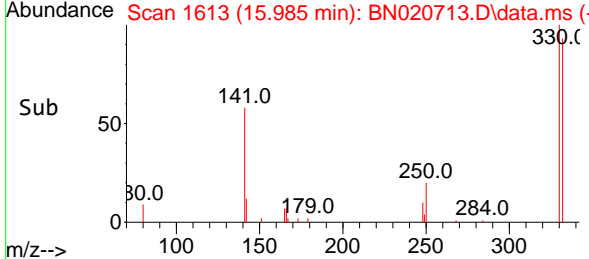
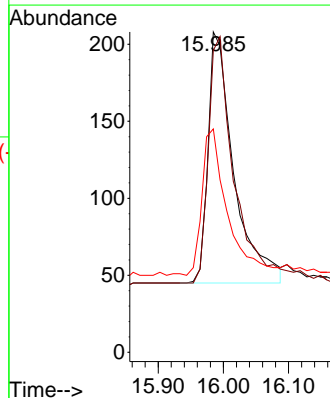
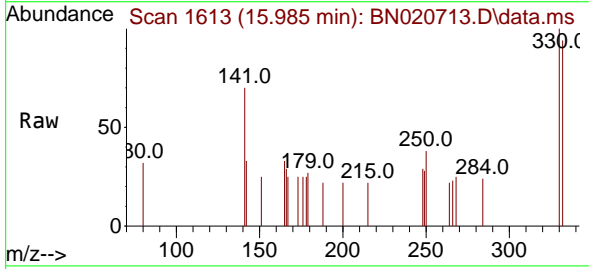


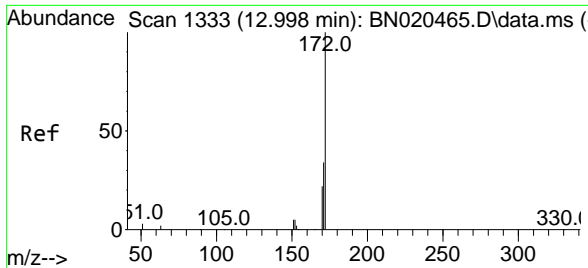
Tgt Ion:164 Resp: 6631  
 Ion Ratio Lower Upper  
 164 100  
 162 104.2 82.1 123.1  
 160 49.1 38.6 58.0



#14  
 2,4,6-Tribromophenol  
 Concen: 0.180 ng  
 RT: 15.985 min Scan# 1613  
 Delta R.T. 0.010 min  
 Lab File: BN020713.D  
 Acq: 12 Jul 2022 12:47

Tgt Ion:330 Resp: 449  
 Ion Ratio Lower Upper  
 330 100  
 332 97.1 77.6 116.4  
 141 55.0 41.0 61.4



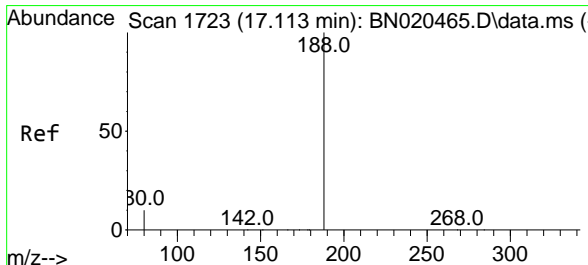
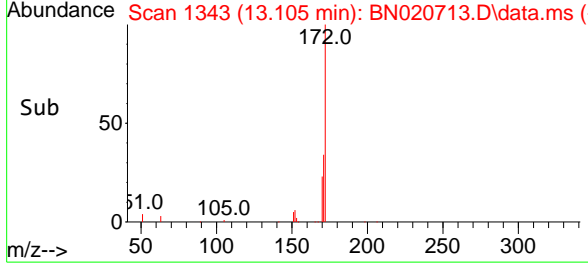
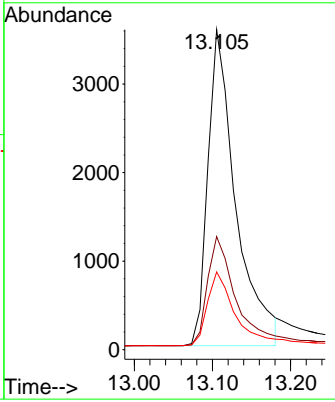
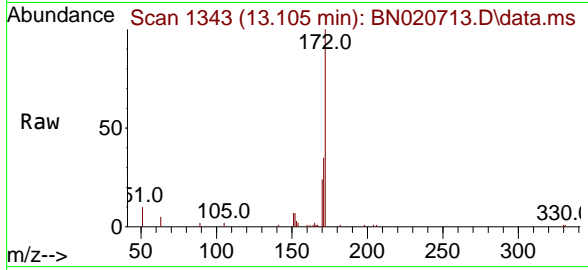


#15  
 2-Fluorobiphenyl  
 Concen: 0.323 ng  
 RT: 13.105 min Scan# 11  
 Delta R.T. 0.000 min  
 Lab File: BN020713.D  
 Acq: 12 Jul 2022 12:47

Instrument : BNA\_N  
 Client Sample Id : PB146111BL

Tgt Ion:172 Resp: 8849

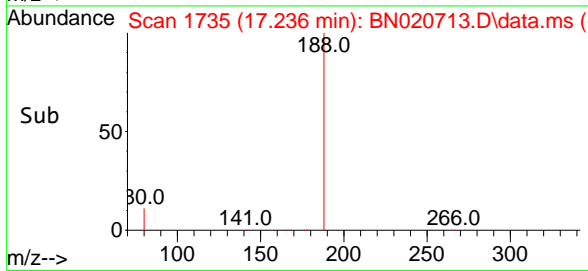
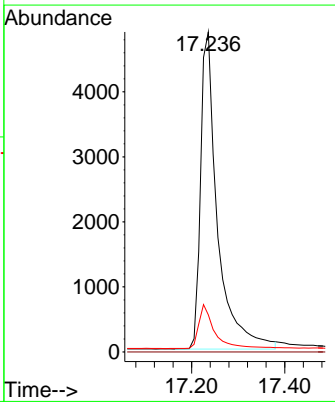
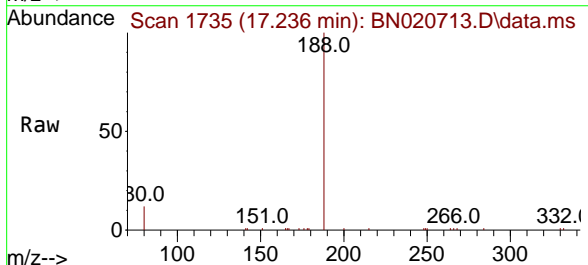
Ion	Ratio	Lower	Upper
172	100		
171	35.3	27.2	40.8
170	24.3	18.2	27.4

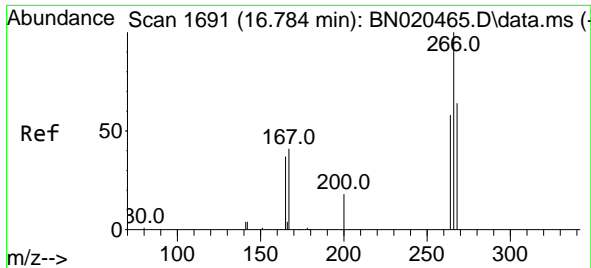


#19  
 Phenanthrene-d10  
 Concen: 0.400 ng  
 RT: 17.236 min Scan# 1735  
 Delta R.T. 0.010 min  
 Lab File: BN020713.D  
 Acq: 12 Jul 2022 12:47

Tgt Ion:188 Resp: 12280

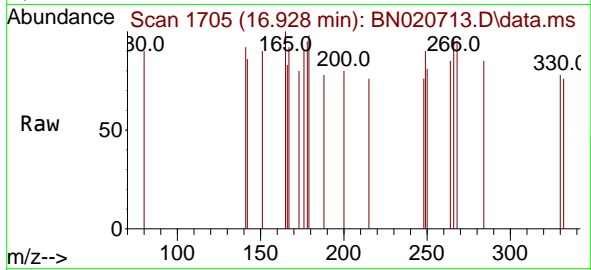
Ion	Ratio	Lower	Upper
188	100		
94	0.0	0.0	0.0
80	11.6	7.4	11.2



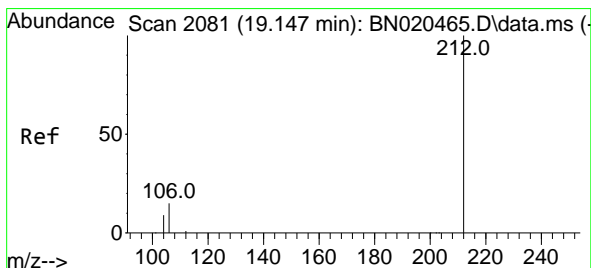
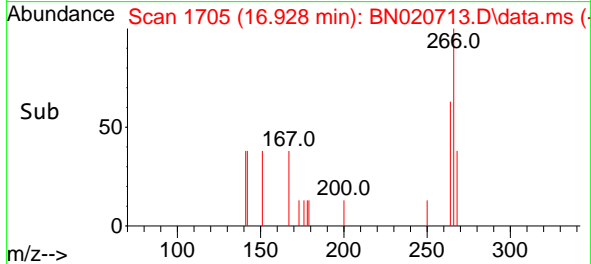
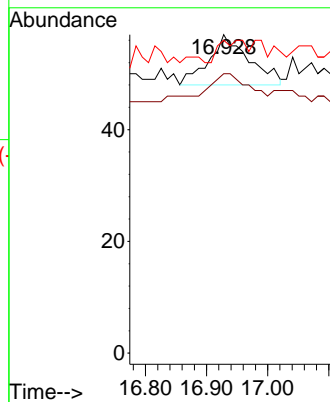


#24  
 Pentachlorophenol  
 Concen: 0.200 ng  
 RT: 16.928 min Scan# 111  
 Delta R.T. 0.031 min  
 Lab File: BN020713.D  
 Acq: 12 Jul 2022 12:47

Instrument :  
 BNA\_N  
 ClientSampleId :  
 PB146111BL

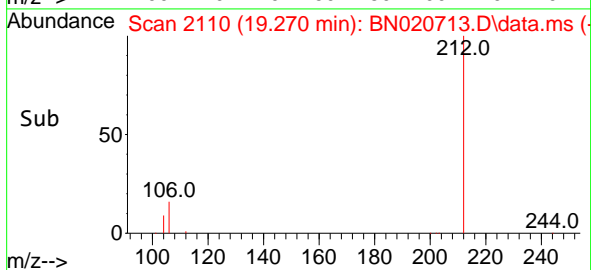
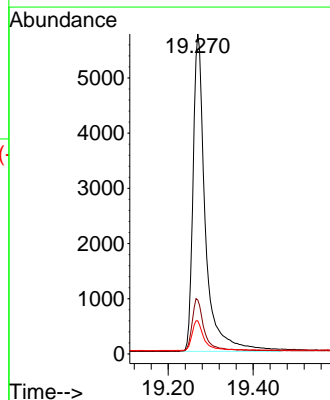
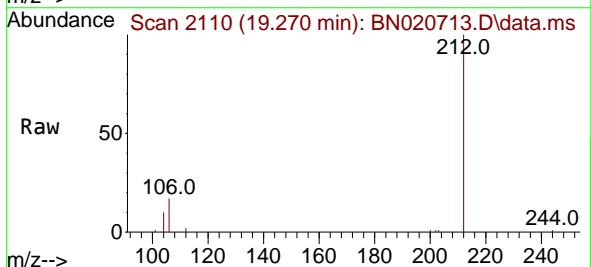


Tgt Ion:266 Resp: 41  
 Ion Ratio Lower Upper  
 266 100  
 264 43.9 51.3 76.9#  
 268 29.3 52.6 79.0#

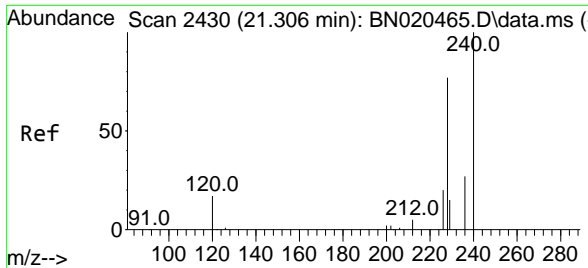


#27  
 Fluoranthene-d10  
 Concen: 0.318 ng  
 RT: 19.270 min Scan# 2110  
 Delta R.T. 0.000 min  
 Lab File: BN020713.D  
 Acq: 12 Jul 2022 12:47

Tgt Ion:212 Resp: 11592  
 Ion Ratio Lower Upper  
 212 100  
 106 16.0 12.6 19.0  
 104 9.1 7.2 10.8





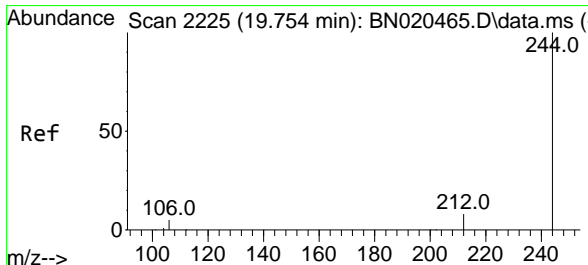
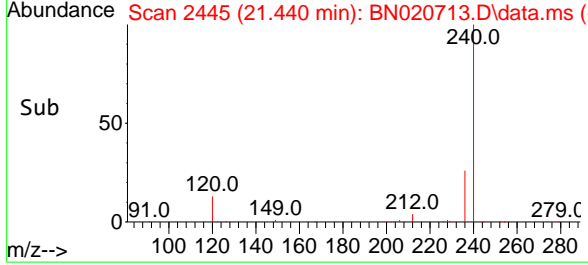
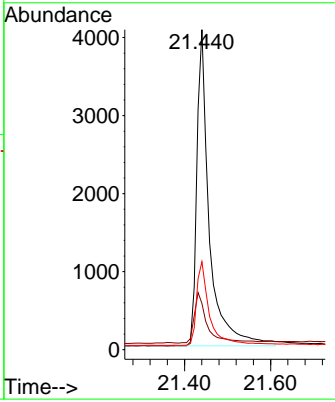
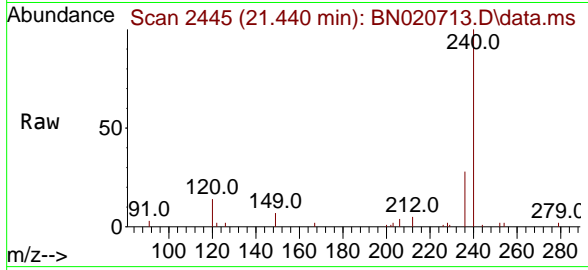


#29  
 Chrysene-d12  
 Concen: 0.400 ng  
 RT: 21.440 min Scan# 2430  
 Delta R.T. 0.009 min  
 Lab File: BN020713.D  
 Acq: 12 Jul 2022 12:47

Instrument : BNA\_N  
 ClientSampleId : PB146111BL

Tgt Ion:240 Resp: 8210

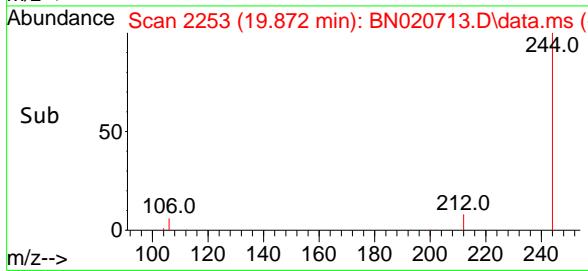
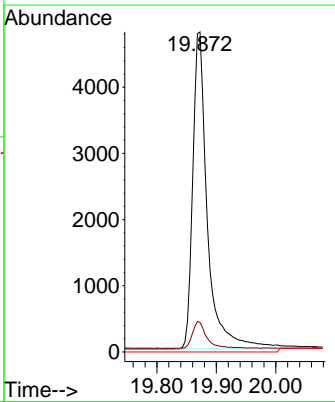
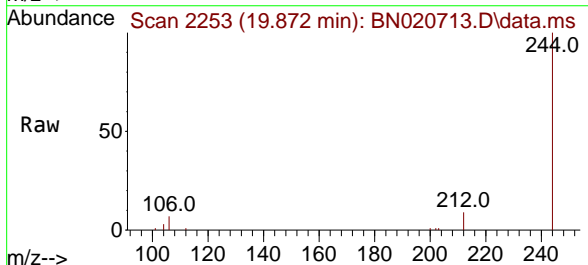
Ion	Ratio	Lower	Upper
240	100		
120	14.5	14.6	21.8#
236	27.5	22.6	33.8

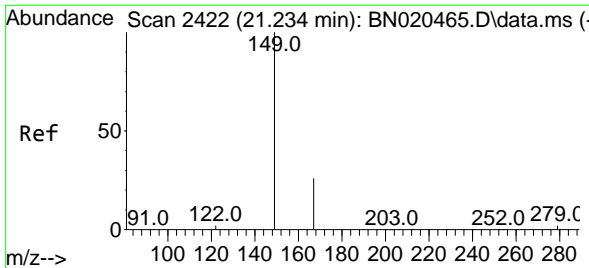


#31  
 Terphenyl-d14  
 Concen: 0.418 ng  
 RT: 19.872 min Scan# 2253  
 Delta R.T. 0.000 min  
 Lab File: BN020713.D  
 Acq: 12 Jul 2022 12:47

Tgt Ion:244 Resp: 8196

Ion	Ratio	Lower	Upper
244	100		
212	9.2	7.1	10.7
122	0.0	0.0	0.0

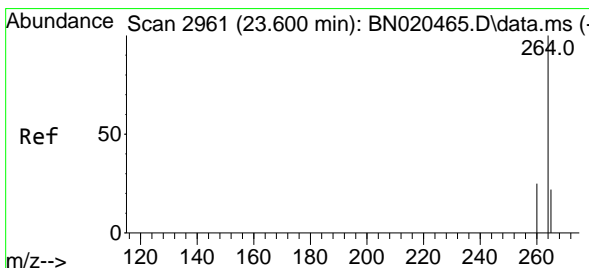
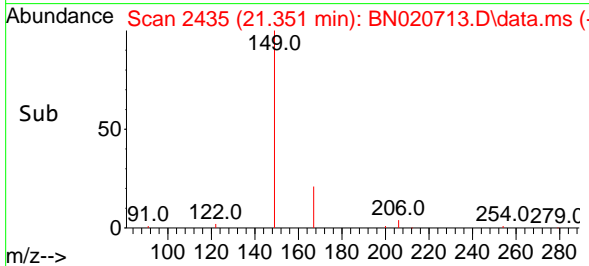
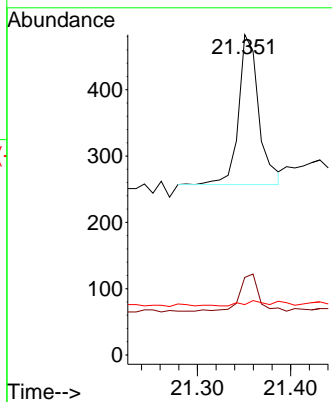
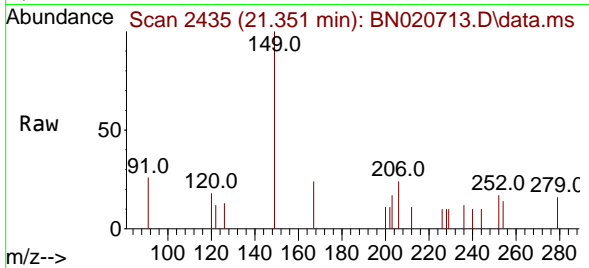




#34  
 Bis(2-ethylhexyl)phthalate  
 Concen: 0.021 ng  
 RT: 21.351 min Scan# 24  
 Delta R.T. 0.000 min  
 Lab File: BN020713.D  
 Acq: 12 Jul 2022 12:47

Instrument :  
 BNA\_N  
 ClientSampleId :  
 PB146111BL

Tgt Ion	Resp	Lower	Upper
149	100		
167	23.1	21.7	32.5
279	3.5	2.2	3.2#



#35  
 Perylene-d12  
 Concen: 0.400 ng  
 RT: 23.793 min Scan# 3027  
 Delta R.T. 0.003 min  
 Lab File: BN020713.D  
 Acq: 12 Jul 2022 12:47

Tgt Ion	Resp	Lower	Upper
264	100		
260	26.6	20.9	31.3
265	42.1	28.0	42.0#

