

Data Path : Z:\svoasrv\HPCHEM1\BNA_N\Data\BN071222\
 Data File : BN020714.D
 Acq On : 12 Jul 2022 13:28
 Operator : CG/JU
 Sample : N3636-05
 Misc :
 ALS Vial : 4 Sample Multiplier: 1

Instrument :
 BNA_N
 ClientSampleId :
 EB-01-070722

Quant Time: Jul 13 02:41:20 2022
 Quant Method : Z:\SVOASRV\HPCHEM1\BNA_N\METHODS\8270-SIM-BN062622.M
 Quant Title : ASP BNA STANDARDS FOR 5 POINT CALIBRATION
 QLast Update : Sat Jul 02 03:10:12 2022
 Response via : Initial Calibration

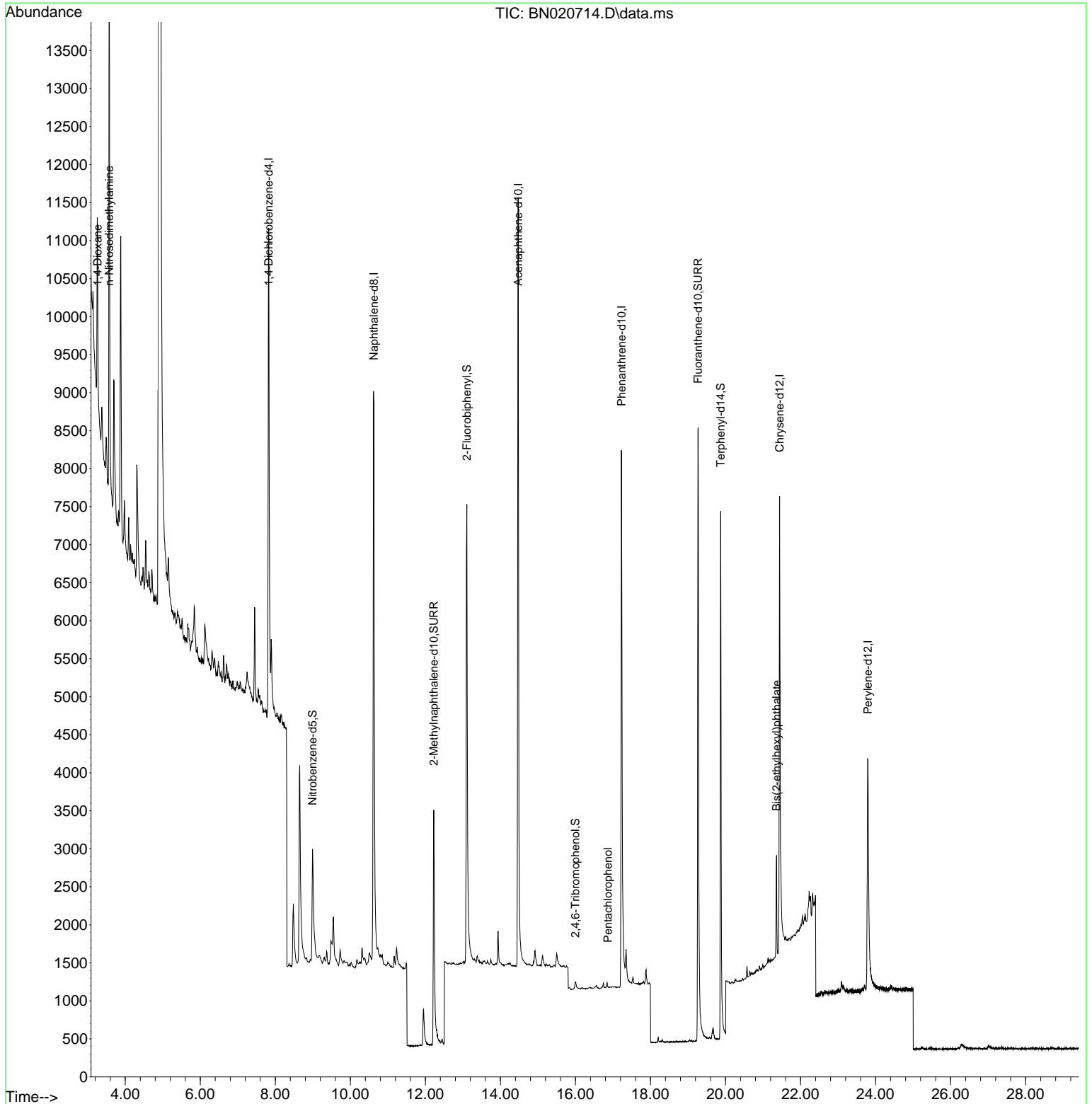
Compound	R.T.	QIon	Response	Conc	Units	Dev(Min)
Internal Standards						
1) 1,4-Dichlorobenzene-d4	7.825	152	4301	0.400	ng	0.00
7) Naphthalene-d8	10.626	136	13081	0.400	ng	0.00
13) Acenaphthene-d10	14.474	164	6984	0.400	ng	0.00
19) Phenanthrene-d10	17.225	188	13151	0.400	ng	# 0.00
29) Chrysene-d12	21.440	240	7968	0.400	ng	0.00
35) Perylene-d12	23.793	264	6088	0.400	ng	# 0.00
System Monitoring Compounds						
4) 2-Fluorophenol	5.428	112	236	0.020	ng	0.01
5) Phenol-d6	7.074	99	189	0.013	ng	0.04
8) Nitrobenzene-d5	8.993	82	2115	0.200	ng	0.00
11) 2-Methylnaphthalene-d10	12.223	152	6150	0.274	ng	0.00
14) 2,4,6-Tribromophenol	15.995	330	69	0.026	ng	0.02
15) 2-Fluorobiphenyl	13.105	172	7481	0.259	ng	0.00
27) Fluoranthene-d10	19.269	212	12361	0.316	ng	0.00
31) Terphenyl-d14	19.872	244	9882	0.519	ng	0.00
Target Compounds						
2) 1,4-Dioxane	3.261	88	1285	0.228	ng	# 73
3) n-Nitrosodimethylamine	3.571	42	528	0.103	ng	# 1
24) Pentachlorophenol	16.866	266	6	0.186	ng	# 18
34) Bis(2-ethylhexyl)phtha...	21.360	149	1407	0.088	ng	# 97

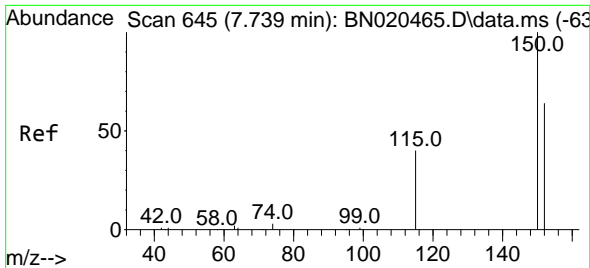
(#) = qualifier out of range (m) = manual integration (+) = signals summed

Data Path : Z:\svoasrv\HPCHEM1\BNA_N\Data\BN071222\
 Data File : BN020714.D
 Acq On : 12 Jul 2022 13:28
 Operator : CG/JU
 Sample : N3636-05
 Misc :
 ALS Vial : 4 Sample Multiplier: 1

Instrument :
 BNA_N
 ClientSampleId :
 EB-01-070722

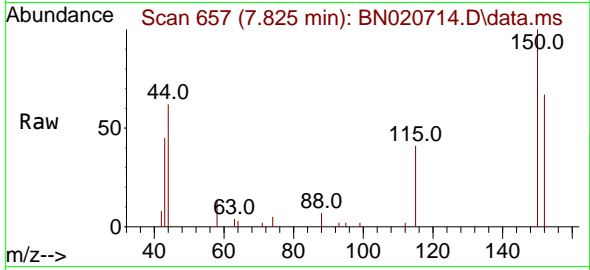
Quant Time: Jul 13 02:41:20 2022
 Quant Method : Z:\SVOASRV\HPCHEM1\BNA_N\METHODS\8270-SIM-BN062622.M
 Quant Title : ASP BNA STANDARDS FOR 5 POINT CALIBRATION
 QLast Update : Sat Jul 02 03:10:12 2022
 Response via : Initial Calibration



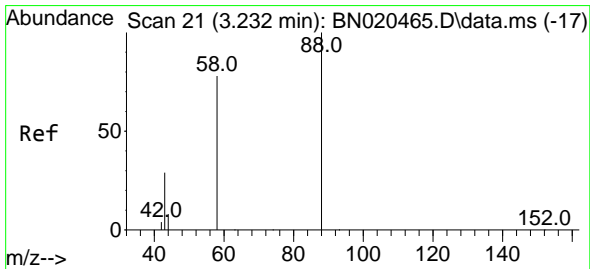
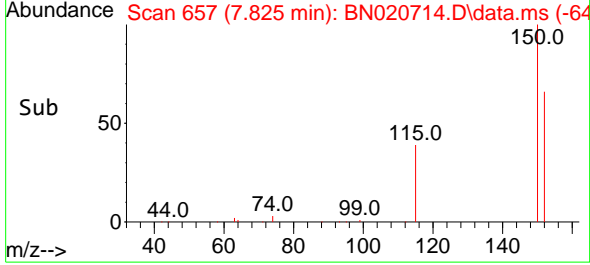
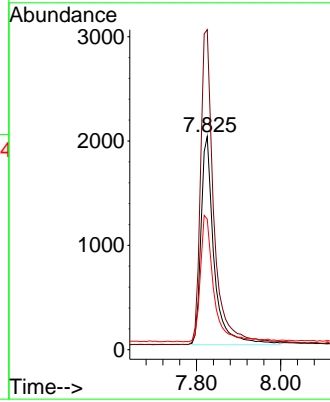


#1
 1,4-Dichlorobenzene-d4
 Concen: 0.400 ng
 RT: 7.825 min Scan# 61
 Delta R.T. 0.000 min
 Lab File: BN020714.D
 Acq: 12 Jul 2022 13:28

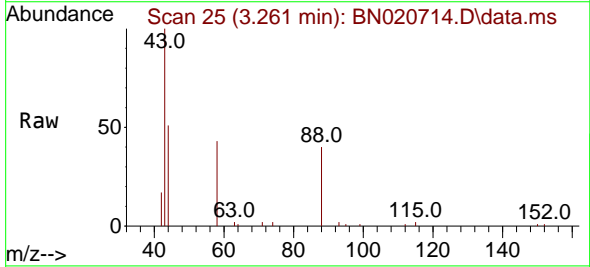
Instrument :
 BNA_N
 ClientSampleId :
 EB-01-070722



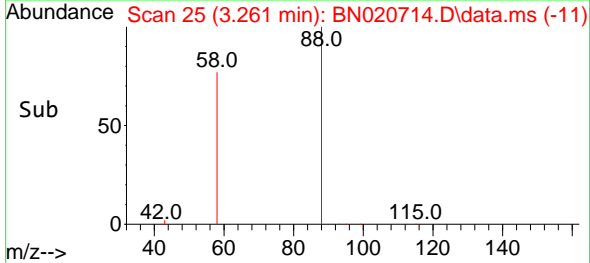
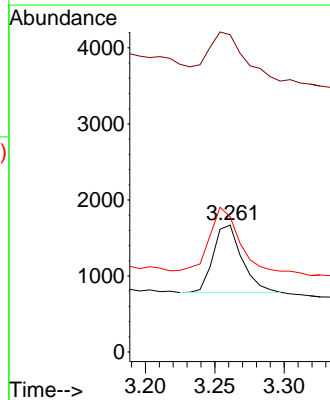
Tgt Ion:152 Resp: 4301
 Ion Ratio Lower Upper
 152 100
 150 150.2 127.9 191.9
 115 61.3 51.4 77.2

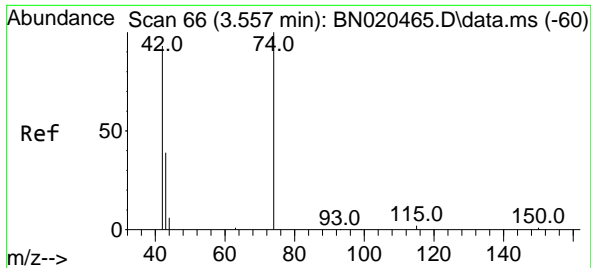


#2
 1,4-Dioxane
 Concen: 0.228 ng
 RT: 3.261 min Scan# 25
 Delta R.T. 0.000 min
 Lab File: BN020714.D
 Acq: 12 Jul 2022 13:28



Tgt Ion: 88 Resp: 1285
 Ion Ratio Lower Upper
 88 100
 43 91.2 30.2 45.2#
 58 93.2 73.0 109.6

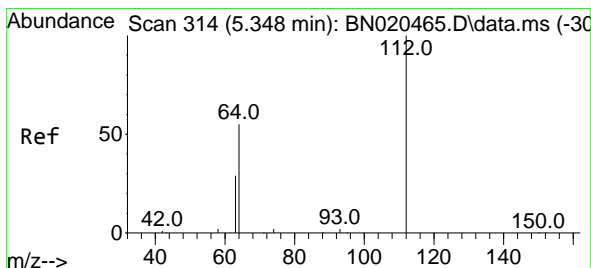
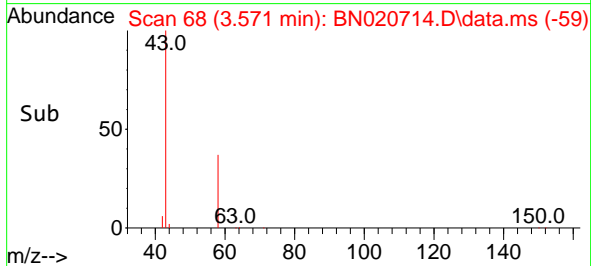
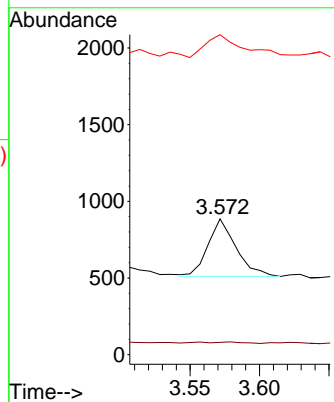
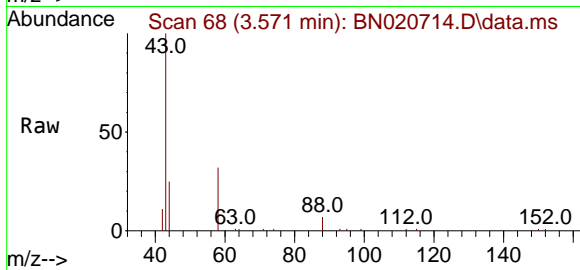




#3
 n-Nitrosodimethylamine
 Concen: 0.103 ng
 RT: 3.571 min Scan# 61
 Delta R.T. -0.036 min
 Lab File: BN020714.D
 Acq: 12 Jul 2022 13:28

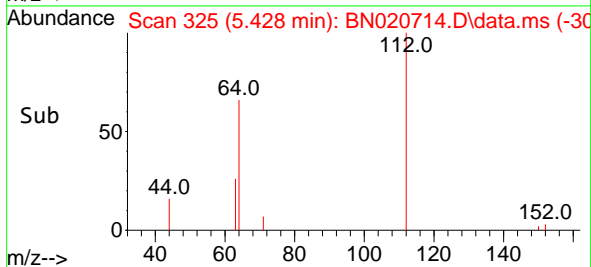
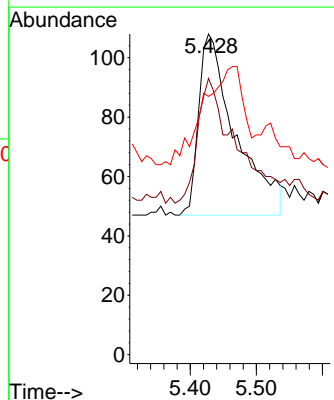
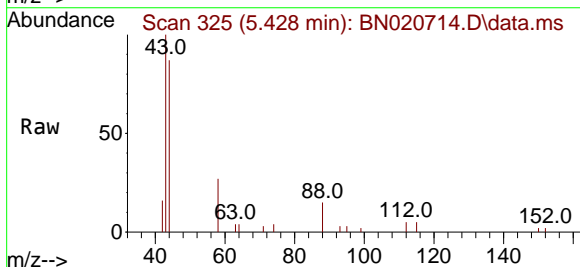
Instrument :
 BNA_N
 ClientSampleId :
 EB-01-070722

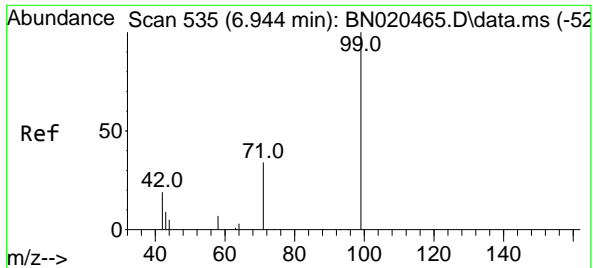
Tgt Ion: 42 Resp: 528
 Ion Ratio Lower Upper
 42 100
 74 2.1 84.0 126.0#
 44 54.5 9.8 14.8#



#4
 2-Fluorophenol
 Concen: 0.020 ng
 RT: 5.428 min Scan# 325
 Delta R.T. 0.014 min
 Lab File: BN020714.D
 Acq: 12 Jul 2022 13:28

Tgt Ion: 112 Resp: 236
 Ion Ratio Lower Upper
 112 100
 64 71.6 49.1 73.7
 63 0.0 26.3 39.5#



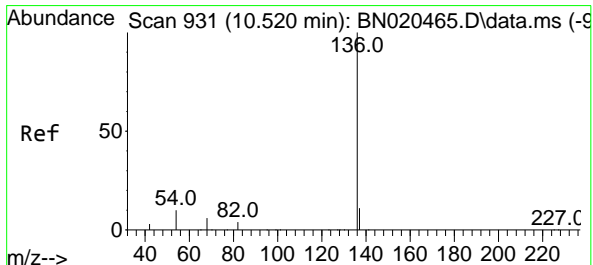
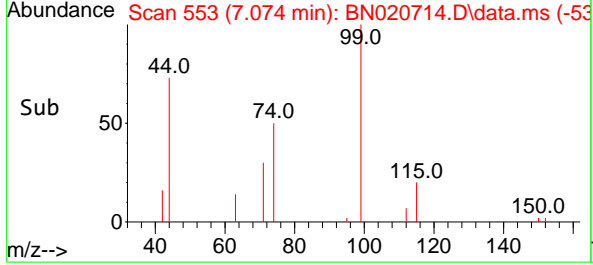
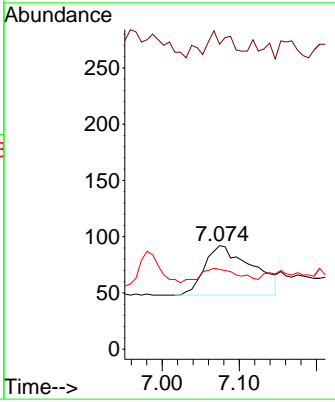
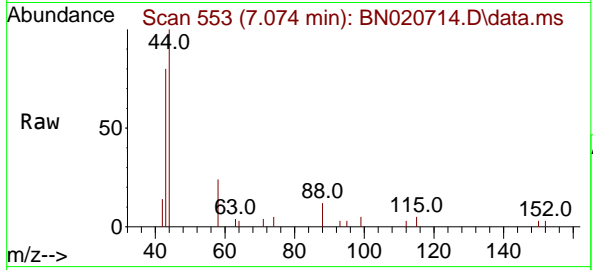


#5
 Phenol-d6
 Concen: 0.013 ng
 RT: 7.074 min Scan# 51
 Delta R.T. 0.043 min
 Lab File: BN020714.D
 Acq: 12 Jul 2022 13:28

Instrument : BNA_N
 ClientSampleId : EB-01-070722

Tgt Ion: 99 Resp: 189

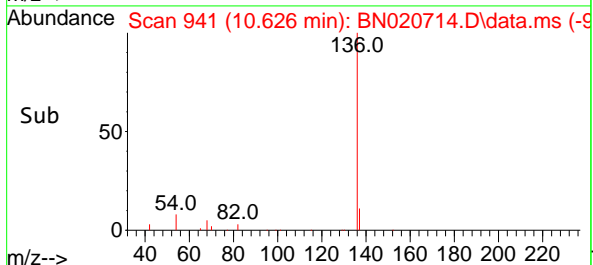
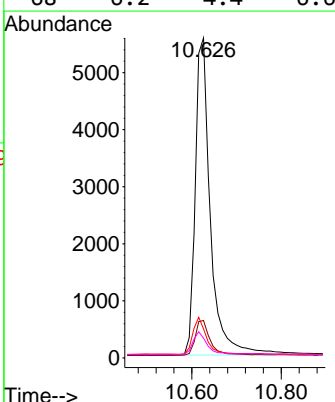
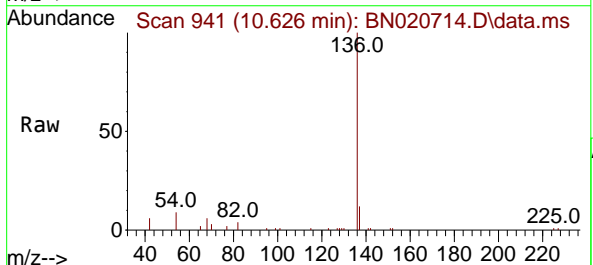
Ion	Ratio	Lower	Upper
99	100		
42	28.0	19.3	28.9
71	25.4	27.5	41.3

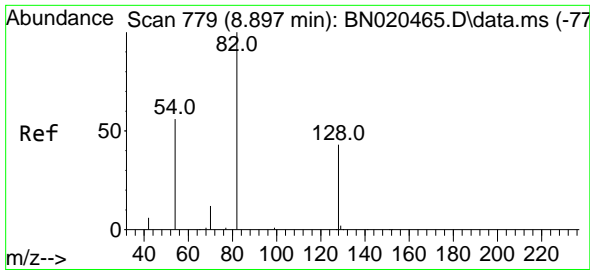


#7
 Naphthalene-d8
 Concen: 0.400 ng
 RT: 10.626 min Scan# 941
 Delta R.T. 0.000 min
 Lab File: BN020714.D
 Acq: 12 Jul 2022 13:28

Tgt Ion: 136 Resp: 13081

Ion	Ratio	Lower	Upper
136	100		
137	11.7	9.0	13.6
54	9.1	6.2	9.2
68	6.2	4.4	6.6

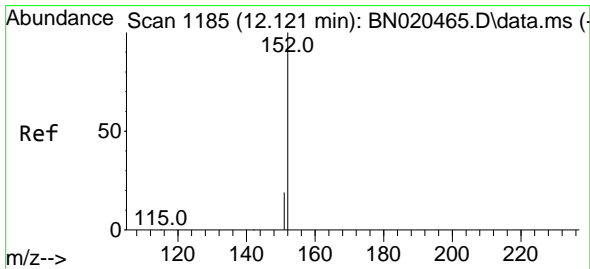
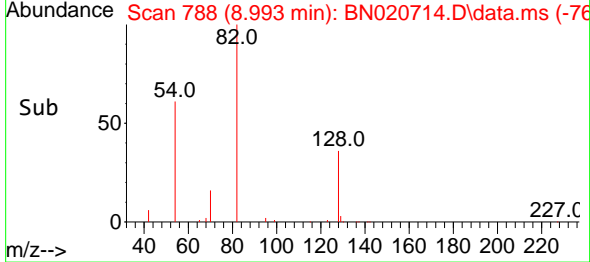
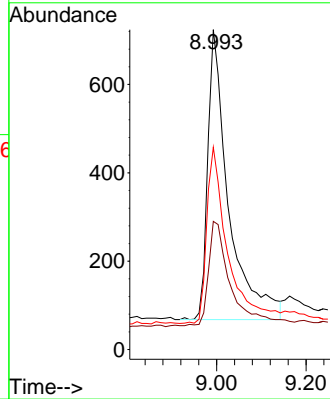
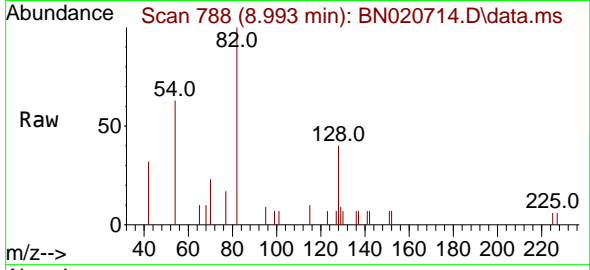




#8
 Nitrobenzene-d5
 Concen: 0.200 ng
 RT: 8.993 min Scan# 779
 Delta R.T. 0.000 min
 Lab File: BN020714.D
 Acq: 12 Jul 2022 13:28

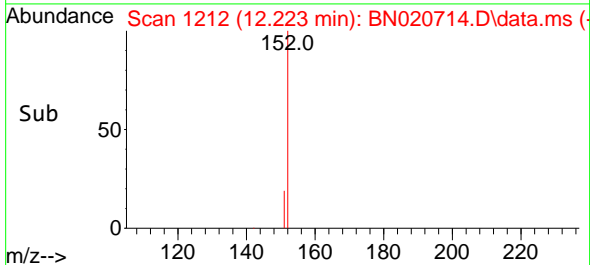
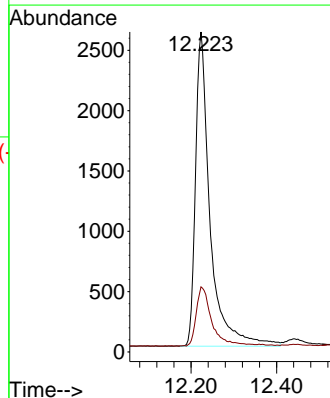
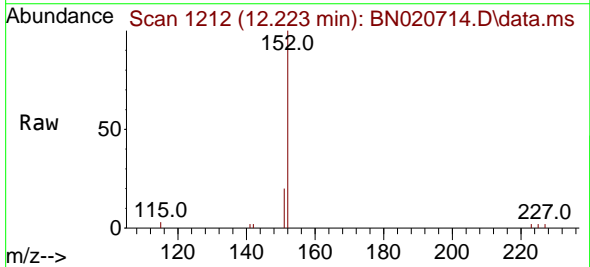
Instrument :
 BNA_N
 ClientSampleId :
 EB-01-070722

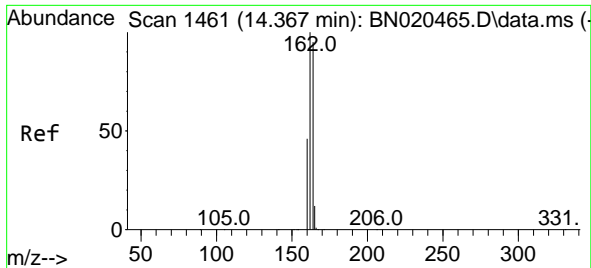
Tgt Ion: 82 Resp: 2115
 Ion Ratio Lower Upper
 82 100
 128 40.1 35.0 52.6
 54 63.3 46.2 69.4



#11
 2-Methylnaphthalene-d10
 Concen: 0.274 ng
 RT: 12.223 min Scan# 1212
 Delta R.T. -0.004 min
 Lab File: BN020714.D
 Acq: 12 Jul 2022 13:28

Tgt Ion: 152 Resp: 6150
 Ion Ratio Lower Upper
 152 100
 151 19.9 16.2 24.4

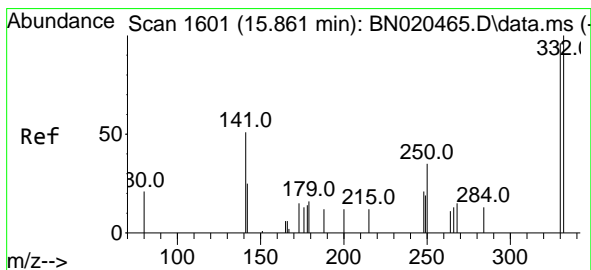
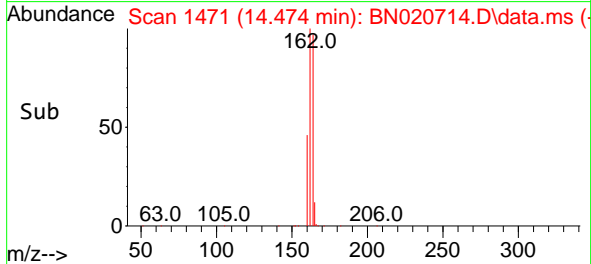
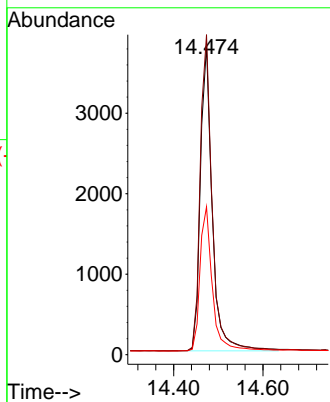
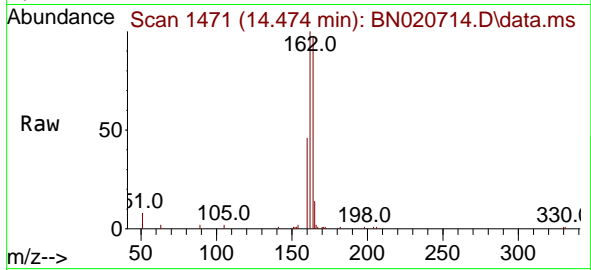




#13
 Acenaphthene-d10
 Concen: 0.400 ng
 RT: 14.474 min Scan# 14
 Delta R.T. 0.000 min
 Lab File: BN020714.D
 Acq: 12 Jul 2022 13:28

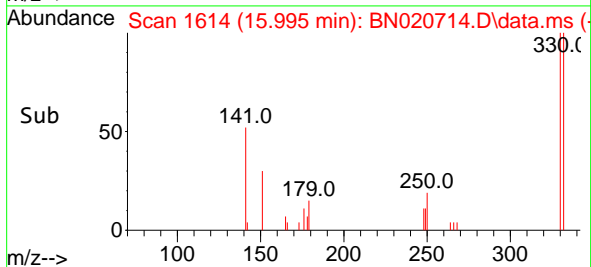
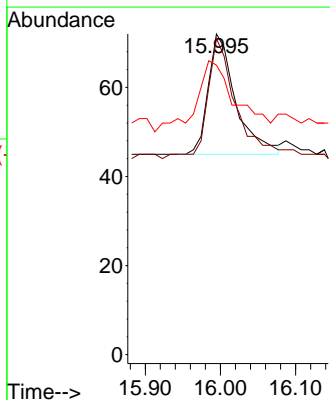
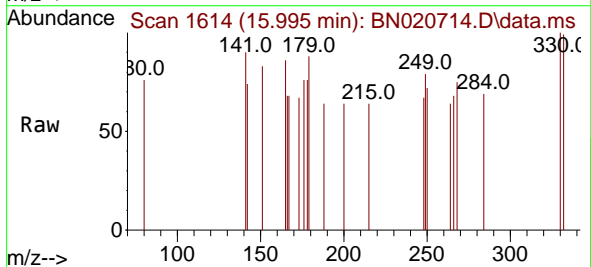
Instrument :
 BNA_N
 ClientSampleId :
 EB-01-070722

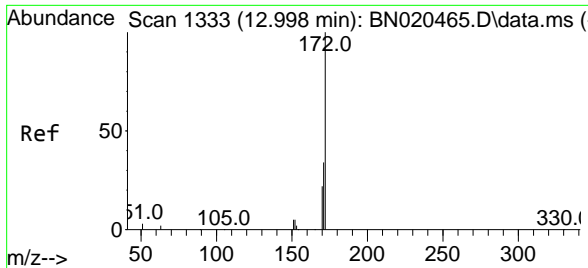
Tgt Ion:164 Resp: 6984
 Ion Ratio Lower Upper
 164 100
 162 103.6 82.1 123.1
 160 47.9 38.6 58.0



#14
 2,4,6-Tribromophenol
 Concen: 0.026 ng
 RT: 15.995 min Scan# 1614
 Delta R.T. 0.021 min
 Lab File: BN020714.D
 Acq: 12 Jul 2022 13:28

Tgt Ion:330 Resp: 69
 Ion Ratio Lower Upper
 330 100
 332 102.9 77.6 116.4
 141 84.1 41.0 61.4#



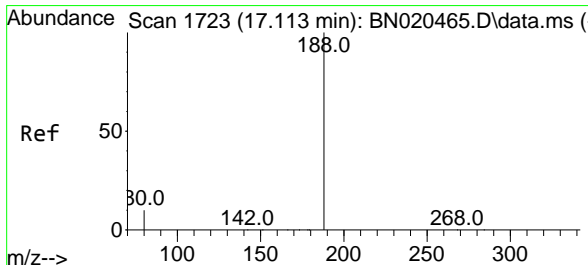
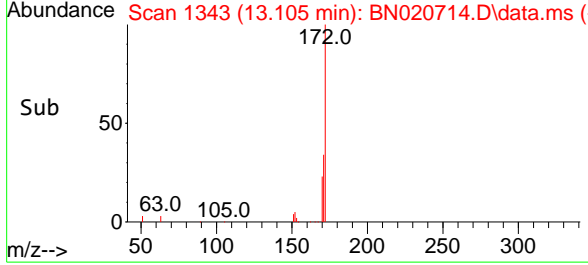
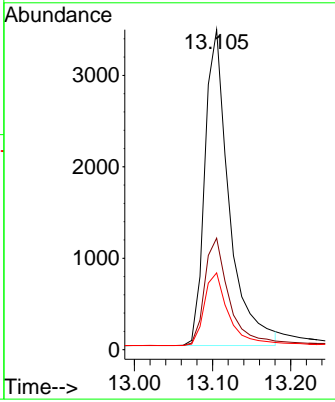
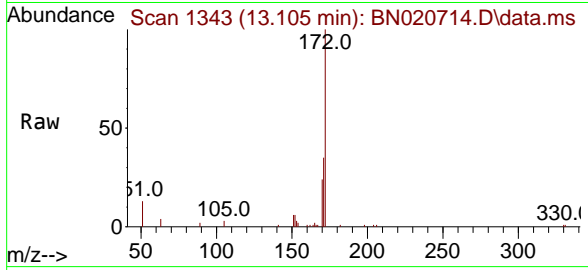


#15
 2-Fluorobiphenyl
 Concen: 0.259 ng
 RT: 13.105 min Scan# 11
 Delta R.T. 0.000 min
 Lab File: BN020714.D
 Acq: 12 Jul 2022 13:28

Instrument : BNA_N
 ClientSampleId : EB-01-070722

Tgt Ion:172 Resp: 7481

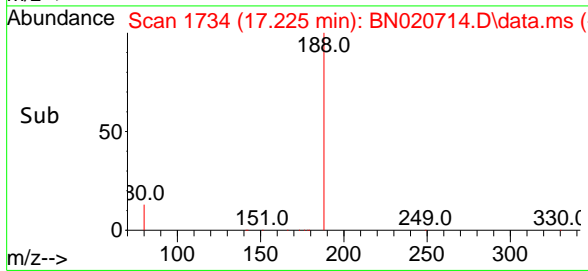
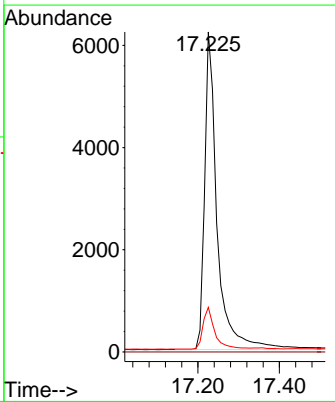
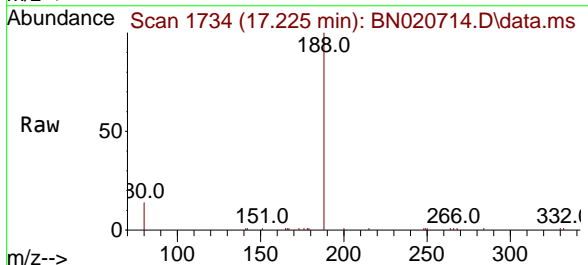
Ion	Ratio	Lower	Upper
172	100		
171	34.8	27.2	40.8
170	24.0	18.2	27.4

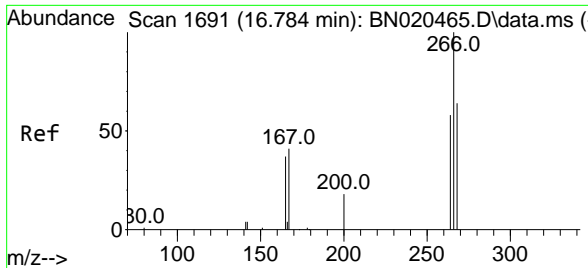


#19
 Phenanthrene-d10
 Concen: 0.400 ng
 RT: 17.225 min Scan# 1734
 Delta R.T. 0.000 min
 Lab File: BN020714.D
 Acq: 12 Jul 2022 13:28

Tgt Ion:188 Resp: 13151

Ion	Ratio	Lower	Upper
188	100		
94	0.0	0.0	0.0
80	13.9	7.4	11.2#



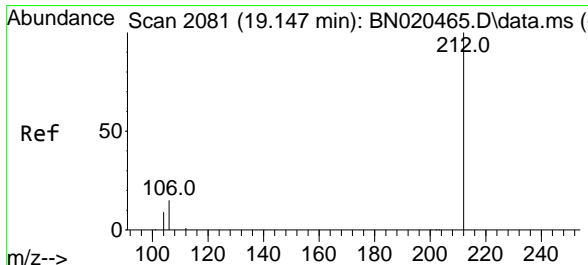
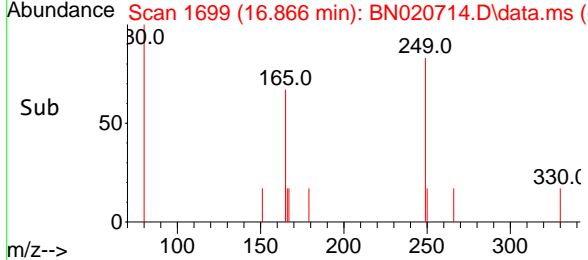
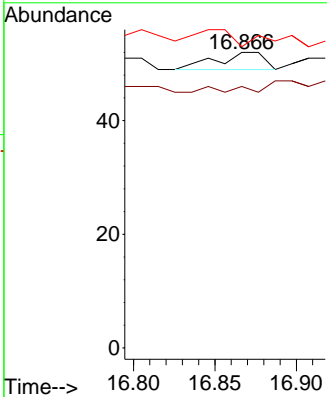
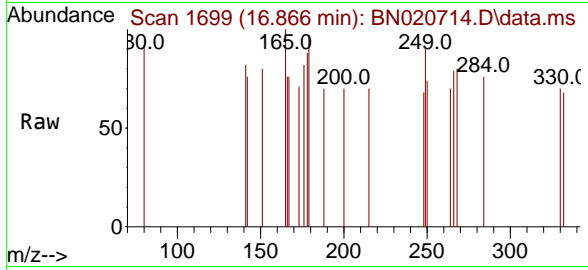


#24
 Pentachlorophenol
 Concen: 0.186 ng
 RT: 16.866 min Scan# 1100
 Delta R.T. -0.031 min
 Lab File: BN020714.D
 Acq: 12 Jul 2022 13:28

Instrument : BNA_N
 ClientSampleId : EB-01-070722

Tgt Ion:266 Resp: 6

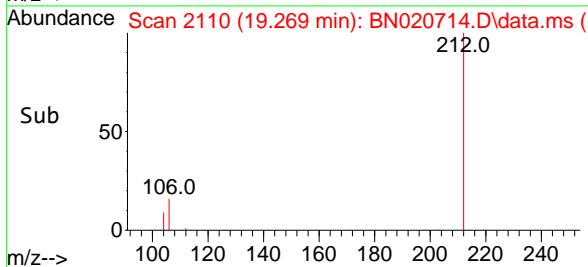
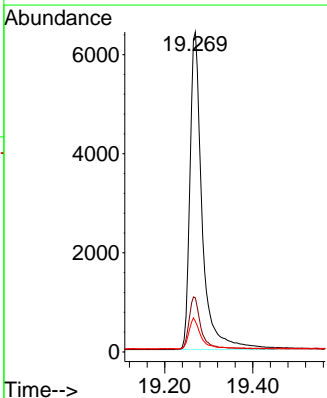
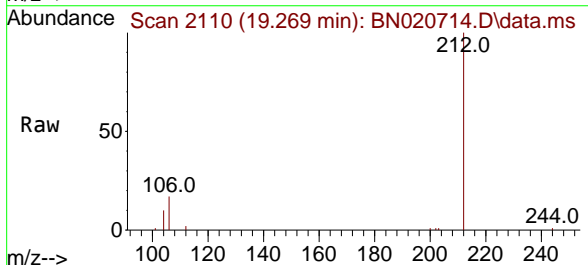
Ion	Ratio	Lower	Upper
266	100		
264	0.0	51.3	76.9#
268	0.0	52.6	79.0#

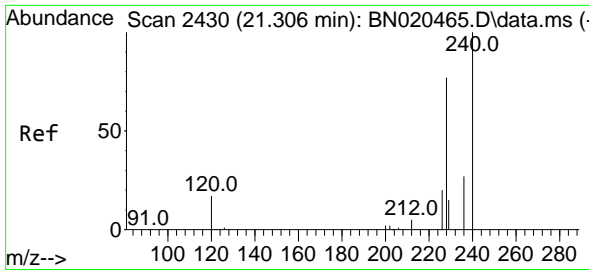


#27
 Fluoranthene-d10
 Concen: 0.316 ng
 RT: 19.269 min Scan# 2110
 Delta R.T. 0.000 min
 Lab File: BN020714.D
 Acq: 12 Jul 2022 13:28

Tgt Ion:212 Resp: 12361

Ion	Ratio	Lower	Upper
212	100		
106	16.2	12.6	19.0
104	8.9	7.2	10.8



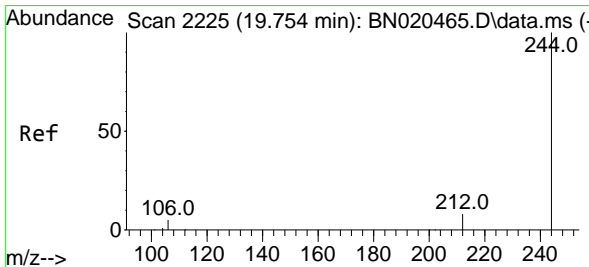
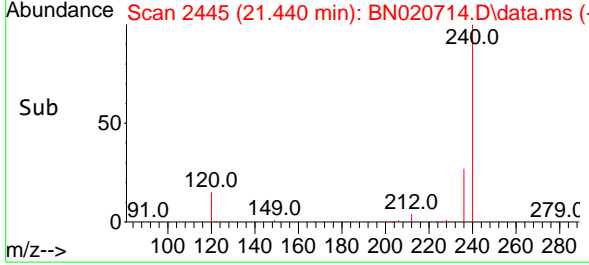
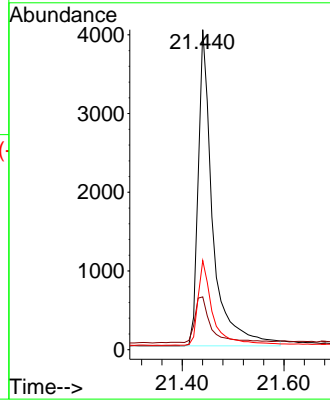
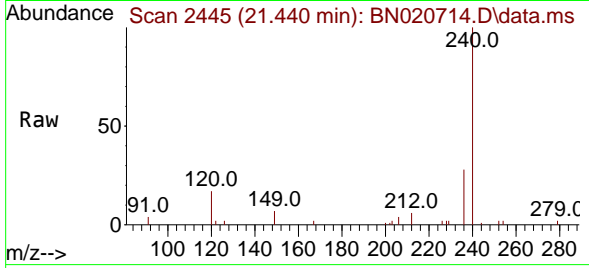


#29
 Chrysene-d12
 Concen: 0.400 ng
 RT: 21.440 min Scan# 2430
 Delta R.T. 0.009 min
 Lab File: BN020714.D
 Acq: 12 Jul 2022 13:28

Instrument : BNA_N
 ClientSampleId : EB-01-070722

Tgt Ion:240 Resp: 7968

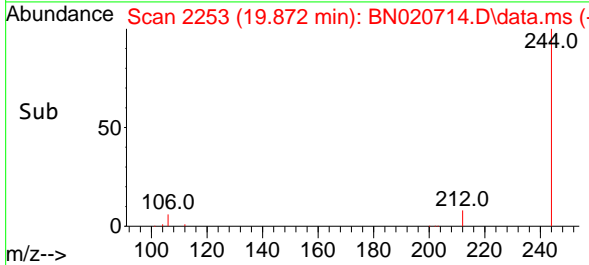
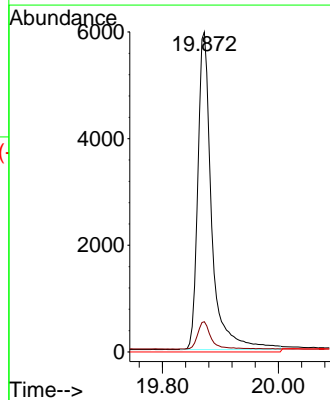
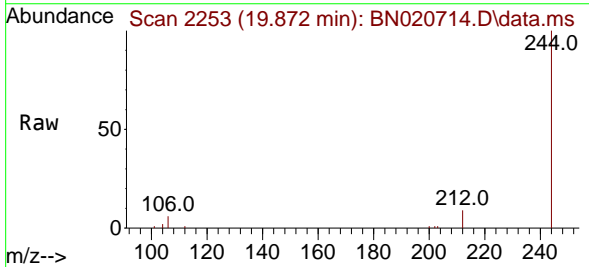
Ion	Ratio	Lower	Upper
240	100		
120	16.5	14.6	21.8
236	27.8	22.6	33.8

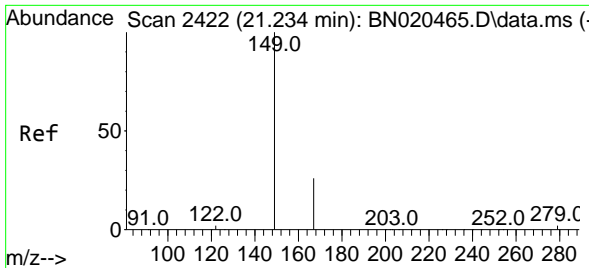


#31
 Terphenyl-d14
 Concen: 0.519 ng
 RT: 19.872 min Scan# 2253
 Delta R.T. 0.000 min
 Lab File: BN020714.D
 Acq: 12 Jul 2022 13:28

Tgt Ion:244 Resp: 9882

Ion	Ratio	Lower	Upper
244	100		
212	9.4	7.1	10.7
122	0.0	0.0	0.0

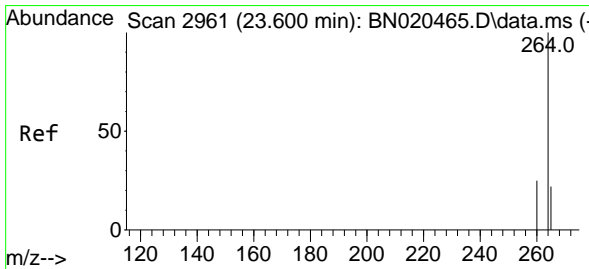
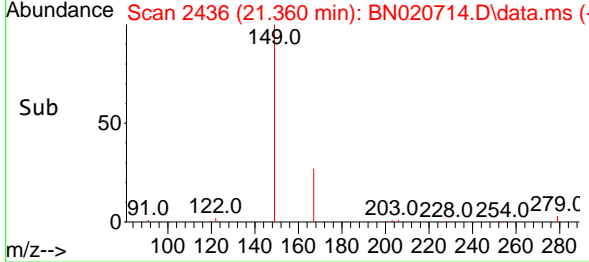
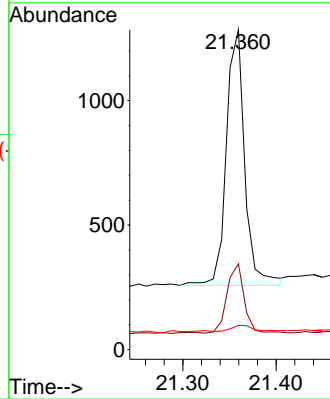
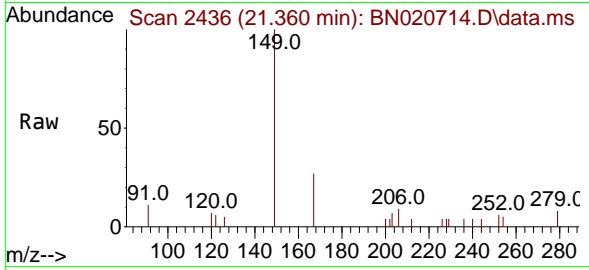




#34
 Bis(2-ethylhexyl)phthalate
 Concen: 0.088 ng
 RT: 21.360 min Scan# 24
 Delta R.T. 0.009 min
 Lab File: BN020714.D
 Acq: 12 Jul 2022 13:28

Instrument :
 BNA_N
 ClientSampleId :
 EB-01-070722

Tgt Ion	Resp	Lower	Upper
149	100		
167	25.3	21.7	32.5
279	3.8	2.2	3.2#



#35
 Perylene-d12
 Concen: 0.400 ng
 RT: 23.793 min Scan# 3027
 Delta R.T. 0.003 min
 Lab File: BN020714.D
 Acq: 12 Jul 2022 13:28

Tgt Ion	Resp	Lower	Upper
264	100		
260	26.3	20.9	31.3
265	45.7	28.0	42.0#

