

Data Path : Z:\svoasrv\HPCHEM1\BNA_N\Data\BN092221\
 Data File : BN016407.D
 Acq On : 22 Sep 2021 11:46
 Operator : CG/JU
 Sample : M3835-01DL 5X
 Misc :
 ALS Vial : 5 Sample Multiplier: 1

Instrument :
 BNA_N
 ClientSampleId :
 SW-RR-02-(1.0)DL

Quant Time: Sep 22 12:54:17 2021
 Quant Method : Z:\SVOASRV\HPCHEM1\BNA_N\METHODS\8270-SIM-BN091721.M
 Quant Title : ASP BNA STANDARDS FOR 5 POINT CALIBRATION
 QLast Update : Tue Sep 21 13:21:55 2021
 Response via : Initial Calibration

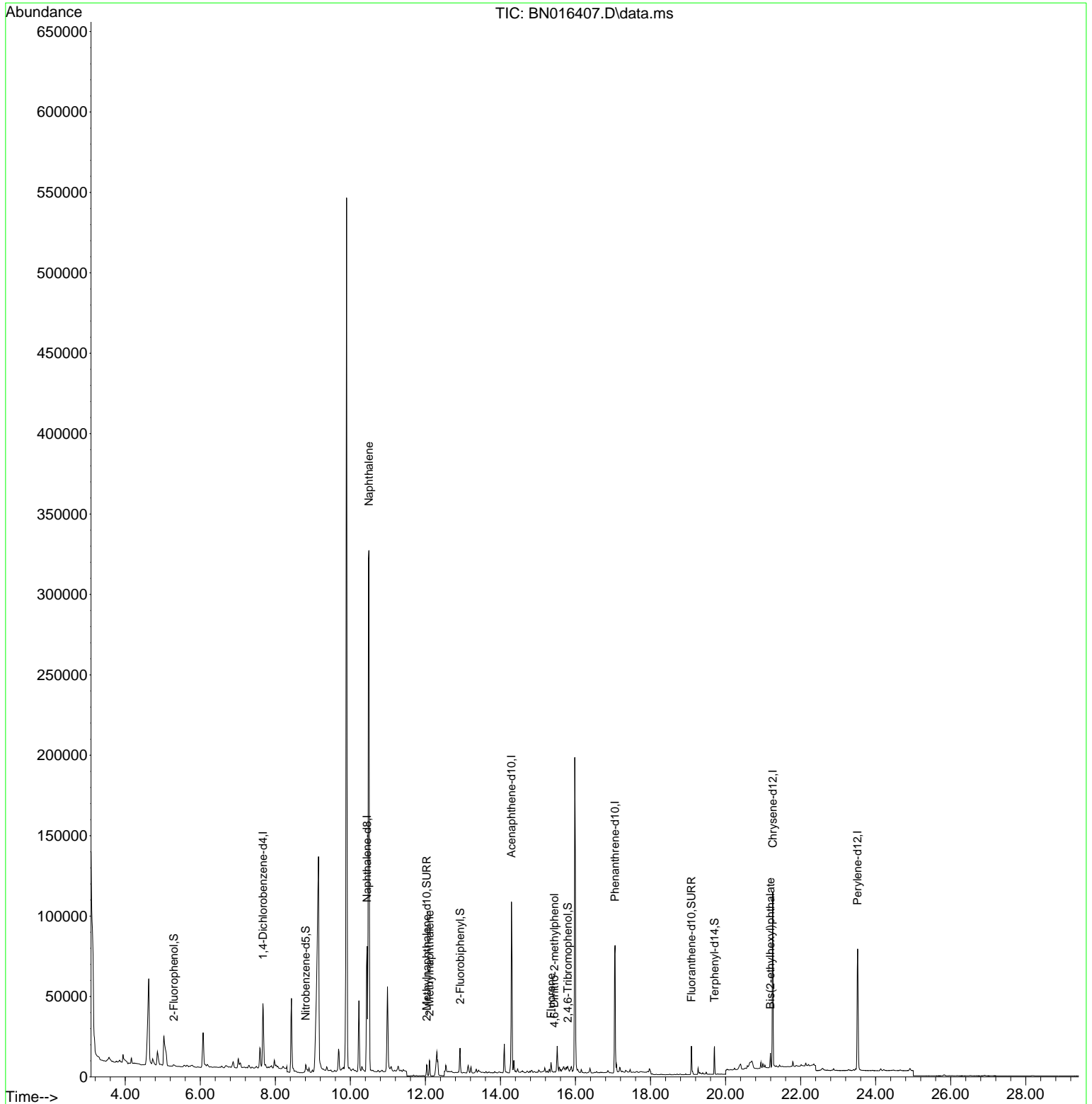
Compound	R.T.	QIon	Response	Conc	Units	Dev(Min)	
Internal Standards							
1) 1,4-Dichlorobenzene-d4	7.670	152	24826	0.400	ng	0.00	
7) Naphthalene-d8	10.445	136	108455	0.400	ng	0.00	
13) Acenaphthene-d10	14.294	164	60771	0.400	ng	-0.01	
19) Phenanthrene-d10	17.054	188	120183	0.400	ng	0.00	#
29) Chrysene-d12	21.259	240	108009	0.400	ng	0.00	
35) Perylene-d12	23.519	264	100211	0.400	ng	0.00	
System Monitoring Compounds							
4) 2-Fluorophenol	5.291	112	1511	0.024	ng	0.00	
5) Phenol-d6	6.849	99	1101	0.015	ng	0.00	
8) Nitrobenzene-d5	8.810	82	3833	0.059	ng	0.00	
11) 2-Methylnaphthalene-d10	12.034	152	9229	0.054	ng	0.00	
14) 2,4,6-Tribromophenol	15.791	330	1236	0.069	ng	0.00	
15) 2-Fluorobiphenyl	12.924	172	12785	0.054	ng	0.00	
27) Fluoranthene-d10	19.088	212	20267	0.058	ng	0.00	
31) Terphenyl-d14	19.703	244	17129	0.068	ng	0.00	
Target Compounds							
9) Naphthalene	10.495	128	477408	1.634	ng	100	Qvalue
12) 2-Methylnaphthalene	12.109	142	6961	0.036	ng	98	
18) Fluorene	15.347	166	4714	0.022	ng	99	
20) 4,6-Dinitro-2-methylph...	15.436	198	38	0.152	ng	1	#
34) Bis(2-ethylhexyl)phtha...	21.196	149	8184	0.044	ng	95	

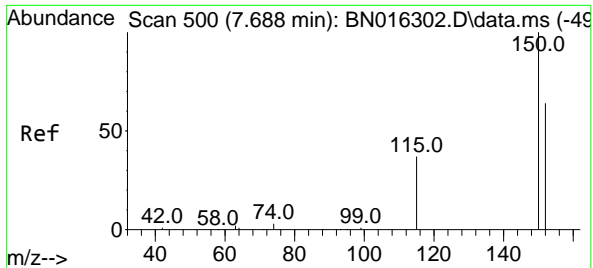
(#) = qualifier out of range (m) = manual integration (+) = signals summed

Data Path : Z:\svoasrv\HPCHEM1\BNA_N\Data\BN092221\
 Data File : BN016407.D
 Acq On : 22 Sep 2021 11:46
 Operator : CG/JU
 Sample : M3835-01DL 5X
 Misc :
 ALS Vial : 5 Sample Multiplier: 1

Instrument :
 BNA_N
 ClientSampleId :
 SW-RR-02-(1.0)DL

Quant Time: Sep 22 12:54:17 2021
 Quant Method : Z:\SVOASRV\HPCHEM1\BNA_N\METHODS\8270-SIM-BN091721.M
 Quant Title : ASP BNA STANDARDS FOR 5 POINT CALIBRATION
 QLast Update : Tue Sep 21 13:21:55 2021
 Response via : Initial Calibration



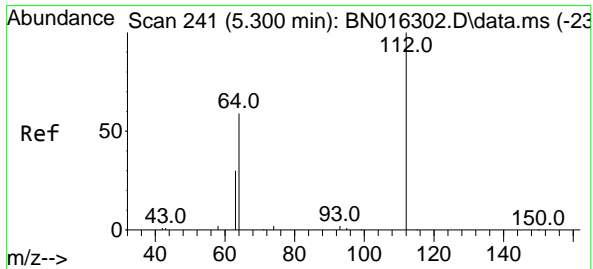
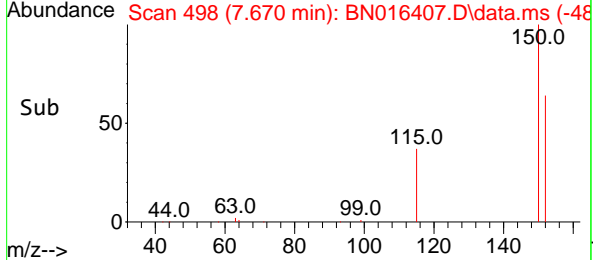
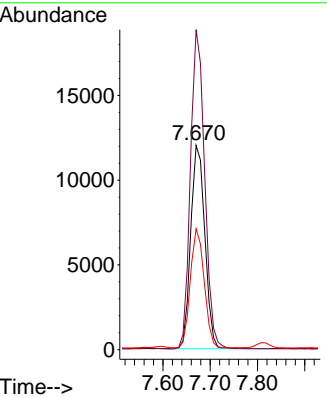
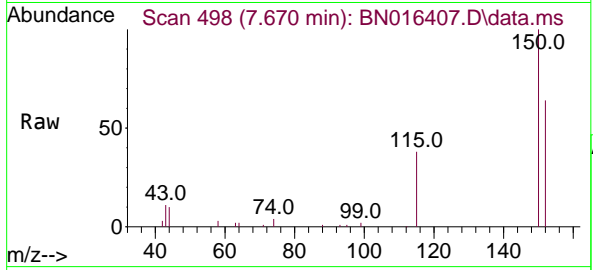


#1
 1,4-Dichlorobenzene-d4
 Concen: 0.400 ng
 RT: 7.670 min Scan# 498
 Delta R.T. 0.000 min
 Lab File: BN016407.D
 Acq: 22 Sep 2021 11:46

Instrument :
 BNA_N
 ClientSampleId :
 SW-RR-02-(1.0)DL

Tgt Ion:152 Resp: 24826

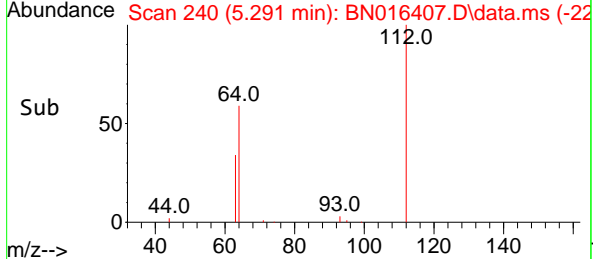
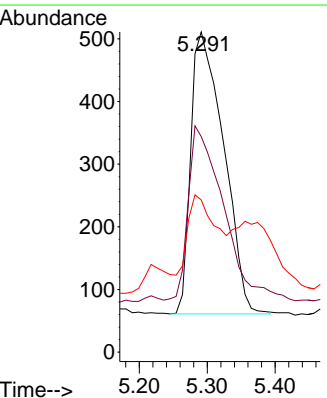
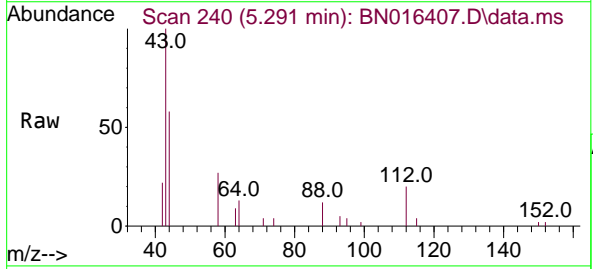
Ion	Ratio	Lower	Upper
152	100		
150	156.6	125.6	188.4
115	59.2	50.2	75.2

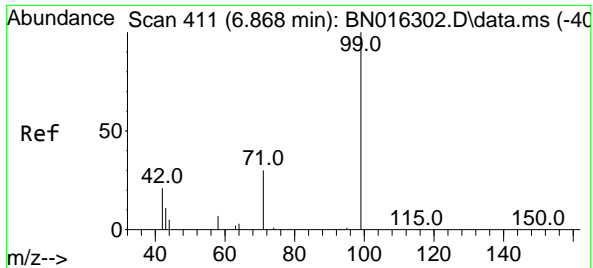


#4
 2-Fluorophenol
 Concen: 0.024 ng
 RT: 5.291 min Scan# 240
 Delta R.T. 0.010 min
 Lab File: BN016407.D
 Acq: 22 Sep 2021 11:46

Tgt Ion:112 Resp: 1511

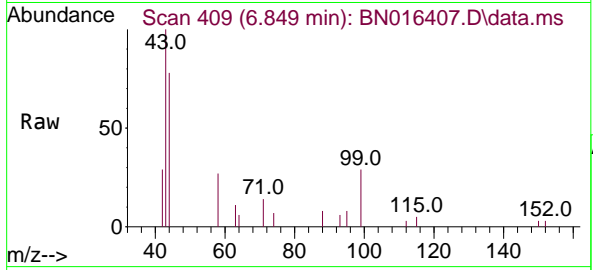
Ion	Ratio	Lower	Upper
112	100		
64	64.9	47.3	70.9
63	24.3	23.4	35.0





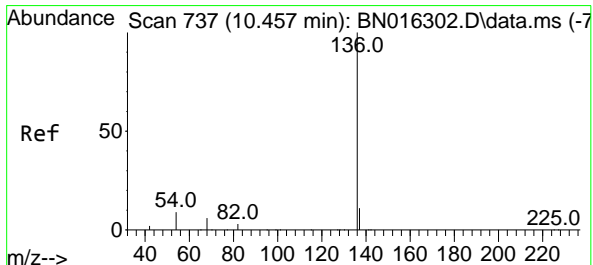
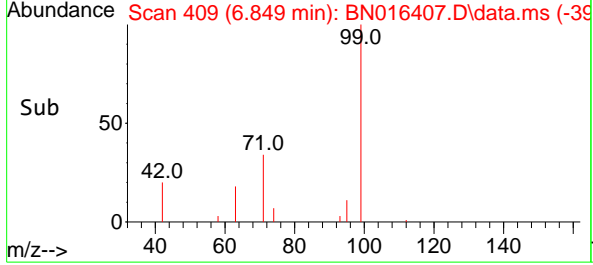
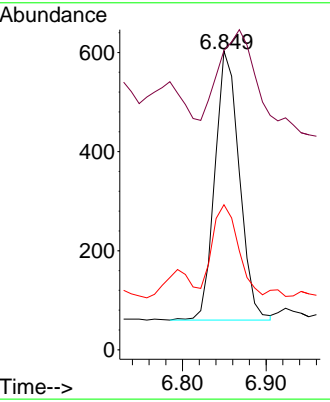
#5
 Phenol-d6
 Concen: 0.015 ng
 RT: 6.849 min Scan# 409
 Delta R.T. 0.000 min
 Lab File: BN016407.D
 Acq: 22 Sep 2021 11:46

Instrument :
 BNA_N
ClientSampled :
 SW-RR-02-(1.0)DL



Tgt Ion: 99 Resp: 1101

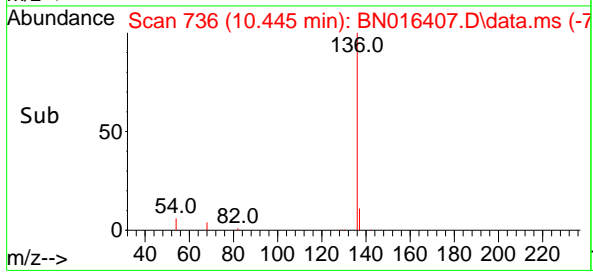
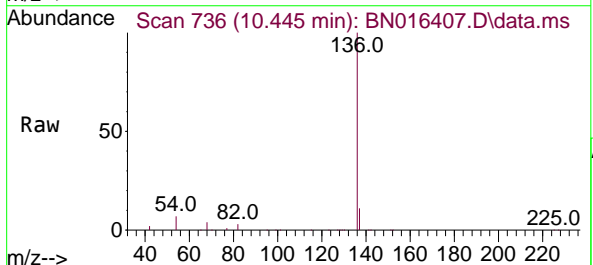
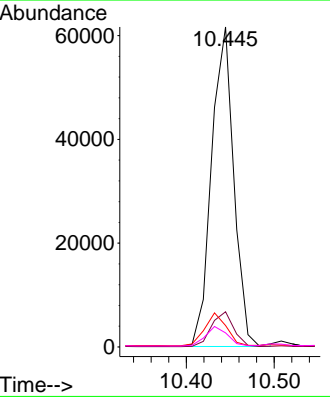
Ion	Ratio	Lower	Upper
99	100		
42	46.0	14.0	21.0#
71	34.7	23.8	35.6

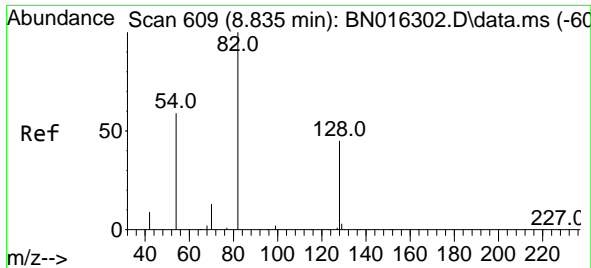


#7
 Naphthalene-d8
 Concen: 0.400 ng
 RT: 10.445 min Scan# 736
 Delta R.T. 0.000 min
 Lab File: BN016407.D
 Acq: 22 Sep 2021 11:46

Tgt Ion: 136 Resp: 108455

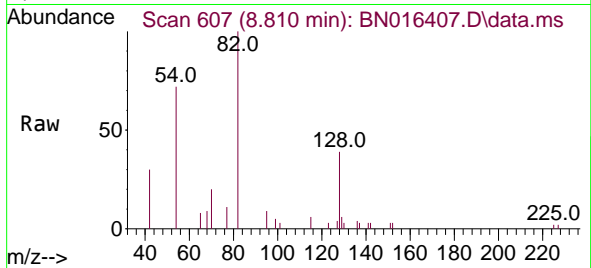
Ion	Ratio	Lower	Upper
136	100		
137	11.0	8.8	13.2
54	6.7	5.3	7.9
68	4.4	3.9	5.9





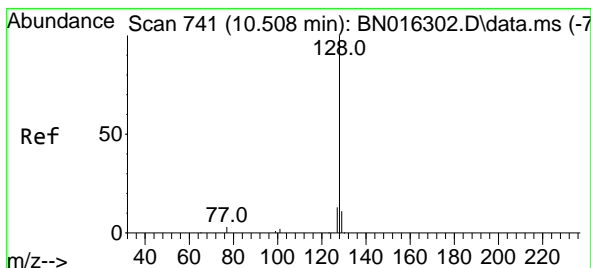
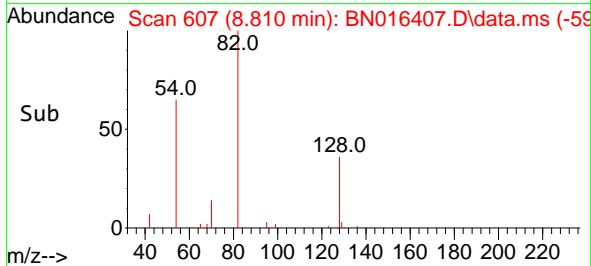
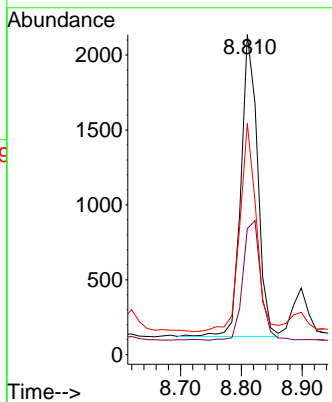
#8
 Nitrobenzene-d5
 Concen: 0.059 ng
 RT: 8.810 min Scan# 607
 Delta R.T. 0.000 min
 Lab File: BN016407.D
 Acq: 22 Sep 2021 11:46

Instrument :
 BNA_N
 ClientSampled :
 SW-RR-02-(1.0)DL



Tgt Ion: 82 Resp: 3833

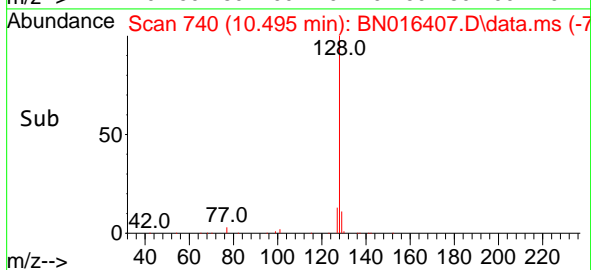
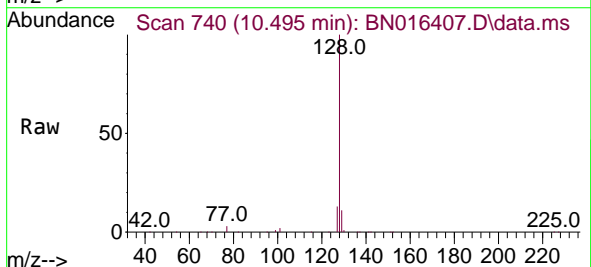
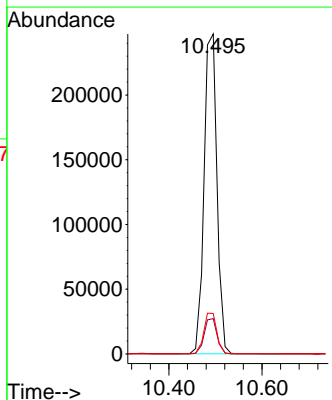
Ion	Ratio	Lower	Upper
82	100		
128	39.4	31.7	47.5
54	72.3	46.4	69.6

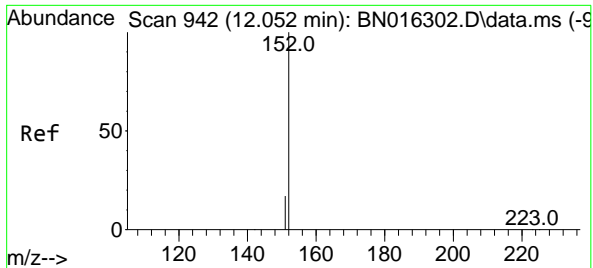


#9
 Naphthalene
 Concen: 1.634 ng
 RT: 10.495 min Scan# 740
 Delta R.T. 0.000 min
 Lab File: BN016407.D
 Acq: 22 Sep 2021 11:46

Tgt Ion: 128 Resp: 477408

Ion	Ratio	Lower	Upper
128	100		
129	11.1	8.9	13.3
127	12.6	10.1	15.1

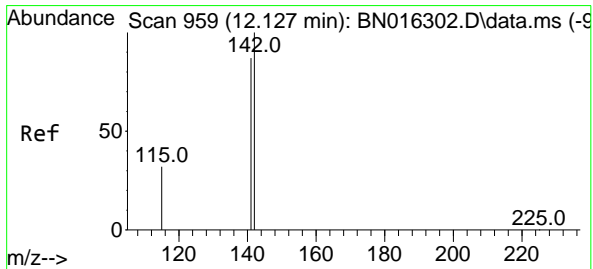
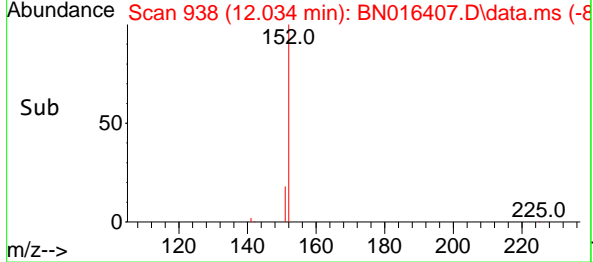
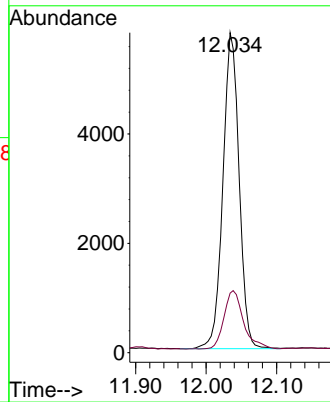
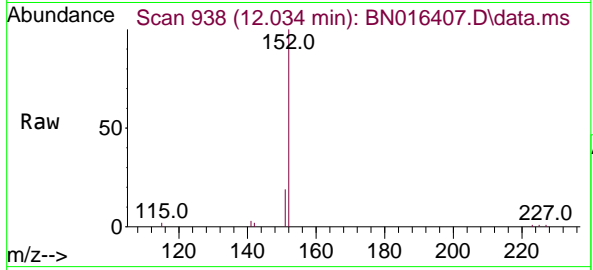




#11
 2-Methylnaphthalene-d10
 Concen: 0.054 ng
 RT: 12.034 min Scan# 938
 Delta R.T. -0.004 min
 Lab File: BN016407.D
 Acq: 22 Sep 2021 11:46

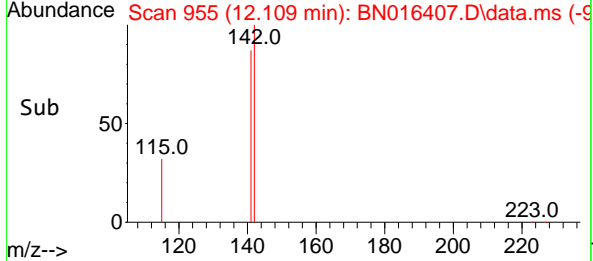
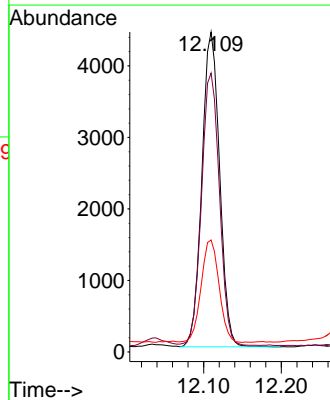
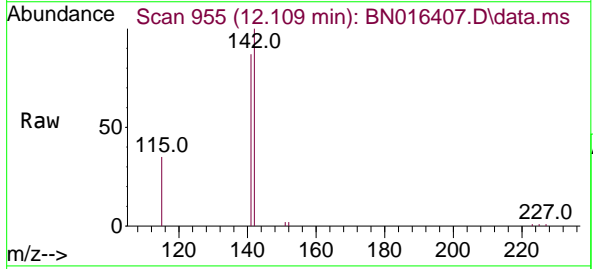
Instrument :
 BNA_N
 ClientSampleId :
 SW-RR-02-(1.0)DL

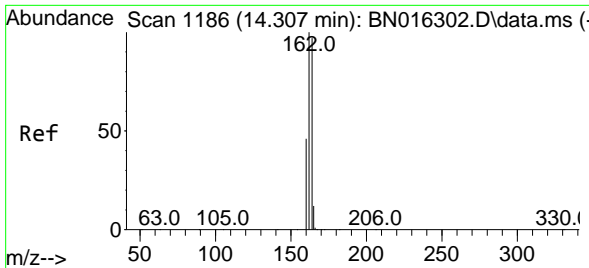
Tgt Ion:152 Resp: 9229
 Ion Ratio Lower Upper
 152 100
 151 22.5 16.1 24.1



#12
 2-Methylnaphthalene
 Concen: 0.036 ng
 RT: 12.109 min Scan# 955
 Delta R.T. -0.004 min
 Lab File: BN016407.D
 Acq: 22 Sep 2021 11:46

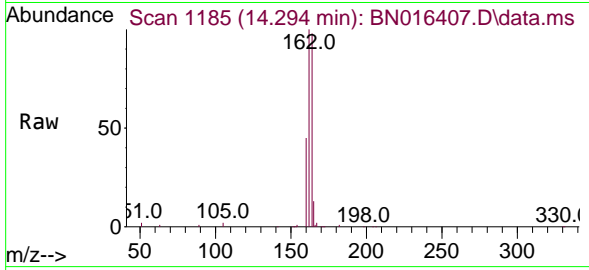
Tgt Ion:142 Resp: 6961
 Ion Ratio Lower Upper
 142 100
 141 87.2 69.8 104.8
 115 35.0 24.4 36.6





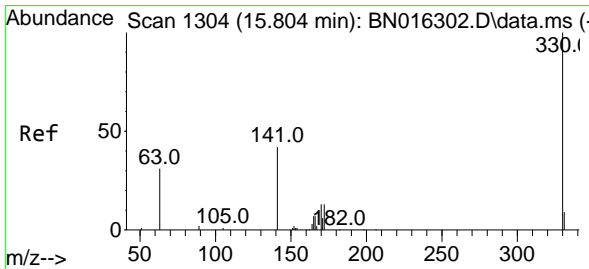
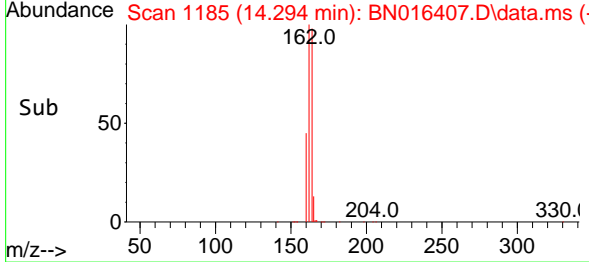
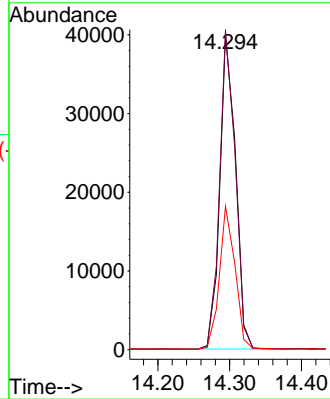
#13
 Acenaphthene-d10
 Concen: 0.400 ng
 RT: 14.294 min Scan# 1185
 Delta R.T. -0.012 min
 Lab File: BN016407.D
 Acq: 22 Sep 2021 11:46

Instrument :
 BNA_N
ClientSampleId :
 SW-RR-02-(1.0)DL

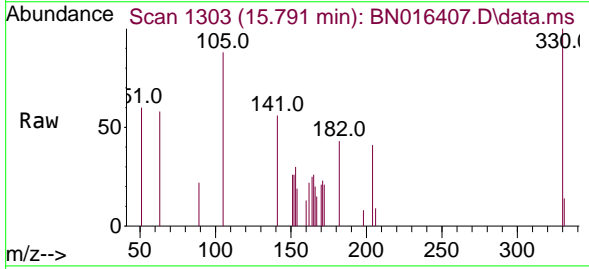


Tgt Ion:164 Resp: 60771

Ion	Ratio	Lower	Upper
164	100		
162	101.9	79.0	118.4
160	45.7	34.1	51.1

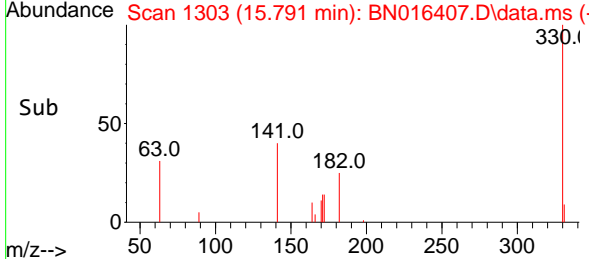
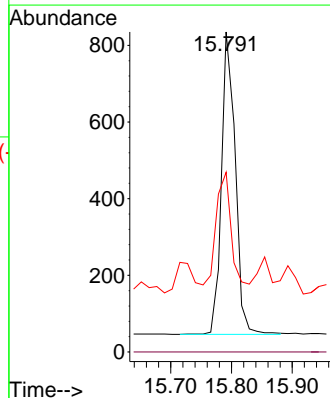


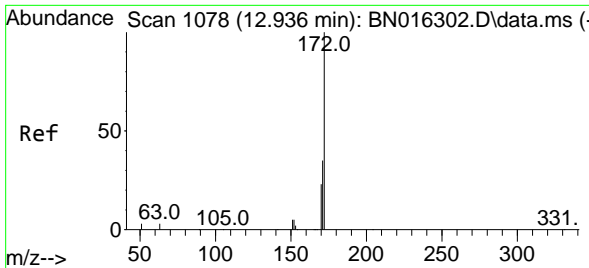
#14
 2,4,6-Tribromophenol
 Concen: 0.069 ng
 RT: 15.791 min Scan# 1303
 Delta R.T. 0.000 min
 Lab File: BN016407.D
 Acq: 22 Sep 2021 11:46



Tgt Ion:330 Resp: 1236

Ion	Ratio	Lower	Upper
330	100		
332	0.0	0.0	0.0
141	39.6	25.0	37.4#



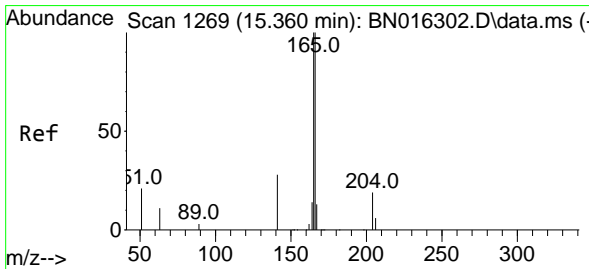
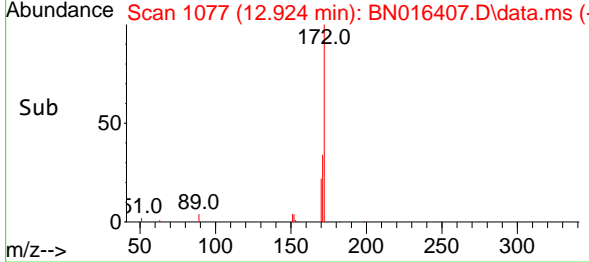
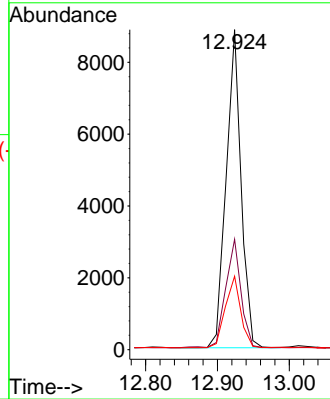
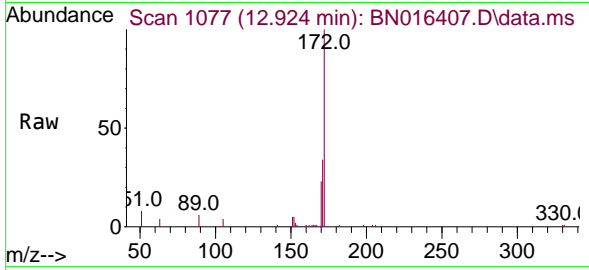


#15
 2-Fluorobiphenyl
 Concen: 0.054 ng
 RT: 12.924 min Scan# 1077
 Delta R.T. 0.000 min
 Lab File: BN016407.D
 Acq: 22 Sep 2021 11:46

Instrument :
 BNA_N
 ClientSampleId :
 SW-RR-02-(1.0)DL

Tgt Ion:172 Resp: 12785

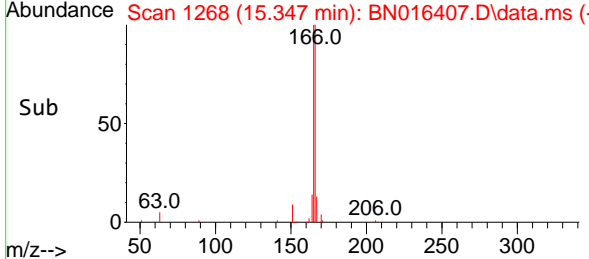
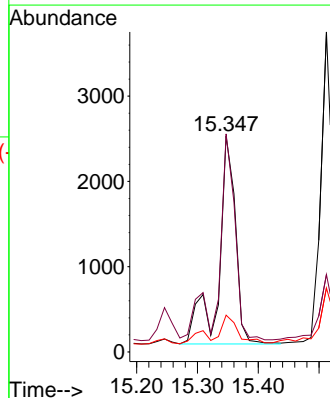
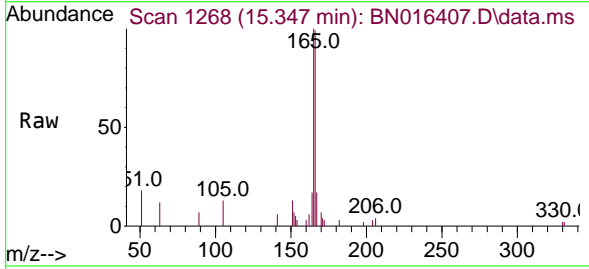
Ion	Ratio	Lower	Upper
172	100		
171	34.5	27.8	41.6
170	22.9	18.2	27.2

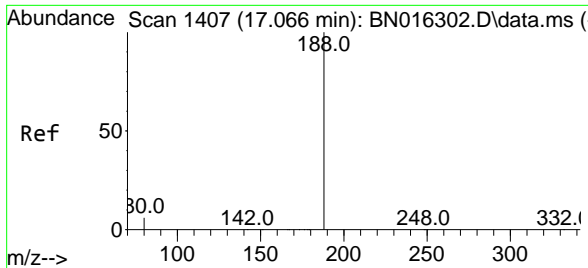


#18
 Fluorene
 Concen: 0.022 ng
 RT: 15.347 min Scan# 1268
 Delta R.T. -0.012 min
 Lab File: BN016407.D
 Acq: 22 Sep 2021 11:46

Tgt Ion:166 Resp: 4714

Ion	Ratio	Lower	Upper
166	100		
165	96.3	76.7	115.1
167	12.6	10.9	16.3

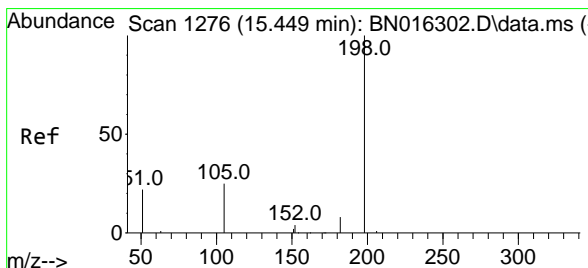
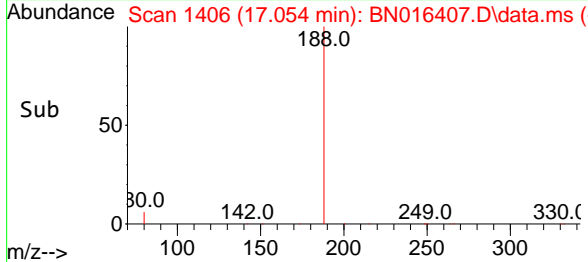
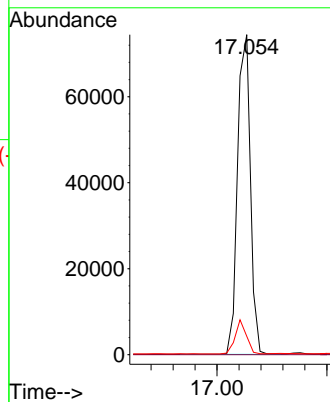
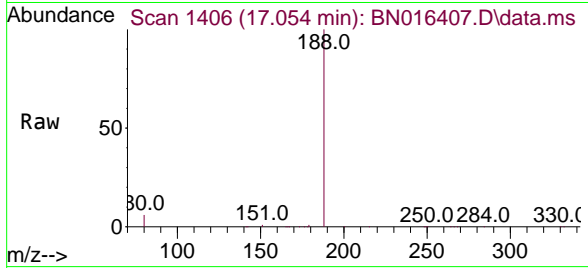




#19
 Phenanthrene-d10
 Concen: 0.400 ng
 RT: 17.054 min Scan# 1406
 Delta R.T. 0.000 min
 Lab File: BN016407.D
 Acq: 22 Sep 2021 11:46

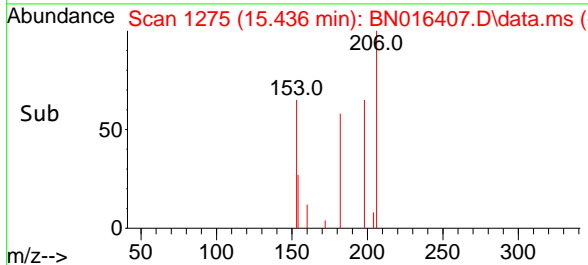
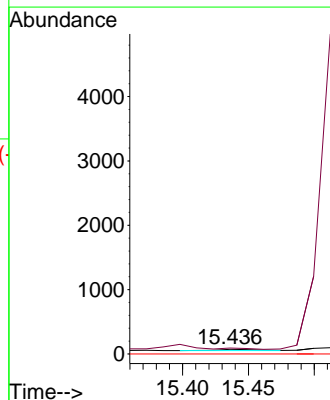
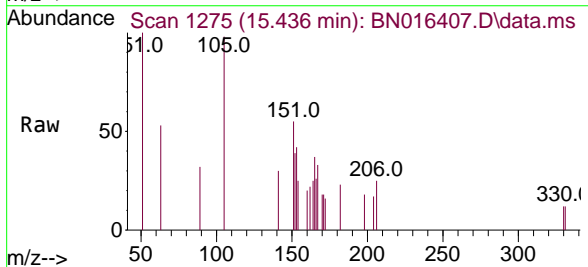
Instrument :
 BNA_N
 ClientSampleId :
 SW-RR-02-(1.0)DL

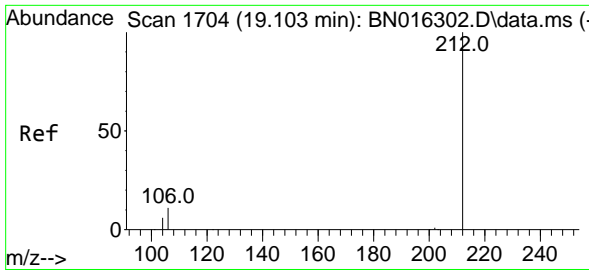
Tgt Ion:188 Resp: 120183
 Ion Ratio Lower Upper
 188 100
 94 0.0 0.0 0.0
 80 5.8 7.0 10.6#



#20
 4,6-Dinitro-2-methylphenol
 Concen: 0.152 ng
 RT: 15.436 min Scan# 1275
 Delta R.T. 0.000 min
 Lab File: BN016407.D
 Acq: 22 Sep 2021 11:46

Tgt Ion:198 Resp: 38
 Ion Ratio Lower Upper
 198 100
 182 127.4 26.6 39.8#
 77 0.0 0.0 0.0



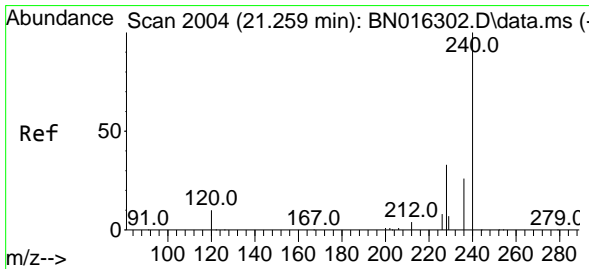
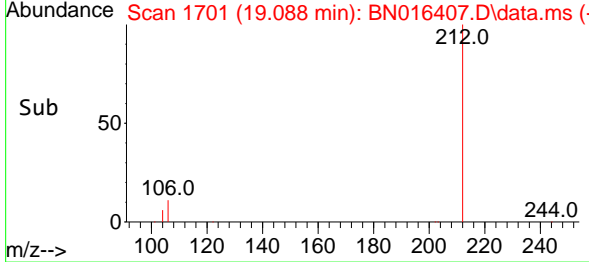
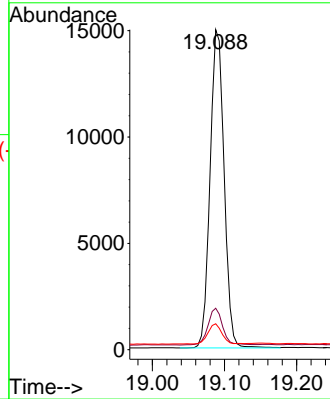
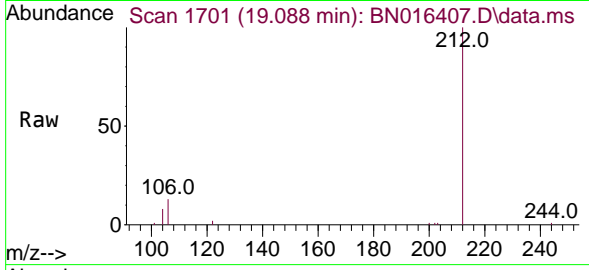


#27
 Fluoranthene-d10
 Concen: 0.058 ng
 RT: 19.088 min Scan# 1701
 Delta R.T. -0.005 min
 Lab File: BN016407.D
 Acq: 22 Sep 2021 11:46

Instrument :
 BNA_N
 ClientSampleId :
 SW-RR-02-(1.0)DL

Tgt Ion:212 Resp: 20267

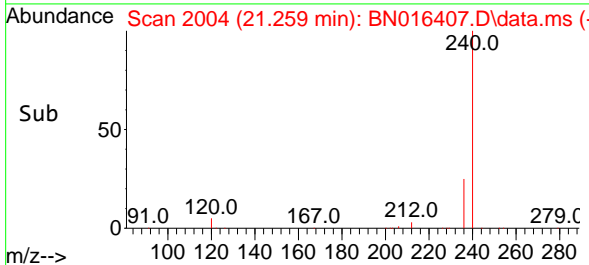
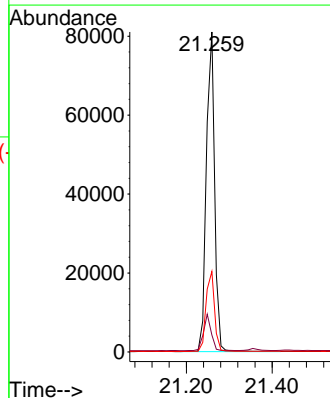
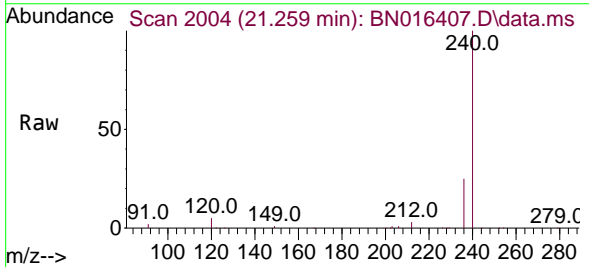
Ion	Ratio	Lower	Upper
212	100		
106	12.0	9.8	14.6
104	6.2	5.4	8.2

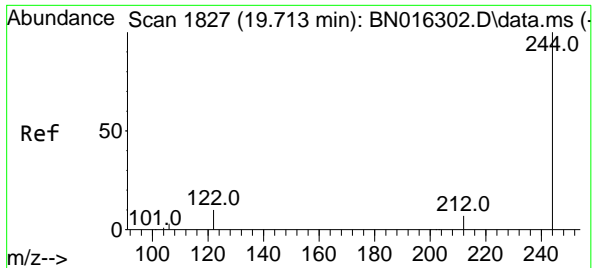


#29
 Chrysene-d12
 Concen: 0.400 ng
 RT: 21.259 min Scan# 2004
 Delta R.T. 0.000 min
 Lab File: BN016407.D
 Acq: 22 Sep 2021 11:46

Tgt Ion:240 Resp: 108009

Ion	Ratio	Lower	Upper
240	100		
120	5.3	5.3	7.9
236	25.2	19.8	29.8



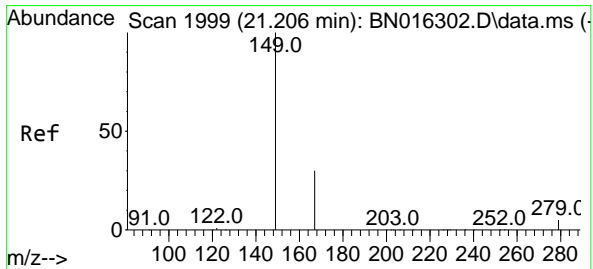
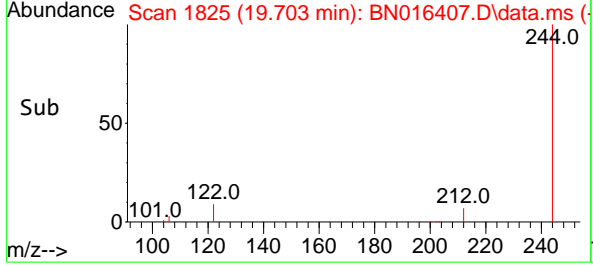
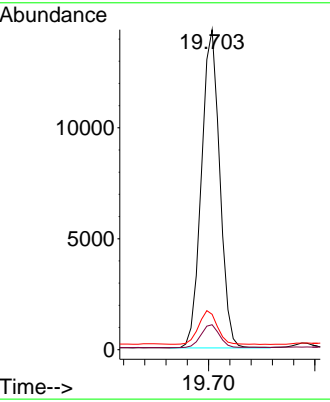
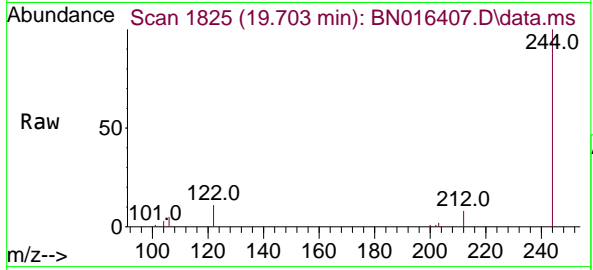


#31
 Terphenyl-d14
 Concen: 0.068 ng
 RT: 19.703 min Scan# 1825
 Delta R.T. 0.000 min
 Lab File: BN016407.D
 Acq: 22 Sep 2021 11:46

Instrument :
 BNA_N
ClientSampled :
 SW-RR-02-(1.0)DL

Tgt Ion:244 Resp: 17129

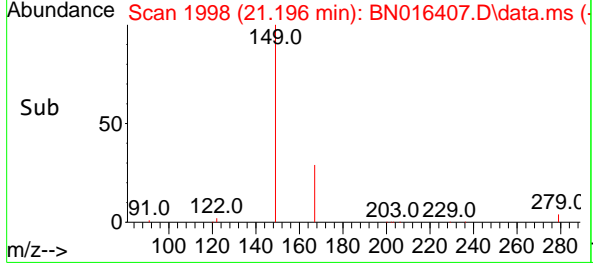
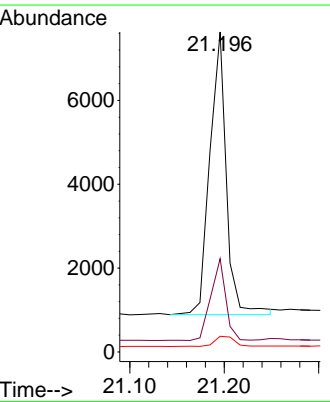
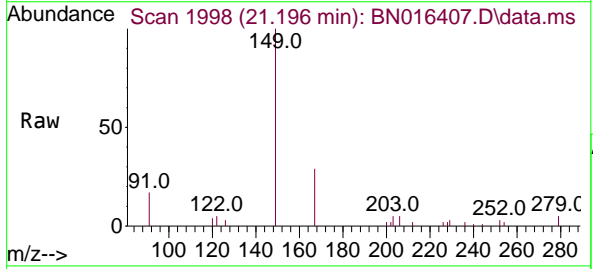
Ion	Ratio	Lower	Upper
244	100		
212	7.8	5.5	8.3
122	11.0	9.0	13.4

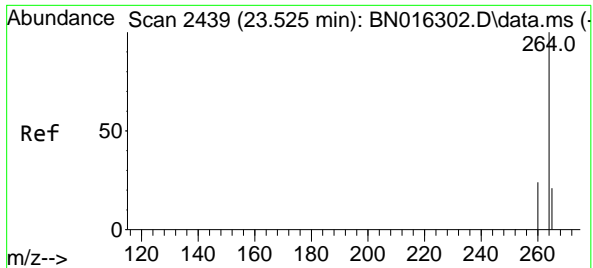


#34
 Bis(2-ethylhexyl)phthalate
 Concen: 0.044 ng
 RT: 21.196 min Scan# 1998
 Delta R.T. 0.000 min
 Lab File: BN016407.D
 Acq: 22 Sep 2021 11:46

Tgt Ion:149 Resp: 8184

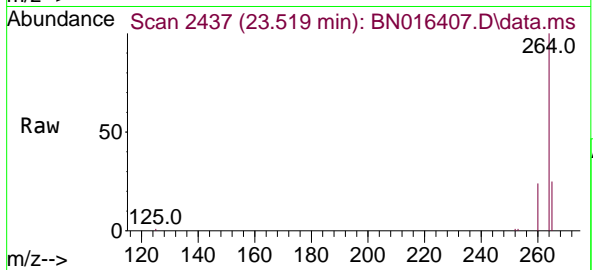
Ion	Ratio	Lower	Upper
149	100		
167	26.2	23.4	35.0
279	4.5	3.9	5.9





#35
 Perylene-d12
 Concen: 0.400 ng
 RT: 23.519 min Scan# 2437
 Delta R.T. -0.003 min
 Lab File: BN016407.D
 Acq: 22 Sep 2021 11:46

Instrument :
 BNA_N
ClientSampled :
 SW-RR-02-(1.0)DL



Tgt Ion:264 Resp: 100211

Ion	Ratio	Lower	Upper
264	100		
260	24.1	18.9	28.3
265	25.5	23.7	35.5

