

Data Path : Z:\svoasrv\HPCHEM1\BNA\_N\Data\BN100121\  
 Data File : BN016598.D  
 Acq On : 30 Sep 2021 13:42  
 Operator : CG/JU  
 Sample : SSTDICC0.1  
 Misc :  
 ALS Vial : 2 Sample Multiplier: 1

Instrument :  
 BNA\_N  
 ClientSampled :  
 SSTDICC0.1

Manual Integrations  
 APPROVED

mohammad  
 10/1/2021 9:17:14 AM

Quant Time: Sep 30 15:28:46 2021  
 Quant Method : Z:\SVOASRV\HPCHEM1\BNA\_N\METHODS\8270-SIM-BN100121.M  
 Quant Title : ASP BNA STANDARDS FOR 5 POINT CALIBRATION  
 QLast Update : Thu Sep 30 15:26:45 2021  
 Response via : Initial Calibration

Compound	R.T.	QIon	Response	Conc	Units	Dev(Min)	
Internal Standards							
1) 1,4-Dichlorobenzene-d4	7.642	152	28425	0.40	ng	0.00	
7) Naphthalene-d8	10.407	136	127414	0.40	ng	0.00	
13) Acenaphthene-d10	14.269	164	66280	0.40	ng	0.00	
19) Phenanthrene-d10	17.030	188	115385	0.40	ng	0.00	
29) Chrysene-d12	21.238	240	98789	0.40	ng	0.00	
35) Perylene-d12	23.488	264	98761	0.40	ng	0.00	
System Monitoring Compounds							
4) 2-Fluorophenol	5.254	112	7466	0.10	ng	0.00	
5) Phenol-d6	6.822	99	7877	0.10	ng	0.00	
8) Nitrobenzene-d5	8.784	82	8019	0.10	ng	0.00	
11) 2-Methylnaphthalene-d10	12.007	152	18725	0.10	ng	0.00	
14) 2,4,6-Tribromophenol	15.766	330	2467	0.08	ng	0.00	
15) 2-Fluorobiphenyl	12.898	172	28259	0.10	ng	0.00	
27) Fluoranthene-d10	19.068	212	27938	0.09	ng	0.00	
31) Terphenyl-d14	19.678	244	24097	0.11	ng	0.00	
Target Compounds							
2) 1,4-Dioxane	3.253	88	1572m	0.11	ng		Qvalue
3) n-Nitrosodimethylamine	3.576	42	1903	0.09	ng	#	86
6) bis(2-Chloroethyl)ether	7.080	93	7925	0.10	ng		100
9) Naphthalene	10.457	128	35908	0.10	ng		99
10) Hexachlorobutadiene	10.749	225	6620	0.10	ng	#	100
12) 2-Methylnaphthalene	12.078	142	22345	0.10	ng		99
16) Acenaphthylene	13.990	152	25635	0.09	ng		100
17) Acenaphthene	14.332	154	18779	0.10	ng		99
18) Fluorene	15.322	166	21863	0.09	ng		100
20) 4,6-Dinitro-2-methylph...	15.411	198	799	0.06	ng	#	70
21) 4-Bromophenyl-phenylether	16.226	248	6763	0.09	ng		97
22) Hexachlorobenzene	16.336	284	8148	0.10	ng		99
23) Atrazine	16.506	200	4507	0.09	ng		98
24) Pentachlorophenol	16.677	266	2595	0.09	ng		100
25) Phenanthrene	17.066	178	34149	0.10	ng		99
26) Anthracene	17.163	178	27070	0.09	ng		100
28) Fluoranthene	19.098	202	34370	0.09	ng		99
30) Pyrene	19.460	202	34871	0.11	ng		100
32) Benzo(a)anthracene	21.217	228	30992	0.10	ng		100
33) Chrysene	21.270	228	32759	0.10	ng		100
34) Bis(2-ethylhexyl)phtha...	21.174	149	15319	0.14	ng		99
36) Indeno(1,2,3-cd)pyrene	25.767	276	35673	0.10	ng		97
37) Benzo(b)fluoranthene	22.810	252	31892	0.10	ng		96
38) Benzo(k)fluoranthene	22.855	252	32153	0.10	ng	#	90
39) Benzo(a)pyrene	23.389	252	27705	0.10	ng	#	94
40) Dibenzo(a,h)anthracene	25.788	278	28276	0.10	ng	#	93
41) Benzo(g,h,i)perylene	26.459	276	31941	0.10	ng		98

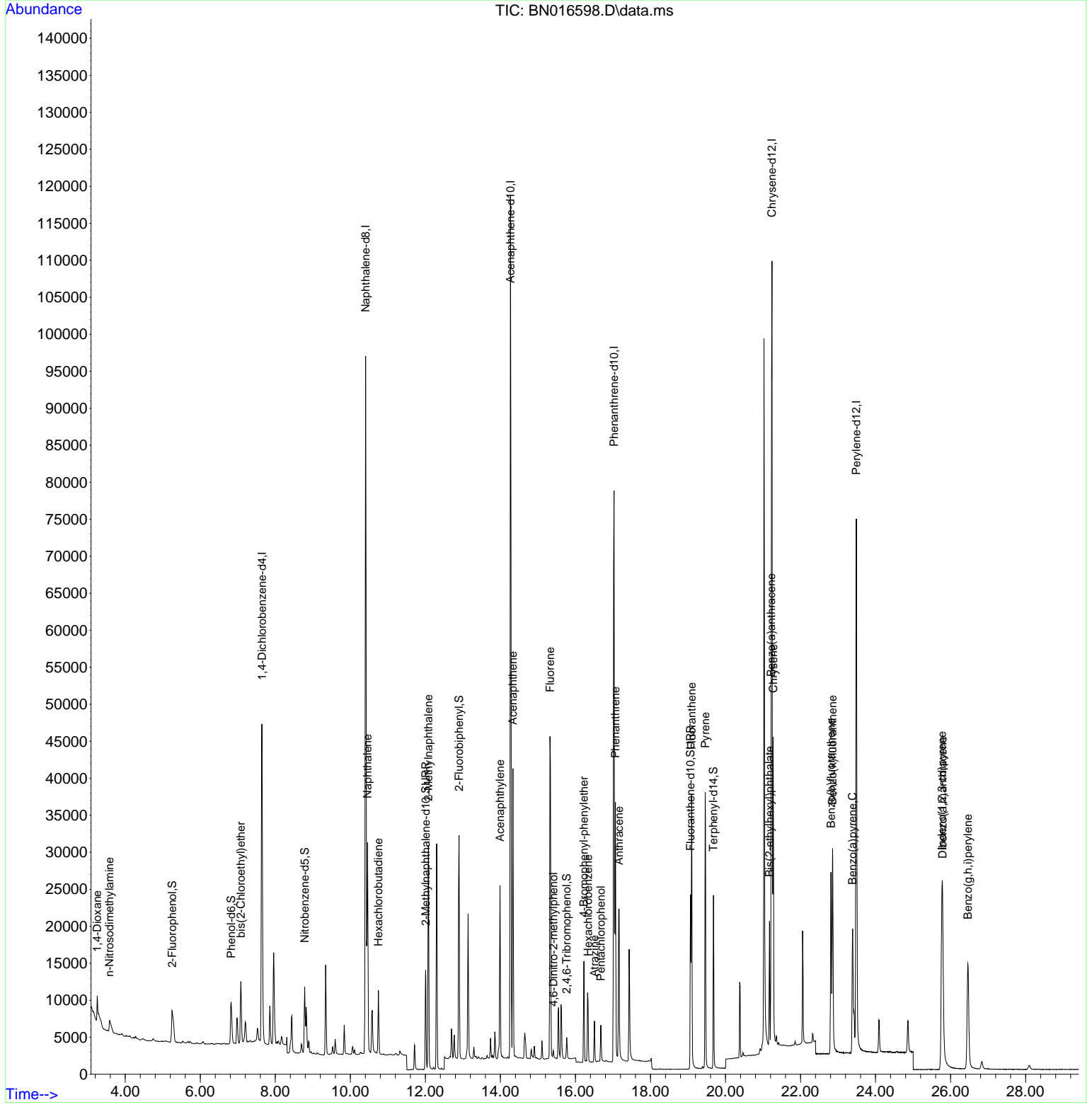
(#) = qualifier out of range (m) = manual integration (+) = signals summed

Data Path : Z:\svoasrv\HPCHEM1\BNA\_N\Data\BN100121\  
 Data File : BN016598.D  
 Acq On : 30 Sep 2021 13:42  
 Operator : CG/JU  
 Sample : SSTDICC0.1  
 Misc :  
 ALS Vial : 2 Sample Multiplier: 1

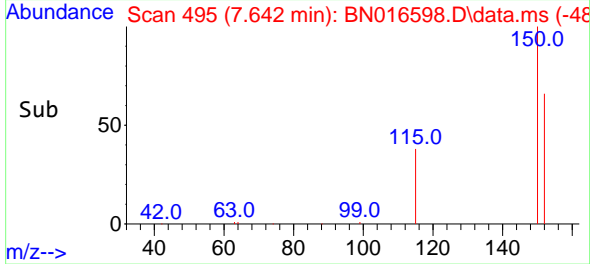
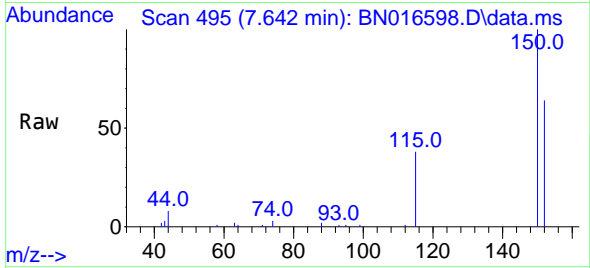
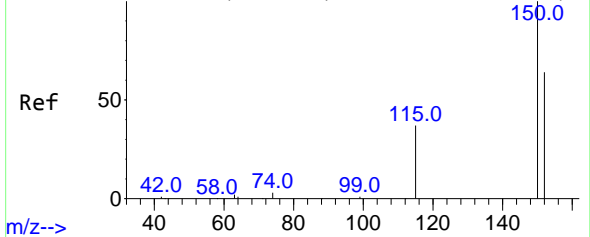
Instrument :  
 BNA\_N  
 Client Sampled :  
 SSTDICC0.1

Manual Integrations  
**APPROVED**  
 mohammad  
 10/1/2021 9:17:14 AM

Quant Time: Sep 30 15:28:46 2021  
 Quant Method : Z:\SVOASRV\HPCHEM1\BNA\_N\METHODS\8270-SIM-BN100121.M  
 Quant Title : ASP BNA STANDARDS FOR 5 POINT CALIBRATION  
 QLast Update : Thu Sep 30 15:26:45 2021  
 Response via : Initial Calibration



Abundance Scan 495 (7.642 min): BN016600.D\data.ms (-48)



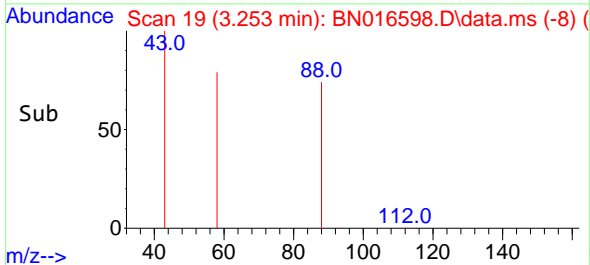
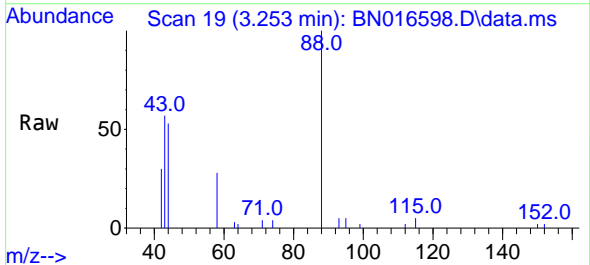
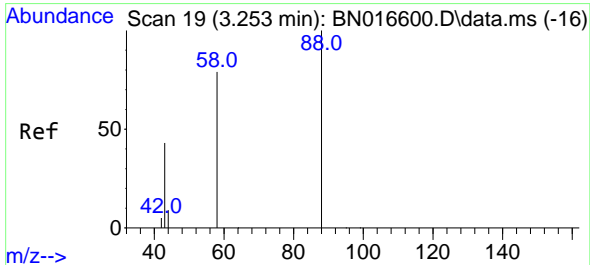
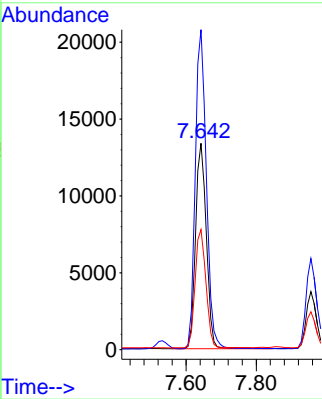
#1  
 1,4-Dichlorobenzene-d4  
 Concen: 0.40 ng  
 RT: 7.642 min Scan# 495  
 Delta R.T. 0.000 min  
 Lab File: BN016598.D  
 Acq: 30 Sep 2021 13:42

Tgt Ion: 152 Resp: 28425

Ion	Ratio	Lower	Upper
152	100		
150	155.1	124.6	186.8
115	58.2	46.5	69.7

**Instrument :**  
 BNA\_N  
**ClientSampled :**  
 SSTDICC0.1

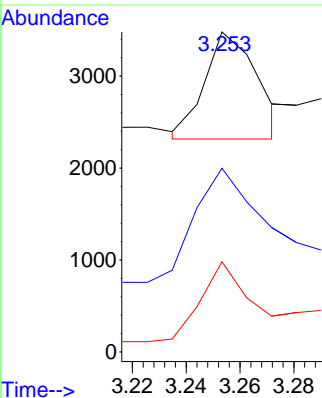
**Manual Integrations**  
**APPROVED**  
 mohammad  
 10/1/2021 9:17:14 AM

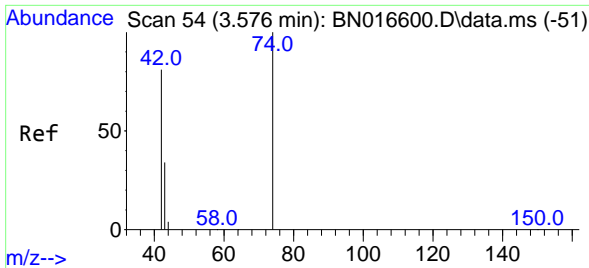


#2  
 1,4-Dioxane  
 Concen: 0.11 ng m  
 RT: 3.253 min Scan# 19  
 Delta R.T. 0.000 min  
 Lab File: BN016598.D  
 Acq: 30 Sep 2021 13:42

Tgt Ion: 88 Resp: 1572

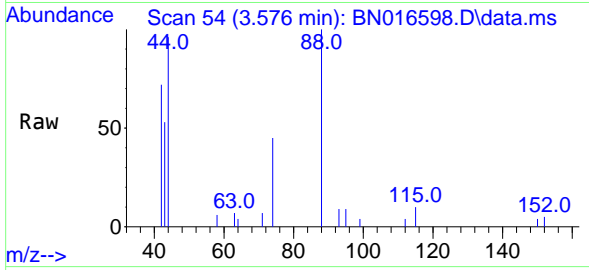
Ion	Ratio	Lower	Upper
88	100		
43	143.6	37.8	56.8#
58	71.6	61.3	91.9





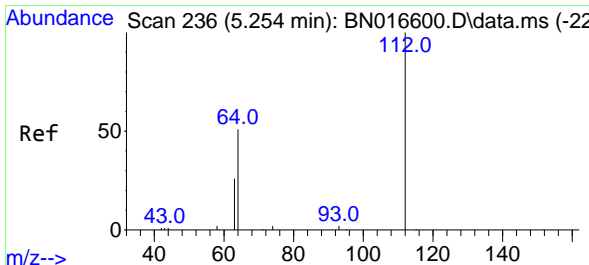
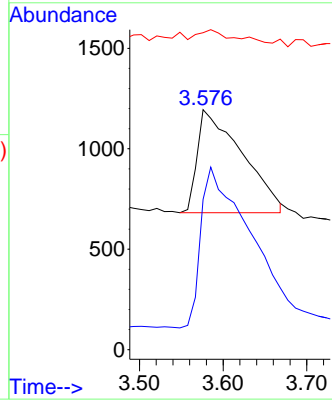
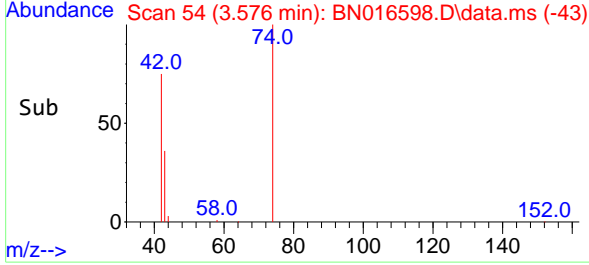
#3  
 n-Nitrosodimethylamine  
 Concen: 0.09 ng  
 RT: 3.576 min Scan# 54  
 Delta R.T. 0.000 min  
 Lab File: BN016598.D  
 Acq: 30 Sep 2021 13:42

**Instrument :**  
 BNA\_N  
**ClientSampled :**  
 SSTDICC0.1

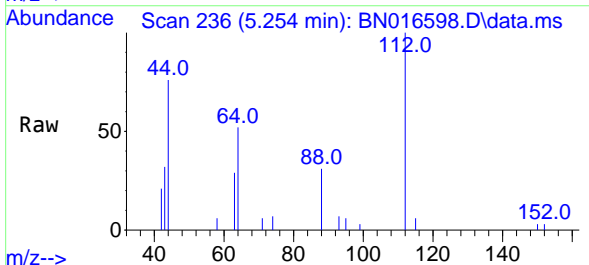


Tgt Ion: 42 Resp: 1903  
 Ion Ratio Lower Upper  
 42 100  
 74 170.2 121.6 182.4  
 44 9.8 6.3 9.5#

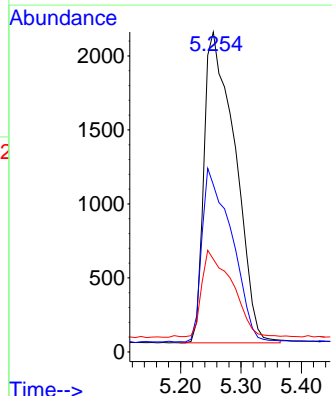
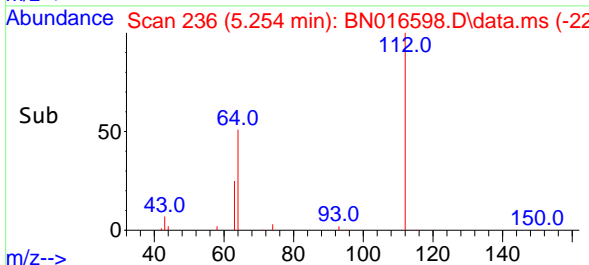
**Manual Integrations**  
**APPROVED**  
 mohammad  
 10/1/2021 9:17:14 AM

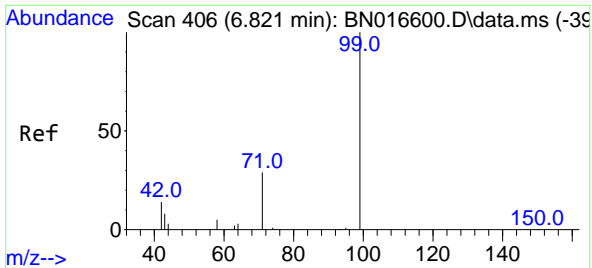


#4  
 2-Fluorophenol  
 Concen: 0.10 ng  
 RT: 5.254 min Scan# 236  
 Delta R.T. 0.000 min  
 Lab File: BN016598.D  
 Acq: 30 Sep 2021 13:42



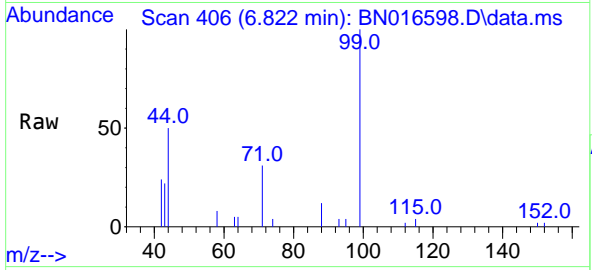
Tgt Ion: 112 Resp: 7466  
 Ion Ratio Lower Upper  
 112 100  
 64 53.7 43.1 64.7  
 63 27.7 21.6 32.4





#5  
Phenol-d6  
Concen: 0.10 ng  
RT: 6.822 min Scan# 406  
Delta R.T. 0.000 min  
Lab File: BN016598.D  
Acq: 30 Sep 2021 13:42

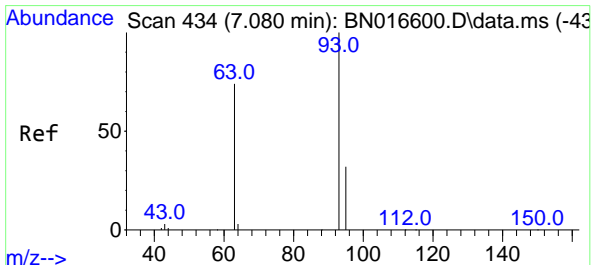
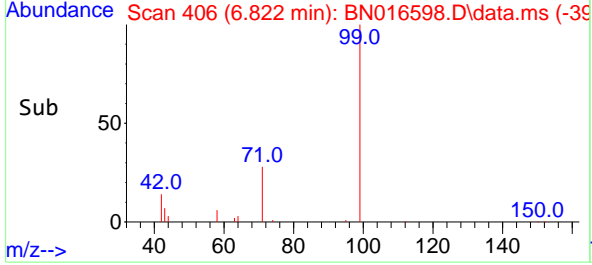
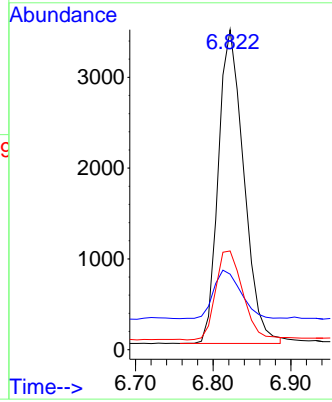
**Instrument :**  
BNA\_N  
**ClientSampled :**  
SSTDIC0.1



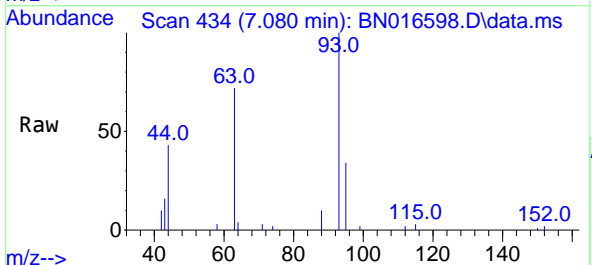
Tgt Ion: 99 Resp: 7877

Ion	Ratio	Lower	Upper
99	100		
42	16.5	13.0	19.6
71	30.4	23.5	35.3

**Manual Integrations**  
**APPROVED**  
mohammad  
10/1/2021 9:17:14 AM

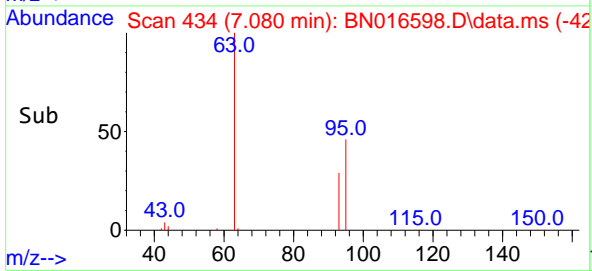
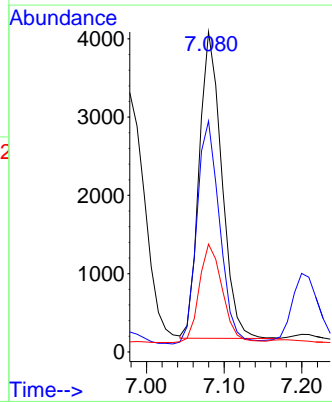


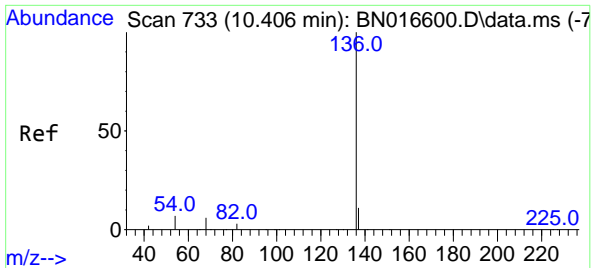
#6  
bis(2-Chloroethyl)ether  
Concen: 0.10 ng  
RT: 7.080 min Scan# 434  
Delta R.T. 0.000 min  
Lab File: BN016598.D  
Acq: 30 Sep 2021 13:42



Tgt Ion: 93 Resp: 7925

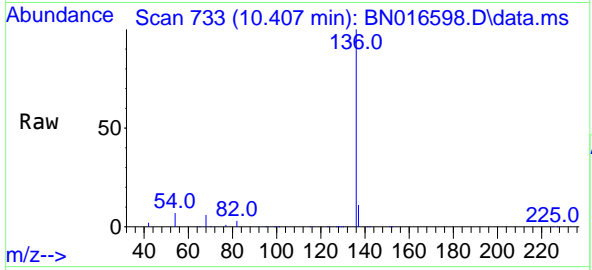
Ion	Ratio	Lower	Upper
93	100		
63	74.0	59.1	88.7
95	32.9	26.2	39.4





#7  
 Naphthalene-d8  
 Concen: 0.40 ng  
 RT: 10.407 min Scan# 733  
 Delta R.T. 0.000 min  
 Lab File: BN016598.D  
 Acq: 30 Sep 2021 13:42

Instrument :  
 BNA\_N  
 ClientSampled :  
 SSTDICC0.1

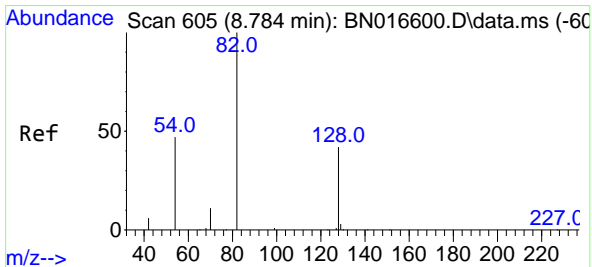
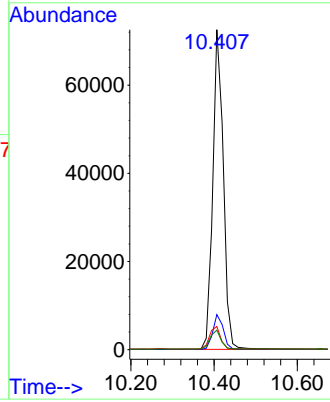
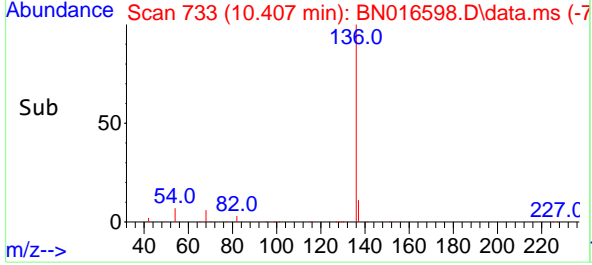


Tgt Ion: 136 Resp: 127414

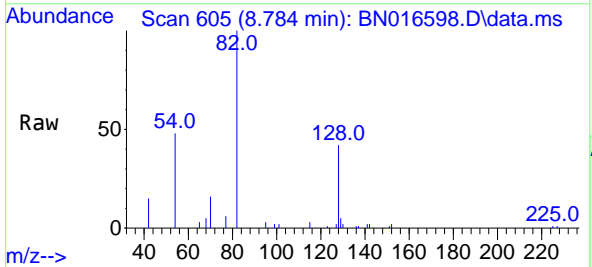
Ion	Ratio	Lower	Upper
136	100		
137	11.0	8.7	13.1
54	7.3	5.9	8.9
68	6.1	5.0	7.6

Manual Integrations  
 APPROVED

mohammad  
 10/1/2021 9:17:14 AM

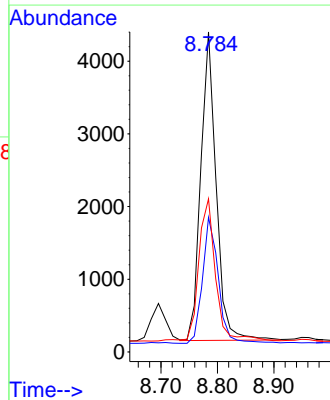
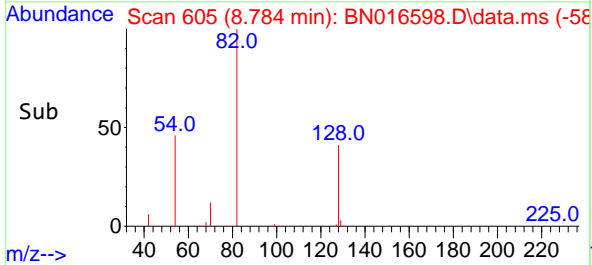


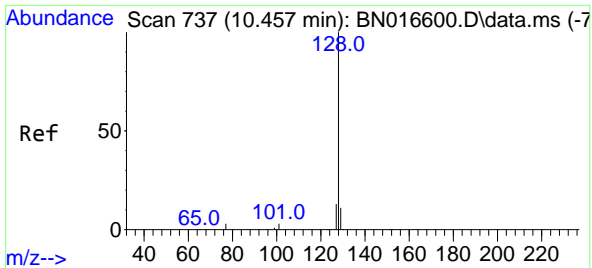
#8  
 Nitrobenzene-d5  
 Concen: 0.10 ng  
 RT: 8.784 min Scan# 605  
 Delta R.T. 0.000 min  
 Lab File: BN016598.D  
 Acq: 30 Sep 2021 13:42



Tgt Ion: 82 Resp: 8019

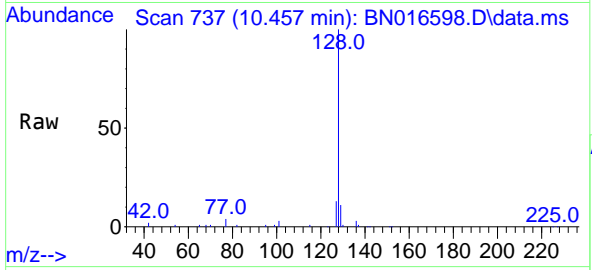
Ion	Ratio	Lower	Upper
82	100		
128	42.1	33.6	50.4
54	47.8	37.6	56.4





#9  
 Naphthalene  
 Concen: 0.10 ng  
 RT: 10.457 min Scan# 737  
 Delta R.T. 0.000 min  
 Lab File: BN016598.D  
 Acq: 30 Sep 2021 13:42

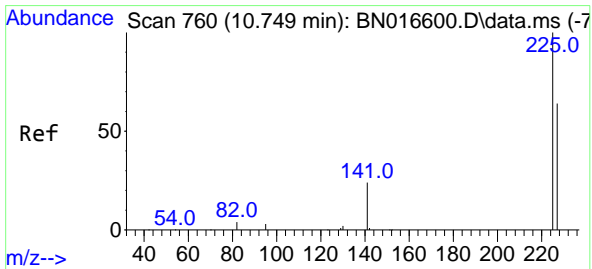
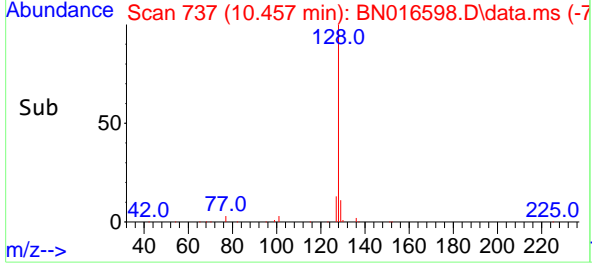
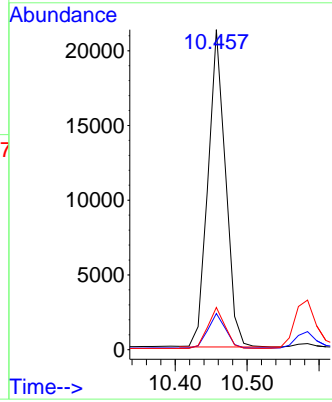
**Instrument :**  
 BNA\_N  
**ClientSampled :**  
 SSTDICC0.1



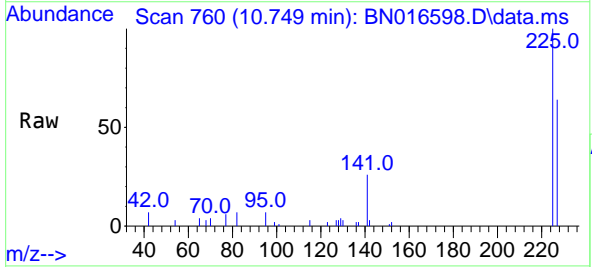
Tgt Ion:128 Resp: 35908

Ion	Ratio	Lower	Upper
128	100		
129	11.3	8.8	13.2
127	13.2	10.3	15.5

**Manual Integrations**  
**APPROVED**  
 mohammad  
 10/1/2021 9:17:14 AM

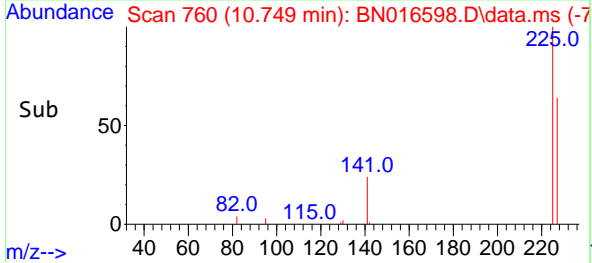
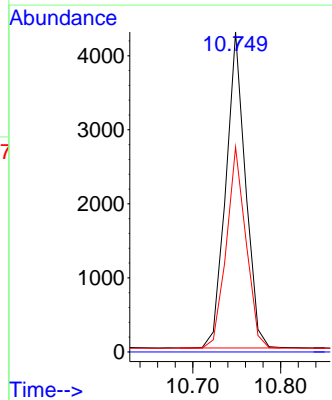


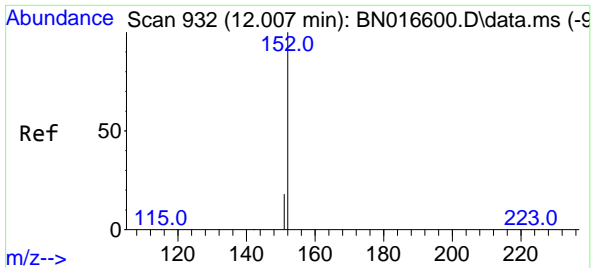
#10  
 Hexachlorobutadiene  
 Concen: 0.10 ng  
 RT: 10.749 min Scan# 760  
 Delta R.T. 0.000 min  
 Lab File: BN016598.D  
 Acq: 30 Sep 2021 13:42



Tgt Ion:225 Resp: 6620

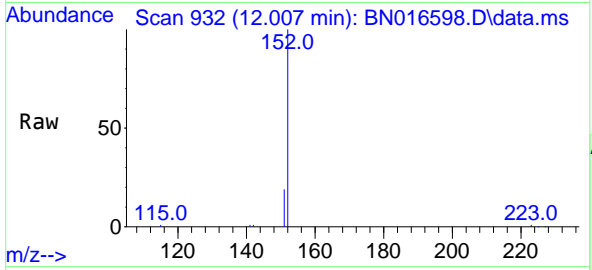
Ion	Ratio	Lower	Upper
225	100		
223	0.0	0.0	0.0
227	63.6	51.0	76.6





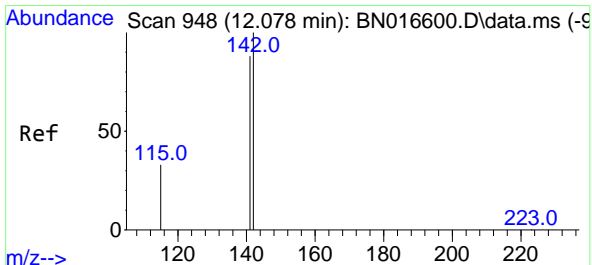
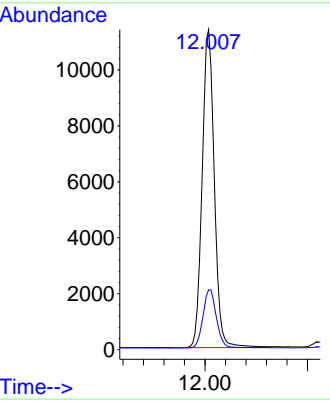
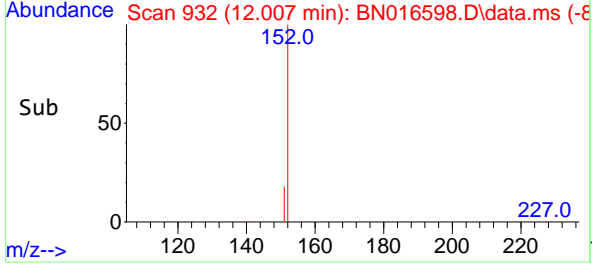
#11  
 2-Methylnaphthalene-d10  
 Concen: 0.10 ng  
 RT: 12.007 min Scan# 932  
 Delta R.T. 0.000 min  
 Lab File: BN016598.D  
 Acq: 30 Sep 2021 13:42

**Instrument :**  
 BNA\_N  
**ClientSampled :**  
 SSTDICC0.1

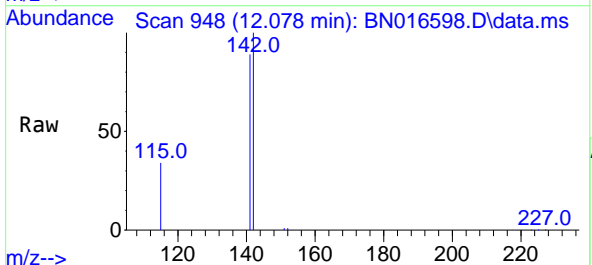


Tgt Ion:152 Resp: 18725  
 Ion Ratio Lower Upper  
 152 100  
 151 20.3 16.2 24.4

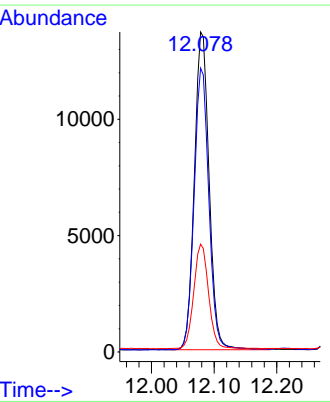
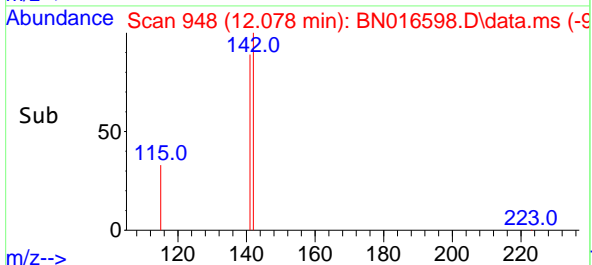
**Manual Integrations**  
**APPROVED**  
 mohammad  
 10/1/2021 9:17:14 AM



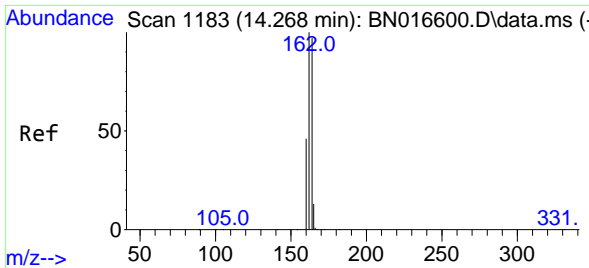
#12  
 2-Methylnaphthalene  
 Concen: 0.10 ng  
 RT: 12.078 min Scan# 948  
 Delta R.T. 0.000 min  
 Lab File: BN016598.D  
 Acq: 30 Sep 2021 13:42



Tgt Ion:142 Resp: 22345  
 Ion Ratio Lower Upper  
 142 100  
 141 88.7 70.6 105.8  
 115 33.7 26.6 39.8

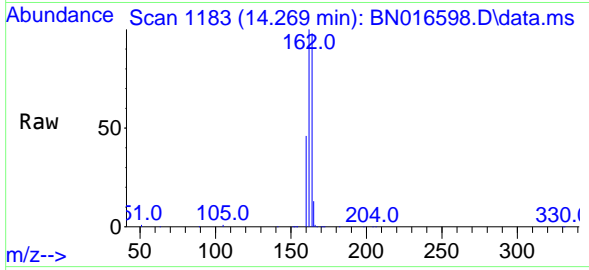






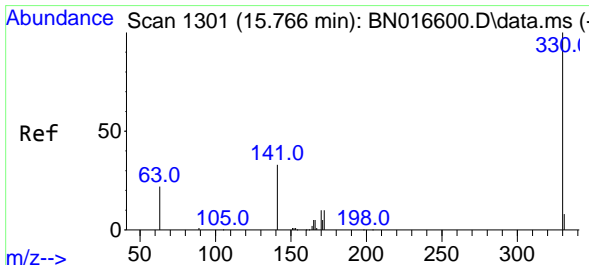
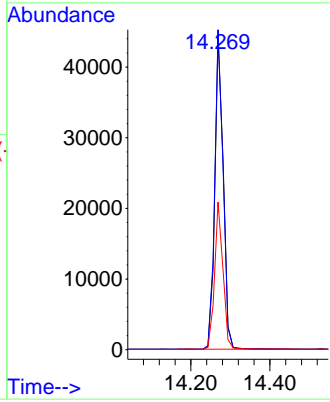
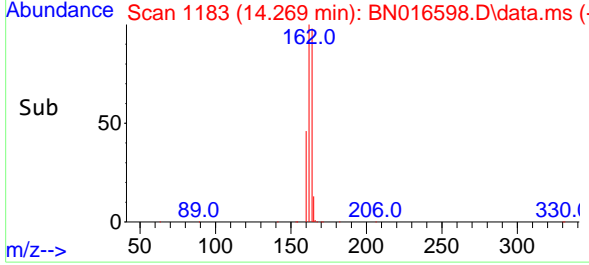
#13  
 Acenaphthene-d10  
 Concen: 0.40 ng  
 RT: 14.269 min Scan# 1183  
 Delta R.T. 0.000 min  
 Lab File: BN016598.D  
 Acq: 30 Sep 2021 13:42

**Instrument :**  
 BNA\_N  
**ClientSampled :**  
 SSTDICC0.1

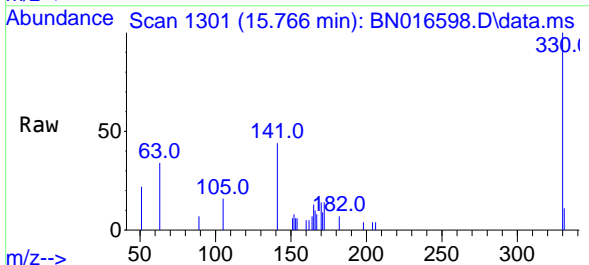


Tgt Ion:164 Resp: 66280  
 Ion Ratio Lower Upper  
 164 100  
 162 102.3 82.2 123.2  
 160 47.1 37.7 56.5

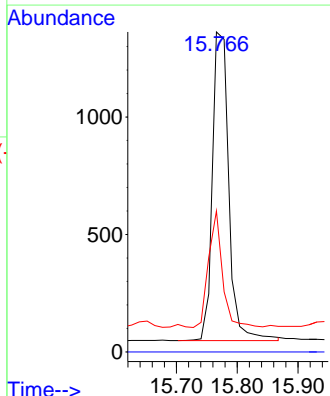
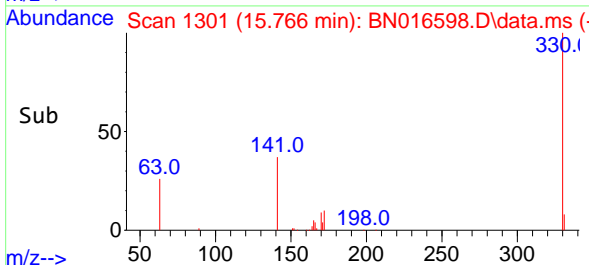
**Manual Integrations**  
**APPROVED**  
 mohammad  
 10/1/2021 9:17:14 AM

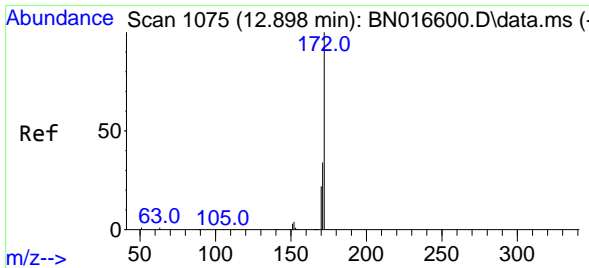


#14  
 2,4,6-Tribromophenol  
 Concen: 0.08 ng  
 RT: 15.766 min Scan# 1301  
 Delta R.T. 0.000 min  
 Lab File: BN016598.D  
 Acq: 30 Sep 2021 13:42



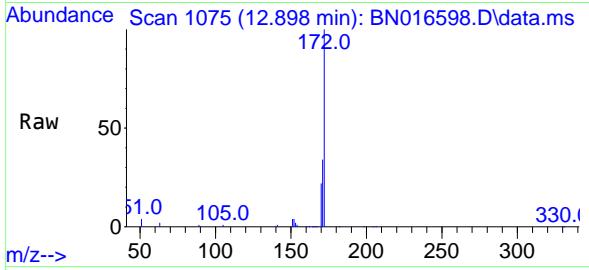
Tgt Ion:330 Resp: 2467  
 Ion Ratio Lower Upper  
 330 100  
 332 0.0 0.0 0.0  
 141 32.0 25.2 37.8





#15  
 2-Fluorobiphenyl  
 Concen: 0.10 ng  
 RT: 12.898 min Scan# 1075  
 Delta R.T. 0.000 min  
 Lab File: BN016598.D  
 Acq: 30 Sep 2021 13:42

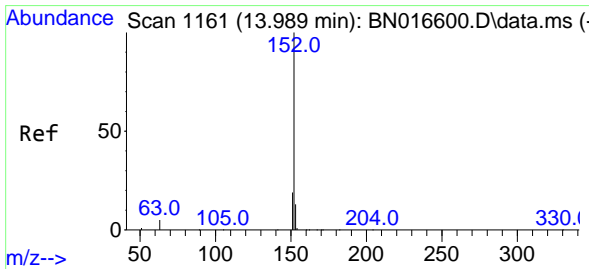
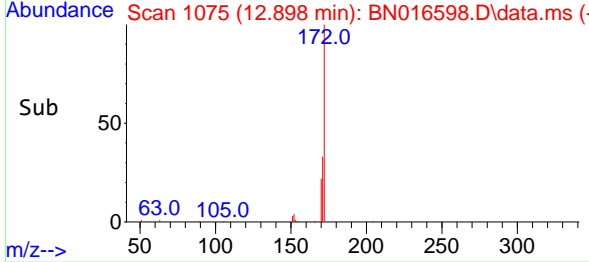
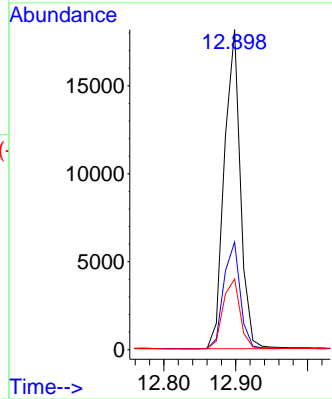
**Instrument :**  
 BNA\_N  
**ClientSampled :**  
 SSTDICC0.1



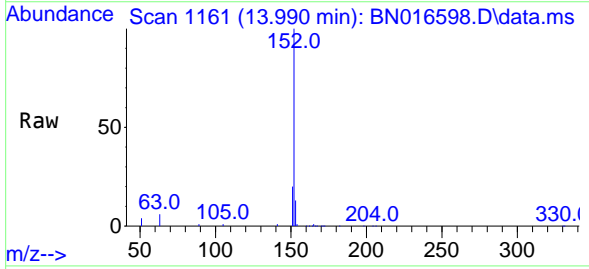
Tgt Ion:172 Resp: 28259

Ion	Ratio	Lower	Upper
172	100		
171	33.7	27.0	40.4
170	22.1	17.4	26.2

**Manual Integrations**  
**APPROVED**  
 mohammad  
 10/1/2021 9:17:14 AM

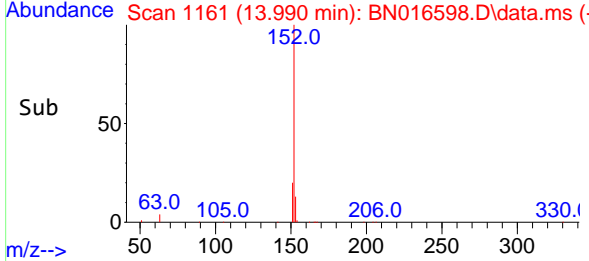
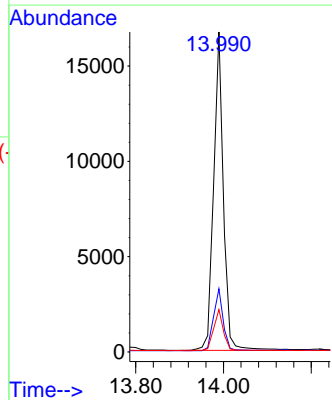


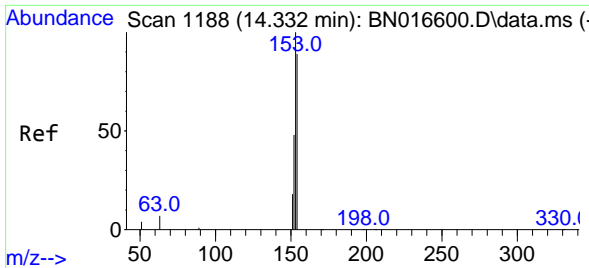
#16  
 Acenaphthylene  
 Concen: 0.09 ng  
 RT: 13.990 min Scan# 1161  
 Delta R.T. 0.000 min  
 Lab File: BN016598.D  
 Acq: 30 Sep 2021 13:42



Tgt Ion:152 Resp: 25635

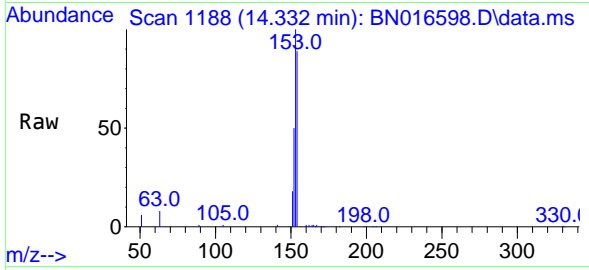
Ion	Ratio	Lower	Upper
152	100		
151	19.4	15.5	23.3
153	13.1	10.4	15.6





#17  
 Acenaphthene  
 Concen: 0.10 ng  
 RT: 14.332 min Scan# 1188  
 Delta R.T. 0.000 min  
 Lab File: BN016598.D  
 Acq: 30 Sep 2021 13:42

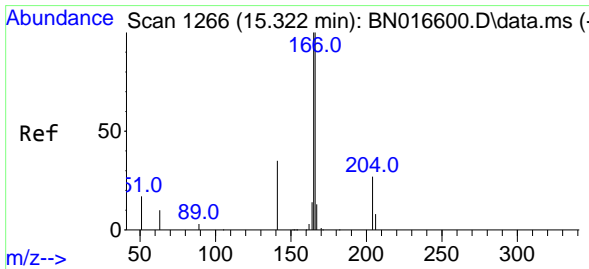
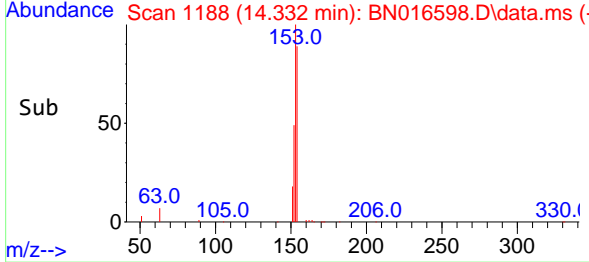
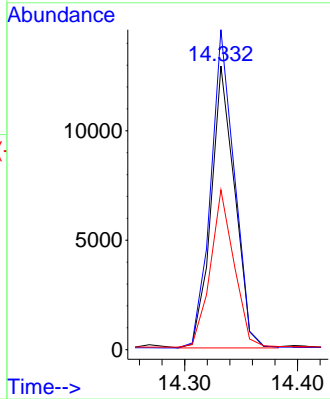
**Instrument :**  
 BNA\_N  
**ClientSampled :**  
 SSTDICC0.1



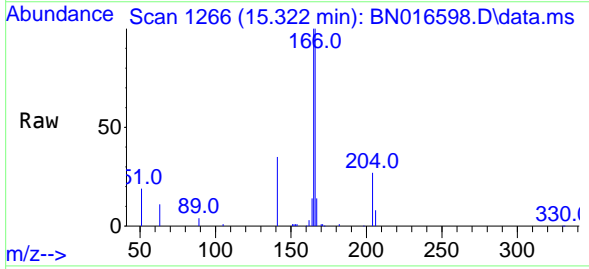
Tgt Ion:154 Resp: 18779

Ion	Ratio	Lower	Upper
154	100		
153	113.1	90.2	135.2
152	56.4	44.0	66.0

**Manual Integrations**  
**APPROVED**  
 mohammad  
 10/1/2021 9:17:14 AM

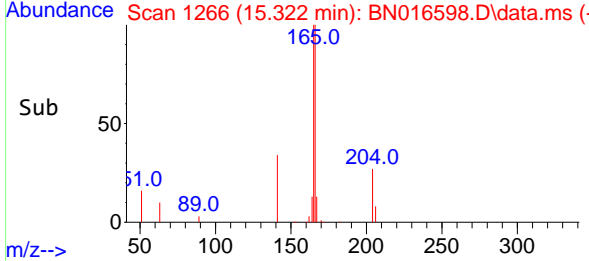
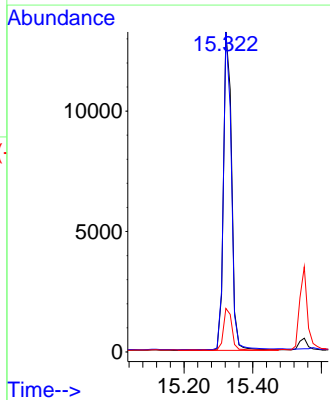


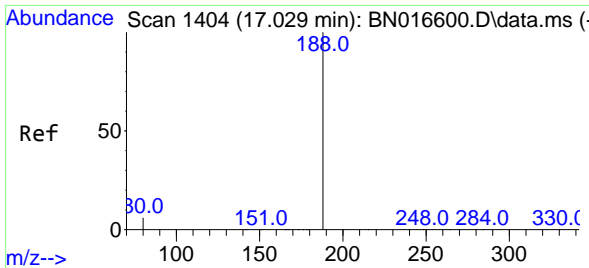
#18  
 Fluorene  
 Concen: 0.09 ng  
 RT: 15.322 min Scan# 1266  
 Delta R.T. 0.000 min  
 Lab File: BN016598.D  
 Acq: 30 Sep 2021 13:42



Tgt Ion:166 Resp: 21863

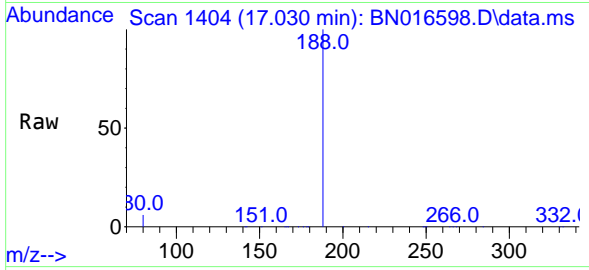
Ion	Ratio	Lower	Upper
166	100		
165	96.9	77.9	116.9
167	13.5	10.7	16.1





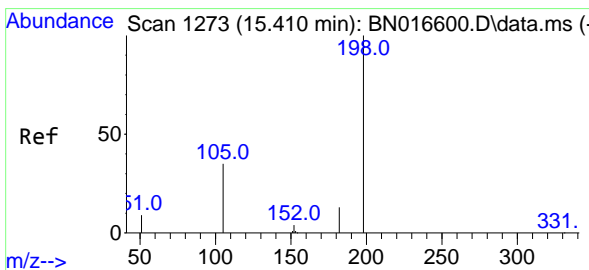
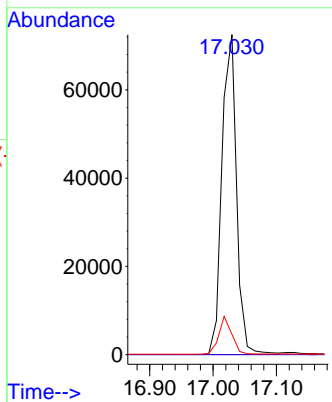
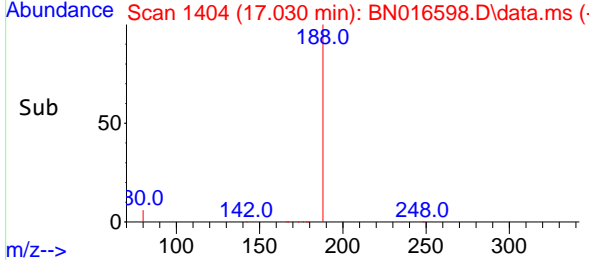
#19  
 Phenanthrene-d10  
 Concen: 0.40 ng  
 RT: 17.030 min Scan# 1404  
 Delta R.T. 0.000 min  
 Lab File: BN016598.D  
 Acq: 30 Sep 2021 13:42

**Instrument :**  
 BNA\_N  
**ClientSampled :**  
 SSTDICC0.1

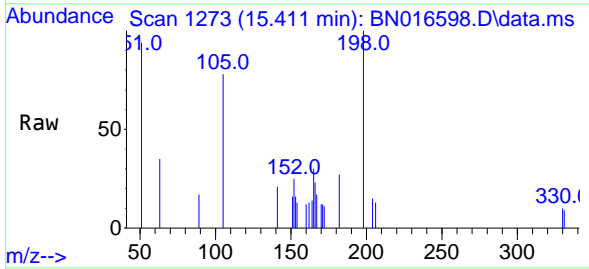


Tgt Ion:188 Resp: 115385  
 Ion Ratio Lower Upper  
 188 100  
 94 0.0 0.0 0.0  
 80 6.3 5.0 7.6

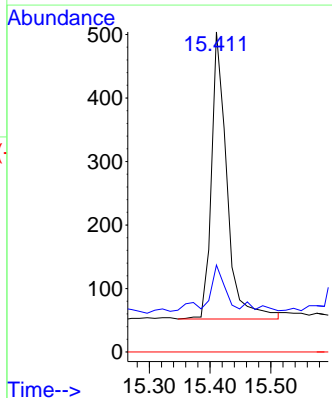
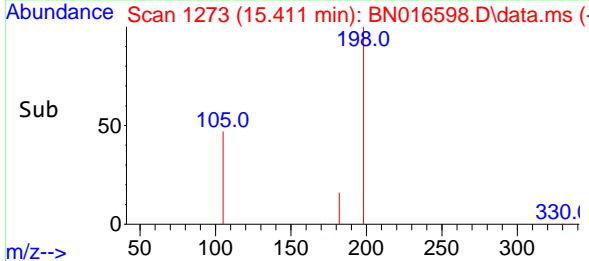
**Manual Integrations**  
**APPROVED**  
 mohammad  
 10/1/2021 9:17:14 AM

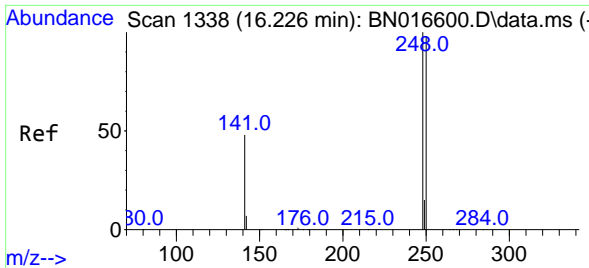


#20  
 4,6-Dinitro-2-methylphenol  
 Concen: 0.06 ng  
 RT: 15.411 min Scan# 1273  
 Delta R.T. 0.000 min  
 Lab File: BN016598.D  
 Acq: 30 Sep 2021 13:42



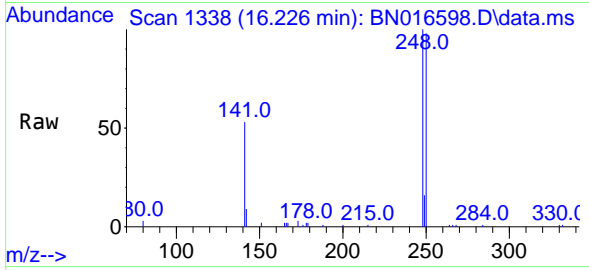
Tgt Ion:198 Resp: 799  
 Ion Ratio Lower Upper  
 198 100  
 182 27.2 11.8 17.8#  
 77 0.0 0.0 0.0





#21  
 4-Bromophenyl-phenylether  
 Concen: 0.09 ng  
 RT: 16.226 min Scan# 1338  
 Delta R.T. 0.000 min  
 Lab File: BN016598.D  
 Acq: 30 Sep 2021 13:42

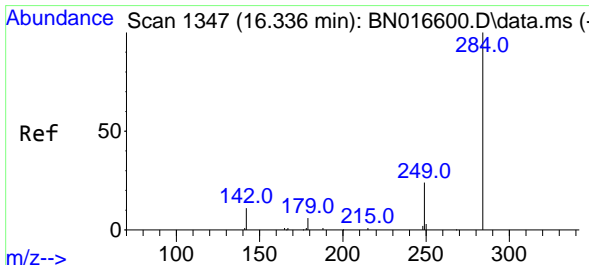
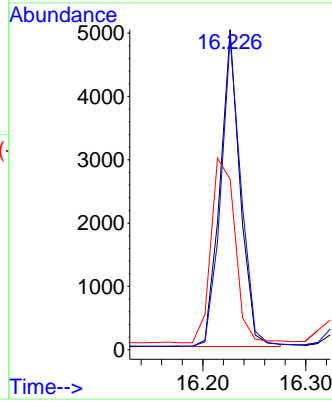
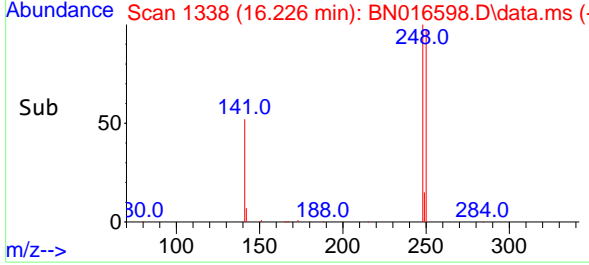
**Instrument :**  
 BNA\_N  
**ClientSampled :**  
 SSTDICC0.1



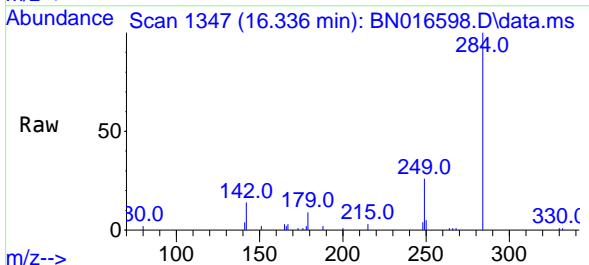
Tgt Ion:248 Resp: 6763

Ion	Ratio	Lower	Upper
248	100		
250	97.5	78.6	117.8
141	53.3	38.6	57.8

**Manual Integrations**  
**APPROVED**  
 mohammad  
 10/1/2021 9:17:14 AM

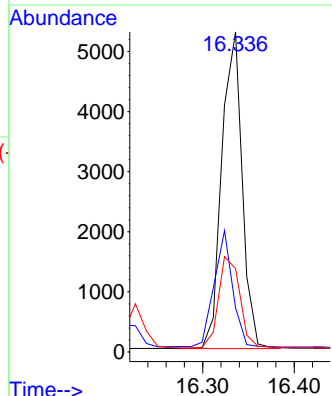
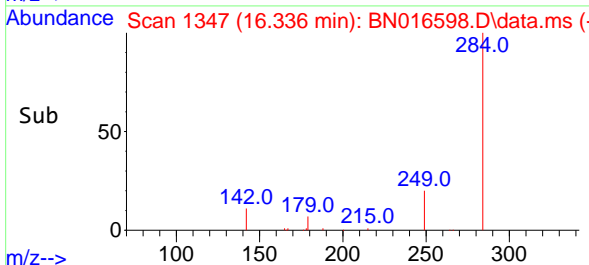


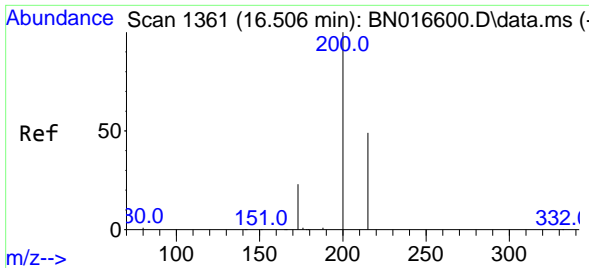
#22  
 Hexachlorobenzene  
 Concen: 0.10 ng  
 RT: 16.336 min Scan# 1347  
 Delta R.T. 0.000 min  
 Lab File: BN016598.D  
 Acq: 30 Sep 2021 13:42



Tgt Ion:284 Resp: 8148

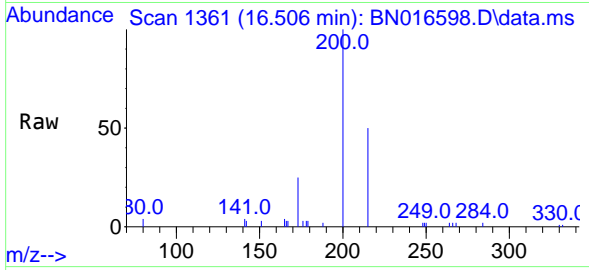
Ion	Ratio	Lower	Upper
284	100		
142	33.3	26.4	39.6
249	30.1	23.4	35.2





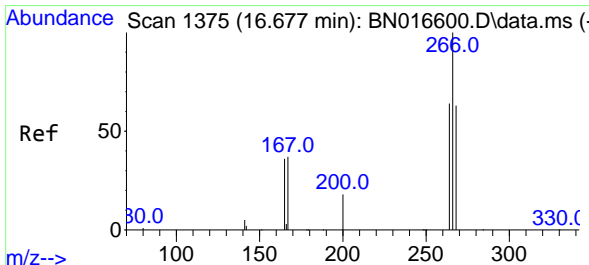
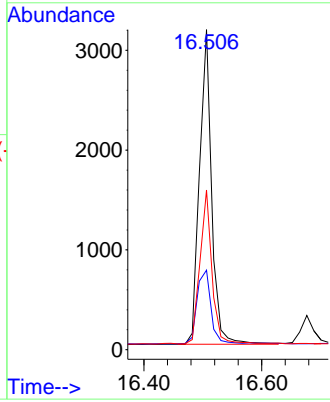
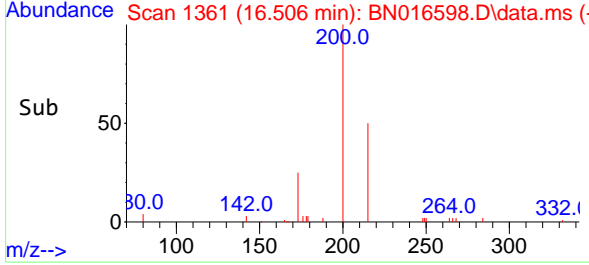
#23  
 Atrazine  
 Concen: 0.09 ng  
 RT: 16.506 min Scan# 1361  
 Delta R.T. 0.000 min  
 Lab File: BN016598.D  
 Acq: 30 Sep 2021 13:42

**Instrument :**  
 BNA\_N  
**ClientSampled :**  
 SSTDICC0.1

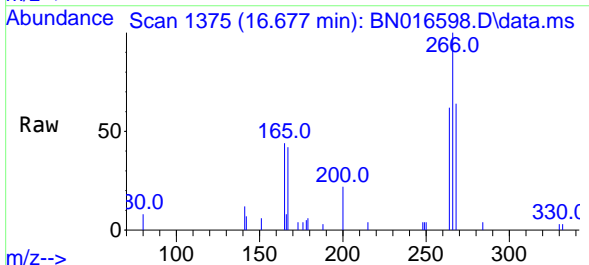


Tgt Ion:200 Resp: 4507  
 Ion Ratio Lower Upper  
 200 100  
 173 24.9 18.6 27.8  
 215 49.9 39.4 59.2

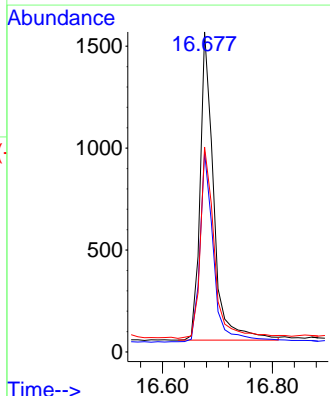
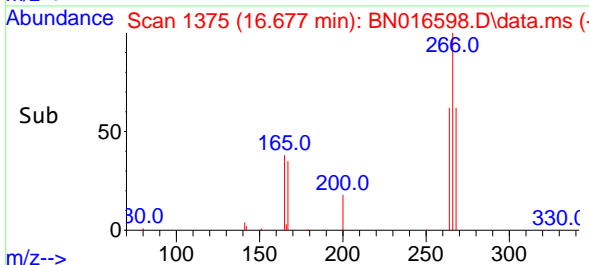
**Manual Integrations**  
**APPROVED**  
 mohammad  
 10/1/2021 9:17:14 AM

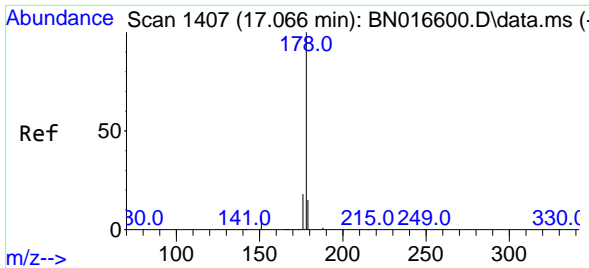


#24  
 Pentachlorophenol  
 Concen: 0.09 ng  
 RT: 16.677 min Scan# 1375  
 Delta R.T. 0.000 min  
 Lab File: BN016598.D  
 Acq: 30 Sep 2021 13:42



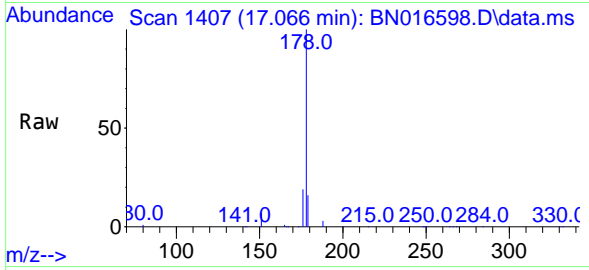
Tgt Ion:266 Resp: 2595  
 Ion Ratio Lower Upper  
 266 100  
 264 62.2 49.8 74.6  
 268 64.4 51.4 77.2





#25  
 Phenanthrene  
 Concen: 0.10 ng  
 RT: 17.066 min Scan# 1407  
 Delta R.T. 0.000 min  
 Lab File: BN016598.D  
 Acq: 30 Sep 2021 13:42

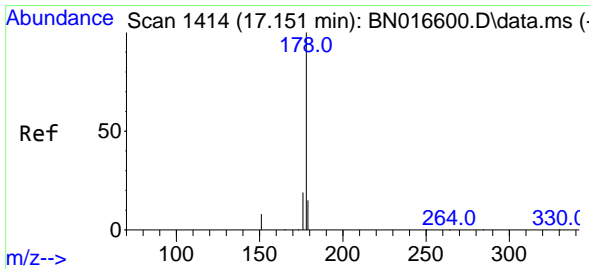
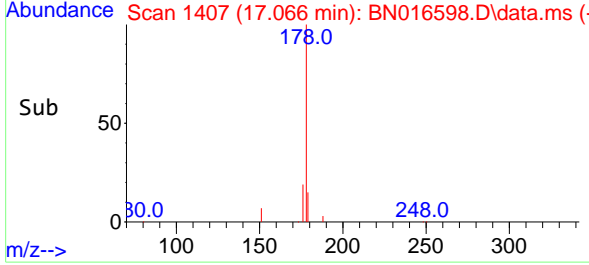
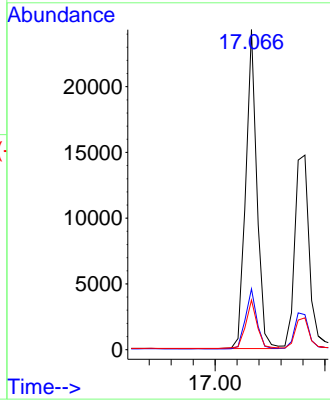
**Instrument :**  
 BNA\_N  
**ClientSampled :**  
 SSTDICC0.1



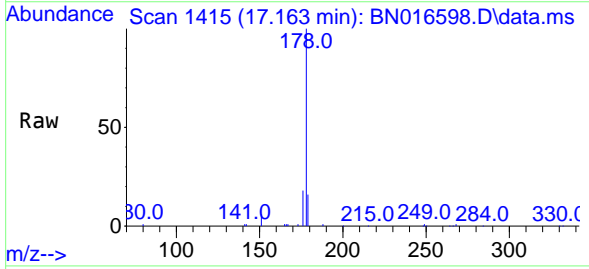
Tgt Ion:178 Resp: 34149

Ion	Ratio	Lower	Upper
178	100		
176	18.9	15.0	22.4
179	15.6	12.2	18.4

**Manual Integrations**  
**APPROVED**  
 mohammad  
 10/1/2021 9:17:14 AM

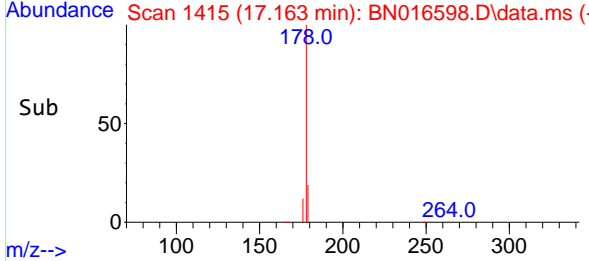
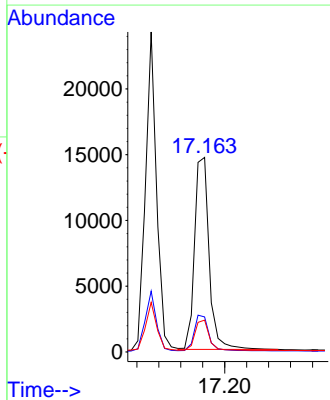


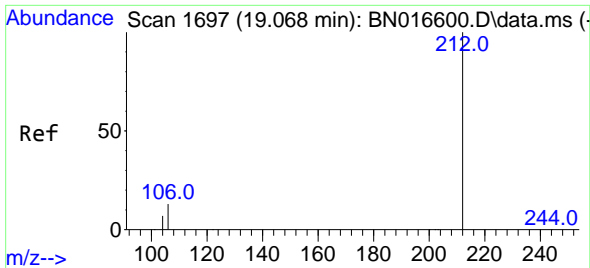
#26  
 Anthracene  
 Concen: 0.09 ng  
 RT: 17.163 min Scan# 1415  
 Delta R.T. 0.012 min  
 Lab File: BN016598.D  
 Acq: 30 Sep 2021 13:42



Tgt Ion:178 Resp: 27070

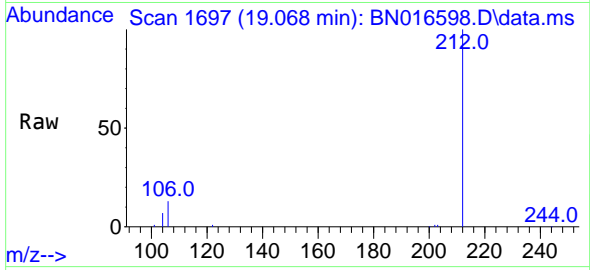
Ion	Ratio	Lower	Upper
178	100		
176	18.4	14.6	21.8
179	15.2	12.2	18.4





#27  
 Fluoranthene-d10  
 Concen: 0.09 ng  
 RT: 19.068 min Scan# 1697  
 Delta R.T. 0.000 min  
 Lab File: BN016598.D  
 Acq: 30 Sep 2021 13:42

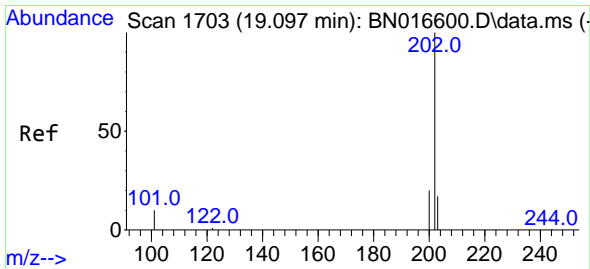
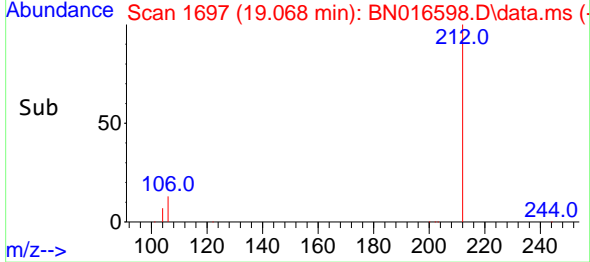
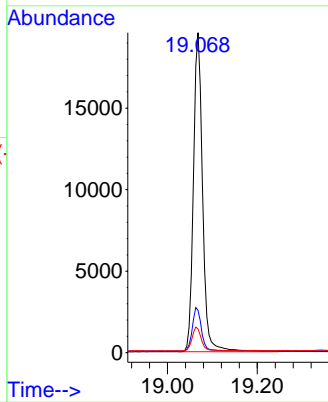
**Instrument :**  
 BNA\_N  
**ClientSampled :**  
 SSTDICC0.1



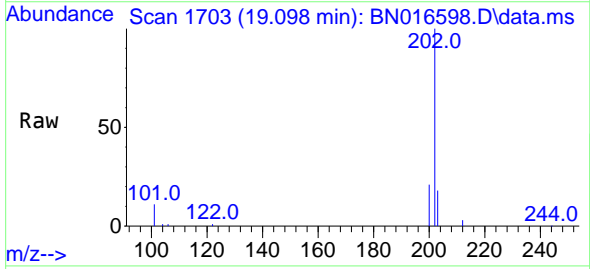
Tgt Ion: 212 Resp: 27938  

Ion	Ratio	Lower	Upper
212	100		
106	13.4	10.6	16.0
104	7.5	5.9	8.9

**Manual Integrations**  
**APPROVED**  
 mohammad  
 10/1/2021 9:17:14 AM

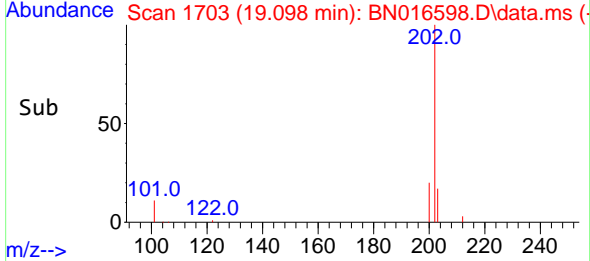
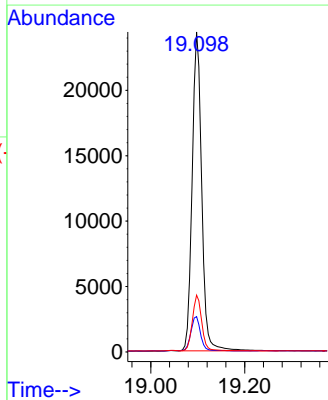


#28  
 Fluoranthene  
 Concen: 0.09 ng  
 RT: 19.098 min Scan# 1703  
 Delta R.T. 0.000 min  
 Lab File: BN016598.D  
 Acq: 30 Sep 2021 13:42

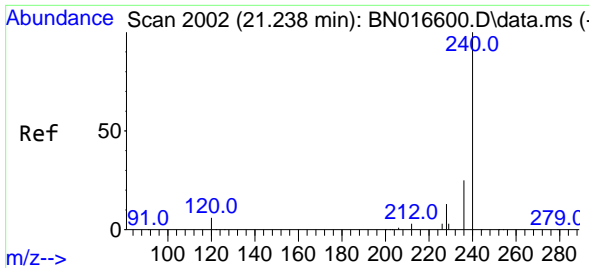


Tgt Ion: 202 Resp: 34370  

Ion	Ratio	Lower	Upper
202	100		
101	10.8	9.0	13.4
203	17.1	13.8	20.6

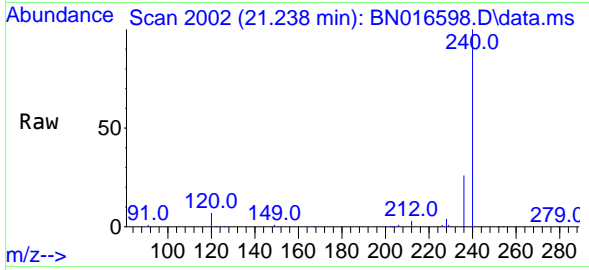






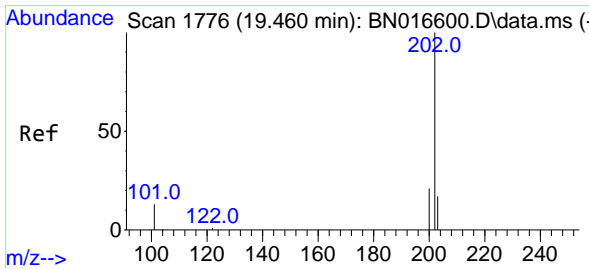
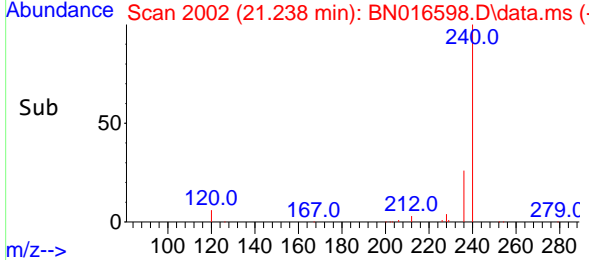
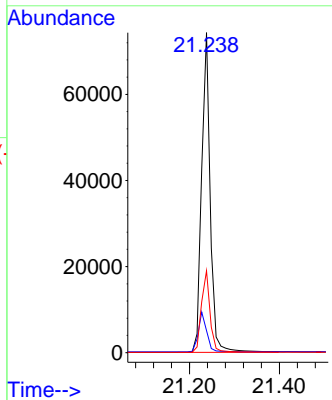
#29  
 Chrysene-d12  
 Concen: 0.40 ng  
 RT: 21.238 min Scan# 2002  
 Delta R.T. 0.000 min  
 Lab File: BN016598.D  
 Acq: 30 Sep 2021 13:42

**Instrument :**  
 BNA\_N  
**ClientSampled :**  
 SSTDICC0.1

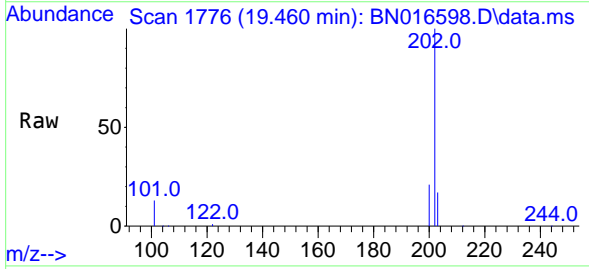


Tgt Ion:240 Resp: 98789  
 Ion Ratio Lower Upper  
 240 100  
 120 6.9 5.0 7.4  
 236 25.6 20.4 30.6

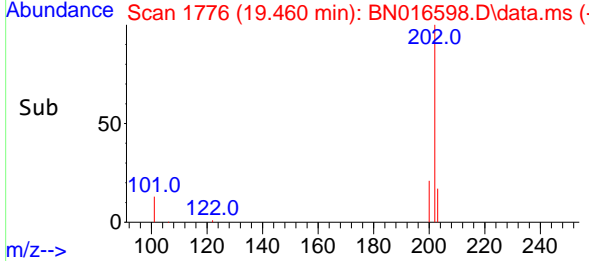
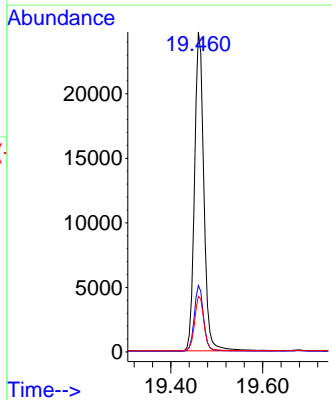
**Manual Integrations**  
**APPROVED**  
 mohammad  
 10/1/2021 9:17:14 AM

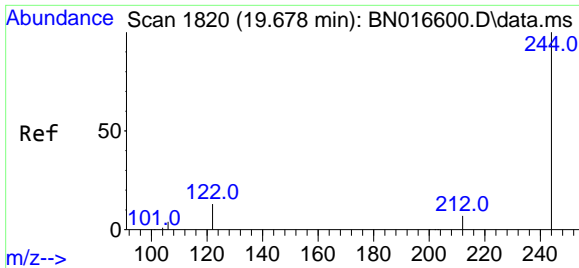


#30  
 Pyrene  
 Concen: 0.11 ng  
 RT: 19.460 min Scan# 1776  
 Delta R.T. 0.000 min  
 Lab File: BN016598.D  
 Acq: 30 Sep 2021 13:42



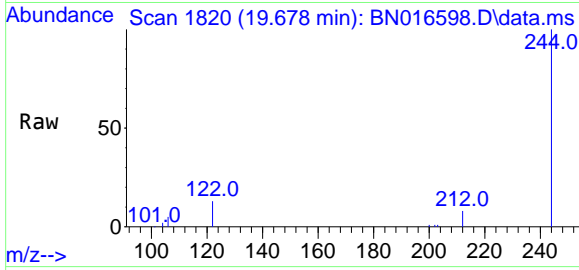
Tgt Ion:202 Resp: 34871  
 Ion Ratio Lower Upper  
 202 100  
 200 20.6 16.5 24.7  
 203 17.4 14.0 21.0





#31  
 Terphenyl-d14  
 Concen: 0.11 ng  
 RT: 19.678 min Scan# 1820  
 Delta R.T. 0.000 min  
 Lab File: BN016598.D  
 Acq: 30 Sep 2021 13:42

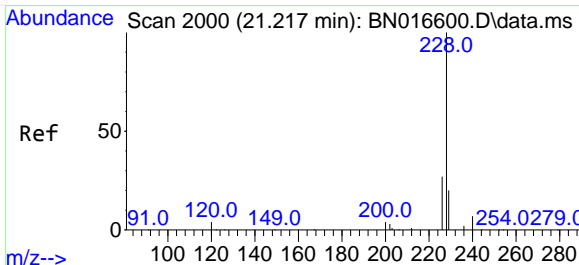
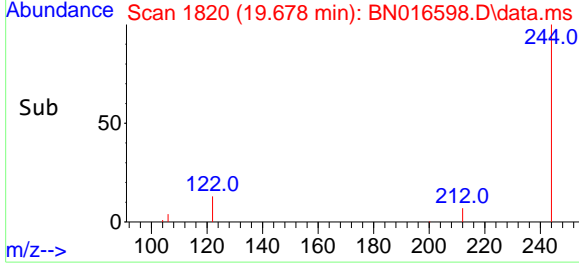
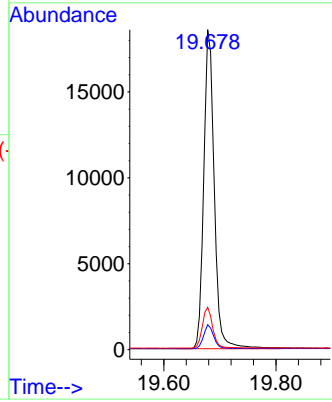
**Instrument :**  
 BNA\_N  
**ClientSampled :**  
 SSTDICC0.1



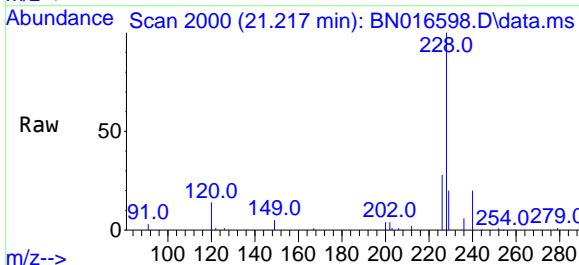
Tgt Ion: 244 Resp: 24097

Ion	Ratio	Lower	Upper
244	100		
212	7.8	6.0	9.0
122	13.2	10.1	15.1

**Manual Integrations**  
**APPROVED**  
 mohammad  
 10/1/2021 9:17:14 AM

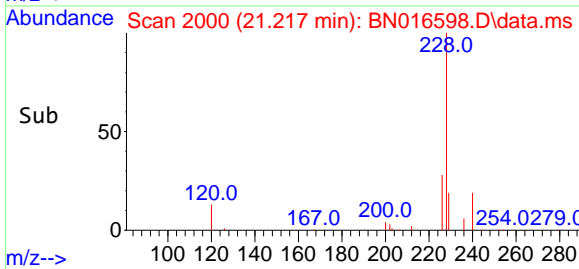
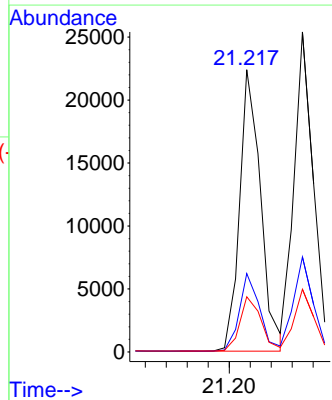


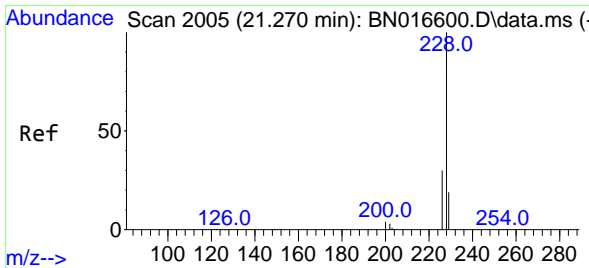
#32  
 Benzo(a)anthracene  
 Concen: 0.10 ng  
 RT: 21.217 min Scan# 2000  
 Delta R.T. 0.000 min  
 Lab File: BN016598.D  
 Acq: 30 Sep 2021 13:42



Tgt Ion: 228 Resp: 30992

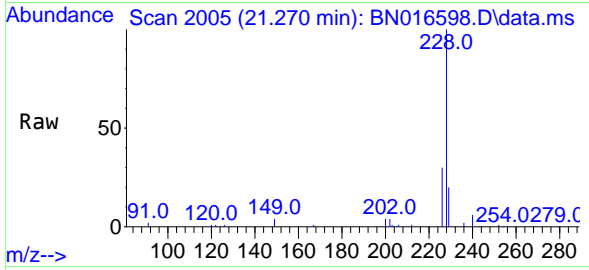
Ion	Ratio	Lower	Upper
228	100		
226	27.8	21.9	32.9
229	19.6	15.7	23.5





#33  
 Chrysene  
 Concen: 0.10 ng  
 RT: 21.270 min Scan# 2005  
 Delta R.T. 0.000 min  
 Lab File: BN016598.D  
 Acq: 30 Sep 2021 13:42

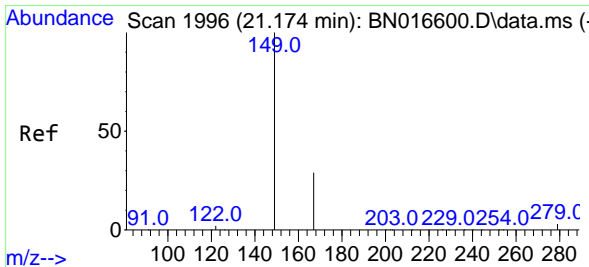
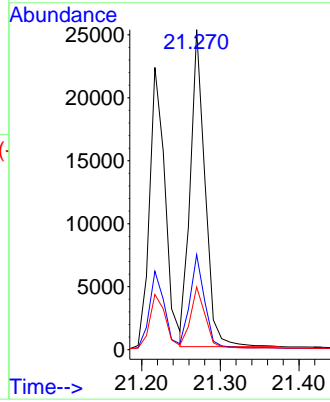
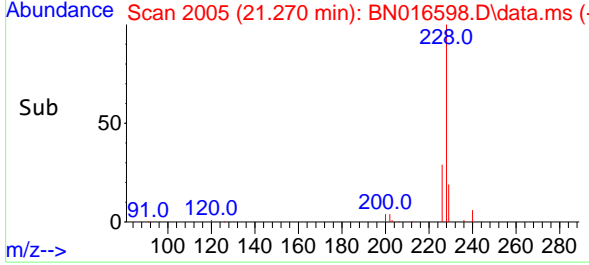
Instrument :  
 BNA\_N  
 ClientSampled :  
 SSTDICC0.1



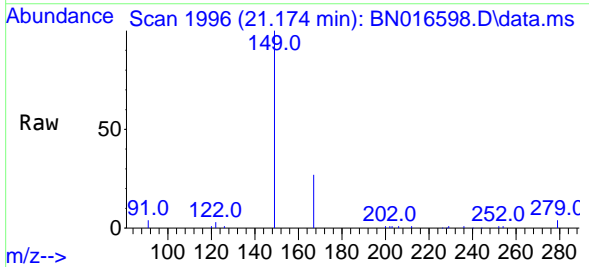
Tgt Ion: 228 Resp: 32759

Ion	Ratio	Lower	Upper
228	100		
226	29.7	23.7	35.5
229	19.6	15.5	23.3

Manual Integrations  
 APPROVED  
 mohammad  
 10/1/2021 9:17:14 AM

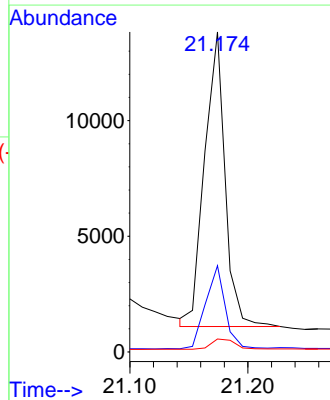
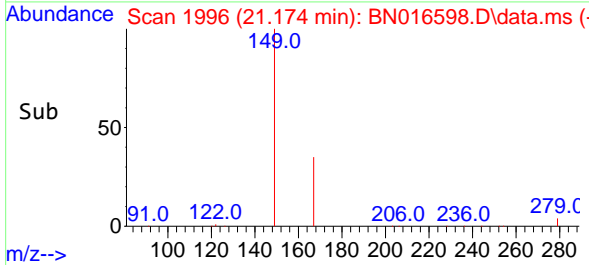


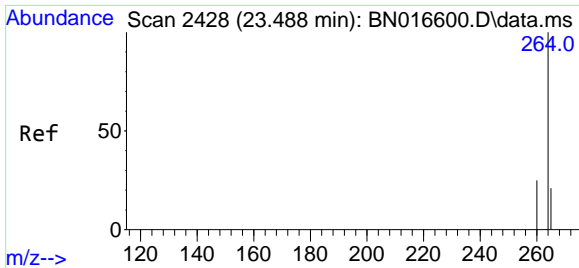
#34  
 Bis(2-ethylhexyl)phthalate  
 Concen: 0.14 ng  
 RT: 21.174 min Scan# 1996  
 Delta R.T. 0.000 min  
 Lab File: BN016598.D  
 Acq: 30 Sep 2021 13:42



Tgt Ion: 149 Resp: 15319

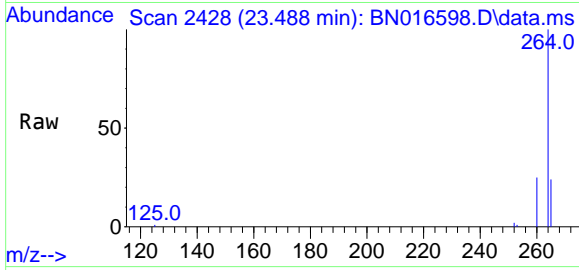
Ion	Ratio	Lower	Upper
149	100		
167	27.1	22.2	33.4
279	4.4	3.2	4.8





#35  
 Perylene-d12  
 Concen: 0.40 ng  
 RT: 23.488 min Scan# 2428  
 Delta R.T. 0.000 min  
 Lab File: BN016598.D  
 Acq: 30 Sep 2021 13:42

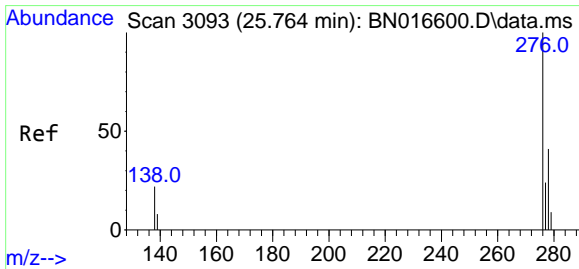
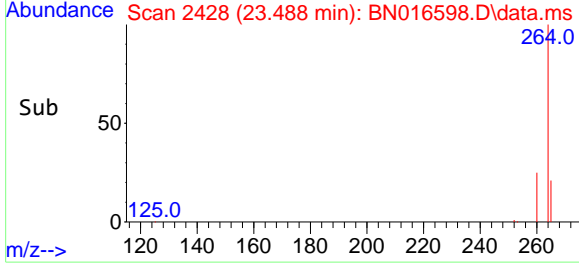
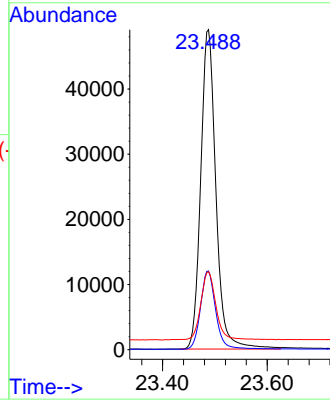
Instrument :  
 BNA\_N  
 ClientSampled :  
 SSTDICC0.1



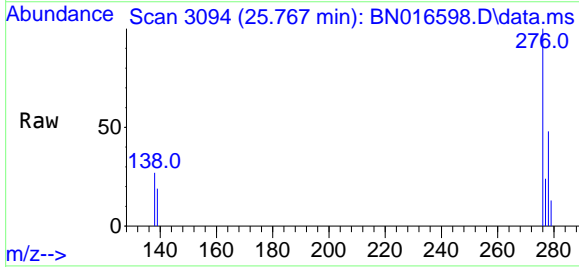
Tgt Ion:264 Resp: 98761  
 Ion Ratio Lower Upper  
 264 100  
 260 24.6 19.9 29.9  
 265 24.4 19.2 28.8

Manual Integrations  
 APPROVED

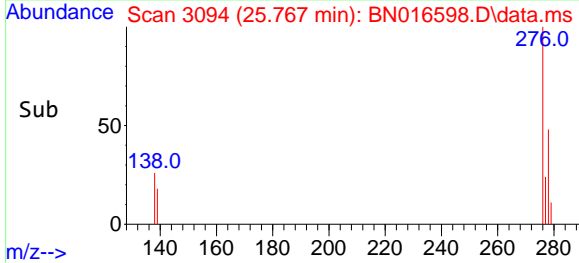
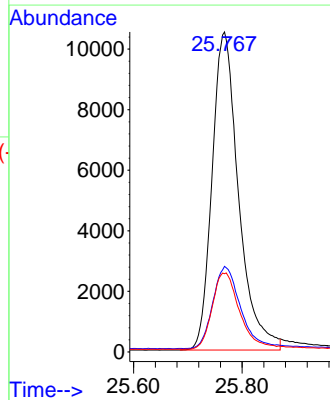
mohammad  
 10/1/2021 9:17:14 AM

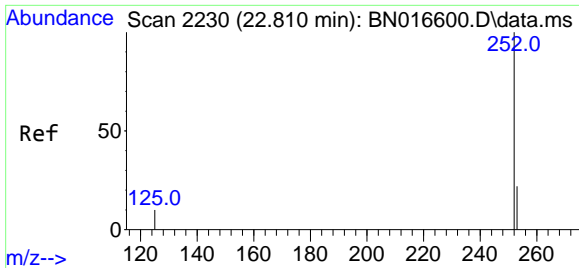


#36  
 Indeno(1,2,3-cd)pyrene  
 Concen: 0.10 ng  
 RT: 25.767 min Scan# 3094  
 Delta R.T. 0.004 min  
 Lab File: BN016598.D  
 Acq: 30 Sep 2021 13:42



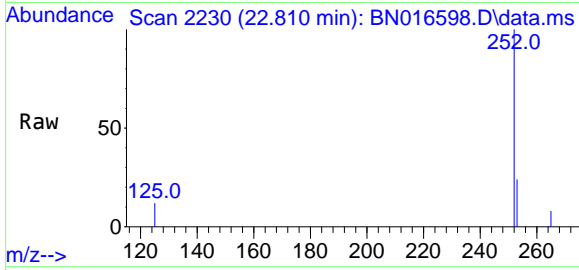
Tgt Ion:276 Resp: 35673  
 Ion Ratio Lower Upper  
 276 100  
 138 27.1 19.5 29.3  
 277 25.1 19.9 29.9





#37  
 Benzo(b)fluoranthene  
 Concen: 0.10 ng  
 RT: 22.810 min Scan# 2230  
 Delta R.T. 0.000 min  
 Lab File: BN016598.D  
 Acq: 30 Sep 2021 13:42

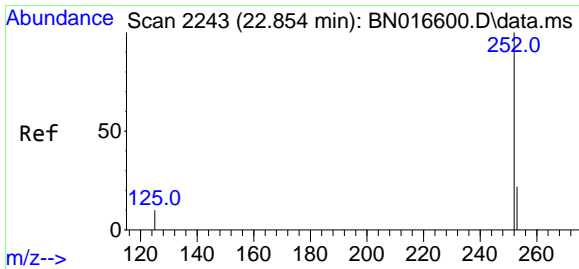
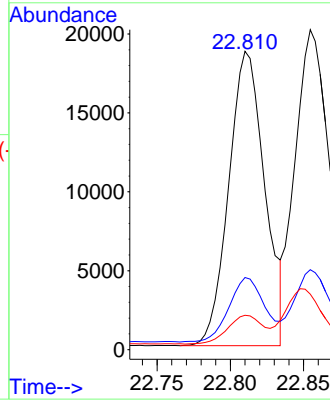
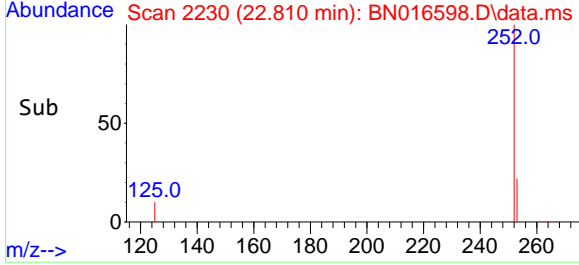
Instrument :  
 BNA\_N  
 ClientSampled :  
 SSTDICC0.1



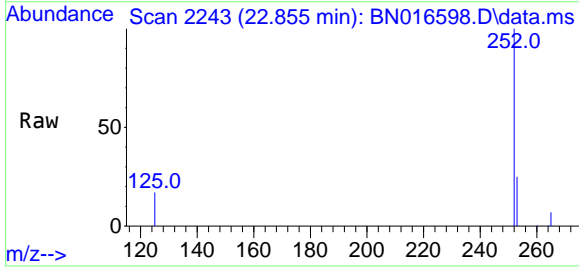
Tgt Ion:252 Resp: 31892  
 Ion Ratio Lower Upper  
 252 100  
 253 24.2 17.8 26.8  
 125 11.5 8.0 12.0

Manual Integrations  
 APPROVED

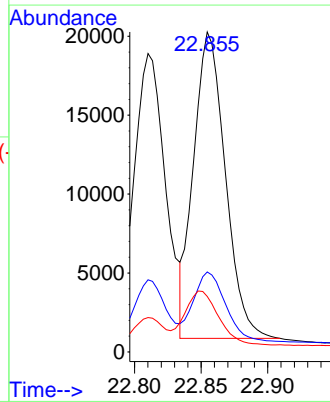
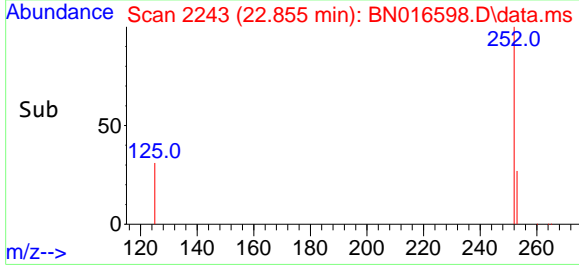
mohammad  
 10/1/2021 9:17:14 AM

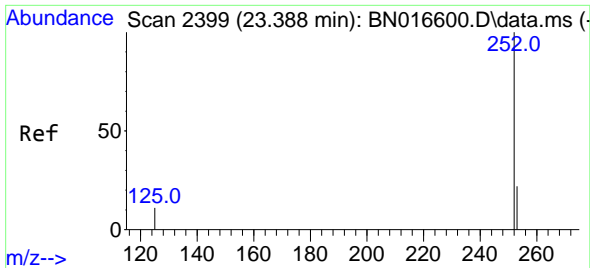


#38  
 Benzo(k)fluoranthene  
 Concen: 0.10 ng  
 RT: 22.855 min Scan# 2243  
 Delta R.T. 0.000 min  
 Lab File: BN016598.D  
 Acq: 30 Sep 2021 13:42



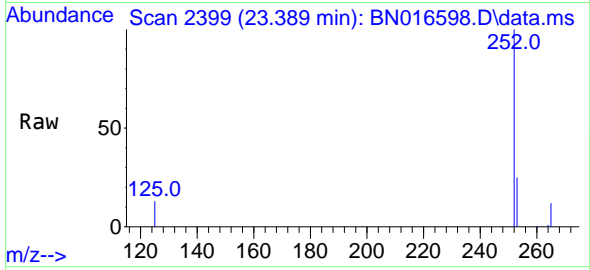
Tgt Ion:252 Resp: 32153  
 Ion Ratio Lower Upper  
 252 100  
 253 25.0 17.8 26.6  
 125 17.4 8.0 12.0#





#39  
 Benzo(a)pyrene  
 Concen: 0.10 ng  
 RT: 23.389 min Scan# 2399  
 Delta R.T. 0.000 min  
 Lab File: BN016598.D  
 Acq: 30 Sep 2021 13:42

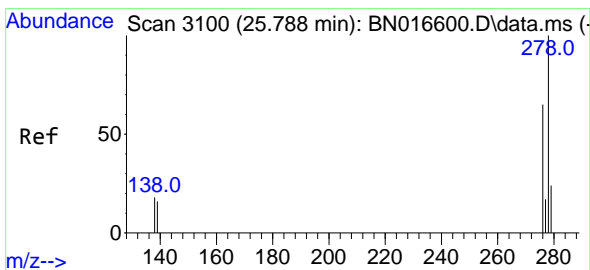
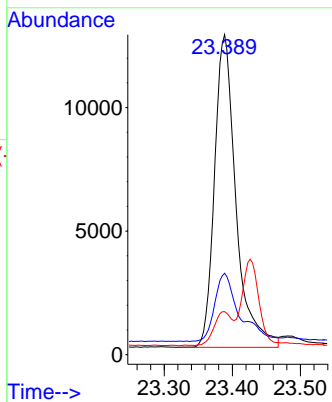
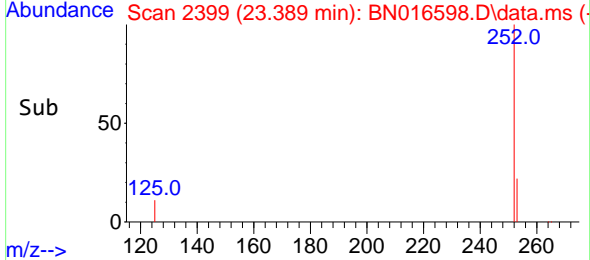
Instrument :  
 BNA\_N  
 ClientSampled :  
 SSTDICC0.1



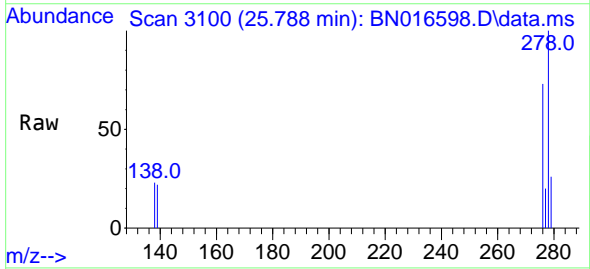
Tgt Ion:252 Resp: 27705  
 Ion Ratio Lower Upper  
 252 100  
 253 25.4 17.8 26.8  
 125 13.5 9.0 13.4#

Manual Integrations  
 APPROVED

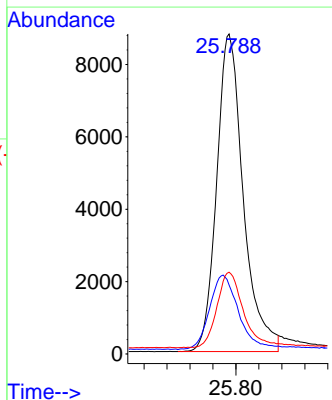
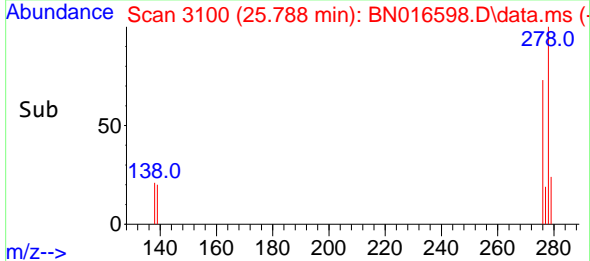
mohammad  
 10/1/2021 9:17:14 AM

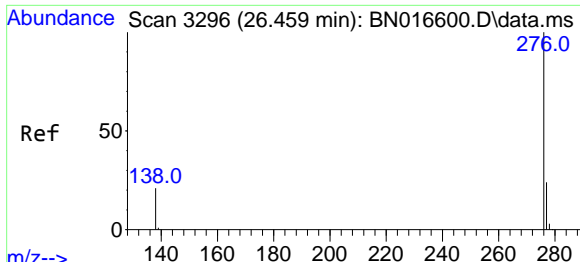


#40  
 Dibenzo(a,h)anthracene  
 Concen: 0.10 ng  
 RT: 25.788 min Scan# 3100  
 Delta R.T. 0.000 min  
 Lab File: BN016598.D  
 Acq: 30 Sep 2021 13:42



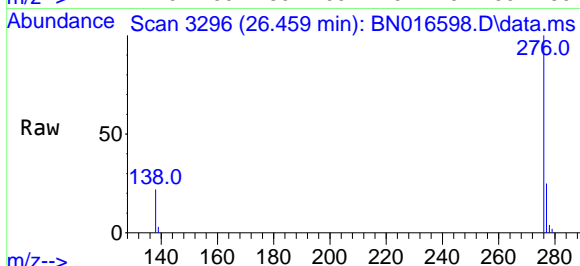
Tgt Ion:278 Resp: 28276  
 Ion Ratio Lower Upper  
 278 100  
 139 21.6 13.1 19.7#  
 279 25.6 19.1 28.7





#41  
 Benzo(g,h,i)perylene  
 Concen: 0.10 ng  
 RT: 26.459 min Scan# 3296  
 Delta R.T. 0.000 min  
 Lab File: BN016598.D  
 Acq: 30 Sep 2021 13:42

**Instrument :**  
 BNA\_N  
**ClientSampled :**  
 SSTDICC0.1



Tgt Ion: 276 Resp: 31941

Ion	Ratio	Lower	Upper
276	100		
277	24.7	19.0	28.6
138	22.3	16.9	25.3

**Manual Integrations**  
**APPROVED**  
 mohammad  
 10/1/2021 9:17:14 AM

