

Data Path : Z:\svoasrv\HPCHEM1\BNA_N\Data\BN100121\
 Data File : BN016673.D
 Acq On : 02 Oct 2021 16:33
 Operator : CG/JU
 Sample : PB139306BS
 Misc :
 ALS Vial : 41 Sample Multiplier: 1

Instrument :
 BNA_N
 ClientSampleId :
 PB139306BS

Integration Parameters: rteint.p
 Integrator: RTE
 Smoothing : OFF Filtering: 5
 Sampling : 1 Min Area: 1 % of largest Peak
 Start Thrs: 0.2 Max Peaks: 100
 Stop Thrs : 0 Peak Location: TOP

If leading or trailing edge < 100 prefer < Baseline drop else tangent >
 Peak separation: 5

Method : Z:\SVOASRV\HPCHEM1\BNA_N\METHODS\8270-SIM-BN100121.M
 Title : ASP BNA STANDARDS FOR 5 POINT CALIBRATION

Signal : TIC: BN016673.D\data.ms

peak #	R.T. min	first scan	max scan	last scan	PK TY	peak height	corr. area	corr. % max.	% of total
1	3.244	16	18	20	rBV	7720	10987	2.01%	0.124%
2	3.281	20	22	51	rVB	6126	31151	5.70%	0.353%
3	3.594	51	56	79	rVB	7163	33593	6.15%	0.380%
4	5.263	231	237	257	rVB	16062	62770	11.48%	0.710%
5	6.822	401	406	418	rBV	26691	68575	12.55%	0.776%
6	6.978	418	423	429	rVV	19356	42405	7.76%	0.480%
7	7.080	429	434	440	rVV	40375	83691	15.31%	0.947%
8	7.200	440	447	469	rVB	13969	37940	6.94%	0.429%
9	7.522	478	482	489	rVB	7814	17057	3.12%	0.193%
10	7.642	490	495	512	rVB2	55277	136704	25.01%	1.547%
11	7.956	524	529	538	rVB2	53940	122643	22.44%	1.388%
12	8.168	547	552	557	rBV	3583	8848	1.62%	0.100%
13	8.429	571	577	591	rBV3	24291	56644	10.36%	0.641%
14	8.696	594	598	601	rBV	5602	10467	1.91%	0.118%
15	8.784	601	605	606	rBV	37004	70631	12.92%	0.799%
16	8.822	606	608	616	rVB	31040	57520	10.52%	0.651%
17	9.342	645	649	652	rBV	53310	88184	16.13%	0.998%
18	9.519	660	663	666	rBV	3489	6911	1.26%	0.078%
19	9.595	666	669	678	rVB	9658	17492	3.20%	0.198%
20	9.836	685	688	702	rVV	18246	31821	5.82%	0.360%
21	10.052	702	705	719	rVB	4603	10300	1.88%	0.117%
22	10.407	729	733	735	rBV	121400	220744	40.38%	2.498%
23	10.457	735	737	741	rVV	122312	201053	36.78%	2.275%
24	10.571	743	746	756	rVV	32005	69368	12.69%	0.785%
25	10.749	756	760	763	rVB	37717	63842	11.68%	0.723%
26	11.306	801	804	811	rBV	2379	5501	1.01%	0.062%
27	11.709	852	865	894	rBV	15252	28755	5.26%	0.325%
28	12.003	921	931	940	rBV	65264	106044	19.40%	1.200%
29	12.078	940	948	973	rVV	143175	235124	43.01%	2.661%
30	12.296	987	997	1019	rVV	142331	226673	41.47%	2.565%
31	12.695	1056	1059	1062	rBV	18872	29580	5.41%	0.335%
32	12.759	1062	1064	1071	rVB	14107	28014	5.12%	0.317%
33	12.886	1071	1074	1078	rBV	133046	223386	40.87%	2.528%
34	13.139	1090	1094	1097	rBV	87553	146698	26.84%	1.660%
35	13.736	1138	1141	1143	rBV	13781	19502	3.57%	0.221%
36	13.850	1147	1150	1153	rVB	22143	31802	5.82%	0.360%

Data Path : Z:\svoasrv\HPCHEM1\BNA_N\Data\BN100121\
 Data File : BN016673.D
 Acq On : 02 Oct 2021 16:33
 Operator : CG/JU
 Sample : PB139306BS
 Misc :
 ALS Vial : 41 Sample Multiplier: 1

Instrument :
 BNA_N
 ClientSampleID :
 PB139306BS

Integration Parameters: rteint.p
 Integrator: RTE
 Smoothing : OFF Filtering: 5
 Sampling : 1 Min Area: 1 % of largest Peak
 Start Thrs: 0.2 Max Peaks: 100
 Stop Thrs : 0 Peak Location: TOP

If leading or trailing edge < 100 prefer < Baseline drop else tangent >
 Peak separation: 5

Method : Z:\SVOASRV\HPCHEM1\BNA_N\METHODS\8270-SIM-BN100121.M
 Title : ASP BNA STANDARDS FOR 5 POINT CALIBRATION

37	13.939	1155	1157	1158	rBV	6097	9756	1.78%	0.110%
38	13.990	1158	1161	1164	rVB	107304	174948	32.00%	1.980%
39	14.269	1180	1183	1185	rBV	156886	223664	40.92%	2.531%
40	14.332	1185	1188	1191	rVB	191710	276095	50.51%	3.125%
41	14.637	1209	1212	1220	rBV3	18725	49272	9.01%	0.558%
42	14.814	1224	1226	1230	rBV	6028	10495	1.92%	0.119%
43	14.903	1230	1233	1236	rBV	8328	12513	2.29%	0.142%
44	15.106	1246	1249	1252	rBV	9908	12730	2.33%	0.144%
45	15.322	1263	1266	1270	rBV2	259401	398904	72.97%	4.515%
46	15.411	1270	1273	1280	rVV2	3320	8916	1.63%	0.101%
47	15.537	1280	1283	1287	rVV	42998	71819	13.14%	0.813%
48	15.614	1287	1289	1298	rVV2	47592	73517	13.45%	0.832%
49	15.766	1298	1301	1311	rVB2	15240	25233	4.62%	0.286%
50	16.226	1334	1338	1341	rBV2	65825	103942	19.01%	1.176%
51	16.324	1343	1346	1350	rVB	53945	82737	15.14%	0.936%
52	16.494	1358	1360	1372	rBV	23144	38710	7.08%	0.438%
53	16.677	1372	1375	1384	rBV	21413	38103	6.97%	0.431%
54	17.017	1400	1403	1405	rBV	112244	183710	33.61%	2.079%
55	17.066	1405	1407	1410	rVV	170679	246867	45.16%	2.794%
56	17.151	1411	1414	1434	rVV	127350	211037	38.61%	2.388%
57	17.431	1434	1437	1452	rVV	99475	156966	28.72%	1.776%
58	18.015	1482	1485	1505	rVB7	6267	8451	1.55%	0.096%
59	19.068	1685	1697	1699	rBV	135532	185078	33.86%	2.095%
60	19.093	1699	1702	1742	rVB	212983	299046	54.71%	3.384%
61	19.460	1767	1776	1813	rBV	214907	294387	53.85%	3.332%
62	19.678	1813	1820	1855	rVB	128458	161902	29.62%	1.832%
63	20.378	1918	1921	1924	rBV	54150	67293	12.31%	0.762%
64	21.174	1993	1996	1998	rBV	55974	74118	13.56%	0.839%
65	21.227	1998	2001	2003	rVV2	233017	465789	85.21%	5.271%
66	21.270	2003	2005	2017	rVB	233796	319170	58.39%	3.612%
67	22.056	2076	2079	2082	rBV	82328	101314	18.53%	1.147%
68	22.810	2217	2230	2236	rBV	143597	238166	43.57%	2.695%
69	22.855	2236	2243	2293	rVB	153637	285537	52.24%	3.232%
70	23.389	2385	2399	2416	rBV	95951	214022	39.15%	2.422%
71	23.488	2417	2428	2485	rVB	110851	240631	44.02%	2.723%
72	24.090	2594	2604	2625	rBV	6929	13740	2.51%	0.155%
73	24.860	2817	2829	2845	rBV	7005	16088	2.94%	0.182%
74	25.774	3070	3096	3202	rBV3	133803	546632	100.00%	6.186%
75	26.459	3274	3296	3361	rBV	74256	252322	46.16%	2.856%

Data Path : Z:\svoasrv\HPCHEM1\BNA_N\Data\BN100121\
Data File : BN016673.D
Acq On : 02 Oct 2021 16:33
Operator : CG/JU
Sample : PB139306BS
Misc :
ALS Vial : 41 Sample Multiplier: 1

Instrument :
BNA_N
ClientSampleId :
PB139306BS

Integration Parameters: rteint.p
Integrator: RTE
Smoothing : OFF Filtering: 5
Sampling : 1 Min Area: 1 % of largest Peak
Start Thrs: 0.2 Max Peaks: 100
Stop Thrs : 0 Peak Location: TOP

If leading or trailing edge < 100 prefer < Baseline drop else tangent >
Peak separation: 5

Method : Z:\SVOASRV\HPCHEM1\BNA_N\METHODS\8270-SIM-BN100121.M
Title : ASP BNA STANDARDS FOR 5 POINT CALIBRATION

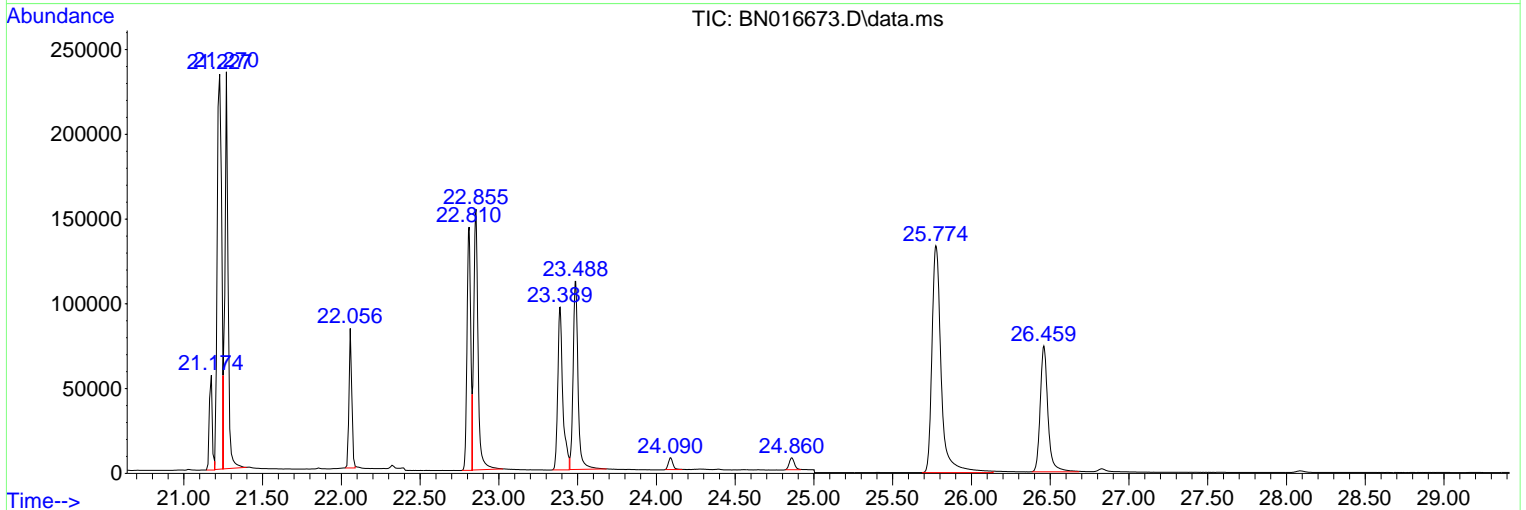
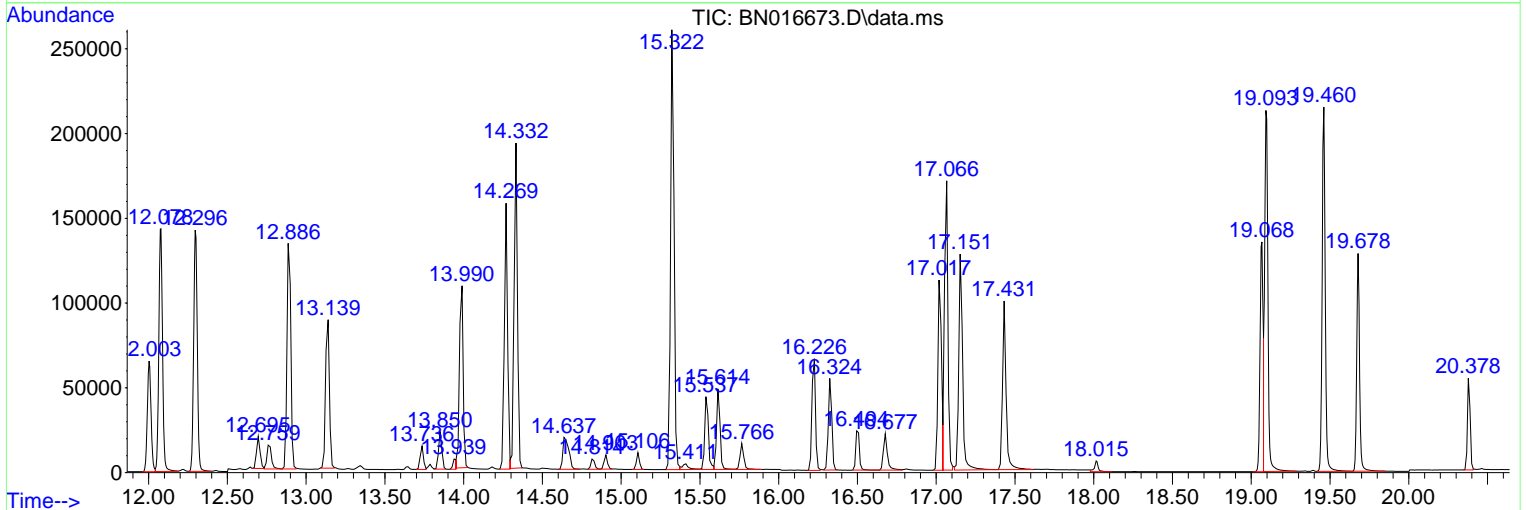
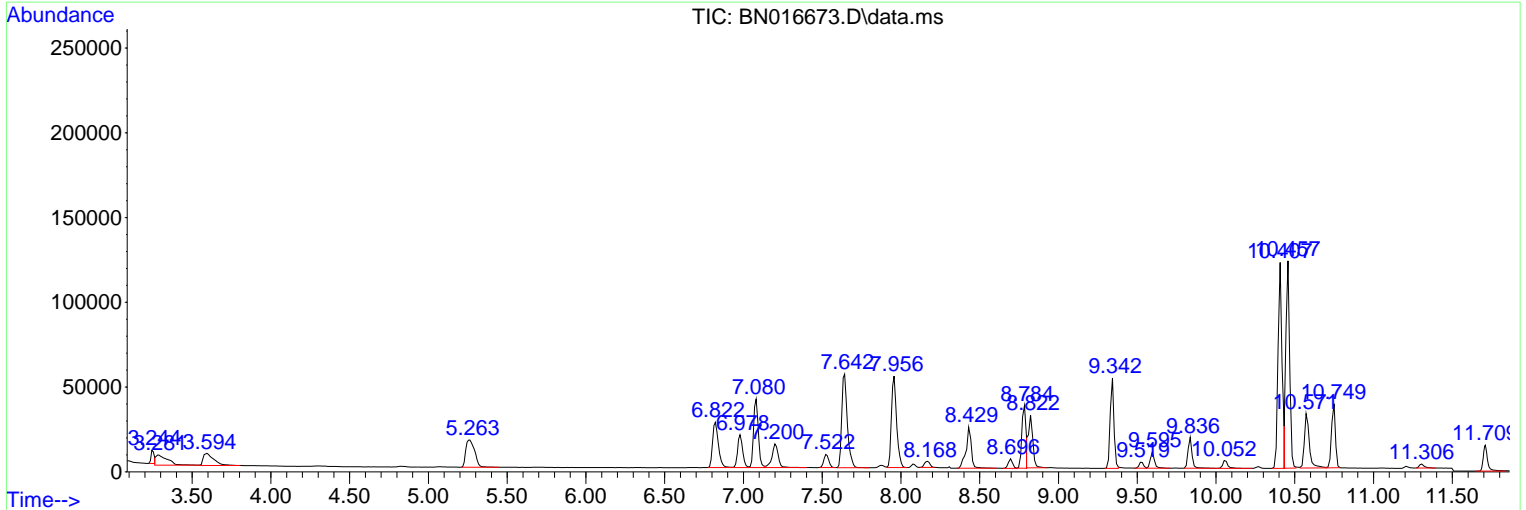
Sum of corrected areas: 8836040

Data Path : Z:\svoasrv\HPCHEM1\BNA_N\Data\BN100121\
 Data File : BN016673.D
 Acq On : 02 Oct 2021 16:33
 Operator : CG/JU
 Sample : PB139306BS
 Misc :
 ALS Vial : 41 Sample Multiplier: 1

Instrument :
 BNA_N
 ClientSampled :
 PB139306BS

Quant Method : Z:\SVOASRV\HPCHEM1\BNA_N\METHODS\8270-SIM-BN100121.M
 Quant Title : ASP BNA STANDARDS FOR 5 POINT CALIBRATION

TIC Library : C:\Database\NIST20.L
 TIC Integration Parameters: LSCINT.P



Data Path : Z:\svoasrv\HPCHEM1\BNA_N\Data\BN100121\
 Data File : BN016673.D
 Acq On : 02 Oct 2021 16:33
 Operator : CG/JU
 Sample : PB139306BS
 Misc :
 ALS Vial : 41 Sample Multiplier: 1

Instrument :
 BNA_N
 ClientSampleId :
 PB139306BS

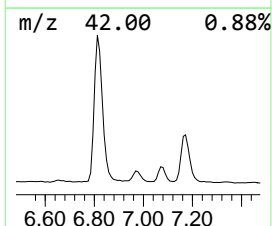
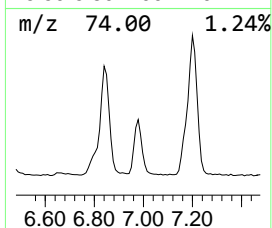
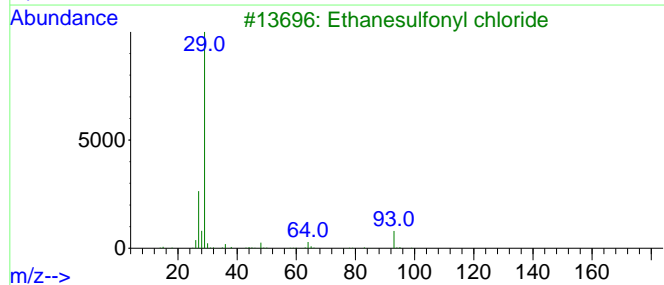
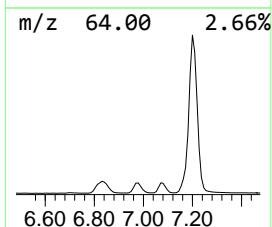
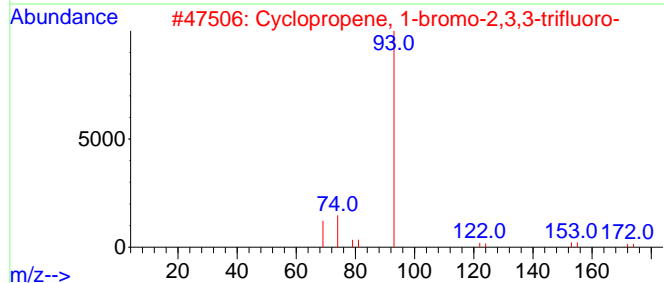
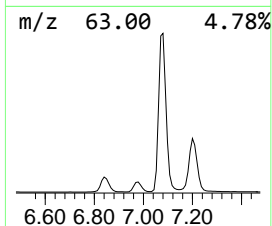
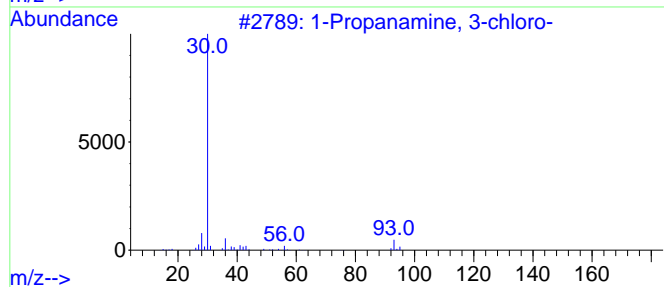
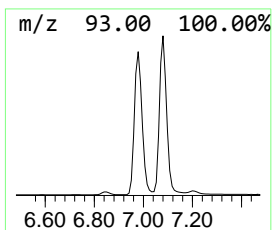
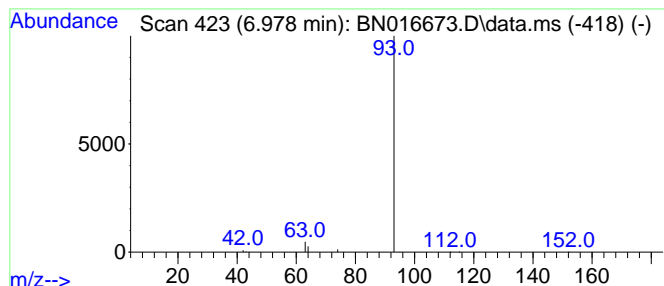
Quant Method : Z:\SVOASRV\HPCHEM1\BNA_N\METHODS\8270-SIM-BN100121.M
 Quant Title : ASP BNA STANDARDS FOR 5 POINT CALIBRATION

TIC Library : C:\Database\NIST20.L
 TIC Integration Parameters: LSCINT.P

 Peak Number 1 1-Propanamine, 3-chloro- Concentration Rank 10

R.T.	EstConc	Area	Relative to ISTD	R.T.
6.978	0.12 ng	42405	1,4-Dichlorobenzene-d4	7.642

Hit#	of 5	Tentative ID	MW	MolForm	CAS#	Qual
1		1-Propanamine, 3-chloro-	93	C3H8ClN	014753-26-5	1
2		Cyclopropene, 1-bromo-2,3,3-trif...	172	C3BrF3	029777-44-4	1
3		Ethanesulfonyl chloride	128	C2H5ClO2S	000594-44-5	1
4		Carbonochloridic acid, ethyl ester	108	C3H5ClO2	000541-41-3	1
5		Ethanesulfonyl chloride	126	C2H3ClO2S	006608-47-5	1



Data Path : Z:\svoasrv\HPCHEM1\BNA_N\Data\BN100121\
 Data File : BN016673.D
 Acq On : 02 Oct 2021 16:33
 Operator : CG/JU
 Sample : PB139306BS
 Misc :
 ALS Vial : 41 Sample Multiplier: 1

Instrument :
 BNA_N
 ClientSampleId :
 PB139306BS

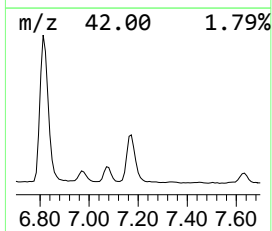
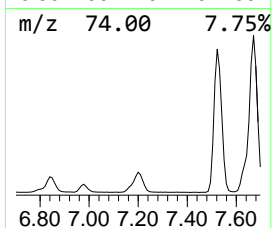
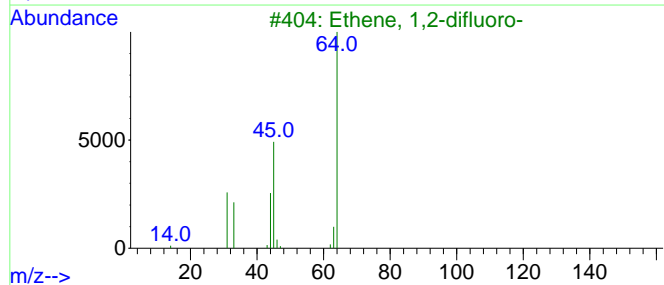
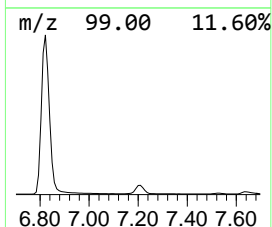
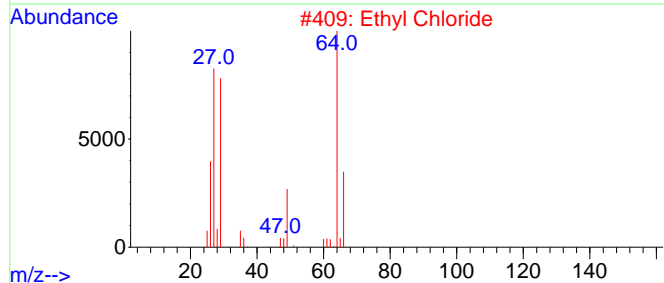
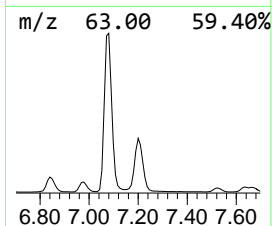
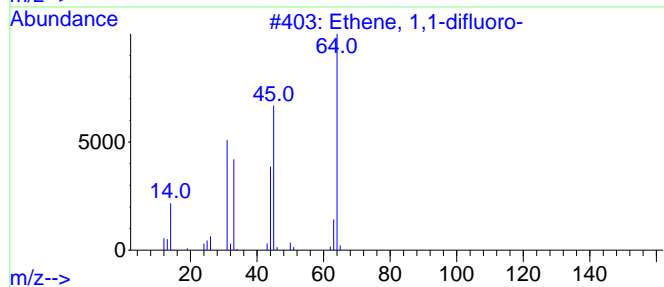
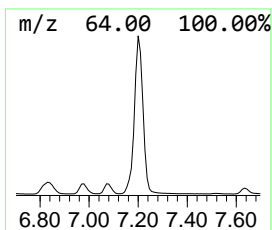
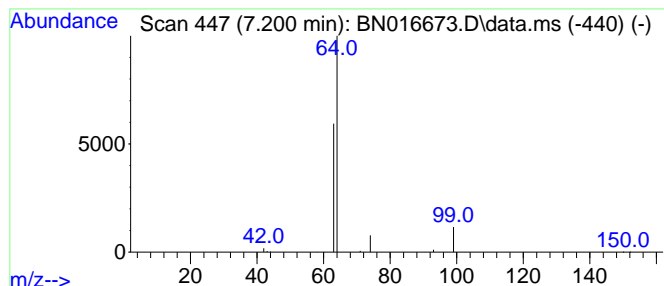
Quant Method : Z:\SVOASRV\HPCHEM1\BNA_N\METHODS\8270-SIM-BN100121.M
 Quant Title : ASP BNA STANDARDS FOR 5 POINT CALIBRATION

TIC Library : C:\Database\NIST20.L
 TIC Integration Parameters: LSCINT.P

 Peak Number 2 Ethene, 1,1-difluoro- Concentration Rank 11

R.T.	EstConc	Area	Relative to ISTD	R.T.
7.200	0.11 ng	37940	1,4-Dichlorobenzene-d4	7.642

Hit#	of 5	Tentative ID	MW	MolForm	CAS#	Qual
1		Ethene, 1,1-difluoro-	64	C2H2F2	000075-38-7	3
2		Ethyl Chloride	64	C2H5Cl	000075-00-3	3
3		Ethene, 1,2-difluoro-	64	C2H2F2	001691-13-0	3
4		Sulfur dioxide	64	O2S	007446-09-5	3
5		(S)-(-)-2-Chloropropionic acid	108	C3H5ClO2	029617-66-1	2



Data Path : Z:\svoasrv\HPCHEM1\BNA_N\Data\BN100121\
 Data File : BN016673.D
 Acq On : 02 Oct 2021 16:33
 Operator : CG/JU
 Sample : PB139306BS
 Misc :
 ALS Vial : 41 Sample Multiplier: 1

Instrument :
 BNA_N
 ClientSampleID :
 PB139306BS

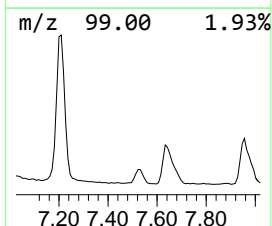
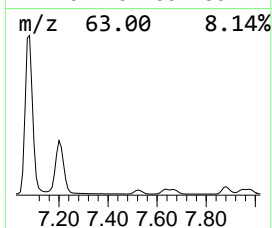
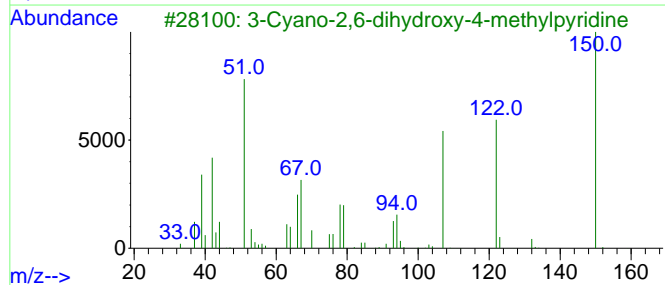
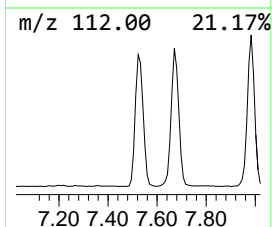
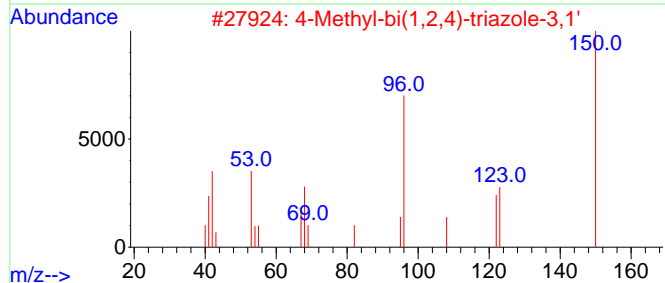
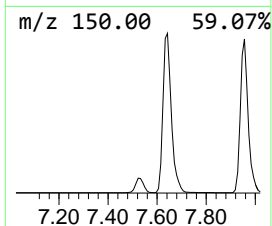
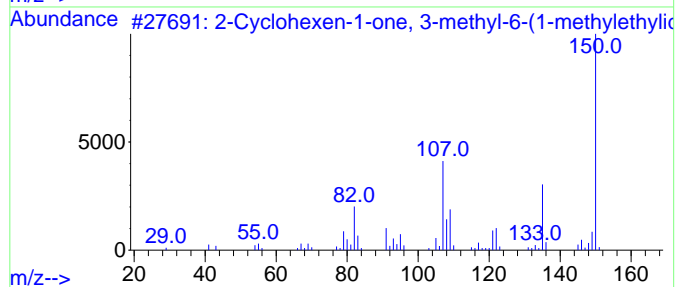
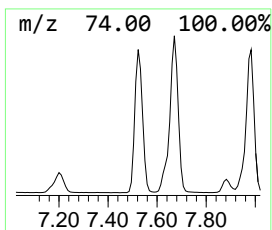
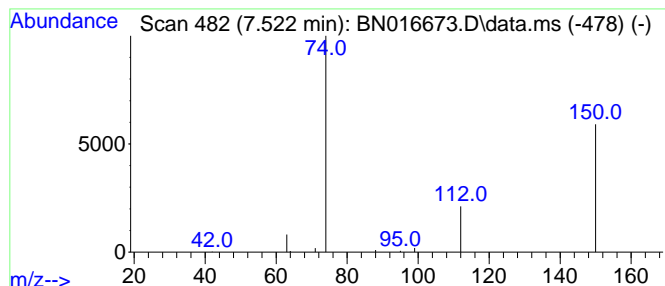
Quant Method : Z:\SVOASRV\HPCHEM1\BNA_N\METHODS\8270-SIM-BN100121.M
 Quant Title : ASP BNA STANDARDS FOR 5 POINT CALIBRATION

TIC Library : C:\Database\NIST20.L
 TIC Integration Parameters: LSCINT.P

 Peak Number 3 2-Cyclohexen-1-one, 3-methyl-... Concentration Rank 20

R.T.	EstConc	Area	Relative to ISTD	R.T.
7.522	0.05 ng	17057	1,4-Dichlorobenzene-d4	7.642

Hit#	of	5	Tentative ID	MW	MolForm	CAS#	Qual
1			2-Cyclohexen-1-one, 3-methyl-6-(...)	150	C10H14O	000491-09-8	2
2			4-Methyl-bi(1,2,4)-triazole-3,1'	150	C5H6N6	063523-89-7	2
3			3-Cyano-2,6-dihydroxy-4-methylpy...	150	C7H6N2O2	005444-02-0	2
4			3-Methylpyrazolo[4,3-d]pyrimidin...	150	C6H6N4O	005399-94-0	2
5			N-Nitrosodimethylamine	74	C2H6N2O	000062-75-9	2



Data Path : Z:\svoasrv\HPCHEM1\BNA_N\Data\BN100121\
 Data File : BN016673.D
 Acq On : 02 Oct 2021 16:33
 Operator : CG/JU
 Sample : PB139306BS
 Misc :
 ALS Vial : 41 Sample Multiplier: 1

Instrument :
 BNA_N
 ClientSampleID :
 PB139306BS

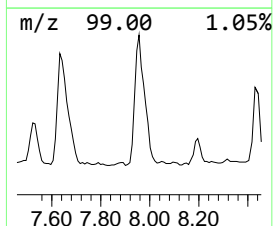
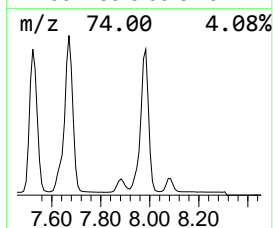
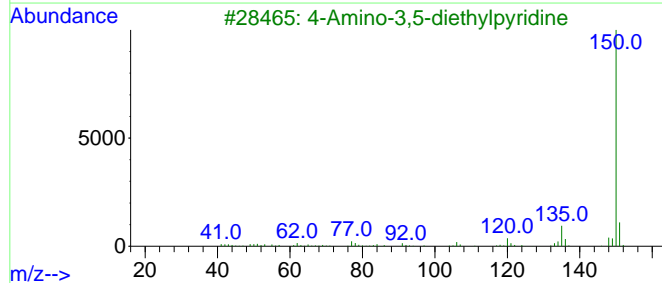
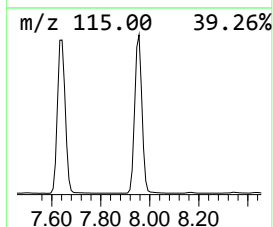
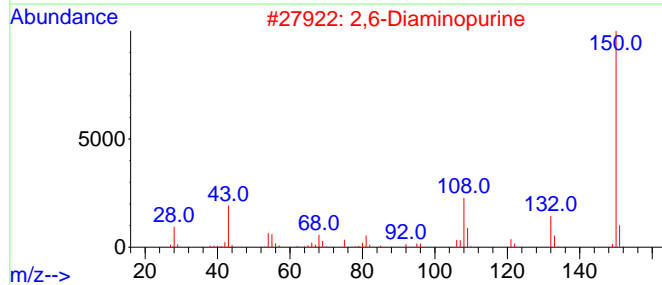
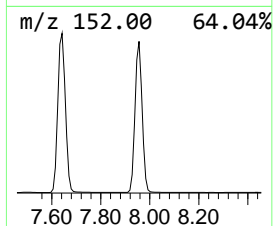
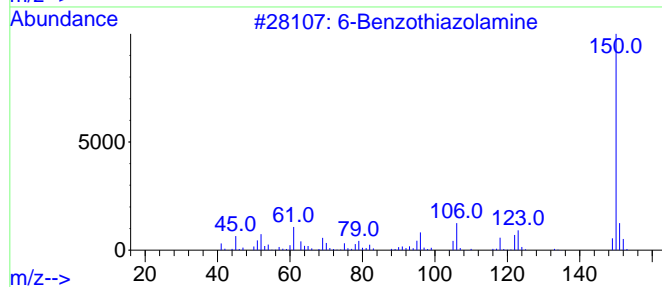
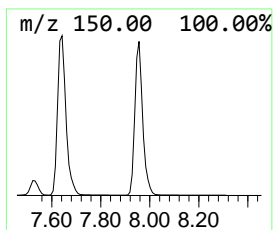
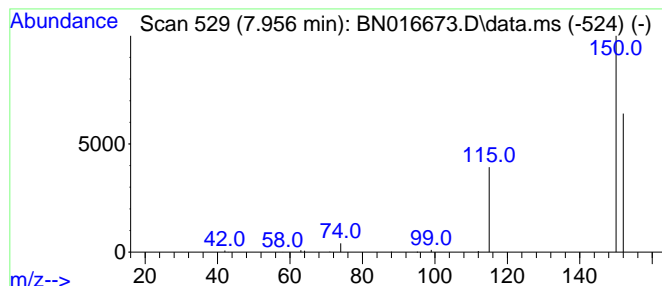
Quant Method : Z:\SVOASRV\HPCHEM1\BNA_N\METHODS\8270-SIM-BN100121.M
 Quant Title : ASP BNA STANDARDS FOR 5 POINT CALIBRATION

TIC Library : C:\Database\NIST20.L
 TIC Integration Parameters: LSCINT.P

 Peak Number 4 6-Benzothiazolamine Concentration Rank 2

R.T.	EstConc	Area	Relative to ISTD	R.T.
7.956	0.36 ng	122643	1,4-Dichlorobenzene-d4	7.642

Hit#	of 5	Tentative ID	MW	MolForm	CAS#	Qual
1		6-Benzothiazolamine	150	C7H6N2S	000533-30-2	4
2		2,6-Diaminopurine	150	C5H6N6	001904-98-9	2
3		4-Amino-3,5-diethylpyridine	150	C9H14N2	1000128-75-1	2
4		Benzene, 1,2,3,4-tetrafluoro-	150	C6H2F4	000551-62-2	2
5		2-Benzimidazolethiol	150	C7H6N2S	000583-39-1	2



Data Path : Z:\svoasrv\HPCHEM1\BNA_N\Data\BN100121\
 Data File : BN016673.D
 Acq On : 02 Oct 2021 16:33
 Operator : CG/JU
 Sample : PB139306BS
 Misc :
 ALS Vial : 41 Sample Multiplier: 1

Instrument :
 BNA_N
 ClientSampleId :
 PB139306BS

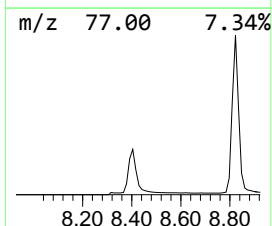
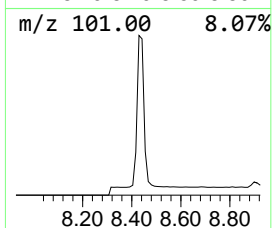
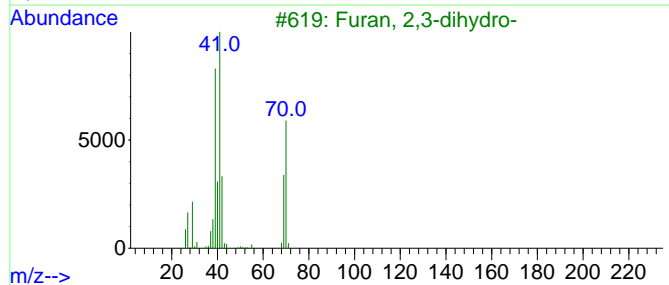
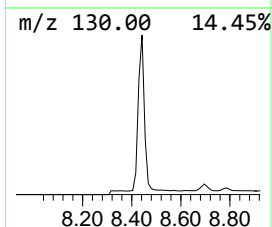
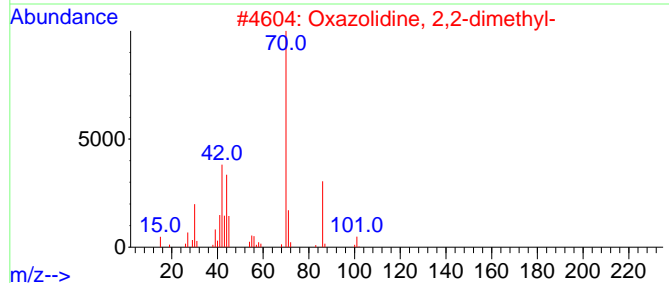
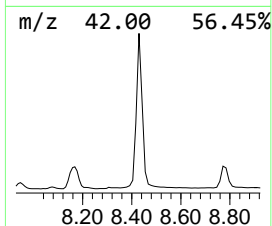
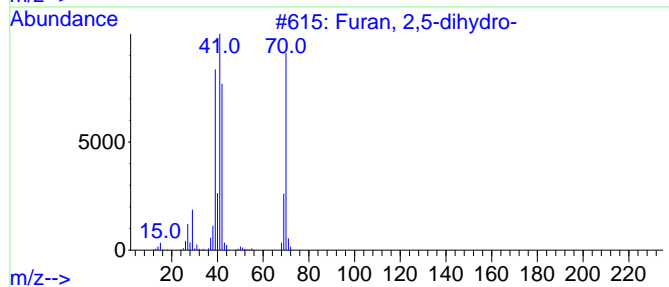
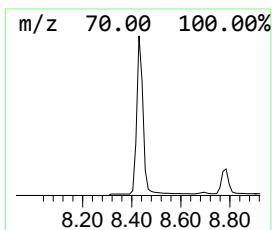
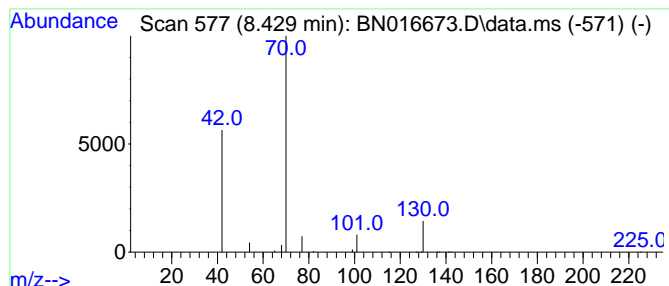
Quant Method : Z:\SVOASRV\HPCHEM1\BNA_N\METHODS\8270-SIM-BN100121.M
 Quant Title : ASP BNA STANDARDS FOR 5 POINT CALIBRATION

TIC Library : C:\Database\NIST20.L
 TIC Integration Parameters: LSCINT.P

 Peak Number 5 Furan, 2,5-dihydro- Concentration Rank 5

R.T.	EstConc	Area	Relative to ISTD	R.T.
8.429	0.17 ng	56644	1,4-Dichlorobenzene-d4	7.642

Hit#	of	5	Tentative ID	MW	MolForm	CAS#	Qual
1			Furan, 2,5-dihydro-	70	C4H6O	001708-29-8	7
2			Oxazolidine, 2,2-dimethyl-	101	C5H11NO	020515-62-2	7
3			Furan, 2,3-dihydro-	70	C4H6O	001191-99-7	5
4			Dimethylketene	70	C4H6O	000598-26-5	5
5			1-Propanamine, N-nitroso-N-propyl-	130	C6H14N2O	000621-64-7	4



Data Path : Z:\svoasrv\HPCHEM1\BNA_N\Data\BN100121\
 Data File : BN016673.D
 Acq On : 02 Oct 2021 16:33
 Operator : CG/JU
 Sample : PB139306BS
 Misc :
 ALS Vial : 41 Sample Multiplier: 1

Instrument :
 BNA_N
 ClientSampleId :
 PB139306BS

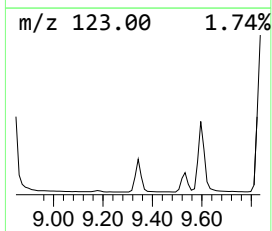
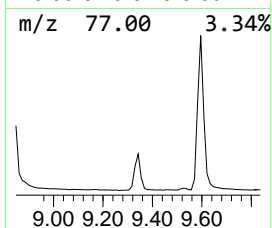
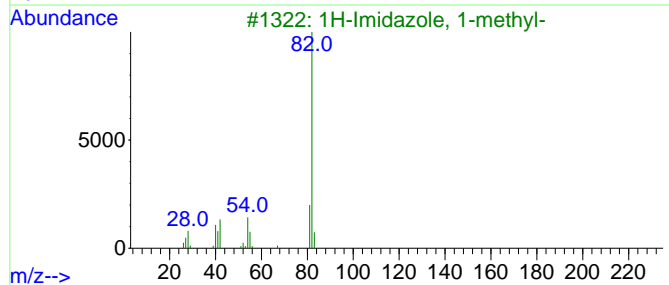
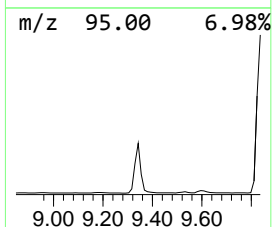
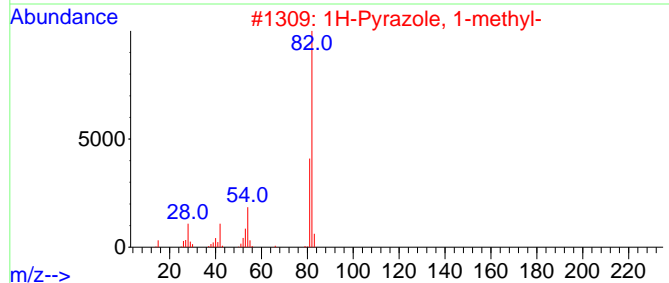
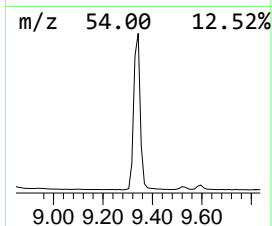
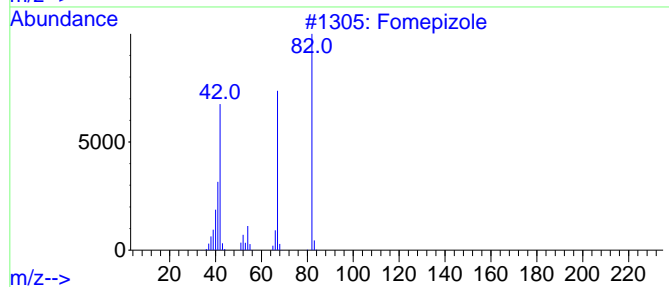
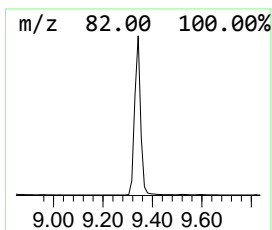
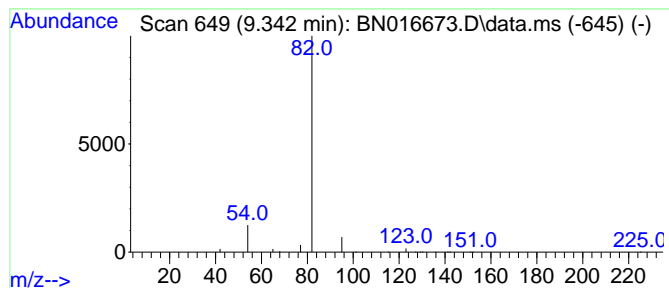
Quant Method : Z:\SVOASRV\HPCHEM1\BNA_N\METHODS\8270-SIM-BN100121.M
 Quant Title : ASP BNA STANDARDS FOR 5 POINT CALIBRATION

TIC Library : C:\Database\NIST20.L
 TIC Integration Parameters: LSCINT.P

 Peak Number 6 Fomepizole Concentration Rank 6

R.T.	EstConc	Area	Relative to ISTD	R.T.
9.342	0.16 ng	88184	Naphthalene-d8	10.406

Hit#	of	5	Tentative ID	MW	MolForm	CAS#	Qual
1			Fomepizole	82	C4H6N2	007554-65-6	5
2			1H-Pyrazole, 1-methyl-	82	C4H6N2	000930-36-9	4
3			1H-Imidazole, 1-methyl-	82	C4H6N2	000616-47-7	4
4			Furan, 3-methyl-	82	C5H6O	000930-27-8	4
5			Furan, 2-methyl-	82	C5H6O	000534-22-5	4



Data Path : Z:\svoasrv\HPCHEM1\BNA_N\Data\BN100121\
 Data File : BN016673.D
 Acq On : 02 Oct 2021 16:33
 Operator : CG/JU
 Sample : PB139306BS
 Misc :
 ALS Vial : 41 Sample Multiplier: 1

Instrument :
 BNA_N
 ClientSampleId :
 PB139306BS

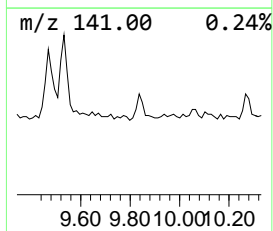
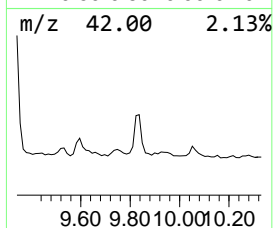
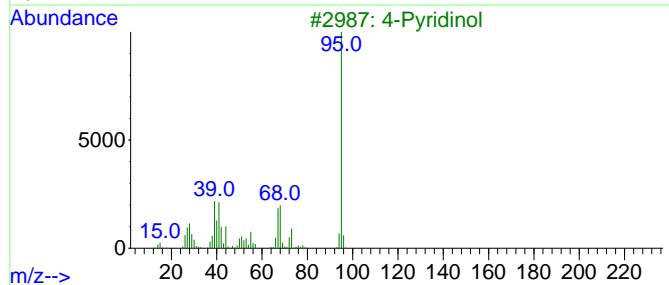
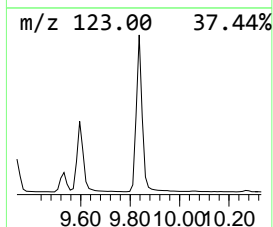
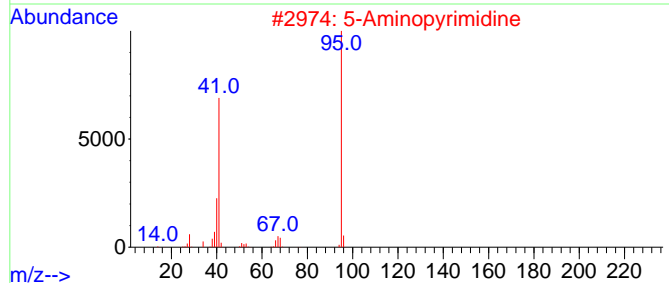
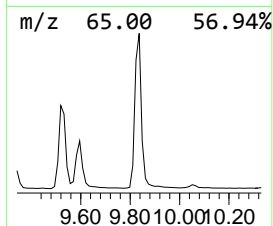
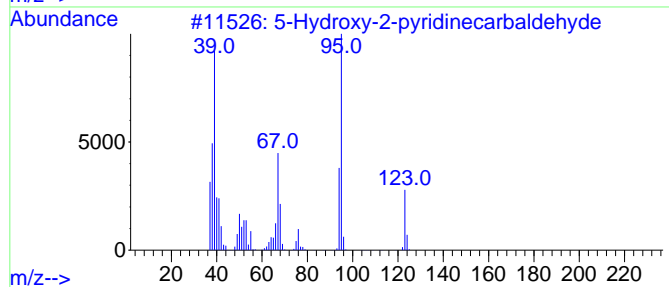
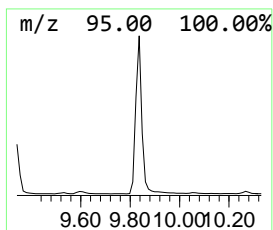
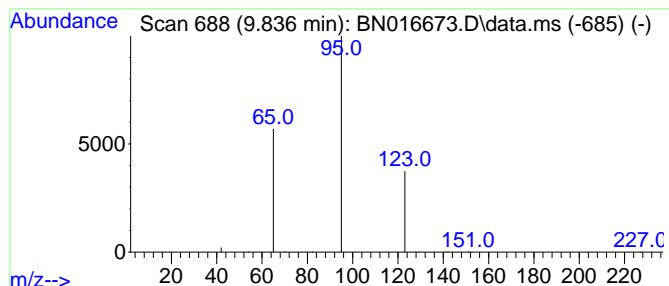
Quant Method : Z:\SVOASRV\HPCHEM1\BNA_N\METHODS\8270-SIM-BN100121.M
 Quant Title : ASP BNA STANDARDS FOR 5 POINT CALIBRATION

TIC Library : C:\Database\NIST20.L
 TIC Integration Parameters: LSCINT.P

 Peak Number 7 5-Hydroxy-2-pyridinecarbal... Concentration Rank 15

R.T.	EstConc	Area	Relative to ISTD	R.T.
9.836	0.06 ng	31821	Naphthalene-d8	10.406

Hit#	of 5	Tentative ID	MW	MolForm	CAS#	Qual
1		5-Hydroxy-2-pyridinecarbaldehyde	123	C6H5NO2	031191-08-9	5
2		5-Aminopyrimidine	95	C4H5N3	000591-55-9	3
3		4-Pyridinol	95	C5H5NO	000626-64-2	2
4		Pyridine, 1-oxide	95	C5H5NO	000694-59-7	2
5		2(1H)-Pyridinone	95	C5H5NO	000142-08-5	2



Data Path : Z:\svoasrv\HPCHEM1\BNA_N\Data\BN100121\
 Data File : BN016673.D
 Acq On : 02 Oct 2021 16:33
 Operator : CG/JU
 Sample : PB139306BS
 Misc :
 ALS Vial : 41 Sample Multiplier: 1

Instrument :
 BNA_N
 ClientSampleID :
 PB139306BS

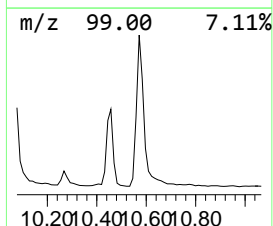
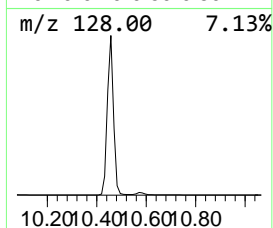
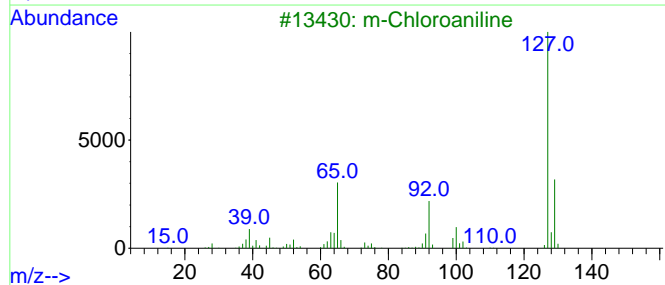
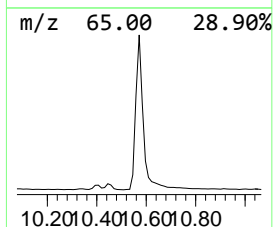
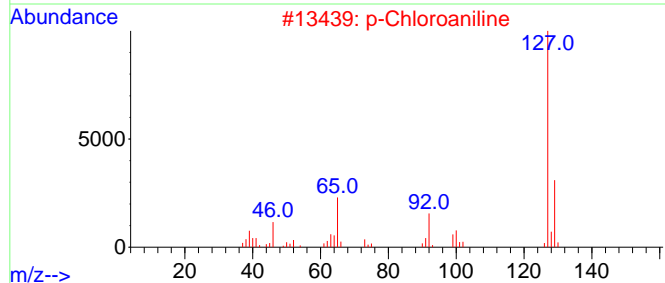
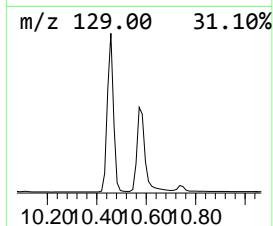
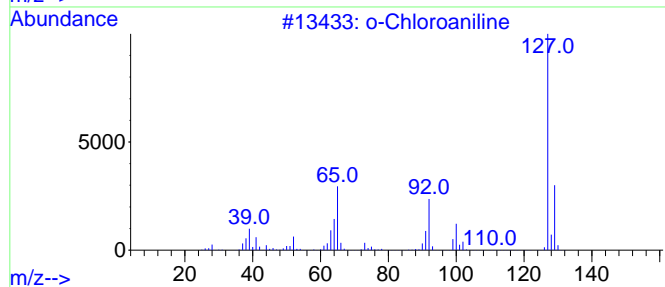
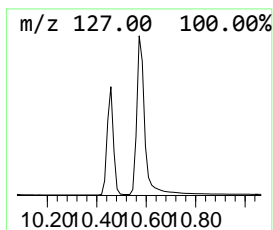
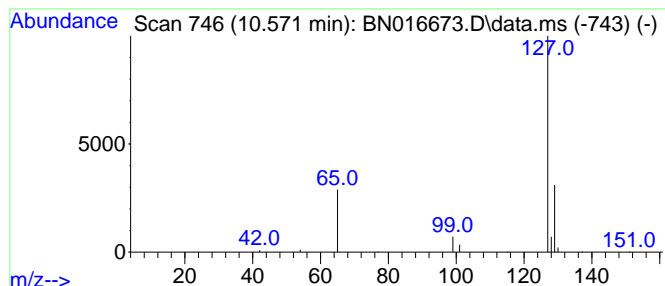
Quant Method : Z:\SVOASRV\HPCHEM1\BNA_N\METHODS\8270-SIM-BN100121.M
 Quant Title : ASP BNA STANDARDS FOR 5 POINT CALIBRATION

TIC Library : C:\Database\NIST20.L
 TIC Integration Parameters: LSCINT.P

 Peak Number 8 o-Chloroaniline Concentration Rank 9

R.T.	EstConc	Area	Relative to ISTD	R.T.
10.571	0.13 ng	69368	Naphthalene-d8	10.406

Hit#	of 5	Tentative ID	MW	MolForm	CAS#	Qual
1		o-Chloroaniline	127	C6H6ClN	000095-51-2	90
2		p-Chloroaniline	127	C6H6ClN	000106-47-8	90
3		m-Chloroaniline	127	C6H6ClN	000108-42-9	90
4		4-(Chloromethyl)pyridine	127	C6H6ClN	010445-91-7	86
5		Picloxydine	474	C20H24Cl2N10	005636-92-0	83



Data Path : Z:\svoasrv\HPCHEM1\BNA_N\Data\BN100121\
 Data File : BN016673.D
 Acq On : 02 Oct 2021 16:33
 Operator : CG/JU
 Sample : PB139306BS
 Misc :
 ALS Vial : 41 Sample Multiplier: 1

Instrument :
 BNA_N
 ClientSampleId :
 PB139306BS

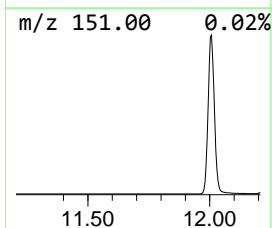
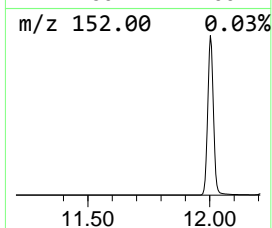
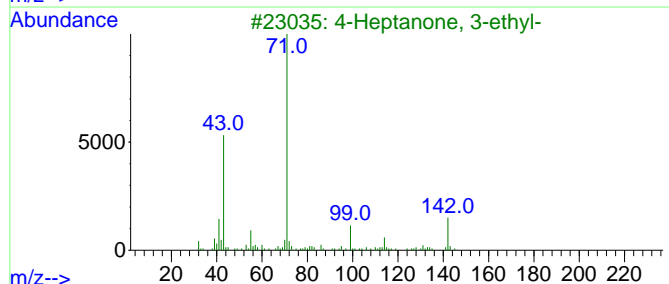
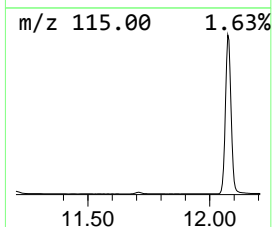
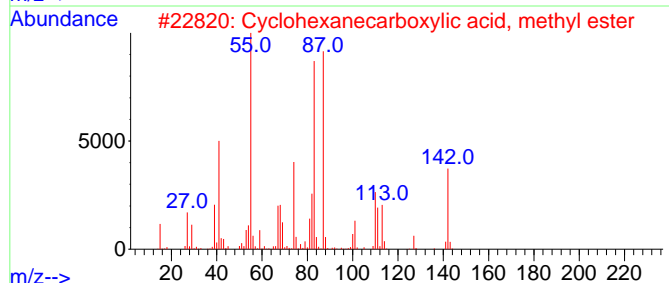
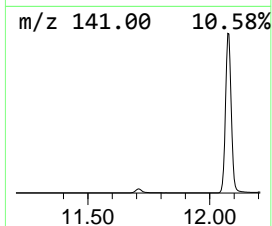
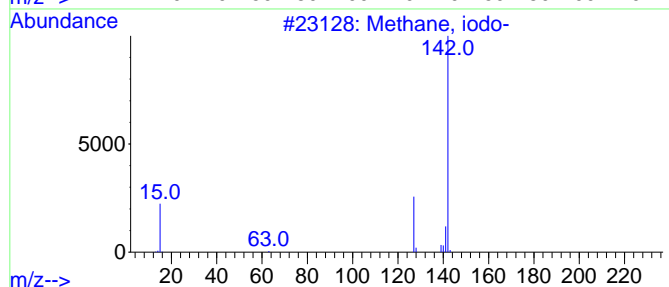
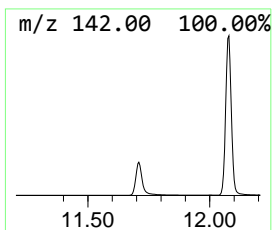
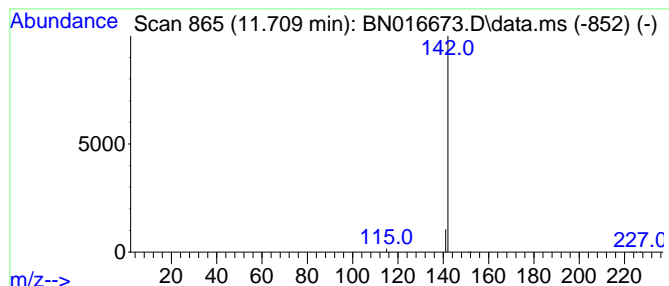
Quant Method : Z:\SVOASRV\HPCHEM1\BNA_N\METHODS\8270-SIM-BN100121.M
 Quant Title : ASP BNA STANDARDS FOR 5 POINT CALIBRATION

TIC Library : C:\Database\NIST20.L
 TIC Integration Parameters: LSCINT.P

 Peak Number 9 Methane, iodo- Concentration Rank 18

R.T.	EstConc	Area	Relative to ISTD	R.T.
11.709	0.05 ng	28755	Naphthalene-d8	10.406

Hit#	of 5	Tentative ID	MW	MolForm	CAS#	Qual
1		Methane, iodo-	142	CH3I	000074-88-4	4
2		Cyclohexanecarboxylic acid, meth...	142	C8H14O2	004630-82-4	4
3		4-Heptanone, 3-ethyl-	142	C9H18O	001528-25-2	3
4		Cyclohexane carboxylic acid hydr...	142	C7H14N2O	038941-47-8	3
5		2-Butanone, diethylhydrazone	142	C8H18N2	028236-94-4	3



Data Path : Z:\svoasrv\HPCHEM1\BNA_N\Data\BN100121\
 Data File : BN016673.D
 Acq On : 02 Oct 2021 16:33
 Operator : CG/JU
 Sample : PB139306BS
 Misc :
 ALS Vial : 41 Sample Multiplier: 1

Instrument :
 BNA_N
 ClientSampleId :
 PB139306BS

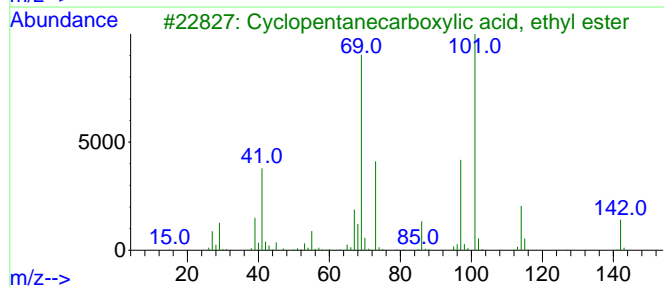
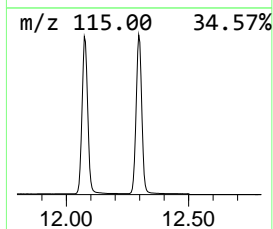
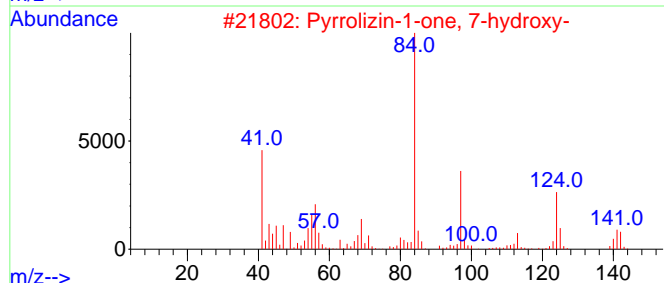
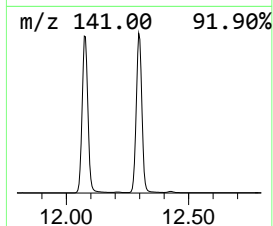
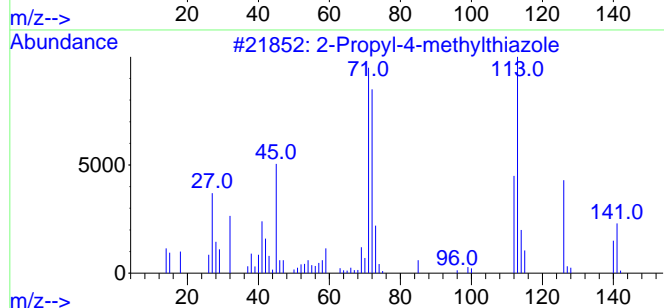
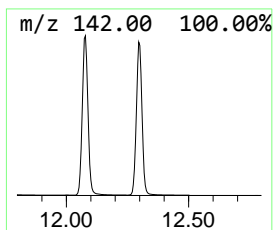
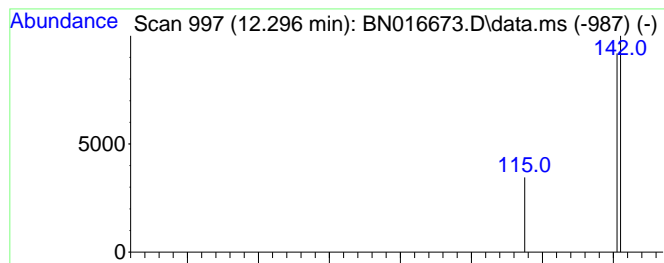
Quant Method : Z:\SVOASRV\HPCHEM1\BNA_N\METHODS\8270-SIM-BN100121.M
 Quant Title : ASP BNA STANDARDS FOR 5 POINT CALIBRATION

TIC Library : C:\Database\NIST20.L
 TIC Integration Parameters: LSCINT.P

 Peak Number 10 2-Propyl-4-methylthiazole Concentration Rank 1

R.T.	EstConc	Area	Relative to ISTD	R.T.
12.296	0.41 ng	226673	Naphthalene-d8	10.406

Hit#	of 5	Tentative ID	MW	MolForm	CAS#	Qual
1		2-Propyl-4-methylthiazole	141	C7H11NS	052414-87-6	4
2		Pyrrrolizin-1-one, 7-hydroxy-	141	C7H11N02	1000125-96-2	3
3		Cyclopentanecarboxylic acid, eth...	142	C8H14O2	1000375-86-4	3
4		2-Propionylthiazole	141	C6H7N0S	043039-98-1	3
5		2,4(1H,3H)-Pyrimidinedione, 6-am...	141	C5H7N3O2	002434-53-9	2



Data Path : Z:\svoasrv\HPCHEM1\BNA_N\Data\BN100121\
 Data File : BN016673.D
 Acq On : 02 Oct 2021 16:33
 Operator : CG/JU
 Sample : PB139306BS
 Misc :
 ALS Vial : 41 Sample Multiplier: 1

Instrument :
 BNA_N
 ClientSampleID :
 PB139306BS

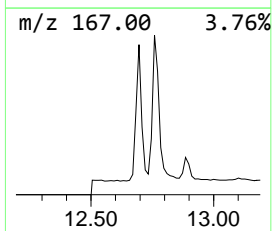
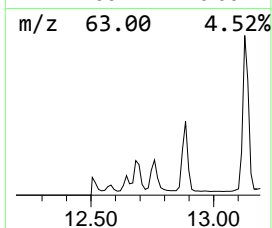
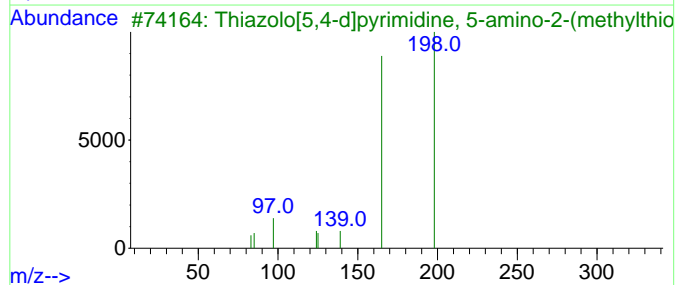
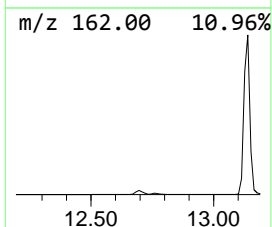
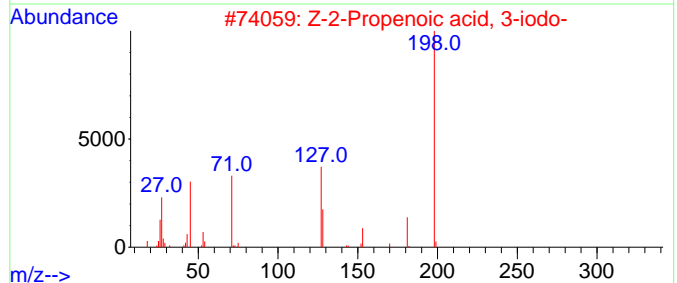
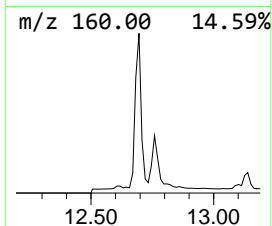
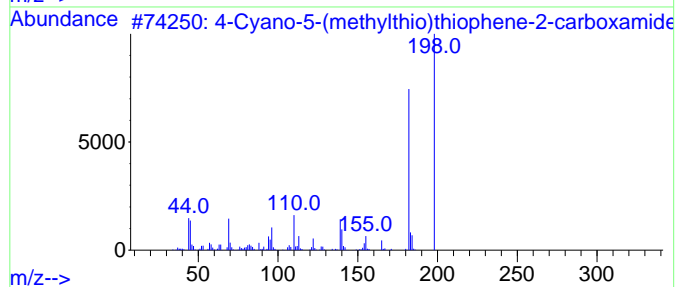
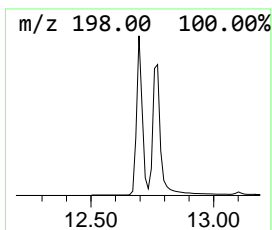
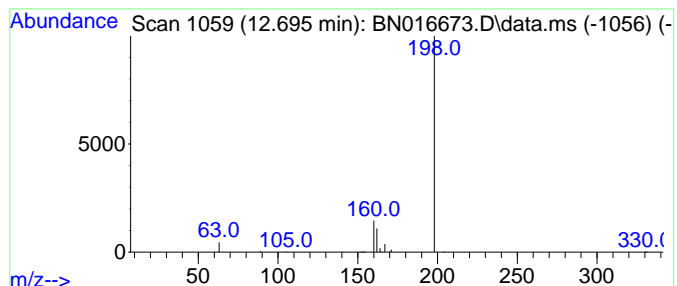
Quant Method : Z:\SVOASRV\HPCHEM1\BNA_N\METHODS\8270-SIM-BN100121.M
 Quant Title : ASP BNA STANDARDS FOR 5 POINT CALIBRATION

TIC Library : C:\Database\NIST20.L
 TIC Integration Parameters: LSCINT.P

 Peak Number 11 4-Cyano-5-(methylthio)thiop... Concentration Rank 17

R.T.	EstConc	Area	Relative to ISTD	R.T.
12.695	0.05 ng	29580	Acenaphthene-d10	14.269

Hit#	of 5	Tentative ID	MW	MolForm	CAS#	Qual
1		4-Cyano-5-(methylthio)thiophene-...	198	C7H6N2OS2	1000267-39-2	3
2		Z-2-Propenoic acid, 3-iodo-	198	C3H3IO2	1000308-86-8	3
3		Thiazolo[5,4-d]pyrimidine, 5-ami...	198	C6H6N4S2	019835-31-5	3
4		1-Methyl-1,8-diazaundecan-2,9-dione	198	C10H18N2O2	1000298-94-5	3
5		E-2-Propenoic acid, 3-iodo-	198	C3H3IO2	1000308-86-7	3



Data Path : Z:\svoasrv\HPCHEM1\BNA_N\Data\BN100121\
 Data File : BN016673.D
 Acq On : 02 Oct 2021 16:33
 Operator : CG/JU
 Sample : PB139306BS
 Misc :
 ALS Vial : 41 Sample Multiplier: 1

Instrument :
 BNA_N
 ClientSampleId :
 PB139306BS

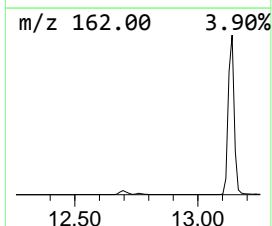
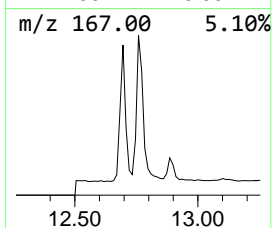
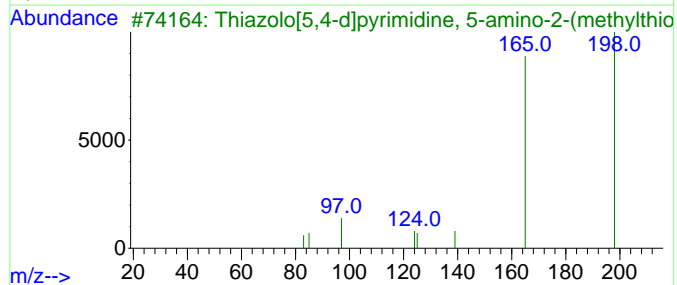
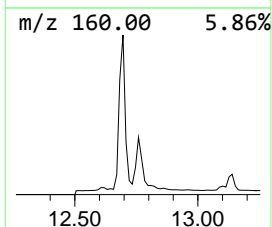
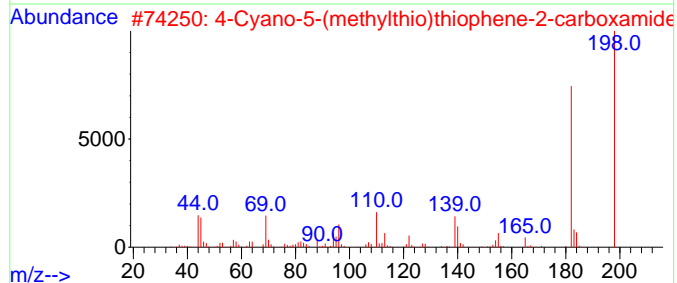
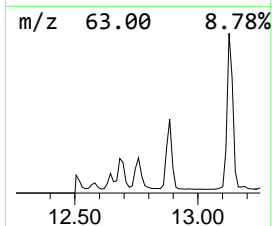
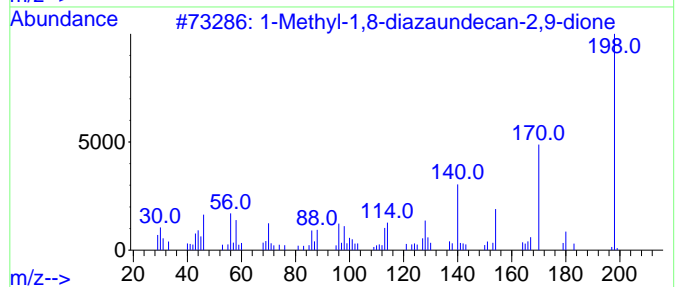
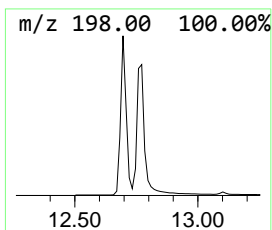
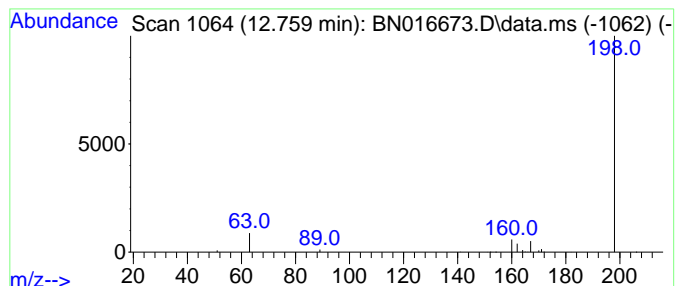
Quant Method : Z:\SVOASRV\HPCHEM1\BNA_N\METHODS\8270-SIM-BN100121.M
 Quant Title : ASP BNA STANDARDS FOR 5 POINT CALIBRATION

TIC Library : C:\Database\NIST20.L
 TIC Integration Parameters: LSCINT.P

 Peak Number 12 1-Methyl-1,8-diazaundecan-2... Concentration Rank 19

R.T.	EstConc	Area	Relative to ISTD	R.T.
12.759	0.05 ng	28014	Acenaphthene-d10	14.269

Hit#	of 5	Tentative ID	MW	MolForm	CAS#	Qual
1		1-Methyl-1,8-diazaundecan-2,9-dione	198	C10H18N2O2	1000298-94-5	4
2		4-Cyano-5-(methylthio)thiophene-...	198	C7H6N2OS2	1000267-39-2	3
3		Thiazolo[5,4-d]pyrimidine, 5-ami...	198	C6H6N4S2	019835-31-5	3
4		E-2-Propenoic acid, 3-iodo-	198	C3H3IO2	1000308-86-7	3
5		Z-2-Propenoic acid, 3-iodo-	198	C3H3IO2	1000308-86-8	3



Data Path : Z:\svoasrv\HPCHEM1\BNA_N\Data\BN100121\
 Data File : BN016673.D
 Acq On : 02 Oct 2021 16:33
 Operator : CG/JU
 Sample : PB139306BS
 Misc :
 ALS Vial : 41 Sample Multiplier: 1

Instrument :
 BNA_N
 ClientSampleId :
 PB139306BS

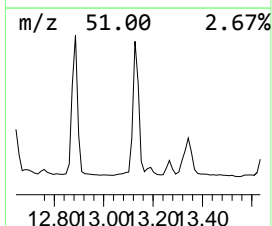
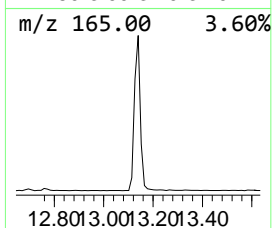
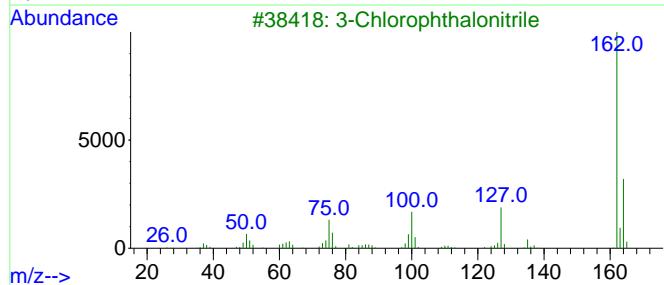
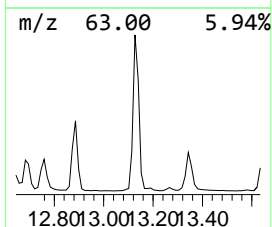
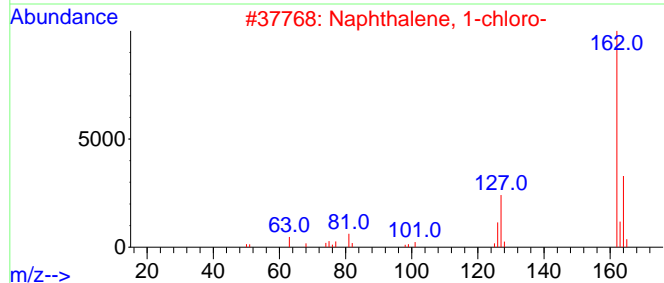
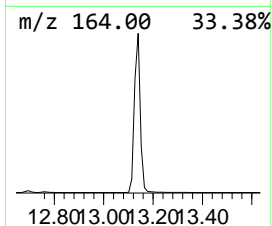
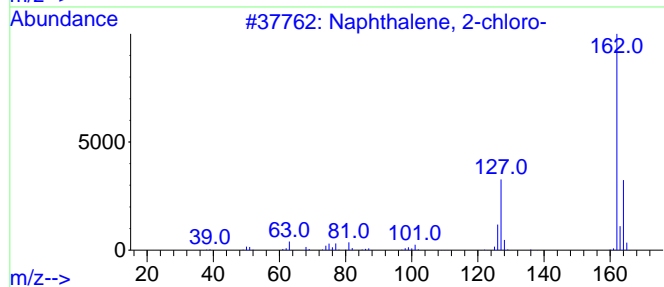
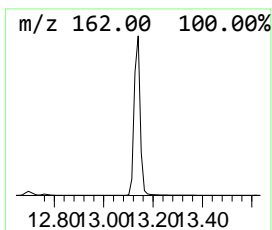
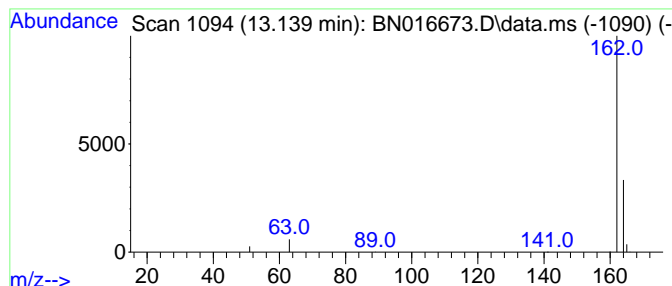
Quant Method : Z:\SVOASRV\HPCHEM1\BNA_N\METHODS\8270-SIM-BN100121.M
 Quant Title : ASP BNA STANDARDS FOR 5 POINT CALIBRATION

TIC Library : C:\Database\NIST20.L
 TIC Integration Parameters: LSCINT.P

 Peak Number 13 Naphthalene, 2-chloro- Concentration Rank 4

R.T.	EstConc	Area	Relative to ISTD	R.T.
13.140	0.26 ng	146698	Acenaphthene-d10	14.269

Hit#	of	5	Tentative ID	MW	MolForm	CAS#	Qual
1			Naphthalene, 2-chloro-	162	C10H7Cl	000091-58-7	74
2			Naphthalene, 1-chloro-	162	C10H7Cl	000090-13-1	74
3			3-Chlorophthalonitrile	162	C8H3ClN2	076241-79-7	7
4			2-Chloroisophthalonitrile	162	C8H3ClN2	028442-78-6	7
5			2-Amino-4-chloro-1,3-thiazole-5-...	162	C4H3ClN2OS	076874-79-8	5



Data Path : Z:\svoasrv\HPCHEM1\BNA_N\Data\BN100121\
 Data File : BN016673.D
 Acq On : 02 Oct 2021 16:33
 Operator : CG/JU
 Sample : PB139306BS
 Misc :
 ALS Vial : 41 Sample Multiplier: 1

Instrument :
 BNA_N
 ClientSampleId :
 PB139306BS

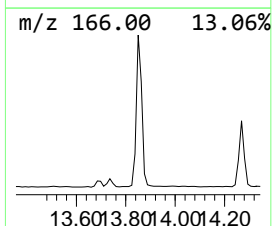
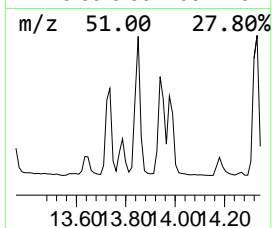
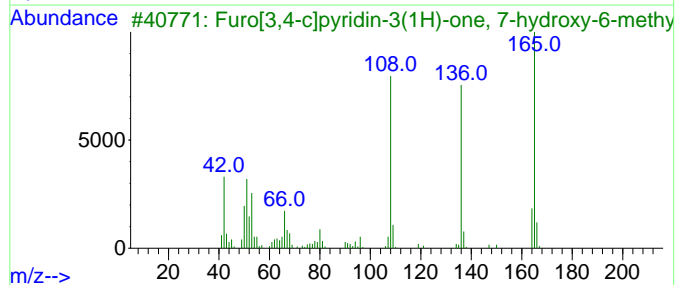
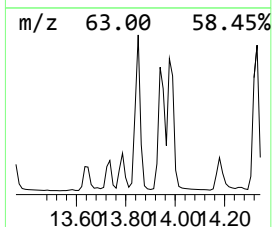
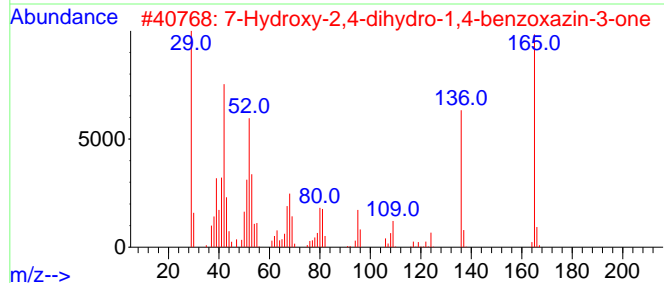
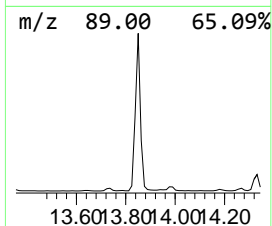
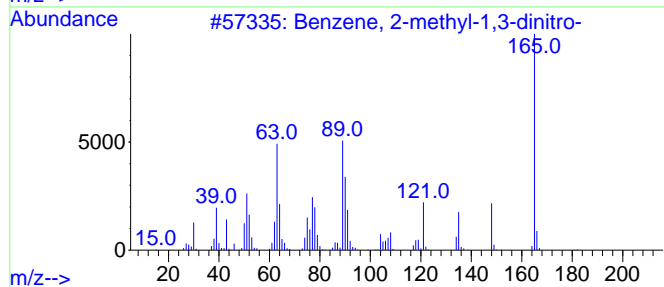
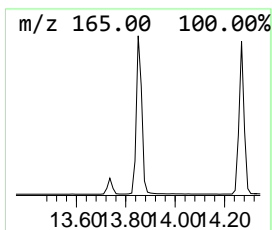
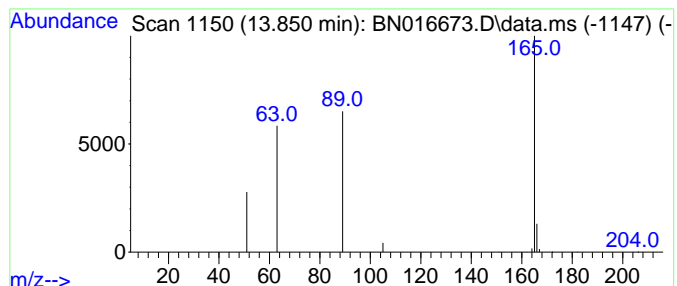
Quant Method : Z:\SVOASRV\HPCHEM1\BNA_N\METHODS\8270-SIM-BN100121.M
 Quant Title : ASP BNA STANDARDS FOR 5 POINT CALIBRATION

TIC Library : C:\Database\NIST20.L
 TIC Integration Parameters: LSCINT.P

 Peak Number 14 Benzene, 2-methyl-1,3-dinitro- Concentration Rank 16

R.T.	EstConc	Area	Relative to ISTD	R.T.
13.850	0.06 ng	31802	Acenaphthene-d10	14.269

Hit#	of	5	Tentative ID	MW	MolForm	CAS#	Qual
1			Benzene, 2-methyl-1,3-dinitro-	182	C7H6N2O4	000606-20-2	83
2			7-Hydroxy-2,4-dihydro-1,4-benzox...	165	C8H7NO3	067193-97-9	9
3			Furo[3,4-c]pyridin-3(1H)-one, 7-...	165	C8H7NO3	004543-56-0	9
4			5,6-Dimethoxy-3-pyridazinecarbon...	165	C7H7N3O2	020552-46-9	9
5			6-Oxa-3-azabicyclo[3.2.1]octa-1,...	165	C8H7NO3	055255-96-4	9



Data Path : Z:\svoasrv\HPCHEM1\BNA_N\Data\BN100121\
 Data File : BN016673.D
 Acq On : 02 Oct 2021 16:33
 Operator : CG/JU
 Sample : PB139306BS
 Misc :
 ALS Vial : 41 Sample Multiplier: 1

Instrument :
 BNA_N
 ClientSampleID :
 PB139306BS

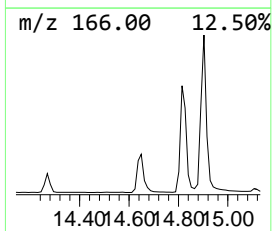
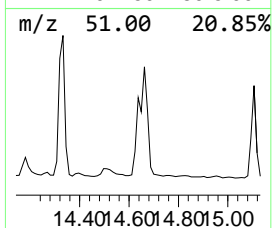
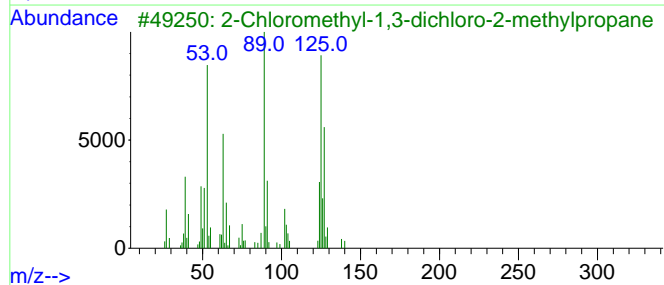
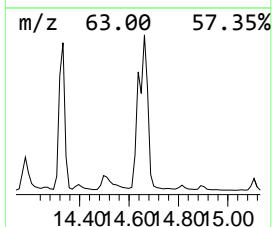
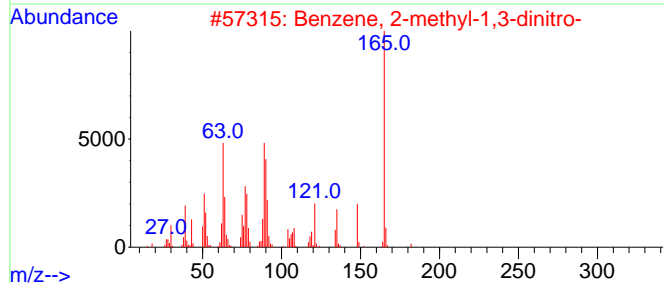
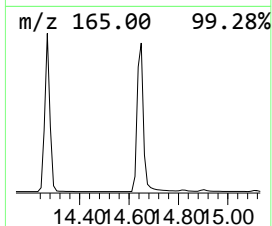
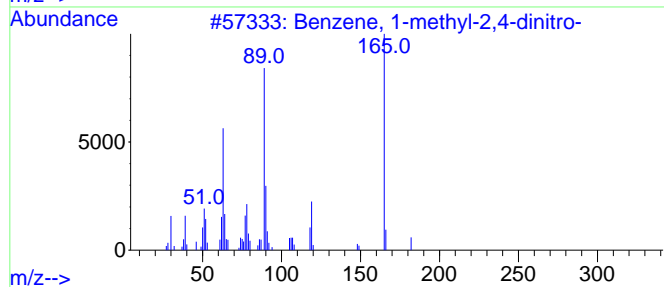
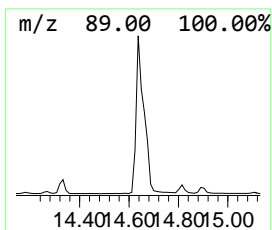
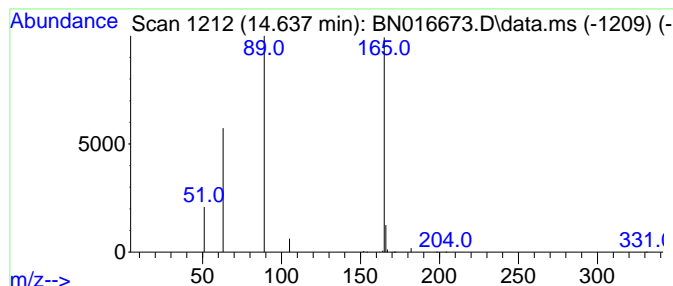
Quant Method : Z:\SVOASRV\HPCHEM1\BNA_N\METHODS\8270-SIM-BN100121.M
 Quant Title : ASP BNA STANDARDS FOR 5 POINT CALIBRATION

TIC Library : C:\Database\NIST20.L
 TIC Integration Parameters: LSCINT.P

 Peak Number 15 Benzene, 1-methyl-2,4-dinitro- Concentration Rank 12

R.T.	EstConc	Area	Relative to ISTD	R.T.
14.637	0.09 ng	49272	Acenaphthene-d10	14.269

Hit#	of	5	Tentative ID	MW	MolForm	CAS#	Qual
1			Benzene, 1-methyl-2,4-dinitro-	182	C7H6N2O4	000121-14-2	74
2			Benzene, 2-methyl-1,3-dinitro-	182	C7H6N2O4	000606-20-2	38
3			2-Chloromethyl-1,3-dichloro-2-me...	174	C5H9Cl3	001067-09-0	9
4			5-[2-Chlorophenyl]tetraazole	180	C7H5ClN4	050907-46-5	9
5			6-Nitro-m-tolunitrile	162	C8H6N2O2	064113-86-6	9



Data Path : Z:\svoasrv\HPCHEM1\BNA_N\Data\BN100121\
 Data File : BN016673.D
 Acq On : 02 Oct 2021 16:33
 Operator : CG/JU
 Sample : PB139306BS
 Misc :
 ALS Vial : 41 Sample Multiplier: 1

Instrument :
 BNA_N
 ClientSampleId :
 PB139306BS

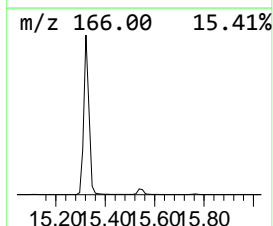
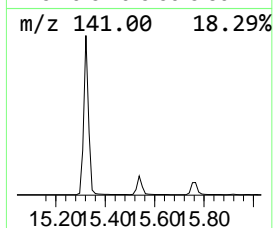
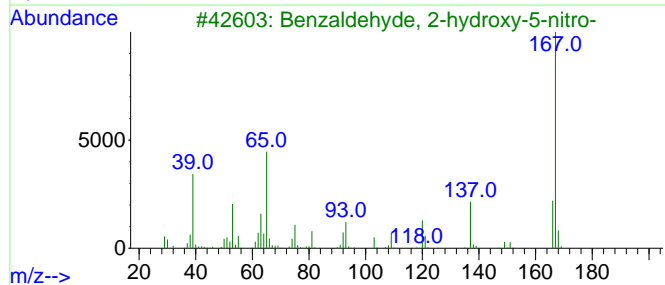
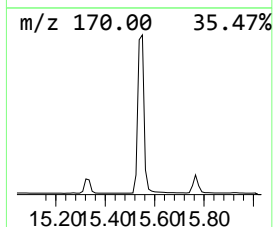
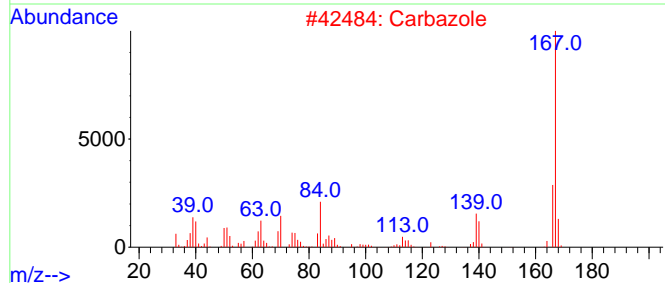
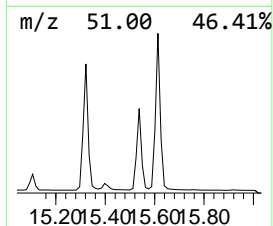
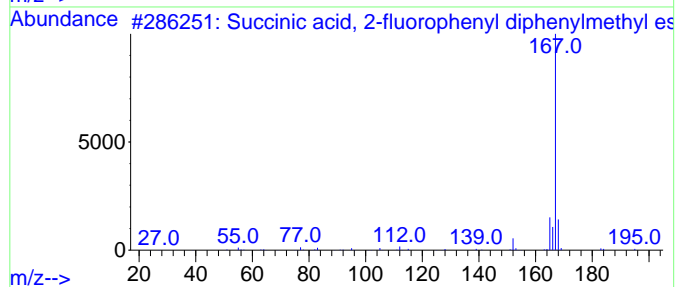
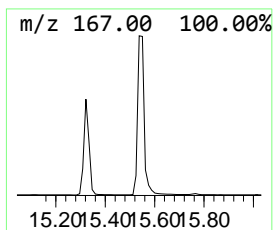
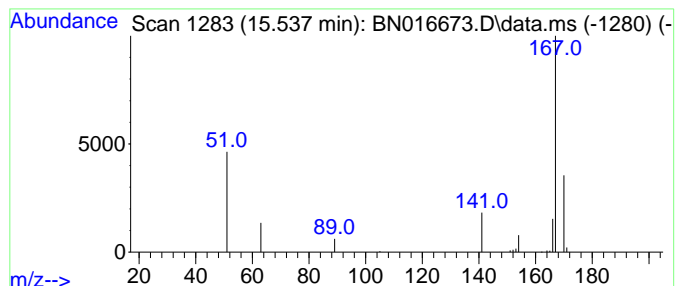
Quant Method : Z:\SVOASRV\HPCHEM1\BNA_N\METHODS\8270-SIM-BN100121.M
 Quant Title : ASP BNA STANDARDS FOR 5 POINT CALIBRATION

TIC Library : C:\Database\NIST20.L
 TIC Integration Parameters: LSCINT.P

 Peak Number 16 Succinic acid, 2-fluorophen... Concentration Rank 8

R.T.	EstConc	Area	Relative to ISTD	R.T.
15.537	0.13 ng	71819	Acenaphthene-d10	14.269

Hit#	of	5	Tentative ID	MW	MolForm	CAS#	Qual
1			Succinic acid, 2-fluorophenyl di...	378	C23H19F04	1000390-17-0	9
2			Carbazole	167	C12H9N	000086-74-8	7
3			Benzaldehyde, 2-hydroxy-5-nitro-	167	C7H5NO4	000097-51-8	5
4			5-Fluoro-2-methyl-benzothiazole	167	C8H6FNS	000399-75-7	5
5			2-Azafluorene	167	C12H9N	000244-40-6	4



Data Path : Z:\svoasrv\HPCHEM1\BNA_N\Data\BN100121\
 Data File : BN016673.D
 Acq On : 02 Oct 2021 16:33
 Operator : CG/JU
 Sample : PB139306BS
 Misc :
 ALS Vial : 41 Sample Multiplier: 1

Instrument :
 BNA_N
 ClientSampleID :
 PB139306BS

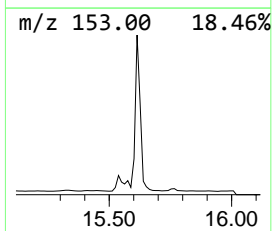
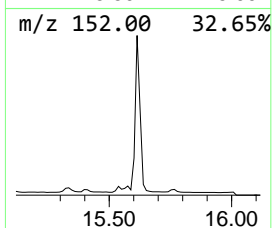
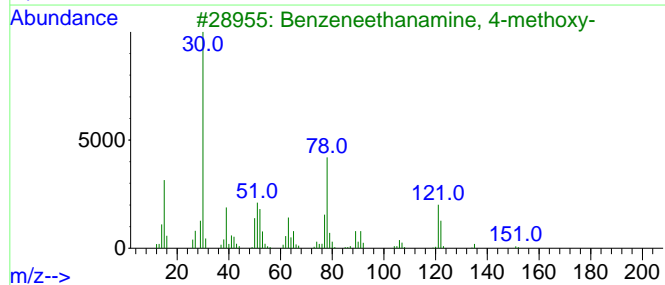
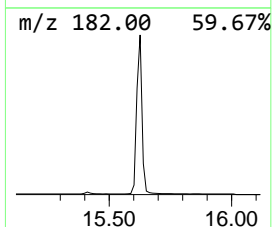
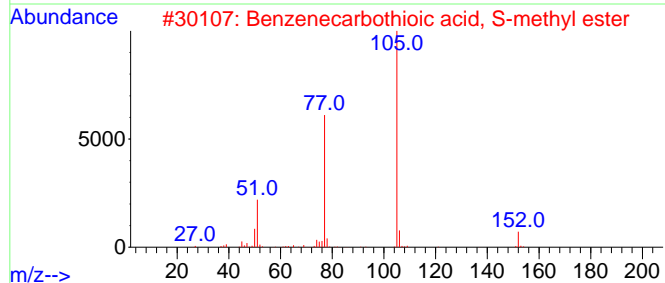
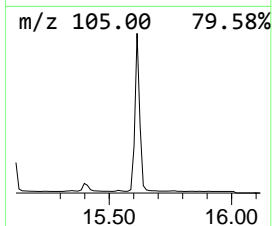
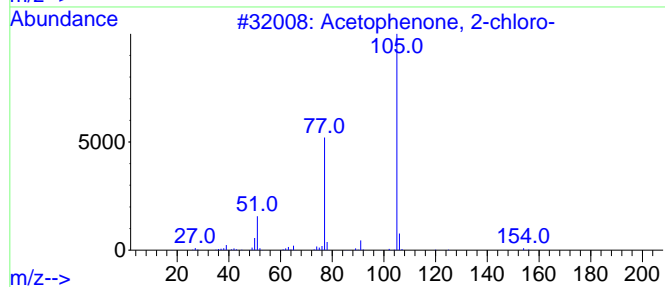
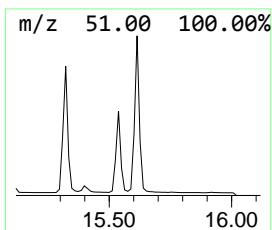
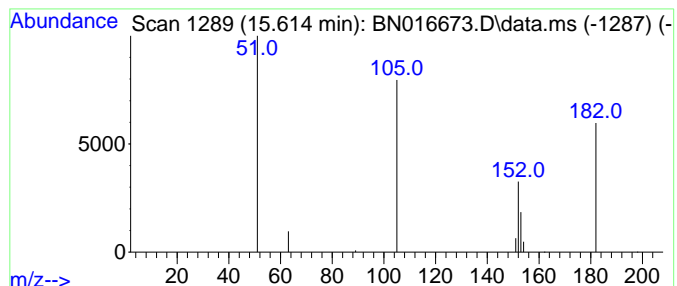
Quant Method : Z:\SVOASRV\HPCHEM1\BNA_N\METHODS\8270-SIM-BN100121.M
 Quant Title : ASP BNA STANDARDS FOR 5 POINT CALIBRATION

TIC Library : C:\Database\NIST20.L
 TIC Integration Parameters: LSCINT.P

 Peak Number 17 Acetophenone, 2-chloro- Concentration Rank 7

R.T.	EstConc	Area	Relative to ISTD	R.T.
15.614	0.13 ng	73517	Acenaphthene-d10	14.269

Hit#	of 5	Tentative ID	MW	MolForm	CAS#	Qual
1		Acetophenone, 2-chloro-	154	C8H7ClO	000532-27-4	3
2		Benzenecarbothioic acid, S-methy...	152	C8H8OS	005925-68-8	3
3		Benzenethanamine, 4-methoxy-	151	C9H13NO	000055-81-2	3
4		Propionitrile	51	C3HN	001070-71-9	3
5		Propanal, 2-(benzoyloxy)-, (R)-	178	C10H10O3	078871-04-2	2



Data Path : Z:\svoasrv\HPCHEM1\BNA_N\Data\BN100121\
 Data File : BN016673.D
 Acq On : 02 Oct 2021 16:33
 Operator : CG/JU
 Sample : PB139306BS
 Misc :
 ALS Vial : 41 Sample Multiplier: 1

Instrument :
 BNA_N
 ClientSampleID :
 PB139306BS

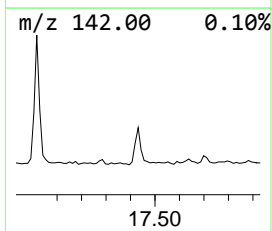
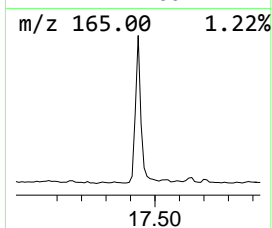
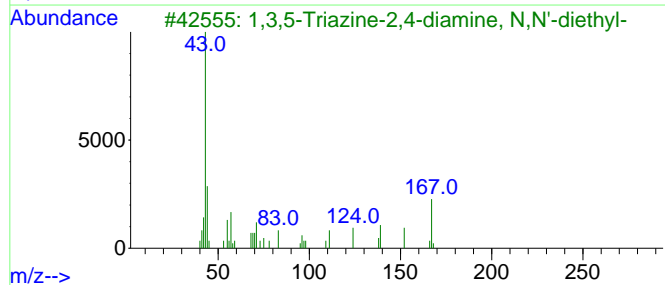
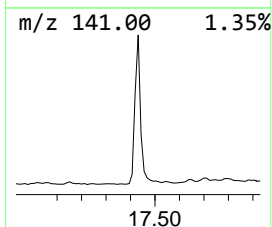
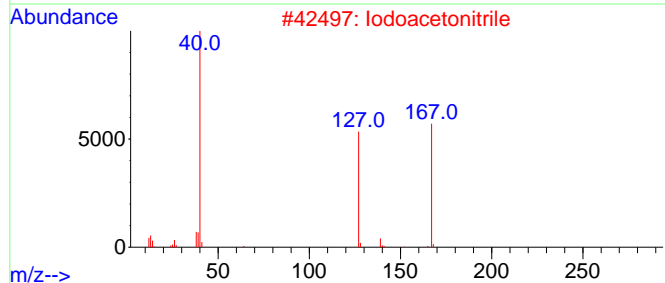
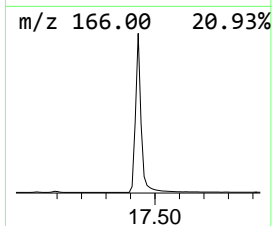
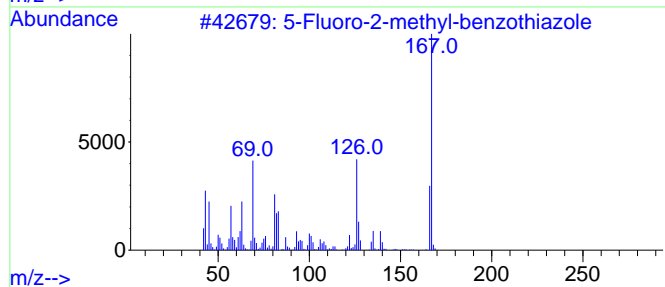
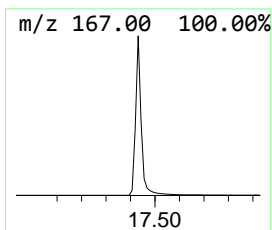
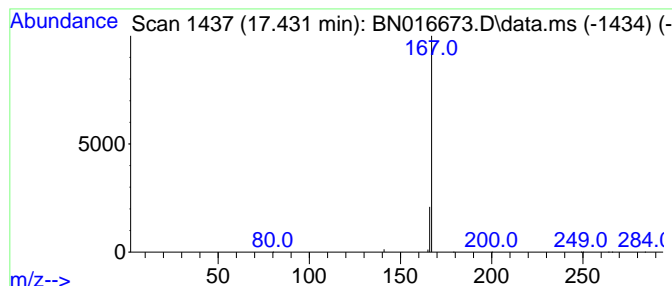
Quant Method : Z:\SVOASRV\HPCHEM1\BNA_N\METHODS\8270-SIM-BN100121.M
 Quant Title : ASP BNA STANDARDS FOR 5 POINT CALIBRATION

TIC Library : C:\Database\NIST20.L
 TIC Integration Parameters: LSCINT.P

 Peak Number 18 5-Fluoro-2-methyl-benzothia... Concentration Rank 3

R.T.	EstConc	Area	Relative to ISTD	R.T.
17.431	0.34 ng	156966	Phenanthrene-d10	17.017

Hit#	of 5	Tentative ID	MW	MolForm	CAS#	Qual
1		5-Fluoro-2-methyl-benzothiazole	167	C8H6FNS	000399-75-7	5
2		Iodoacetoneitrile	167	C2H2IN	000624-75-9	4
3		1,3,5-Triazine-2,4-diamine, N,N'...	167	C7H13N5	004150-59-8	4
4		1-Cyclopropanecarbonylpiperidin-...	167	C9H13N02	063463-43-4	4
5		2-propenoic acid, 2-methyl-, 2-(...	167	C7H9N3O2	1000404-53-2	3



Data Path : Z:\svoasrv\HPCHEM1\BNA_N\Data\BN100121\
 Data File : BN016673.D
 Acq On : 02 Oct 2021 16:33
 Operator : CG/JU
 Sample : PB139306BS
 Misc :
 ALS Vial : 41 Sample Multiplier: 1

Instrument :
 BNA_N
 ClientSampleId :
 PB139306BS

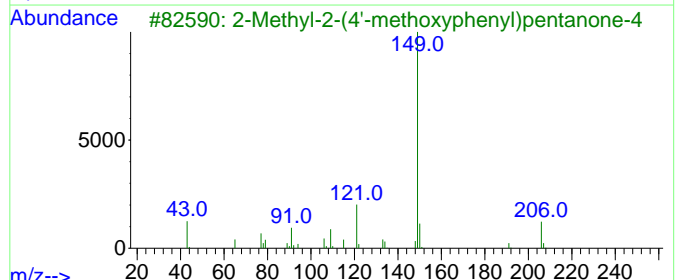
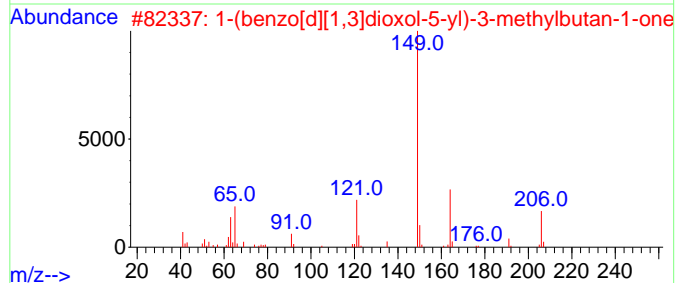
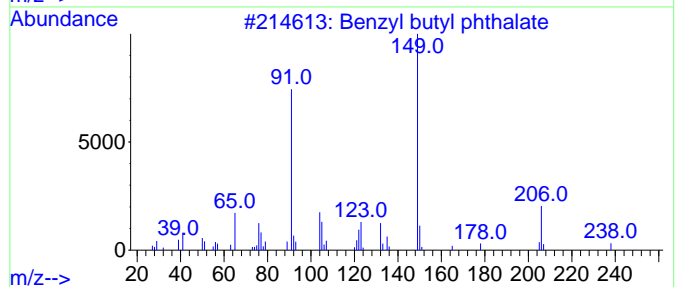
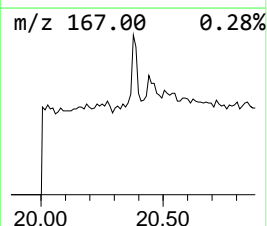
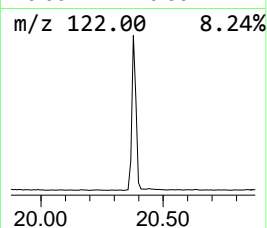
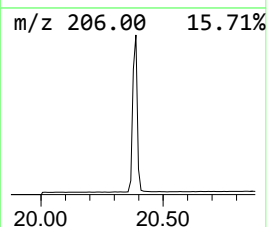
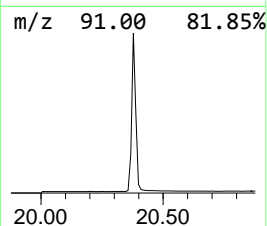
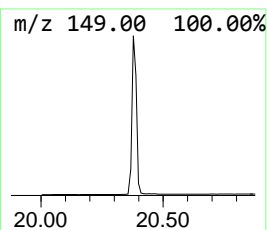
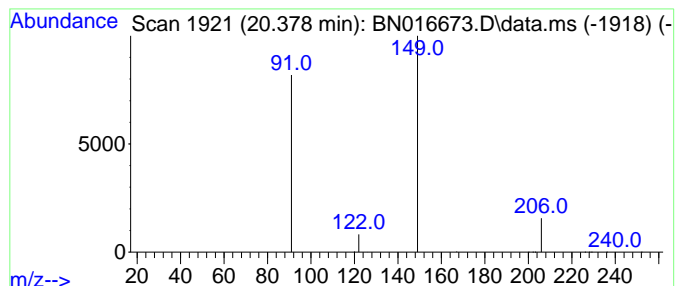
Quant Method : Z:\SVOASRV\HPCHEM1\BNA_N\METHODS\8270-SIM-BN100121.M
 Quant Title : ASP BNA STANDARDS FOR 5 POINT CALIBRATION

TIC Library : C:\Database\NIST20.L
 TIC Integration Parameters: LSCINT.P

 Peak Number 19 Benzyl butyl phthalate Concentration Rank 14

R.T.	EstConc	Area	Relative to ISTD	R.T.
20.378	0.06 ng	67293	Chrysene-d12	21.238

Hit#	of	5	Tentative ID	MW	MolForm	CAS#	Qual
1			Benzyl butyl phthalate	312	C19H20O4	000085-68-7	40
2			1-(benzo[d][1,3]dioxol-5-yl)-3-m...	206	C12H14O3	1000456-66-2	9
3			2-Methyl-2-(4'-methoxyphenyl)pen...	206	C13H18O2	185700-49-6	5
4			2-tert-Butyl-6-methylphenol, n-p...	206	C14H22O	1000395-19-2	5
5			1,3,2-Dioxarsenane, 2-butyl-	206	C7H15AsO2	042541-33-3	5



Data Path : Z:\svoasrv\HPCHEM1\BNA_N\Data\BN100121\
 Data File : BN016673.D
 Acq On : 02 Oct 2021 16:33
 Operator : CG/JU
 Sample : PB139306BS
 Misc :
 ALS Vial : 41 Sample Multiplier: 1

Instrument :
 BNA_N
 ClientSampleId :
 PB139306BS

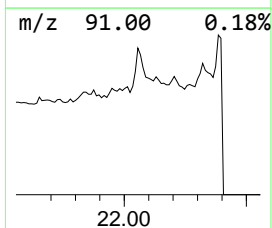
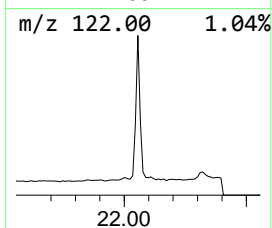
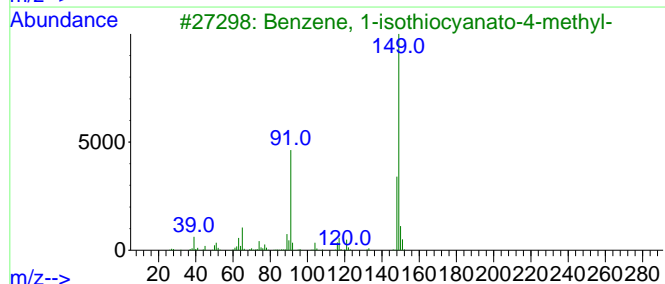
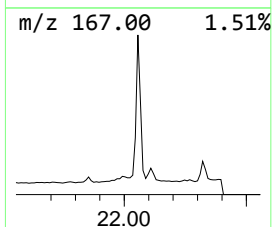
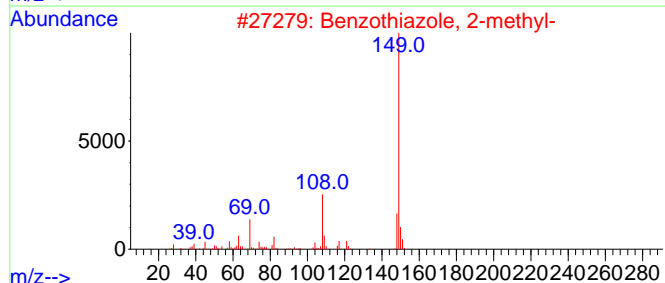
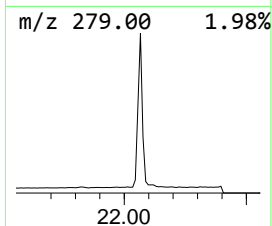
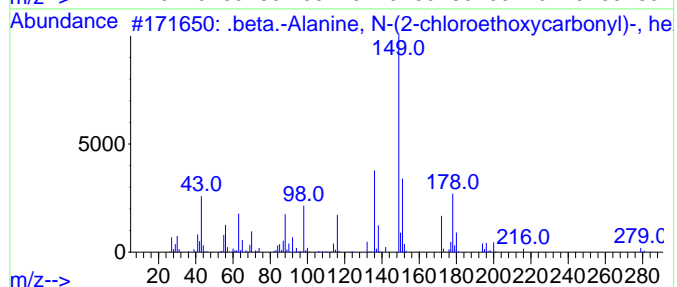
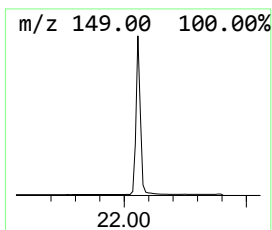
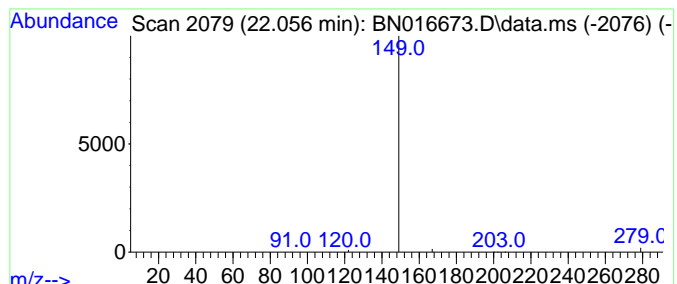
Quant Method : Z:\SVOASRV\HPCHEM1\BNA_N\METHODS\8270-SIM-BN100121.M
 Quant Title : ASP BNA STANDARDS FOR 5 POINT CALIBRATION

TIC Library : C:\Database\NIST20.L
 TIC Integration Parameters: LSCINT.P

 Peak Number 20 .beta.-Alanine, N-(2-chloro... Concentration Rank 13

R.T.	EstConc	Area	Relative to ISTD	R.T.
22.056	0.09 ng	101314	Chrysene-d12	21.238

Hit#	of 5	Tentative ID	MW	MolForm	CAS#	Qual
1		.beta.-Alanine, N-(2-chloroethox...	279	C12H22ClNO4	1010328-58-4	4
2		Benzothiazole, 2-methyl-	149	C8H7NS	000120-75-2	4
3		Benzene, 1-isothiocyanato-4-methyl-	149	C8H7NS	000622-59-3	4
4		Phthalic acid, 7-bromoheptyl oct...	454	C23H35BrO4	1000415-52-2	4
5		Pyridine, pentamethyl-	149	C10H15N	003748-83-2	4



Data Path : Z:\svoasrv\HPCHEM1\BNA_N\Data\BN100121\
 Data File : BN016673.D
 Acq On : 02 Oct 2021 16:33
 Operator : CG/JU
 Sample : PB139306BS
 Misc :
 ALS Vial : 41 Sample Multiplier: 1

Instrument :
 BNA_N
 ClientSampleId :
 PB139306BS

Quant Method : Z:\SVOASRV\HPCHEM1\BNA_N\METHODS\8270-SIM-BN100121.M
 Quant Title : ASP BNA STANDARDS FOR 5 POINT CALIBRATION

TIC Library : C:\Database\NIST0.L
 TIC Integration Parameters: LSCINT.P

TIC Top Hit name	RT	EstConc	Units	Response	--Internal Standard--			
					#	RT	Resp	Conc
1-Propanamine, ...	6.978	0.1	ng	42405	1	7.642	136704	0.4
Ethene, 1,1-dif...	7.200	0.1	ng	37940	1	7.642	136704	0.4
2-Cyclohexen-1-...	7.522	0.0	ng	17057	1	7.642	136704	0.4
6-Benzothiazola...	7.956	0.4	ng	122643	1	7.642	136704	0.4
Furan, 2,5-dihy...	8.429	0.2	ng	56644	1	7.642	136704	0.4
Fomepizole	9.342	0.2	ng	88184	2	10.406	220744	0.4
5-Hydroxy-2-pyr...	9.836	0.1	ng	31821	2	10.406	220744	0.4
o-Chloroaniline	10.571	0.1	ng	69368	2	10.406	220744	0.4
Methane, iodo-	11.709	0.1	ng	28755	2	10.406	220744	0.4
2-Propyl-4-meth...	12.296	0.4	ng	226673	2	10.406	220744	0.4
4-Cyano-5-(meth...	12.695	0.1	ng	29580	3	14.269	223664	0.4
1-Methyl-1,8-di...	12.759	0.1	ng	28014	3	14.269	223664	0.4
Naphthalene, 2-...	13.140	0.3	ng	146698	3	14.269	223664	0.4
Benzene, 2-meth...	13.850	0.1	ng	31802	3	14.269	223664	0.4
Benzene, 1-meth...	14.637	0.1	ng	49272	3	14.269	223664	0.4
Succinic acid, ...	15.537	0.1	ng	71819	3	14.269	223664	0.4
Acetophenone, 2...	15.614	0.1	ng	73517	3	14.269	223664	0.4
5-Fluoro-2-meth...	17.431	0.3	ng	156966	4	17.017	183710	0.4
Benzyl butyl ph...	20.378	0.1	ng	67293	5	21.238	465789	0.4
.beta.-Alanine,...	22.056	0.1	ng	101314	5	21.238	465789	0.4