

Data Path : Z:\svoasrv\HPCHEM1\BNA\_N\Data\BN100622\  
 Data File : BN022026.D  
 Acq On : 06 Oct 2022 19:44  
 Operator : CG/JU  
 Sample : PB148152BSD  
 Misc :  
 ALS Vial : 13 Sample Multiplier: 1

Instrument :  
 BNA\_N  
 ClientSampleId :  
 PB148152BSD

Quant Time: Oct 07 00:41:38 2022  
 Quant Method : Z:\SVOASRV\HPCHEM1\BNA\_N\METHODS\8270-SIM-BN100322.M  
 Quant Title : ASP BNA STANDARDS FOR 5 POINT CALIBRATION  
 QLast Update : Tue Oct 04 01:32:21 2022  
 Response via : Initial Calibration

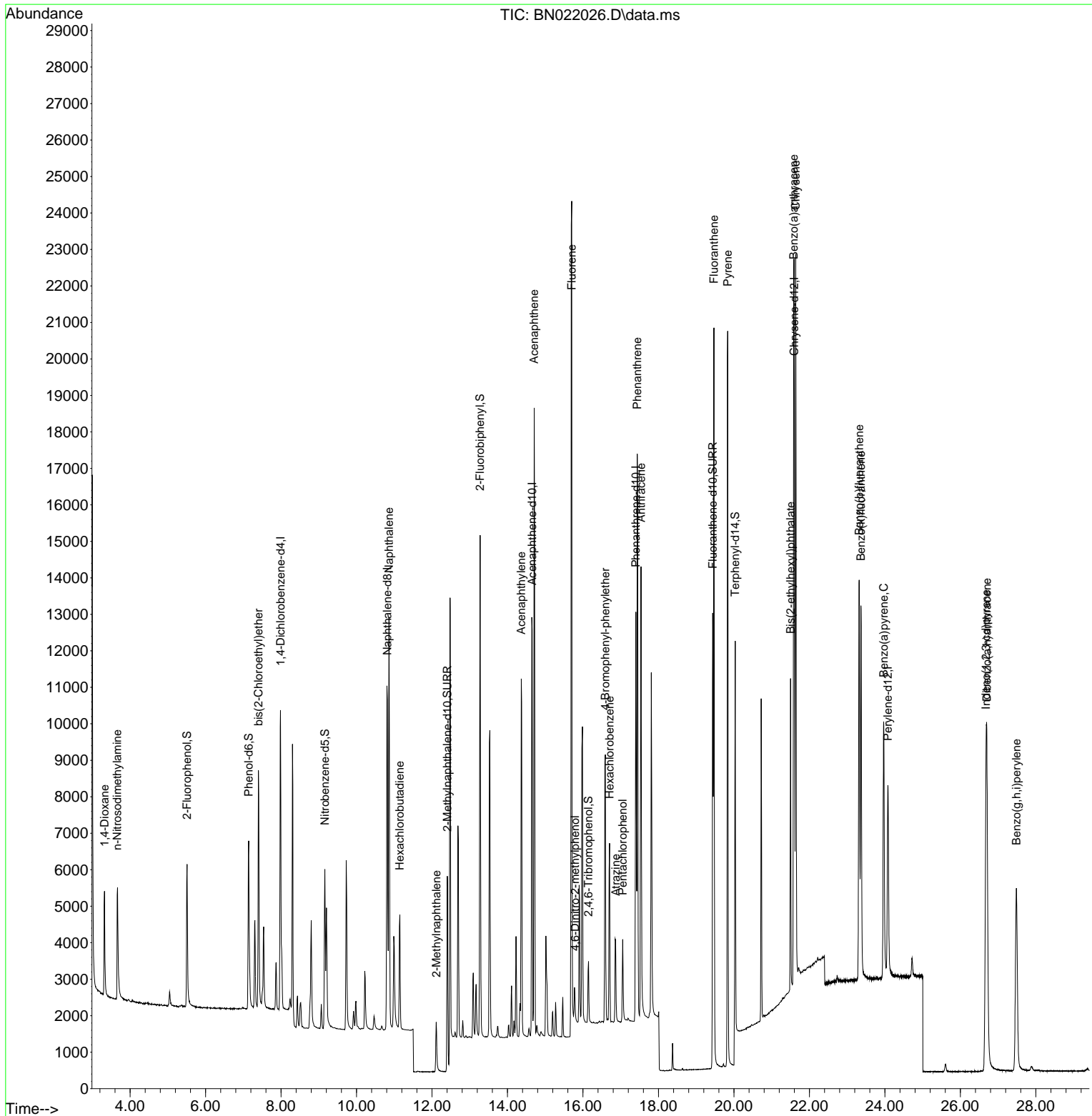
Compound	R.T.	QIon	Response	Conc Units	Dev(Min)	
Internal Standards						
1) 1,4-Dichlorobenzene-d4	7.986	152	4293	0.400 ng	0.00	
7) Naphthalene-d8	10.816	136	13519	0.400 ng	# 0.00	
13) Acenaphthene-d10	14.653	164	7094	0.400 ng	0.00	
19) Phenanthrene-d10	17.400	188	14329	0.400 ng	#-0.01	
29) Chrysene-d12	21.600	240	10990	0.400 ng	0.00	
35) Perylene-d12	24.078	264	8273	0.400 ng	0.00	
System Monitoring Compounds						
4) 2-Fluorophenol	5.508	112	3766	0.379 ng	0.00	
5) Phenol-d6	7.141	99	4967	0.385 ng	0.00	
8) Nitrobenzene-d5	9.161	82	4024	0.370 ng	0.00	
11) 2-Methylnaphthalene-d10	12.406	152	9281	0.373 ng	0.00	
14) 2,4,6-Tribromophenol	16.146	330	1014	0.375 ng	0.00	
15) 2-Fluorobiphenyl	13.274	172	11768	0.380 ng	-0.01	
27) Fluoranthene-d10	19.437	212	13547	0.356 ng	0.00	
31) Terphenyl-d14	20.033	244	8298	0.376 ng	0.00	
Target Compounds						
2) 1,4-Dioxane	3.320	88	2001	0.360 ng	96	
3) n-Nitrosodimethylamine	3.659	42	2233	0.370 ng	# 99	
6) bis(2-Chloroethyl)ether	7.401	93	5119	0.375 ng	99	
9) Naphthalene	10.859	128	15040	0.368 ng	100	
10) Hexachlorobutadiene	11.147	225	2626	0.371 ng	# 99	
12) 2-Methylnaphthalene	12.111	142	2559	0.423 ng	# 93	
16) Acenaphthylene	14.365	152	11964	0.354 ng	100	
17) Acenaphthene	14.707	154	8718	0.367 ng	100	
18) Fluorene	15.701	166	10882	0.380 ng	99	
20) 4,6-Dinitro-2-methylph...	15.786	198	705	0.442 ng	# 63	
21) 4-Bromophenyl-phenylether	16.593	248	3238	0.371 ng	# 87	
22) Hexachlorobenzene	16.705	284	3915	0.361 ng	99	
23) Atrazine	16.866	200	2268	0.350 ng	95	
24) Pentachlorophenol	17.052	266	1186	0.356 ng	97	
25) Phenanthrene	17.437	178	17992	0.365 ng	99	
26) Anthracene	17.536	178	13922	0.352 ng	99	
28) Fluoranthene	19.470	202	18713	0.355 ng	100	
30) Pyrene	19.833	202	18547	0.384 ng	100	
32) Benzo(a)anthracene	21.582	228	14731	0.356 ng	99	
33) Chrysene	21.636	228	16957	0.370 ng	99	
34) Bis(2-ethylhexyl)phtha...	21.501	149	7764	0.392 ng	100	
36) Indeno(1,2,3-cd)pyrene	26.678	276	14381	0.344 ng	99	
37) Benzo(b)fluoranthene	23.318	252	14678	0.374 ng	98	
38) Benzo(k)fluoranthene	23.365	252	14276	0.366 ng	99	
39) Benzo(a)pyrene	23.967	252	11154	0.373 ng	# 95	
40) Dibenzo(a,h)anthracene	26.701	278	11217	0.336 ng	99	
41) Benzo(g,h,i)perylene	27.482	276	11536	0.321 ng	99	

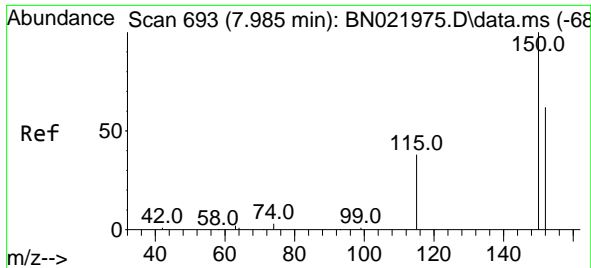
(#) = qualifier out of range (m) = manual integration (+) = signals summed

Data Path : Z:\svoasrv\HPCHEM1\BNA\_N\Data\BN100622\  
 Data File : BN022026.D  
 Acq On : 06 Oct 2022 19:44  
 Operator : CG/JU  
 Sample : PB148152BSD  
 Misc :  
 ALS Vial : 13 Sample Multiplier: 1

Instrument :  
 BNA\_N  
 ClientSampleId :  
 PB148152BSD

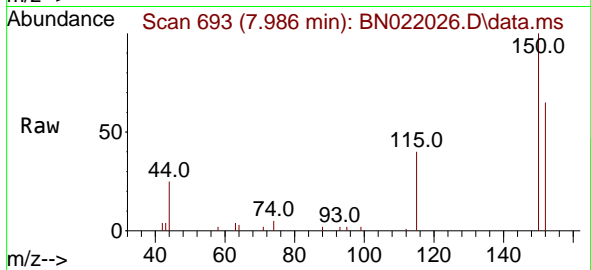
Quant Time: Oct 07 00:41:38 2022  
 Quant Method : Z:\SVOASRV\HPCHEM1\BNA\_N\METHODS\8270-SIM-BN100322.M  
 Quant Title : ASP BNA STANDARDS FOR 5 POINT CALIBRATION  
 QLast Update : Tue Oct 04 01:32:21 2022  
 Response via : Initial Calibration



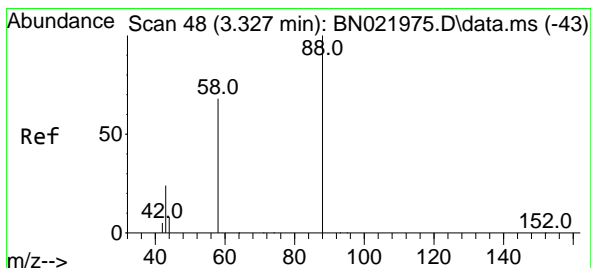
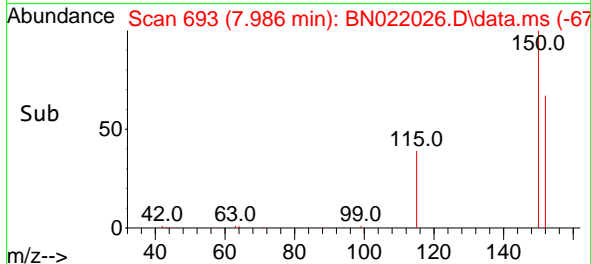
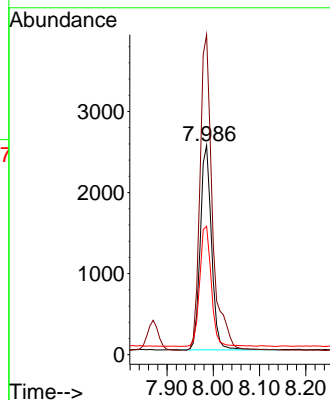


#1  
 1,4-Dichlorobenzene-d4  
 Concen: 0.400 ng  
 RT: 7.986 min Scan# 69  
 Delta R.T. 0.001 min  
 Lab File: BN022026.D  
 Acq: 06 Oct 2022 19:44

Instrument :  
 BNA\_N  
 ClientSampleId :  
 PB148152BSD

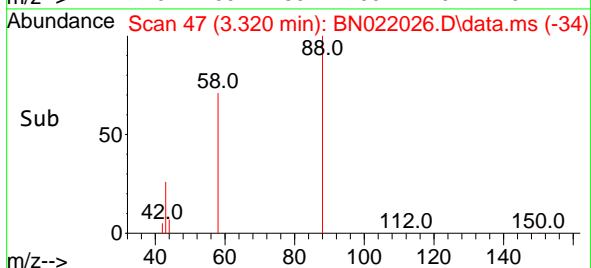
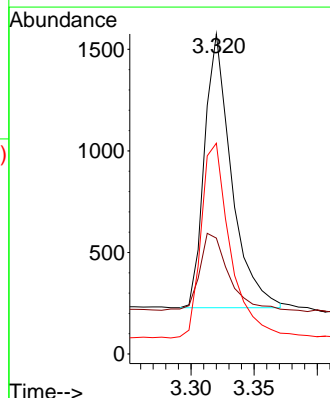
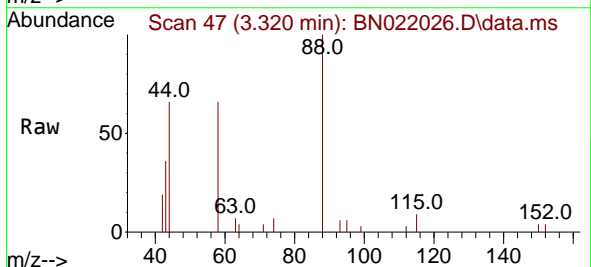


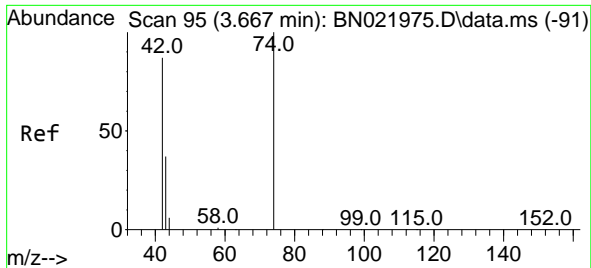
Tgt Ion:152 Resp: 4293  
 Ion Ratio Lower Upper  
 152 100  
 150 152.9 127.2 190.8  
 115 61.4 51.4 77.0



#2  
 1,4-Dioxane  
 Concen: 0.360 ng  
 RT: 3.320 min Scan# 47  
 Delta R.T. -0.007 min  
 Lab File: BN022026.D  
 Acq: 06 Oct 2022 19:44

Tgt Ion: 88 Resp: 2001  
 Ion Ratio Lower Upper  
 88 100  
 43 30.1 22.6 34.0  
 58 77.2 58.6 88.0

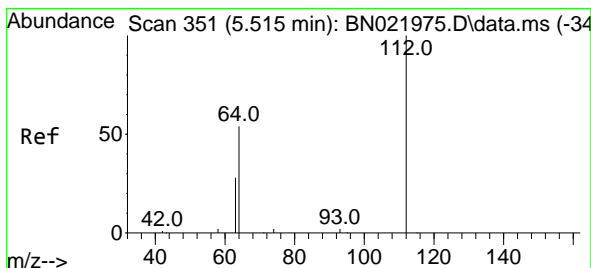
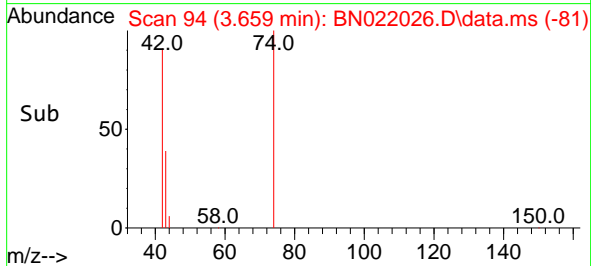
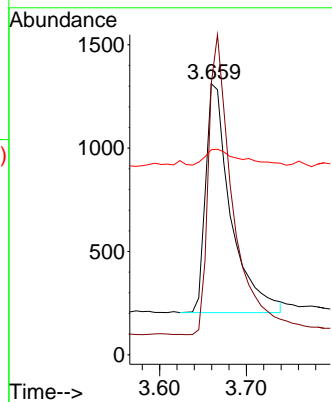
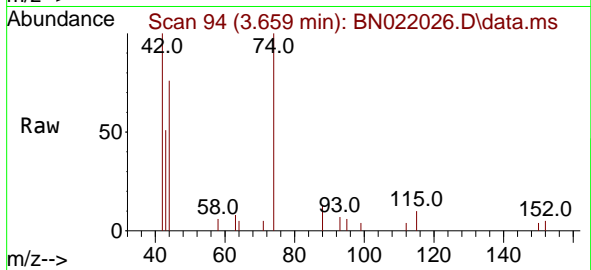




#3  
 n-Nitrosodimethylamine  
 Concen: 0.370 ng  
 RT: 3.659 min Scan# 94  
 Delta R.T. -0.007 min  
 Lab File: BN022026.D  
 Acq: 06 Oct 2022 19:44

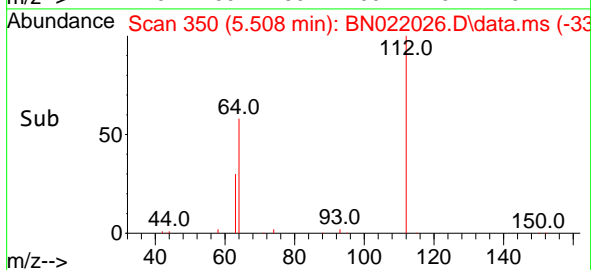
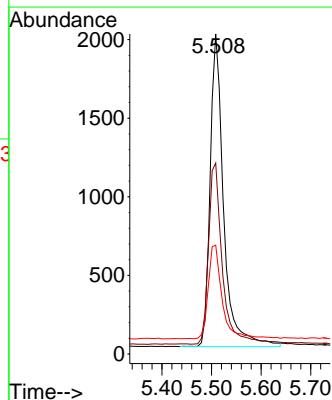
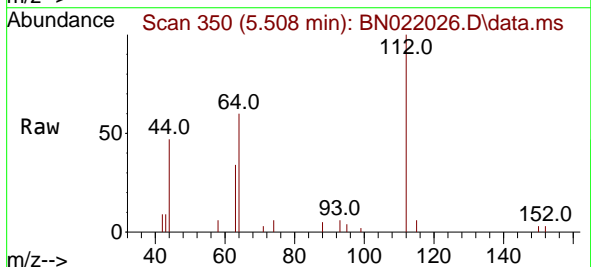
Instrument :  
 BNA\_N  
 ClientSampleId :  
 PB148152BSD

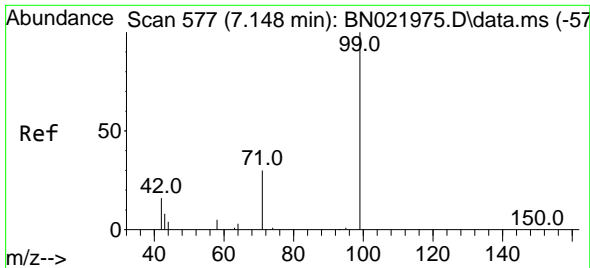
Tgt Ion: 42 Resp: 2233  
 Ion Ratio Lower Upper  
 42 100  
 74 126.5 101.6 152.4  
 44 9.2 10.4 15.6#



#4  
 2-Fluorophenol  
 Concen: 0.379 ng  
 RT: 5.508 min Scan# 350  
 Delta R.T. -0.007 min  
 Lab File: BN022026.D  
 Acq: 06 Oct 2022 19:44

Tgt Ion: 112 Resp: 3766  
 Ion Ratio Lower Upper  
 112 100  
 64 59.7 46.9 70.3  
 63 31.0 24.6 37.0

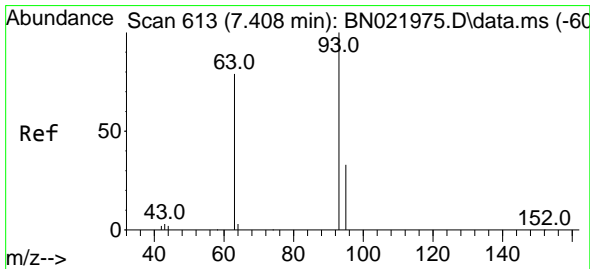
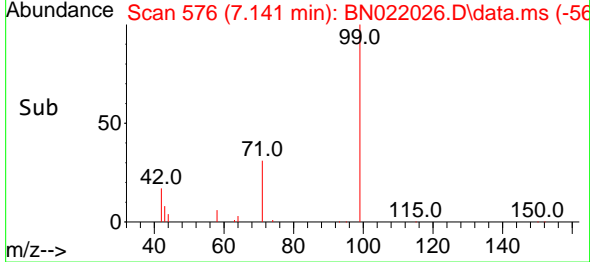
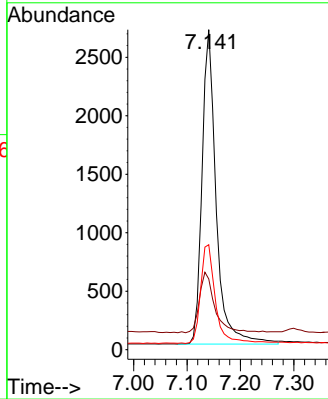
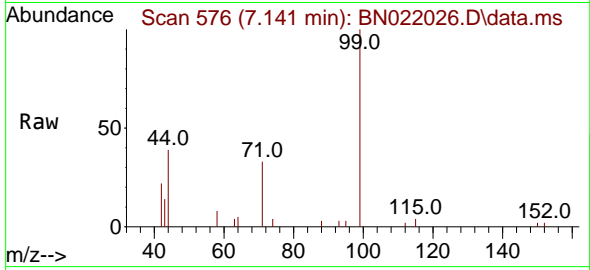




#5  
 Phenol-d6  
 Concen: 0.385 ng  
 RT: 7.141 min Scan# 51  
 Delta R.T. -0.007 min  
 Lab File: BN022026.D  
 Acq: 06 Oct 2022 19:44

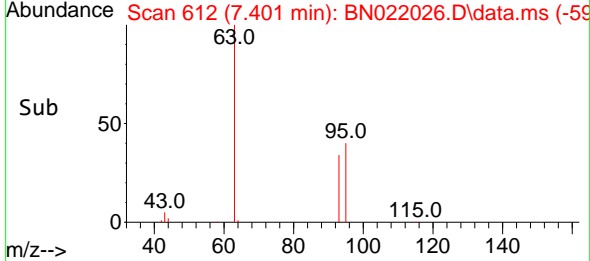
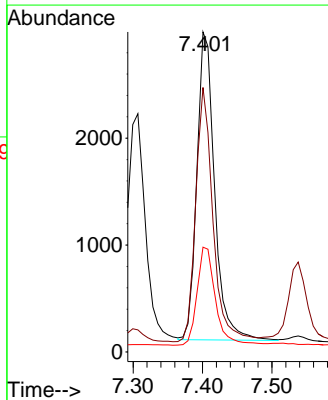
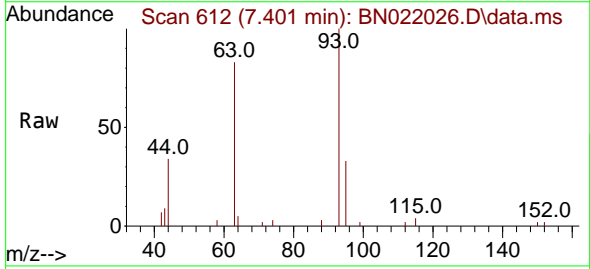
Instrument :  
 BNA\_N  
 ClientSampleId :  
 PB148152BSD

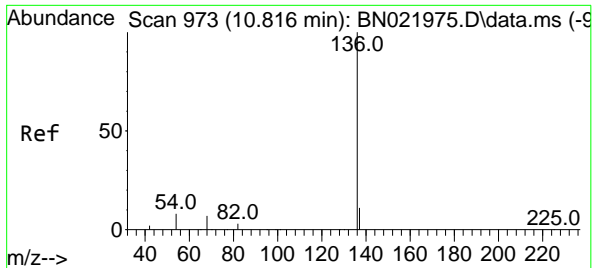
Tgt Ion	Resp	Lower	Upper
99	4967		
99	100		
42	20.6	15.9	23.9
71	32.8	25.6	38.4



#6  
 bis(2-Chloroethyl)ether  
 Concen: 0.375 ng  
 RT: 7.401 min Scan# 612  
 Delta R.T. -0.007 min  
 Lab File: BN022026.D  
 Acq: 06 Oct 2022 19:44

Tgt Ion	Resp	Lower	Upper
93	5119		
93	100		
63	80.4	64.8	97.2
95	33.0	26.6	40.0



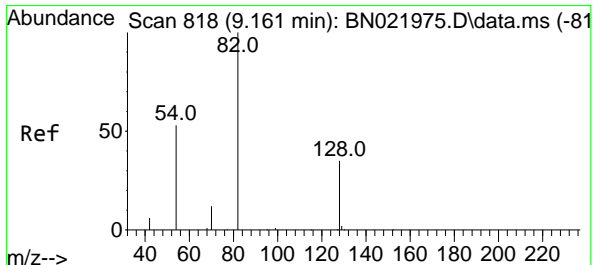
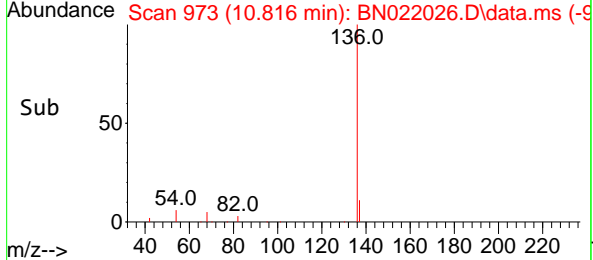
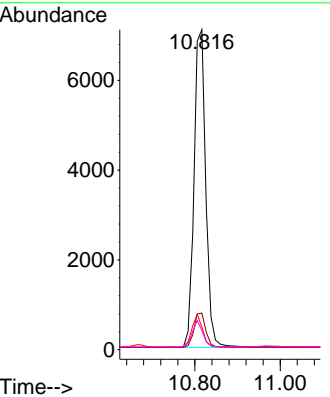
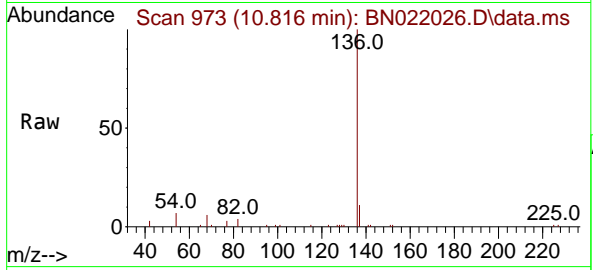


#7  
 Naphthalene-d8  
 Concen: 0.400 ng  
 RT: 10.816 min Scan# 91  
 Delta R.T. 0.000 min  
 Lab File: BN022026.D  
 Acq: 06 Oct 2022 19:44

Instrument : BNA\_N  
 ClientSampleId : PB148152BSD

Tgt Ion: 136 Resp: 13519

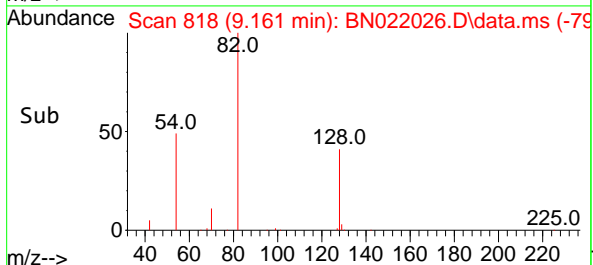
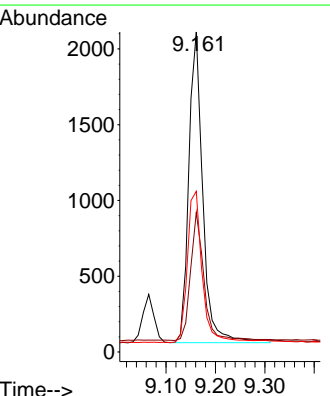
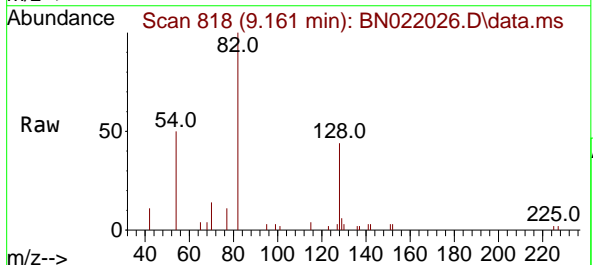
Ion	Ratio	Lower	Upper
136	100		
137	11.5	9.2	13.8
54	7.0	7.1	10.7#
68	6.0	6.2	9.2#

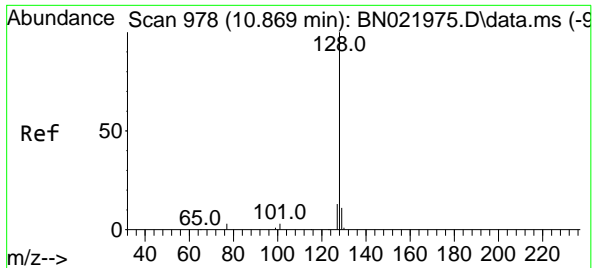


#8  
 Nitrobenzene-d5  
 Concen: 0.370 ng  
 RT: 9.161 min Scan# 818  
 Delta R.T. 0.000 min  
 Lab File: BN022026.D  
 Acq: 06 Oct 2022 19:44

Tgt Ion: 82 Resp: 4024

Ion	Ratio	Lower	Upper
82	100		
128	43.6	29.9	44.9
54	50.2	43.5	65.3



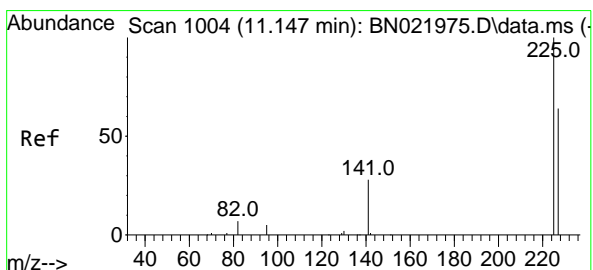
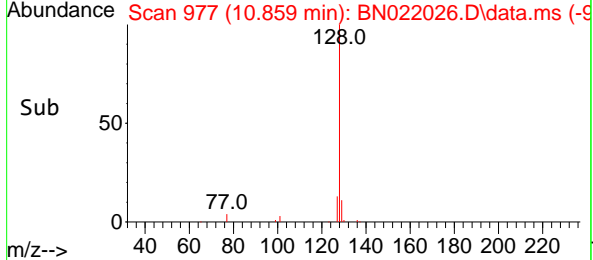
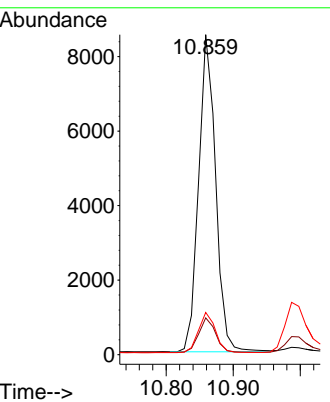
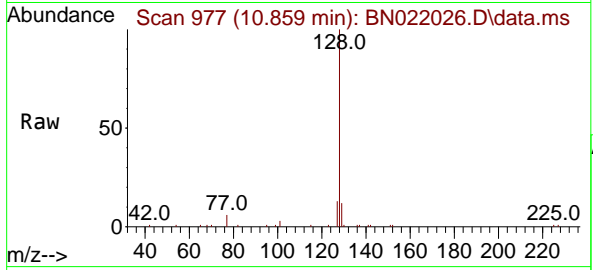


#9  
 Naphthalene  
 Concen: 0.368 ng  
 RT: 10.859 min Scan# 91  
 Delta R.T. -0.011 min  
 Lab File: BN022026.D  
 Acq: 06 Oct 2022 19:44

Instrument : BNA\_N  
 ClientSampleId : PB148152BSD

Tgt Ion:128 Resp: 15040

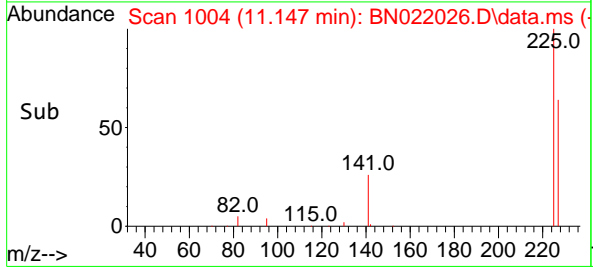
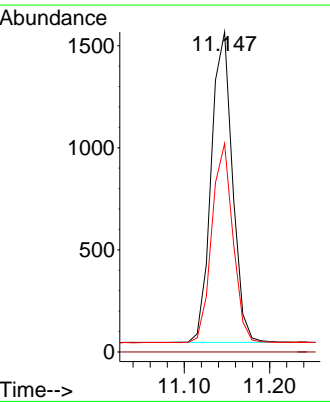
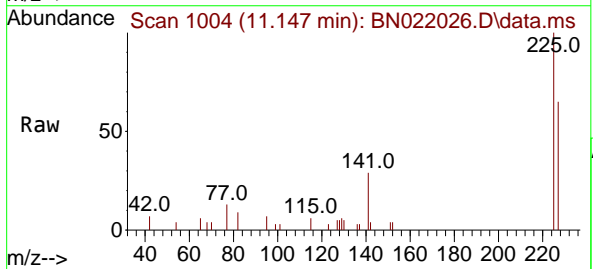
Ion	Ratio	Lower	Upper
128	100		
129	11.5	9.3	13.9
127	13.2	10.6	16.0

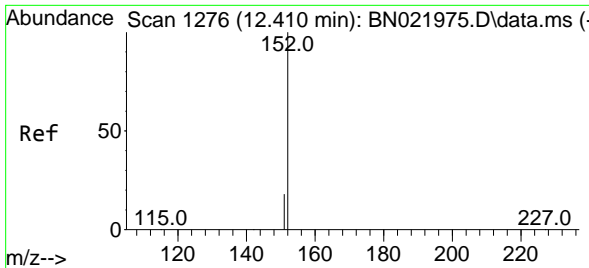


#10  
 Hexachlorobutadiene  
 Concen: 0.371 ng  
 RT: 11.147 min Scan# 1004  
 Delta R.T. 0.000 min  
 Lab File: BN022026.D  
 Acq: 06 Oct 2022 19:44

Tgt Ion:225 Resp: 2626

Ion	Ratio	Lower	Upper
225	100		
223	0.0	0.0	0.0
227	63.6	51.3	76.9

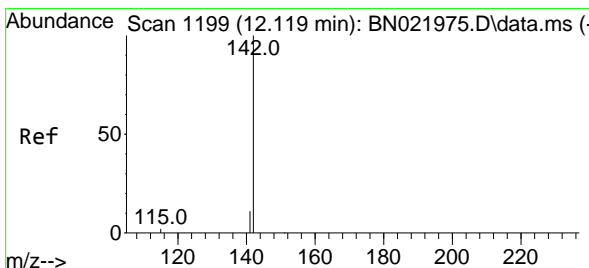
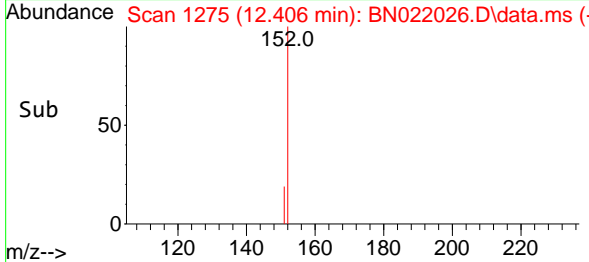
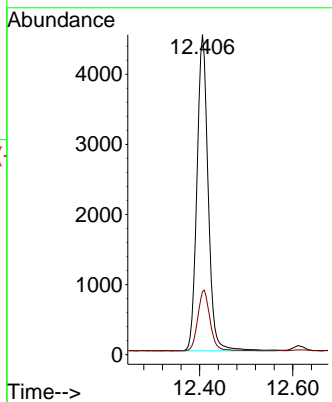
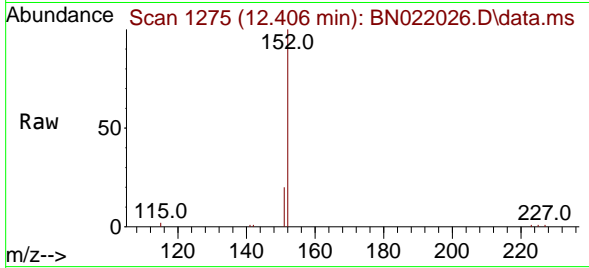




#11  
 2-Methylnaphthalene-d10  
 Concen: 0.373 ng  
 RT: 12.406 min Scan# 1197  
 Delta R.T. -0.004 min  
 Lab File: BN022026.D  
 Acq: 06 Oct 2022 19:44

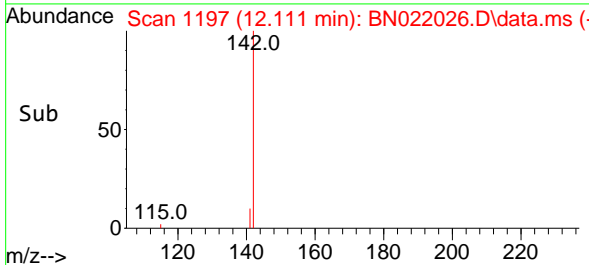
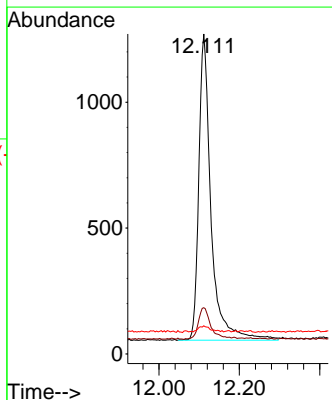
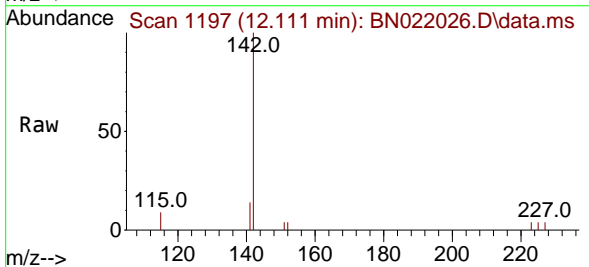
Instrument :  
 BNA\_N  
 ClientSampleId :  
 PB148152BSD

Tgt Ion:152 Resp: 9281  
 Ion Ratio Lower Upper  
 152 100  
 151 17.0 13.8 20.6

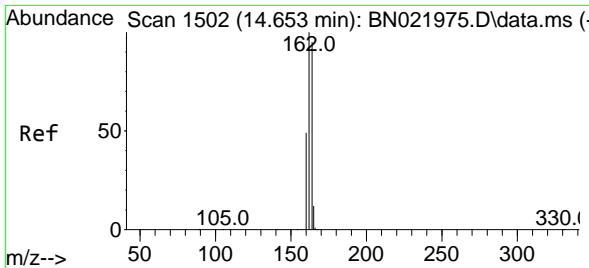


#12  
 2-Methylnaphthalene  
 Concen: 0.423 ng  
 RT: 12.111 min Scan# 1197  
 Delta R.T. -0.008 min  
 Lab File: BN022026.D  
 Acq: 06 Oct 2022 19:44

Tgt Ion:142 Resp: 2559  
 Ion Ratio Lower Upper  
 142 100  
 141 14.5 13.6 20.4  
 115 8.8 9.7 14.5#

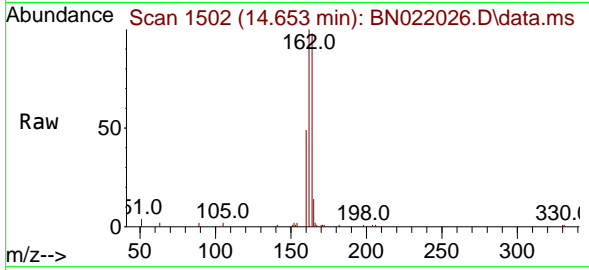






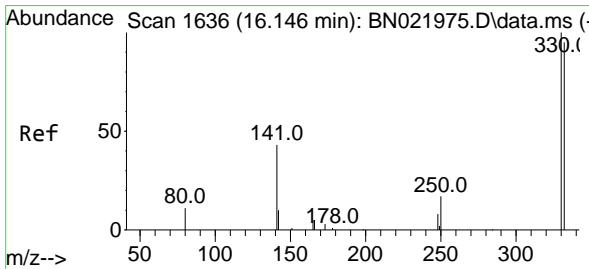
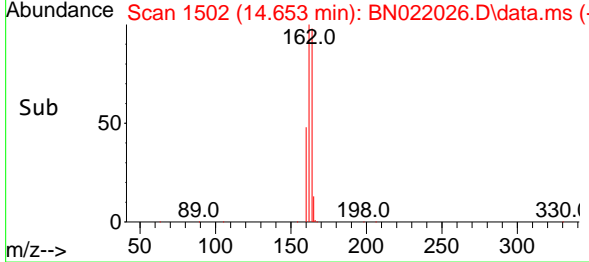
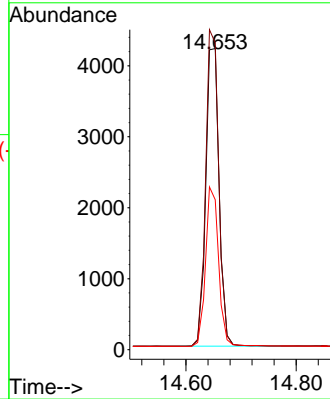
#13  
 Acenaphthene-d10  
 Concen: 0.400 ng  
 RT: 14.653 min Scan# 111  
 Delta R.T. 0.000 min  
 Lab File: BN022026.D  
 Acq: 06 Oct 2022 19:44

Instrument :  
 BNA\_N  
 ClientSampleId :  
 PB148152BSD

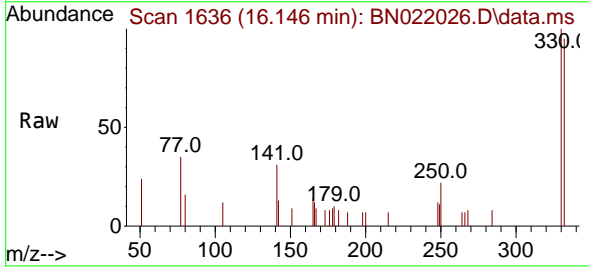


Tgt Ion:164 Resp: 7094

Ion	Ratio	Lower	Upper
164	100		
162	101.9	84.3	126.5
160	49.8	41.7	62.5

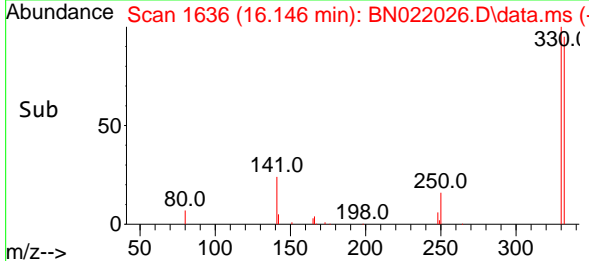
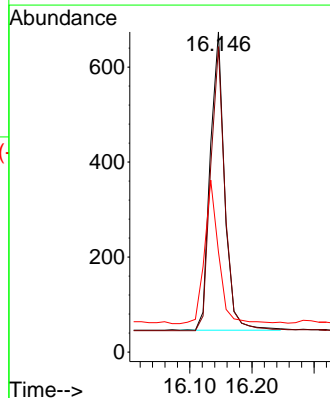


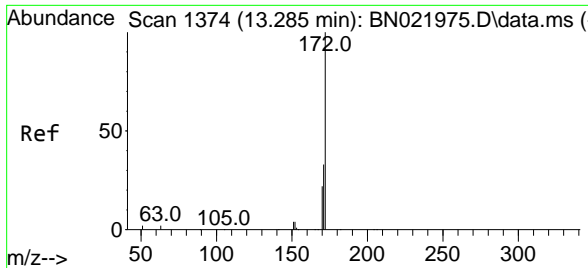
#14  
 2,4,6-Tribromophenol  
 Concen: 0.375 ng  
 RT: 16.146 min Scan# 1636  
 Delta R.T. 0.000 min  
 Lab File: BN022026.D  
 Acq: 06 Oct 2022 19:44



Tgt Ion:330 Resp: 1014

Ion	Ratio	Lower	Upper
330	100		
332	94.5	77.0	115.4
141	47.3	35.3	52.9

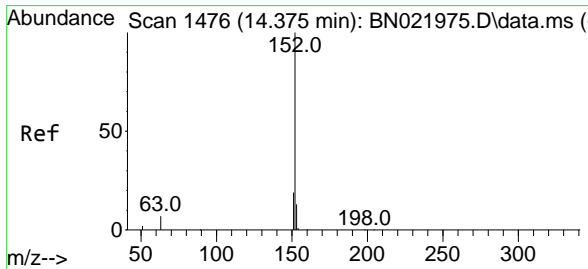
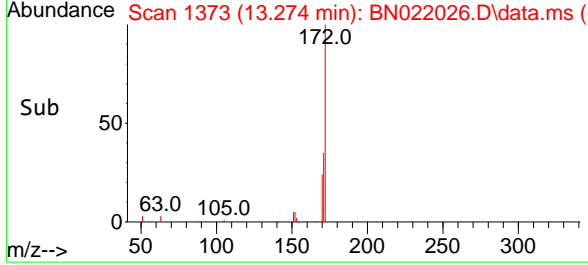
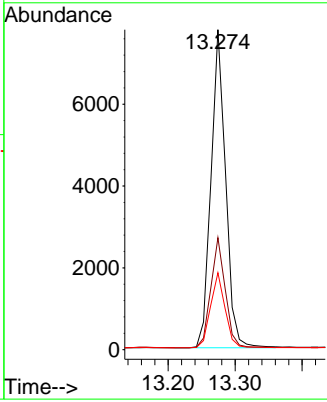
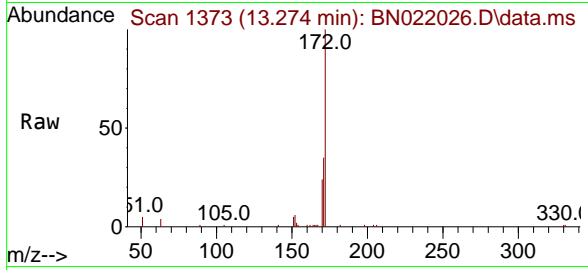




#15  
 2-Fluorobiphenyl  
 Concen: 0.380 ng  
 RT: 13.274 min Scan# 11  
 Delta R.T. -0.011 min  
 Lab File: BN022026.D  
 Acq: 06 Oct 2022 19:44

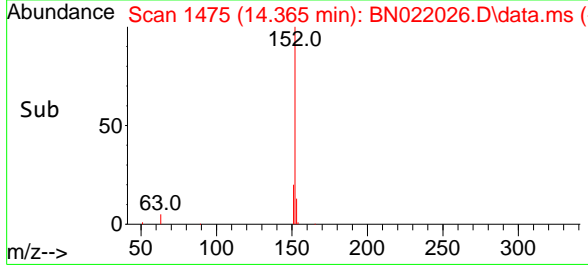
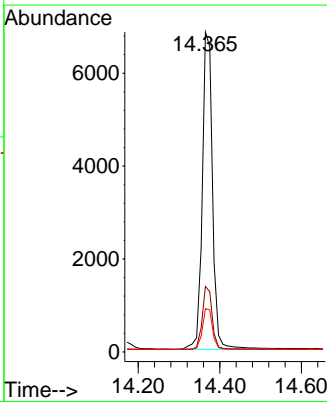
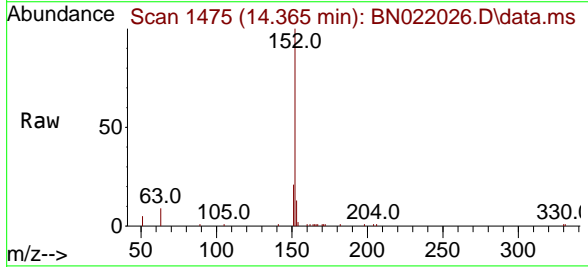
Instrument : BNA\_N  
 Client Sample Id : PB148152BSD

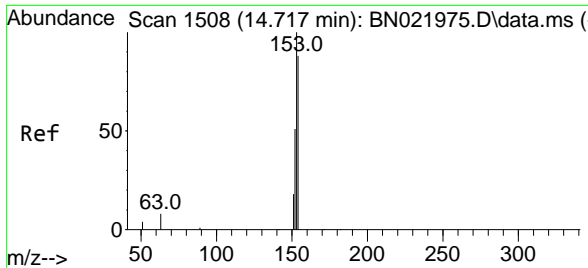
Tgt Ion	Resp	Lower	Upper
172	11768		
171	35.0	27.2	40.8
170	24.1	18.3	27.5



#16  
 Acenaphthylene  
 Concen: 0.354 ng  
 RT: 14.365 min Scan# 1475  
 Delta R.T. -0.011 min  
 Lab File: BN022026.D  
 Acq: 06 Oct 2022 19:44

Tgt Ion	Resp	Lower	Upper
152	11964		
151	19.4	15.5	23.3
153	13.0	10.4	15.6



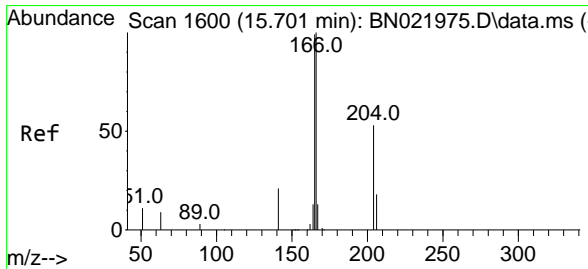
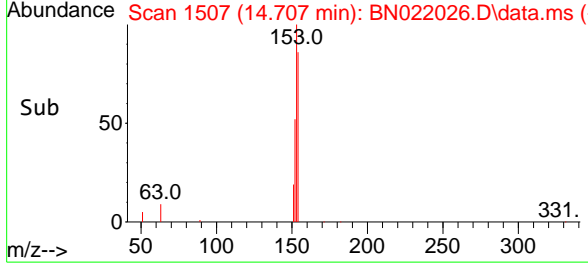
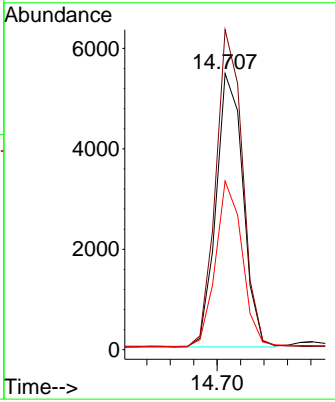
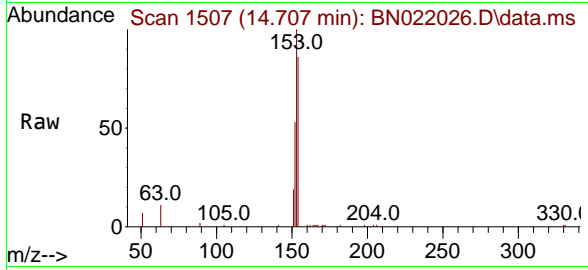


#17  
 Acenaphthene  
 Concen: 0.367 ng  
 RT: 14.707 min Scan# 11  
 Delta R.T. -0.011 min  
 Lab File: BN022026.D  
 Acq: 06 Oct 2022 19:44

Instrument : BNA\_N  
 ClientSampleId : PB148152BSD

Tgt Ion:154 Resp: 8718

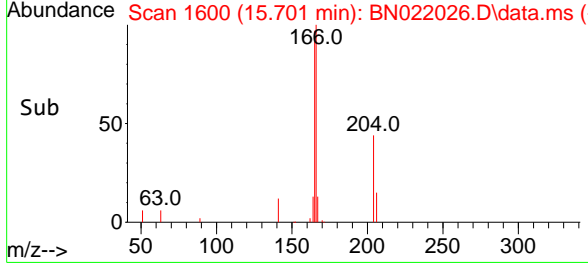
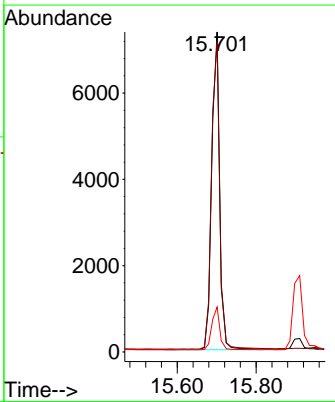
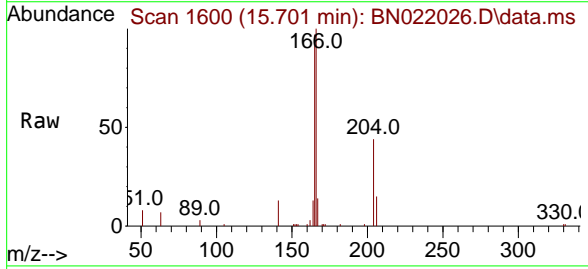
Ion	Ratio	Lower	Upper
154	100		
153	115.3	92.1	138.1
152	60.0	47.8	71.6

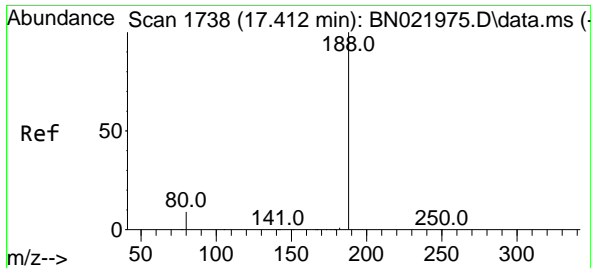


#18  
 Fluorene  
 Concen: 0.380 ng  
 RT: 15.701 min Scan# 1600  
 Delta R.T. 0.000 min  
 Lab File: BN022026.D  
 Acq: 06 Oct 2022 19:44

Tgt Ion:166 Resp: 10882

Ion	Ratio	Lower	Upper
166	100		
165	101.5	80.0	120.0
167	13.5	10.9	16.3

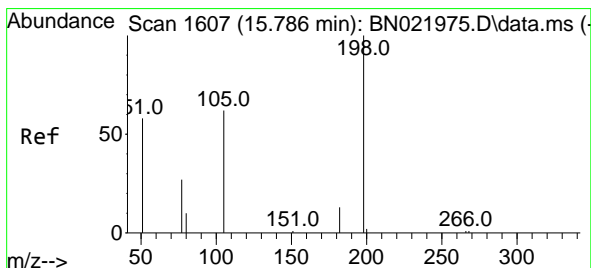
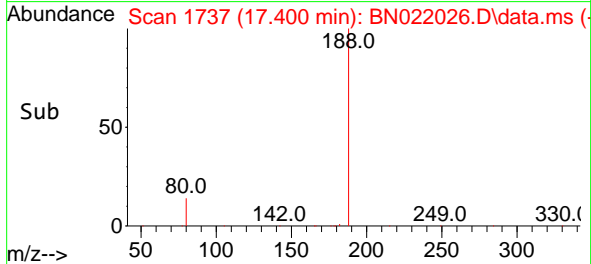
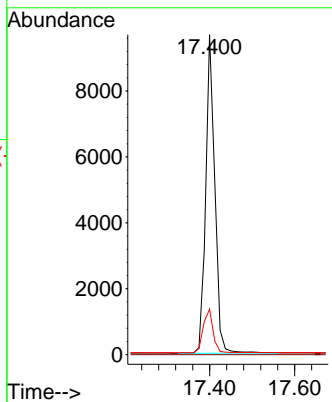
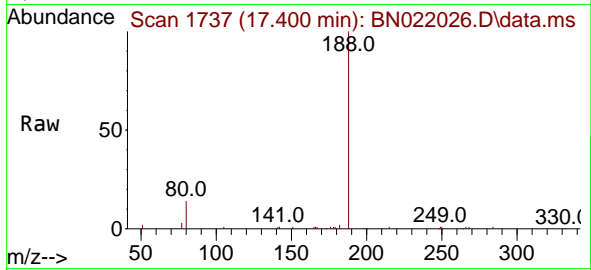




#19  
 Phenanthrene-d10  
 Concen: 0.400 ng  
 RT: 17.400 min Scan# 11  
 Delta R.T. -0.012 min  
 Lab File: BN022026.D  
 Acq: 06 Oct 2022 19:44

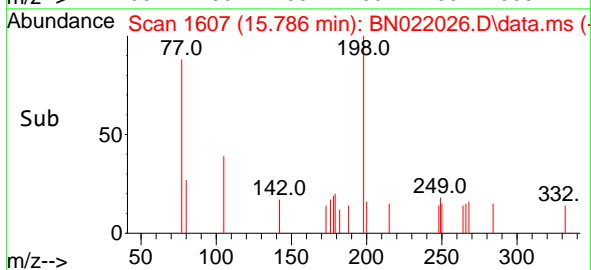
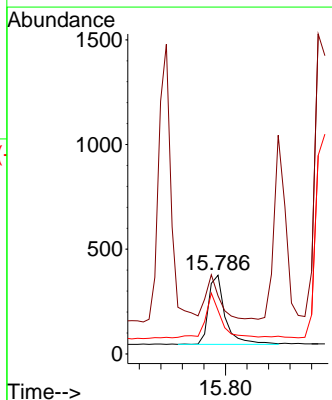
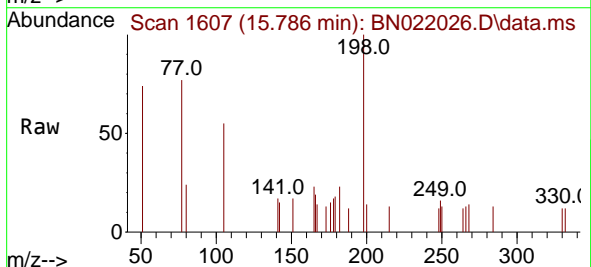
Instrument :  
 BNA\_N  
 ClientSampleId :  
 PB148152BSD

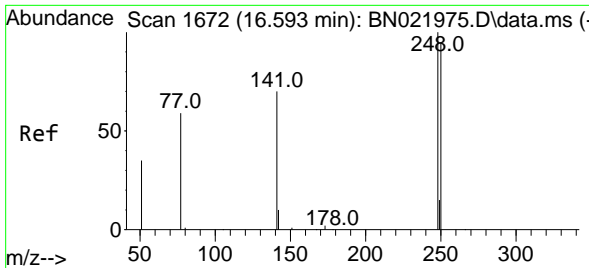
Tgt Ion:188 Resp: 14329  
 Ion Ratio Lower Upper  
 188 100  
 94 0.0 0.0 0.0  
 80 14.2 7.5 11.3#



#20  
 4,6-Dinitro-2-methylphenol  
 Concen: 0.442 ng  
 RT: 15.786 min Scan# 1607  
 Delta R.T. 0.000 min  
 Lab File: BN022026.D  
 Acq: 06 Oct 2022 19:44

Tgt Ion:198 Resp: 705  
 Ion Ratio Lower Upper  
 198 100  
 51 73.7 96.6 144.8#  
 105 55.3 64.4 96.6#

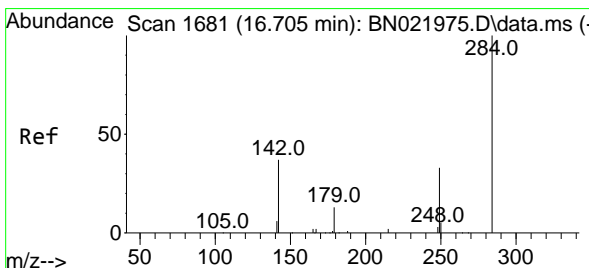
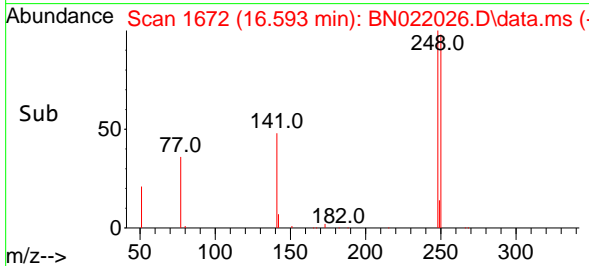
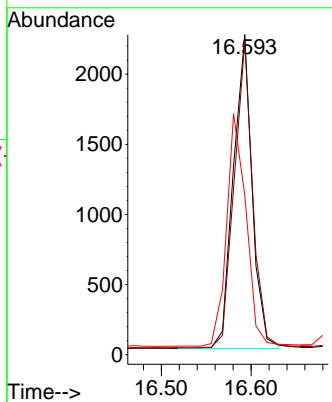
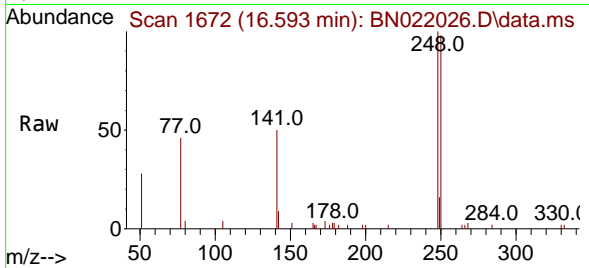




#21  
 4-Bromophenyl-phenylether  
 Concen: 0.371 ng  
 RT: 16.593 min Scan# 1672  
 Delta R.T. 0.000 min  
 Lab File: BN022026.D  
 Acq: 06 Oct 2022 19:44

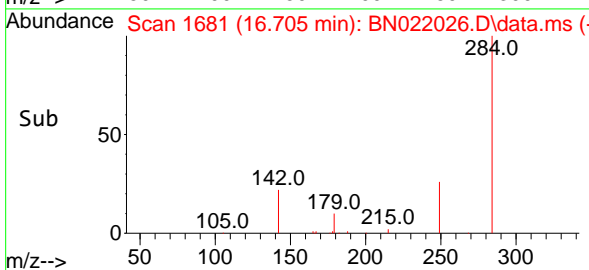
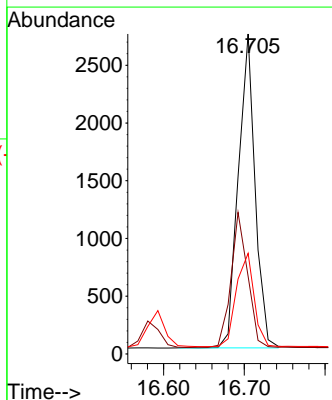
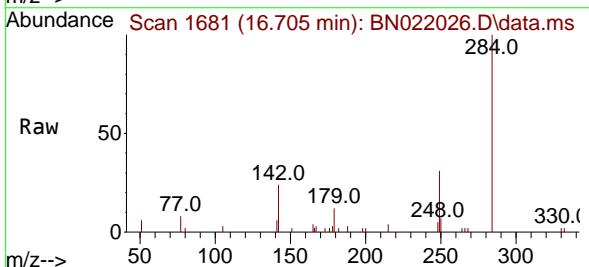
Instrument :  
 BNA\_N  
 ClientSampleId :  
 PB148152BSD

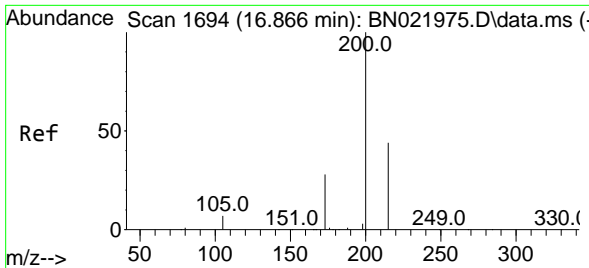
Tgt Ion:248 Resp: 3238  
 Ion Ratio Lower Upper  
 248 100  
 250 97.9 76.6 114.8  
 141 49.9 57.5 86.3#



#22  
 Hexachlorobenzene  
 Concen: 0.361 ng  
 RT: 16.705 min Scan# 1681  
 Delta R.T. 0.000 min  
 Lab File: BN022026.D  
 Acq: 06 Oct 2022 19:44

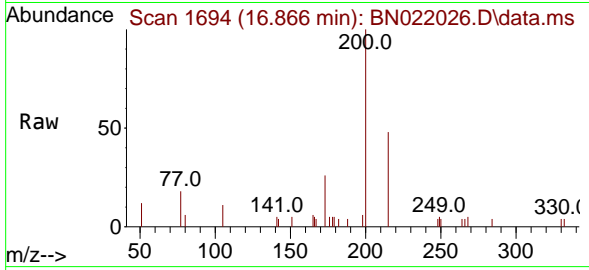
Tgt Ion:284 Resp: 3915  
 Ion Ratio Lower Upper  
 284 100  
 142 42.9 33.4 50.0  
 249 31.6 25.1 37.7





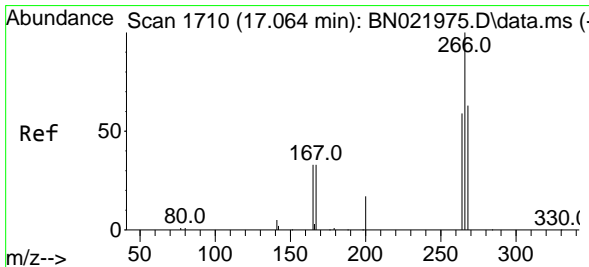
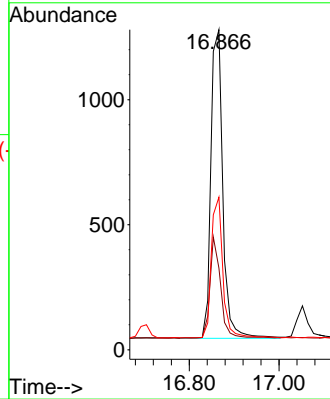
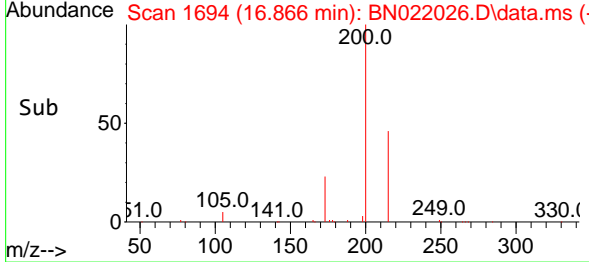
#23  
 Atrazine  
 Concen: 0.350 ng  
 RT: 16.866 min Scan# 11  
 Delta R.T. 0.000 min  
 Lab File: BN022026.D  
 Acq: 06 Oct 2022 19:44

Instrument :  
 BNA\_N  
 ClientSampleId :  
 PB148152BSD

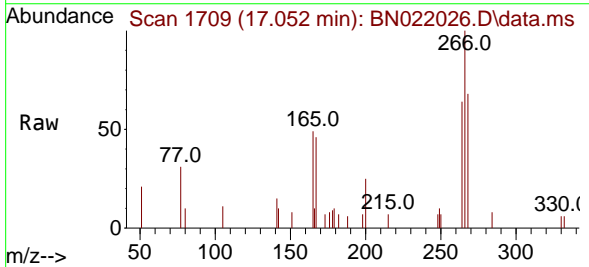


Tgt Ion: 200 Resp: 2268

Ion	Ratio	Lower	Upper
200	100		
173	25.5	24.6	36.8
215	47.7	37.1	55.7

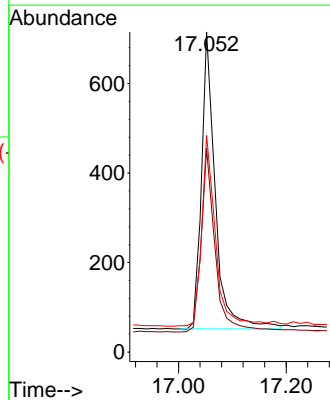
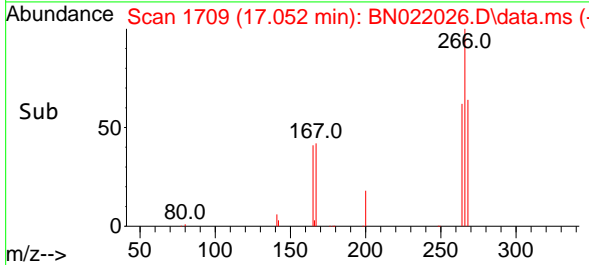


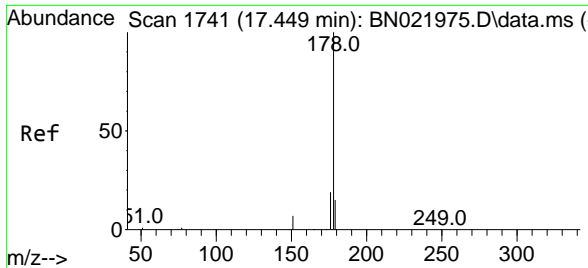
#24  
 Pentachlorophenol  
 Concen: 0.356 ng  
 RT: 17.052 min Scan# 1709  
 Delta R.T. -0.012 min  
 Lab File: BN022026.D  
 Acq: 06 Oct 2022 19:44



Tgt Ion: 266 Resp: 1186

Ion	Ratio	Lower	Upper
266	100		
264	62.4	49.8	74.6
268	65.8	49.6	74.4



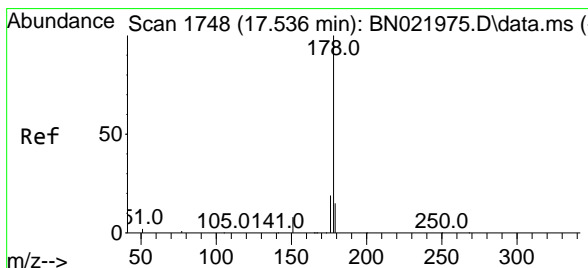
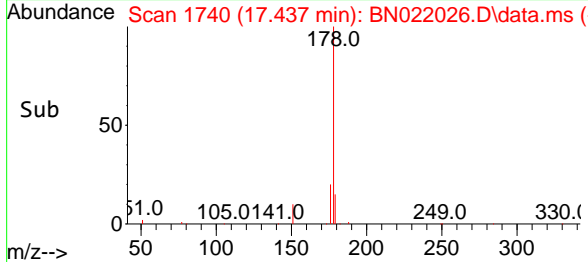
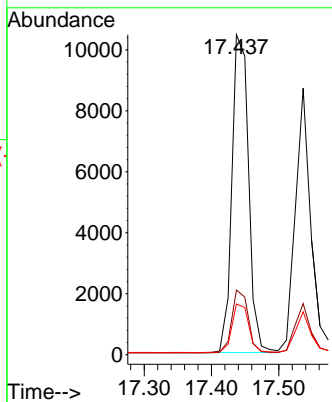
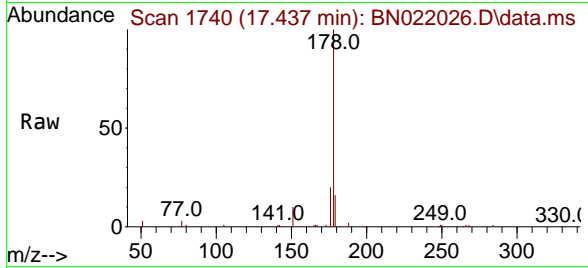


#25  
 Phenanthrene  
 Concen: 0.365 ng  
 RT: 17.437 min Scan# 1740  
 Delta R.T. -0.012 min  
 Lab File: BN022026.D  
 Acq: 06 Oct 2022 19:44

Instrument :  
 BNA\_N  
 ClientSampleId :  
 PB148152BSD

Tgt Ion:178 Resp: 17992

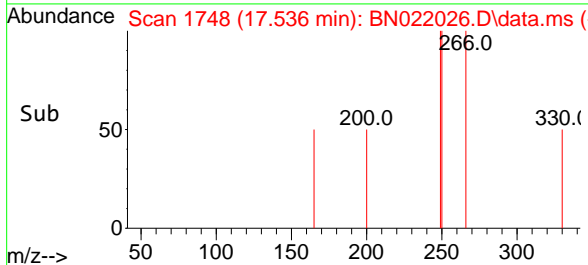
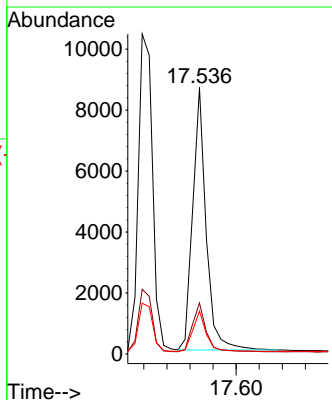
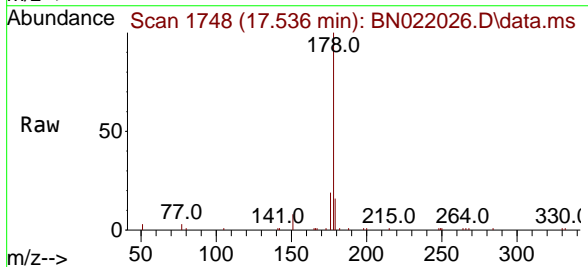
Ion	Ratio	Lower	Upper
178	100		
176	19.4	15.4	23.0
179	15.5	12.2	18.2

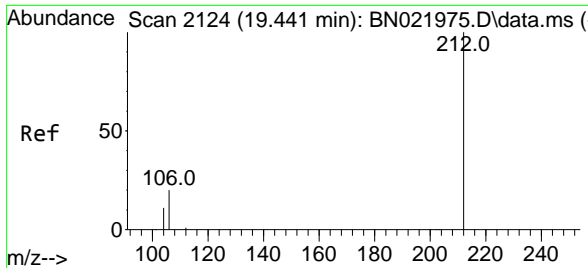


#26  
 Anthracene  
 Concen: 0.352 ng  
 RT: 17.536 min Scan# 1748  
 Delta R.T. 0.000 min  
 Lab File: BN022026.D  
 Acq: 06 Oct 2022 19:44

Tgt Ion:178 Resp: 13922

Ion	Ratio	Lower	Upper
178	100		
176	18.9	14.8	22.2
179	15.3	12.2	18.2



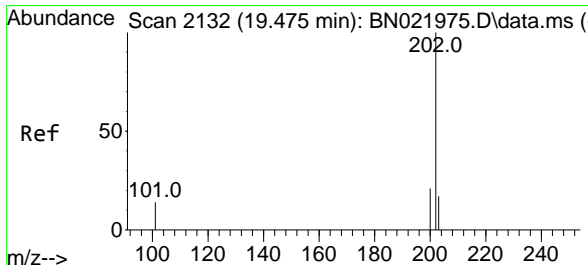
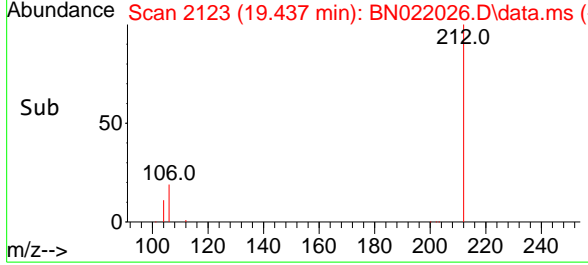
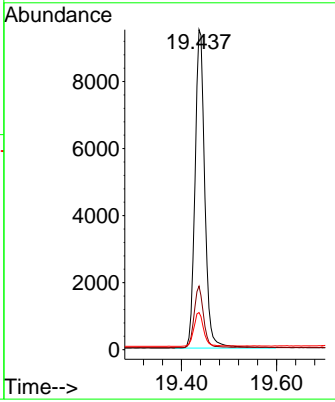
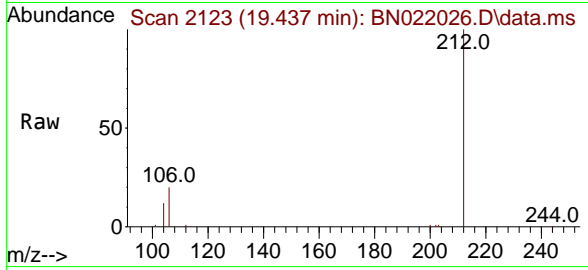


#27  
 Fluoranthene-d10  
 Concen: 0.356 ng  
 RT: 19.437 min Scan# 2112  
 Delta R.T. -0.004 min  
 Lab File: BN022026.D  
 Acq: 06 Oct 2022 19:44

Instrument : BNA\_N  
 ClientSampleId : PB148152BSD

Tgt Ion:212 Resp: 13547

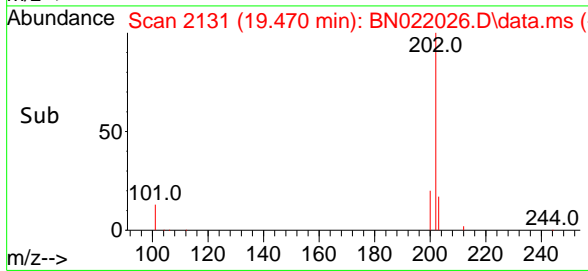
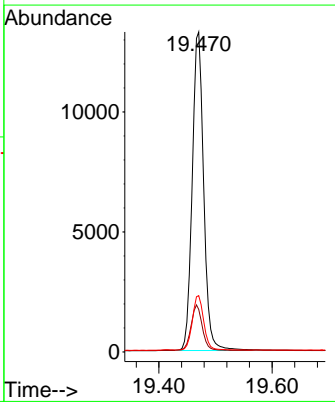
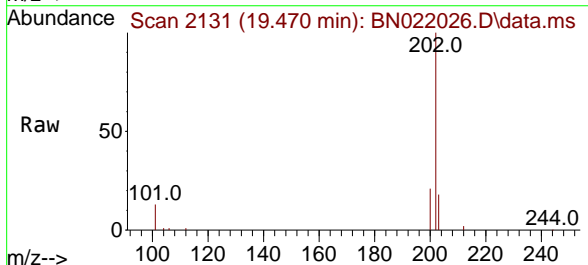
Ion	Ratio	Lower	Upper
212	100		
106	18.7	15.2	22.8
104	10.7	8.6	13.0



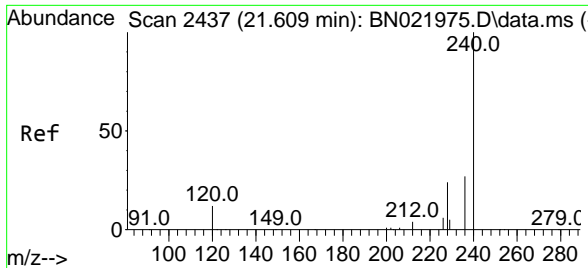
#28  
 Fluoranthene  
 Concen: 0.355 ng  
 RT: 19.470 min Scan# 2131  
 Delta R.T. -0.004 min  
 Lab File: BN022026.D  
 Acq: 06 Oct 2022 19:44

Tgt Ion:202 Resp: 18713

Ion	Ratio	Lower	Upper
202	100		
101	13.9	11.4	17.0
203	16.9	13.5	20.3





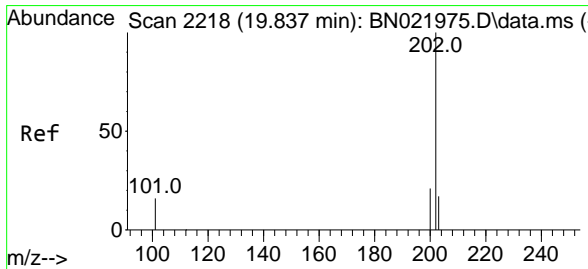
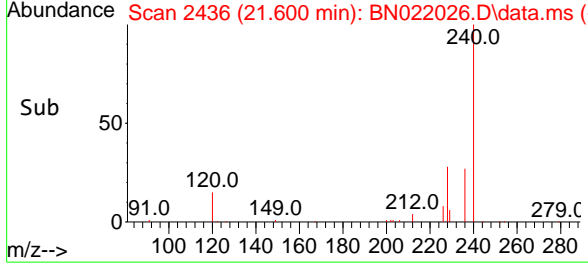
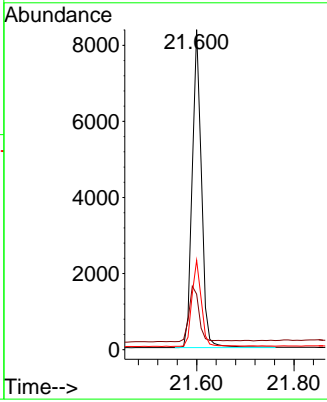
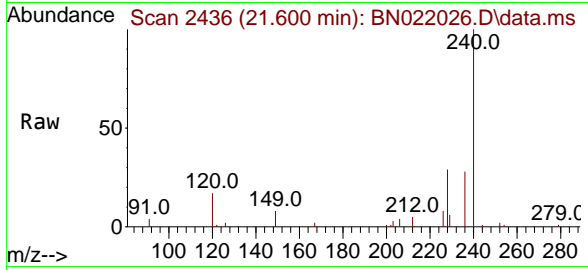


#29  
 Chrysene-d12  
 Concen: 0.400 ng  
 RT: 21.600 min Scan# 2436  
 Delta R.T. -0.009 min  
 Lab File: BN022026.D  
 Acq: 06 Oct 2022 19:44

Instrument : BNA\_N  
 ClientSampleId : PB148152BSD

Tgt Ion:240 Resp: 10990

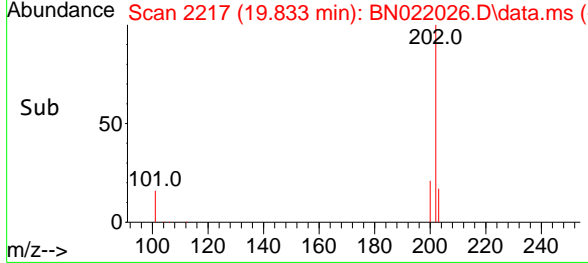
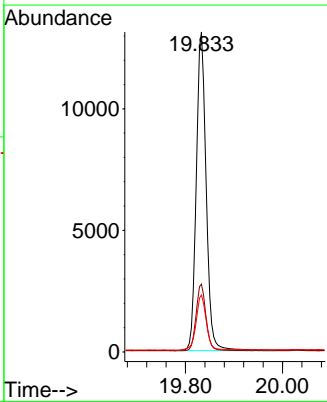
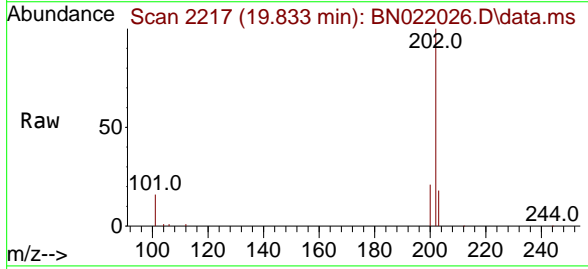
Ion	Ratio	Lower	Upper
240	100		
120	17.3	11.8	17.6
236	28.0	22.4	33.6

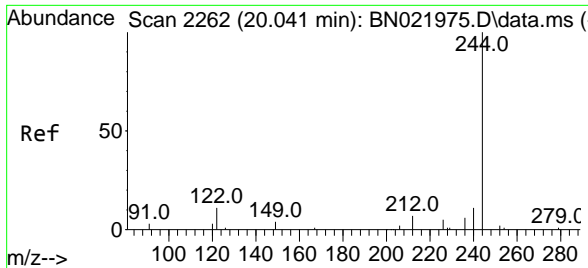


#30  
 Pyrene  
 Concen: 0.384 ng  
 RT: 19.833 min Scan# 2217  
 Delta R.T. -0.004 min  
 Lab File: BN022026.D  
 Acq: 06 Oct 2022 19:44

Tgt Ion:202 Resp: 18547

Ion	Ratio	Lower	Upper
202	100		
200	20.9	16.6	25.0
203	17.7	14.1	21.1

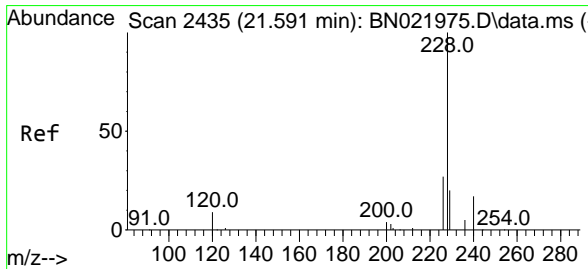
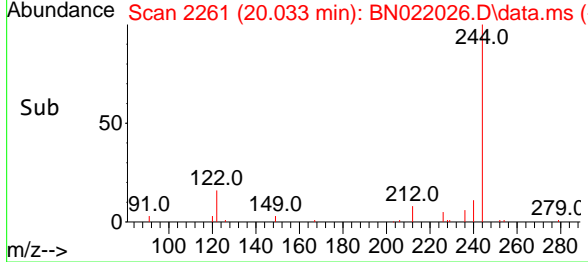
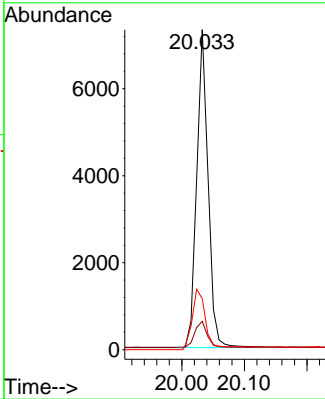
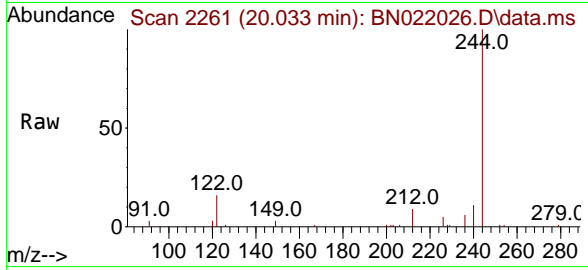




#31  
 Terphenyl-d14  
 Concen: 0.376 ng  
 RT: 20.033 min Scan# 21  
 Delta R.T. -0.009 min  
 Lab File: BN022026.D  
 Acq: 06 Oct 2022 19:44

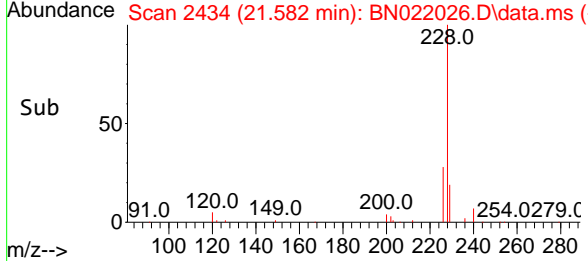
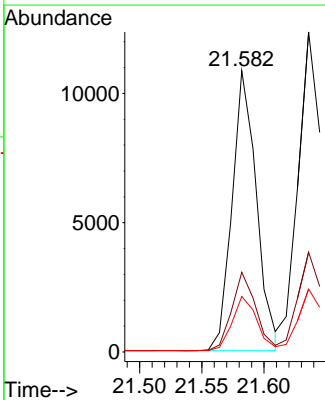
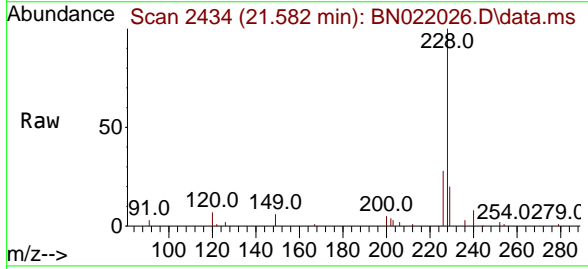
Instrument :  
 BNA\_N  
 ClientSampleId :  
 PB148152BSD

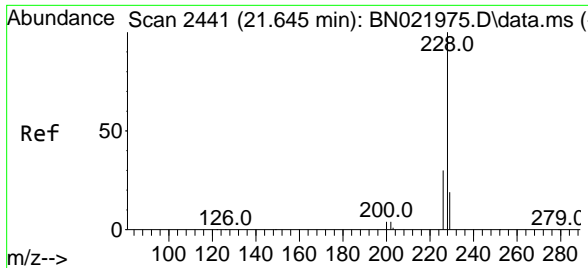
Tgt Ion	Resp	Lower	Upper
244	100		
212	8.8	6.5	9.7
122	16.0	9.1	13.7



#32  
 Benzo(a)anthracene  
 Concen: 0.356 ng  
 RT: 21.582 min Scan# 2434  
 Delta R.T. -0.009 min  
 Lab File: BN022026.D  
 Acq: 06 Oct 2022 19:44

Tgt Ion	Resp	Lower	Upper
228	100		
226	28.3	22.2	33.4
229	19.7	16.2	24.2



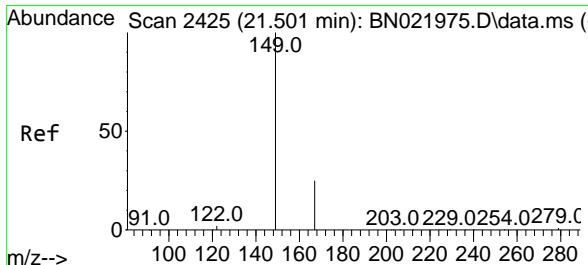
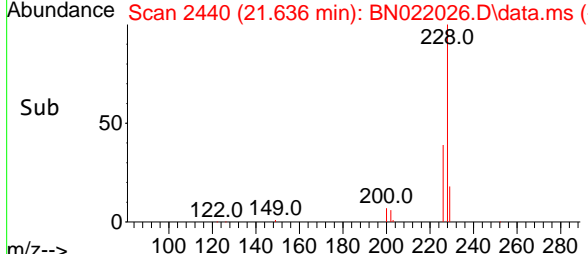
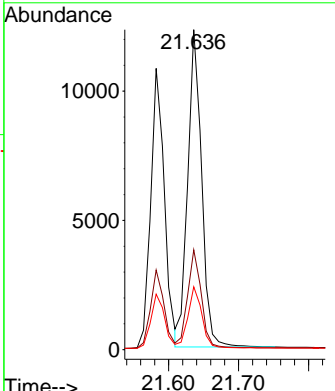
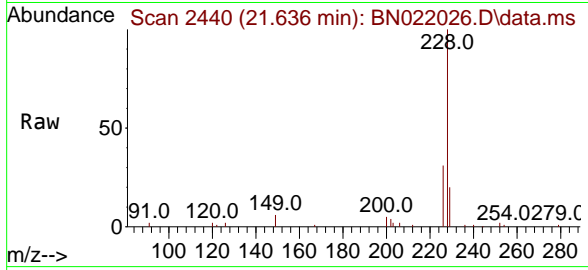


#33  
 Chrysene  
 Concen: 0.370 ng  
 RT: 21.636 min Scan# 2440  
 Delta R.T. -0.009 min  
 Lab File: BN022026.D  
 Acq: 06 Oct 2022 19:44

Instrument : BNA\_N  
 ClientSampleId : PB148152BSD

Tgt Ion:228 Resp: 16957

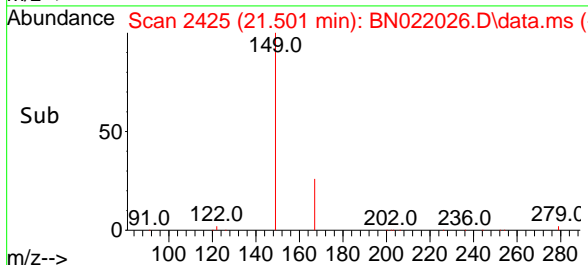
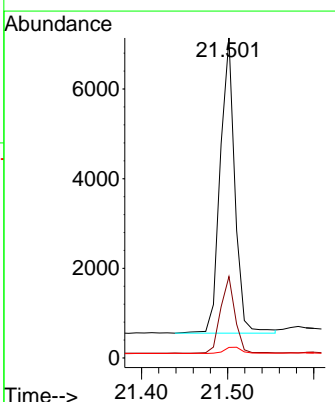
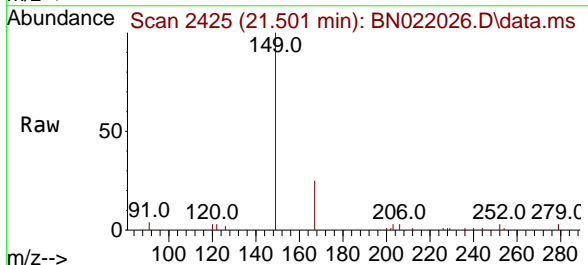
Ion	Ratio	Lower	Upper
228	100		
226	31.2	24.2	36.2
229	19.7	15.8	23.6

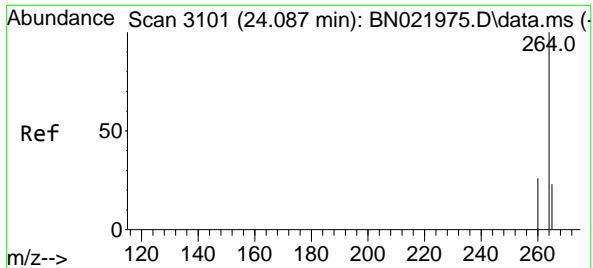


#34  
 Bis(2-ethylhexyl)phthalate  
 Concen: 0.392 ng  
 RT: 21.501 min Scan# 2425  
 Delta R.T. 0.000 min  
 Lab File: BN022026.D  
 Acq: 06 Oct 2022 19:44

Tgt Ion:149 Resp: 7764

Ion	Ratio	Lower	Upper
149	100		
167	25.4	20.2	30.4
279	2.5	2.3	3.5



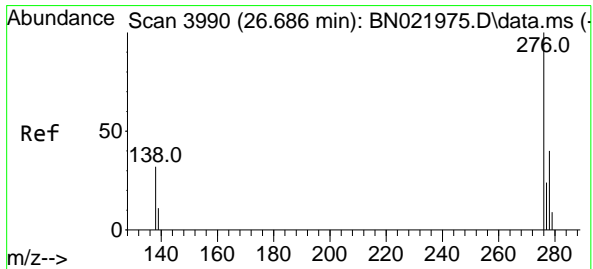
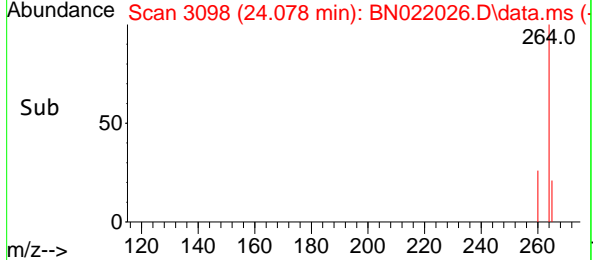
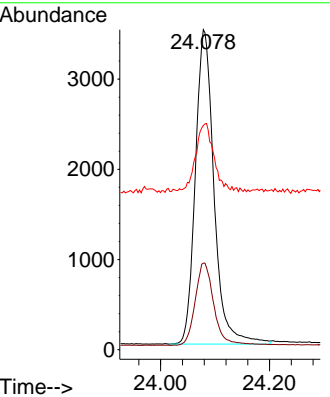
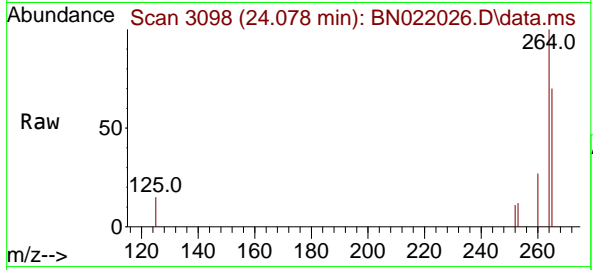


#35  
 Perylene-d12  
 Concen: 0.400 ng  
 RT: 24.078 min Scan# 3098  
 Delta R.T. -0.009 min  
 Lab File: BN022026.D  
 Acq: 06 Oct 2022 19:44

Instrument : BNA\_N  
 ClientSampleId : PB148152BSD

Tgt Ion:264 Resp: 8273

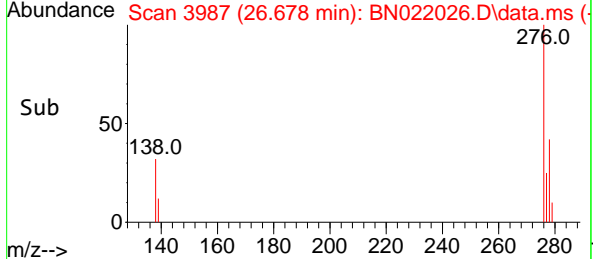
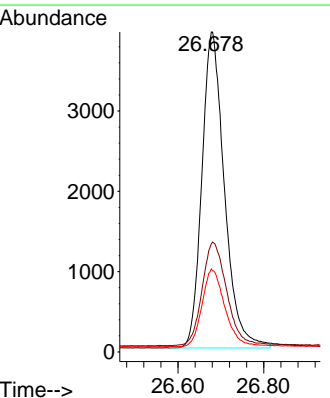
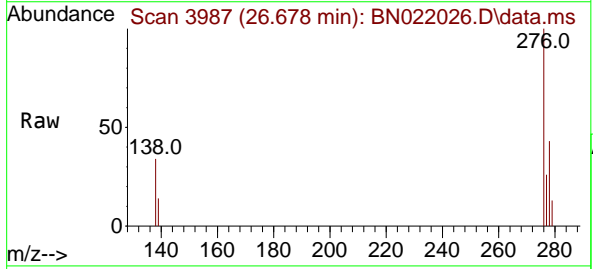
Ion	Ratio	Lower	Upper
264	100		
260	27.1	21.3	31.9
265	70.1	63.0	94.4

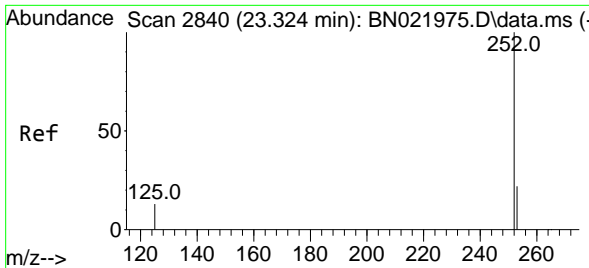


#36  
 Indeno(1,2,3-cd)pyrene  
 Concen: 0.344 ng  
 RT: 26.678 min Scan# 3987  
 Delta R.T. -0.009 min  
 Lab File: BN022026.D  
 Acq: 06 Oct 2022 19:44

Tgt Ion:276 Resp: 14381

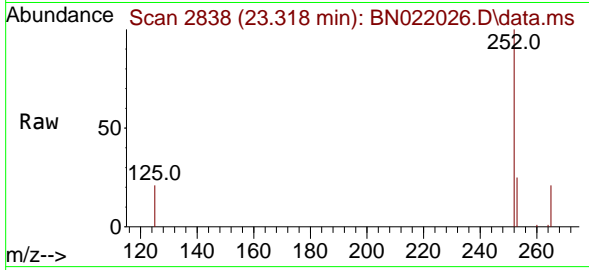
Ion	Ratio	Lower	Upper
276	100		
138	35.7	28.0	42.0
277	24.7	19.8	29.8



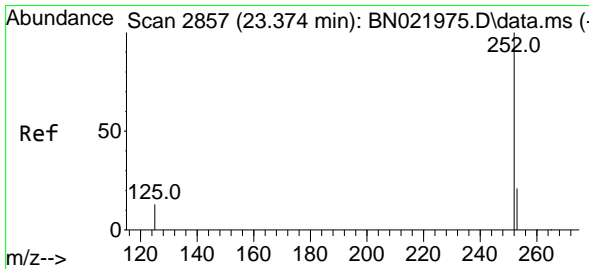
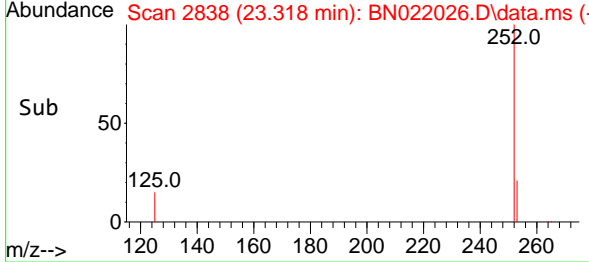
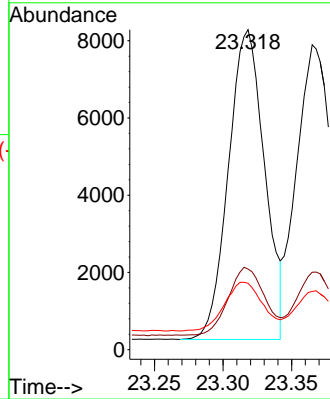


#37  
 Benzo(b)fluoranthene  
 Concen: 0.374 ng  
 RT: 23.318 min Scan# 2838  
 Delta R.T. -0.006 min  
 Lab File: BN022026.D  
 Acq: 06 Oct 2022 19:44

Instrument :  
 BNA\_N  
 ClientSampleId :  
 PB148152BSD

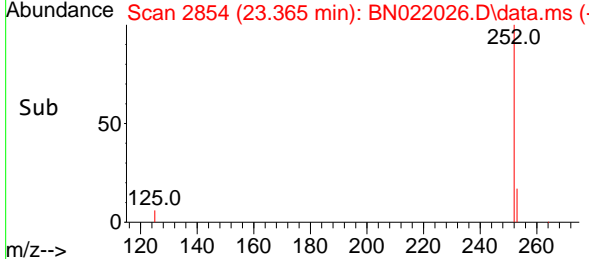
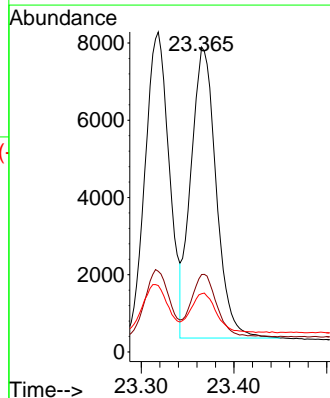
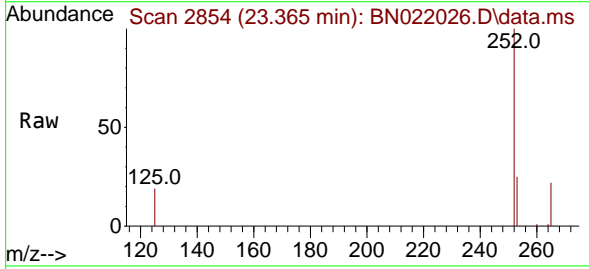


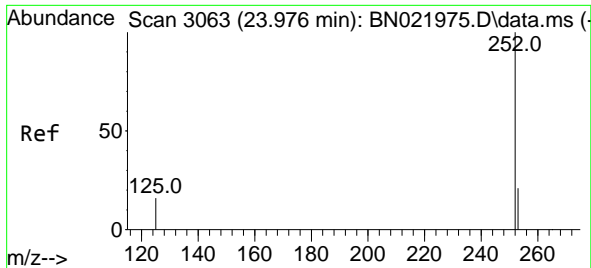
Tgt Ion:252 Resp: 14678  
 Ion Ratio Lower Upper  
 252 100  
 253 25.2 20.6 31.0  
 125 20.7 15.6 23.4



#38  
 Benzo(k)fluoranthene  
 Concen: 0.366 ng  
 RT: 23.365 min Scan# 2854  
 Delta R.T. -0.009 min  
 Lab File: BN022026.D  
 Acq: 06 Oct 2022 19:44

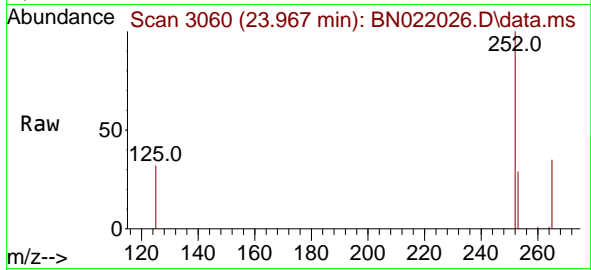
Tgt Ion:252 Resp: 14276  
 Ion Ratio Lower Upper  
 252 100  
 253 25.4 20.4 30.6  
 125 19.1 15.8 23.6



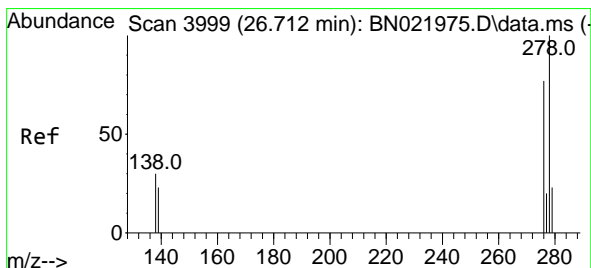
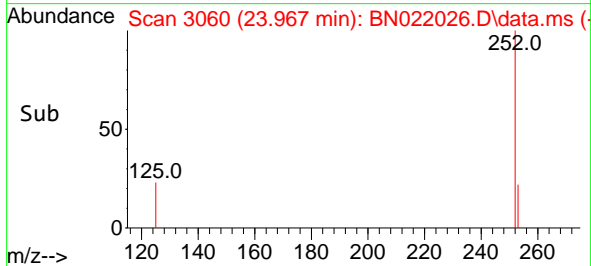
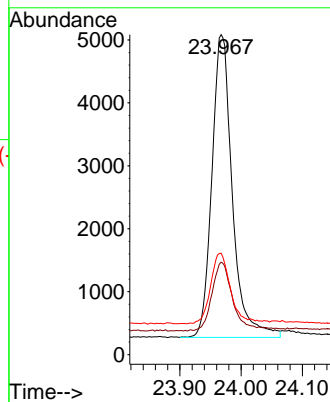


#39  
 Benzo(a)pyrene  
 Concen: 0.373 ng  
 RT: 23.967 min Scan# 3060  
 Delta R.T. -0.009 min  
 Lab File: BN022026.D  
 Acq: 06 Oct 2022 19:44

Instrument :  
 BNA\_N  
 ClientSampleId :  
 PB148152BSD

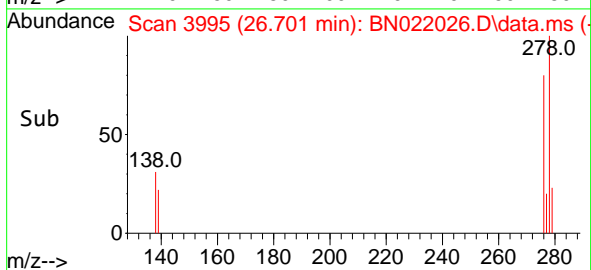
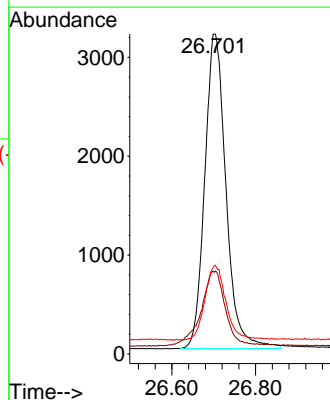
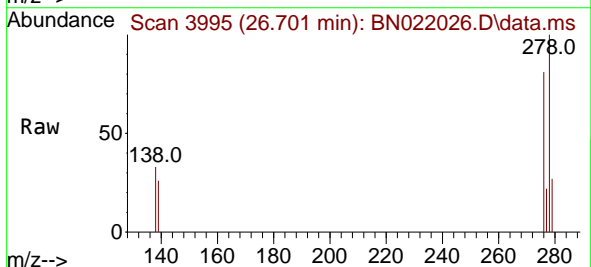


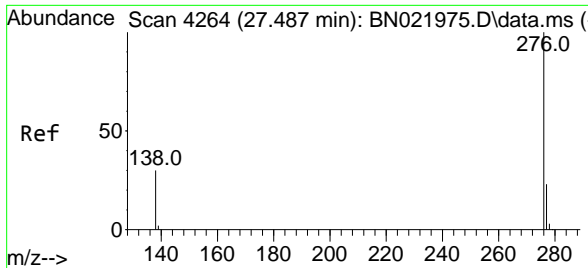
Tgt Ion:252 Resp: 11154  
 Ion Ratio Lower Upper  
 252 100  
 253 28.9 23.2 34.8  
 125 31.7 21.1 31.7#



#40  
 Dibenzo(a,h)anthracene  
 Concen: 0.336 ng  
 RT: 26.701 min Scan# 3995  
 Delta R.T. -0.012 min  
 Lab File: BN022026.D  
 Acq: 06 Oct 2022 19:44

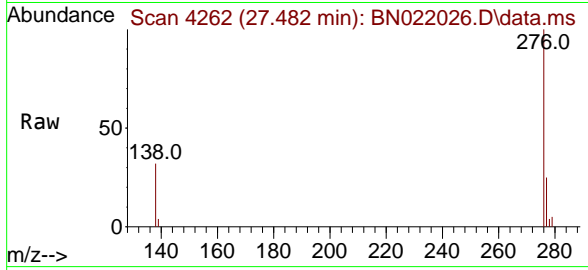
Tgt Ion:278 Resp: 11217  
 Ion Ratio Lower Upper  
 278 100  
 139 25.5 19.9 29.9  
 279 27.5 21.9 32.9





#41  
 Benzo(g,h,i)perylene  
 Concen: 0.321 ng  
 RT: 27.482 min Scan# 41  
 Delta R.T. -0.006 min  
 Lab File: BN022026.D  
 Acq: 06 Oct 2022 19:44

Instrument :  
 BNA\_N  
 ClientSampleId :  
 PB148152BSD



Tgt Ion: 276 Resp: 11536

Ion	Ratio	Lower	Upper
276	100		
277	25.1	20.0	30.0
138	31.9	25.2	37.8

