

Data Path : Z:\svoasrv\HPCHEM1\BNA_N\Data\BN112922\
 Data File : BN022928.D
 Acq On : 28 Nov 2022 22:26
 Operator : CG/JU
 Sample : PB149143BL
 Misc :
 ALS Vial : 19 Sample Multiplier: 1

Instrument :
 BNA_N
 ClientSampleId :
 PB149143BL

Quant Time: Nov 29 05:23:09 2022
 Quant Method : Z:\svoasrv\HPCHEM1\BNA_N\Methods\8270-SIM-BN112522.M
 Quant Title : ASP BNA STANDARDS FOR 5 POINT CALIBRATION
 QLast Update : Tue Nov 29 05:14:21 2022
 Response via : Initial Calibration

Compound	R.T.	QIon	Response	Conc Units	Dev(Min)
Internal Standards					
1) 1,4-Dichlorobenzene-d4	8.064	152	7556	0.400 ng	0.00
7) Naphthalene-d8	10.882	136	20134	0.400 ng	0.00
13) Acenaphthene-d10	14.698	164	10133	0.400 ng	0.00
19) Phenanthrene-d10	17.452	188	20084	0.400 ng	# 0.00
29) Chrysene-d12	21.634	240	10214	0.400 ng	0.00
35) Perylene-d12	24.120	264	7213	0.400 ng	# 0.00
System Monitoring Compounds					
4) 2-Fluorophenol	5.601	112	7467	0.380 ng	0.00
5) Phenol-d6	7.212	99	9543	0.382 ng	0.00
8) Nitrobenzene-d5	9.228	82	5447	0.348 ng	0.00
11) 2-Methylnaphthalene-d10	12.469	152	12817	0.294 ng	0.00
14) 2,4,6-Tribromophenol	16.186	330	1382	0.282 ng	0.00
15) 2-Fluorobiphenyl	13.330	172	18090	0.390 ng	0.00
27) Fluoranthene-d10	19.473	212	16459	0.302 ng	0.00
31) Terphenyl-d14	20.067	244	11154	0.465 ng	0.00

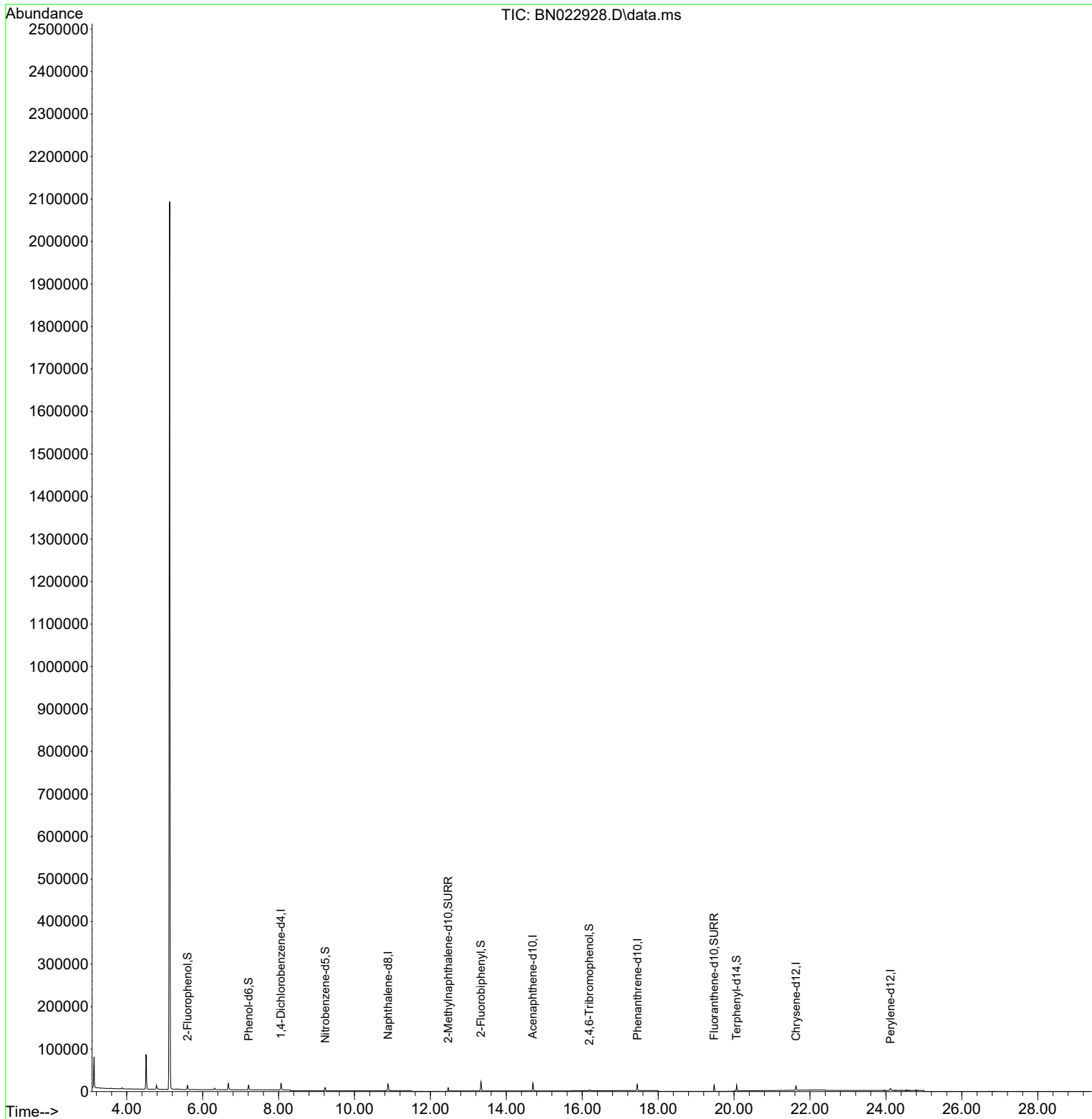
Target Compounds Qvalue

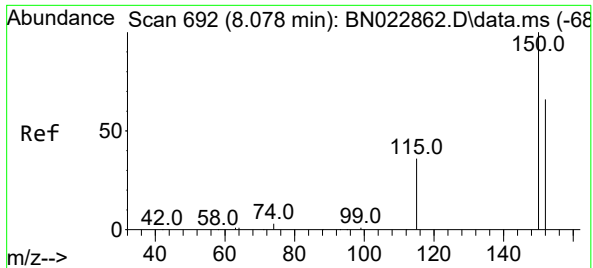
(#) = qualifier out of range (m) = manual integration (+) = signals summed

Data Path : Z:\svoasrv\HPCHEM1\BNA_N\Data\BN112922\
 Data File : BN022928.D
 Acq On : 28 Nov 2022 22:26
 Operator : CG/JU
 Sample : PB149143BL
 Misc :
 ALS Vial : 19 Sample Multiplier: 1

Instrument :
 BNA_N
 ClientSampleId :
 PB149143BL

Quant Time: Nov 29 05:23:09 2022
 Quant Method : Z:\svoasrv\HPCHEM1\BNA_N\Methods\8270-SIM-BN112522.M
 Quant Title : ASP BNA STANDARDS FOR 5 POINT CALIBRATION
 QLast Update : Tue Nov 29 05:14:21 2022
 Response via : Initial Calibration



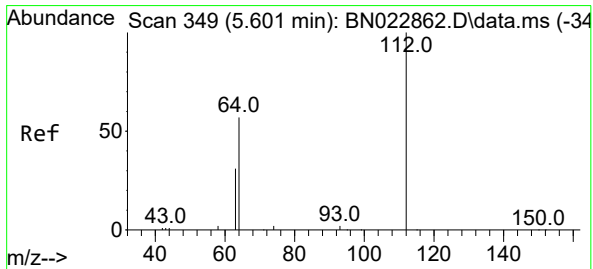
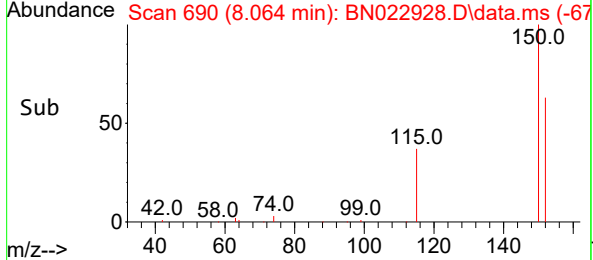
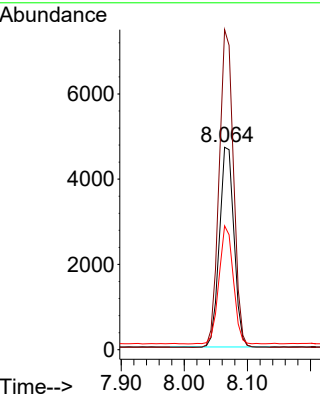
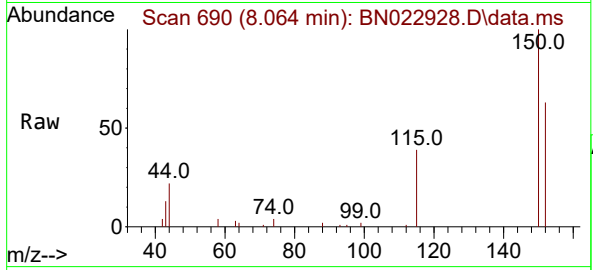


#1
 1,4-Dichlorobenzene-d4
 Concen: 0.400 ng
 RT: 8.064 min Scan# 692
 Delta R.T. -0.000 min
 Lab File: BN022928.D
 Acq: 28 Nov 2022 22:26

Instrument : BNA_N
 Client Sample Id : PB149143BL

Tgt Ion:152 Resp: 7556

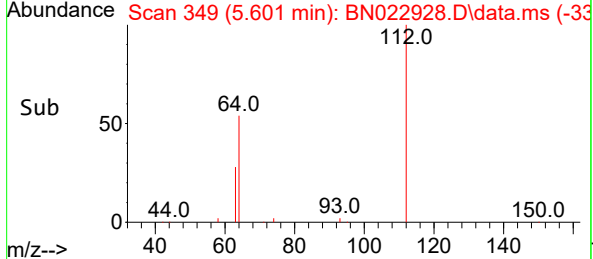
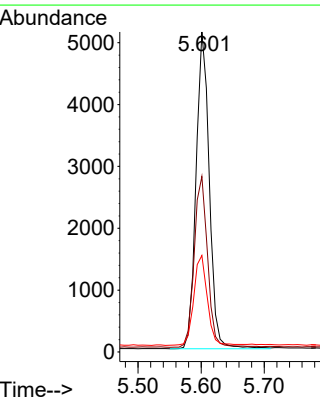
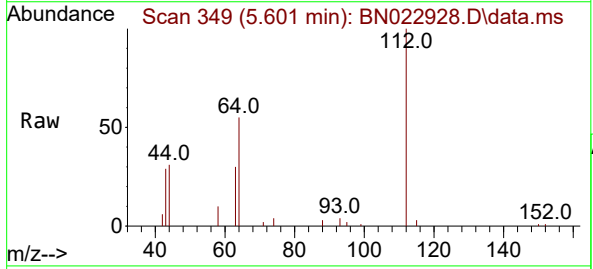
Ion	Ratio	Lower	Upper
152	100		
150	158.1	121.2	181.8
115	61.2	46.2	69.4

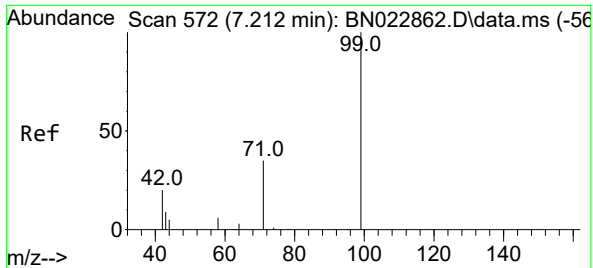


#4
 2-Fluorophenol
 Concen: 0.380 ng
 RT: 5.601 min Scan# 349
 Delta R.T. -0.000 min
 Lab File: BN022928.D
 Acq: 28 Nov 2022 22:26

Tgt Ion:112 Resp: 7467

Ion	Ratio	Lower	Upper
112	100		
64	54.6	43.4	65.2
63	29.0	23.4	35.2

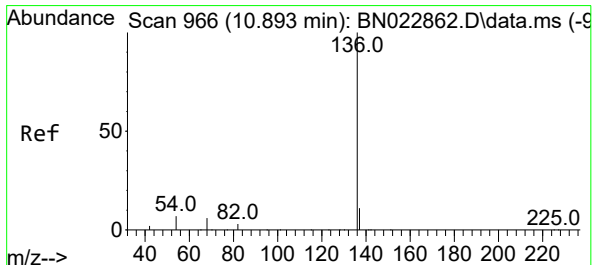
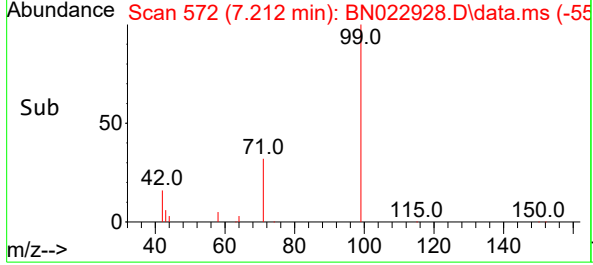
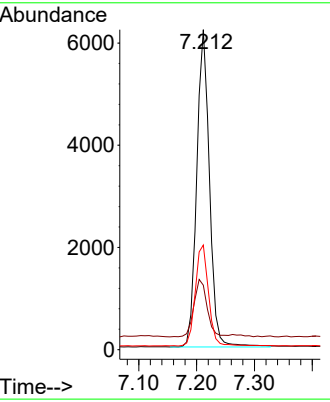
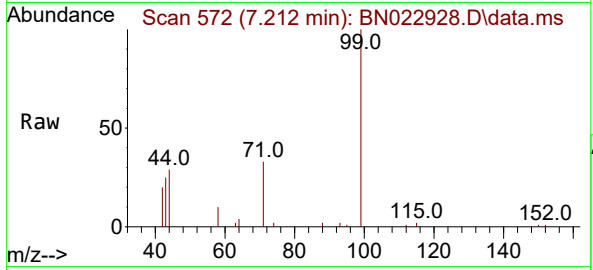




#5
 Phenol-d6
 Concen: 0.382 ng
 RT: 7.212 min Scan# 51
 Delta R.T. -0.000 min
 Lab File: BN022928.D
 Acq: 28 Nov 2022 22:26

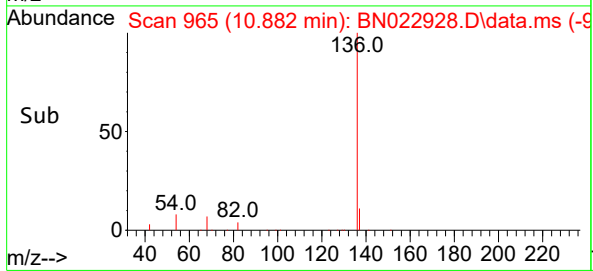
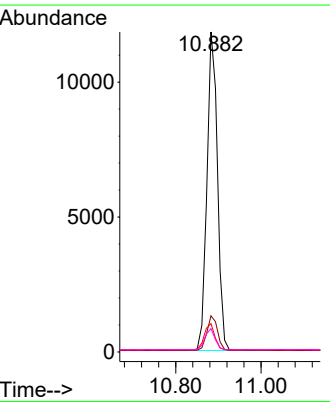
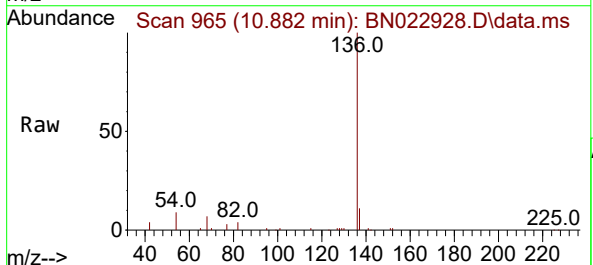
Instrument :
 BNA_N
 ClientSampleId :
 PB149143BL

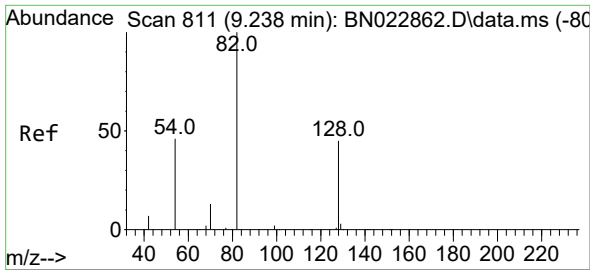
Tgt Ion	Resp	Lower	Upper
99	9543		
42	18.9	16.0	24.0
71	33.1	26.8	40.2



#7
 Naphthalene-d8
 Concen: 0.400 ng
 RT: 10.882 min Scan# 965
 Delta R.T. -0.000 min
 Lab File: BN022928.D
 Acq: 28 Nov 2022 22:26

Tgt Ion	Resp	Lower	Upper
136	20134		
137	11.3	9.0	13.4
54	8.8	6.6	9.8
68	7.3	5.5	8.3

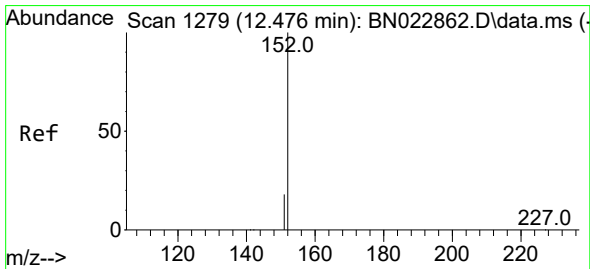
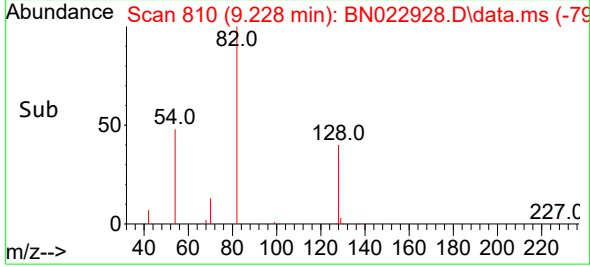
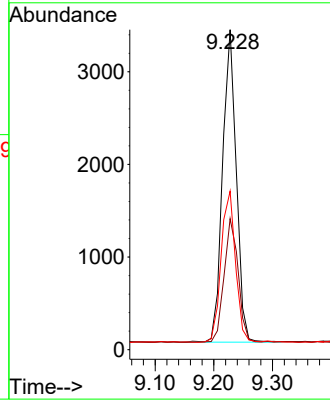
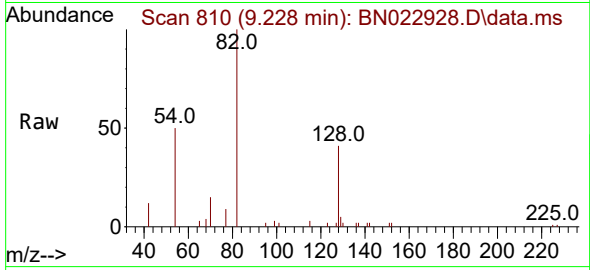




#8
 Nitrobenzene-d5
 Concen: 0.348 ng
 RT: 9.228 min Scan# 811
 Delta R.T. -0.000 min
 Lab File: BN022928.D
 Acq: 28 Nov 2022 22:26

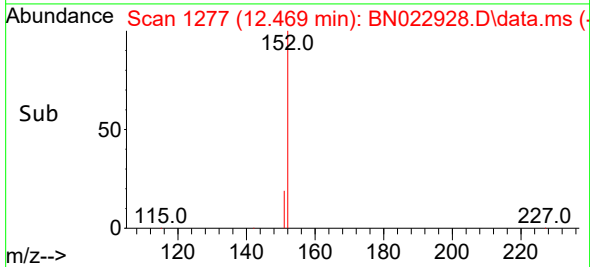
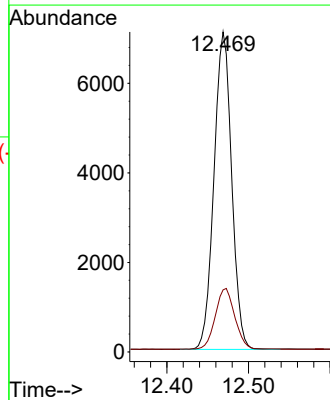
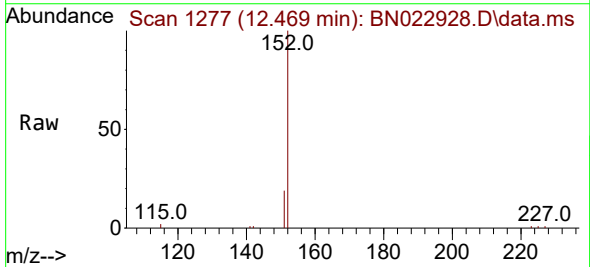
Instrument : BNA_N
 ClientSampleId : PB149143BL

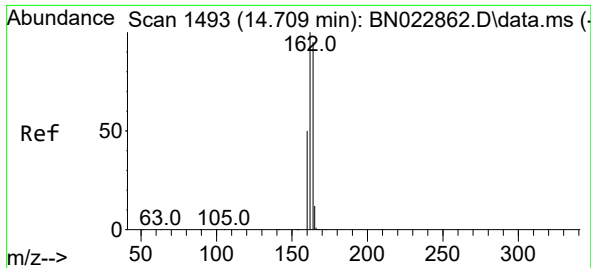
Tgt Ion	Resp	Lower	Upper
82	5447		
128	40.9	36.6	54.8
54	49.6	38.5	57.7



#11
 2-Methylnaphthalene-d10
 Concen: 0.294 ng
 RT: 12.469 min Scan# 1277
 Delta R.T. -0.000 min
 Lab File: BN022928.D
 Acq: 28 Nov 2022 22:26

Tgt Ion	Resp	Lower	Upper
152	12817		
151	23.2	18.6	27.8



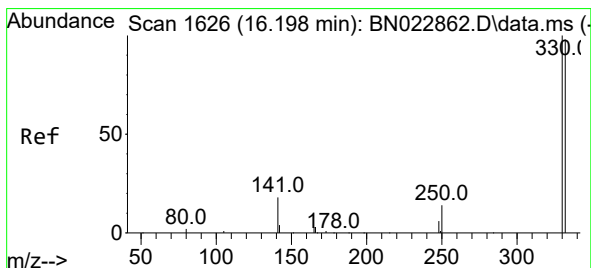
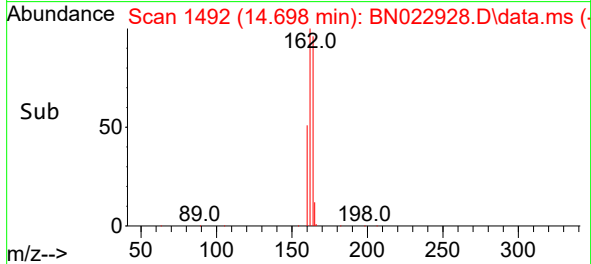
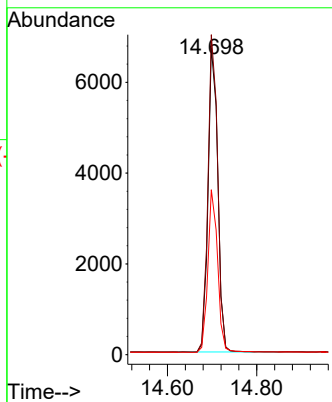
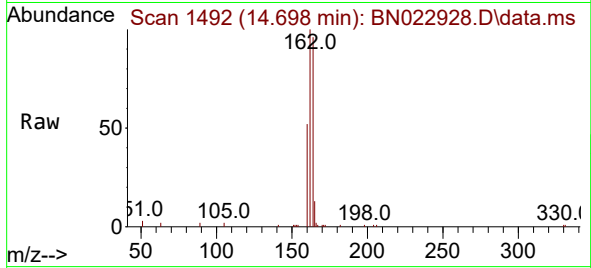


#13
 Acenaphthene-d10
 Concen: 0.400 ng
 RT: 14.698 min Scan# 14
 Delta R.T. -0.000 min
 Lab File: BN022928.D
 Acq: 28 Nov 2022 22:26

Instrument :
 BNA_N
 ClientSampleId :
 PB149143BL

Tgt Ion:164 Resp: 10133

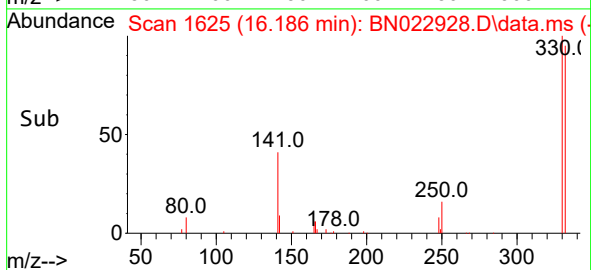
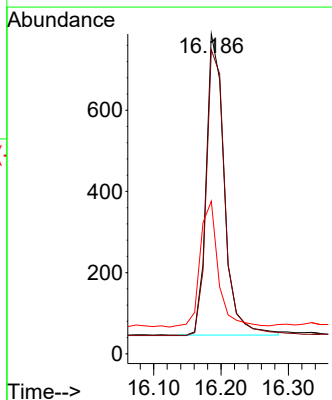
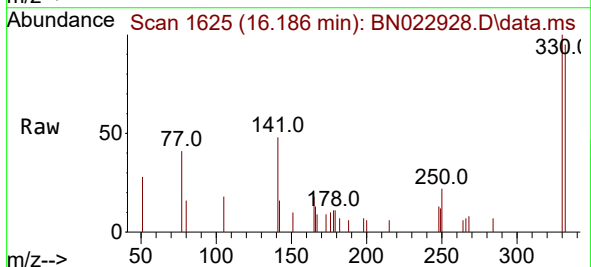
Ion	Ratio	Lower	Upper
164	100		
162	104.2	84.2	126.4
160	53.7	42.5	63.7

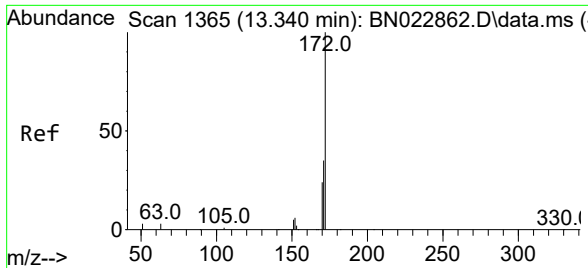


#14
 2,4,6-Tribromophenol
 Concen: 0.282 ng
 RT: 16.186 min Scan# 1625
 Delta R.T. -0.000 min
 Lab File: BN022928.D
 Acq: 28 Nov 2022 22:26

Tgt Ion:330 Resp: 1382

Ion	Ratio	Lower	Upper
330	100		
332	98.3	76.5	114.7
141	42.3	32.6	48.8

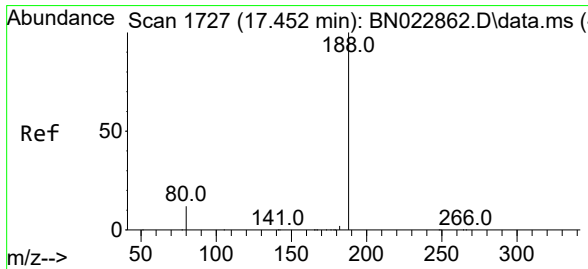
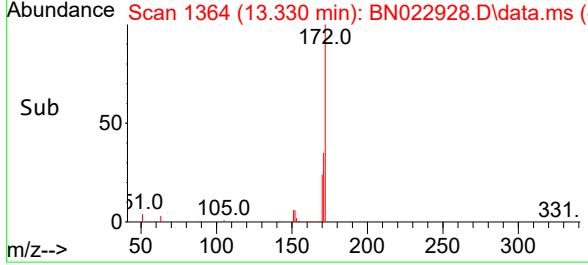
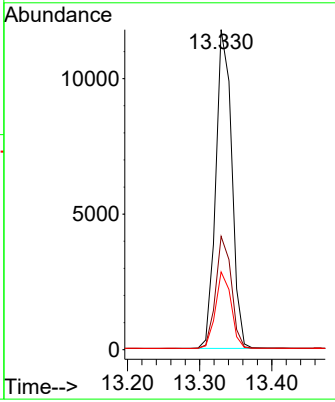
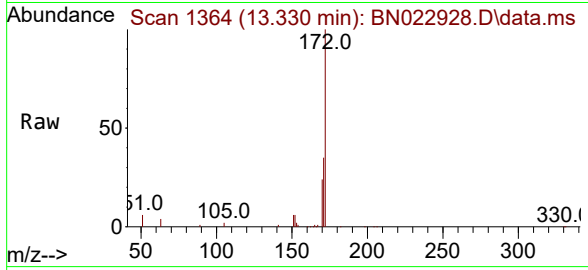




#15
 2-Fluorobiphenyl
 Concen: 0.390 ng
 RT: 13.330 min Scan# 11
 Delta R.T. -0.000 min
 Lab File: BN022928.D
 Acq: 28 Nov 2022 22:26

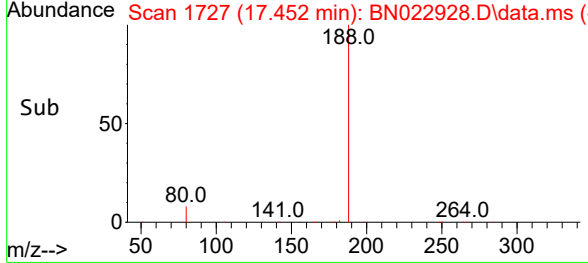
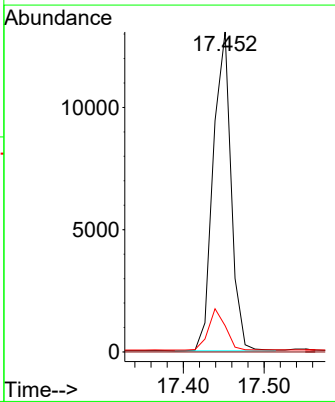
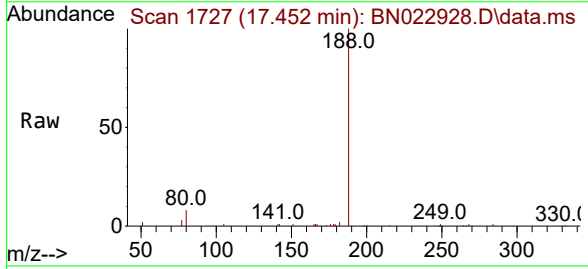
Instrument : BNA_N
 ClientSampleId : PB149143BL

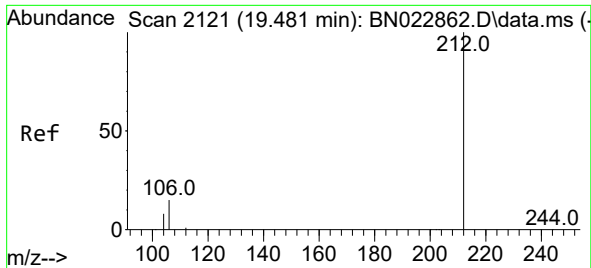
Tgt Ion	Resp	Lower	Upper
172	18090		
171	35.4	28.2	42.4
170	24.3	19.3	28.9



#19
 Phenanthrene-d10
 Concen: 0.400 ng
 RT: 17.452 min Scan# 1727
 Delta R.T. -0.000 min
 Lab File: BN022928.D
 Acq: 28 Nov 2022 22:26

Tgt Ion	Resp	Lower	Upper
188	20084		
94	0.0	0.0	0.0
80	8.2	10.3	15.5#

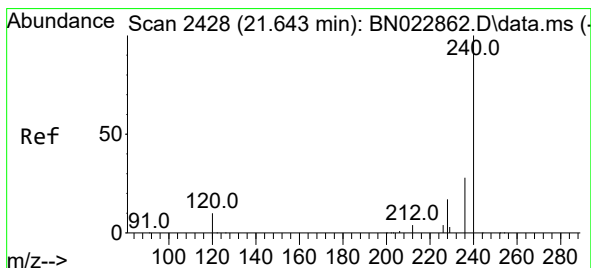
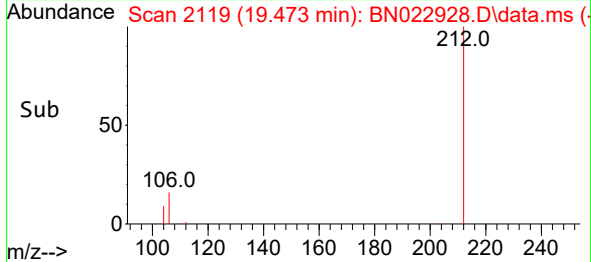
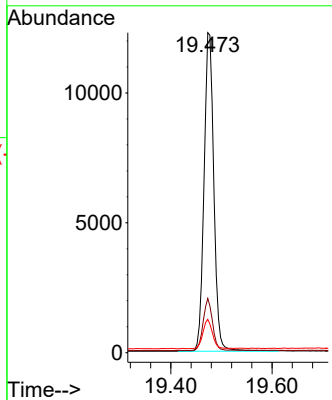
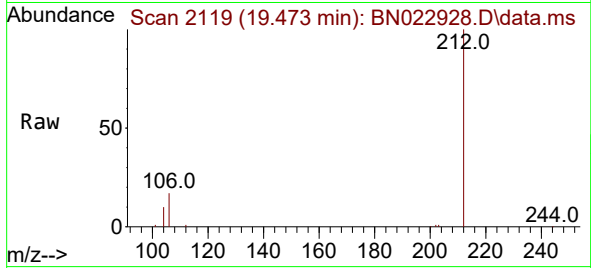




#27
 Fluoranthene-d10
 Concen: 0.302 ng
 RT: 19.473 min Scan# 2119
 Delta R.T. -0.004 min
 Lab File: BN022928.D
 Acq: 28 Nov 2022 22:26

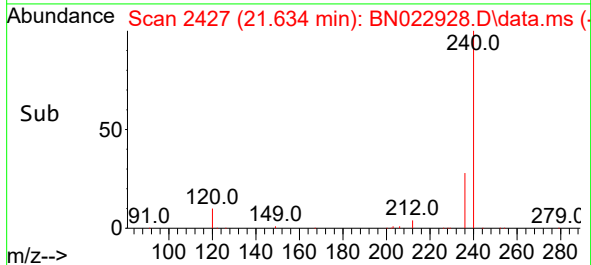
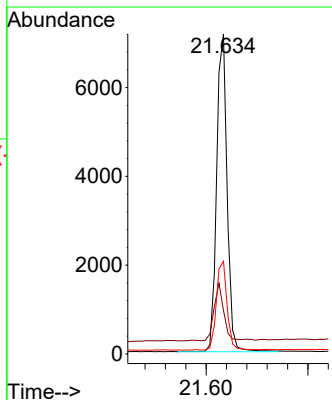
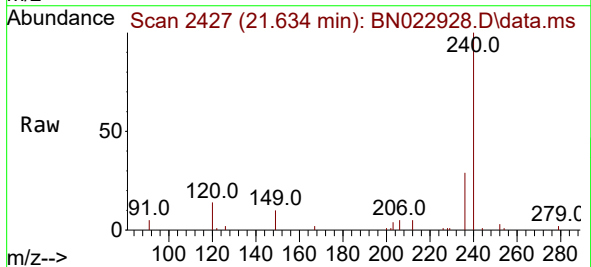
Instrument :
 BNA_N
 ClientSampleId :
 PB149143BL

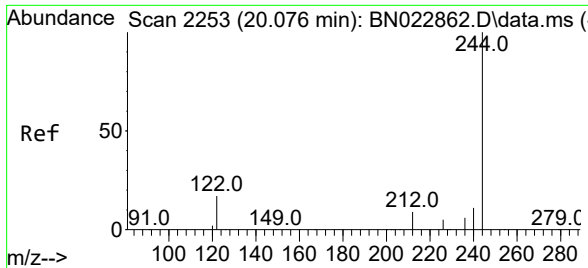
Tgt Ion	Resp	Lower	Upper
212	16459		
106	15.7	12.3	18.5
104	8.8	7.0	10.4



#29
 Chrysene-d12
 Concen: 0.400 ng
 RT: 21.634 min Scan# 2427
 Delta R.T. -0.000 min
 Lab File: BN022928.D
 Acq: 28 Nov 2022 22:26

Tgt Ion	Resp	Lower	Upper
240	10214		
120	13.6	9.2	13.8
236	28.9	22.6	34.0

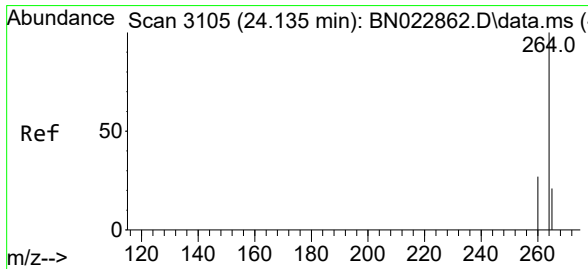
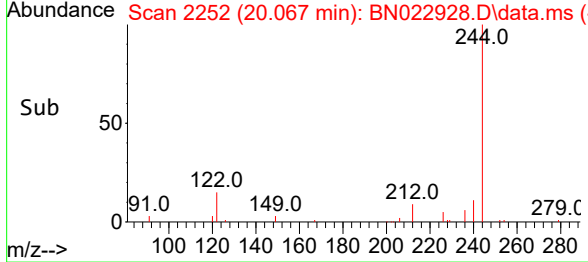
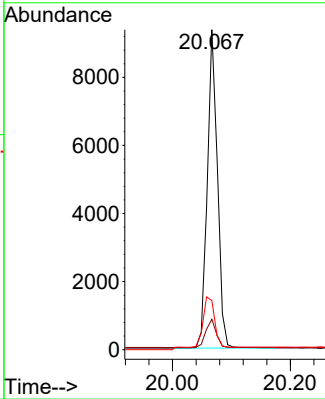
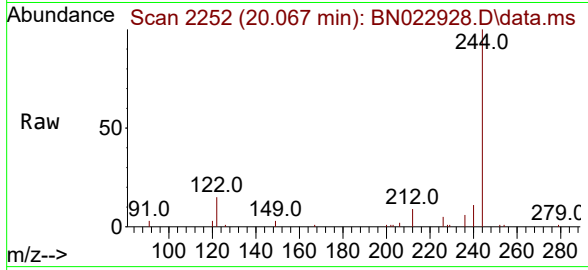




#31
 Terphenyl-d14
 Concen: 0.465 ng
 RT: 20.067 min Scan# 211
 Delta R.T. -0.000 min
 Lab File: BN022928.D
 Acq: 28 Nov 2022 22:26

Instrument : BNA_N
 ClientSampleId : PB149143BL

Tgt Ion	Resp	Lower	Upper
244	11154		
212	9.5	7.9	11.9
122	15.4	13.9	20.9



#35
 Perylene-d12
 Concen: 0.400 ng
 RT: 24.120 min Scan# 3100
 Delta R.T. -0.003 min
 Lab File: BN022928.D
 Acq: 28 Nov 2022 22:26

Tgt Ion	Resp	Lower	Upper
264	7213		
260	28.0	21.7	32.5
265	76.9	31.0	46.4#

