

Data Path : Z:\svoasrv\HPCHEM1\BNA_N\Data\BN041024\
 Data File : BN030811.D
 Acq On : 10 Apr 2024 10:29
 Operator : MA/JU
 Sample : PB160124BL
 Misc :
 ALS Vial : 3 Sample Multiplier: 1

Instrument :
 BNA_N
 ClientSampleId :
 SBLK124

Integration Parameters: LSCINT.P

Integrator: RTE
 Smoothing : OFF Filtering: 5
 Sampling : 1 Min Area: 0.1 % of largest Peak
 Start Thrs: 0.2 Max Peaks: 100
 Stop Thrs : 0 Peak Location: TOP

If leading or trailing edge < 100 prefer < Baseline drop else tangent >
 Peak separation: 5

Method : Z:\svoasrv\HPCHEM1\BNA_N\Methods\SFAM-EPA-BN032824.MA.M
 Title : SVOA CALIBRATION

Signal : TIC: BN030811.D\data.ms

peak #	R.T. min	first scan	max scan	last scan	PK TY	peak height	corr. area	corr. % max.	% of total
1	3.187	30	34	41	rBV	44416	66522	1.02%	0.104%
2	3.593	100	103	126	rBV	657984	1154125	17.68%	1.813%
3	3.911	154	157	162	rVB3	8323	11772	0.18%	0.018%
4	6.852	650	657	672	rBV	826124	1347432	20.64%	2.116%
5	7.022	679	686	698	rVB	705203	1115651	17.09%	1.752%
6	7.211	711	718	729	rBV	849010	1352987	20.72%	2.125%
7	7.681	790	798	807	rBV	701922	1161258	17.79%	1.824%
8	8.381	910	917	933	rBV	1098088	1778642	27.24%	2.793%
9	8.834	985	994	1005	rBV	853463	1376655	21.08%	2.162%
10	9.552	1109	1116	1136	rBV	673739	1127206	17.26%	1.770%
11	10.081	1199	1206	1217	rBV	1135145	1872802	28.68%	2.941%
12	10.463	1262	1271	1281	rBV	1106074	1874353	28.71%	2.944%
13	10.605	1287	1295	1314	rBV	1338826	2350193	36.00%	3.691%
14	12.052	1536	1541	1548	rBV2	18127	31582	0.48%	0.050%
15	13.216	1734	1739	1743	rBV2	12045	17660	0.27%	0.028%
16	13.740	1819	1828	1842	rBV	2181477	3108756	47.61%	4.882%
17	14.016	1867	1875	1893	rBV	2546422	3801603	58.23%	5.970%
18	14.322	1920	1927	1936	rBV	2001227	2806716	42.99%	4.408%
19	14.528	1955	1962	1985	rBV	786549	1453591	22.26%	2.283%
20	14.734	1995	1997	2003	rVB7	6056	8046	0.12%	0.013%
21	15.316	2089	2096	2110	rBV	3412918	4792376	73.40%	7.526%
22	15.434	2110	2116	2133	rVV	821561	1204824	18.45%	1.892%
23	15.557	2133	2137	2142	rVB2	18095	27070	0.41%	0.043%
24	16.104	2225	2230	2235	rVB5	12088	18316	0.28%	0.029%
25	16.745	2336	2339	2343	rBV5	5489	7044	0.11%	0.011%
26	16.851	2352	2357	2365	rBV5	5645	11325	0.17%	0.018%
27	17.069	2387	2394	2404	rBV	2593088	3568443	54.65%	5.604%
28	17.169	2404	2411	2423	rVV	3867304	5457703	83.59%	8.571%
29	17.739	2503	2508	2513	rVB7	5480	12188	0.19%	0.019%
30	19.034	2723	2728	2734	rBV2	48046	67285	1.03%	0.106%
31	19.104	2736	2740	2744	rBV	39961	54275	0.83%	0.085%
32	19.469	2796	2802	2817	rBV	4592593	6529140	100.00%	10.254%
33	21.310	3109	3115	3123	rBV	2689086	3939966	60.34%	6.188%
34	24.039	3570	3579	3596	rBV2	2486749	6192841	94.85%	9.726%
35	24.239	3605	3613	3627	rBV2	1589254	3973465	60.86%	6.240%

Data Path : Z:\svoasrv\HPCHEM1\BNA_N\Data\BN041024\
Data File : BN030811.D
Acq On : 10 Apr 2024 10:29
Operator : MA/JU
Sample : PB160124BL
Misc :
ALS Vial : 3 Sample Multiplier: 1

Instrument :
BNA_N
ClientSampleId :
SBLK124

Integration Parameters: LSCINT.P

Integrator: RTE
Smoothing : OFF Filtering: 5
Sampling : 1 Min Area: 0.1 % of largest Peak
Start Thrs: 0.2 Max Peaks: 100
Stop Thrs : 0 Peak Location: TOP

If leading or trailing edge < 100 prefer < Baseline drop else tangent >
Peak separation: 5

Method : Z:\svoasrv\HPCHEM1\BNA_N\Methods\SFAM-EPA-BN032824.MA.M
Title : SVOA CALIBRATION

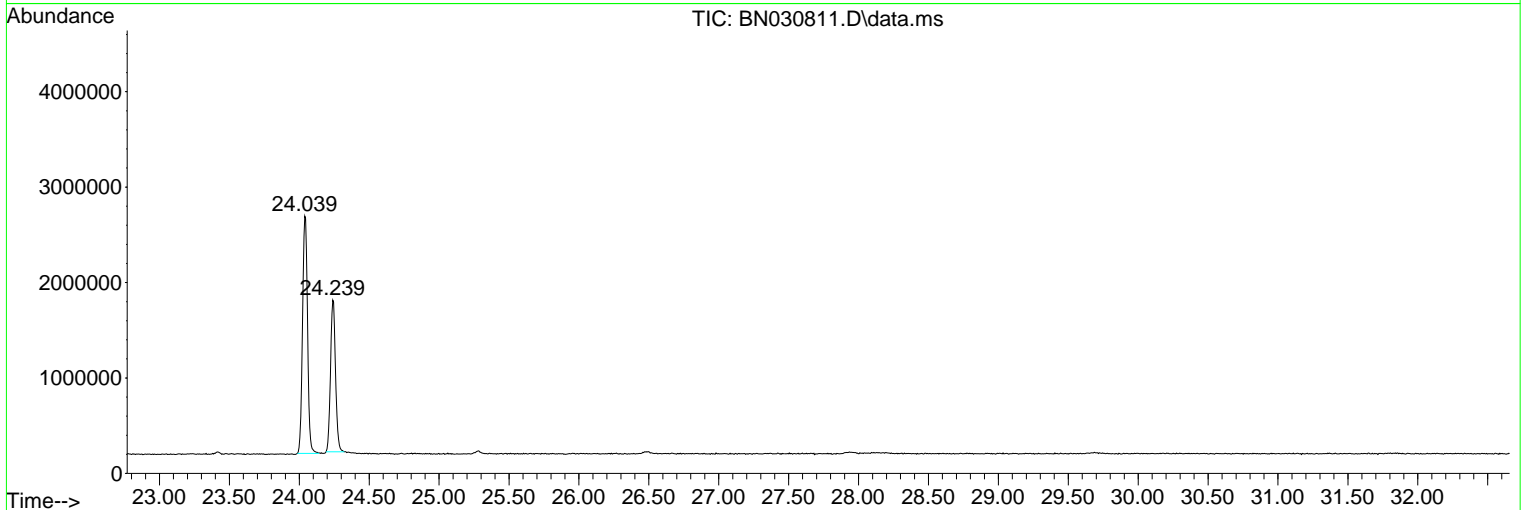
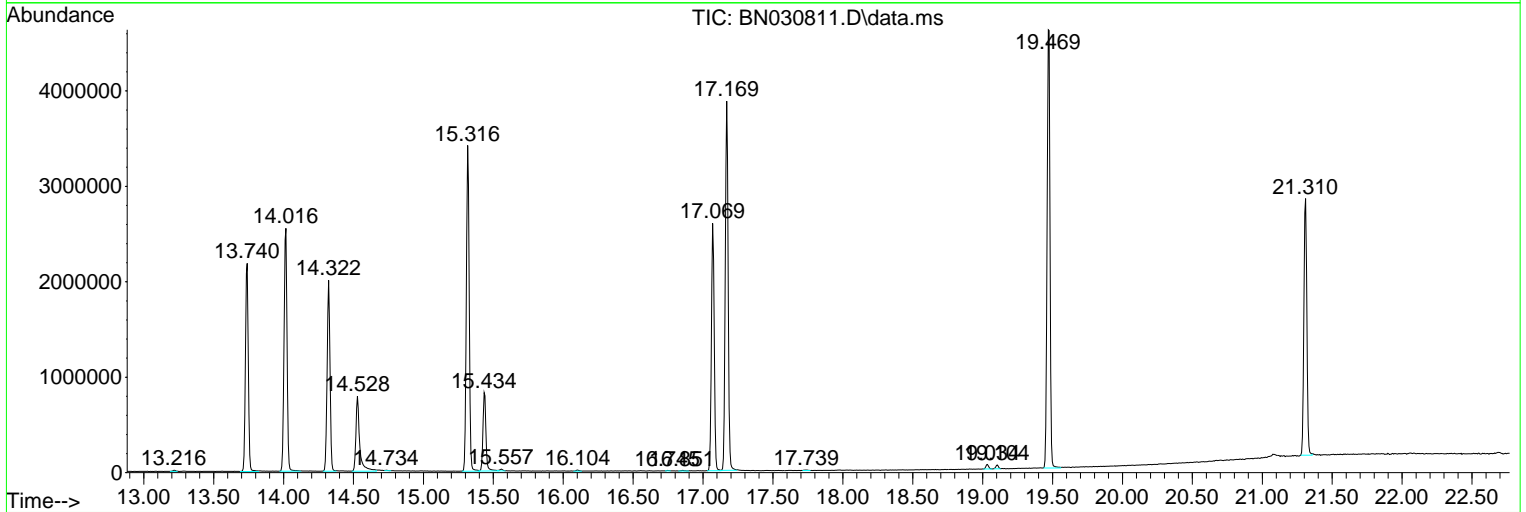
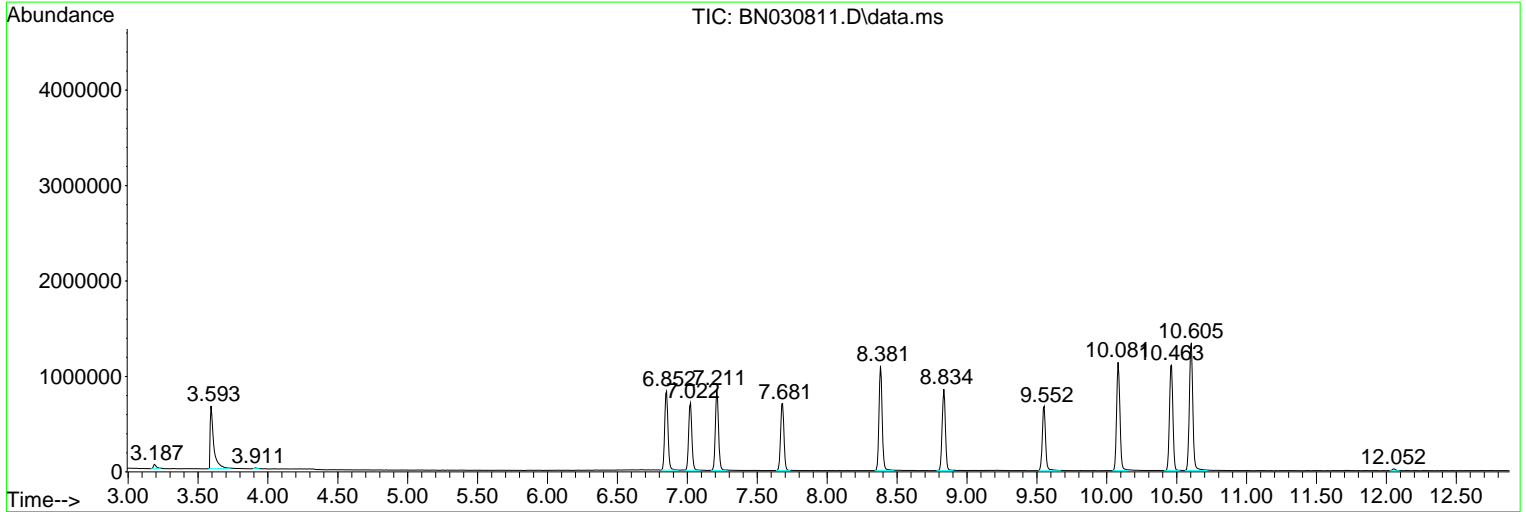
Sum of corrected areas: 63673813

Data Path : Z:\svoasrv\HPCHEM1\BNA_N\Data\BN041024\
 Data File : BN030811.D
 Acq On : 10 Apr 2024 10:29
 Operator : MA/JU
 Sample : PB160124BL
 Misc :
 ALS Vial : 3 Sample Multiplier: 1

Instrument :
 BNA_N
 ClientSampleId :
 SBLK124

Quant Method : Z:\svoasrv\HPCHEM1\BNA_N\Methods\SFAM-EPA-BN032824.MA.M
 Quant Title : SVOA CALIBRATION

TIC Library : C:\Database\NIST20.L
 TIC Integration Parameters: LSCINT.P



Library Search Compound Report

Data Path : Z:\svoasrv\HPCHEM1\BNA_N\Data\BN041024\
Data File : BN030811.D
Acq On : 10 Apr 2024 10:29
Operator : MA/JU
Sample : PB160124BL
Misc :
ALS Vial : 3 Sample Multiplier: 1

Instrument :
BNA_N
ClientSampleId :
SBLK124

Quant Method : Z:\svoasrv\HPCHEM1\BNA_N\Methods\SFAM-EPA-BN032824.MA.M
Quant Title : SVOA CALIBRATION

TIC Library : C:\Database\NIST20.L
TIC Integration Parameters: LSCINT.P

No Library Search Compounds Detected

Data Path : Z:\svoasrv\HPCHEM1\BNA_N\Data\BN041024\
Data File : BN030811.D
Acq On : 10 Apr 2024 10:29
Operator : MA/JU
Sample : PB160124BL
Misc :
ALS Vial : 3 Sample Multiplier: 1

Instrument :
BNA_N
ClientSampleId :
SBLK124

Quant Method : Z:\svoasrv\HPCHEM1\BNA_N\Methods\SFAM-EPA-BN032824.MA.M
Quant Title : SVOA CALIBRATION

TIC Library : C:\Database\NIST0.L
TIC Integration Parameters: LSCINT.P

TIC Top Hit name	RT	EstConc	Units	Response	#	RT	Resp	Conc
------------------	----	---------	-------	----------	---	----	------	------
