

Data Path : Z:\svoasrv\HPCHEM1\BNA_N\Data\BN041024\
 Data File : BN030821.D
 Acq On : 10 Apr 2024 17:52
 Operator : MA/JU
 Sample : P2006-13
 Misc :
 ALS Vial : 14 Sample Multiplier: 1

Instrument :
 BNA_N
 ClientSampleId :
 MCORF2

Integration Parameters: LSCINT.P

Integrator: RTE
 Smoothing : OFF Filtering: 5
 Sampling : 1 Min Area: 0.1 % of largest Peak
 Start Thrs: 0.2 Max Peaks: 100
 Stop Thrs : 0 Peak Location: TOP

If leading or trailing edge < 100 prefer < Baseline drop else tangent >
 Peak separation: 5

Method : Z:\svoasrv\HPCHEM1\BNA_N\Methods\SFAM-EPA-BN032824.MA.M
 Title : SVOA CALIBRATION

Signal : TIC: BN030821.D\data.ms

peak #	R.T. min	first scan	max scan	last scan	PK TY	peak height	corr. area	corr. % max.	% of total
1	3.599	102	104	120	rBV	114208	211199	0.32%	0.060%
2	5.052	338	351	355	rBV2	22377782	65103924	100.00%	18.346%
3	6.369	569	575	582	rVB	44356	69959	0.11%	0.020%
4	6.852	649	657	666	rVB	166371	262578	0.40%	0.074%
5	7.022	679	686	694	rBV	746486	1157544	1.78%	0.326%
6	7.216	711	719	730	rBV	643372	1073968	1.65%	0.303%
7	7.575	770	780	792	rBV	7187450	12874731	19.78%	3.628%
8	7.752	792	810	814	rBV3	21143240	63208325	97.09%	17.812%
9	8.057	849	862	868	rBV2	19831078	56036335	86.07%	15.791%
10	8.381	911	917	926	rBV	518334	835896	1.28%	0.236%
11	8.834	987	994	998	rBV	870499	1525164	2.34%	0.430%
12	8.881	998	1002	1013	rVB	1765471	2707720	4.16%	0.763%
13	9.163	1043	1050	1059	rBV	650142	1077223	1.65%	0.304%
14	9.393	1082	1089	1092	rBV	224523	351414	0.54%	0.099%
15	9.434	1092	1096	1099	rVV	206651	381834	0.59%	0.108%
16	9.475	1099	1103	1110	rVV	366649	660332	1.01%	0.186%
17	9.552	1110	1116	1121	rVV	715078	1163496	1.79%	0.328%
18	9.604	1121	1125	1137	rVB	141316	240668	0.37%	0.068%
19	9.846	1159	1166	1172	rVB	73851	128926	0.20%	0.036%
20	10.087	1200	1207	1227	rBV	999933	1798769	2.76%	0.507%
21	10.363	1239	1254	1259	rBV4	20998202	58759211	90.25%	16.559%
22	10.475	1266	1273	1279	rBV	916751	1415242	2.17%	0.399%
23	10.604	1287	1295	1310	rBV	798947	1371125	2.11%	0.386%
24	10.857	1328	1338	1351	rBV	11968361	23373389	35.90%	6.587%
25	11.063	1366	1373	1384	rVB	560648	901506	1.38%	0.254%
26	11.275	1399	1409	1417	rBV	145224	259803	0.40%	0.073%
27	11.757	1481	1491	1503	rVB3	105575	228113	0.35%	0.064%
28	12.034	1528	1538	1547	rVB3	39737	99979	0.15%	0.028%
29	12.210	1561	1568	1583	rBV4	41219	90145	0.14%	0.025%
30	12.463	1605	1611	1612	rBV	307819	408593	0.63%	0.115%
31	12.498	1612	1617	1625	rVV	1465045	2307778	3.54%	0.650%
32	12.740	1652	1658	1670	rBV	127555	214221	0.33%	0.060%
33	13.110	1714	1721	1734	rBV	4300586	6750194	10.37%	1.902%
34	13.340	1755	1760	1767	rBV	81438	126306	0.19%	0.036%
35	13.740	1816	1828	1833	rBV	2283947	3342545	5.13%	0.942%
36	13.781	1833	1835	1844	rVB2	102234	133785	0.21%	0.038%

Data Path : Z:\svoasrv\HPCHEM1\BNA_N\Data\BN041024\
 Data File : BN030821.D
 Acq On : 10 Apr 2024 17:52
 Operator : MA/JU
 Sample : P2006-13
 Misc :
 ALS Vial : 14 Sample Multiplier: 1

Instrument :
 BNA_N
 ClientSampleId :
 MCORF2

Integration Parameters: LSCINT.P

Integrator: RTE
 Smoothing : OFF Filtering: 5
 Sampling : 1 Min Area: 0.1 % of largest Peak
 Start Thrs: 0.2 Max Peaks: 100
 Stop Thrs : 0 Peak Location: TOP

If leading or trailing edge < 100 prefer < Baseline drop else tangent >
 Peak separation: 5

Method : Z:\svoasrv\HPCHEM1\BNA_N\Methods\SFAM-EPA-BN032824.MA.M
 Title : SVOA CALIBRATION

37	14.016	1867	1875	1886	rBV	2552406	3890819	5.98%	1.096%
38	14.322	1916	1927	1940	rBV	1496345	2207451	3.39%	0.622%
39	14.534	1958	1963	1975	rBV	134666	262847	0.40%	0.074%
40	14.634	1975	1980	1986	rVB	225658	322894	0.50%	0.091%
41	14.810	2002	2010	2017	rBV	127676	216570	0.33%	0.061%
42	15.316	2090	2096	2102	rBV	3421449	5018363	7.71%	1.414%
43	15.363	2102	2104	2110	rVV2	105923	148898	0.23%	0.042%
44	15.434	2110	2116	2130	rVV	1008298	1477683	2.27%	0.416%
45	16.286	2256	2261	2268	rBV4	46081	77922	0.12%	0.022%
46	17.069	2388	2394	2404	rBV	1929917	2711438	4.16%	0.764%
47	17.169	2404	2411	2426	rVV2	4238790	5832511	8.96%	1.644%
48	17.969	2542	2547	2554	rBV2	47319	79440	0.12%	0.022%
49	18.039	2554	2559	2564	rVB4	38362	66238	0.10%	0.019%
50	18.445	2623	2628	2634	rVB2	154176	202376	0.31%	0.057%
51	19.033	2723	2728	2732	rBV2	57641	81380	0.13%	0.023%
52	19.104	2734	2740	2744	rBV	58316	90132	0.14%	0.025%
53	19.469	2796	2802	2811	rBV2	5098760	7151292	10.98%	2.015%
54	19.986	2886	2890	2899	rBV4	58279	108592	0.17%	0.031%
55	21.304	3108	3114	3120	rBV2	2147042	3184963	4.89%	0.898%
56	24.039	3570	3579	3590	rBV2	3040165	7611862	11.69%	2.145%
57	24.239	3604	3613	3627	rVB	1366263	3462322	5.32%	0.976%

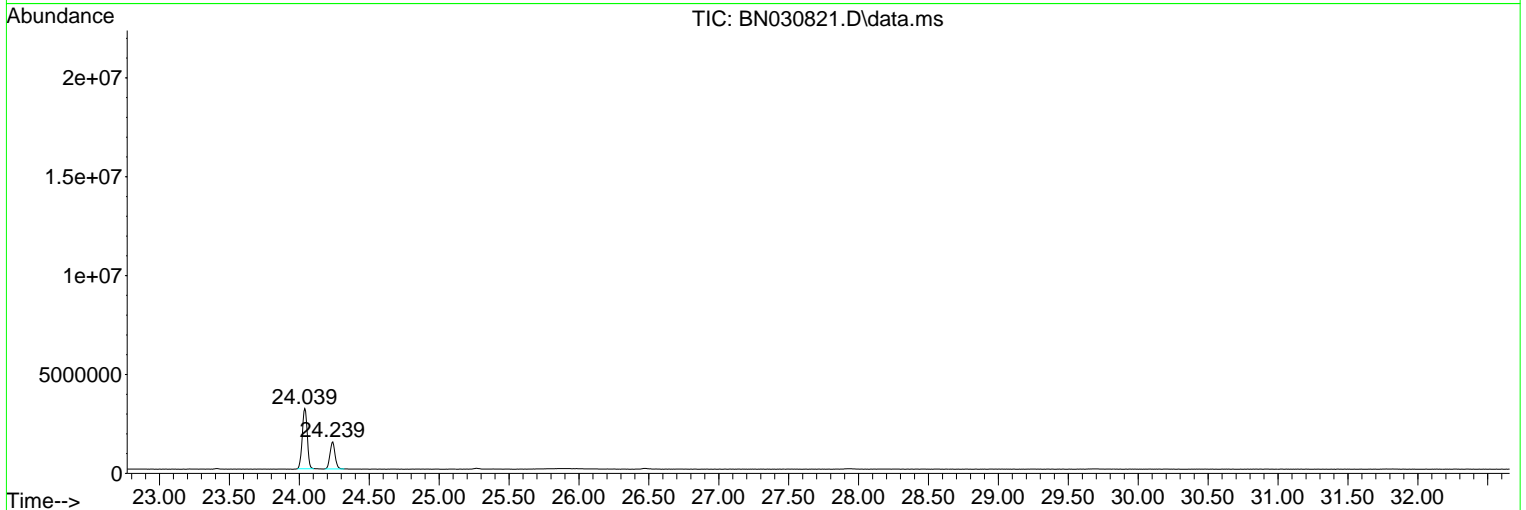
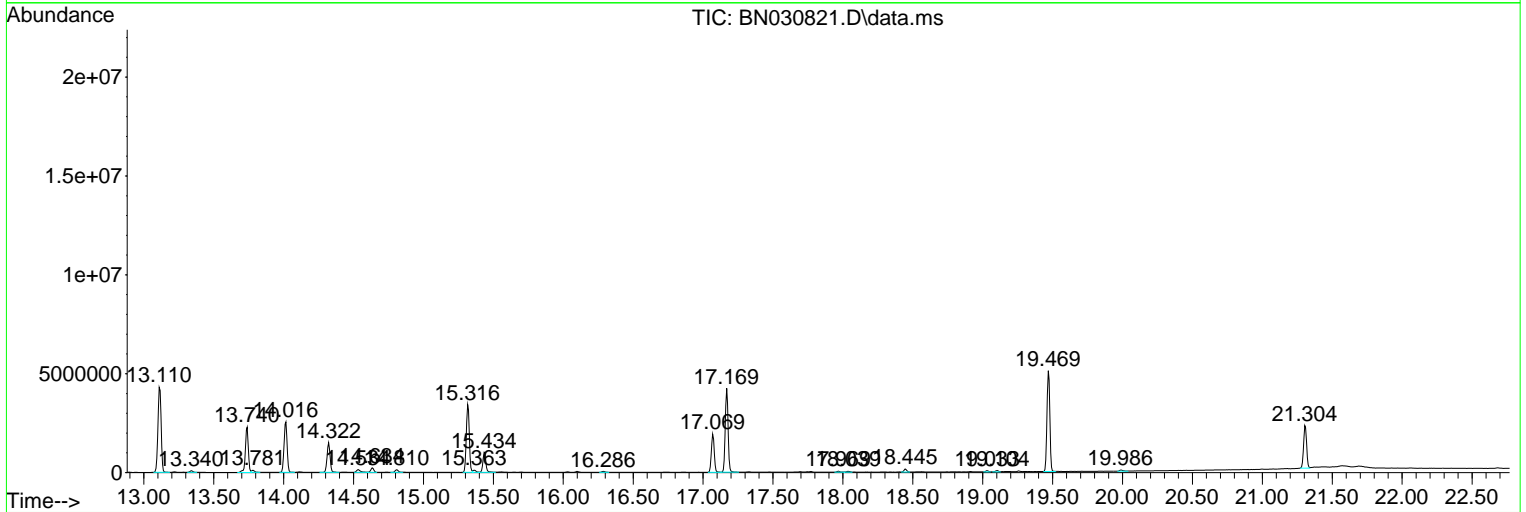
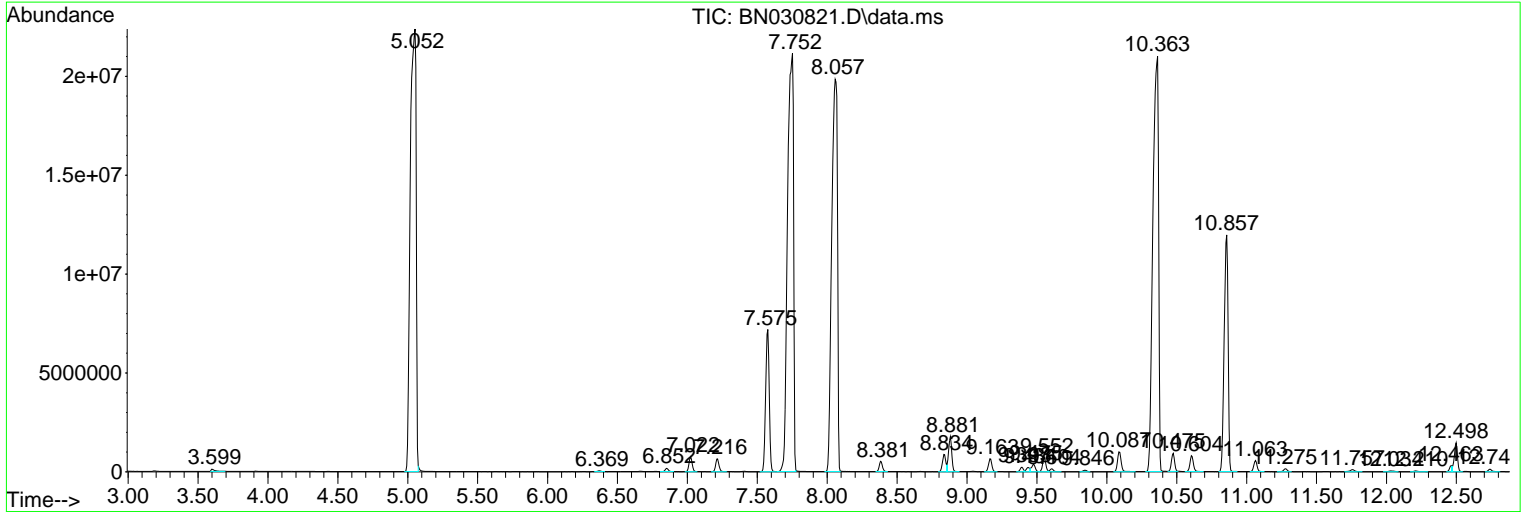
Sum of corrected areas: 354857933

Data Path : Z:\svoasrv\HPCHEM1\BNA_N\Data\BN041024\
 Data File : BN030821.D
 Acq On : 10 Apr 2024 17:52
 Operator : MA/JU
 Sample : P2006-13
 Misc :
 ALS Vial : 14 Sample Multiplier: 1

Instrument :
 BNA_N
 ClientSampleId :
 MCORF2

Quant Method : Z:\svoasrv\HPCHEM1\BNA_N\Methods\SFAM-EPA-BN032824.MA.M
 Quant Title : SVOA CALIBRATION

TIC Library : C:\Database\NIST20.L
 TIC Integration Parameters: LSCINT.P



Data Path : Z:\svoasrv\HPCHEM1\BNA_N\Data\BN041024\
 Data File : BN030821.D
 Acq On : 10 Apr 2024 17:52
 Operator : MA/JU
 Sample : P2006-13
 Misc :
 ALS Vial : 14 Sample Multiplier: 1

Instrument :
 BNA_N
 ClientSampleId :
 MCORF2

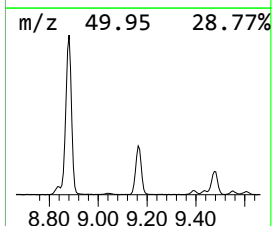
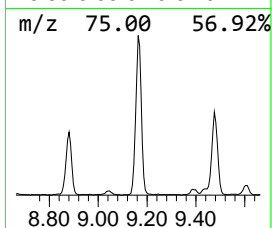
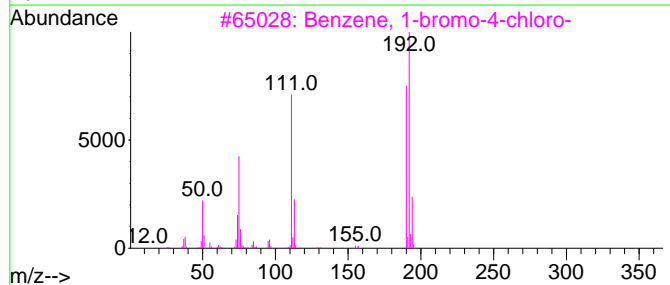
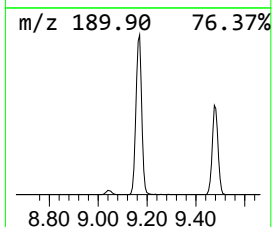
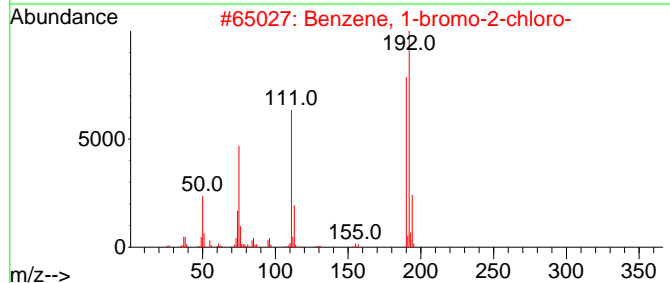
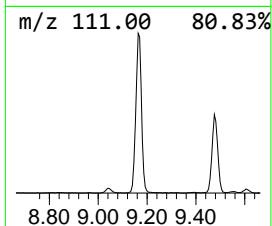
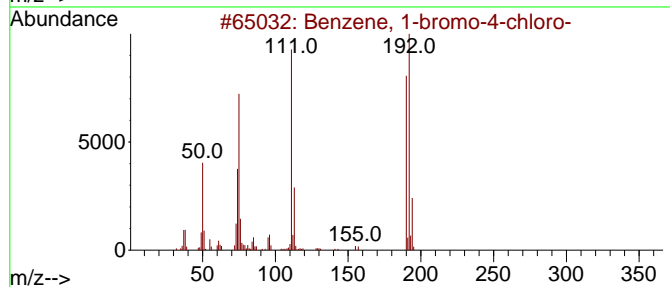
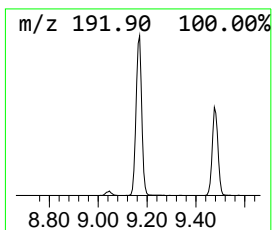
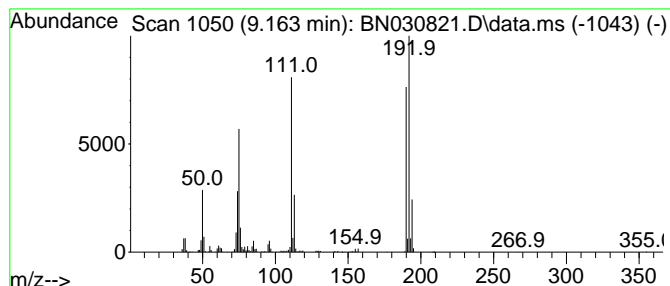
Quant Method : Z:\svoasrv\HPCHEM1\BNA_N\Methods\SFAM-EPA-BN032824.MA.M
 Quant Title : SVOA CALIBRATION

TIC Library : C:\Database\NIST20.L
 TIC Integration Parameters: LSCINT.P

 Peak Number 5 Benzene, 1-bromo-4-chloro- Concentration Rank 6

R.T.	EstConc	Area	Relative to ISTD	R.T.
9.163	15.22 ng/ul	1077220	Naphthalene-d8	10.475

Hit#	of	5	Tentative ID	MW	MolForm	CAS#	Qual
1			Benzene, 1-bromo-4-chloro-	190	C6H4BrCl	000106-39-8	99
2			Benzene, 1-bromo-2-chloro-	190	C6H4BrCl	000694-80-4	98
3			Benzene, 1-bromo-4-chloro-	190	C6H4BrCl	000106-39-8	98
4			4-Chlorophenylselenol	192	C6H5ClSe	016645-10-6	97
5			Benzene, 1-bromo-3-chloro-	190	C6H4BrCl	000108-37-2	97



Data Path : Z:\svoasrv\HPCHEM1\BNA_N\Data\BN041024\
 Data File : BN030821.D
 Acq On : 10 Apr 2024 17:52
 Operator : MA/JU
 Sample : P2006-13
 Misc :
 ALS Vial : 14 Sample Multiplier: 1

Instrument :
 BNA_N
 ClientSampleId :
 MCORF2

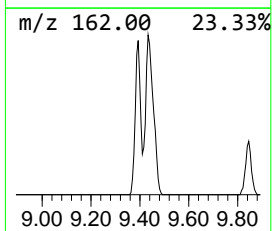
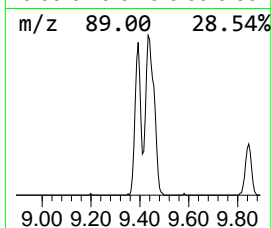
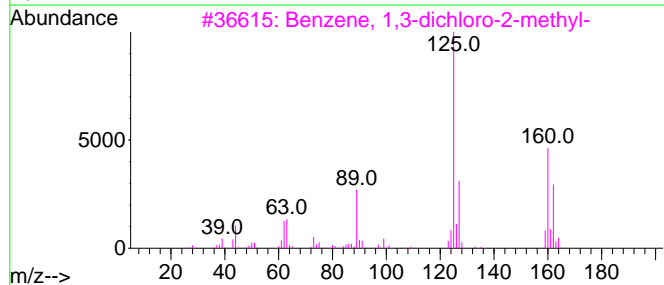
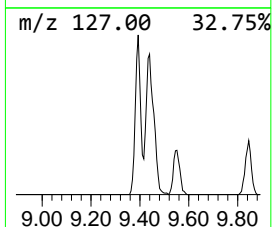
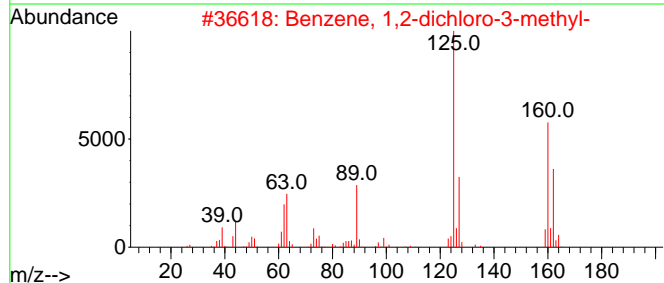
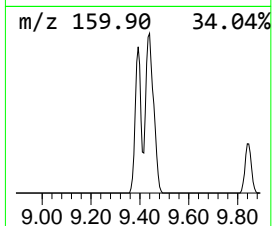
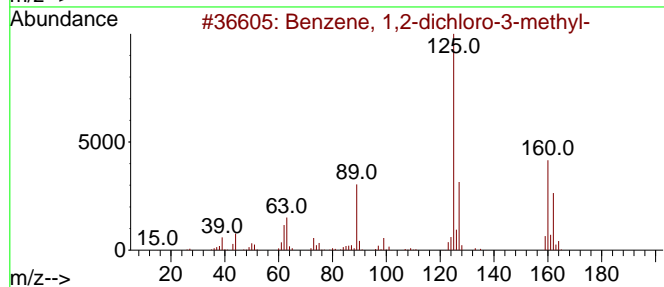
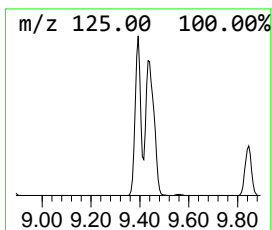
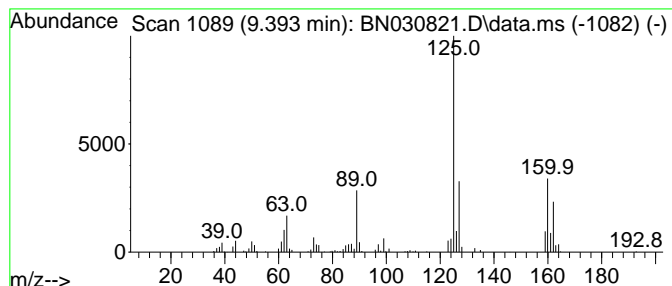
Quant Method : Z:\svoasrv\HPCHEM1\BNA_N\Methods\SFAM-EPA-BN032824.MA.M
 Quant Title : SVOA CALIBRATION

TIC Library : C:\Database\NIST20.L
 TIC Integration Parameters: LSCINT.P

 Peak Number 6 Benzene, 1,2-dichloro-3-met... Concentration Rank 10

R.T.	EstConc	Area	Relative to ISTD	R.T.
9.393	4.97 ng/ul	351414	Naphthalene-d8	10.475

Hit#	of	5	Tentative ID	MW	MolForm	CAS#	Qual
1			Benzene, 1,2-dichloro-3-methyl-	160	C7H6Cl2	032768-54-0	98
2			Benzene, 1,2-dichloro-3-methyl-	160	C7H6Cl2	032768-54-0	97
3			Benzene, 1,3-dichloro-2-methyl-	160	C7H6Cl2	000118-69-4	97
4			Benzene, 1,2-dichloro-4-methyl-	160	C7H6Cl2	000095-75-0	97
5			Benzene, 1,3-dichloro-2-methyl-	160	C7H6Cl2	000118-69-4	96



Data Path : Z:\svoasrv\HPCHEM1\BNA_N\Data\BN041024\
 Data File : BN030821.D
 Acq On : 10 Apr 2024 17:52
 Operator : MA/JU
 Sample : P2006-13
 Misc :
 ALS Vial : 14 Sample Multiplier: 1

Instrument :
 BNA_N
 ClientSampleId :
 MCORF2

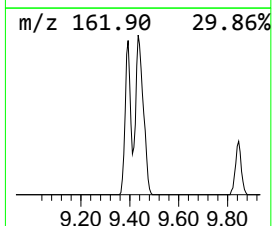
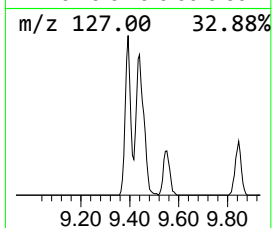
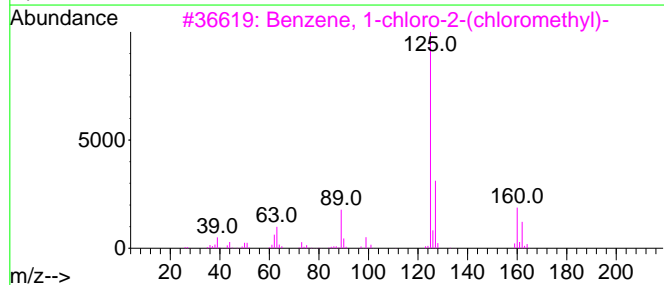
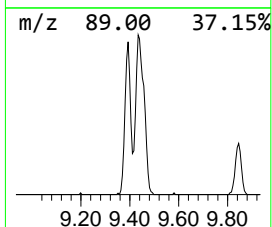
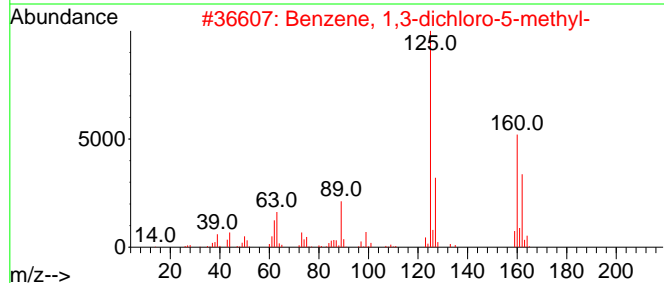
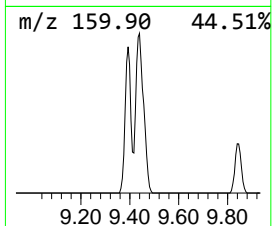
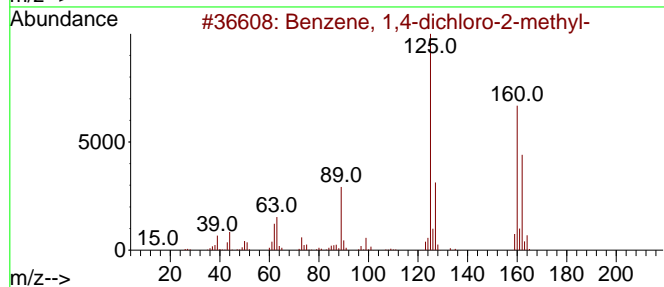
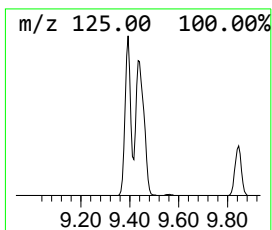
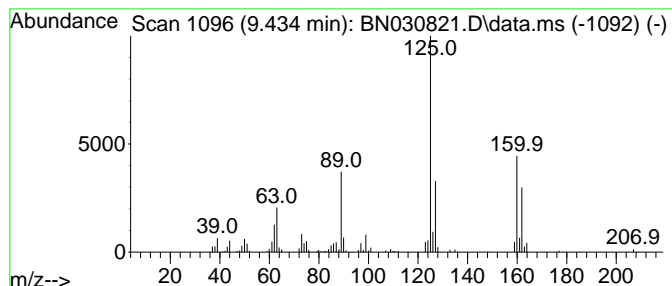
Quant Method : Z:\svoasrv\HPCHEM1\BNA_N\Methods\SFAM-EPA-BN032824.MA.M
 Quant Title : SVOA CALIBRATION

TIC Library : C:\Database\NIST20.L
 TIC Integration Parameters: LSCINT.P

 Peak Number 7 Benzene, 1,4-dichloro-2-met... Concentration Rank 9

R.T.	EstConc	Area	Relative to ISTD	R.T.
9.434	5.40 ng/ul	381834	Naphthalene-d8	10.475

Hit#	of 5	Tentative ID	MW	MolForm	CAS#	Qual
1		Benzene, 1,4-dichloro-2-methyl-	160	C7H6Cl2	019398-61-9	96
2		Benzene, 1,3-dichloro-5-methyl-	160	C7H6Cl2	025186-47-4	96
3		Benzene, 1-chloro-2-(chloromethyl)-	160	C7H6Cl2	000611-19-8	96
4		Benzene, 1,4-dichloro-2-methyl-	160	C7H6Cl2	019398-61-9	96
5		Benzene, 1,2-dichloro-3-methyl-	160	C7H6Cl2	032768-54-0	95



Data Path : Z:\svoasrv\HPCHEM1\BNA_N\Data\BN041024\
 Data File : BN030821.D
 Acq On : 10 Apr 2024 17:52
 Operator : MA/JU
 Sample : P2006-13
 Misc :
 ALS Vial : 14 Sample Multiplier: 1

Instrument :
 BNA_N
 ClientSampleId :
 MCORF2

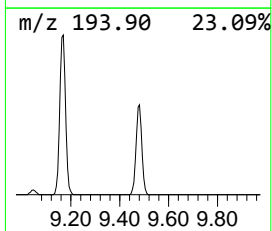
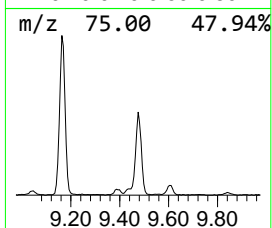
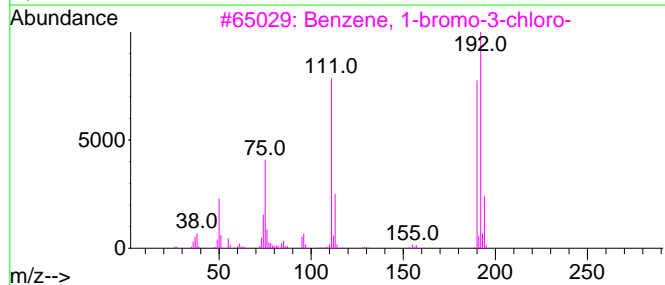
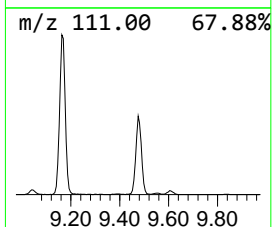
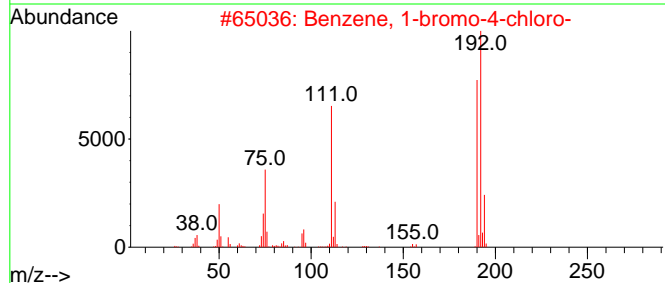
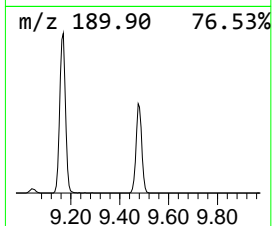
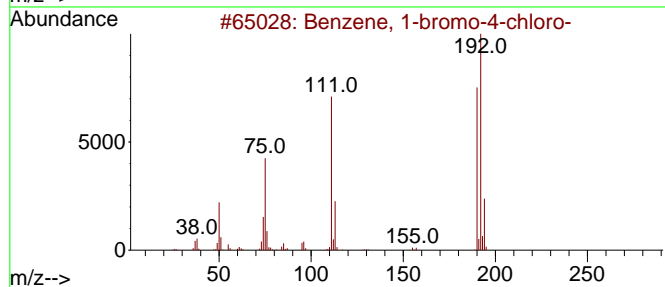
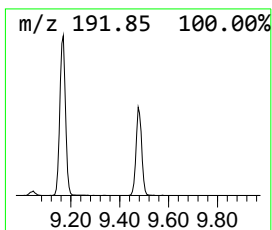
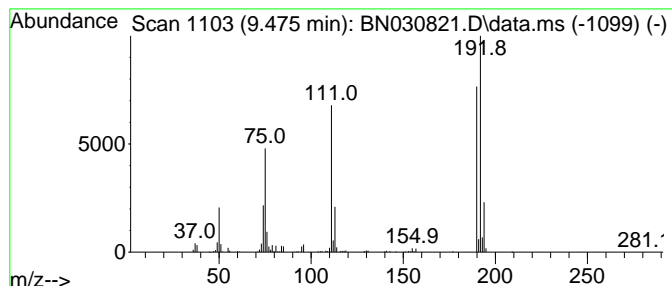
Quant Method : Z:\svoasrv\HPCHEM1\BNA_N\Methods\SFAM-EPA-BN032824.MA.M
 Quant Title : SVOA CALIBRATION

TIC Library : C:\Database\NIST20.L
 TIC Integration Parameters: LSCINT.P

 Peak Number 8 Benzene, 1-bromo-3-chloro- Concentration Rank 8

R.T.	EstConc	Area	Relative to ISTD	R.T.
9.475	9.33 ng/ul	660332	Naphthalene-d8	10.475

Hit#	of	5	Tentative ID	MW	MolForm	CAS#	Qual
1			Benzene, 1-bromo-4-chloro-	190	C6H4BrCl	000106-39-8	98
2			Benzene, 1-bromo-4-chloro-	190	C6H4BrCl	000106-39-8	95
3			Benzene, 1-bromo-3-chloro-	190	C6H4BrCl	000108-37-2	95
4			Benzene, 1-bromo-4-chloro-	190	C6H4BrCl	000106-39-8	95
5			Benzene, 1-bromo-2-chloro-	190	C6H4BrCl	000694-80-4	94



Data Path : Z:\svoasrv\HPCHEM1\BNA_N\Data\BN041024\
 Data File : BN030821.D
 Acq On : 10 Apr 2024 17:52
 Operator : MA/JU
 Sample : P2006-13
 Misc :
 ALS Vial : 14 Sample Multiplier: 1

Instrument :
 BNA_N
 ClientSampleId :
 MCORF2

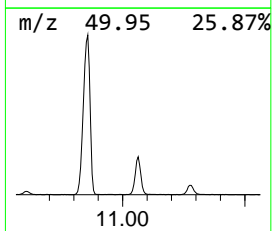
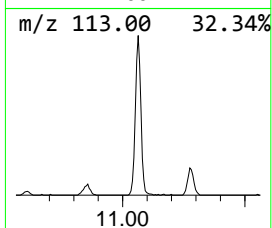
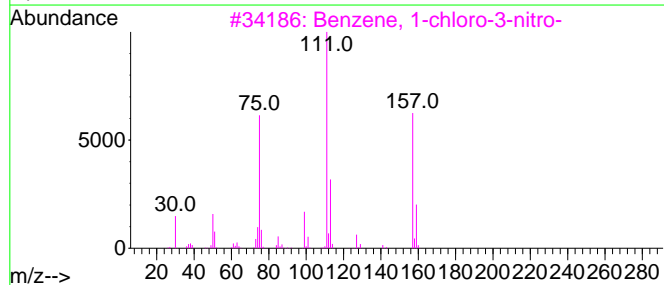
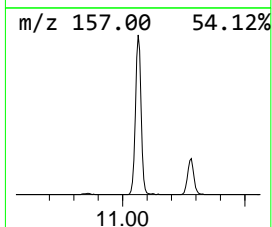
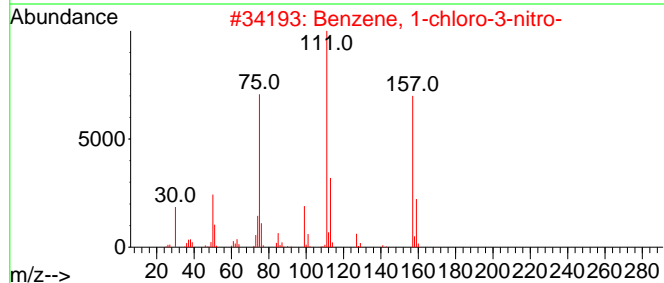
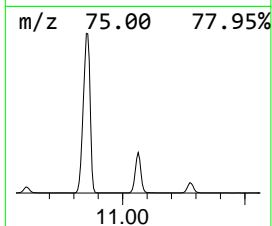
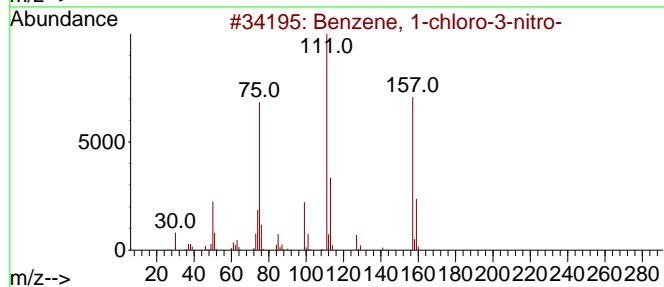
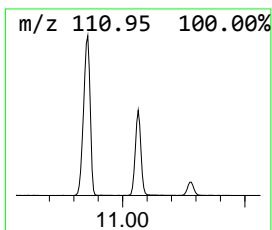
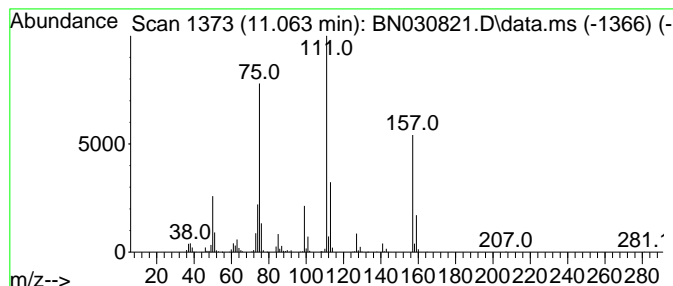
Quant Method : Z:\svoasrv\HPCHEM1\BNA_N\Methods\SFAM-EPA-BN032824.MA.M
 Quant Title : SVOA CALIBRATION

TIC Library : C:\Database\NIST20.L
 TIC Integration Parameters: LSCINT.P

 Peak Number 12 Benzene, 1-chloro-3-nitro- Concentration Rank 7

R.T.	EstConc	Area	Relative to ISTD	R.T.
11.063	12.74 ng/ul	901506	Naphthalene-d8	10.475

Hit#	of 5	Tentative ID	MW	MolForm	CAS#	Qual
1		Benzene, 1-chloro-3-nitro-	157	C6H4ClNO2	000121-73-3	97
2		Benzene, 1-chloro-3-nitro-	157	C6H4ClNO2	000121-73-3	97
3		Benzene, 1-chloro-3-nitro-	157	C6H4ClNO2	000121-73-3	96
4		Benzene, 1-chloro-4-nitro-	157	C6H4ClNO2	000100-00-5	94
5		Benzene, 1-chloro-4-nitro-	157	C6H4ClNO2	000100-00-5	91



Data Path : Z:\svoasrv\HPCHEM1\BNA_N\Data\BN041024\
 Data File : BN030821.D
 Acq On : 10 Apr 2024 17:52
 Operator : MA/JU
 Sample : P2006-13
 Misc :
 ALS Vial : 14 Sample Multiplier: 1

Instrument :
 BNA_N
 ClientSampleId :
 MCORF2

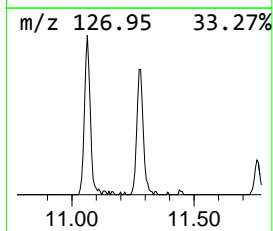
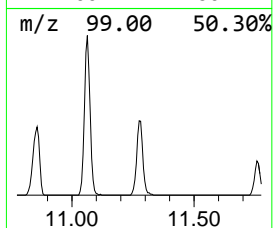
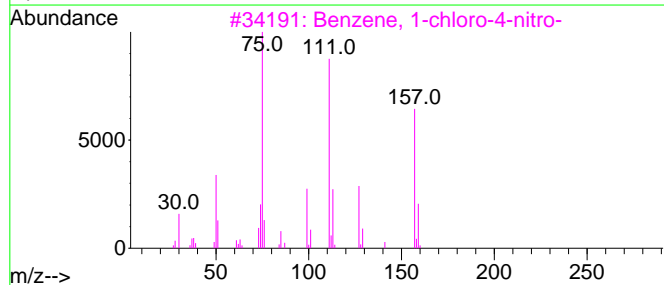
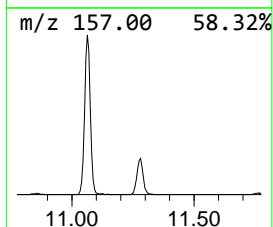
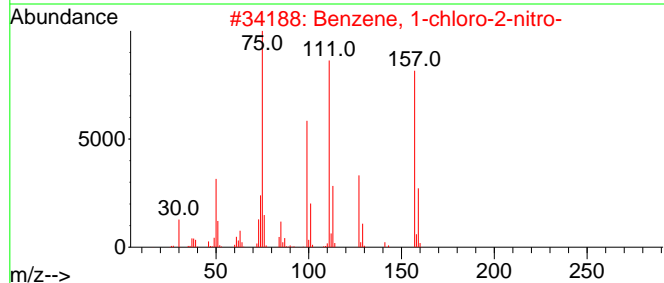
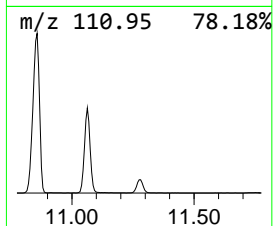
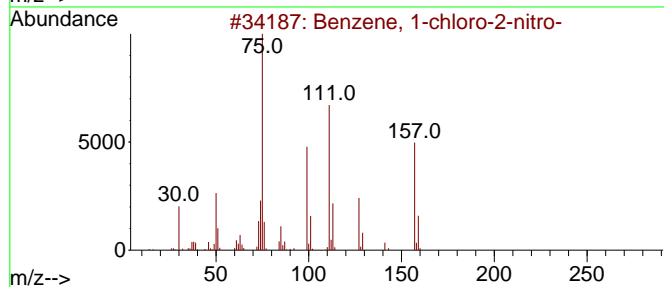
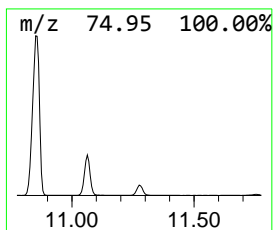
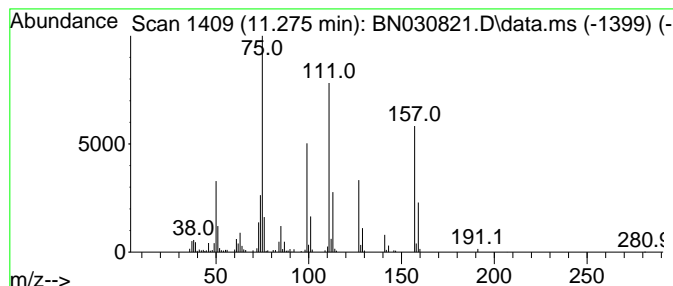
Quant Method : Z:\svoasrv\HPCHEM1\BNA_N\Methods\SFAM-EPA-BN032824.MA.M
 Quant Title : SVOA CALIBRATION

TIC Library : C:\Database\NIST20.L
 TIC Integration Parameters: LSCINT.P

 Peak Number 13 Benzene, 1-chloro-2-nitro- Concentration Rank 12

R.T.	EstConc	Area	Relative to ISTD	R.T.
11.275	3.67 ng/ul	259803	Naphthalene-d8	10.475

Hit#	of 5	Tentative ID	MW	MolForm	CAS#	Qual
1		Benzene, 1-chloro-2-nitro-	157	C6H4ClNO2	000088-73-3	98
2		Benzene, 1-chloro-2-nitro-	157	C6H4ClNO2	000088-73-3	98
3		Benzene, 1-chloro-4-nitro-	157	C6H4ClNO2	000100-00-5	97
4		Benzene, 1-chloro-4-nitro-	157	C6H4ClNO2	000100-00-5	97
5		Benzene, 1-chloro-2-nitro-	157	C6H4ClNO2	000088-73-3	96



Data Path : Z:\svoasrv\HPCHEM1\BNA_N\Data\BN041024\
 Data File : BN030821.D
 Acq On : 10 Apr 2024 17:52
 Operator : MA/JU
 Sample : P2006-13
 Misc :
 ALS Vial : 14 Sample Multiplier: 1

Instrument :
 BNA_N
 ClientSampleId :
 MCORF2

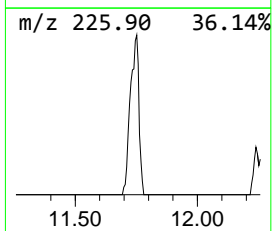
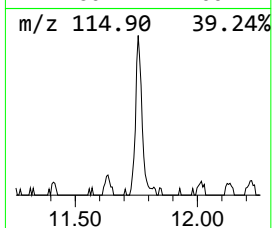
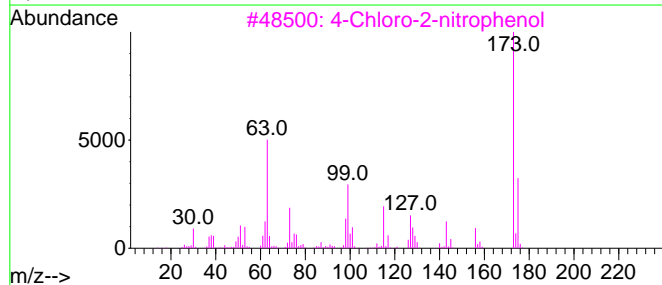
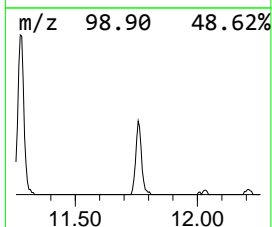
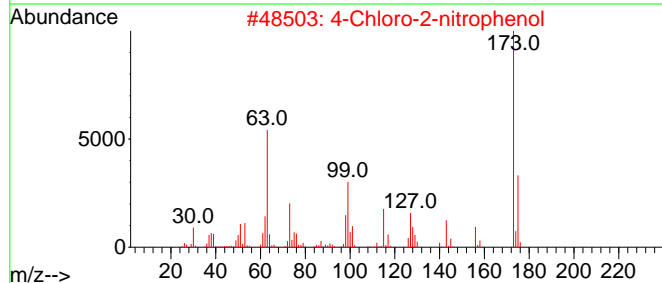
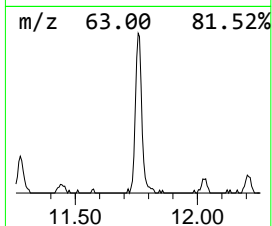
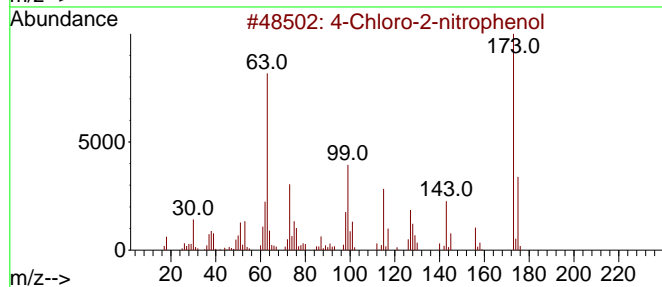
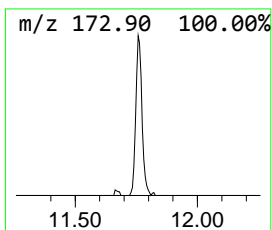
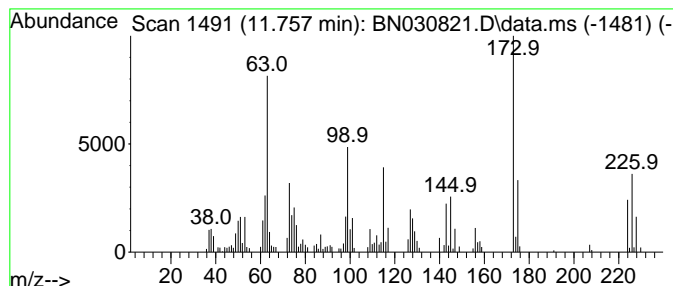
Quant Method : Z:\svoasrv\HPCHEM1\BNA_N\Methods\SFAM-EPA-BN032824.MA.M
 Quant Title : SVOA CALIBRATION

TIC Library : C:\Database\NIST20.L
 TIC Integration Parameters: LSCINT.P

 Peak Number 14 4-Chloro-2-nitrophenol Concentration Rank 14

R.T.	EstConc	Area	Relative to ISTD	R.T.
11.757	3.22 ng/ul	228113	Naphthalene-d8	10.475

Hit#	of	5	Tentative ID	MW	MolForm	CAS#	Qual
1			4-Chloro-2-nitrophenol	173	C6H4ClNO3	000089-64-5	99
2			4-Chloro-2-nitrophenol	173	C6H4ClNO3	000089-64-5	91
3			4-Chloro-2-nitrophenol	173	C6H4ClNO3	000089-64-5	91
4			2-Chloro-6-nitrophenol	173	C6H4ClNO3	000603-86-1	91
5			Phenol, 5-chloro-2-nitro-	173	C6H4ClNO3	000611-07-4	87



Data Path : Z:\svoasrv\HPCHEM1\BNA_N\Data\BN041024\
Data File : BN030821.D
Acq On : 10 Apr 2024 17:52
Operator : MA/JU
Sample : P2006-13
Misc :
ALS Vial : 14 Sample Multiplier: 1

Instrument :
BNA_N
ClientSampleId :
MCORF2

Quant Method : Z:\svoasrv\HPCHEM1\BNA_N\Methods\SFAM-EPA-BN032824.MA.M
Quant Title : SVOA CALIBRATION

TIC Library : C:\Database\NIST20.L
TIC Integration Parameters: LSCINT.P

TIC Top Hit name	RT	EstConc	Units	Response	--Internal Standard--			
					#	RT	Resp	Conc
Benzene, 1-brom...	9.163	15.2	ng/ul	1077220	2	10.475	1415240	20.0
Benzene, 1,2-di...	9.393	5.0	ng/ul	351414	2	10.475	1415240	20.0
Benzene, 1,4-di...	9.434	5.4	ng/ul	381834	2	10.475	1415240	20.0
Benzene, 1-brom...	9.475	9.3	ng/ul	660332	2	10.475	1415240	20.0
Benzene, 1-chlo...	11.063	12.7	ng/ul	901506	2	10.475	1415240	20.0
Benzene, 1-chlo...	11.275	3.7	ng/ul	259803	2	10.475	1415240	20.0
4-Chloro-2-nitr...	11.757	3.2	ng/ul	228113	2	10.475	1415240	20.0