

Data Path : Z:\SVOASRV\HPCHEM1\BNA N\DATA\BN082119\
 Data File : BN007306.D
 Acq On : 22 Aug 2019 00:47
 Operator : HP/JU
 Sample : PB122438BS
 Misc :
 ALS Vial : 13 Sample Multiplier: 1

Instrument :
 BNA_N
 ClientSampled :
 PB122438BS

Manual Integrations
 APPROVED

mohammad
 8/26/2019 5:48:05 PM

Quant Time: Aug 22 06:43:38 2019
 Quant Method : Z:\SVOASRV\HPCHEM1\BNA N\METHODS\8270-SIM-BN082019.M
 Quant Title : ASP BNA STANDARDS FOR 5 POINT CALIBRATION
 QLast Update : Tue Aug 20 18:52:43 2019
 Response via : Initial Calibration

Internal Standards	R.T.	QIon	Response	Conc	Units	Dev(Min)
1) 1,4-Dichlorobenzene-d4	7.41	152	4971	0.40	ng	0.00
7) Naphthalene-d8	10.16	136	18280	0.40	ng	0.00
13) Acenaphthene-d10	14.06	164	9762	0.40	ng	0.00
19) Phenanthrene-d10	16.82	188	22178	0.40	ng	0.00
27) Chrysene-d12	21.03	240	25111	0.40	ng	0.00
34) Perylene-d12	23.14	264	28988	0.40	ng	0.00

System Monitoring Compounds

4) 2-Fluorophenol	5.04	112	4427	0.29	ng	0.00
5) Phenol-d6	6.61	99	5500	0.31	ng	0.00
8) Nitrobenzene-d5	8.54	82	4073	0.29	ng	0.00
11) 2-Methylnaphthalene-d10	11.77	152	9019m	0.29	ng	0.00
14) 2,4,6-Tribromophenol	15.56	330	1619	0.30	ng	0.00
15) 2-Fluorobiphenyl	12.68	172	11981	0.29	ng	0.00
25) Fluoranthene-d10	18.85	212	22131	0.31	ng	0.00
29) Terphenyl-d14	19.48	244	17204	0.27	ng	0.00

Target Compounds

Target Compounds	R.T.	QIon	Response	Conc	Units	Qvalue
2) 1,4-Dioxane	3.01	88	1401	0.199	ng	# 41
3) n-Nitrosodimethylamine	3.33	42	907	0.192	ng	# 74
6) bis(2-Chloroethyl)ether	6.85	93	3732	0.254	ng	99
9) Naphthalene	10.22	128	13740	0.265	ng	98
10) Hexachlorobutadiene	10.52	225	3050	0.267	ng	# 99
12) 2-Methylnaphthalene	11.85	142	9637	0.269	ng	98
16) Acenaphthylene	13.77	152	15501	0.299	ng	99
17) Acenaphthene	14.12	154	8691	0.263	ng	99
18) Fluorene	15.12	166	12067	0.280	ng	99
20) 4-Bromophenyl-phenylether	16.02	248	3728	0.293	ng	97
21) Hexachlorobenzene	16.12	284	3924	0.267	ng	98
22) Pentachlorophenol	16.48	266	3795	0.643	ng	98
23) Phenanthrene	16.85	178	20679	0.297	ng	99
24) Anthracene	16.94	178	19235	0.307	ng	99
26) Fluoranthene	18.88	202	31360	0.372	ng	99
28) Pyrene	19.25	202	30902	0.329	ng	98
30) Benzo(a)anthracene	21.02	228	27589	0.295	ng	94
31) Chrysene	21.07	228	27121	0.285	ng	97
32) Bis(2-ethylhexyl)phthalate	20.98	149	19111	0.512	ng	98
33) Indeno(1,2,3-cd)pyrene	25.22	276	32938	0.287	ng	99
35) Benzo(b)fluoranthene	22.52	252	27786	0.257	ng	# 89
36) Benzo(k)fluoranthene	22.56	252	27623	0.261	ng	# 89
37) Benzo(a)pyrene	23.05	252	28647	0.294	ng	# 88
38) Dibenzo(a,h)anthracene	25.23	278	26810	0.262	ng	# 90
39) Benzo(g,h,i)perylene	25.84	276	28275	0.273	ng	94

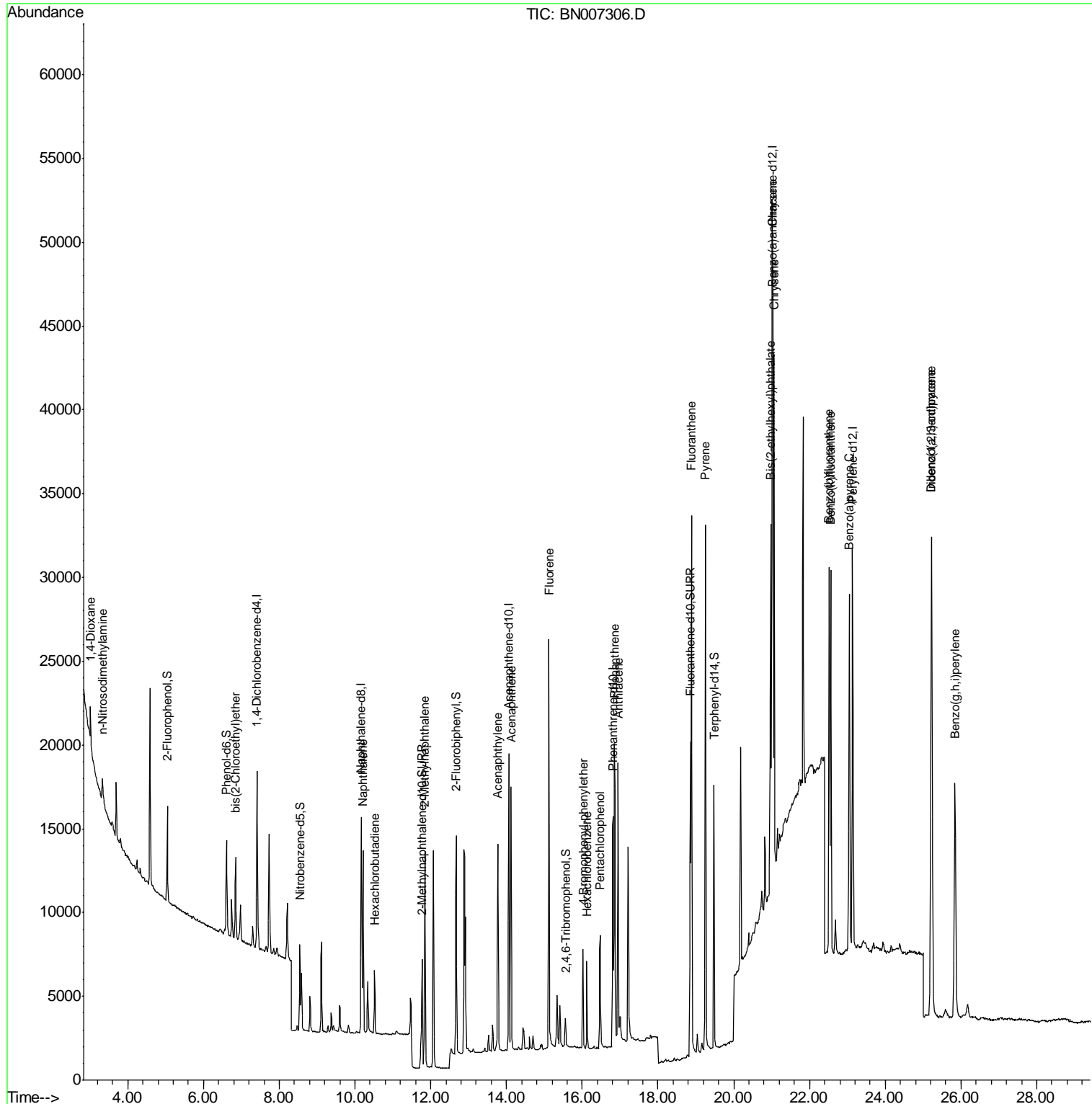
(#) = qualifier out of range (m) = manual integration (+) = signals summed

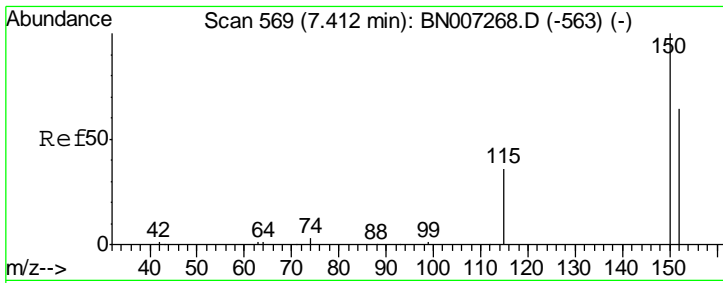
Data Path : Z:\SVOASRV\HPCHEM1\BNA N\DATA\BN082119\
 Data File : BN007306.D
 Acq On : 22 Aug 2019 00:47
 Operator : HP/JU
 Sample : PB122438BS
 Misc :
 ALS Vial : 13 Sample Multiplier: 1

Instrument :
 BNA_N
 Client Sampled :
 PB122438BS

Manual Integrations
APPROVED
 mohammad
 8/26/2019 5:48:05 PM

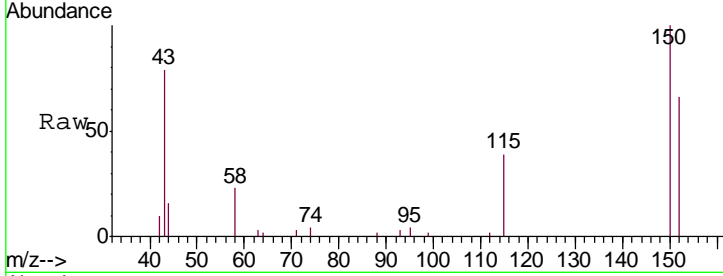
Quant Time: Aug 22 06:43:38 2019
 Quant Method : Z:\SVOASRV\HPCHEM1\BNA N\METHODS\8270-SIM-BN082019.M
 Quant Title : ASP BNA STANDARDS FOR 5 POINT CALIBRATION
 QLast Update : Tue Aug 20 18:52:43 2019
 Response via : Initial Calibration





#1
 1,4-Dichlorobenzene-d4
 Concen: 0.400 ng
 RT: 7.41 min Scan# 569
 Delta R.T. -0.00 min
 Lab File: BN007306.D
 Acq: 22 Aug 2019 00:47

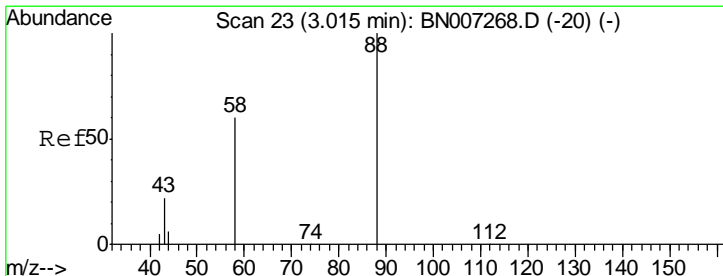
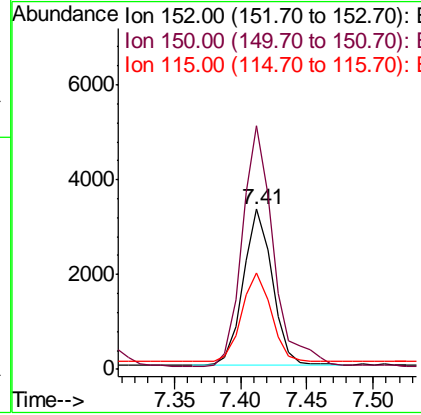
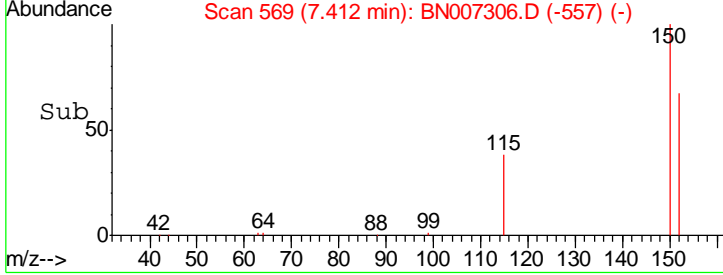
Instrument :
 BNA_N
ClientSampled :
 PB122438BS



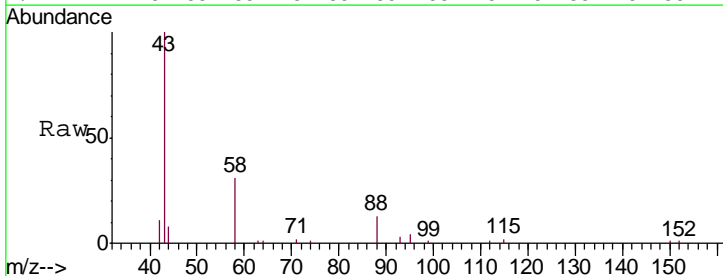
Tgt Ion	Resp	Lower	Upper
152	100		
150	152.3	123.8	185.8
115	60.0	47.3	70.9

Manual Integrations
APPROVED

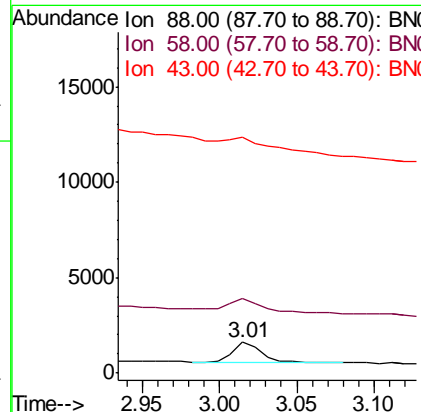
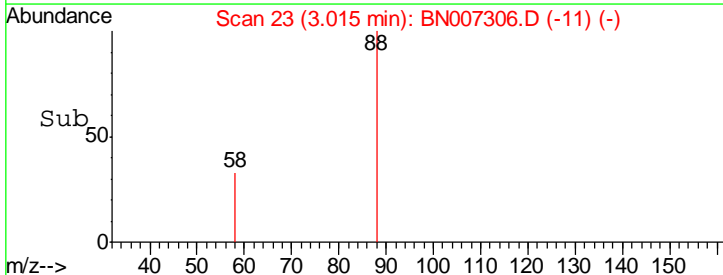
mohammad
 8/26/2019 5:48:05 PM

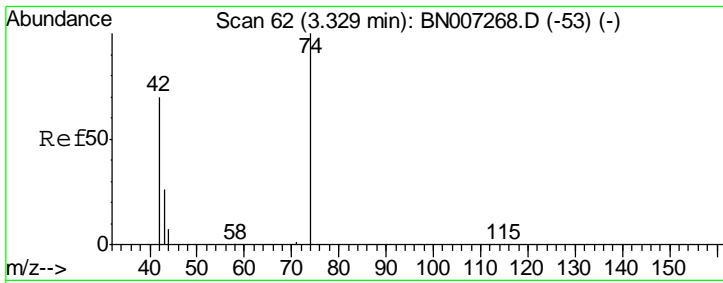


#2
 1,4-Dioxane
 Concen: 0.199 ng
 RT: 3.01 min Scan# 23
 Delta R.T. -0.00 min
 Lab File: BN007306.D
 Acq: 22 Aug 2019 00:47



Tgt Ion	Resp	Lower	Upper
88	100		
58	103.5	45.5	68.3#
43	0.0	20.4	30.6#





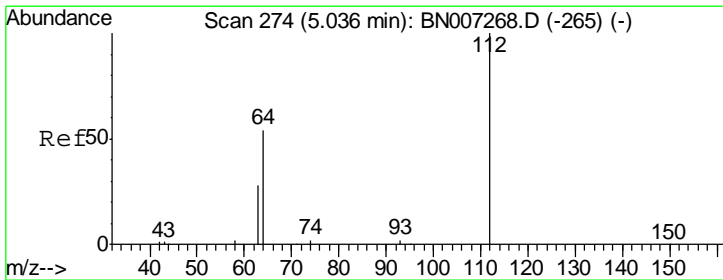
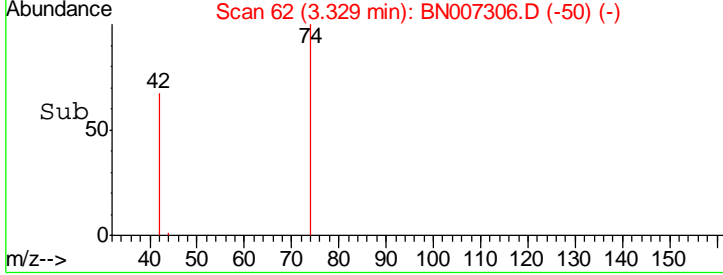
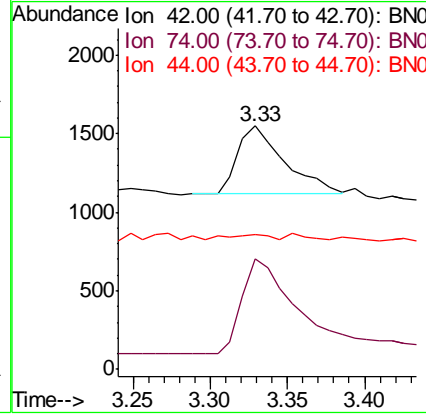
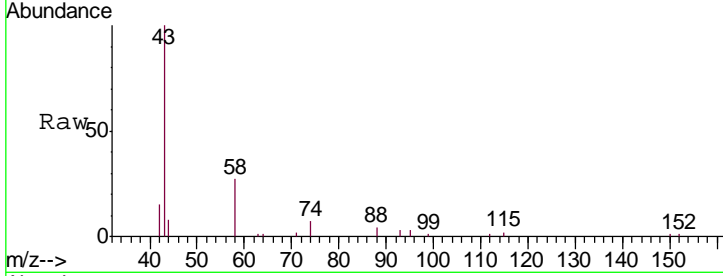
#3
 n-Nitrosodimethylamine
 Concen: 0.192 ng
 RT: 3.33 min Scan# 62
 Delta R.T. -0.00 min
 Lab File: BN007306.D
 Acq: 22 Aug 2019 00:47

Instrument :
 BNA_N
ClientSampled :
 PB122438BS

Tgt Ion	Resp	Lower	Upper
42	100		
74	168.7	109.0	163.4#
44	7.6	4.2	6.2#

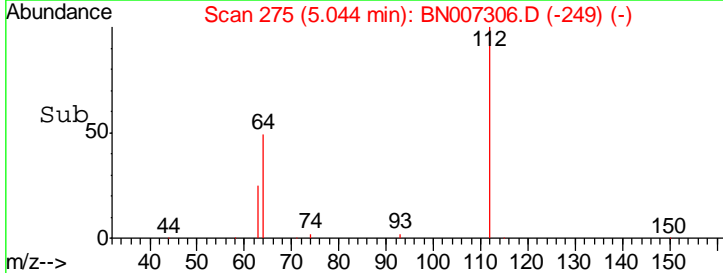
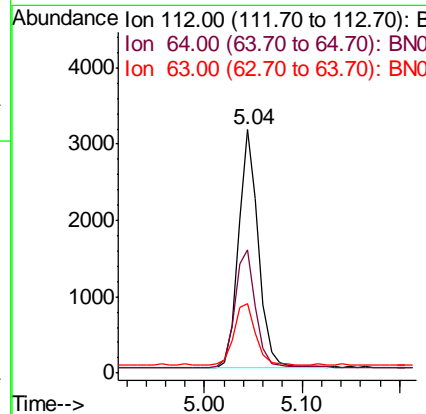
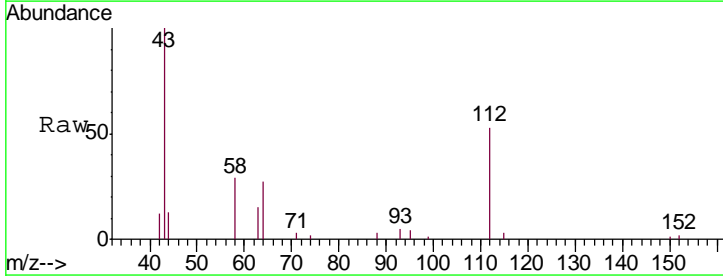
Manual Integrations
APPROVED

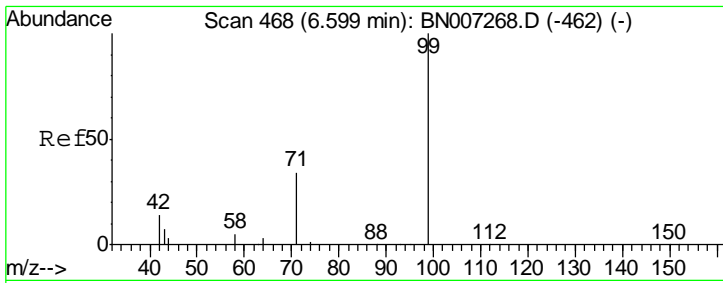
mohammad
 8/26/2019 5:48:05 PM



#4
 2-Fluorophenol
 Concen: 0.292 ng
 RT: 5.04 min Scan# 275
 Delta R.T. 0.01 min
 Lab File: BN007306.D
 Acq: 22 Aug 2019 00:47

Tgt Ion	Resp	Lower	Upper
112	100		
64	52.5	41.8	62.8
63	27.9	22.6	34.0





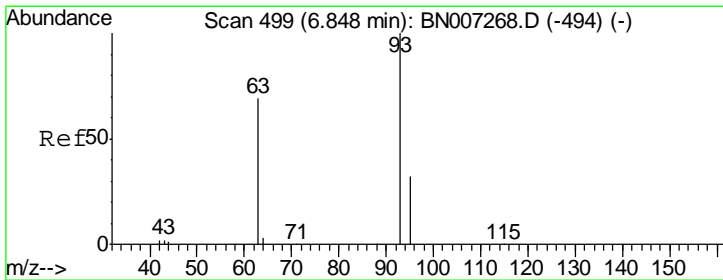
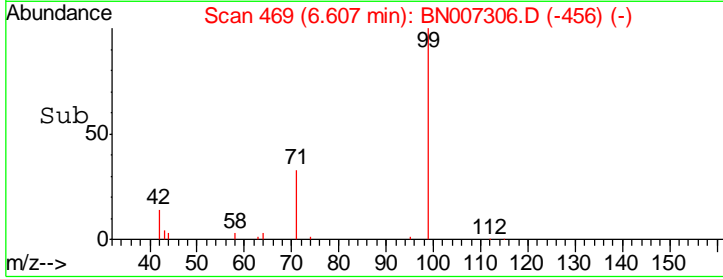
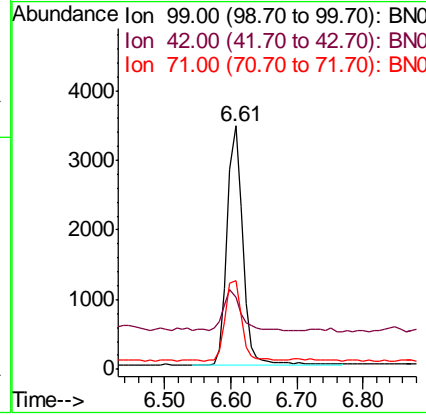
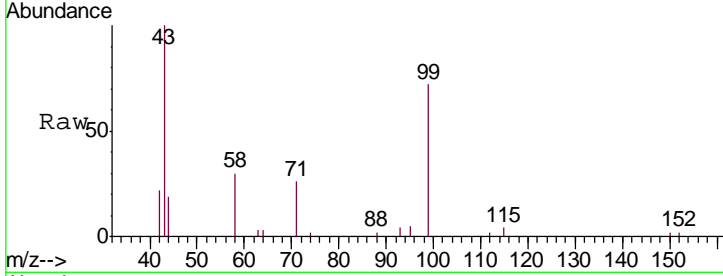
#5
 Phenol-d6
 Concen: 0.312 ng
 RT: 6.61 min Scan# 469
 Delta R.T. 0.01 min
 Lab File: BN007306.D
 Acq: 22 Aug 2019 00:47

Instrument :
 BNA_N
ClientSampled :
 PB122438BS

Tgt Ion	Resp	Lower	Upper
99	5500		
42	19.1	14.3	21.5
71	35.3	27.3	40.9

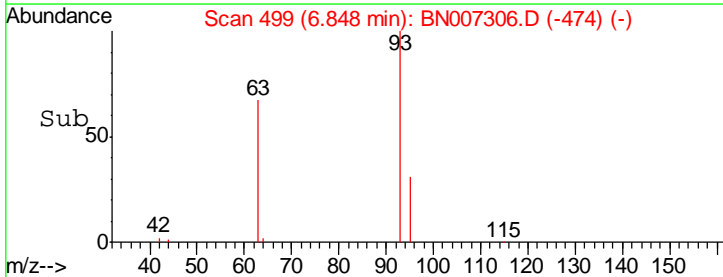
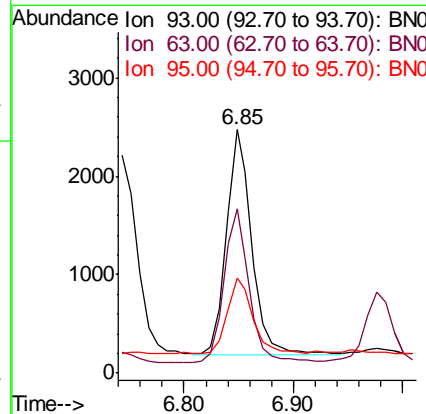
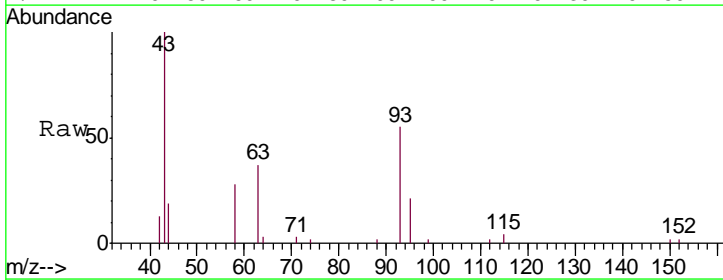
Manual Integrations
APPROVED

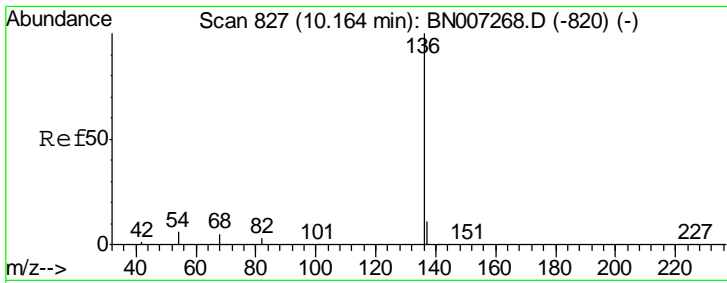
mohammad
 8/26/2019 5:48:05 PM



#6
 bis(2-Chloroethyl)ether
 Concen: 0.254 ng
 RT: 6.85 min Scan# 499
 Delta R.T. -0.00 min
 Lab File: BN007306.D
 Acq: 22 Aug 2019 00:47

Tgt Ion	Resp	Lower	Upper
93	3732		
63	67.9	54.4	81.6
95	32.8	25.5	38.3





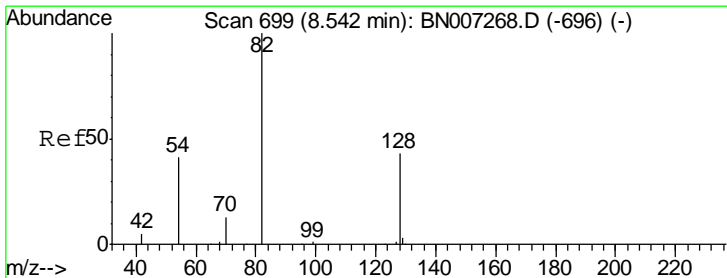
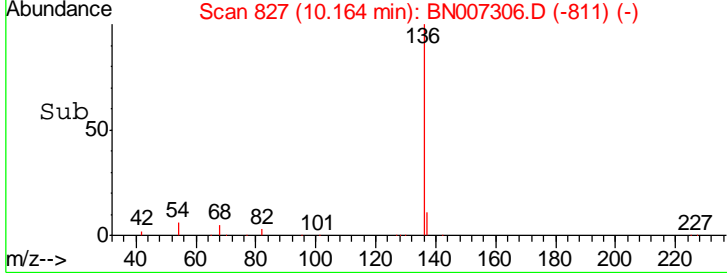
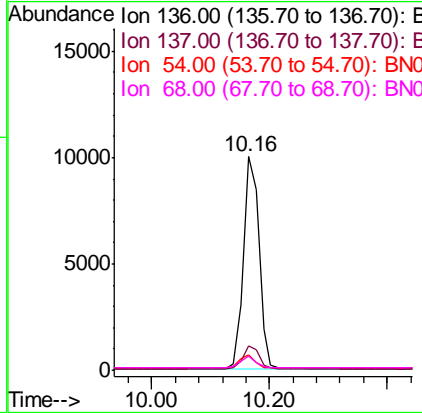
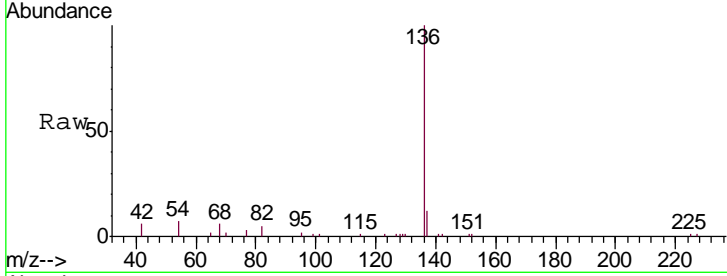
#7
 Naphthalene-d8
 Concen: 0.400 ng
 RT: 10.16 min Scan# 827
 Delta R.T. -0.00 min
 Lab File: BN007306.D
 Acq: 22 Aug 2019 00:47

Instrument :
 BNA_N
ClientSampled :
 PB122438BS

Tgt Ion	Resp	Lower	Upper
136	18280		
137	11.6	9.1	13.7
54	7.4	5.9	8.9
68	6.5	5.6	8.4

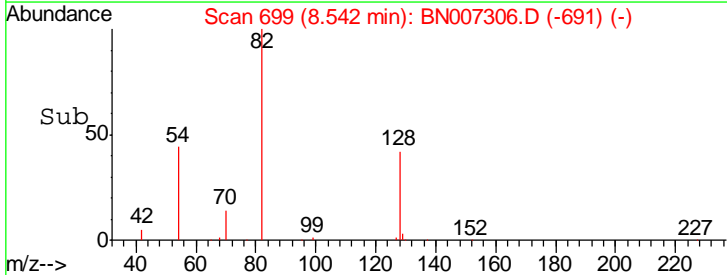
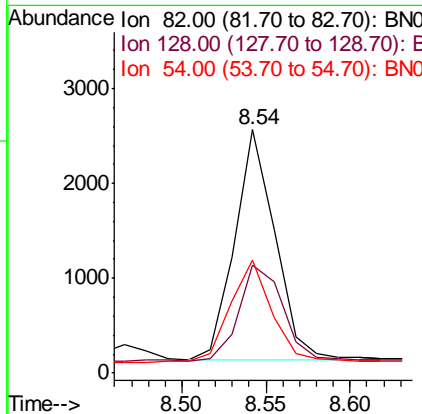
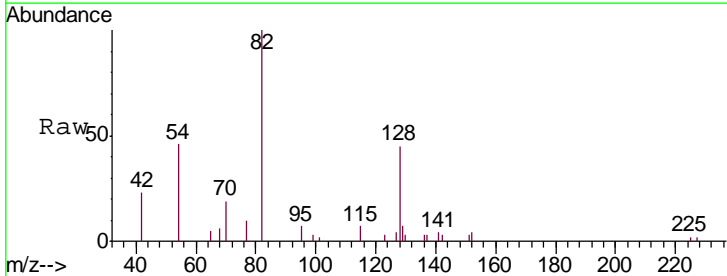
Manual Integrations
APPROVED

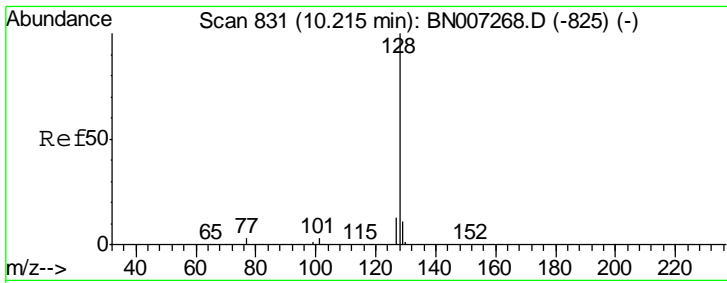
mohammad
 8/26/2019 5:48:05 PM



#8
 Nitrobenzene-d5
 Concen: 0.290 ng
 RT: 8.54 min Scan# 699
 Delta R.T. -0.00 min
 Lab File: BN007306.D
 Acq: 22 Aug 2019 00:47

Tgt Ion	Resp	Lower	Upper
82	4073		
128	44.5	35.8	53.6
54	46.3	34.7	52.1





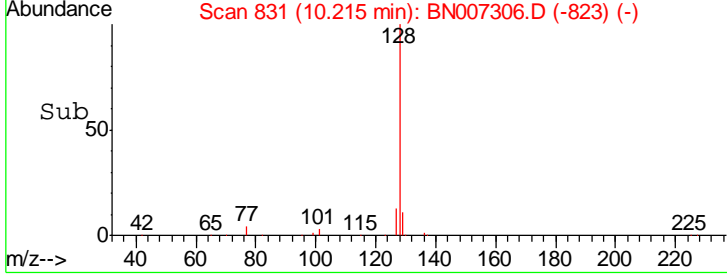
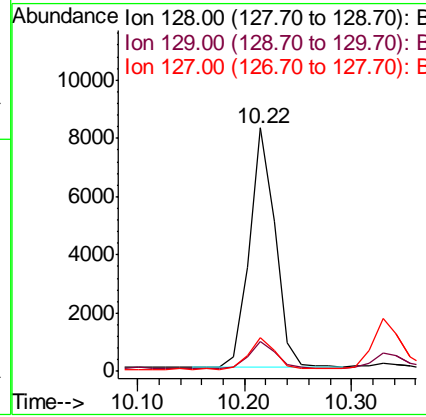
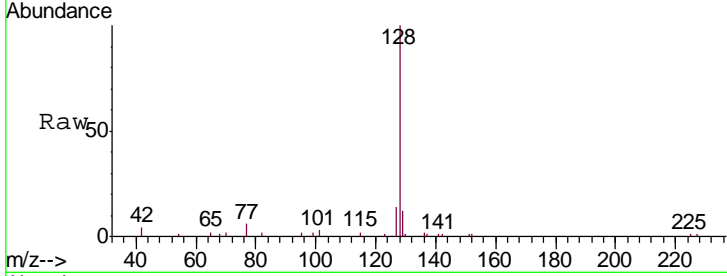
#9
 Naphthalene
 Concen: 0.265 ng
 RT: 10.22 min Scan# 831
 Delta R.T. -0.00 min
 Lab File: BN007306.D
 Acq: 22 Aug 2019 00:47

Instrument :
 BNA_N
ClientSampled :
 PB122438BS

Tgt Ion	Resp	Lower	Upper
128	13740		
129	12.0	9.1	13.7
127	13.9	10.6	16.0

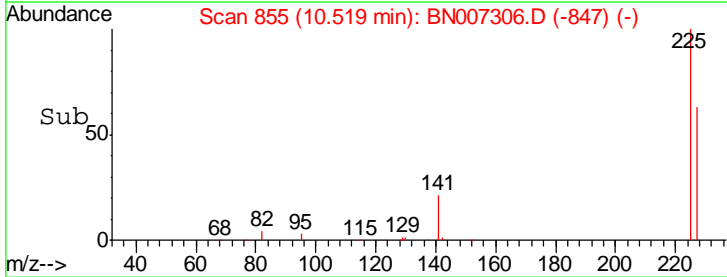
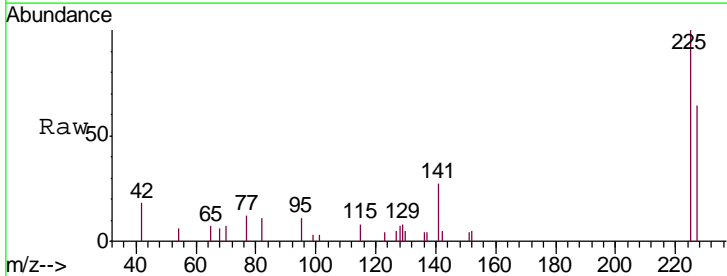
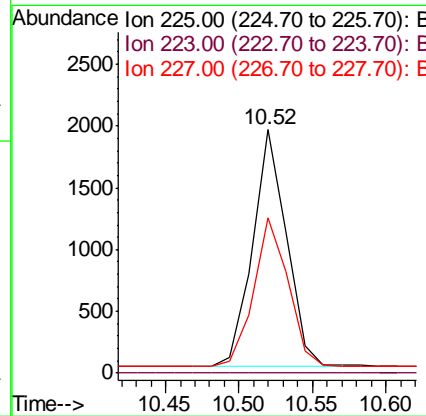
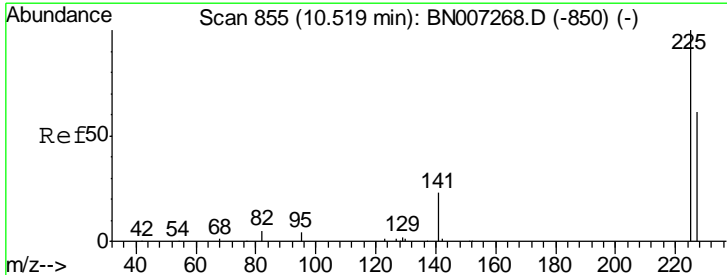
Manual Integrations
APPROVED

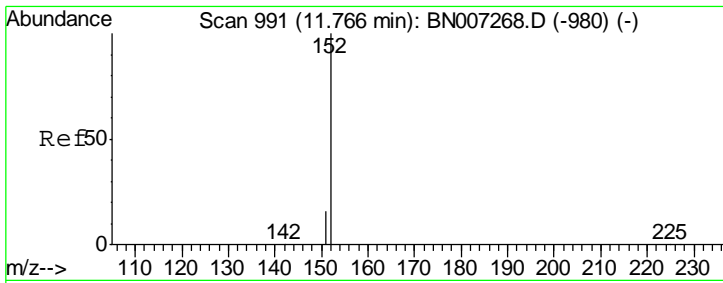
mohammad
 8/26/2019 5:48:05 PM



#10
 Hexachlorobutadiene
 Concen: 0.267 ng
 RT: 10.52 min Scan# 855
 Delta R.T. -0.00 min
 Lab File: BN007306.D
 Acq: 22 Aug 2019 00:47

Tgt Ion	Resp	Lower	Upper
225	3050		
223	0.0	0.0	0.0
227	63.4	50.2	75.2





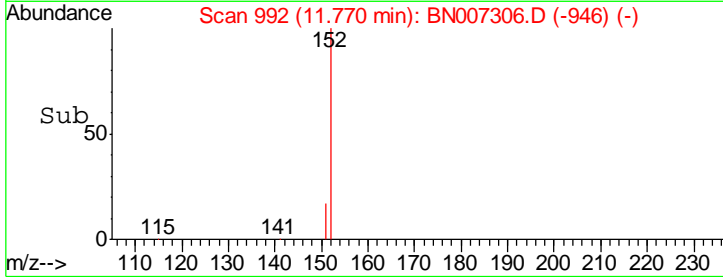
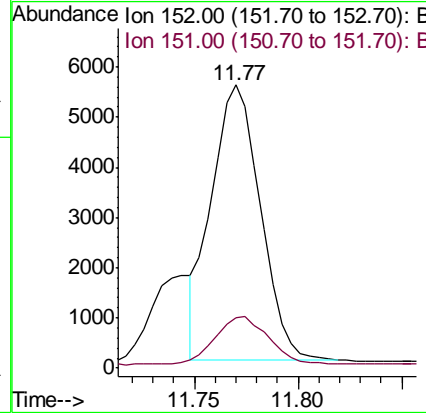
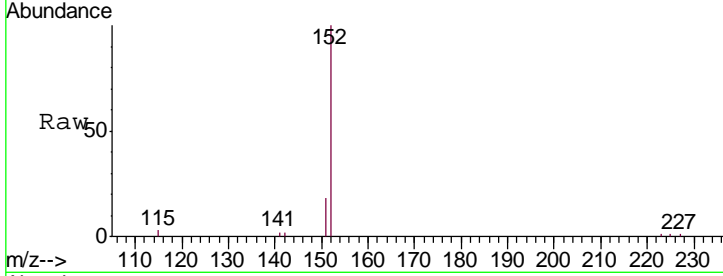
#11
 2-Methylnaphthalene-d10
 Concen: 0.285 ng m
 RT: 11.77 min Scan# 992
 Delta R.T. 0.00 min
 Lab File: BN007306.D
 Acq: 22 Aug 2019 00:47

Instrument :
 BNA_N
ClientSampled :
 PB122438BS

Tgt Ion	Resp	Lower	Upper
152	100		
151	19.7	15.2	22.8

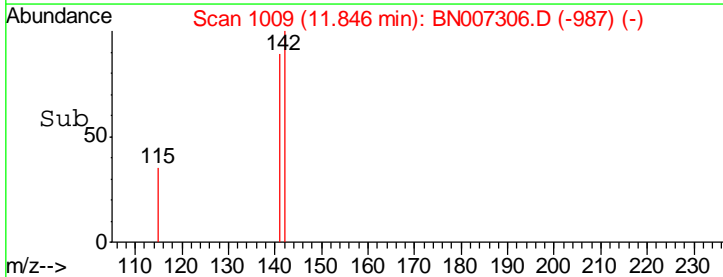
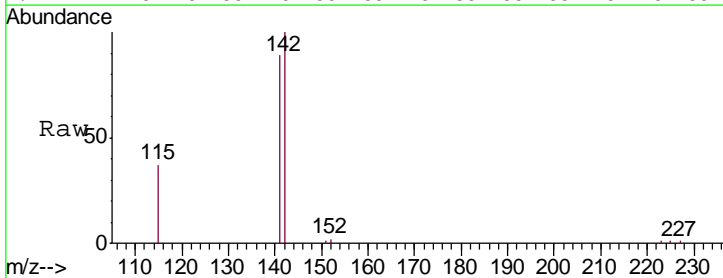
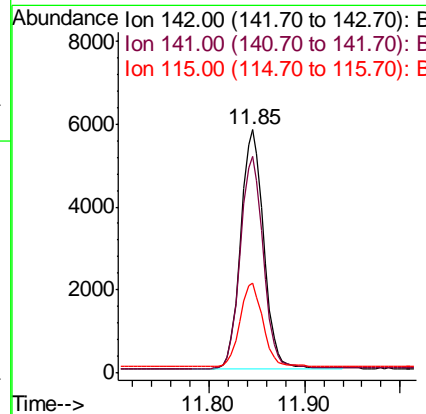
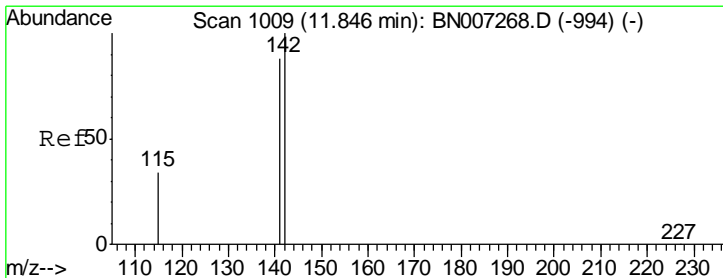
Manual Integrations
APPROVED

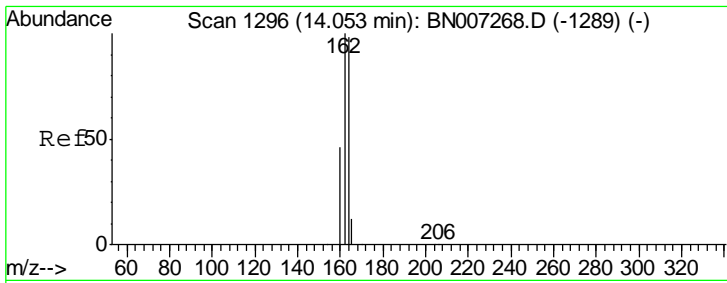
mohammad
 8/26/2019 5:48:05 PM



#12
 2-Methylnaphthalene
 Concen: 0.269 ng
 RT: 11.85 min Scan# 1009
 Delta R.T. -0.00 min
 Lab File: BN007306.D
 Acq: 22 Aug 2019 00:47

Tgt Ion	Resp	Lower	Upper
142	100		
141	89.2	70.7	106.1
115	37.2	28.1	42.1





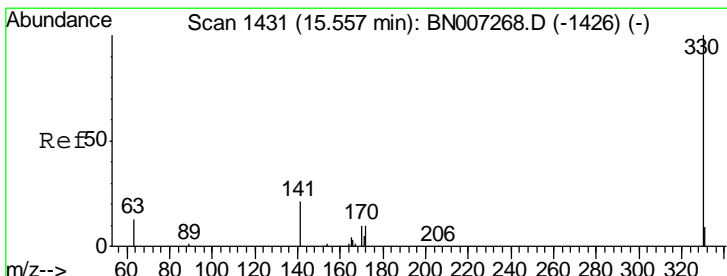
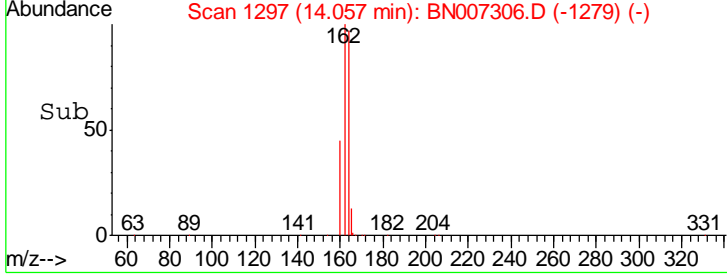
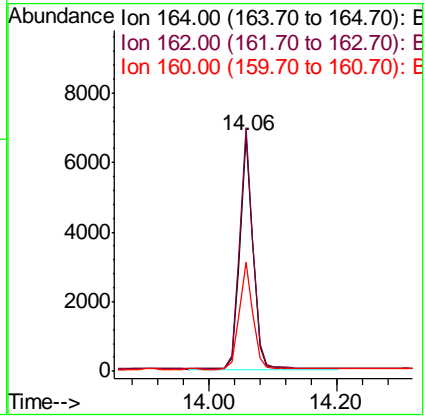
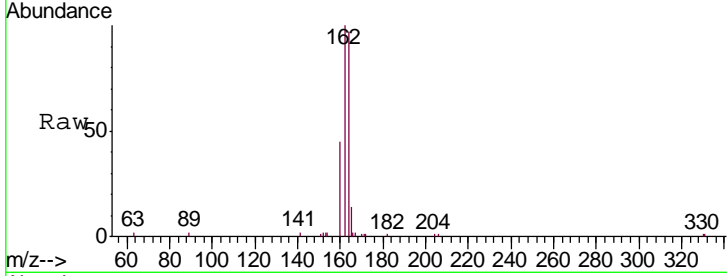
#13
 Acenaphthene-d10
 Concen: 0.400 ng
 RT: 14.06 min Scan# 1297
 Delta R.T. 0.00 min
 Lab File: BN007306.D
 Acq: 22 Aug 2019 00:47

Instrument :
 BNA_N
Client Sampled :
 PB122438BS

Tgt Ion	Resp	Lower	Upper
164	100		
162	103.3	82.0	123.0
160	46.6	38.2	57.4

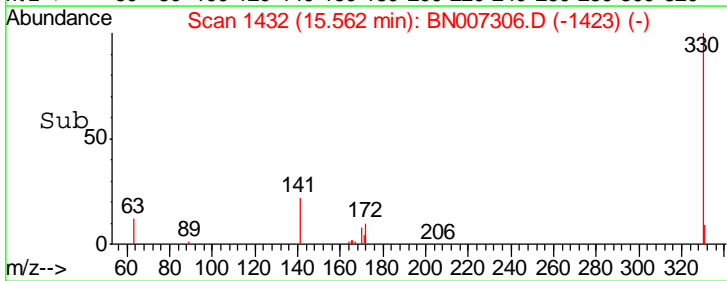
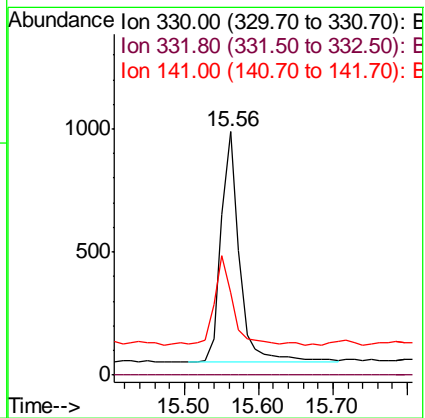
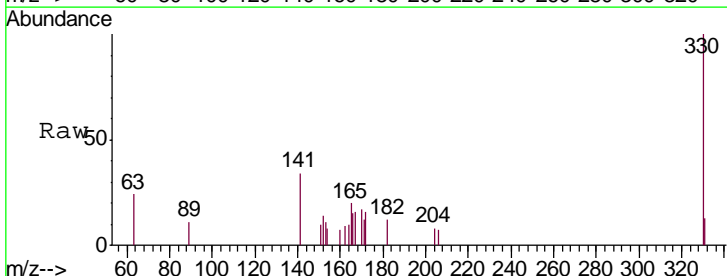
Manual Integrations
APPROVED

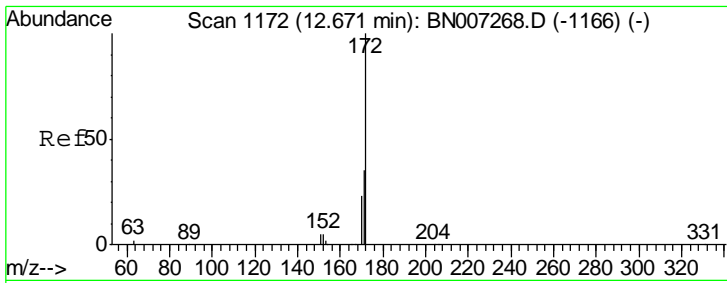
mohammad
 8/26/2019 5:48:05 PM



#14
 2,4,6-Tribromophenol
 Concen: 0.295 ng
 RT: 15.56 min Scan# 1432
 Delta R.T. 0.00 min
 Lab File: BN007306.D
 Acq: 22 Aug 2019 00:47

Tgt Ion	Resp	Lower	Upper
330	100		
332	0.0	0.0	0.0
141	35.9	30.3	45.5





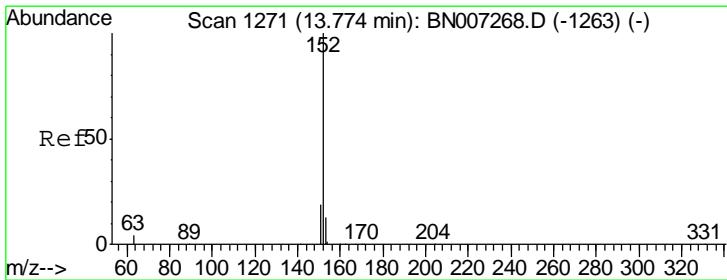
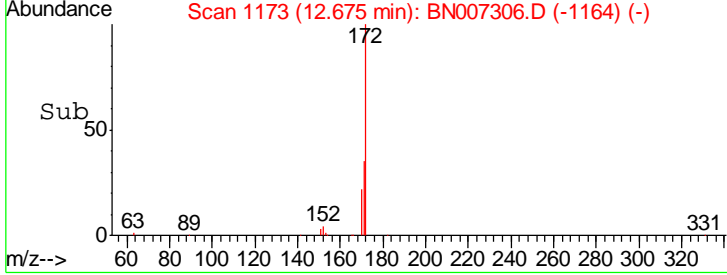
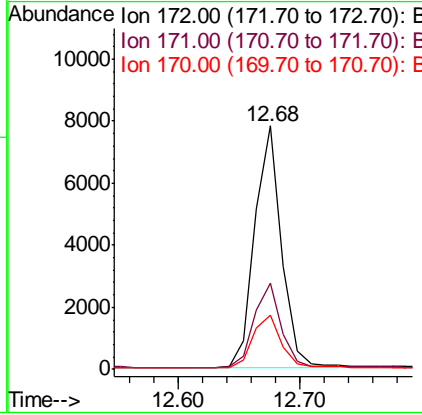
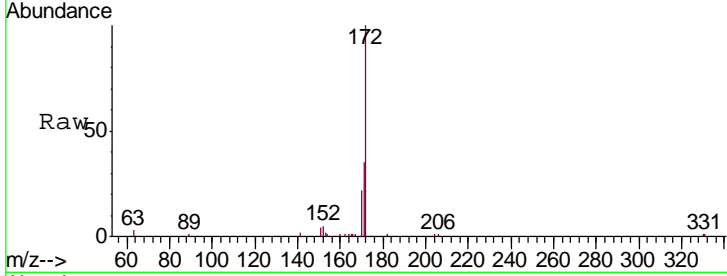
#15
 2-Fluorobiphenyl
 Concen: 0.286 ng
 RT: 12.68 min Scan# 1173
 Delta R.T. 0.00 min
 Lab File: BN007306.D
 Acq: 22 Aug 2019 00:47

Instrument :
 BNA_N
 ClientSampled :
 PB122438BS

Tgt Ion	Resp	Lower	Upper
172	11981		
171	35.4	28.6	43.0
170	22.4	18.7	28.1

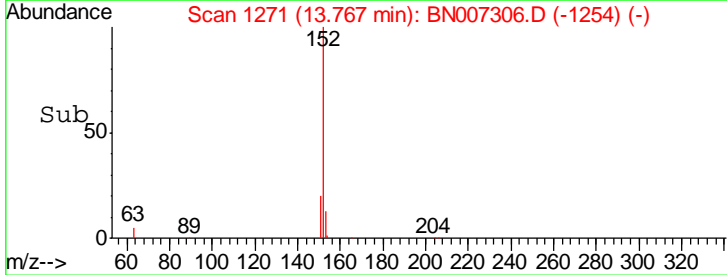
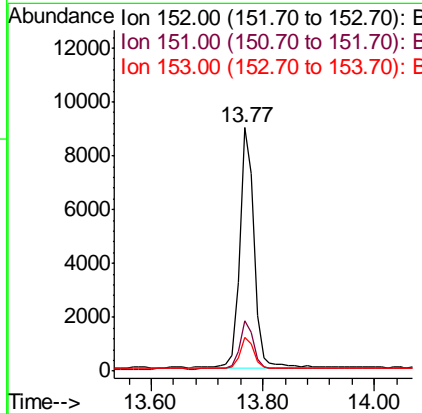
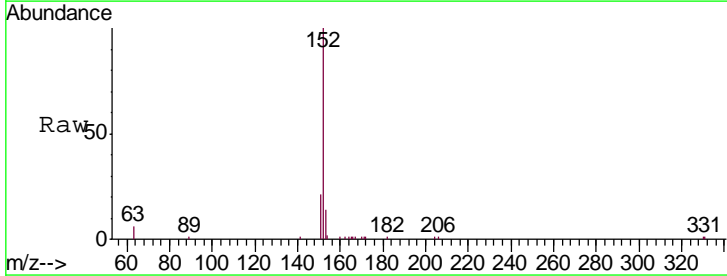
Manual Integrations
 APPROVED

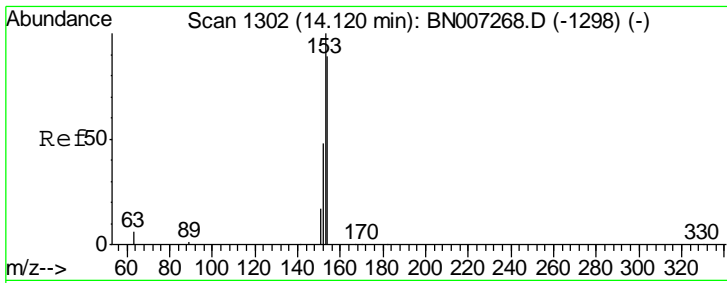
mohammad
 8/26/2019 5:48:05 PM



#16
 Acenaphthylene
 Concen: 0.299 ng
 RT: 13.77 min Scan# 1271
 Delta R.T. -0.01 min
 Lab File: BN007306.D
 Acq: 22 Aug 2019 00:47

Tgt Ion	Resp	Lower	Upper
152	15501		
151	19.6	15.4	23.2
153	13.2	10.1	15.1





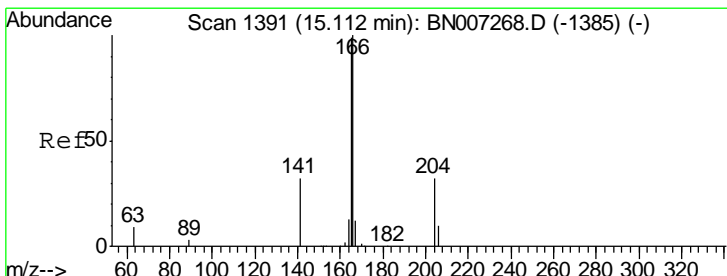
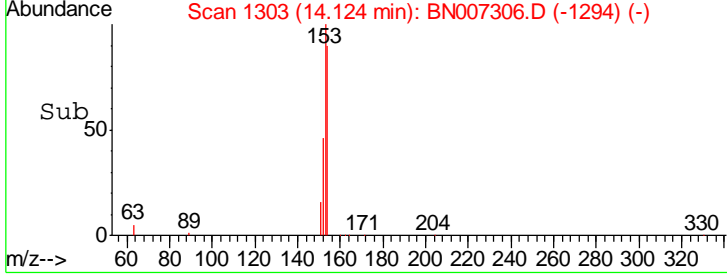
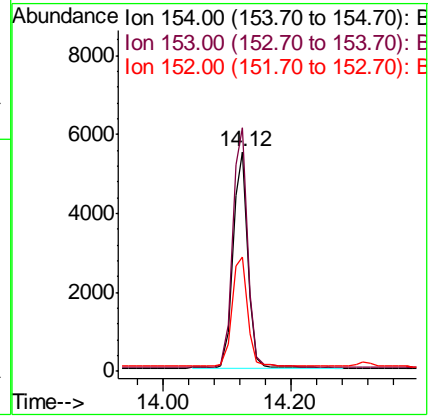
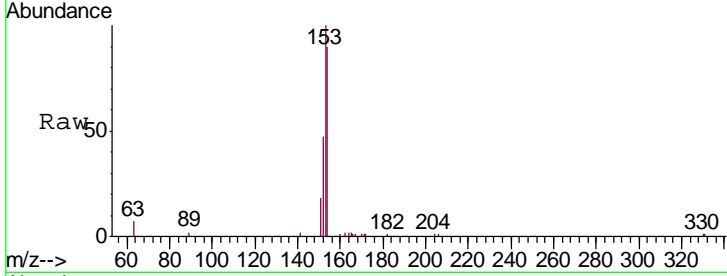
#17
 Acenaphthene
 Concen: 0.263 ng
 RT: 14.12 min Scan# 1303
 Delta R.T. 0.00 min
 Lab File: BN007306.D
 Acq: 22 Aug 2019 00:47

Instrument :
 BNA_N
 ClientSampled :
 PB122438BS

Tgt Ion	Resp	Lower	Upper
154	100		
153	113.0	89.9	134.9
152	54.1	43.9	65.9

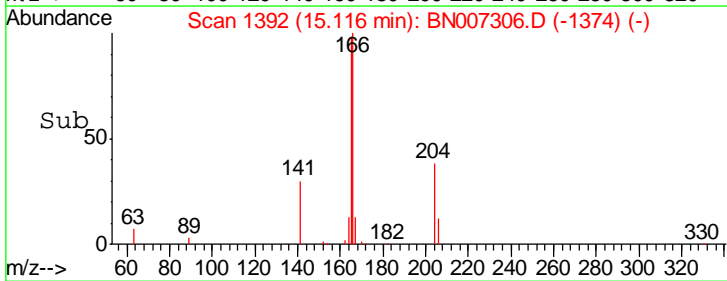
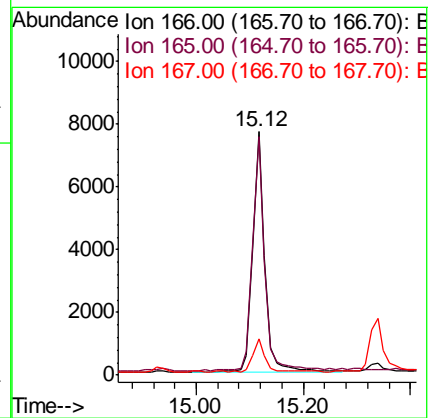
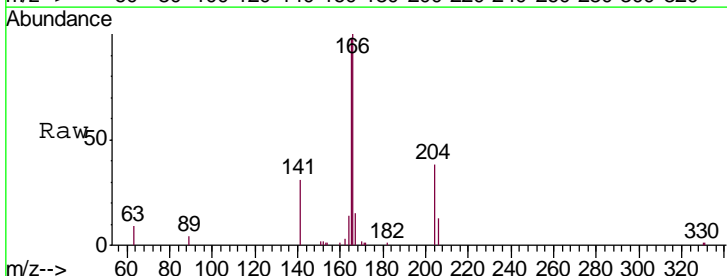
Manual Integrations
 APPROVED

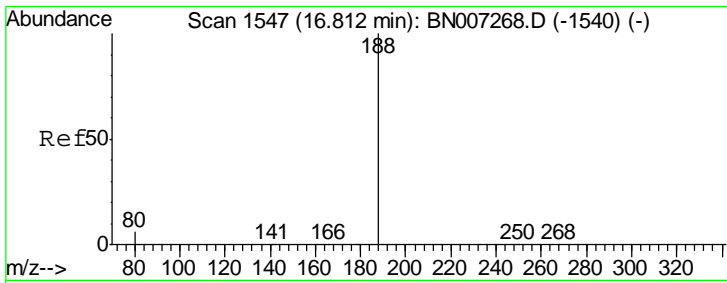
mohammad
 8/26/2019 5:48:05 PM



#18
 Fluorene
 Concen: 0.280 ng
 RT: 15.12 min Scan# 1392
 Delta R.T. 0.00 min
 Lab File: BN007306.D
 Acq: 22 Aug 2019 00:47

Tgt Ion	Resp	Lower	Upper
166	100		
165	98.7	78.3	117.5
167	12.8	11.1	16.7





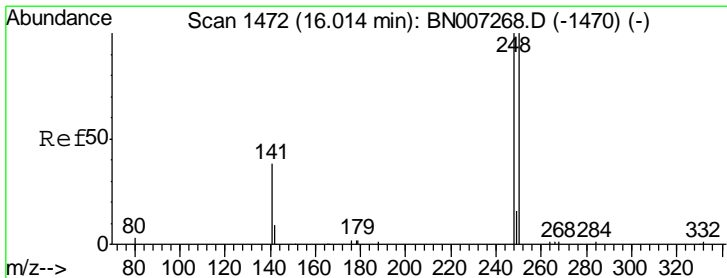
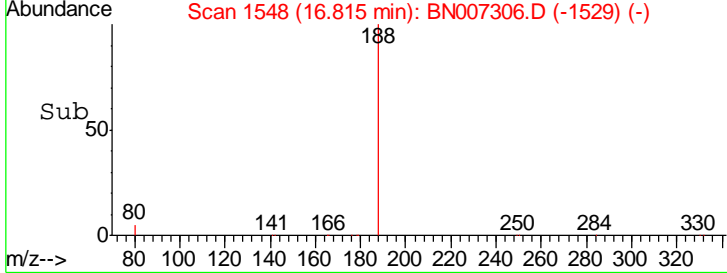
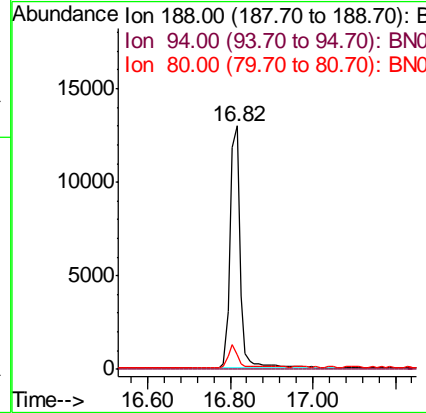
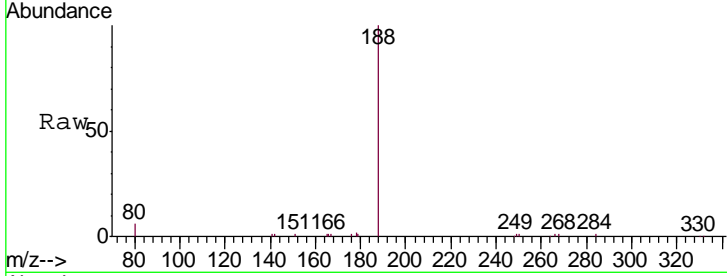
#19
 Phenanthrene-d10
 Concen: 0.400 ng
 RT: 16.82 min Scan# 1548
 Delta R.T. 0.00 min
 Lab File: BN007306.D
 Acq: 22 Aug 2019 00:47

Instrument :
 BNA_N
ClientSampled :
 PB122438BS

Tgt Ion	Ratio	Lower	Upper
188	100		
94	0.0	0.0	0.0
80	6.2	5.2	7.8

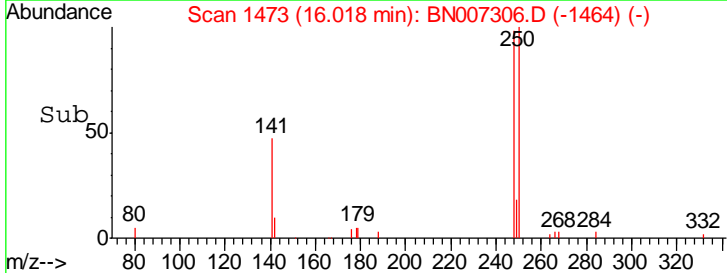
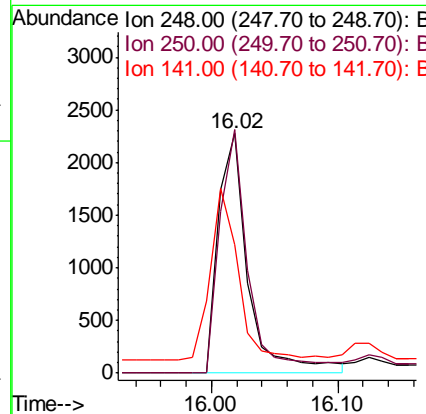
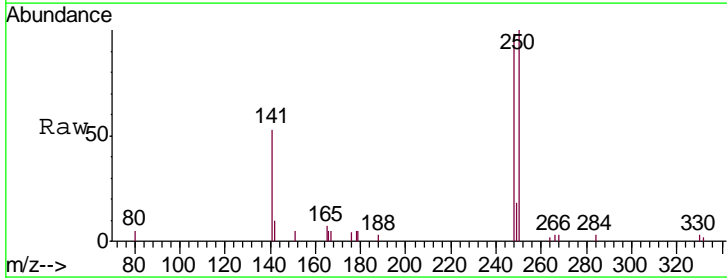
Manual Integrations
APPROVED

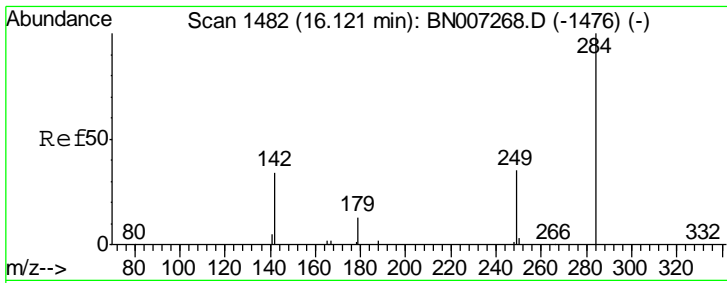
mohammad
 8/26/2019 5:48:05 PM



#20
 4-Bromophenyl-phenylether
 Concen: 0.293 ng
 RT: 16.02 min Scan# 1473
 Delta R.T. 0.00 min
 Lab File: BN007306.D
 Acq: 22 Aug 2019 00:47

Tgt Ion	Ratio	Lower	Upper
248	100		
250	101.7	79.6	119.4
141	53.8	45.1	67.7





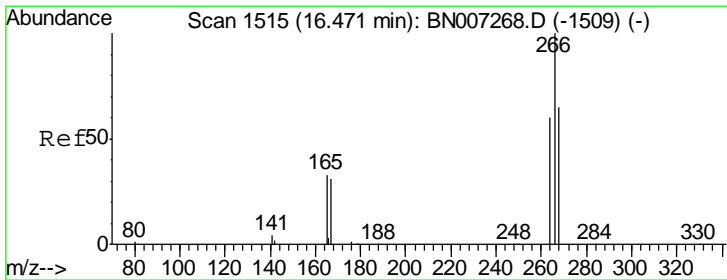
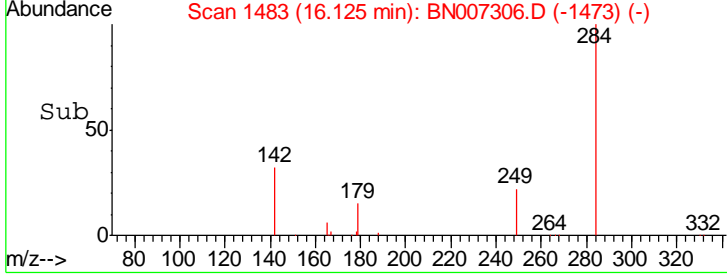
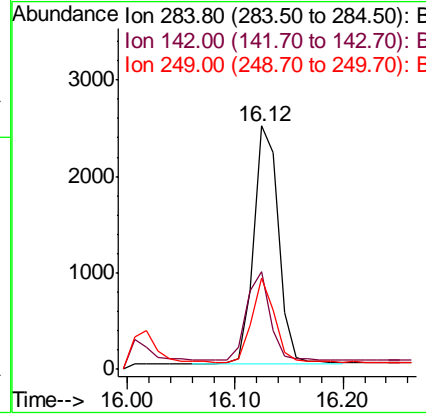
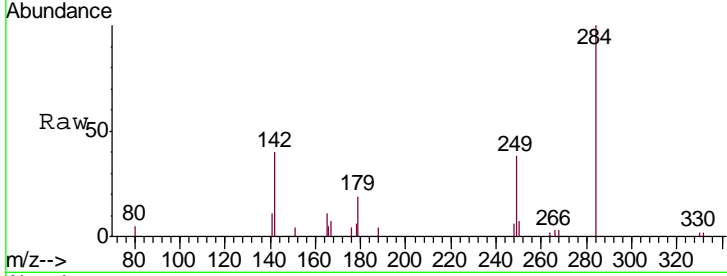
#21
 Hexachlorobenzene
 Concen: 0.267 ng
 RT: 16.12 min Scan# 1483
 Delta R.T. 0.00 min
 Lab File: BN007306.D
 Acq: 22 Aug 2019 00:47

Instrument :
 BNA_N
 ClientSampled :
 PB122438BS

Tgt Ion	Ratio	Lower	Upper
284	100		
142	35.4	29.5	44.3
249	32.1	26.2	39.4

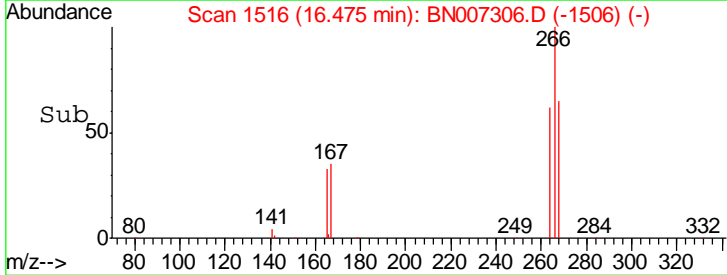
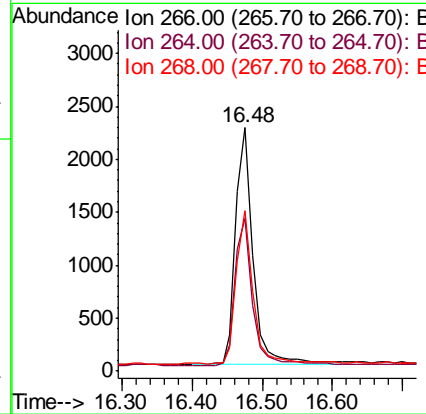
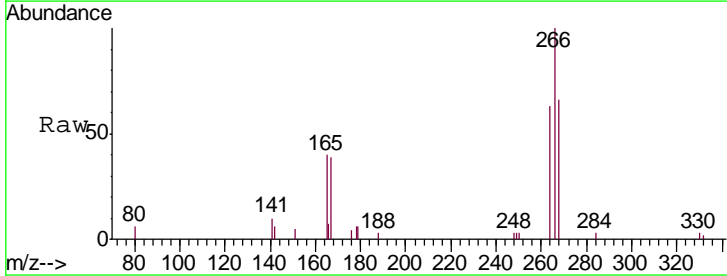
Manual Integrations
 APPROVED

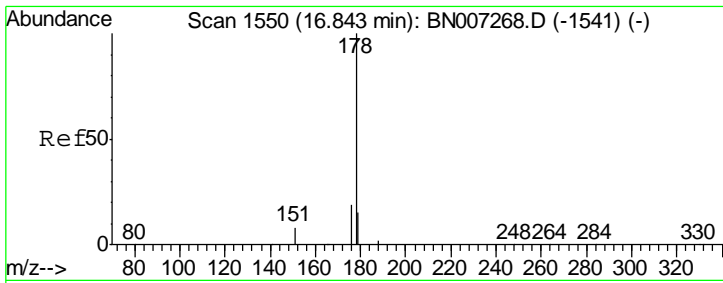
mohammad
 8/26/2019 5:48:05 PM



#22
 Pentachlorophenol
 Concen: 0.643 ng
 RT: 16.48 min Scan# 1516
 Delta R.T. 0.00 min
 Lab File: BN007306.D
 Acq: 22 Aug 2019 00:47

Tgt Ion	Ratio	Lower	Upper
266	100		
264	62.9	48.7	73.1
268	65.8	53.5	80.3



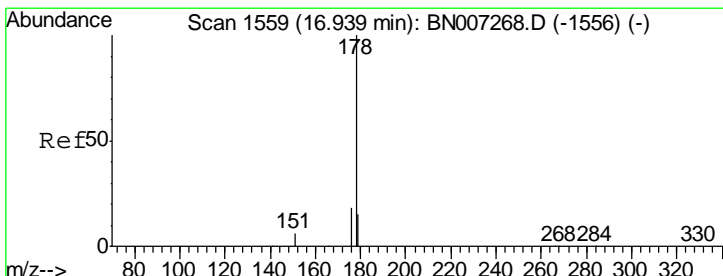
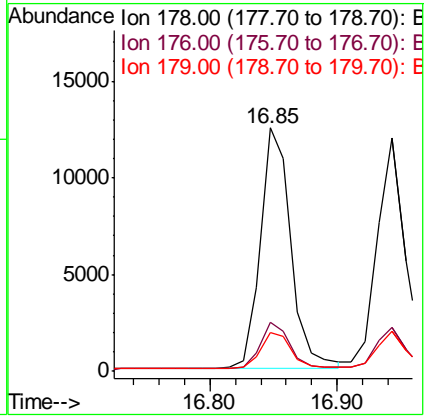
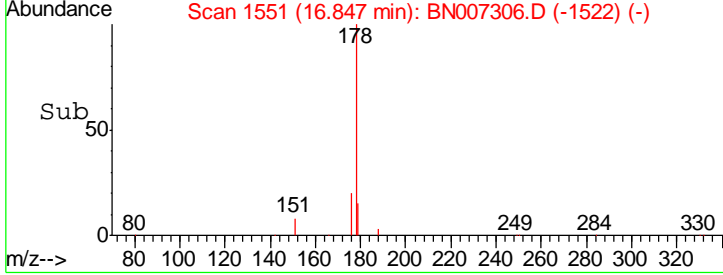
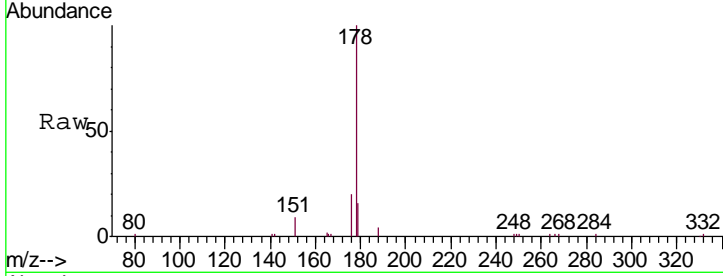


#23
 Phenanthrene
 Concen: 0.297 ng
 RT: 16.85 min Scan# 1551
 Delta R.T. 0.00 min
 Lab File: BN007306.D
 Acq: 22 Aug 2019 00:47

Instrument :
 BNA_N
 ClientSampled :
 PB122438BS

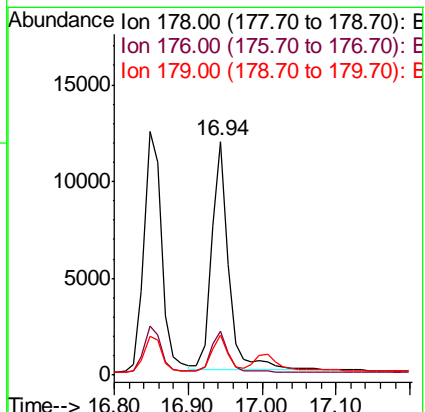
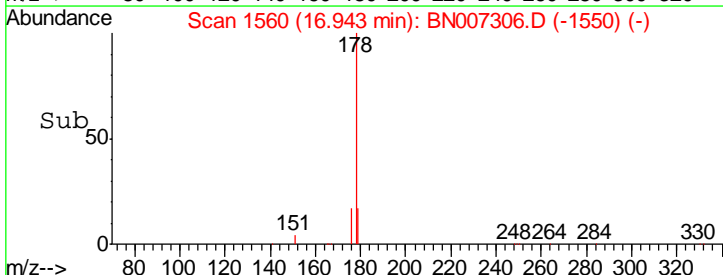
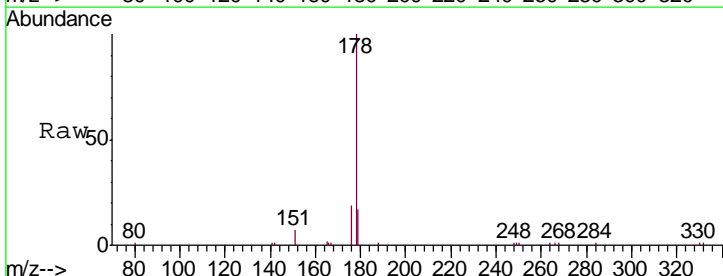
Tgt Ion	Resp	Lower	Upper
178	100		
176	19.9	15.2	22.8
179	15.7	12.3	18.5

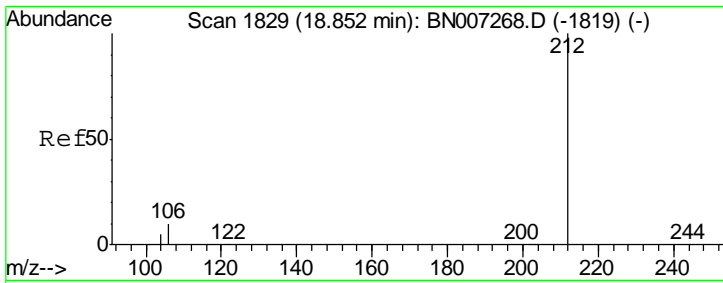
Manual Integrations
APPROVED
 mohammad
 8/26/2019 5:48:05 PM



#24
 Anthracene
 Concen: 0.307 ng
 RT: 16.94 min Scan# 1560
 Delta R.T. 0.00 min
 Lab File: BN007306.D
 Acq: 22 Aug 2019 00:47

Tgt Ion	Resp	Lower	Upper
178	100		
176	18.0	14.3	21.5
179	14.4	12.3	18.5





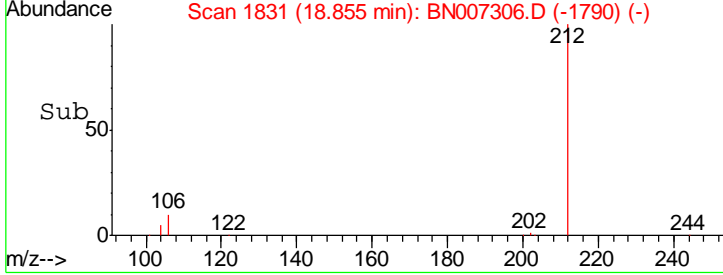
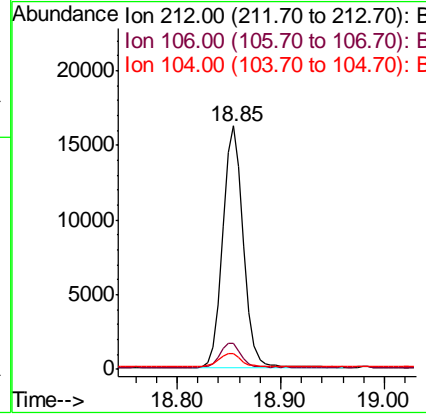
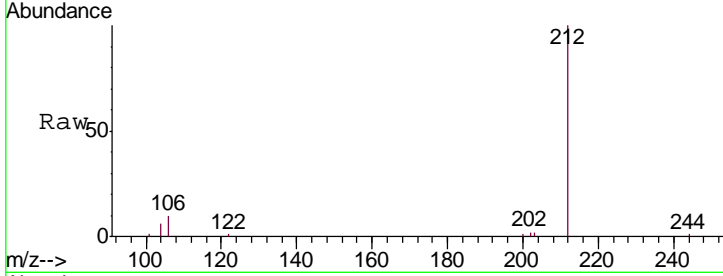
#25
 Fluoranthene-d10
 Concen: 0.315 ng
 RT: 18.85 min Scan# 1831
 Delta R.T. 0.00 min
 Lab File: BN007306.D
 Acq: 22 Aug 2019 00:47

Instrument :
 BNA_N
ClientSampled :
 PB122438BS

Tgt Ion	Resp	Lower	Upper
212	100		
106	10.1	8.2	12.4
104	5.7	4.7	7.1

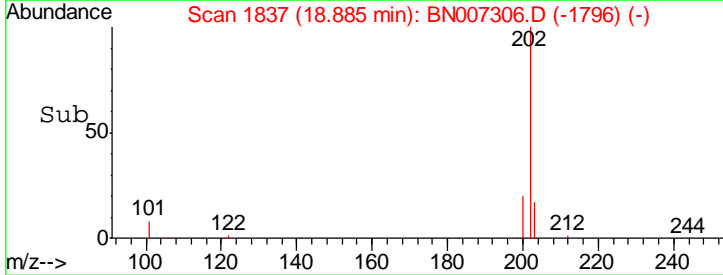
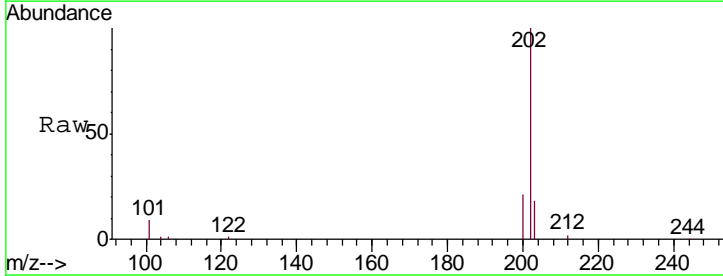
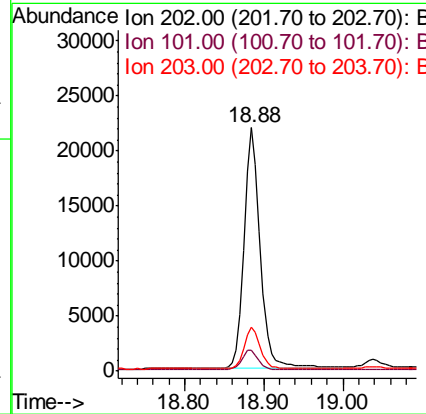
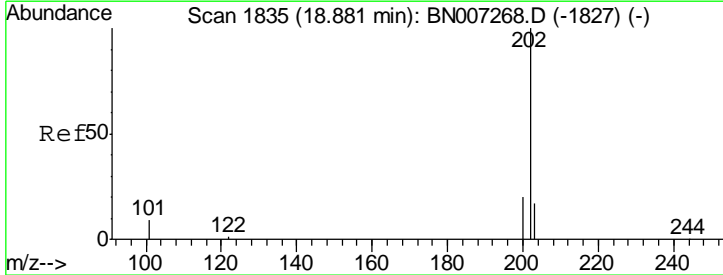
Manual Integrations
APPROVED

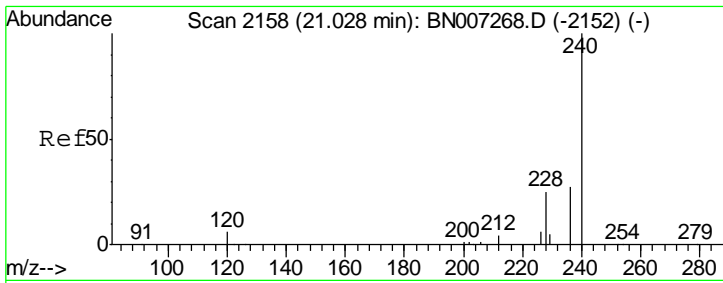
mohammad
 8/26/2019 5:48:05 PM



#26
 Fluoranthene
 Concen: 0.372 ng
 RT: 18.88 min Scan# 1837
 Delta R.T. 0.00 min
 Lab File: BN007306.D
 Acq: 22 Aug 2019 00:47

Tgt Ion	Resp	Lower	Upper
202	100		
101	8.5	7.2	10.8
203	16.8	13.8	20.6





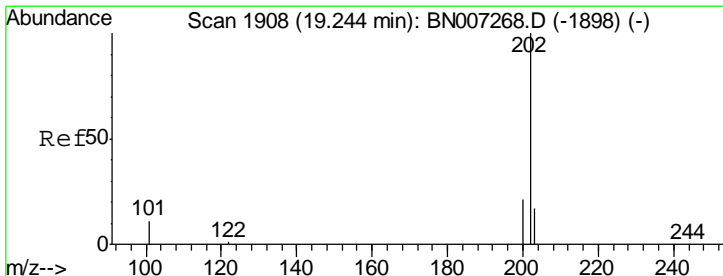
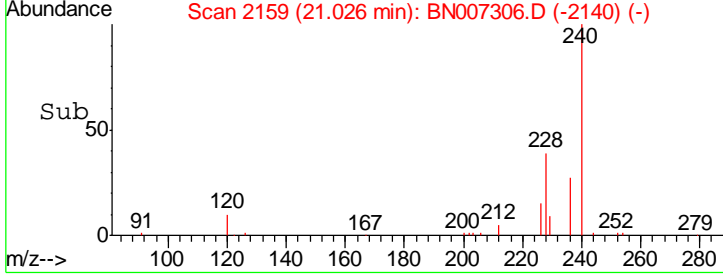
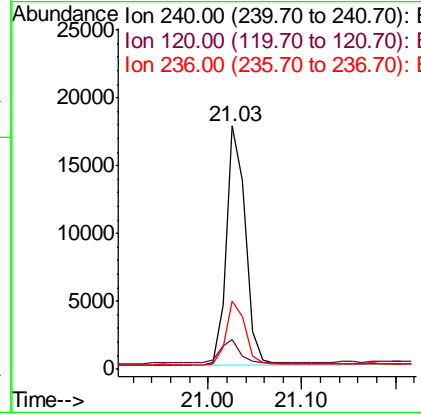
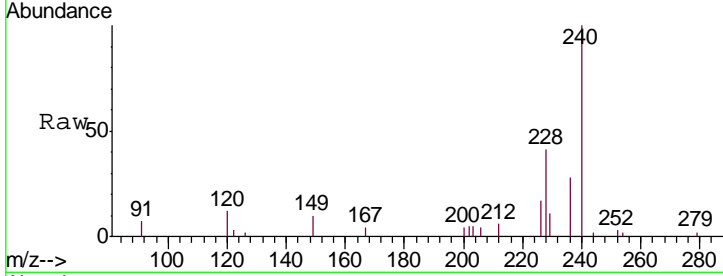
#27
 Chrysene-d12
 Concen: 0.400 ng
 RT: 21.03 min Scan# 2159
 Delta R.T. -0.00 min
 Lab File: BN007306.D
 Acq: 22 Aug 2019 00:47

Instrument :
 BNA_N
 ClientSampled :
 PB122438BS

Tgt Ion	Resp	Lower	Upper
240	25111		
120	12.2	5.6	8.4#
236	28.2	21.6	32.4

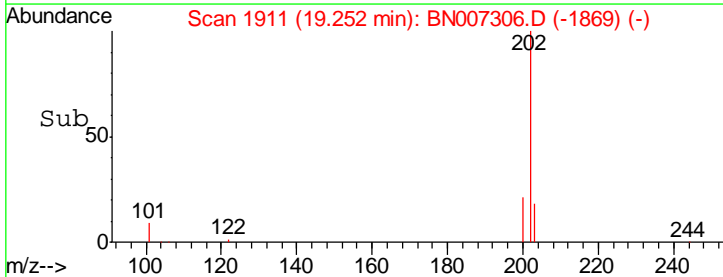
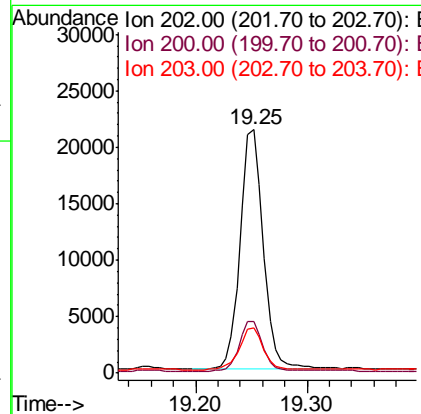
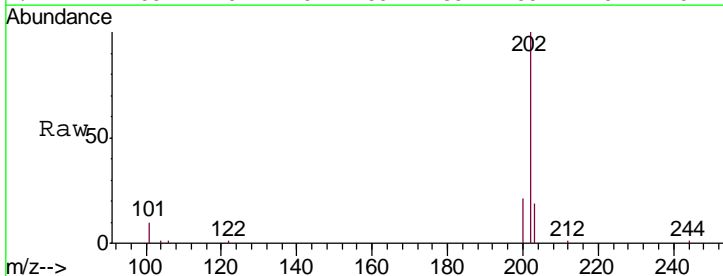
Manual Integrations
 APPROVED

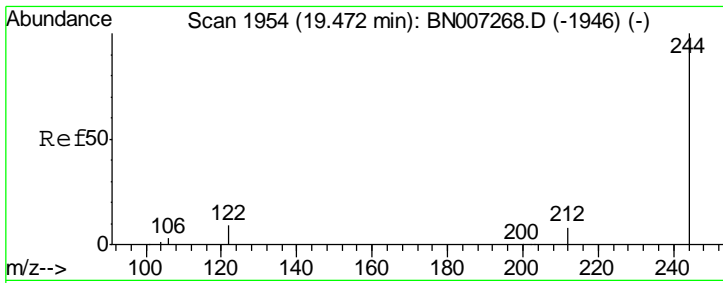
mohammad
 8/26/2019 5:48:05 PM



#28
 Pyrene
 Concen: 0.329 ng
 RT: 19.25 min Scan# 1911
 Delta R.T. 0.01 min
 Lab File: BN007306.D
 Acq: 22 Aug 2019 00:47

Tgt Ion	Resp	Lower	Upper
202	30902		
200	21.0	16.7	25.1
203	18.7	13.9	20.9



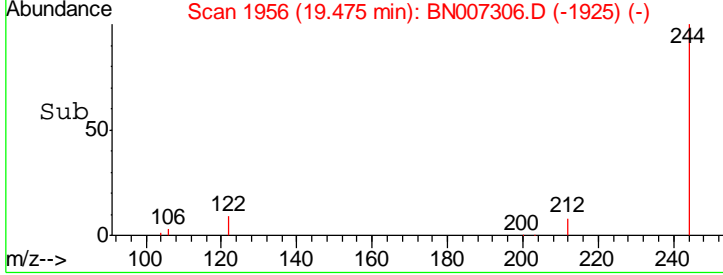
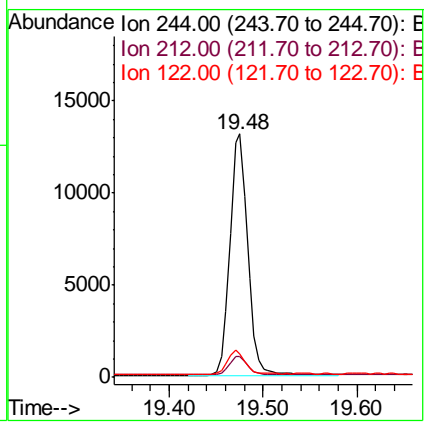
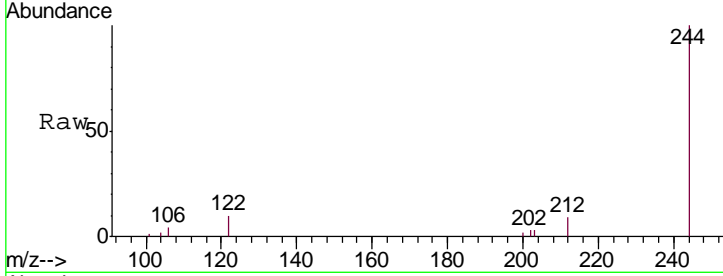


#29
 Terphenyl-d14
 Concen: 0.274 ng
 RT: 19.48 min Scan# 1956
 Delta R.T. 0.00 min
 Lab File: BN007306.D
 Acq: 22 Aug 2019 00:47

Instrument :
 BNA_N
ClientSampled :
 PB122438BS

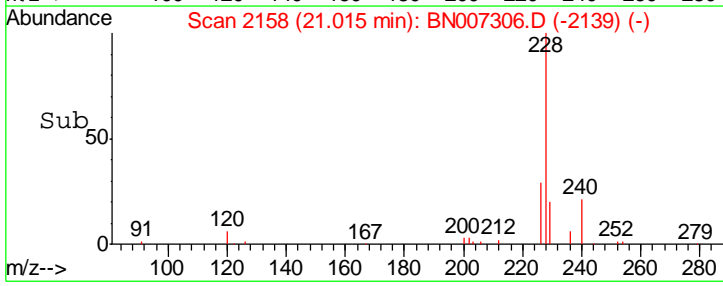
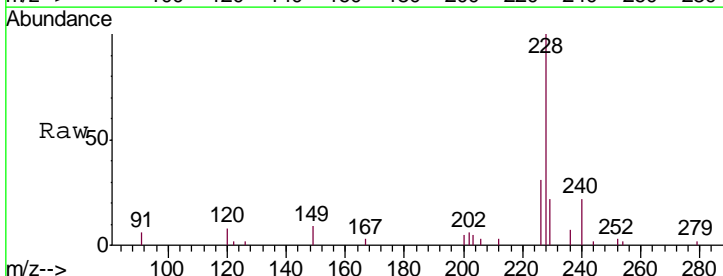
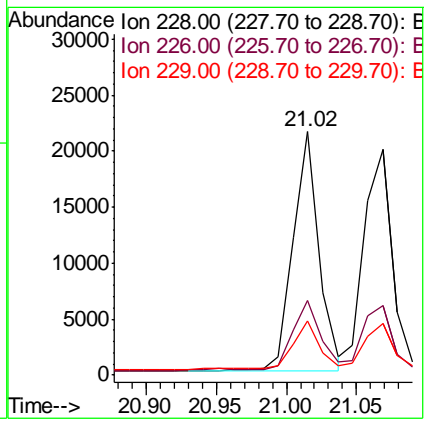
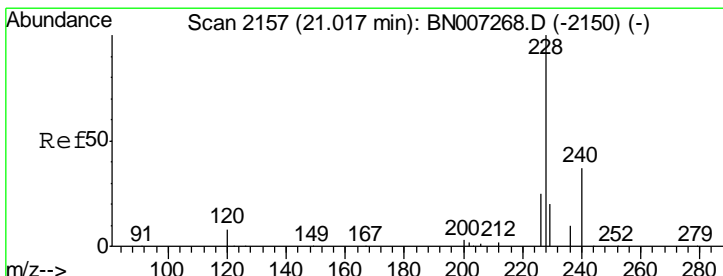
Tgt Ion	Resp	Lower	Upper
244	17204		
244	100		
212	8.7	6.5	9.7
122	9.8	7.9	11.9

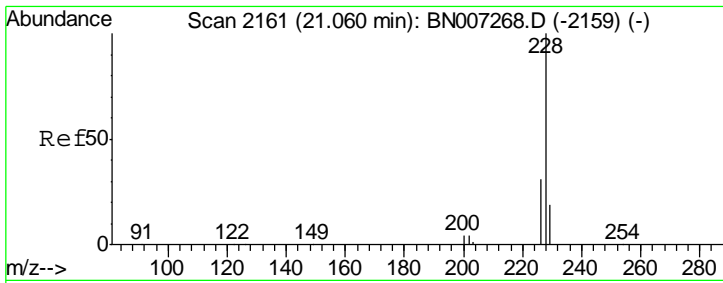
Manual Integrations
APPROVED
 mohammad
 8/26/2019 5:48:05 PM



#30
 Benzo(a)anthracene
 Concen: 0.295 ng
 RT: 21.02 min Scan# 2158
 Delta R.T. -0.00 min
 Lab File: BN007306.D
 Acq: 22 Aug 2019 00:47

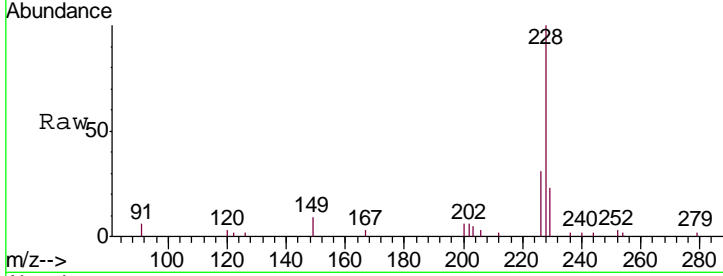
Tgt Ion	Resp	Lower	Upper
228	27589		
228	100		
226	30.5	20.6	30.8
229	22.0	16.9	25.3





#31
 Chrysene
 Concen: 0.285 ng
 RT: 21.07 min Scan# 2163
 Delta R.T. 0.01 min
 Lab File: BN007306.D
 Acq: 22 Aug 2019 00:47

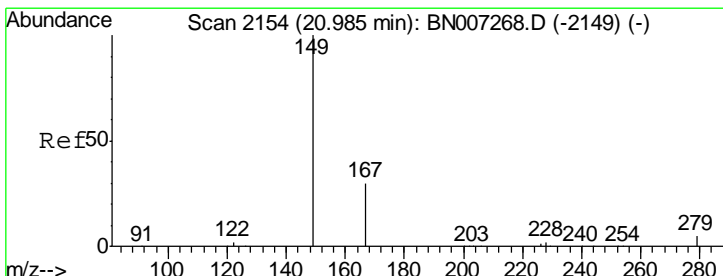
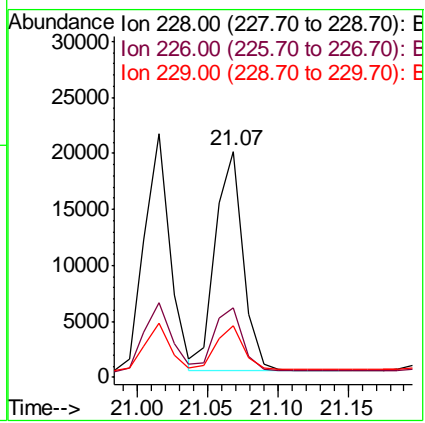
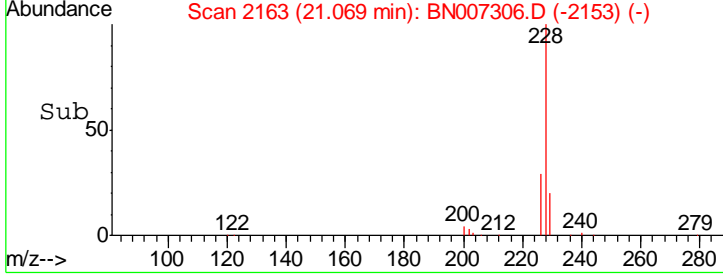
Instrument :
 BNA_N
Client Sampled :
 PB122438BS



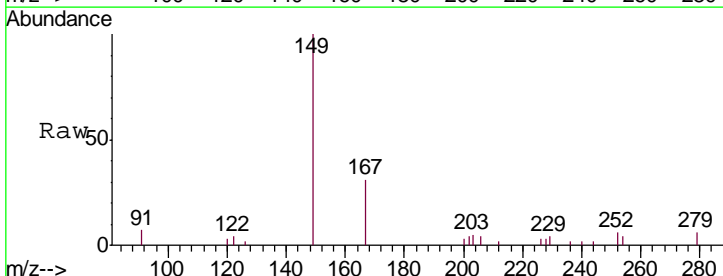
Tgt Ion: 228 Resp: 27121

Ion	Ratio	Lower	Upper
228	100		
226	30.8	24.6	36.8
229	22.6	15.6	23.4

Manual Integrations
APPROVED
 mohammad
 8/26/2019 5:48:05 PM

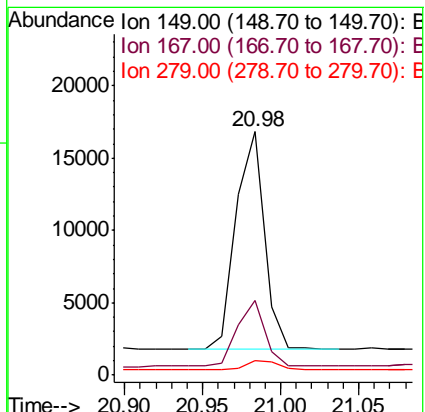
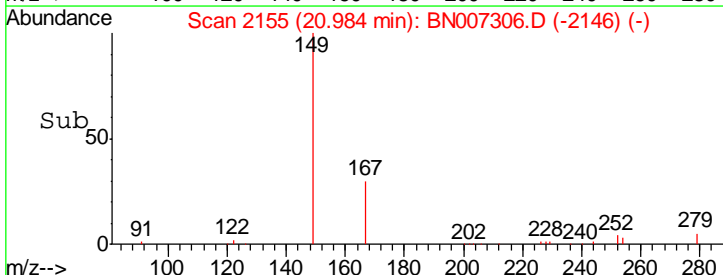


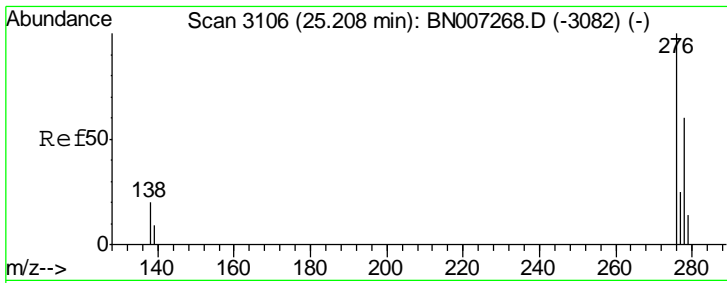
#32
 Bis(2-ethylhexyl)phthalate
 Concen: 0.512 ng
 RT: 20.98 min Scan# 2155
 Delta R.T. -0.00 min
 Lab File: BN007306.D
 Acq: 22 Aug 2019 00:47



Tgt Ion: 149 Resp: 19111

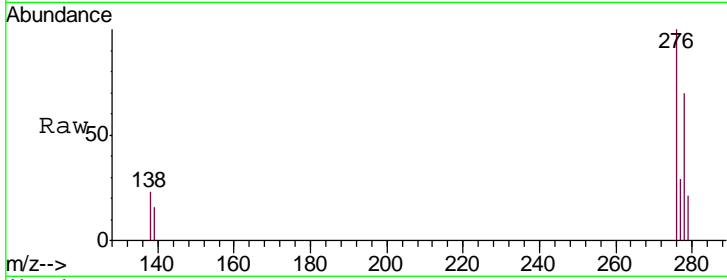
Ion	Ratio	Lower	Upper
149	100		
167	30.8	23.8	35.6
279	4.9	3.8	5.8





#33
 Indeno(1,2,3-cd)pyrene
 Concen: 0.287 ng
 RT: 25.22 min Scan# 3110
 Delta R.T. 0.01 min
 Lab File: BN007306.D
 Acq: 22 Aug 2019 00:47

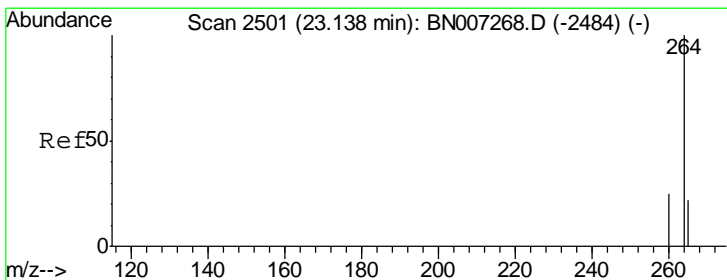
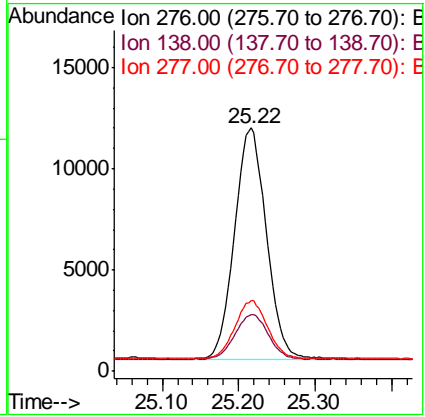
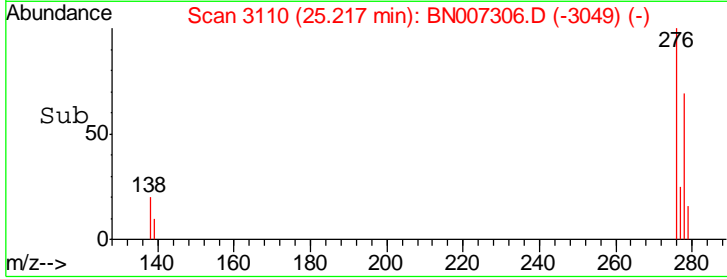
Instrument :
 BNA_N
ClientSampled :
 PB122438BS



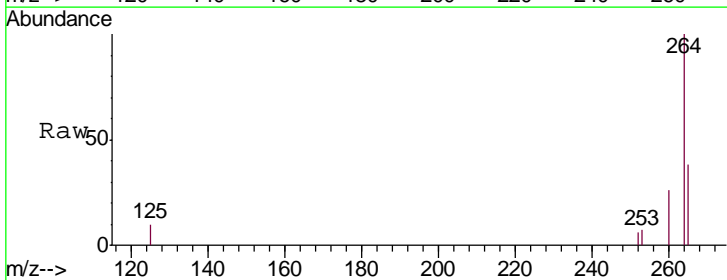
Tgt Ion: 276 Resp: 32938

Ion	Ratio	Lower	Upper
276	100		
138	20.2	17.1	25.7
277	25.0	20.1	30.1

Manual Integrations
APPROVED
 mohammad
 8/26/2019 5:48:05 PM

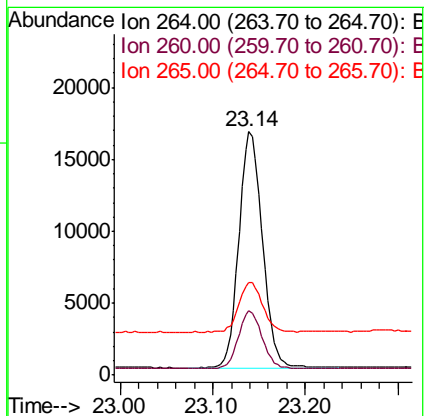
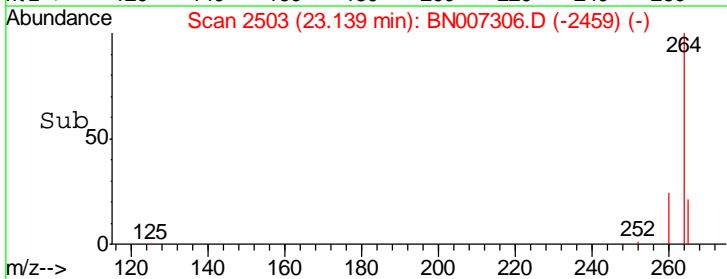


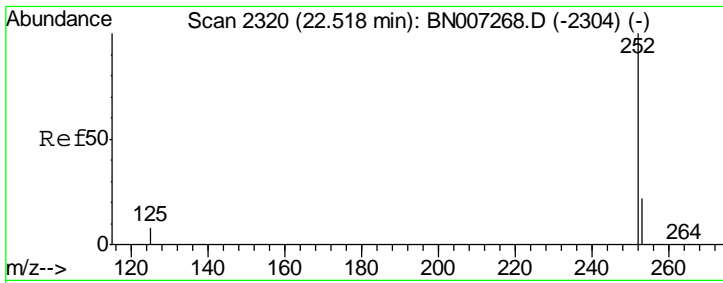
#34
 Perylene-d12
 Concen: 0.400 ng
 RT: 23.14 min Scan# 2503
 Delta R.T. 0.00 min
 Lab File: BN007306.D
 Acq: 22 Aug 2019 00:47



Tgt Ion: 264 Resp: 28988

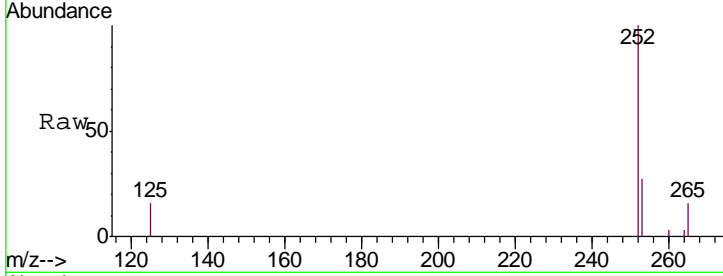
Ion	Ratio	Lower	Upper
264	100		
260	26.3	20.1	30.1
265	38.1	29.0	43.6





#35
 Benzo(b)fluoranthene
 Concen: 0.257 ng
 RT: 22.52 min Scan# 2322
 Delta R.T. 0.00 min
 Lab File: BN007306.D
 Acq: 22 Aug 2019 00:47

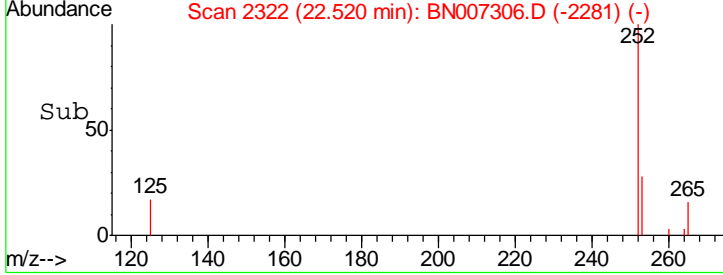
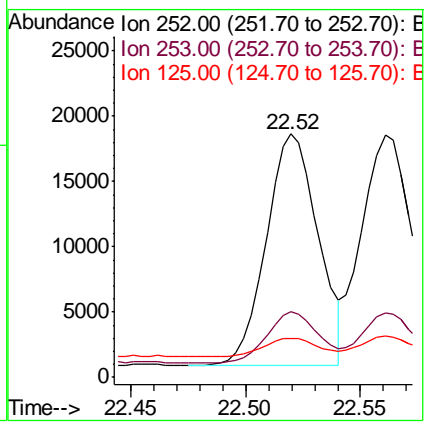
Instrument :
 BNA_N
ClientSampled :
 PB122438BS



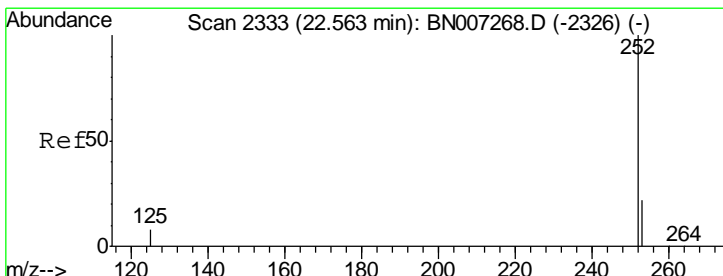
Tgt Ion: 252 Resp: 27786

Ion	Ratio	Lower	Upper
252	100		
253	27.1	18.5	27.7
125	16.2	7.8	11.6#

Manual Integrations
APPROVED
 mohammad
 8/26/2019 5:48:05 PM

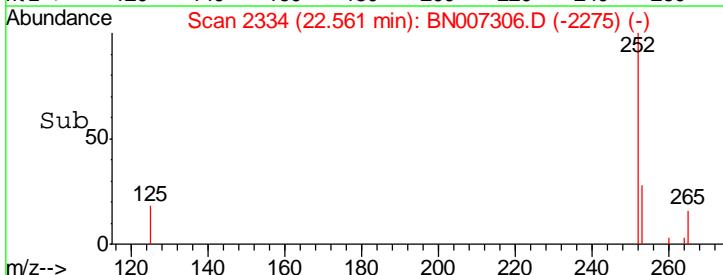
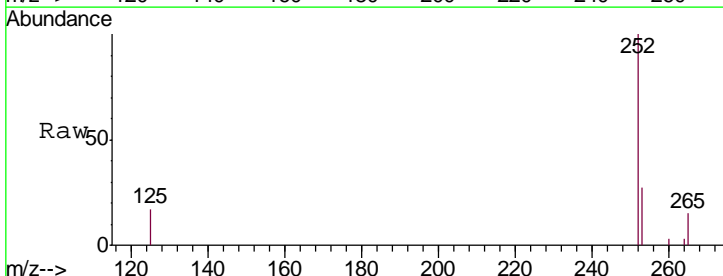
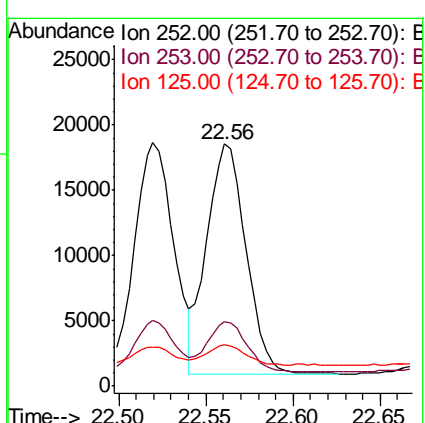


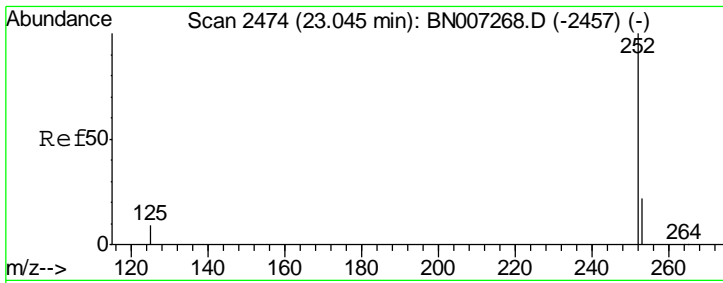
#36
 Benzo(k)fluoranthene
 Concen: 0.261 ng
 RT: 22.56 min Scan# 2334
 Delta R.T. -0.00 min
 Lab File: BN007306.D
 Acq: 22 Aug 2019 00:47



Tgt Ion: 252 Resp: 27623

Ion	Ratio	Lower	Upper
252	100		
253	26.7	18.4	27.6
125	16.8	8.0	12.0#



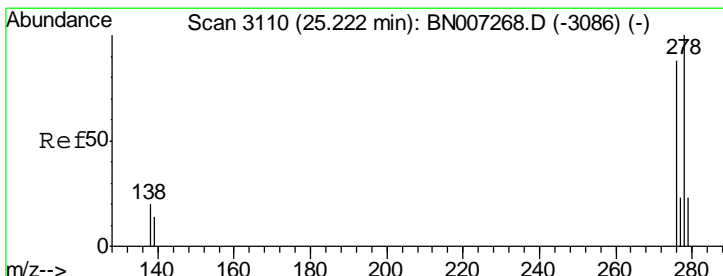
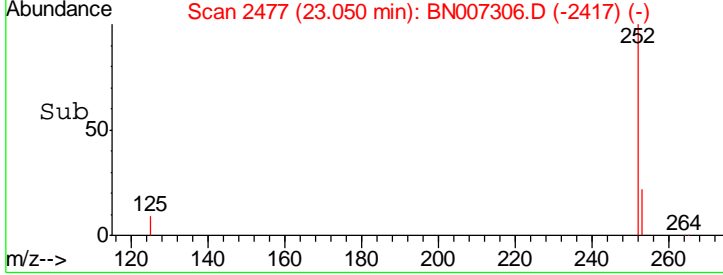
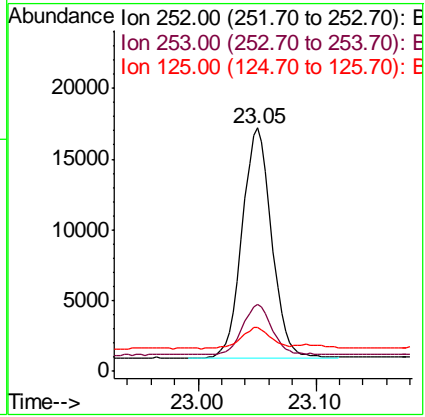
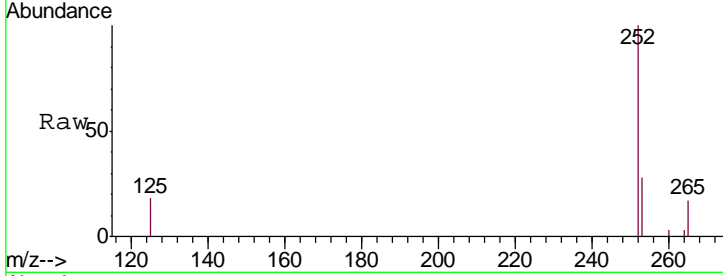


#37
 Benzo(a)pyrene
 Concen: 0.294 ng
 RT: 23.05 min Scan# 2477
 Delta R.T. 0.01 min
 Lab File: BN007306.D
 Acq: 22 Aug 2019 00:47

Instrument :
 BNA_N
 ClientSampled :
 PB122438BS

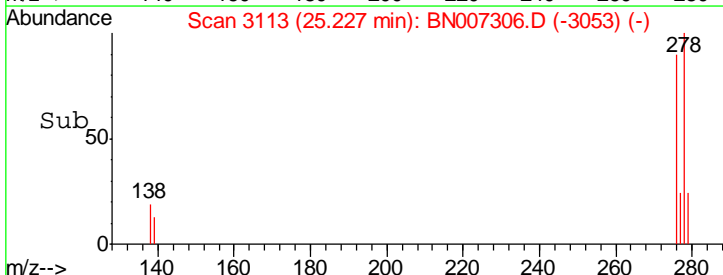
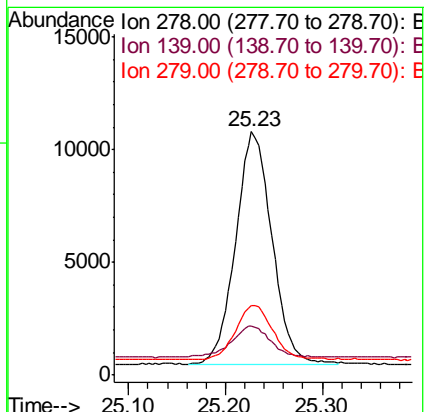
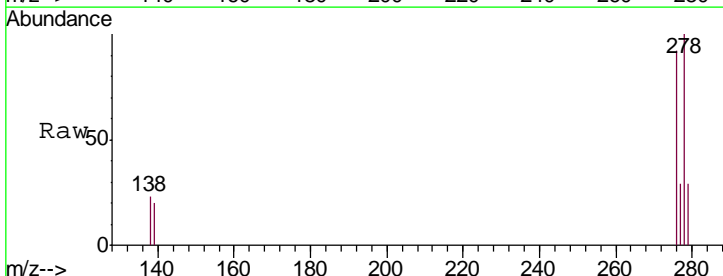
Tgt Ion	Resp	Lower	Upper
252	100		
253	27.6	18.7	28.1
125	18.0	8.7	13.1#

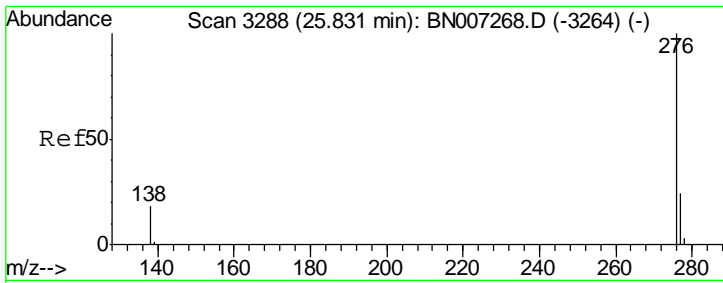
Manual Integrations
APPROVED
 mohammad
 8/26/2019 5:48:05 PM



#38
 Dibenzo(a,h)anthracene
 Concen: 0.262 ng
 RT: 25.23 min Scan# 3113
 Delta R.T. 0.01 min
 Lab File: BN007306.D
 Acq: 22 Aug 2019 00:47

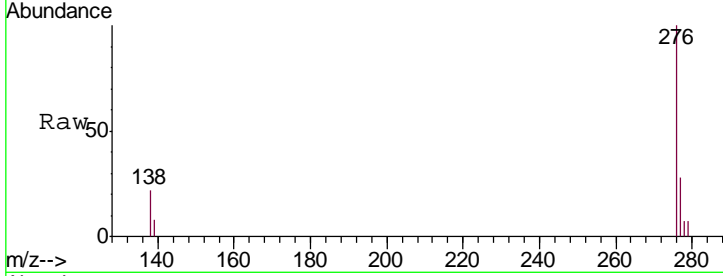
Tgt Ion	Resp	Lower	Upper
278	100		
139	20.0	11.8	17.8#
279	28.8	19.8	29.6





#39
 Benzo(a,h,i)perylene
 Concen: 0.273 ng
 RT: 25.84 min Scan# 3292
 Delta R.T. 0.01 min
 Lab File: BN007306.D
 Acq: 22 Aug 2019 00:47

Instrument :
 BNA_N
ClientSampled :
 PB122438BS



Tot Ion: 276 Resp: 28275

Ion	Ratio	Lower	Upper
276	100		
277	27.8	19.5	29.3
138	21.8	15.3	22.9

Manual Integrations
APPROVED
 mohammad
 8/26/2019 5:48:05 PM

