

Data Path : Z:\SVOASRV\HPCHEM1\BNA N\DATA\BN011620\  
 Data File : BN009388.D  
 Acq On : 16 Jan 2020 17:32  
 Operator : JU  
 Sample : SSTDCCC0.4  
 Misc :  
 ALS Vial : 2 Sample Multiplier: 1

Instrument :  
 BNA\_N  
 ClientSampleId :  
 SSTDCCC0.4EC

Quant Time: Jan 16 18:08:19 2020  
 Quant Method : Z:\SVOASRV\HPCHEM1\BNA N\METHODS\8270-SIM-BN011420.M  
 Quant Title : ASP BNA STANDARDS FOR 5 POINT CALIBRATION  
 QLast Update : Tue Jan 14 09:33:55 2020  
 Response via : Initial Calibration

Internal Standards	R.T.	QIon	Response	Conc	Units	Dev(Min)
1) 1,4-Dichlorobenzene-d4	7.47	152	1638	0.40	ng	0.00
7) Naphthalene-d8	10.22	136	5801	0.40	ng	-0.01
13) Acenaphthene-d10	14.10	164	3563	0.40	ng	-0.01
19) Phenanthrene-d10	16.85	188	7712	0.40	ng	-0.01
27) Chrysene-d12	21.06	240	6670	0.40	ng	-0.01
34) Perylene-d12	23.19	264	6773	0.40	ng	0.00

## System Monitoring Compounds

4) 2-Fluorophenol	5.12	112	1555	0.41	ng	0.00
5) Phenol-d6	6.67	99	1856	0.43	ng	0.00
8) Nitrobenzene-d5	8.62	82	1796	0.39	ng	-0.01
11) 2-Methylnaphthalene-d10	11.82	152	4398	0.39	ng	0.00
14) 2,4,6-Tribromophenol	15.61	330	487	0.36	ng	-0.01
15) 2-Fluorobiphenyl	12.73	172	5386	0.40	ng	0.00
25) Fluoranthene-d10	18.90	212	10100	0.38	ng	0.00
29) Terphenyl-d14	19.51	244	6446	0.41	ng	0.00

## Target Compounds

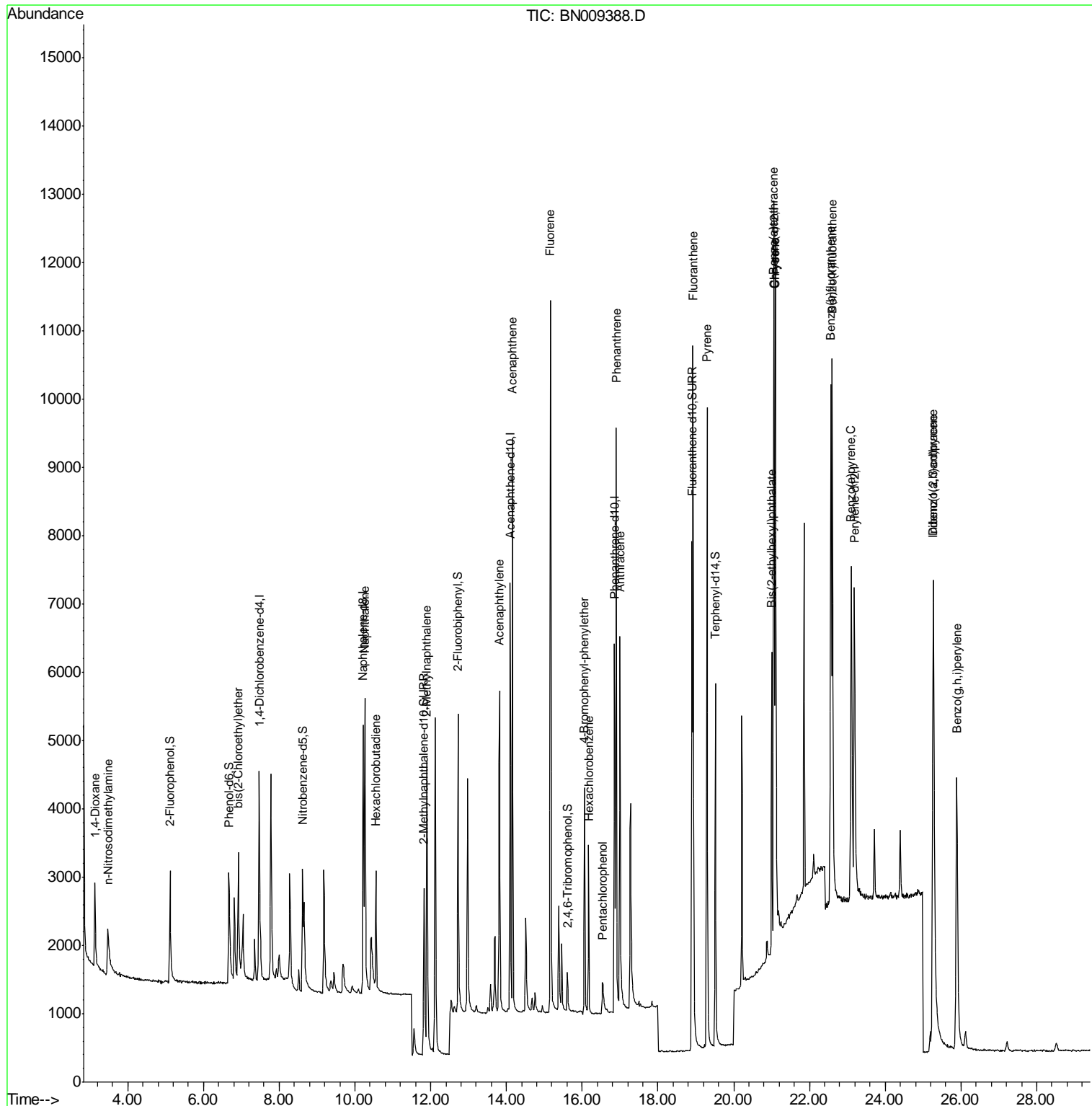
Target Compounds	R.T.	QIon	Response	Conc	Units	Qvalue
2) 1,4-Dioxane	3.14	88	679	0.397	ng	97
3) n-Nitrosodimethylamine	3.47	42	992	0.376	ng	95
6) bis(2-Chloroethyl)ether	6.92	93	1681	0.374	ng	98
9) Naphthalene	10.27	128	6301	0.401	ng	99
10) Hexachlorobutadiene	10.56	225	1383	0.402	ng	# 97
12) 2-Methylnaphthalene	11.90	142	4304	0.393	ng	99
16) Acenaphthylene	13.82	152	5743	0.374	ng	100
17) Acenaphthene	14.16	154	4315	0.399	ng	98
18) Fluorene	15.16	166	5555	0.394	ng	99
20) 4-Bromophenyl-phenylether	16.06	248	1823	0.393	ng	# 89
21) Hexachlorobenzene	16.17	284	1871	0.378	ng	100
22) Pentachlorophenol	16.55	266	422	0.388	ng	96
23) Phenanthrene	16.90	178	9103	0.393	ng	100
24) Anthracene	16.99	178	7343	0.377	ng	99
26) Fluoranthene	18.93	202	10332	0.380	ng	99
28) Pyrene	19.29	202	10461	0.414	ng	100
30) Benzo(a)anthracene	21.05	228	8512	0.388	ng	99
31) Chrysene	21.10	228	10125	0.404	ng	99
32) Bis(2-ethylhexyl)phthalate	21.01	149	3664	0.378	ng	99
33) Indeno(1,2,3-cd)pyrene	25.26	276	10904	0.418	ng	100
35) Benzo(b)fluoranthene	22.56	252	9355	0.376	ng	98
36) Benzo(k)fluoranthene	22.60	252	11561	0.420	ng	100
37) Benzo(a)pyrene	23.10	252	8866	0.404	ng	# 95
38) Dibenzo(a,h)anthracene	25.28	278	8572	0.389	ng	98
39) Benzo(g,h,i)perylene	25.90	276	9498	0.391	ng	100

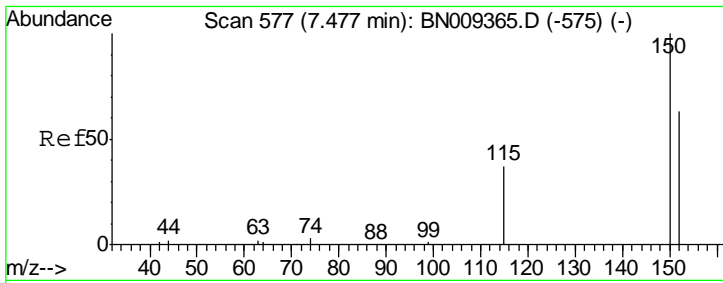
(#) = qualifier out of range (m) = manual integration (+) = signals summed

Data Path : Z:\SVOASRV\HPCHEM1\BNA N\DATA\BN011620\  
 Data File : BN009388.D  
 Acq On : 16 Jan 2020 17:32  
 Operator : JU  
 Sample : SSTDCCC0.4  
 Misc :  
 ALS Vial : 2 Sample Multiplier: 1

Instrument :  
 BNA\_N  
 Client Sampled :  
 SSTDCCC0.4EC

Quant Time: Jan 16 18:08:19 2020  
 Quant Method : Z:\SVOASRV\HPCHEM1\BNA N\METHODS\8270-SIM-BN011420.M  
 Quant Title : ASP BNA STANDARDS FOR 5 POINT CALIBRATION  
 QLast Update : Tue Jan 14 09:33:55 2020  
 Response via : Initial Calibration

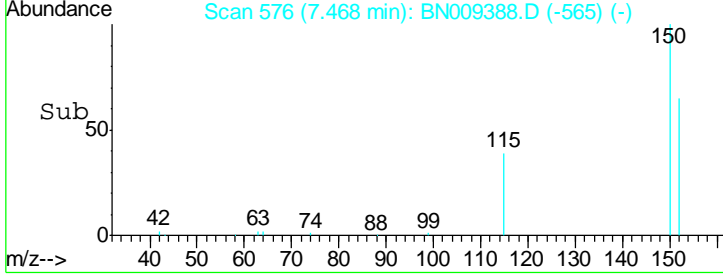
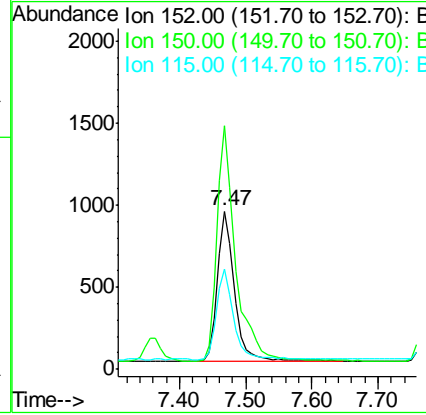
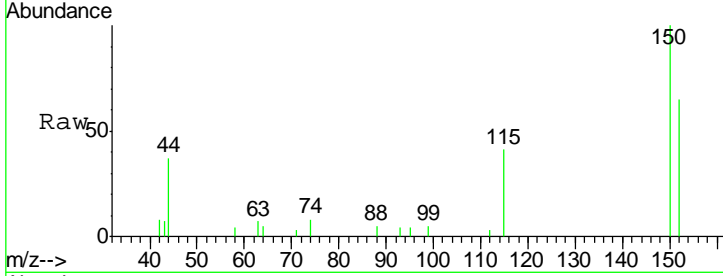




#1  
 1,4-Dichlorobenzene-d4  
 Concen: 0.400 ng  
 RT: 7.47 min Scan# 576  
 Delta R.T. -0.01 min  
 Lab File: BN009388.D  
 Acq: 16 Jan 2020 17:32

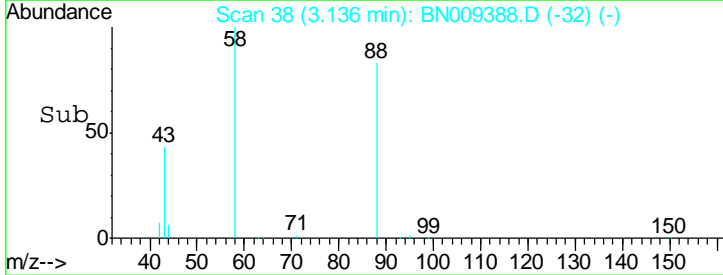
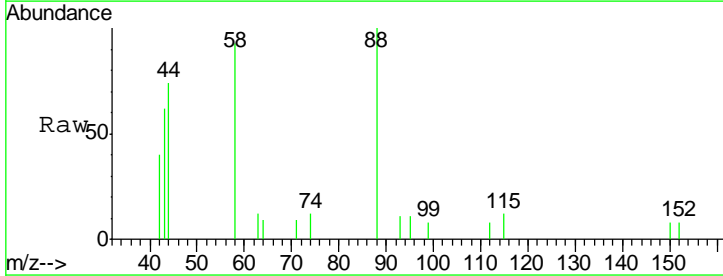
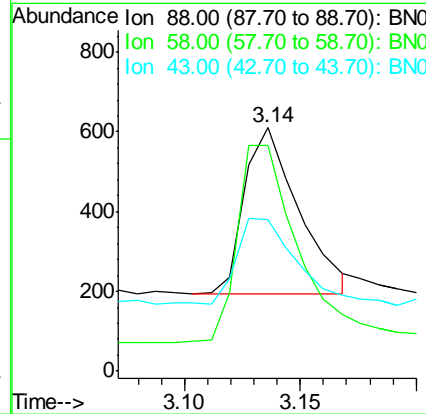
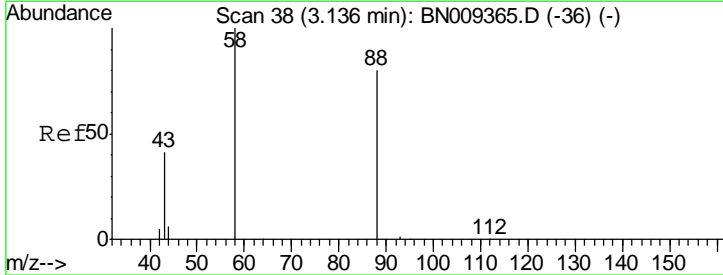
**Instrument :**  
 BNA\_N  
**ClientSampleId :**  
 SSTDCCC0.4EC

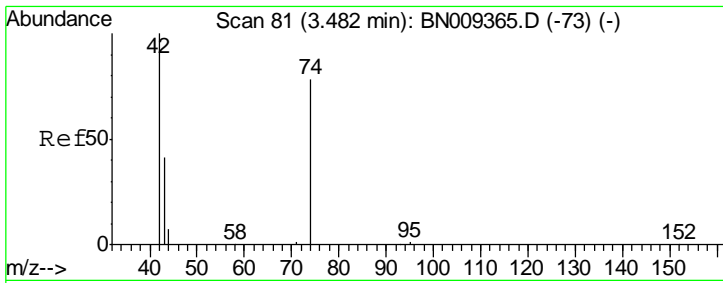
Tgt Ion	Resp	Lower	Upper
152	1638		
152	100		
150	154.1	125.7	188.5
115	63.7	53.3	79.9



#2  
 1,4-Dioxane  
 Concen: 0.397 ng  
 RT: 3.14 min Scan# 38  
 Delta R.T. -0.00 min  
 Lab File: BN009388.D  
 Acq: 16 Jan 2020 17:32

Tgt Ion	Resp	Lower	Upper
88	679		
88	100		
58	129.6	100.2	150.2
43	54.1	43.1	64.7

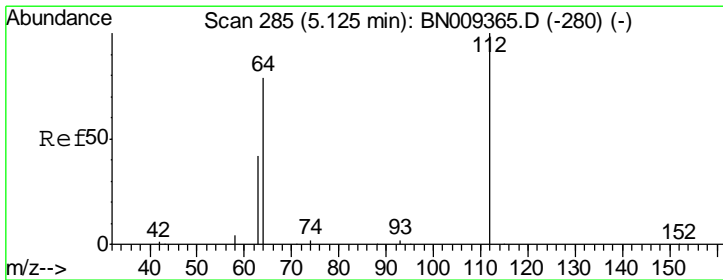
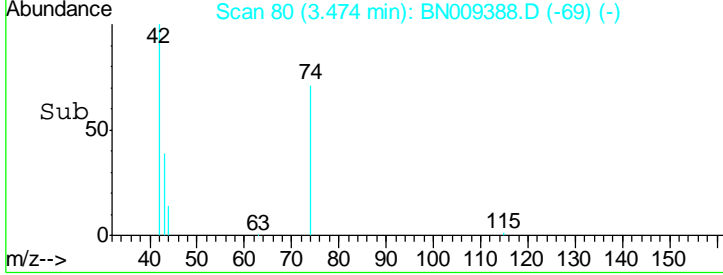
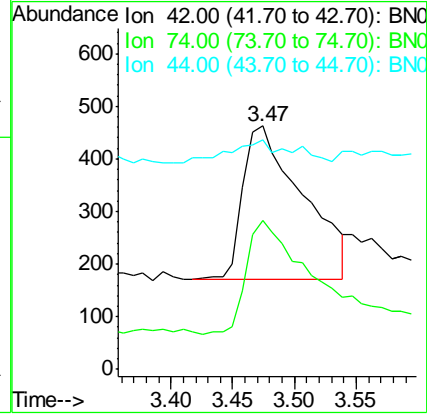
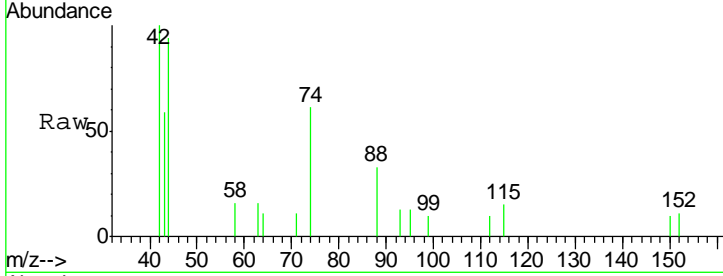




#3  
 n-Nitrosodimethylamine  
 Concen: 0.376 ng  
 RT: 3.47 min Scan# 80  
 Delta R.T. -0.01 min  
 Lab File: BN009388.D  
 Acq: 16 Jan 2020 17:32

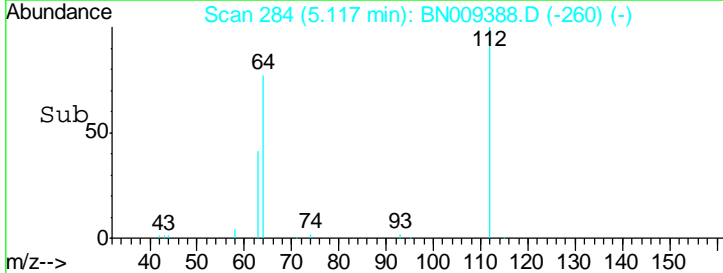
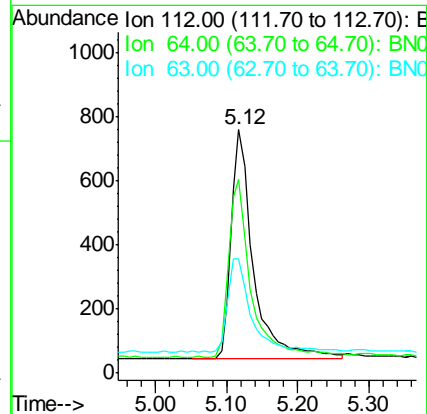
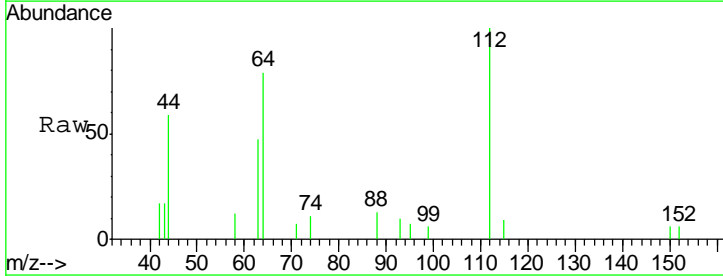
Instrument :  
 BNA\_N  
 ClientSampleId :  
 SSTDCCC0.4EC

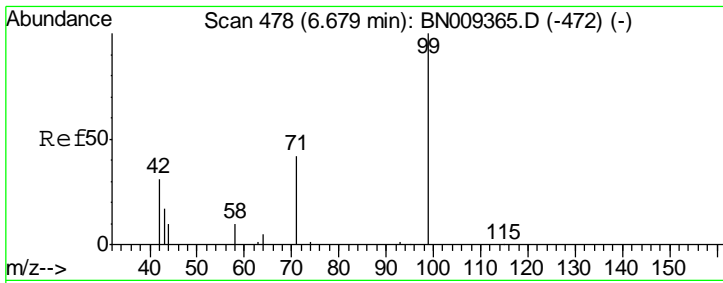
Tgt Ion	Resp	Lower	Upper
42	100		
74	74.0	55.8	83.8
44	15.1	11.1	16.7



#4  
 2-Fluorophenol  
 Concen: 0.412 ng  
 RT: 5.12 min Scan# 284  
 Delta R.T. -0.01 min  
 Lab File: BN009388.D  
 Acq: 16 Jan 2020 17:32

Tgt Ion	Resp	Lower	Upper
112	100		
64	78.3	61.5	92.3
63	43.2	35.0	52.4

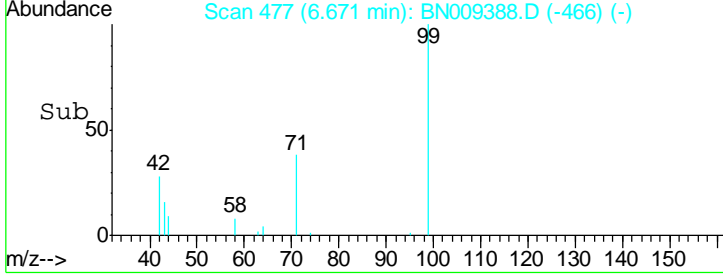
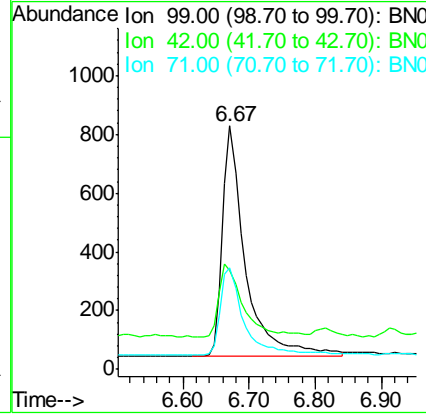
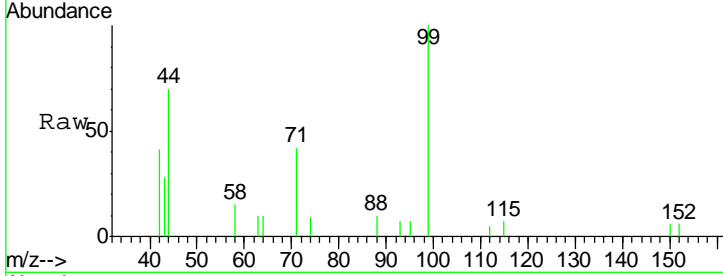




#5  
 Phenol-d6  
 Concen: 0.425 ng  
 RT: 6.67 min Scan# 477  
 Delta R.T. -0.01 min  
 Lab File: BN009388.D  
 Acq: 16 Jan 2020 17:32

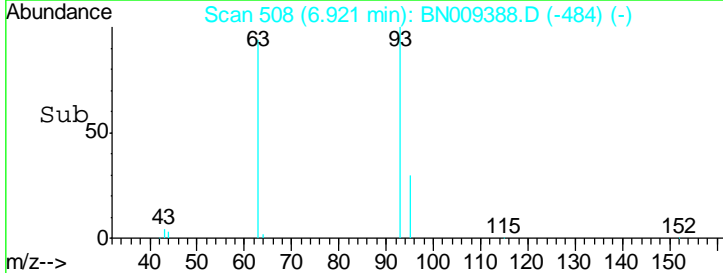
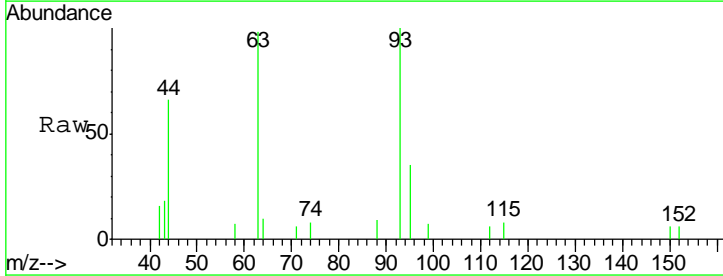
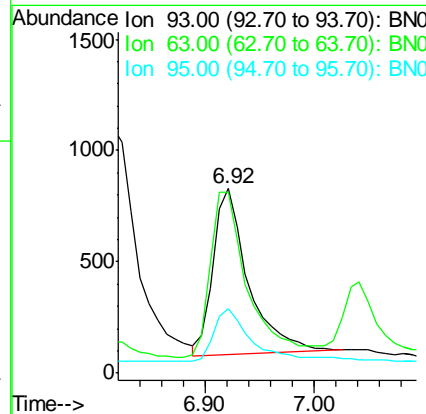
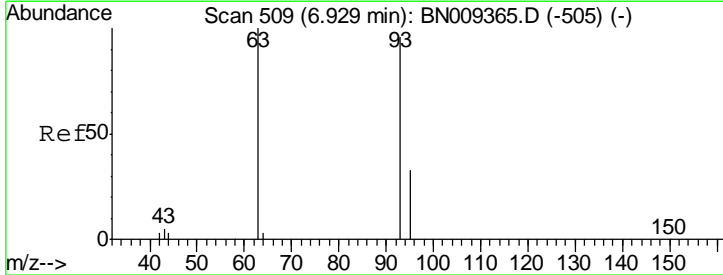
**Instrument :**  
 BNA\_N  
**ClientSampled :**  
 SSTDCCC0.4EC

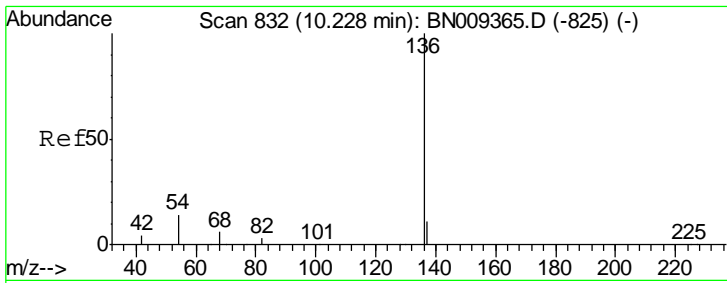
Tgt Ion	Resp	Lower	Upper
99	1856		
Ion Ratio			
99	100		
42	34.9	27.6	41.4
71	39.9	33.0	49.6



#6  
 bis(2-Chloroethyl)ether  
 Concen: 0.374 ng  
 RT: 6.92 min Scan# 508  
 Delta R.T. -0.01 min  
 Lab File: BN009388.D  
 Acq: 16 Jan 2020 17:32

Tgt Ion	Resp	Lower	Upper
93	1681		
Ion Ratio			
93	100		
63	104.3	85.1	127.7
95	36.9	30.2	45.4

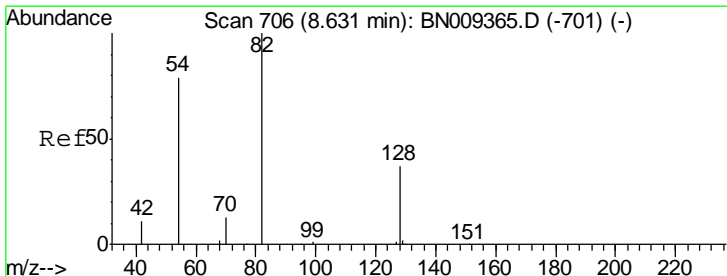
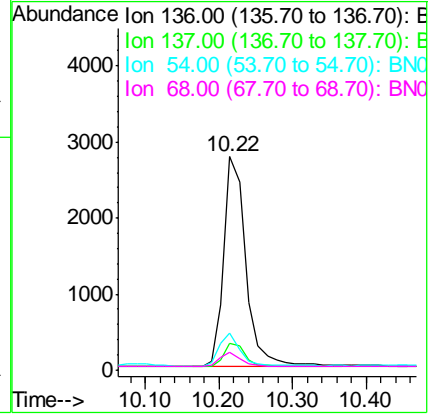
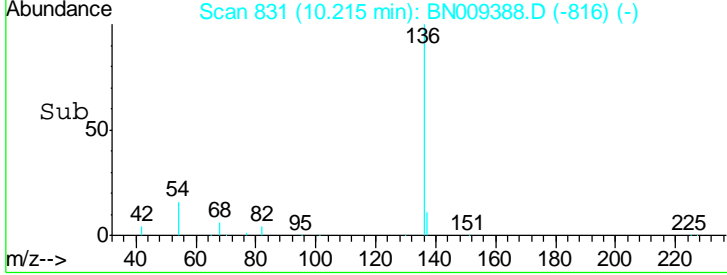
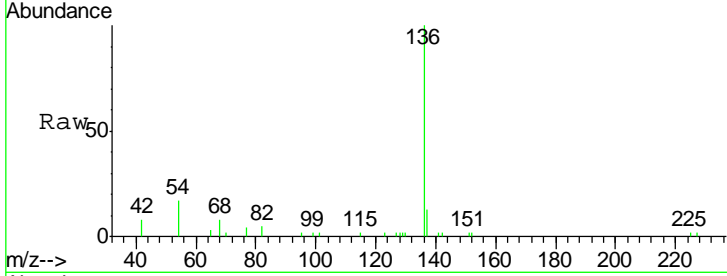




#7  
 Naphthalene-d8  
 Concen: 0.400 ng  
 RT: 10.22 min Scan# 831  
 Delta R.T. -0.01 min  
 Lab File: BN009388.D  
 Acq: 16 Jan 2020 17:32

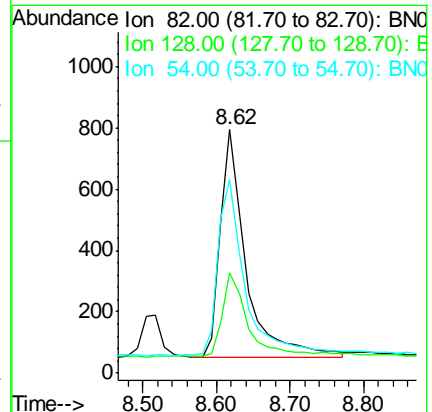
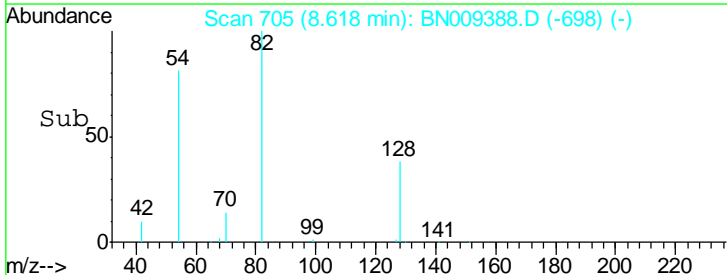
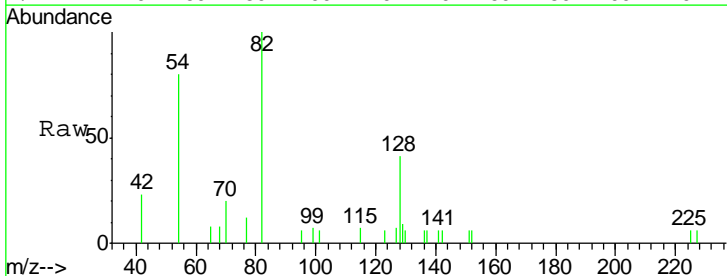
**Instrument :**  
 BNA\_N  
**ClientSampled :**  
 SSTDCCC0.4EC

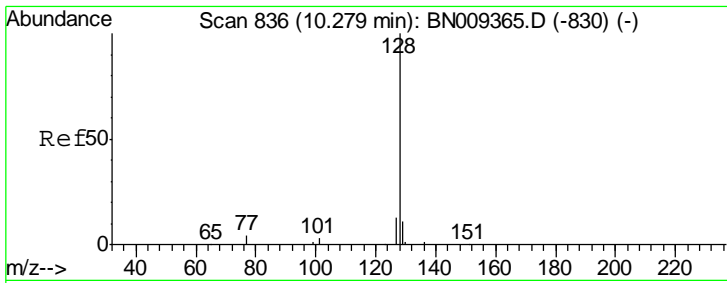
Tgt Ion	Resp	Lower	Upper
136	5801		
137	12.6	10.3	15.5
54	17.3	12.6	19.0
68	8.1	6.5	9.7



#8  
 Nitrobenzene-d5  
 Concen: 0.388 ng  
 RT: 8.62 min Scan# 705  
 Delta R.T. -0.01 min  
 Lab File: BN009388.D  
 Acq: 16 Jan 2020 17:32

Tgt Ion	Resp	Lower	Upper
82	1796		
128	41.2	34.8	52.2
54	79.6	65.8	98.6

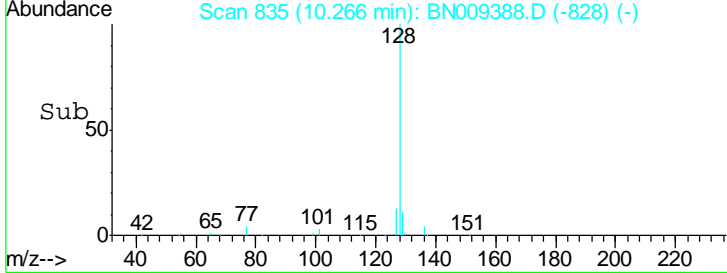
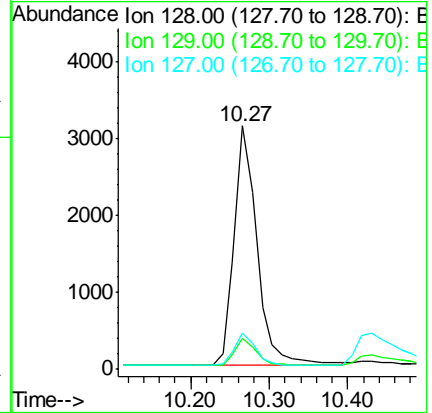
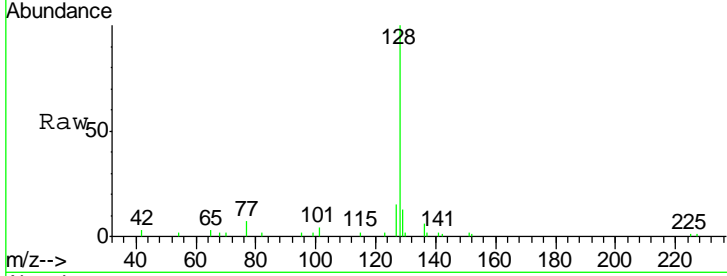




#9  
 Naphthalene  
 Concen: 0.401 ng  
 RT: 10.27 min Scan# 835  
 Delta R.T. -0.01 min  
 Lab File: BN009388.D  
 Acq: 16 Jan 2020 17:32

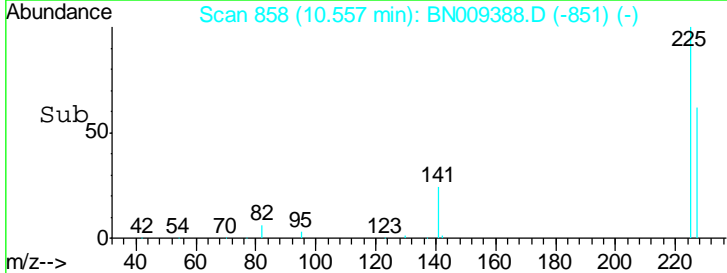
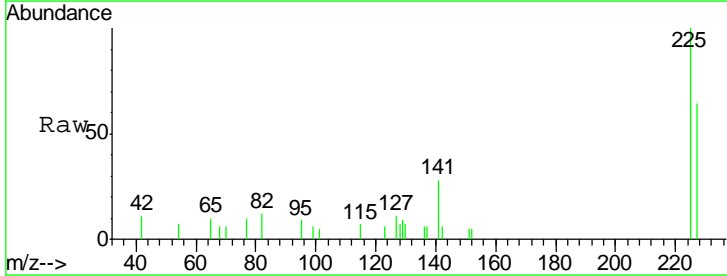
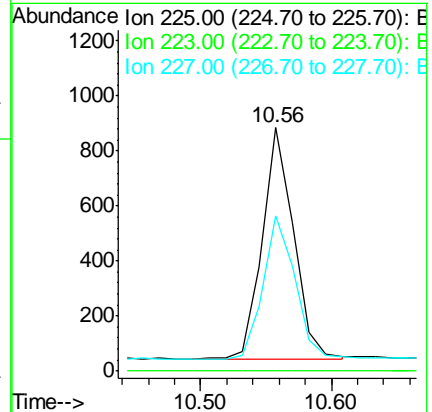
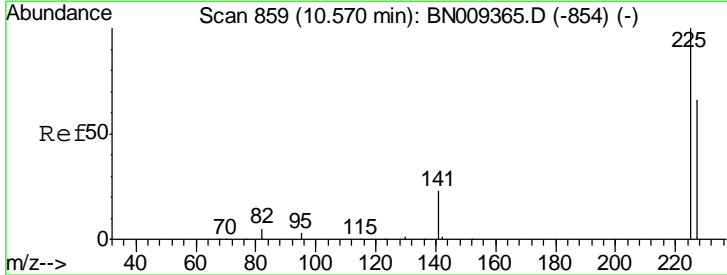
**Instrument :**  
 BNA\_N  
**ClientSampleId :**  
 SSTDCCC0.4EC

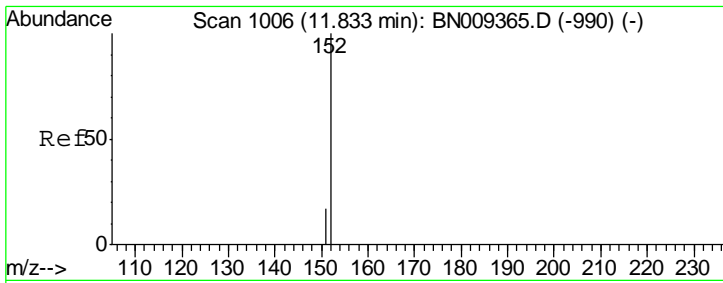
Tgt Ion	Resp	Lower	Upper
128	6301		
129	12.7	10.4	15.6
127	14.7	11.4	17.2



#10  
 Hexachlorobutadiene  
 Concen: 0.402 ng  
 RT: 10.56 min Scan# 858  
 Delta R.T. -0.01 min  
 Lab File: BN009388.D  
 Acq: 16 Jan 2020 17:32

Tgt Ion	Resp	Lower	Upper
225	1383		
223	0.0	0.0	0.0
227	63.1	52.6	78.8

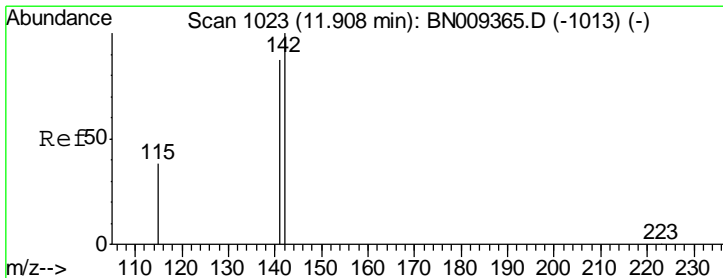
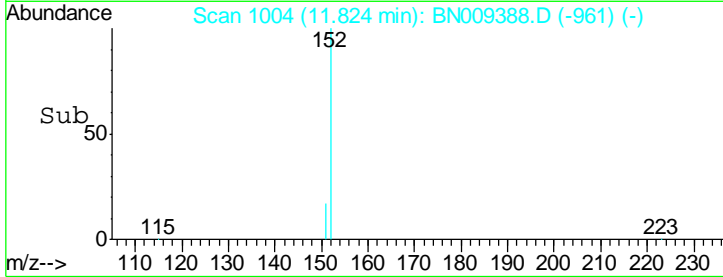
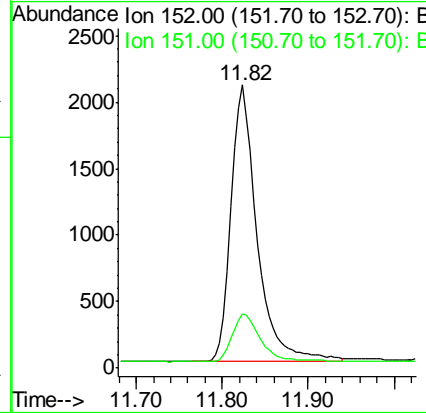
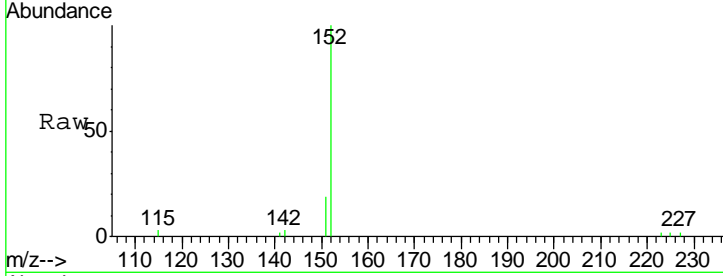




#11  
 2-Methylnaphthalene-d10  
 Concen: 0.392 ng  
 RT: 11.82 min Scan# 1004  
 Delta R.T. -0.01 min  
 Lab File: BN009388.D  
 Acq: 16 Jan 2020 17:32

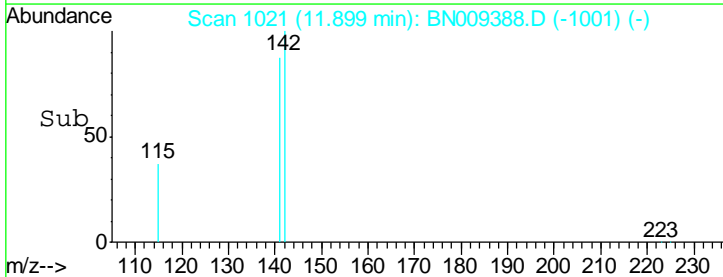
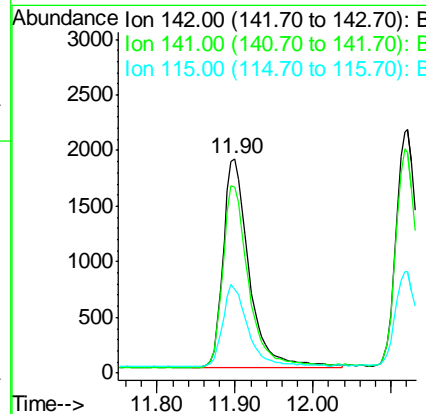
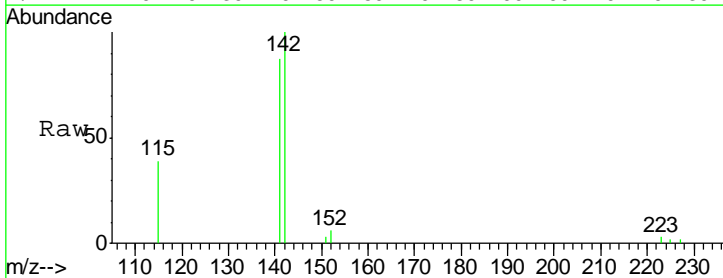
Instrument :  
 BNA\_N  
 ClientSampleId :  
 SSTDCCC0.4EC

Tgt Ion:152 Resp: 4398  
 Ion Ratio Lower Upper  
 152 100  
 151 18.7 14.8 22.2

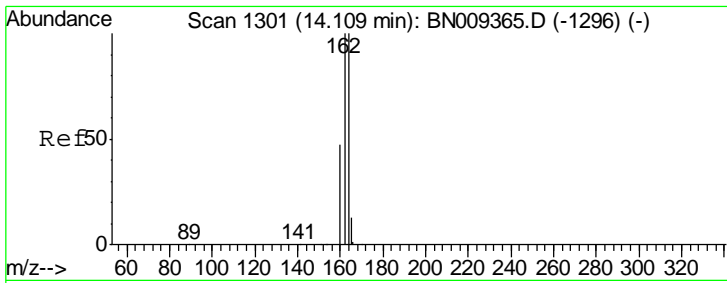


#12  
 2-Methylnaphthalene  
 Concen: 0.393 ng  
 RT: 11.90 min Scan# 1021  
 Delta R.T. -0.01 min  
 Lab File: BN009388.D  
 Acq: 16 Jan 2020 17:32

Tgt Ion:142 Resp: 4304  
 Ion Ratio Lower Upper  
 142 100  
 141 87.1 69.8 104.6  
 115 39.0 32.5 48.7



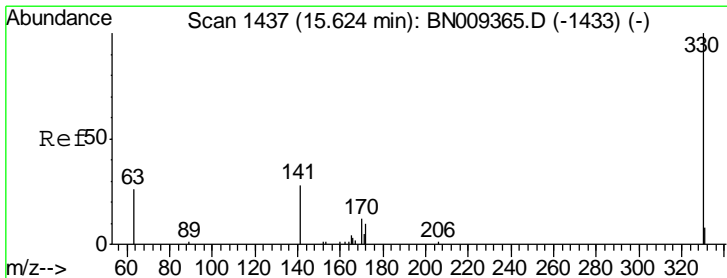
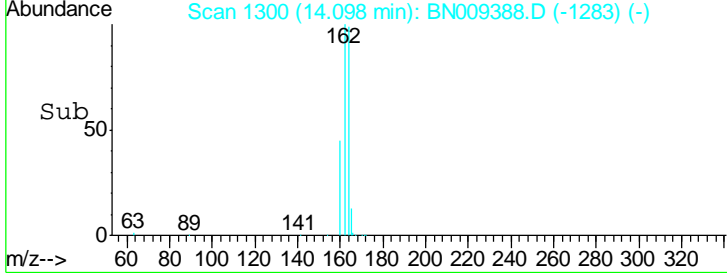
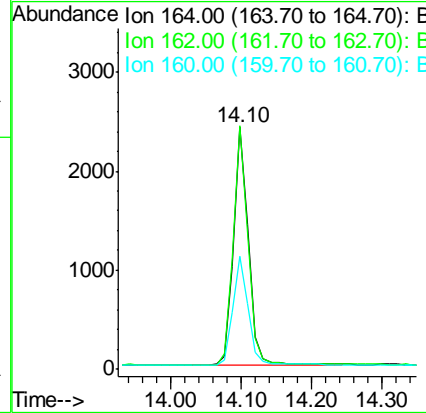
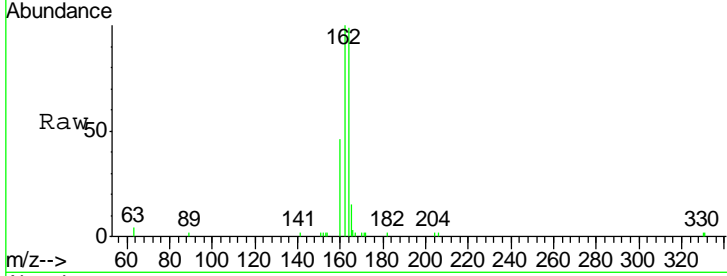




#13  
 Acenaphthene-d10  
 Concen: 0.400 ng  
 RT: 14.10 min Scan# 1300  
 Delta R.T. -0.01 min  
 Lab File: BN009388.D  
 Acq: 16 Jan 2020 17:32

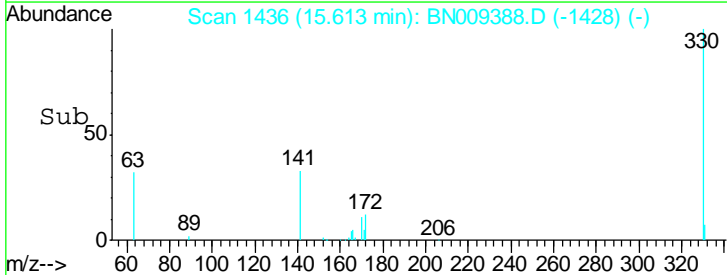
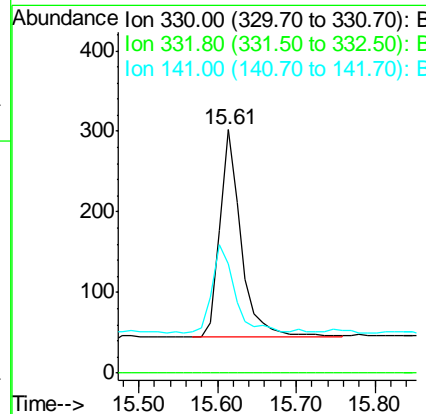
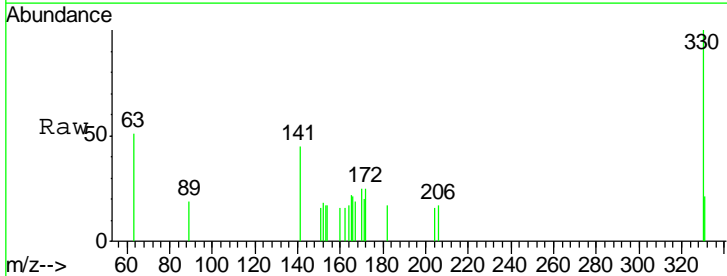
Instrument :  
 BNA\_N  
 ClientSampleId :  
 SSTDCCC0.4EC

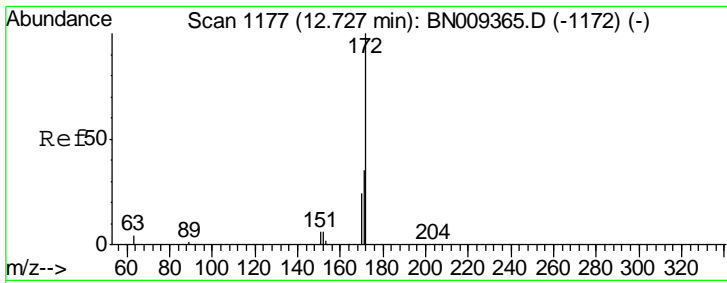
Tgt Ion	Resp	Lower	Upper
164	100		
162	100.7	79.8	119.6
160	46.7	38.4	57.6



#14  
 2,4,6-Tribromophenol  
 Concen: 0.361 ng  
 RT: 15.61 min Scan# 1436  
 Delta R.T. -0.01 min  
 Lab File: BN009388.D  
 Acq: 16 Jan 2020 17:32

Tgt Ion	Resp	Lower	Upper
330	100		
332	0.0	0.0	0.0
141	44.8	33.1	49.7

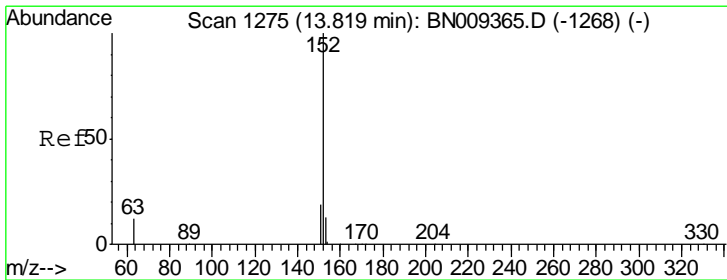
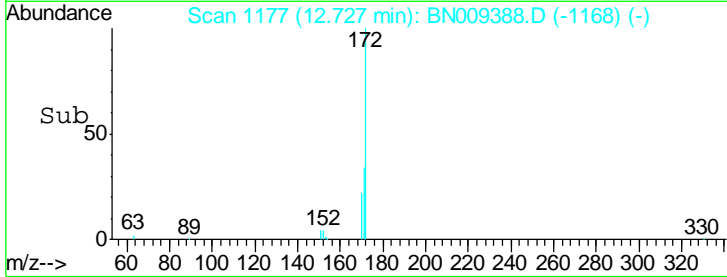
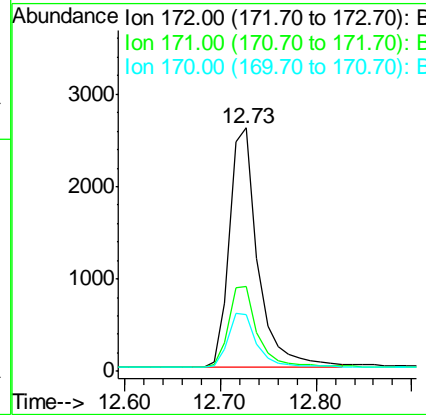
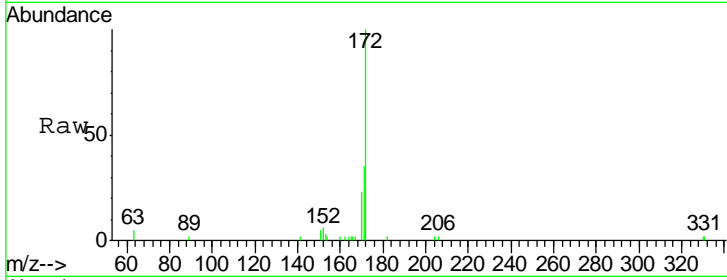




#15  
 2-Fluorobiphenyl  
 Concen: 0.404 ng  
 RT: 12.73 min Scan# 1177  
 Delta R.T. -0.00 min  
 Lab File: BN009388.D  
 Acq: 16 Jan 2020 17:32

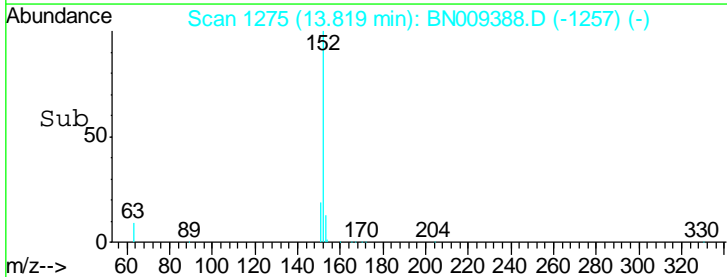
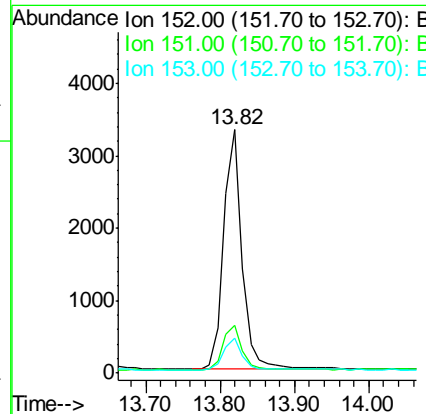
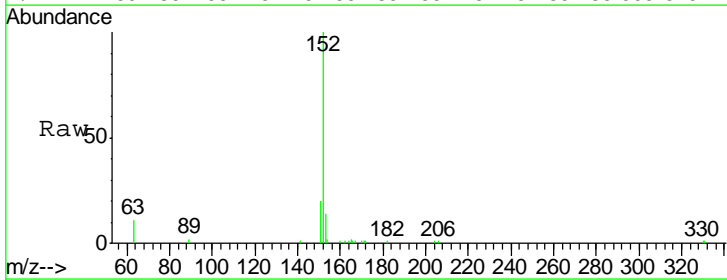
Instrument :  
 BNA\_N  
 ClientSampleId :  
 SSTDCCC0.4EC

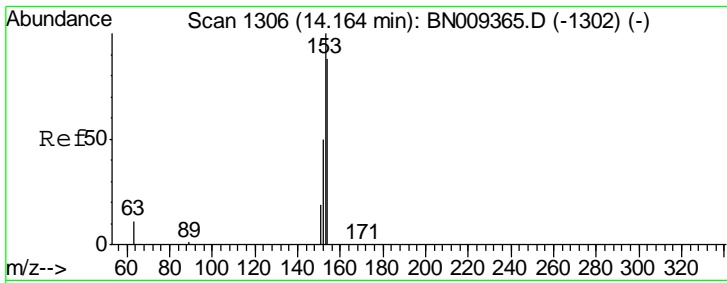
Tgt Ion	Resp	Lower	Upper
172	100		
171	34.9	29.5	44.3
170	23.2	20.7	31.1



#16  
 Acenaphthylene  
 Concen: 0.374 ng  
 RT: 13.82 min Scan# 1275  
 Delta R.T. -0.00 min  
 Lab File: BN009388.D  
 Acq: 16 Jan 2020 17:32

Tgt Ion	Resp	Lower	Upper
152	100		
151	19.1	15.4	23.2
153	12.8	10.4	15.6

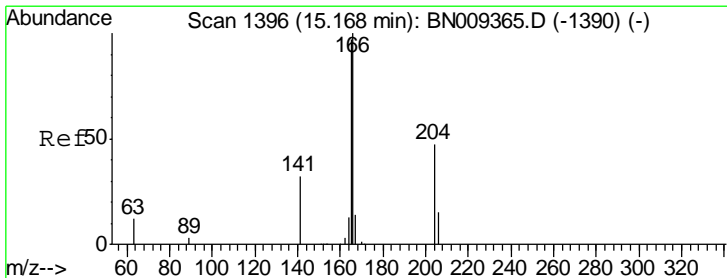
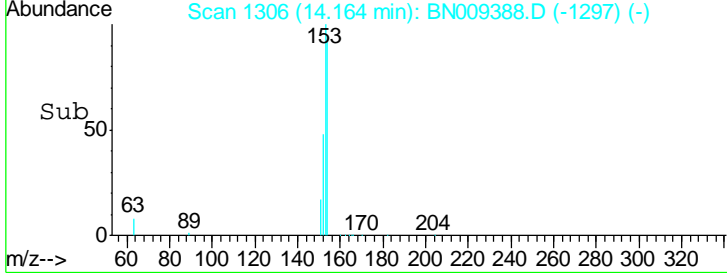
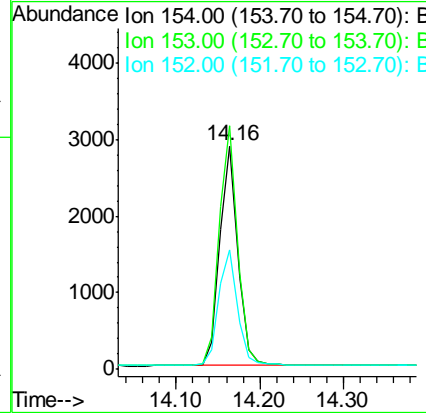
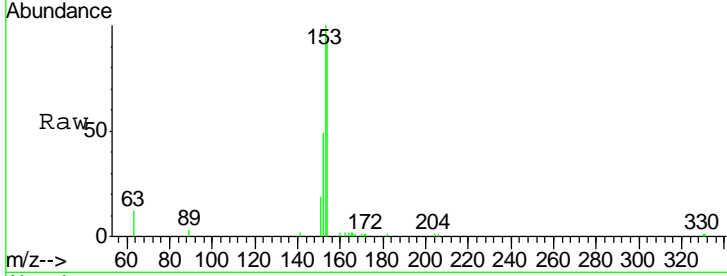




#17  
 Acenaphthene  
 Concen: 0.399 ng  
 RT: 14.16 min Scan# 1306  
 Delta R.T. -0.00 min  
 Lab File: BN009388.D  
 Acq: 16 Jan 2020 17:32

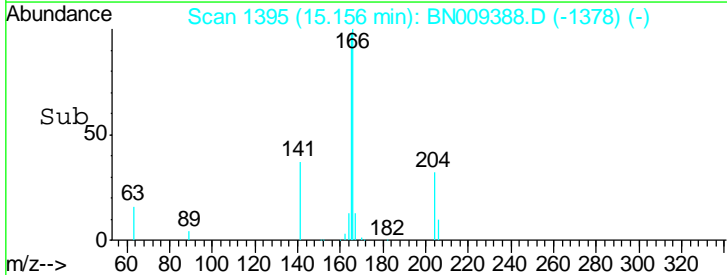
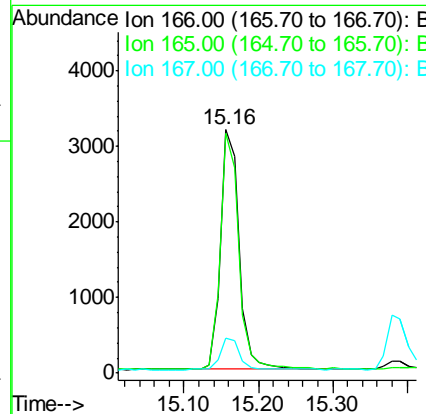
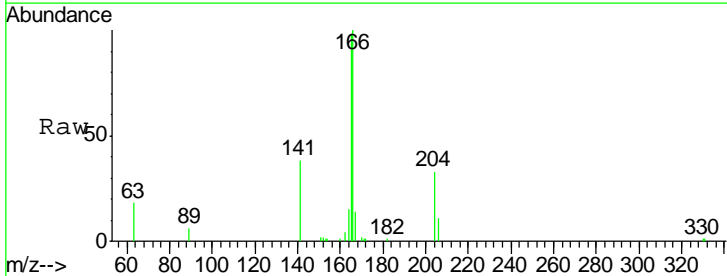
Instrument :  
 BNA\_N  
 ClientSampleId :  
 SSTDCCC0.4EC

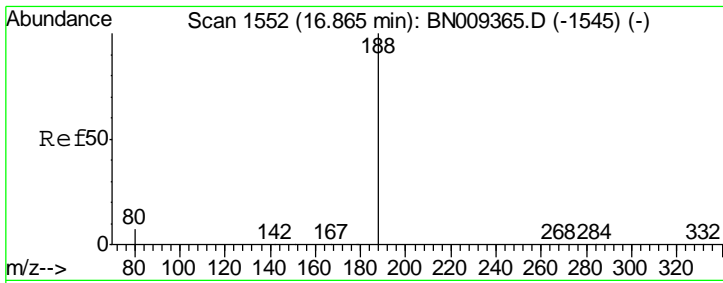
Tgt Ion	Resp	Lower	Upper
154	100		
153	111.6	90.5	135.7
152	55.1	45.3	67.9



#18  
 Fluorene  
 Concen: 0.394 ng  
 RT: 15.16 min Scan# 1395  
 Delta R.T. -0.01 min  
 Lab File: BN009388.D  
 Acq: 16 Jan 2020 17:32

Tgt Ion	Resp	Lower	Upper
166	100		
165	97.0	78.2	117.2
167	13.3	11.0	16.6

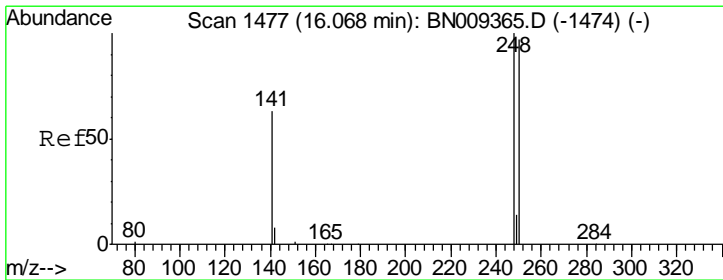
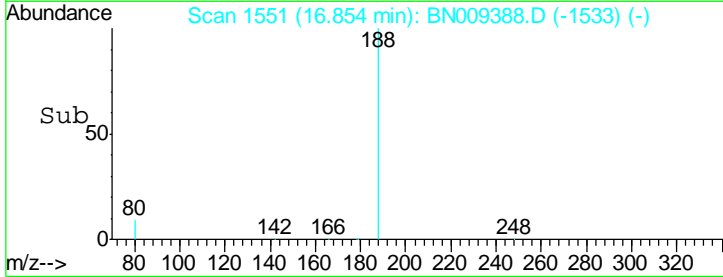
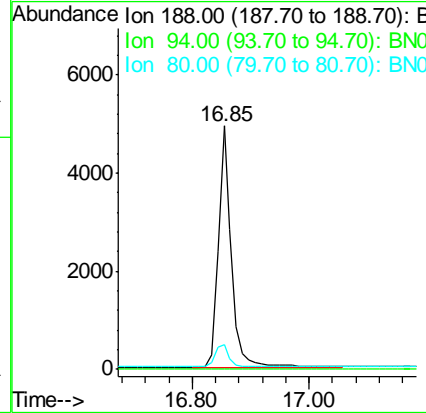
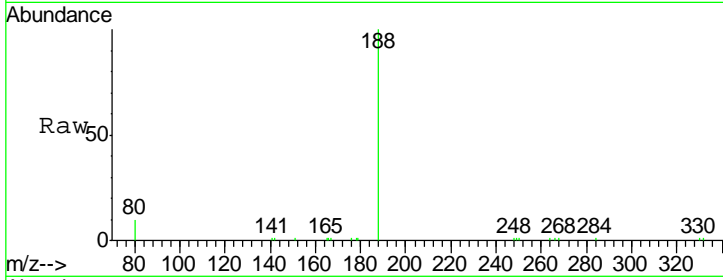




#19  
 Phenanthrene-d10  
 Concen: 0.400 ng  
 RT: 16.85 min Scan# 1551  
 Delta R.T. -0.01 min  
 Lab File: BN009388.D  
 Acq: 16 Jan 2020 17:32

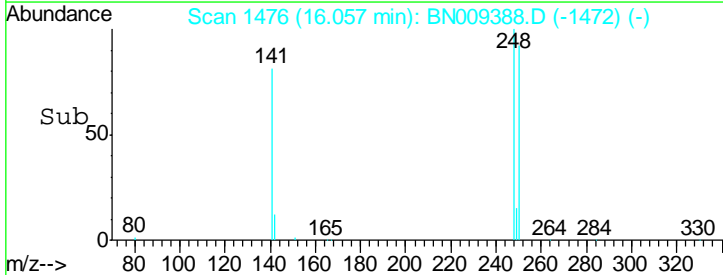
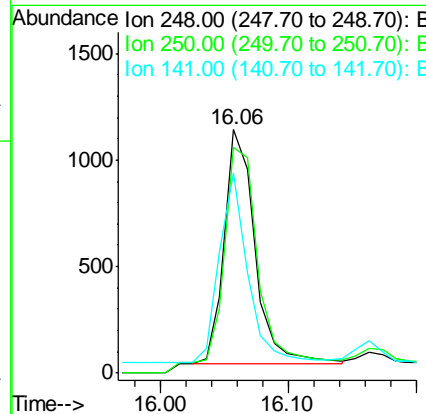
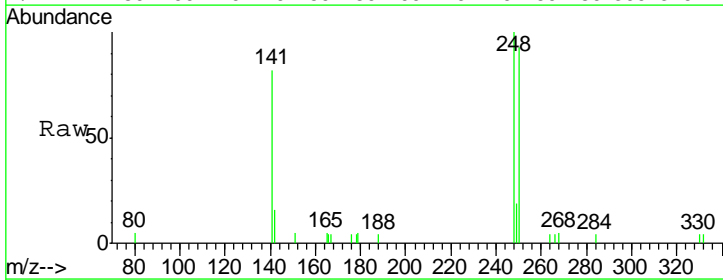
Instrument :  
 BNA\_N  
 ClientSampleId :  
 SSTDCCC0.4EC

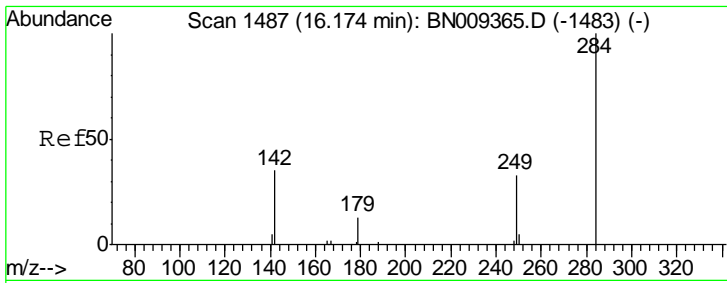
Tgt Ion	Resp	Lower	Upper
188	100		
94	0.0	0.0	0.0
80	10.1	6.6	10.0#



#20  
 4-Bromophenyl-phenylether  
 Concen: 0.393 ng  
 RT: 16.06 min Scan# 1476  
 Delta R.T. -0.01 min  
 Lab File: BN009388.D  
 Acq: 16 Jan 2020 17:32

Tgt Ion	Resp	Lower	Upper
248	100		
250	92.9	77.8	116.8
141	82.2	53.4	80.0#

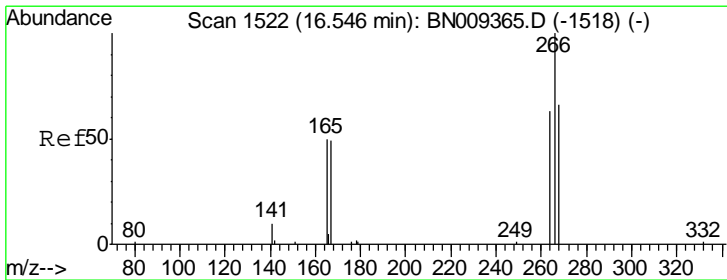
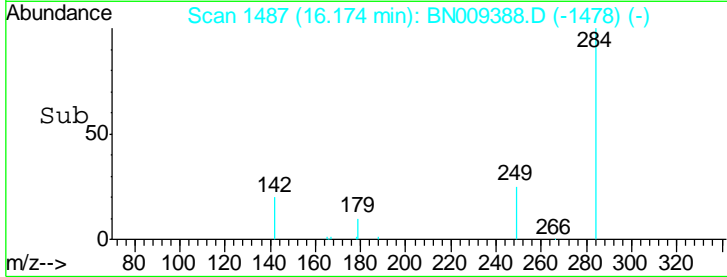
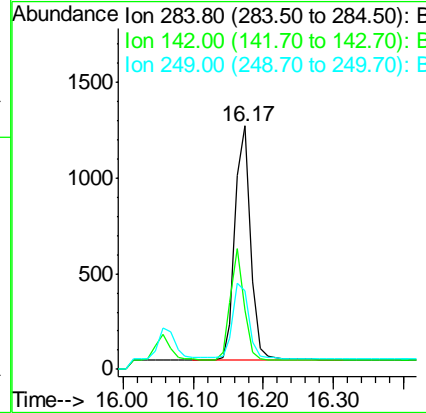
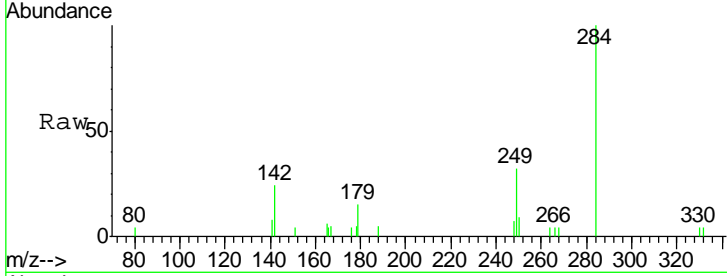




#21  
 Hexachlorobenzene  
 Concen: 0.378 ng  
 RT: 16.17 min Scan# 1487  
 Delta R.T. -0.00 min  
 Lab File: BN009388.D  
 Acq: 16 Jan 2020 17:32

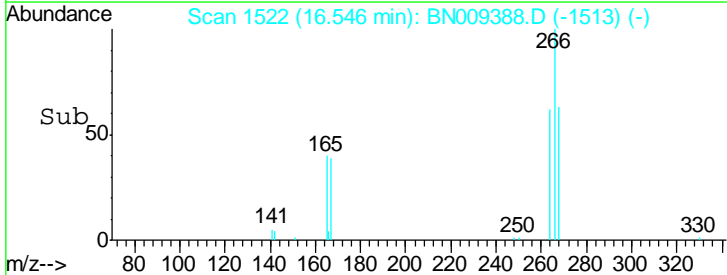
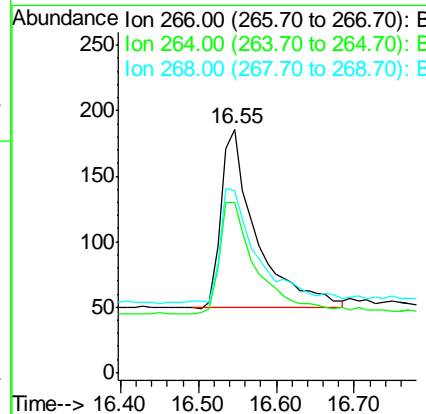
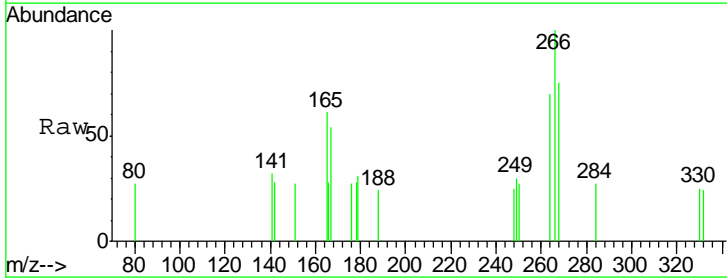
Instrument :  
 BNA\_N  
 ClientSampleId :  
 SSTDCCC0.4EC

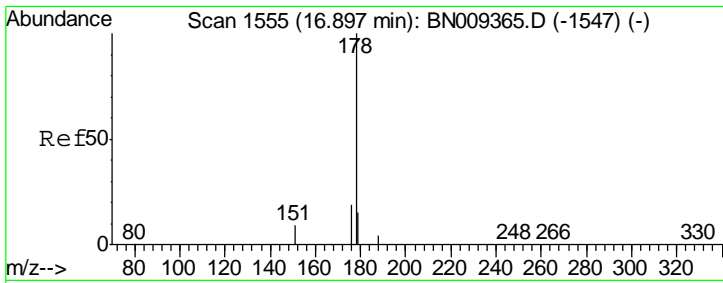
Tgt Ion	Resp	Lower	Upper
284	1871		
284	100		
142	42.5	33.8	50.8
249	33.5	27.0	40.4



#22  
 Pentachlorophenol  
 Concen: 0.388 ng  
 RT: 16.55 min Scan# 1522  
 Delta R.T. 0.00 min  
 Lab File: BN009388.D  
 Acq: 16 Jan 2020 17:32

Tgt Ion	Resp	Lower	Upper
266	422		
266	100		
264	69.9	57.8	86.6
268	74.7	63.8	95.6

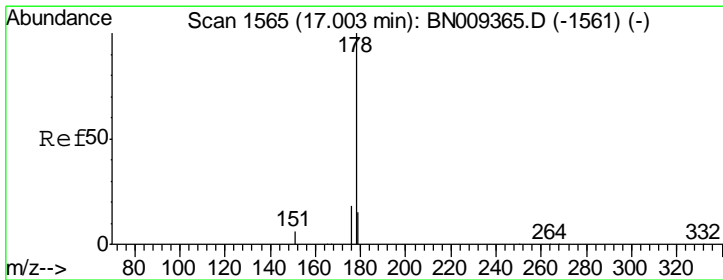
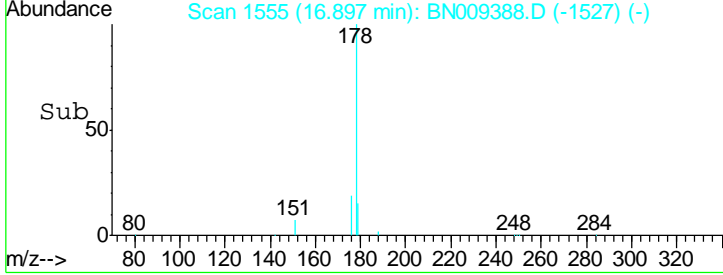
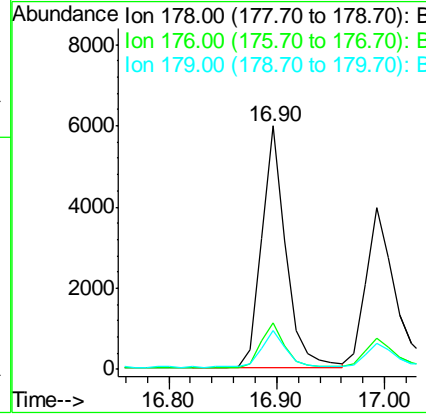
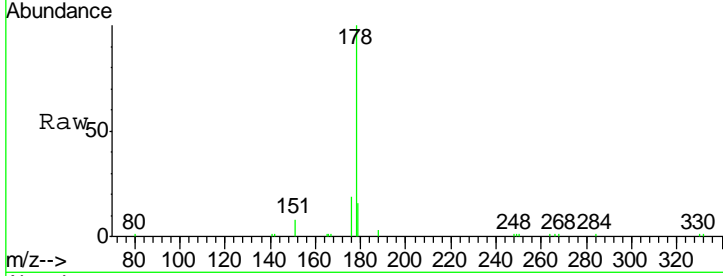




#23  
 Phenanthrene  
 Concen: 0.393 ng  
 RT: 16.90 min Scan# 1555  
 Delta R.T. -0.00 min  
 Lab File: BN009388.D  
 Acq: 16 Jan 2020 17:32

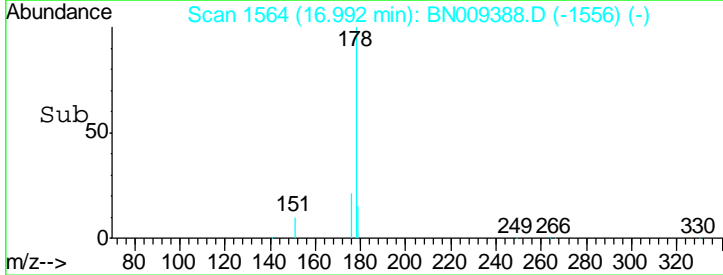
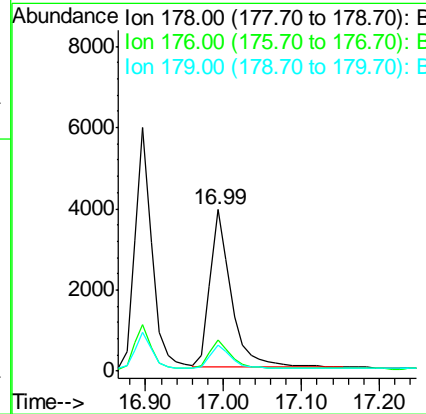
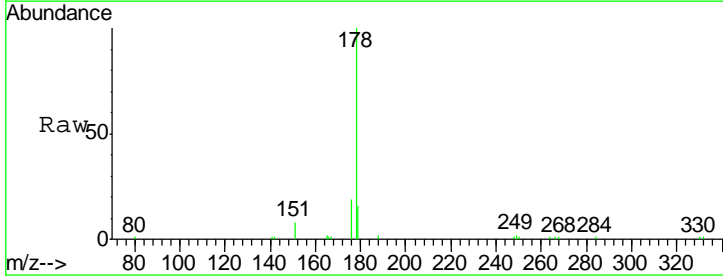
Instrument :  
 BNA\_N  
 ClientSampleId :  
 SSTDCCC0.4EC

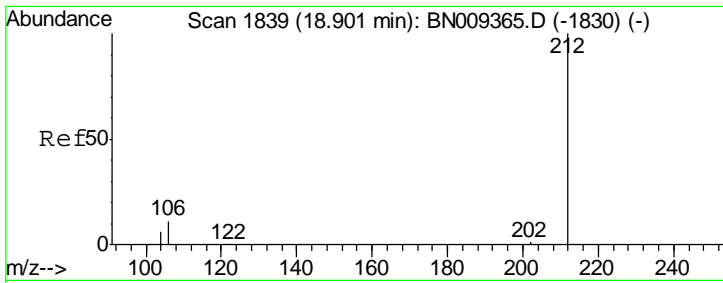
Tgt Ion	Resp	Lower	Upper
178	9103		
176	18.8	15.0	22.4
179	15.5	12.3	18.5



#24  
 Anthracene  
 Concen: 0.377 ng  
 RT: 16.99 min Scan# 1564  
 Delta R.T. -0.01 min  
 Lab File: BN009388.D  
 Acq: 16 Jan 2020 17:32

Tgt Ion	Resp	Lower	Upper
178	7343		
176	18.5	14.6	21.8
179	15.0	12.5	18.7



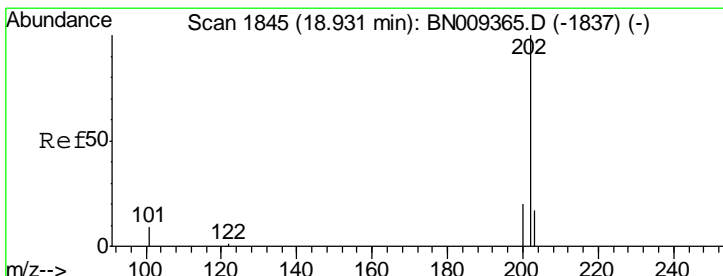
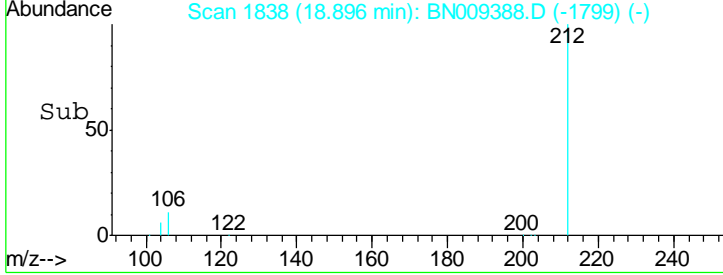
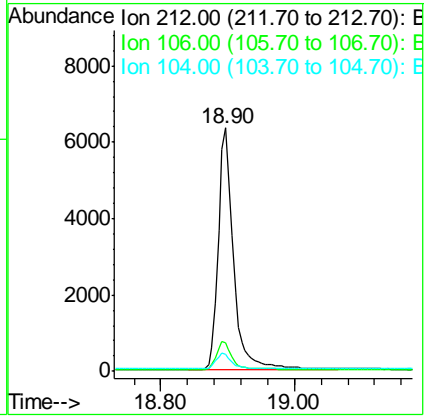
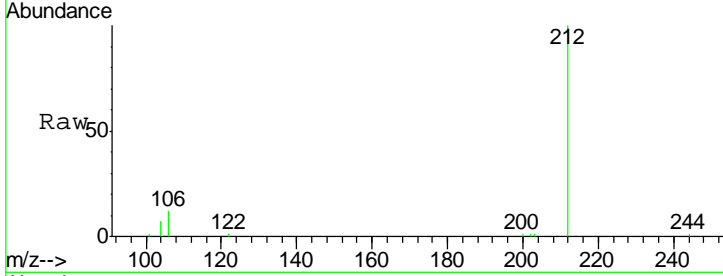


#25  
 Fluoranthene-d10  
 Concen: 0.382 ng  
 RT: 18.90 min Scan# 1838  
 Delta R.T. -0.01 min  
 Lab File: BN009388.D  
 Acq: 16 Jan 2020 17:32

Instrument :  
 BNA\_N  
 ClientSampleId :  
 SSTDCCC0.4EC

Tgt Ion: 212 Resp: 10100

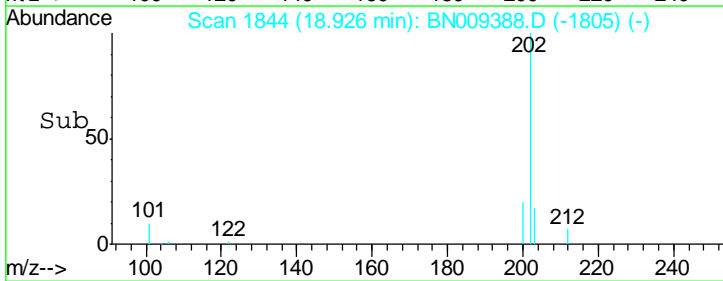
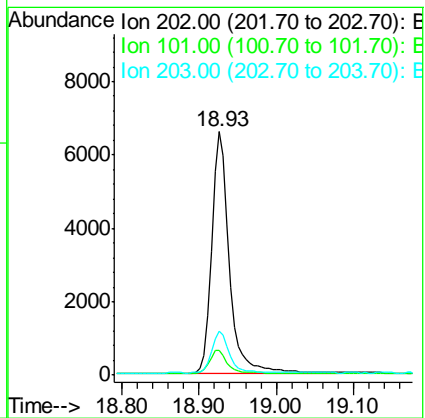
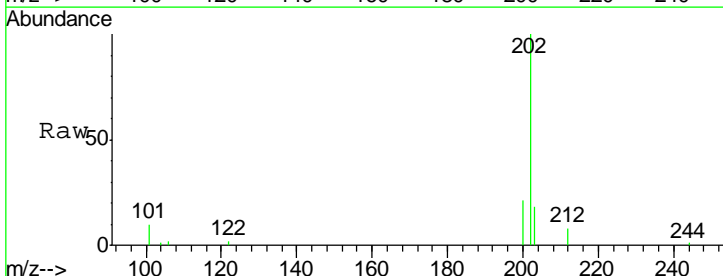
Ion	Ratio	Lower	Upper
212	100		
106	11.6	9.2	13.8
104	6.7	5.4	8.0

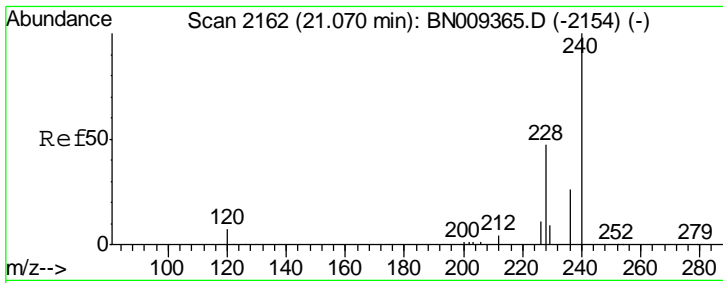


#26  
 Fluoranthene  
 Concen: 0.380 ng  
 RT: 18.93 min Scan# 1844  
 Delta R.T. -0.01 min  
 Lab File: BN009388.D  
 Acq: 16 Jan 2020 17:32

Tgt Ion: 202 Resp: 10332

Ion	Ratio	Lower	Upper
202	100		
101	9.7	8.0	12.0
203	17.1	13.5	20.3

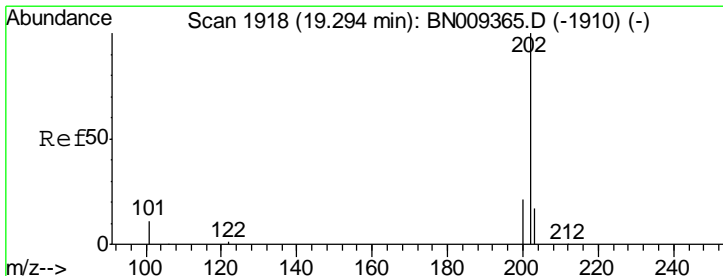
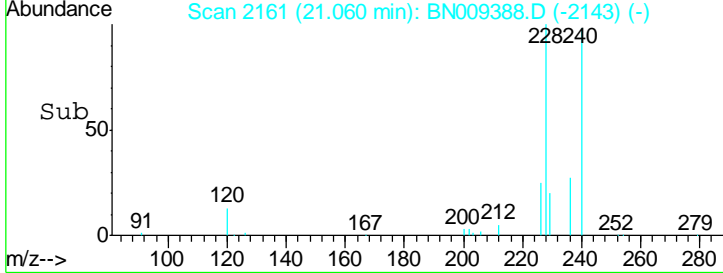
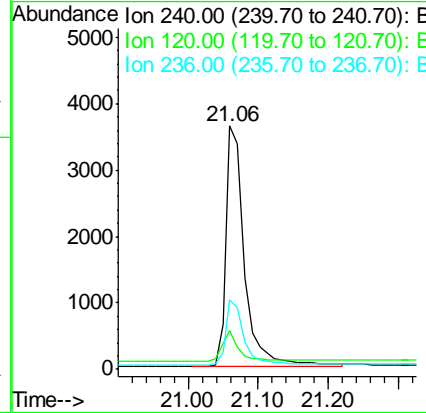
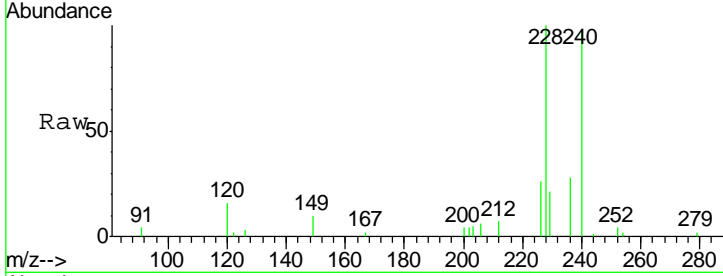




#27  
 Chrysene-d12  
 Concen: 0.400 ng  
 RT: 21.06 min Scan# 2161  
 Delta R.T. -0.01 min  
 Lab File: BN009388.D  
 Acq: 16 Jan 2020 17:32

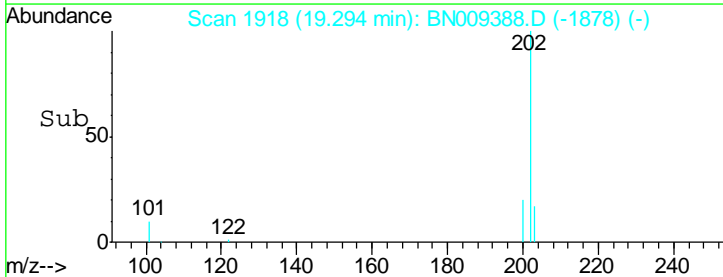
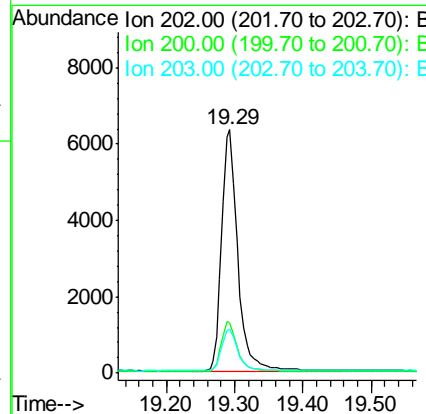
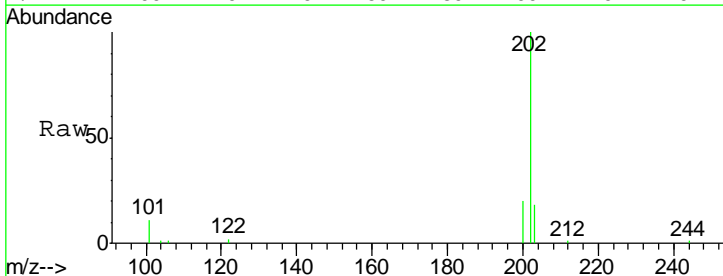
Instrument :  
 BNA\_N  
 ClientSampleId :  
 SSTDCCC0.4EC

Tgt Ion	Resp	Lower	Upper
240	6670		
240	100		
120	15.8	8.1	12.1#
236	28.7	22.2	33.4

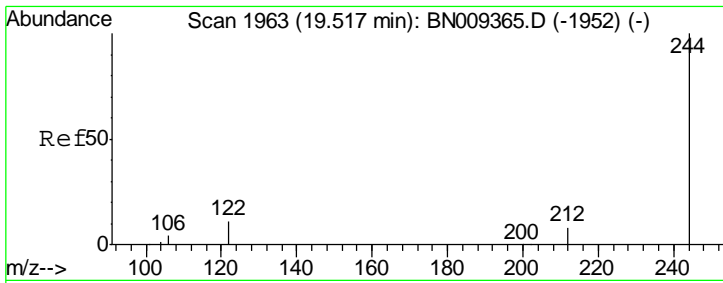


#28  
 Pyrene  
 Concen: 0.414 ng  
 RT: 19.29 min Scan# 1918  
 Delta R.T. -0.00 min  
 Lab File: BN009388.D  
 Acq: 16 Jan 2020 17:32

Tgt Ion	Resp	Lower	Upper
202	10461		
202	100		
200	20.0	16.2	24.2
203	17.3	14.1	21.1



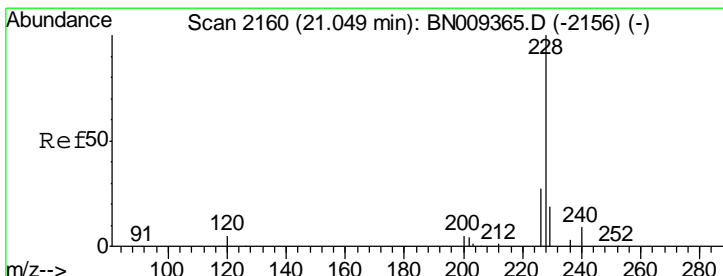
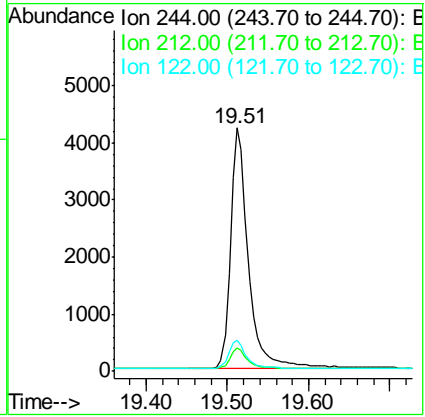
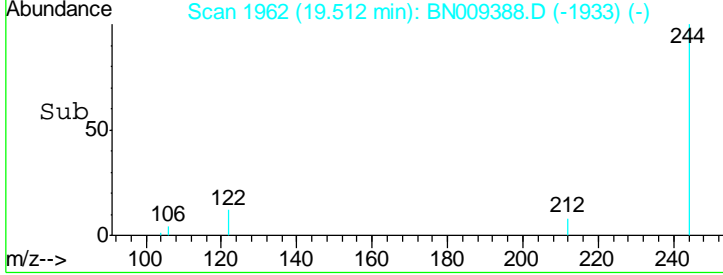
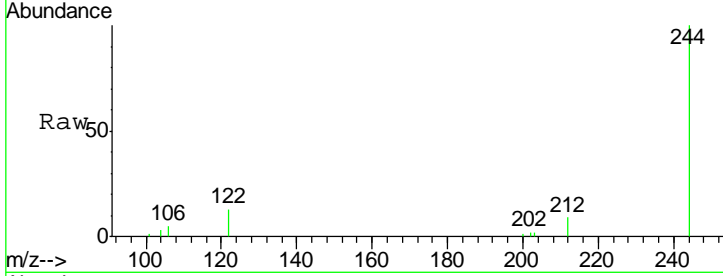




#29  
 Terphenyl-d14  
 Concen: 0.408 ng  
 RT: 19.51 min Scan# 1962  
 Delta R.T. -0.01 min  
 Lab File: BN009388.D  
 Acq: 16 Jan 2020 17:32

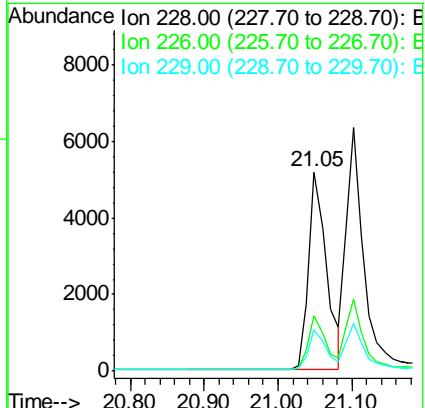
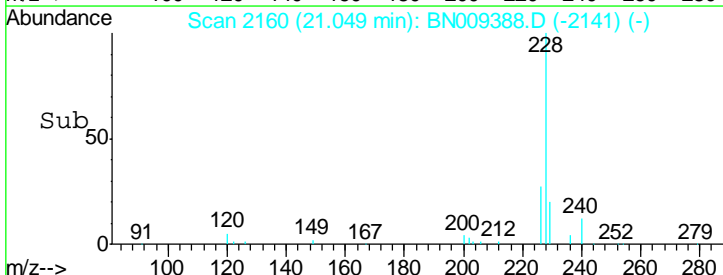
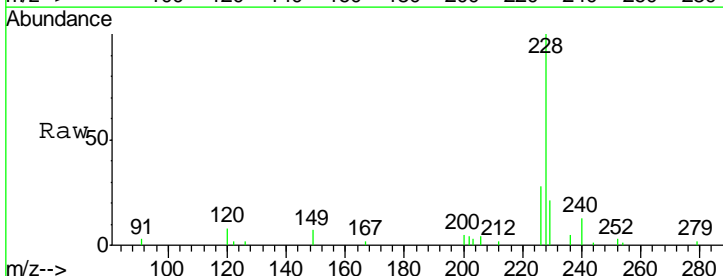
Instrument :  
 BNA\_N  
 ClientSampleId :  
 SSTDCCC0.4EC

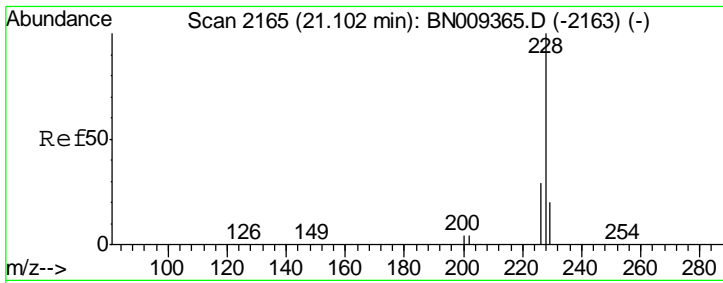
Tgt Ion	Resp	Lower	Upper
244	100		
212	9.4	7.5	11.3
122	12.8	9.8	14.6



#30  
 Benzo(a)anthracene  
 Concen: 0.388 ng  
 RT: 21.05 min Scan# 2160  
 Delta R.T. -0.00 min  
 Lab File: BN009388.D  
 Acq: 16 Jan 2020 17:32

Tgt Ion	Resp	Lower	Upper
228	100		
226	27.7	22.5	33.7
229	20.5	16.1	24.1

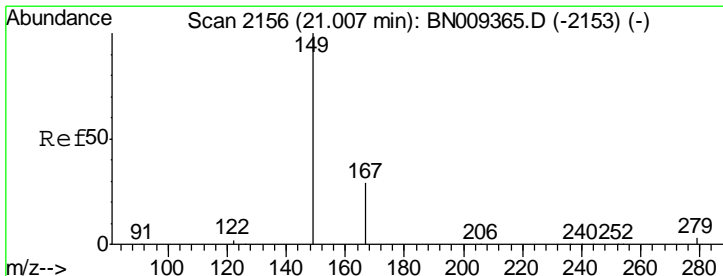
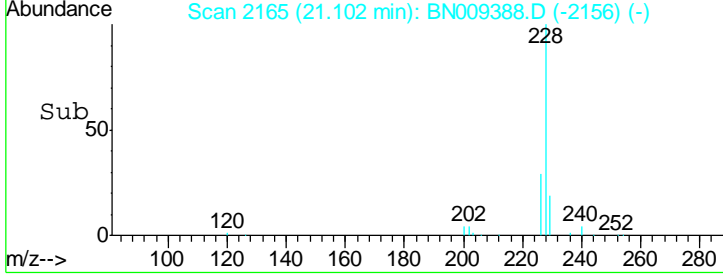
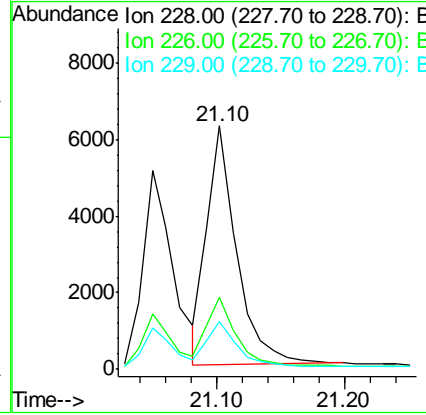
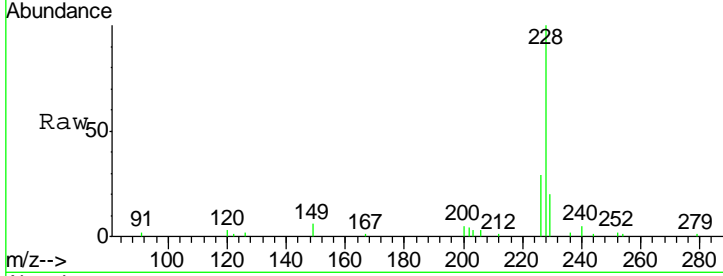




#31  
 Chrysene  
 Concen: 0.404 ng  
 RT: 21.10 min Scan# 2165  
 Delta R.T. -0.00 min  
 Lab File: BN009388.D  
 Acq: 16 Jan 2020 17:32

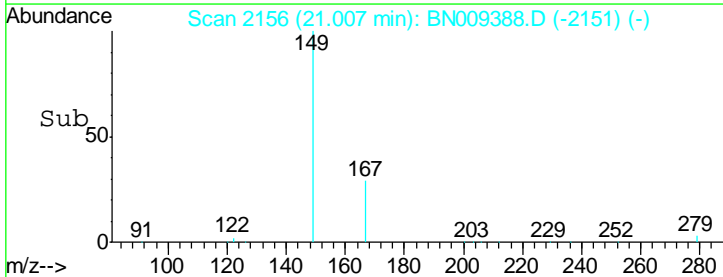
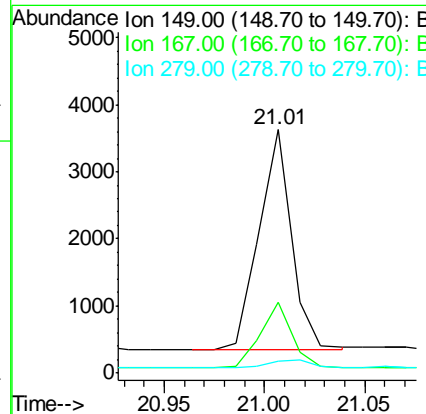
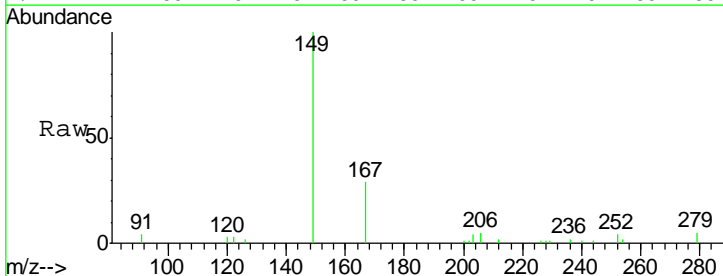
Instrument :  
 BNA\_N  
 ClientSampleId :  
 SSTDCCC0.4EC

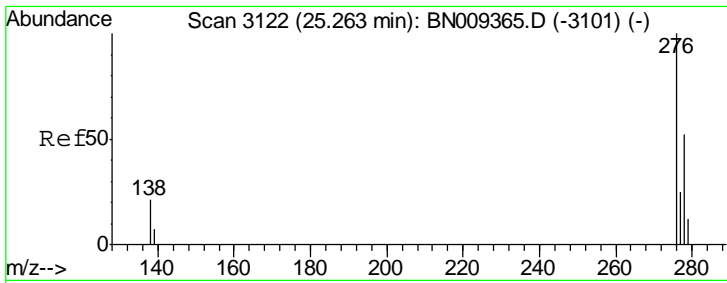
Tgt Ion	Resp	Lower	Upper
228	10125		
226	29.4	23.8	35.8
229	19.9	16.6	24.8



#32  
 Bis(2-ethylhexyl)phthalate  
 Concen: 0.378 ng  
 RT: 21.01 min Scan# 2156  
 Delta R.T. -0.00 min  
 Lab File: BN009388.D  
 Acq: 16 Jan 2020 17:32

Tgt Ion	Resp	Lower	Upper
149	3664		
167	29.3	22.9	34.3
279	4.3	3.4	5.0

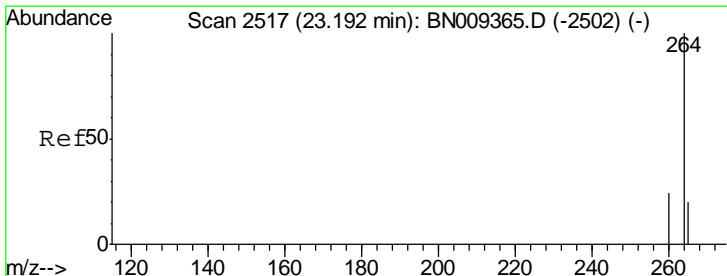
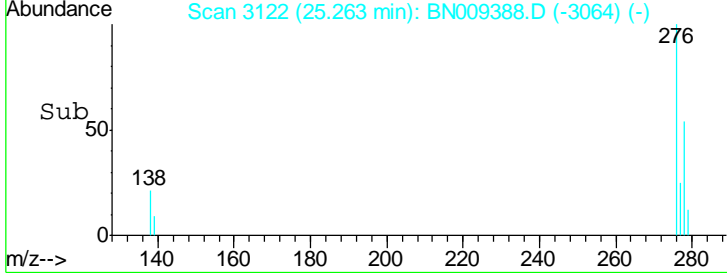
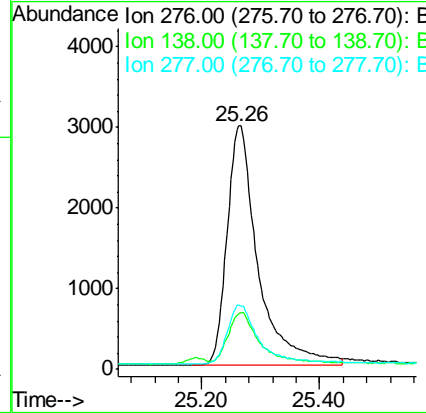
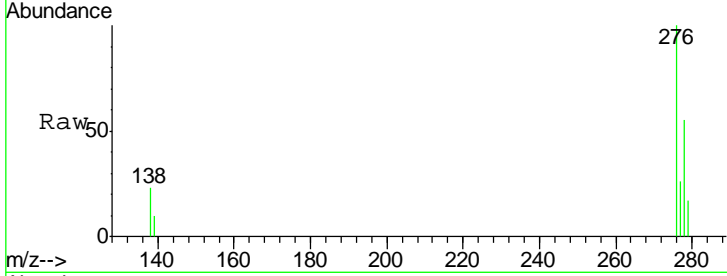




#33  
 Indeno(1,2,3-cd)pyrene  
 Concen: 0.418 ng  
 RT: 25.26 min Scan# 3122  
 Delta R.T. -0.00 min  
 Lab File: BN009388.D  
 Acq: 16 Jan 2020 17:32

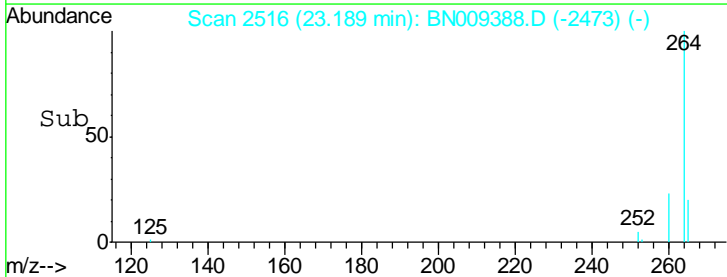
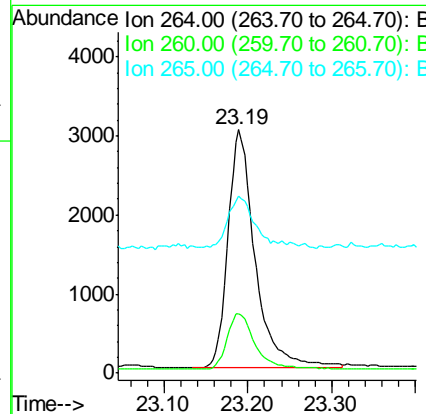
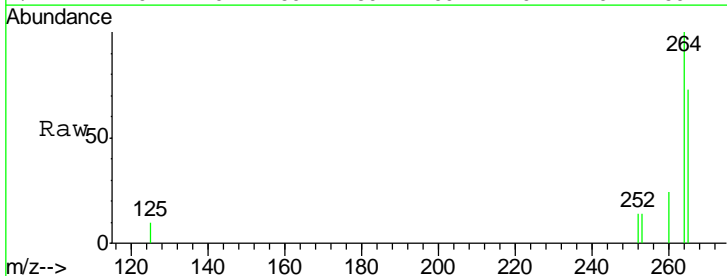
Instrument :  
 BNA\_N  
 ClientSampleId :  
 SSTDCCC0.4EC

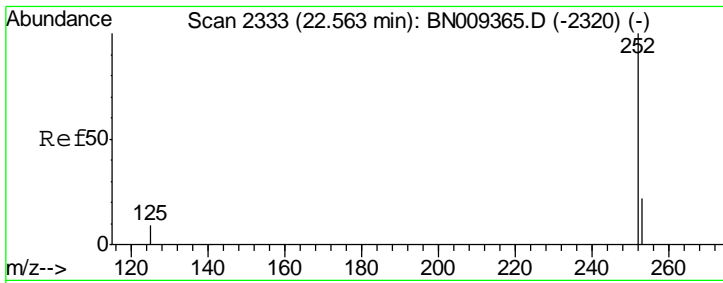
Tgt Ion	Resp	Lower	Upper
276	10904		
138	19.8	15.9	23.9
277	24.7	19.8	29.6



#34  
 Perylene-d12  
 Concen: 0.400 ng  
 RT: 23.19 min Scan# 2516  
 Delta R.T. -0.00 min  
 Lab File: BN009388.D  
 Acq: 16 Jan 2020 17:32

Tgt Ion	Resp	Lower	Upper
264	6773		
260	24.4	20.1	30.1
265	72.7	68.2	102.4

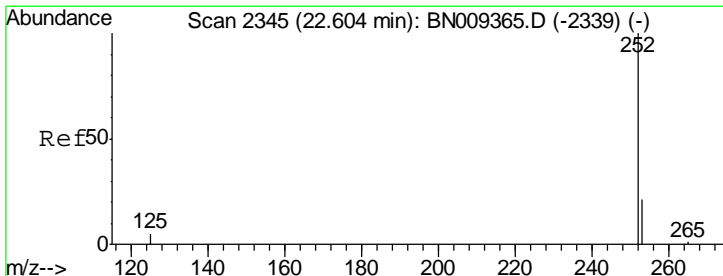
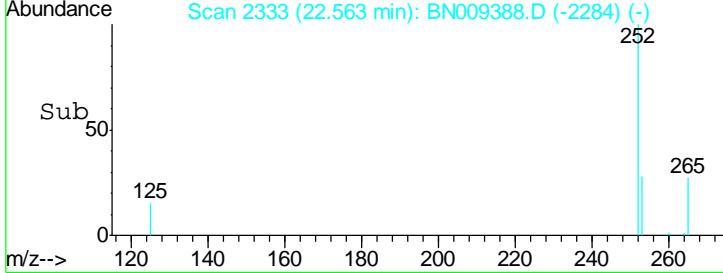
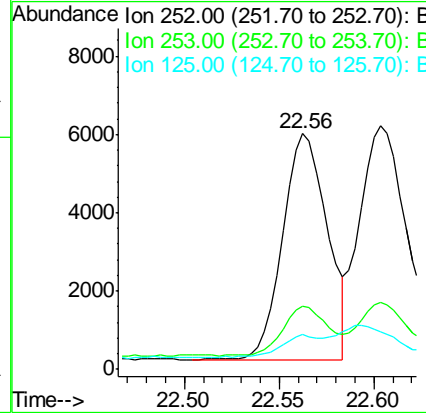
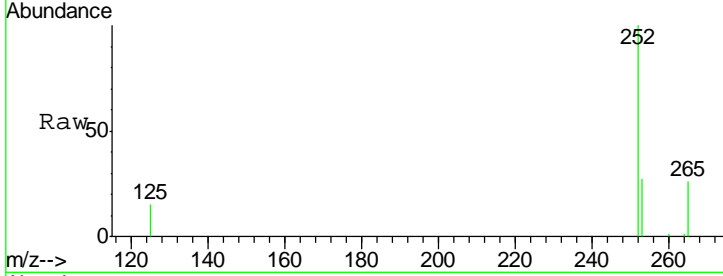




#35  
 Benzo(b)fluoranthene  
 Concen: 0.376 ng  
 RT: 22.56 min Scan# 2333  
 Delta R.T. -0.00 min  
 Lab File: BN009388.D  
 Acq: 16 Jan 2020 17:32

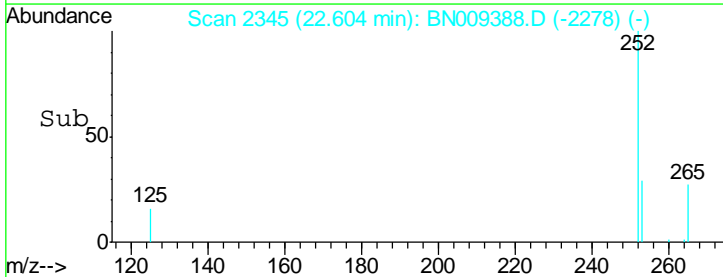
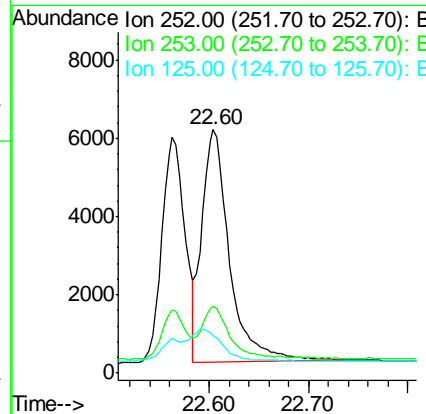
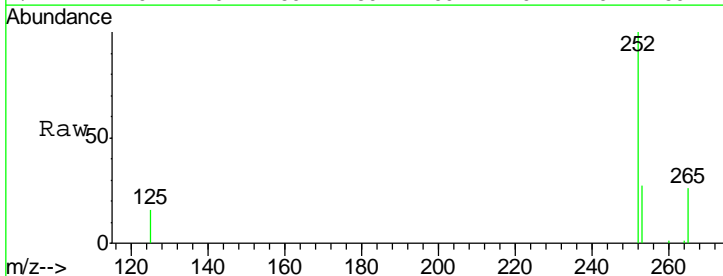
Instrument :  
 BNA\_N  
 ClientSampleId :  
 SSTDCCC0.4EC

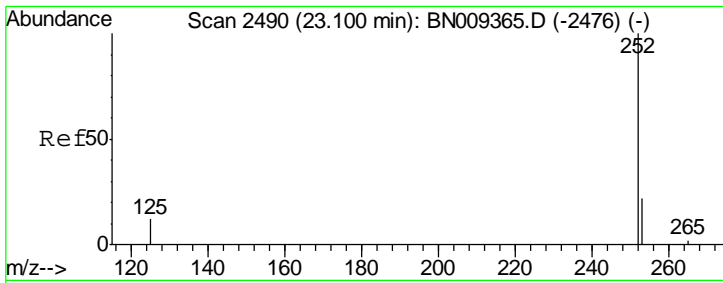
Tgt Ion	Resp	Lower	Upper
252	9355		
253	26.8	22.4	33.6
125	14.6	11.6	17.4



#36  
 Benzo(k)fluoranthene  
 Concen: 0.420 ng  
 RT: 22.60 min Scan# 2345  
 Delta R.T. -0.00 min  
 Lab File: BN009388.D  
 Acq: 16 Jan 2020 17:32

Tgt Ion	Resp	Lower	Upper
252	11561		
253	27.4	21.9	32.9
125	15.5	12.0	18.0

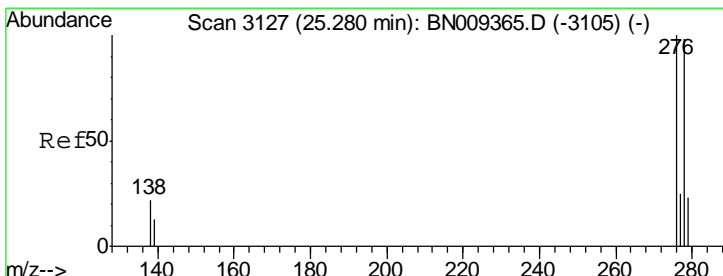
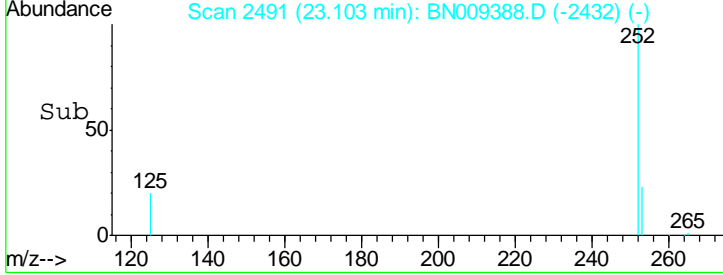
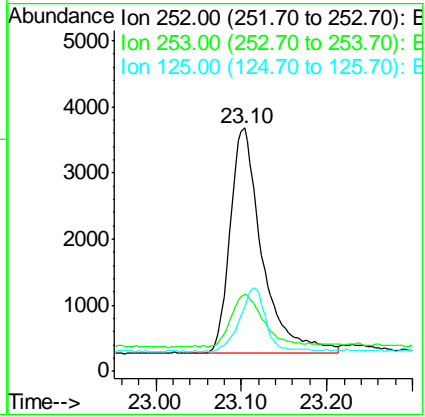
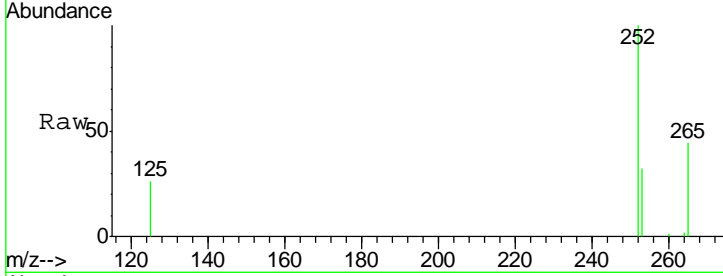




#37  
 Benzo(a)pyrene  
 Concen: 0.404 ng  
 RT: 23.10 min Scan# 2491  
 Delta R.T. 0.00 min  
 Lab File: BN009388.D  
 Acq: 16 Jan 2020 17:32

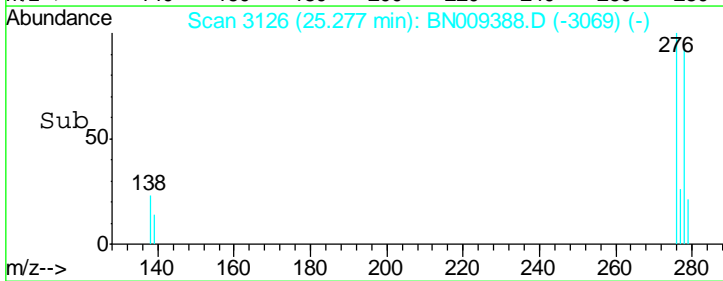
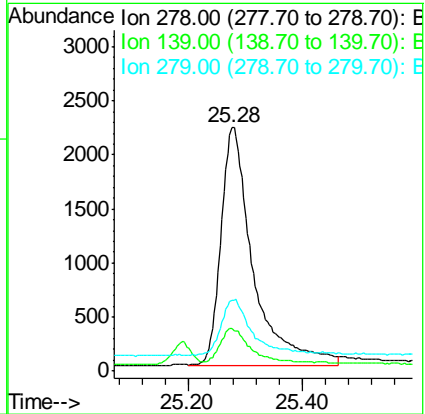
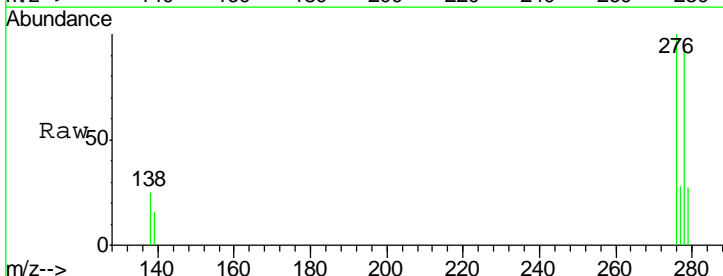
Instrument :  
 BNA\_N  
 ClientSampleId :  
 SSTDCCC0.4EC

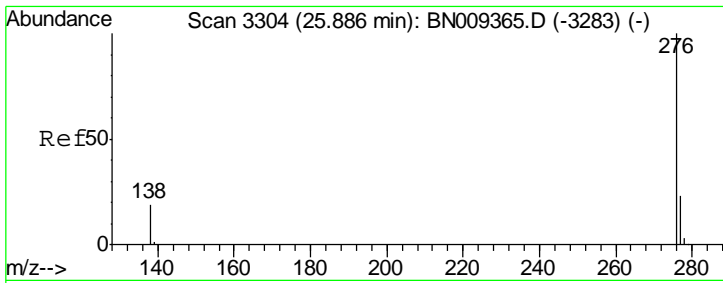
Tgt Ion	Resp	Lower	Upper
252	100		
253	31.6	25.4	38.0
125	26.4	16.2	24.2



#38  
 Dibenzo(a,h)anthracene  
 Concen: 0.389 ng  
 RT: 25.28 min Scan# 3126  
 Delta R.T. -0.00 min  
 Lab File: BN009388.D  
 Acq: 16 Jan 2020 17:32

Tgt Ion	Resp	Lower	Upper
278	100		
139	17.5	14.5	21.7
279	28.9	24.2	36.4

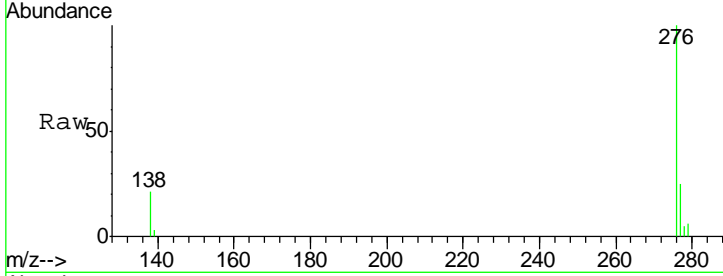




#39  
 Benzo(a,h,i)perylene  
 Concen: 0.391 ng  
 RT: 25.90 min Scan# 3307  
 Delta R.T. 0.01 min  
 Lab File: BN009388.D  
 Acq: 16 Jan 2020 17:32

Instrument :  
 BNA\_N  
 ClientSampled :  
 SSTDCCC0.4EC

Tot Ion	Ion	Resp	Lower	Upper
9498	276			
	276	100		
	277	25.3	20.6	30.8
	138	21.4	17.1	25.7



Abundance Ion 276.00 (275.70 to 276.70): E  
 Ion 277.00 (276.70 to 277.70): E  
 Ion 138.00 (137.70 to 138.70): E

