

Data Path : Z:\svoasrv\HPCHEM1\BNA_N\Data\BN012324\
 Data File : BN029342.D
 Acq On : 23 Jan 2024 11:58
 Operator : MA/JU
 Sample : PB158557BL
 Misc :
 ALS Vial : 3 Sample Multiplier: 1

Instrument :
 BNA_N
 ClientSampleId :
 PB158557BL

Quant Time: Jan 23 12:25:42 2024
 Quant Method : Z:\svoasrv\HPCHEM1\BNA_N\Methods\8270-SIM-BN012224.M
 Quant Title : ASP BNA STANDARDS FOR 5 POINT CALIBRATION
 QLast Update : Tue Jan 23 02:16:14 2024
 Response via : Initial Calibration

Compound	R.T.	QIon	Response	Conc	Units	Dev(Min)
Internal Standards						
1) 1,4-Dichlorobenzene-d4	7.905	152	4241	0.400	ng	-0.01
7) Naphthalene-d8	10.712	136	11414	0.400	ng	0.00
13) Acenaphthene-d10	14.554	164	5473	0.400	ng	0.00
19) Phenanthrene-d10	17.305	188	12938	0.400	ng	0.00
29) Chrysene-d12	21.510	240	10975	0.400	ng	# 0.00
35) Perylene-d12	23.911	264	11453	0.400	ng	0.00
System Monitoring Compounds						
4) 2-Fluorophenol	5.478	112	4071	0.362	ng	0.00
5) Phenol-d6	7.067	99	5342	0.355	ng	0.00
8) Nitrobenzene-d5	9.067	82	3431	0.284	ng	-0.01
11) 2-Methylnaphthalene-d10	12.303	152	5113	0.271	ng	0.00
14) 2,4,6-Tribromophenol	16.051	330	550	0.193	ng	0.00
15) 2-Fluorobiphenyl	13.185	172	8098	0.307	ng	0.00
27) Fluoranthene-d10	19.341	212	10478	0.273	ng	0.00
31) Terphenyl-d14	19.949	244	8203	0.292	ng	0.00

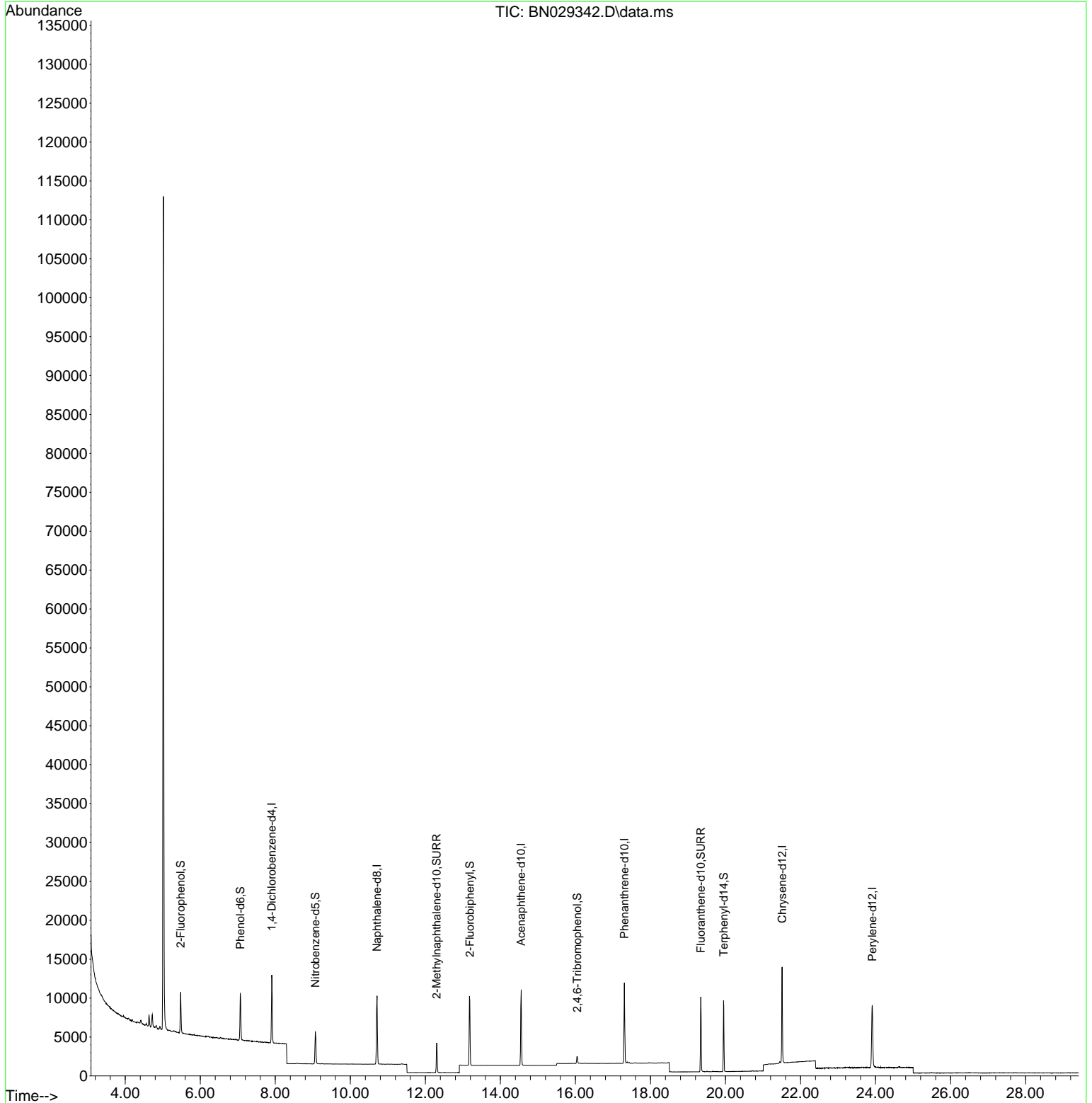
Target Compounds Qvalue

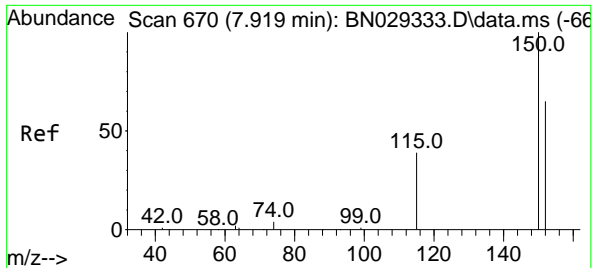
(#) = qualifier out of range (m) = manual integration (+) = signals summed

Data Path : Z:\svoasrv\HPCHEM1\BNA_N\Data\BN012324\
 Data File : BN029342.D
 Acq On : 23 Jan 2024 11:58
 Operator : MA/JU
 Sample : PB158557BL
 Misc :
 ALS Vial : 3 Sample Multiplier: 1

Instrument :
 BNA_N
 ClientSampleId :
 PB158557BL

Quant Time: Jan 23 12:25:42 2024
 Quant Method : Z:\svoasrv\HPCHEM1\BNA_N\Methods\8270-SIM-BN012224.M
 Quant Title : ASP BNA STANDARDS FOR 5 POINT CALIBRATION
 QLast Update : Tue Jan 23 02:16:14 2024
 Response via : Initial Calibration

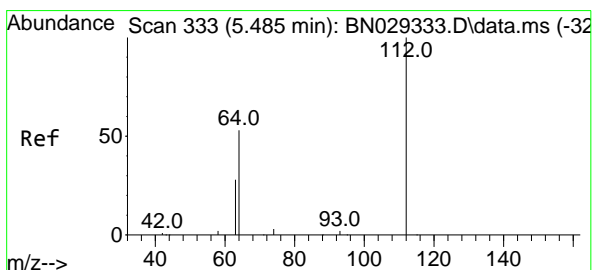
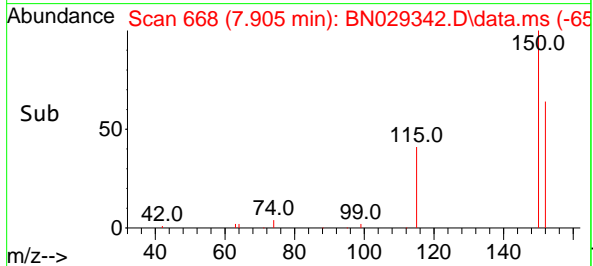
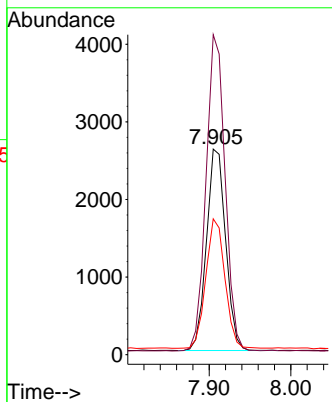
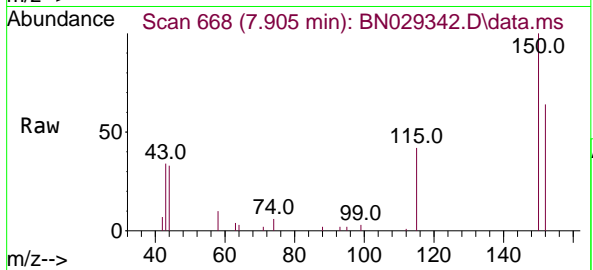




#1
 1,4-Dichlorobenzene-d4
 Concen: 0.400 ng
 RT: 7.905 min Scan# 60
 Delta R.T. -0.014 min
 Lab File: BN029342.D
 Acq: 23 Jan 2024 11:58

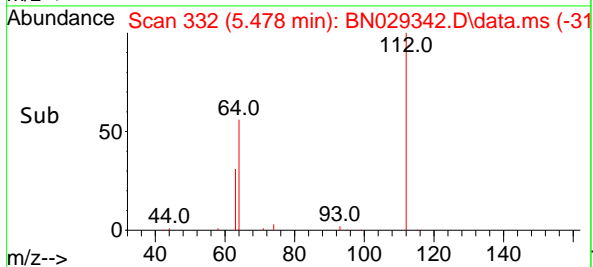
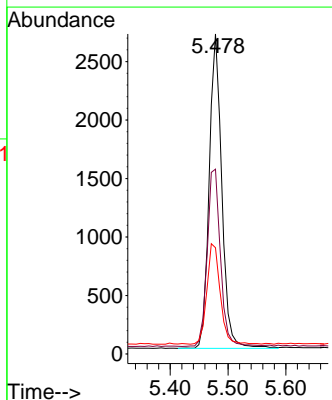
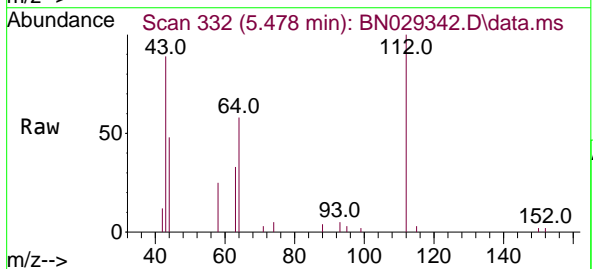
Instrument :
 BNA_N
 ClientSampleId :
 PB158557BL

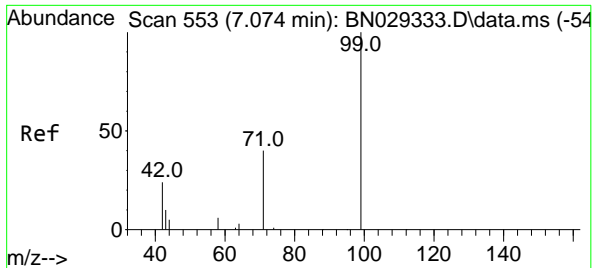
Tgt Ion:152 Resp: 4241
 Ion Ratio Lower Upper
 152 100
 150 155.7 121.1 181.7
 115 66.1 49.8 74.6



#4
 2-Fluorophenol
 Concen: 0.362 ng
 RT: 5.478 min Scan# 332
 Delta R.T. -0.007 min
 Lab File: BN029342.D
 Acq: 23 Jan 2024 11:58

Tgt Ion:112 Resp: 4071
 Ion Ratio Lower Upper
 112 100
 64 59.8 47.6 71.4
 63 33.9 27.0 40.6



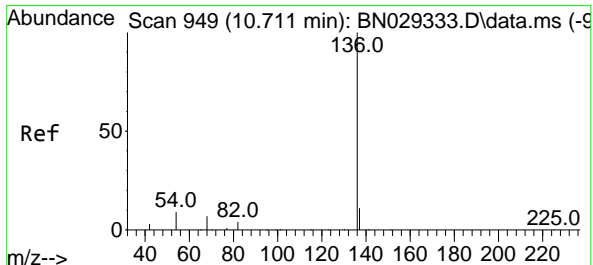
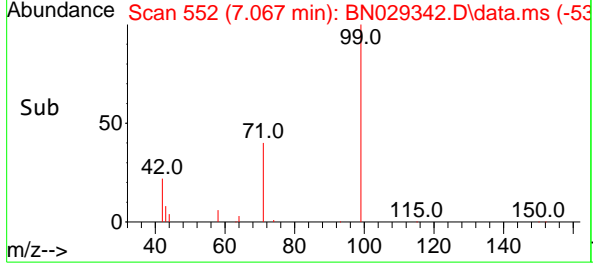
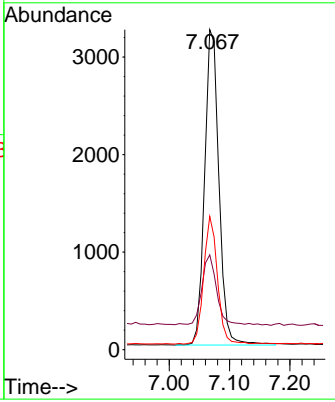
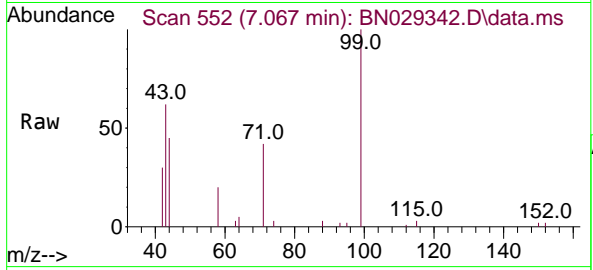


#5
Phenol-d6
Concen: 0.355 ng
RT: 7.067 min Scan# 511
Delta R.T. -0.007 min
Lab File: BN029342.D
Acq: 23 Jan 2024 11:58

Instrument : BNA_N
ClientSampleId : PB158557BL

Tgt Ion: 99 Resp: 5342

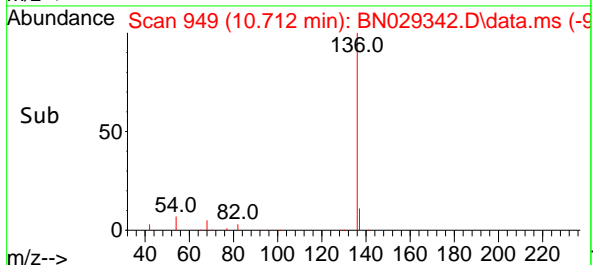
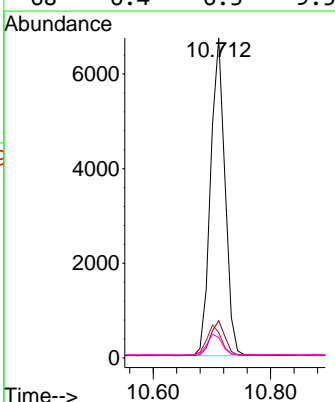
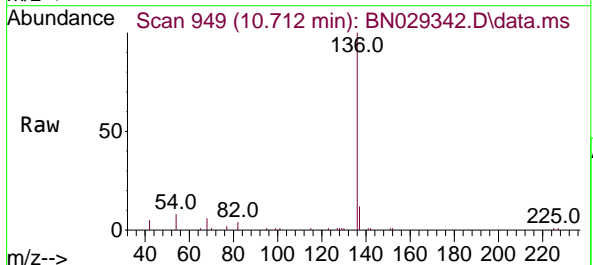
Ion	Ratio	Lower	Upper
99	100		
42	22.4	19.3	28.9
71	38.9	31.0	46.6

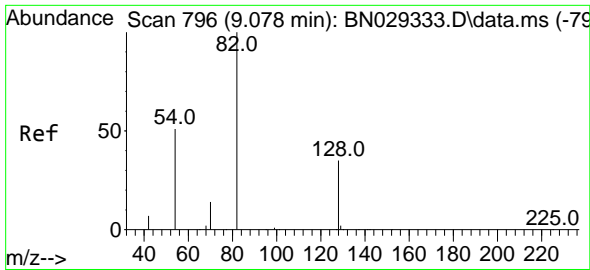


#7
Naphthalene-d8
Concen: 0.400 ng
RT: 10.712 min Scan# 949
Delta R.T. 0.000 min
Lab File: BN029342.D
Acq: 23 Jan 2024 11:58

Tgt Ion: 136 Resp: 11414

Ion	Ratio	Lower	Upper
136	100		
137	11.6	9.4	14.0
54	7.9	7.9	11.9
68	6.4	6.3	9.5



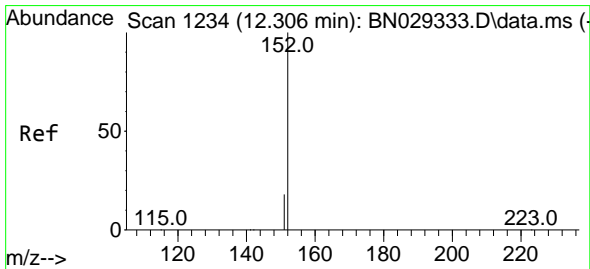
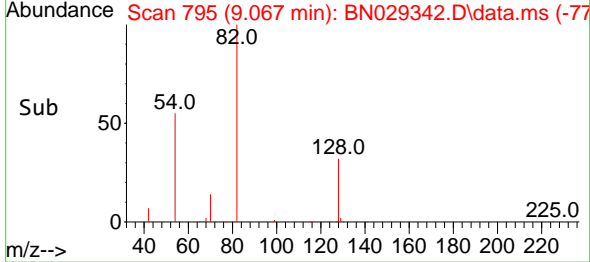
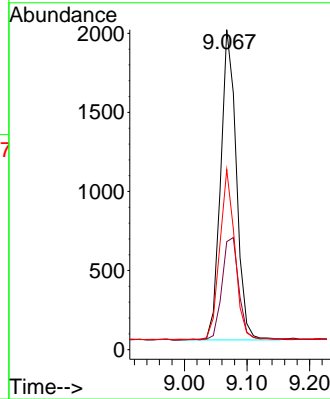
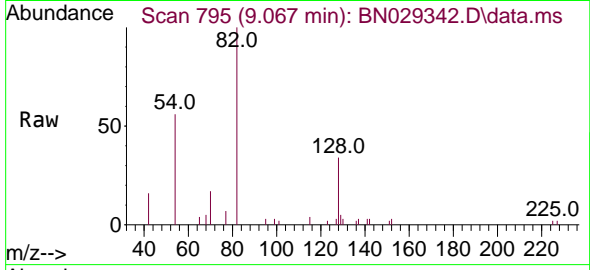


#8
 Nitrobenzene-d5
 Concen: 0.284 ng
 RT: 9.067 min Scan# 796
 Delta R.T. -0.010 min
 Lab File: BN029342.D
 Acq: 23 Jan 2024 11:58

Instrument :
 BNA_N
 ClientSampleId :
 PB158557BL

Tgt Ion: 82 Resp: 3431

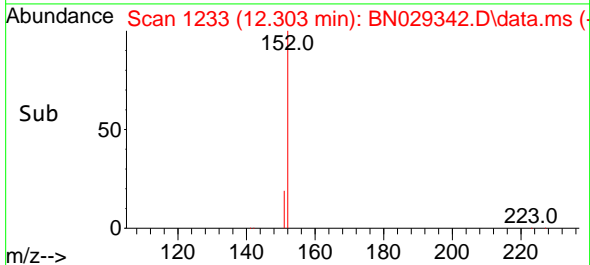
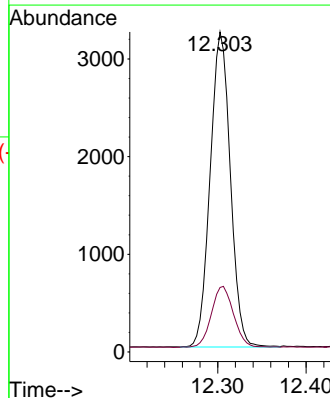
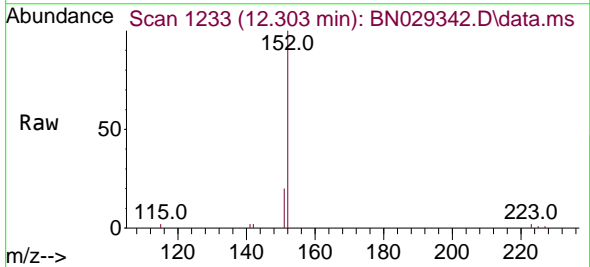
Ion	Ratio	Lower	Upper
82	100		
128	33.8	29.8	44.6
54	56.3	42.5	63.7

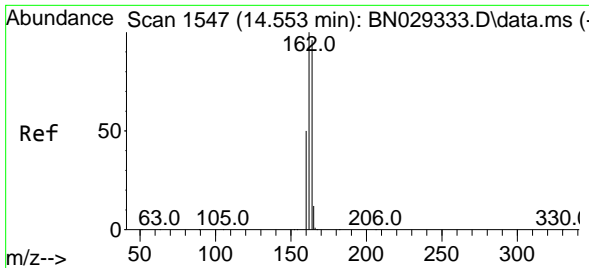


#11
 2-Methylnaphthalene-d10
 Concen: 0.271 ng
 RT: 12.303 min Scan# 1233
 Delta R.T. -0.003 min
 Lab File: BN029342.D
 Acq: 23 Jan 2024 11:58

Tgt Ion: 152 Resp: 5113

Ion	Ratio	Lower	Upper
152	100		
151	21.4	16.9	25.3

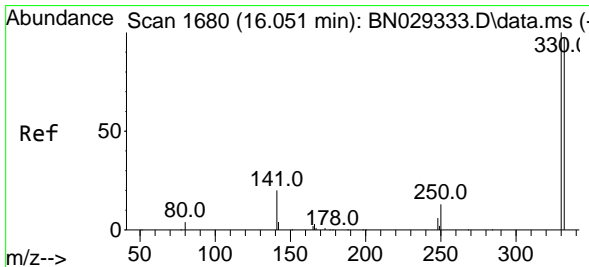
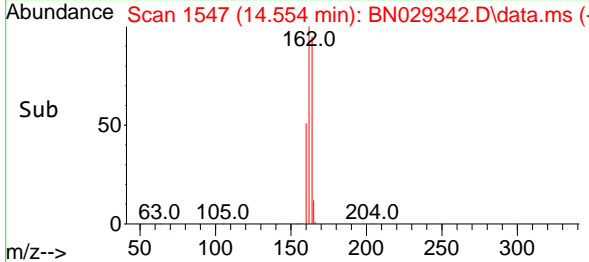
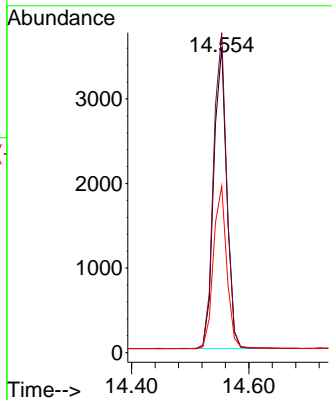
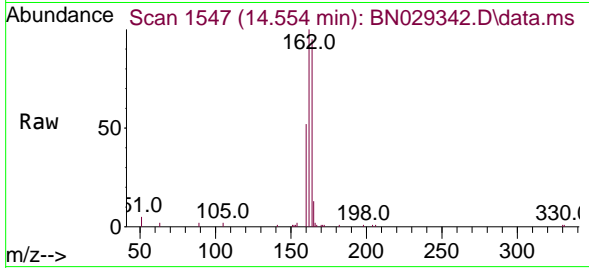




#13
 Acenaphthene-d10
 Concen: 0.400 ng
 RT: 14.554 min Scan# 11
 Delta R.T. 0.000 min
 Lab File: BN029342.D
 Acq: 23 Jan 2024 11:58

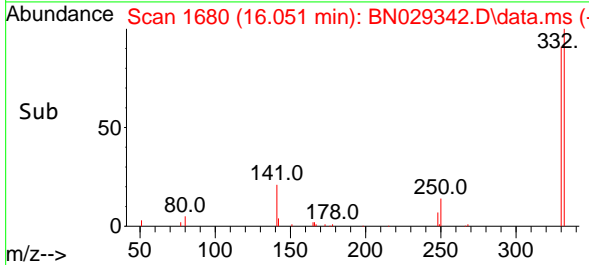
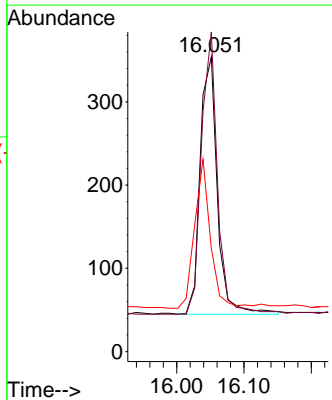
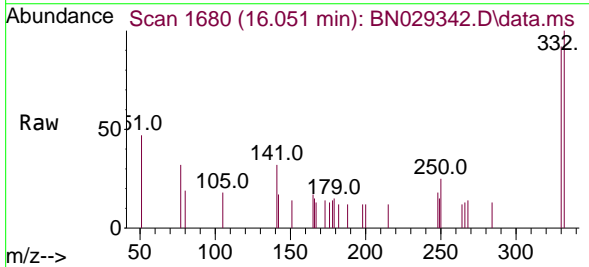
Instrument : BNA_N
 ClientSampleId : PB158557BL

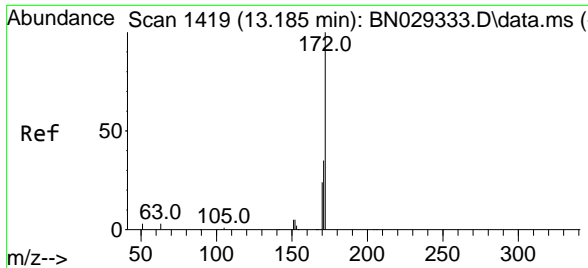
Tgt Ion	Resp	Lower	Upper
164	5473		
162	104.8	83.5	125.3
160	54.5	42.1	63.1



#14
 2,4,6-Tribromophenol
 Concen: 0.193 ng
 RT: 16.051 min Scan# 1680
 Delta R.T. 0.000 min
 Lab File: BN029342.D
 Acq: 23 Jan 2024 11:58

Tgt Ion	Resp	Lower	Upper
330	550		
332	102.5	77.3	115.9
141	53.5	37.2	55.8

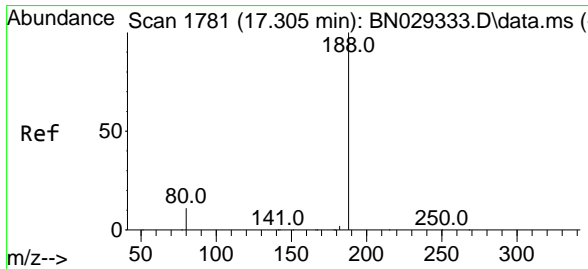
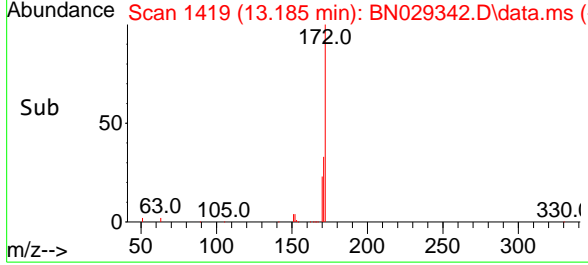
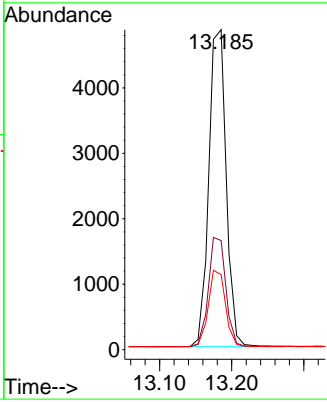
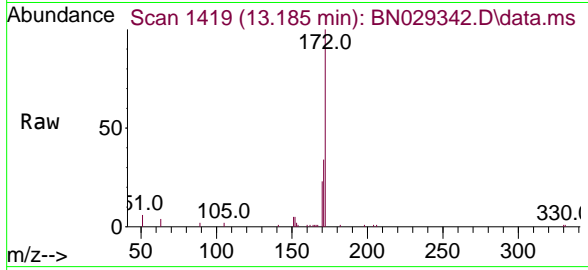




#15
 2-Fluorobiphenyl
 Concen: 0.307 ng
 RT: 13.185 min Scan# 1419
 Delta R.T. 0.000 min
 Lab File: BN029342.D
 Acq: 23 Jan 2024 11:58

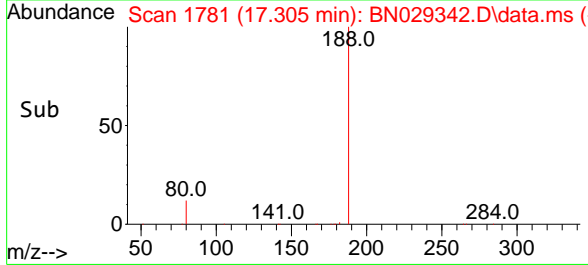
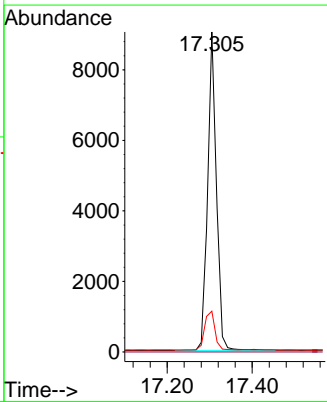
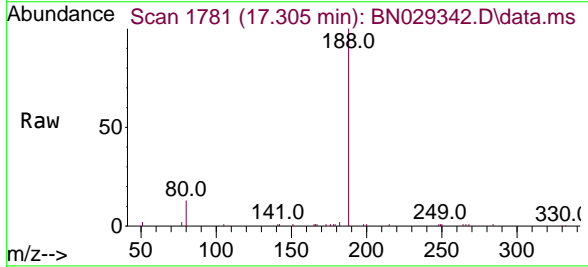
Instrument : BNA_N
 ClientSampleId : PB158557BL

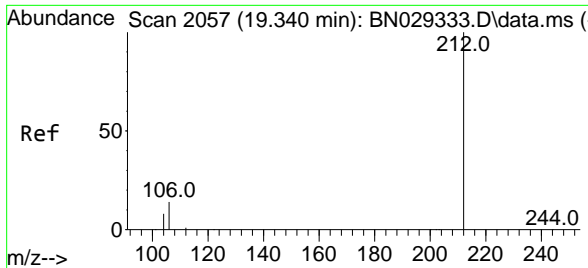
Tgt Ion	Resp	Lower	Upper
172	100		
171	34.1	28.2	42.2
170	23.5	19.3	28.9



#19
 Phenanthrene-d10
 Concen: 0.400 ng
 RT: 17.305 min Scan# 1781
 Delta R.T. 0.000 min
 Lab File: BN029342.D
 Acq: 23 Jan 2024 11:58

Tgt Ion	Resp	Lower	Upper
188	100		
94	0.0	0.0	0.0
80	12.8	9.4	14.2



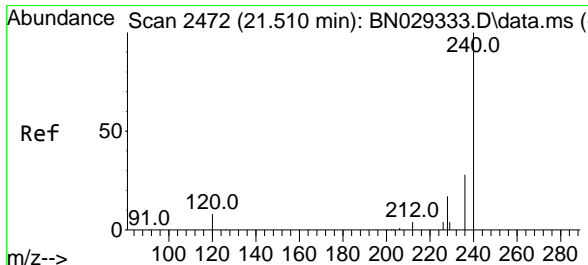
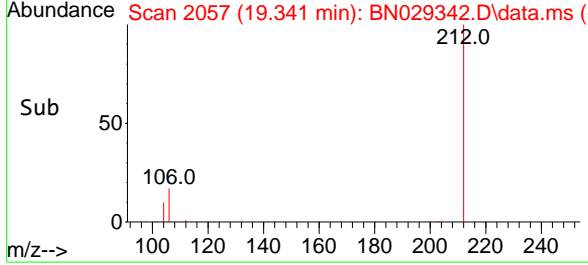
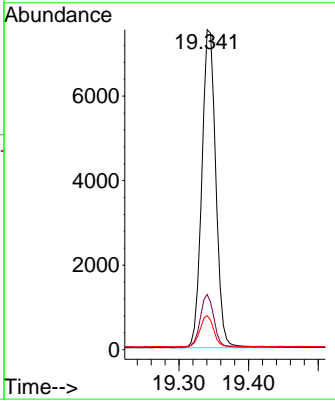
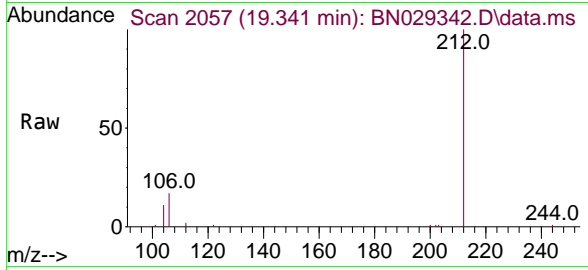


#27
 Fluoranthene-d10
 Concen: 0.273 ng
 RT: 19.341 min Scan# 2057
 Delta R.T. 0.000 min
 Lab File: BN029342.D
 Acq: 23 Jan 2024 11:58

Instrument : BNA_N
 Client Sample Id : PB158557BL

Tgt Ion: 212 Resp: 10478

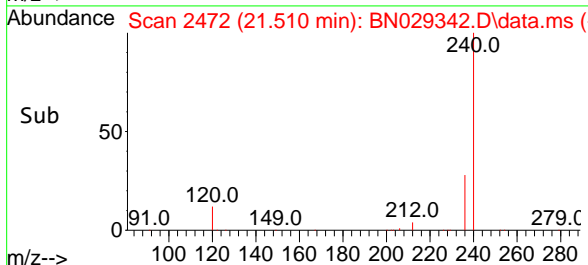
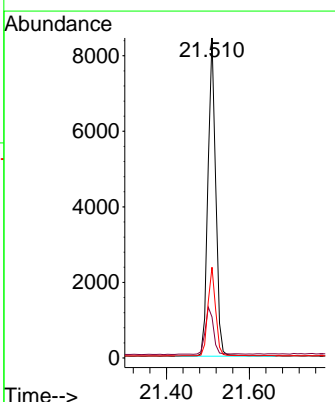
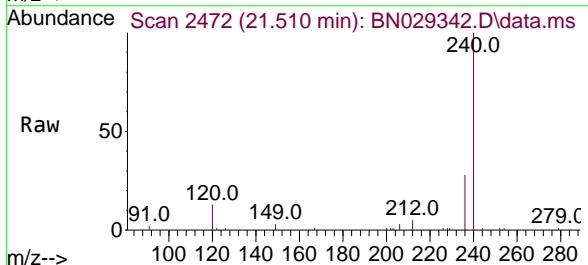
Ion	Ratio	Lower	Upper
212	100		
106	16.2	11.4	17.0
104	9.6	6.8	10.2

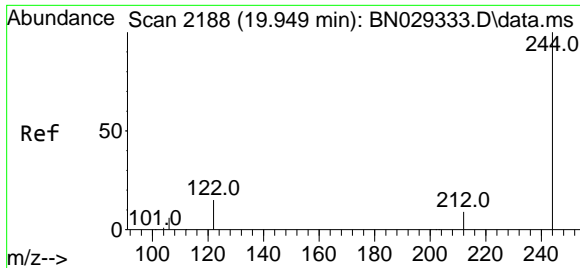


#29
 Chrysene-d12
 Concen: 0.400 ng
 RT: 21.510 min Scan# 2472
 Delta R.T. 0.000 min
 Lab File: BN029342.D
 Acq: 23 Jan 2024 11:58

Tgt Ion: 240 Resp: 10975

Ion	Ratio	Lower	Upper
240	100		
120	12.8	7.8	11.6
236	28.3	23.0	34.4



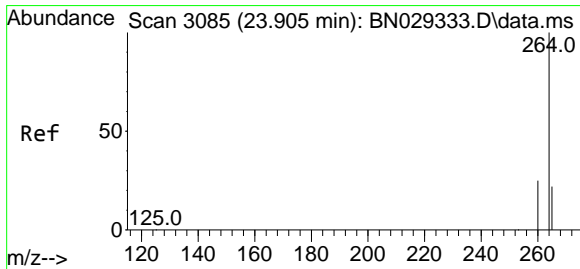
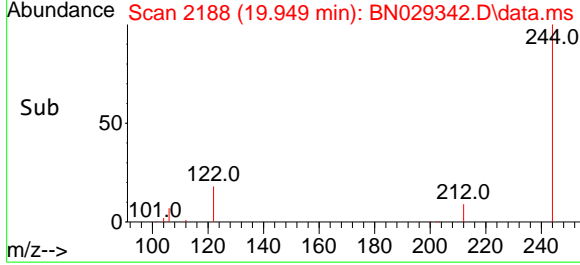
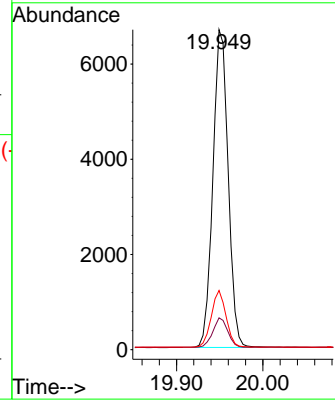
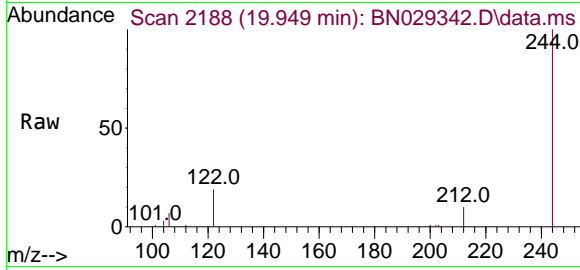


#31
 Terphenyl-d14
 Concen: 0.292 ng
 RT: 19.949 min Scan# 2188
 Delta R.T. 0.000 min
 Lab File: BN029342.D
 Acq: 23 Jan 2024 11:58

Instrument : BNA_N
 ClientSampleId : PB158557BL

Tgt Ion:244 Resp: 8203

Ion	Ratio	Lower	Upper
244	100		
212	9.9	7.6	11.4
122	18.5	12.8	19.2



#35
 Perylene-d12
 Concen: 0.400 ng
 RT: 23.911 min Scan# 3087
 Delta R.T. 0.006 min
 Lab File: BN029342.D
 Acq: 23 Jan 2024 11:58

Tgt Ion:264 Resp: 11453

Ion	Ratio	Lower	Upper
264	100		
260	25.8	20.6	31.0
265	30.6	24.8	37.2

