

Data Path : Z:\svoasrv\HPCHEM1\BNA_N\Data\BN012324\
 Data File : BN029355.D
 Acq On : 23 Jan 2024 19:48
 Operator : MA/JU
 Sample : P1215-02
 Misc :
 ALS Vial : 16 Sample Multiplier: 1

Instrument :
 BNA_N
 ClientSampleId :
 BP-VPB-195-GW-400-402

Quant Time: Jan 24 01:09:50 2024
 Quant Method : Z:\svoasrv\HPCHEM1\BNA_N\Methods\8270-SIM-BN012224.M
 Quant Title : ASP BNA STANDARDS FOR 5 POINT CALIBRATION
 QLast Update : Tue Jan 23 02:16:14 2024
 Response via : Initial Calibration

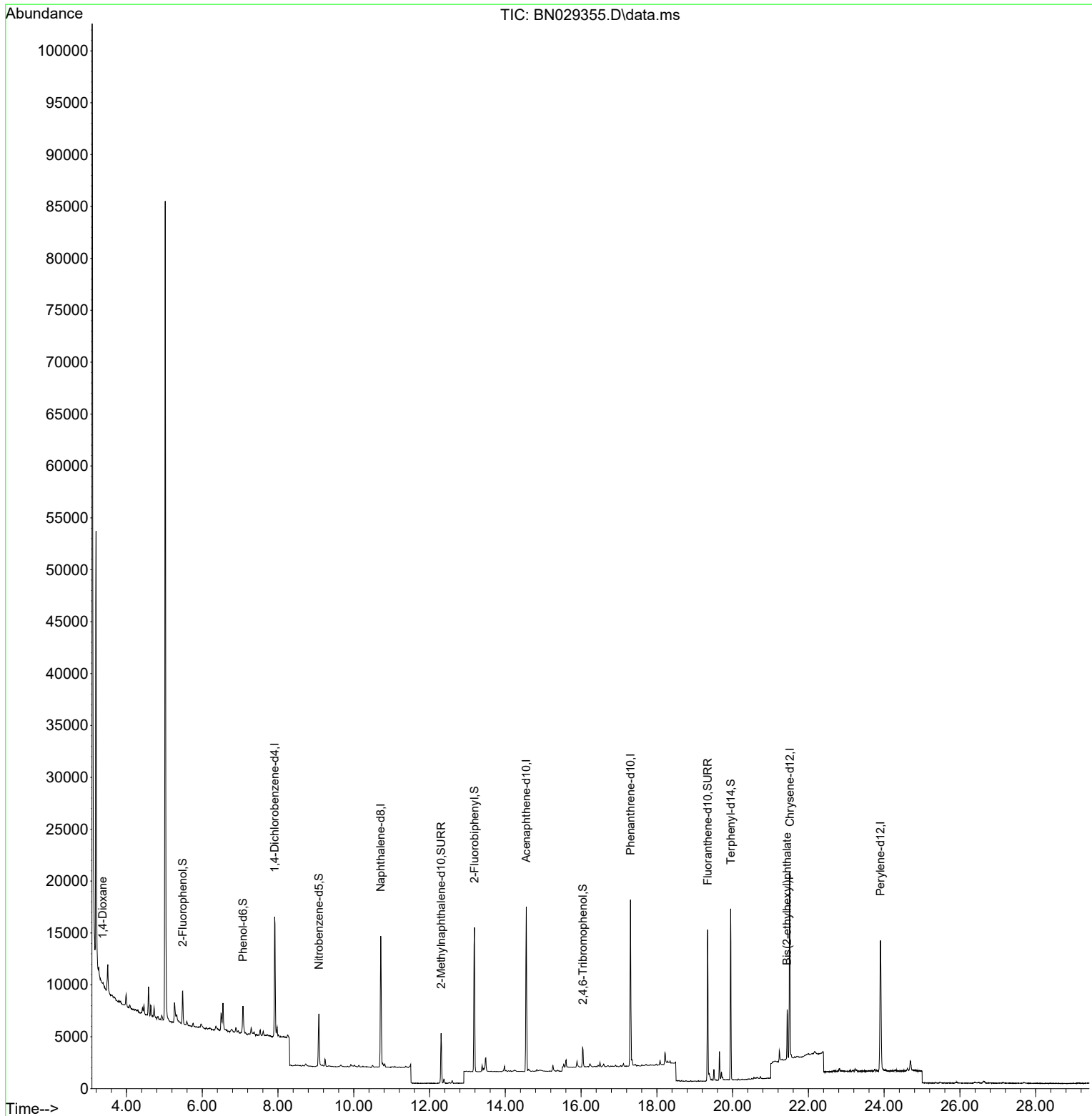
Compound	R.T.	QIon	Response	Conc	Units	Dev(Min)	
Internal Standards							
1) 1,4-Dichlorobenzene-d4	7.912	152	5543	0.400	ng	0.00	
7) Naphthalene-d8	10.712	136	16202	0.400	ng	0.00	
13) Acenaphthene-d10	14.554	164	8621	0.400	ng	0.00	
19) Phenanthrene-d10	17.305	188	19936	0.400	ng	0.00	
29) Chrysene-d12	21.510	240	17451	0.400	ng	0.00	
35) Perylene-d12	23.905	264	17878	0.400	ng	0.00	
System Monitoring Compounds							
4) 2-Fluorophenol	5.486	112	2538	0.172	ng	0.00	
5) Phenol-d6	7.074	99	2322	0.118	ng	0.00	
8) Nitrobenzene-d5	9.078	82	4067	0.237	ng	0.00	
11) 2-Methylnaphthalene-d10	12.306	152	6432	0.240	ng	0.00	
14) 2,4,6-Tribromophenol	16.052	330	1124	0.250	ng	0.00	
15) 2-Fluorobiphenyl	13.185	172	12339	0.297	ng	0.00	
27) Fluoranthene-d10	19.341	212	15684	0.265	ng	0.00	
31) Terphenyl-d14	19.949	244	14798	0.331	ng	0.00	
Target Compounds							
2) 1,4-Dioxane	3.369	88	171	0.024	ng	#	22
34) Bis(2-ethylhexyl)phtha...	21.438	149	4916	0.123	ng		98

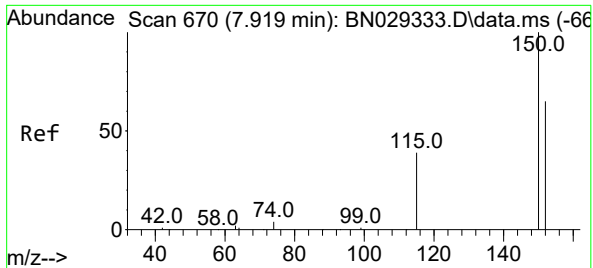
(#) = qualifier out of range (m) = manual integration (+) = signals summed

Data Path : Z:\svoasrv\HPCHEM1\BNA_N\Data\BN012324\
 Data File : BN029355.D
 Acq On : 23 Jan 2024 19:48
 Operator : MA/JU
 Sample : P1215-02
 Misc :
 ALS Vial : 16 Sample Multiplier: 1

Instrument :
 BNA_N
ClientSampleId :
 BP-VPB-195-GW-400-402

Quant Time: Jan 24 01:09:50 2024
 Quant Method : Z:\svoasrv\HPCHEM1\BNA_N\Methods\8270-SIM-BN012224.M
 Quant Title : ASP BNA STANDARDS FOR 5 POINT CALIBRATION
 QLast Update : Tue Jan 23 02:16:14 2024
 Response via : Initial Calibration



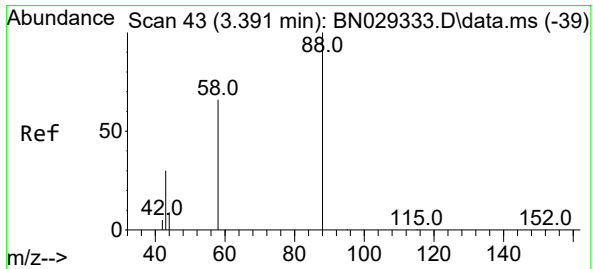
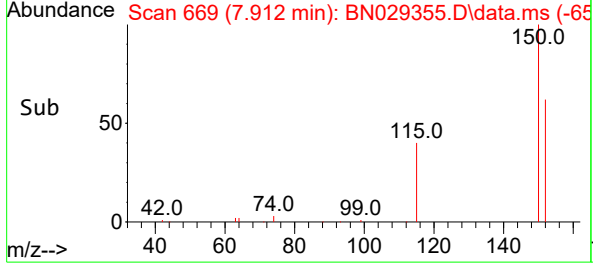
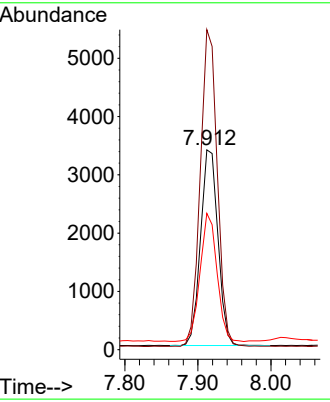
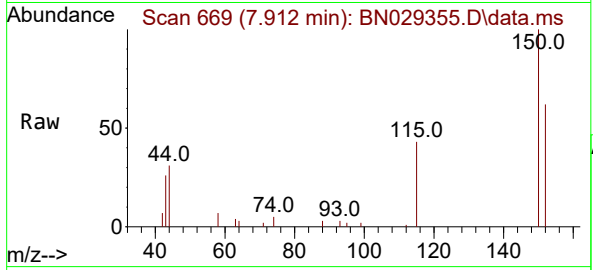


#1
 1,4-Dichlorobenzene-d4
 Concen: 0.400 ng
 RT: 7.912 min Scan# 60
 Delta R.T. -0.007 min
 Lab File: BN029355.D
 Acq: 23 Jan 2024 19:48

Instrument : BNA_N
 ClientSampleId : BP-VPB-195-GW-400-402

Tgt Ion: 152 Resp: 5543

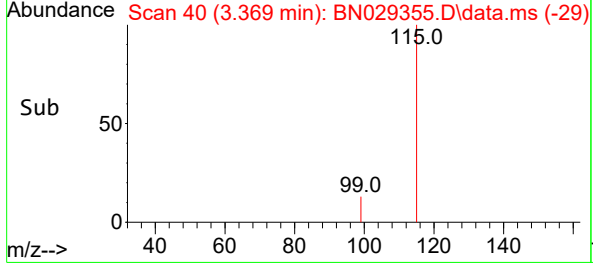
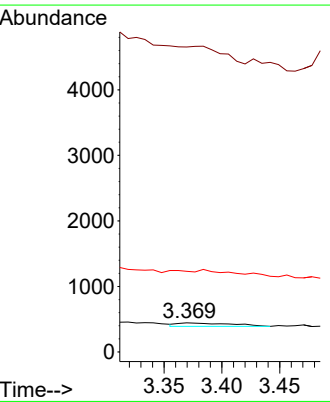
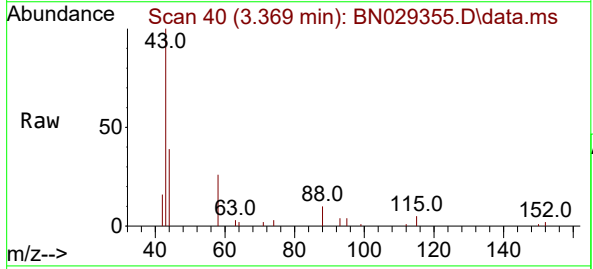
Ion	Ratio	Lower	Upper
152	100		
150	160.1	121.1	181.7
115	68.2	49.8	74.6

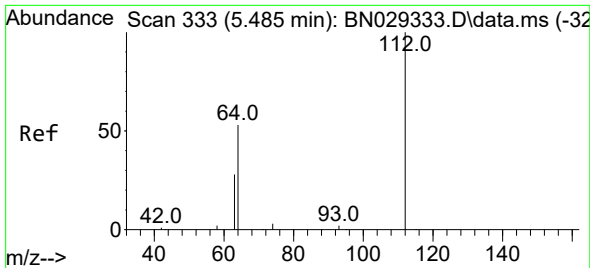


#2
 1,4-Dioxane
 Concen: 0.024 ng
 RT: 3.369 min Scan# 40
 Delta R.T. -0.021 min
 Lab File: BN029355.D
 Acq: 23 Jan 2024 19:48

Tgt Ion: 88 Resp: 171

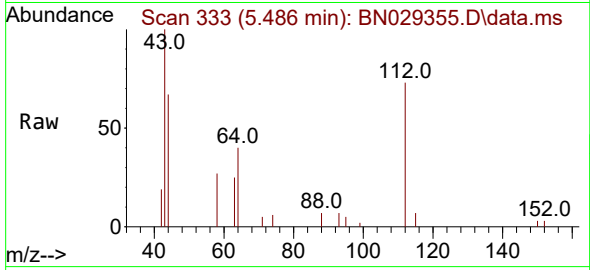
Ion	Ratio	Lower	Upper
88	100		
43	0.0	29.2	43.8#
58	0.0	57.8	86.8#





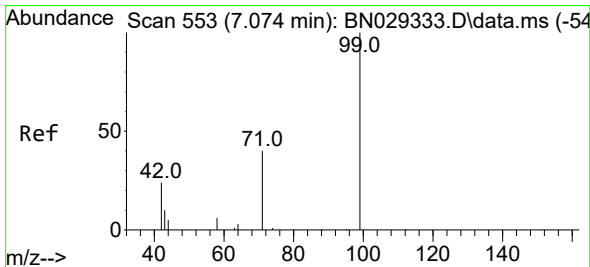
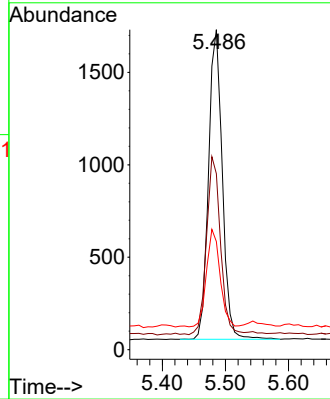
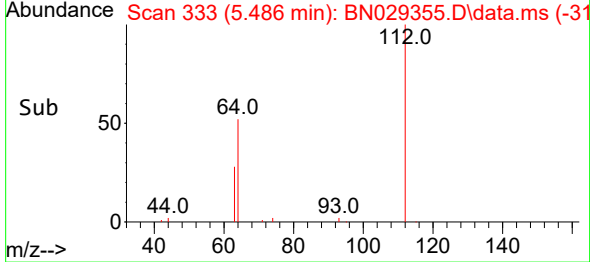
#4
 2-Fluorophenol
 Concen: 0.172 ng
 RT: 5.486 min Scan# 311
 Delta R.T. 0.000 min
 Lab File: BN029355.D
 Acq: 23 Jan 2024 19:48

Instrument :
 BNA_N
 ClientSampleId :
 BP-VPB-195-GW-400-402

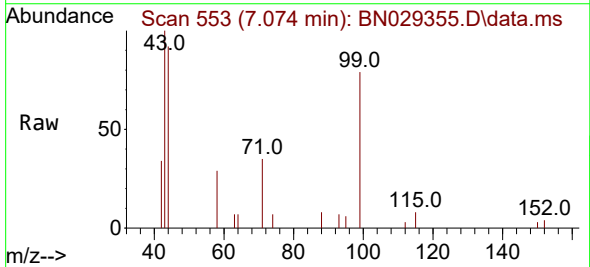


Tgt Ion: 112 Resp: 2538

Ion	Ratio	Lower	Upper
112	100		
64	59.1	47.6	71.4
63	30.3	27.0	40.6

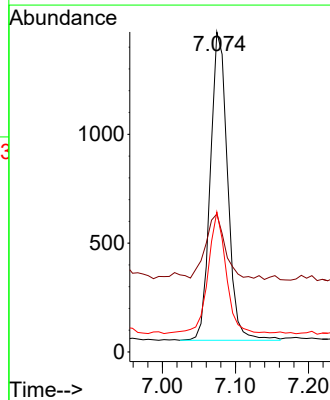
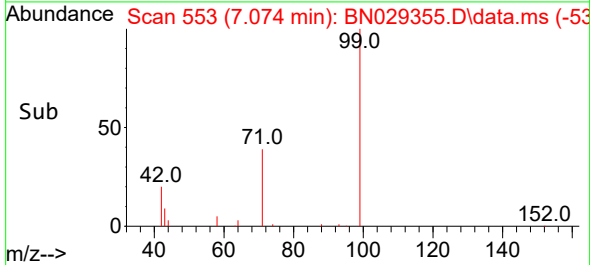


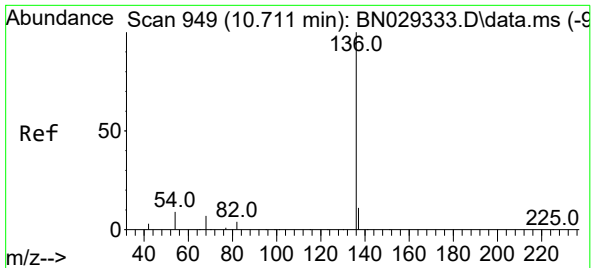
#5
 Phenol-d6
 Concen: 0.118 ng
 RT: 7.074 min Scan# 553
 Delta R.T. 0.000 min
 Lab File: BN029355.D
 Acq: 23 Jan 2024 19:48



Tgt Ion: 99 Resp: 2322

Ion	Ratio	Lower	Upper
99	100		
42	24.1	19.3	28.9
71	41.5	31.0	46.6



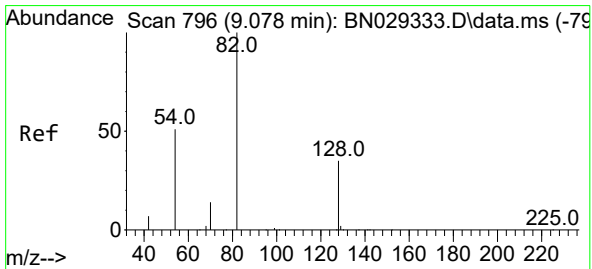
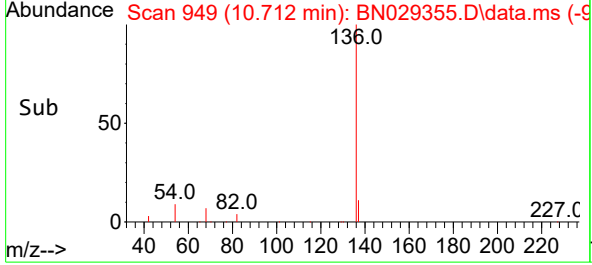
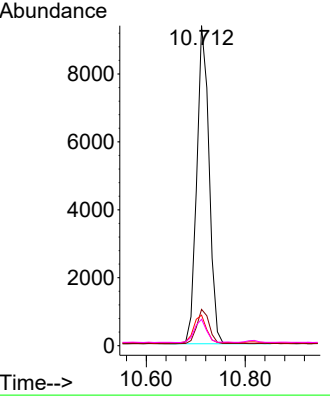
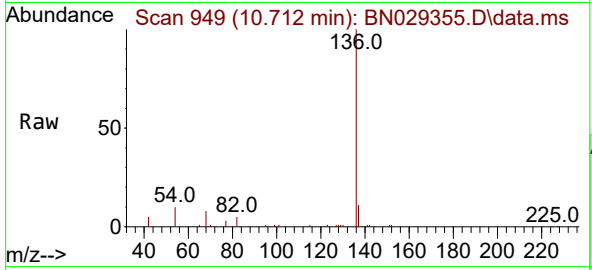


#7
 Naphthalene-d8
 Concen: 0.400 ng
 RT: 10.712 min Scan# 949
 Delta R.T. 0.000 min
 Lab File: BN029355.D
 Acq: 23 Jan 2024 19:48

Instrument : BNA_N
 ClientSampleId : BP-VPB-195-GW-400-402

Tgt Ion: 136 Resp: 16202

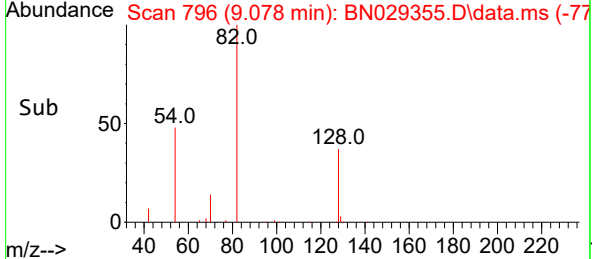
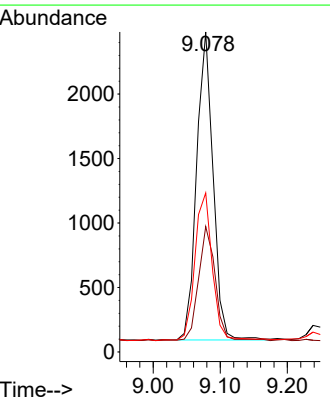
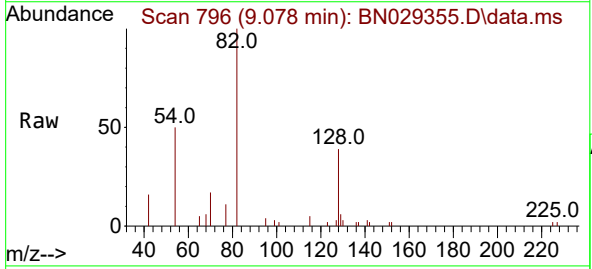
Ion	Ratio	Lower	Upper
136	100		
137	11.3	9.4	14.0
54	9.5	7.9	11.9
68	8.3	6.3	9.5

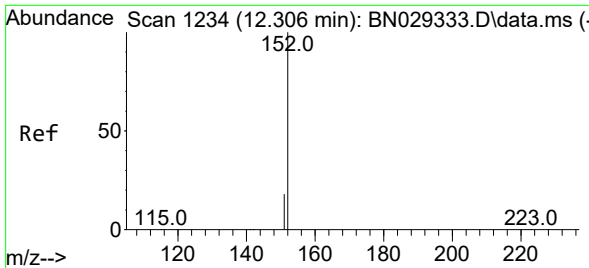


#8
 Nitrobenzene-d5
 Concen: 0.237 ng
 RT: 9.078 min Scan# 796
 Delta R.T. 0.000 min
 Lab File: BN029355.D
 Acq: 23 Jan 2024 19:48

Tgt Ion: 82 Resp: 4067

Ion	Ratio	Lower	Upper
82	100		
128	39.2	29.8	44.6
54	49.7	42.5	63.7

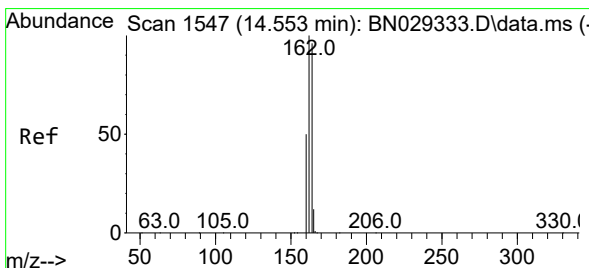
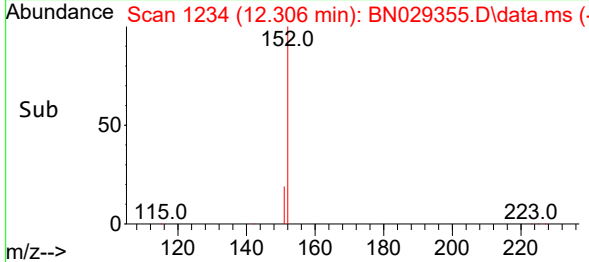
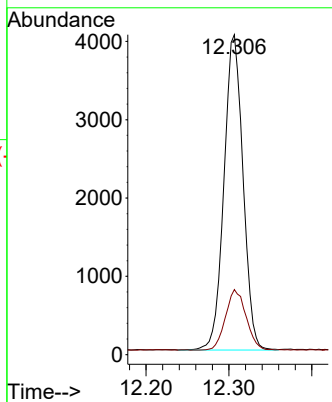
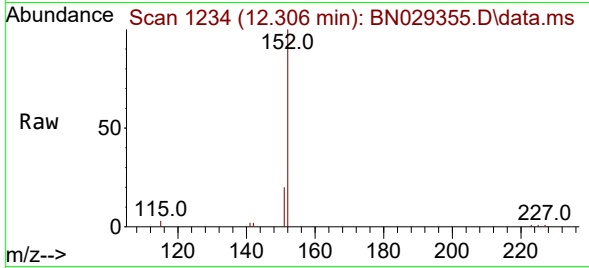




#11
 2-Methylnaphthalene-d10
 Concen: 0.240 ng
 RT: 12.306 min Scan# 11
 Delta R.T. 0.000 min
 Lab File: BN029355.D
 Acq: 23 Jan 2024 19:48

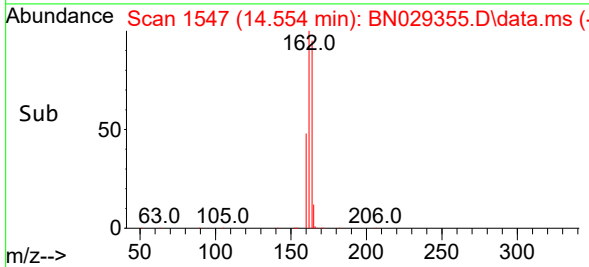
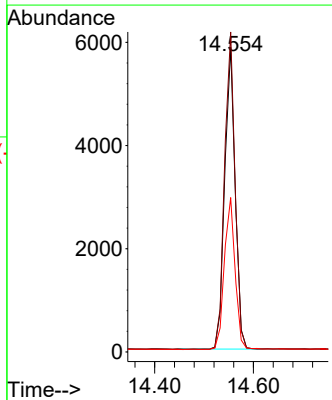
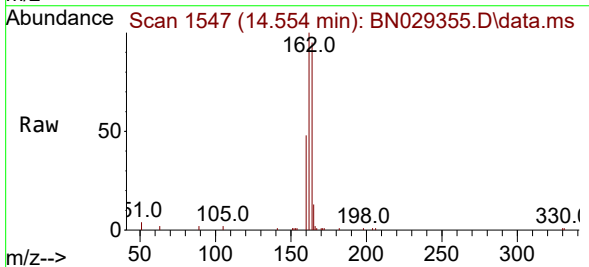
Instrument :
 BNA_N
 ClientSampleId :
 BP-VPB-195-GW-400-402

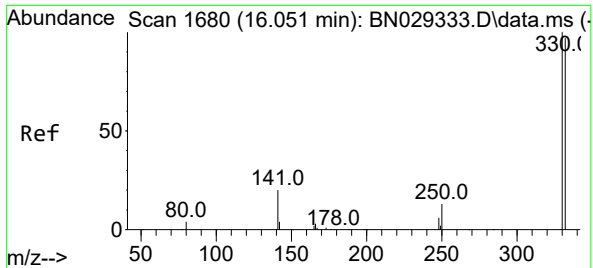
Tgt Ion:152 Resp: 6432
 Ion Ratio Lower Upper
 152 100
 151 20.8 16.9 25.3



#13
 Acenaphthene-d10
 Concen: 0.400 ng
 RT: 14.554 min Scan# 1547
 Delta R.T. 0.000 min
 Lab File: BN029355.D
 Acq: 23 Jan 2024 19:48

Tgt Ion:164 Resp: 8621
 Ion Ratio Lower Upper
 164 100
 162 105.0 83.5 125.3
 160 50.7 42.1 63.1



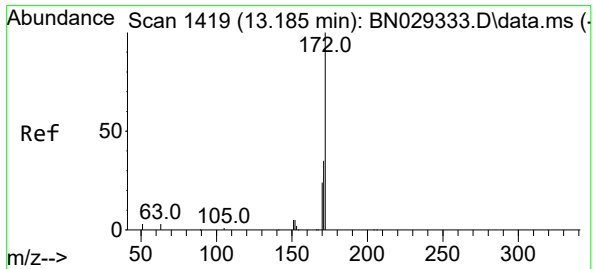
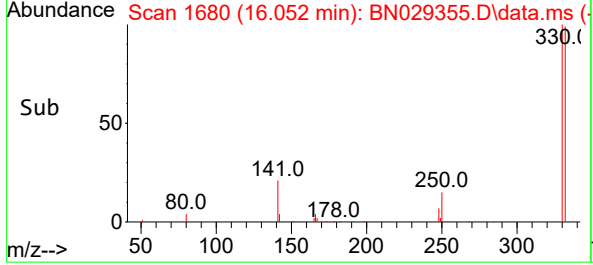
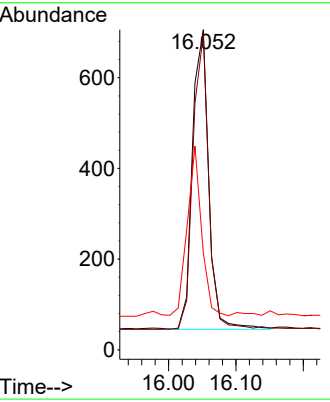
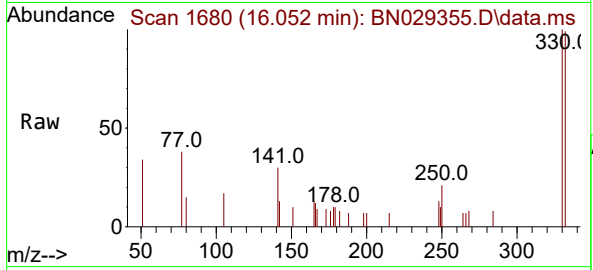


#14
 2,4,6-Tribromophenol
 Concen: 0.250 ng
 RT: 16.052 min Scan# 11
 Delta R.T. 0.000 min
 Lab File: BN029355.D
 Acq: 23 Jan 2024 19:48

Instrument : BNA_N
 ClientSampleId : BP-VPB-195-GW-400-402

Tgt Ion: 330 Resp: 1124

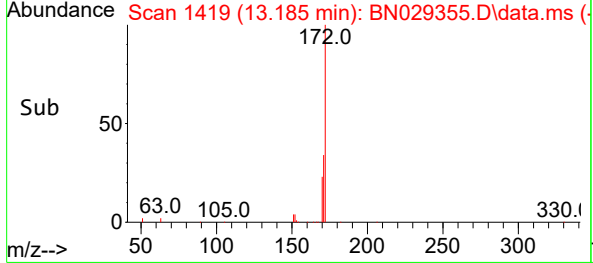
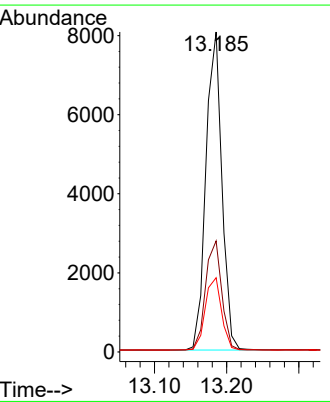
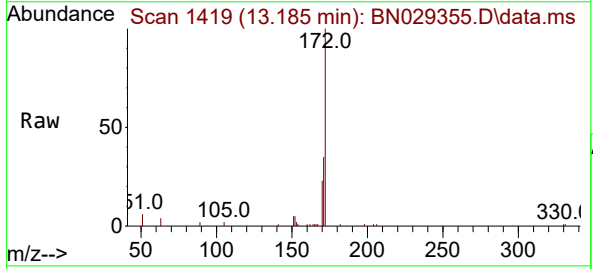
Ion	Ratio	Lower	Upper
330	100		
332	94.8	77.3	115.9
141	49.2	37.2	55.8

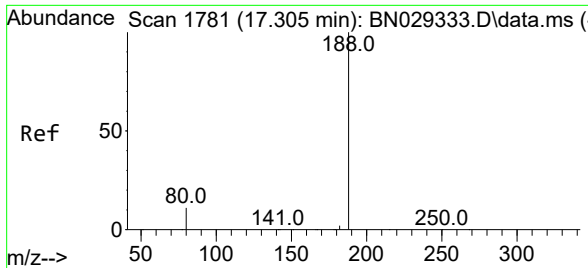


#15
 2-Fluorobiphenyl
 Concen: 0.297 ng
 RT: 13.185 min Scan# 1419
 Delta R.T. 0.000 min
 Lab File: BN029355.D
 Acq: 23 Jan 2024 19:48

Tgt Ion: 172 Resp: 12339

Ion	Ratio	Lower	Upper
172	100		
171	34.7	28.2	42.2
170	23.2	19.3	28.9

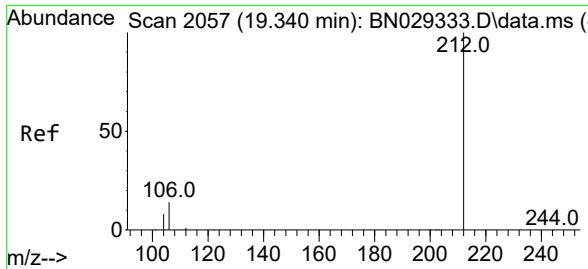
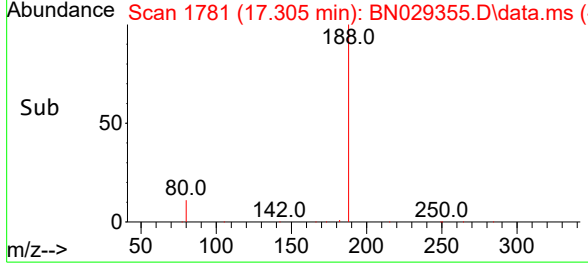
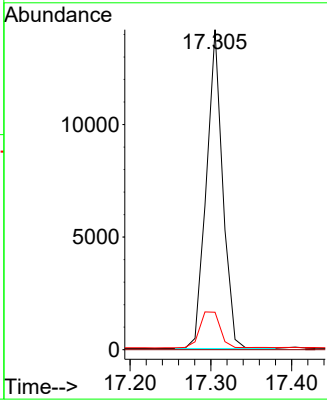
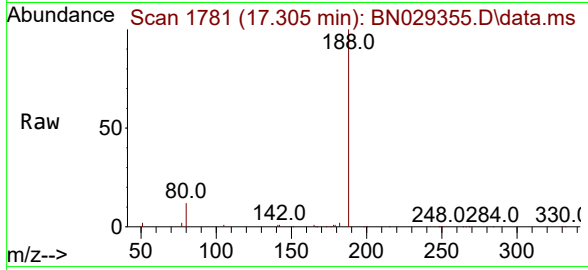




#19
 Phenanthrene-d10
 Concen: 0.400 ng
 RT: 17.305 min Scan# 11
 Delta R.T. 0.000 min
 Lab File: BN029355.D
 Acq: 23 Jan 2024 19:48

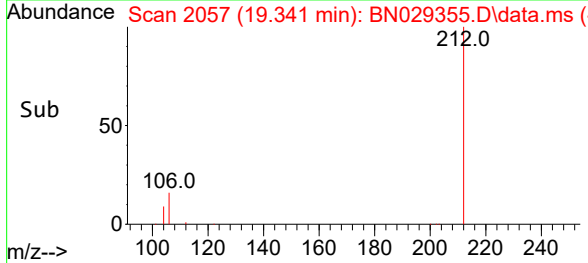
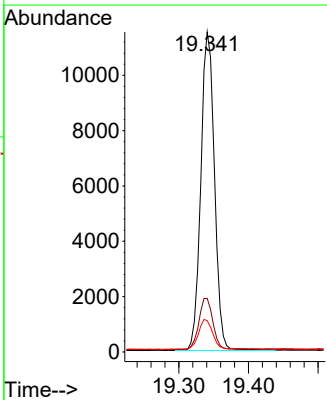
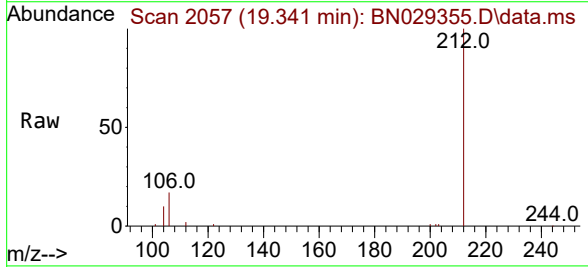
Instrument :
 BNA_N
ClientSampleId :
 BP-VPB-195-GW-400-402

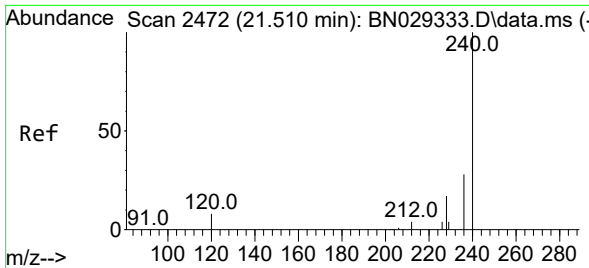
Tgt Ion	Resp	Lower	Upper
188	19936		
188	100		
94	0.0	0.0	0.0
80	11.7	9.4	14.2



#27
 Fluoranthene-d10
 Concen: 0.265 ng
 RT: 19.341 min Scan# 2057
 Delta R.T. 0.000 min
 Lab File: BN029355.D
 Acq: 23 Jan 2024 19:48

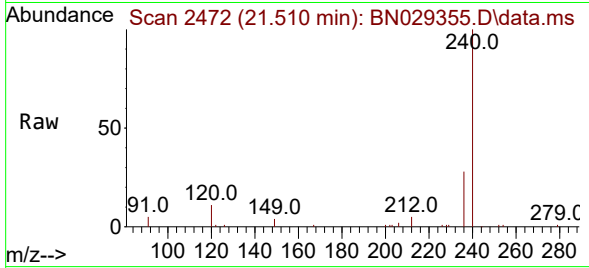
Tgt Ion	Resp	Lower	Upper
212	15684		
212	100		
106	16.4	11.4	17.0
104	9.8	6.8	10.2



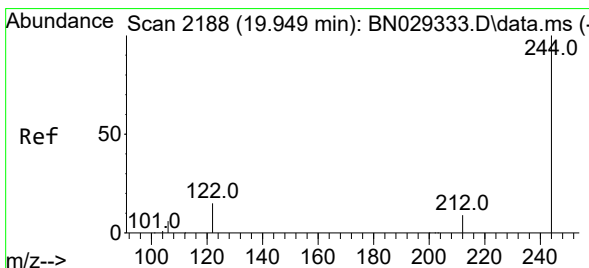
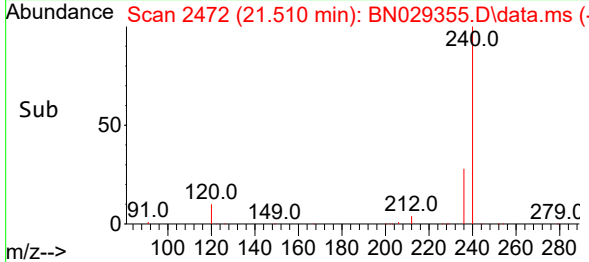
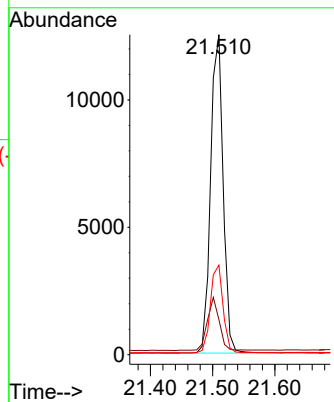


#29
 Chrysene-d12
 Concen: 0.400 ng
 RT: 21.510 min Scan# 2472
 Delta R.T. 0.000 min
 Lab File: BN029355.D
 Acq: 23 Jan 2024 19:48

Instrument :
 BNA_N
 ClientSampleId :
 BP-VPB-195-GW-400-402

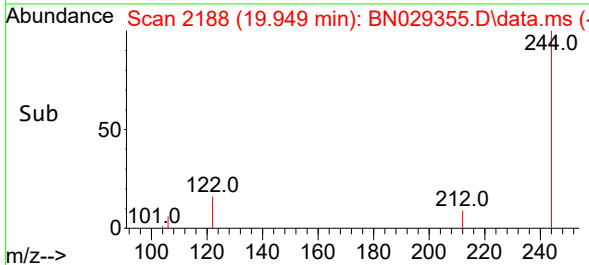
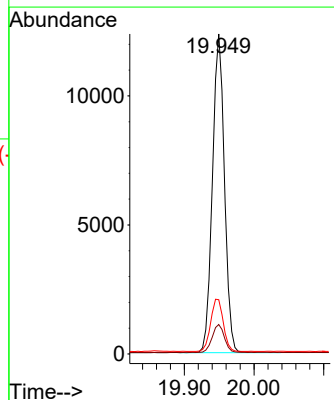
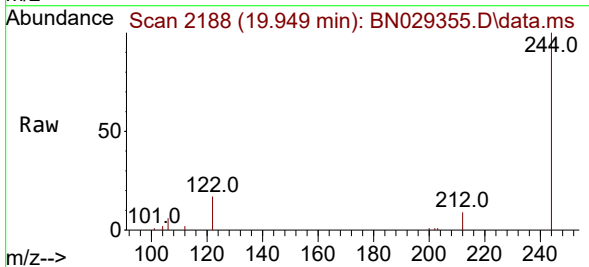


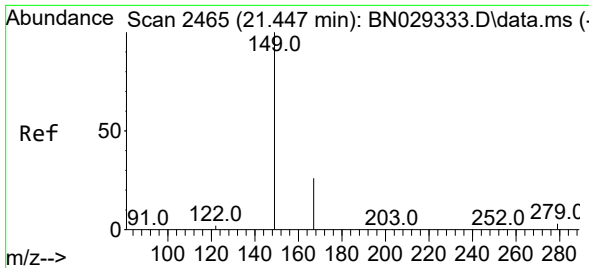
Tgt Ion:240 Resp: 17451
 Ion Ratio Lower Upper
 240 100
 120 11.0 7.8 11.6
 236 28.0 23.0 34.4



#31
 Terphenyl-d14
 Concen: 0.331 ng
 RT: 19.949 min Scan# 2188
 Delta R.T. 0.000 min
 Lab File: BN029355.D
 Acq: 23 Jan 2024 19:48

Tgt Ion:244 Resp: 14798
 Ion Ratio Lower Upper
 244 100
 212 9.2 7.6 11.4
 122 16.9 12.8 19.2

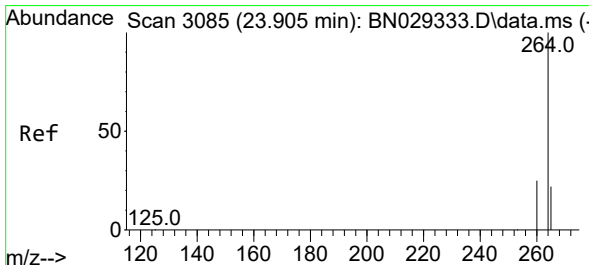
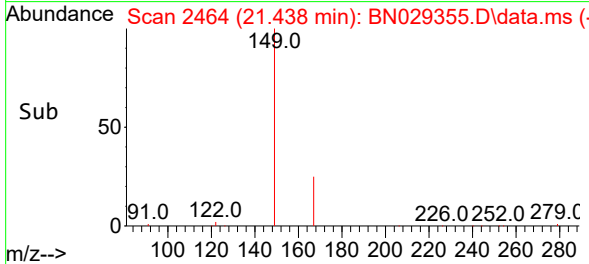
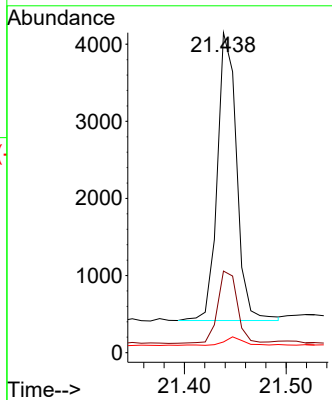
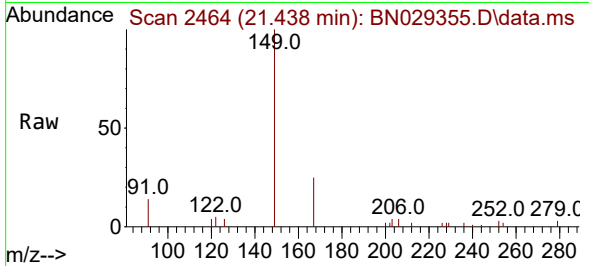




#34
 Bis(2-ethylhexyl)phthalate
 Concen: 0.123 ng
 RT: 21.438 min Scan# 24
 Delta R.T. -0.008 min
 Lab File: BN029355.D
 Acq: 23 Jan 2024 19:48

Instrument :
 BNA_N
 ClientSampleId :
 BP-VPB-195-GW-400-402

Tgt Ion	Resp	Lower	Upper
149	4916		
167	25.7	19.9	29.9
279	3.2	2.2	3.4



#35
 Perylene-d12
 Concen: 0.400 ng
 RT: 23.905 min Scan# 3085
 Delta R.T. 0.000 min
 Lab File: BN029355.D
 Acq: 23 Jan 2024 19:48

Tgt Ion	Resp	Lower	Upper
264	17878		
260	25.6	20.6	31.0
265	29.0	24.8	37.2

