

Data Path : Z:\SVOASRV\HPCHEM1\BNA N\DATA\BN012420\
 Data File : BN009436.D
 Acq On : 24 Jan 2020 10:40
 Operator : CG/JU
 Sample : PB126283BS
 Misc :
 ALS Vial : 3 Sample Multiplier: 1

Instrument :
 BNA_N
 ClientSampled :

Quant Time: Jan 24 12:17:51 2020
 Quant Method : Z:\SVOASRV\HPCHEM1\BNA N\METHODS\8270-SIM-BN011420.M
 Quant Title : ASP BNA STANDARDS FOR 5 POINT CALIBRATION
 QLast Update : Tue Jan 14 09:33:55 2020
 Response via : Initial Calibration

Internal Standards	R.T.	QIon	Response	Conc	Units	Dev(Min)
1) 1,4-Dichlorobenzene-d4	7.47	152	1810	0.40	ng	0.00
7) Naphthalene-d8	10.22	136	6658	0.40	ng	-0.01
13) Acenaphthene-d10	14.09	164	4377	0.40	ng	-0.02
19) Phenanthrene-d10	16.85	188	9308	0.40	ng	-0.02
27) Chrysene-d12	21.06	240	8293	0.40	ng	-0.01
34) Perylene-d12	23.18	264	8385	0.40	ng	-0.02

System Monitoring Compounds

4) 2-Fluorophenol	5.12	112	1654	0.40	ng	0.00
5) Phenol-d6	6.67	99	1991	0.41	ng	0.00
8) Nitrobenzene-d5	8.62	82	2113	0.40	ng	-0.01
11) 2-Methylnaphthalene-d10	11.82	152	5078	0.39	ng	-0.01
14) 2,4,6-Tribromophenol	15.61	330	653	0.39	ng	-0.02
15) 2-Fluorobiphenyl	12.72	172	6737	0.41	ng	0.00
25) Fluoranthene-d10	18.89	212	11660	0.37	ng	-0.01
29) Terphenyl-d14	19.51	244	7955	0.40	ng	-0.01

Target Compounds

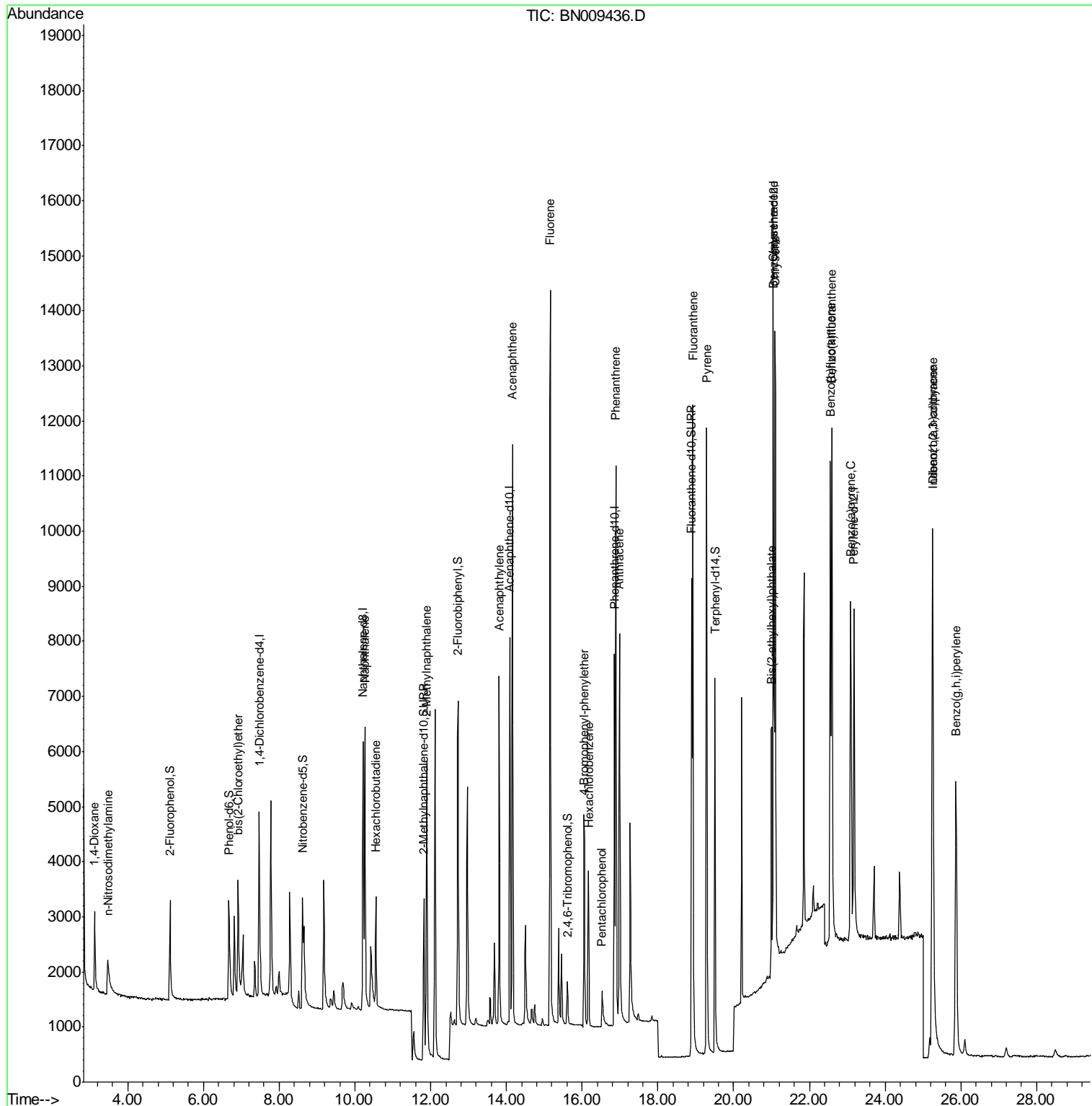
Target Compounds	R.T.	QIon	Response	Conc	Units	Qvalue
2) 1,4-Dioxane	3.13	88	703	0.372	ng	98
3) n-Nitrosodimethylamine	3.47	42	1053	0.361	ng	# 94
6) bis(2-Chloroethyl)ether	6.92	93	1870	0.377	ng	99
9) Naphthalene	10.27	128	7182	0.399	ng	98
10) Hexachlorobutadiene	10.56	225	1541	0.390	ng	# 99
12) 2-Methylnaphthalene	11.89	142	4959	0.395	ng	99
16) Acenaphthylene	13.81	152	7159	0.379	ng	100
17) Acenaphthene	14.16	154	5158	0.389	ng	100
18) Fluorene	15.16	166	6516	0.377	ng	99
20) 4-Bromophenyl-phenylether	16.06	248	2156	0.385	ng	# 88
21) Hexachlorobenzene	16.17	284	2373	0.398	ng	97
22) Pentachlorophenol	16.53	266	572	0.418	ng	95
23) Phenanthrene	16.89	178	10678	0.382	ng	100
24) Anthracene	16.99	178	8879	0.378	ng	100
26) Fluoranthene	18.92	202	12128	0.370	ng	100
28) Pyrene	19.29	202	12223	0.389	ng	100
30) Benzo(a)anthracene	21.05	228	10219	0.375	ng	98
31) Chrysene	21.09	228	12083	0.388	ng	98
32) Bis(2-ethylhexyl)phthalate	20.99	149	4933	0.409	ng	98
33) Indeno(1,2,3-cd)pyrene	25.24	276	12701	0.392	ng	99
35) Benzo(b)fluoranthene	22.55	252	11388	0.369	ng	97
36) Benzo(k)fluoranthene	22.59	252	12649	0.372	ng	98
37) Benzo(a)pyrene	23.09	252	10284	0.379	ng	96
38) Dibenzo(a,h)anthracene	25.25	278	10156	0.372	ng	96
39) Benzo(g,h,i)perylene	25.87	276	10725	0.357	ng	99

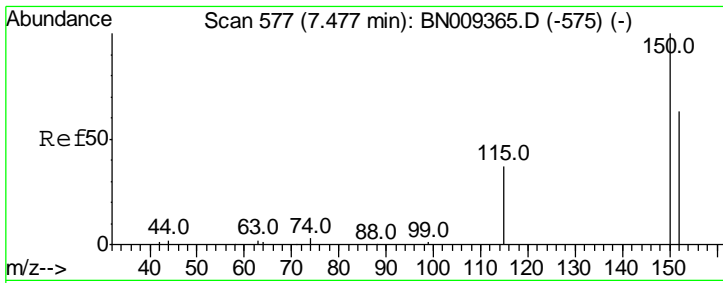
(#) = qualifier out of range (m) = manual integration (+) = signals summed

Data Path : Z:\SVOASRV\HPCHEM1\BNA N\DATA\BN012420\
 Data File : BN009436.D
 Acq On : 24 Jan 2020 10:40
 Operator : CG/JU
 Sample : PB126283BS
 Misc :
 ALS Vial : 3 Sample Multiplier: 1

Instrument :
 BNA_N
 Client Sampled :

Quant Time: Jan 24 12:17:51 2020
 Quant Method : Z:\SVOASRV\HPCHEM1\BNA N\METHODS\8270-SIM-BN011420.M
 Quant Title : ASP BNA STANDARDS FOR 5 POINT CALIBRATION
 QLast Update : Tue Jan 14 09:33:55 2020
 Response via : Initial Calibration

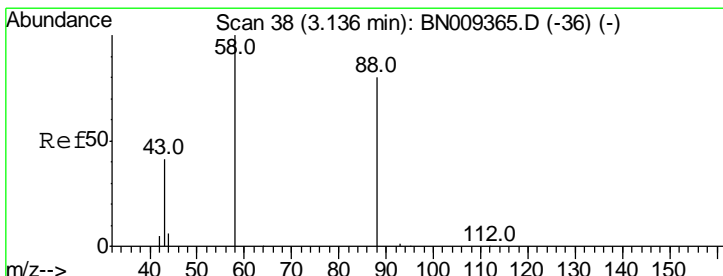
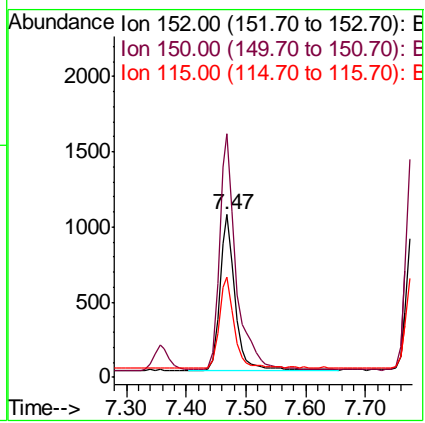
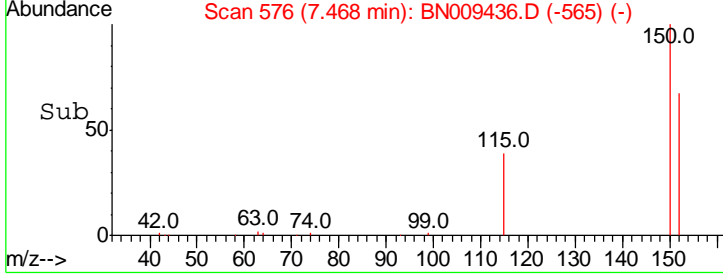
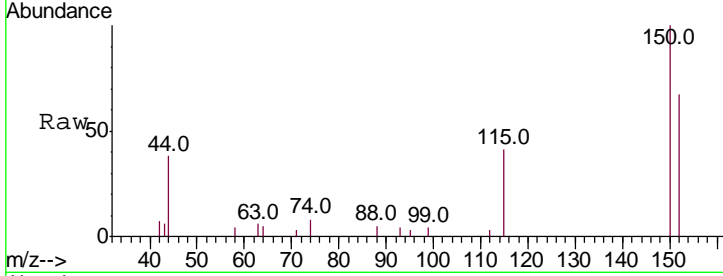




#1
 1,4-Dichlorobenzene-d4
 Concen: 0.400 ng
 RT: 7.47 min Scan# 576
 Delta R.T. -0.01 min
 Lab File: BN009436.D
 Acq: 24 Jan 2020 10:40

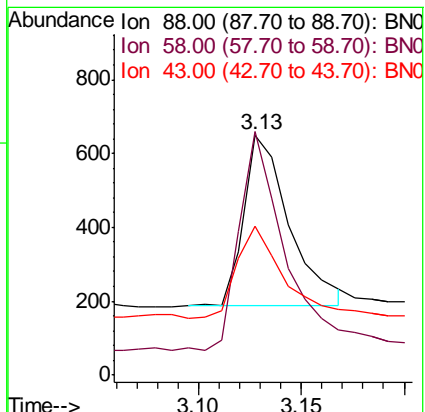
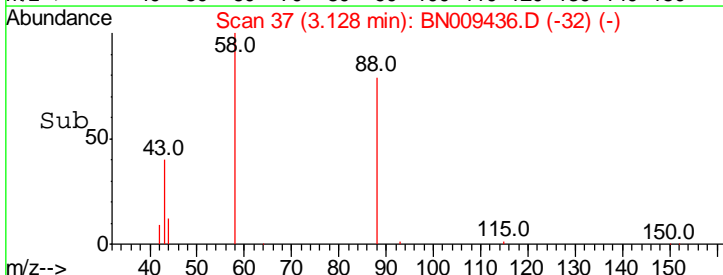
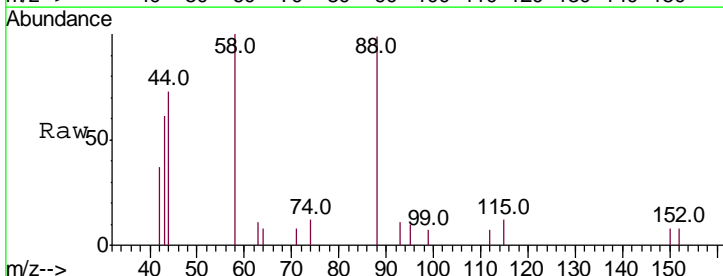
Instrument :
 BNA_N
 ClientSampled :

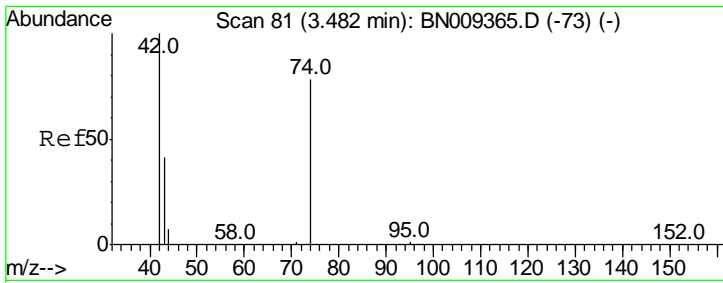
Tgt Ion	Resp	Lower	Upper
152	1810		
152	100		
150	149.8	125.7	188.5
115	61.4	53.3	79.9



#2
 1,4-Dioxane
 Concen: 0.372 ng
 RT: 3.13 min Scan# 37
 Delta R.T. -0.01 min
 Lab File: BN009436.D
 Acq: 24 Jan 2020 10:40

Tgt Ion	Resp	Lower	Upper
88	703		
88	100		
58	127.3	100.2	150.2
43	54.9	43.1	64.7

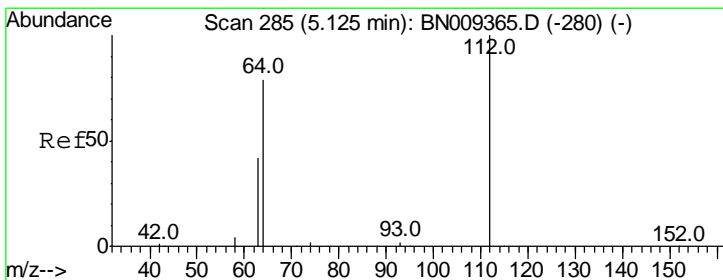
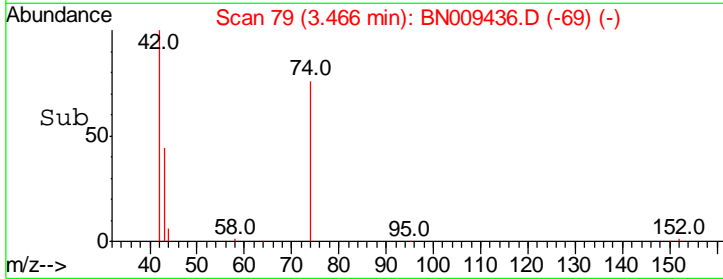
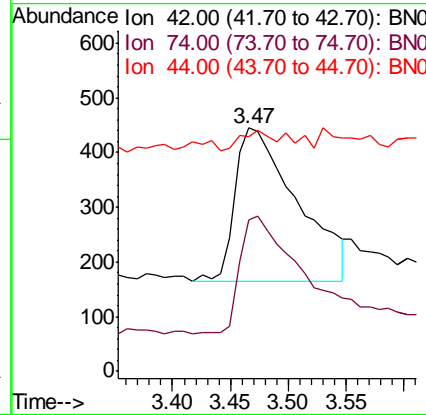
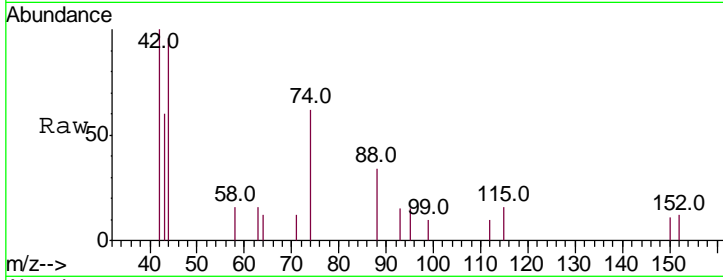




#3
 n-Nitrosodimethylamine
 Concen: 0.361 ng
 RT: 3.47 min Scan# 79
 Delta R.T. -0.02 min
 Lab File: BN009436.D
 Acq: 24 Jan 2020 10:40

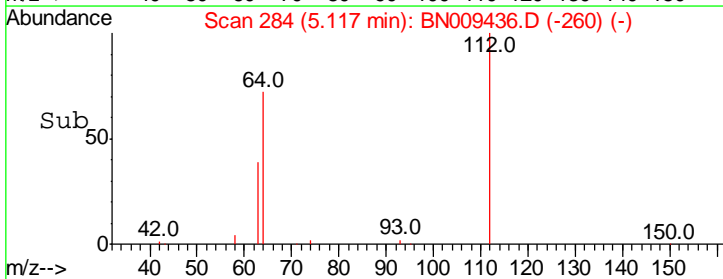
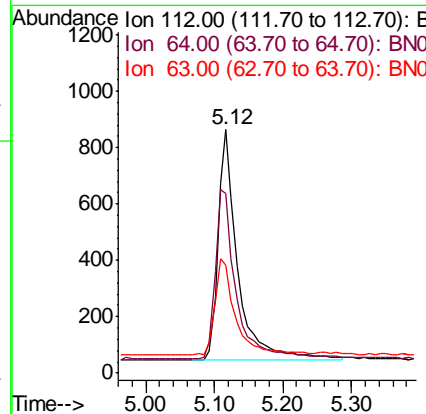
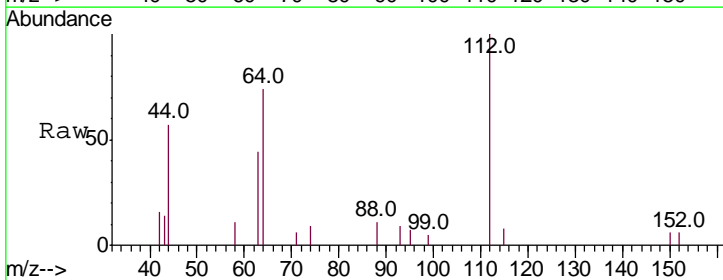
Instrument :
 BNA_N
 ClientSampled :

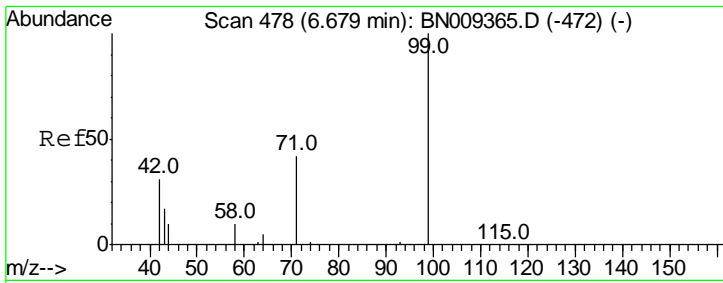
Tgt Ion	Resp	Lower	Upper
42	1053		
74	72.8	55.8	83.8
44	6.1	11.1	16.7#



#4
 2-Fluorophenol
 Concen: 0.397 ng
 RT: 5.12 min Scan# 284
 Delta R.T. -0.01 min
 Lab File: BN009436.D
 Acq: 24 Jan 2020 10:40

Tgt Ion	Resp	Lower	Upper
112	1654		
64	77.6	61.5	92.3
63	43.7	35.0	52.4

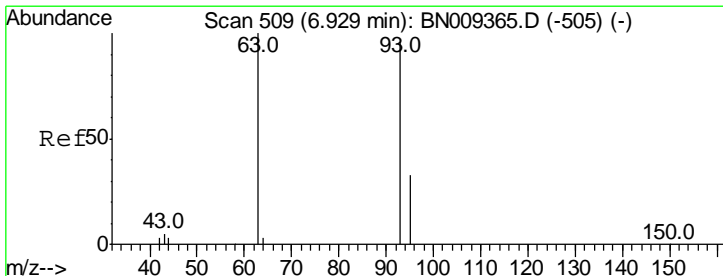
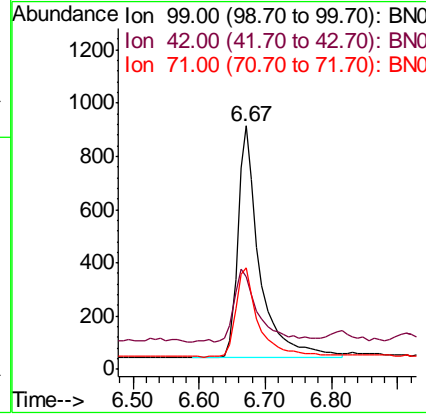
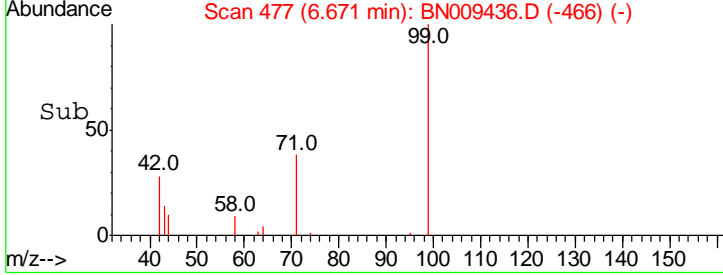
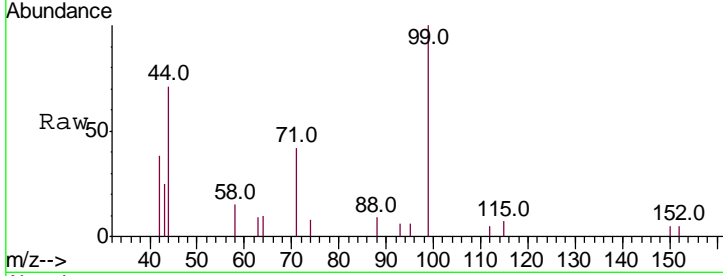




#5
 Phenol-d6
 Concen: 0.413 ng
 RT: 6.67 min Scan# 477
 Delta R.T. -0.01 min
 Lab File: BN009436.D
 Acq: 24 Jan 2020 10:40

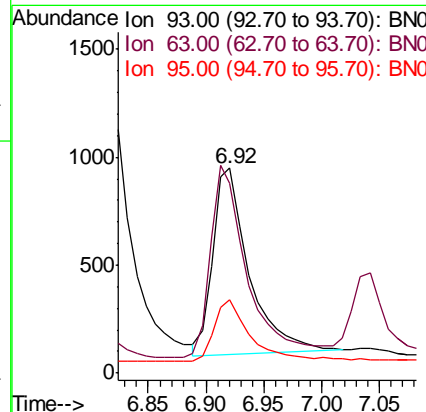
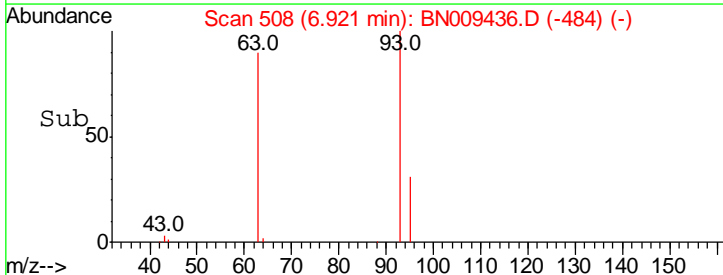
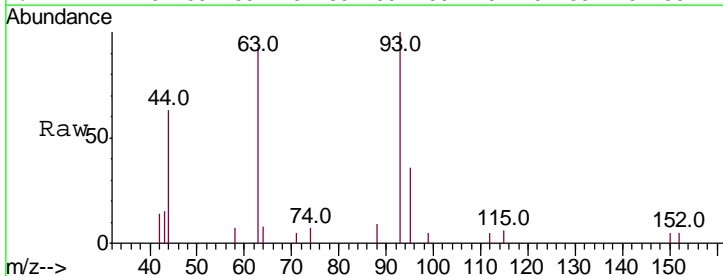
Instrument :
 BNA_N
 ClientSampled :

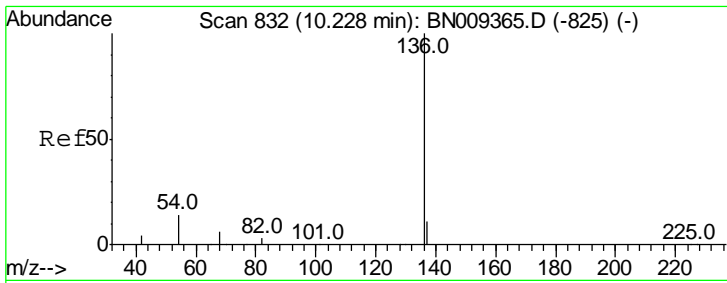
Tgt Ion	Resp	Lower	Upper
99	1991		
99	100		
42	34.4	27.6	41.4
71	41.3	33.0	49.6



#6
 bis(2-Chloroethyl)ether
 Concen: 0.377 ng
 RT: 6.92 min Scan# 508
 Delta R.T. -0.01 min
 Lab File: BN009436.D
 Acq: 24 Jan 2020 10:40

Tgt Ion	Resp	Lower	Upper
93	1870		
93	100		
63	106.5	85.1	127.7
95	36.0	30.2	45.4

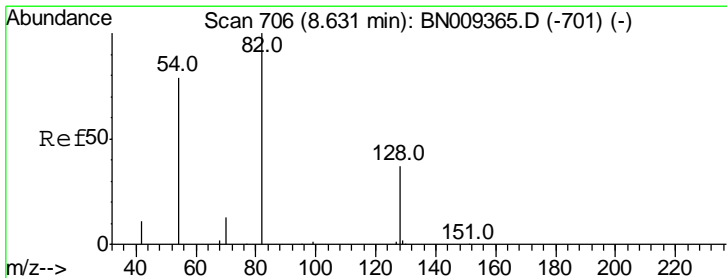
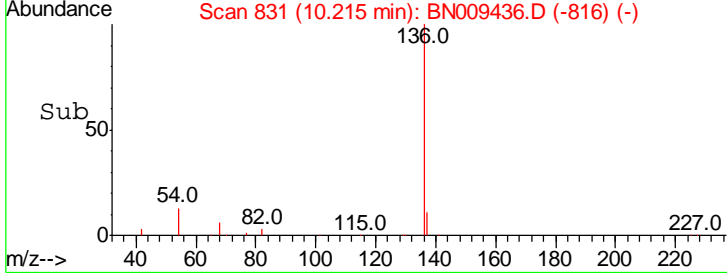
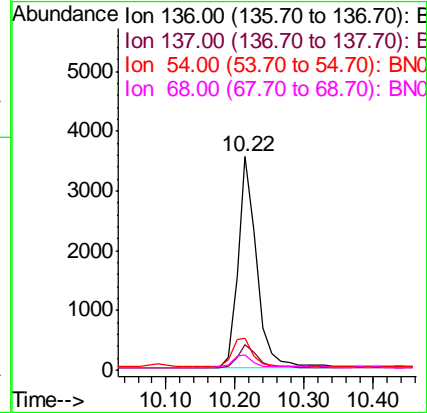
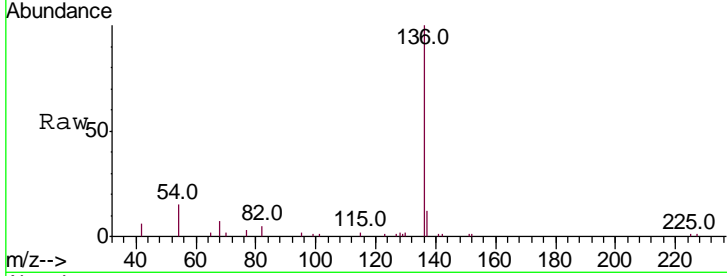




#7
 Naphthalene-d8
 Concen: 0.400 ng
 RT: 10.22 min Scan# 831
 Delta R.T. -0.01 min
 Lab File: BN009436.D
 Acq: 24 Jan 2020 10:40

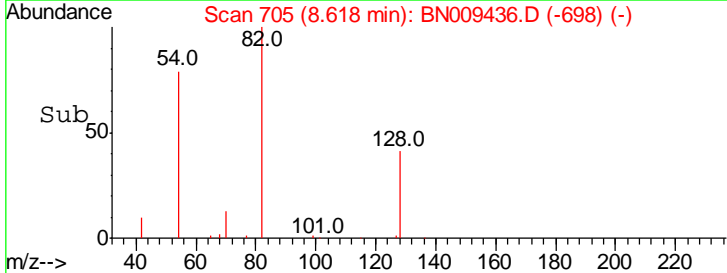
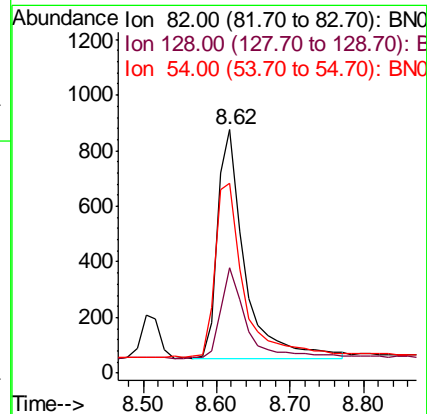
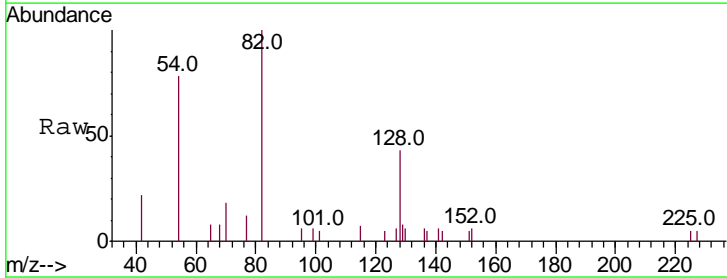
Instrument :
 BNA_N
 ClientSampled :

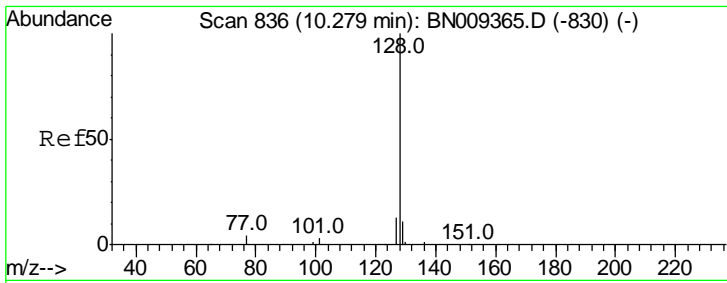
Tgt Ion	Resp	Lower	Upper
136	100		
137	12.0	10.3	15.5
54	14.8	12.6	19.0
68	7.1	6.5	9.7



#8
 Nitrobenzene-d5
 Concen: 0.398 ng
 RT: 8.62 min Scan# 705
 Delta R.T. -0.01 min
 Lab File: BN009436.D
 Acq: 24 Jan 2020 10:40

Tgt Ion	Resp	Lower	Upper
82	100		
128	43.5	34.8	52.2
54	78.0	65.8	98.6

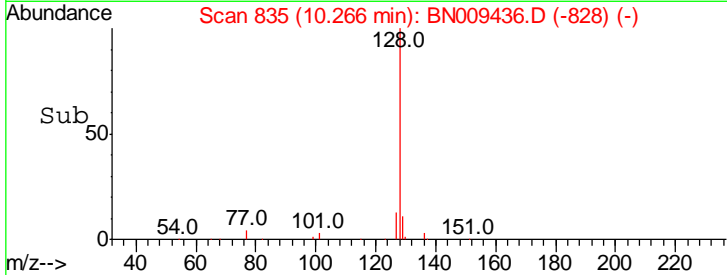
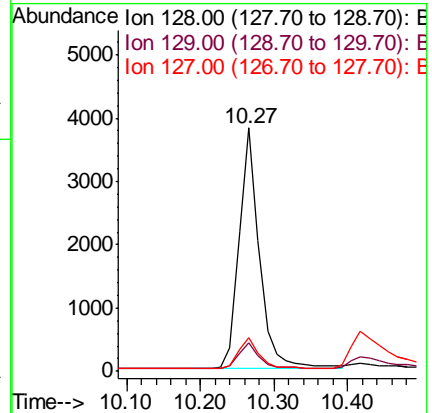
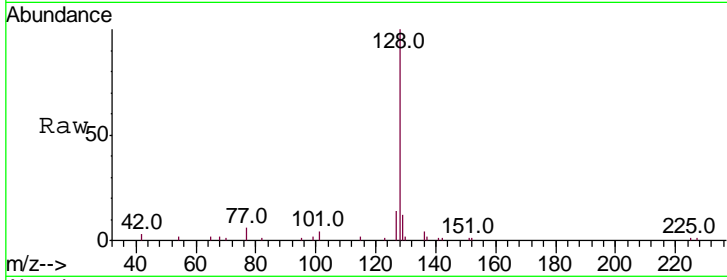




#9
 Naphthalene
 Concen: 0.399 ng
 RT: 10.27 min Scan# 835
 Delta R.T. -0.01 min
 Lab File: BN009436.D
 Acq: 24 Jan 2020 10:40

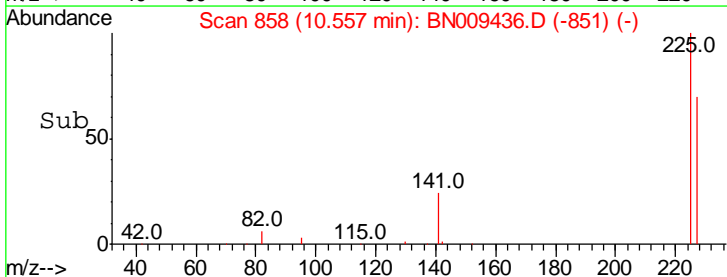
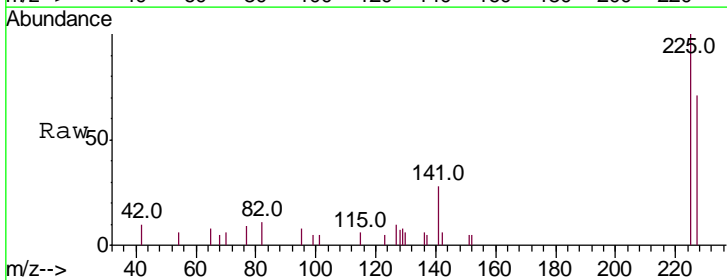
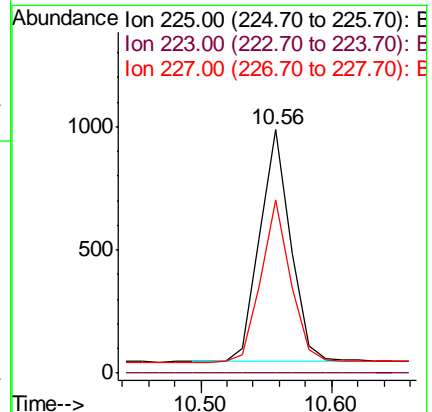
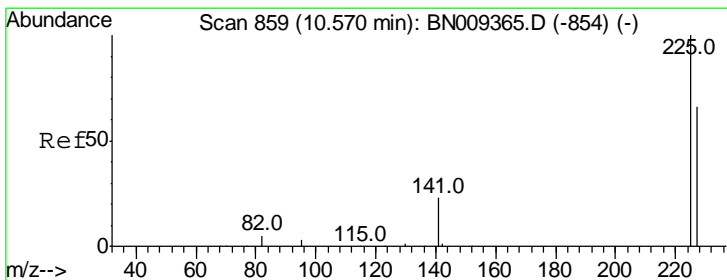
Instrument :
 BNA_N
 ClientSampled :

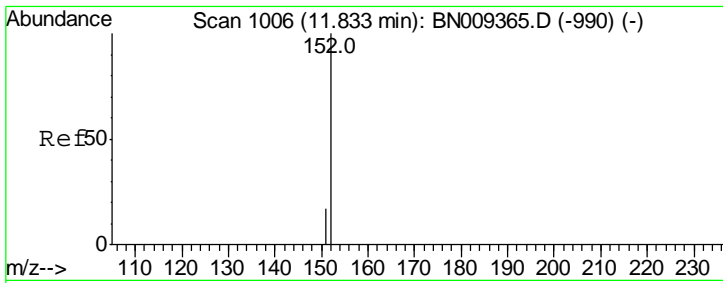
Tgt Ion	Resp	Lower	Upper
128	7182		
129	12.0	10.4	15.6
127	13.8	11.4	17.2



#10
 Hexachlorobutadiene
 Concen: 0.390 ng
 RT: 10.56 min Scan# 858
 Delta R.T. -0.01 min
 Lab File: BN009436.D
 Acq: 24 Jan 2020 10:40

Tgt Ion	Resp	Lower	Upper
225	1541		
223	0.0	0.0	0.0
227	66.4	52.6	78.8

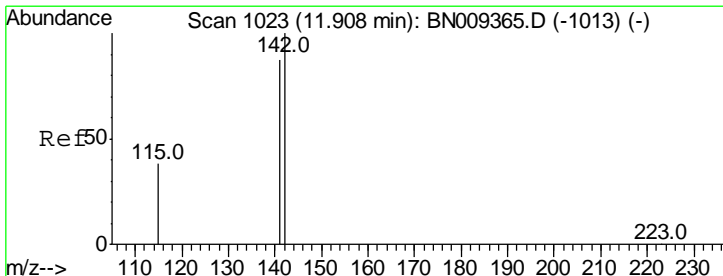
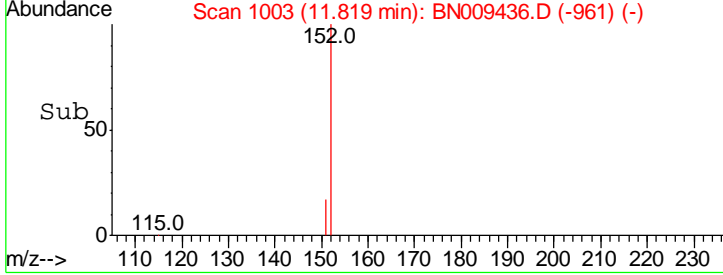
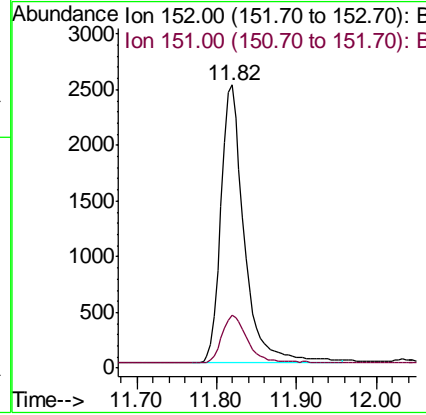
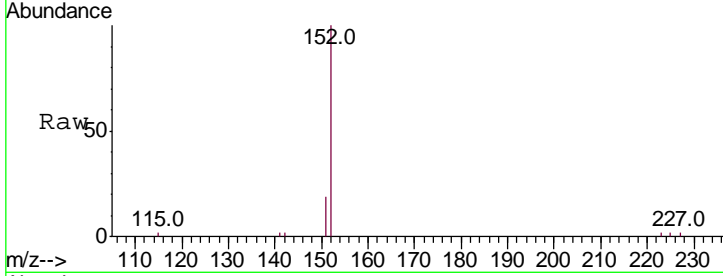




#11
 2-Methylnaphthalene-d10
 Concen: 0.395 ng
 RT: 11.82 min Scan# 1003
 Delta R.T. -0.01 min
 Lab File: BN009436.D
 Acq: 24 Jan 2020 10:40

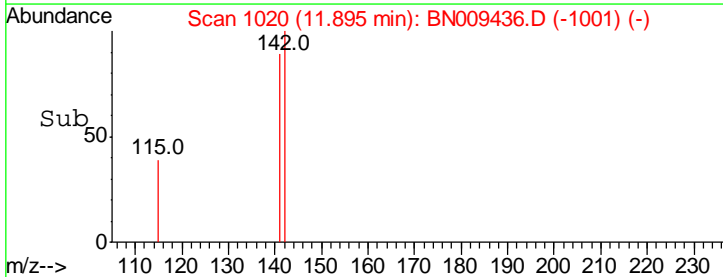
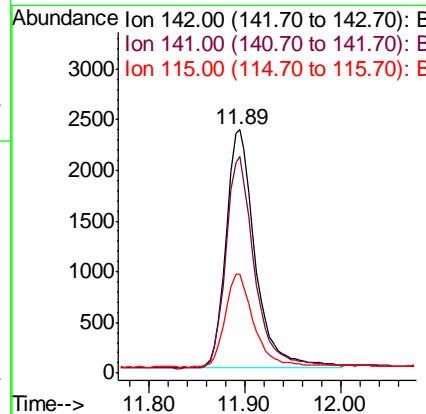
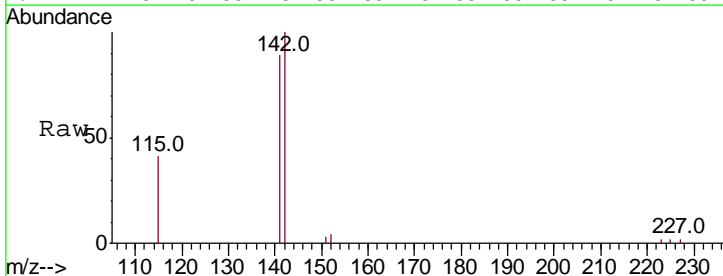
Instrument :
 BNA_N
 ClientSampled :

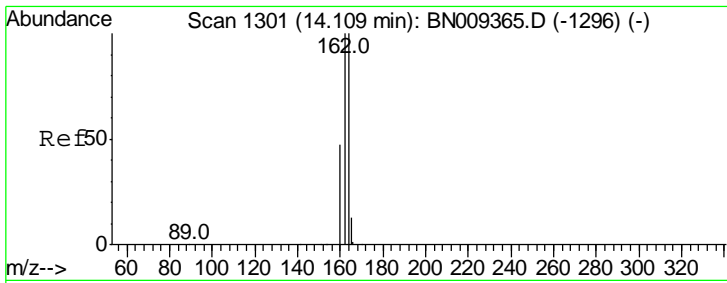
Tgt Ion	Resp	Lower	Upper
152	100		
151	18.6	14.8	22.2



#12
 2-Methylnaphthalene
 Concen: 0.395 ng
 RT: 11.89 min Scan# 1020
 Delta R.T. -0.01 min
 Lab File: BN009436.D
 Acq: 24 Jan 2020 10:40

Tgt Ion	Resp	Lower	Upper
142	100		
141	89.1	69.8	104.6
115	40.6	32.5	48.7



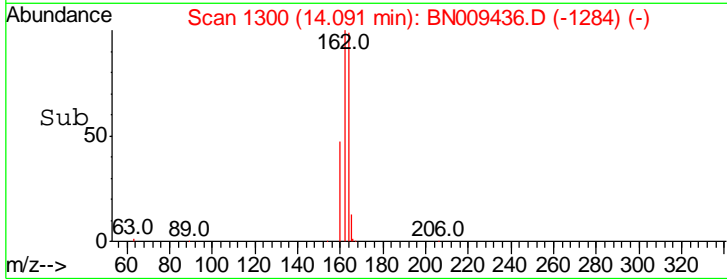
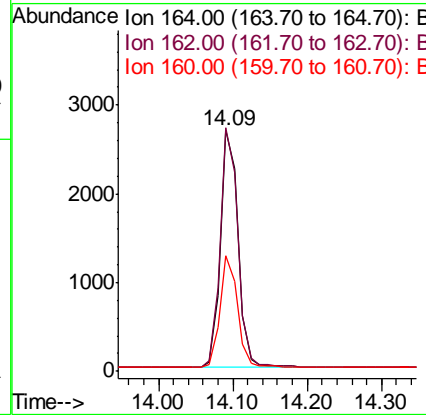
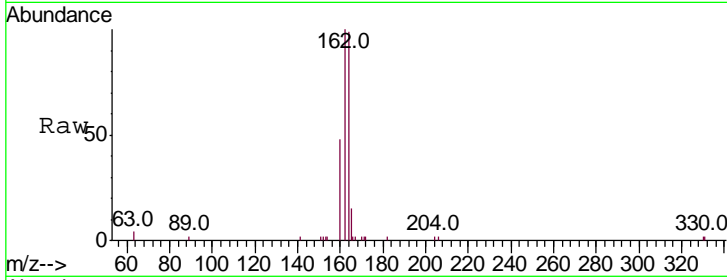


#13
 Acenaphthene-d10
 Concen: 0.400 ng
 RT: 14.09 min Scan# 1300
 Delta R.T. -0.02 min
 Lab File: BN009436.D
 Acq: 24 Jan 2020 10:40

Instrument :
 BNA_N
 ClientSampled :

Tgt Ion:164 Resp: 4377

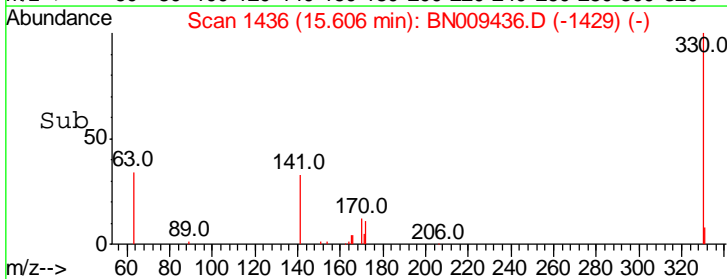
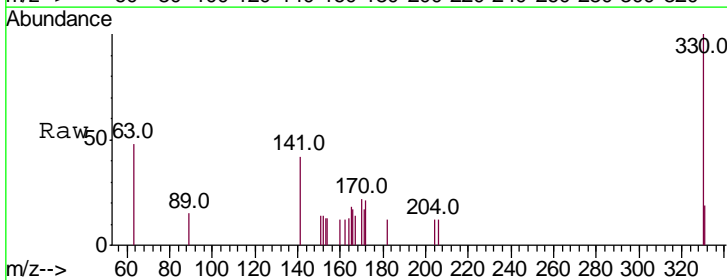
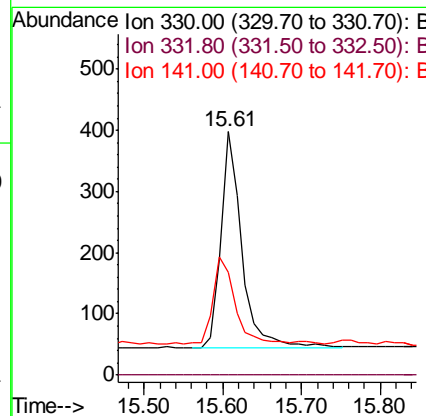
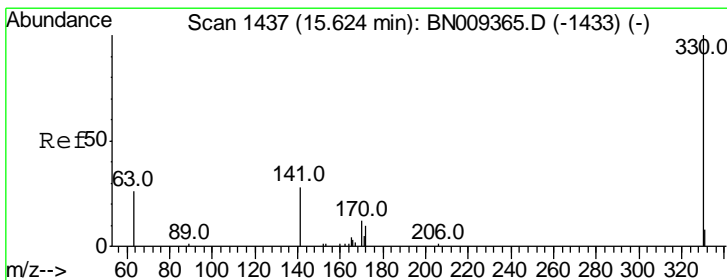
Ion	Ratio	Lower	Upper
164	100		
162	101.0	79.8	119.6
160	48.2	38.4	57.6

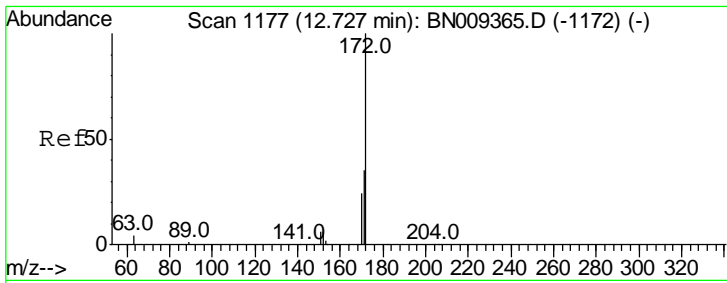


#14
 2,4,6-Tribromophenol
 Concen: 0.395 ng
 RT: 15.61 min Scan# 1436
 Delta R.T. -0.02 min
 Lab File: BN009436.D
 Acq: 24 Jan 2020 10:40

Tgt Ion:330 Resp: 653

Ion	Ratio	Lower	Upper
330	100		
332	0.0	0.0	0.0
141	41.5	33.1	49.7

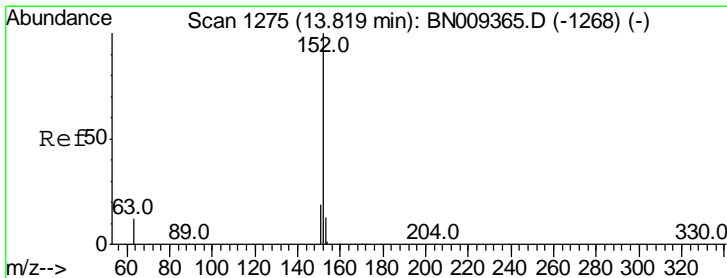
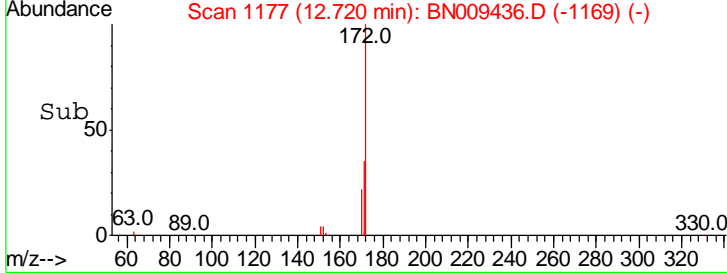
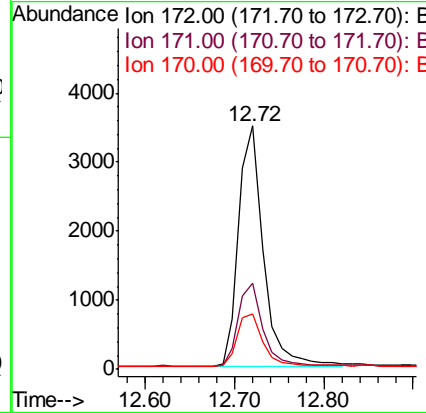
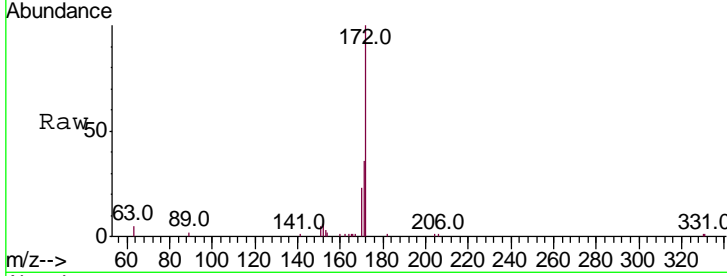




#15
 2-Fluorobiphenyl
 Concen: 0.411 ng
 RT: 12.72 min Scan# 1177
 Delta R.T. -0.01 min
 Lab File: BN009436.D
 Acq: 24 Jan 2020 10:40

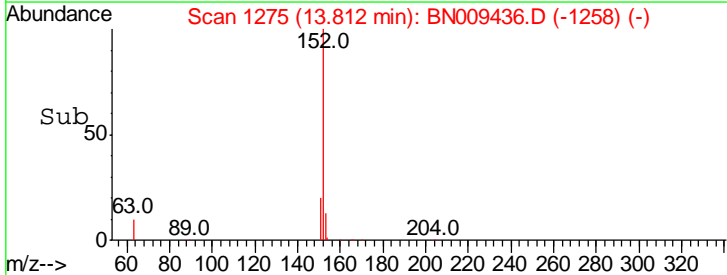
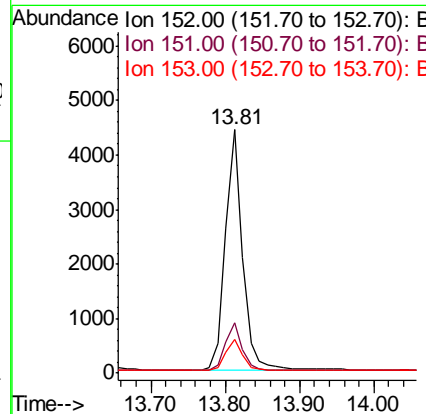
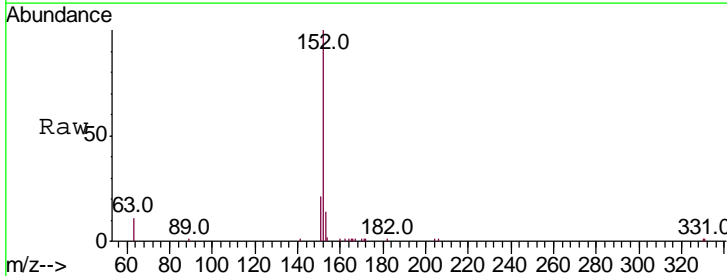
Instrument :
 BNA_N
 ClientSampled :

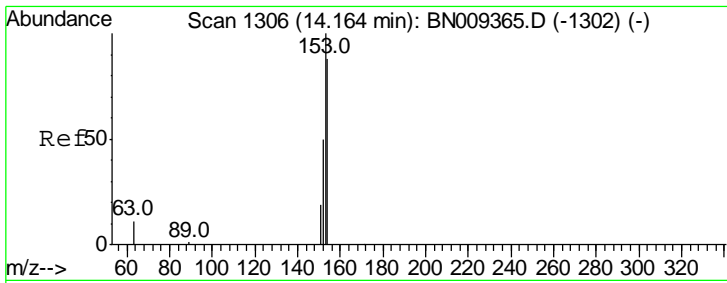
Tgt Ion	Resp	Lower	Upper
172	100		
171	35.6	29.5	44.3
170	22.7	20.7	31.1



#16
 Acenaphthylene
 Concen: 0.379 ng
 RT: 13.81 min Scan# 1275
 Delta R.T. -0.01 min
 Lab File: BN009436.D
 Acq: 24 Jan 2020 10:40

Tgt Ion	Resp	Lower	Upper
152	100		
151	19.4	15.4	23.2
153	13.1	10.4	15.6

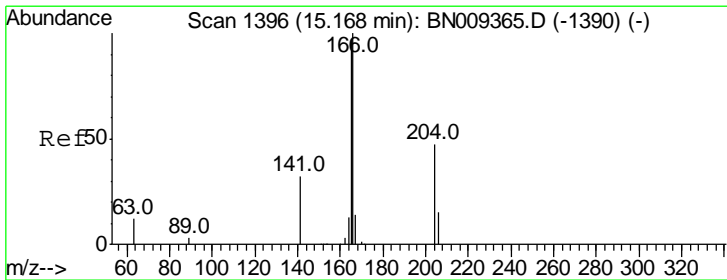
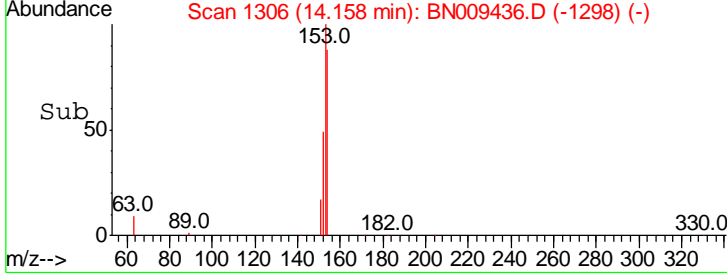
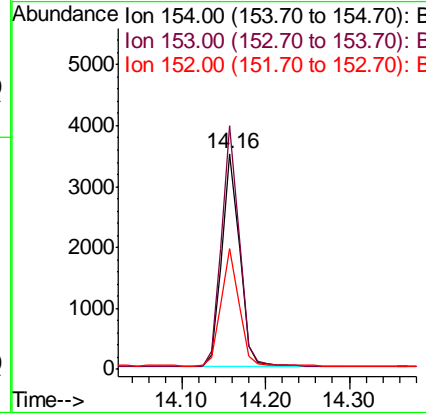
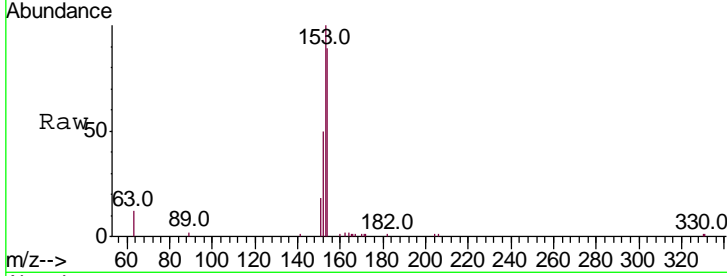




#17
 Acenaphthene
 Concen: 0.389 ng
 RT: 14.16 min Scan# 1306
 Delta R.T. -0.01 min
 Lab File: BN009436.D
 Acq: 24 Jan 2020 10:40

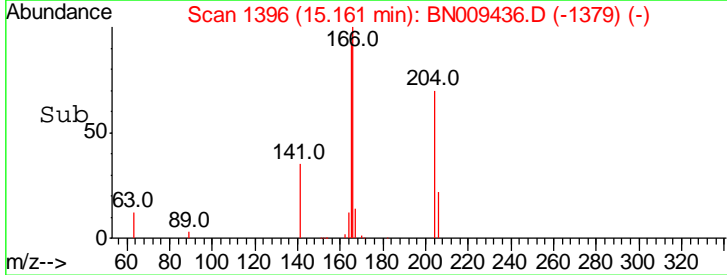
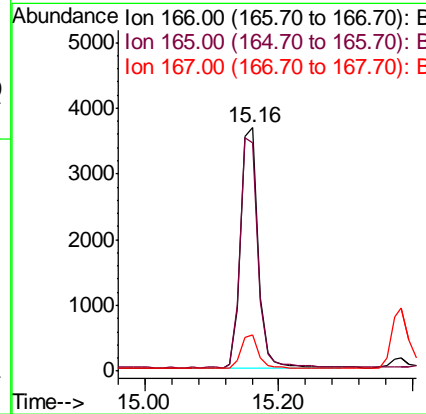
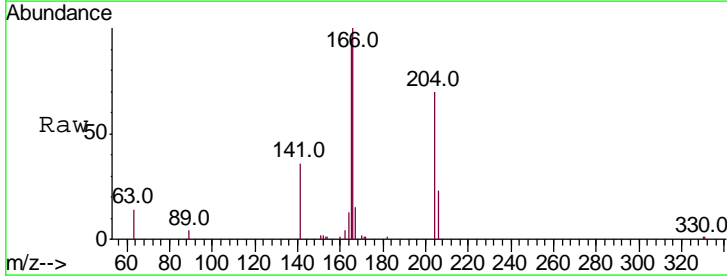
Instrument :
 BNA_N
 ClientSampled :

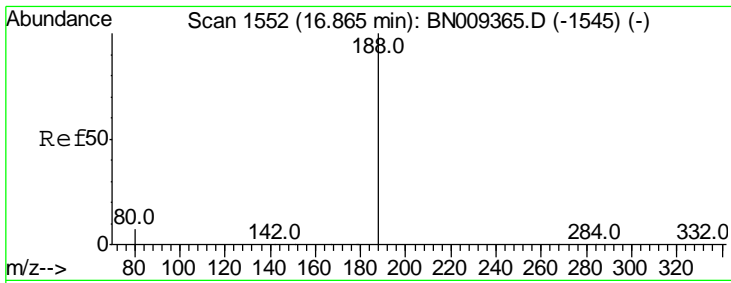
Tgt Ion	Resp	Lower	Upper
154	100		
153	113.0	90.5	135.7
152	55.9	45.3	67.9



#18
 Fluorene
 Concen: 0.377 ng
 RT: 15.16 min Scan# 1396
 Delta R.T. -0.01 min
 Lab File: BN009436.D
 Acq: 24 Jan 2020 10:40

Tgt Ion	Resp	Lower	Upper
166	100		
165	96.5	78.2	117.2
167	13.6	11.0	16.6

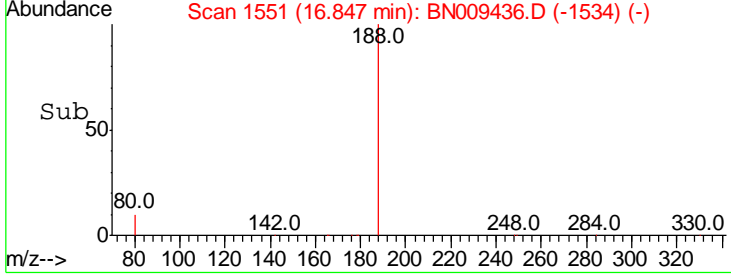
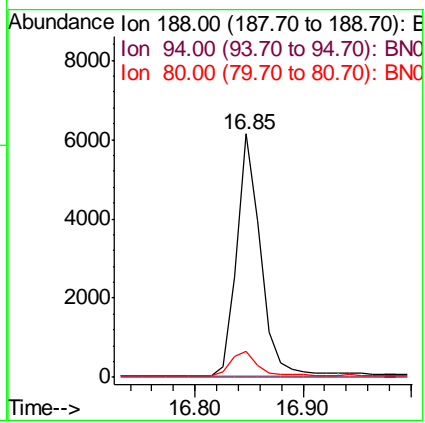
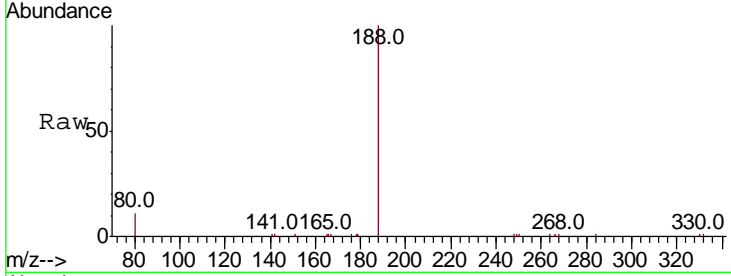




#19
 Phenanthrene-d10
 Concen: 0.400 ng
 RT: 16.85 min Scan# 1551
 Delta R.T. -0.02 min
 Lab File: BN009436.D
 Acq: 24 Jan 2020 10:40

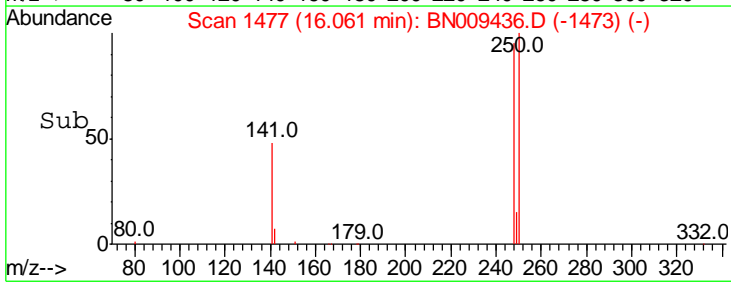
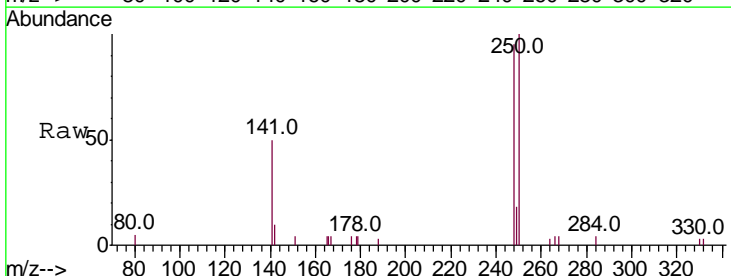
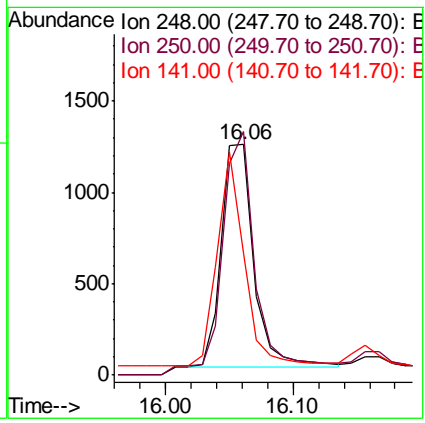
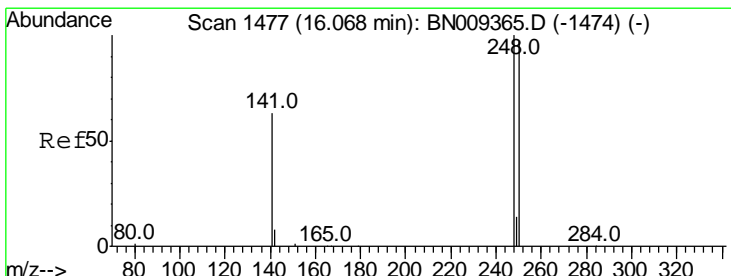
Instrument :
 BNA_N
 ClientSampled :

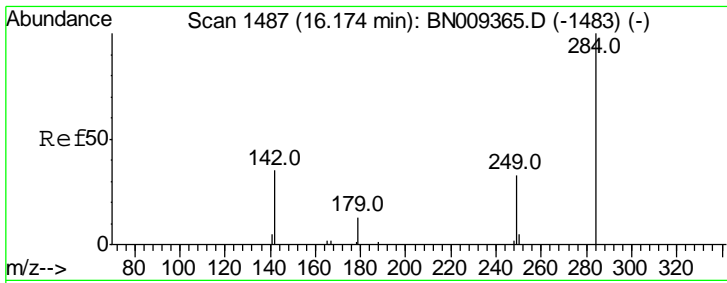
Tgt Ion	Resp	Lower	Upper
188	100		
94	0.0	0.0	0.0
80	10.9	6.6	10.0#



#20
 4-Bromophenyl-phenylether
 Concen: 0.385 ng
 RT: 16.06 min Scan# 1477
 Delta R.T. -0.01 min
 Lab File: BN009436.D
 Acq: 24 Jan 2020 10:40

Tgt Ion	Resp	Lower	Upper
248	100		
250	105.7	77.8	116.8
141	53.0	53.4	80.0#

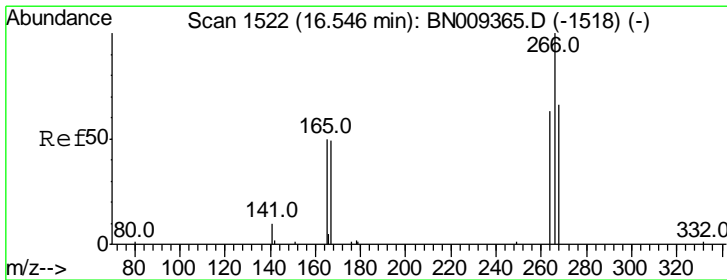
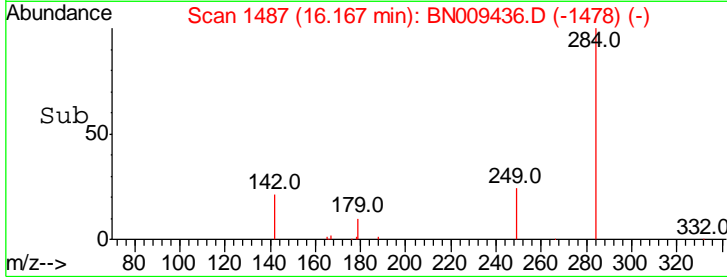
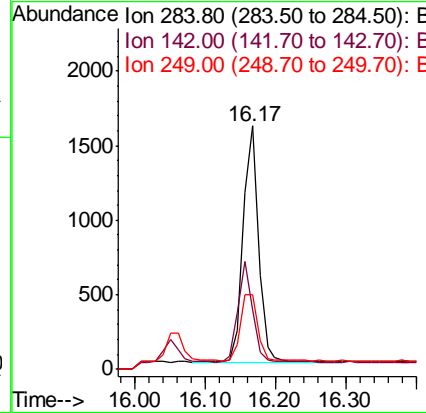
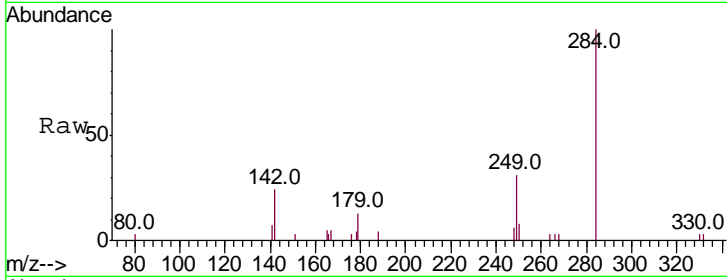




#21
 Hexachlorobenzene
 Concen: 0.398 ng
 RT: 16.17 min Scan# 1487
 Delta R.T. -0.01 min
 Lab File: BN009436.D
 Acq: 24 Jan 2020 10:40

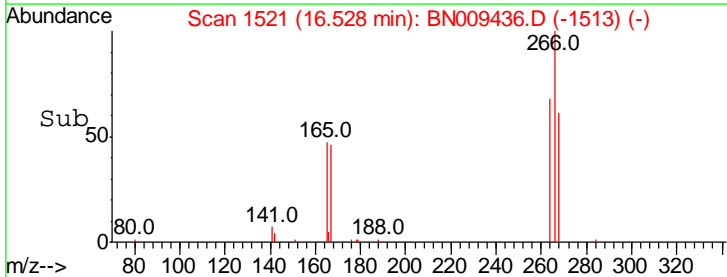
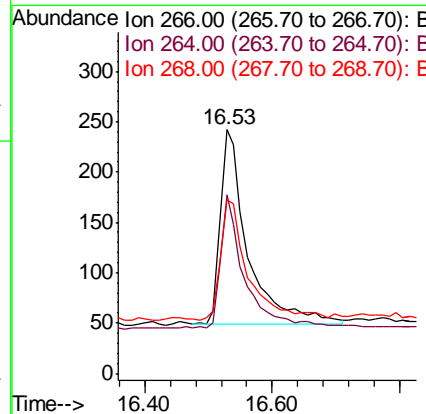
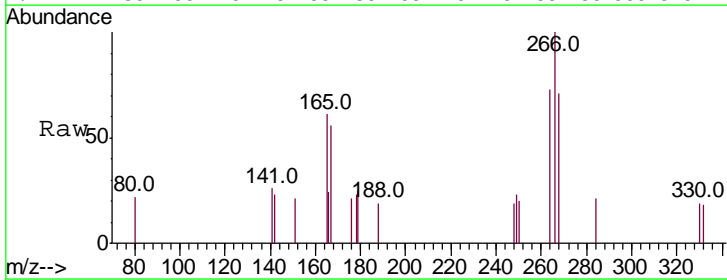
Instrument :
 BNA_N
 ClientSampled :

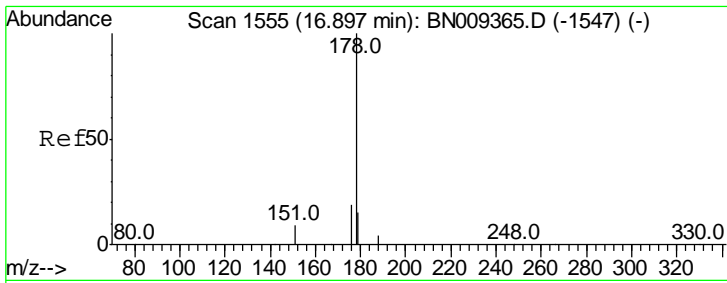
Tgt Ion	Resp	Lower	Upper
284	2373		
284	100		
142	40.2	33.8	50.8
249	32.0	27.0	40.4



#22
 Pentachlorophenol
 Concen: 0.418 ng
 RT: 16.53 min Scan# 1521
 Delta R.T. -0.02 min
 Lab File: BN009436.D
 Acq: 24 Jan 2020 10:40

Tgt Ion	Resp	Lower	Upper
266	572		
266	100		
264	73.1	57.8	86.6
268	71.5	63.8	95.6

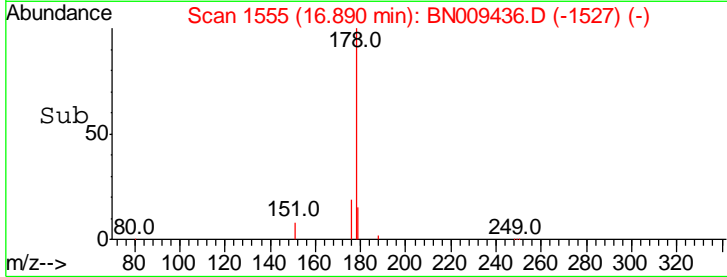
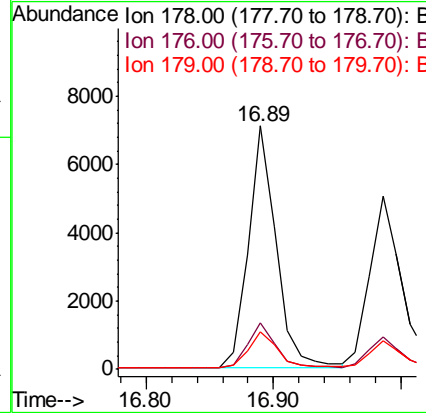
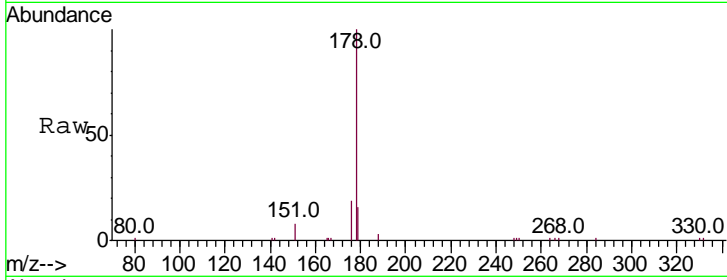




#23
 Phenanthrene
 Concen: 0.382 ng
 RT: 16.89 min Scan# 1555
 Delta R.T. -0.01 min
 Lab File: BN009436.D
 Acq: 24 Jan 2020 10:40

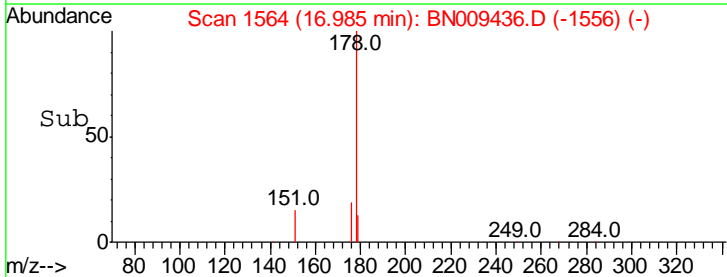
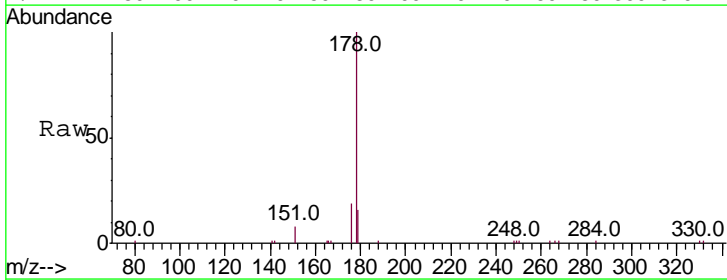
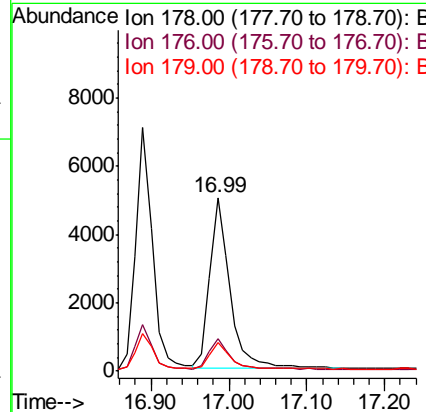
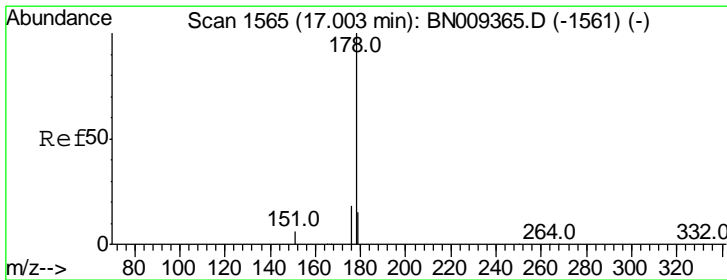
Instrument :
 BNA_N
 ClientSampled :

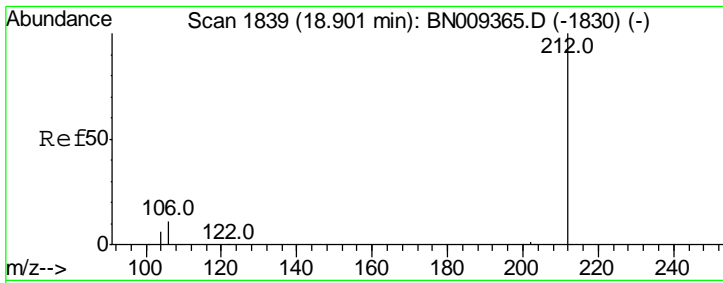
Tgt Ion	Resp	Lower	Upper
178	10678		
176	18.8	15.0	22.4
179	15.4	12.3	18.5



#24
 Anthracene
 Concen: 0.378 ng
 RT: 16.99 min Scan# 1564
 Delta R.T. -0.02 min
 Lab File: BN009436.D
 Acq: 24 Jan 2020 10:40

Tgt Ion	Resp	Lower	Upper
178	8879		
176	18.1	14.6	21.8
179	15.5	12.5	18.7



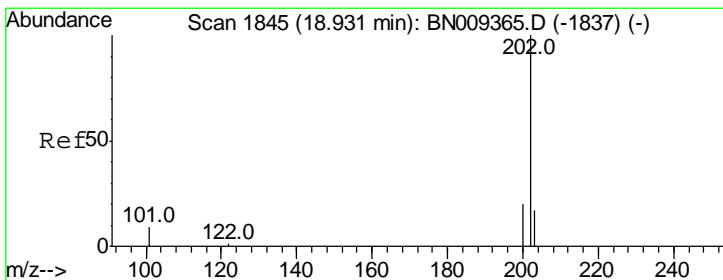
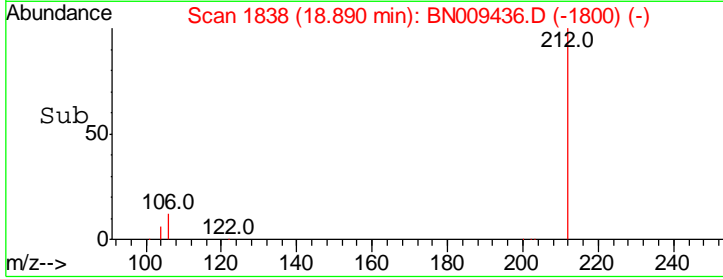
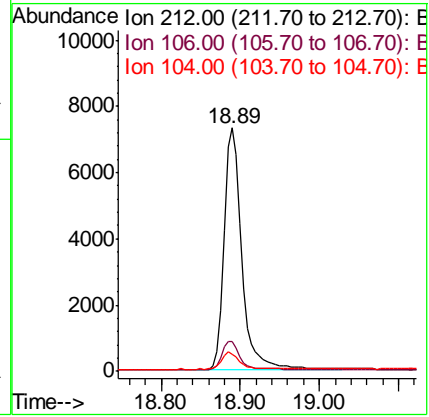
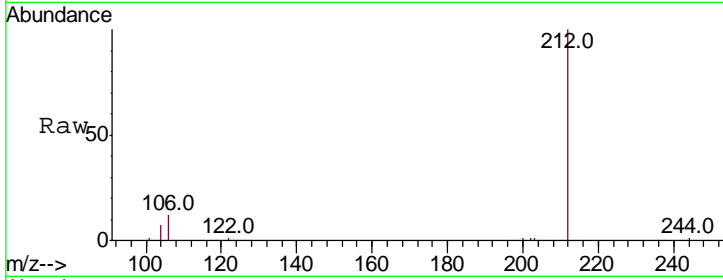


#25
 Fluoranthene-d10
 Concen: 0.365 ng
 RT: 18.89 min Scan# 1838
 Delta R.T. -0.01 min
 Lab File: BN009436.D
 Acq: 24 Jan 2020 10:40

Instrument :
 BNA_N
 ClientSampled :

Tgt Ion: 212 Resp: 11660

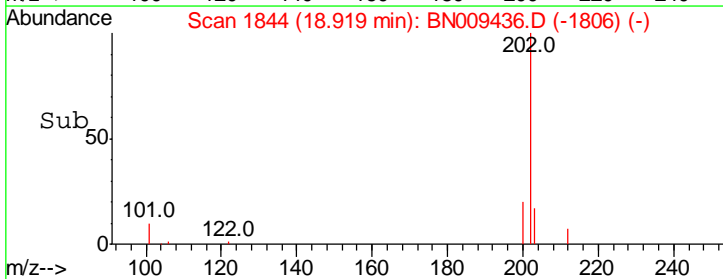
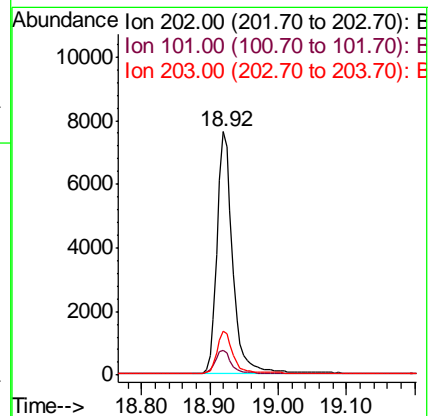
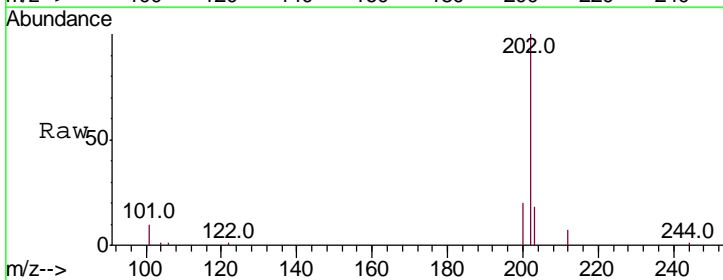
Ion	Ratio	Lower	Upper
212	100		
106	12.0	9.2	13.8
104	7.0	5.4	8.0

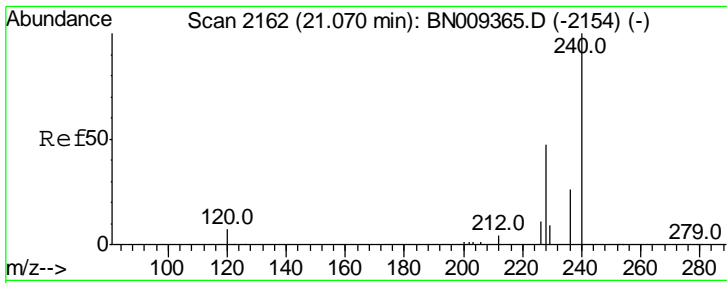


#26
 Fluoranthene
 Concen: 0.370 ng
 RT: 18.92 min Scan# 1844
 Delta R.T. -0.01 min
 Lab File: BN009436.D
 Acq: 24 Jan 2020 10:40

Tgt Ion: 202 Resp: 12128

Ion	Ratio	Lower	Upper
202	100		
101	9.8	8.0	12.0
203	16.8	13.5	20.3

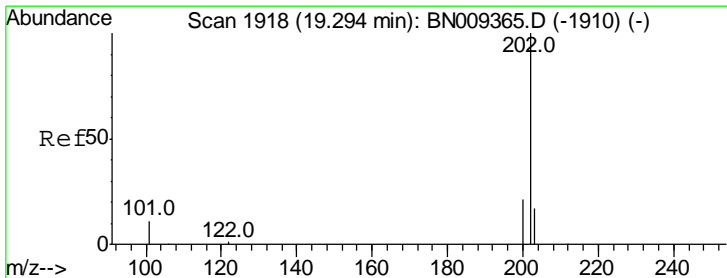
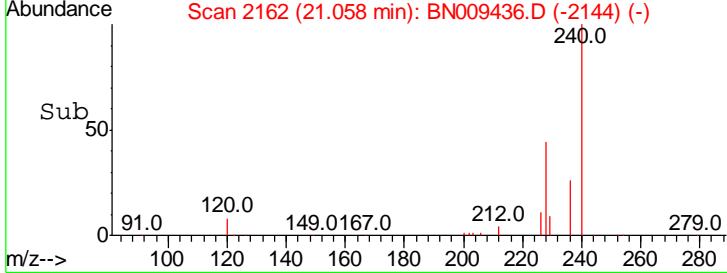
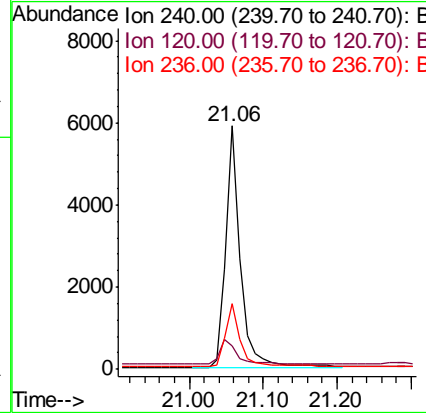
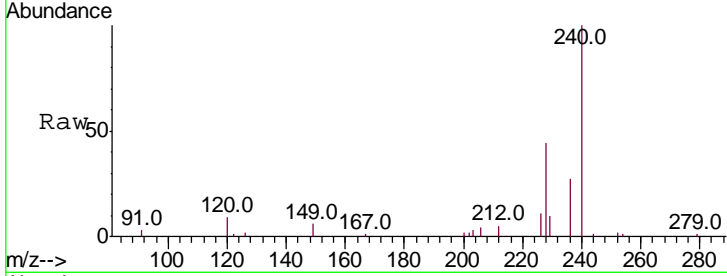




#27
 Chrysene-d12
 Concen: 0.400 ng
 RT: 21.06 min Scan# 2162
 Delta R.T. -0.01 min
 Lab File: BN009436.D
 Acq: 24 Jan 2020 10:40

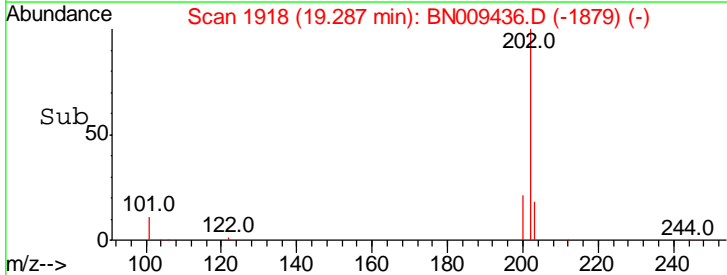
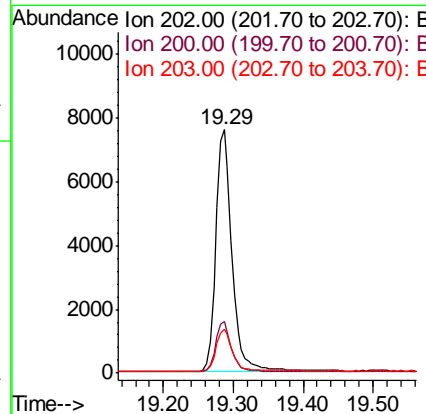
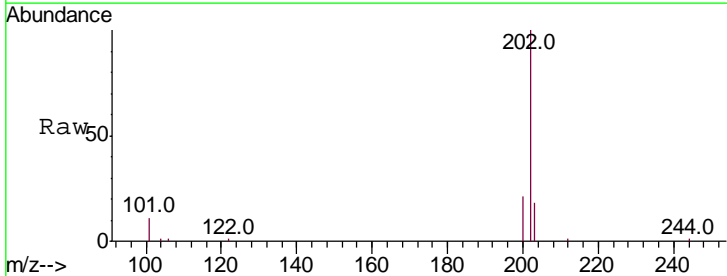
Instrument :
 BNA_N
 ClientSampled :

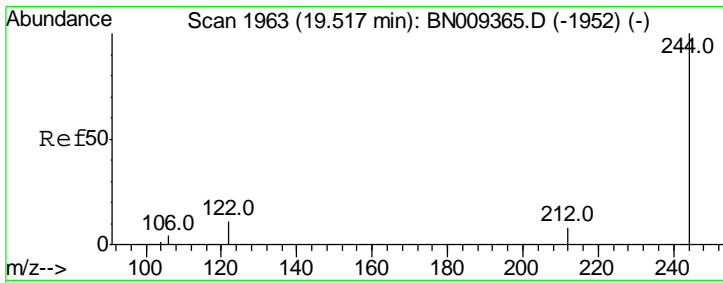
Tgt Ion	Resp	Lower	Upper
240	100		
120	9.5	8.1	12.1
236	27.1	22.2	33.4



#28
 Pyrene
 Concen: 0.389 ng
 RT: 19.29 min Scan# 1918
 Delta R.T. -0.01 min
 Lab File: BN009436.D
 Acq: 24 Jan 2020 10:40

Tgt Ion	Resp	Lower	Upper
202	100		
200	20.2	16.2	24.2
203	17.5	14.1	21.1

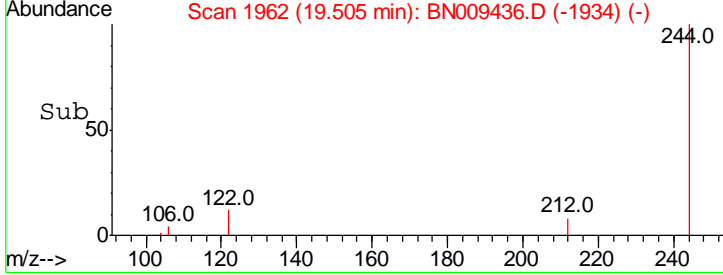
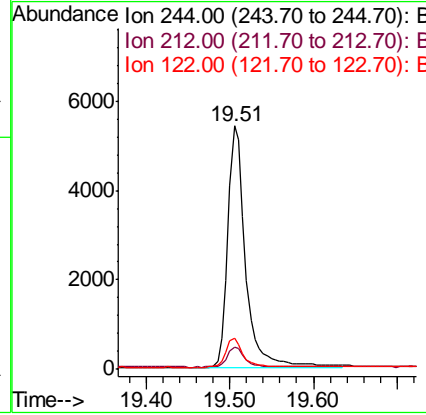
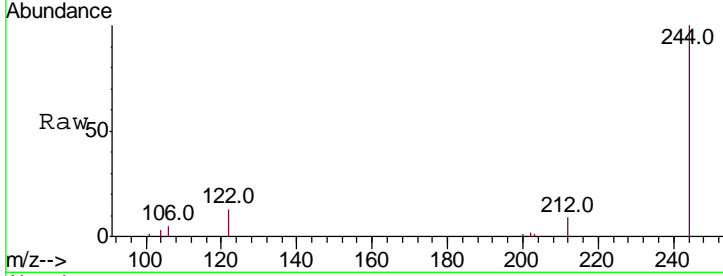




#29
 Terphenyl-d14
 Concen: 0.405 ng
 RT: 19.51 min Scan# 1962
 Delta R.T. -0.01 min
 Lab File: BN009436.D
 Acq: 24 Jan 2020 10:40

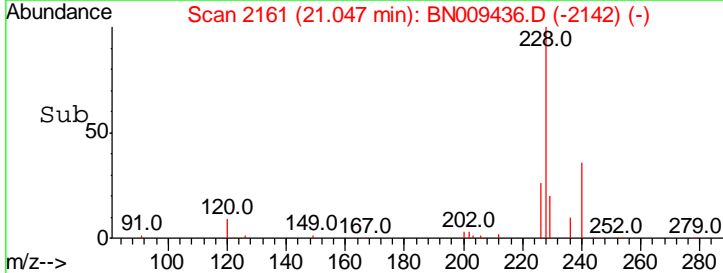
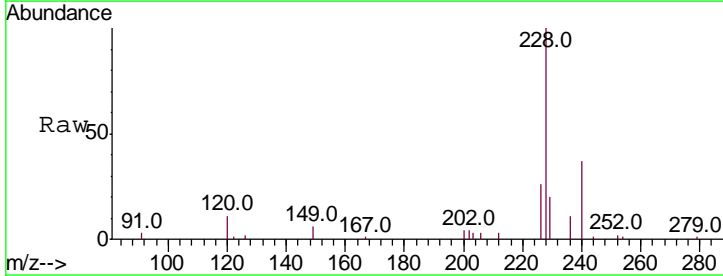
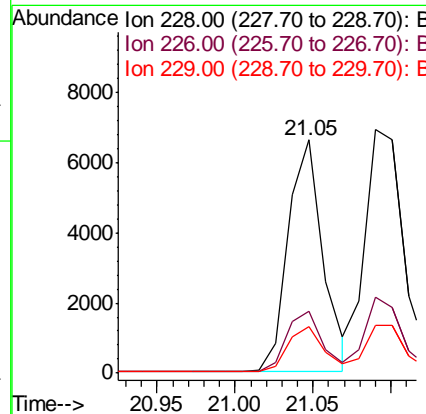
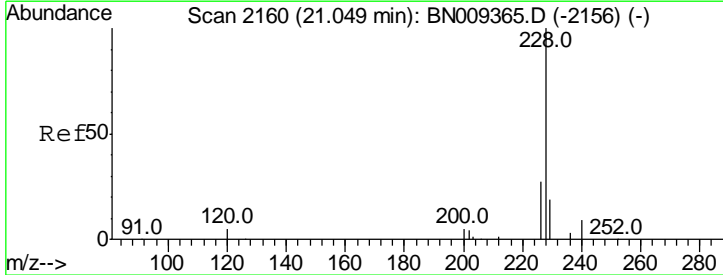
Instrument :
 BNA_N
 ClientSampled :

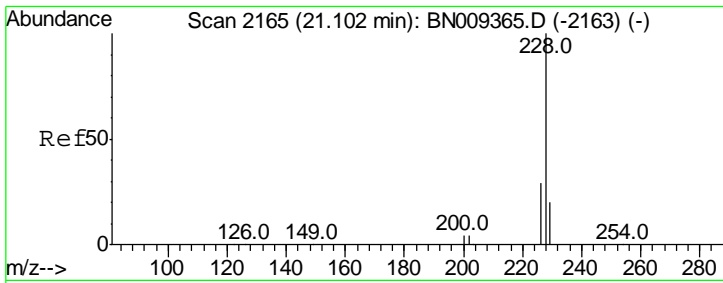
Tgt Ion	Resp	Lower	Upper
244	100		
212	9.0	7.5	11.3
122	12.6	9.8	14.6



#30
 Benzo(a)anthracene
 Concen: 0.375 ng
 RT: 21.05 min Scan# 2161
 Delta R.T. -0.00 min
 Lab File: BN009436.D
 Acq: 24 Jan 2020 10:40

Tgt Ion	Resp	Lower	Upper
228	100		
226	26.3	22.5	33.7
229	20.2	16.1	24.1

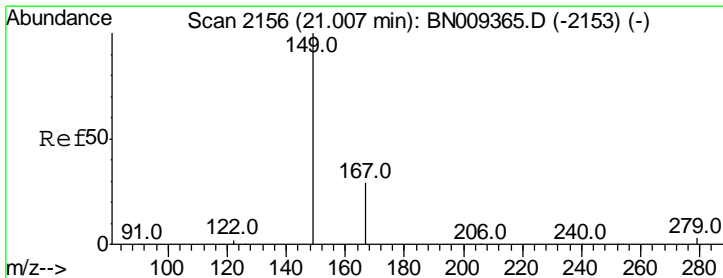
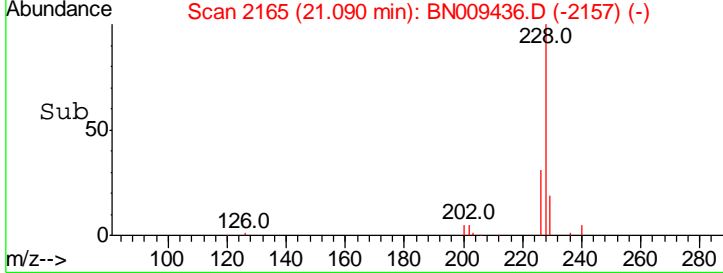
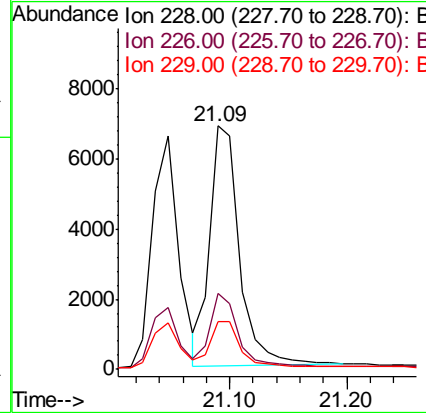
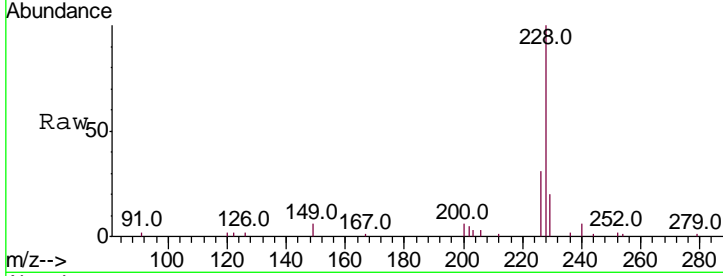




#31
 Chrysene
 Concen: 0.388 ng
 RT: 21.09 min Scan# 2165
 Delta R.T. -0.01 min
 Lab File: BN009436.D
 Acq: 24 Jan 2020 10:40

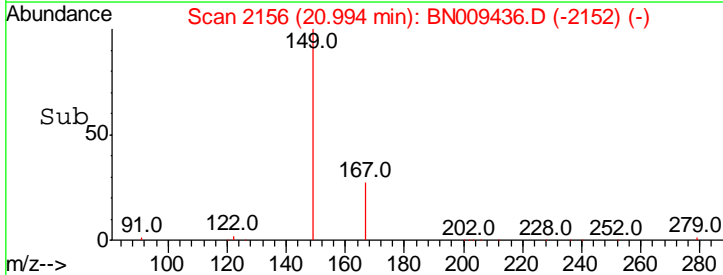
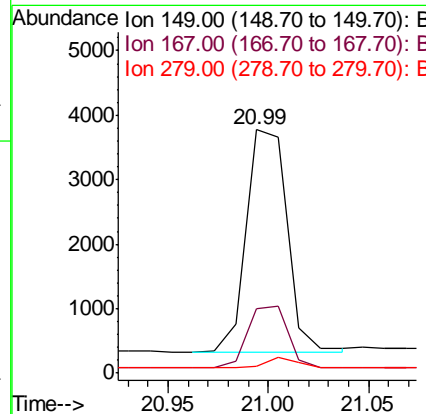
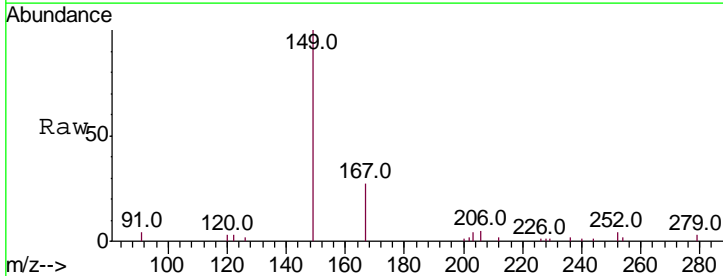
Instrument :
 BNA_N
 ClientSampled :

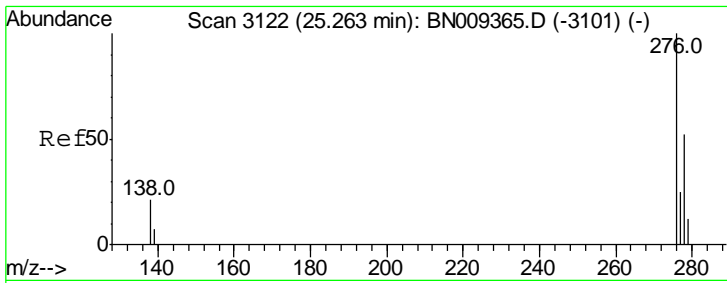
Tgt Ion	Resp	Lower	Upper
228	12083		
226	31.0	23.8	35.8
229	19.7	16.6	24.8



#32
 Bis(2-ethylhexyl)phthalate
 Concen: 0.409 ng
 RT: 20.99 min Scan# 2156
 Delta R.T. -0.01 min
 Lab File: BN009436.D
 Acq: 24 Jan 2020 10:40

Tgt Ion	Resp	Lower	Upper
149	4933		
167	27.4	22.9	34.3
279	3.5	3.4	5.0

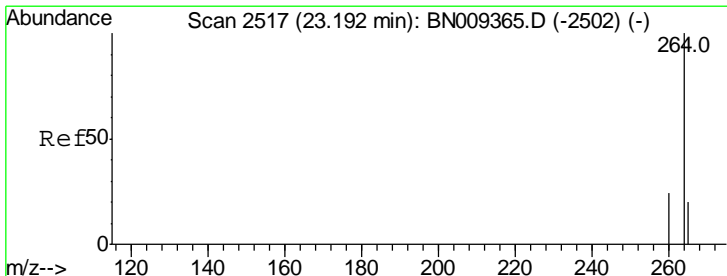
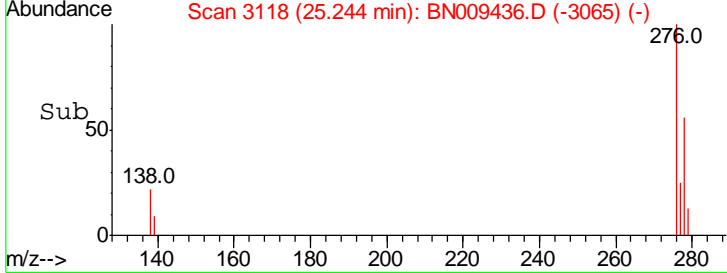
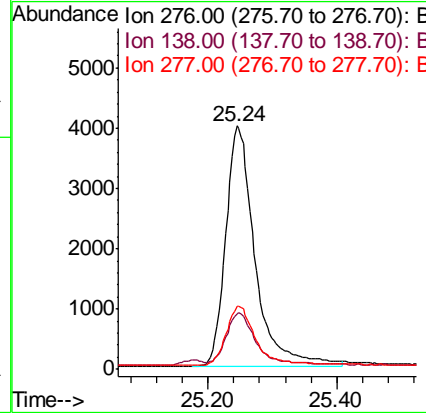
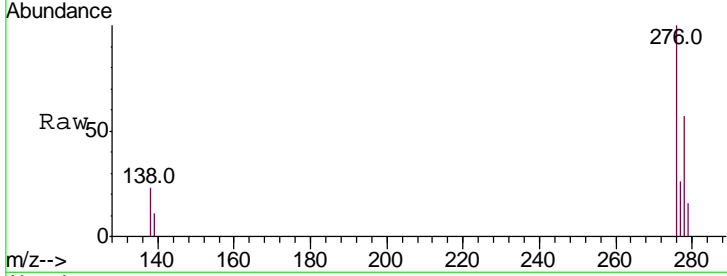




#33
 Indeno(1,2,3-cd)pyrene
 Concen: 0.392 ng
 RT: 25.24 min Scan# 3118
 Delta R.T. -0.02 min
 Lab File: BN009436.D
 Acq: 24 Jan 2020 10:40

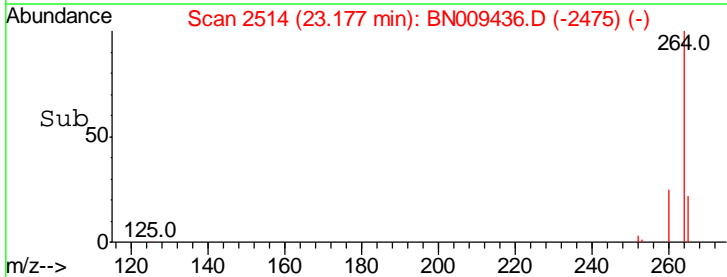
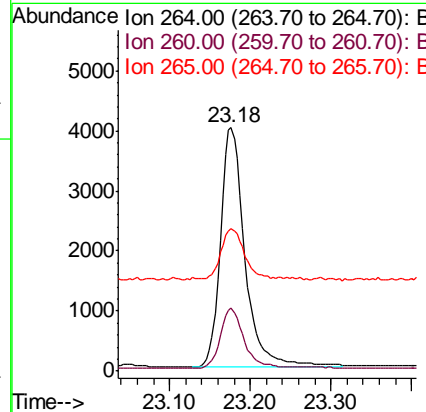
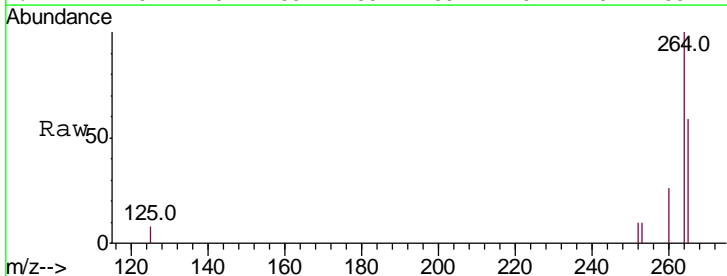
Instrument :
 BNA_N
 ClientSampled :

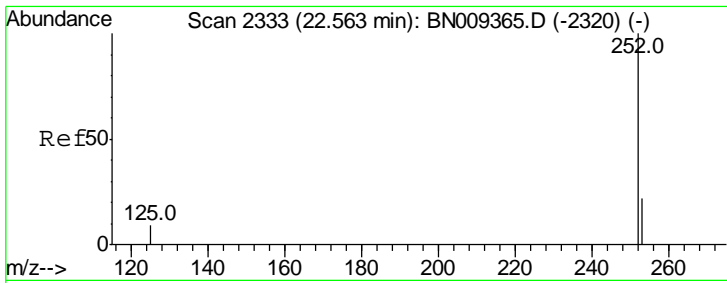
Tgt Ion	Resp	Lower	Upper
276	100		
138	20.9	15.9	23.9
277	24.5	19.8	29.6



#34
 Perylene-d12
 Concen: 0.400 ng
 RT: 23.18 min Scan# 2514
 Delta R.T. -0.02 min
 Lab File: BN009436.D
 Acq: 24 Jan 2020 10:40

Tgt Ion	Resp	Lower	Upper
264	100		
260	25.7	20.1	30.1
265	58.6	68.2	102.4#

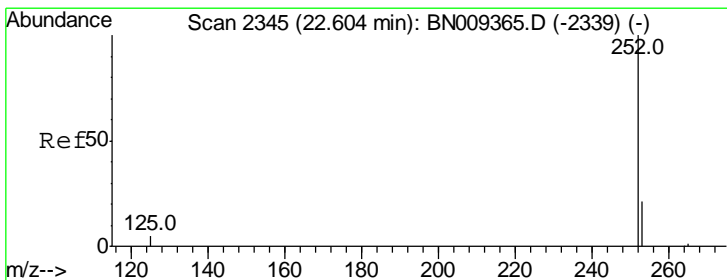
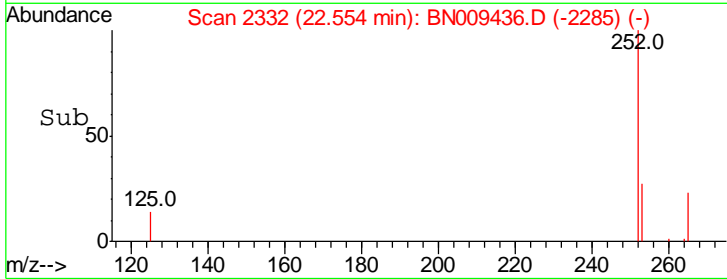
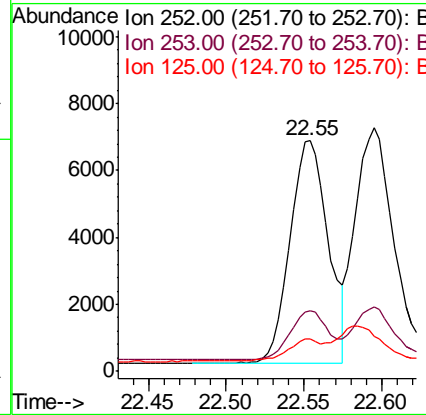
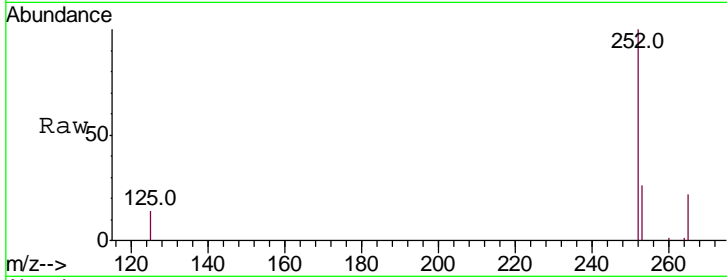




#35
 Benzo(b)fluoranthene
 Concen: 0.369 ng
 RT: 22.55 min Scan# 2332
 Delta R.T. -0.01 min
 Lab File: BN009436.D
 Acq: 24 Jan 2020 10:40

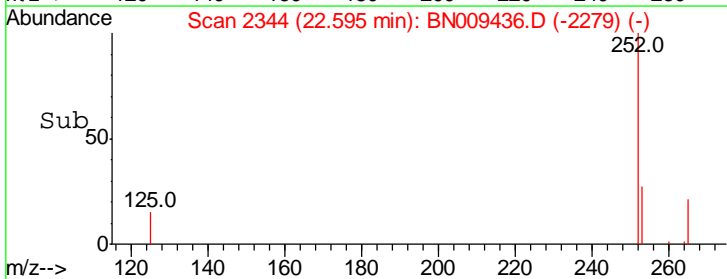
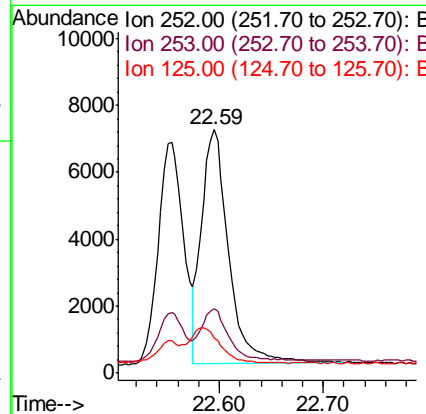
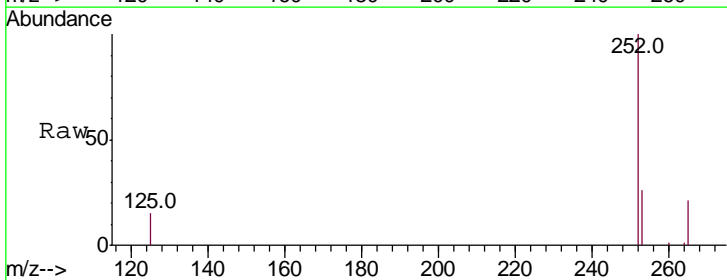
Instrument :
 BNA_N
 ClientSampled :

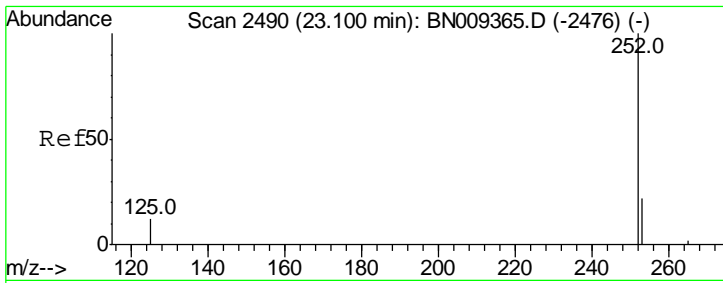
Tgt Ion	Resp	Lower	Upper
252	11388		
253	26.1	22.4	33.6
125	13.8	11.6	17.4



#36
 Benzo(k)fluoranthene
 Concen: 0.372 ng
 RT: 22.59 min Scan# 2344
 Delta R.T. -0.01 min
 Lab File: BN009436.D
 Acq: 24 Jan 2020 10:40

Tgt Ion	Resp	Lower	Upper
252	12649		
253	26.4	21.9	32.9
125	14.5	12.0	18.0

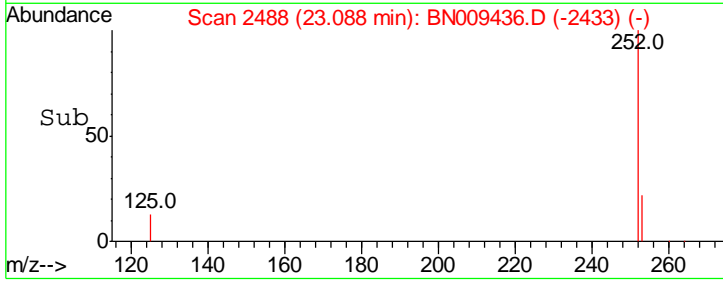
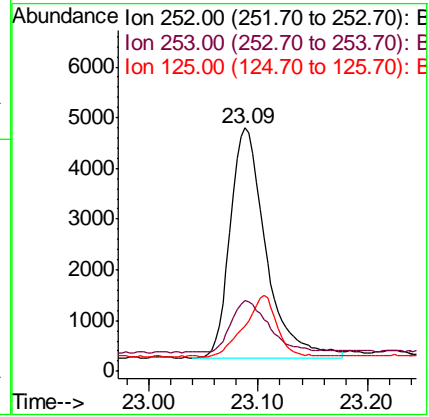
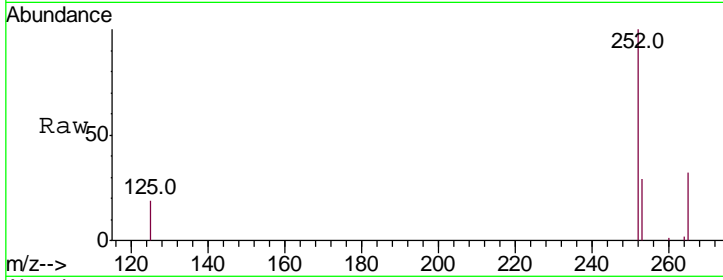




#37
 Benzo(a)pyrene
 Concen: 0.379 ng
 RT: 23.09 min Scan# 2488
 Delta R.T. -0.01 min
 Lab File: BN009436.D
 Acq: 24 Jan 2020 10:40

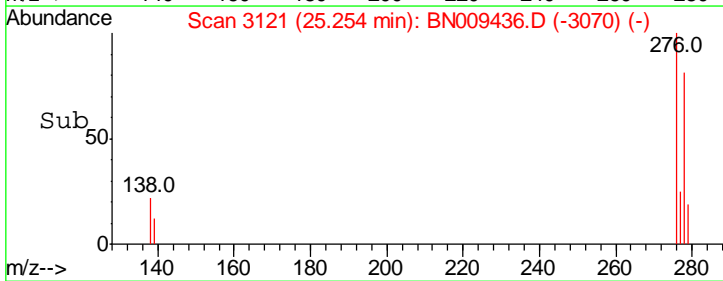
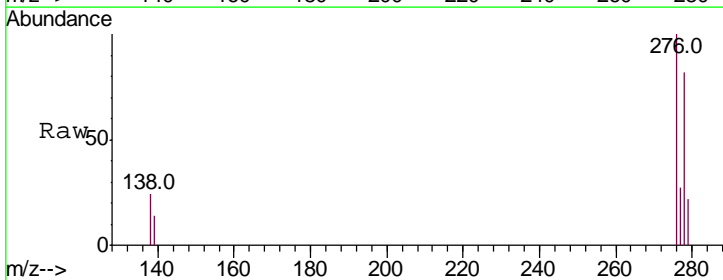
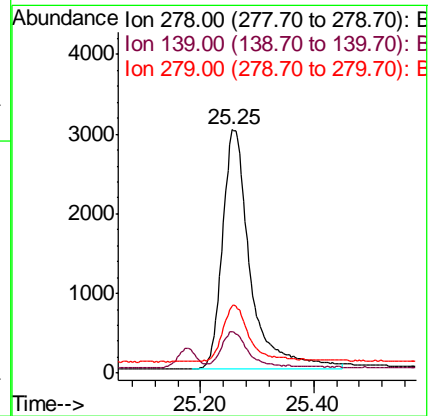
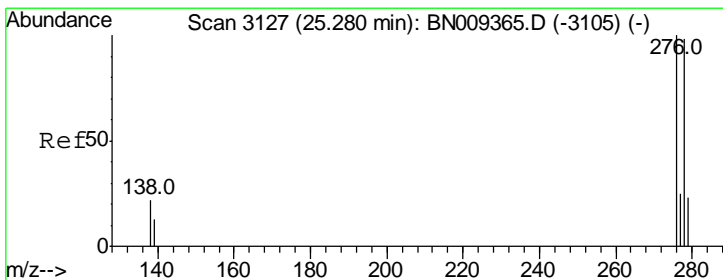
Instrument :
 BNA_N
 ClientSampled :

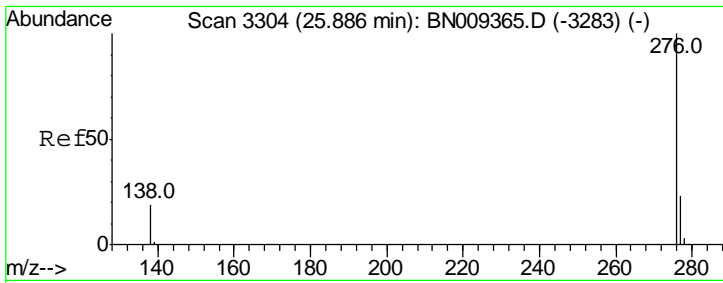
Tgt Ion	Resp	Lower	Upper
252	10284		
253	29.0	25.4	38.0
125	18.7	16.2	24.2



#38
 Dibenzo(a,h)anthracene
 Concen: 0.372 ng
 RT: 25.25 min Scan# 3121
 Delta R.T. -0.03 min
 Lab File: BN009436.D
 Acq: 24 Jan 2020 10:40

Tgt Ion	Resp	Lower	Upper
278	10156		
139	16.8	14.5	21.7
279	27.5	24.2	36.4





#39
 Benzo(a,h,i)perylene
 Concen: 0.357 ng
 RT: 25.87 min Scan# 3301
 Delta R.T. -0.02 min
 Lab File: BN009436.D
 Acq: 24 Jan 2020 10:40

Instrument :
 BNA_N
 ClientSampled :

Tot Ion	Resp	Lower	Upper
276	10725		
276	100		
277	25.8	20.6	30.8
138	20.8	17.1	25.7

