

Data Path : Z:\SVOASRV\HPCHEM1\BNA N\DATA\BN012420\
 Data File : BN009440.D
 Acq On : 24 Jan 2020 13:39
 Operator : CG/JU
 Sample : PB126299BL
 Misc :
 ALS Vial : 8 Sample Multiplier: 1

Instrument :
 BNA_N
 ClientSampleId :

Quant Time: Jan 24 14:29:33 2020
 Quant Method : Z:\SVOASRV\HPCHEM1\BNA N\METHODS\8270-SIM-BN011420.M
 Quant Title : ASP BNA STANDARDS FOR 5 POINT CALIBRATION
 QLast Update : Tue Jan 14 09:33:55 2020
 Response via : Initial Calibration

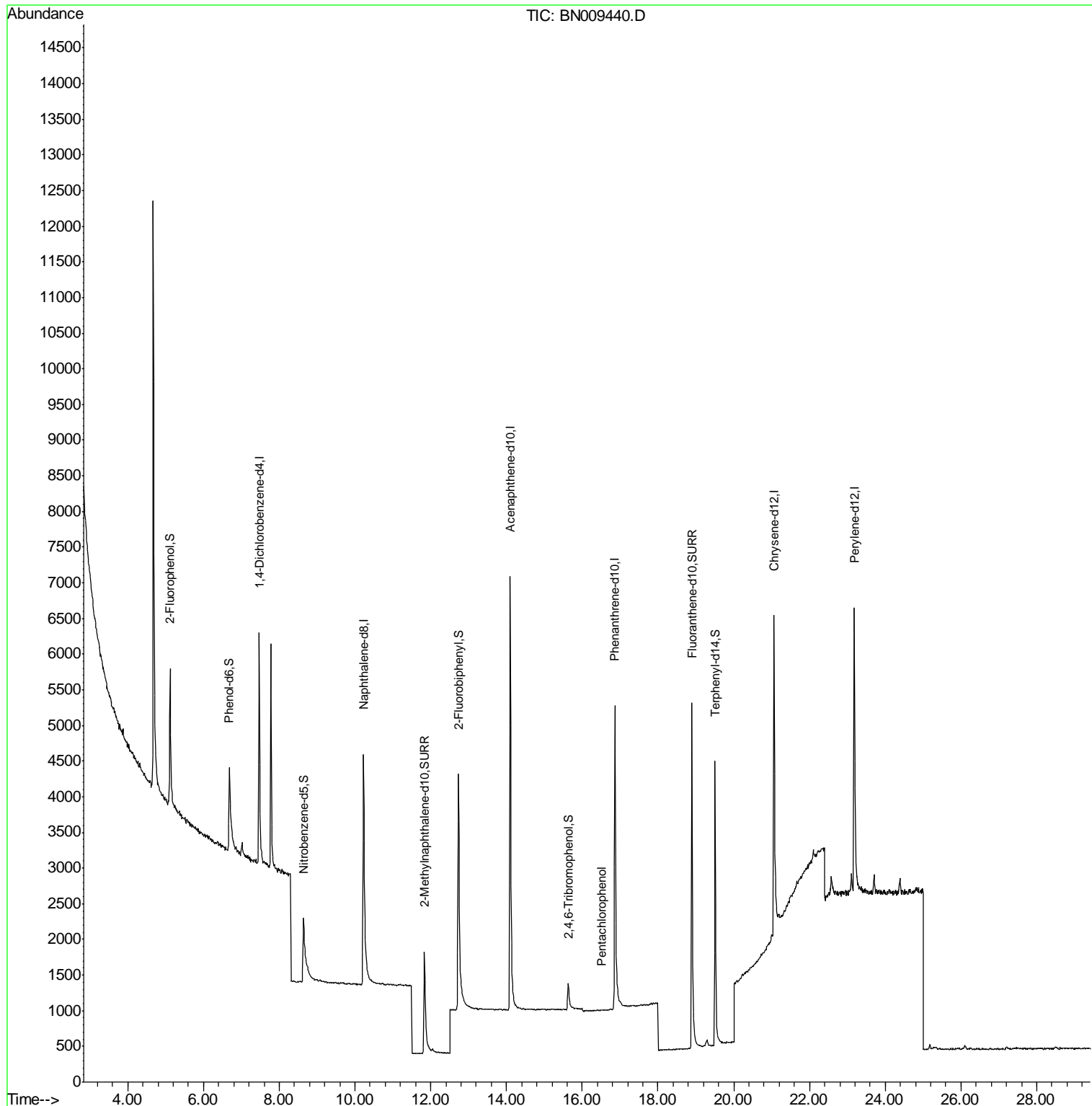
Internal Standards	R.T.	QIon	Response	Conc	Units	Dev(Min)
1) 1,4-Dichlorobenzene-d4	7.47	152	1893	0.40	ng	0.00
7) Naphthalene-d8	10.23	136	6809	0.40	ng	0.00
13) Acenaphthene-d10	14.10	164	4864	0.40	ng	0.00
19) Phenanthrene-d10	16.86	188	9519	0.40	ng	0.00
27) Chrysene-d12	21.07	240	6320	0.40	ng	0.00
34) Perylene-d12	23.18	264	6476	0.40	ng	0.00
System Monitoring Compounds						
4) 2-Fluorophenol	5.12	112	1784	0.41	ng	0.00
5) Phenol-d6	6.69	99	2047	0.41	ng	0.00
8) Nitrobenzene-d5	8.64	82	1652	0.30	ng	0.01
11) 2-Methylnaphthalene-d10	11.84	152	3558	0.27	ng	0.00
14) 2,4,6-Tribromophenol	15.63	330	498	0.27	ng	0.00
15) 2-Fluorobiphenyl	12.73	172	5362	0.29	ng	0.00
25) Fluoranthene-d10	18.89	212	7606	0.23	ng	0.00
29) Terphenyl-d14	19.51	244	5401	0.36	ng	0.00
Target Compounds						Qvalue
22) Pentachlorophenol	16.52	266	1	0.145	ng	# 72

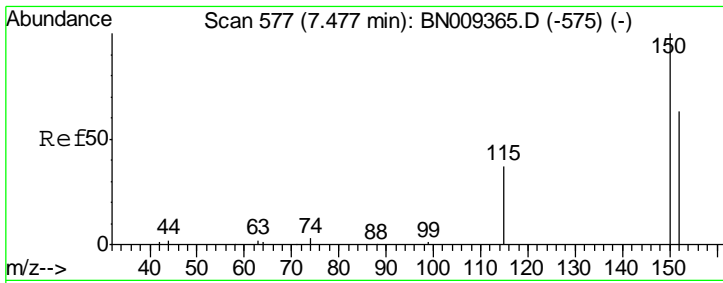
(#) = qualifier out of range (m) = manual integration (+) = signals summed

Data Path : Z:\SVOASRV\HPCHEM1\BNA N\DATA\BN012420\
 Data File : BN009440.D
 Acq On : 24 Jan 2020 13:39
 Operator : CG/JU
 Sample : PB126299BL
 Misc :
 ALS Vial : 8 Sample Multiplier: 1

Instrument :
 BNA_N
 ClientSampled :

Quant Time: Jan 24 14:29:33 2020
 Quant Method : Z:\SVOASRV\HPCHEM1\BNA N\METHODS\8270-SIM-BN011420.M
 Quant Title : ASP BNA STANDARDS FOR 5 POINT CALIBRATION
 QLast Update : Tue Jan 14 09:33:55 2020
 Response via : Initial Calibration

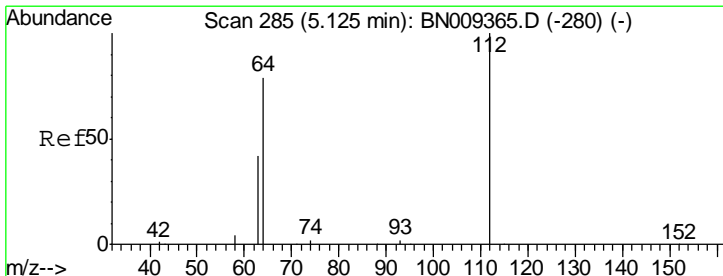
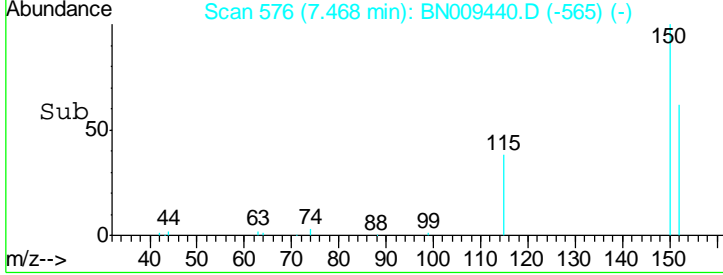
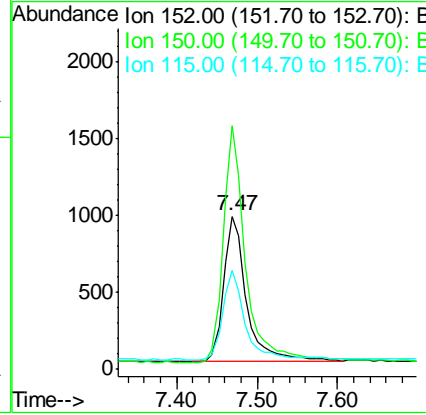
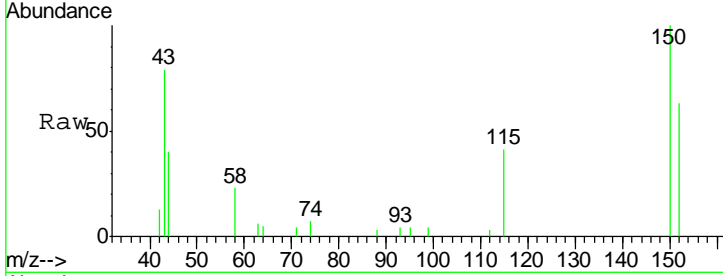




#1
 1,4-Dichlorobenzene-d4
 Concen: 0.400 ng
 RT: 7.47 min Scan# 576
 Delta R.T. -0.01 min
 Lab File: BN009440.D
 Acq: 24 Jan 2020 13:39

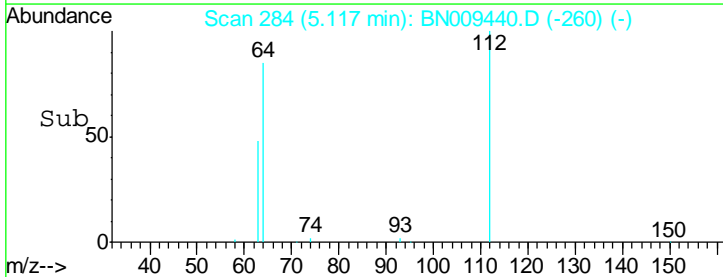
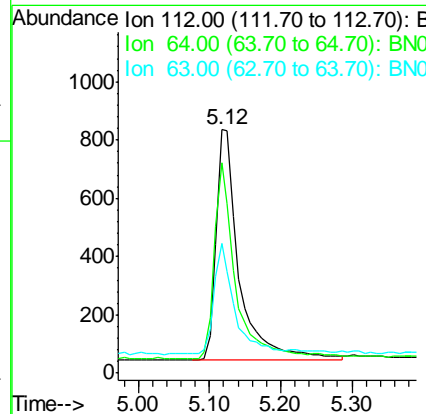
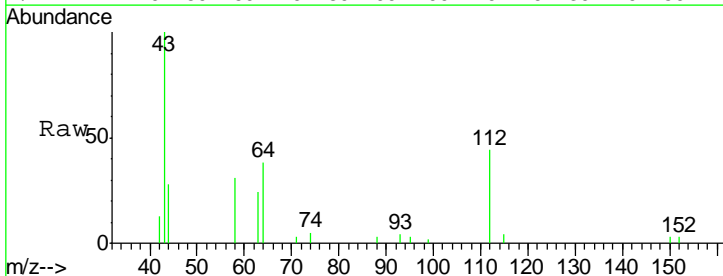
Instrument :
 BNA_N
 ClientSampleId :

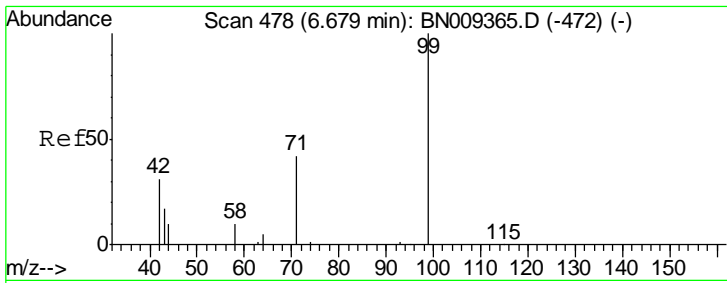
Tgt Ion	Resp	Lower	Upper
152	100		
150	158.9	125.7	188.5
115	64.7	53.3	79.9



#4
 2-Fluorophenol
 Concen: 0.409 ng
 RT: 5.12 min Scan# 284
 Delta R.T. -0.01 min
 Lab File: BN009440.D
 Acq: 24 Jan 2020 13:39

Tgt Ion	Resp	Lower	Upper
112	100		
64	78.9	61.5	92.3
63	42.4	35.0	52.4

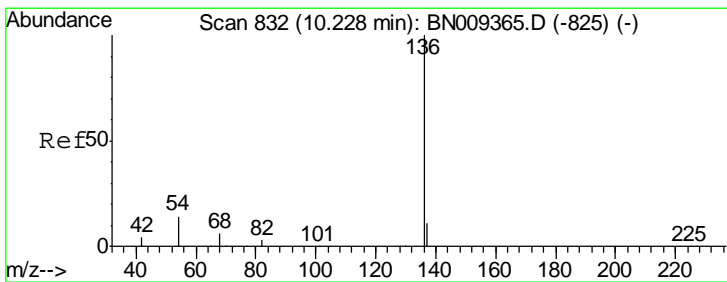
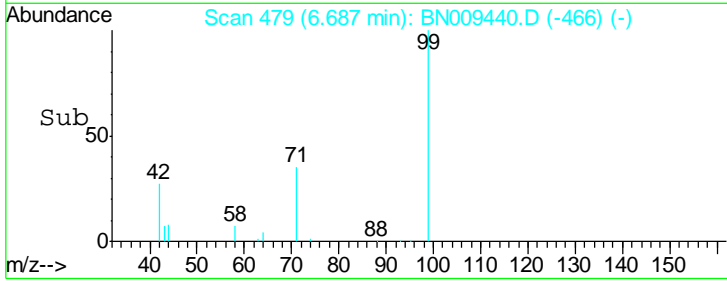
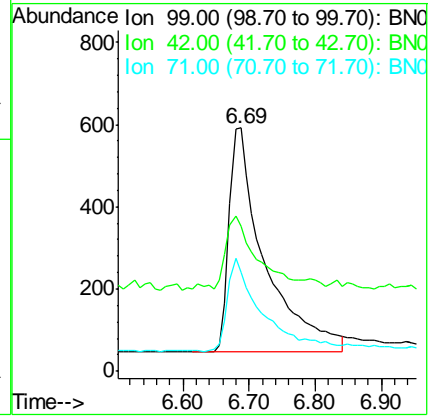
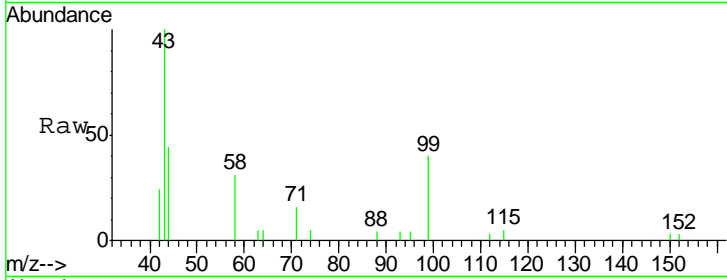




#5
 Phenol-d6
 Concen: 0.406 ng
 RT: 6.69 min Scan# 479
 Delta R.T. 0.01 min
 Lab File: BN009440.D
 Acq: 24 Jan 2020 13:39

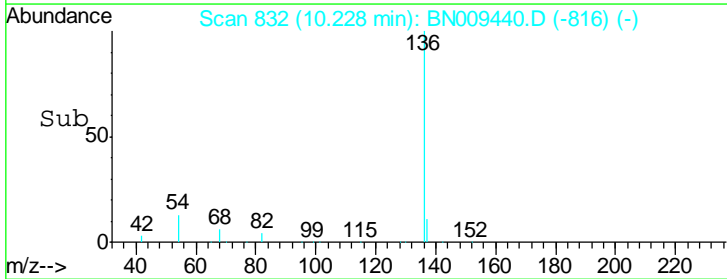
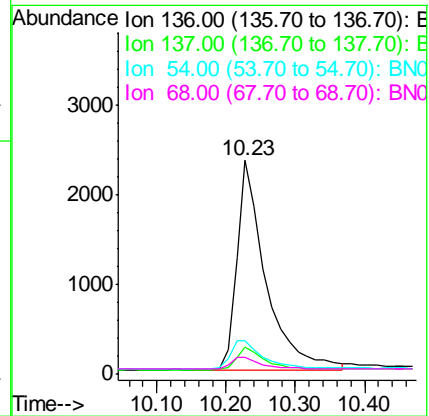
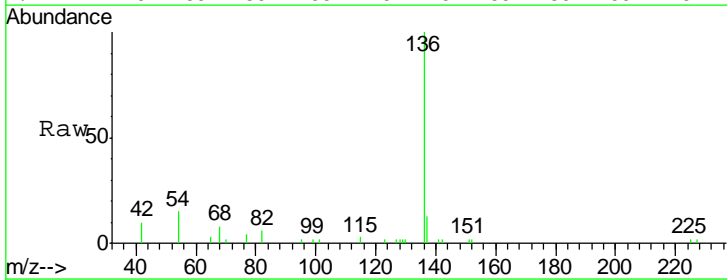
Instrument :
 BNA_N
 ClientSampled :

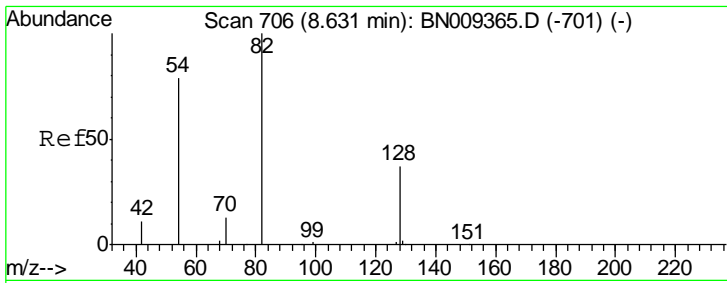
Tgt Ion	Resp	Lower	Upper
99	100		
42	28.1	27.6	41.4
71	39.8	33.0	49.6



#7
 Naphthalene-d8
 Concen: 0.400 ng
 RT: 10.23 min Scan# 832
 Delta R.T. -0.00 min
 Lab File: BN009440.D
 Acq: 24 Jan 2020 13:39

Tgt Ion	Resp	Lower	Upper
136	100		
137	12.8	10.3	15.5
54	15.4	12.6	19.0
68	8.1	6.5	9.7

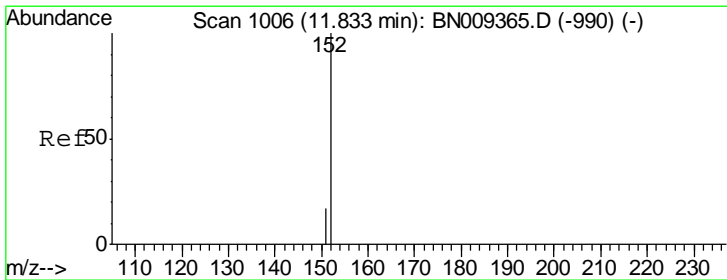
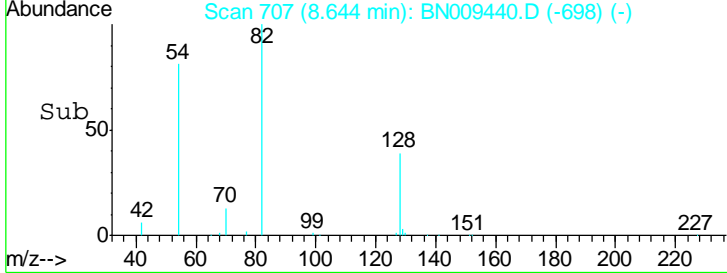
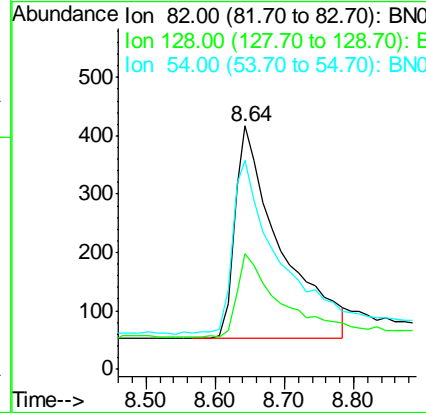
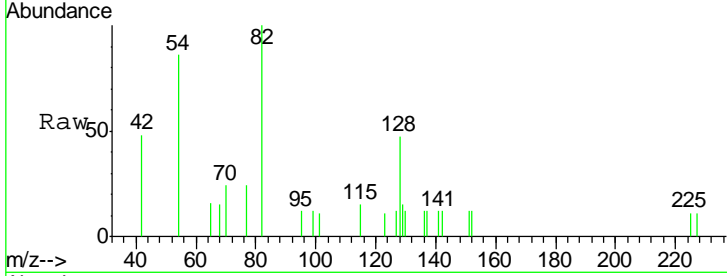




#8
 Nitrobenzene-d5
 Concen: 0.304 ng
 RT: 8.64 min Scan# 707
 Delta R.T. 0.01 min
 Lab File: BN009440.D
 Acq: 24 Jan 2020 13:39

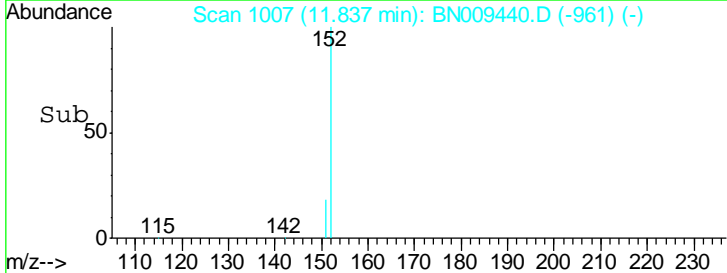
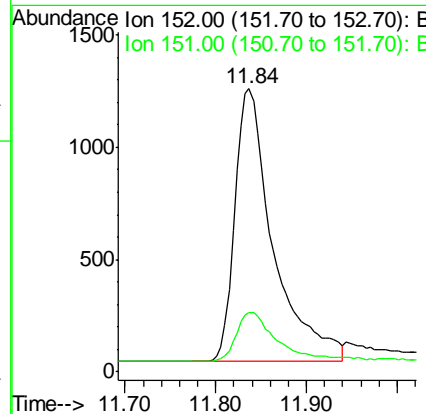
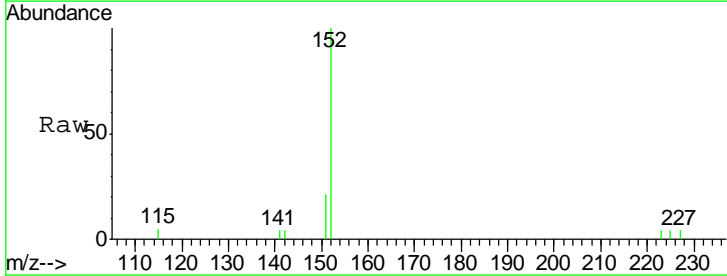
Instrument :
 BNA_N
 ClientSampled :

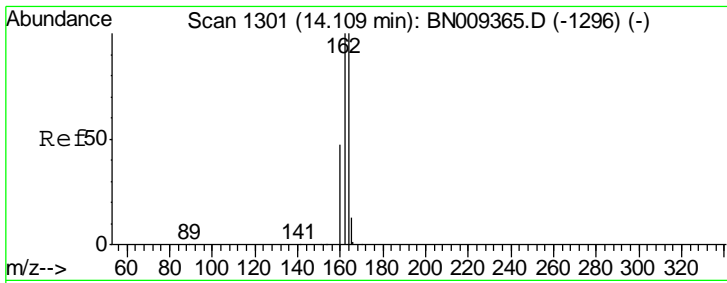
Tgt Ion	Resp	Lower	Upper
82	1652		
128	47.2	34.8	52.2
54	85.6	65.8	98.6



#11
 2-Methylnaphthalene-d10
 Concen: 0.271 ng
 RT: 11.84 min Scan# 1007
 Delta R.T. 0.00 min
 Lab File: BN009440.D
 Acq: 24 Jan 2020 13:39

Tgt Ion	Resp	Lower	Upper
152	3558		
151	19.7	14.8	22.2

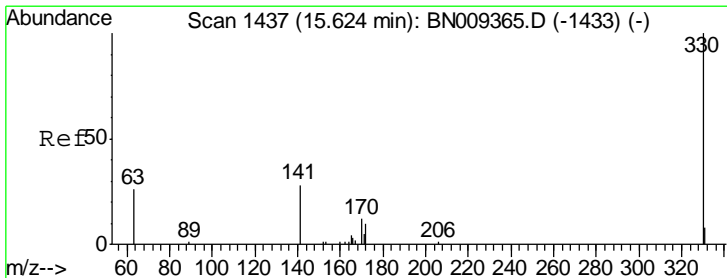
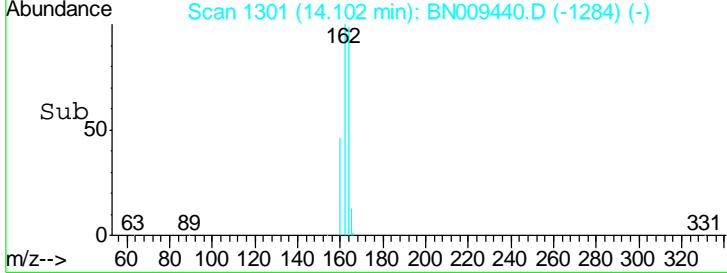
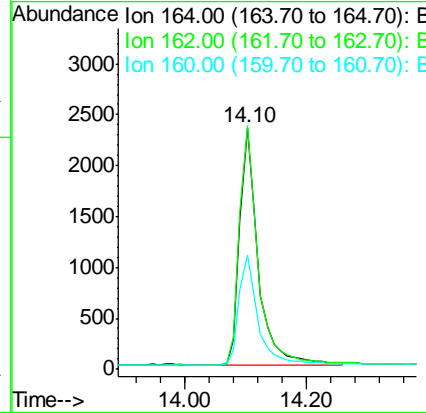
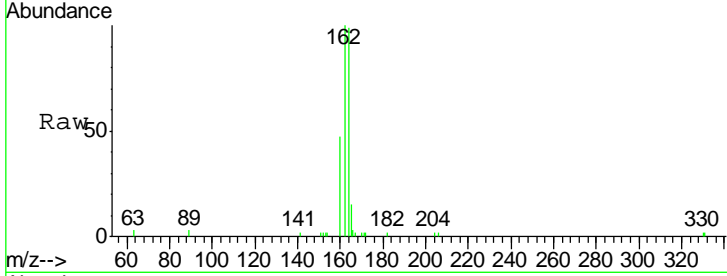




#13
 Acenaphthene-d10
 Concen: 0.400 ng
 RT: 14.10 min Scan# 1301
 Delta R.T. -0.01 min
 Lab File: BN009440.D
 Acq: 24 Jan 2020 13:39

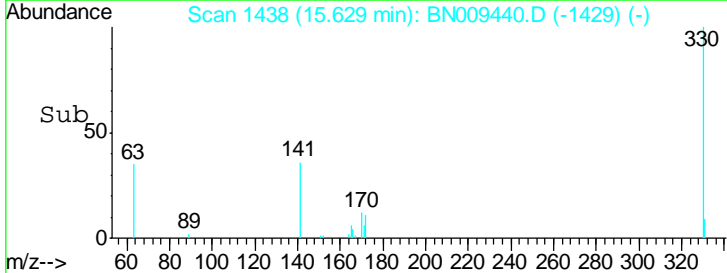
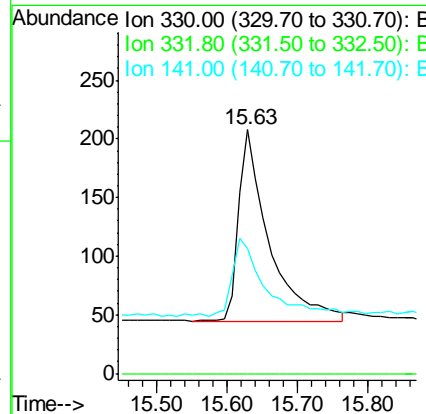
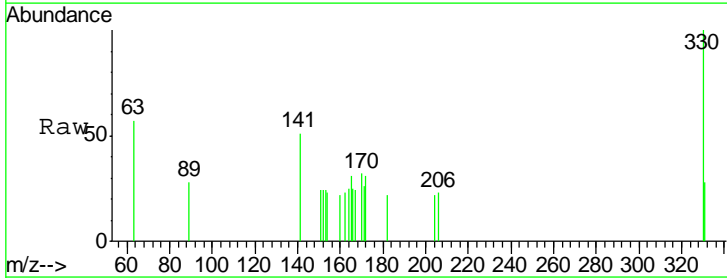
Instrument :
 BNA_N
 ClientSampled :

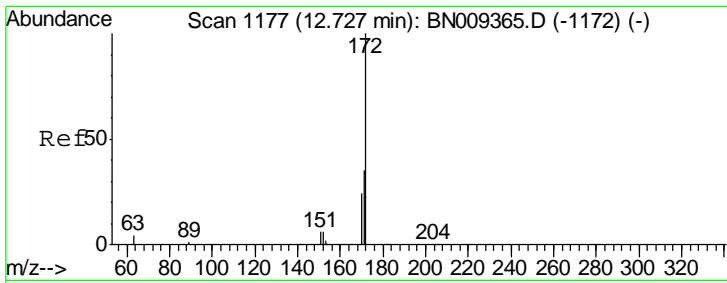
Tgt Ion	Resp	Lower	Upper
164	100		
162	100.8	79.8	119.6
160	47.4	38.4	57.6



#14
 2,4,6-Tribromophenol
 Concen: 0.271 ng
 RT: 15.63 min Scan# 1438
 Delta R.T. 0.00 min
 Lab File: BN009440.D
 Acq: 24 Jan 2020 13:39

Tgt Ion	Resp	Lower	Upper
330	100		
332	0.0	0.0	0.0
141	42.8	33.1	49.7

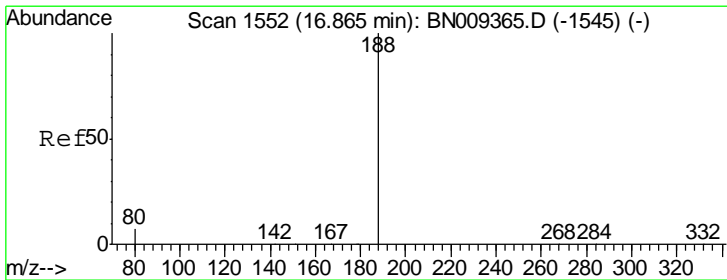
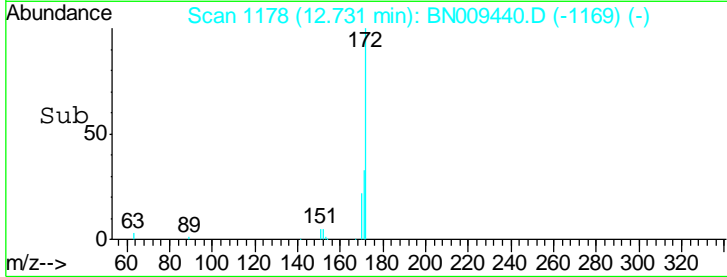
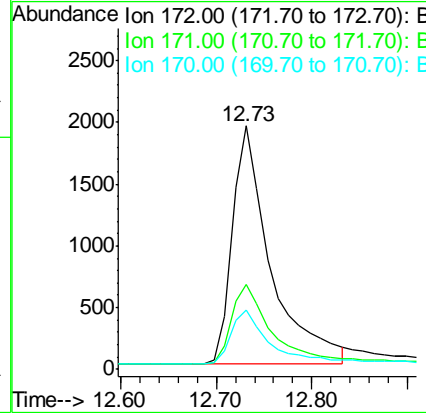
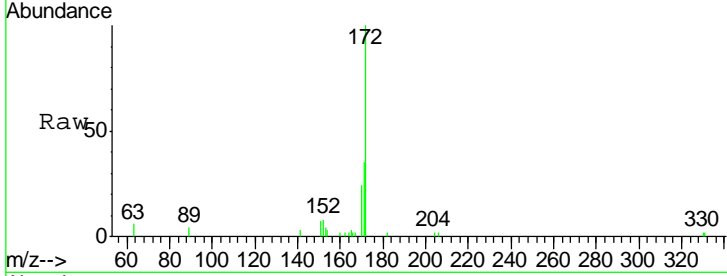




#15
 2-Fluorobiphenyl
 Concen: 0.295 ng
 RT: 12.73 min Scan# 1178
 Delta R.T. 0.00 min
 Lab File: BN009440.D
 Acq: 24 Jan 2020 13:39

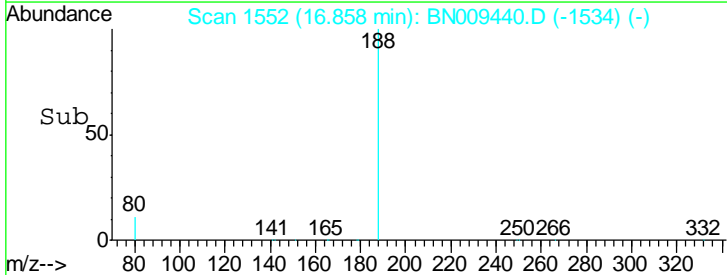
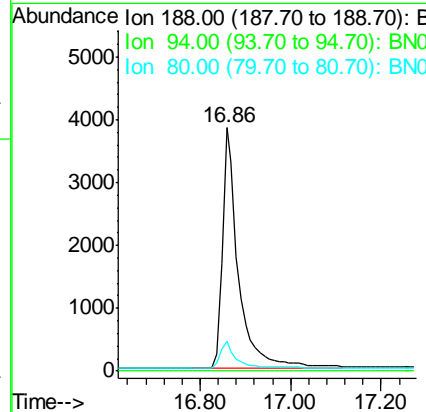
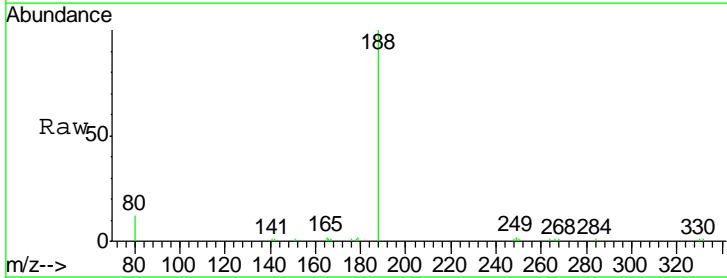
Instrument :
 BNA_N
 ClientSampled :

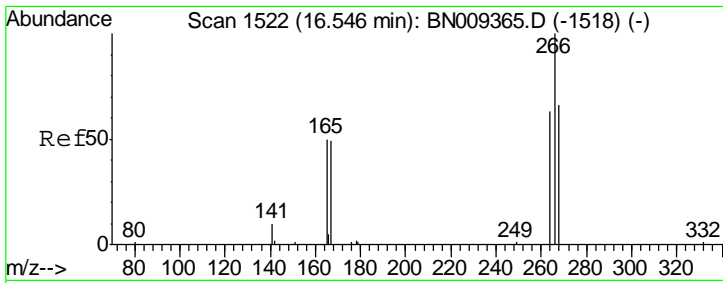
Tgt Ion	Resp	Lower	Upper
172	100		
171	34.8	29.5	44.3
170	24.2	20.7	31.1



#19
 Phenanthrene-d10
 Concen: 0.400 ng
 RT: 16.86 min Scan# 1552
 Delta R.T. -0.01 min
 Lab File: BN009440.D
 Acq: 24 Jan 2020 13:39

Tgt Ion	Resp	Lower	Upper
188	100		
94	0.0	0.0	0.0
80	12.1	6.6	10.0#

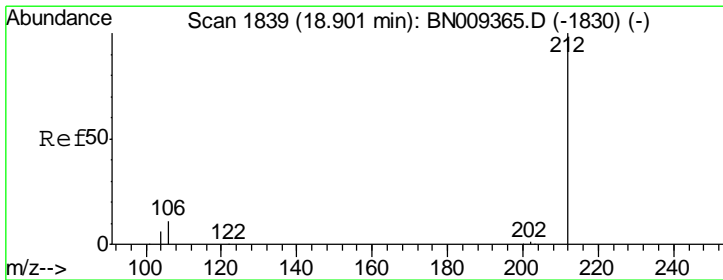
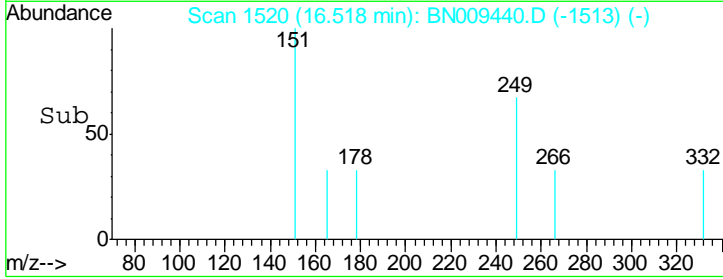
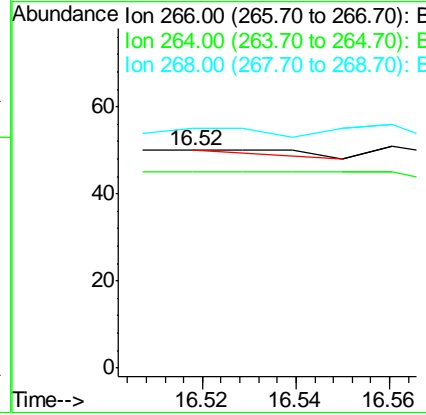
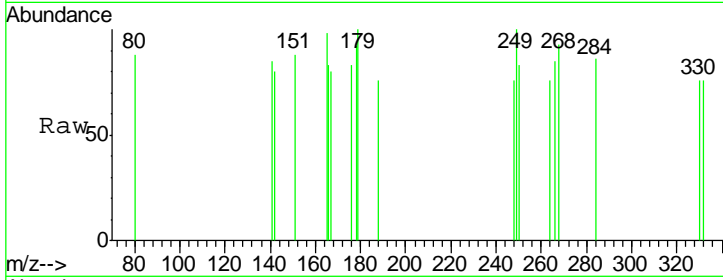




#22
 Pentachlorophenol
 Concen: 0.145 ng
 RT: 16.52 min Scan# 1520
 Delta R.T. -0.03 min
 Lab File: BN009440.D
 Acq: 24 Jan 2020 13:39

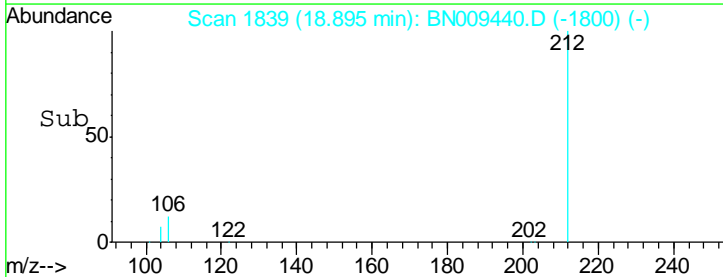
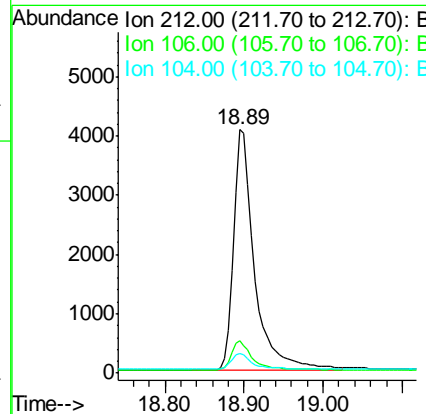
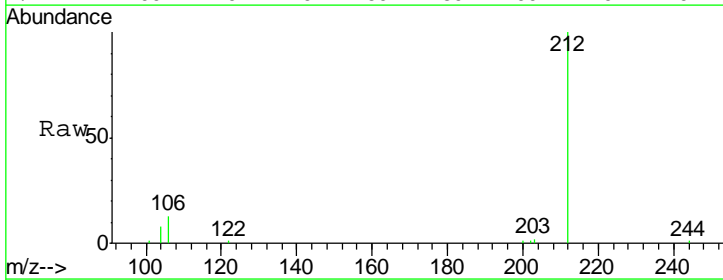
Instrument :
 BNA_N
 ClientSampled :

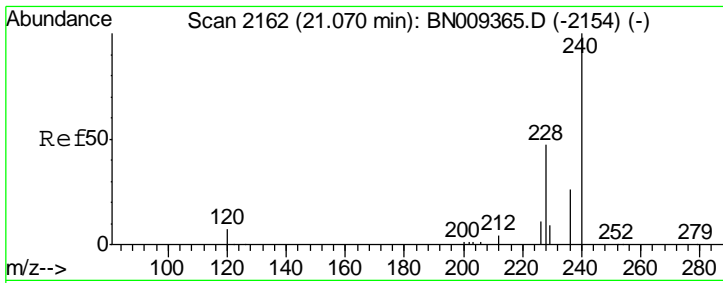
Tgt Ion	Resp	Lower	Upper
266	100		
264	90.0	57.8	86.6#
268	110.0	63.8	95.6#



#25
 Fluoranthene-d10
 Concen: 0.233 ng
 RT: 18.89 min Scan# 1839
 Delta R.T. -0.01 min
 Lab File: BN009440.D
 Acq: 24 Jan 2020 13:39

Tgt Ion	Resp	Lower	Upper
212	100		
106	12.0	9.2	13.8
104	6.6	5.4	8.0



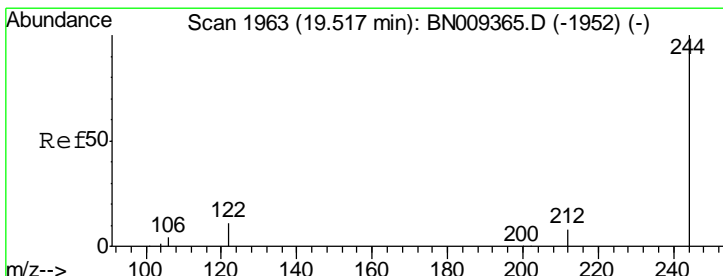
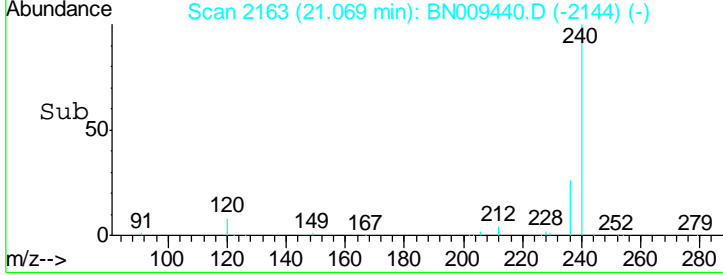
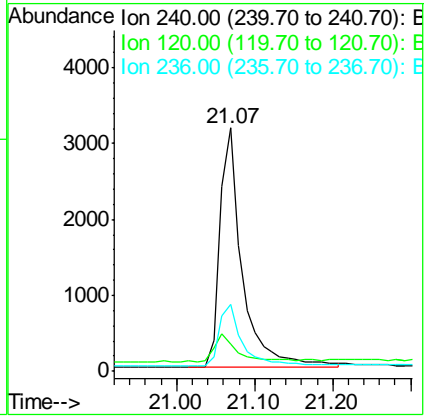
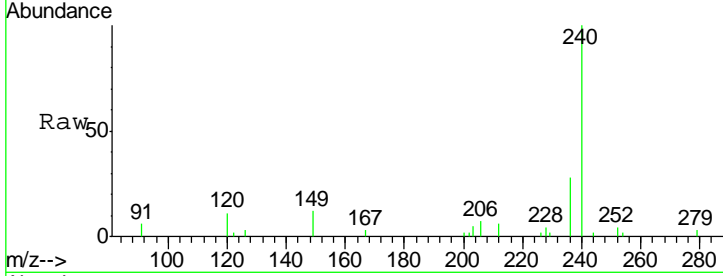


#27
 Chrysene-d12
 Concen: 0.400 ng
 RT: 21.07 min Scan# 2163
 Delta R.T. -0.00 min
 Lab File: BN009440.D
 Acq: 24 Jan 2020 13:39

Instrument :
 BNA_N
 ClientSampled :

Tgt Ion: 240 Resp: 6320

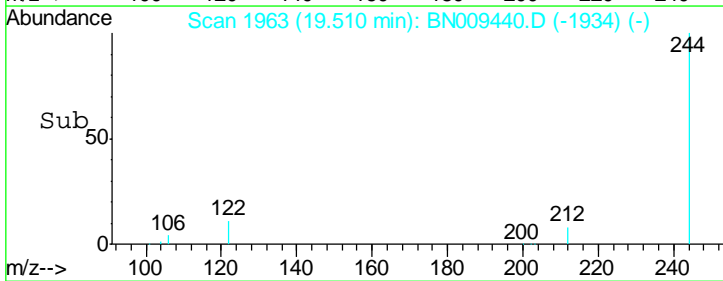
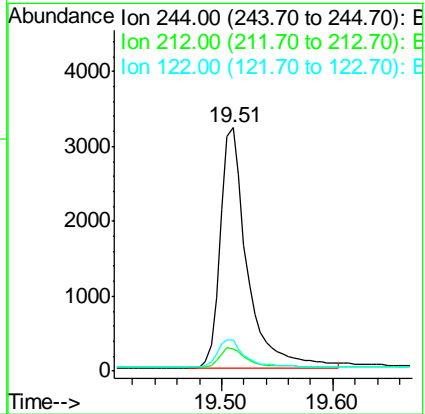
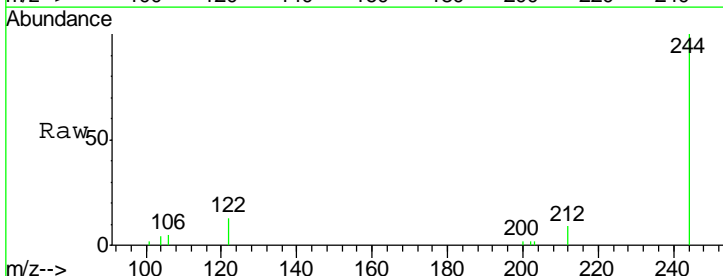
Ion	Ratio	Lower	Upper
240	100		
120	11.4	8.1	12.1
236	27.6	22.2	33.4

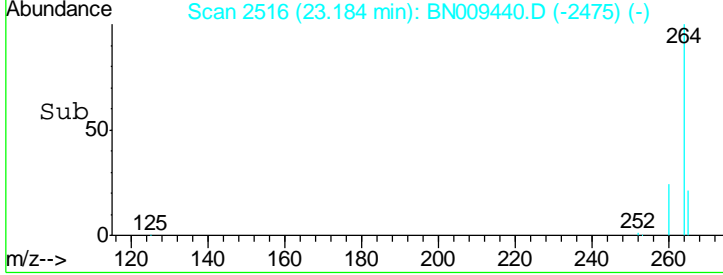
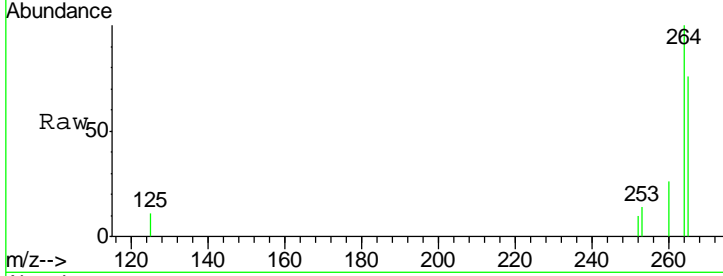
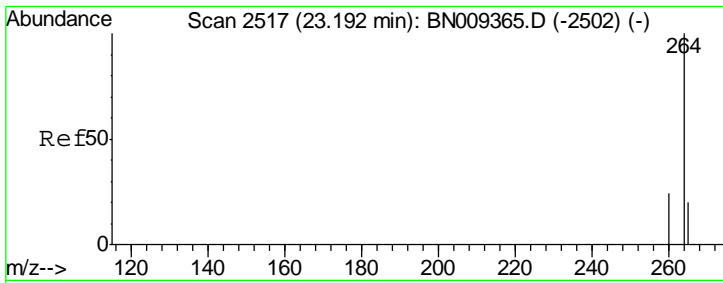


#29
 Terphenyl-d14
 Concen: 0.361 ng
 RT: 19.51 min Scan# 1963
 Delta R.T. -0.01 min
 Lab File: BN009440.D
 Acq: 24 Jan 2020 13:39

Tgt Ion: 244 Resp: 5401

Ion	Ratio	Lower	Upper
244	100		
212	9.2	7.5	11.3
122	12.5	9.8	14.6





#34
 Perylene-d12
 Concen: 0.400 ng
 RT: 23.18 min Scan# 2516
 Delta R.T. -0.01 min
 Lab File: BN009440.D
 Acq: 24 Jan 2020 13:39

Instrument :
 BNA_N
 ClientSampled :

Tot Ion: 264 Resp: 6476

Ion	Ratio	Lower	Upper
264	100		
260	25.6	20.1	30.1
265	76.4	68.2	102.4

