

Data Path : Z:\SVOASRV\HPCHEM1\BNA N\DATA\BN013020\  
 Data File : BN009493.D  
 Acq On : 31 Jan 2020 02:51  
 Operator : CG/JU  
 Sample : L1300-11  
 Misc :  
 ALS Vial : 18 Sample Multiplier: 1

Instrument :  
 BNA\_N  
 ClientSampled :  
 C5AR0

Manual Integrations  
 APPROVED

mohammad  
 2/3/2020 4:08:15 PM

Quant Time: Jan 31 04:19:56 2020  
 Quant Method : Z:\SVOASRV\HPCHEM1\BNA\_N\METHODS\SOM-EPA-BN012220MA.M  
 Quant Title : SVOA CALIBRATION  
 QLast Update : Fri Jan 31 00:47:12 2020  
 Response via : Initial Calibration

Internal Standards	R.T.	QIon	Response	Conc	Units	Dev(Min)
1) 1,4-Dichlorobenzene-d4	7.45	152	136081	20.00	ng/ul	-0.01
18) Naphthalene-d8	10.20	136	566435	20.00	ng/ul	-0.01
35) Acenaphthene-d10	14.09	164	361887	20.00	ng/ul	0.00
61) Phenanthrene-d10	16.85	188	768047	20.00	ng/ul	0.00
77) Chrysene-d12	21.05	240	717387	20.00	ng/ul	-0.01
85) Perylene-d12	23.16	264	776950	20.00	ng/ul	-0.01

## System Monitoring Compounds

3) 1,4-Dioxane-d8	3.09	96	3754	1.14	ng/uL	0.00
5) Phenol-d5	6.65	99	71296	5.91	ng/ul	0.00
7) Bis-(2-Chloroethyl)ether-d	6.81	67	56931	6.65	ng/ul	0.00
9) 2-Chlorophenol-d4	7.00	132	58760	6.67	ng/ul	0.00
13) 4-Methylphenol-d8	8.17	113	53146	5.53	ng/ul	0.00
19) Nitrobenzene-d5	8.60	128	27675	6.72	ng/ul	0.00
22) 2-Nitrophenol-d4	9.31	143	29094	6.73	ng/ul	0.00
26) 2,4-Dichlorophenol-d3	9.85	165	53026	6.19	ng/ul	0.00
29) 4-Chloroaniline-d4	10.36	131	68849	6.65	ng/ul	0.00
43) Dimethylphthalate-d6	13.52	166	203380	7.59	ng/ul	0.00
46) Acenaphthylene-d8	13.77	160	220364	6.93	ng/ul	-0.01
51) 4-Nitrophenol-d4	14.34	143	15487m	3.11	ng/ul	0.02
57) Fluorene-d10	15.09	176	175775	7.48	ng/ul	0.00
62) 4,6-Dinitro-2-methylphenol	15.23	200	17524	3.77	ng/ul	0.00
70) Anthracene-d10	16.94	188	260523	7.33	ng/ul	0.00
78) Pyrene-d10	19.25	212	313576	8.12	ng/ul	0.00
89) Benzo(a)pyrene-d12	23.03	264	306731	7.82	ng/ul	-0.01

## Target Compounds

Target Compounds	R.T.	QIon	Response	Conc	Units	Ovalue
6) Phenol	6.68	94	12958	1.025	ng/ul	91
44) Dimethylphthalate	13.56	163	45826	1.662	ng/ul	99
69) Phenanthrene	16.89	178	133046	3.070	ng/ul	98
76) Fluoranthene	18.91	202	305140	6.142	ng/ul	98
79) Pyrene	19.27	202	254125	4.892	ng/ul	98
82) Benzo(a)anthracene	21.03	228	123889	2.536	ng/ul	98
84) Chrysene	21.09	228	146796	3.085	ng/ul	98
87) Benzo(b)fluoranthene	22.54	252	166378	3.387	ng/ul	97
88) Benzo(k)fluoranthene	22.58	252	56125m	1.162	ng/ul	
90) Benzo(a)pyrene	23.07	252	106279	2.410	ng/ul	97
91) Indeno(1,2,3-cd)pyrene	25.23	276	70095	1.312	ng/ul#	90
93) Benzo(g,h,i)perylene	25.85	276	63205	1.422	ng/ul	97

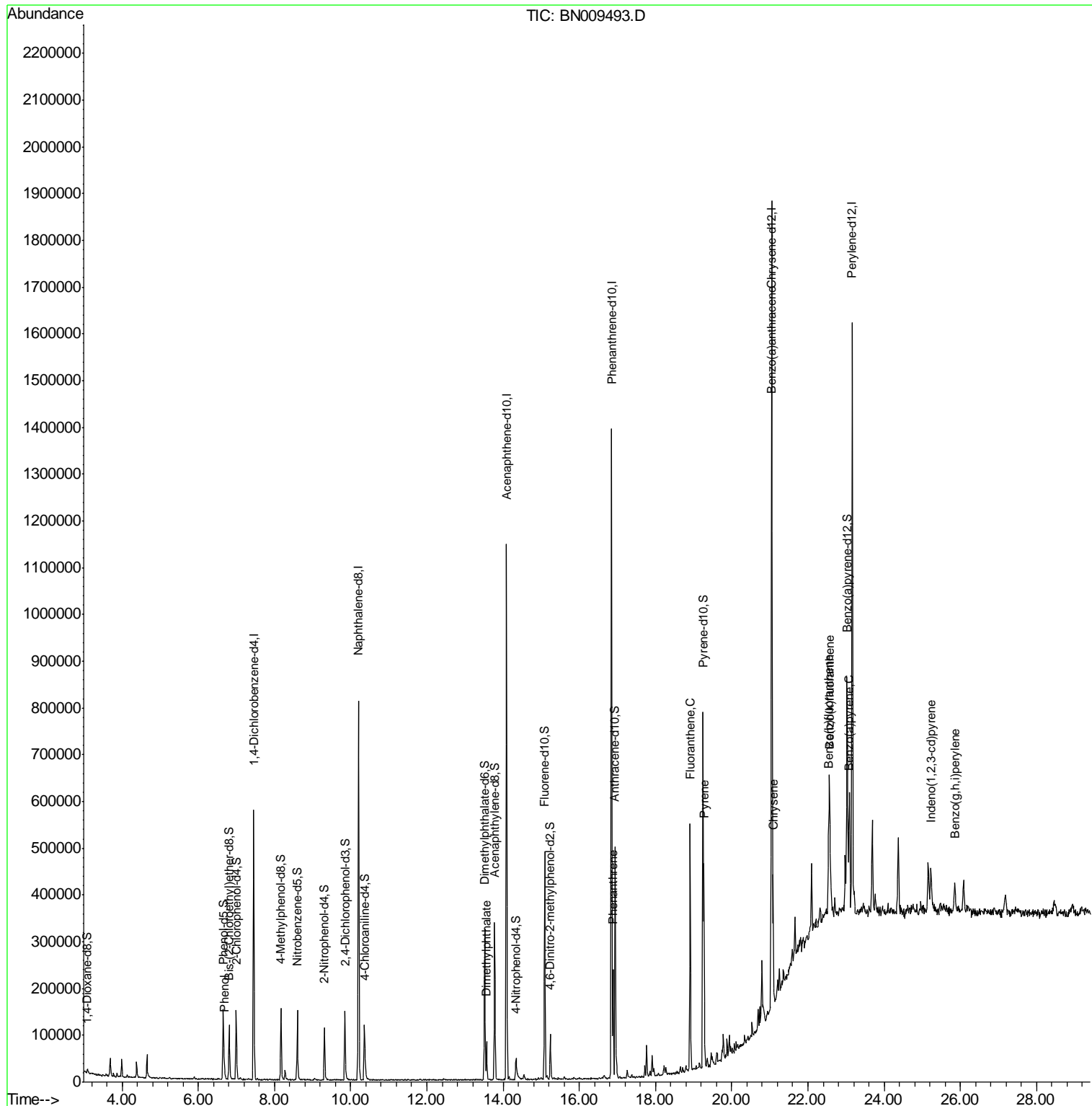
(#) = qualifier out of range (m) = manual integration (+) = signals summed

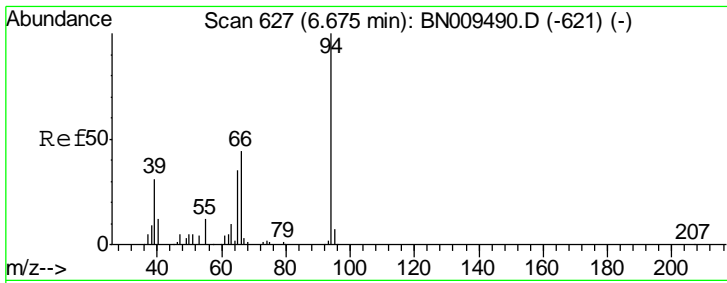
Data Path : Z:\SVOASRV\HPCHEM1\BNA N\DATA\BN013020\  
 Data File : BN009493.D  
 Acq On : 31 Jan 2020 02:51  
 Operator : CG/JU  
 Sample : L1300-11  
 Misc :  
 ALS Vial : 18 Sample Multiplier: 1

**Instrument :**  
 BNA\_N  
**Client Sampled :**  
 C5AR0

**Manual Integrations**  
**APPROVED**  
 mohammad  
 2/3/2020 4:08:15 PM

Quant Time: Jan 31 04:19:56 2020  
 Quant Method : Z:\SVOASRV\HPCHEM1\BNA\_N\METHODS\SOM-EPA-BN012220MA.M  
 Quant Title : SVOA CALIBRATION  
 QLast Update : Fri Jan 31 00:47:12 2020  
 Response via : Initial Calibration





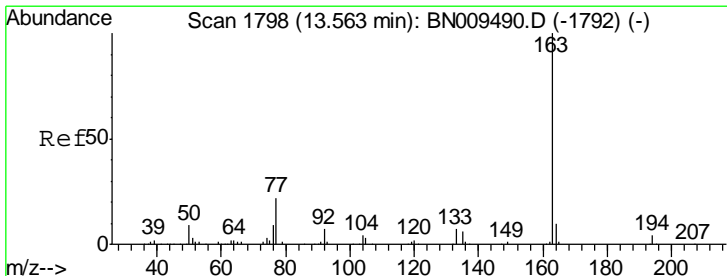
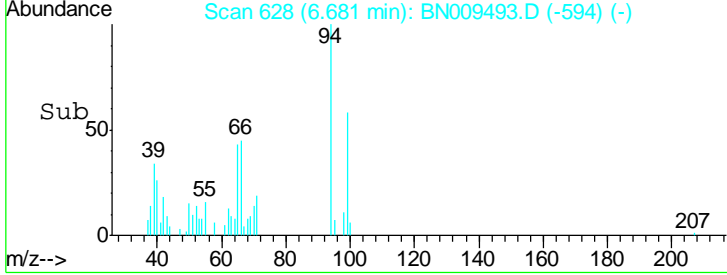
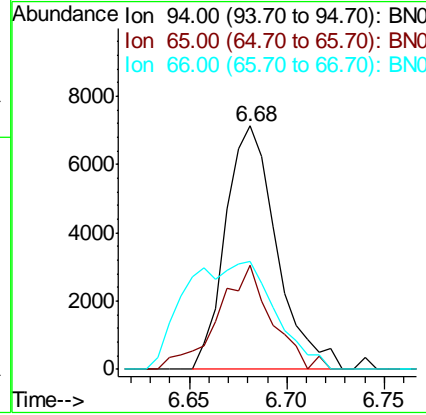
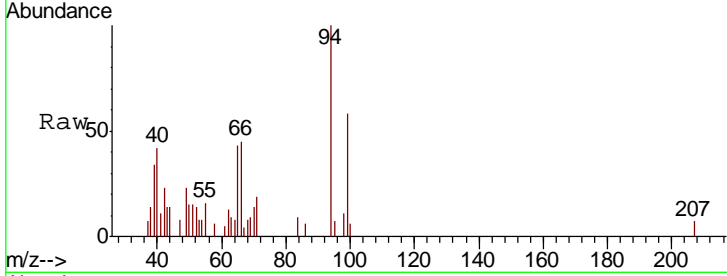
#6  
 Phenol  
 Concen: 1.025 ng/ul  
 RT: 6.68 min Scan# 628  
 Delta R.T. -0.00 min  
 Lab File: BN009493.D  
 Acq: 31 Jan 2020 02:51

**Instrument :**  
 BNA\_N  
**ClientSampled :**  
 C5AR0

Tgt Ion	Resp	Lower	Upper
94	12958		
65	42.6	29.4	44.0
66	44.6	39.8	59.8

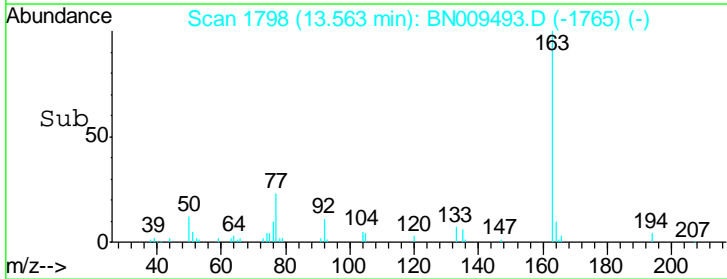
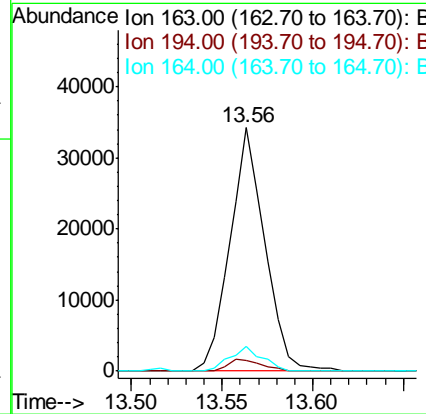
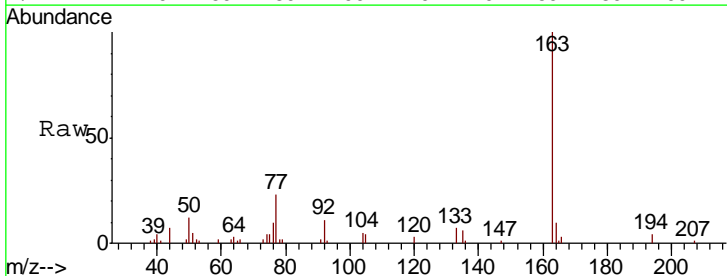
**Manual Integrations**  
**APPROVED**

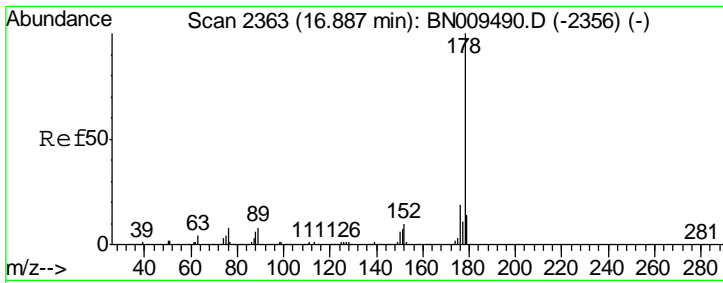
mohammad  
 2/3/2020 4:08:15 PM



#44  
 Dimethylphthalate  
 Concen: 1.662 ng/ul  
 RT: 13.56 min Scan# 1798  
 Delta R.T. -0.01 min  
 Lab File: BN009493.D  
 Acq: 31 Jan 2020 02:51

Tgt Ion	Resp	Lower	Upper
163	45826		
194	4.2	3.1	4.7
164	10.0	8.3	12.5





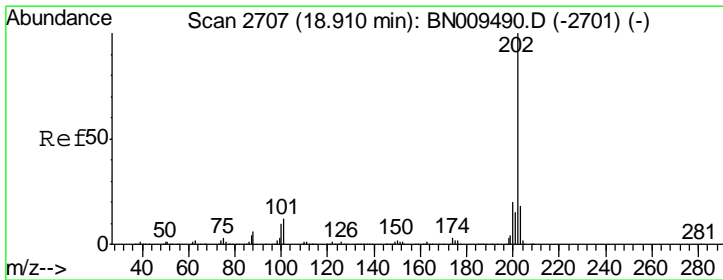
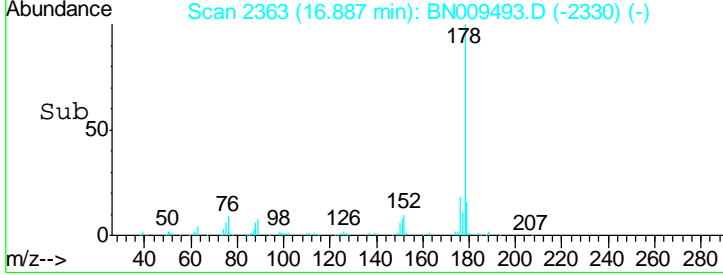
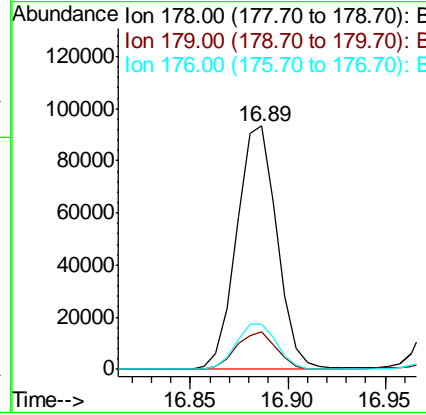
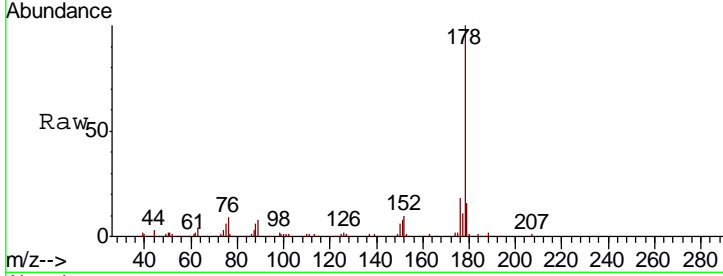
#69  
 Phenanthrene  
 Concen: 3.070 ng/ul  
 RT: 16.89 min Scan# 2363  
 Delta R.T. -0.01 min  
 Lab File: BN009493.D  
 Acq: 31 Jan 2020 02:51

**Instrument :**  
 BNA\_N  
**ClientSampled :**  
 C5AR0

Tgt Ion	Resp	Lower	Upper
178	133046		
179	15.5	13.3	19.9
176	18.3	15.5	23.3

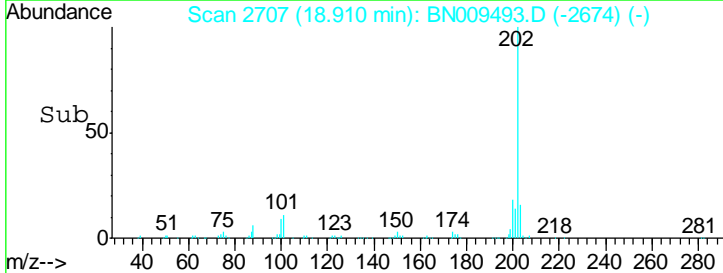
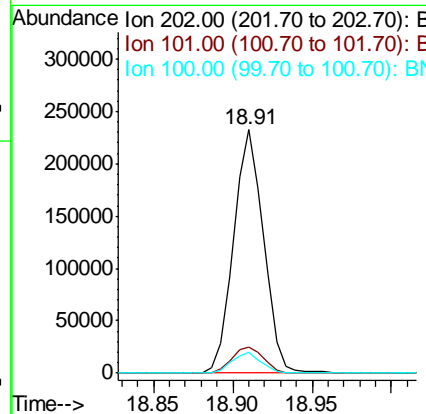
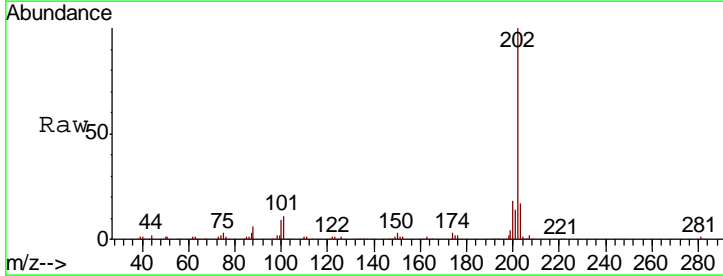
**Manual Integrations**  
**APPROVED**

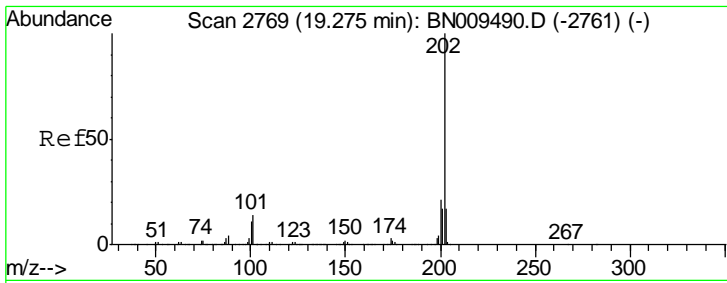
mohammad  
 2/3/2020 4:08:15 PM



#76  
 Fluoranthene  
 Concen: 6.142 ng/ul  
 RT: 18.91 min Scan# 2707  
 Delta R.T. -0.01 min  
 Lab File: BN009493.D  
 Acq: 31 Jan 2020 02:51

Tgt Ion	Resp	Lower	Upper
202	305140		
101	10.8	9.7	14.5
100	8.8	7.1	10.7





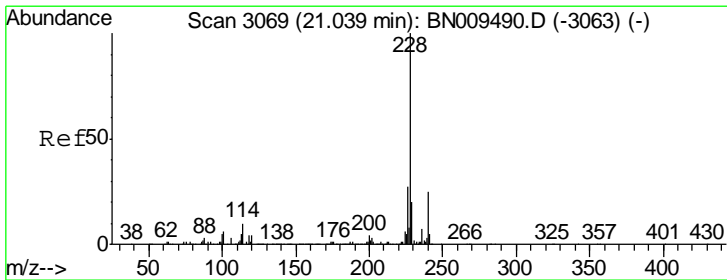
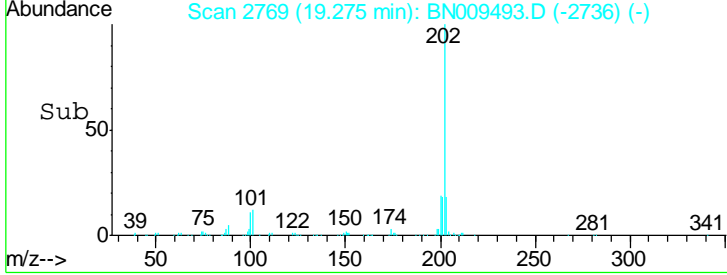
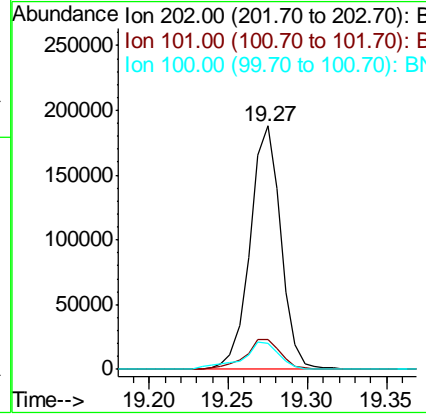
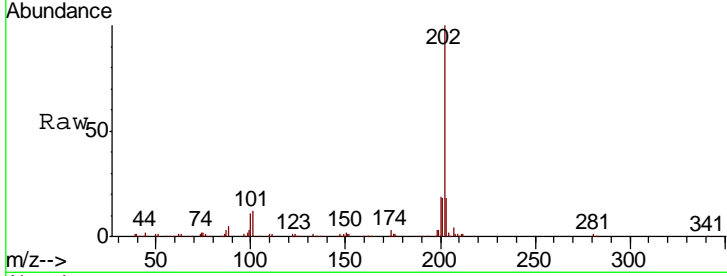
#79  
 Pyrene  
 Concen: 4.892 ng/ul  
 RT: 19.27 min Scan# 2769  
 Delta R.T. -0.01 min  
 Lab File: BN009493.D  
 Acq: 31 Jan 2020 02:51

**Instrument :**  
 BNA\_N  
**ClientSampled :**  
 C5AR0

Tgt Ion	Ratio	Lower	Upper
202	100		
101	12.3	10.9	16.3
100	10.7	8.6	12.8

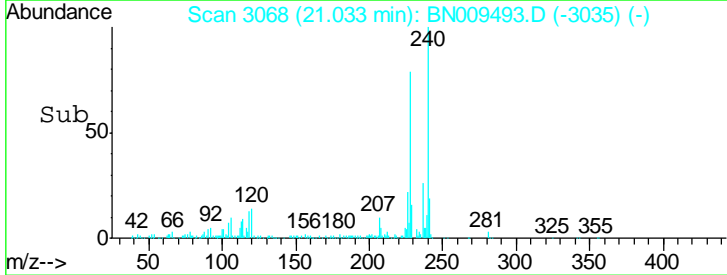
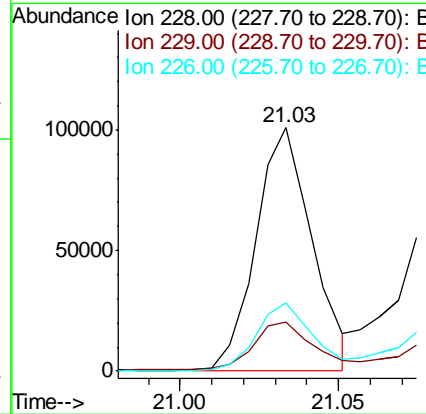
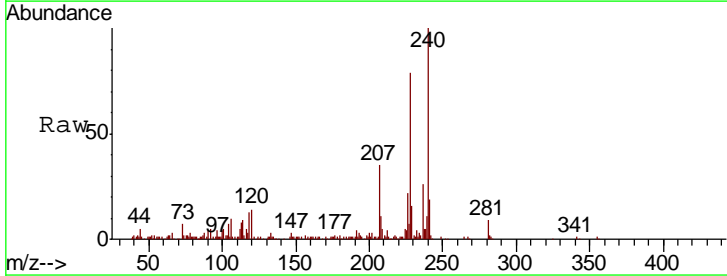
**Manual Integrations**  
**APPROVED**

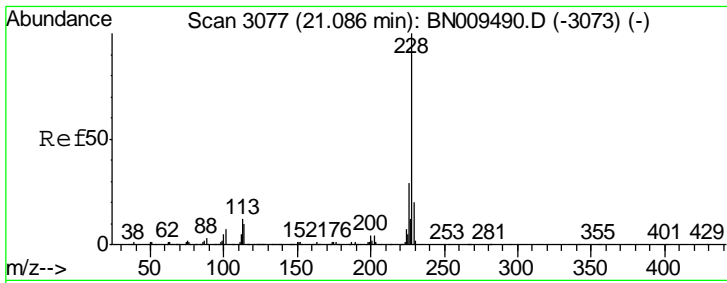
mohammad  
 2/3/2020 4:08:15 PM



#82  
 Benzo(a)anthracene  
 Concen: 2.536 ng/ul  
 RT: 21.03 min Scan# 3068  
 Delta R.T. -0.01 min  
 Lab File: BN009493.D  
 Acq: 31 Jan 2020 02:51

Tgt Ion	Ratio	Lower	Upper
228	100		
229	20.2	15.9	23.9
226	28.0	20.9	31.3



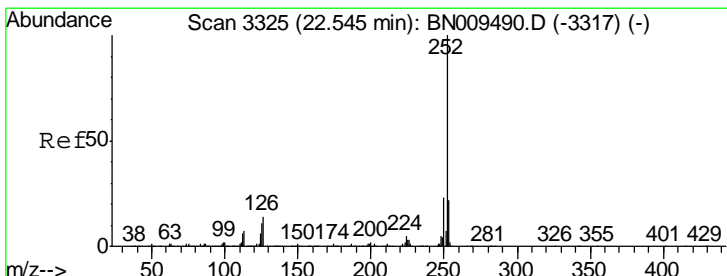
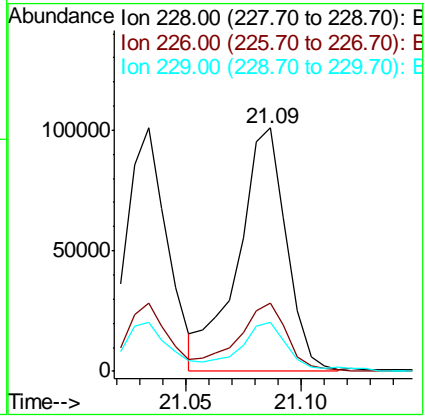
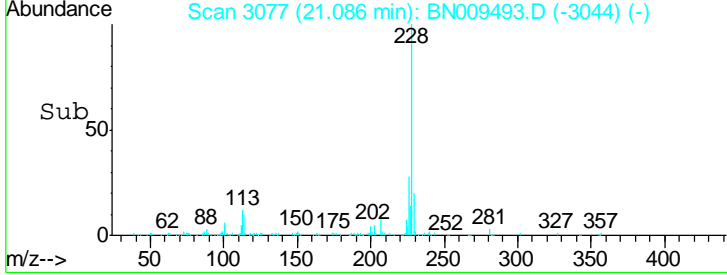
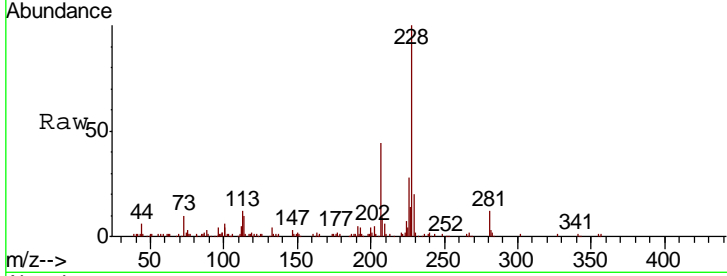


#84  
 Chrysene  
 Concen: 3.085 ng/ul  
 RT: 21.09 min Scan# 3077  
 Delta R.T. -0.01 min  
 Lab File: BN009493.D  
 Acq: 31 Jan 2020 02:51

**Instrument :**  
 BNA\_N  
**ClientSampled :**  
 C5AR0

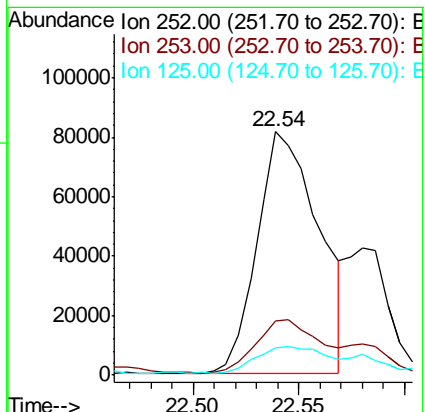
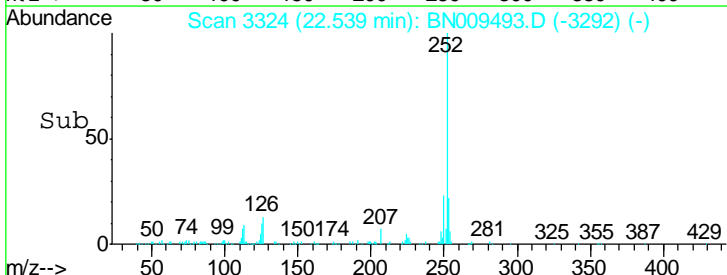
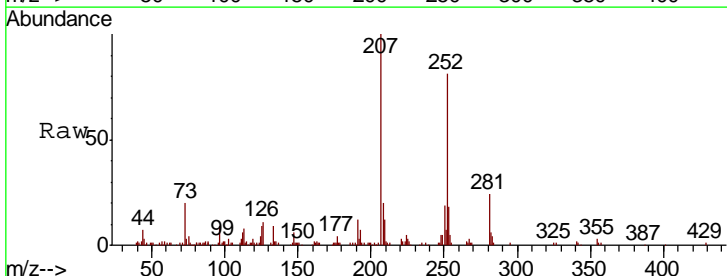
Tgt Ion	Resp	Lower	Upper
228	100		
226	27.9	22.9	34.3
229	20.1	15.4	23.0

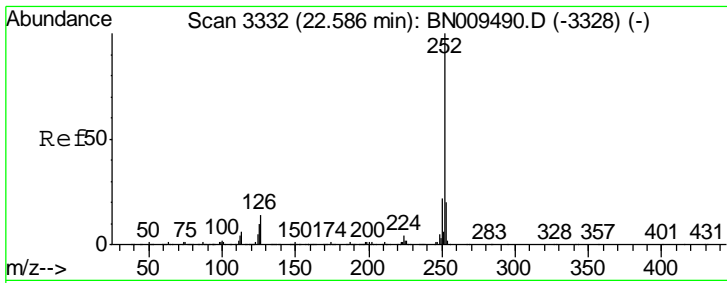
**Manual Integrations**  
**APPROVED**  
 mohammad  
 2/3/2020 4:08:15 PM



#87  
 Benzo(b)fluoranthene  
 Concen: 3.387 ng/ul  
 RT: 22.54 min Scan# 3324  
 Delta R.T. -0.01 min  
 Lab File: BN009493.D  
 Acq: 31 Jan 2020 02:51

Tgt Ion	Resp	Lower	Upper
252	100		
253	22.5	16.5	24.7
125	11.0	8.2	12.2



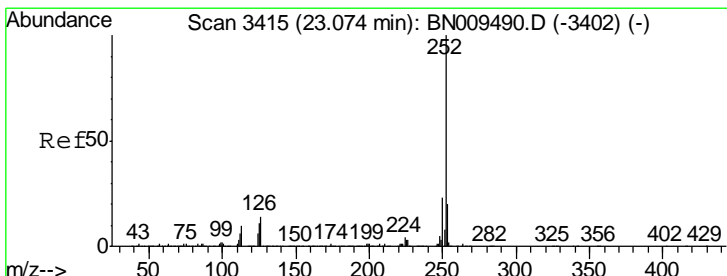
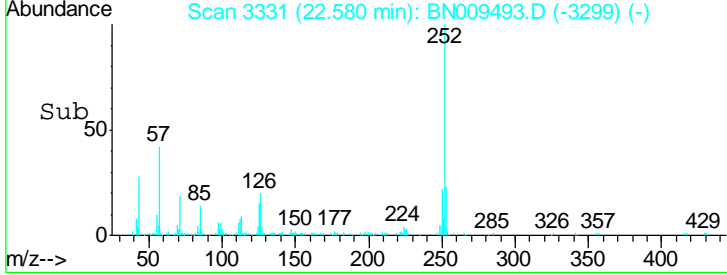
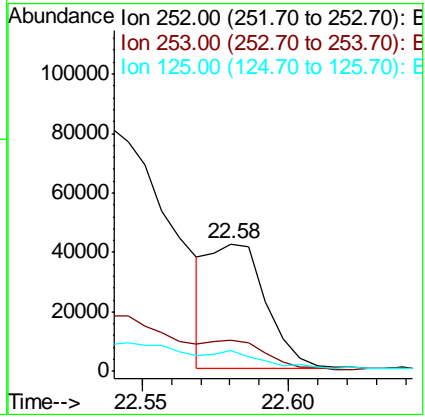
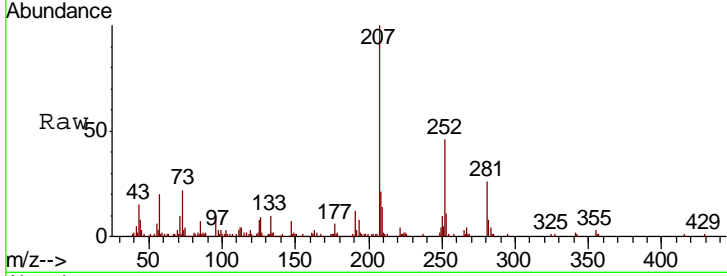


#88  
 Benzo(k)fluoranthene  
 Concen: 1.162 ng/ul m  
 RT: 22.58 min Scan# 3331  
 Delta R.T. -0.01 min  
 Lab File: BN009493.D  
 Acq: 31 Jan 2020 02:51

**Instrument :**  
 BNA\_N  
**ClientSampled :**  
 C5AR0

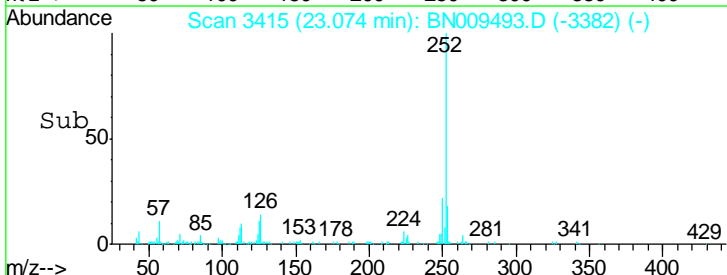
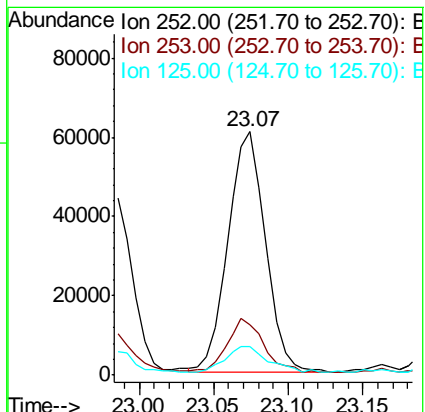
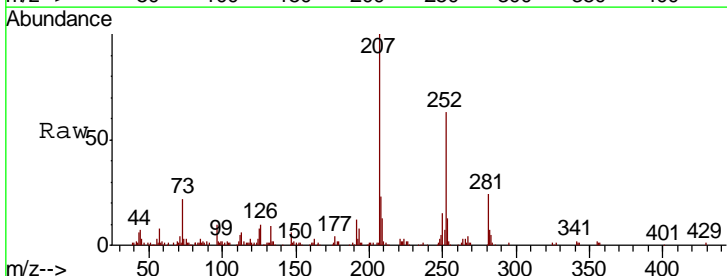
Tgt Ion	Resp	Lower	Upper
252	56125		
253	100	17.0	25.4
125	16.6	7.8	11.8#

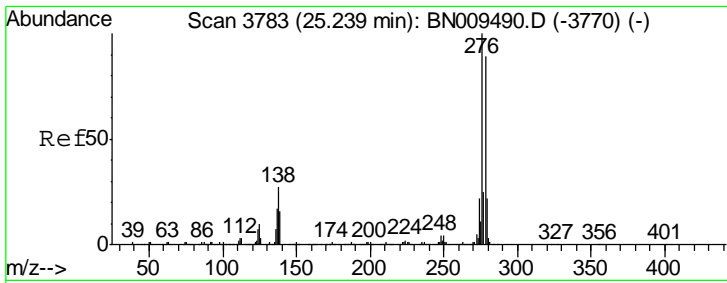
**Manual Integrations**  
**APPROVED**  
 mohammad  
 2/3/2020 4:08:15 PM



#90  
 Benzo(a)pyrene  
 Concen: 2.410 ng/ul  
 RT: 23.07 min Scan# 3415  
 Delta R.T. -0.01 min  
 Lab File: BN009493.D  
 Acq: 31 Jan 2020 02:51

Tgt Ion	Resp	Lower	Upper
252	106279		
253	100	18.0	27.0
125	12.0	9.8	14.6



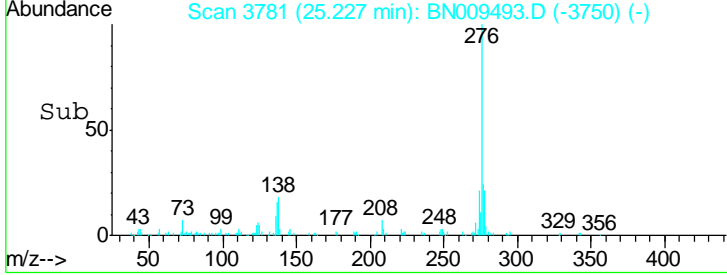
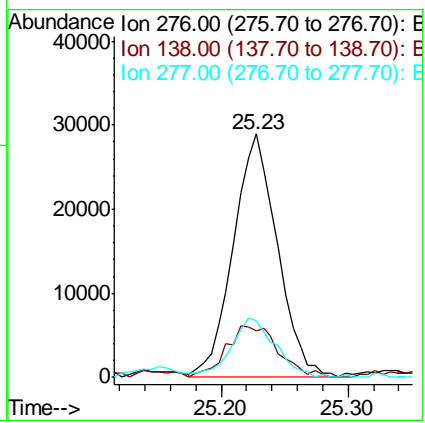
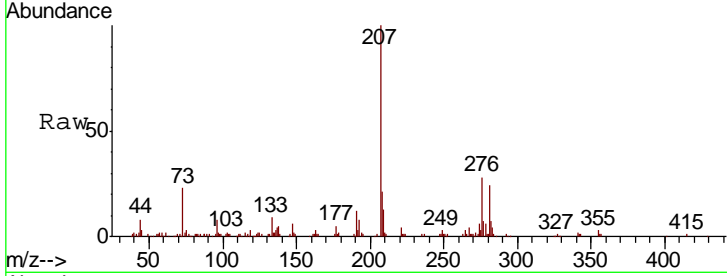


#91  
 Indeno(1,2,3-cd)pyrene  
 Concen: 1.312 ng/ul  
 RT: 25.23 min Scan# 3781  
 Delta R.T. -0.02 min  
 Lab File: BN009493.D  
 Acq: 31 Jan 2020 02:51

**Instrument :**  
 BNA\_N  
**ClientSampled :**  
 C5AR0

Tgt Ion	Resp	Lower	Upper
276	70095		
138	19.0	21.4	32.0#
277	23.5	20.4	30.6

**Manual Integrations**  
**APPROVED**  
 mohammad  
 2/3/2020 4:08:15 PM



#93  
 Benzo(g,h,i)perylene  
 Concen: 1.422 ng/ul  
 RT: 25.85 min Scan# 3887  
 Delta R.T. -0.02 min  
 Lab File: BN009493.D  
 Acq: 31 Jan 2020 02:51

Tgt Ion	Resp	Lower	Upper
276	63205		
138	20.7	16.6	24.8
277	25.9	18.7	28.1

