

Data Path : Z:\SVOASRV\HPCHEM1\BNA_N\DATA\BN013020\
 Data File : BN009480.D
 Acq On : 30 Jan 2020 18:30
 Operator : CG/JU
 Sample : L1301-02
 Misc :
 ALS Vial : 6 Sample Multiplier: 1

Instrument :
 BNA_N
 ClientSampleId :
 BFM07

Integration Parameters: LSCINT.P

Integrator: RTE
 Smoothing : OFF
 Sampling : 1
 Start Thrs: 0.2
 Stop Thrs : 0

Filtering: 5
 Min Area: 0.1 % of largest Peak
 Max Peaks: 100
 Peak Location: TOP

If leading or trailing edge < 100 prefer < Baseline drop else tangent >
 Peak separation: 5

Method : Z:\SVOASRV\HPCHEM1\BNA_N\METHODS\SOM-EPA-BN012220MA.M
 Title : SVOA CALIBRATION

Signal : TIC

peak #	R.T. min	first scan	max scan	last scan	PK TY	peak height	corr. area	corr. % max.	% of total
1	3.087	13	17	23	rBV	38197	49471	1.08%	0.092%
2	3.699	116	121	128	rVB8	7445	14536	0.32%	0.027%
3	3.775	129	134	141	rVB	85838	113019	2.46%	0.211%
4	5.034	344	348	352	rBV2	11990	15851	0.34%	0.030%
5	5.163	366	370	378	rVB2	26718	54502	1.19%	0.102%
6	5.516	423	430	434	rBV4	21096	46056	1.00%	0.086%
7	6.651	615	623	637	rBV2	191815	442223	9.62%	0.824%
8	6.810	644	650	659	rBV	659078	1022634	22.25%	1.907%
9	6.998	675	682	692	rVV	732420	1133424	24.66%	2.113%
10	7.110	696	701	708	rVB6	14098	27049	0.59%	0.050%
11	7.181	708	713	722	rBV3	13888	25409	0.55%	0.047%
12	7.457	752	760	769	rBV	617903	969259	21.09%	1.807%
13	7.534	771	773	777	rVV5	6689	9966	0.22%	0.019%
14	7.822	816	822	829	rVB	48515	74391	1.62%	0.139%
15	7.904	831	836	843	rVV	54047	86020	1.87%	0.160%
16	7.981	843	849	857	rVB	116352	193457	4.21%	0.361%
17	8.163	875	880	887	rBV	561763	889200	19.35%	1.658%
18	8.234	887	892	899	rVV	75602	140278	3.05%	0.262%
19	8.281	899	900	906	rVB3	8352	10919	0.24%	0.020%
20	8.598	947	954	964	rBV	912744	1500134	32.64%	2.797%
21	8.869	995	1000	1003	rBV5	16369	26275	0.57%	0.049%
22	8.910	1003	1007	1013	rVB6	6450	15151	0.33%	0.028%
23	9.304	1066	1074	1084	rBV	742252	1254946	27.31%	2.340%
24	9.410	1088	1092	1096	rVV4	23062	41413	0.90%	0.077%
25	9.445	1096	1098	1103	rVB3	23953	32151	0.70%	0.060%
26	9.722	1137	1145	1154	rVV3	50397	103485	2.25%	0.193%
27	9.840	1158	1165	1178	rBV	1037267	1759946	38.30%	3.281%
28	10.116	1206	1212	1215	rBV4	7977	12362	0.27%	0.023%
29	10.204	1221	1227	1232	rBV	861332	1454964	31.66%	2.713%
30	10.257	1232	1236	1247	rVB	826608	1317478	28.67%	2.456%
31	10.369	1247	1255	1263	rBV3	69107	131109	2.85%	0.244%
32	11.057	1370	1372	1378	rVB5	7850	11685	0.25%	0.022%
33	11.245	1399	1404	1408	rBV5	5917	10181	0.22%	0.019%
34	11.610	1461	1466	1471	rBV3	23164	44782	0.97%	0.083%

Data Path : Z:\SVOASRV\HPCHEM1\BNA_N\DATA\BN013020\
 Data File : BN009480.D
 Acq On : 30 Jan 2020 18:30
 Operator : CG/JU
 Sample : L1301-02
 Misc :
 ALS Vial : 6 Sample Multiplier: 1

Instrument :
 BNA_N
 ClientSampleId :
 BFM07

Integration Parameters: LSCINT.P

Integrator: RTE
 Smoothing : OFF Filtering: 5
 Sampling : 1 Min Area: 0.1 % of largest Peak
 Start Thrs: 0.2 Max Peaks: 100
 Stop Thrs : 0 Peak Location: TOP

If leading or trailing edge < 100 prefer < Baseline drop else tangent >
 Peak separation: 5

Method : Z:\SVOASRV\HPCHEM1\BNA_N\METHODS\SOM-EPA-BN012220MA.M
 Title : SVOA CALIBRATION

35	11.663	1471	1475	1480	rVV4	10902	17460	0.38%	0.033%
36	11.798	1495	1498	1504	rVB3	17330	29312	0.64%	0.055%
37	11.881	1504	1512	1518	rBV2	43533	69303	1.51%	0.129%
38	12.104	1544	1550	1556	rVV	38785	62535	1.36%	0.117%
39	12.933	1683	1691	1699	rBV4	28101	63514	1.38%	0.118%
40	13.010	1699	1704	1708	rBV5	8964	15216	0.33%	0.028%
41	13.404	1764	1771	1772	rBV5	9952	13697	0.30%	0.026%
42	13.516	1784	1790	1795	rVV	1987305	2640182	57.45%	4.922%
43	13.563	1795	1798	1803	rVV	101403	142931	3.11%	0.266%
44	13.604	1803	1805	1808	rVV4	10351	12169	0.26%	0.023%
45	13.651	1808	1813	1817	rVB6	6506	10590	0.23%	0.020%
46	13.781	1828	1835	1848	rBV	2201796	3246898	70.65%	6.053%
47	14.028	1872	1877	1881	rBV	49145	59495	1.29%	0.111%
48	14.092	1881	1888	1895	rVV	1327821	1843662	40.12%	3.437%
49	14.151	1895	1898	1904	rVB	45369	67321	1.46%	0.126%
50	14.328	1917	1928	1935	rBV3	128481	280146	6.10%	0.522%
51	14.492	1949	1956	1961	rBV	33165	55580	1.21%	0.104%
52	14.610	1969	1976	1980	rBV5	16618	30399	0.66%	0.057%
53	14.651	1980	1983	1985	rBV3	11247	14825	0.32%	0.028%
54	14.686	1985	1989	1993	rVB	47165	59177	1.29%	0.110%
55	14.839	2010	2015	2019	rBV5	10624	16662	0.36%	0.031%
56	14.986	2036	2040	2044	rVB	71571	89491	1.95%	0.167%
57	15.092	2052	2058	2065	rBV	2741745	3813794	82.99%	7.110%
58	15.151	2065	2068	2074	rVB	37848	49117	1.07%	0.092%
59	15.233	2074	2082	2095	rBV	1035895	1469873	31.98%	2.740%
60	15.333	2095	2099	2103	rVB3	33470	40226	0.88%	0.075%
61	15.398	2103	2110	2114	rVB2	25970	44867	0.98%	0.084%
62	15.545	2131	2135	2139	rBV6	13856	17195	0.37%	0.032%
63	15.610	2139	2146	2150	rVB7	12314	24856	0.54%	0.046%
64	15.680	2150	2158	2162	rBV9	8028	17163	0.37%	0.032%
65	15.851	2179	2187	2189	rBV2	88182	121035	2.63%	0.226%
66	15.945	2199	2203	2206	rBV6	5587	10278	0.22%	0.019%
67	16.645	2317	2322	2326	rBV	82476	105576	2.30%	0.197%
68	16.698	2326	2331	2334	rVB2	23212	34676	0.75%	0.065%
69	16.845	2350	2356	2361	rBV	1519747	2081830	45.30%	3.881%
70	16.886	2361	2363	2367	rVV	39498	43989	0.96%	0.082%
71	16.945	2367	2373	2382	rVV	2909449	4081192	88.80%	7.609%

Data Path : Z:\SVOASRV\HPCHEM1\BNA_N\DATA\BN013020\
 Data File : BN009480.D
 Acq On : 30 Jan 2020 18:30
 Operator : CG/JU
 Sample : L1301-02
 Misc :
 ALS Vial : 6 Sample Multiplier: 1

Instrument :
 BNA_N
 ClientSampleId :
 BFM07

Integration Parameters: LSCINT.P

Integrator: RTE
 Smoothing : OFF
 Sampling : 1
 Start Thrs: 0.2
 Stop Thrs : 0

Filtering: 5
 Min Area: 0.1 % of largest Peak
 Max Peaks: 100
 Peak Location: TOP

If leading or trailing edge < 100 prefer < Baseline drop else tangent >
 Peak separation: 5

Method : Z:\SVOASRV\HPCHEM1\BNA_N\METHODS\SOM-EPA-BN012220MA.M
 Title : SVOA CALIBRATION

72	17.063	2391	2393	2397	rVB5	9797	11025	0.24%	0.021%
73	17.157	2406	2409	2412	rBV4	7264	11098	0.24%	0.021%
74	17.257	2419	2426	2430	rVB2	37143	62211	1.35%	0.116%
75	17.298	2430	2433	2436	rBV4	8804	9612	0.21%	0.018%
76	17.380	2442	2447	2451	rBV	72687	88716	1.93%	0.165%
77	17.551	2472	2476	2480	rVB2	31692	43861	0.95%	0.082%
78	17.774	2509	2514	2520	rBV	218656	316435	6.89%	0.590%
79	18.074	2561	2565	2569	rVB	71354	85880	1.87%	0.160%
80	18.704	2667	2672	2675	rBV3	116596	198362	4.32%	0.370%
81	18.733	2675	2677	2681	rVB2	105712	120285	2.62%	0.224%
82	18.880	2698	2702	2705	rBV2	52803	65502	1.43%	0.122%
83	18.910	2705	2707	2711	rVB5	17465	21230	0.46%	0.040%
84	19.068	2730	2734	2741	rBV	115941	163052	3.55%	0.304%
85	19.133	2741	2745	2754	rVB	40271	80095	1.74%	0.149%
86	19.251	2758	2765	2771	rBV	3449346	4595682	100.00%	8.568%
87	19.304	2771	2774	2777	rVB	69552	71012	1.55%	0.132%
88	19.839	2862	2865	2869	rBV	66548	75482	1.64%	0.141%
89	20.339	2947	2950	2954	rVB	96232	96844	2.11%	0.181%
90	20.804	3024	3029	3034	rBV2	334084	475271	10.34%	0.886%
91	21.051	3066	3071	3077	rBV	1736198	2178101	47.39%	4.061%
92	21.245	3100	3104	3109	rVB	343805	358788	7.81%	0.669%
93	21.662	3171	3175	3183	rBV	470189	580025	12.62%	1.081%
94	22.098	3245	3249	3255	rBV	567896	707082	15.39%	1.318%
95	22.574	3326	3330	3335	rVB	594263	788201	17.15%	1.470%
96	23.039	3402	3409	3415	rBV	2573080	4281479	93.16%	7.982%
97	23.104	3415	3420	3425	rVV	588919	907970	19.76%	1.693%
98	23.168	3425	3431	3440	rVB	1260795	2180186	47.44%	4.065%
99	23.698	3516	3521	3527	rVB	444002	736824	16.03%	1.374%
100	24.380	3632	3637	3643	rVB2	255190	496609	10.81%	0.926%

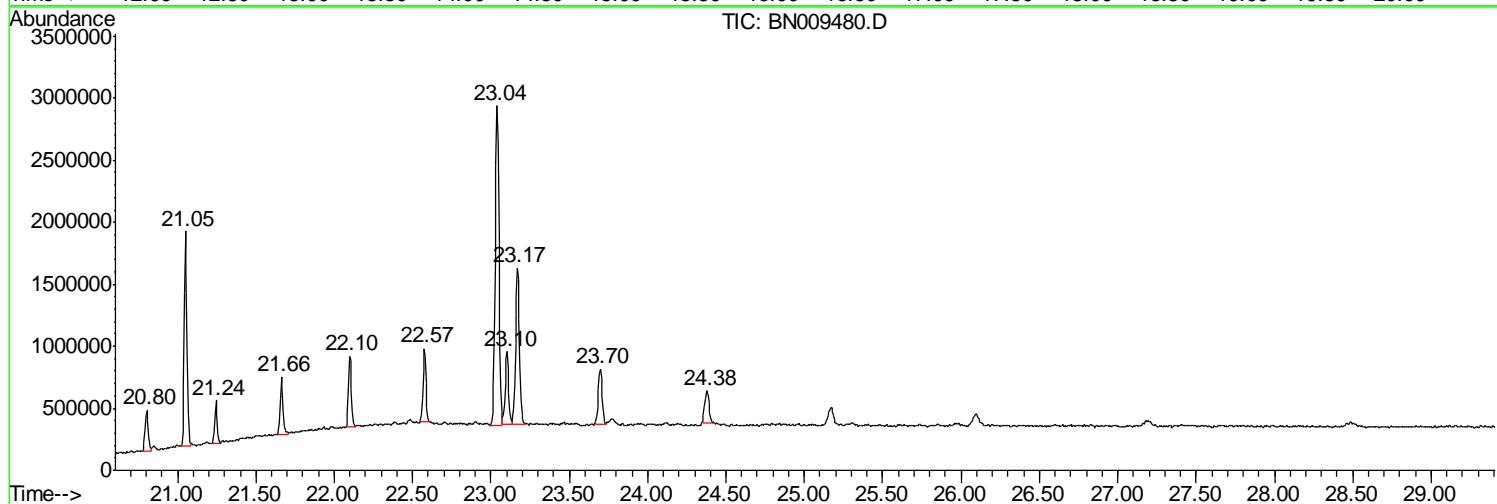
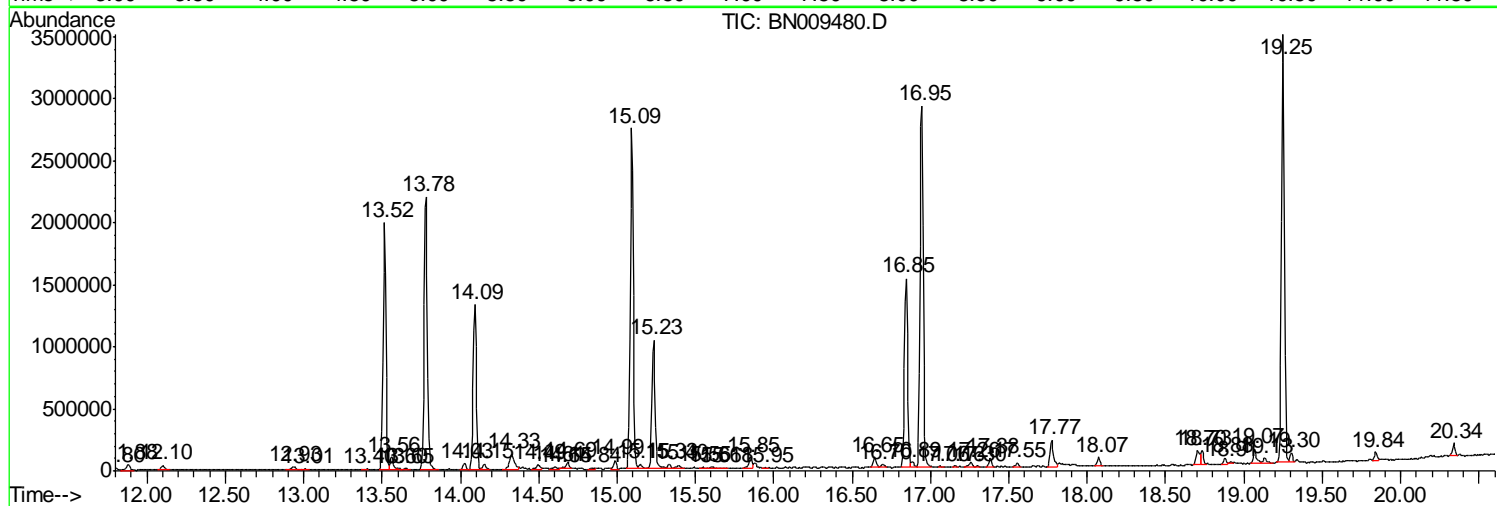
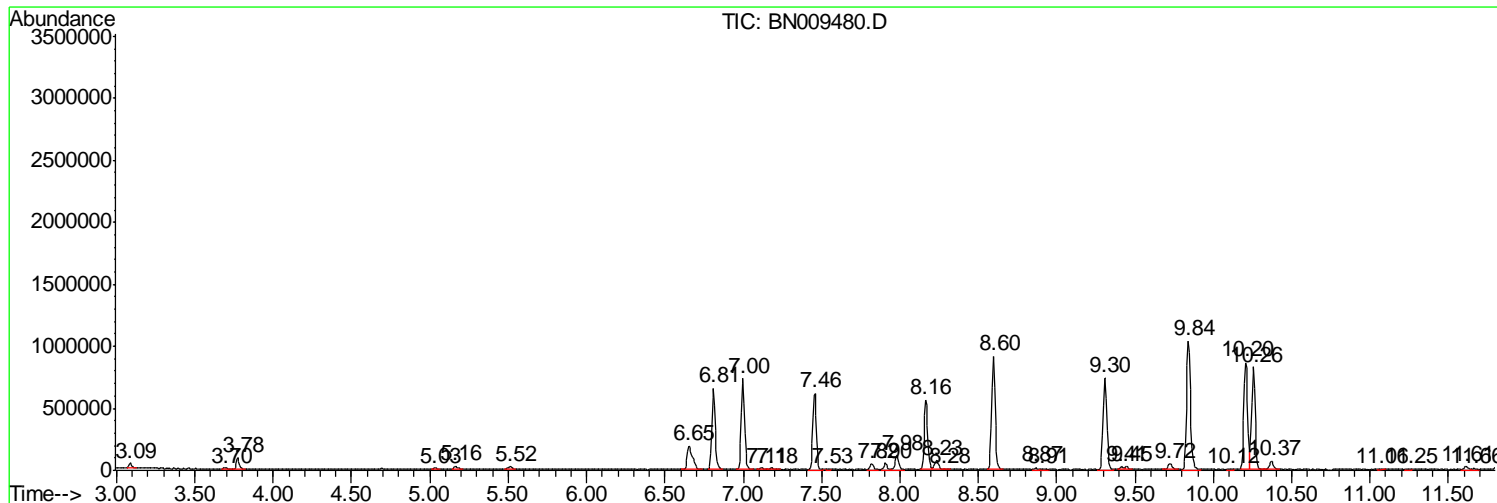
Sum of corrected areas: 53636878

Data Path : Z:\SVOASRV\HPCHEM1\BNA N\DATA\BN013020\
 Data File : BN009480.D
 Acq On : 30 Jan 2020 18:30
 Operator : CG/JU
 Sample : L1301-02
 Misc :
 ALS Vial : 6 Sample Multiplier: 1

Instrument :
 BNA_N
 ClientSampleId :
 BFM07

Quant Method : Z:\SVOASRV\HPCHEM1\BNA_N\METHODS\SOM-EPA-BN012220MA.M
 Quant Title : SVOA CALIBRATION

TIC Library : C:\DATABASE\NIST11.L
 TIC Integration Parameters: LSCINT.P



Data Path : Z:\SVOASRV\HPCHEM1\BNA N\DATA\BN013020\
 Data File : BN009480.D
 Acq On : 30 Jan 2020 18:30
 Operator : CG/JU
 Sample : L1301-02
 Misc :
 ALS Vial : 6 Sample Multiplier: 1

Instrument :
 BNA_N
 ClientSampled :
 BFM07

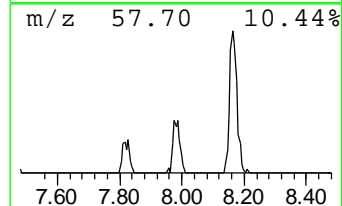
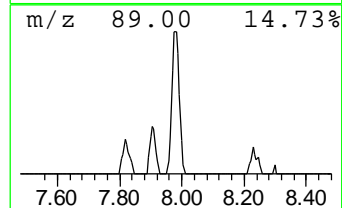
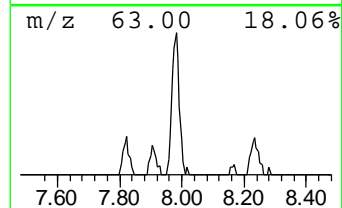
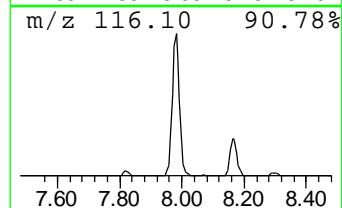
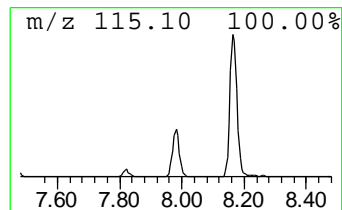
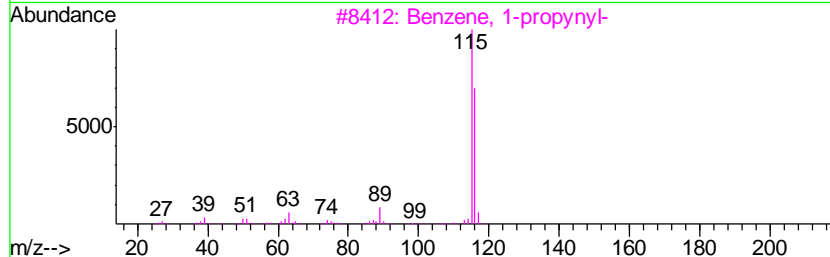
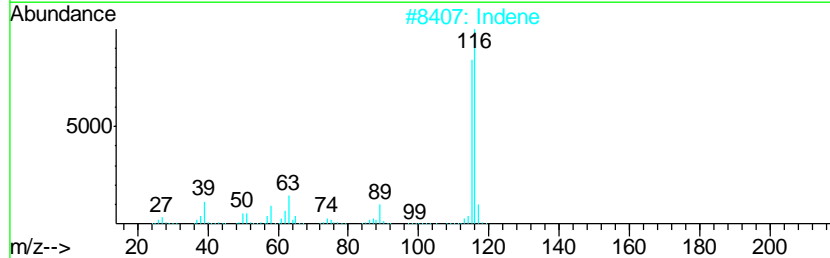
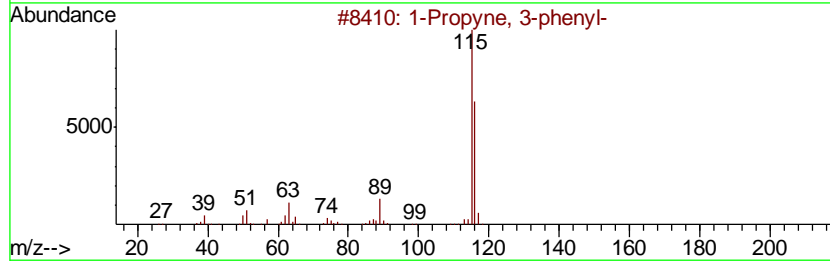
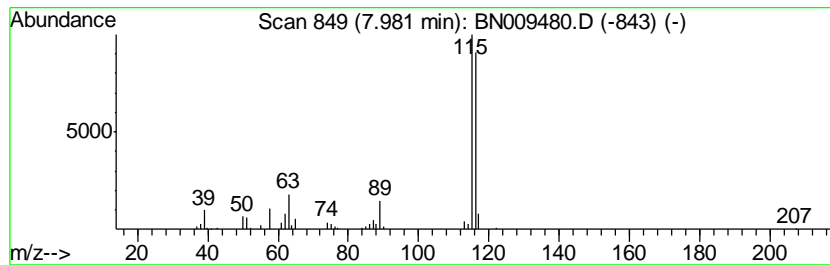
Quant Method : Z:\SVOASRV\HPCHEM1\BNA_N\METHODS\SOM-EPA-BN012220MA.M
 Quant Title : SVOA CALIBRATION

TIC Library : C:\DATABASE\NIST11.L
 TIC Integration Parameters: LSCINT.P

 Peak Number 2 1-Propyne, 3-phenyl- Concentration Rank 8

R.T.	EstConc	Area	Relative to ISTD	R.T.
7.98	3.99 ng/ul	193457	1,4-Dichlorobenzene-d4	7.46

Hit#	of	Tentative ID	MW	MolForm	CAS#	Qual
1	5	1-Propyne, 3-phenyl-	116	C9H8	010147-11-2	94
2		Indene	116	C9H8	000095-13-6	93
3		Benzene, 1-propynyl-	116	C9H8	000673-32-5	91
4		Benzene, 1-ethynyl-4-methyl-	116	C9H8	000766-97-2	91
5		Benzene, 1-propynyl-	116	C9H8	000673-32-5	91



Data Path : Z:\SVOASRV\HPCHEM1\BNA N\DATA\BN013020\
 Data File : BN009480.D
 Acq On : 30 Jan 2020 18:30
 Operator : CG/JU
 Sample : L1301-02
 Misc :
 ALS Vial : 6 Sample Multiplier: 1

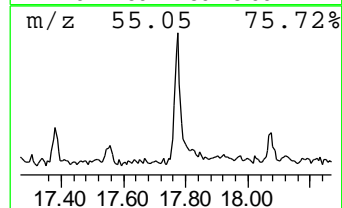
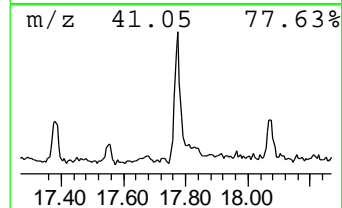
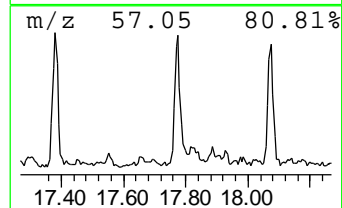
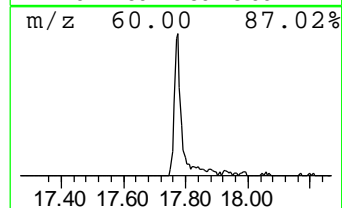
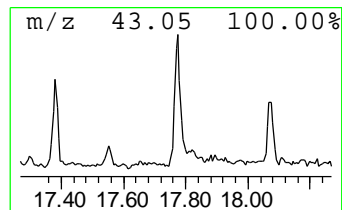
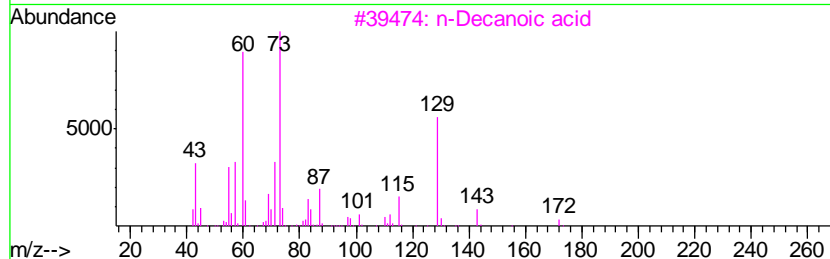
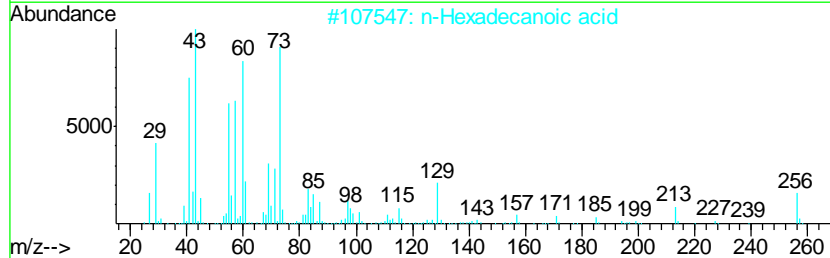
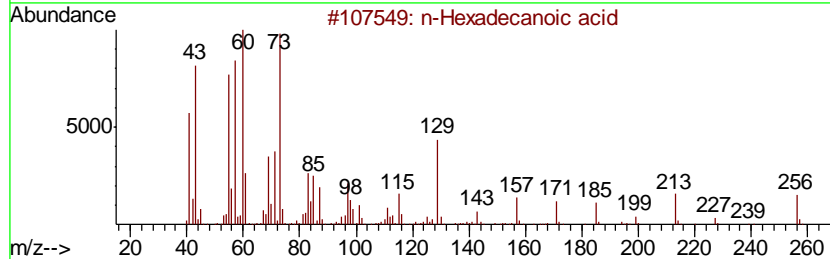
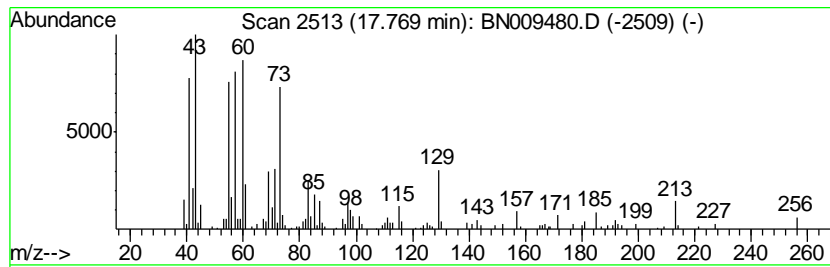
Instrument :
 BNA_N
 ClientSampled :
 BFM07

Quant Method : Z:\SVOASRV\HPCHEM1\BNA_N\METHODS\SOM-EPA-BN012220MA.M
 Quant Title : SVOA CALIBRATION

TIC Library : C:\DATABASE\NIST11.L
 TIC Integration Parameters: LSCINT.P

 Peak Number 3 n-Hexadecanoic acid Concentration Rank 10

R.T.	EstConc	Area	Relative to ISTD	R.T.		
17.77	3.04 ng/ul	316435	Phenanthrene-d10	16.85		
Hit# of	5	Tentative ID	MW	MolForm	CAS#	Qual
1		n-Hexadecanoic acid	256	C16H32O2	000057-10-3	91
2		n-Hexadecanoic acid	256	C16H32O2	000057-10-3	83
3		n-Decanoic acid	172	C10H20O2	000334-48-5	83
4		Tetradecanoic acid	228	C14H28O2	000544-63-8	83
5		n-Hexadecanoic acid	256	C16H32O2	000057-10-3	81



Data Path : Z:\SVOASRV\HPCHEM1\BNA N\DATA\BN013020\
 Data File : BN009480.D
 Acq On : 30 Jan 2020 18:30
 Operator : CG/JU
 Sample : L1301-02
 Misc :
 ALS Vial : 6 Sample Multiplier: 1

Instrument :
 BNA_N
 ClientSampled :
 BFM07

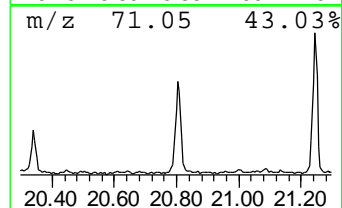
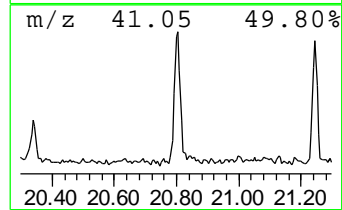
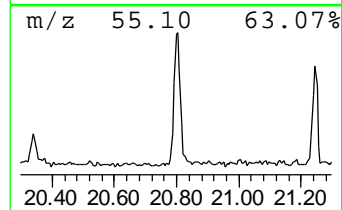
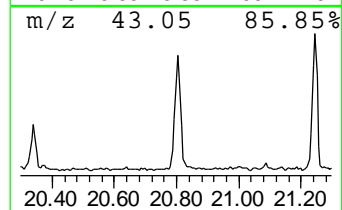
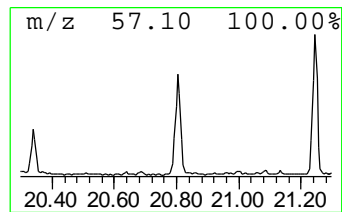
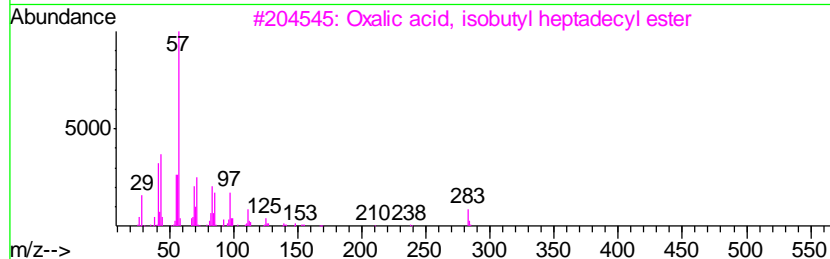
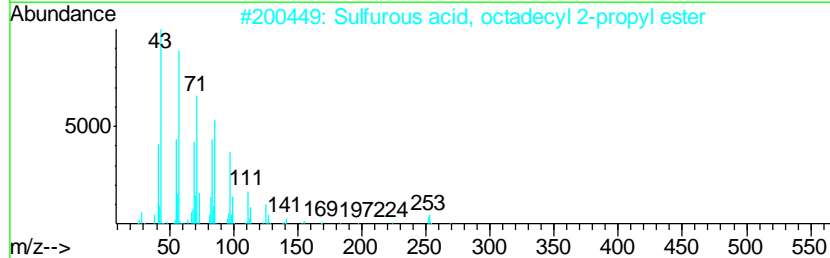
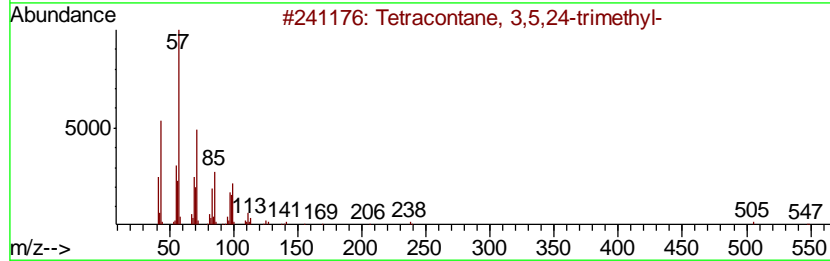
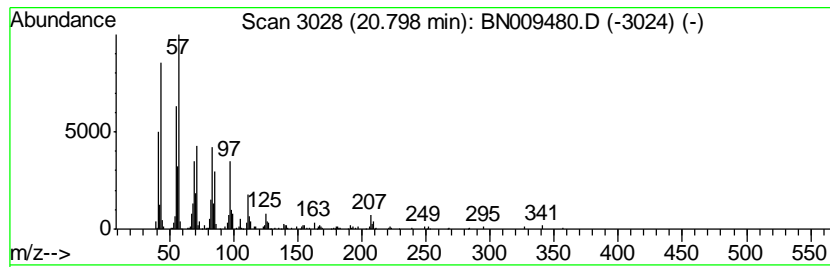
Quant Method : Z:\SVOASRV\HPCHEM1\BNA_N\METHODS\SOM-EPA-BN012220MA.M
 Quant Title : SVOA CALIBRATION

TIC Library : C:\DATABASE\NIST11.L
 TIC Integration Parameters: LSCINT.P

 Peak Number 4 (DEL) Alkane: Straight-Chai... Concentration Rank 7

R.T.	EstConc	Area	Relative to ISTD	R.T.
20.80	4.36 ng/ul	475271	Chrysene-d12	21.05

Hit#	of	Tentative ID	MW	MolForm	CAS#	Qual
1	5	Tetracontane, 3,5,24-trimethyl-	605	C43H88	055162-61-3	90
2		Sulfurous acid, octadecyl 2-prop...	376	C21H44O3S	1000309-12-7	83
3		Oxalic acid, isobutyl heptadecyl...	384	C23H44O4	1000309-38-2	64
4		Isobutyl tetradecyl carbonate	314	C19H38O3	959275-58-2	62
5		Oxalic acid, isobutyl hexadecyl ...	370	C22H42O4	1000309-38-1	58



Data Path : Z:\SVOASRV\HPCHEM1\BNA N\DATA\BN013020\
 Data File : BN009480.D
 Acq On : 30 Jan 2020 18:30
 Operator : CG/JU
 Sample : L1301-02
 Misc :
 ALS Vial : 6 Sample Multiplier: 1

Instrument :
 BNA_N
 ClientSampleID :
 BFM07

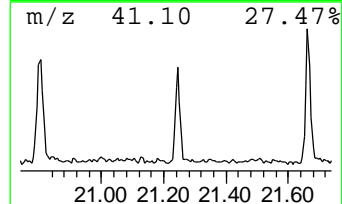
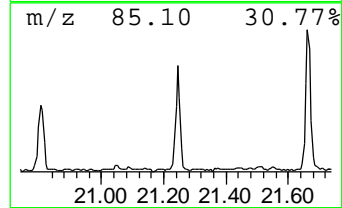
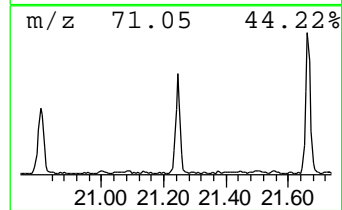
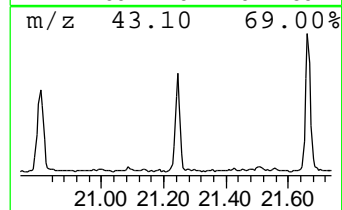
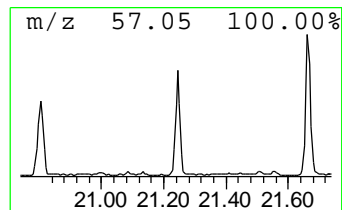
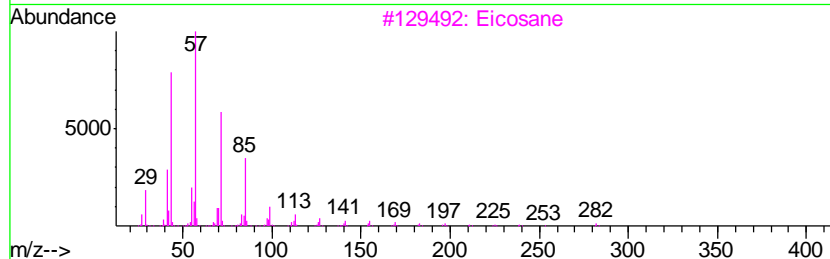
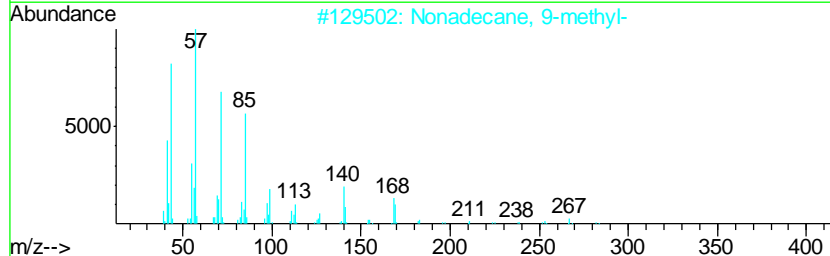
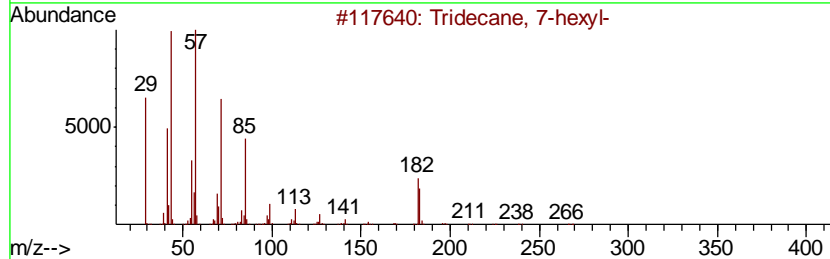
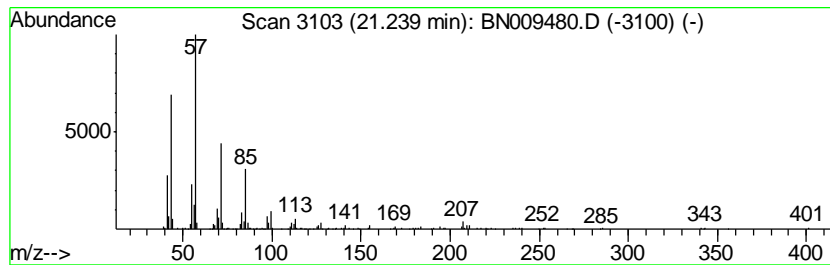
Quant Method : Z:\SVOASRV\HPCHEM1\BNA_N\METHODS\SOM-EPA-BN012220MA.M
 Quant Title : SVOA CALIBRATION

TIC Library : C:\DATABASE\NIST11.L
 TIC Integration Parameters: LSCINT.P

 Peak Number 5 (DEL) Alkane: Straight-Chai... Concentration Rank 9

R.T.	EstConc	Area	Relative to ISTD	R.T.
21.24	3.29 ng/ul	358788	Chrysene-d12	21.05

Hit#	of	Tentative ID	MW	MolForm	CAS#	Qual
1	5	Tridecane, 7-hexyl-	268	C19H40	007225-66-3	93
2		Nonadecane, 9-methyl-	282	C20H42	013287-24-6	93
3		Eicosane	282	C20H42	000112-95-8	91
4		Octacosane	394	C28H58	000630-02-4	91
5		Nonadecane, 9-methyl-	282	C20H42	013287-24-6	90



Data Path : Z:\SVOASRV\HPCHEM1\BNA N\DATA\BN013020\
 Data File : BN009480.D
 Acq On : 30 Jan 2020 18:30
 Operator : CG/JU
 Sample : L1301-02
 Misc :
 ALS Vial : 6 Sample Multiplier: 1

Instrument :
 BNA_N
 ClientSampleID :
 BFM07

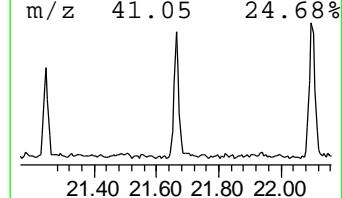
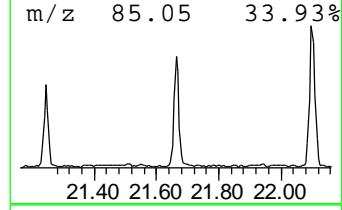
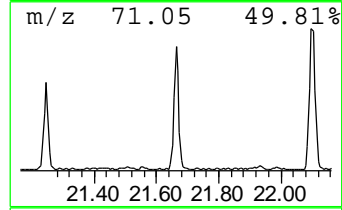
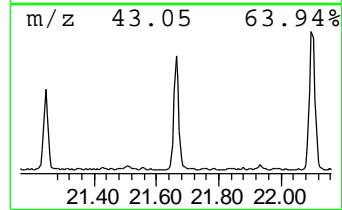
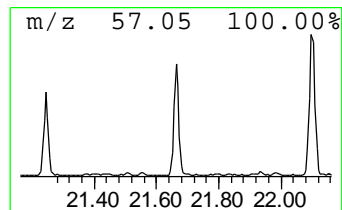
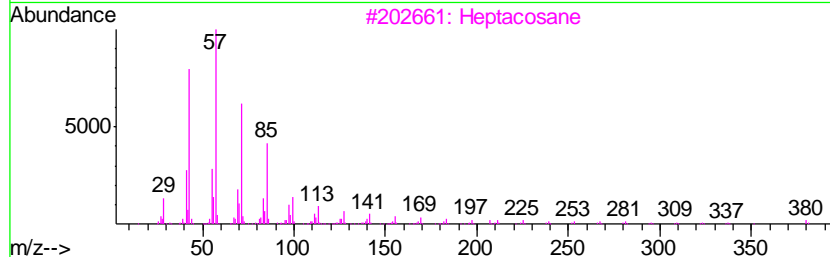
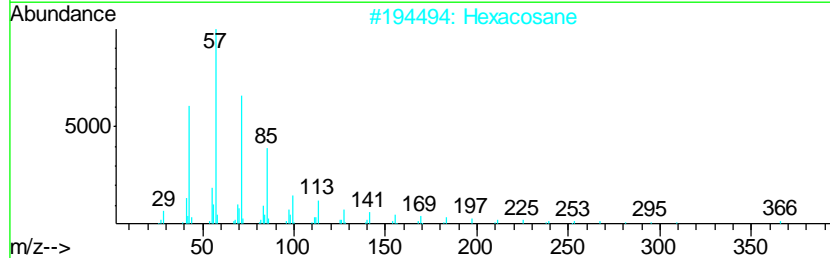
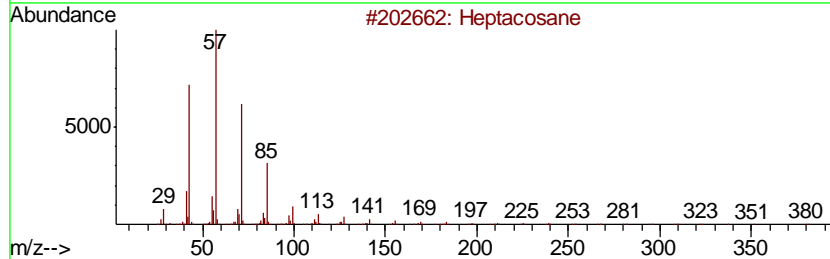
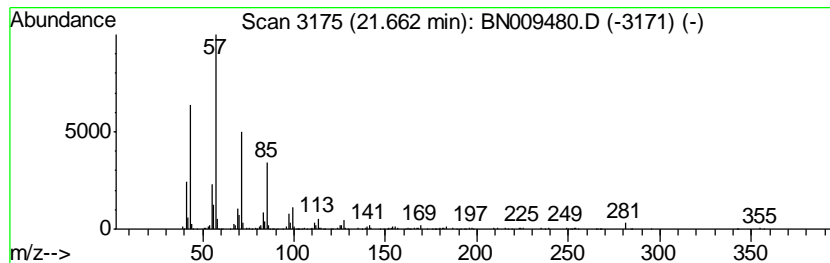
Quant Method : Z:\SVOASRV\HPCHEM1\BNA_N\METHODS\SOM-EPA-BN012220MA.M
 Quant Title : SVOA CALIBRATION

TIC Library : C:\DATABASE\NIST11.L
 TIC Integration Parameters: LSCINT.P

 Peak Number 6 (DEL) Alkane: Straight-Chai... Concentration Rank 5

R.T.	EstConc	Area	Relative to ISTD	R.T.
21.66	5.33 ng/ul	580025	Chrysene-d12	21.05

Hit#	of	Tentative ID	MW	MolForm	CAS#	Qual
1	5	Heptacosane	380	C27H56	000593-49-7	91
2		Hexacosane	366	C26H54	000630-01-3	90
3		Heptacosane	380	C27H56	000593-49-7	87
4		Tridecane, 1-iodo-	310	C13H27I	035599-77-0	87
5		Tetracosane	338	C24H50	000646-31-1	87



Data Path : Z:\SVOASRV\HPCHEM1\BNA N\DATA\BN013020\
 Data File : BN009480.D
 Acq On : 30 Jan 2020 18:30
 Operator : CG/JU
 Sample : L1301-02
 Misc :
 ALS Vial : 6 Sample Multiplier: 1

Instrument :
 BNA_N
 ClientSampleId :
 BFM07

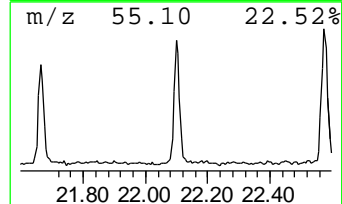
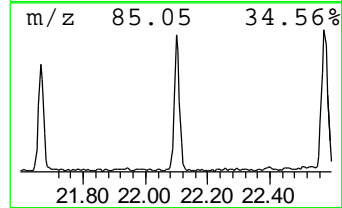
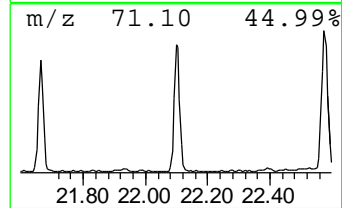
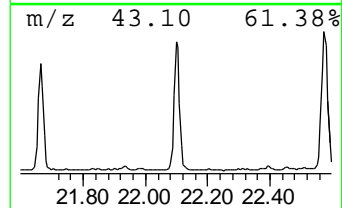
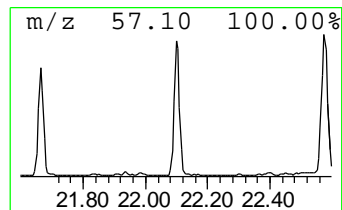
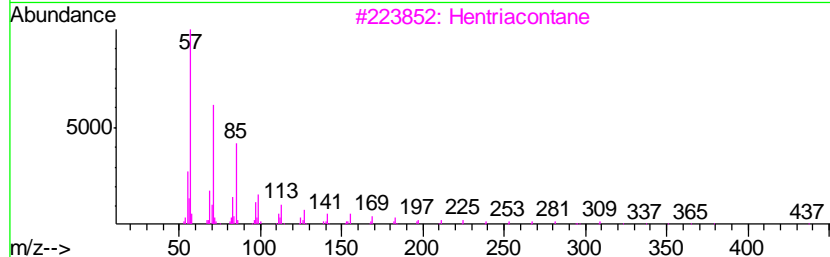
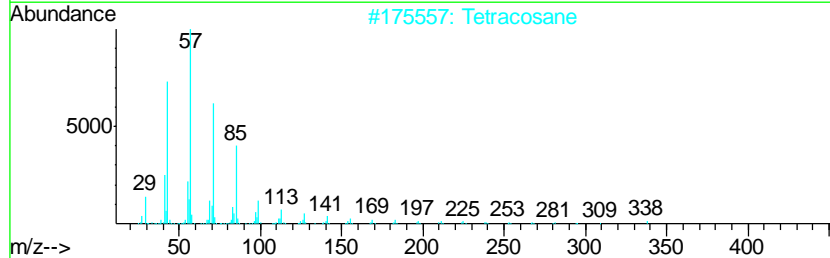
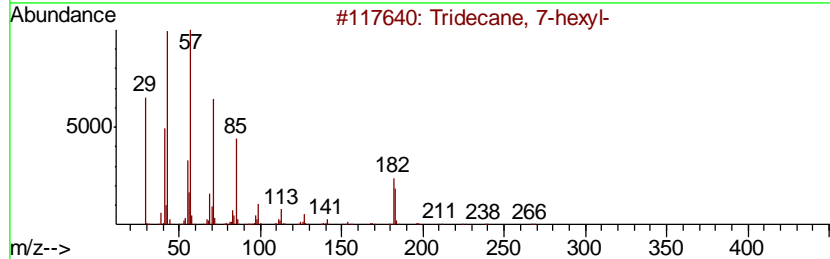
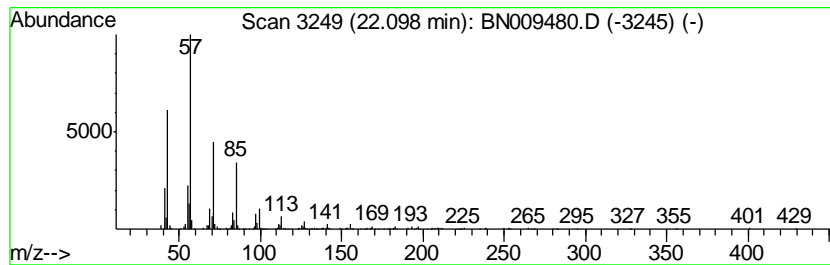
Quant Method : Z:\SVOASRV\HPCHEM1\BNA_N\METHODS\SOM-EPA-BN012220MA.M
 Quant Title : SVOA CALIBRATION

TIC Library : C:\DATABASE\NIST11.L
 TIC Integration Parameters: LSCINT.P

 Peak Number 7 (DEL) Alkane: Straight-Chai... Concentration Rank 4

R.T.	EstConc	Area	Relative to ISTD	R.T.
22.10	6.49 ng/ul	707082	Chrysene-d12	21.05

Hit#	of	Tentative ID	MW	MolForm	CAS#	Qual
1	5	Tridecane, 7-hexyl-	268	C19H40	007225-66-3	91
2		Tetracosane	338	C24H50	000646-31-1	91
3		Hentriacontane	437	C31H64	000630-04-6	90
4		Nonadecane, 2-methyl-	282	C20H42	001560-86-7	87
5		Heneicosane	296	C21H44	000629-94-7	87



Data Path : Z:\SVOASRV\HPCHEM1\BNA N\DATA\BN013020\
 Data File : BN009480.D
 Acq On : 30 Jan 2020 18:30
 Operator : CG/JU
 Sample : L1301-02
 Misc :
 ALS Vial : 6 Sample Multiplier: 1

Instrument :
 BNA_N
 ClientSampleId :
 BFM07

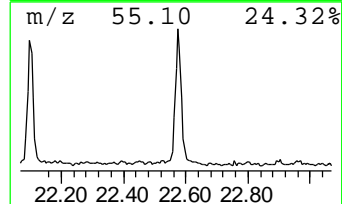
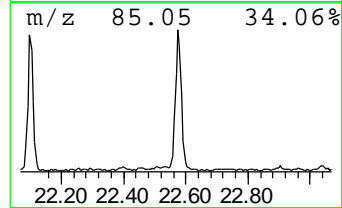
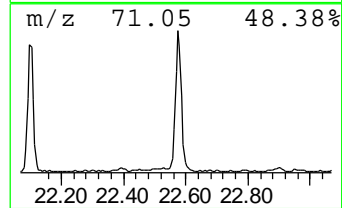
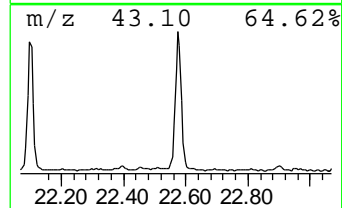
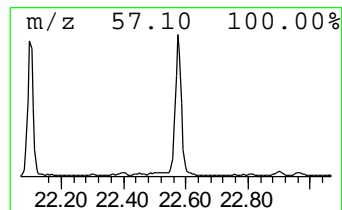
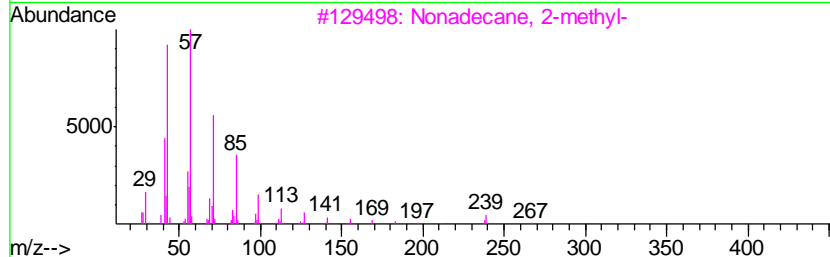
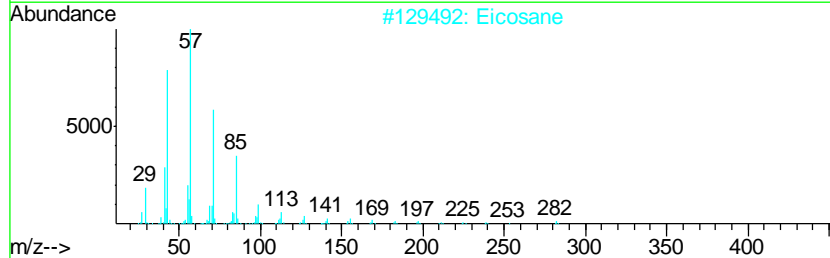
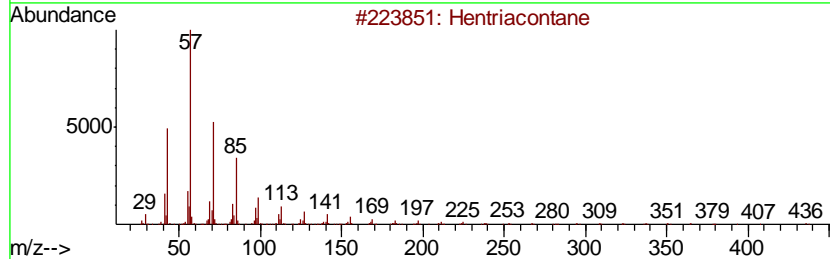
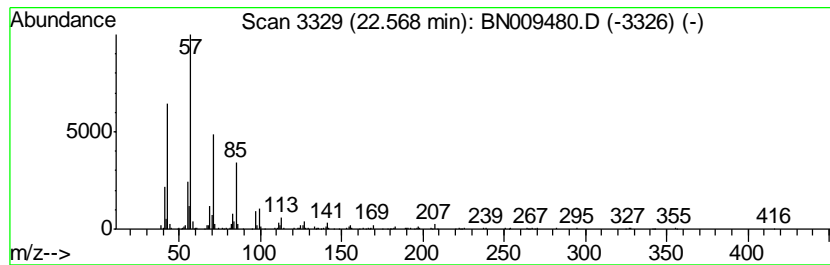
Quant Method : Z:\SVOASRV\HPCHEM1\BNA_N\METHODS\SOM-EPA-BN012220MA.M
 Quant Title : SVOA CALIBRATION

TIC Library : C:\DATABASE\NIST11.L
 TIC Integration Parameters: LSCINT.P

 Peak Number 8 (DEL) Alkane: Straight-Chai... Concentration Rank 2

R.T.	EstConc	Area	Relative to ISTD	R.T.
22.57	7.23 ng/ul	788201	Perylene-d12	23.17

Hit#	of	Tentative ID	MW	MolForm	CAS#	Qual
1	5	Hentriacontane	437	C31H64	000630-04-6	91
2		Eicosane	282	C20H42	000112-95-8	90
3		Nonadecane, 2-methyl-	282	C20H42	001560-86-7	87
4		Hexadecane	226	C16H34	000544-76-3	87
5		Tetratetracontane	619	C44H90	007098-22-8	87



Data Path : Z:\SVOASRV\HPCHEM1\BNA N\DATA\BN013020\
 Data File : BN009480.D
 Acq On : 30 Jan 2020 18:30
 Operator : CG/JU
 Sample : L1301-02
 Misc :
 ALS Vial : 6 Sample Multiplier: 1

Instrument :
 BNA_N
 ClientSampleId :
 BFM07

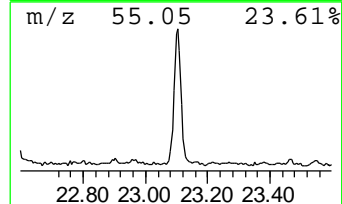
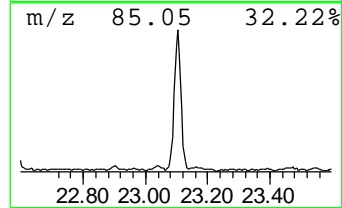
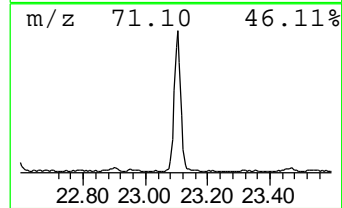
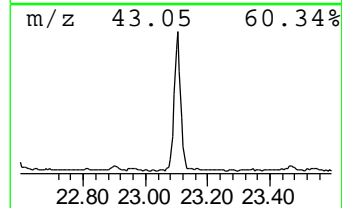
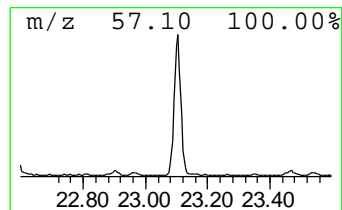
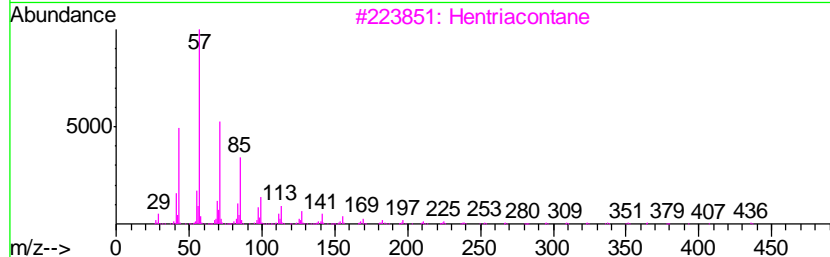
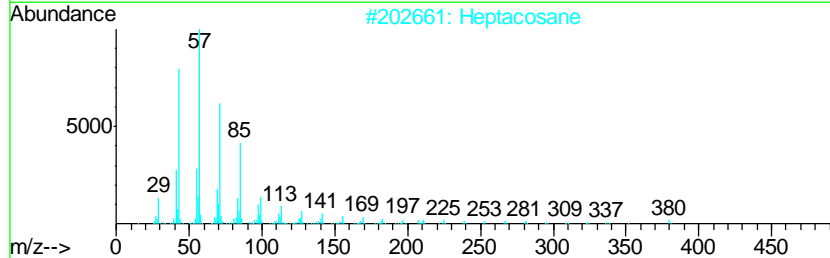
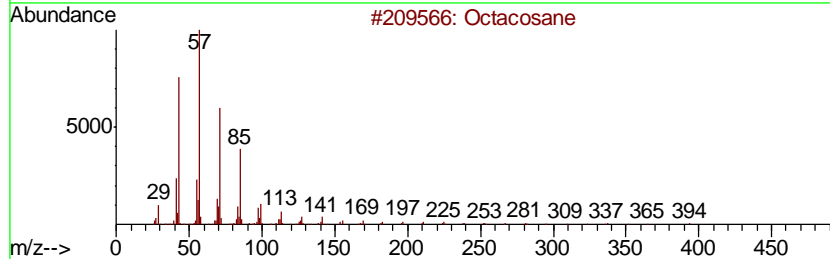
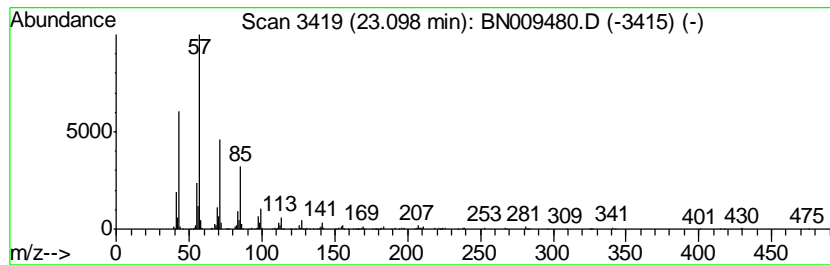
Quant Method : Z:\SVOASRV\HPCHEM1\BNA_N\METHODS\SOM-EPA-BN012220MA.M
 Quant Title : SVOA CALIBRATION

TIC Library : C:\DATABASE\NIST11.L
 TIC Integration Parameters: LSCINT.P

 Peak Number 9 (DEL) Alkane: Straight-Chai... Concentration Rank 1

R.T.	EstConc	Area	Relative to ISTD	R.T.
23.10	8.33 ng/ul	907970	Perylene-d12	23.17

Hit#	of	Tentative ID	MW	MolForm	CAS#	Qual
1	5	Octacosane	394	C28H58	000630-02-4	91
2		Heptacosane	380	C27H56	000593-49-7	91
3		Hentriacontane	437	C31H64	000630-04-6	91
4		Tetracosane	338	C24H50	000646-31-1	91
5		Hentriacontane	437	C31H64	000630-04-6	90



Data Path : Z:\SVOASRV\HPCHEM1\BNA N\DATA\BN013020\
 Data File : BN009480.D
 Acq On : 30 Jan 2020 18:30
 Operator : CG/JU
 Sample : L1301-02
 Misc :
 ALS Vial : 6 Sample Multiplier: 1

Instrument :
 BNA_N
 ClientSampleId :
 BFM07

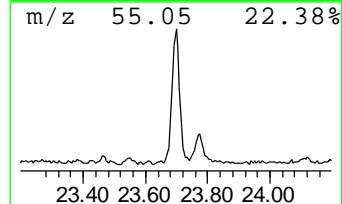
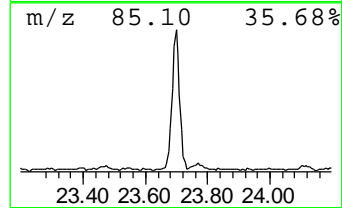
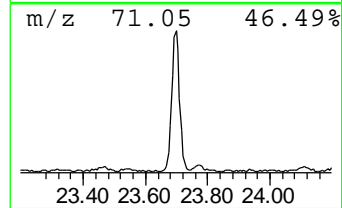
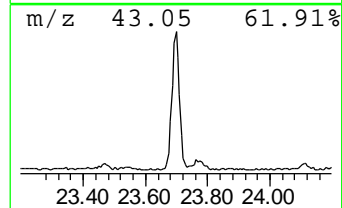
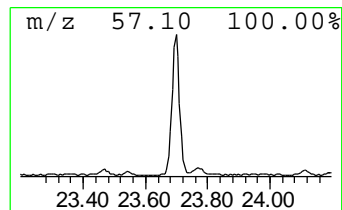
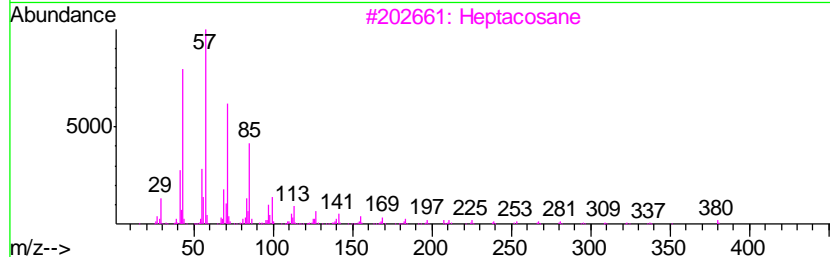
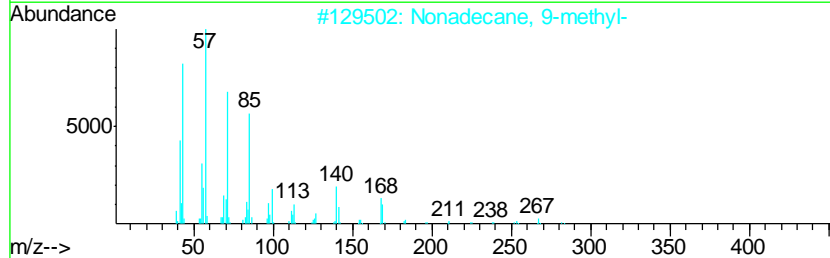
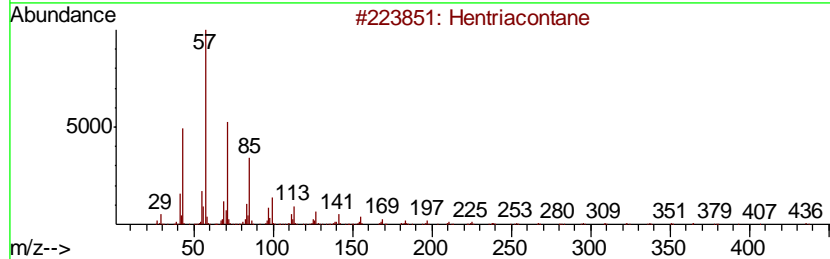
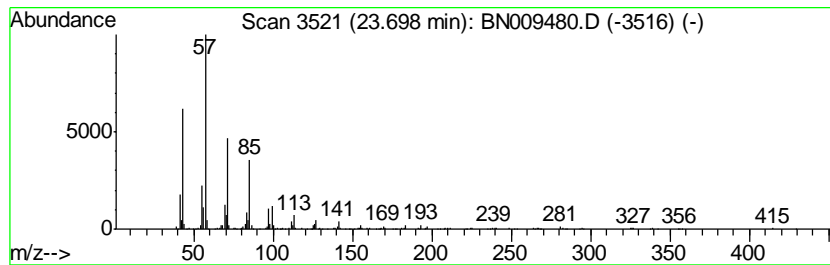
Quant Method : Z:\SVOASRV\HPCHEM1\BNA_N\METHODS\SOM-EPA-BN012220MA.M
 Quant Title : SVOA CALIBRATION

TIC Library : C:\DATABASE\NIST11.L
 TIC Integration Parameters: LSCINT.P

 Peak Number 10 (DEL) Alkane: Straight-Chai... Concentration Rank 3

R.T.	EstConc	Area	Relative to ISTD	R.T.
23.70	6.76 ng/ul	736824	Perylene-d12	23.17

Hit#	of	Tentative ID	MW	MolForm	CAS#	Qual
1	5	Hentriacontane	437	C31H64	000630-04-6	91
2		Nonadecane, 9-methyl-	282	C20H42	013287-24-6	90
3		Heptacosane	380	C27H56	000593-49-7	87
4		Tetratetracontane	619	C44H90	007098-22-8	87
5		Eicosane	282	C20H42	000112-95-8	87



Data Path : Z:\SVOASRV\HPCHEM1\BNA N\DATA\BN013020\
 Data File : BN009480.D
 Acq On : 30 Jan 2020 18:30
 Operator : CG/JU
 Sample : L1301-02
 Misc :
 ALS Vial : 6 Sample Multiplier: 1

Instrument :
 BNA_N
 ClientSampled :
 BFM07

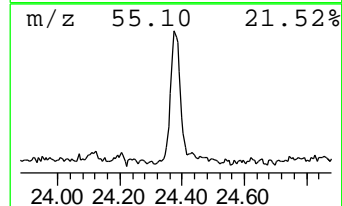
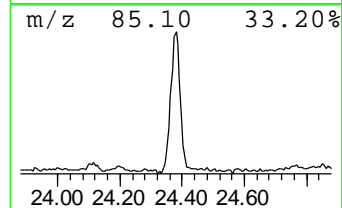
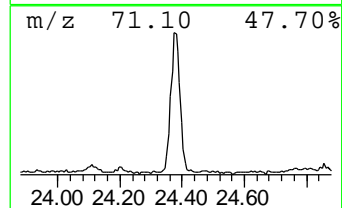
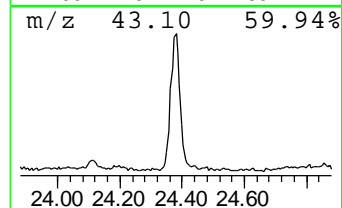
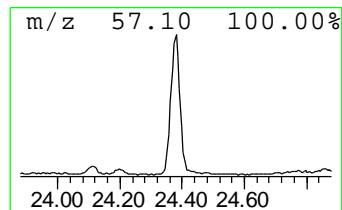
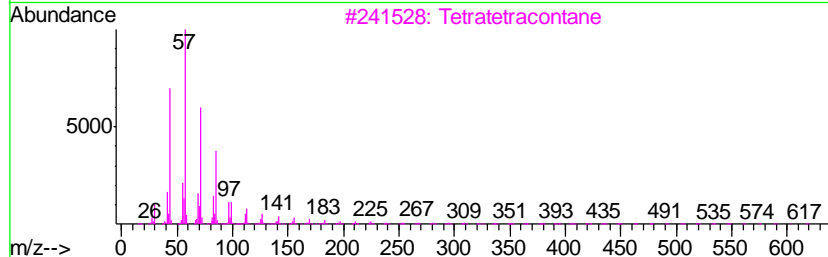
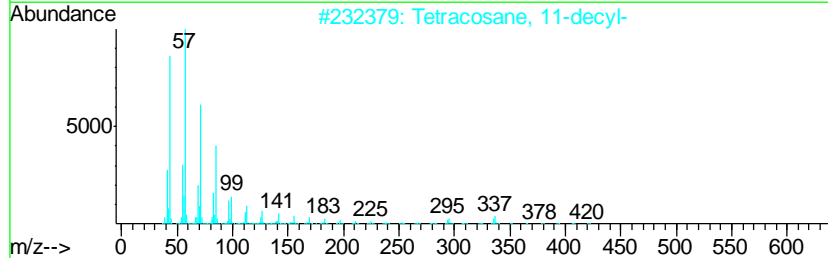
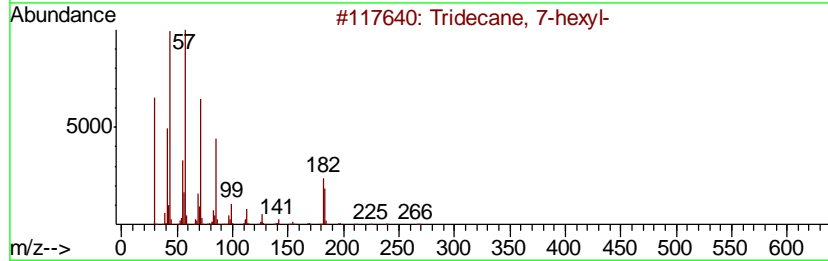
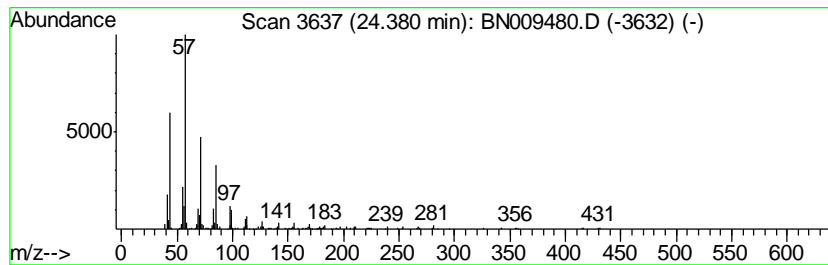
Quant Method : Z:\SVOASRV\HPCHEM1\BNA_N\METHODS\SOM-EPA-BN012220MA.M
 Quant Title : SVOA CALIBRATION

TIC Library : C:\DATABASE\NIST11.L
 TIC Integration Parameters: LSCINT.P

 Peak Number 11 (DEL) Alkane: Straight-Chai... Concentration Rank 6

R.T.	EstConc	Area	Relative to ISTD	R.T.
24.38	4.56 ng/ul	496609	Perylene-d12	23.17

Hit#	of	Tentative ID	MW	MolForm	CAS#	Qual
1	5	Tridecane, 7-hexyl-	268	C19H40	007225-66-3	91
2		Tetracosane, 11-decyl-	479	C34H70	055429-84-0	81
3		Tetratetracontane	619	C44H90	007098-22-8	81
4		2-methyloctacosane	408	C29H60	1000376-72-8	81
5		Hentriacontane	437	C31H64	000630-04-6	74



Data Path : Z:\SVOASRV\HPCHEM1\BNA_N\DATA\BN013020\
 Data File : BN009480.D
 Acq On : 30 Jan 2020 18:30
 Operator : CG/JU
 Sample : L1301-02
 Misc :
 ALS Vial : 6 Sample Multiplier: 1

Instrument :
 BNA_N
 ClientSampleId :
 BFM07

Quant Method : Z:\SVOASRV\HPCHEM1\BNA_N\METHODS\SOM-EPA-BN012220MA.M
 Quant Title : SVOA CALIBRATION

TIC Library : C:\DATABASE\NIST11.L
 TIC Integration Parameters: LSCINT.P

TIC Top Hit name	RT	EstConc	Units	Response	--Internal Standard--			
					#	RT	Resp	Conc
1-Propyne, 3-phenyl-	7.98	4.0	ng/ul	193457	1	7.46	969259	20.0
n-Hexadecanoic acid	17.77	3.0	ng/ul	316435	4	16.85	2081830	20.0
(DEL) Alkane: Str...	20.80	4.4	ng/ul	475271	5	21.05	2178100	20.0
(DEL) Alkane: Str...	21.24	3.3	ng/ul	358788	5	21.05	2178100	20.0
(DEL) Alkane: Str...	21.66	5.3	ng/ul	580025	5	21.05	2178100	20.0
(DEL) Alkane: Str...	22.10	6.5	ng/ul	707082	5	21.05	2178100	20.0
(DEL) Alkane: Str...	22.57	7.2	ng/ul	788201	6	23.17	2180190	20.0
(DEL) Alkane: Str...	23.10	8.3	ng/ul	907970	6	23.17	2180190	20.0
(DEL) Alkane: Str...	23.70	6.8	ng/ul	736824	6	23.17	2180190	20.0
(DEL) Alkane: Str...	24.38	4.6	ng/ul	496609	6	23.17	2180190	20.0