

Data Path : Z:\svoasrv\HPCHEM1\BNA_N\Data\BN013124\
 Data File : BN029460.D
 Acq On : 31 Jan 2024 22:23
 Operator : MA/JU
 Sample : P1262-07
 Misc :
 ALS Vial : 10 Sample Multiplier: 1

Instrument :
 BNA_N
 ClientSampleId :
 BP-VPB-195-EB-20240125

Quant Time: Feb 01 01:53:36 2024
 Quant Method : Z:\svoasrv\HPCHEM1\BNA_N\Methods\8270-SIM-BN012924.M
 Quant Title : ASP BNA STANDARDS FOR 5 POINT CALIBRATION
 QLast Update : Thu Feb 01 01:51:59 2024
 Response via : Initial Calibration

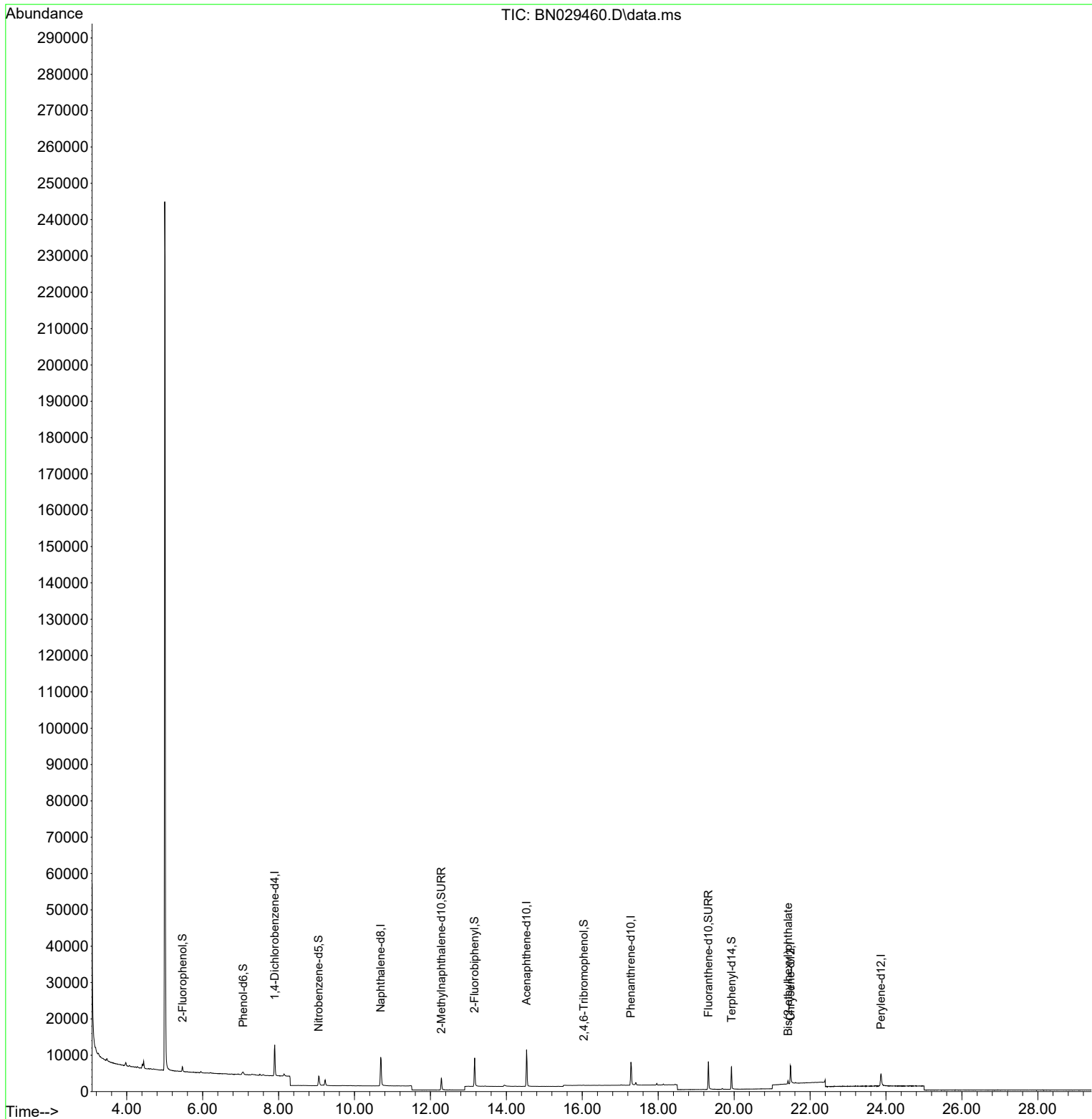
Compound	R.T.	QIon	Response	Conc	Units	Dev(Min)
Internal Standards						
1) 1,4-Dichlorobenzene-d4	7.898	152	4362	0.400	ng	0.00
7) Naphthalene-d8	10.690	136	11692	0.400	ng	# 0.00
13) Acenaphthene-d10	14.532	164	5452	0.400	ng	0.00
19) Phenanthrene-d10	17.280	188	9824	0.400	ng	# 0.00
29) Chrysene-d12	21.483	240	6246	0.400	ng	0.00
35) Perylene-d12	23.867	264	5732	0.400	ng	0.00
System Monitoring Compounds						
4) 2-Fluorophenol	5.471	112	1108	0.106	ng	0.00
5) Phenol-d6	7.067	99	806	0.067	ng	0.00
8) Nitrobenzene-d5	9.057	82	2843	0.292	ng	0.00
11) 2-Methylnaphthalene-d10	12.287	152	4887	0.307	ng	0.00
14) 2,4,6-Tribromophenol	16.039	330	65	0.037	ng	0.01
15) 2-Fluorobiphenyl	13.164	172	7065	0.302	ng	0.00
27) Fluoranthene-d10	19.322	212	9147	0.384	ng	0.00
31) Terphenyl-d14	19.931	244	6484	0.418	ng	0.00
Target Compounds						Qvalue
34) Bis(2-ethylhexyl)phtha...	21.420	149	972	0.067	ng	98

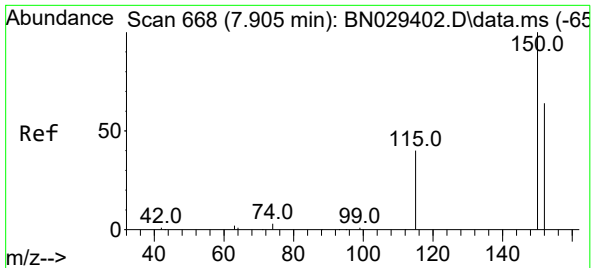
(#) = qualifier out of range (m) = manual integration (+) = signals summed

Data Path : Z:\svoasrv\HPCHEM1\BNA_N\Data\BN013124\
 Data File : BN029460.D
 Acq On : 31 Jan 2024 22:23
 Operator : MA/JU
 Sample : P1262-07
 Misc :
 ALS Vial : 10 Sample Multiplier: 1

Instrument :
 BNA_N
 ClientSampleId :
 BP-VPB-195-EB-20240125

Quant Time: Feb 01 01:53:36 2024
 Quant Method : Z:\svoasrv\HPCHEM1\BNA_N\Methods\8270-SIM-BN012924.M
 Quant Title : ASP BNA STANDARDS FOR 5 POINT CALIBRATION
 QLast Update : Thu Feb 01 01:51:59 2024
 Response via : Initial Calibration



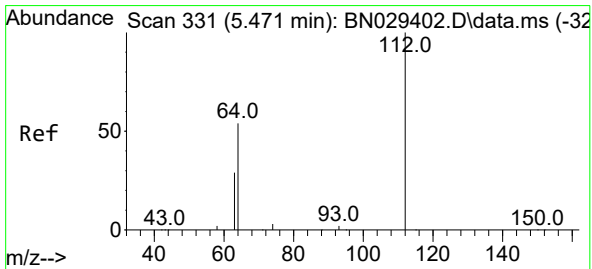
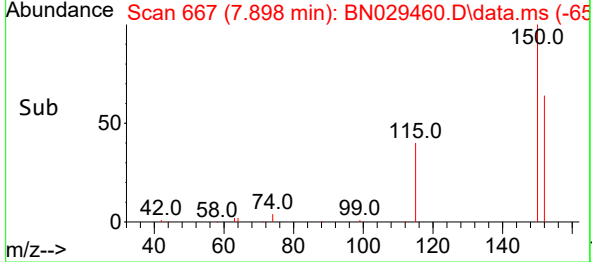
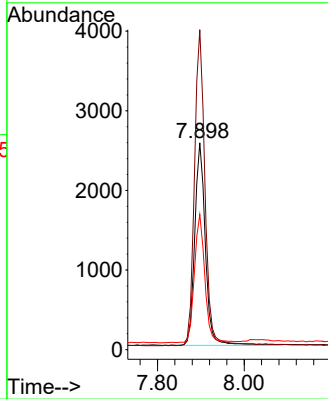
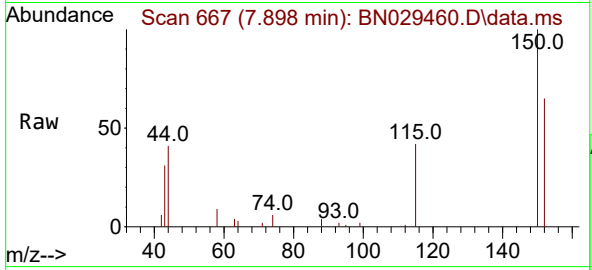


#1
 1,4-Dichlorobenzene-d4
 Concen: 0.400 ng
 RT: 7.898 min Scan# 668
 Delta R.T. -0.000 min
 Lab File: BN029460.D
 Acq: 31 Jan 2024 22:23

Instrument :
 BNA_N
 ClientSampleId :
 BP-VPB-195-EB-20240125

Tgt Ion:152 Resp: 4362

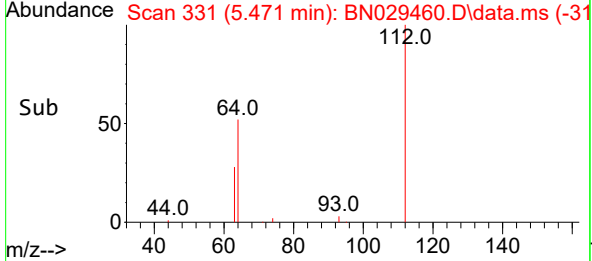
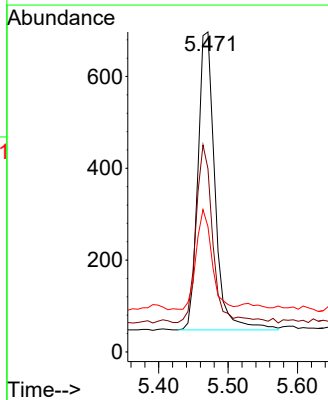
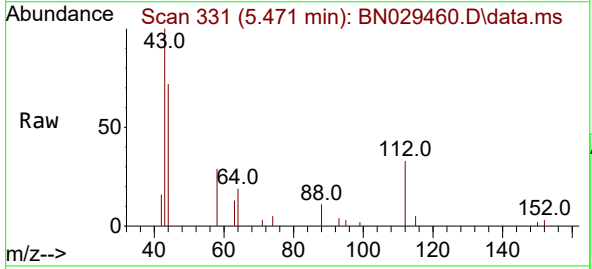
Ion	Ratio	Lower	Upper
152	100		
150	154.6	123.0	184.4
115	65.3	51.4	77.0

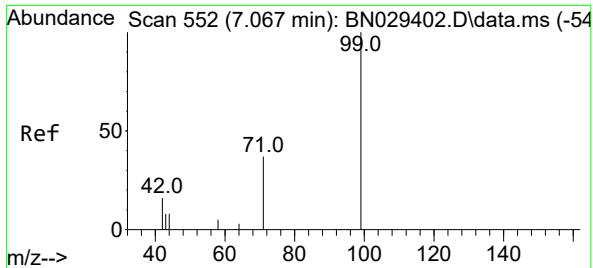


#4
 2-Fluorophenol
 Concen: 0.106 ng
 RT: 5.471 min Scan# 331
 Delta R.T. 0.007 min
 Lab File: BN029460.D
 Acq: 31 Jan 2024 22:23

Tgt Ion:112 Resp: 1108

Ion	Ratio	Lower	Upper
112	100		
64	58.1	47.2	70.8
63	30.5	25.8	38.6

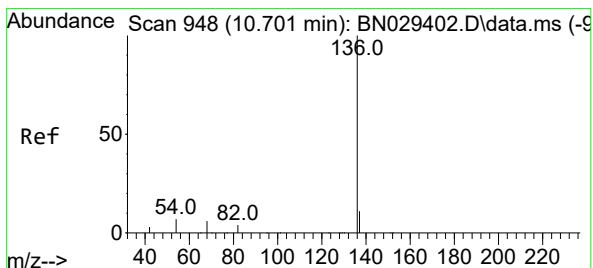
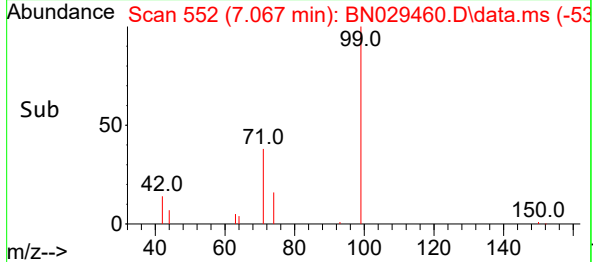
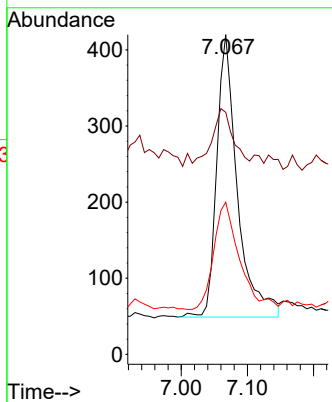
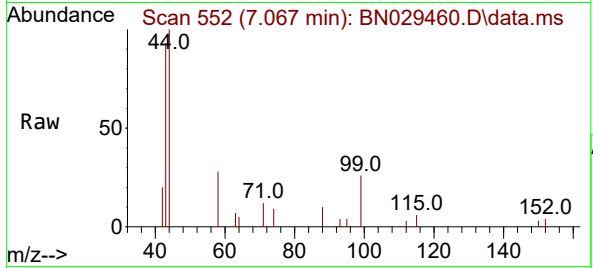




#5
 Phenol-d6
 Concen: 0.067 ng
 RT: 7.067 min Scan# 51
 Delta R.T. 0.007 min
 Lab File: BN029460.D
 Acq: 31 Jan 2024 22:23

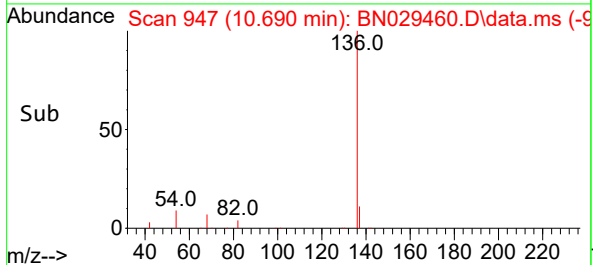
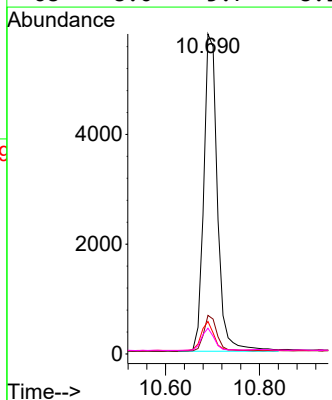
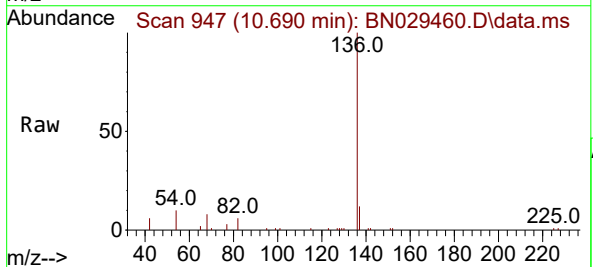
Instrument :
 BNA_N
 ClientSampleId :
 BP-VPB-195-EB-20240125

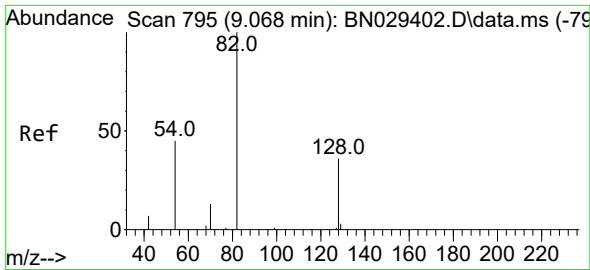
Tgt Ion	Resp	Lower	Upper
99	100		
42	19.4	16.9	25.3
71	47.3	30.0	45.0



#7
 Naphthalene-d8
 Concen: 0.400 ng
 RT: 10.690 min Scan# 947
 Delta R.T. -0.000 min
 Lab File: BN029460.D
 Acq: 31 Jan 2024 22:23

Tgt Ion	Resp	Lower	Upper
136	100		
137	12.1	9.7	14.5
54	10.2	6.6	10.0
68	8.0	5.7	8.5



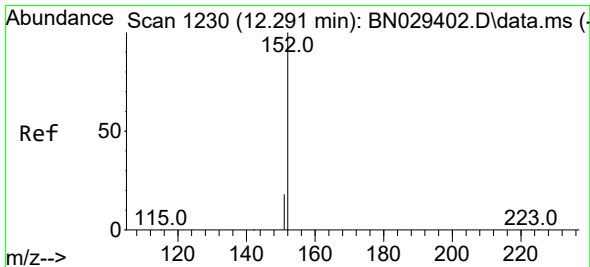
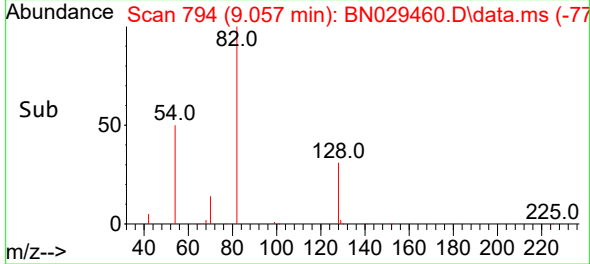
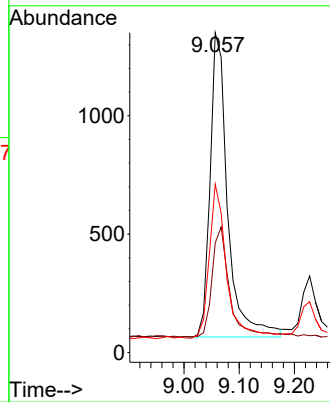
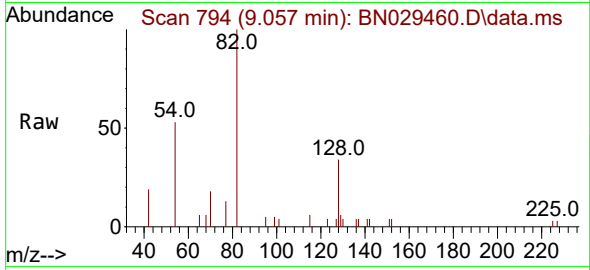


#8
 Nitrobenzene-d5
 Concen: 0.292 ng
 RT: 9.057 min Scan# 795
 Delta R.T. -0.000 min
 Lab File: BN029460.D
 Acq: 31 Jan 2024 22:23

Instrument :
 BNA_N
 ClientSampleId :
 BP-VPB-195-EB-20240125

Tgt Ion: 82 Resp: 2843

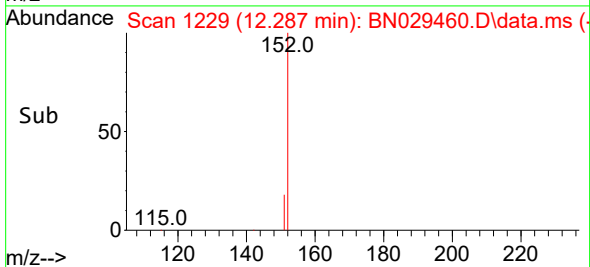
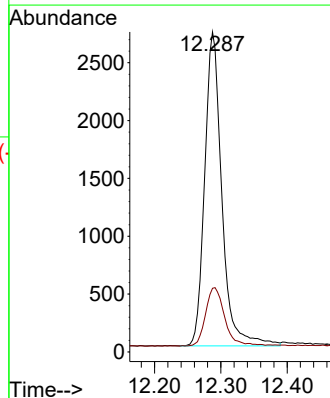
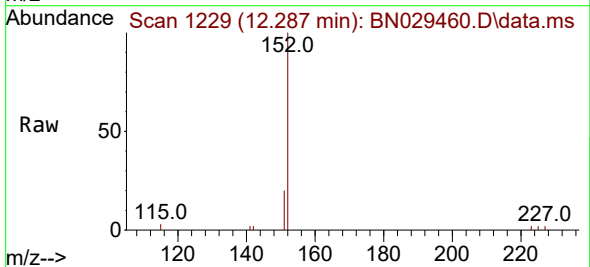
Ion	Ratio	Lower	Upper
82	100		
128	34.3	31.6	47.4
54	52.7	38.2	57.4

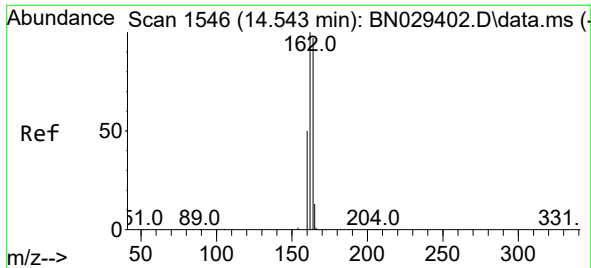


#11
 2-Methylnaphthalene-d10
 Concen: 0.307 ng
 RT: 12.287 min Scan# 1229
 Delta R.T. -0.000 min
 Lab File: BN029460.D
 Acq: 31 Jan 2024 22:23

Tgt Ion: 152 Resp: 4887

Ion	Ratio	Lower	Upper
152	100		
151	20.8	17.1	25.7



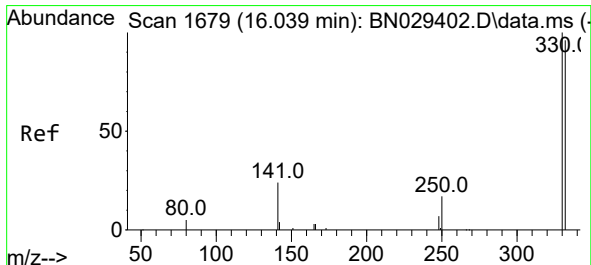
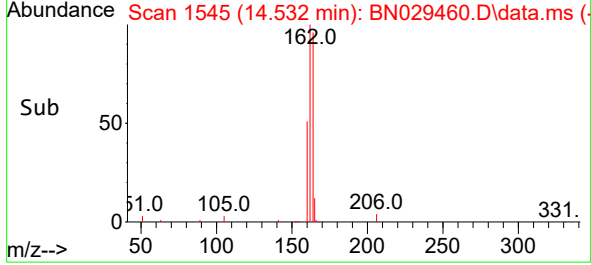
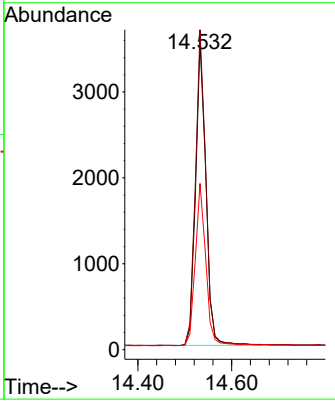
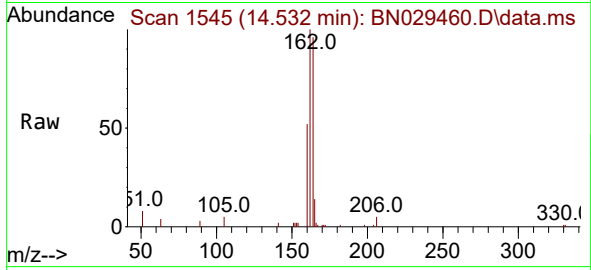


#13
 Acenaphthene-d10
 Concen: 0.400 ng
 RT: 14.532 min Scan# 11
 Delta R.T. -0.000 min
 Lab File: BN029460.D
 Acq: 31 Jan 2024 22:23

Instrument : BNA_N
 ClientSampleId : BP-VPB-195-EB-20240125

Tgt Ion:164 Resp: 5452

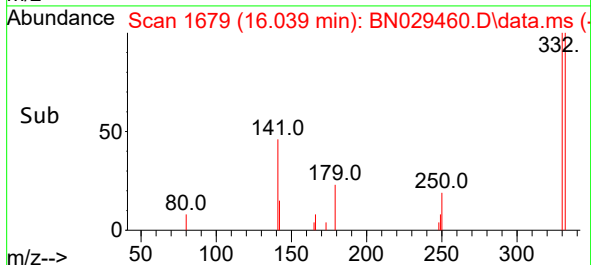
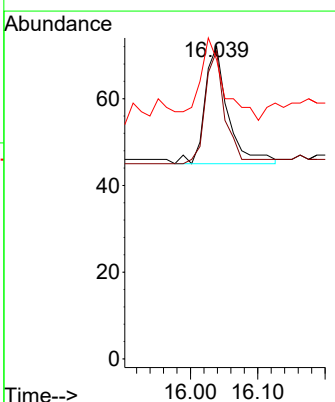
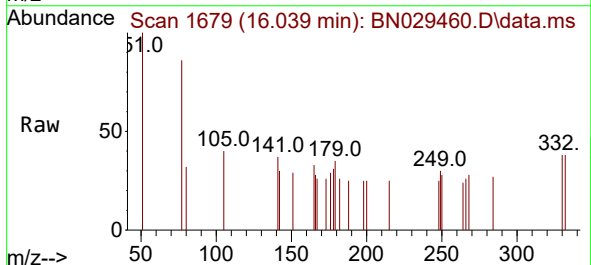
Ion	Ratio	Lower	Upper
164	100		
162	103.8	82.6	123.8
160	54.0	41.5	62.3

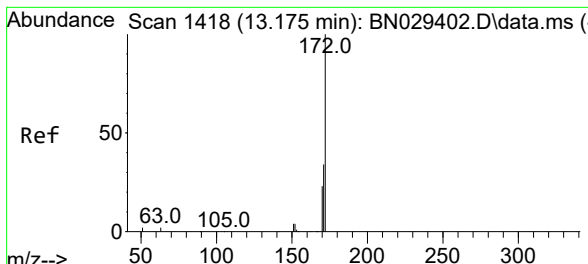


#14
 2,4,6-Tribromophenol
 Concen: 0.037 ng
 RT: 16.039 min Scan# 1679
 Delta R.T. 0.012 min
 Lab File: BN029460.D
 Acq: 31 Jan 2024 22:23

Tgt Ion:330 Resp: 65

Ion	Ratio	Lower	Upper
330	100		
332	83.1	76.0	114.0
141	69.2	43.4	65.2#



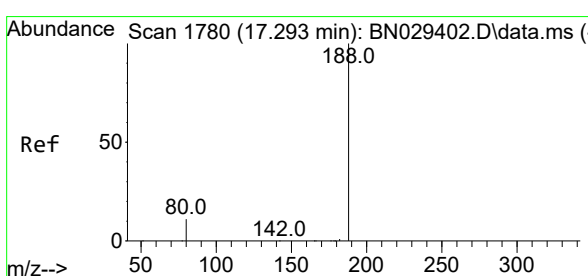
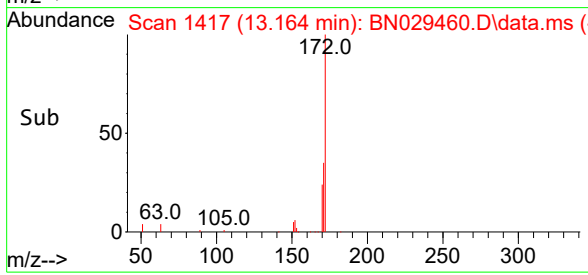
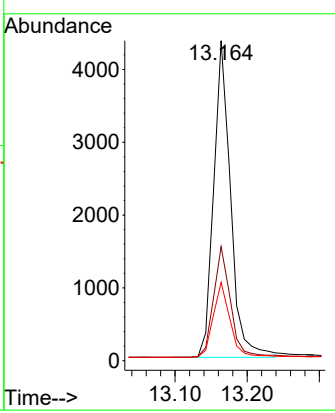
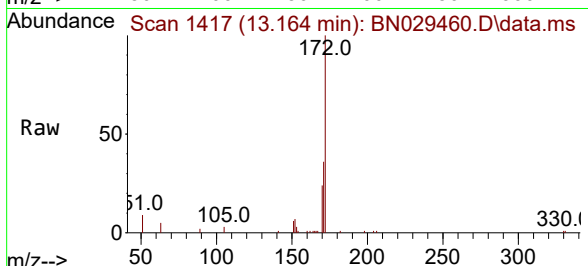


#15
 2-Fluorobiphenyl
 Concen: 0.302 ng
 RT: 13.164 min Scan# 14
 Delta R.T. -0.000 min
 Lab File: BN029460.D
 Acq: 31 Jan 2024 22:23

Instrument : BNA_N
 ClientSampleId : BP-VPB-195-EB-20240125

Tgt Ion:172 Resp: 7065

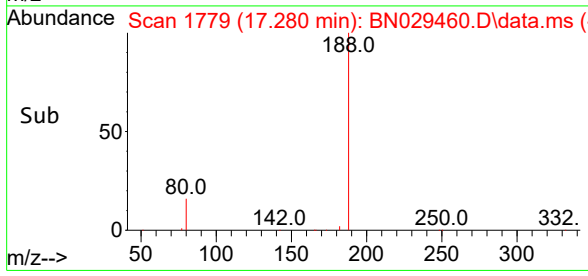
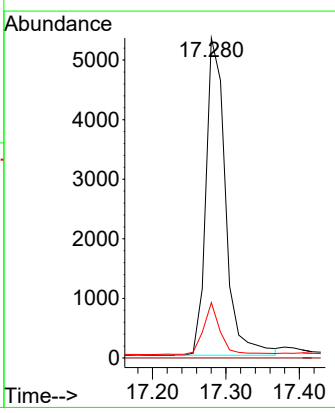
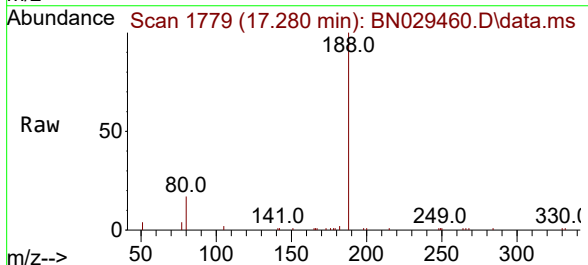
Ion	Ratio	Lower	Upper
172	100		
171	35.6	28.0	42.0
170	24.5	18.7	28.1

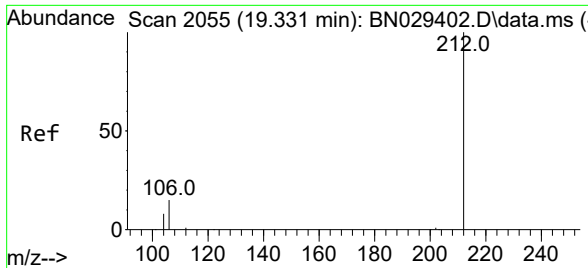


#19
 Phenanthrene-d10
 Concen: 0.400 ng
 RT: 17.280 min Scan# 1779
 Delta R.T. -0.000 min
 Lab File: BN029460.D
 Acq: 31 Jan 2024 22:23

Tgt Ion:188 Resp: 9824

Ion	Ratio	Lower	Upper
188	100		
94	0.0	0.0	0.0
80	17.3	10.0	15.0



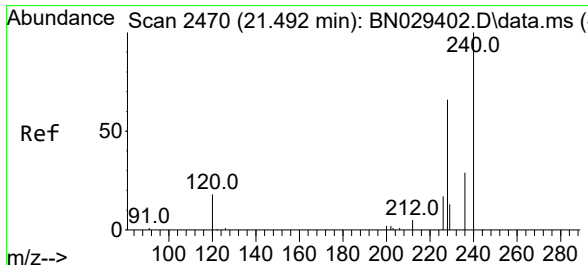
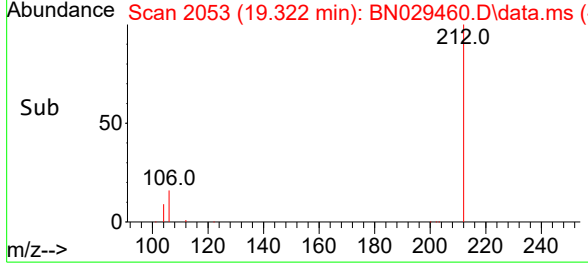
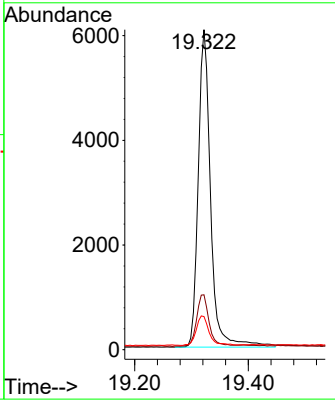
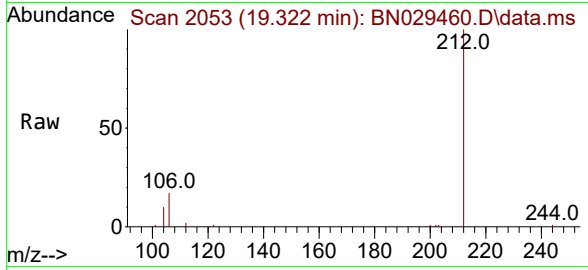


#27
 Fluoranthene-d10
 Concen: 0.384 ng
 RT: 19.322 min Scan# 2053
 Delta R.T. -0.000 min
 Lab File: BN029460.D
 Acq: 31 Jan 2024 22:23

Instrument : BNA_N
 ClientSampleId : BP-VPB-195-EB-20240125

Tgt Ion:212 Resp: 9147

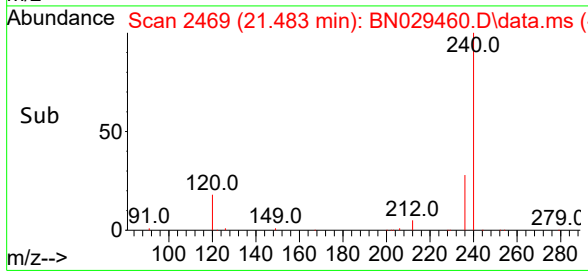
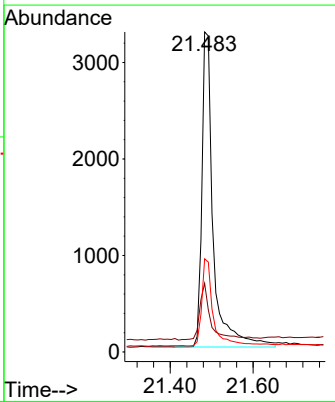
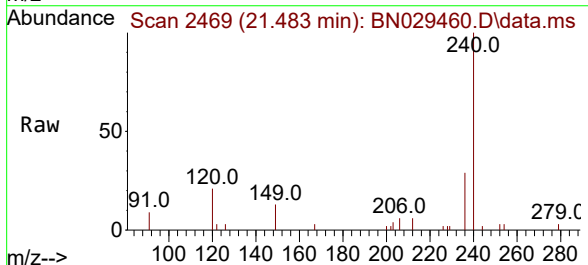
Ion	Ratio	Lower	Upper
212	100		
106	16.7	13.2	19.8
104	9.7	7.7	11.5

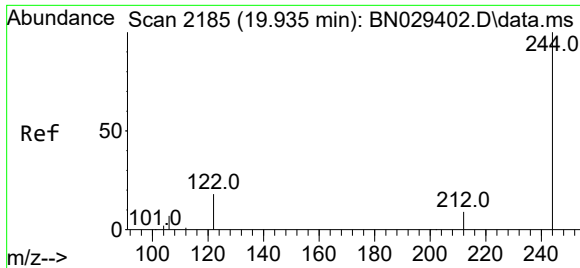


#29
 Chrysene-d12
 Concen: 0.400 ng
 RT: 21.483 min Scan# 2469
 Delta R.T. -0.009 min
 Lab File: BN029460.D
 Acq: 31 Jan 2024 22:23

Tgt Ion:240 Resp: 6246

Ion	Ratio	Lower	Upper
240	100		
120	21.4	16.7	25.1
236	29.1	23.9	35.9



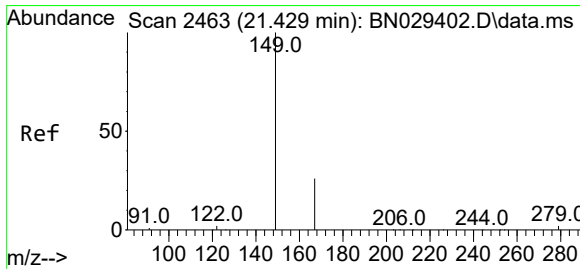
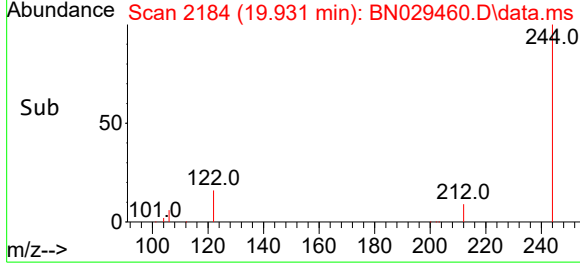
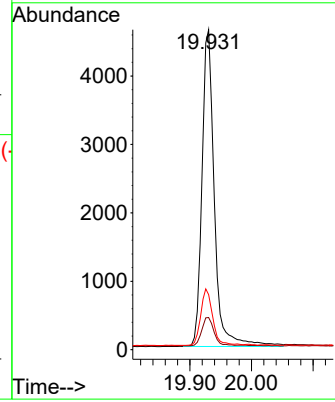
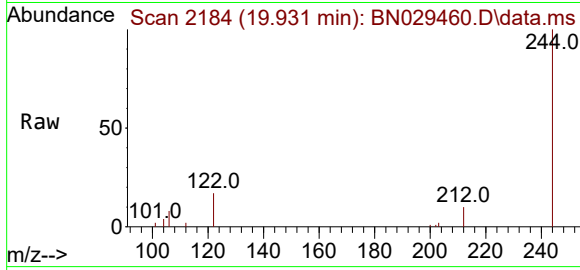


#31
 Terphenyl-d14
 Concen: 0.418 ng
 RT: 19.931 min Scan# 2184
 Delta R.T. -0.000 min
 Lab File: BN029460.D
 Acq: 31 Jan 2024 22:23

Instrument : BNA_N
 ClientSampleId : BP-VPB-195-EB-20240125

Tgt Ion:244 Resp: 6484

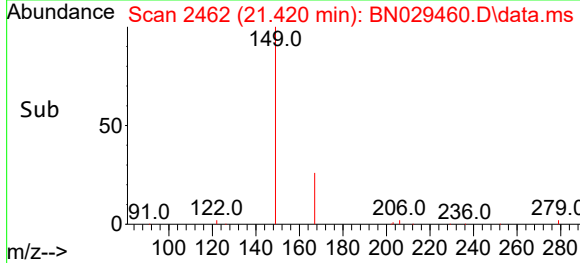
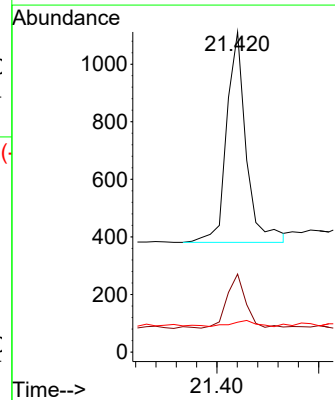
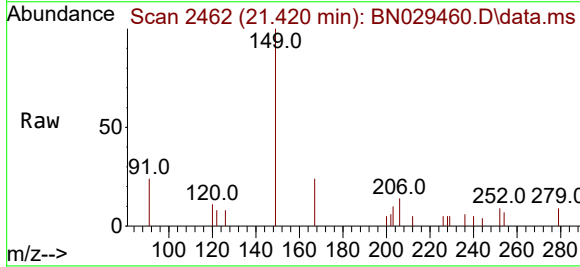
Ion	Ratio	Lower	Upper
244	100		
212	10.1	8.2	12.4
122	17.2	15.6	23.4

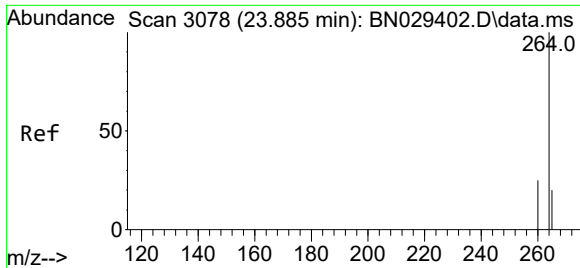


#34
 Bis(2-ethylhexyl)phthalate
 Concen: 0.067 ng
 RT: 21.420 min Scan# 2462
 Delta R.T. -0.000 min
 Lab File: BN029460.D
 Acq: 31 Jan 2024 22:23

Tgt Ion:149 Resp: 972

Ion	Ratio	Lower	Upper
149	100		
167	26.3	20.1	30.1
279	3.7	2.5	3.7





#35
 Perylene-d12
 Concen: 0.400 ng
 RT: 23.867 min Scan# 30
 Delta R.T. -0.003 min
 Lab File: BN029460.D
 Acq: 31 Jan 2024 22:23

Instrument :
 BNA_N
 ClientSampleId :
 BP-VPB-195-EB-20240125

Tgt Ion:264 Resp: 5732

Ion	Ratio	Lower	Upper
264	100		
260	27.9	21.2	31.8
265	49.7	41.5	62.3

