

Data Path : Z:\HPCHEM1\BNA N\Data\BN020118\
 Data File : BN000002.D
 Acq On : 01 Feb 2018 15:17
 Operator :
 Sample : SSTDICC2.5
 Misc :
 ALS Vial : 2 Sample Multiplier: 1

Instrument :
 BNA_N
 ClientSampleId :
 SSTDICC2.5

Manual Integrations
 APPROVED

Sohil
 2/6/2018 5:13:47 PM

Quant Time: Feb 01 18:25:48 2018
 Quant Method : Z:\HPCHEM1\BNA N\METHODS\8270-BN020118.M
 Quant Title : ASP BNA STANDARDS FOR 5 POINT CALIBRATION
 QLast Update : Thu Feb 01 17:51:05 2018
 Response via : Initial Calibration

Internal Standards	R.T.	QIon	Response	Conc	Units	Dev(Min)
1) 1,4-Dichlorobenzene-d4	8.481	152	164295	20.00	ng	0.00
21) Naphthalene-d8	11.322	136	808473	20.00	ng	0.00
38) Acenaphthene-d10	15.093	164	501214	20.00	ng	0.00
63) Phenanthrene-d10	17.810	188	1245814	20.00	ng	0.00
75) Chrysene-d12	21.939	240	1554718	20.00	ng	-0.01
86) Perylene-d12	24.439	264	1719681	20.00	ng	-0.02

System Monitoring Compounds

5) 2-Fluorophenol	5.952	112	56943	6.96	ng	0.00
7) Phenol-d6	7.593	99	79997	7.33	ng	0.00
23) Nitrobenzene-d5	9.658	82	56099	4.33	ng	0.00
41) 2,4,6-Tribromophenol	0.000	330	0d	0.00	ng	
44) 2-Fluorobiphenyl	13.722	172	204357	4.85	ng	0.00
78) Terphenyl-d14	20.375	244	318701	4.39	ng	0.00

Target Compounds

Target Compounds	R.T.	QIon	Response	Conc	Units	Qvalue
2) 1,4-Dioxane	3.664	88	13287	4.83	ng	# 81
3) Pyridine	4.193	79	25941m	3.49	ng	
4) n-Nitrosodimethylamine	4.023	42	9081	2.35	ng	# 43
6) Aniline	7.781	93	54591	4.01	ng	98
8) 2-Chlorophenol	8.028	128	29551	3.06	ng	92
10) Phenol	7.622	94	40180	3.88	ng	86
11) bis(2-Chloroethyl)ether	7.881	93	35104	4.44	ng	# 82
12) 1,3-Dichlorobenzene	8.369	146	36130	2.76	ng	97
13) 1,4-Dichlorobenzene	8.516	146	38666	2.95	ng	95
14) 1,2-Dichlorobenzene	8.840	146	36400	2.84	ng	87
15) Benzyl Alcohol	8.710	79	29963	3.33	ng	93
16) 2,2'-oxybis(1-Chloropr...	9.016	45	38187	5.10	ng	70
17) 2-Methylphenol	8.905	107	29566	3.51	ng	# 89
18) Hexachloroethane	9.587	117	12414	2.82	ng	# 81
19) n-Nitroso-di-n-propyla...	9.281	70	27229	3.76	ng	# 91
20) 3+4-Methylphenols	9.234	107	40254	3.41	ng	86
22) Acetophenone	9.310	105	63001	3.32	ng	# 93
24) Nitrobenzene	9.699	77	28696	2.29	ng	94
25) Isophorone	10.222	82	76530	3.47	ng	98
27) 2,4-Dimethylphenol	10.457	122	35460	3.27	ng	87
28) bis(2-Chloroethoxy)met...	10.705	93	45791	3.79	ng	96
29) 2,4-Dichlorophenol	10.952	162	23316	1.62	ng	93
30) 1,2,4-Trichlorobenzene	11.175	180	34549	1.80	ng	96
31) Naphthalene	11.375	128	123402	3.13	ng	97
33) 4-Chloroaniline	11.469	127	50847	2.89	ng	96
34) Hexachlorobutadiene	11.652	225	17019	1.14	ng	93
35) Caprolactam	12.193	113	10117	2.45	ng	# 80
36) 4-Chloro-3-methylphenol	12.546	107	35781	2.62	ng	95
37) 2-Methylnaphthalene	12.951	142	84308	2.54	ng	92
39) 1,2,4,5-Tetrachloroben...	13.304	216	37538	1.60	ng	# 95
40) Hexachlorocyclopentadiene	13.281	237	10398	0.71	ng	87
42) 2,4,6-Trichlorophenol	13.534	196	18096	1.42	ng	94
43) 2,4,5-Trichlorophenol	13.598	196	19899	1.34	ng	# 89
45) 1,1'-Biphenyl	13.934	154	122677	2.90	ng	97

Data Path : Z:\HPCHEM1\BNA N\Data\BN020118\
 Data File : BN000002.D
 Acq On : 01 Feb 2018 15:17
 Operator :
 Sample : SSTDICC2.5
 Misc :
 ALS Vial : 2 Sample Multiplier: 1

Instrument :
 BNA_N
 ClientSampleId :
 SSTDICC2.5

Manual Integrations
 APPROVED

Sohil
 2/6/2018 5:13:47 PM

Quant Time: Feb 01 18:25:48 2018
 Quant Method : Z:\HPCHEM1\BNA N\METHODS\8270-BN020118.M
 Quant Title : ASP BNA STANDARDS FOR 5 POINT CALIBRATION
 QLast Update : Thu Feb 01 17:51:05 2018
 Response via : Initial Calibration

Internal Standards	R.T.	QIon	Response	Conc	Units	Dev(Min)
46) 2-Chloronaphthalene	13.981	162	89222	2.69	ng	95
48) Acenaphthylene	14.816	152	142568	2.84	ng	98
49) Dimethylphthalate	14.528	163	117285	2.54	ng	99
51) Acenaphthene	15.151	154	95226	2.74	ng	97
54) Dibenzofuran	15.481	168	140677	2.73	ng	95
57) Fluorene	16.122	166	118448	2.77	ng	91
58) 2,3,4,6-Tetrachlorophenol	15.692	232	16525	1.13	ng #	82
59) Diethylphthalate	15.875	149	119386	2.65	ng	96
60) 4-Chlorophenyl-phenyle...	16.110	204	52084	1.93	ng #	86
62) Azobenzene	16.404	77	118002	4.39	ng	91
65) n-Nitrosodiphenylamine	16.316	169	99151	2.67	ng	98
66) 4-Bromophenyl-phenylether	17.004	248	28326	1.53	ng #	88
67) Hexachlorobenzene	17.116	284	35230	1.72	ng #	82
68) Atrazine	17.245	200	27833	1.74	ng	95
70) Phenanthrene	17.851	178	203467	2.93	ng	99
71) Anthracene	17.945	178	189772	2.74	ng	97
72) Carbazole	18.198	167	198682	3.25	ng #	95
73) Di-n-butylphthalate	18.745	149	188686	2.79	ng #	96
74) Fluoranthene	19.828	202	229183	2.52	ng	94
76) Benzidine	19.998	184	95361	3.12	ng	98
77) Pyrene	20.186	202	246203	2.58	ng	99
80) Benzo(a)anthracene	21.922	228	250037	2.59	ng	98
81) 3,3'-Dichlorobenzidine	21.839	252	61985	1.66	ng #	90
82) Chrysene	21.975	228	258805	2.78	ng	99
85) Indeno(1,2,3-cd)pyrene	27.015	276	302154	2.57	ng #	85
87) Benzo(b)fluoranthene	23.680	252	251369	2.42	ng #	96
88) Benzo(k)fluoranthene	23.727	252	257719	2.50	ng #	96
89) Benzo(a)pyrene	24.327	252	241366	2.44	ng #	94
90) Dibenzo(a,h)anthracene	27.033	278	254716	2.51	ng #	92
91) Benzo(g,h,i)perylene	27.798	276	257323	2.56	ng #	88

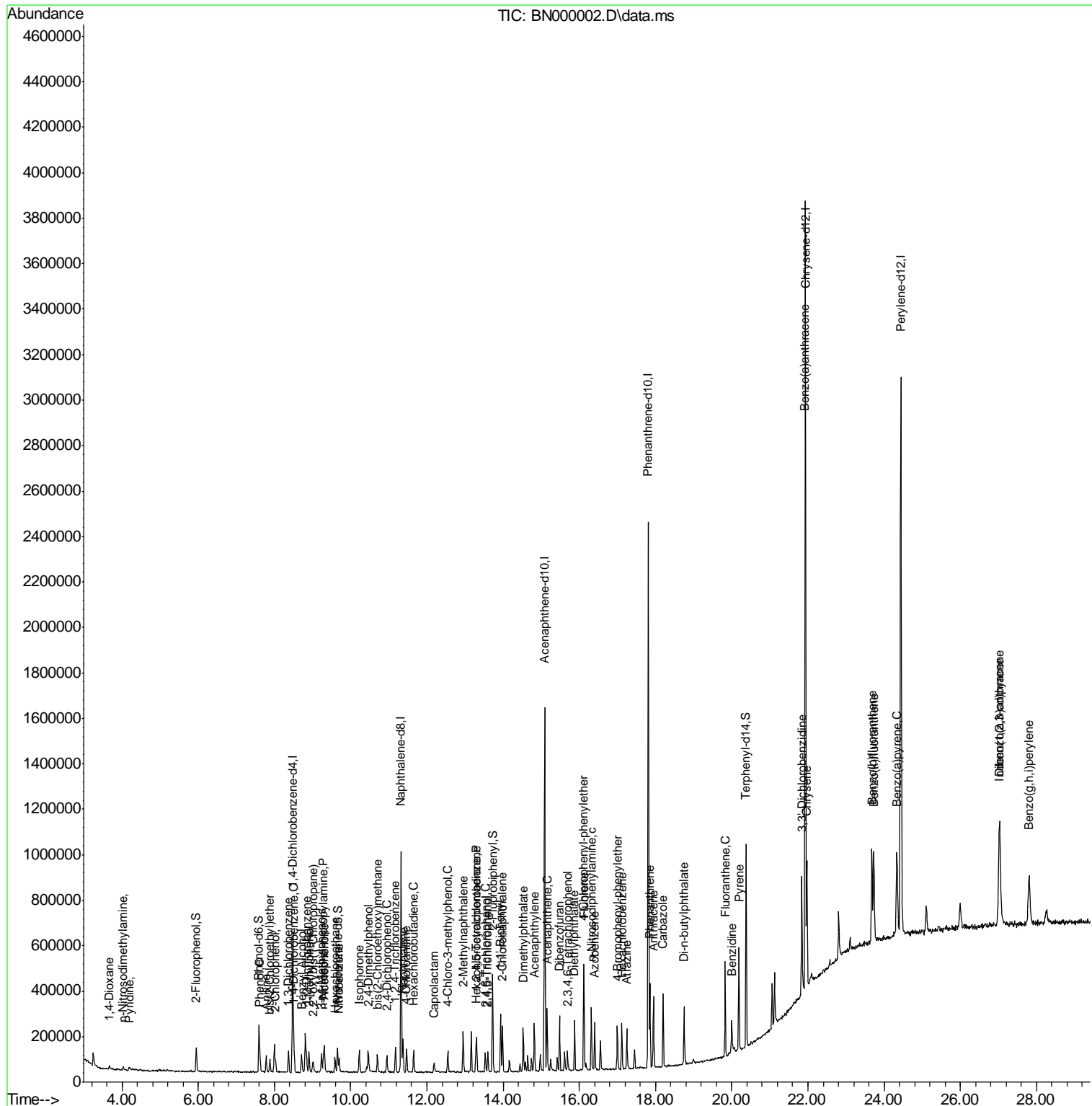
(#) = qualifier out of range (m) = manual integration (+) = signals summed

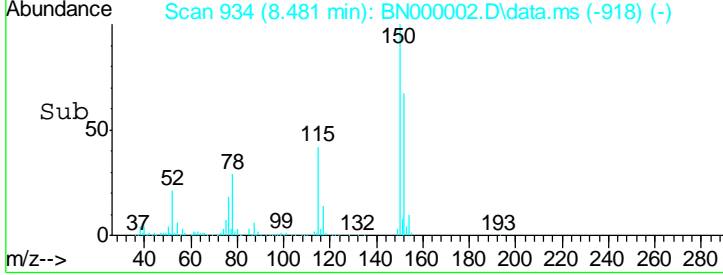
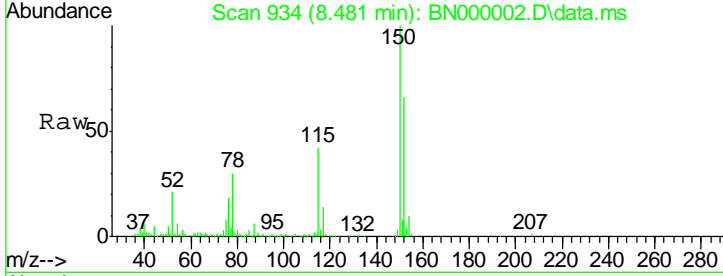
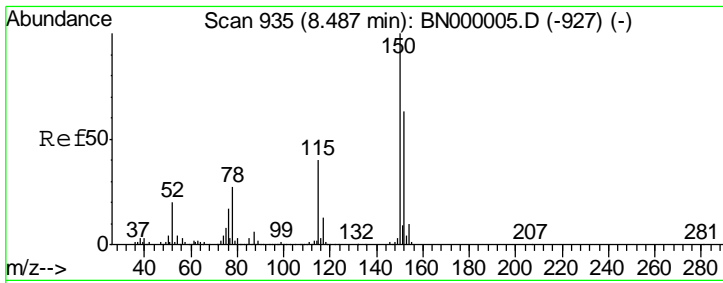
Data Path : Z:\HPCHEM1\BNA N\Data\BN020118\
 Data File : BN000002.D
 Acq On : 01 Feb 2018 15:17
 Operator :
 Sample : SSTDIC2.5
 Misc :
 ALS Vial : 2 Sample Multiplier: 1

Instrument :
 BNA_N
 Client Sampled :
 SSTDIC2.5

Manual Integrations
 APPROVED
 Sohil
 2/6/2018 5:13:47 PM

Quant Time: Feb 01 18:25:48 2018
 Quant Method : Z:\HPCHEM1\BNA N\METHODS\8270-BN020118.M
 Quant Title : ASP BNA STANDARDS FOR 5 POINT CALIBRATION
 QLast Update : Thu Feb 01 17:51:05 2018
 Response via : Initial Calibration



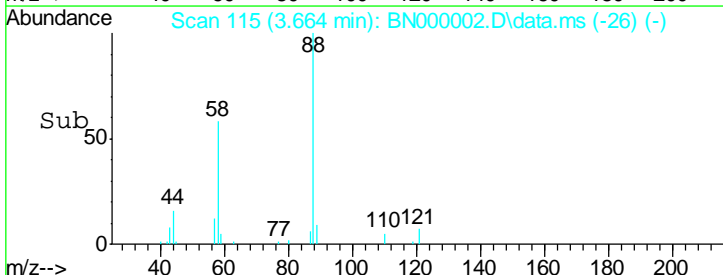
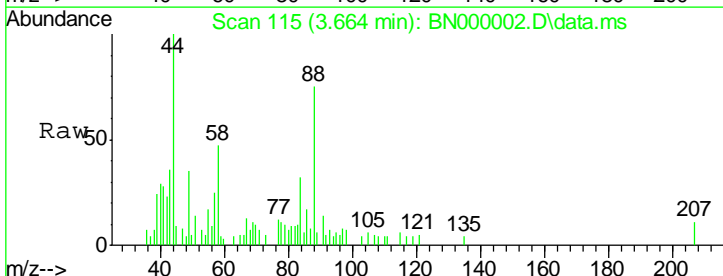
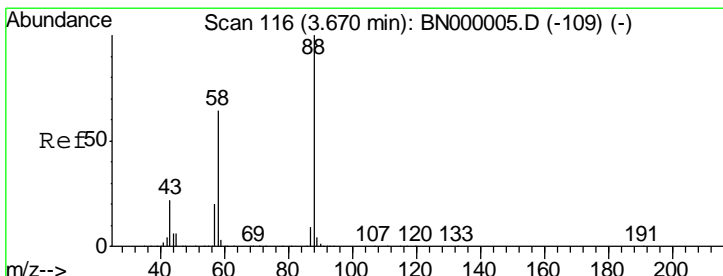
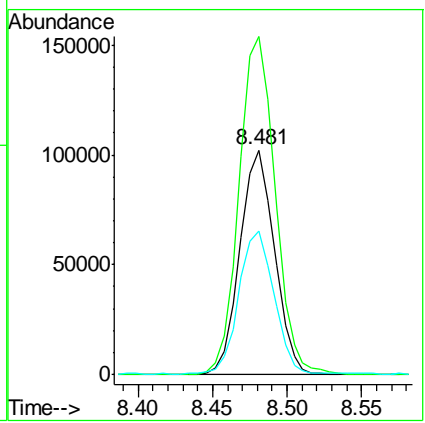


#1
 1,4-Dichlorobenzene-d4
 Concen: 20.00 ng
 RT: 8.481 min Scan# 93
 Delta R.T. -0.006 min
 Lab File: BN000002.D
 Acq: 01 Feb 2018 15:17

Tgt Ion	Ratio	Lower	Upper
152	100		
150	150.5	126.6	189.8
115	63.7	53.0	79.4

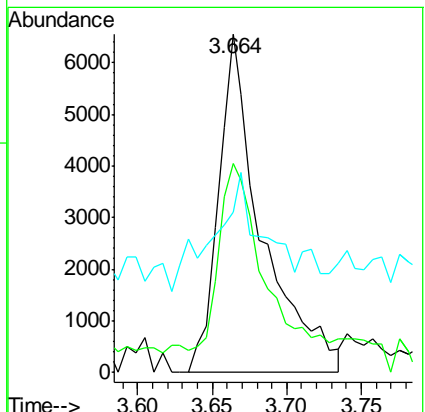
Instrument :
 BNA_N
 ClientSampled :
 SSTDICC2.5

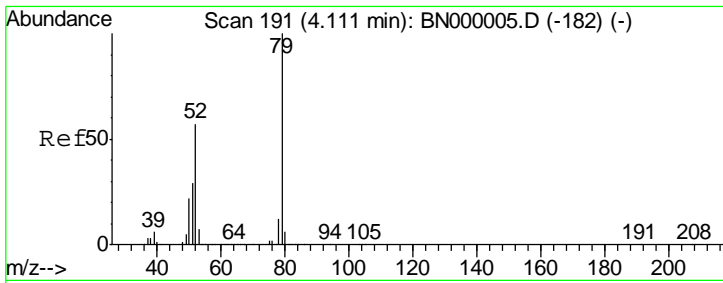
Manual Integrations
APPROVED
 Sohil
 2/6/2018 5:13:47 PM



#2
 1,4-Dioxane
 Concen: 4.83 ng
 RT: 3.664 min Scan# 115
 Delta R.T. -0.006 min
 Lab File: BN000002.D
 Acq: 01 Feb 2018 15:17

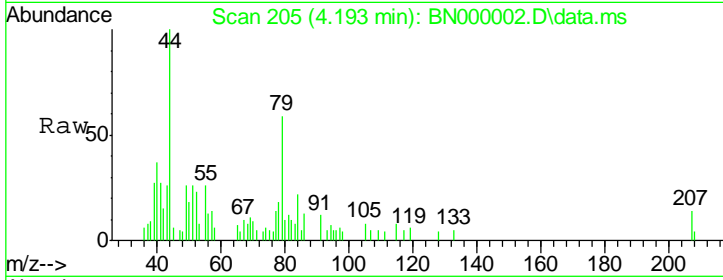
Tgt Ion	Ratio	Lower	Upper
88	100		
58	52.9	52.0	78.0
43	38.7	20.0	30.0#





#3
 Pyridine
 Concen: 3.49 ng/ml
 RT: 4.193 min Scan# 20
 Delta R.T. 0.076 min
 Lab File: BN000002.D
 Acq: 01 Feb 2018 15:17

Instrument :
 BNA_N
 ClientSampled :
 SSTDICC2.5

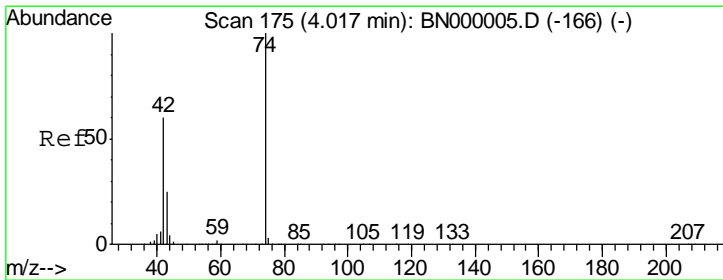
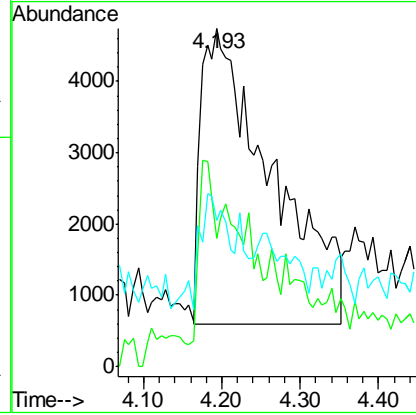
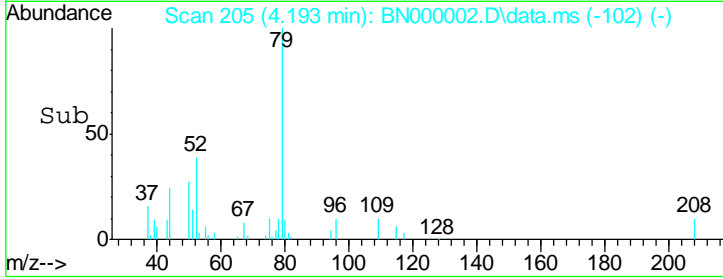


Tgt Ion: 79 Resp: 25941

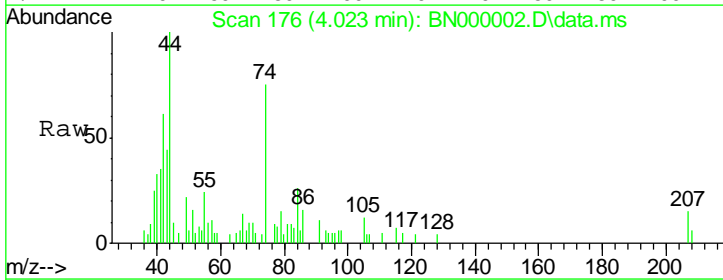
Ion	Ratio	Lower	Upper
79	100		
52	38.1	44.0	66.0#
51	43.4	24.0	36.0#

Manual Integrations
 APPROVED

Sohil
 2/6/2018 5:13:47 PM

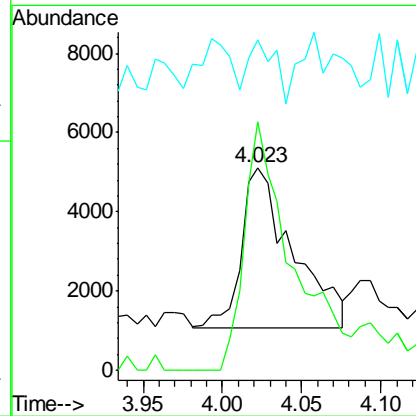
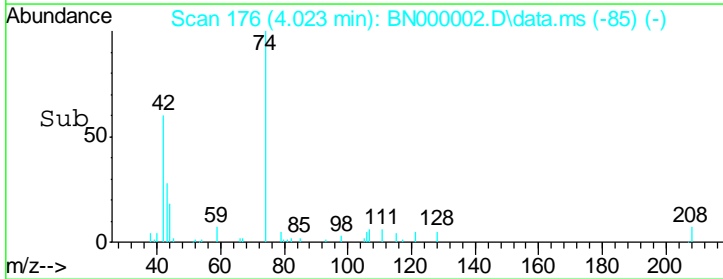


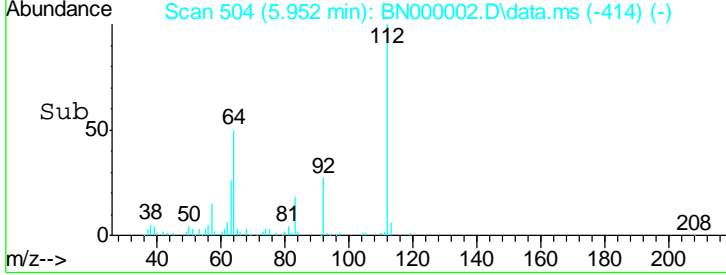
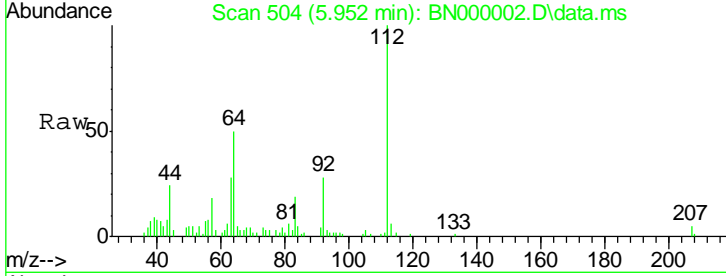
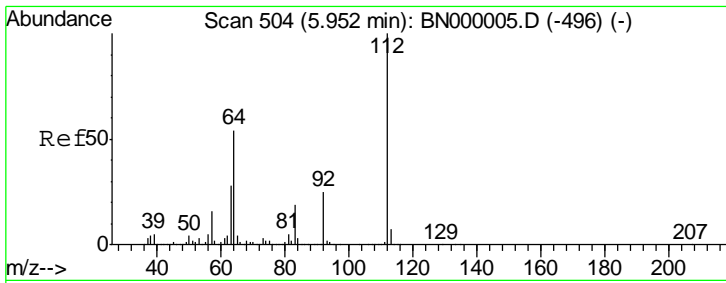
#4
 n-Nitrosodimethylamine
 Concen: 2.35 ng/ml
 RT: 4.023 min Scan# 176
 Delta R.T. 0.006 min
 Lab File: BN000002.D
 Acq: 01 Feb 2018 15:17



Tgt Ion: 42 Resp: 9081

Ion	Ratio	Lower	Upper
42	100		
74	122.4	128.0	192.0#
44	163.3	12.0	18.0#



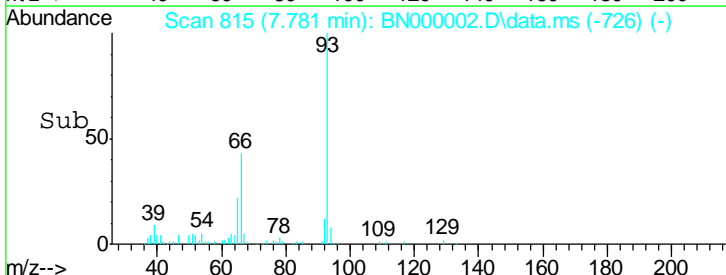
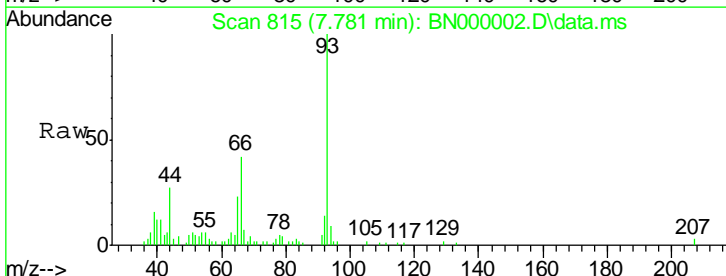
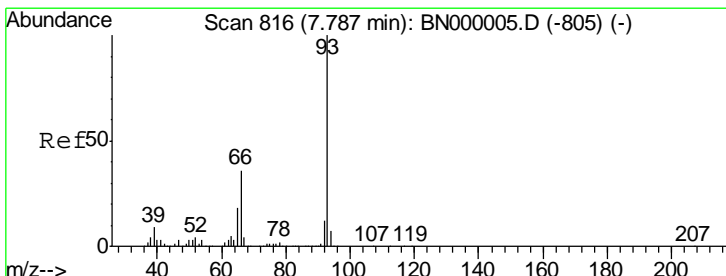
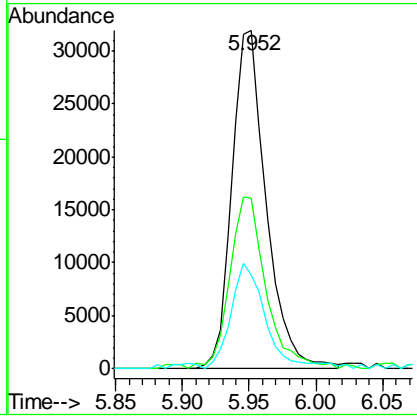


#5
 2-Fluorophenol
 Concen: 6.96 ng
 RT: 5.952 min Scan# 50
 Delta R.T. -0.000 min
 Lab File: BN000002.D
 Acq: 01 Feb 2018 15:17

Tgt Ion	Ratio	Lower	Upper
112	100		
64	50.3	56.3	84.5#
63	27.6	30.1	45.1#

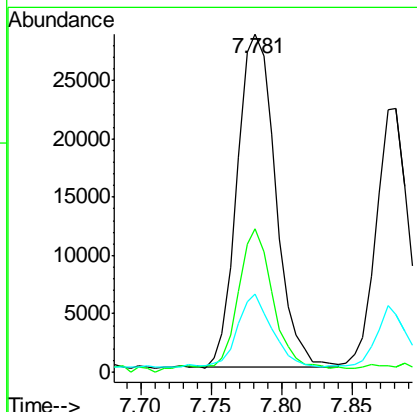
Instrument :
 BNA_N
 ClientSampled :
 SSTDICC2.5

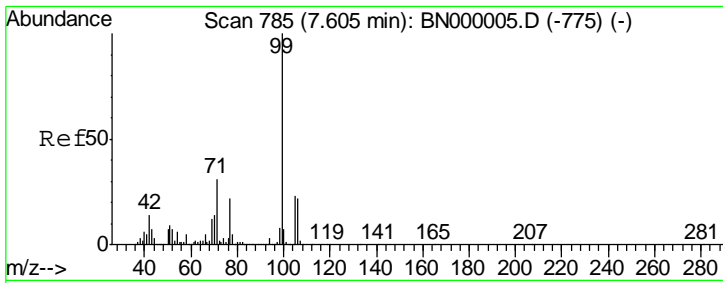
Manual Integrations
APPROVED
 Sohil
 2/6/2018 5:13:47 PM



#6
 Aniline
 Concen: 4.01 ng
 RT: 7.781 min Scan# 815
 Delta R.T. -0.006 min
 Lab File: BN000002.D
 Acq: 01 Feb 2018 15:17

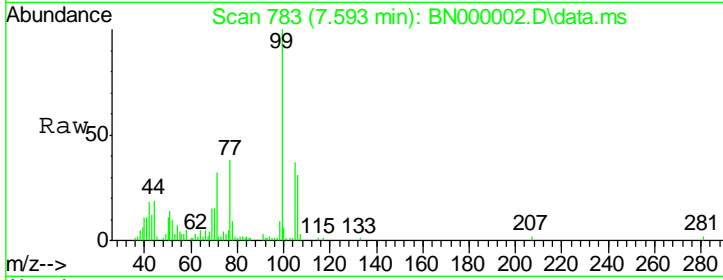
Tgt Ion	Ratio	Lower	Upper
93	100		
66	42.3	33.7	50.5
65	23.2	16.1	24.1





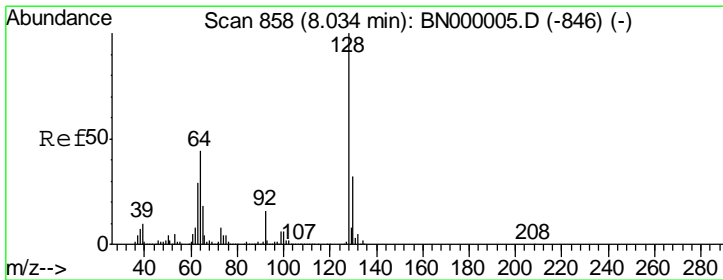
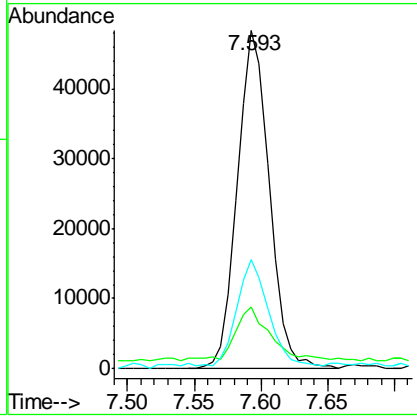
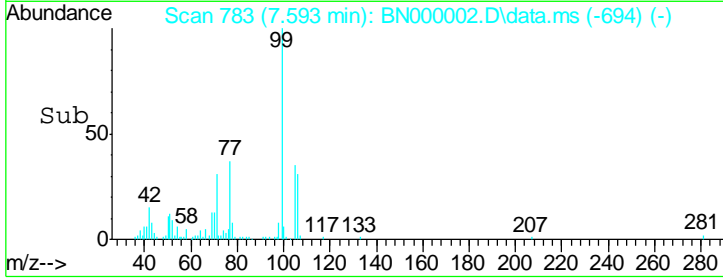
#7
 Phenol-d6
 Concen: 7.33 ng
 RT: 7.593 min Scan# 78
 Delta R.T. -0.006 min
 Lab File: BN000002.D
 Acq: 01 Feb 2018 15:17

Instrument :
 BNA_N
ClientSampled :
 SSTDICC2.5

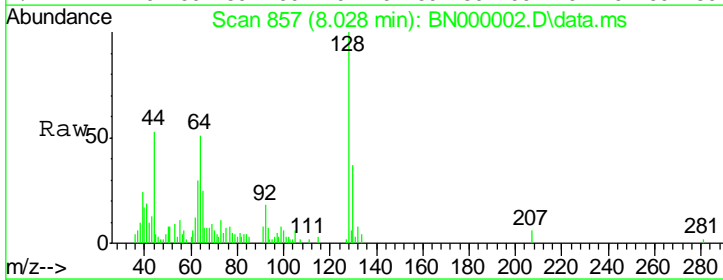


Tgt Ion	Resp	Lower	Upper
99	79997		
99	100		
42	18.1	14.1	21.1
71	32.2	26.1	39.1

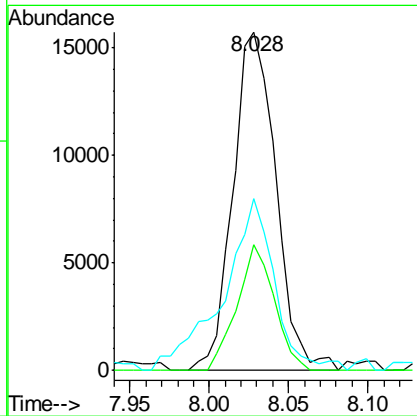
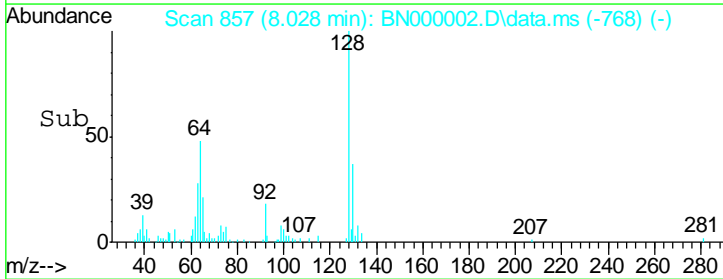
Manual Integrations
APPROVED
 Sohil
 2/6/2018 5:13:47 PM

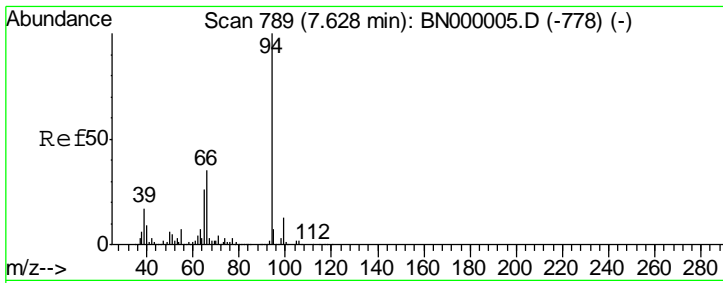


#8
 2-Chlorophenol
 Concen: 3.06 ng
 RT: 8.028 min Scan# 857
 Delta R.T. -0.006 min
 Lab File: BN000002.D
 Acq: 01 Feb 2018 15:17



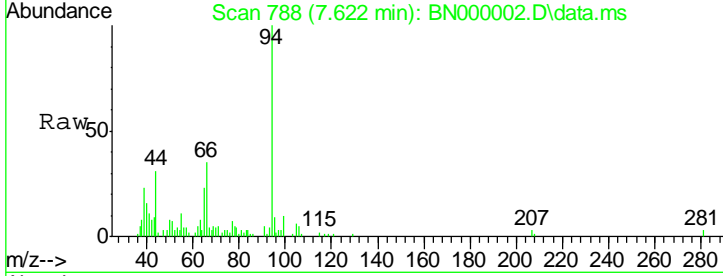
Tgt Ion	Resp	Lower	Upper
128	29551		
128	100		
130	37.2	14.0	54.0
64	50.9	37.7	77.7





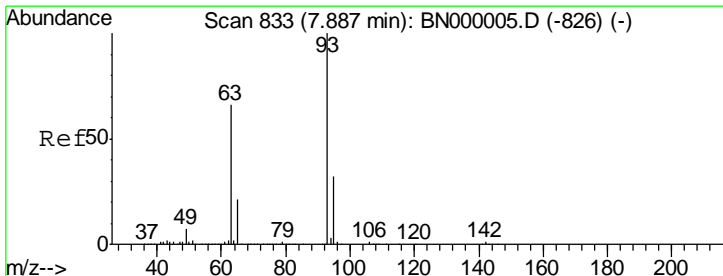
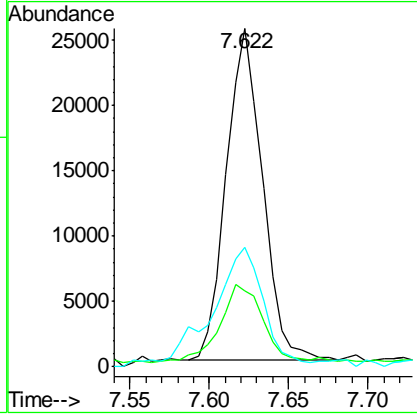
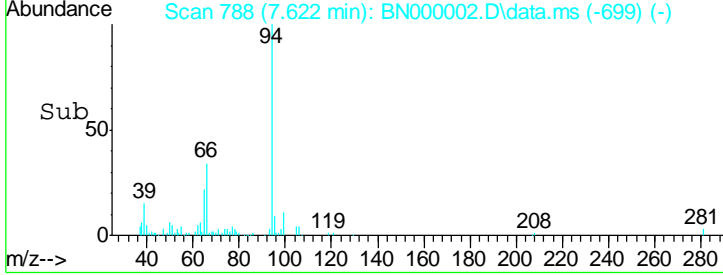
#10
 Phenol
 Concen: 3.88 ng
 RT: 7.622 min Scan# 78
 Delta R.T. -0.006 min
 Lab File: BN000002.D
 Acq: 01 Feb 2018 15:17

Instrument :
 BNA_N
 ClientSampled :
 SSTDICC2.5

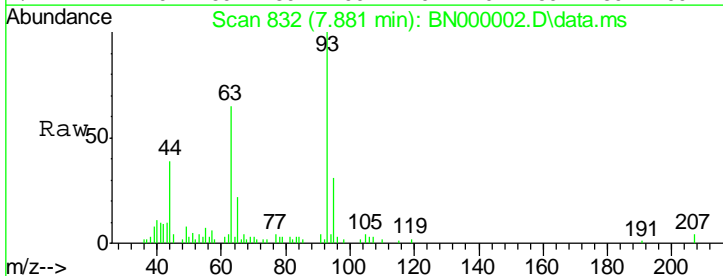


Tgt Ion	Resp	Lower	Upper
94	40180		
65	22.6	11.9	51.9
66	35.1	22.2	62.2

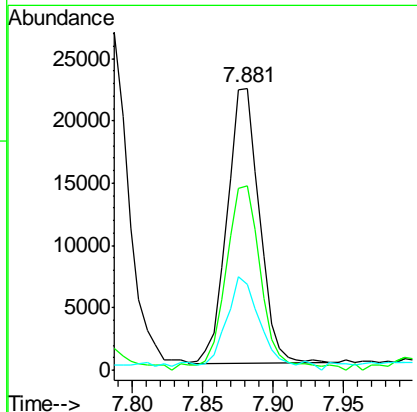
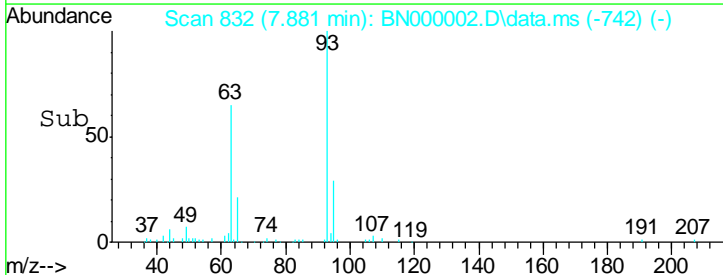
Manual Integrations
APPROVED
 Sohil
 2/6/2018 5:13:47 PM

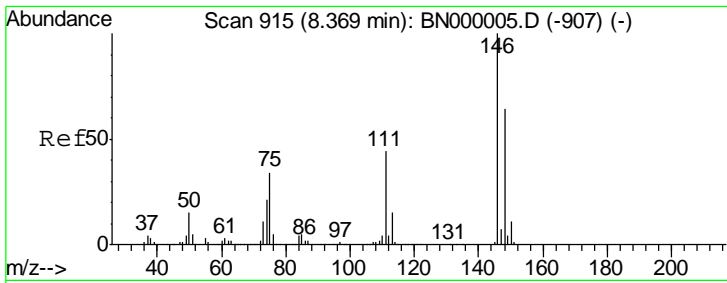


#11
 bis(2-Chloroethyl)ether
 Concen: 4.44 ng
 RT: 7.881 min Scan# 832
 Delta R.T. -0.000 min
 Lab File: BN000002.D
 Acq: 01 Feb 2018 15:17



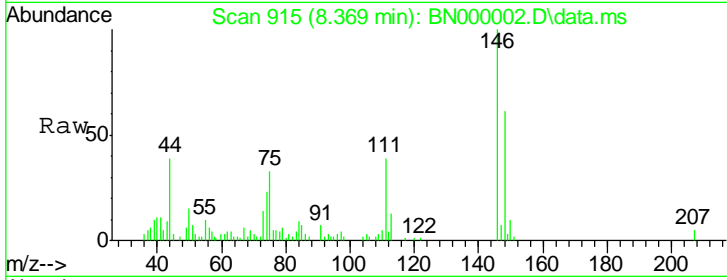
Tgt Ion	Resp	Lower	Upper
93	35104		
63	65.4	67.1	107.1#
95	30.6	11.5	51.5





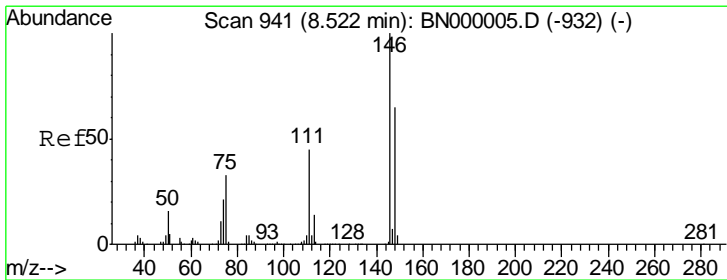
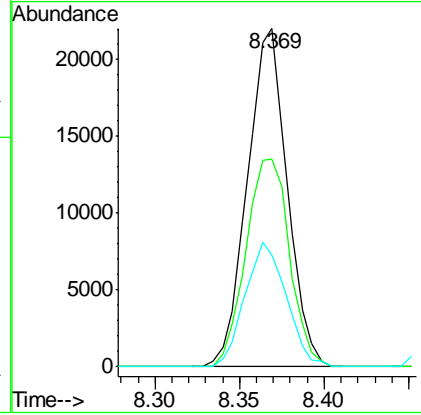
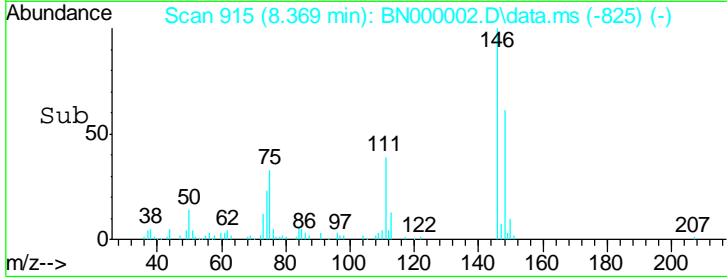
#12
 1,3-Dichlorobenzene
 Concen: 2.76 ng
 RT: 8.369 min Scan# 91
 Delta R.T. -0.000 min
 Lab File: BN000002.D
 Acq: 01 Feb 2018 15:17

Instrument :
 BNA_N
 ClientSampled :
 SSTDICC2.5

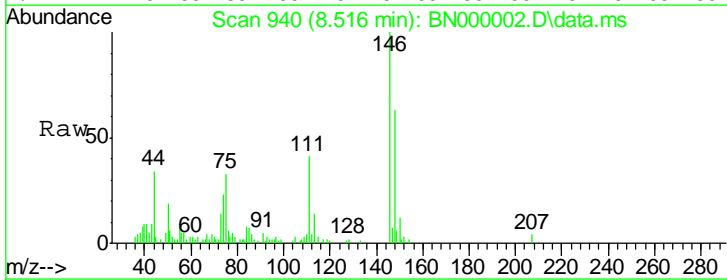


Tgt Ion	Ratio	Lower	Upper
146	100		
148	61.3	51.4	77.2
75	32.9	26.6	39.8

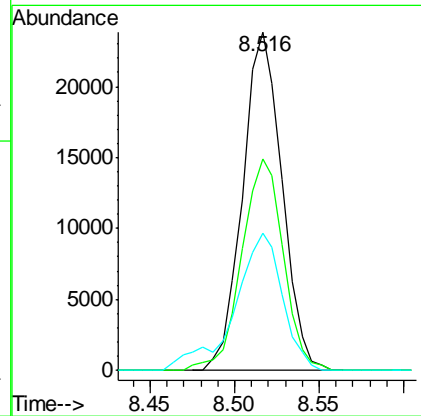
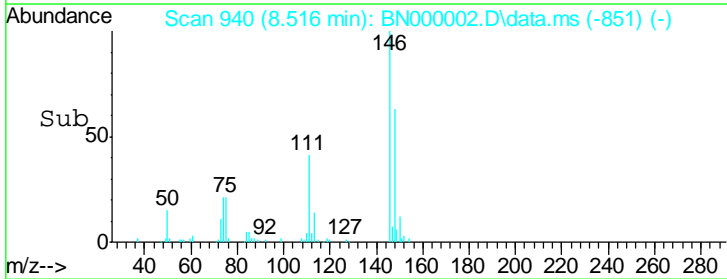
Manual Integrations
APPROVED
 Sohil
 2/6/2018 5:13:47 PM

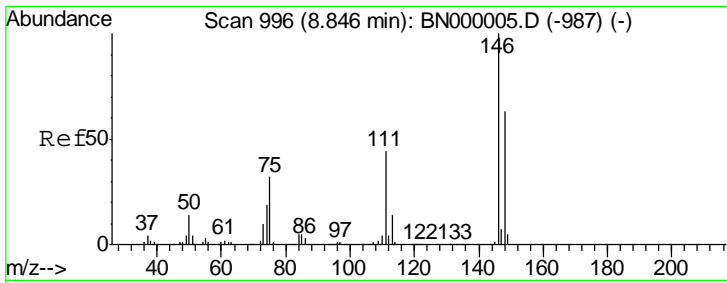


#13
 1,4-Dichlorobenzene
 Concen: 2.95 ng
 RT: 8.516 min Scan# 940
 Delta R.T. -0.006 min
 Lab File: BN000002.D
 Acq: 01 Feb 2018 15:17



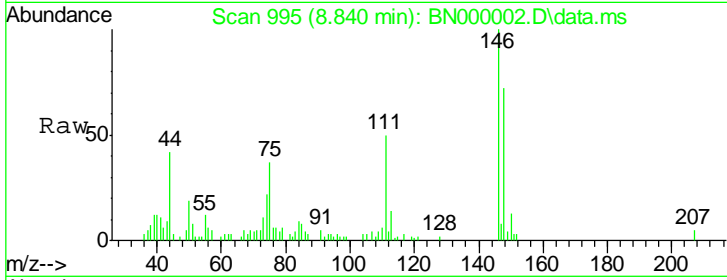
Tgt Ion	Ratio	Lower	Upper
146	100		
148	62.7	53.7	80.5
111	40.5	35.2	52.8





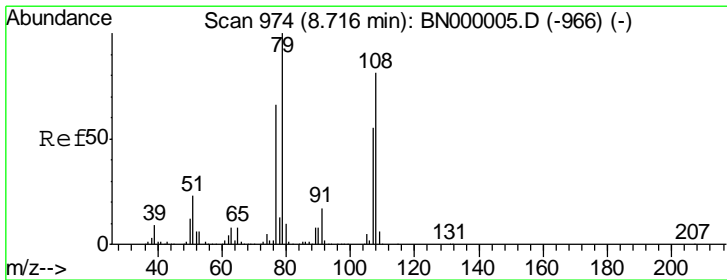
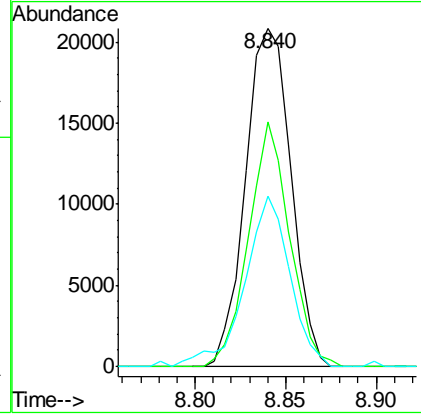
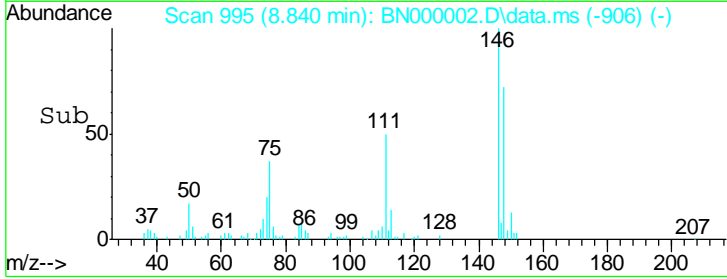
#14
 1,2-Dichlorobenzene
 Concen: 2.84 ng
 RT: 8.840 min Scan# 99
 Delta R.T. -0.006 min
 Lab File: BN000002.D
 Acq: 01 Feb 2018 15:17

Instrument :
 BNA_N
 ClientSampled :
 SSTDICC2.5

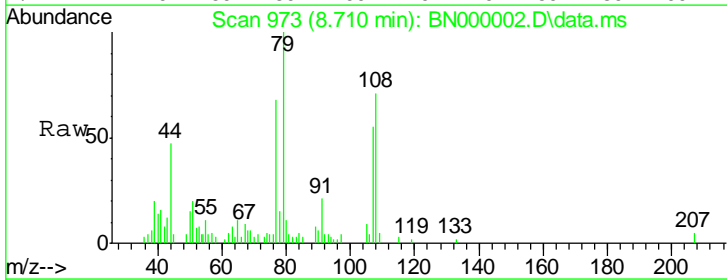


Tgt Ion	Resp	Lower	Upper
146	100		
148	72.3	49.3	73.9
111	50.3	34.3	51.5

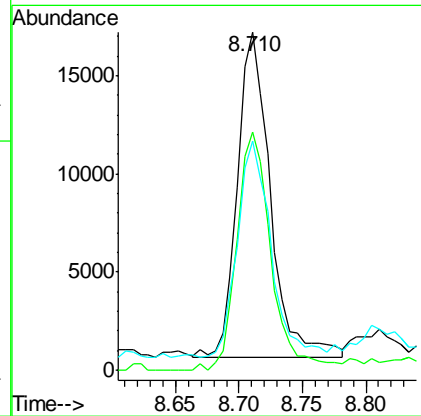
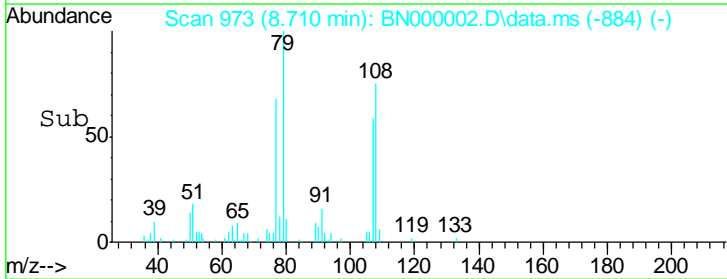
Manual Integrations
APPROVED
 Sohil
 2/6/2018 5:13:47 PM

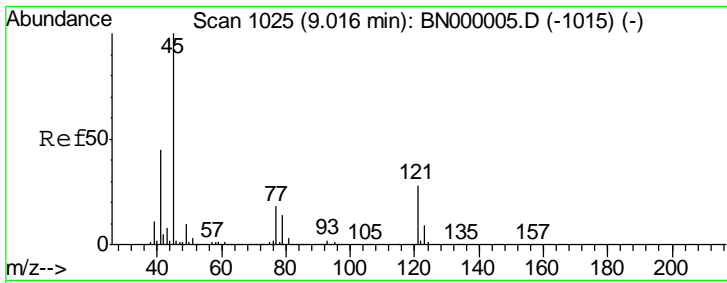


#15
 Benzyl Alcohol
 Concen: 3.33 ng
 RT: 8.710 min Scan# 973
 Delta R.T. -0.006 min
 Lab File: BN000002.D
 Acq: 01 Feb 2018 15:17



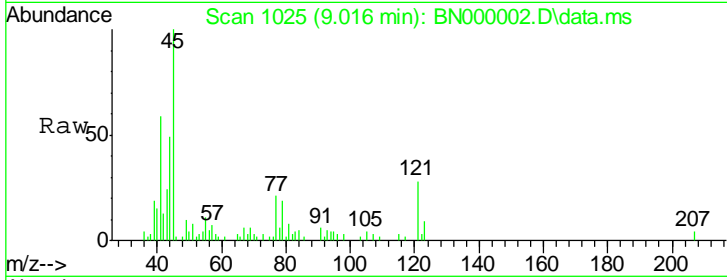
Tgt Ion	Resp	Lower	Upper
79	100		
108	70.6	57.2	85.8
77	67.9	46.1	69.1





#16
 2,2'-oxybis(1-Chloropropane)
 Concen: 5.10 ng
 RT: 9.016 min Scan# 10
 Delta R.T. 0.006 min
 Lab File: BN000002.D
 Acq: 01 Feb 2018 15:17

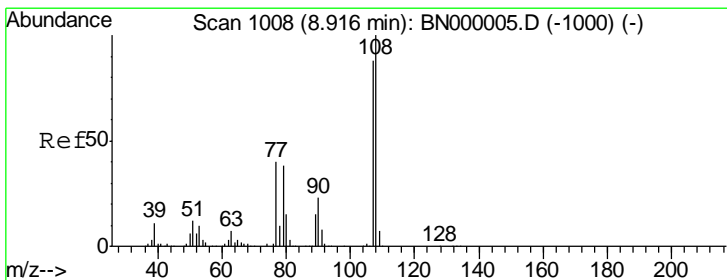
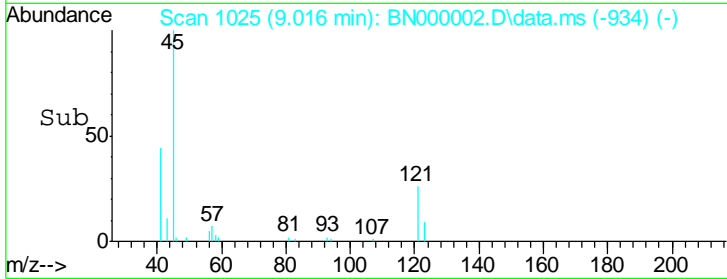
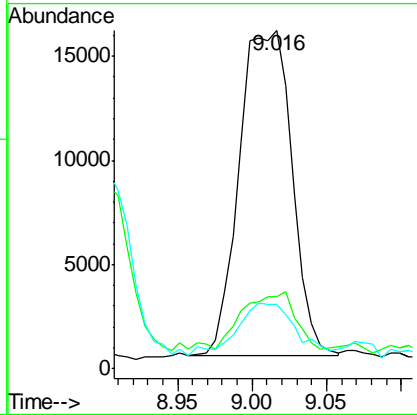
Instrument :
 BNA_N
 ClientSampled :
 SSTDICC2.5



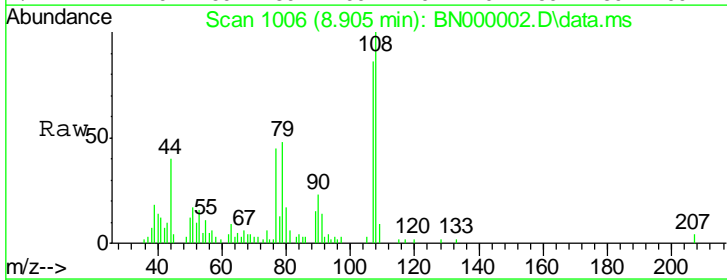
Tgt Ion	Ratio	Lower	Upper
45	100		
77	21.1	0.0	30.2
79	19.0	0.0	27.9

Manual Integrations
 APPROVED

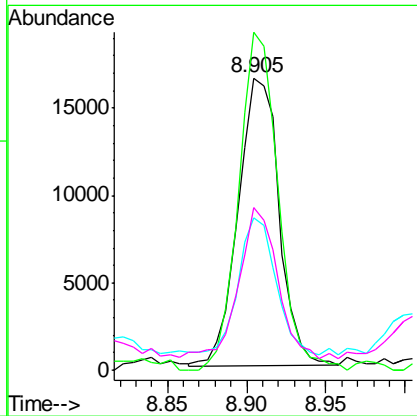
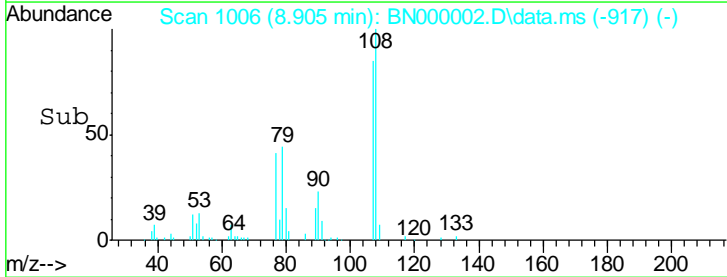
Sohil
 2/6/2018 5:13:47 PM

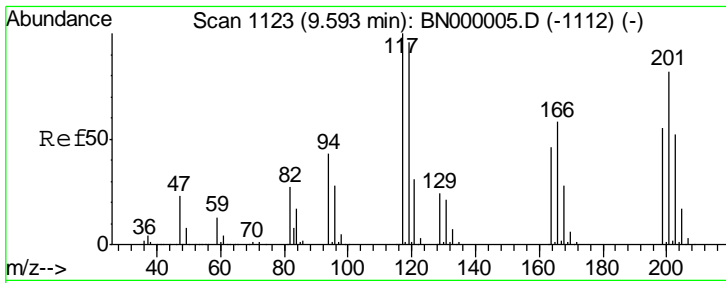


#17
 2-Methylphenol
 Concen: 3.51 ng
 RT: 8.905 min Scan# 1006
 Delta R.T. -0.006 min
 Lab File: BN000002.D
 Acq: 01 Feb 2018 15:17



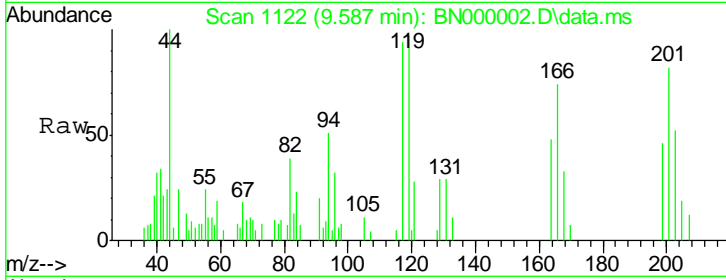
Tgt Ion	Ratio	Lower	Upper
107	100		
108	115.8	83.9	125.9
77	52.4	37.2	55.8
79	55.7	36.2	54.2#





#18
 Hexachloroethane
 Concen: 2.82 ng
 RT: 9.587 min Scan# 111
 Delta R.T. -0.006 min
 Lab File: BN000002.D
 Acq: 01 Feb 2018 15:17

Instrument :
 BNA_N
 ClientSampled :
 SSTDICC2.5

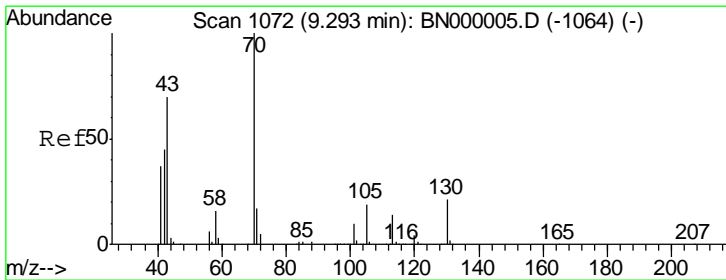
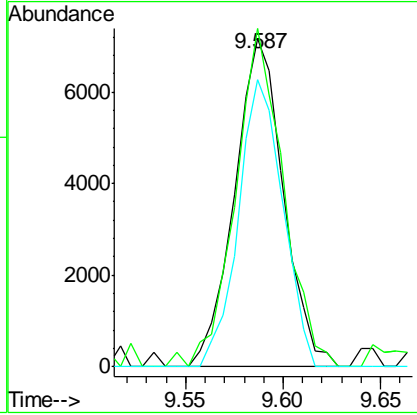
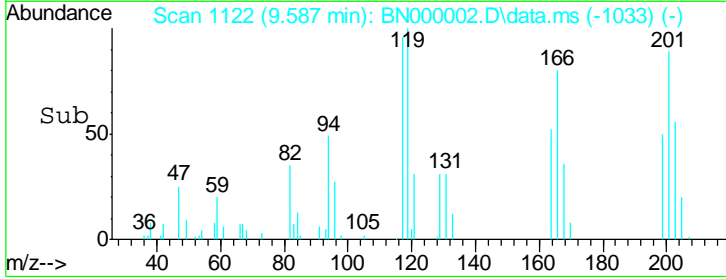


Tgt Ion: 117 Resp: 12414

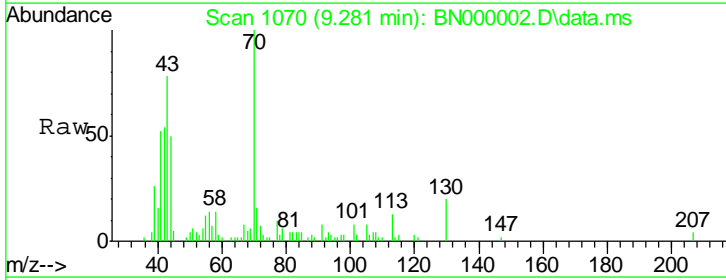
Ion	Ratio	Lower	Upper
117	100		
119	103.1	76.7	115.1
201	87.3	95.7	143.5#

Manual Integrations
 APPROVED

Sohil
 2/6/2018 5:13:47 PM

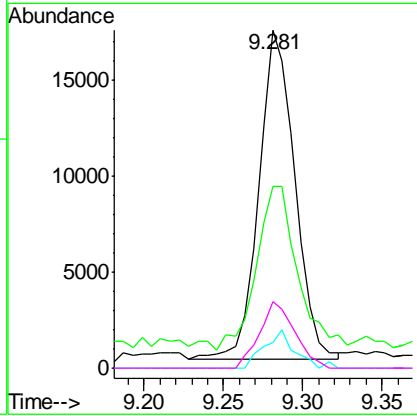
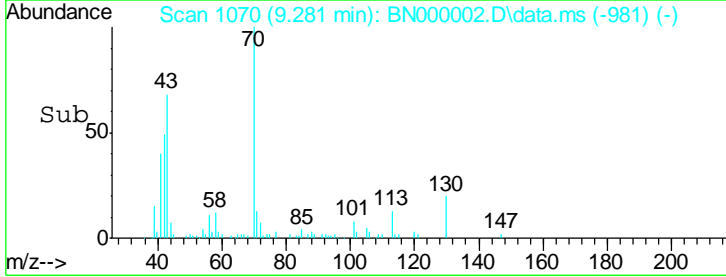


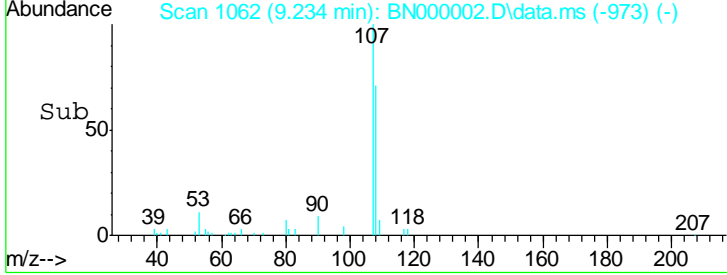
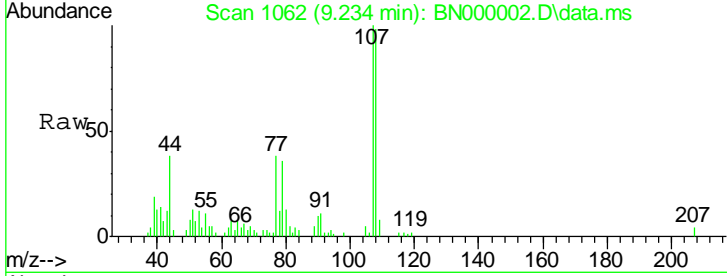
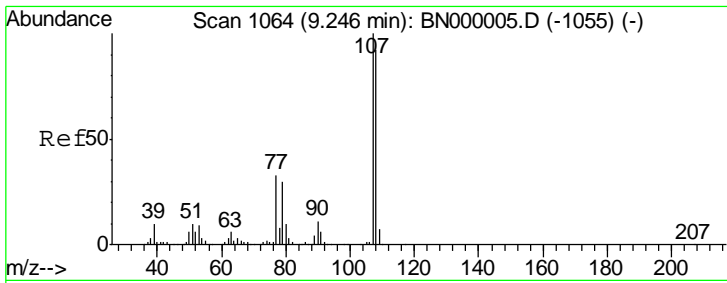
#19
 n-Nitroso-di-n-propylamine
 Concen: 3.76 ng
 RT: 9.281 min Scan# 1070
 Delta R.T. -0.006 min
 Lab File: BN000002.D
 Acq: 01 Feb 2018 15:17



Tgt Ion: 70 Resp: 27229

Ion	Ratio	Lower	Upper
70	100		
42	53.9	49.1	73.7
101	7.8	8.5	12.7#
130	19.7	13.4	20.0



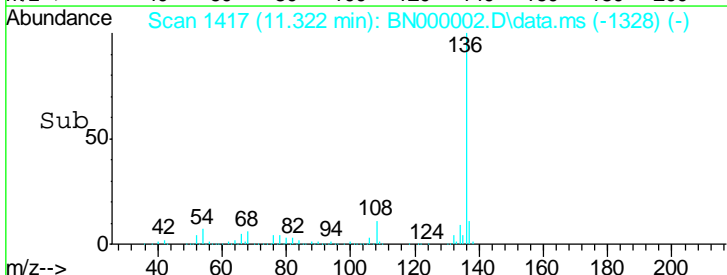
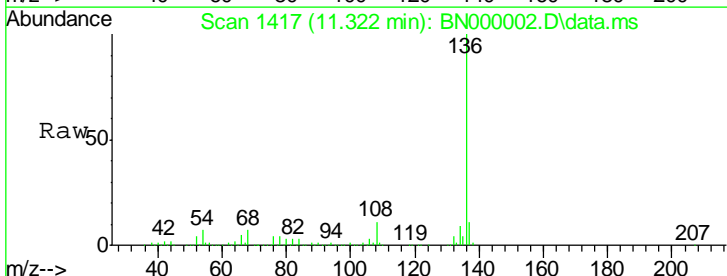
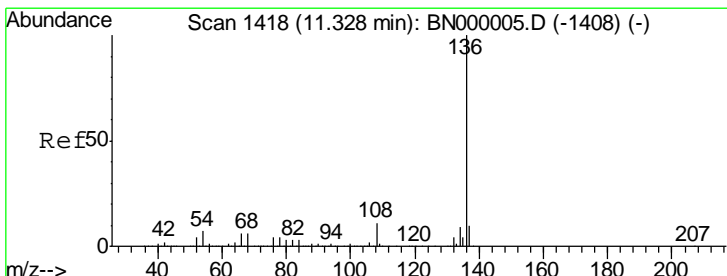
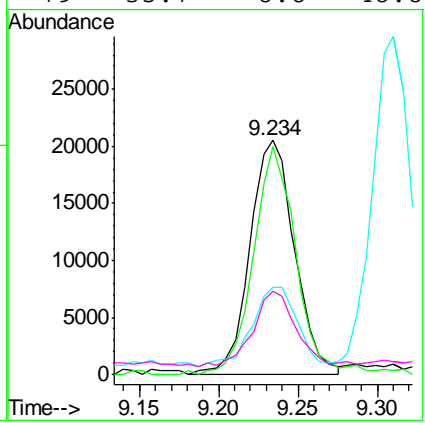


#20
 3+4-Methylphenols
 Concen: 3.41 ng
 RT: 9.234 min Scan# 10
 Delta R.T. -0.006 min
 Lab File: BN000002.D
 Acq: 01 Feb 2018 15:17

Tgt Ion	Resp	Lower	Upper
107	40254		
108	97.5	61.6	101.6
77	37.5	13.9	53.9
79	35.7	8.8	48.8

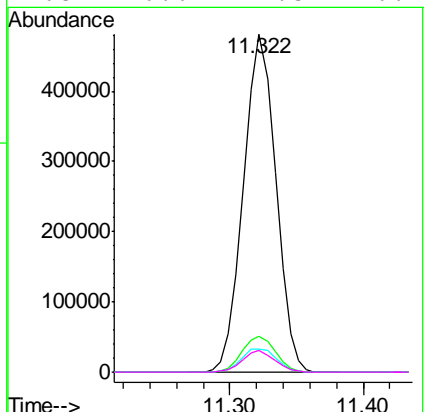
Instrument :
 BNA_N
 ClientSampled :
 SSTDICC2.5

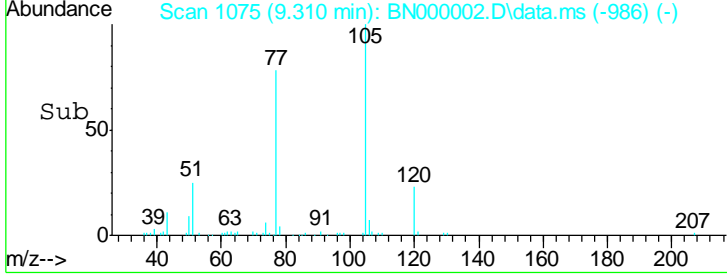
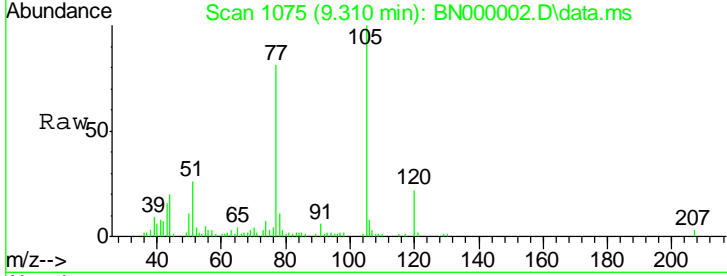
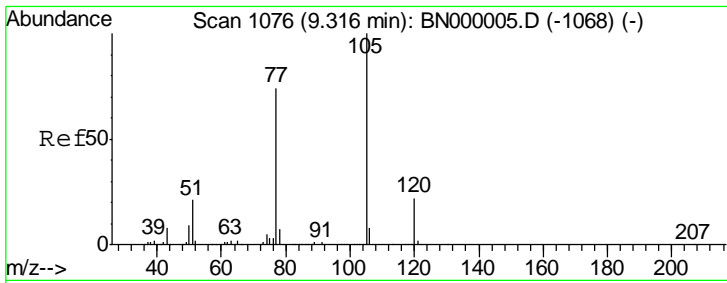
Manual Integrations
APPROVED
 Sohil
 2/6/2018 5:13:47 PM



#21
 Naphthalene-d8
 Concen: 20.00 ng
 RT: 11.322 min Scan# 1417
 Delta R.T. -0.006 min
 Lab File: BN000002.D
 Acq: 01 Feb 2018 15:17

Tgt Ion	Resp	Lower	Upper
136	808473		
137	10.8	9.2	13.8
54	6.8	10.3	15.5#
68	6.6	4.5	6.7



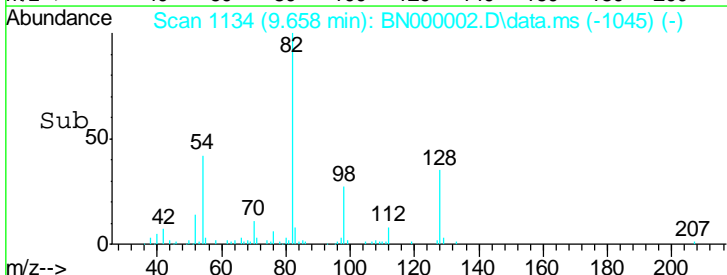
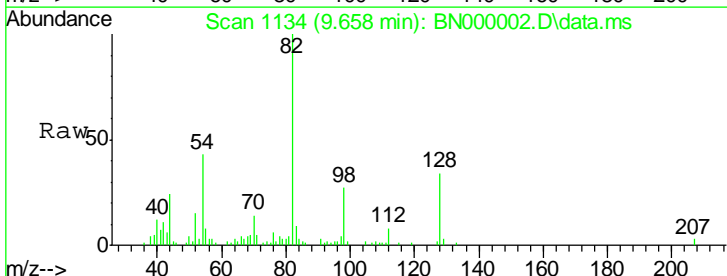
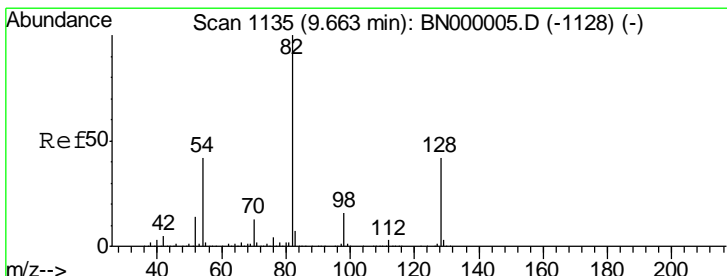
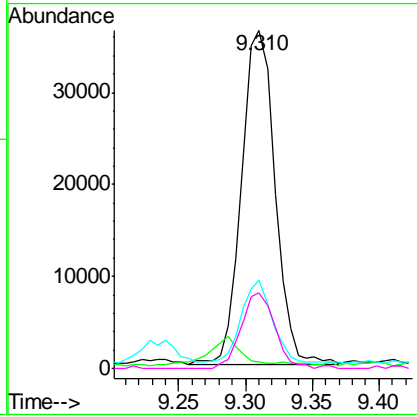


#22
 Acetophenone
 Concen: 3.32 ng
 RT: 9.310 min Scan# 10
 Delta R.T. -0.006 min
 Lab File: BN000002.D
 Acq: 01 Feb 2018 15:17

Tgt Ion	Ratio	Lower	Upper
105	100		
71	1.9	3.0	4.4#
51	26.3	26.1	39.1
120	22.4	17.4	26.2

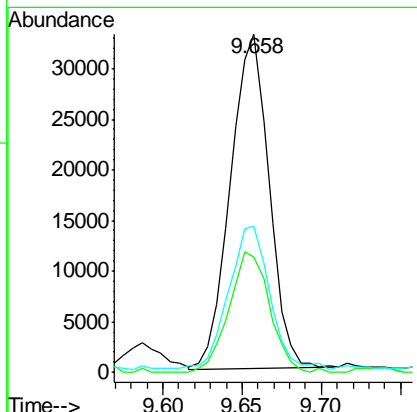
Instrument :
 BNA_N
 ClientSampled :
 SSTDICC2.5

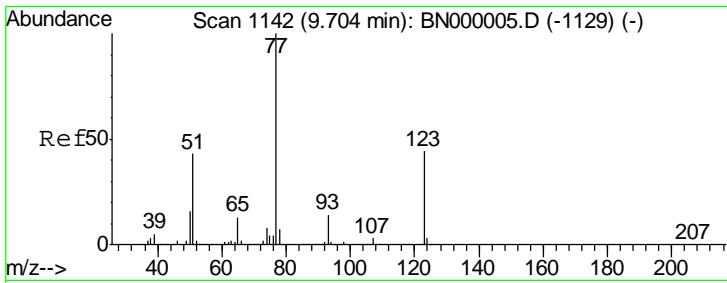
Manual Integrations
APPROVED
 Sohil
 2/6/2018 5:13:47 PM



#23
 Nitrobenzene-d5
 Concen: 4.33 ng
 RT: 9.658 min Scan# 1134
 Delta R.T. -0.006 min
 Lab File: BN000002.D
 Acq: 01 Feb 2018 15:17

Tgt Ion	Ratio	Lower	Upper
82	100		
128	34.1	29.7	44.5
54	43.1	43.1	64.7





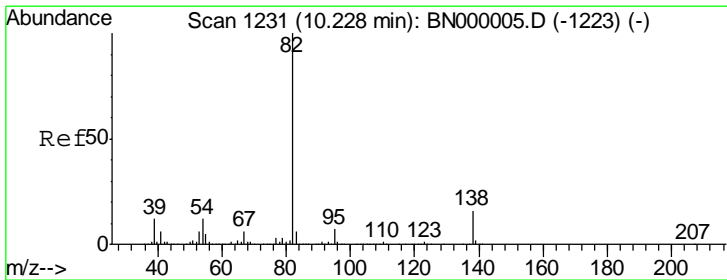
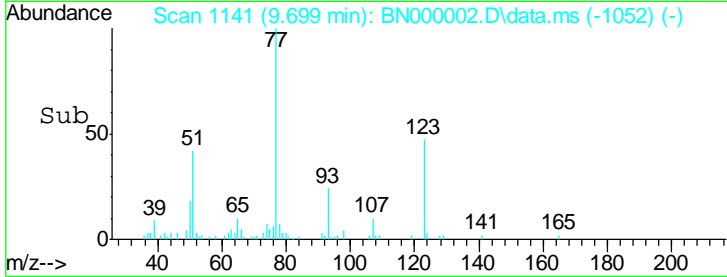
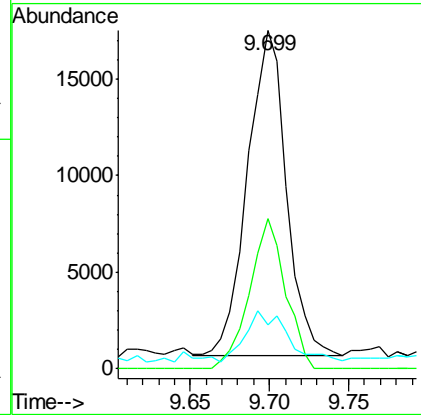
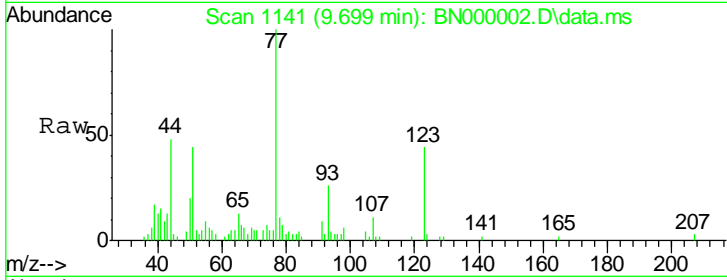
#24
 Nitrobenzene
 Concen: 2.29 ng
 RT: 9.699 min Scan# 11
 Delta R.T. -0.006 min
 Lab File: BN000002.D
 Acq: 01 Feb 2018 15:17

Instrument :
 BNA_N
 ClientSampled :
 SSTDICC2.5

Tgt Ion	Resp	Lower	Upper
77	100		
123	44.4	33.0	49.6
65	13.1	13.0	19.6

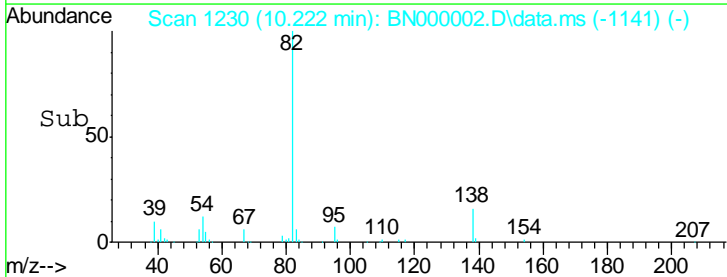
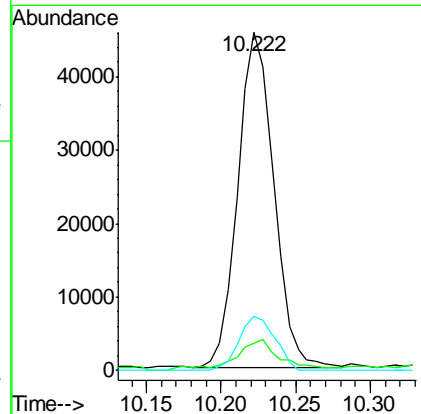
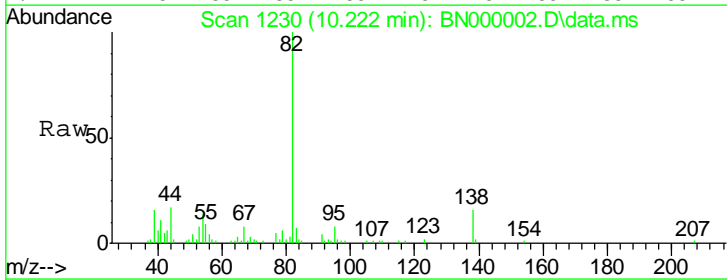
Manual Integrations
 APPROVED

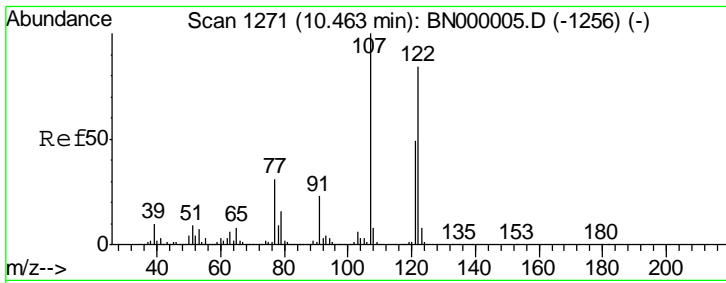
Sohil
 2/6/2018 5:13:47 PM



#25
 Isophorone
 Concen: 3.47 ng
 RT: 10.222 min Scan# 1230
 Delta R.T. -0.006 min
 Lab File: BN000002.D
 Acq: 01 Feb 2018 15:17

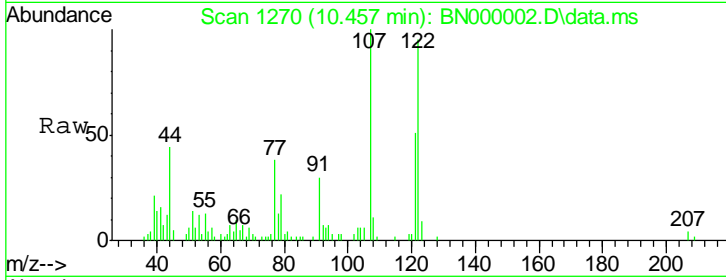
Tgt Ion	Resp	Lower	Upper
82	100		
95	8.2	6.2	9.2
138	15.9	12.1	18.1





#27
 2,4-Dimethylphenol
 Concen: 3.27 ng
 RT: 10.457 min Scan# 12
 Delta R.T. -0.006 min
 Lab File: BN000002.D
 Acq: 01 Feb 2018 15:17

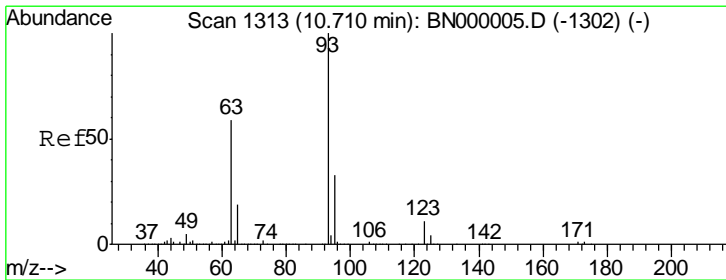
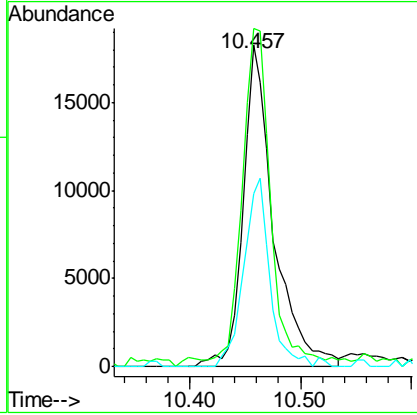
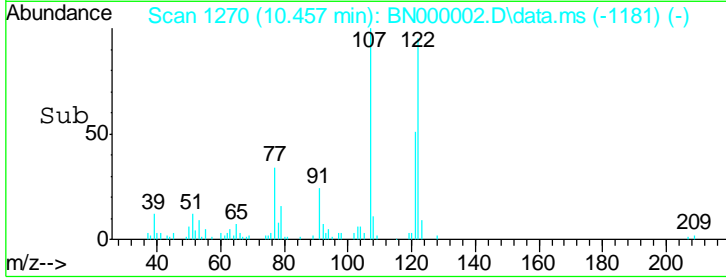
Instrument :
 BNA_N
 ClientSampled :
 SSTDICC2.5



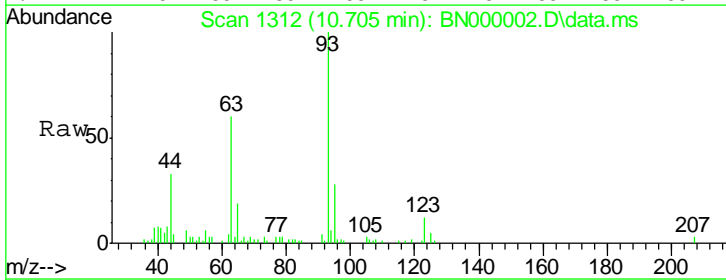
Tgt Ion: 122 Resp: 35460

Ion	Ratio	Lower	Upper
122	100		
107	105.1	100.2	150.2
121	53.8	44.4	66.6

Manual Integrations
APPROVED
 Sohil
 2/6/2018 5:13:47 PM

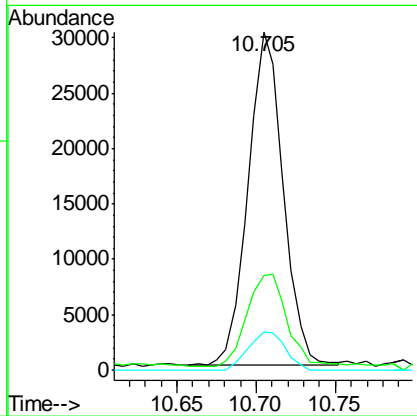
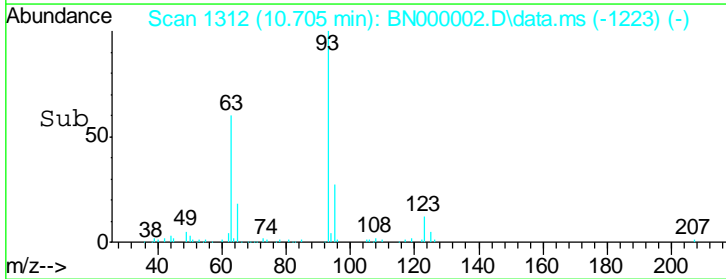


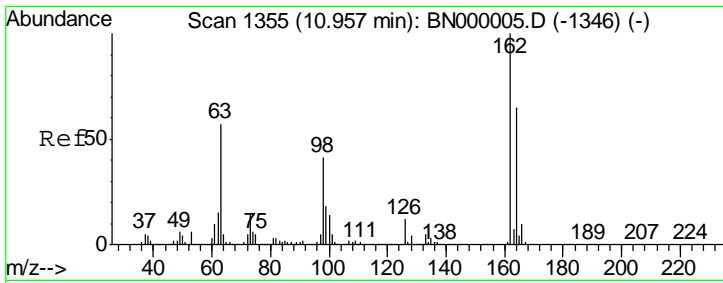
#28
 bis(2-Chloroethoxy)methane
 Concen: 3.79 ng
 RT: 10.705 min Scan# 1312
 Delta R.T. -0.006 min
 Lab File: BN000002.D
 Acq: 01 Feb 2018 15:17



Tgt Ion: 93 Resp: 45791

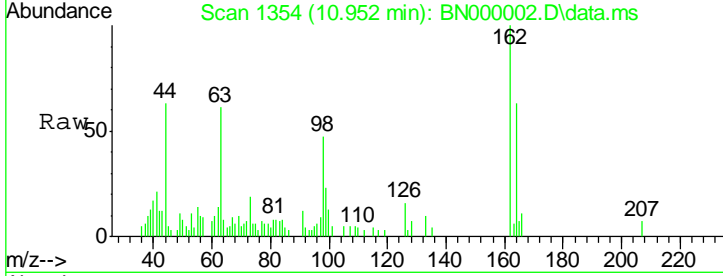
Ion	Ratio	Lower	Upper
93	100		
95	27.9	24.3	36.5
123	11.5	8.4	12.6





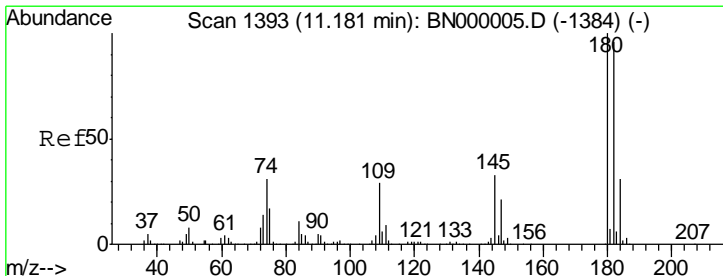
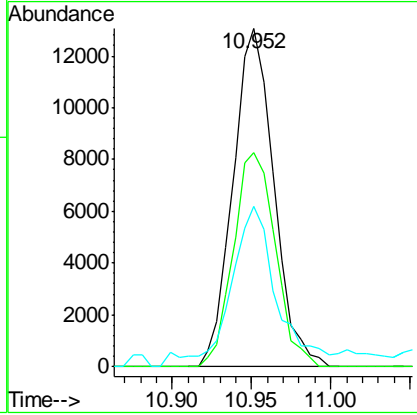
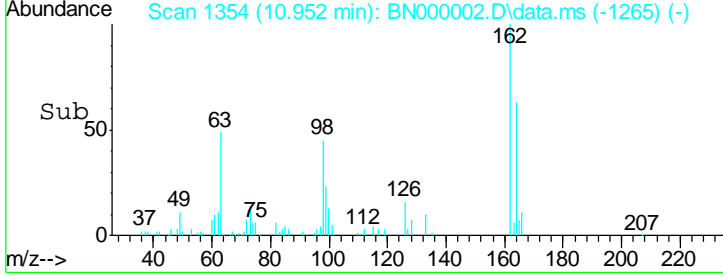
#29
 2,4-Dichlorophenol
 Concen: 1.62 ng
 RT: 10.952 min Scan# 1354
 Delta R.T. -0.006 min
 Lab File: BN000002.D
 Acq: 01 Feb 2018 15:17

Instrument :
 BNA_N
 ClientSampled :
 SSTDICC2.5

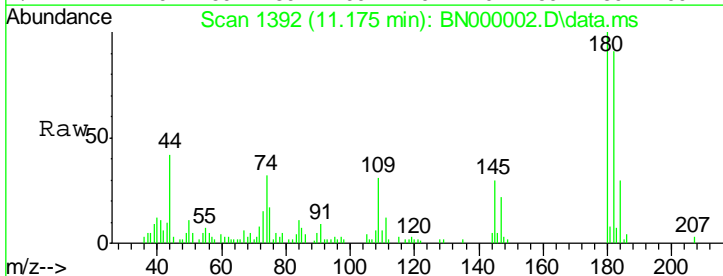


Tgt Ion	Ratio	Lower	Upper
162	100		
164	63.2	48.0	88.0
98	47.4	21.1	61.1

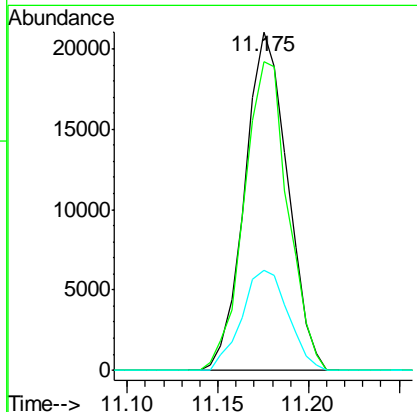
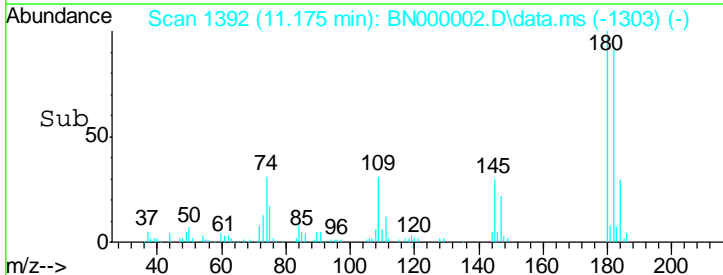
Manual Integrations
APPROVED
 Sohil
 2/6/2018 5:13:47 PM

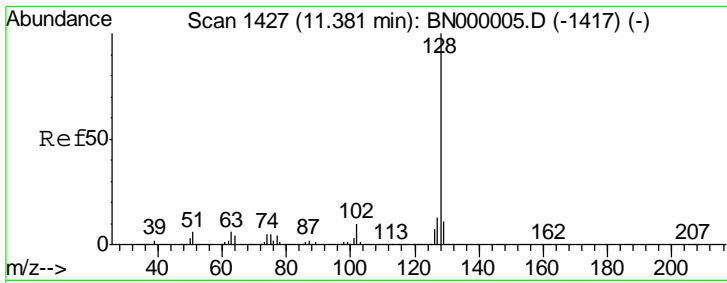


#30
 1,2,4-Trichlorobenzene
 Concen: 1.80 ng
 RT: 11.175 min Scan# 1392
 Delta R.T. -0.006 min
 Lab File: BN000002.D
 Acq: 01 Feb 2018 15:17



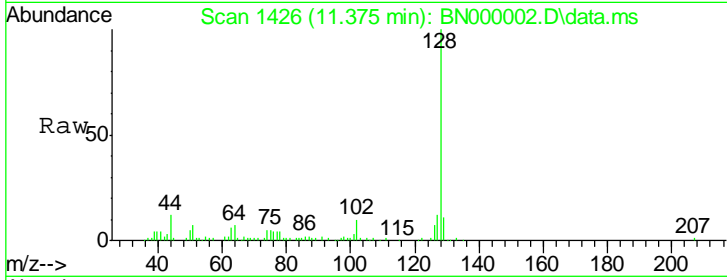
Tgt Ion	Ratio	Lower	Upper
180	100		
182	91.4	77.5	116.3
145	29.7	23.4	35.2





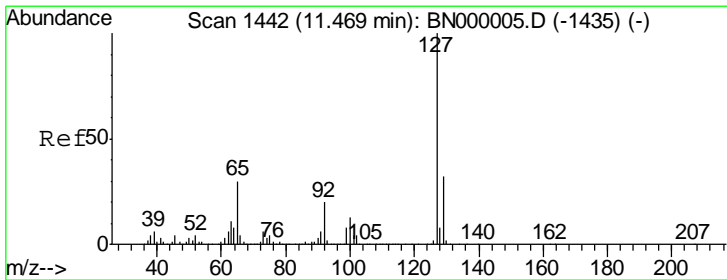
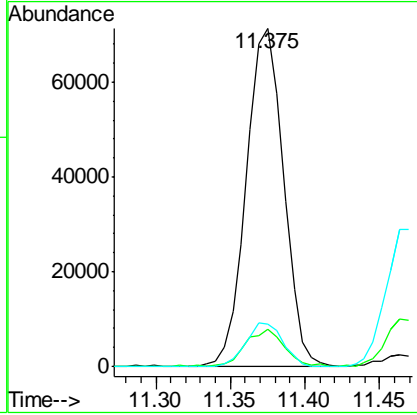
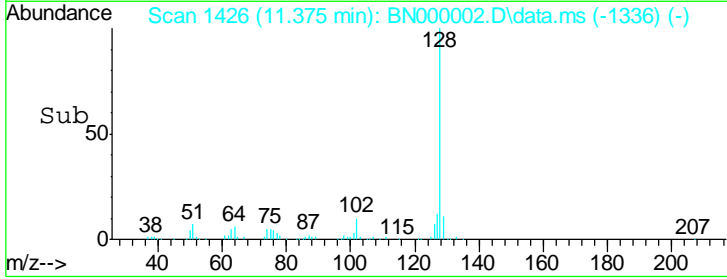
#31
 Naphthalene
 Concen: 3.13 ng
 RT: 11.375 min Scan# 1426
 Delta R.T. -0.000 min
 Lab File: BN000002.D
 Acq: 01 Feb 2018 15:17

Instrument :
 BNA_N
ClientSampled :
 SSTDICC2.5

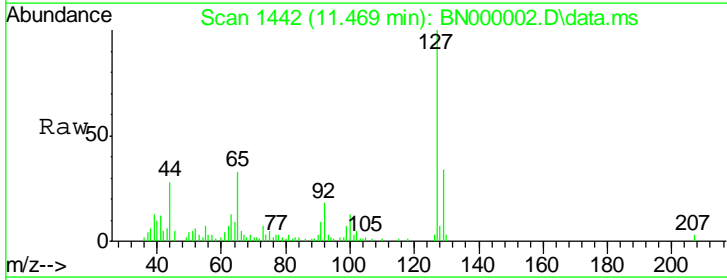


Tgt Ion	Resp	Lower	Upper
128	123402		
129	11.2	8.6	12.8
127	12.4	11.6	17.4

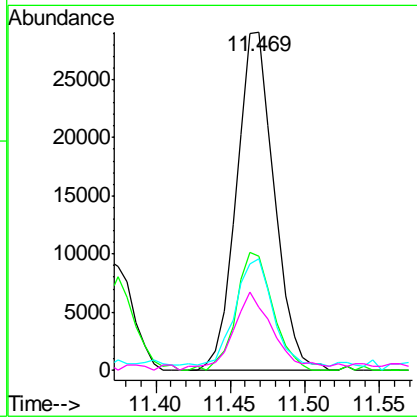
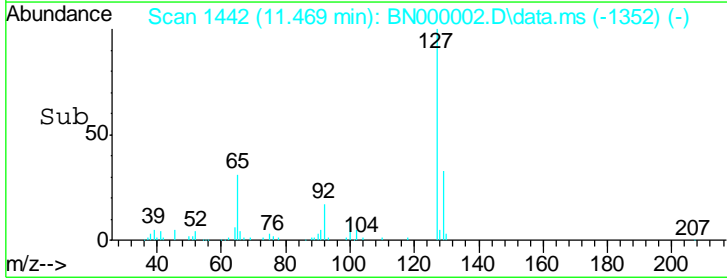
Manual Integrations
APPROVED
 Sohil
 2/6/2018 5:13:47 PM

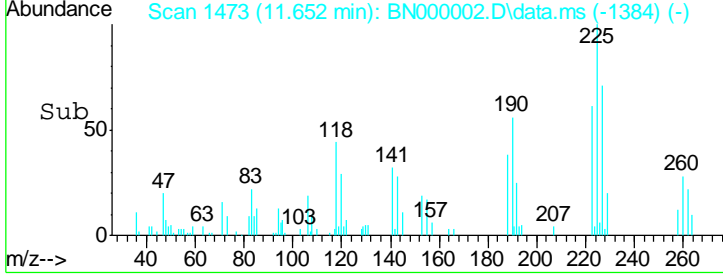
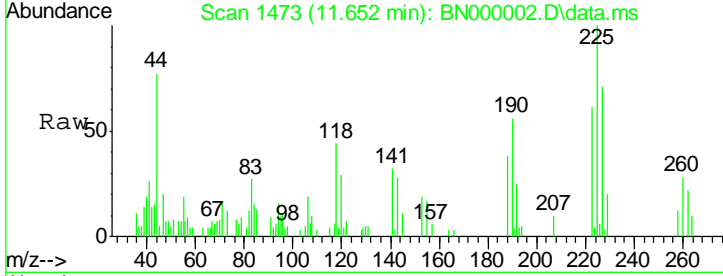
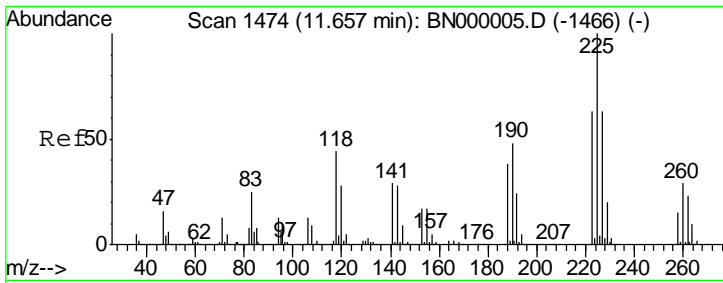


#33
 4-Chloroaniline
 Concen: 2.89 ng
 RT: 11.469 min Scan# 1442
 Delta R.T. -0.000 min
 Lab File: BN000002.D
 Acq: 01 Feb 2018 15:17



Tgt Ion	Resp	Lower	Upper
127	50847		
129	33.8	24.0	36.0
65	33.0	27.0	40.4
92	18.5	16.6	25.0



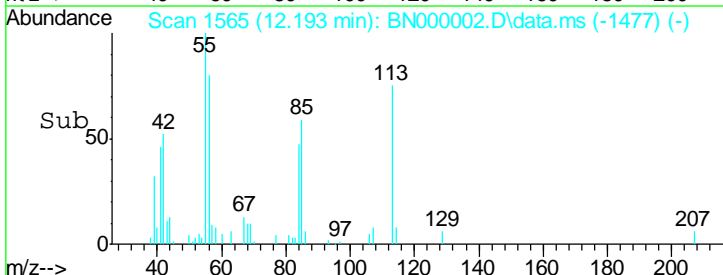
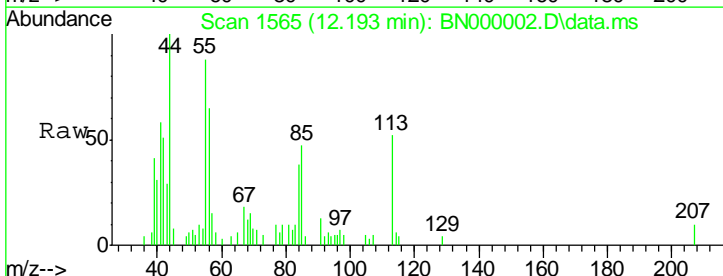
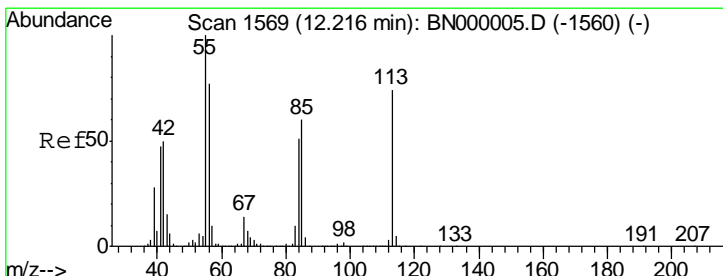
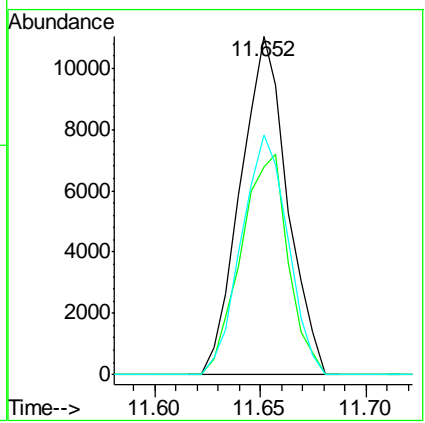


#34
Hexachlorobutadiene
Concen: 1.14 ng
RT: 11.652 min Scan# 14
Delta R.T. -0.006 min
Lab File: BN000002.D
Acq: 01 Feb 2018 15:17

Tgt Ion	Resp	Lower	Upper
225	17019		
223	61.3	49.7	74.5
227	70.8	48.1	72.1

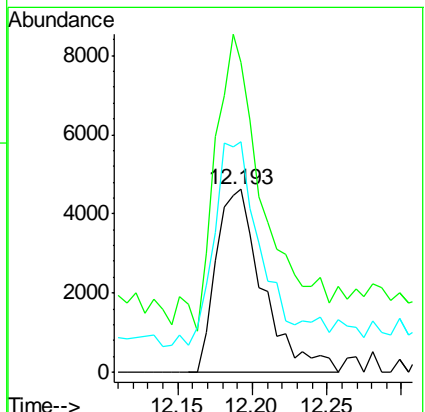
Instrument : BNA_N
Client Sampled : SSTDICC2.5

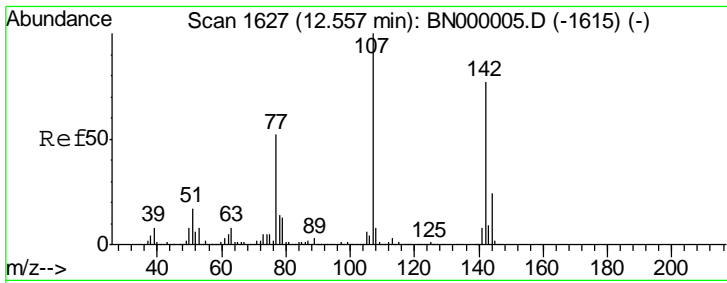
Manual Integrations APPROVED
Sohil
2/6/2018 5:13:47 PM



#35
Caprolactam
Concen: 2.45 ng
RT: 12.193 min Scan# 1565
Delta R.T. -0.012 min
Lab File: BN000002.D
Acq: 01 Feb 2018 15:17

Tgt Ion	Resp	Lower	Upper
113	10117		
55	169.3	120.0	160.0#
56	125.8	90.0	130.0



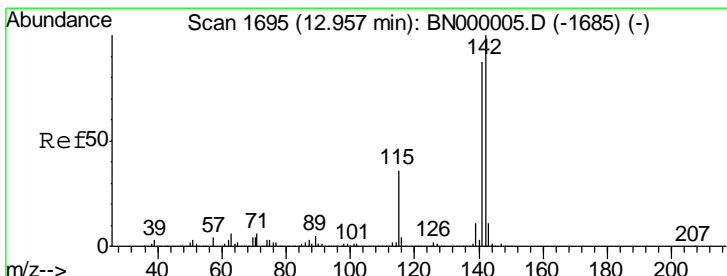
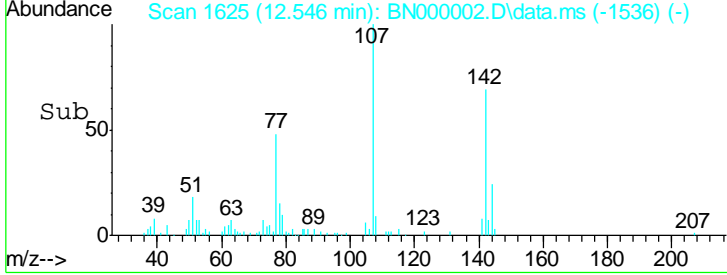
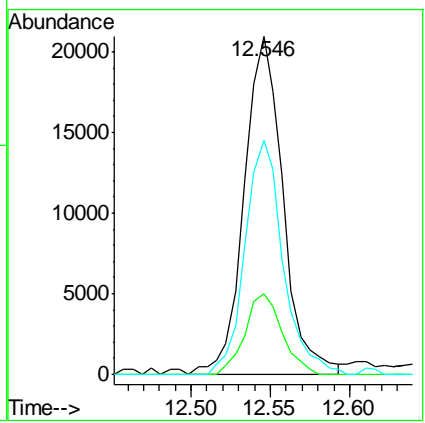
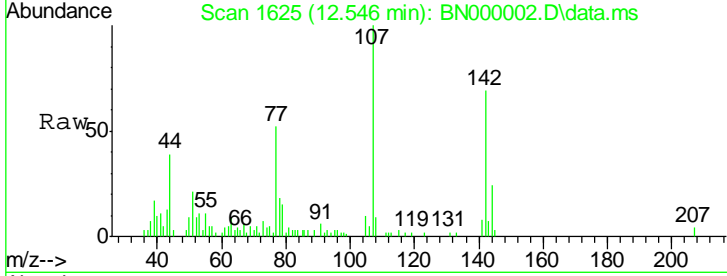


#36
 4-Chloro-3-methylphenol
 Concen: 2.62 ng
 RT: 12.546 min Scan# 16
 Delta R.T. -0.006 min
 Lab File: BN000002.D
 Acq: 01 Feb 2018 15:17

Instrument :
 BNA_N
 ClientSampled :
 SSTDICC2.5

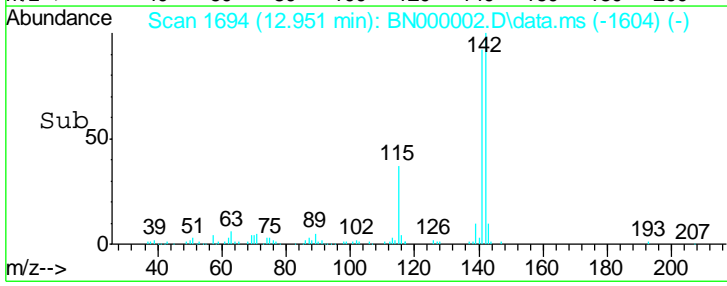
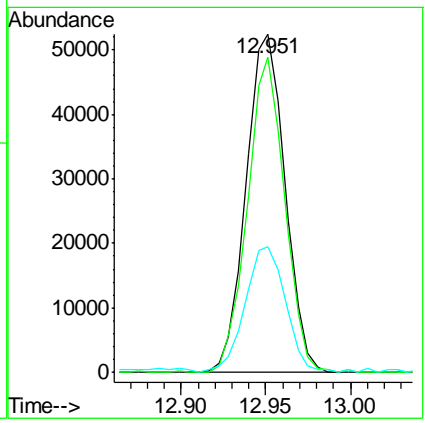
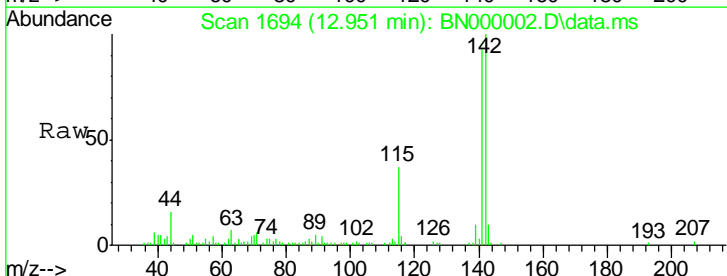
Tgt Ion	Resp	Lower	Upper
107	35781		
144	24.0	18.2	27.4
142	69.2	59.0	88.4

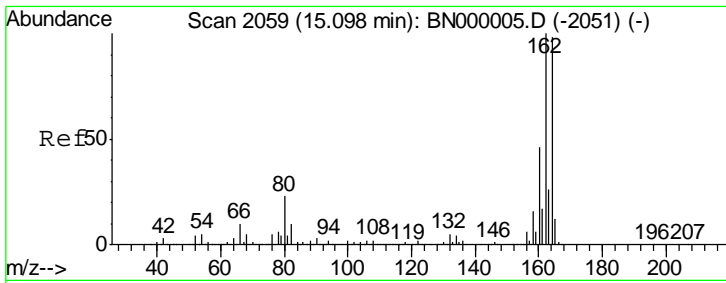
Manual Integrations
APPROVED
 Sohil
 2/6/2018 5:13:47 PM



#37
 2-Methylnaphthalene
 Concen: 2.54 ng
 RT: 12.951 min Scan# 1694
 Delta R.T. -0.000 min
 Lab File: BN000002.D
 Acq: 01 Feb 2018 15:17

Tgt Ion	Resp	Lower	Upper
142	84308		
141	93.1	67.1	100.7
115	37.2	30.7	46.1





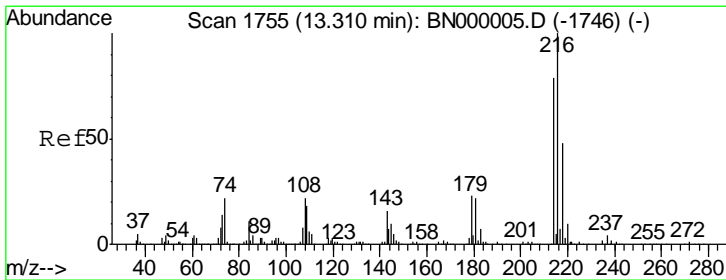
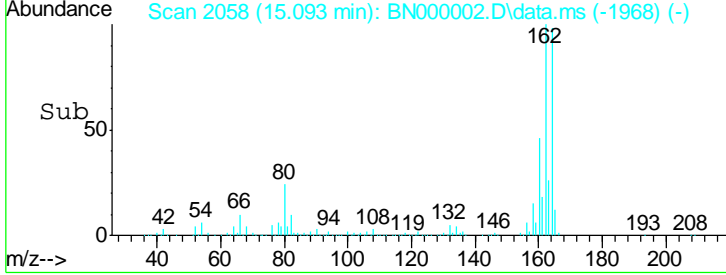
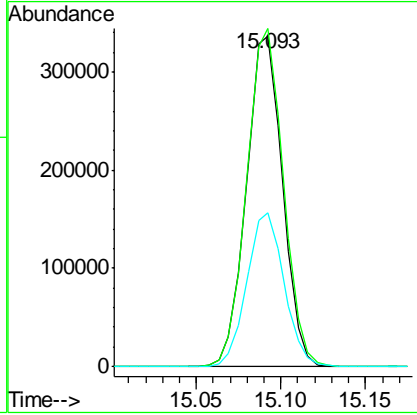
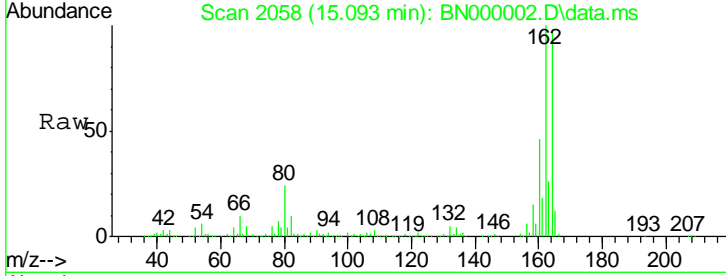
#38
 Acenaphthene-d10
 Concen: 20.00 ng
 RT: 15.093 min Scan# 20
 Delta R.T. -0.000 min
 Lab File: BN000002.D
 Acq: 01 Feb 2018 15:17

Instrument :
 BNA_N
 ClientSampled :
 SSTDICC2.5

Tgt Ion	Ratio	Lower	Upper
164	100		
162	102.2	78.8	118.2
160	46.6	35.4	53.0

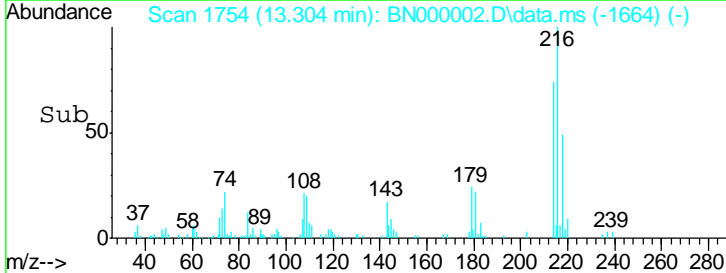
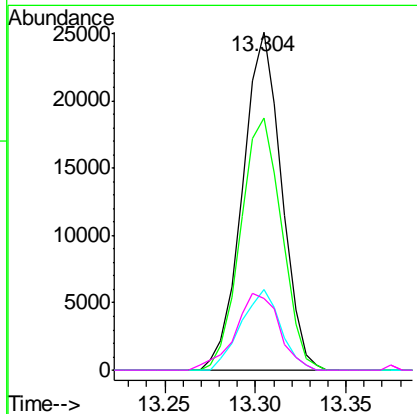
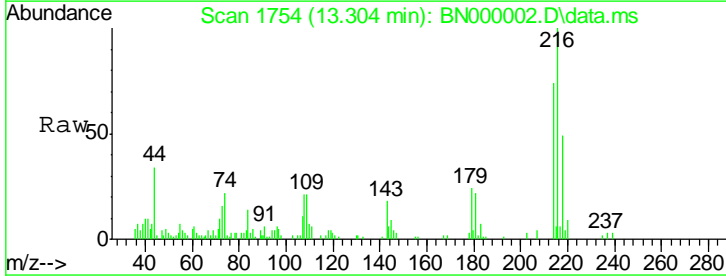
Manual Integrations
 APPROVED

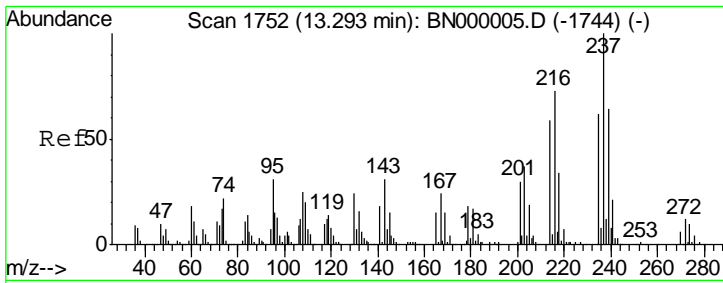
Sohil
 2/6/2018 5:13:47 PM



#39
 1,2,4,5-Tetrachlorobenzene
 Concen: 1.60 ng
 RT: 13.304 min Scan# 1754
 Delta R.T. -0.000 min
 Lab File: BN000002.D
 Acq: 01 Feb 2018 15:17

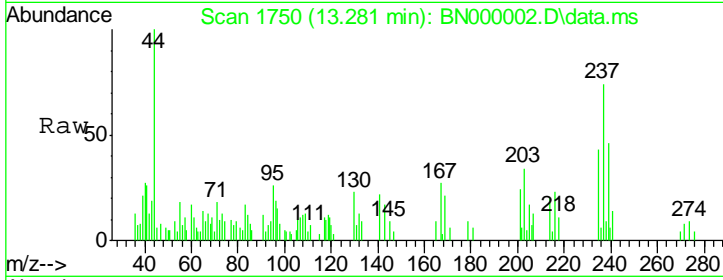
Tgt Ion	Ratio	Lower	Upper
216	100		
214	78.4	63.0	94.4
179	24.3	17.0	25.6
108	25.8	12.8	19.2#





#40
 Hexachlorocyclopentadiene
 Concen: 0.71 ng
 RT: 13.281 min Scan# 17
 Delta R.T. -0.006 min
 Lab File: BN000002.D
 Acq: 01 Feb 2018 15:17

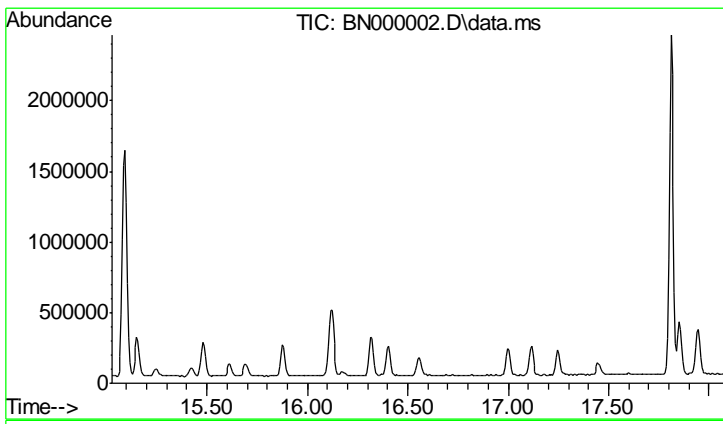
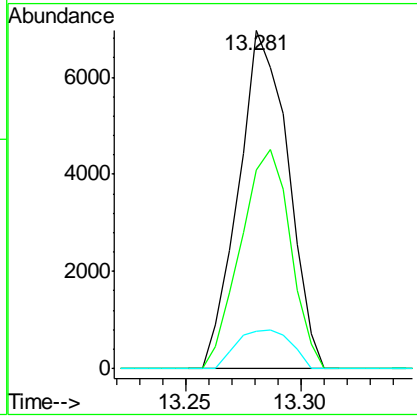
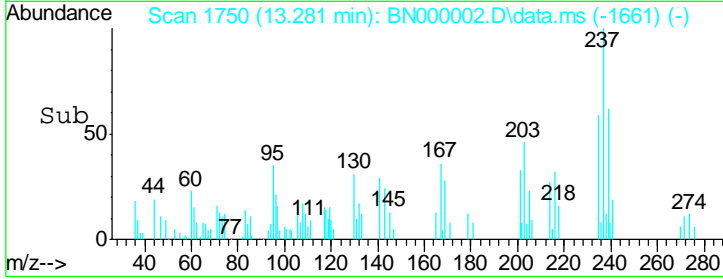
Instrument :
 BNA_N
 ClientSampled :
 SSTDICC2.5



Tot Ion: 237 Resp: 10398

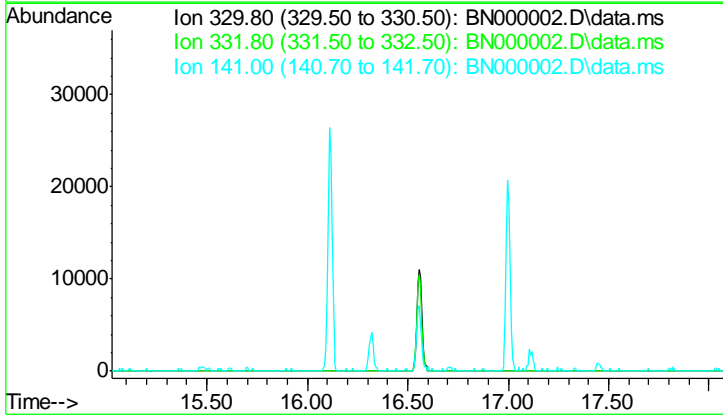
Ion	Ratio	Lower	Upper
237	100		
235	58.6	50.4	90.4
272	10.9	0.0	31.8

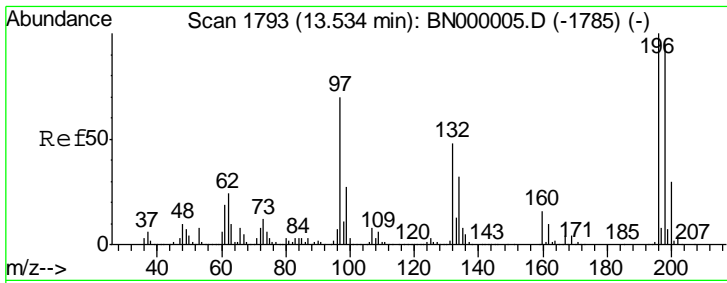
Manual Integrations
APPROVED
 Sohil
 2/6/2018 5:13:47 PM



#41
 2,4,6-Tribromophenol
 Concen: 0.00 ng
 Expected RT: 16.56 min
 Lab File: BN000002.D
 Acq: 01 Feb 2018 15:17

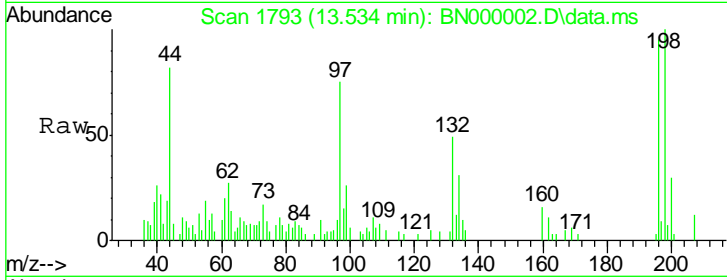
Tgt Ion	Sig	Exp Ratio
330	100	
332	96.3	
141	31.5	





#42
 2,4,6-Trichlorophenol
 Concen: 1.42 ng
 RT: 13.534 min Scan# 1793
 Delta R.T. -0.000 min
 Lab File: BN000002.D
 Acq: 01 Feb 2018 15:17

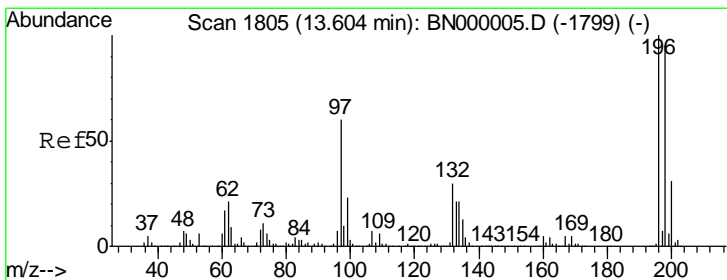
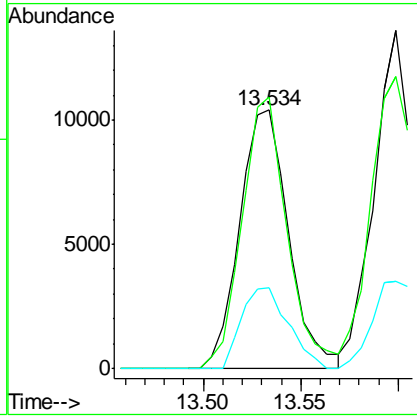
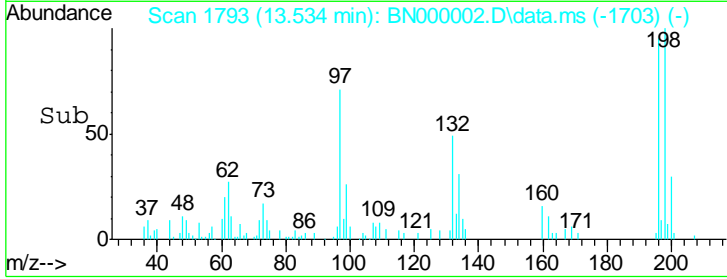
Instrument :
 BNA_N
ClientSampled :
 SSTDICC2.5



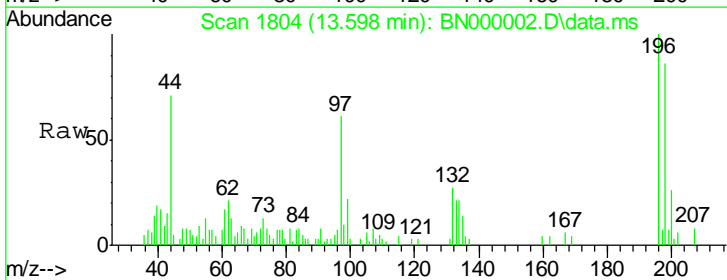
Tgt Ion: 196 Resp: 18096

Ion	Ratio	Lower	Upper
196	100		
198	104.9	78.2	117.2
200	31.2	24.6	36.8

Manual Integrations
APPROVED
 Sohil
 2/6/2018 5:13:47 PM

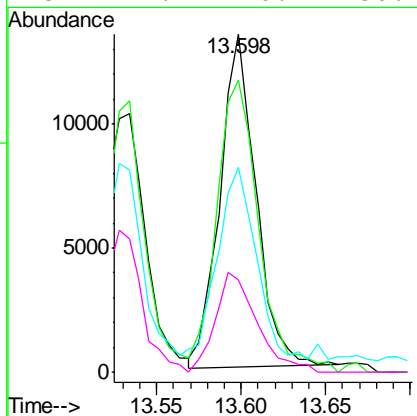
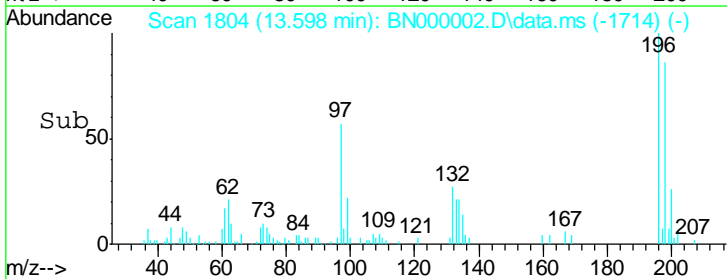


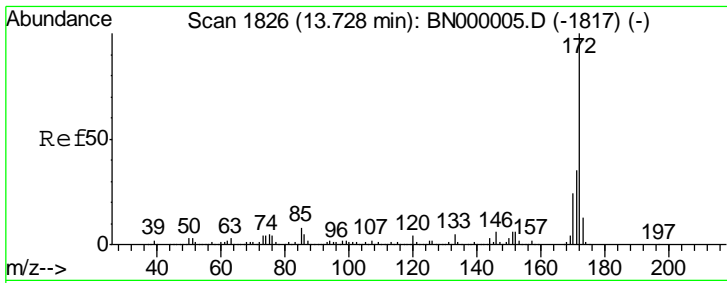
#43
 2,4,5-Trichlorophenol
 Concen: 1.34 ng
 RT: 13.598 min Scan# 1804
 Delta R.T. -0.000 min
 Lab File: BN000002.D
 Acq: 01 Feb 2018 15:17



Tgt Ion: 196 Resp: 19899

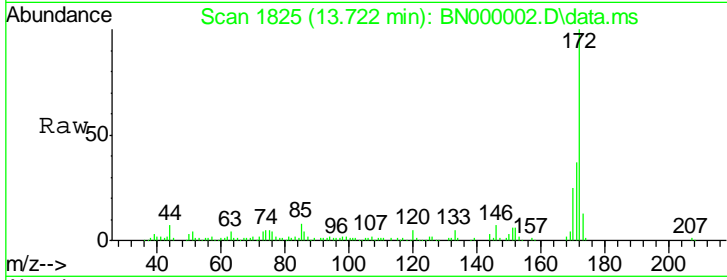
Ion	Ratio	Lower	Upper
196	100		
198	86.3	76.2	114.4
97	60.7	38.7	58.1#
132	27.4	20.2	30.2





#44
 2-Fluorobiphenyl
 Concen: 4.85 ng
 RT: 13.722 min Scan# 18
 Delta R.T. -0.006 min
 Lab File: BN000002.D
 Acq: 01 Feb 2018 15:17

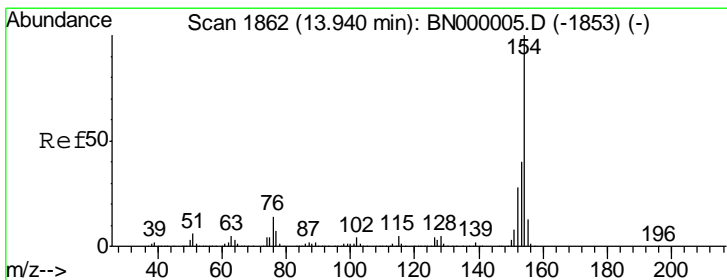
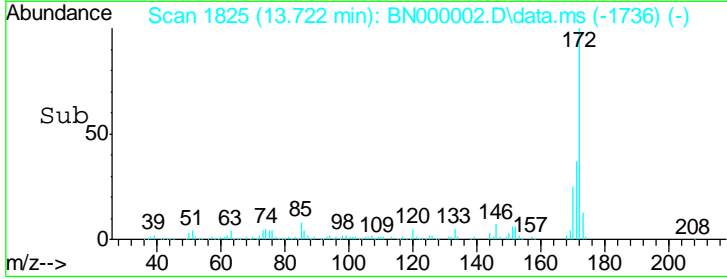
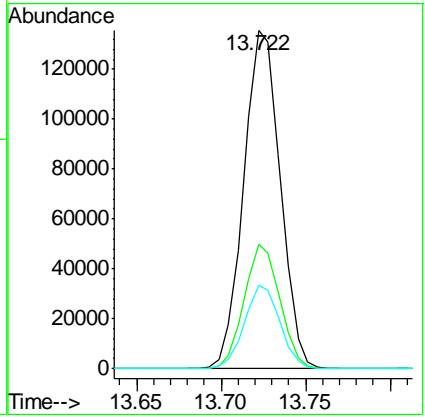
Instrument :
 BNA_N
ClientSampled :
 SSTDICC2.5



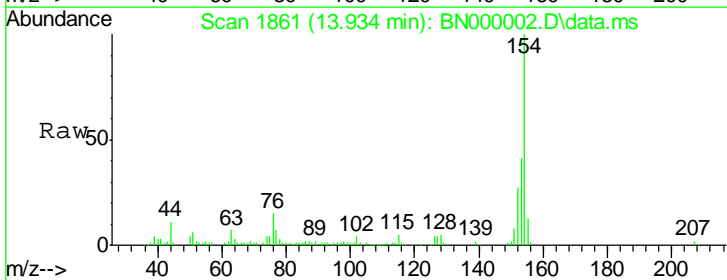
Tgt Ion: 172 Resp: 204357

Ion	Ratio	Lower	Upper
172	100		
171	36.7	30.0	45.0
170	24.8	19.5	29.3

Manual Integrations
APPROVED
 Sohil
 2/6/2018 5:13:47 PM

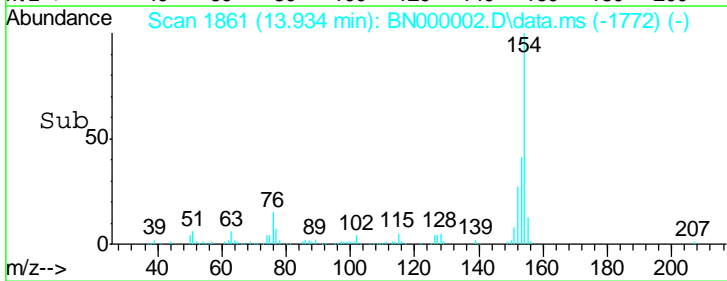
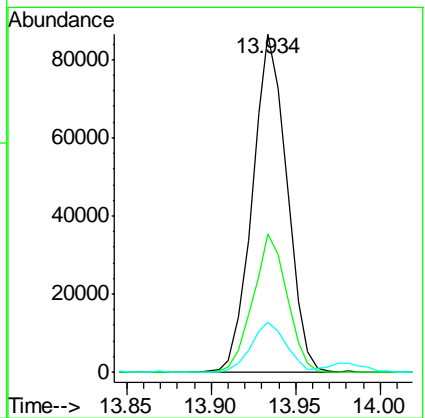


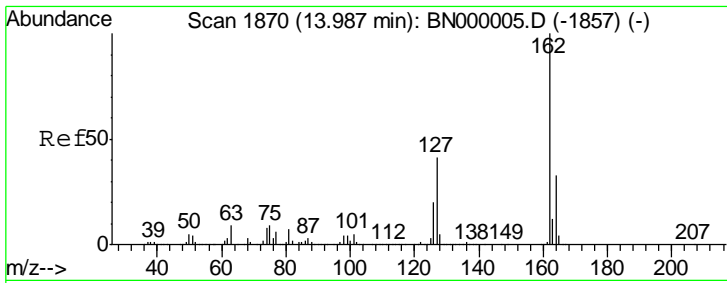
#45
 1,1'-Biphenyl
 Concen: 2.90 ng
 RT: 13.934 min Scan# 1861
 Delta R.T. -0.006 min
 Lab File: BN000002.D
 Acq: 01 Feb 2018 15:17



Tgt Ion: 154 Resp: 122677

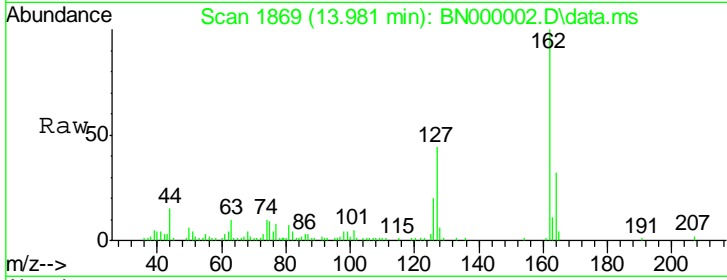
Ion	Ratio	Lower	Upper
154	100		
153	40.9	19.8	59.8
76	14.9	0.0	31.9





#46
 2-Chloronaphthalene
 Concen: 2.69 ng
 RT: 13.981 min Scan# 1870
 Delta R.T. -0.006 min
 Lab File: BN000002.D
 Acq: 01 Feb 2018 15:17

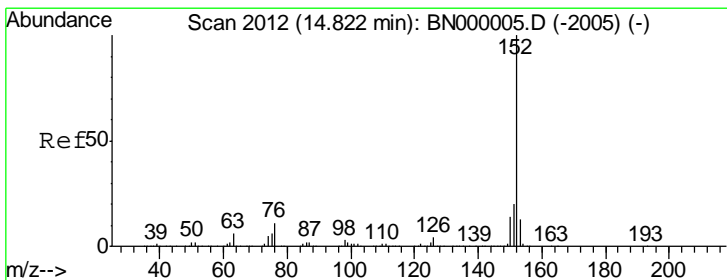
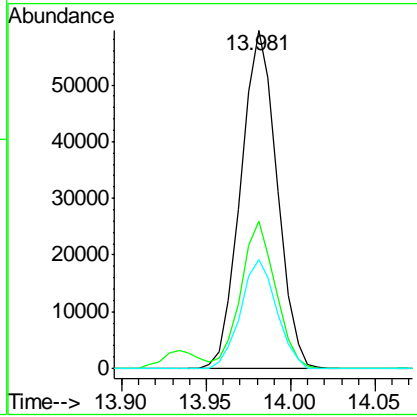
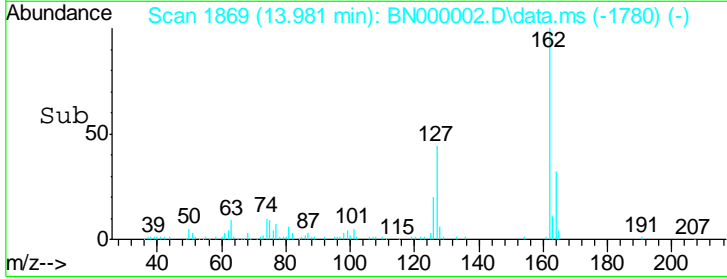
Instrument :
 BNA_N
 ClientSampled :
 SSTDICC2.5



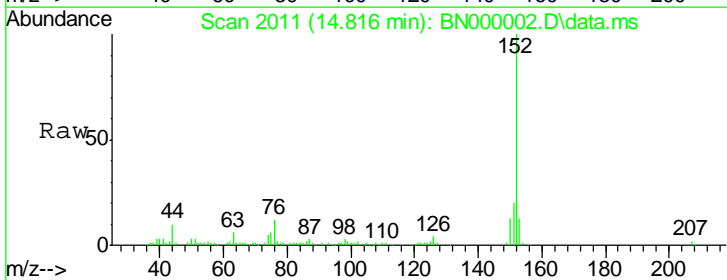
Tgt Ion: 162 Resp: 89222

Ion	Ratio	Lower	Upper
162	100		
127	43.7	30.7	46.1
164	32.1	26.0	39.0

Manual Integrations
APPROVED
 Sohil
 2/6/2018 5:13:47 PM

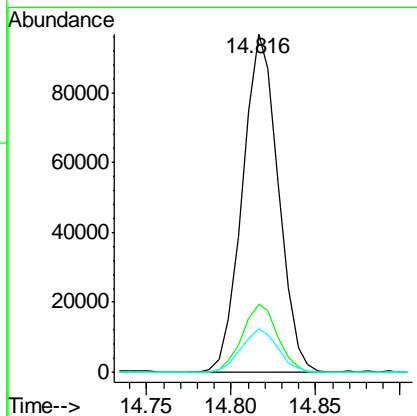
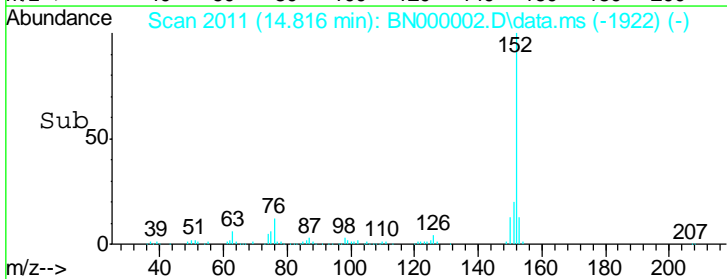


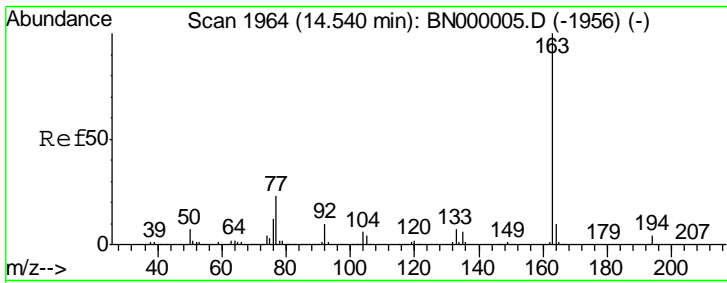
#48
 Acenaphthylene
 Concen: 2.84 ng
 RT: 14.816 min Scan# 2011
 Delta R.T. -0.006 min
 Lab File: BN000002.D
 Acq: 01 Feb 2018 15:17



Tgt Ion: 152 Resp: 142568

Ion	Ratio	Lower	Upper
152	100		
151	20.0	17.2	25.8
153	12.9	10.2	15.4



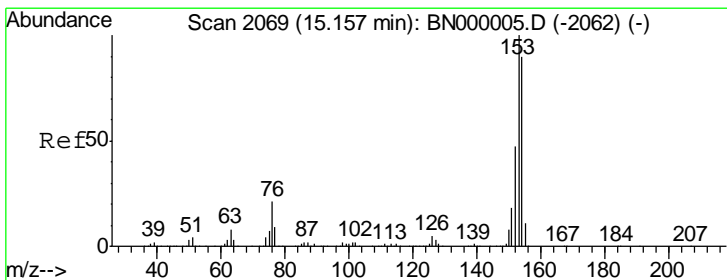
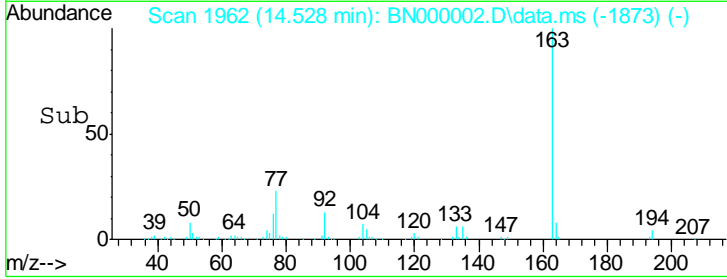
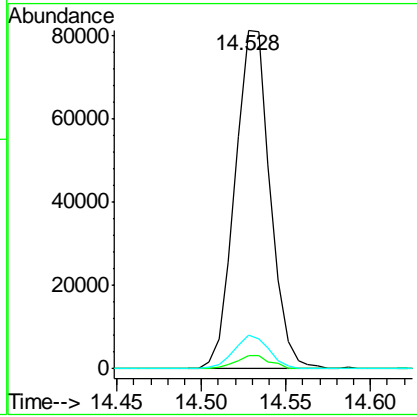
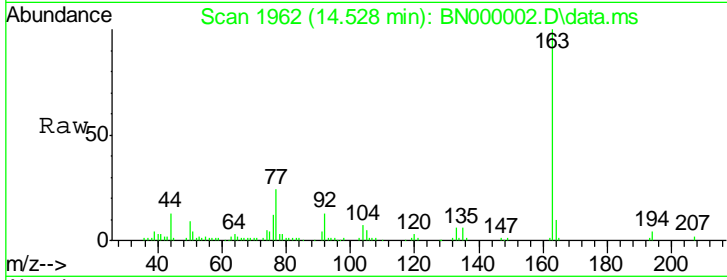


#49
 Dimethylphthalate
 Concen: 2.54 ng
 RT: 14.528 min Scan# 19
 Delta R.T. -0.006 min
 Lab File: BN000002.D
 Acq: 01 Feb 2018 15:17

Instrument :
 BNA_N
 ClientSampled :
 SSTDICC2.5

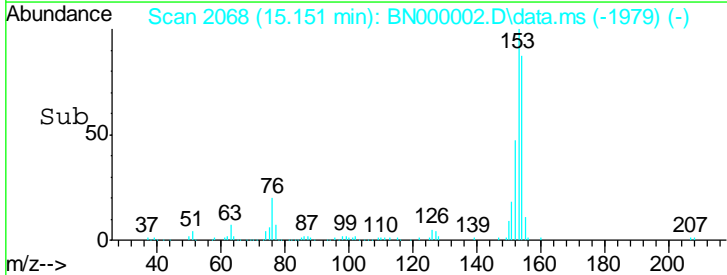
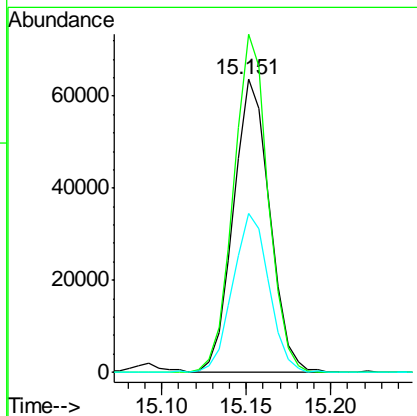
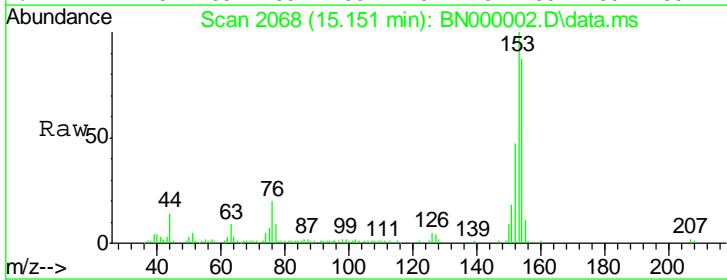
Tgt Ion	Ratio	Lower	Upper
163	100		
194	3.8	3.4	5.2
164	10.0	8.2	12.4

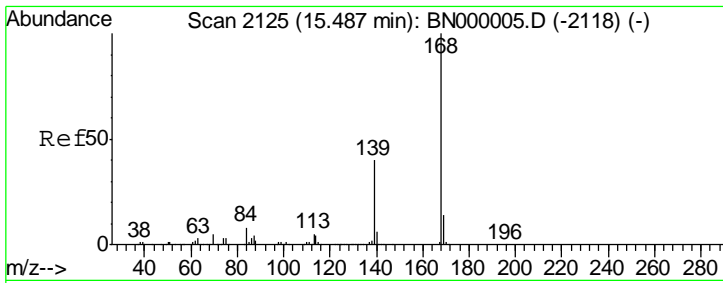
Manual Integrations
APPROVED
 Sohil
 2/6/2018 5:13:47 PM



#51
 Acenaphthene
 Concen: 2.74 ng
 RT: 15.151 min Scan# 2068
 Delta R.T. -0.006 min
 Lab File: BN000002.D
 Acq: 01 Feb 2018 15:17

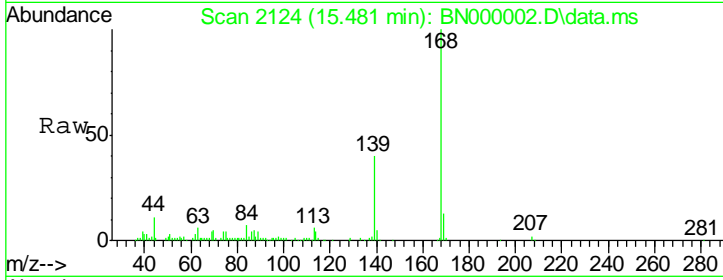
Tgt Ion	Ratio	Lower	Upper
154	100		
153	115.5	90.4	135.6
152	54.3	41.6	62.4





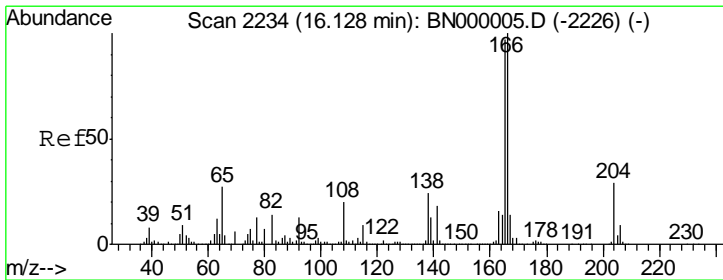
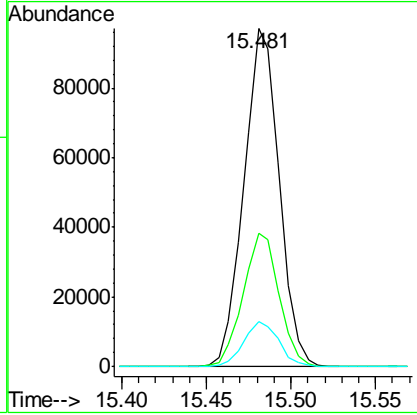
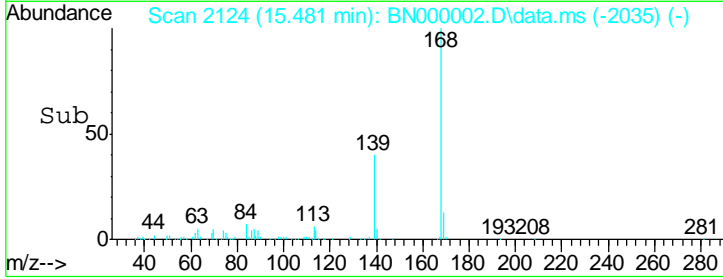
#54
 Dibenzofuran
 Concen: 2.73 ng
 RT: 15.481 min Scan# 21
 Delta R.T. -0.006 min
 Lab File: BN000002.D
 Acq: 01 Feb 2018 15:17

Instrument :
 BNA_N
 ClientSampled :
 SSTDICC2.5

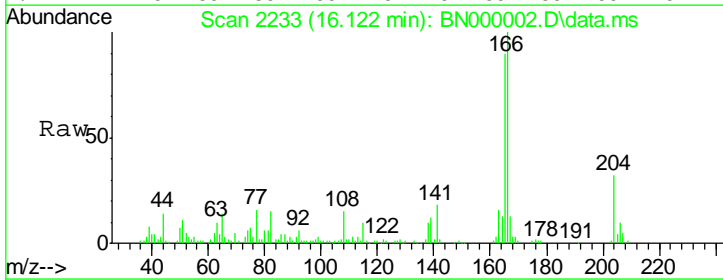


Tgt Ion	Resp	Lower	Upper
168	140677		
139	39.5	28.6	43.0
169	13.3	11.2	16.8

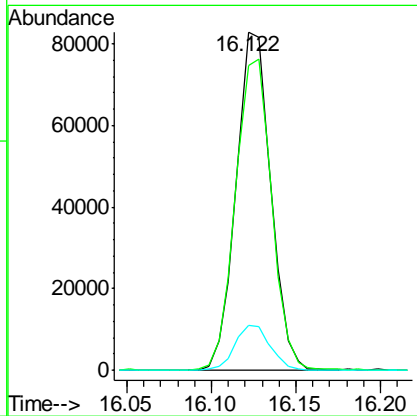
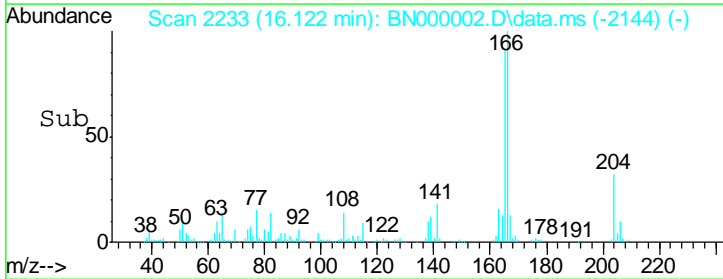
Manual Integrations
APPROVED
 Sohil
 2/6/2018 5:13:47 PM

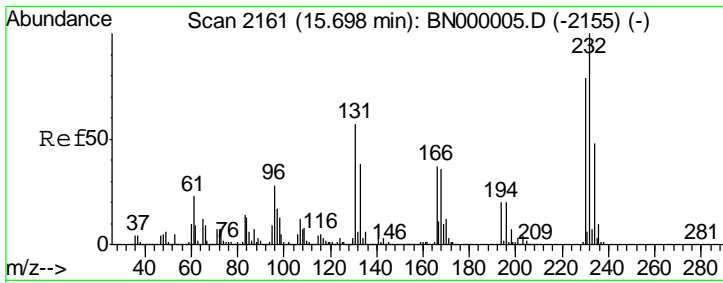


#57
 Fluorene
 Concen: 2.77 ng
 RT: 16.122 min Scan# 2233
 Delta R.T. -0.006 min
 Lab File: BN000002.D
 Acq: 01 Feb 2018 15:17



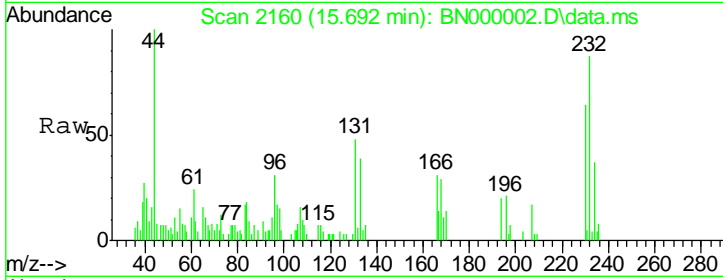
Tgt Ion	Resp	Lower	Upper
166	118448		
165	90.2	80.6	121.0
167	13.2	10.4	15.6





#58
 2,3,4,6-Tetrachlorophenol
 Concen: 1.13 ng
 RT: 15.692 min Scan# 2161
 Delta R.T. -0.006 min
 Lab File: BN000002.D
 Acq: 01 Feb 2018 15:17

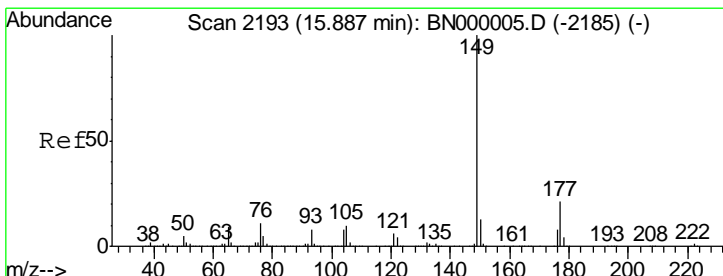
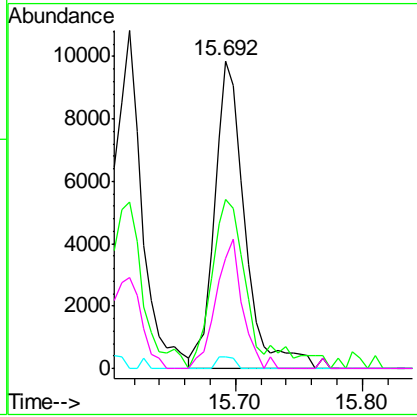
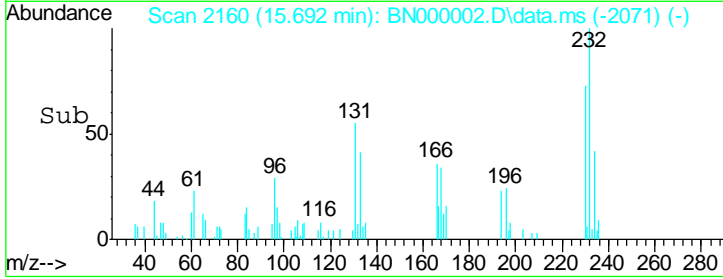
Instrument :
 BNA_N
ClientSampled :
 SSTDICC2.5



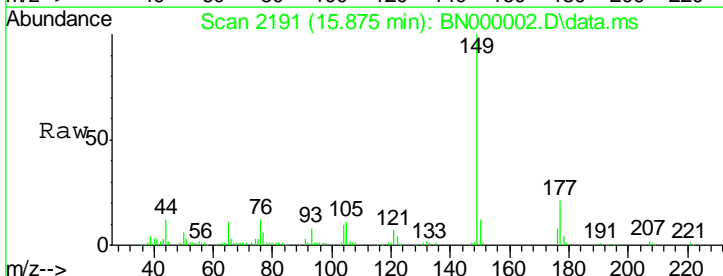
Tgt Ion: 232 Resp: 16525

Ion	Ratio	Lower	Upper
232	100		
131	57.7	33.5	50.3
130	2.3	2.2	3.2
166	36.4	24.8	37.2

Manual Integrations
APPROVED
 Sohil
 2/6/2018 5:13:47 PM

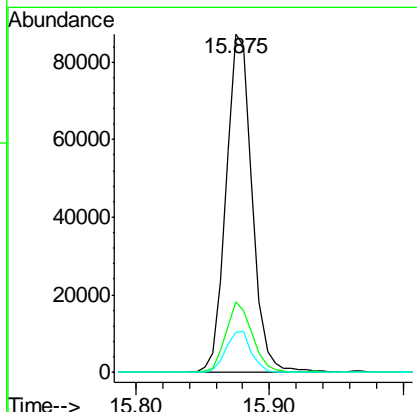
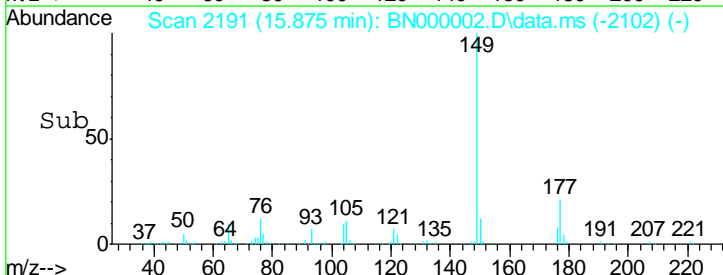


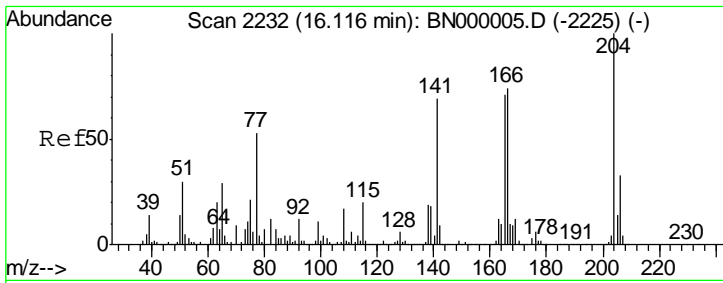
#59
 Diethylphthalate
 Concen: 2.65 ng
 RT: 15.875 min Scan# 2191
 Delta R.T. -0.006 min
 Lab File: BN000002.D
 Acq: 01 Feb 2018 15:17



Tgt Ion: 149 Resp: 119386

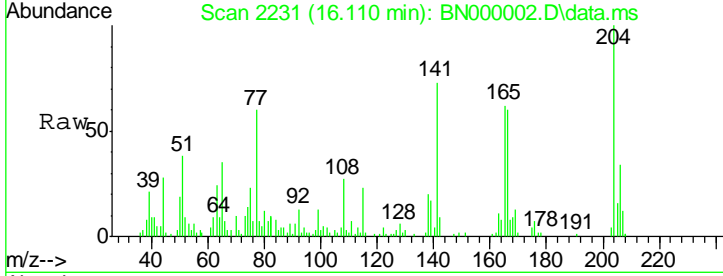
Ion	Ratio	Lower	Upper
149	100		
177	20.8	18.5	27.7
150	11.9	10.2	15.2





#60
 4-Chlorophenyl-phenylether
 Concen: 1.93 ng
 RT: 16.110 min Scan# 2231
 Delta R.T. -0.006 min
 Lab File: BN000002.D
 Acq: 01 Feb 2018 15:17

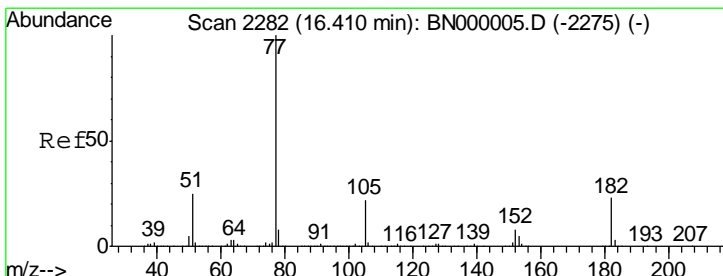
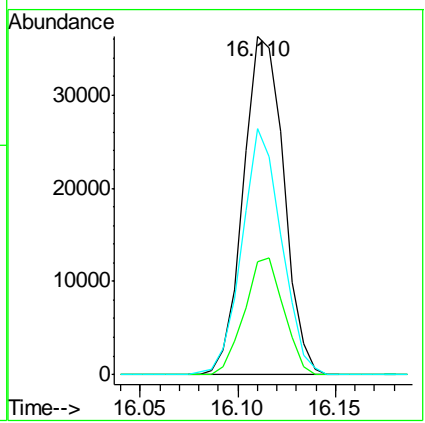
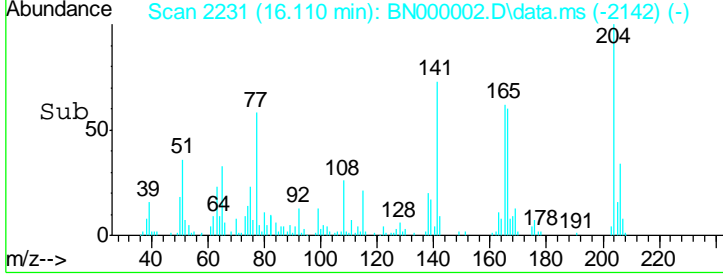
Instrument :
 BNA_N
 ClientSampled :
 SSTDICC2.5



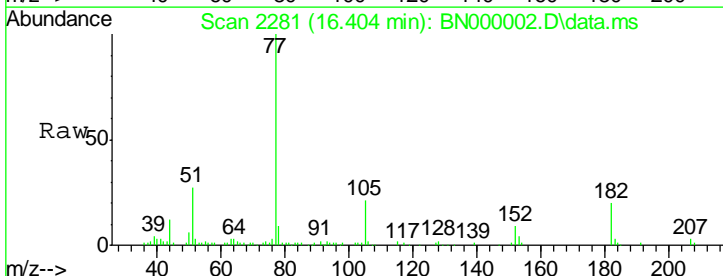
Tgt Ion: 204 Resp: 52084

Ion	Ratio	Lower	Upper
204	100		
206	33.5	26.2	39.2
141	72.8	45.8	68.6

Manual Integrations
APPROVED
 Sohil
 2/6/2018 5:13:47 PM

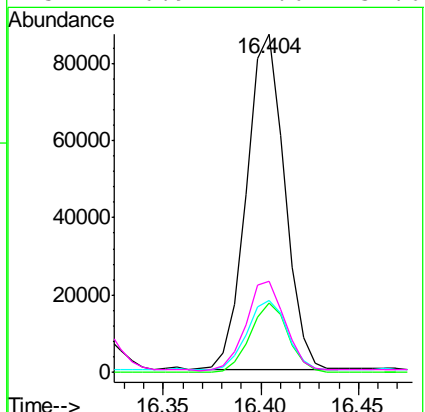
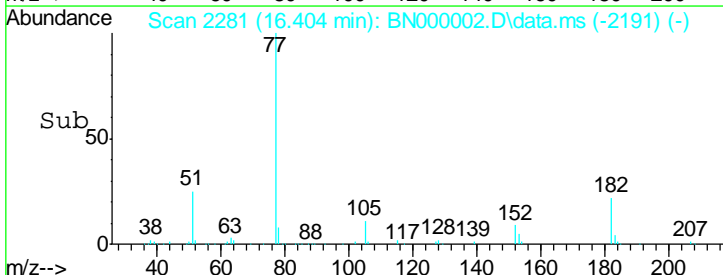


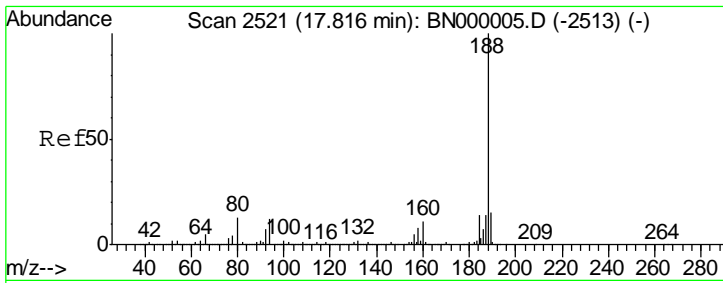
#62
 Azobenzene
 Concen: 4.39 ng
 RT: 16.404 min Scan# 2281
 Delta R.T. -0.000 min
 Lab File: BN000002.D
 Acq: 01 Feb 2018 15:17



Tgt Ion: 77 Resp: 118002

Ion	Ratio	Lower	Upper
77	100		
182	20.4	7.4	47.4
105	21.2	0.3	40.3
51	26.9	11.6	51.6





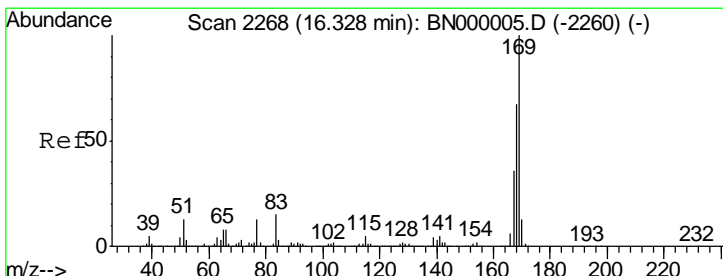
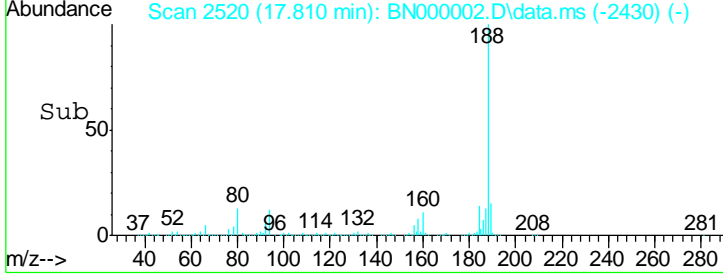
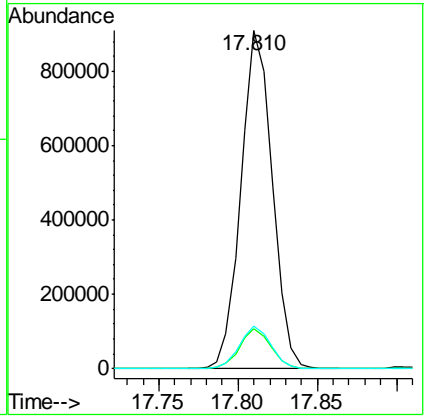
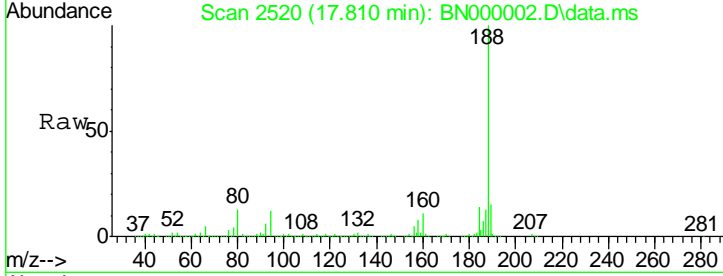
#63
 Phenanthrene-d10
 Concen: 20.00 ng
 RT: 17.810 min Scan# 25
 Delta R.T. -0.000 min
 Lab File: BN000002.D
 Acq: 01 Feb 2018 15:17

Instrument :
 BNA_N
 ClientSampled :
 SSTDICC2.5

Tgt Ion	Resp	Lower	Upper
188	100		
94	11.7	6.9	10.3#
80	12.6	7.7	11.5#

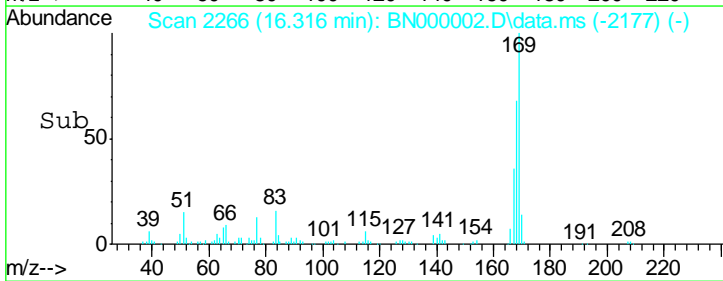
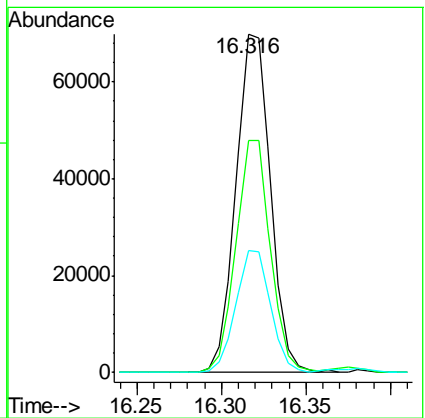
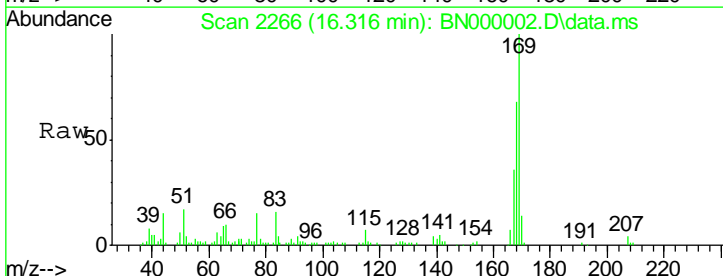
Manual Integrations
 APPROVED

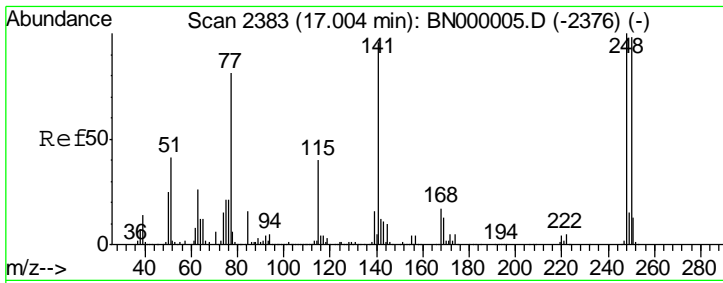
Sohil
 2/6/2018 5:13:47 PM



#65
 n-Nitrosodiphenylamine
 Concen: 2.67 ng
 RT: 16.316 min Scan# 2266
 Delta R.T. -0.006 min
 Lab File: BN000002.D
 Acq: 01 Feb 2018 15:17

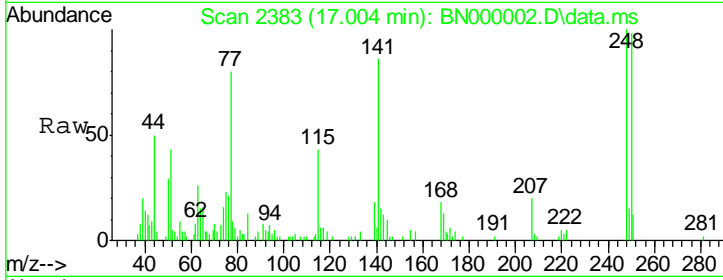
Tgt Ion	Resp	Lower	Upper
169	100		
168	68.4	55.7	83.5
167	35.9	30.1	45.1





#66
 4-Bromophenyl-phenylether
 Concen: 1.53 ng
 RT: 17.004 min Scan# 2383
 Delta R.T. -0.000 min
 Lab File: BN000002.D
 Acq: 01 Feb 2018 15:17

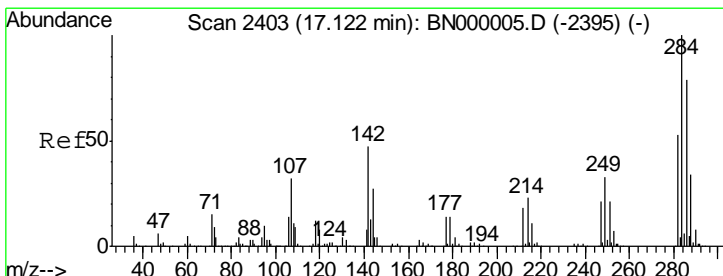
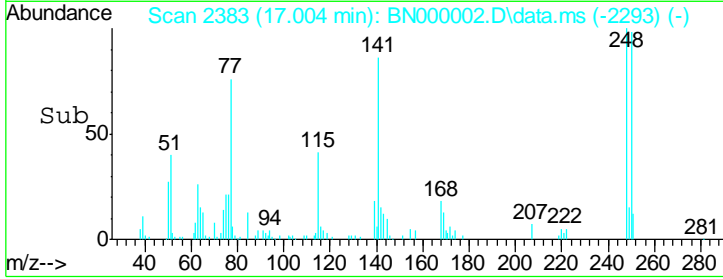
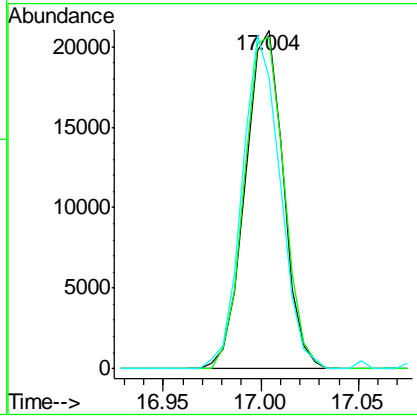
Instrument : BNA_N
 ClientSampled : SSTDICC2.5



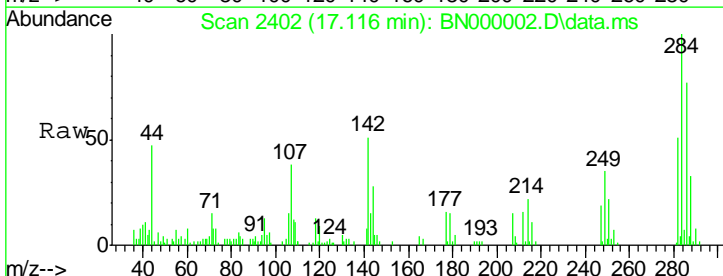
Tgt Ion	Ratio	Lower	Upper
248	100		
250	97.9	77.1	115.7
141	86.0	50.8	76.2#

Manual Integrations
 APPROVED

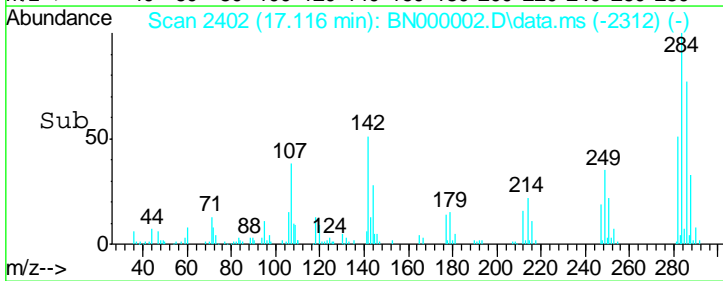
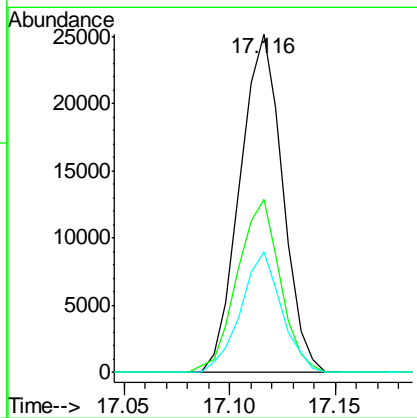
Sohil
 2/6/2018 5:13:47 PM

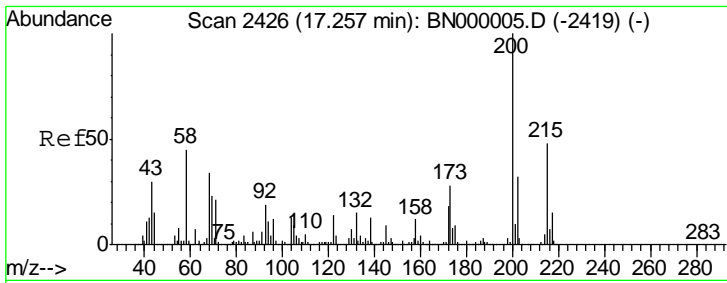


#67
 Hexachlorobenzene
 Concen: 1.72 ng
 RT: 17.116 min Scan# 2402
 Delta R.T. -0.000 min
 Lab File: BN000002.D
 Acq: 01 Feb 2018 15:17



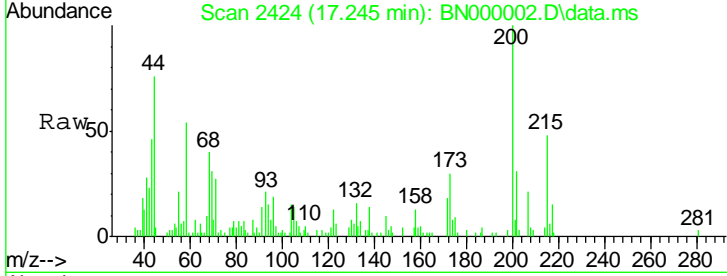
Tgt Ion	Ratio	Lower	Upper
284	100		
142	51.2	26.8	40.2#
249	35.5	26.3	39.5





#68
 Atrazine
 Concen: 1.74 ng
 RT: 17.245 min Scan# 24
 Delta R.T. -0.006 min
 Lab File: BN000002.D
 Acq: 01 Feb 2018 15:17

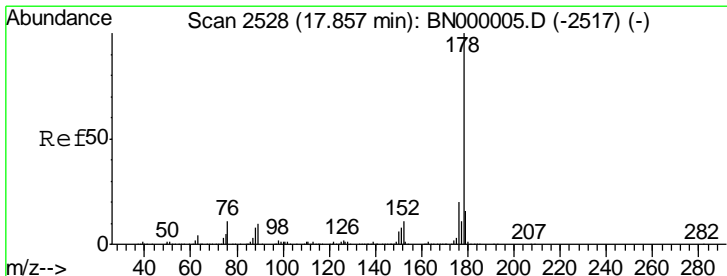
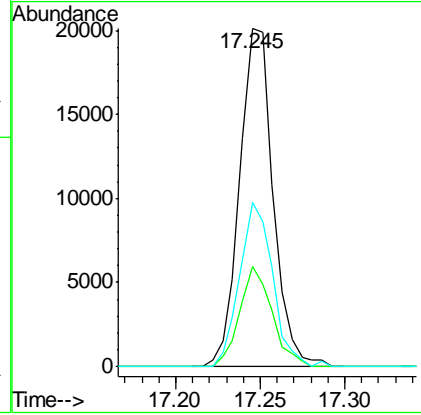
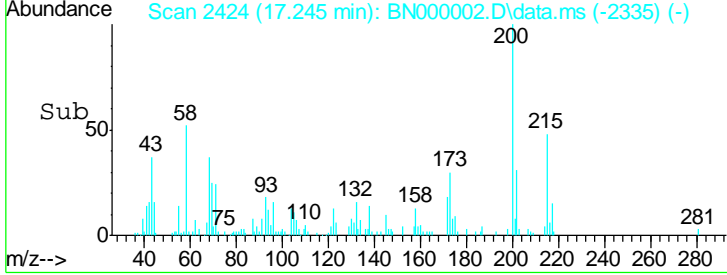
Instrument :
 BNA_N
 ClientSampled :
 SSTDICC2.5



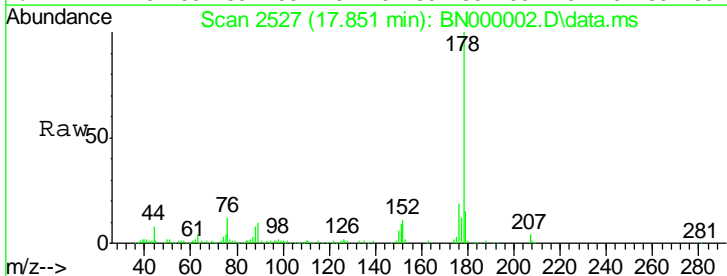
Tgt Ion: 200 Resp: 27833

Ion	Ratio	Lower	Upper
200	100		
173	29.5	5.2	45.2
215	48.5	30.4	70.4

Manual Integrations
APPROVED
 Sohil
 2/6/2018 5:13:47 PM

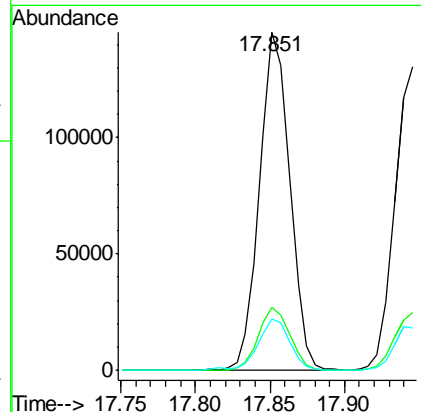
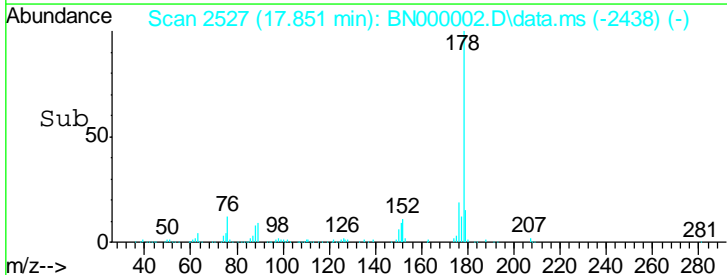


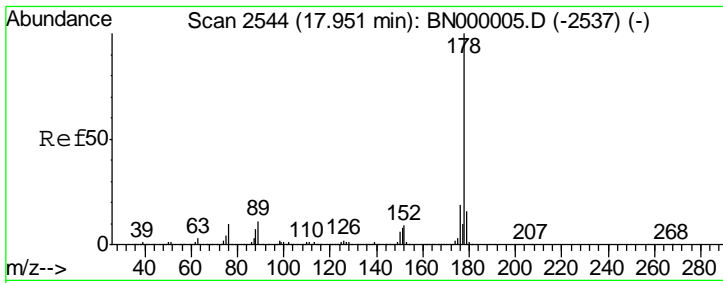
#70
 Phenanthrene
 Concen: 2.93 ng
 RT: 17.851 min Scan# 2527
 Delta R.T. -0.006 min
 Lab File: BN000002.D
 Acq: 01 Feb 2018 15:17



Tgt Ion: 178 Resp: 203467

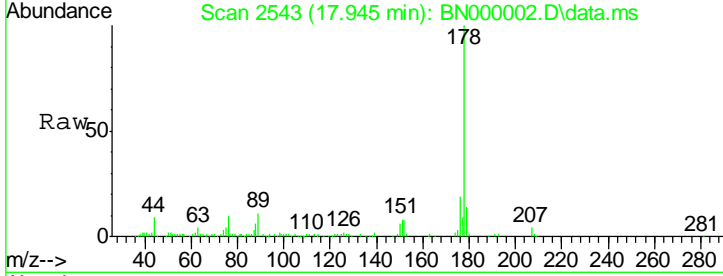
Ion	Ratio	Lower	Upper
178	100		
176	18.8	15.7	23.5
179	15.3	12.5	18.7





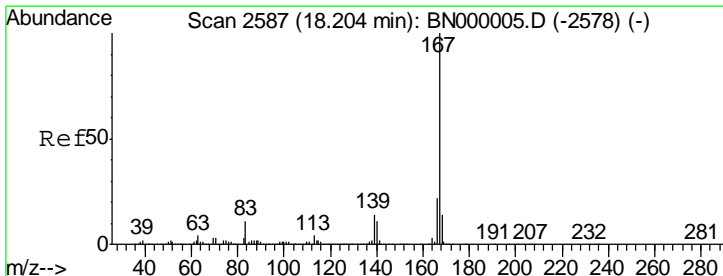
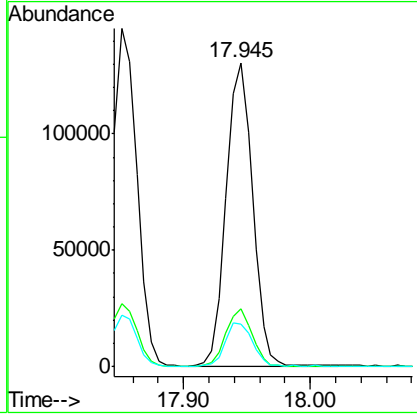
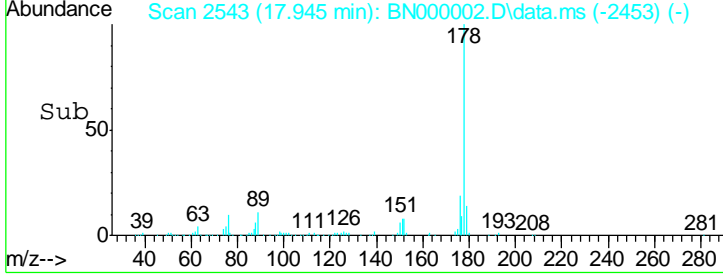
#71
 Anthracene
 Concen: 2.74 ng
 RT: 17.945 min Scan# 25
 Delta R.T. -0.000 min
 Lab File: BN000002.D
 Acq: 01 Feb 2018 15:17

Instrument :
 BNA_N
 ClientSampled :
 SSTDICC2.5

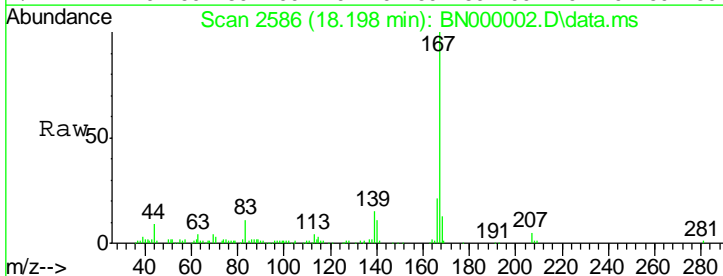


Tgt Ion	Resp	Lower	Upper
178	189772		
176	19.1	16.0	24.0
179	14.2	12.5	18.7

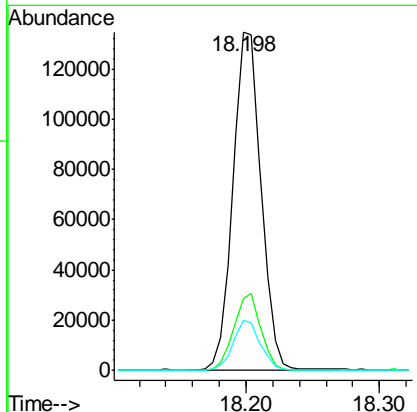
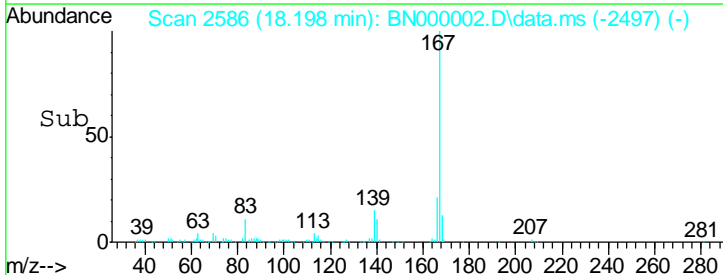
Manual Integrations
 APPROVED
 Sohil
 2/6/2018 5:13:47 PM

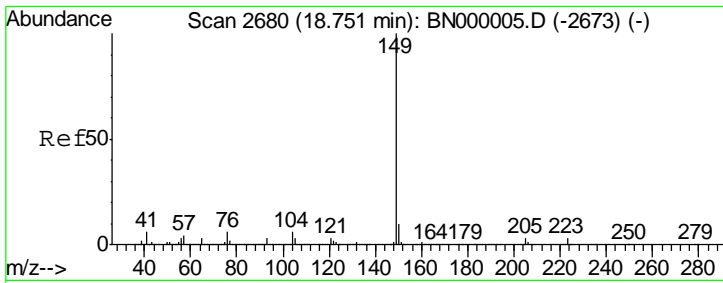


#72
 Carbazole
 Concen: 3.25 ng
 RT: 18.198 min Scan# 2586
 Delta R.T. -0.006 min
 Lab File: BN000002.D
 Acq: 01 Feb 2018 15:17



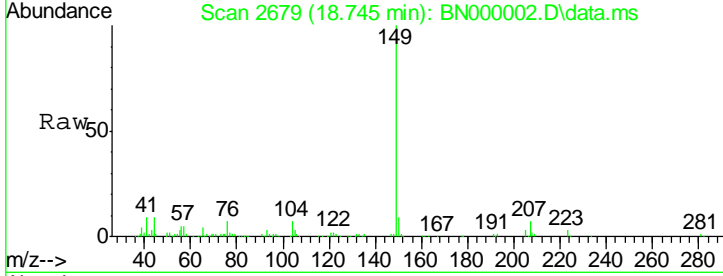
Tgt Ion	Resp	Lower	Upper
167	198682		
166	21.2	18.2	27.4
139	14.8	9.4	14.2#





#73
 Di-n-butylphthalate
 Concen: 2.79 ng
 RT: 18.745 min Scan# 26
 Delta R.T. -0.006 min
 Lab File: BN000002.D
 Acq: 01 Feb 2018 15:17

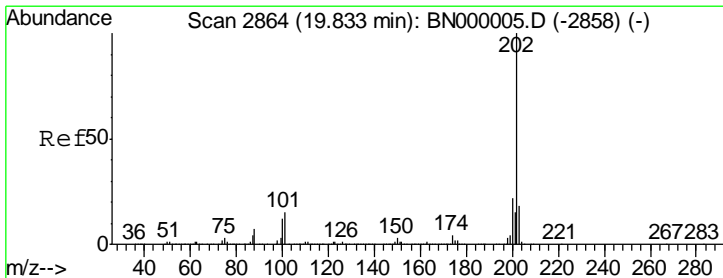
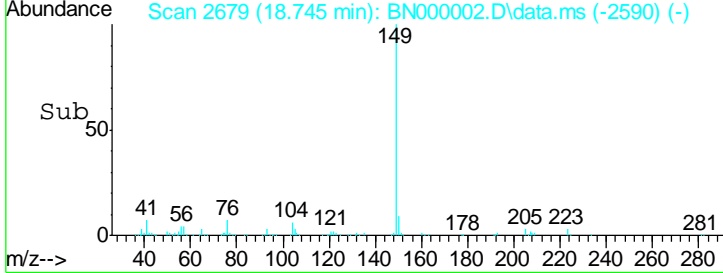
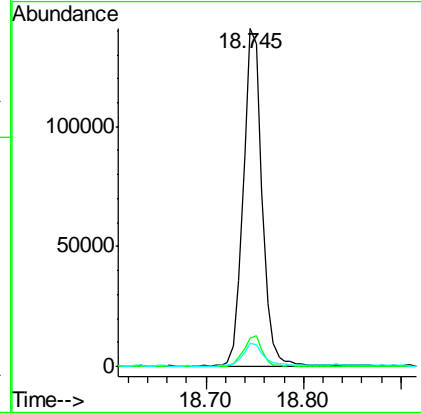
Instrument :
 BNA_N
Client Sampled :
 SSTDICC2.5



Tgt Ion	Ratio	Lower	Upper
149	100		
150	8.5	7.8	11.6
104	6.7	3.9	5.9

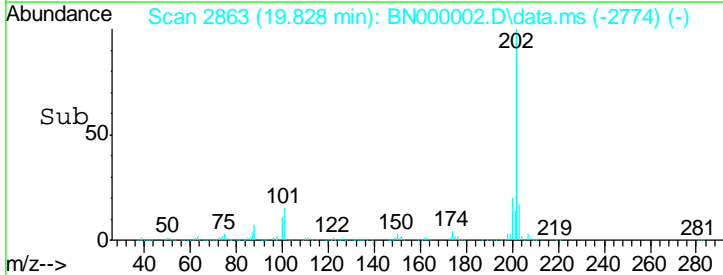
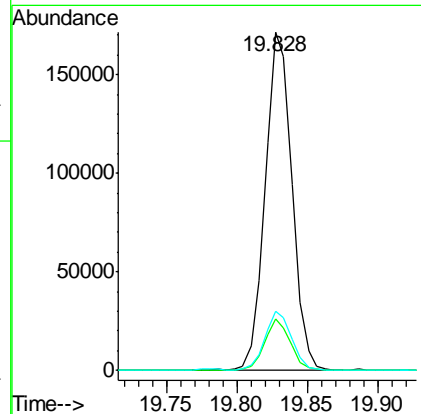
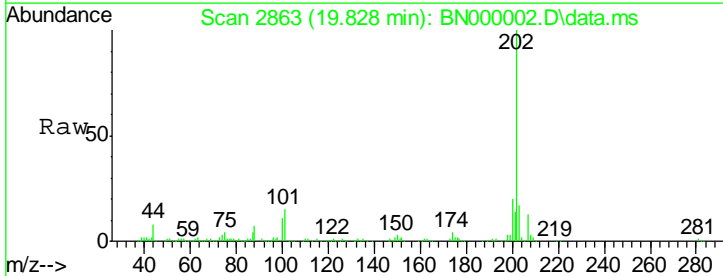
Manual Integrations
APPROVED

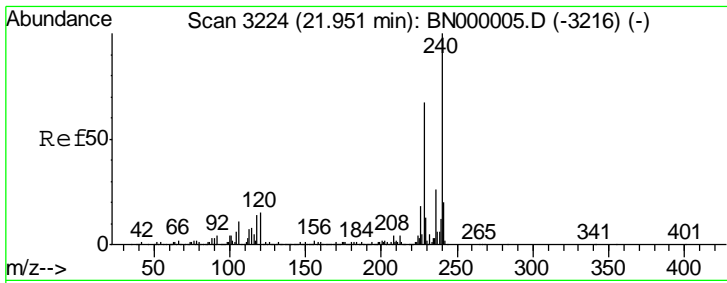
Sohil
 2/6/2018 5:13:47 PM



#74
 Fluoranthene
 Concen: 2.52 ng
 RT: 19.828 min Scan# 2863
 Delta R.T. -0.006 min
 Lab File: BN000002.D
 Acq: 01 Feb 2018 15:17

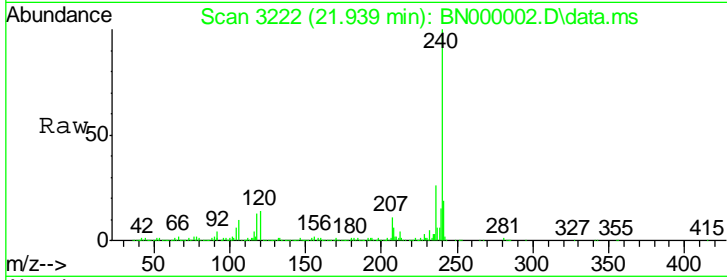
Tgt Ion	Ratio	Lower	Upper
202	100		
101	15.1	0.0	28.9
203	17.3	0.0	37.5





#75
 Chrysene-d12
 Concen: 20.00 ng
 RT: 21.939 min Scan# 32
 Delta R.T. -0.012 min
 Lab File: BN000002.D
 Acq: 01 Feb 2018 15:17

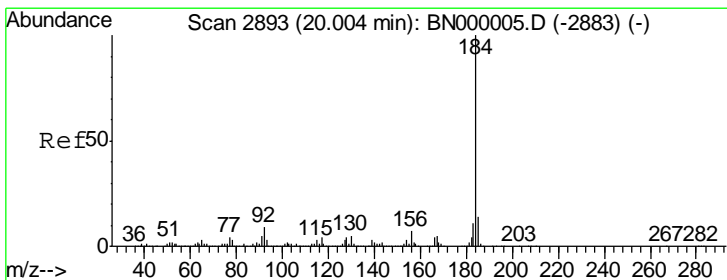
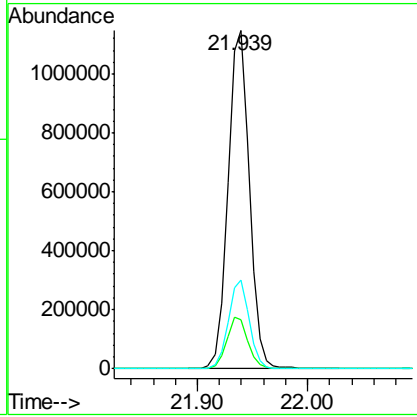
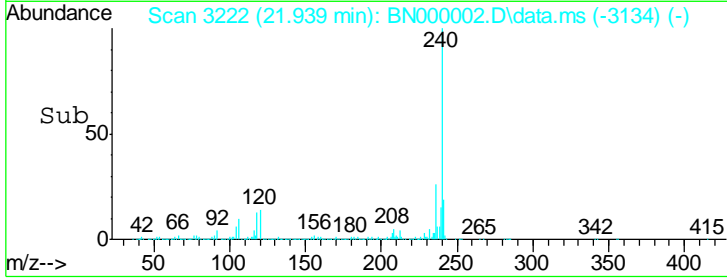
Instrument :
 BNA_N
ClientSampled :
 SSTDICC2.5



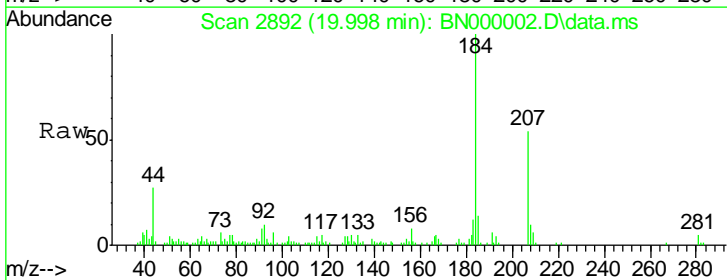
Tgt Ion: 240 Resp: 1554718

Ion	Ratio	Lower	Upper
240	100		
120	14.4	6.8	10.2#
236	26.1	20.9	31.3

Manual Integrations
APPROVED
 Sohil
 2/6/2018 5:13:47 PM

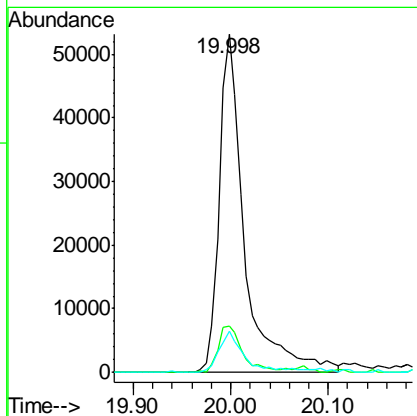
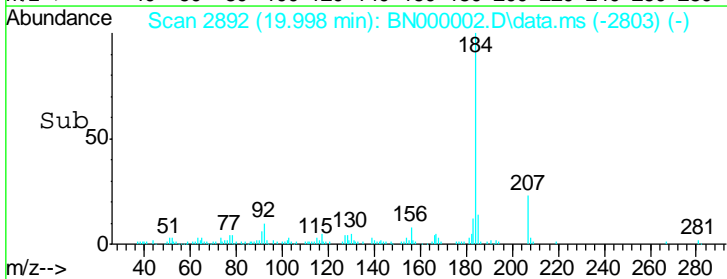


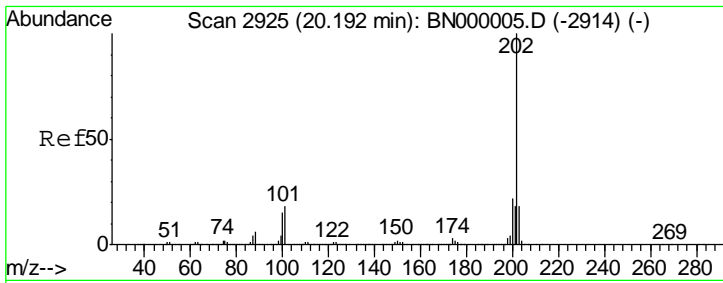
#76
 Benzidine
 Concen: 3.12 ng
 RT: 19.998 min Scan# 2892
 Delta R.T. -0.006 min
 Lab File: BN000002.D
 Acq: 01 Feb 2018 15:17



Tgt Ion: 184 Resp: 95361

Ion	Ratio	Lower	Upper
184	100		
185	13.7	11.1	16.7
183	12.0	10.6	16.0





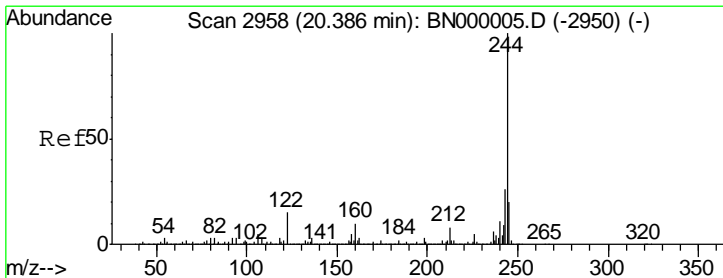
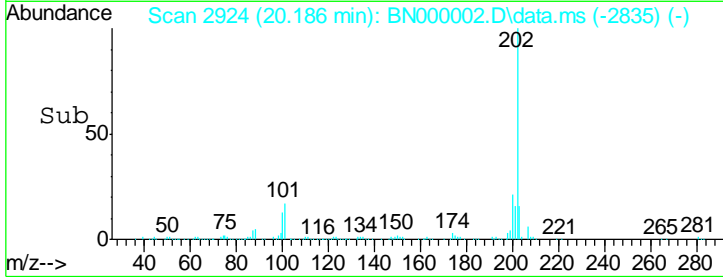
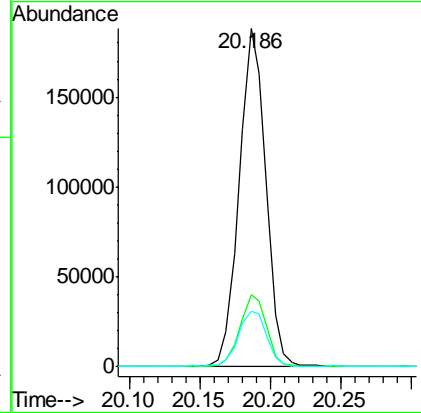
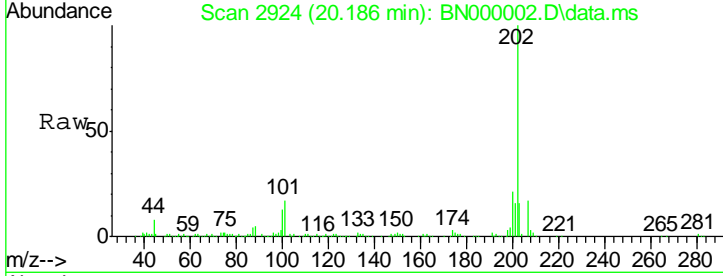
#77
 Pyrene
 Concen: 2.58 ng
 RT: 20.186 min Scan# 29
 Delta R.T. -0.006 min
 Lab File: BN000002.D
 Acq: 01 Feb 2018 15:17

Instrument :
 BNA_N
 ClientSampled :
 SSTDICC2.5

Tgt Ion	Ratio	Lower	Upper
202	100		
200	21.3	16.9	25.3
203	16.4	13.9	20.9

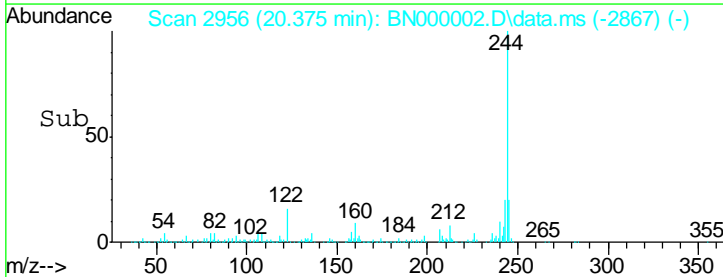
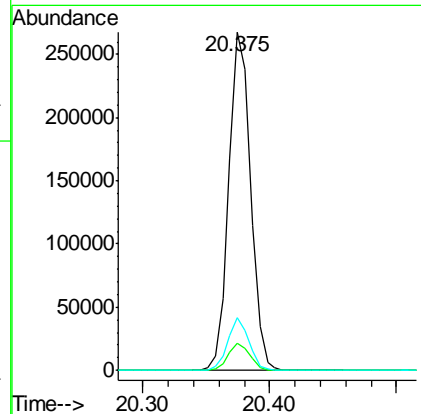
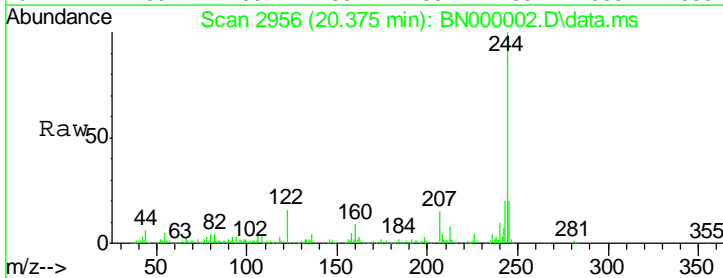
Manual Integrations
 APPROVED

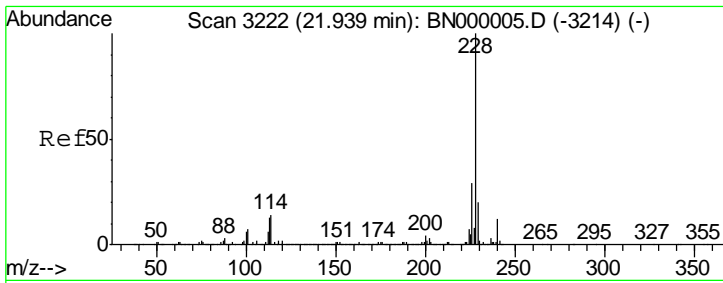
Sohil
 2/6/2018 5:13:47 PM



#78
 Terphenyl-d14
 Concen: 4.39 ng
 RT: 20.375 min Scan# 2956
 Delta R.T. -0.006 min
 Lab File: BN000002.D
 Acq: 01 Feb 2018 15:17

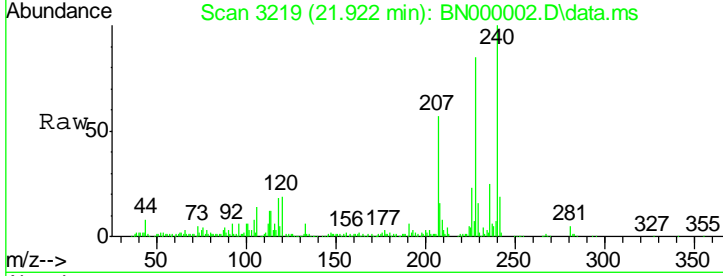
Tgt Ion	Ratio	Lower	Upper
244	100		
212	8.1	5.8	8.8
122	15.7	7.0	10.4#





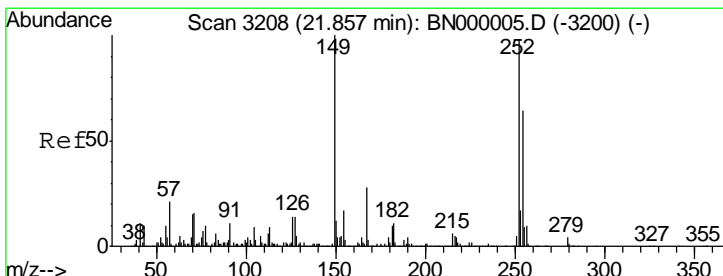
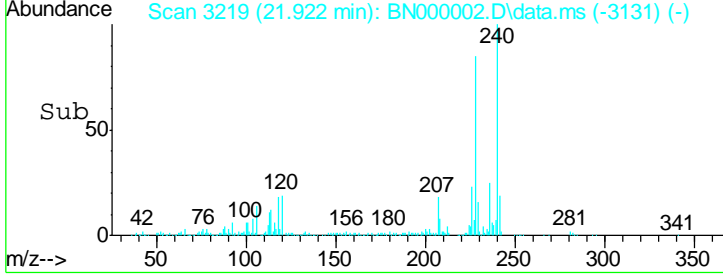
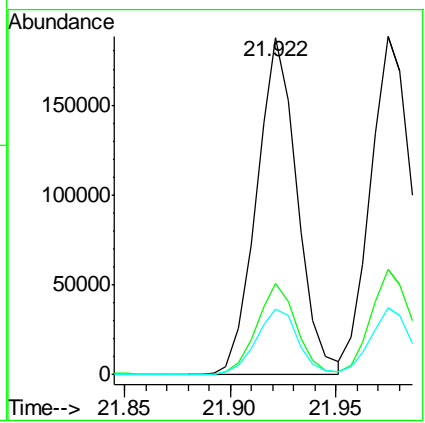
#80
 Benzo(a)anthracene
 Concen: 2.59 ng
 RT: 21.922 min Scan# 3219
 Delta R.T. -0.012 min
 Lab File: BN000002.D
 Acq: 01 Feb 2018 15:17

Instrument :
 BNA_N
ClientSampled :
 SSTDICC2.5

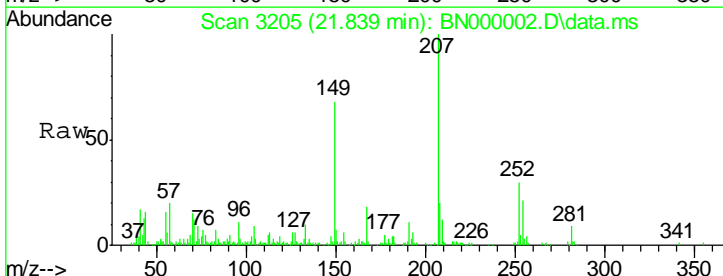


Tgt Ion	Ratio	Lower	Upper
228	100		
226	27.2	22.7	34.1
229	19.4	16.2	24.2

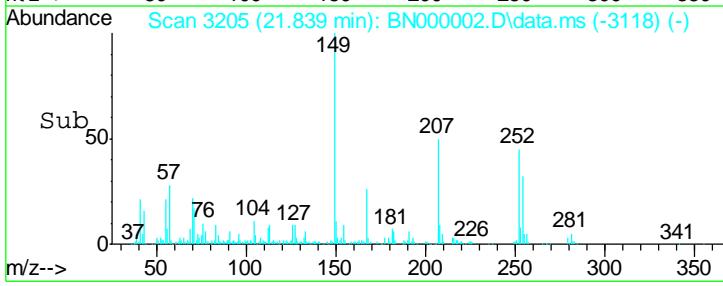
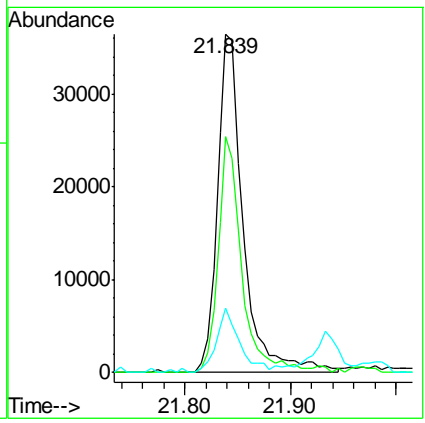
Manual Integrations
APPROVED
 Sohil
 2/6/2018 5:13:47 PM

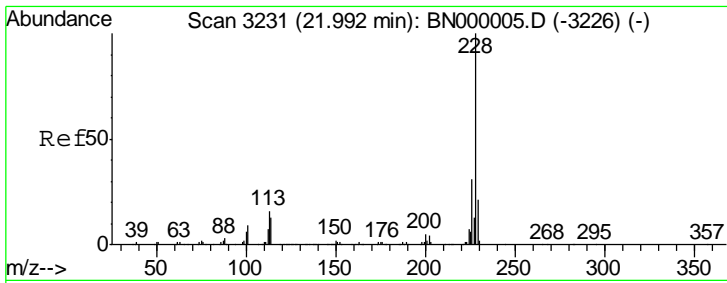


#81
 3,3'-Dichlorobenzidine
 Concen: 1.66 ng
 RT: 21.839 min Scan# 3205
 Delta R.T. -0.018 min
 Lab File: BN000002.D
 Acq: 01 Feb 2018 15:17



Tgt Ion	Ratio	Lower	Upper
252	100		
254	69.7	50.8	76.2
126	19.0	7.4	11.2#



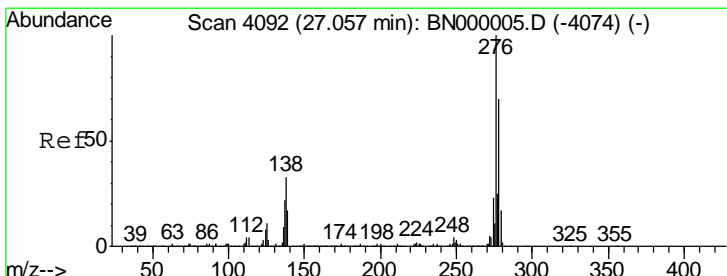
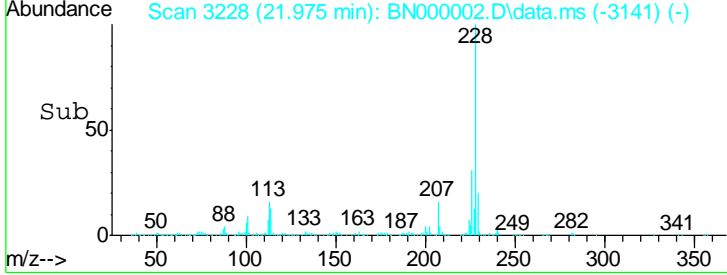
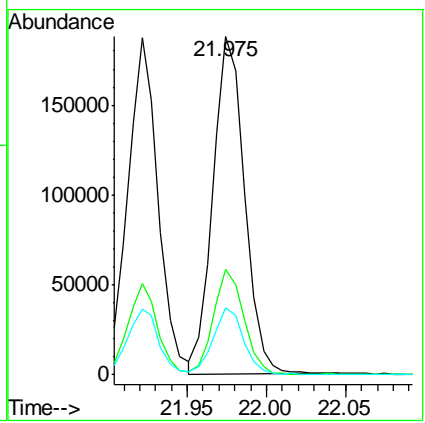
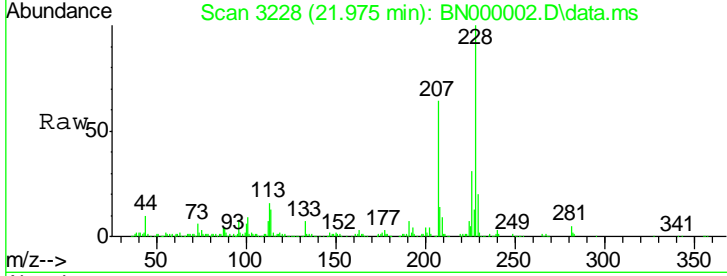


#82
 Chrysene
 Concen: 2.78 ng
 RT: 21.975 min Scan# 32
 Delta R.T. -0.018 min
 Lab File: BN000002.D
 Acq: 01 Feb 2018 15:17

Instrument :
 BNA_N
ClientSampled :
 SSTDICC2.5

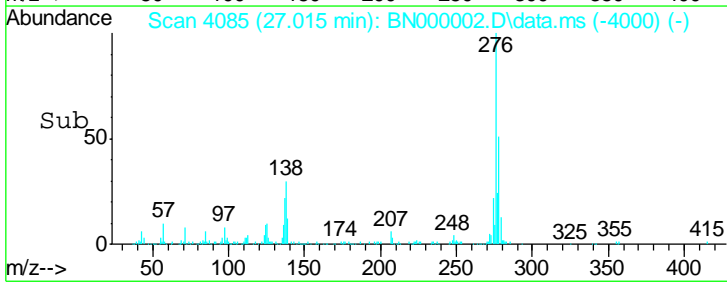
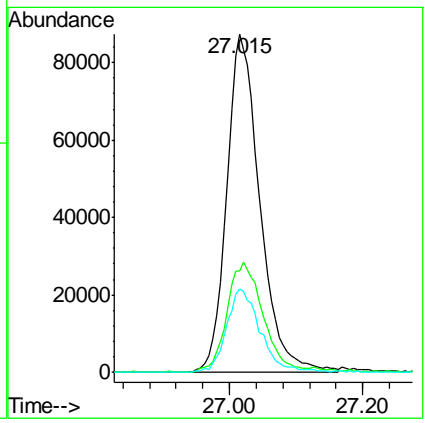
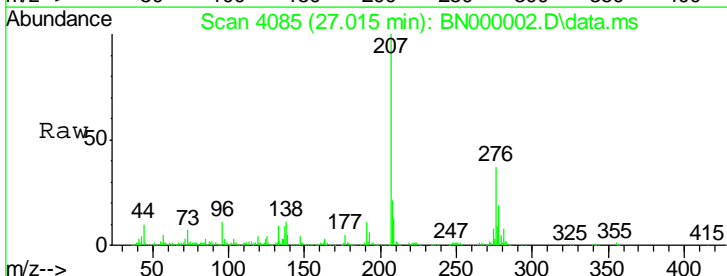
Tgt Ion	Ratio	Lower	Upper
228	100		
226	30.9	24.9	37.3
229	19.6	15.0	22.4

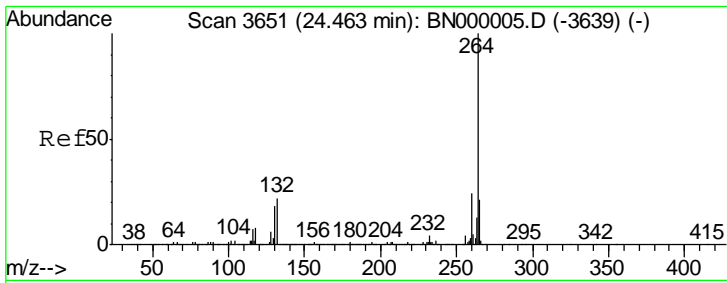
Manual Integrations
APPROVED
 Sohil
 2/6/2018 5:13:47 PM



#85
 Indeno(1,2,3-cd)pyrene
 Concen: 2.57 ng
 RT: 27.015 min Scan# 4085
 Delta R.T. -0.029 min
 Lab File: BN000002.D
 Acq: 01 Feb 2018 15:17

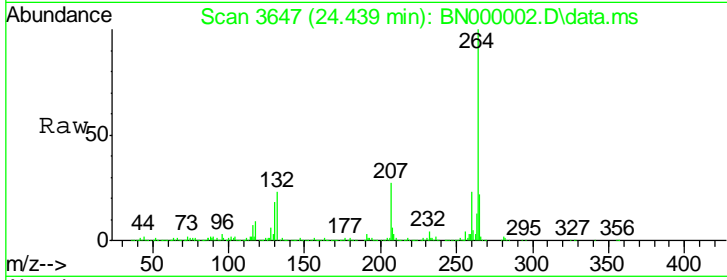
Tgt Ion	Ratio	Lower	Upper
276	100		
138	35.3	16.0	24.0#
277	25.0	20.0	30.0





#86
 Perylene-d12
 Concen: 20.00 ng
 RT: 24.439 min Scan# 36
 Delta R.T. -0.018 min
 Lab File: BN000002.D
 Acq: 01 Feb 2018 15:17

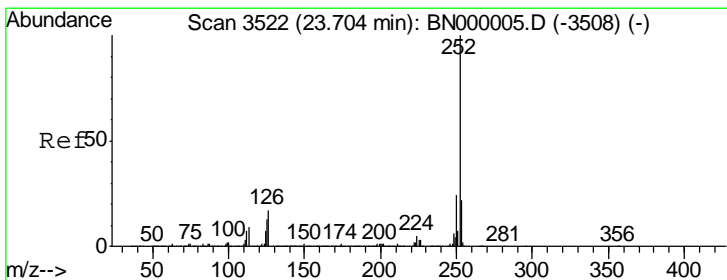
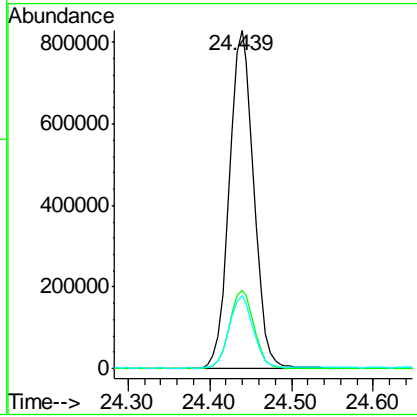
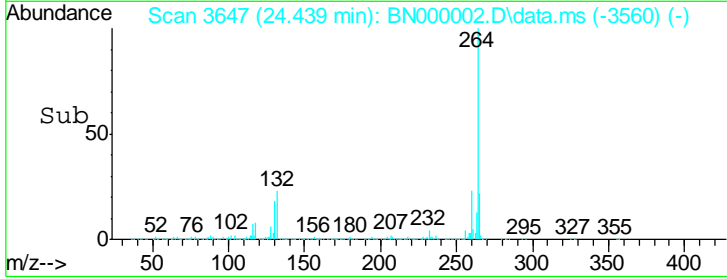
Instrument :
 BNA_N
ClientSampled :
 SSTDICC2.5



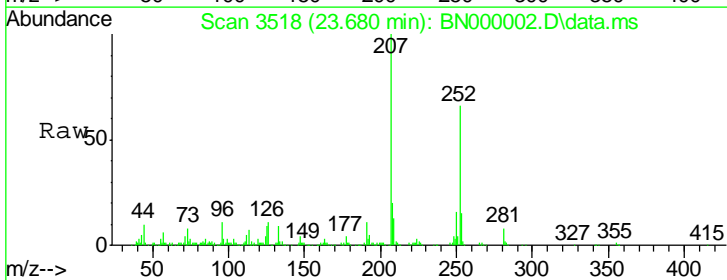
Tgt Ion: 264 Resp: 1719681

Ion	Ratio	Lower	Upper
264	100		
260	23.2	17.4	26.0
265	21.6	17.7	26.5

Manual Integrations
APPROVED
 Sohil
 2/6/2018 5:13:47 PM

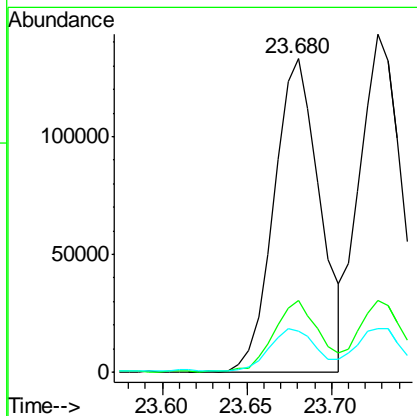
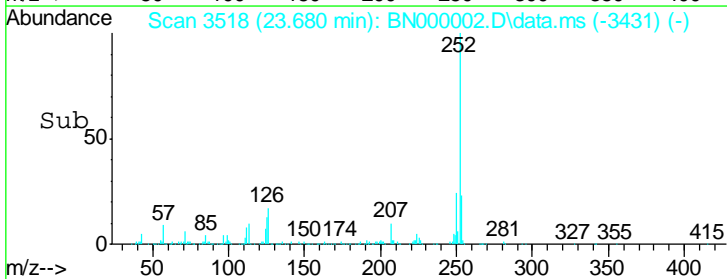


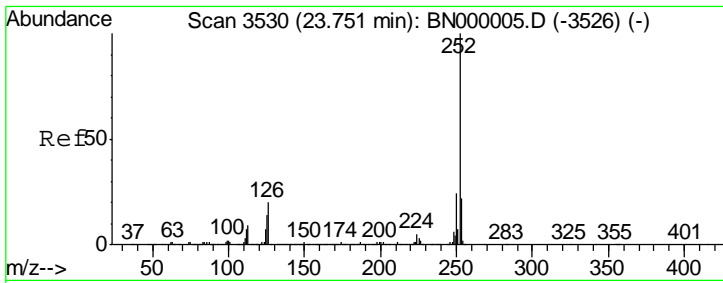
#87
 Benzo(b)fluoranthene
 Concen: 2.42 ng
 RT: 23.680 min Scan# 3518
 Delta R.T. -0.018 min
 Lab File: BN000002.D
 Acq: 01 Feb 2018 15:17



Tgt Ion: 252 Resp: 251369

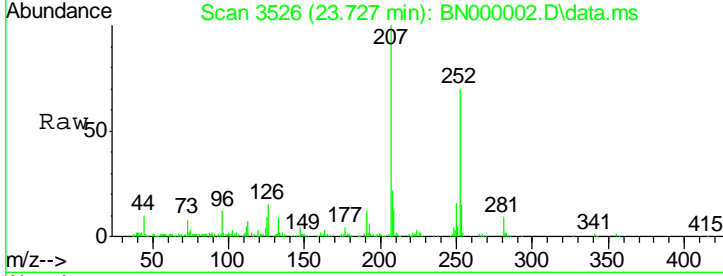
Ion	Ratio	Lower	Upper
252	100		
253	23.0	18.2	27.4
125	13.0	7.2	10.8#





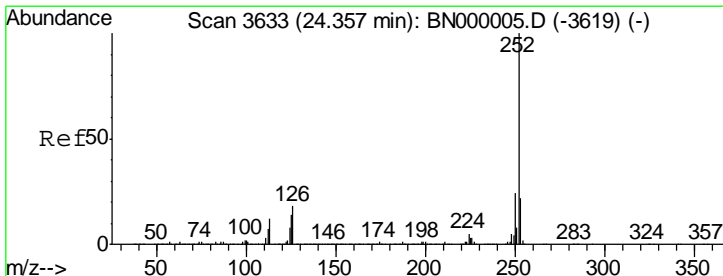
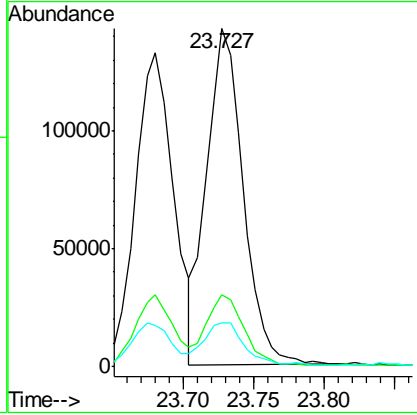
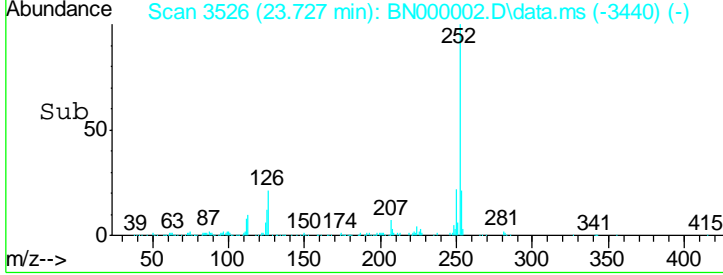
#88
 Benzo(k)fluoranthene
 Concen: 2.50 ng
 RT: 23.727 min Scan# 3526
 Delta R.T. -0.024 min
 Lab File: BN000002.D
 Acq: 01 Feb 2018 15:17

Instrument : BNA_N
 Client Sampled : SSTDICC2.5

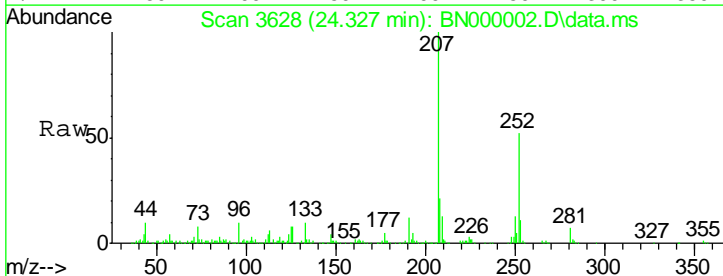


Tgt Ion	Ratio	Lower	Upper
252	100		
253	21.3	17.4	26.2
125	13.0	6.6	9.8#

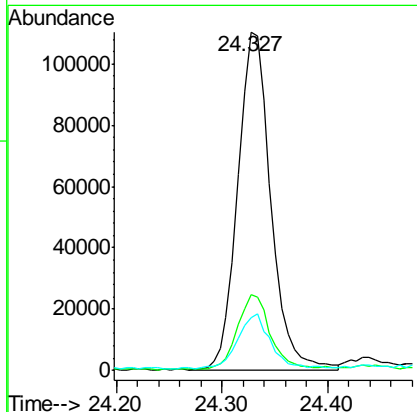
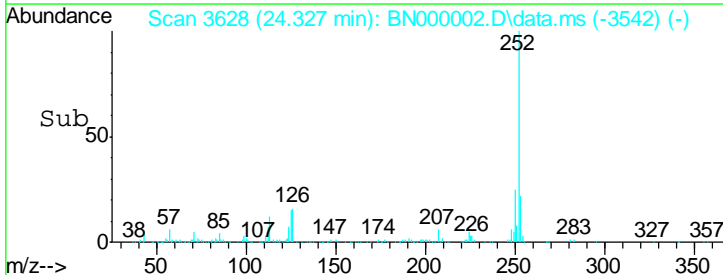
Manual Integrations APPROVED
 Sohil
 2/6/2018 5:13:47 PM

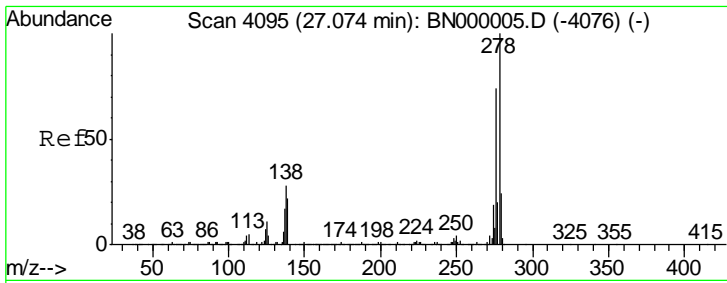


#89
 Benzo(a)pyrene
 Concen: 2.44 ng
 RT: 24.327 min Scan# 3628
 Delta R.T. -0.024 min
 Lab File: BN000002.D
 Acq: 01 Feb 2018 15:17



Tgt Ion	Ratio	Lower	Upper
252	100		
253	22.2	18.3	27.5
125	15.7	7.3	10.9#



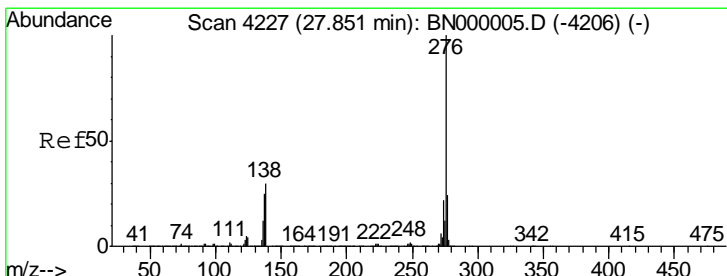
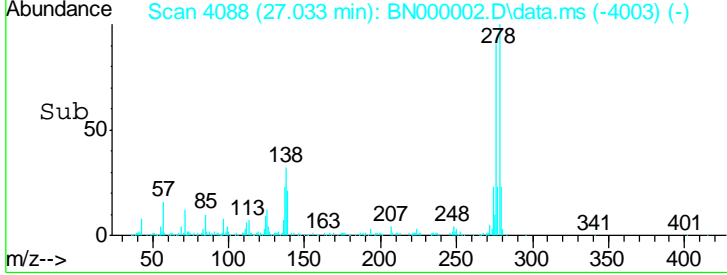
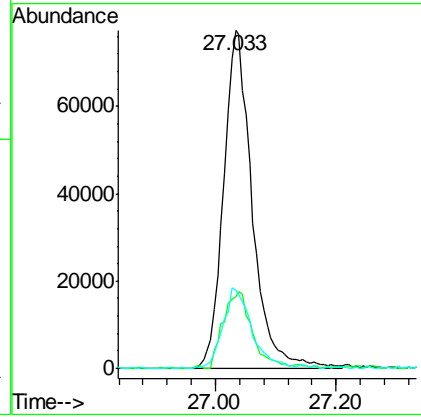
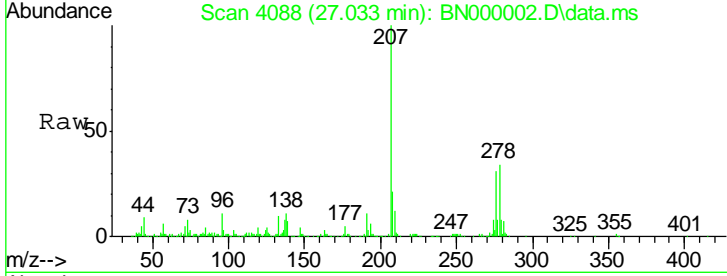


#90
 Dibenzo(a,h)anthracene
 Concen: 2.51 ng
 RT: 27.033 min Scan# 40
 Delta R.T. -0.029 min
 Lab File: BN000002.D
 Acq: 01 Feb 2018 15:17

Instrument :
 BNA_N
ClientSampled :
 SSTDICC2.5

Tgt Ion	Resp	Lower	Upper
278	100		
139	21.2	9.8	14.6#
279	23.2	18.4	27.6

Manual Integrations
APPROVED
 Sohil
 2/6/2018 5:13:47 PM



#91
 Benzo(g,h,i)perylene
 Concen: 2.56 ng
 RT: 27.798 min Scan# 4218
 Delta R.T. -0.035 min
 Lab File: BN000002.D
 Acq: 01 Feb 2018 15:17

Tgt Ion	Resp	Lower	Upper
276	100		
277	23.1	18.3	27.5
138	29.8	13.9	20.9#

