

Data Path : Z:\SVOASRV\HPCHEM1\BNA N\DATA\BN020320\
 Data File : BN009574.D
 Acq On : 04 Feb 2020 21:03
 Operator : CG/JU
 Sample : L1302-12
 Misc :
 ALS Vial : 50 Sample Multiplier: 1

Instrument :
 BNA_N
 ClientSampleId :
 C5AM8

Quant Time: Feb 05 01:05:40 2020
 Quant Method : Z:\SVOASRV\HPCHEM1\BNA_N\METHODS\SOM-EPA-BN020320MA.M
 Quant Title : SVOA CALIBRATION
 QLast Update : Mon Feb 03 16:39:56 2020
 Response via : Initial Calibration

Internal Standards	R.T.	QIon	Response	Conc	Units	Dev(Min)
1) 1,4-Dichlorobenzene-d4	7.44	152	156033	20.00	ng/ul	0.00
18) Naphthalene-d8	10.19	136	662428	20.00	ng/ul	0.00
35) Acenaphthene-d10	14.07	164	423917	20.00	ng/ul	0.00
61) Phenanthrene-d10	16.83	188	892754	20.00	ng/ul	0.00
77) Chrysene-d12	21.04	240	802418	20.00	ng/ul	0.00
85) Perylene-d12	23.15	264	899442	20.00	ng/ul	0.00

System Monitoring Compounds

3) 1,4-Dioxane-d8	3.08	96	4247	1.12	ng/uL	0.00
5) Phenol-d5	6.64	99	87876	6.46	ng/ul	0.00
7) Bis-(2-Chloroethyl)ether-d	6.80	67	66242	7.25	ng/ul	0.00
9) 2-Chlorophenol-d4	6.98	132	70360	7.02	ng/ul	0.00
13) 4-Methylphenol-d8	8.15	113	52800	4.87	ng/ul	0.00
19) Nitrobenzene-d5	8.58	128	32878	6.67	ng/ul	0.00
22) 2-Nitrophenol-d4	9.30	143	36160	6.58	ng/ul	0.00
26) 2,4-Dichlorophenol-d3	9.83	165	67465	6.55	ng/ul	0.00
29) 4-Chloroaniline-d4	10.35	131	76633	6.92	ng/ul	0.00
43) Dimethylphthalate-d6	13.50	166	230795	7.46	ng/ul	0.00
46) Acenaphthylene-d8	13.76	160	260672	6.97	ng/ul	0.00
51) 4-Nitrophenol-d4	14.32	143	22537	3.86	ng/ul	0.00
57) Fluorene-d10	15.07	176	208212	7.65	ng/ul	0.00
62) 4,6-Dinitro-2-methylphenol	15.22	200	19070	3.42	ng/ul	0.00
70) Anthracene-d10	16.93	188	302961	7.47	ng/ul	0.00
78) Pyrene-d10	19.23	212	378104	8.96	ng/ul	0.00
89) Benzo(a)pyrene-d12	23.02	264	375586	8.48	ng/ul	0.00

Target Compounds

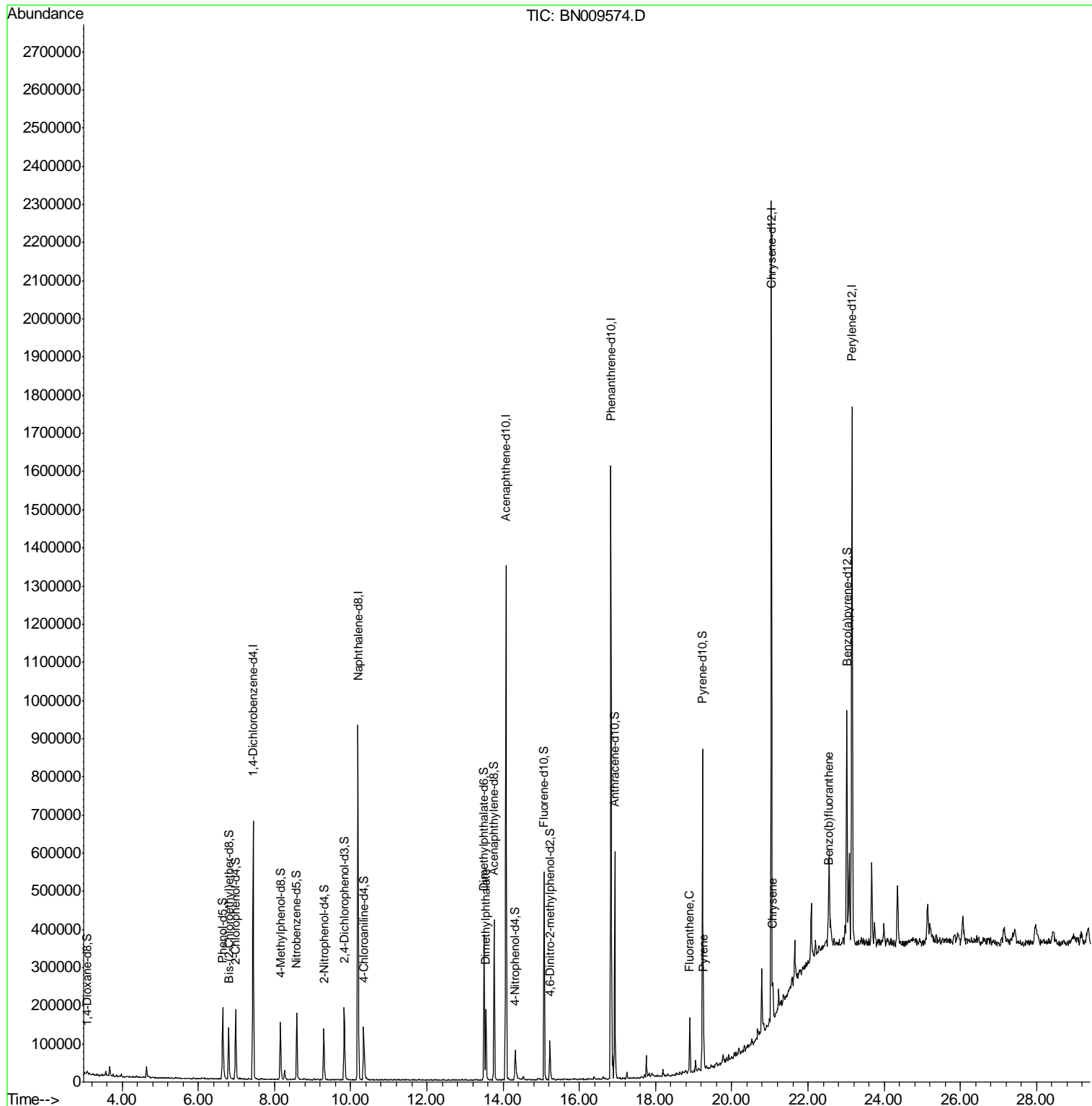
					Ovalue
44) Dimethylphthalate	13.55	163	111594	3.398	ng/ul 98
76) Fluoranthene	18.90	202	82746	1.424	ng/ul# 96
79) Pyrene	19.26	202	71783	1.225	ng/ul 98
84) Chrysene	21.07	228	55767	1.011	ng/ul 96
87) Benzo(b)fluoranthene	22.53	252	66959	1.190	ng/ul# 92

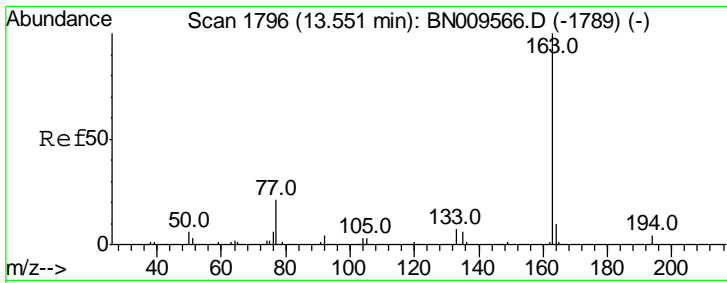
(#) = qualifier out of range (m) = manual integration (+) = signals summed

Data Path : Z:\SVOASRV\HPCHEM1\BNA N\DATA\BN020320\
 Data File : BN009574.D
 Acq On : 04 Feb 2020 21:03
 Operator : CG/JU
 Sample : L1302-12
 Misc :
 ALS Vial : 50 Sample Multiplier: 1

Instrument :
 BNA_N
 ClientSampleId :
 C5AM8

Quant Time: Feb 05 01:05:40 2020
 Quant Method : Z:\SVOASRV\HPCHEM1\BNA_N\METHODS\SOM-EPA-BN020320MA.M
 Quant Title : SVOA CALIBRATION
 QLast Update : Mon Feb 03 16:39:56 2020
 Response via : Initial Calibration

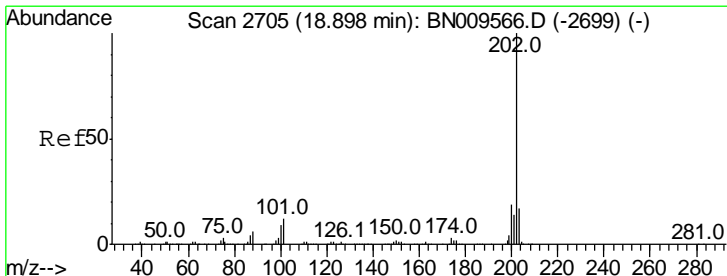
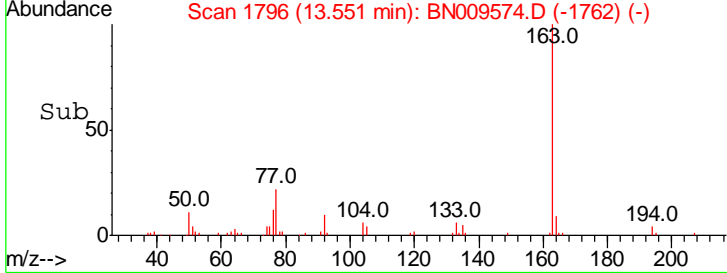
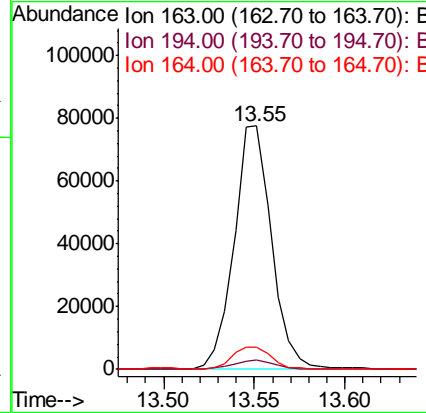
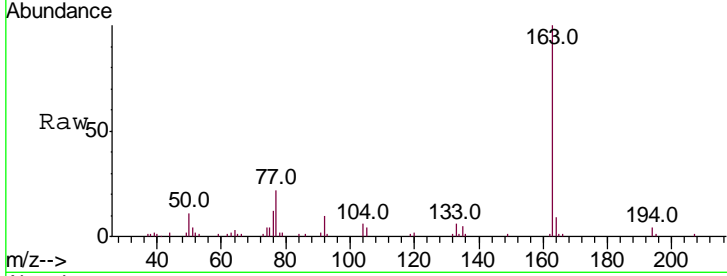




#44
 Dimethylphthalate
 Concen: 3.398 ng/ul
 RT: 13.55 min Scan# 1796
 Delta R.T. 0.00 min
 Lab File: BN009574.D
 Acq: 04 Feb 2020 21:03

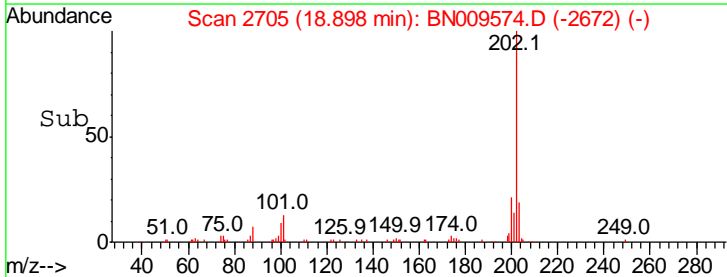
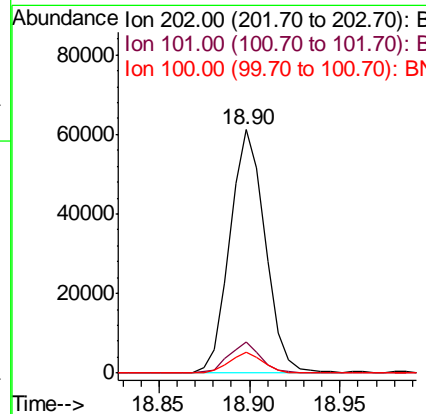
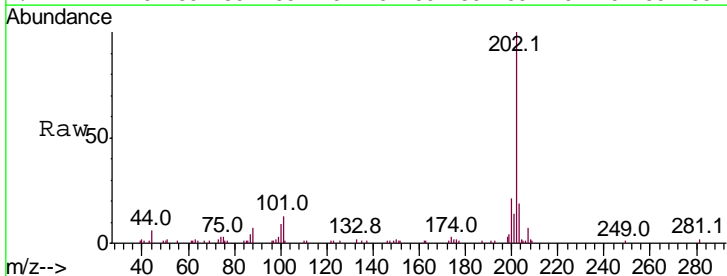
Instrument :
 BNA_N
 ClientSampled :
 C5AM8

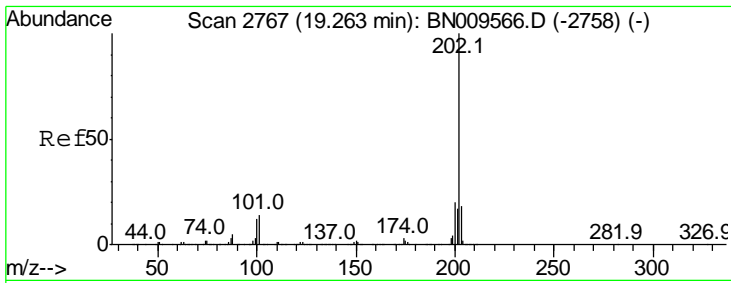
Tgt Ion	Resp	Lower	Upper
163	100		
194	3.8	3.5	5.3
164	9.1	8.0	12.0



#76
 Fluoranthene
 Concen: 1.424 ng/ul
 RT: 18.90 min Scan# 2705
 Delta R.T. -0.01 min
 Lab File: BN009574.D
 Acq: 04 Feb 2020 21:03

Tgt Ion	Resp	Lower	Upper
202	100		
101	14.2	9.2	13.8#
100	8.7	6.9	10.3

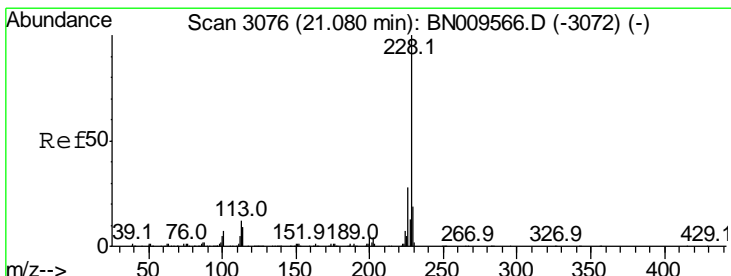
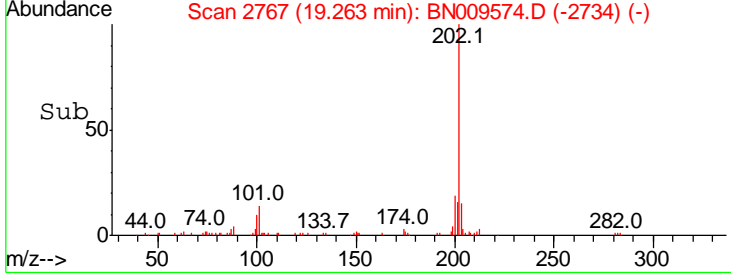
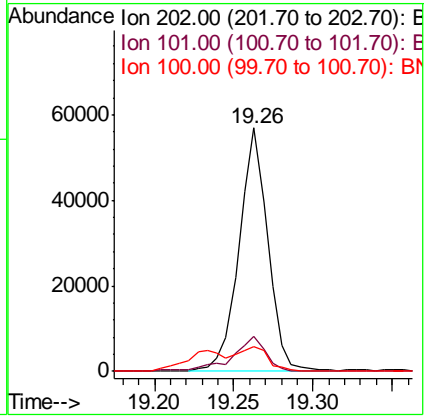
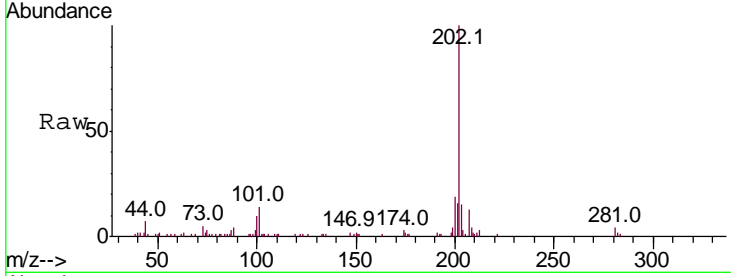




#79
 Pyrene
 Concen: 1.225 ng/ul
 RT: 19.26 min Scan# 2767
 Delta R.T. -0.01 min
 Lab File: BN009574.D
 Acq: 04 Feb 2020 21:03

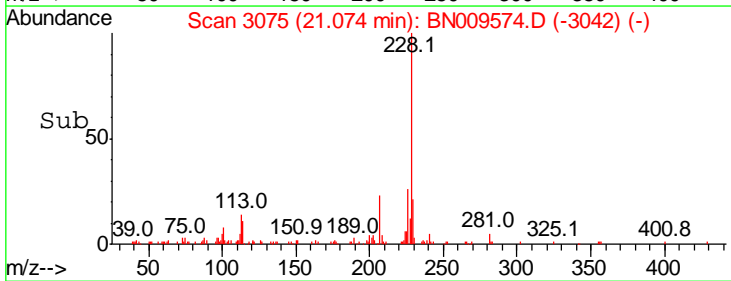
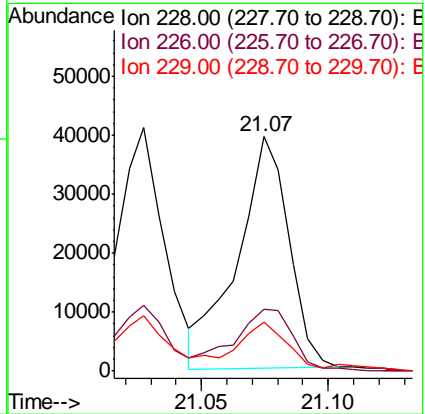
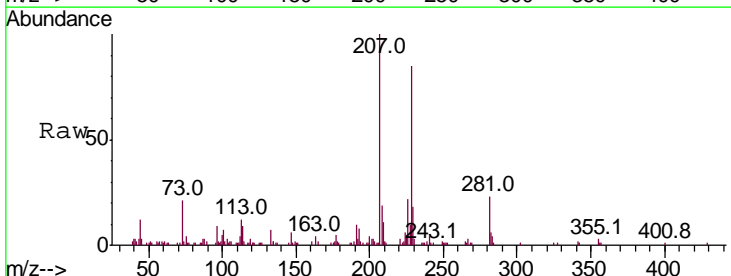
Instrument :
 BNA_N
 ClientSampled :
 C5AM8

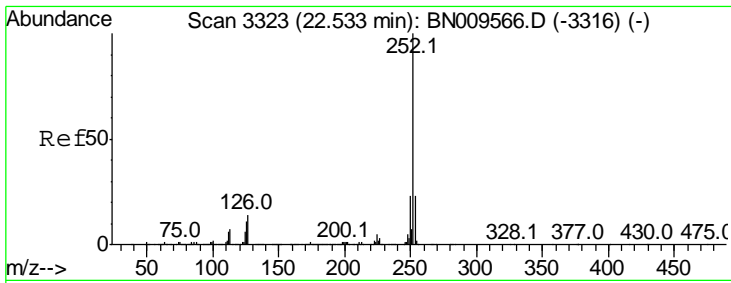
Tgt Ion	Resp	Lower	Upper
202	100		
101	14.1	10.3	15.5
100	9.9	8.4	12.6



#84
 Chrysene
 Concen: 1.011 ng/ul
 RT: 21.07 min Scan# 3075
 Delta R.T. -0.01 min
 Lab File: BN009574.D
 Acq: 04 Feb 2020 21:03

Tgt Ion	Resp	Lower	Upper
228	100		
226	26.4	23.5	35.3
229	20.7	15.8	23.8





#87
 Benzo(b)fluoranthene
 Concen: 1.190 ng/ul
 RT: 22.53 min Scan# 3323
 Delta R.T. 0.00 min
 Lab File: BN009574.D
 Acq: 04 Feb 2020 21:03

Instrument :
 BNA_N
ClientSampled :
 C5AM8

Tot Ion	Ratio	Lower	Upper
252	100		
253	24.7	17.0	25.6
125	14.0	8.2	12.2#

