

Data Path : Z:\svoasrv\HPCHEM1\BNA_N\Data\BN020724\
 Data File : BN029545.D
 Acq On : 07 Feb 2024 14:27
 Operator : MA/JU
 Sample : PB158769BL
 Misc :
 ALS Vial : 9 Sample Multiplier: 1

Instrument :
 BNA_N
 ClientSampleId :
 SBLK769

Quant Time: Feb 08 00:49:35 2024
 Quant Method : Z:\svoasrv\HPCHEM1\BNA_N\Methods\SFAM-EPA-BN020724.MA.M
 Quant Title : SVOA CALIBRATION
 QLast Update : Thu Feb 08 00:25:29 2024
 Response via : Initial Calibration

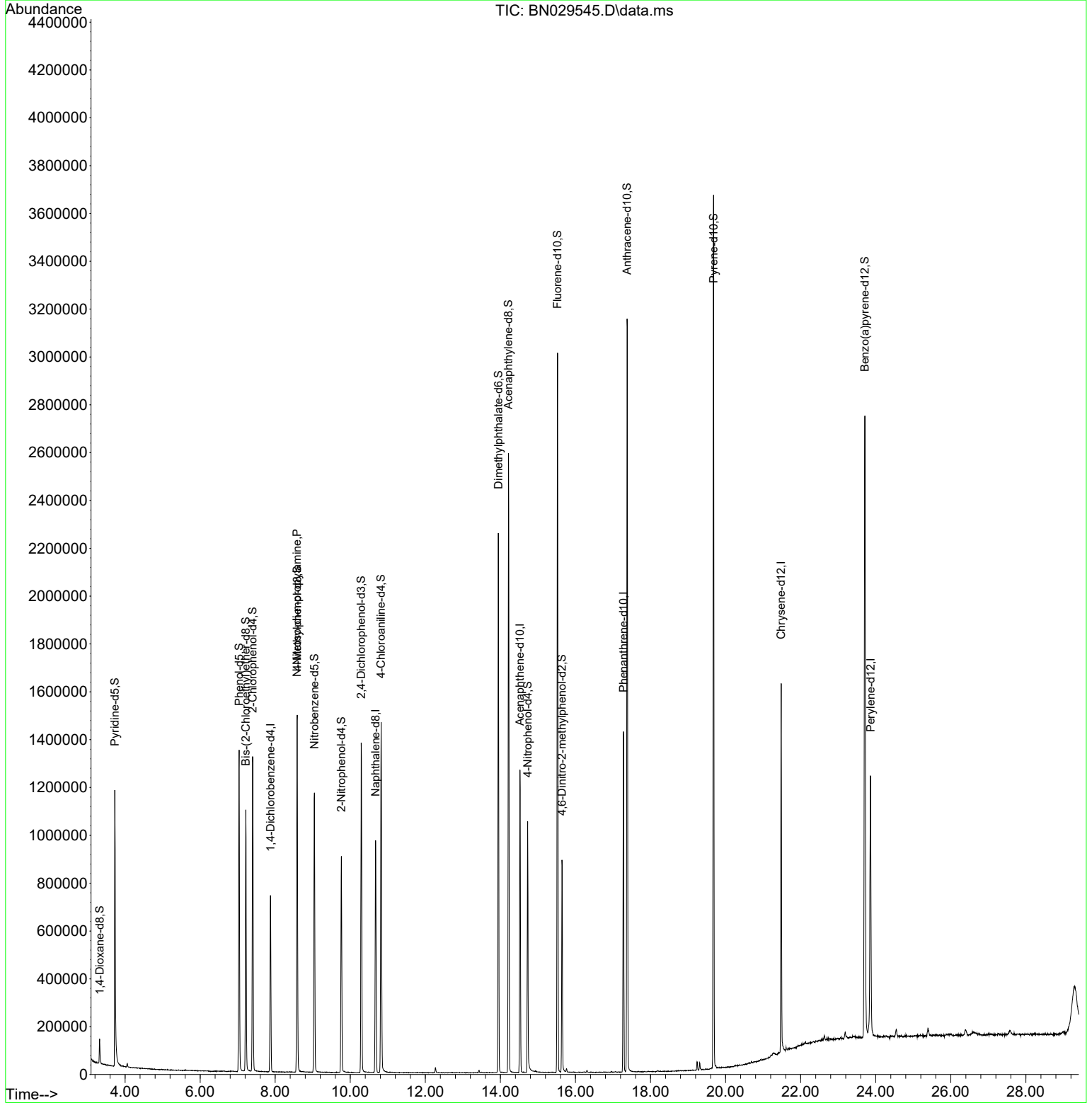
Compound	R.T.	QIon	Response	Conc	Units	Dev(Min)
Internal Standards						
1) 1,4-Dichlorobenzene-d4	7.875	152	185269	20.000	ng/ul	-0.01
20) Naphthalene-d8	10.675	136	763697	20.000	ng/ul	-0.01
38) Acenaphthene-d10	14.522	164	405116	20.000	ng/ul	0.00
64) Phenanthrene-d10	17.281	188	797607	20.000	ng/ul	0.00
79) Chrysene-d12	21.480	240	642519	20.000	ng/ul	0.00
88) Perylene-d12	23.863	264	746083	20.000	ng/ul	0.01
System Monitoring Compounds						
3) 1,4-Dioxane-d8	3.322	96	49094	8.716	ng/uL	0.00
4) Pyridine-d5	3.728	84	657695	43.783	ng/ul	-0.01
7) Phenol-d5	7.040	99	745991	43.048	ng/ul	-0.01
9) Bis-(2-Chloroethyl)eth...	7.216	67	489209	42.300	ng/ul	-0.01
11) 2-Chlorophenol-d4	7.399	132	569992	45.390	ng/ul	-0.02
15) 4-Methylphenol-d8	8.587	113	549575	42.524	ng/ul	-0.01
21) Nitrobenzene-d5	9.046	128	264938	44.698	ng/ul	0.00
24) 2-Nitrophenol-d4	9.763	143	254153	49.233	ng/ul	-0.01
28) 2,4-Dichlorophenol-d3	10.293	165	444399	43.614	ng/ul	-0.01
31) 4-Chloroaniline-d4	10.822	131	732006	42.110	ng/ul	-0.01
46) Dimethylphthalate-d6	13.945	166	1347793	44.686	ng/ul	0.00
49) Acenaphthylene-d8	14.216	160	1575495	43.985	ng/ul	0.00
54) 4-Nitrophenol-d4	14.728	143	223297	39.007	ng/ul	0.00
60) Fluorene-d10	15.522	176	1100427	42.887	ng/ul	0.00
65) 4,6-Dinitro-2-methylph...	15.639	200	148213	38.136	ng/ul	0.00
73) Anthracene-d10	17.375	188	1672293	44.737	ng/ul	0.00
81) Pyrene-d10	19.680	212	1831754	47.506	ng/ul	0.00
92) Benzo(a)pyrene-d12	23.710	264	1716407	45.975	ng/ul	0.00
Target Compounds						
17) N-Nitroso-di-n-propyla...	8.581	70	15719	1.480	ng/ul#	1

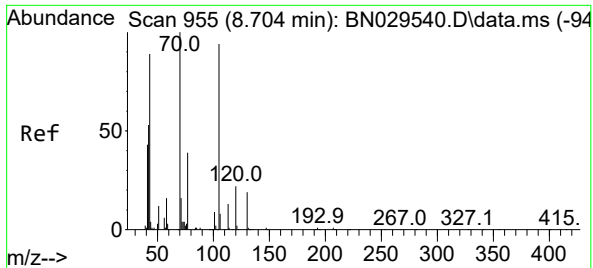
(#) = qualifier out of range (m) = manual integration (+) = signals summed

Data Path : Z:\svoasrv\HPCHEM1\BNA_N\Data\BN020724\
 Data File : BN029545.D
 Acq On : 07 Feb 2024 14:27
 Operator : MA/JU
 Sample : PB158769BL
 Misc :
 ALS Vial : 9 Sample Multiplier: 1

Instrument :
 BNA_N
 ClientSampleId :
 SBLK769

Quant Time: Feb 08 00:49:35 2024
 Quant Method : Z:\svoasrv\HPCHEM1\BNA_N\Methods\SFAM-EPA-BN020724.MA.M
 Quant Title : SVOA CALIBRATION
 QLast Update : Thu Feb 08 00:25:29 2024
 Response via : Initial Calibration





#17
 N-Nitroso-di-n-propylamine
 Concen: 1.480 ng/ul
 RT: 8.581 min Scan# 91
 Delta R.T. -0.123 min
 Lab File: BN029545.D
 Acq: 07 Feb 2024 14:27

Instrument :
 BNA_N
 ClientSampleId :
 SBLK769

Tgt Ion: 70 Resp: 15719

Ion	Ratio	Lower	Upper
70	100		
42	328.5	43.0	64.4#
101	0.0	7.4	11.2#
130	0.0	15.1	22.7#

